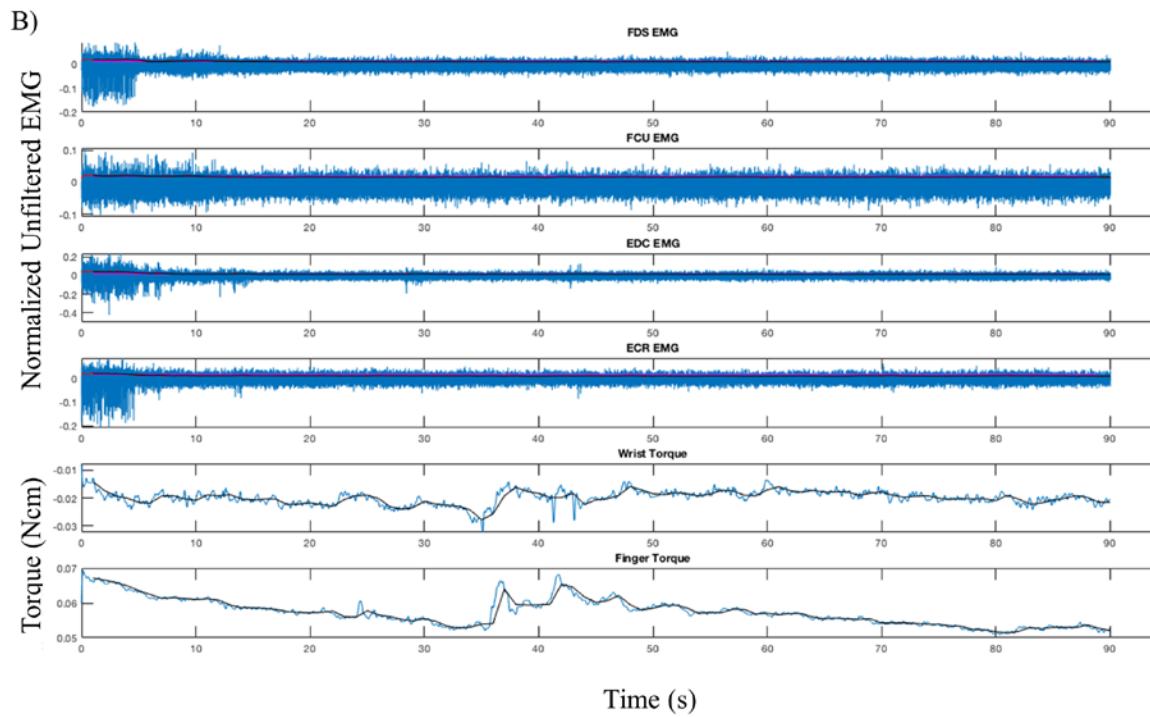
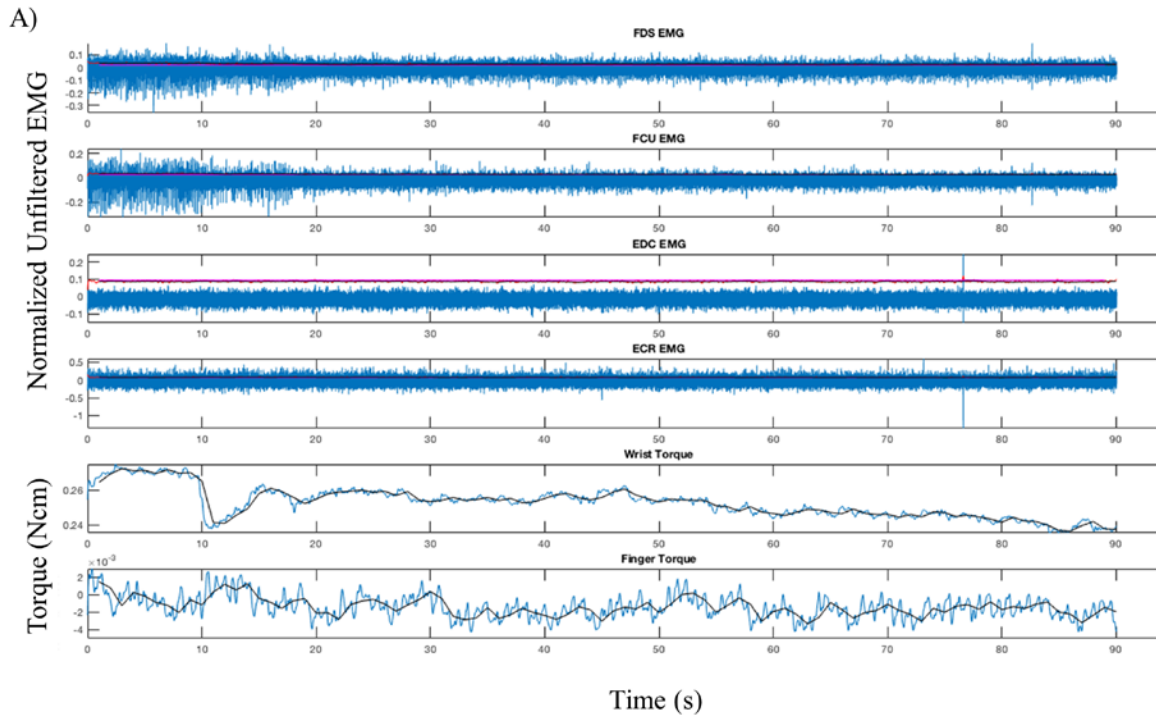


Sup. Fig 1

Examples of motor neuron hyperactivity reduction during static stretching prior to data collection



Supplemental Figure 1: Representative plots, from two separate individuals (A & B), of EMG and torque traces over 90 seconds within an initial stretch accommodating the participant to the device and reducing motor neuron hyperactivity. Displayed are raw unfiltered data (blue lines), rectified and filtered EMG (red lines), processed 1 second binned data (black lines), with EMG threshold cutoff for active muscle (magenta lines). Though the participant was “relaxed” at the beginning of each stretch there is significant EMG activity initially with subsequent EMG and torque reduction within each. Example A demonstrates FDS and FCU EMG initially firing at a low levels with activity decreasing and a corresponding decrease in wrist torque that continues throughout the trial. Example B demonstrates EMG activity reducing across all muscles with a corresponding decrease in finger and wrist torque that continues throughout the trial