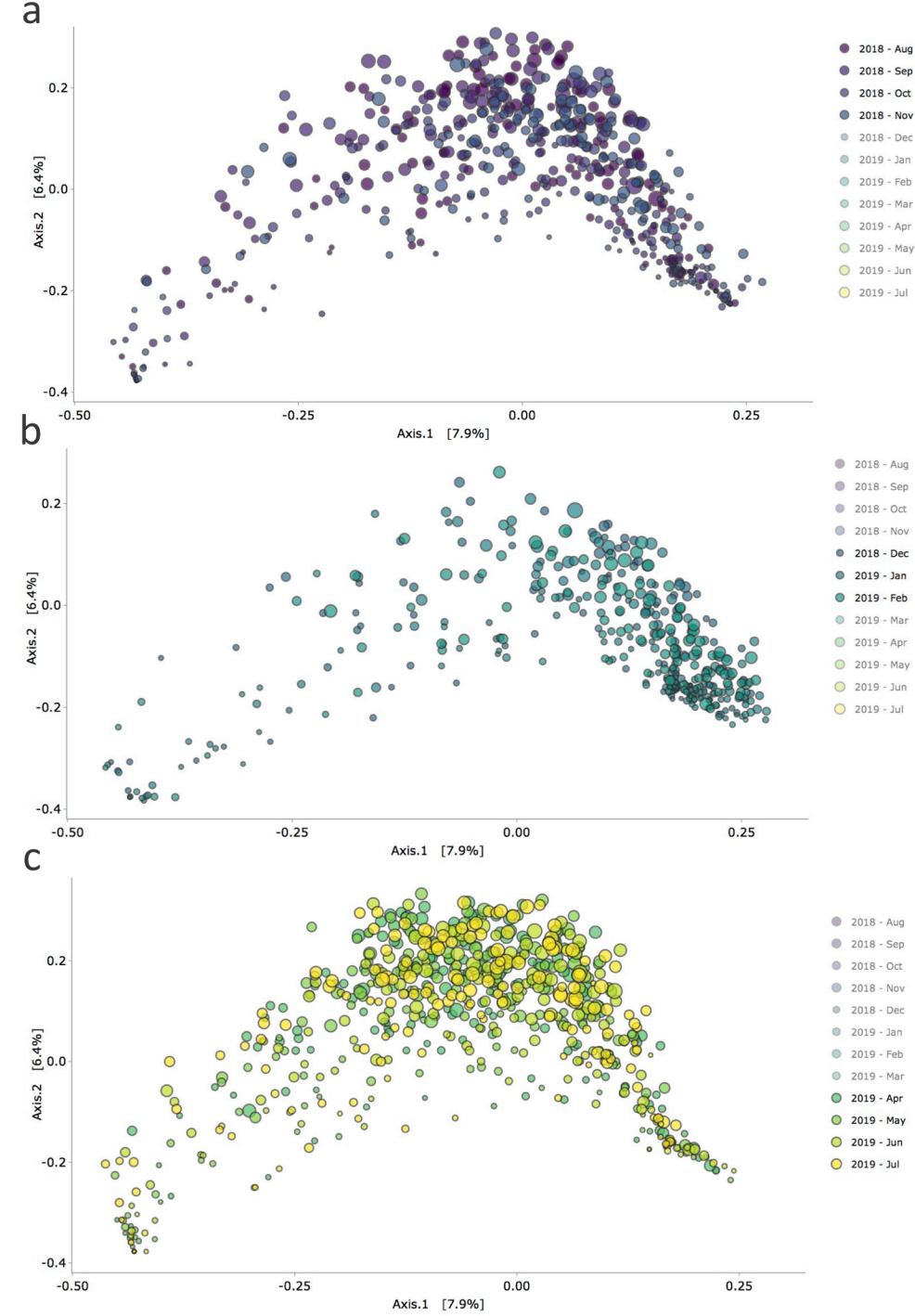


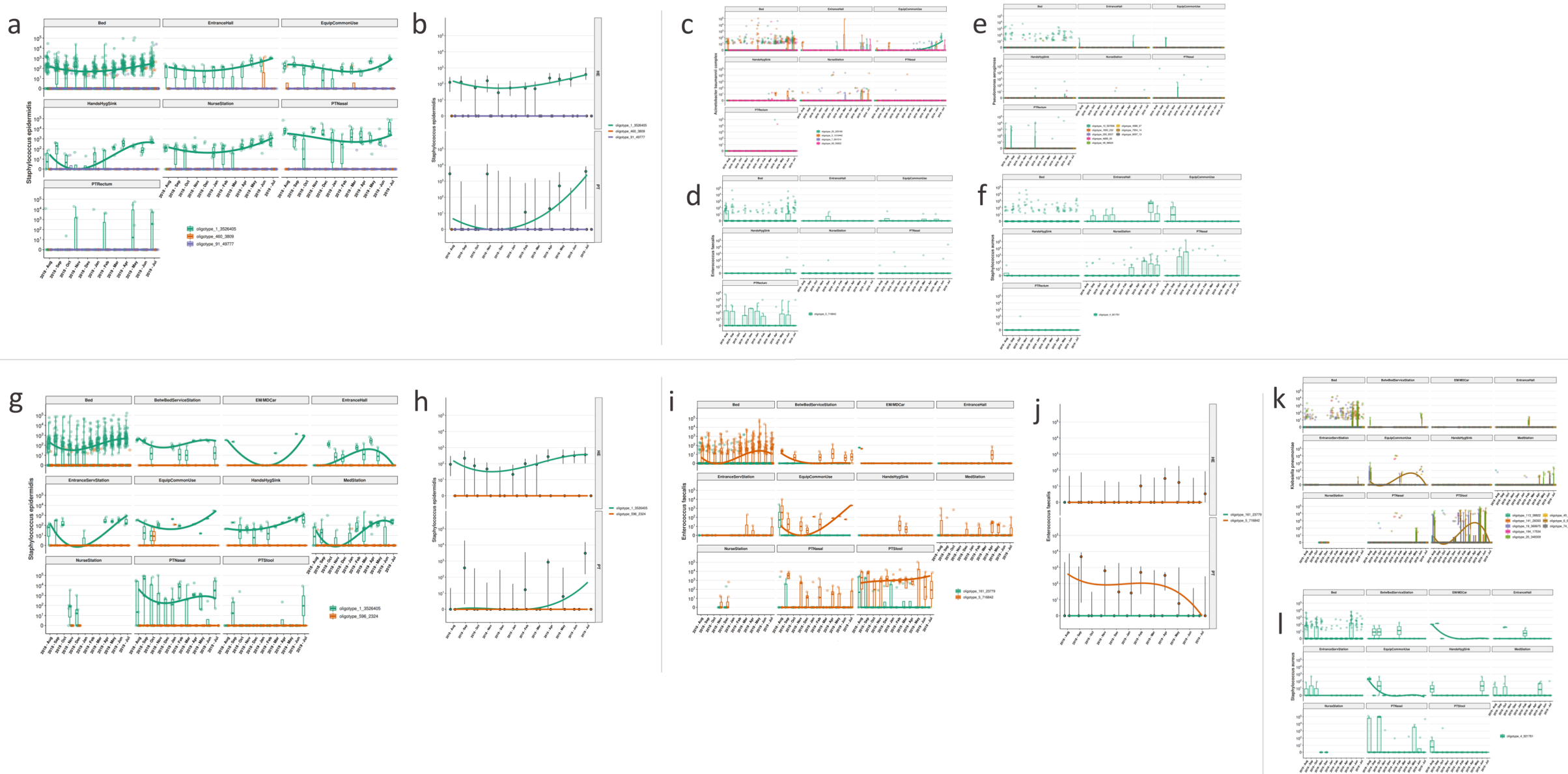
Supplementary Figure 1. Shannon diversity profiles considering all samples from ICU (**a**) and NICU (**b**) in each month of analysis and locations - Bed, Entrance, Equipment, Patient (PT) and Stations and for specific sites in each intensive care unit (**c**) ICU and (**d**) NICU.

Supplementary Figure 2. Weighted UniFrac Beta-diversity profiles for all samples collected in both units, ICU and NICU separated in three different timelines, **(a)** from Aug-2018 to Nov-2018, **(b)** Dez-2018 to Feb-2019 and **(c)** Apr-2019 to Jul-2019.

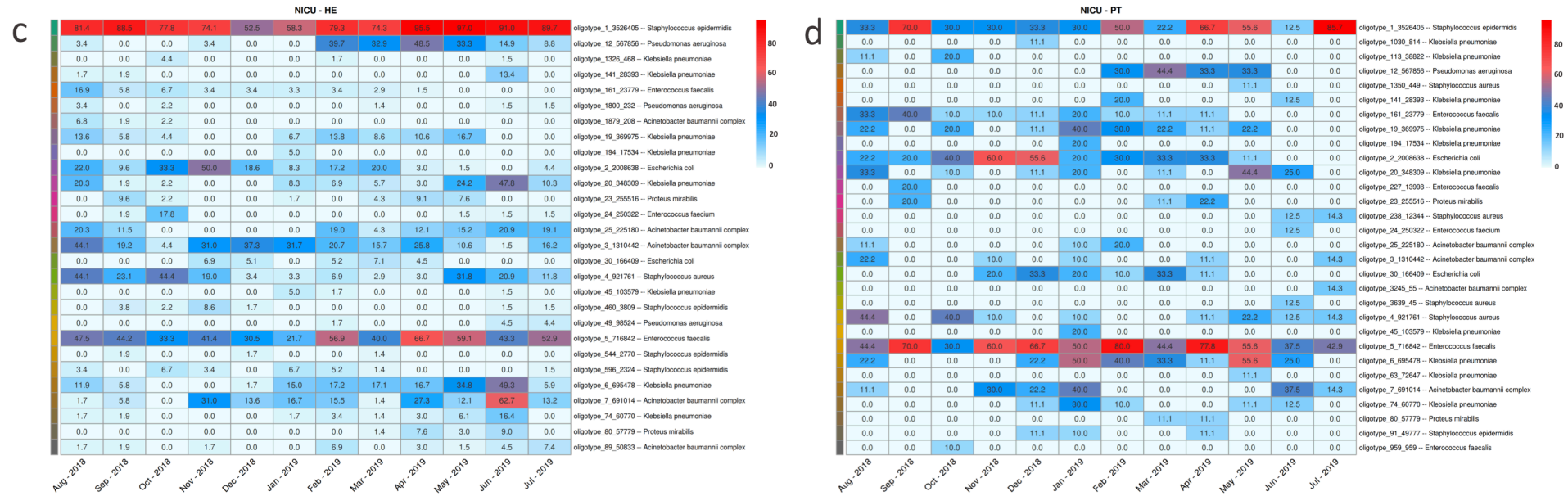
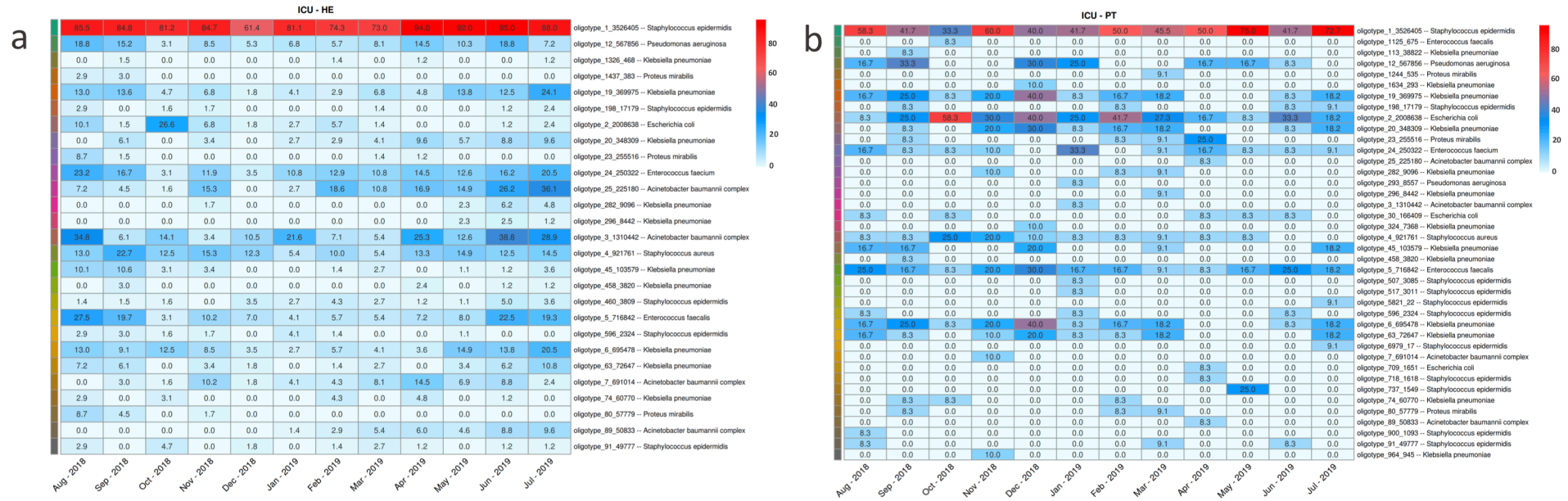




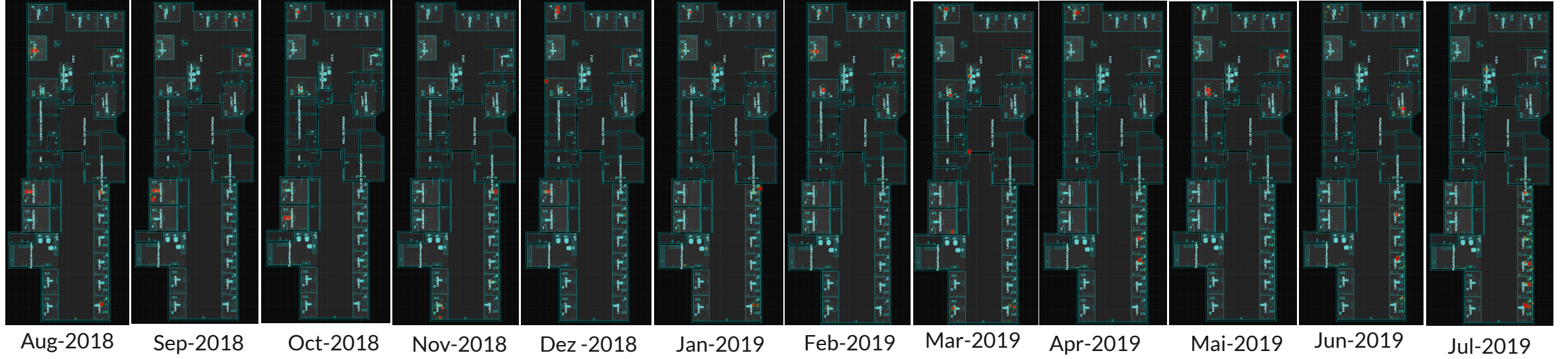
Supplementary Figure 3. Most abundant bacteria detected and classified in four taxonomical ranks: Phylum, Family, Genus and Species. ICU abundant bacteria by month (**a-d**) and by sample location (**e-h**). NICU abundant bacteria by month (**i-l**) and by sample location (**m-p**).



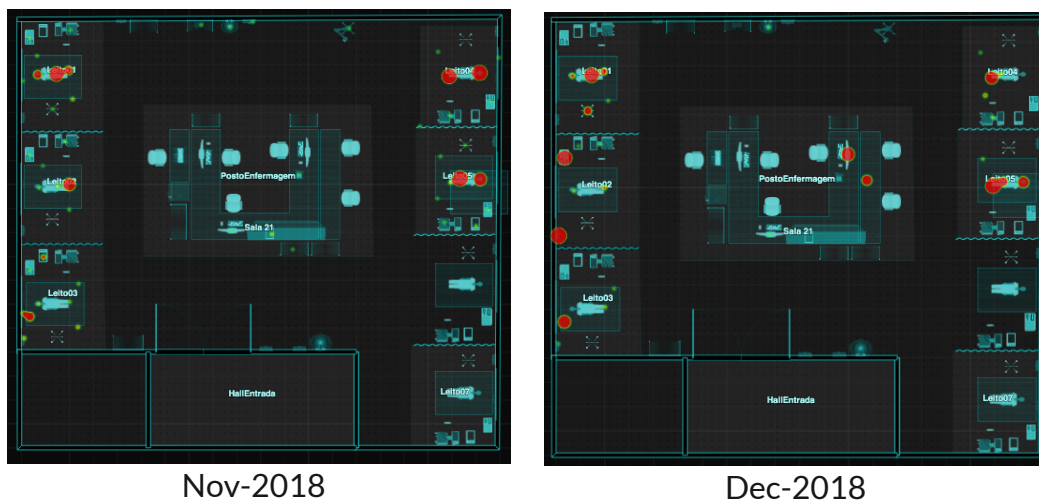
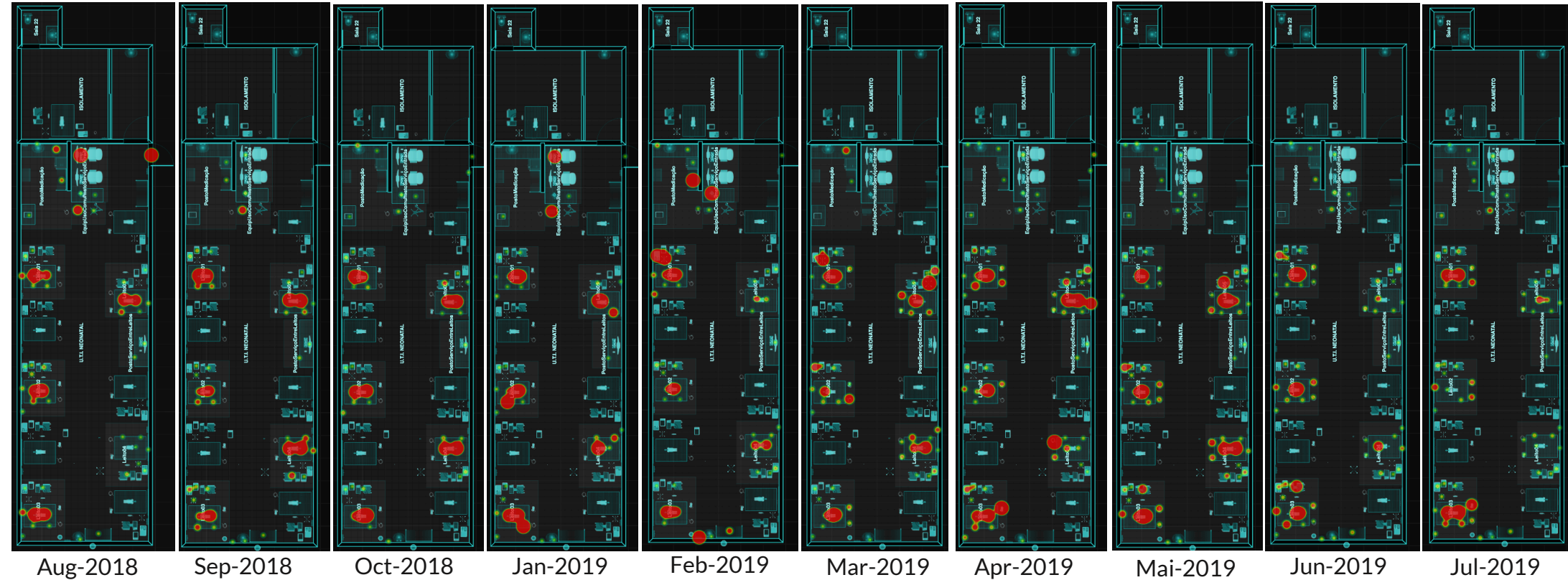
Supplementary Figure 4. Longitudinal profile of specific bacteria and its oligotypes most abundantly found in ICU (a-f) and NICU (g-l) locations. (a) *S. epidermidis* oligotype abundances in different locations and (b) in patients (PT) and environmental samples (HE) along the year in the ICU. (c) *A. baumannii* complex (d) *E. faecalis* (e) *P. aeruginosa* and (f) *S. aureus* oligotypes longitudinal abundance profiles in ICU. (g) *S. epidermidis* oligotypes distributions along the year in NICU locations and their longitudinal profile in (h) patients and environmental samples. (i) *E. faecalis* oligotypes abundances in collected locations and their distributions in (j) patients and environmental samples. (k) *K. pneumoniae* and (l) *S. aureus* oligotypes abundance profiles in NICU locations over the year analyzed.



Supplementary Figure 5. Proportion of positive samples for the most abundant oligotypes in (a) ICU environment, (b) ICU patients, (c) NICU environment and (d) NICU patients. Oligotypes are identified by a unique code, along with its count number (total reads detected along the analysis) and the bacterial taxonomy attributed by the Neotools pipeline. Color scales represents the proportion of positivity in the group of samples.



Supplementary Figure 6. Risk map ICU. The blueprint of hospital ICU was used to plot each month of analysis separately. Red spots represents a heatmap where larger spots correlate to areas with higher bacterial density. Only bacterial sequences from the HAIRB group were plotted in this map.



Supplementary Figure 7. Risk map NICU. The blueprint of hospital NICU was used to plot each month of analysis separately. Red spots represents a heatmap where larger spots correlate to areas with higher bacterial density. Only bacterial sequences from the HAIRB group were plotted in this map. November and December are separated since interventions were performed and the NICU changed locations for this two months.