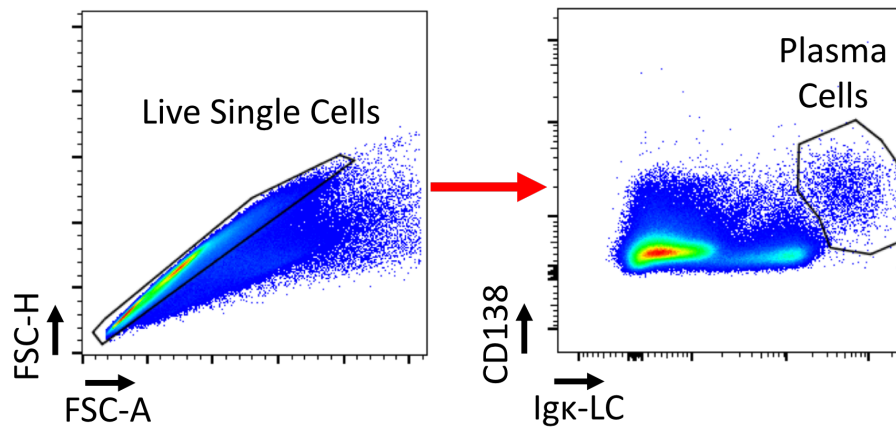
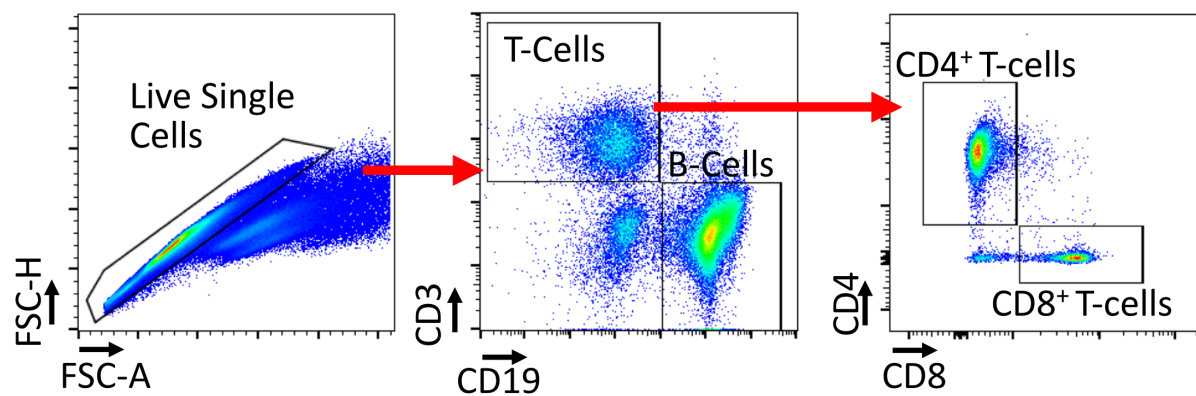


Supplemental Figure 1: Gating strategy for dendritic cells and monocytes



Supplemental Figure 2: Gating strategy for plasma cells



Supplemental Figure 2: Gating strategy for B-cells and T-cells.

	SLE Median [IQR]	Control Median [IQR]
Demographics		
Age, years	29.5 [20, 36.75]	36.75 [29, 39]
Race, # Caucasian	5 (83)	4 (100)
Ethnicity, # Hispanic	1 (16.7)	1 (25)
Sex, # female	4 (67)	4 (100)
Blood Pressure	115.5 (105.5-	127.75 (126-
Blood Pressure	70.5 (63.5-81.25)	73 (71-81.25)
BMI	22.1 (21.8-36.2)	26 (22.8-26.9)
Creatinine	0.71 (0.63-0.92)	N/A
SLE Manifestation		
Mucocutaneous, #	4 (66.7)	N/A
Musculoskeletal, #	5 (83.3)	N/A
Serositis, # ever	1 (16.7)	N/A
Hematologic, # ever	1 (16.7)	N/A
Renal, # ever	2 (33.3)	N/A
Anti-dsDNA positivity,	4 (66.7)	N/A
Low complement, #	2 (33)	N/A
SLEDAI, score	2 [1, 4]	N/A
SLICC, score	0 [0, 1]	N/A
Hypertension	0 (0)	
Current medication		
Hydroxychloroquine,	6 (100)	N/A
Mycophenolate, #	2 (33.3)	N/A
Corticosteroids, #	2 (33.3)	N/A
ACE Inhibitors	1 (16.7)	

Supplemental Table 1: Clinical features of SLE patients and controls studies with mass spectrometry.

	SLE Median [IQR] or # (%)	Control Median [IQR] # (%)
Demographics		
Age, years	46 [44, 50]	50 [36, 50]
Race, # Caucasian	4 (66.7)	4 (100)
Ethnicity, # Hispanic	0 (0)	0 (0)
Sex, # female	6 (100)	3 (75)
Blood Pressure	120.5 (111.25-	123.75 (100-125)
Blood Pressure	73 (66.75-74.75)	73 (57-75)
BMI	22.1 (21.8-36.2)	27.5(25.9-30.7)
Creatinine	0.71 (0.63-0.92)	N/A
SLE Manifestation		
Mucocutaneous, #	4 (66.7)	N/A
Musculoskeletal, #	5 (83.3)	N/A
Serositis, # ever	1 (16.7)	N/A
Hematologic, # ever	1 (16.7)	N/A
Renal, # ever	2 (33.3)	N/A
Anti-dsDNA positivity,	4 (66.7)	N/A
Low complement, #	2 (33)	N/A
SLEDAI, score	2 [1, 4]	N/A
SLICC, score	0 [0, 1]	N/A
Hypertension	0 (0)	
Current medication		
Hydroxychloroquine,	6 (100)	N/A
Mycophenolate, #	2 (33.3)	N/A
Corticosteroids, #	2 (33.3)	N/A
ACE Inhibitors	1 (16.7)	

Supplementary Table 2: Clinical features of SLE patients and controls studied with HPLC.