

Supplementary Methods

PD-1/PD-L1 interaction using Proximity Ligation Assay (PLA) in formalin fixed paraffin embedded renal cell carcinoma tissue

Tissue sections of clear cell renal cell carcinoma samples were provided by Cruces University Hospital, Bizkaia. Three consecutive cross sections of PD-L1 positive and PD-L1 negative tissue were mounted on separate slides to allow differential labelling. PLA reagents were obtained from Duolink® In Situ Orange Starter Kit, Sigma Aldrich.

Tissue sections were added to pre-boiled Tris-EDTA buffer and subsequently heated for 10 minutes in a microwave. In order to prevent non-specific binding, 300µl of 1% Bovine Serum Albumin (BSA) in phosphate buffered saline (PBS) was added to each slide and incubated for 60 minutes in a humidified tray. Primary antibody staining was carried out using mouse monoclonal anti-PD-1 and rabbit monoclonal anti-PD-L1 as described previously. Non-specific rabbit IgG and mouse IgG antibodies were used to create 2 control groups. Control-1, anti-PD-1 and Rabbit IgG (1:20) and Control-2, mouse IgG (1:40) and anti-PD-L1. 150µl of corresponding antibody solutions were added to each slide and incubated overnight at 4°C. The PLA protocol was carried out using the supplier instructions.

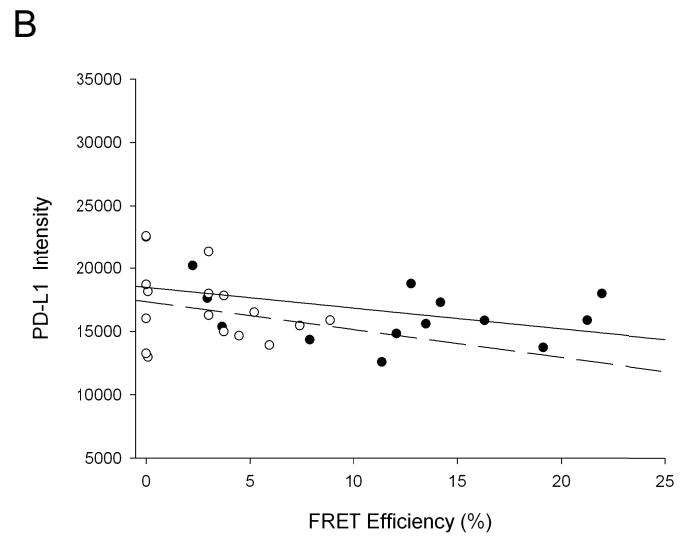
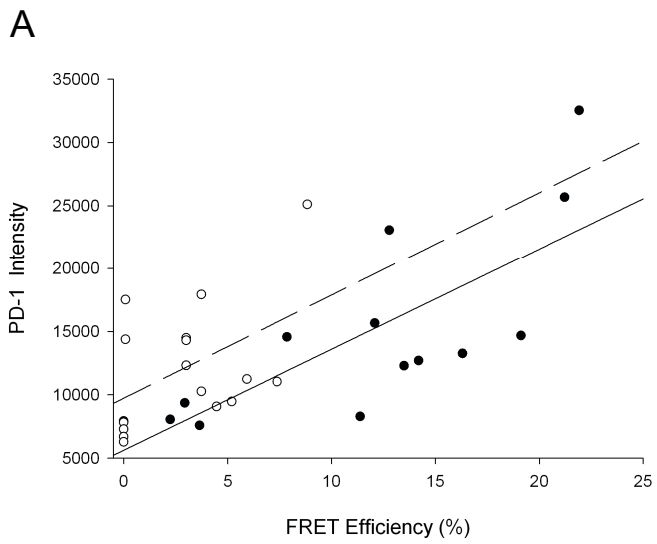
Supplementary Figure 1: Graphs represent the relationship between PD-1 (A) and PD-L1 (B) intensities and FRET efficiency values in the absence (●) and presence (○) of blocking antibody. r^2 values for PD-1 in the absence and presence of blocking mAb are 0.58 and 0.22 respectively, whereas r^2 values for PD-L1 in the absence and presence of blocking mAb are 0.19 and 0.054 respectively.

Supplementary Figure 2: Graphs to show the relationship between CTLA-4 (A) and CD80 (B) intensity and FRET Efficiency values in the absence (●) and presence (○) of blocking mAb. r^2 values for CTLA-4 in the absence and presence of blocking mAb are 0.35 and 0.17 respectively, whereas r^2 values for CD80 in the absence and presence of blocking mAb are 0.11 and 0.33 respectively.

Supplementary Figure 3: iFRET identifies localised PD-1 and PD-L1 interaction in PD-L1 negative fixed ccRCC samples not established by proximity ligation assay. A, visualisation of PD-1 and PD-L1 co-localisation in PD-L1 positive (i) and PD-L1 negative (ii) fixed ccRCC samples using PLA. Samples were labelled with primary antibodies against PD-1 and PD-L1 and secondary PLA probes. Negative controls were included whereby PD-L1 and PD-1 primary antibodies were replaced with non-specific rabbit IgG and mouse IgG antibodies respectively. Rolling circle amplification (RCA) products and nuclei were labelled with Cy3 and DAPI respectively. 30 images were acquired for the PD-L1 positive section stained with both PD-1 and PD-L1 antibodies and 15 for each control. Five images were acquired for each PD-L1 negative condition. B, PD-1 and PD-L1 interaction status determined by iFRET in fixed ccRCC patient samples. Box and Whisker plots represent the FRET efficiency values for PD-L1 positive and PD-L1 negative tissue samples. The mean values \pm SEM are indicated, and the median is represented by the midline.

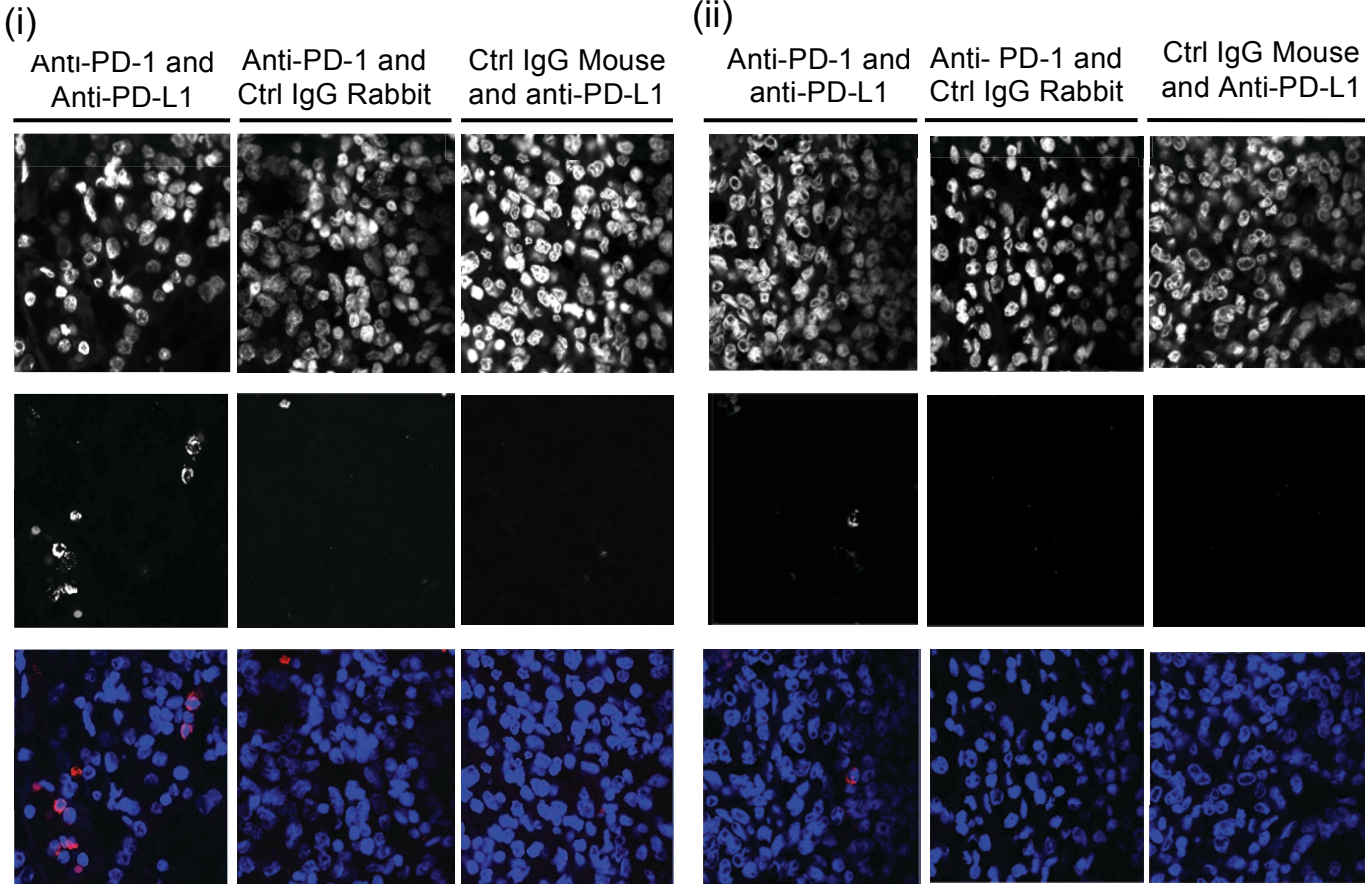
Supplementary Table 1: An overview of the clinical parameters for the 176 patients in the malignant melanoma cohort. There were more males than females in the cohort with the majority of diagnoses occurring in patients between 60 and 69. The tumours fell into a range of stages with the most common stages being IB, IV and IIA. Tumour infiltrating lymphocytes were absent in 22.9% of patients and present in 77.1% of patients. 9.2% of patients experienced local recurrence.

Supplementary Figure 1: Sanchez-Magraner and Miles et al., 2019.

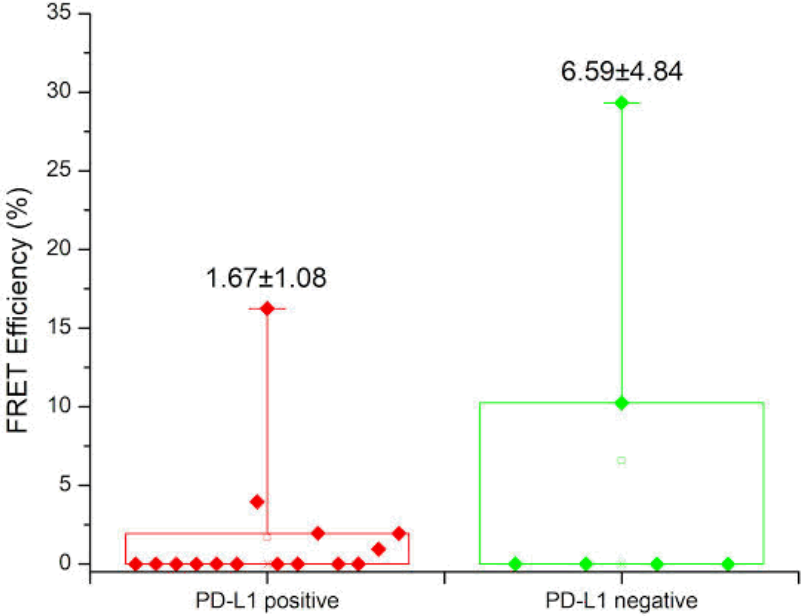


Supplementary Figure 3: Sanchez-Magrener and Miles et al., 2019.

A



B



Supplementary Table 1: Sanchez-Magraner and Miles et al., 2019.

Clinical Parameter		Frequency n (%)
Gender (n= 173)	Male	102 (59.9)
	Female	71 (41.1)
Age at primary diagnosis (n= 172)	<50	30 (17.4)
	50-59	29 (16.9)
	60-69	37 (21.5)
	70-79	36 (21.0)
	≥ 80	40 (23.2)
Stage (n=172)	IA	1 (0.6)
	IB	42 (24.4)
	II	1 (0.6)
	IIA	30 (17.4)
	IIB	27(15.7)
	IIC	17 (9.8)
	III	2 (1.2)
	IIIA	1 (0.6)
	IIIB	2 (1.2)
	IIIC	9 (5.2)
	IIID	2 (1.2)
Site of tumour (n= 172)	Head and Neck	29 (16.9)
	Trunk	19 (11.0)
	Upper Limb(s)	38 (22.1)
	Lower Limb(s)	37 (21.5)
	Pelvic Region	5 (2.9)
	Back	44 (25.6)
Breslow Thickness (mm) (n= 172)	<1mm	0.0 (0)
	1-1.9mm	48 (27.9)
	2-3.9mm	69 (40.1)
	4-5.9mm	26 (15.1)
	≥6mm	29 (16.9)
Ulceration (n= 171)	Absent	110 (64.3)
	Present	61 (35.7)
Microsatellites (n=170)	Absent	165 (97.1)
	Present	5 (2.9)
Tumour Infiltrating Lymphocytes (n= 170)	Absent	39 (22.9)
	Focal	101 (59.4)
	Extensive	30 (17.7)
Local Recurrence (n=173)	Absent	157 (90.8)
	Present	16 (9.2)