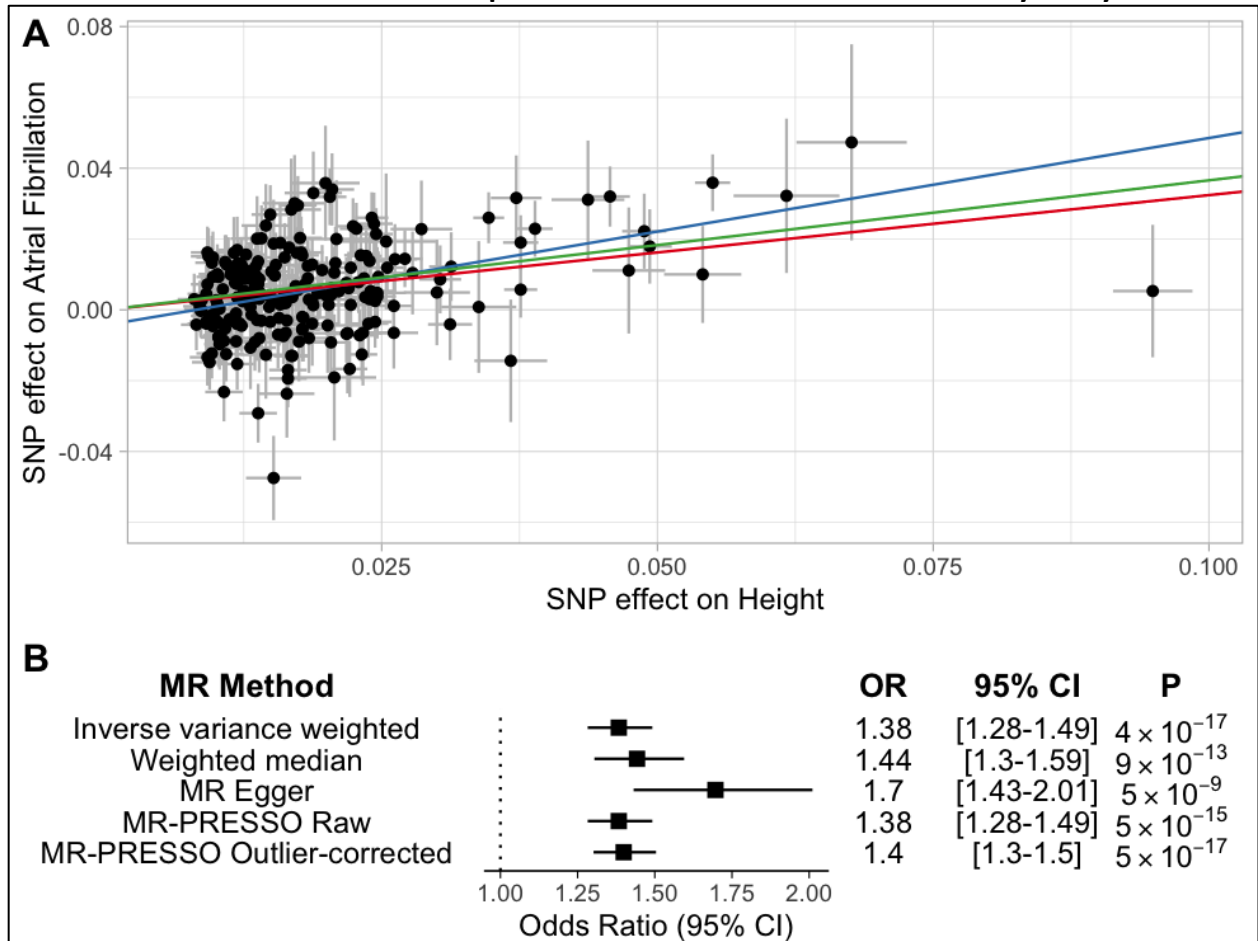


Genetics of Height and Risk of Atrial Fibrillation: A Mendelian Randomization Study

SUPPLEMENTAL FIGURES.....	2
SUPPLEMENTAL FIGURE 1: TWO-SAMPLE MENDELIAN RANDOMIZATION SENSITIVITY ANALYSIS.....	3
SUPPLEMENTAL FIGURE 2: TWO-SAMPLE MENDELIAN RANDOMIZATION DIRECTIONALITY SENSITIVITY ANALYSIS.....	4
SUPPLEMENTAL FIGURE 3: INDIVIDUAL MENDELIAN RANDOMIZATION SENSITIVITY ANALYSIS.....	5
SUPPLEMENTAL METHODS.....	6
PENN MEDICINE BIOBANK GENOTYPING, QC AND IMPUTATION	7
PHENOTYPE ASCERTAINMENT	8

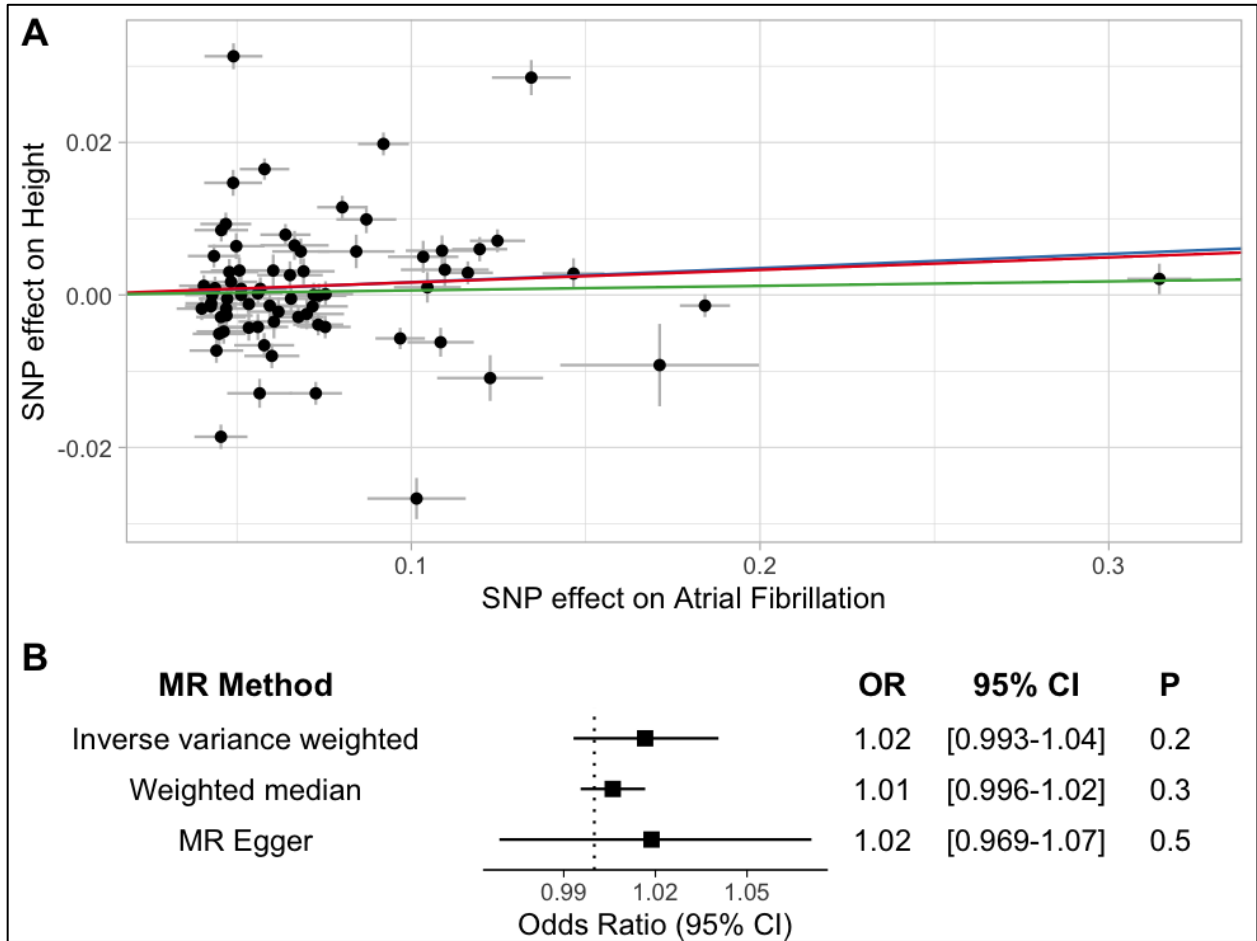
SUPPLEMENTAL FIGURES

SUPPLEMENTAL FIGURE 1: Two-Sample Mendelian Randomization Sensitivity Analysis



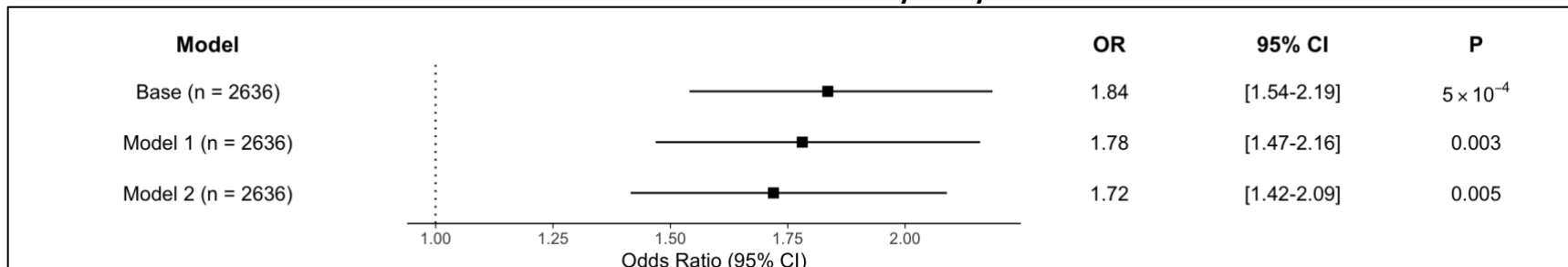
Two-sample Mendelian randomization was performed using a genetic instrument containing 224 independent SNPs associated with height, excluding SNPs nominally associated ($p < 0.05$) with traditional atrial fibrillation risk factors: coronary artery disease, HDL, LDL, total cholesterol, triglycerides, fasting glucose, fasting insulin, diabetes, BMI, waist-to-hip ratio, and systolic blood pressure. A) Each point represents the SNP effects on height and atrial fibrillation. Colored lines represent inverse variance weighted (red), weighted median (green), and MR-Egger (blue) estimates of the association between a 1 standard deviation increase in height and risk of atrial fibrillation. B) Odds Ratios (OR), 95% Confidence Intervals (CI) and P-values for Mendelian randomization estimates.

SUPPLEMENTAL FIGURE 2: Two-Sample Mendelian Randomization Directionality Sensitivity Analysis



Two-sample Mendelian randomization was performed using a genetic instrument containing 73 independent SNPs associated with atrial fibrillation. A) Each point represents the SNP effects on atrial fibrillation and height. Colored lines represent inverse variance weighted (red), weighted median (green), and MR-Egger (blue) estimates of the association between a 1 standard deviation increase in height and risk of atrial fibrillation. B) Odds Ratios (OR), 95% Confidence Intervals (CI) and P-values for Mendelian randomization estimates.

SUPPLEMENTAL FIGURE 3: Individual Mendelian Randomization Sensitivity Analysis



Individual-level instrumental variable analysis was performed in the subset of Penn Medicine Biobank participants with clinically obtained echocardiogram data, using a polygenic risk score for height as an instrumental variable for measured height. The Base model was adjusted for age, sex, and 5 genetic principal components. Model 1 additionally adjusted for weight, hypertension, coronary artery disease, heart failure, hyperlipidemia, diabetes, chronic kidney disease, sleep apnea, stroke, hyperthyroidism, smoking, cardiac surgery, and valvular heart disease. Model 2 additionally adjusted for left atrial size as measured on transthoracic echocardiogram. Odds ratio are reported per 1 standard deviation increase in height.

SUPPLEMENTAL METHODS

Penn Medicine Biobank Genotyping, QC and Imputation

DNA extracted from blood was genotyped on the Illumina OmniExpress chip at the Regeneron Genetics Center. Genetic ancestry was calculated from common, high quality SNPs (MAF > 0.05, missingness < 0.1) by training a kernel density estimator on principal components (PCs) from HapMap3 samples, determining the likelihood of each individual being from that ancestral superclass, and assigning the ancestral superclass based on the likelihoods. Individuals assigned to two ancestral superclasses were preferentially assigned to the non-European superclass.[41] Individuals with European ancestry (EUR) were extracted for downstream QC and analysis (n=8,078). Samples were removed for discordant reported and genetic sex, call rate <95%, heterozygosity >3 standard deviations from the mean, or high levels of cryptic relatedness. Variants were removed if the minor allele frequency was <1%, the call rate was <98%, or there was significant deviation ($p > 1 \times 10^{-6}$) from Hardy Weinberg equilibrium. Following QC, 7,420 individuals remained (557,410 variants). Quality control of the genotyping calls was conducted using PLINK software (PLINK 1.9).[42]

Genotypes were phased (Eagle v2.3) and imputed to the 1000 Genomes reference panel (1000G Phase3 v5) using the Michigan Imputation Server. In total, 27,139,012 polymorphic variants were imputed. We retained high quality, common SNPs with imputation marker INFO score ≥ 0.7 and allele frequencies ≥ 0.01 for risk score analysis (n=8,792,462).

Phenotype Ascertainment

For individual level analyses in Penn Medicine Biobank, phenotype prevalence was determined by querying the electronic health record. International Classification of Diseases (ICD) 9/10 and Current Procedural Terminology (CPT) codes, in addition to laboratory measurements and vital signs, were used to identify height, weight, BMI, smoking status, diagnoses of heart failure, hypertension, diabetes mellitus, chronic kidney disease, sleep apnea, stroke, thyroid disease, valvular heart disease, and cardiac surgery. Of the 7,420 individuals with QC'd genotypes, clinical phenotypes could be ascertained for 7,023 individuals. Data was extracted as of January 2017. Unless otherwise specified, individuals were defined as cases when having 2 or more relevant ICD9/10 codes, and for procedural diagnoses, 1 or more CPT codes. Individuals not meeting case criteria were considered controls for each diagnosis. Atrial fibrillation was defined using ICD9/10 codes: 427.31, I48.0, I48.1, I48.2, I48.91. Hypertension was defined using ICD9/10 codes: 401, 402, 403, 404, 405, 437.2, 642.0, 642.1, 642.2, I10, I11, I12, I13, I14, I15, I16, I67.4, O10. Diabetes was defined as either 2 or more ICD9 (250*, 357*, 362, 366.41, 648) or ICD10 (E10*, E11*, E13*, O24*) AND a prescription for insulin, an oral diabetes medication, or statin; 2 or more ICD9 or ICD10 codes AND either a random glucose >200, fasting glucose >125, or hemoglobin A1c test ordered; A prescription for insulin, an oral diabetes medication, or statin, AND an abnormal glucose lab result. Chronic Kidney disease was defined using ICD9/10 codes: 585*, 403*, 250.4, N18*, I12*, E10.2, E11.2, and eGFR <= 60. Heart Failure was defined using ICD9/10 codes: 428*, I50*. Stroke was defined using ICD9/10 codes: 433*, 434*, 435*, V12.54, I63*, G45*, Z86.73. Thyroid disease was defined using ICD9/10 codes: 242*, 242.1*, 242.2*, 242.3*, 242.4*, 242.8*, 242.9*, E05.30, E05.31, E05.80,

E05.81, E05.00, E05.20, E05.10, E05.11, E05.21, E05.01, E05.91. Valvular heart disease was defined using ICD9/10 codes: 394, 394.1, 394.2, 394.9, 395, 395.1, 395.2, 395.9, 396, 396.1, 396.2, 396.3, 396.8, 396.9, 397, 397.1, 397.9, 424, 424.1, 424.2, 424.3, V42.2, V43.3, Z95.1, 746.4, 745.81, 746.09, Q23.0, Q23.1, Q23.3, Q23.8, Q23.9, Q22.2, Q24.4, IO5*, IO6*, IO7*, IO8*, IO9.1, I34*, I35*, I36*, I37*, I38*. Sleep apnea was defined using PheCodes (version 1.2 ICD10-CM) 327.3, 327.31, 327.32. Cardiac surgery was defined using ICD9/10 codes: 35*, 36*, 37* and CPT codes: 00560, 00561, 00562, 00563, 00566, 00567, 32160, 33015, 33020, 33025, 33030, 33031, 33031, 33050, 33120, 33130, 33141, 33246, 33250, 33251, 33253, 33257, 33257, 33258, 33259, 33261, 33300, 33305, 33310, 33315, 33321, 33322, 33330, 33332, 33335, 33361, 33362, 33363, 33364, 33365, 33366, 33367, 33368, 33369, 33400, 33401, 33403, 33404, 33405, 33406, 33406, 33410, 33411, 33412, 33413, 33415, 33416, 33417, 33420, 33422, 33425, 33426, 33427, 33430, 33430, 33460, 33463, 33464, 33465, 33468, 33470, 33471, 33472, 33474, 33475, 33476, 33478, 33496, 33500, 33501, 33502, 33503, 33504, 33505, 33506, 33507, 33510, 33511, 33512, 33513, 33514, 33516, 33517, 33518, 33519, 33521, 33522, 33523, 33530, 33533, 33534, 33535, 33536, 33542, 33545, 33545, 33572, 33600, 33602, 33606, 33608, 33610, 33611, 33612, 33615, 33617, 33619, 33641, 33645, 33647, 33660, 33665, 33670, 33681, 33684, 33688, 33690, 33692, 33694, 33697, 33702, 33710, 33720, 33722, 33730, 33732, 33735, 33736, 33737, 33750, 33755, 33762, 33764, 33766, 33767, 33770, 33771, 33774, 33775, 33776, 33777, 33778, 33779, 33780, 33781, 33786, 33788, 33800, 33813, 33814, 33820, 33822, 33824, 33840, 33845, 33851, 33852, 33853, 33860, 33861, 33863, 33864, 33870, 33875, 33877, 33891, 33910, 33915, 33916, 33917, 33918, 33919, 33920, 33922, 33924, 33935, 33945, 33967, 33968, 33970, 33971, 33973, 33974, 33975, 33976, 33977, 33978, 33999, 1021150, 4110F.