

Supplemental file 1. Additional References (Relevant to differentiation / barrier related proteins presented in the Table 2).

Antimicrobial peptides.

- Arijs I, De Hertogh G, Lemaire K, et al. Mucosal gene expression of antimicrobial peptides in inflammatory bowel disease before and after first infliximab treatment. *PLoS one*. 2009;4:e7984.
- Okumura R, Kurakawa T, Nakano T, et al. Lypd8 promotes the segregation of flagellated microbiota and colonic epithelia. *Nature*. 2016;532:117.
- Okumura R, Takeda K. Maintenance of intestinal homeostasis by mucosal barriers. *Inflammation and regeneration*. 2018;38:5.
- Yang Y, Jobin C. Novel insights into microbiome in colitis and colorectal cancer. *Current opinion in gastroenterology*. 2017 Nov;33:422-7.
- Cellier MF, Courville P, Champion C. Nramp1 phagocyte intracellular metal withdrawal defense. *Microbes and infection*. 2007;9:1662-70.
- Orsi N. The antimicrobial activity of lactoferrin: current status and perspectives. *Biometals*. 2004;17:189-96.
- Man SM, Karki R, Kanneganti TD. DNA-sensing inflammasomes: regulation of bacterial host defense and the gut microbiota. *Pathogens and disease*. 2016;74(4).
- Jasir A, Kasprzykowski F, Kasprzykowska R, et al. New antimicrobial cystatin C-based peptide active against gram-positive bacterial pathogens, including methicillin-resistant *Staphylococcus aureus* and multiresistant coagulase-negative staphylococci. *Apmis*. 2003;111:1004-10.
- Pulkkinen V, Bruce S, Rintahaka J, et al. ELMOD2, a candidate gene for idiopathic pulmonary fibrosis, regulates antiviral responses. *The FASEB Journal*. 2010;24:1167-77.

Oxidative stress / Peroxiredoxins

- Guo F, He H, Fu ZC, et al. Adipocyte-derived PAMM suppresses macrophage inflammation by inhibiting MAPK signalling. *Biochem J*. 2015;472:309–318.
- Wang X, Phelan SA, Forsman-Semb K, et al. Mice with targeted mutation of peroxiredoxin 6 develop normally but are susceptible to oxidative stress. *Journal of Biological Chemistry*. 2003;278:25179-90.
- Geiszt M, Witta J, Baffi J, et al. Dual oxidases represent novel hydrogen peroxide sources supporting mucosal surface host defense. *The FASEB journal*. 2003;17:1502-4.
- Guan G, Lan S. Implications of Antioxidant Systems in Inflammatory Bowel Disease. *Biomed Res Int*. 2018;1290179. doi:10.1155/2018/1290179

CD44

- Naor D, Nedvetzki S, Golan I, et al. CD44 in cancer. *Crit Rev Clin Lab Sci*. 2002;39:527–79.

Apolipoprotein A-I

- Meriwether D, Sulaiman D, Volpe C, et al. Apolipoprotein AI mimetics mitigate intestinal inflammation in COX2-dependent inflammatory bowel disease model. *J Clin Invest*. 2019;130:3670-3685.

SGLT-1 / SLC15A1

- Yu, Linda CH, et al. SGLT-1-mediated glucose uptake protects intestinal epithelial cells against LPS-induced apoptosis and barrier defects: a novel cellular rescue mechanism?. *The FASEB Journal*. 2005;19:1822-1835.
- Zietek T, Daniel H. Intestinal nutrient sensing and blood glucose control. *Current Opinion in Clinical Nutrition & Metabolic Care*. 2015;18:381-8.
- Zucchelli M, Torkvist L, Bresso F, et al. PepT1 oligopeptide transporter (SLC15A1) gene polymorphism in inflammatory bowel disease. *Inflammatory bowel diseases*. 2009;15:1562-9.

Zo / Myosin.

- Cordenonsi M, D'Atri F, Hammar E, et al. Cingulin contains globular and coiled-coil domains and interacts with ZO-1, ZO-2, ZO-3, and myosin. *J Cell Biol*. 1999;147:1569–1582.
- Liu KC, Cheney RE. Myosins in cell junctions. *Bioarchitecture*. 2012;2:158–170.
- Vicente-Manzanares M, Ma X, Adelstein RS, et al. Non-muscle myosin II takes centre stage in cell adhesion and migration. *Nature reviews Molecular cell biology*. 2009;10:778.

CD99.

- Guangxi Zhou, Wenjing Yang, Lin Yu, et al. CD99 refers to the activity of inflammatory bowel disease, *Scandinavian Journal of Gastroenterology*, 2017;52:359-364

Meprin A.

- Coskun, Mehmet, et al. TNF- α -induced down-regulation of CDX2 suppresses MEP1A expression in colitis. *Biochimica et Biophysica Acta (BBA)-Molecular Basis of Disease* 2012;1822:843-851.
- Coskun M. Intestinal epithelium in inflammatory bowel disease. *Frontiers in medicine*. 2014;25;1:24.

Mucins / Trefoil factors.

- Hensel KO, Boland V, Postberg J, et al. Differential expression of mucosal trefoil factors and mucins in pediatric inflammatory bowel diseases. *Scientific reports*. 2014;4:7343.
- Loncar MB, Al-Azzeh ED, Sommer PS, et al. Tumour necrosis factor α and nuclear factor κ B inhibit transcription of human TFF3 encoding a gastrointestinal healing peptide. *Gut*. 2003;52:1297-303.
- Xue L, Aihara E, Wang TC, et al. Trefoil factor 2 requires Na/H exchanger 2 activity to enhance mouse gastric epithelial repair. *Journal of Biological Chemistry*. 2011;286:38375-82.

Additional;

Cell-Cell Junction Organization.

- Garcia MA, Nelson WJ, Chavez N. Cell-Cell Junctions Organize Structural and Signaling Networks. *Cold Spring Harb Perspect Biol.* 2018;10.
- Koster J, Geerts D, Favre B, et al. Analysis of the interactions between BP180, BP230, plectin and the integrin $\alpha 6\beta 4$ important for hemidesmosome assembly. *Journal of cell science.* 2003;116:387-99.

Inflammation.

- Mitsuyama K, Toyonaga A, Sasaki E, et al. IL-8 as an important chemoattractant for neutrophils in ulcerative colitis and Crohn's disease. *Clin Exp Immunol.* 1994;96:432–436.
- Zietek T, Rath E. Inflammation Meets Metabolic Disease: Gut Feeling Mediated by GLP-1. *Front Immunol.* 2016;7:154.
- Plevy S, Silverberg MS, Lockton S, et al. Combined serological, genetic, and inflammatory markers differentiate non-IBD, Crohn's disease, and ulcerative colitis patients. *Inflamm Bowel Dis.* 2013;19:1139–1148.
- Palone F, Vitali R, Cucchiara S, et al. Fecal HMGB1 reveals microscopic inflammation in adult and pediatric patients with inflammatory bowel disease in clinical and endoscopic remission. *Inflammatory bowel diseases.* 2016;22:2886-93.
- Zhu S, Ding S, Wang P, et al. Nlrp9b inflammasome restricts rotavirus infection in intestinal epithelial cells. *Nature.* 2017;546:667.
- Daig R, Andus T, Aschenbrenner E, et al. Increased interleukin 8 expression in the colon mucosa of patients with inflammatory bowel disease. *Gut.* 1996;38:216-22.

Supplement Table 1. Mineral analysis of Aquamin® Soluble.

Element	µg/g	Element	µg/g	Element	µg/g
Aluminum	21.6	Hafnium	0.038	Rubidium	0.031
Antimony	0.69	Holmium	0.010	Ruthenium	0.137
Arsenic	0.239	Indium	<0.001	Samarium	0.037
Barium	1.76	Iodine	1.81	Scandium	0.469
Beryllium	<0.5	Iridium	<0.001	Selenium	<0.5
Bismuth	<0.5	Iron	143	Silicon	16.8
Boron	13.7	Lanthanum	<0.5	Silver	<0.5
Cadmium	0.220	Lead	0.084	Sodium	2,206
Calcium	117,000	Lithium	<0.5	Strontium	882
Carbon	26,600	Lutetium	<0.001	Sulfur	1,241
Cerium	0.314	Magnesium	10,210	Tantalum	0.043
Cesium	0.001	Manganese	25.4	Tellurium	<0.5
Chloride	612	Mercury	<0.001	Terbium	0.007
Chromium	<0.5	Molybdenum	<0.5	Thallium	<0.5
Cobalt	<0.5	Neodymium	0.170	Thorium	1.30
Copper	<0.5	Nickel	0.75	Thulium	0.004
Dysprosium	0.045	Niobium	<0.5	Tin	0.029
Erbium	0.033	Osmium	<0.001	Titanium	11.4
Europium	0.013	Palladium	0.179	Tungsten	<0.5
Fluoride	3.57	Phosphorous	189	Vanadium	<0.5
Gadolinium	0.044	Platinum	<0.001	Ytterbium	0.030
Gallium	0.307	Potassium	70.0	Yttrium	<0.5
Germanium	<0.001	Praseodymium	0.040	Zinc	6.07
Gold	<0.5	Rhenium	0.001	Zirconium	<0.5
		Rhodium	0.061		

Source: 2017 Test Certificate for Aquamin® Soluble, assessed by Advanced Laboratories, Inc. (Salt Lake City), for client Marigot Limited (Ireland).

Supplement Table 2. Antibodies used for quantitative immunohistochemistry (IHC)

<u>Antibody</u>	<u>Vendor</u>	<u>Catalog #</u>	<u>Dilution</u>	<u>Incubation Time</u>	<u>Retrieval Method</u>
Ms <u>CK20</u> mAb clone K _s 20.8	Dako	M7019	1:100	60 min	FLEX TRS High pH 9.0, 20 min
Rb <u>Desmoglein-2</u> pAb	Sigma	HPA004896	1:200	30 min	^a HIER pH 6.0
Rb <u>Ki-67</u> mAb clone SP6	Cell Marque	275R-16	1:250	30 min	^b HIER pH 9.0, 20 min
Rb <u>LI Cadherin</u> (CDH17) mAb clone EPR3996	abcam	Ab109190	1:250	60 min	^b HIER pH 9.0

^aHIER pH 6: Heat induced epitope retrieval Citrate buffer pH6

^bHIER pH 9: Heat induced epitope retrieval 10 mM Tris HCl/1 mM EDTA buffer pH9

Supplement Table 3. Altered (and common) proteins among different concentrations of Aquamin®

Proteins	Aquamin			
	1.5mM	2.1mM	3.0mM	4.5mM
Proteins common with all 4 concentrations (Aquamin 1.5, 2.1, 3.0, 4.5 mM) (3 common proteins)				
Cadherin-17	*2.83±0.22	*2.95±0.60	*3.24±0.67	*3.62±0.70
Desmoglein-2	*2.07±0.17	*2.10±0.25	*2.28±0.37	*2.36±0.40
Ly6/PLAUR domain-containing protein 8	*2.12±0.22	*2.14±0.50	*2.46±0.40	*2.64±0.93
Proteins common with 3 concentrations (Aquamin 2.1, 3.0, 4.5 mM) (6 common proteins)				
Calcium-activated chloride channel regulator 4	*2.03±0.28	*2.24±0.51	*2.31±0.27	*3.01±0.74
Natural resistance-associated macrophage protein 2	*1.91±0.42	*2.20±0.43	*2.56±0.36	*2.68±0.54
CEACAM7	*1.84±0.32	*2.00±0.08	*2.23±0.37	*2.44±0.50
Fibrinogen silencer-binding protein	*0.61±0.09	*0.44±0.10	*0.36±0.03	*0.22±0.13
Neurogranin	*0.54±0.05	*0.38±0.16	*0.30±0.13	*0.18±0.09
Stathmin	*0.58±0.07	*0.47±0.02	*0.37±0.01	*0.29±0.12
Proteins common with 2 concentrations (Aquamin 3.0, 4.5 mM) (21 common proteins)				
Zinc transporter ZIP4	*2.01±0.55	*2.08±0.46	*2.63±0.77	*2.83±0.96
Apolipoprotein A-I	1.62±0.61	*1.96±0.46	*2.39±0.28	*2.68±0.30
Nuclear receptor subfamily 0 group B member 1	2.59±1.13	5.71±3.91	4.69±2.45	6.68±4.11
Protein RRP5 homolog (NF-kappa-B-binding protein)	*0.72±0.03	*0.54±0.12	*0.44±0.15	*0.41±0.06
DNA replication licensing factor MCM3	*0.70±0.07	*0.57±0.06	*0.44±0.07	*0.34±0.13
Heterogeneous nuclear ribonucleoprotein D-like	*0.69±0.06	*0.59±0.02	*0.50±0.04	*0.42±0.11
Serine/arginine-rich splicing factor 6	*0.67±0.15	*0.56±0.11	*0.47±0.10	*0.37±0.10
Nucleophosmin	*0.59±0.06	*0.55±0.06	*0.43±0.04	*0.35±0.09
Proliferating cell nuclear antigen	*0.65±0.01	*0.59±0.08	*0.45±0.05	*0.36±0.10
Nucleolar RNA helicase 2	*0.63±0.07	*0.52±0.12	*0.43±0.06	*0.34±0.04
Proliferation marker protein Ki-67	*0.58±0.08	*0.48±0.11	*0.39±0.13	*0.31±0.08
Nuclear autoantigenic sperm protein	*0.66±0.07	*0.57±0.03	*0.45±0.03	*0.37±0.11
U3 small nucleolar RNA-interacting protein 2	*0.62±0.03	*0.51±0.06	*0.38±0.01	*0.32±0.10
SWI/SNF complex subunit SMARCC1	*0.69±0.08	*0.54±0.07	*0.48±0.04	*0.41±0.13
Translation machinery-associated protein 7	*0.63±0.07	*0.57±0.10	*0.49±0.06	*0.44±0.09
Nucleolin	*0.70±0.09	*0.57±0.02	*0.48±0.04	*0.41±0.11
Inosine-5'-monophosphate dehydrogenase 2	*0.63±0.03	*0.56±0.13	*0.43±0.11	*0.35±0.12
Nucleolar and coiled-body phosphoprotein 1	*0.63±0.05	*0.53±0.06	*0.44±0.06	*0.37±0.10
PC4 and SFRS1-interacting protein	*0.72±0.10	*0.56±0.05	*0.48±0.05	*0.41±0.12
Receptor-type tyrosine-protein phosphatase F	*0.56±0.09	*0.55±0.11	*0.50±0.08	*0.45±0.07
Cytokine-induced protein with coiled-coil domain	*0.69±0.02	*0.52±0.13	*0.45±0.10	*0.42±0.11
Proteins common with 1 concentration (Aquamin 2.1 mM) (7 common proteins)				
Aminopeptidase N	*1.91±0.21	*2.01±0.25	*1.85±0.27	*2.00±0.36
Meprin A subunit alpha	*1.91±0.36	*2.02±0.27	*2.32±0.71	2.37±0.96
CEACAM1	1.72±0.52	5.25±4.20	2.01±1.12	1.80±1.18
CEACAM 5	1.37±0.29	*2.37±0.51	1.81±0.79	1.71±0.82
CEACAM 6	1.25±0.35	*2.13±0.35	1.50±0.78	1.33±0.80
Leucine zipper putative tumor suppressor 1	0.92±0.26	1.54±1.98	1.98±2.19	1.46±0.98
Cyclic AMP-dependent transcription factor ATF-7	*1.37±0.13	*2.25±0.37	*1.76±0.45	1.74±0.57
Proteins common with 1 concentration (Aquamin 3.0 mM) (1 common proteins)				
Integrin alpha-5	*1.69±0.42	*1.80±0.26	*2.21±0.58	*2.27±0.67
Proteins common with 1 concentration (Aquamin 4.5 mM) (33 common proteins)				
Sodium/glucose cotransporter 1	*1.40±0.16	*1.73±0.10	*1.94±0.37	*2.20±0.28
Laminin subunit alpha-1	*2.00±0.62	*2.15±0.38	*2.00±0.49	*2.59±0.44
Laminin subunit beta-1	*2.14±0.70	*2.20±0.48	*2.12±0.56	*2.85±0.42
Laminin subunit beta-2	*1.91±0.49	*2.03±0.34	*1.90±0.30	*2.32±0.30
Laminin subunit gamma-1	*2.03±0.58	*2.07±0.37	*2.01±0.47	*2.68±0.30
Nidogen-1 (Entactin)	1.70±0.49	*1.66±0.37	*1.72±0.37	*2.11±0.28
HMG-CoA synthase, mitochondrial	*1.52±0.12	*1.74±0.23	*1.95±0.22	*2.09±0.18
E-NPP 3	*1.41±0.15	*1.60±0.18	*1.81±0.19	*2.04±0.25

Copper-transporting ATPase 2	1.39±0.52	*1.62±0.22	*1.94±0.16	*2.28±0.04
Beta-glucuronidase	*1.29±0.06	*1.51±0.23	*1.51±0.17	*2.00±0.27
Keratin, type I cytoskeletal 16	0.93±0.32	0.72±0.37	0.57±0.42	1.37±0.91
Ribosome biogenesis protein BMS1 homolog	0.92±0.32	0.79±0.34	*0.61±0.15	*0.49±0.04
Ras GTPase-activating protein-binding protein 1	*0.75±0.07	*0.61±0.10	*0.55±0.09	*0.47±0.10
HEAT repeat-containing protein 1	*0.69±0.17	*0.64±0.08	*0.55±0.07	*0.43±0.03
DNA replication licensing factor MCM4	*0.70±0.02	*0.67±0.09	*0.52±0.07	*0.43±0.10
Non-histone chromosomal protein HMG-17	*0.73±0.05	*0.55±0.18	*0.49±0.16	*0.43±0.13
Ribosome biogenesis protein WDR12	*0.77±0.11	*0.67±0.10	*0.58±0.04	*0.47±0.05
DNA replication licensing factor MCM5	*0.70±0.10	*0.57±0.18	*0.49±0.16	*0.40±0.13
Probable 28S rRNA (NOP2)	*0.74±0.06	*0.60±0.09	*0.51±0.06	*0.43±0.12
Nucleolar GTP-binding protein 2	*0.59±0.01	*0.64±0.15	*0.55±0.04	*0.30±0.08
Putative RNA-binding protein Luc7-like 1	*0.69±0.07	*0.72±0.11	*0.58±0.15	*0.47±0.07
CD44 antigen	*0.61±0.01	*0.58±0.12	*0.48±0.12	*0.40±0.09
DNA replication licensing factor MCM7	*0.77±0.08	0.74±0.23	*0.56±0.23	*0.41±0.12
Palmitoyl-protein thioesterase 1	*0.66±0.03	*0.63±0.05	*0.60±0.03	*0.49±0.05
CD99 antigen	*0.78±0.03	*0.64±0.10	*0.59±0.10	*0.39±0.04
Pumilio homolog 3	0.78±0.25	*0.70±0.06	*0.46±0.14	*0.33±0.19
Heterogeneous nuclear ribonucleoprotein A0	*0.71±0.09	*0.55±0.19	*0.49±0.20	*0.39±0.16
DNA replication licensing factor MCM2	*0.70±0.06	*0.62±0.16	*0.47±0.15	*0.32±0.11
Importin subunit alpha-1	*0.70±0.08	*0.66±0.11	*0.57±0.05	*0.48±0.04
Ribonucleoside-diphosphate reductase large subunit	*0.68±0.06	*0.56±0.21	*0.46±0.14	*0.35±0.15
Serine/threonine-protein kinase VRK1	*0.70±0.07	*0.61±0.11	*0.52±0.11	*0.41±0.12
Gem-associated protein 5	*0.82±0.11	*0.65±0.13	*0.53±0.16	*0.47±0.11
Transformer-2 protein homolog beta	0.85±0.24	*0.56±0.07	*0.53±0.04	*0.48±0.06

These values represent average fold change (of abundance ratio) compared to control conditions (0.15 mM calcium) ± SDs. These proteins were up-regulated by 1.8-fold or greater across the three colonoids. *Represents significance in up-regulation as compared to the control at $p < 0.05$ level.

Supplement Table 4. Most significant altered proteins with Aquamin® (p value <0.05 across all conditions)

Proteins	p value (Nested)	Aquamin			
		1.5mM	2.1mM	3.0mM	4.5mM
Poly(U)-binding-splicing factor PUF60	0.00003	0.835±0.001	0.794±0.062	0.714±0.043	0.670±0.037
Superoxide dismutase, mitochondrial	0.00004	1.272±0.106	1.427±0.141	1.418±0.065	1.556±0.007
Ribosomal L1 domain-containing protein 1	0.00004	0.658±0.003	0.592±0.068	0.504±0.078	0.444±0.136
Nucleolar protein 56	0.00004	0.756±0.002	0.749±0.069	0.682±0.086	0.598±0.101
Solute carrier family 12 member 2	0.00005	0.766±0.078	0.711±0.020	0.661±0.003	0.573±0.066
ELAV-like protein 1	0.0001	0.800±0.016	0.748±0.026	0.678±0.003	0.615±0.067
KHDRBS1	0.0001	0.808±0.039	0.782±0.003	0.753±0.005	0.712±0.056
Stathmin	0.0001	0.576±0.072	0.466±0.019	0.371±0.006	0.285±0.122
IST1 homolog	0.0001	1.187±0.004	1.127±0.030	1.243±0.035	1.261±0.115
Methylglutaconyl-CoA hydratase, mitochondrial	0.0001	1.162±0.038	1.246±0.006	1.282±0.062	1.241±0.092
U3 small nucleolar RNA-interacting protein 2	0.0001	0.622±0.026	0.505±0.061	0.378±0.007	0.319±0.098
Splicing factor 3B subunit 2	0.0002	0.819±0.048	0.732±0.005	0.707±0.005	0.628±0.065
Glycylpeptide N-tetradecanoyltransferase 1	0.0002	0.869±0.033	0.842±0.005	0.843±0.003	0.751±0.032
Eukaryotic peptide chain release factor GTP-binding subunit ERF3A	0.0002	0.835±0.036	0.773±0.005	0.706±0.036	0.656±0.072
Cold shock domain-containing protein E1	0.0002	0.901±0.024	0.866±0.037	0.795±0.005	0.754±0.057
Zinc finger CCCH domain-containing protein 15	0.0003	0.778±0.010	0.710±0.018	0.676±0.008	0.629±0.050
Rab GTPase-binding effector protein 1	0.0003	0.825±0.037	0.817±0.024	0.741±0.007	0.710±0.021
Leucine-rich repeat-containing protein 40	0.0003	0.855±0.054	0.803±0.027	0.776±0.006	0.708±0.008
Unconventional myosin-XVB	0.0003	1.257±0.093	1.246±0.068	1.322±0.011	1.344±0.133
Acid sphingomyelinase-like phosphodiesterase 3a	0.0004	1.411±0.102	1.356±0.137	1.356±0.014	1.327±0.130
Thyroid hormone receptor-associated protein 3	0.0004	0.764±0.023	0.695±0.017	0.662±0.009	0.588±0.055
Band 4.1-like protein 2	0.0004	0.807±0.018	0.760±0.007	0.723±0.011	0.681±0.064
Signal recognition particle 9 kDa protein	0.0005	0.740±0.041	0.650±0.037	0.596±0.012	0.528±0.077
Succinate dehydrogenase flavoprotein subunit, mitochondrial	0.0005	1.073±0.003	1.124±0.051	1.171±0.042	1.176±0.066
RNA-binding protein EWS	0.001	0.857±0.051	0.767±0.040	0.735±0.009	0.688±0.045
40S ribosomal protein S6	0.001	0.738±0.058	0.743±0.009	0.665±0.021	0.640±0.085
CD44 antigen	0.001	0.610±0.012	0.575±0.121	0.482±0.116	0.396±0.092
Leydig cell tumor 10 kDa protein homolog	0.001	0.669±0.010	0.633±0.016	0.556±0.023	0.494±0.069
E3 ubiquitin-protein ligase RBBP6	0.001	0.799±0.007	0.691±0.063	0.687±0.093	0.640±0.085
2,4-dienoyl-CoA reductase, mitochondrial	0.001	1.12±0.0290	1.127±0.017	1.177±0.008	1.216±0.079
TATA-binding protein-associated factor 2N	0.001	0.732±0.050	0.633±0.012	0.569±0.048	0.495±0.104
40S ribosomal protein S17	0.001	0.798±0.039	0.747±0.025	0.689±0.011	0.648±0.045
Thymidylate kinase	0.001	0.832±0.007	0.774±0.010	0.732±0.029	0.647±0.050

Plectin	0.001	1.273±0.096	1.454±0.077	1.434±0.142	1.506±0.027
Ubiquitin-conjugating enzyme E2 E3	0.001	0.725±0.096	0.584±0.014	0.539±0.046	0.524±0.054
Very-long-chain 3-oxoacyl-CoA reductase	0.001	1.284±0.014	1.418±0.135	1.532±0.110	1.533±0.142
Acyl-coenzyme A thioesterase 1	0.001	1.162±0.037	1.239±0.022	1.248±0.012	1.238±0.047
Alpha-methylacyl-CoA racemase	0.001	1.269±0.050	1.439±0.024	1.428±0.032	1.419±0.076
Proliferating cell nuclear antigen	0.001	0.648±0.013	0.589±0.079	0.451±0.047	0.364±0.102
Hydroxymethylglutaryl-CoA synthase, cytoplasmic	0.001	0.838±0.059	0.778±0.010	0.640±0.051	0.541±0.120
Elongation factor 2	0.001	0.880±0.005	0.847±0.051	0.803±0.035	0.787±0.057
Pituitary tumor-transforming gene 1 protein-interacting protein	0.001	1.325±0.069	1.225±0.052	1.375±0.022	1.399±0.166
Neuroplastin	0.001	1.155±0.013	1.140±0.012	1.144±0.008	1.181±0.065
Putative RNA-binding protein Luc7-like 2	0.001	0.716±0.041	0.630±0.014	0.587±0.020	0.538±0.072
Heterogeneous nuclear ribonucleoprotein A3	0.001	0.831±0.046	0.720±0.012	0.706±0.033	0.635±0.080
m7GpppX diphosphatase	0.001	0.778±0.032	0.733±0.049	0.679±0.013	0.597±0.061
Heterogeneous nuclear ribonucleoprotein D-like	0.001	0.692±0.064	0.585±0.016	0.496±0.036	0.418±0.107
Lysosomal alpha-glucosidase	0.001	1.256±0.035	1.314±0.036	1.460±0.029	1.492±0.043
SUMO-activating enzyme subunit 1	0.001	0.785±0.037	0.736±0.027	0.698±0.014	0.615±0.082
Carcinoembryonic antigen-related cell adhesion molecule 7	0.001	1.835±0.322	1.998±0.077	2.227±0.372	2.438±0.503
U6 snRNA-associated Sm-like protein LSm2	0.001	0.778±0.025	0.771±0.071	0.658±0.016	0.617±0.097
Thiosulfate sulfurtransferase	0.001	1.209±0.013	1.273±0.111	1.357±0.112	1.420±0.203
Matrin-3	0.001	0.794±0.020	0.738±0.048	0.684±0.024	0.609±0.017
Transcription factor BTF3	0.001	0.773±0.065	0.684±0.015	0.630±0.061	0.566±0.071
Ran GTPase-activating protein 1	0.001	0.772±0.042	0.737±0.045	0.679±0.016	0.630±0.066
Aldehyde dehydrogenase, mitochondrial	0.001	1.167±0.031	1.240±0.016	1.252±0.037	1.282±0.063
Eukaryotic translation initiation factor 5A-1	0.001	0.798±0.034	0.730±0.014	0.669±0.042	0.626±0.087
Chromobox protein homolog 3	0.001	0.730±0.027	0.681±0.017	0.600±0.019	0.558±0.093
General transcription factor II-I	0.001	0.743±0.068	0.646±0.024	0.587±0.019	0.538±0.102
DnaJ homolog subfamily C member 8	0.001	0.792±0.069	0.706±0.015	0.638±0.027	0.594±0.107
Bcl-2-associated transcription factor 1	0.001	0.792±0.036	0.716±0.016	0.668±0.017	0.610±0.033
Acyl-CoA:lysophosphatidylglycerol acyltransferase 1	0.001	1.174±0.045	1.263±0.090	1.304±0.022	1.331±0.105
Serine-threonine kinase receptor-associated protein	0.001	0.822±0.050	0.772±0.013	0.721±0.036	0.686±0.078
Alpha-taxilin	0.001	0.842±0.033	0.786±0.012	0.719±0.085	0.682±0.060
Maestro heat-like repeat-containing protein family member 1	0.001	1.135±0.027	1.315±0.022	1.354±0.060	1.331±0.092
Rap1 GTPase-GDP dissociation stimulator 1	0.001	0.810±0.037	0.795±0.036	0.725±0.015	0.677±0.023
Drebrin	0.001	0.704±0.079	0.599±0.045	0.585±0.020	0.534±0.085
General transcription factor IIF subunit 1	0.001	0.804±0.039	0.766±0.034	0.687±0.017	0.677±0.067
Clustered mitochondria protein homolog	0.001	0.828±0.010	0.750±0.047	0.668±0.021	0.610±0.061
Nuclear autoantigenic sperm protein	0.002	0.657±0.069	0.565±0.028	0.452±0.025	0.374±0.110

Poly(rC)-binding protein 2	0.002	0.781±0.018	0.690±0.063	0.662±0.019	0.621±0.048
DNA topoisomerase 2-beta	0.002	0.769±0.016	0.740±0.062	0.676±0.018	0.566±0.081
Luc7-like protein 3	0.002	0.768±0.044	0.652±0.077	0.618±0.044	0.531±0.023
Heterogeneous nuclear ribonucleoprotein M	0.002	0.797±0.047	0.718±0.017	0.680±0.022	0.588±0.079
U2 small nuclear ribonucleoprotein B''	0.002	0.813±0.012	0.760±0.017	0.719±0.025	0.679±0.028
DNA replication licensing factor MCM4	0.002	0.701±0.018	0.666±0.091	0.522±0.065	0.432±0.097
Multidrug resistance protein 1	0.002	1.297±0.032	1.451±0.039	1.547±0.091	1.698±0.216
Serine beta-lactamase-like protein LACTB, mitochondrial	0.002	1.176±0.049	1.307±0.105	1.288±0.034	1.313±0.026
Keratin, type II cytoskeletal 8	0.002	1.25±0.0980	1.524±0.092	1.433±0.037	1.488±0.103
UDP-glucuronosyltransferase 1-10	0.002	1.298±0.131	1.327±0.143	1.388±0.033	1.394±0.138
Nuclear pore complex protein Nup155	0.002	0.832±0.011	0.832±0.059	0.800±0.063	0.801±0.046
Protein mono-ADP-ribosyltransferase PARP4	0.002	1.173±0.024	1.178±0.014	1.235±0.047	1.273±0.104
Polyadenylate-binding protein 1	0.002	0.826±0.012	0.788±0.071	0.736±0.039	0.713±0.071
Integrin alpha-3	0.002	0.919±0.027	0.903±0.028	0.859±0.010	0.868±0.035
Cadherin-17	0.002	2.834±0.216	2.952±0.600	3.235±0.672	3.616±0.703
Nucleolin	0.002	0.697±0.092	0.573±0.024	0.478±0.043	0.409±0.112
Tubulin beta chain	0.002	0.758±0.031	0.715±0.046	0.644±0.051	0.587±0.024
60S ribosomal protein L36	0.002	0.728±0.058	0.727±0.018	0.660±0.074	0.588±0.087
Kynurenine--oxoglutarate transaminase 3	0.002	0.865±0.038	0.849±0.019	0.845±0.011	0.790±0.044
NADH dehydrogenase 1 alpha subcomplex assembly factor 2	0.002	0.795±0.016	0.792±0.034	0.731±0.018	0.700±0.080
tRNA (cytosine(34)-C(5))-methyltransferase	0.002	0.811±0.031	0.793±0.040	0.730±0.018	0.661±0.050
Proteasome activator complex subunit 3	0.002	0.786±0.020	0.701±0.025	0.618±0.023	0.563±0.088
Serotransferrin	0.002	1.375±0.034	1.442±0.160	1.497±0.219	1.568±0.271
Elongation factor 1-alpha 1	0.002	0.871±0.010	0.858±0.046	0.780±0.052	0.750±0.076
La-related protein 4B	0.002	0.781±0.050	0.700±0.020	0.674±0.071	0.639±0.056
ADP-ribosylation factor-like protein 3	0.002	0.720±0.057	0.781±0.067	0.732±0.033	0.621±0.024
Disintegrin and metalloproteinase domain-containing protein 9	0.002	0.903±0.036	0.872±0.020	0.916±0.007	0.899±0.028
Beta-hexosaminidase subunit beta	0.002	1.296±0.027	1.365±0.066	1.486±0.129	1.554±0.169
Diphosphoinositol polyphosphate phosphohydrolase 2	0.002	1.216±0.057	1.301±0.092	1.437±0.043	1.587±0.208
Unconventional myosin-VIIb	0.002	1.259±0.024	1.371±0.100	1.465±0.133	1.476±0.158
Cytokine-induced protein with coiled-coil domain	0.002	0.688±0.021	0.516±0.127	0.447±0.102	0.418±0.114
Endothelial differentiation-related factor 1	0.002	0.762±0.075	0.617±0.025	0.562±0.032	0.512±0.078
Lupus La protein	0.002	0.753±0.060	0.669±0.038	0.608±0.026	0.552±0.085
RNA-binding motif protein, X chromosome	0.002	0.791±0.037	0.679±0.056	0.619±0.025	0.525±0.047
Nuclear migration protein nudC	0.002	0.747±0.026	0.692±0.051	0.602±0.027	0.558±0.065
E3 SUMO-protein ligase RanBP2	0.003	0.861±0.011	0.830±0.033	0.832±0.055	0.730±0.074
Farnesyl pyrophosphate synthase	0.003	1.137±0.013	1.242±0.088	1.241±0.068	1.229±0.087

ATP-binding cassette sub-family G member 2	0.003	1.558±0.140	1.761±0.089	1.781±0.142	1.804±0.219
BRCA2 and CDKN1A-interacting protein	0.003	0.697±0.055	0.682±0.074	0.566±0.029	0.515±0.063
Echinoderm microtubule-associated protein-like 4	0.003	0.872±0.011	0.879±0.017	0.848±0.022	0.819±0.029
Peroxisomal acyl-coenzyme A oxidase 3	0.003	1.168±0.049	1.193±0.019	1.247±0.038	1.206±0.024
GMP synthase [glutamine-hydrolyzing]	0.003	0.776±0.035	0.785±0.060	0.702±0.036	0.671±0.024
Zinc finger RNA-binding protein	0.003	0.852±0.012	0.765±0.075	0.751±0.074	0.716±0.097
CD99 antigen	0.003	0.781±0.027	0.636±0.099	0.592±0.096	0.386±0.035
HSPG2	0.003	1.131±0.013	1.227±0.040	1.237±0.050	1.316±0.104
U4/U6.U5 tri-snRNP-associated protein 1	0.003	0.848±0.037	0.792±0.026	0.755±0.020	0.709±0.059
Splicing factor 3A subunit 1	0.003	0.827±0.021	0.774±0.034	0.734±0.025	0.684±0.025
Villin-1	0.003	1.092±0.025	1.123±0.035	1.142±0.014	1.144±0.051
Pyruvate carboxylase, mitochondrial	0.003	1.290±0.031	1.331±0.155	1.360±0.162	1.345±0.134
Eukaryotic translation initiation factor 4E type 2	0.003	0.823±0.032	0.805±0.063	0.752±0.021	0.683±0.081
Palmitoyl-protein thioesterase 1	0.003	0.658±0.028	0.634±0.049	0.604±0.030	0.489±0.046
RNA-binding protein 14	0.003	0.795±0.018	0.688±0.050	0.653±0.062	0.574±0.072
Phosphatidate cytidyltransferase 1	0.003	1.126±0.014	1.283±0.121	1.271±0.090	1.309±0.091
Histone-binding protein RBBP7	0.003	0.742±0.051	0.675±0.059	0.591±0.032	0.524±0.075
Inosine-5'-monophosphate dehydrogenase 2	0.003	0.628±0.029	0.559±0.128	0.426±0.107	0.349±0.115
Eukaryotic translation initiation factor 6	0.003	0.868±0.030	0.815±0.037	0.804±0.021	0.770±0.020
Omega-amidase NIT2	0.004	0.859±0.027	0.828±0.055	0.844±0.016	0.821±0.017
Ectonucleoside triphosphate diphosphohydrolase 8	0.004	1.489±0.061	1.455±0.119	1.509±0.076	1.608±0.144
Peroxisomal acyl-coenzyme A oxidase 2	0.004	1.316±0.037	1.418±0.092	1.490±0.128	1.564±0.188
Signal recognition particle subunit SRP72	0.004	0.898±0.011	0.858±0.051	0.840±0.037	0.753±0.022
Sodium/glucose cotransporter 1	0.004	1.398±0.161	1.726±0.098	1.940±0.375	2.204±0.283
Ectonucleoside triphosphate diphosphohydrolase 5	0.004	1.257±0.095	1.336±0.041	1.342±0.092	1.387±0.153
40S ribosomal protein S10	0.004	0.772±0.066	0.709±0.048	0.638±0.030	0.582±0.056
DnaJ homolog subfamily A member 4	0.004	1.254±0.107	1.212±0.066	1.336±0.041	1.401±0.138
Regulator of nonsense transcripts 1	0.004	0.904±0.020	0.854±0.017	0.832±0.017	0.788±0.043
Scaffold attachment factor B1	0.004	0.781±0.044	0.690±0.028	0.649±0.032	0.589±0.079
Nucleolar RNA helicase 2	0.004	0.632±0.071	0.519±0.118	0.425±0.064	0.341±0.041
Junction plakoglobin	0.004	1.597±0.176	1.712±0.118	1.768±0.130	1.774±0.111
Medium-chain specific acyl-CoA dehydrogenase, mitochondrial	0.004	1.164±0.058	1.309±0.039	1.323±0.066	1.362±0.136
Prefoldin subunit 5	0.004	0.838±0.016	0.705±0.096	0.723±0.092	0.681±0.091
Carboxylesterase 3	0.004	1.240±0.101	1.313±0.043	1.245±0.030	1.311±0.120
Nucleophosmin	0.004	0.593±0.061	0.550±0.063	0.427±0.042	0.353±0.091
2'-deoxynucleoside 5'-phosphate N-hydrolase 1	0.004	0.873±0.013	0.834±0.035	0.802±0.036	0.768±0.054
Desmoglein-2	0.004	2.069±0.172	2.104±0.252	2.283±0.367	2.356±0.396

Procollagen-lysine,2-oxoglutarate 5-dioxygenase 2	0.004	1.186±0.070	1.288±0.125	1.406±0.055	1.429±0.062
Hydroxymethylglutaryl-CoA synthase, mitochondrial	0.004	1.520±0.122	1.742±0.225	1.954±0.222	2.089±0.179
Plasminogen activator inhibitor 1 RNA-binding protein	0.004	0.740±0.055	0.685±0.042	0.599±0.036	0.554±0.079
Very long-chain specific acyl-CoA dehydrogenase, mitochondrial	0.004	1.143±0.050	1.326±0.046	1.363±0.052	1.375±0.051
Catechol O-methyltransferase domain-containing protein 1	0.004	1.208±0.026	1.265±0.063	1.216±0.036	1.215±0.068
Tissue alpha-L-fucosidase	0.004	1.617±0.201	1.812±0.125	1.902±0.270	2.065±0.379
Xanthine dehydrogenase/oxidase	0.004	1.267±0.039	1.345±0.082	1.384±0.052	1.403±0.059
PEST proteolytic signal-containing nuclear protein	0.005	0.714±0.028	0.617±0.095	0.556±0.084	0.544±0.116
Histone-binding protein RBBP4	0.005	0.758±0.076	0.625±0.034	0.621±0.050	0.568±0.103
U6 snRNA-associated Sm-like protein LSm6	0.005	0.843±0.053	0.858±0.016	0.800±0.039	0.755±0.071
Aspartate--tRNA ligase, mitochondrial	0.005	0.949±0.017	0.906±0.011	0.880±0.018	0.875±0.029
Heterogeneous nuclear ribonucleoprotein D0	0.005	0.729±0.069	0.641±0.047	0.596±0.038	0.508±0.089
RNA-binding protein 39	0.005	0.796±0.055	0.728±0.063	0.669±0.064	0.615±0.037
Acidic leucine-rich nuclear phosphoprotein 32 family member A	0.005	0.844±0.052	0.727±0.034	0.733±0.029	0.718±0.031
SWI/SNF complex subunit SMARCC1	0.005	0.692±0.075	0.543±0.073	0.478±0.044	0.406±0.126
Actin-like protein 6A	0.005	0.890±0.013	0.863±0.042	0.794±0.029	0.779±0.054
Serpin H1	0.005	1.132±0.028	1.192±0.027	1.192±0.061	1.228±0.042
Thioredoxin domain-containing protein 5	0.005	0.882±0.014	0.814±0.028	0.803±0.030	0.789±0.071
Pre-mRNA-processing factor 19	0.005	0.795±0.048	0.740±0.032	0.688±0.033	0.635±0.099
Ubiquitin-like protein 3	0.005	1.320±0.056	1.456±0.078	1.491±0.076	1.502±0.182
Eukaryotic translation initiation factor 3 subunit J	0.006	0.842±0.027	0.768±0.029	0.728±0.030	0.678±0.077
Eukaryotic translation initiation factor 3 subunit K	0.006	0.903±0.029	0.810±0.022	0.817±0.045	0.786±0.027
U1 small nuclear ribonucleoprotein A	0.006	0.794±0.072	0.767±0.027	0.703±0.038	0.654±0.092
Ubiquitin-associated protein 2-like	0.006	0.720±0.051	0.615±0.071	0.574±0.043	0.550±0.066
Protein phosphatase 1 regulatory subunit 3G	0.006	1.239±0.035	1.265±0.046	1.394±0.187	1.325±0.114
Ly6/PLAUR domain-containing protein 8	0.006	2.117±0.215	2.137±0.502	2.459±0.396	2.642±0.927
28 kDa heat- and acid-stable phosphoprotein	0.006	0.774±0.065	0.685±0.035	0.644±0.061	0.577±0.089
Heat shock 70 kDa protein 4L	0.006	0.787±0.050	0.738±0.031	0.682±0.055	0.624±0.109
Inter-alpha-trypsin inhibitor heavy chain H4	0.006	1.456±0.076	1.776±0.310	1.791±0.320	1.977±0.195
Cell division cycle and apoptosis regulator protein 1	0.006	0.801±0.036	0.704±0.065	0.663±0.037	0.606±0.065
S-adenosylmethionine synthase isoform type-2	0.006	0.877±0.016	0.886±0.033	0.783±0.037	0.759±0.037
Solute carrier family 15 member 1	0.006	1.556±0.094	1.675±0.138	1.725±0.147	1.806±0.361
Constitutive coactivator of PPAR-gamma-like protein 1	0.006	0.933±0.021	0.901±0.013	0.893±0.040	0.816±0.024
Splicing factor 3B subunit 1	0.007	0.830±0.050	0.796±0.025	0.734±0.037	0.654±0.108
Sulfotransferase family cytosolic 1B member 1	0.007	1.533±0.184	1.585±0.199	1.680±0.124	1.736±0.367
60S ribosomal protein L12	0.007	0.783±0.027	0.769±0.049	0.690±0.056	0.650±0.082
Nuclease-sensitive element-binding protein 1	0.007	0.783±0.057	0.713±0.035	0.623±0.049	0.555±0.074

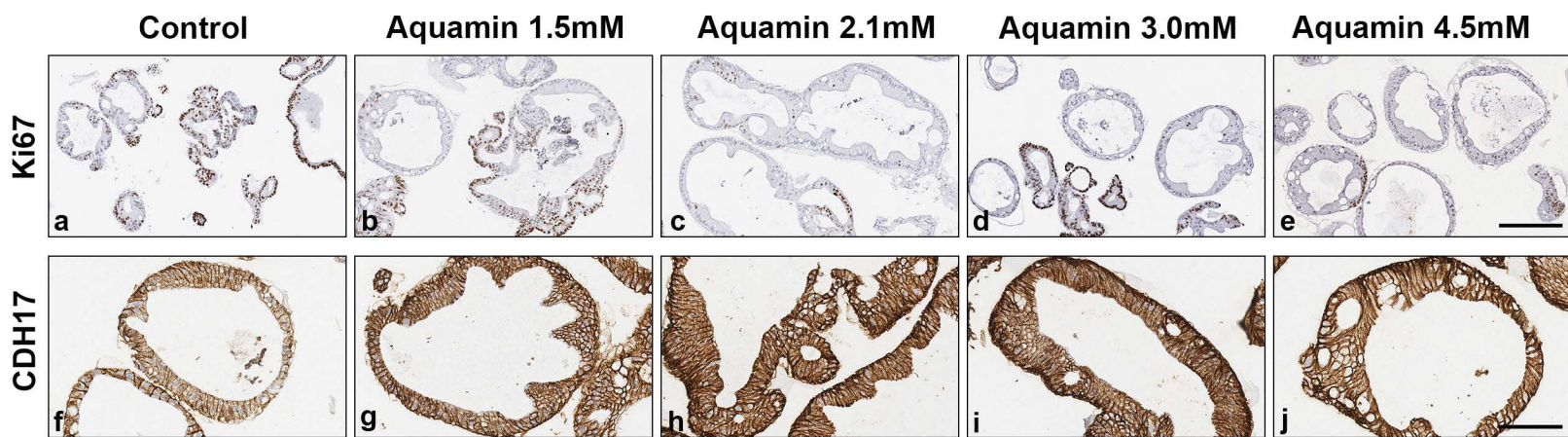
Calcium-activated chloride channel regulator 4	0.007	2.029±0.281	2.236±0.506	2.311±0.269	3.006±0.742
Aldose 1-epimerase	0.007	1.157±0.052	1.169±0.046	1.262±0.084	1.294±0.049
Serine/arginine repetitive matrix protein 2	0.007	0.760±0.031	0.703±0.088	0.647±0.074	0.629±0.074
40S ribosomal protein SA	0.007	0.793±0.061	0.722±0.036	0.648±0.043	0.615±0.089
H/ACA ribonucleoprotein complex subunit DKC1	0.007	0.762±0.031	0.742±0.036	0.675±0.075	0.613±0.096
Peroxisomal acyl-coenzyme A oxidase 1	0.007	1.252±0.093	1.243±0.091	1.373±0.082	1.457±0.081
Mitochondrial-processing peptidase subunit alpha	0.007	0.803±0.068	0.819±0.032	0.776±0.030	0.718±0.058
RNA-binding protein 4	0.008	0.824±0.027	0.729±0.047	0.723±0.035	0.640±0.099
Nuclear pore complex protein Nup98-Nup96	0.008	0.796±0.035	0.705±0.090	0.639±0.079	0.598±0.046
Branched-chain-amino-acid aminotransferase, mitochondrial	0.008	0.814±0.034	0.824±0.024	0.791±0.048	0.735±0.068
Enhancer of mRNA-decapping protein 3	0.008	0.729±0.085	0.719±0.048	0.672±0.061	0.666±0.042
Nascent polypeptide-associated complex subunit alpha-2	0.008	0.788±0.044	0.728±0.053	0.640±0.044	0.611±0.054
WD40 repeat-containing protein SMU1	0.008	0.833±0.047	0.883±0.017	0.755±0.054	0.692±0.099
Talin-1	0.008	0.919±0.012	0.892±0.016	0.881±0.020	0.867±0.050
Vinculin	0.008	1.095±0.015	1.237±0.065	1.178±0.060	1.188±0.049
Translation machinery-associated protein 7	0.008	0.631±0.067	0.569±0.098	0.485±0.055	0.439±0.094
Natural resistance-associated macrophage protein 2	0.008	1.911±0.419	2.203±0.427	2.564±0.357	2.683±0.543
RNA-binding protein Musashi homolog 2	0.008	0.913±0.022	0.829±0.043	0.800±0.043	0.807±0.027
Peptidyl-prolyl cis-trans isomerase D	0.008	0.891±0.019	0.848±0.024	0.800±0.028	0.788±0.070
Beta-galactosidase	0.008	1.321±0.066	1.462±0.087	1.581±0.171	1.619±0.180
MAGUK p55 subfamily member 7	0.008	1.052±0.017	1.146±0.047	1.108±0.018	1.183±0.052
Tubulin beta-4B chain	0.008	0.872±0.022	0.882±0.036	0.832±0.031	0.785±0.031
Desmocollin-2	0.009	1.386±0.072	1.345±0.109	1.385±0.134	1.427±0.123
Transmembrane protease serine 2	0.009	1.532±0.109	1.627±0.196	1.828±0.180	2.077±0.472
Treacle protein	0.009	0.726±0.055	0.635±0.047	0.587±0.078	0.530±0.132
NHP2-like protein 1	0.009	0.688±0.042	0.570±0.076	0.529±0.084	0.473±0.107
Nucleolar and coiled-body phosphoprotein 1	0.009	0.627±0.051	0.534±0.056	0.440±0.063	0.366±0.104
Hsp90 co-chaperone Cdc37	0.009	0.907±0.030	0.864±0.046	0.839±0.025	0.831±0.029
High mobility group protein HMG-I/HMG-Y	0.009	0.841±0.024	0.784±0.076	0.772±0.066	0.753±0.070
Transcription intermediary factor 1-beta	0.009	0.744±0.037	0.625±0.089	0.579±0.085	0.504±0.107
Fucose mutarotase	0.010	1.436±0.133	1.759±0.253	1.832±0.186	2.041±0.575
ENPP3	0.010	1.407±0.150	1.598±0.182	1.812±0.194	2.038±0.250
Aminopeptidase N	0.010	1.909±0.213	2.010±0.247	1.854±0.271	2.002±0.361
DNA replication licensing factor MCM3	0.010	0.697±0.071	0.570±0.055	0.443±0.068	0.343±0.125
Probable 28S rRNA (cytosine(4447)-C(5))-methyltransferase	0.010	0.735±0.061	0.598±0.085	0.513±0.058	0.425±0.115
Heterogeneous nuclear ribonucleoprotein A1	0.010	0.742±0.039	0.664±0.106	0.587±0.089	0.540±0.103
60S ribosomal protein L18	0.010	0.760±0.041	0.784±0.046	0.716±0.046	0.629±0.051

60S ribosomal protein L19	0.010	0.774±0.045	0.723±0.045	0.684±0.045	0.597±0.064
Pre-mRNA-processing factor 40 homolog A	0.010	0.848±0.052	0.787±0.033	0.804±0.056	0.767±0.062
Eukaryotic translation initiation factor 3 subunit A	0.010	0.849±0.025	0.831±0.044	0.786±0.036	0.727±0.068
Multifunctional methyltransferase subunit TRM112-like protein	0.010	0.725±0.079	0.617±0.053	0.566±0.059	0.478±0.104
Glycogen debranching enzyme	0.010	1.088±0.026	1.121±0.045	1.137±0.035	1.171±0.033
Heterogeneous nuclear ribonucleoprotein K	0.010	0.800±0.054	0.700±0.045	0.656±0.055	0.596±0.055
Beta-glucuronidase	0.011	1.287±0.058	1.513±0.228	1.510±0.170	2.002±0.270
Caprin-1	0.011	0.799±0.033	0.726±0.042	0.676±0.053	0.653±0.053
4F2 cell-surface antigen heavy chain	0.011	0.813±0.048	0.783±0.034	0.686±0.060	0.623±0.076
RNA transcription, translation and transport factor protein	0.011	0.861±0.040	0.788±0.035	0.764±0.037	0.728±0.055
Heterogeneous nuclear ribonucleoprotein F	0.011	0.790±0.045	0.692±0.046	0.663±0.060	0.597±0.091
Cyclin-dependent kinase 12	0.011	0.787±0.068	0.727±0.042	0.732±0.055	0.618±0.068
Phytanoyl-CoA dioxygenase, peroxisomal	0.011	1.119±0.025	1.275±0.115	1.321±0.068	1.357±0.127
Peroxiredoxin-like 2A	0.012	1.296±0.062	1.469±0.142	1.527±0.138	1.597±0.184
P2X purinoceptor 4	0.012	1.411±0.135	1.516±0.167	1.567±0.130	1.630±0.267
Cadherin-related family member 5	0.012	1.507±0.143	1.613±0.148	1.768±0.230	1.949±0.478
Translation initiation factor eIF-2B subunit gamma	0.012	0.823±0.044	0.721±0.081	0.710±0.047	0.680±0.072
Apoptosis-associated speck-like protein containing a CARD	0.012	0.786±0.071	0.705±0.084	0.630±0.057	0.594±0.129
Splicing factor 3A subunit 3	0.012	0.818±0.041	0.777±0.055	0.749±0.042	0.690±0.077
C-1-tetrahydrofolate synthase, cytoplasmic	0.012	0.806±0.048	0.752±0.053	0.704±0.048	0.621±0.065
40S ribosomal protein S5	0.012	0.841±0.039	0.750±0.041	0.709±0.081	0.685±0.109
Heterogeneous nuclear ribonucleoprotein U-like protein 1	0.012	0.832±0.054	0.802±0.034	0.770±0.044	0.711±0.087
Sigma intracellular receptor 2	0.012	1.304±0.120	1.484±0.123	1.396±0.090	1.325±0.124
Receptor-type tyrosine-protein phosphatase F	0.012	0.559±0.086	0.545±0.111	0.499±0.075	0.449±0.069
SH3 domain-binding glutamic acid-rich-like protein	0.012	0.701±0.049	0.611±0.115	0.573±0.096	0.557±0.108
DnaJ homolog subfamily C member 7	0.012	0.799±0.049	0.787±0.037	0.692±0.055	0.649±0.097
Translation initiation factor eIF-2B subunit epsilon	0.013	0.842±0.053	0.820±0.032	0.745±0.071	0.686±0.087
Guanine nucleotide-binding protein subunit alpha-11	0.013	1.302±0.067	1.439±0.150	1.562±0.251	1.570±0.210
Syndecan-1	0.013	0.771±0.040	0.736±0.056	0.731±0.048	0.755±0.061
Actin-histidine N-methyltransferase	0.013	0.843±0.051	0.833±0.030	0.737±0.051	0.706±0.058
Replication factor C subunit 4	0.013	0.681±0.106	0.635±0.059	0.559±0.076	0.492±0.114
Carnitine O-palmitoyltransferase 1, liver isoform	0.013	1.196±0.078	1.278±0.062	1.353±0.102	1.360±0.145
La-related protein 1	0.013	0.801±0.036	0.697±0.079	0.643±0.071	0.599±0.069
E3 ubiquitin-protein ligase HUWE1	0.014	0.919±0.030	0.900±0.026	0.903±0.019	0.862±0.044
Proline-, glutamic acid- and leucine-rich protein 1	0.014	0.818±0.033	0.767±0.065	0.738±0.069	0.650±0.106
Protein RCC2	0.014	0.735±0.047	0.745±0.079	0.624±0.097	0.544±0.124
40S ribosomal protein S11	0.014	0.759±0.079	0.783±0.061	0.692±0.052	0.645±0.108

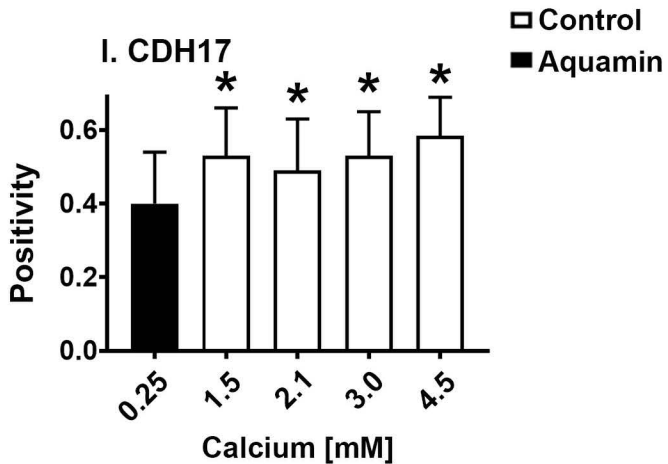
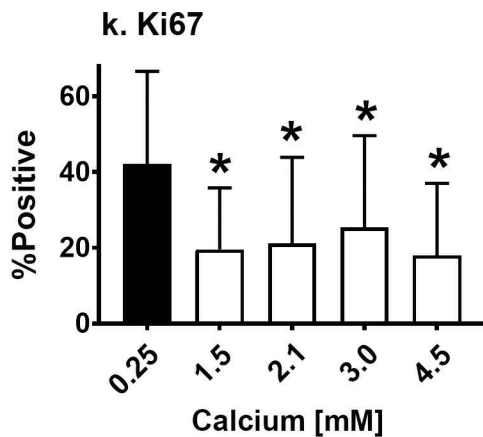
Non-POU domain-containing octamer-binding protein	0.014	0.743±0.081	0.699±0.051	0.668±0.086	0.586±0.131
Heterogeneous nuclear ribonucleoprotein H	0.014	0.848±0.032	0.760±0.051	0.733±0.046	0.686±0.078
Inositol 1,4,5-trisphosphate receptor type 3	0.014	1.244±0.055	1.359±0.124	1.442±0.121	1.450±0.130
Stress-induced-phosphoprotein 1	0.014	0.878±0.024	0.791±0.048	0.780±0.060	0.773±0.071
Monofunctional C1-tetrahydrofolate synthase, mitochondrial	0.014	0.839±0.037	0.791±0.058	0.730±0.049	0.594±0.093
Gelsolin	0.015	1.218±0.065	1.231±0.072	1.360±0.088	1.478±0.175
Proliferation marker protein Ki-67	0.015	0.576±0.084	0.482±0.113	0.391±0.130	0.314±0.083
ATP-binding cassette sub-family D member 3	0.015	1.176±0.046	1.306±0.138	1.357±0.095	1.307±0.076
Histone H1.5	0.015	0.732±0.071	0.663±0.059	0.639±0.081	0.577±0.104
Protein FAM50A	0.016	0.820±0.051	0.814±0.046	0.764±0.045	0.736±0.052
Secretory carrier-associated membrane protein 3	0.016	0.894±0.022	0.873±0.033	0.810±0.061	0.762±0.063
DNA repair protein XRCC1	0.016	0.730±0.079	0.691±0.056	0.618±0.112	0.564±0.135
Host cell factor 1	0.016	0.769±0.071	0.766±0.067	0.696±0.057	0.662±0.105
Procollagen lysine hydroxylase and glycosyltransferase LH3	0.016	1.147±0.047	1.193±0.047	1.294±0.097	1.334±0.111
Cytosolic 10-formyltetrahydrofolate dehydrogenase	0.016	1.143±0.054	1.210±0.051	1.318±0.088	1.376±0.127
Sterol 26-hydroxylase, mitochondrial	0.017	1.791±0.351	2.018±0.308	2.156±0.416	2.233±0.574
Chloride anion exchanger	0.017	1.773±0.291	1.911±0.426	1.889±0.284	2.098±0.385
Hephaestin	0.018	1.501±0.173	1.647±0.280	1.830±0.261	1.833±0.264
Nascent polypeptide-associated complex subunit alpha	0.018	0.792±0.051	0.736±0.073	0.644±0.066	0.601±0.099
Peptidyl-prolyl cis-trans isomerase G	0.018	0.800±0.062	0.775±0.078	0.780±0.060	0.684±0.064
Splicing factor, proline- and glutamine-rich	0.018	0.833±0.057	0.808±0.053	0.746±0.052	0.677±0.076
Major vault protein	0.019	1.205±0.087	1.283±0.093	1.319±0.086	1.393±0.169
40S ribosomal protein S12	0.019	0.748±0.054	0.621±0.091	0.578±0.104	0.574±0.118
Cell cycle and apoptosis regulator protein 2	0.019	0.855±0.036	0.846±0.046	0.788±0.047	0.760±0.053
Eukaryotic translation initiation factor 2 subunit 1	0.020	0.879±0.039	0.853±0.034	0.835±0.039	0.788±0.050
Histone H1.2	0.020	0.722±0.087	0.662±0.074	0.661±0.067	0.591±0.105
SUMO-conjugating enzyme UBC9	0.020	0.797±0.066	0.742±0.057	0.712±0.060	0.687±0.092
Deoxyuridine 5'-triphosphate nucleotidohydrolase, mitochondrial	0.020	0.762±0.058	0.600±0.097	0.537±0.081	0.458±0.146
DNA mismatch repair protein Msh2	0.021	0.742±0.085	0.709±0.092	0.615±0.073	0.550±0.112
Splicing factor 3B subunit 5	0.021	0.822±0.041	0.752±0.070	0.686±0.084	0.695±0.066
Polypeptide N-acetylgalactosaminyltransferase 12	0.022	1.196±0.060	1.266±0.089	1.297±0.089	1.287±0.112
Ras GTPase-activating protein-binding protein 1	0.022	0.749±0.074	0.611±0.101	0.554±0.085	0.471±0.098
U2 small nuclear ribonucleoprotein A'	0.023	0.808±0.057	0.758±0.075	0.750±0.075	0.654±0.072
StAR-related lipid transfer protein 5	0.023	1.204±0.065	1.221±0.091	1.297±0.089	1.221±0.094
40S ribosomal protein S19	0.023	0.770±0.066	0.721±0.064	0.647±0.077	0.617±0.095
Glycogen phosphorylase, brain form	0.023	1.271±0.081	1.412±0.182	1.577±0.225	1.667±0.270
Lysosome membrane protein 2	0.024	1.261±0.084	1.295±0.123	1.366±0.149	1.384±0.120

Dehydrogenase/reductase SDR family member 7	0.024	1.407±0.176	1.569±0.184	1.683±0.225	1.838±0.316
Peptidyl-prolyl cis-trans isomerase FKBP3	0.024	0.804±0.053	0.751±0.073	0.713±0.068	0.687±0.099
Peptidyl-prolyl cis-trans isomerase FKBP4	0.024	0.860±0.036	0.827±0.054	0.766±0.067	0.747±0.067
ATP-dependent 6-phosphofructokinase, liver type	0.024	1.143±0.044	1.193±0.082	1.278±0.110	1.276±0.083
Calcium-binding mitochondrial carrier protein Aralar2	0.026	1.152±0.058	1.288±0.093	1.320±0.110	1.380±0.133
Chromatin complexes subunit BAP18	0.026	0.856±0.044	0.752±0.069	0.723±0.066	0.708±0.076
Serine/threonine-protein kinase VRK1	0.027	0.700±0.071	0.610±0.109	0.524±0.105	0.405±0.117
Long-chain-fatty-acid--CoA ligase 5	0.028	1.369±0.155	1.451±0.165	1.582±0.202	1.649±0.297
Zinc transporter ZIP4	0.028	2.012±0.545	2.077±0.457	2.628±0.769	2.833±0.958
Serrate RNA effector molecule homolog	0.028	0.814±0.063	0.776±0.064	0.744±0.064	0.692±0.091
Amine oxidase [flavin-containing] A	0.028	1.344±0.135	1.457±0.156	1.475±0.174	1.580±0.262
Splicing factor 3B subunit 3	0.028	0.833±0.049	0.806±0.061	0.752±0.065	0.696±0.098
Paraspeckle component 1	0.028	0.853±0.048	0.811±0.063	0.785±0.058	0.720±0.088
Heterogeneous nuclear ribonucleoprotein U	0.031	0.744±0.069	0.643±0.087	0.618±0.090	0.547±0.121
Chloride intracellular channel protein 3	0.035	1.373±0.143	1.328±0.135	1.504±0.199	1.500±0.240
Mitochondrial proton/calcium exchanger protein	0.037	1.140±0.050	1.173±0.069	1.211±0.085	1.251±0.097

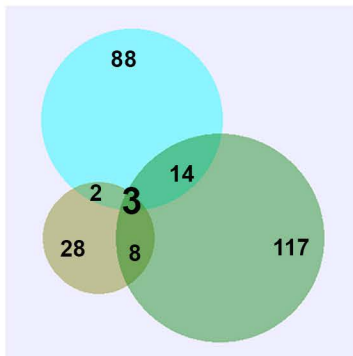
These values represent average fold change (of abundance ratio) compared with control conditions (0.15 mM calcium) ± SDs. These proteins were up- or down-regulated and were significant ($p < 0.05$) across the three colonoids and all culture conditions based on p value (< 0.05) calculated by nested-designed experiments. *Represents significance in up- or down-regulation as compared to the control at $p < 0.05$ level.



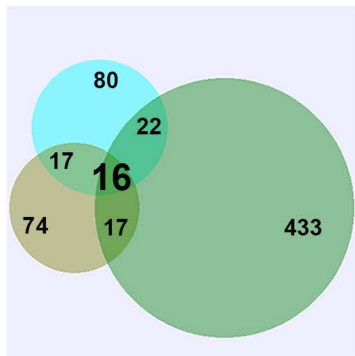
Quantitative IHC



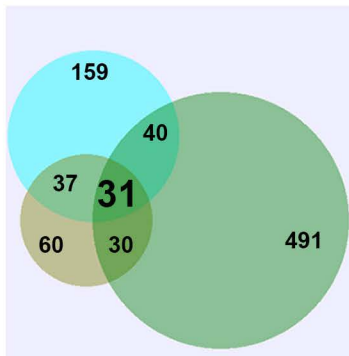
Aquamin (1.5mM)



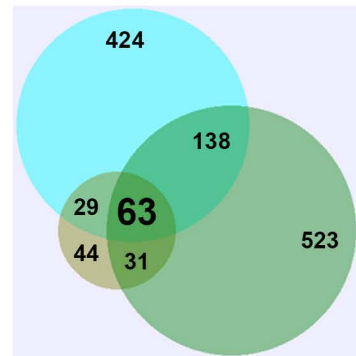
Aquamin (2.1mM)



Aquamin (3.0mM)



Aquamin (4.5mM)

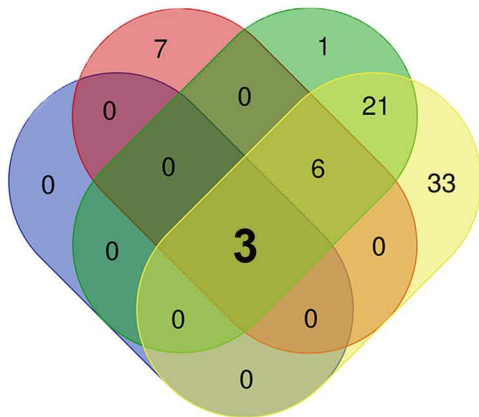


Subject# 125 127 128

2.1mM 3.0mM

1.5mM

4.5mM



Three common proteins:

**DSG2
CDH17
LYPD8**