

## Contents

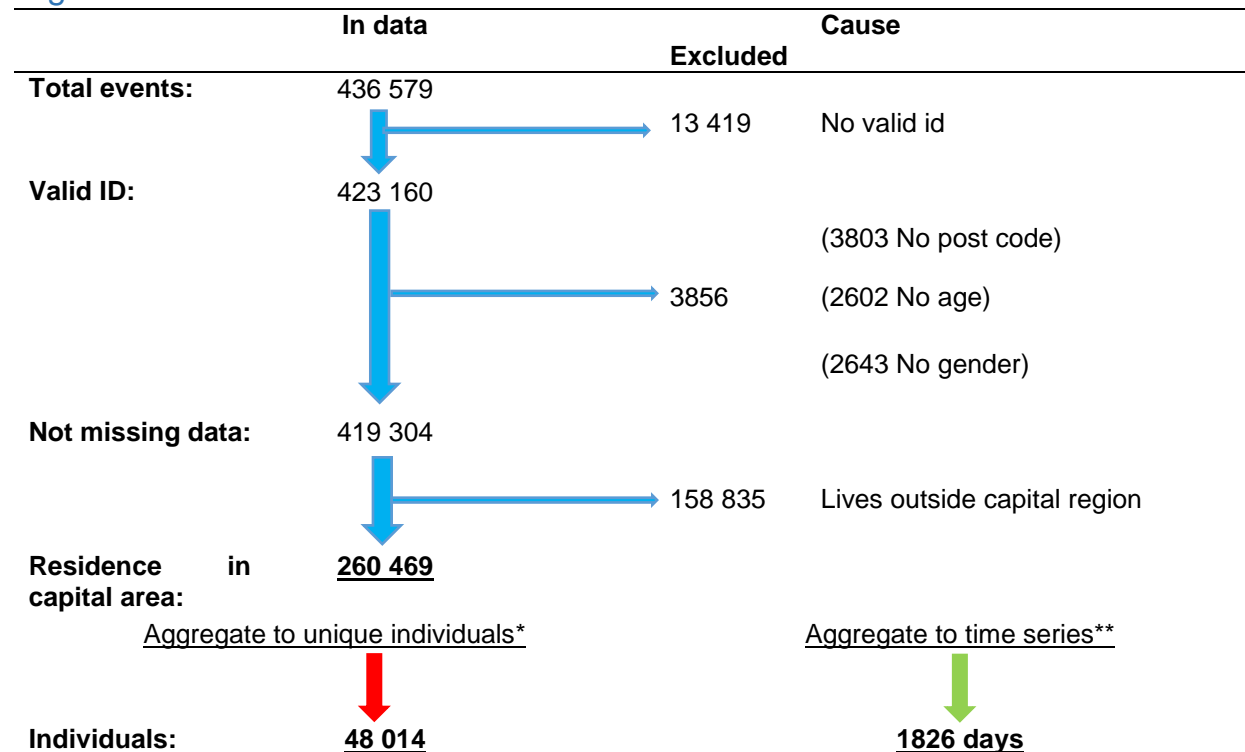
Data selection flow diagrams .....	2
Flow diagram 1: Anti-asthma medication data .....	2
Flow diagram 2: Primary care center (PCC data) for respiratory diagnoses .....	3
Flow diagram 3: Hospital emergency department visits data for selected diagnoses .....	4
Supplementary figures .....	5
Figure S1 Days with high SO <sub>2</sub> (>125 ug/m <sup>3</sup> ) and associations with respiratory health outcomes across lags 0-10 (plotted using DLNM) .....	5
Figure S2 Concentration-response for SO <sub>2</sub> and health outcomes (plotted using DLNM) .....	6
Figure S3 Associations between high SO <sub>2</sub> days (>125 ug/m <sup>3</sup> ) and subcategories of PCMD and HED (plotted using DLNM) .....	7
Figure S4 Lag-associations to lag 20 (plotted using DLNM) .....	8
Figure S5 Time series of daily mean of air pollutants 2010-2014 .....	9
Supplementary tables .....	10
Table S1 Percent increased risk in respiratory health outcomes associated with daily SO <sub>2</sub> exposure at lag 0-2, not adjusting for other pollutants (corresponding to Table 3) .....	10
Table S2 Sensitivity analyses: Outcome variable definitions .....	11
Table S3 Sensitivity analyses: Exposure definitions and subsets .....	12
Table S4a Correlation matrix .....	14
Table S4b Period after eruption began 31 August 2014-31 December 2014 .....	14

## Data selection flow diagrams

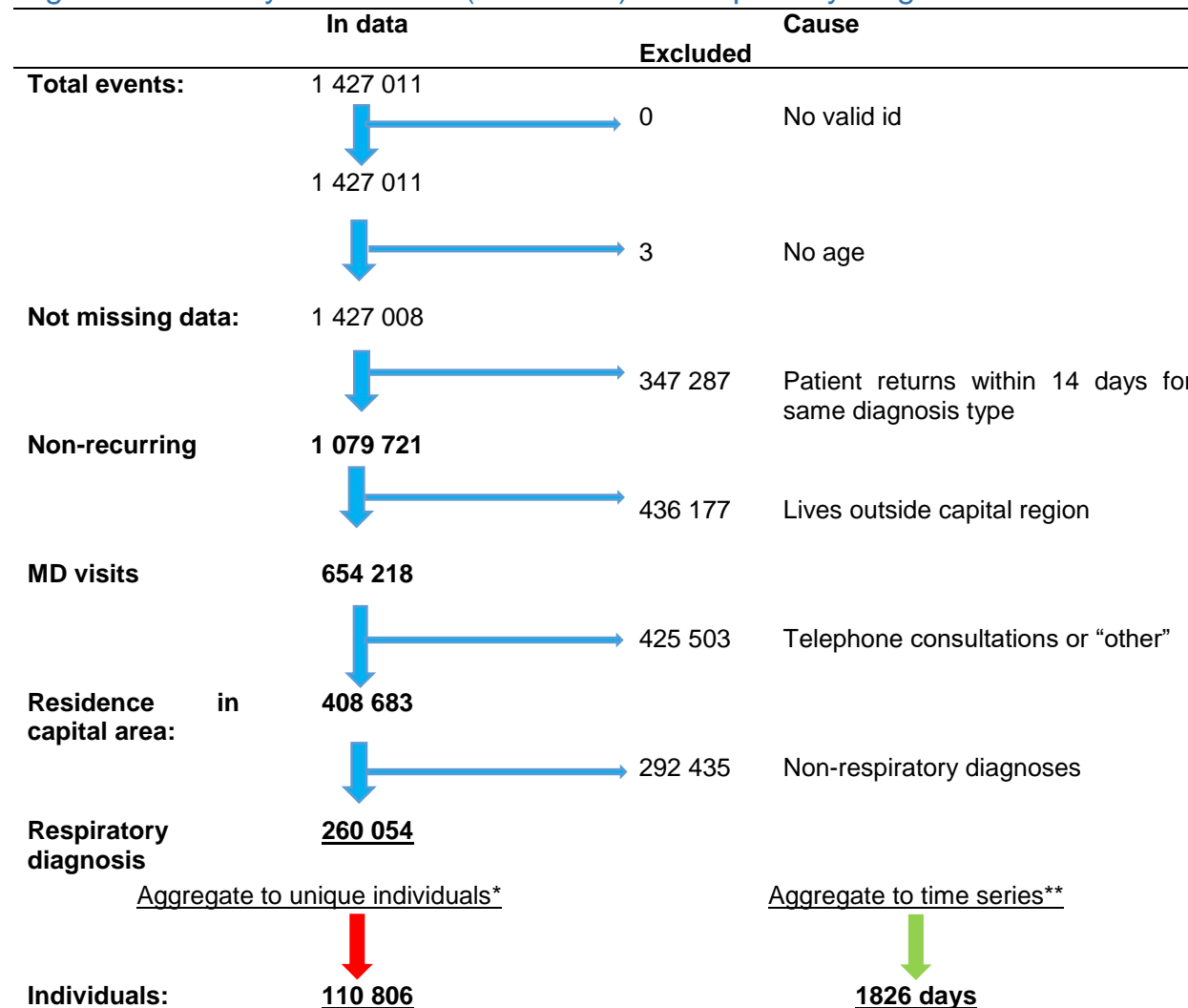
Flow diagrams of data selection of register data extracted for the study period 2010-01-01 to 2014-12-31.

First the data was selected based on the data set of events (instances, diagnoses, or, in data terms, lines), then the number of unique individuals in the data were identified\* for extracting demographic information for the description of the study population characteristics found in Table 1. The time series used in Table 2 and further analysis was aggregated from the events based data.\*\*

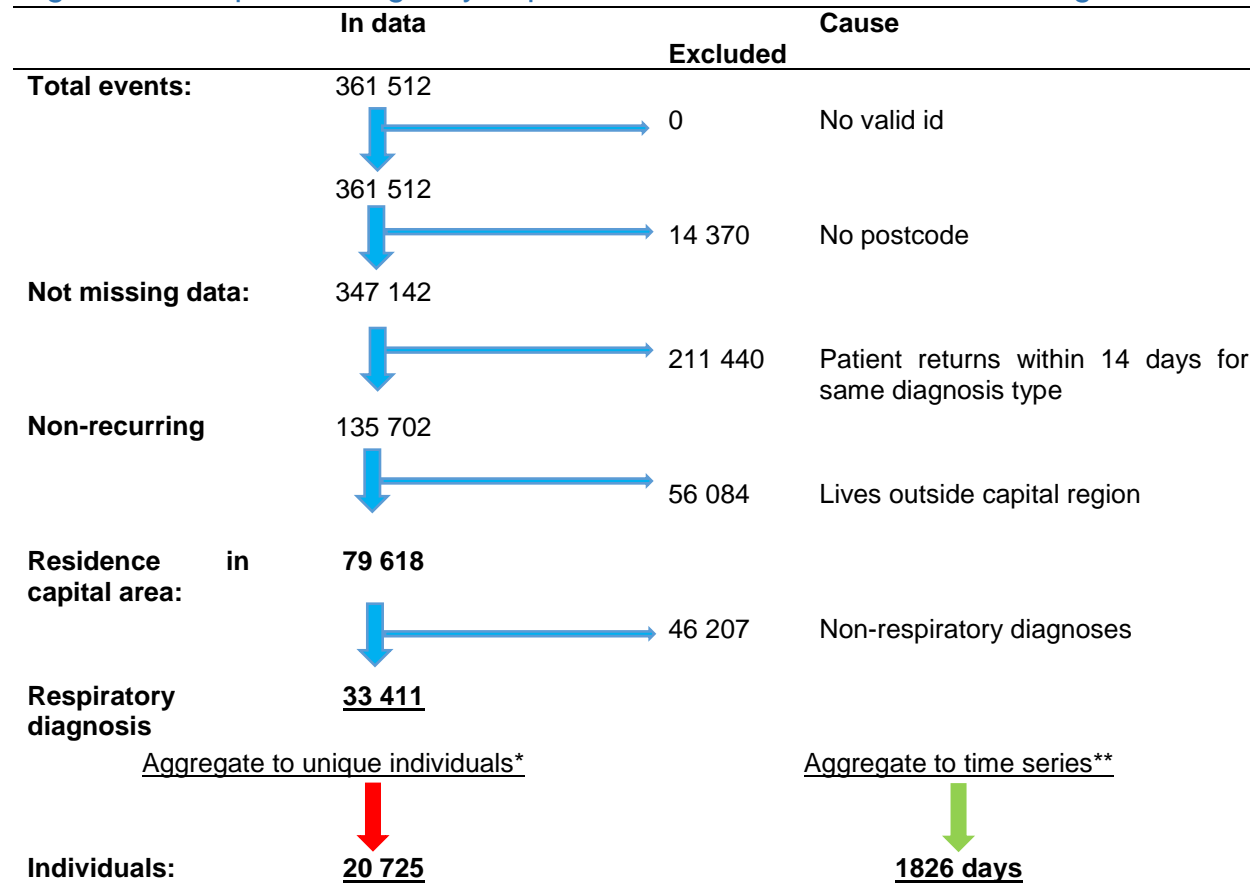
### Flow diagram 1: Anti-asthma medication data



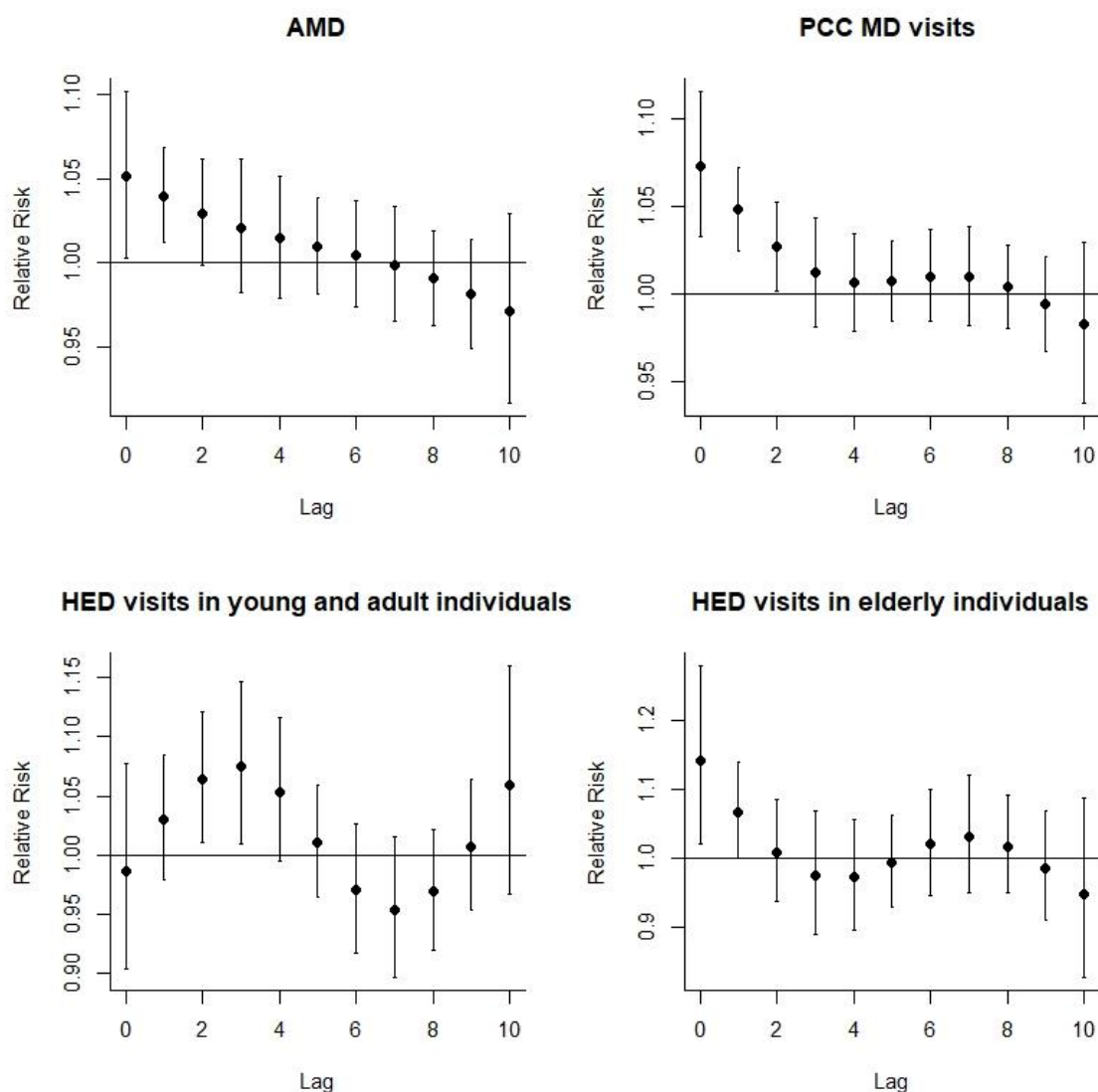
Flow diagram 2: Primary care center (PCC data) for respiratory diagnoses



Flow diagram 3: Hospital emergency department visits data for selected diagnoses

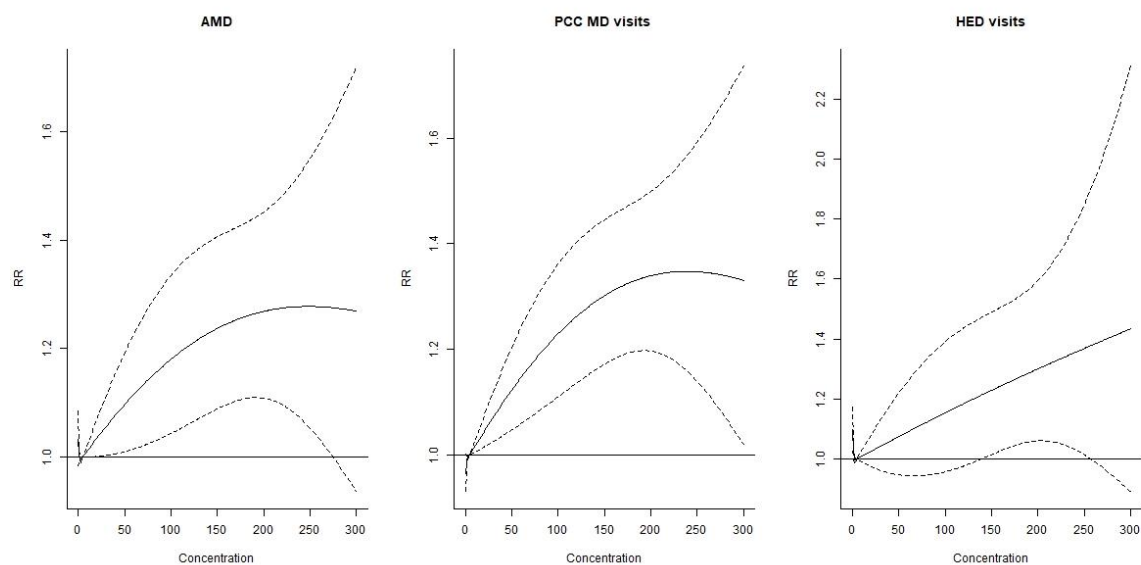


## Supplementary figures

Figure S1 Days with high SO<sub>2</sub> (>125 µg/m<sup>3</sup>) and associations with respiratory health outcomes across lags 0-10 (plotted using DLNM<sup>1</sup>)

<sup>1</sup> Crossbasis defined to predict for values of SO<sub>2</sub> from 0 to 125 µg/m<sup>3</sup> with a natural spline with four degrees of freedom for the lag-structure up to lag 10. Models were adjusted for time trends as the main models, but not adjusted for other pollutants. Crosspred function was centered at 5 and predicting to 125 µg/m<sup>3</sup>.

Figure S2 Concentration-response for SO<sub>2</sub> and health outcomes (plotted using DLNM<sup>2</sup>)



Crossbasis for variable values and lags have four degrees of freedom each.

<sup>2</sup> Crossbasis for variable values have four degrees of freedom, lags 0- lag 2 for AMD and PCC, lag 0- lag 4 for HED. Model is adjusted for time trend as the main model, but not other pollutants. The prediction is centered at 5 and set to predict to 300.

Figure S3 Associations between high SO<sub>2</sub> days (>125 ug/m<sup>3</sup>) and subcategories of PCMD and HED (plotted using DLNM)

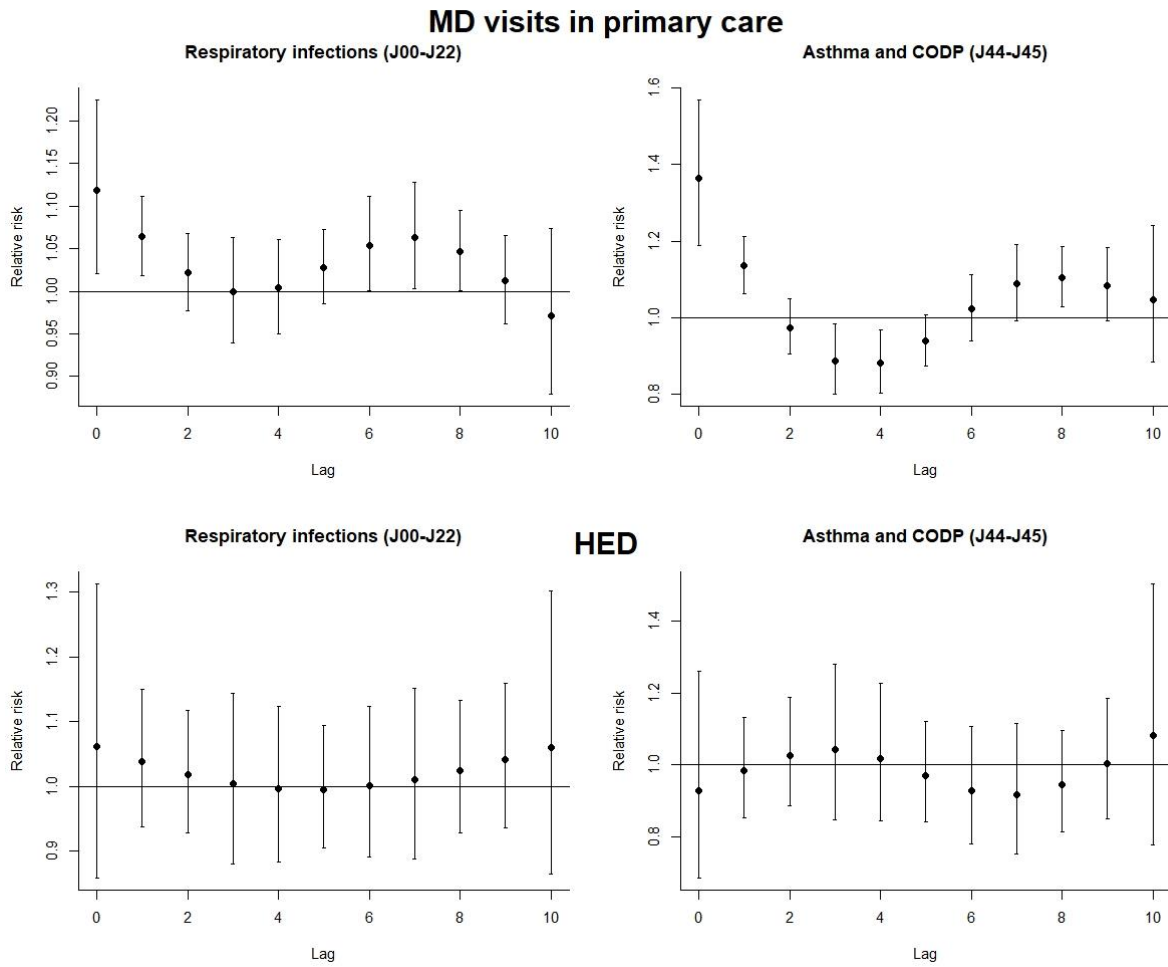
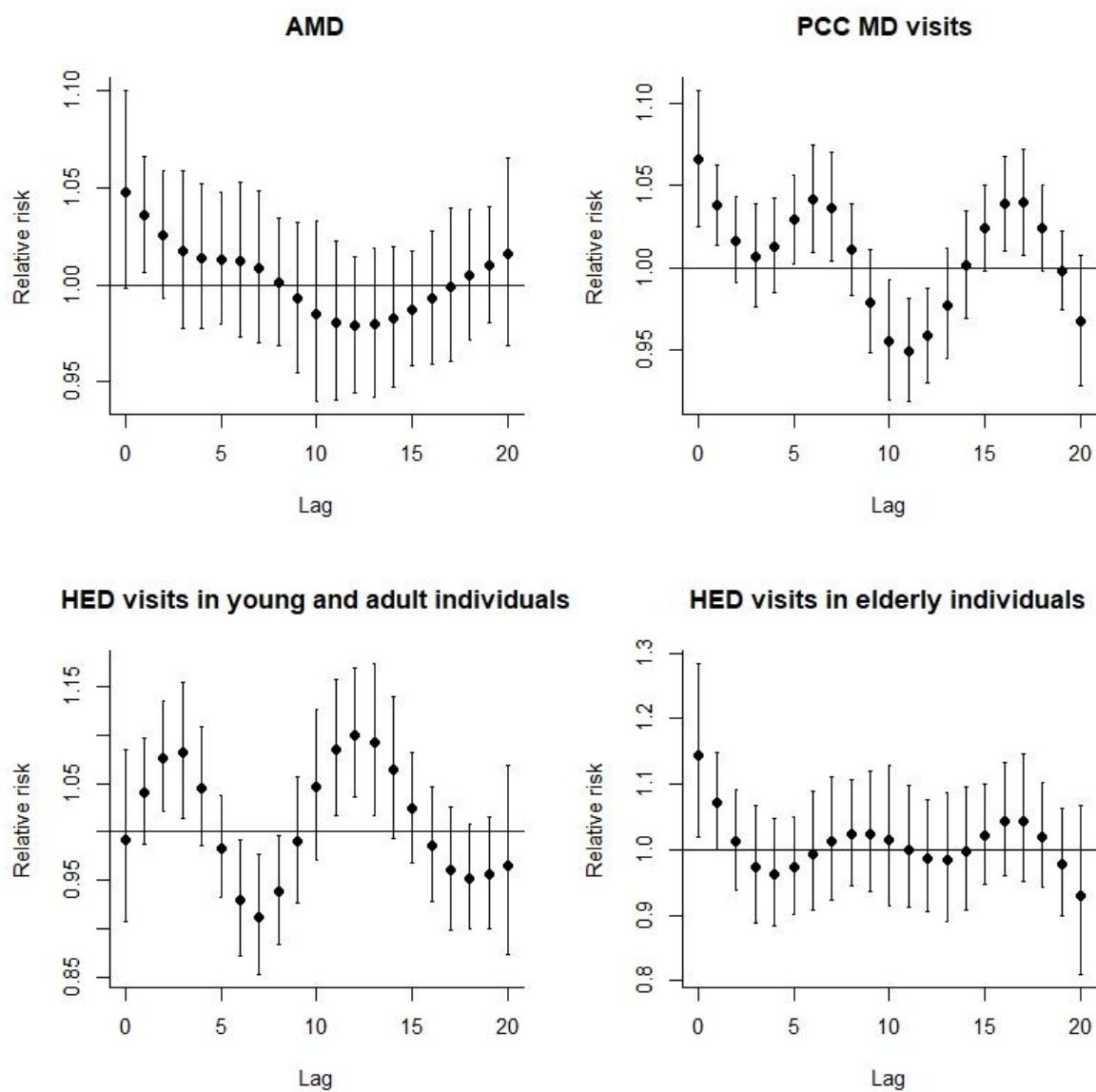
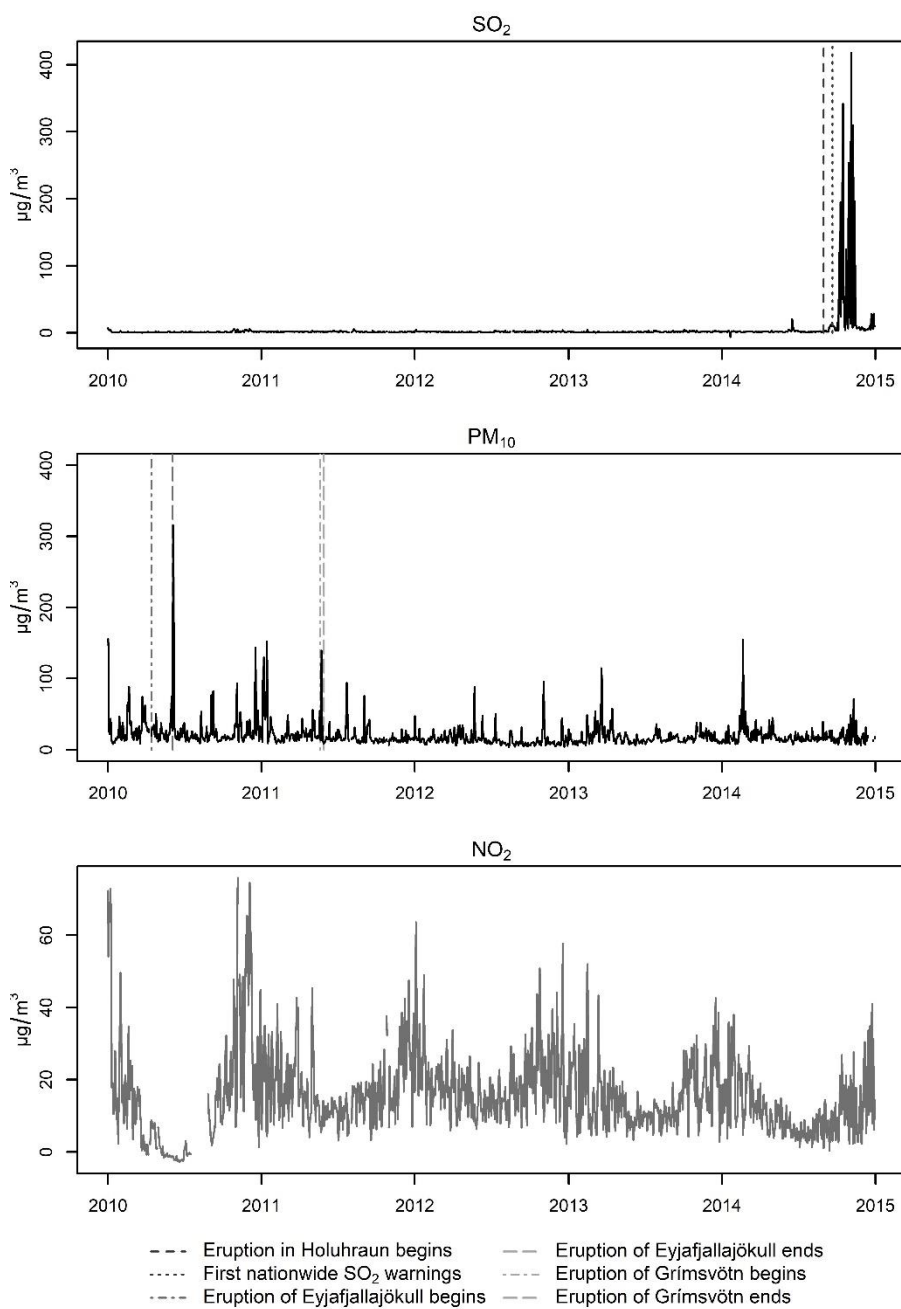


Figure S4 Lag-associations to lag 20 (plotted using DLNM<sup>3</sup>)

<sup>3</sup> Crossbasis with a threshold predicting from 0 to 125, lag-structure with natural spline and 7 degrees of freedom. Crosspred predicts from 5 to 125.



Figure S5 Time series of daily mean of air pollutants 2010-2014.



## Supplementary tables

Table S1 Percent increased risk in respiratory health outcomes associated with daily SO<sub>2</sub> exposure at lag 0-2, not adjusting for other pollutants (corresponding to Table 3)

	SO <sub>2</sub> (per 10 µg/m <sup>3</sup> )		SO <sub>2</sub> levels >125 µg/m <sup>3</sup>	
	%	95% CI	%	95% CI
<b>Anti-asthma medication (AMD)</b>				
All	1.10%	0.53 - 1.67%	13.4%	4.7 – 22.8%
Children 0-17	1.68%	0.84 - 2.52%	23.1%	9.5 – 38.4%
Adults 18-65	1.07%	0.42 – 1.71%	13.2%	3.4 – 24.1%
Elderly >65	0.87%	0.16 – 1.60%	9.1%	-1.6 – 21.0%
<b>Primary care MD visits (PCMD)</b>				
All	1.49%	1.00 – 1,89%	20.8%	12.9 – 29.3%
Children 0-17	1.27%	0.49 – 2.05%	15.1%	3.6 – 27.9%
Adults 18-65	1.50%	0.98 – 2.02%	23.2%	14.8 – 32.3%
Elderly >65	1.39%	0.48 – 2.31%	15.7%	1.8 – 31.4%
<b>Hospital Emergency Department (HED)</b>				
All	0.84%	-0.08 – 1.76%	12.0%	-1.0 – 26.8%
Children 0-17	0.89%	-0.73 – 2.55%	8.9%	-13.0 – 36.2%
Adults 18-65	0.61%	-0.80 – 2.04%	10.4%	-8.8 – 33.8%
Elderly >65	1.70%	0.26 – 3.16%	25.8%	3.5 – 52.9%

Models are adjusted for season, time, day of week, odd holidays, the outcome at lag1, and MD strike for PCC and HED. n=1788.

### Table S2 Sensitivity analyses: Outcome variable definitions

Association between SO<sub>2</sub> as both continuous variables and as indicator of days with high levels (SO<sub>2</sub>>125 ug/m<sup>3</sup>) and changes in anti-asthma medication dispensing, respiratory primary care center contacts and hospital emergency visits and admissions due to respiratory illness.

	SO <sub>2</sub> (per 10 µg/m <sup>3</sup> )		SO <sub>2</sub> levels >125 ug/m <sup>3</sup>	
	%	95% CI	%	95% CI
<u>Primary care – All contacts (lag 0-2)</u>				
All	1.50%	1.04 – 1.96%	24.8%	16.8 – 33.3%
Children 0-17	1.31%	0.55 – 2.06%	17.5%	5.7 – 30.7%
Adults 18-65	1.48%	0.99 – 1.96%	26.8%	18.3 – 35.9%
Elderly >65	1.44%	0.69 – 2.19%	21.5%	9.0 – 35.4%
<u>Primary care - including recurring contacts (lag 0-2)</u>				
All	1.49%	1.05 – 1.94%	25.3%	17.5 – 33.6%
Children 0-17	1.34%	0.60 – 2.09%	17.3%	5.6 – 30.6%
Adults 18-65	1.48%	1.00 – 1.95%	27.3%	18.9 – 36.2%
Elderly >65	1.56%	0.84 – 2.28%	25.1%	12.7 – 38.9%
<u>Admissions from Hospital emergency department (lag 0-2)</u>				
All	0.73%	-0.76 – 2.23%	15.3%	-10.4 – 48.3%
Children 0-17*	3.92%	-0.47- 8.32%	111.2%	-12.0 – 407.0%
Adults 18-65	0.64%	-1.98 – 3.26%	2.2%	-37.3 – 66.6%
Elderly >65	0.49%	-1.34 – 2.33%	15.1%	-15.8 – 57.2%
<u>Admissions from Hospital emergency department (lag 2-4)</u>				
All	1.65%	-0.11 – 3.42%	18.5%	-7.5 – 52.0%
Children 0-17*	6.00%	1.29 – 10.7%	175.2%	20.9 – 526.2%
Adults 18-65	2.03%	-0.86 – 4.92%	20.9%	-22.9 – 89.6%
Elderly >65	0.83%	-1.39 – 3.05%	7.8%	-21.3 – 47.8%

Models are adjusted for season, time, day of week, odd holidays, temperature, relative humidity, and the outcome at lag1, NO<sub>2</sub>, PM<sub>10</sub> at the same lags. n=1705 for all.

**Table S3 Sensitivity analyses: Exposure definitions and subsets**

Association between SO<sub>2</sub> as both continuous variables and as indicator of days with high levels (SO<sub>2</sub>>125 ug/m<sup>3</sup>) and changes in anti-asthma medication dispensing, respiratory PCMD and visits and hospital emergency visits and admissions

	SO <sub>2</sub> (per 10 µg/m <sup>3</sup> )		SO <sub>2</sub> levels >125 ug/m <sup>3</sup>	
	%	95% CI	%	95% CI
<b><u>Excluding the first day in series of consecutive high SO<sub>2</sub> exposure days</u></b>				
<u>Asthma medication (AMD, lag 0 – 2)</u>				
All	0.99%	-0.30 – 2.30%	14.8%	4.5 – 26.2%
Children 0 – 17	2.21%	0.30 – 4.16%	20.9%	5.2 – 39.0%
Adults 18 – 65	0.58%	-0.91 – 2.10%	13.7%	2.1 – 26.9%
Elderly >65	0.76%	-0.91 – 2.46%	13.5%	0.5 – 28.2%
<u>Primary care MD visits (PCMD, lag 0-2)</u>				
All	1.65%	0.59 – 2.71%	21.8%	12.7 – 31.7%
Children 0-17	2.16%	0.57 – 3.77%	15.9%	2.7 – 30.9%
Adults 18-65	1.26%	0.13 – 2.40%	23.5%	13.8 – 34.1%
Elderly >65	1.36%	-0.36 – 3.12%	23.1%	8.8 – 39.2%
<b><u>Excluding the first week of high SO<sub>2</sub> exposure</u></b>				
<u>Anti – asthma medication (AMD, lag 0 – 2)</u>				
All	1.04%	0.37 – 1.71%	11.5%	2.2 – 21.7%
Children 0 – 17	1.54%	0.52 – 2.57%	15.3%	1.1 – 31.5%
Adults 18 – 65	1.16%	0.40 – 1.93%	13.3%	2.6 – 25.2%
Elderly >65	1.16%	0.29 – 2.04%	7.9%	-3.7 – 20.8%
<u>Primary care MD visits (PCMD, lag 0-2)</u>				
All	1.57%	1.01 – 2.13%	21.2%	12.9 – 30.0%
Children 0 – 17	1.22%	0.31 – 2.14%	11.7%	-0.4 – 25.2%
Adults 18 – 65	1.55%	0.95 – 2.15%	23.0%	14.0 – 32.6%
Elderly >65	1.55%	0.65 – 2.46%	24.0%	10.8 – 38.9%
<b><u>Lag 2-4 of Hospital emergency department</u></b>				
All	1.14%	0.18 -2.10%	11.7%	-1.8 – 25.9%
Children 0-17	2.09%	0.51 – 3.70%	22.6%	-3.0 – 55.0%
Adults 18-65	1.11%	-0.39 – 2.63%	7.3%	-12.6 – 31.6%
Elderly >65	0.78%	-0.84 – 2.42%	11.8%	-10.0 – 38.8%
<b><u>Years 2012-14</u></b>				
<u>Anti – asthma medication (AMD, lag 0 – 2)</u>				
All	0.70%	0.02 – 1.38%	8.5%	-0.9 – 18.8%
Children 0 – 17	1.02%	0.06 – 1.99%	13.5%	0.1 – 28.7%
Adults 18 – 65	0.73%	-0.03 – 1.51%	9.8%	-1.0 – 21.6%
Elderly >65	0.63%	-0.24 – 1.51%	5.5%	-6.3 – 18.8%
<u>Primary care MD visits (PCMD, lag 0-2)</u>				
All	1.39%	0.85 – 1.92%	20.8%	12.5 – 29.5%
Children 0 – 17	0.96%	0.13 – 1.79%	10.7%	-0.9 – 23.7%
Adults 18 – 65	1.55%	0.98 – 2.13%	26.5%	17.1 – 36.6%
Elderly >65	1.26%	0.27 – 2.26%	14.5%	-0.5 – 31.7%
<u>Hospital emergency department (HED, (lag 0-2)</u>				
All	0.81%	-0.13 – 1.76%	6.7%	-5.9 – 20.9%
Children 0-17	0.80%	-1.03 – 2.66%	-0.3%	-22.0 – 27.5%
Adults 18-65	-0.11%	-1.52 – 1.32%	3.9%	-13.8 – 25.4%
Elderly >65	1.66%	0.14 – 3.20%	13.8%	-7.7 – 40.3%

Models are adjusted for season, time, day of week, and odd holidays, and the outcome at lag1, NO<sub>2</sub>, PM<sub>10</sub>, temperature, and relative humidity at the same lags as SO<sub>2</sub>. \* n=1705 for the whole dataset analyses, and 1054 for the analysis of the years 2012-14.

**Table S4a Correlation matrix**

Period before eruption 1 Jan 2010-august 31 2014

N=1632	SO <sub>2</sub>	PM <sub>10</sub>	NO <sub>2</sub>	Temperature	Relative humidity
SO <sub>2</sub>	1				
PM <sub>10</sub>	-0.006	1			
NO <sub>2</sub>	0.429*	0.002	1		
Temperature	-0.069*	-0.143	-0.528*	1	
Relative humidity	0.0130	0.073*	-0.113*	-0.076*	1

**Table S4b Period after eruption began 31 August 2014-31 December 2014**

N=109	SO <sub>2</sub>	PM <sub>10</sub>	NO <sub>2</sub>	Temperature	Relative humidity
SO <sub>2</sub>	1				
PM <sub>10</sub>	0.403*	1			
NO <sub>2</sub>	0.075	0.400*	1		
Temperature	-0.036	-0.129	-0.620*	1	
Relative humidity	-0.556*	-0.352*	-0.050	0.081	1