

Supplementary Materials

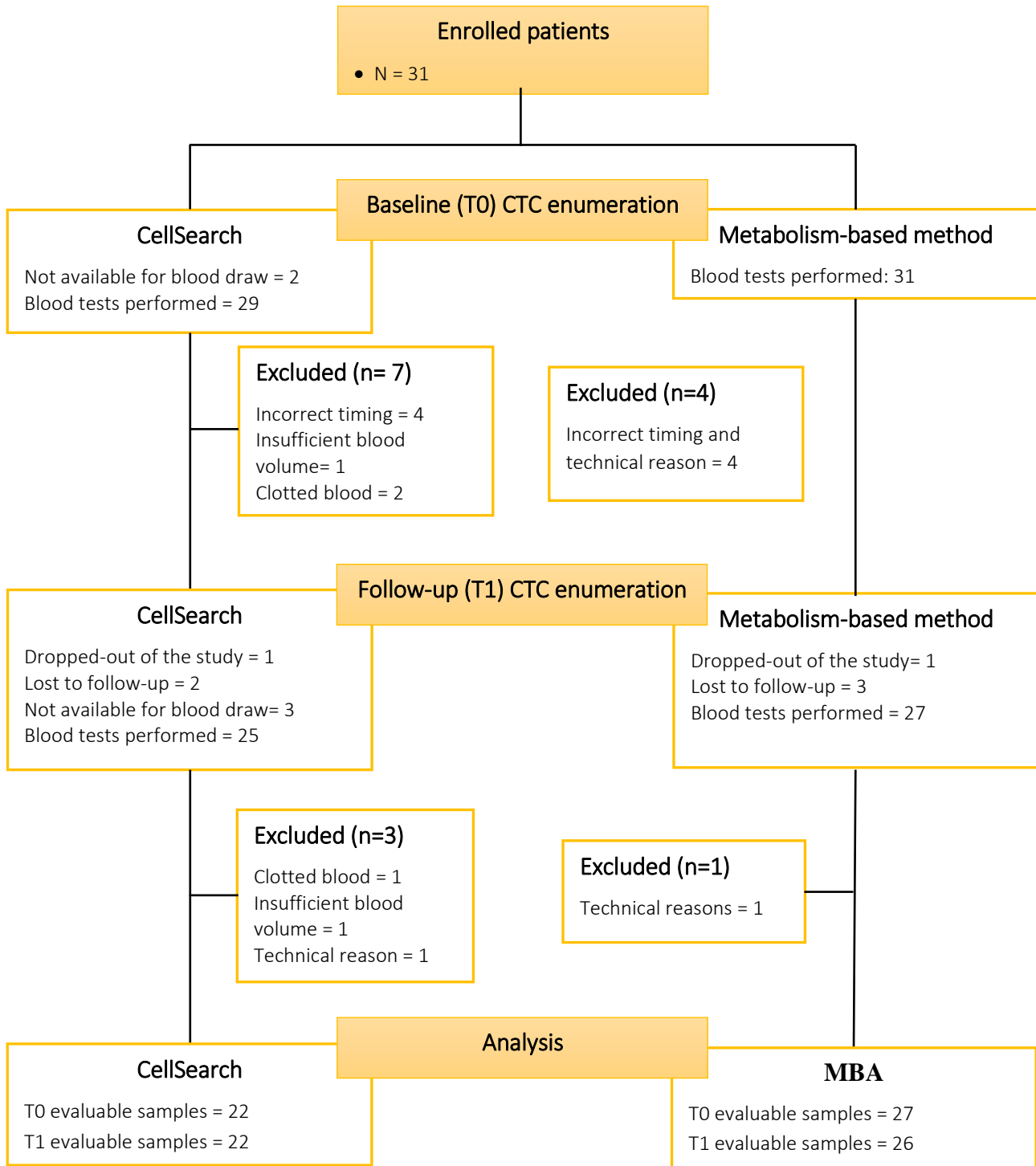


Fig. S1. CONSORT diagram describing the study design, enrolment of patients and motivations of data exclusion.

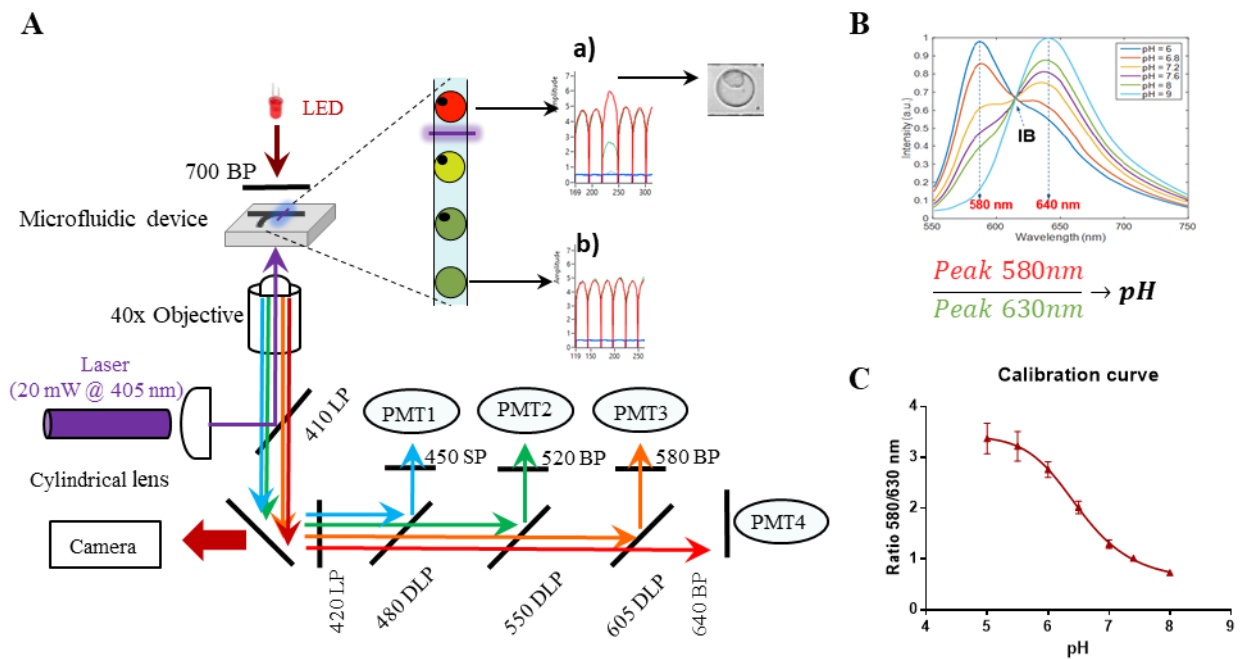


Fig. S2. Principle of the metabolic-based assay (MBA) CTC detection. (A) Schematic overview of the optical set-up: laser light (405 nm) is shaped into a laser line through cylindrical lens and transmitted through a dichroic mirror to a 40x objective. Fluorescence light emitted from droplets was captured by the same objective, split with dichroic filters, and wavelength of interest selected by bandpass filters and measured by photomultiplier tubes (PMT) (solid line represents dichroic filters; DLP = dichroic long pass; SP = short pass). Insertions: a) representative image of an in-drop cell with the corresponding fluorescence spectrum from which a decrease of fluorescent intensity at 630nm (green line) and an increase in 580nm (red line) can be observed, as expected, from an acidic droplet; b) empty droplet showing no change in the pH, i.e. in the ratio of SNARF-5F fluorescent intensity at 580 and 630nm; **(B)** Fluorescence emission spectra of SNARF-5F showing the spectral pH-dependent shift at 580nm and 630nm. IB = Isosbestic point. As pH is lowered, SNARF-5F undergoes a wavelength shift in the emission spectrum, allowing determination of the exact pH of the droplet by measuring the fluorescence peaks at two wavelengths (ratio 580/630 nm). **(C)** Calibration curve of SNARF-5F. Ratio of 580 and 630 nm fluoresce intensity of SNARF-5F was plotted for each respective pH and a sigmoidal fit was performed to obtain the represented calibration curve.

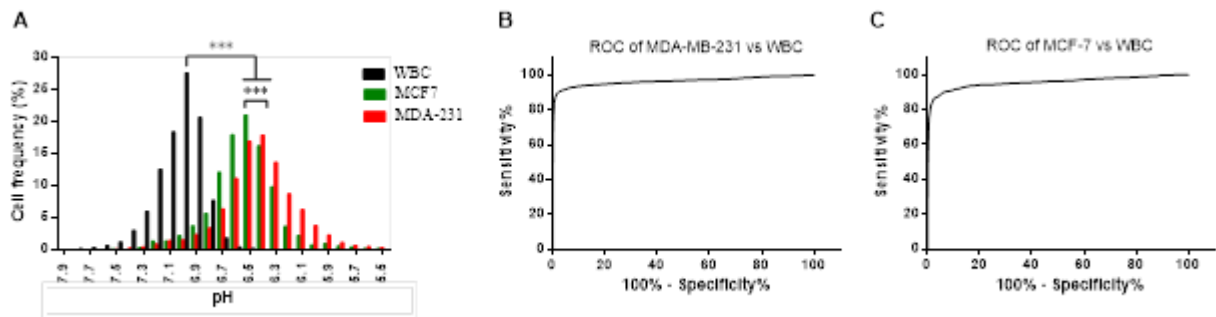


Fig. S3. Measurement of ECAR by the metabolism-based assay (MBA). (A) Representative histogram reporting the acidification of cell-containing droplets for both breast cancer cell lines (MDA-MB-231 and MCF7) and WBCs obtained from healthy donor's sample. Both cancer cell lines had a significantly higher ECAR with respect to that detected in WBC and MDA-MB-231 reached a higher level with respect to MCF7. Statistical significance was calculated comparing cell lines and WBC by Mann-Whitney test (***) p -value < 0.0001 . (B) and (C) ROC curves obtained comparing the ECAR of MDA-MB-231 and MCF7 breast cancer cell lines against WBC. The area under the curve was 0.96 and 0.95 in discriminating MDA-MB-231 and MCF7 from WBCs, respectively. The proportion of cells leading to a droplet acidification below pH 6.4 was 45% and 22% in the case of MDA-MB-231 and MCF7, respectively.

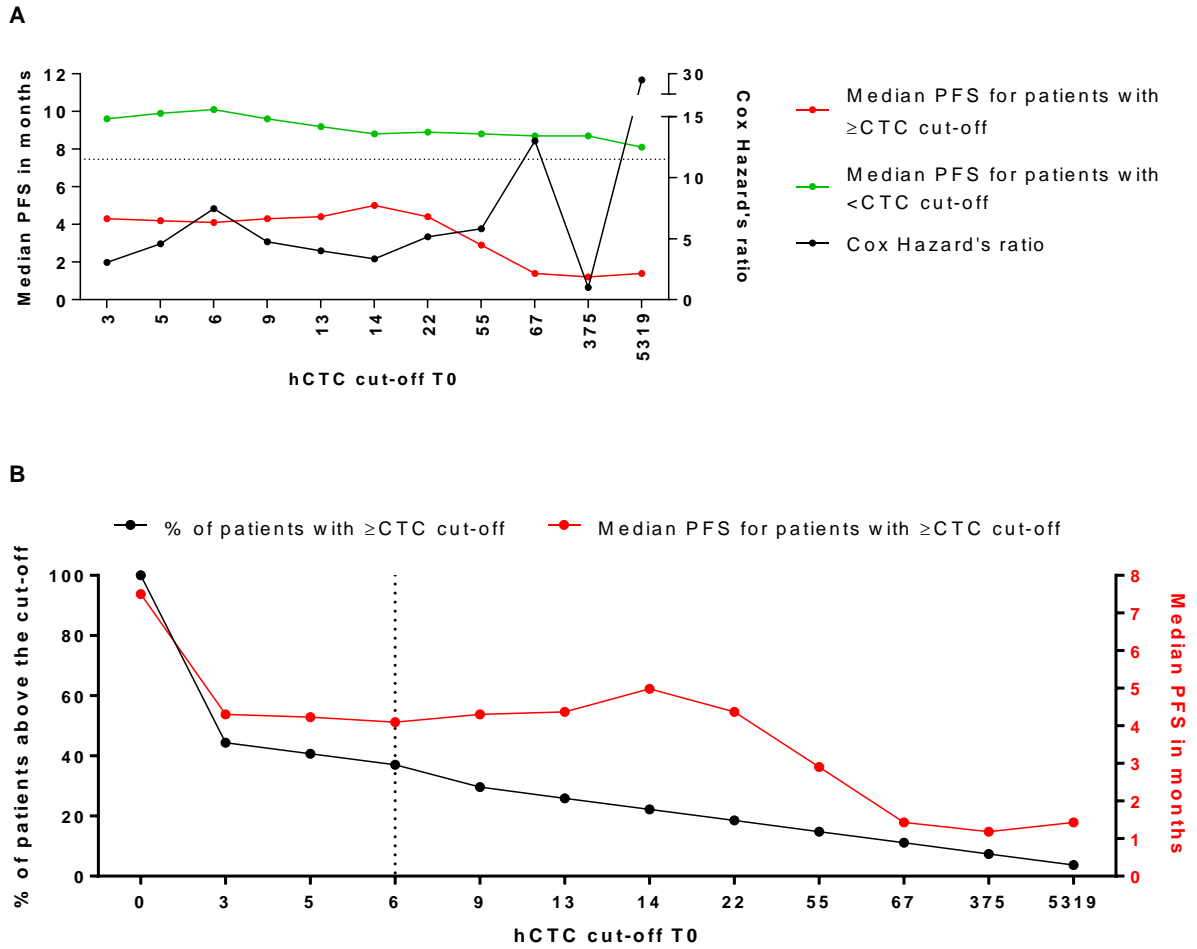


Fig. S4. Determination of the prognostic CTC cut-off for the metabolic-based assay (MBA). (A) The median PFS for patients positive (red line) or negative (green line) and the Cox hazard ratio (black line) were plotted against each selected cut-off. (B) The graph reports the median PFS of positive patients and the percentage (black line) of positive patients for each selected cut-off. The dotted line represents the selected prognostic cut-off for MBA analysis.

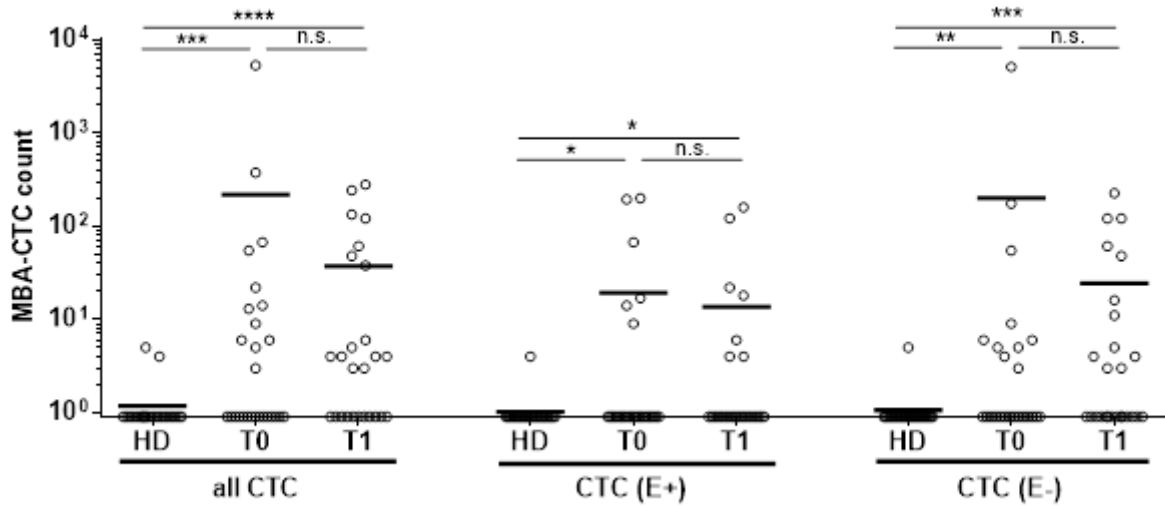


Fig. S5 CTC count of healthy donors (HD) and mBC patients at baseline (T0) and follow-up (T1) performed with the metabolic-based assay (MBA). Overall, 26 healthy donors (HD), 27 patients at T0 and 26 at T1 were included for CTC enumeration. The graph reports the total CTC count (Acid-positive, i.e.: pH<6.4, droplets containing CD45-negative and both EpCAM-positive and -negative cells) and the prevalence of the subpopulation of EpCAM-positive (E+) and EpCAM-negative (E-) CTCs. Horizontal bars represent the average CTC count. Statistical significance was evaluated by Mann-Whitney test (* p-value ≤ 0.05 ; *** p-value ≤ 0.001 ; **** p-value ≤ 0.0001).

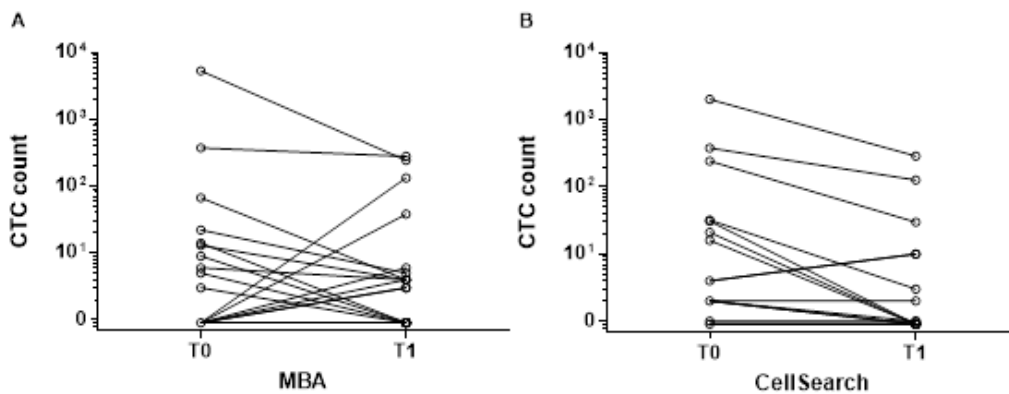


Fig. S6. The changes of CTC count before and after therapy. (A) Trend of CTC number for each patient before (T0) and after therapy (T1) as assessed with the metabolic-based assay (MBA) or (B) the CellSearch.

Table S1. Prevalence of CTCs: comparison between the metabolic-based assay (MBA) and the CellSearch (CS). The table reports patient data and the CTC count of each patient at baseline (T0) and follow-up (T1), along with the corresponding prevalence of EpCAM positive (E+) or negative (E-) CTCs, as detected by the MBA, and apoptotic (M30+) CTC, as identified with the CS test. (n.a. = not available data; see fig. S1 for details; CR=complete response; PR=partial response; PD=progressive disease).

ID	Histology	MBA						CS				
		T0			T1			T0		T1		
		CTC	CTC E+	CTC E-	CTC	CTC E+	CTC E-	CTC	CTC M30+	CTC	CTC M30+	
1	ER+/PR+/HER2-	n.a.	n.a.	n.a.	61	0	61	n.a.	n.a.	0	0	-
2	ER+/PR-/HER2-	n.a.	n.a.	n.a.	121	0	121	n.a.	n.a.	0	0	-
3	ER+/PR+/HER2-	n.a.	n.a.	n.a.	48	0	48	n.a.	n.a.	1	0	PR
4	ER-/PR-/HER2-	n.a.	n.a.	n.a.	n.a.	n.a.	n.a.	n.a.	n.a.	0	0	-
5	ER-/PR-/HER2-	0	0	0	0	0	0	0	0	0	0	CR
6	ER-/PR-/HER2-	375	200	175	280	160	120	379	25	127	7	PD
7	ER-/PR-/HER2-	5319	194	5125	243	18	225	2022	0	288	0	PD
8	ER-/PR-/HER2-	14	14	0	0	0	0	21	0	0	0	PR
9	ER-/PR-/HER2-	0	0	0	6	6	0	n.a.	n.a.	n.a.	n.a.	PR
10	ER-/PR-/HER2-	55	0	55	n.a.	n.a.	n.a.	0	0	n.a.	n.a.	PD
11	ER+/PR-/HER2-	13	9	4	4	4	0	244	0	30	1	PD
12	ER+/PR+/HER2-	6	0	6	n.a.	n.a.	n.a.	n.a.	n.a.	n.a.	n.a.	PD
13	ER+/PR-/HER2-	0	0	0	4	4	0	2	0	0	0	PR
14	ER+/PR+/HER2-	0	0	0	38	22	16	31	0	0	0	PD
15	ER-/PR-/HER2+	0	0	0	0	0	0	n.a.	n.a.	2	0	PR
16	ER+/PR+/HER2-	22	17	5	5	0	5	1	0	1	0	PD
17	ER+/PR-/HER2-	0	0	0	3	0	3	4	0	10	0	PR
18	ER-/PR-/HER2-	0	0	0	0	0	0	1	1	n.a.	n.a.	PR
19	ER+/PR+/HER2-	0	0	0	0	0	0	2	0	1	0	PR
20	ER+/PR+/HER2-	0	0	0	133	122	11	0	0	0	0	PR
21	ER-/PR-/HER2+	0	0	0	0	0	0	0	0	0	0	SD
22	ER+/PR-/HER2-	67	67	0	4	0	4	3	0	n.a.	n.a.	PD
23	ER+/PR+/HER2-	0	0	0	n.a.	n.a.	n.a.	67	0	n.a.	n.a.	PR
24	ER+/PR+/HER2-	0	0	0	3	0	3	2	0	0	0	PR
25	ER+/PR+/HER2-	0	0	0	0	0	0	32	0	3	0	PD
26	ER-/PR+/HER2-	3	0	3	0	0	0	n.a.	n.a.	n.a.	n.a.	-
27	ER+/PR+/HER2+	5	0	5	0	0	0	n.a.	n.a.	n.a.	n.a.	PR
28	ER+/PR+/HER2-	6	0	6	4	0	4	16	0	0	0	PD
29	ER+/PR-/HER2-	0	0	0	0	0	0	2	0	2	0	PR
30	ER+/PR+/HER2-	9	0	9	0	0	0	4	1	10	0	PD
31	ER+/PR+/HER2-	0	0	0	n.a.	n.a.	n.a.	0	0	n.a.	n.a.	PR
	N	27	27	27	26	26	26	22	22	22	22	
	Mean	218	84	539	37	48	52	129	9	22	0	
	SD	1022	90	1612	75	65	70	433	14	65	1	
	Median	0	42	6	4	18	14	3	1	1	0	
	Min	0	9	3	0	4	3	0	1	0	0	

Table S2. CTC count in 26 healthy donors as detected with the metabolic-based assay (MBA). (CTC = total CTC count; CTC E+ = CTC positive for EpCAM expression; CTC E- = CTC negative for EpCAM expression).

ID		MBA		
		CTC	CTC E+	CTC E-
1	HD	0	0	0
2	HD	0	0	0
3	HD	0	0	0
4	HD	5	0	5
5	HD	0	0	0
6	HD	0	0	0
7	HD	0	0	0
8	HD	0	0	0
9	HD	0	0	0
10	HD	0	0	0
11	HD	0	0	0
12	HD	0	0	0
13	HD	0	0	0
14	HD	0	0	0
15	HD	4	4	0
16	HD	0	0	0
17	HD	0	0	0
18	HD	0	0	0
20	HD	0	0	0
21	HD	0	0	0
22	HD	0	0	0
23	HD	0	0	0
24	HD	0	0	0
25	HD	0	0	0
26	HD	0	0	0
	N	26	26	26
	Mean	0.4	0.2	0.2
	SD	1.3	0.8	1
	Median	0	0	0
	Min	0	0	0
	Max	5	4	5

Table S3. Concordance between CTCs status and therapy response as assessed by imaging (PR = partial response; SD = stable disease; PD = progressive disease; MBA = metabolism-based assay; CS = CellSearch).

First imaging response	MBA			First imaging response	CS		
	<6	≥6	Tot		<5	≥5	Tot
T0 (k=0.761)				T0 (k=0.441)			
PR/SD	14	1	15	PR/SD	10	2	12
PD	2	9	11	PD	4	6	10
<i>Tot</i>	16	10	26	<i>Tot</i>	14	8	22
T1 (k=0.123)				T1 (k=0.431)			
PR/SD	11	2	13	PR/SD	10	1	11
PD	6	3	9	PD	4	4	8
<i>Tot</i>	17	5	22	<i>Tot</i>	14	4	18