

**Khera et al. “Post-discharge Acute Care and Outcomes in the Era of Readmission
Reduction: A National Retrospective Cohort Study of Medicare Beneficiaries in the
United States”**

ONLINE-ONLY SUPPLEMENT

SUPPLEMENTARY METHODS

Evaluation of the Assumptions of Linear Regression

We evaluated and confirmed that yearly data that were assessed in ordinary least squares regression, satisfied all assumptions of linear regression, including linearity, normality of residuals and homoscedasticity. In addition to visual assessment of plots, we employed the runs test assesses linearity based on randomness of the distribution of data points distributed around regression line. The test is based on the statistical assumption that if the data do not deviate significantly from linearity, data points are randomly distributed above and below the regression line. A "run" in the context of the test represent a series of consecutive points with either all positive or all negative residuals. If the number of points above the regression line are " N_{above} ", and the number below the line are " N_{below} ", the expected number of runs is: $[(2 \times N_{above} \times N_{below}) / (N_{above} + N_{below})] + 1$. Fewer than expected number of runs is suggestive of deviation from deviation from linearity.

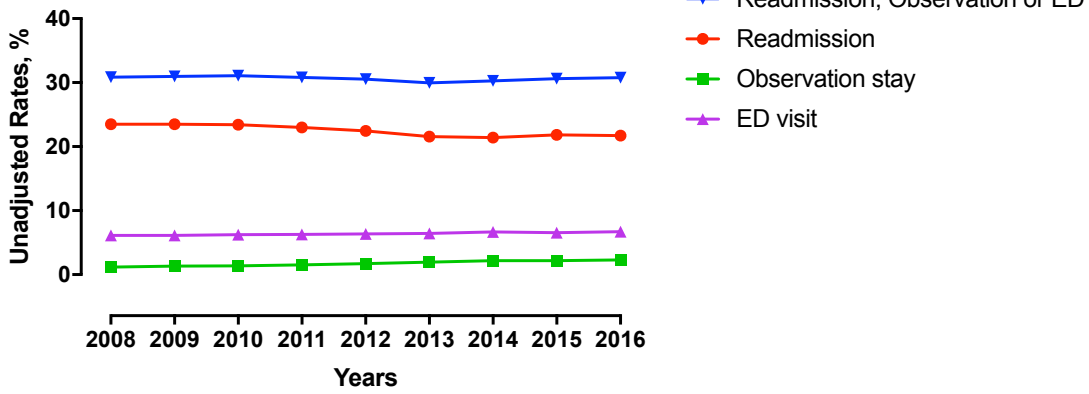
Reference: Zar, J.H. (2010). Biostatistical analysis. 5th Edition. Pearson Prentice Hall, New Jersey.

SUPPLEMENTARY FIGURES

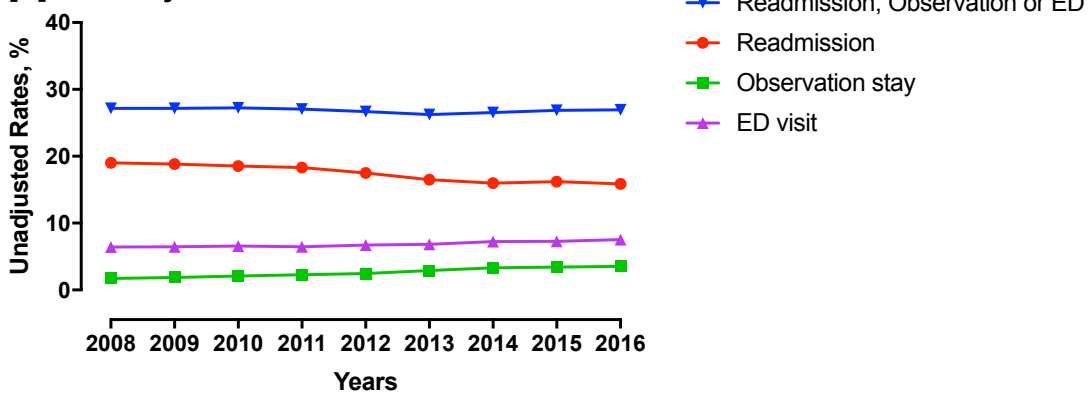
eFigure 1: Trends in unadjusted post-discharge care use, 2008-2016.

Readmissions, observation stays, and emergency department (ED) visits are mutually exclusive, presented in order of hierarchy.

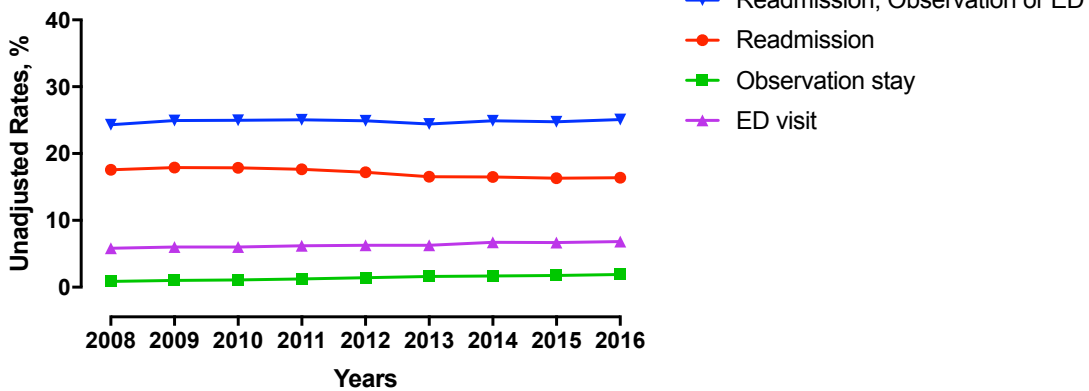
[A] Heart Failure



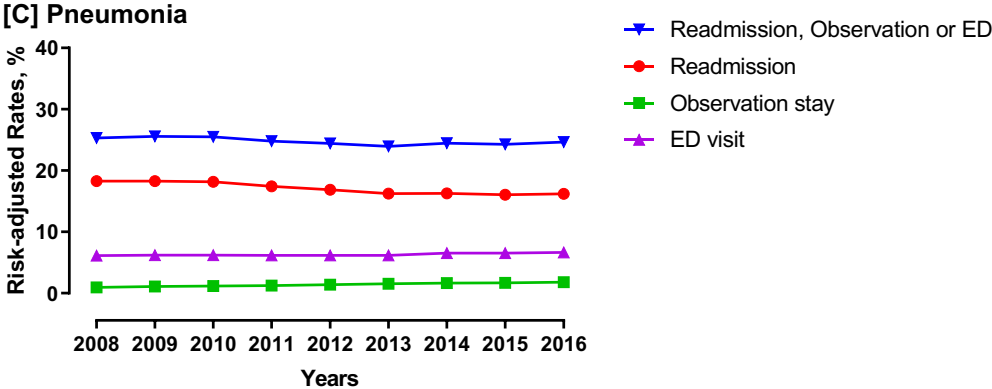
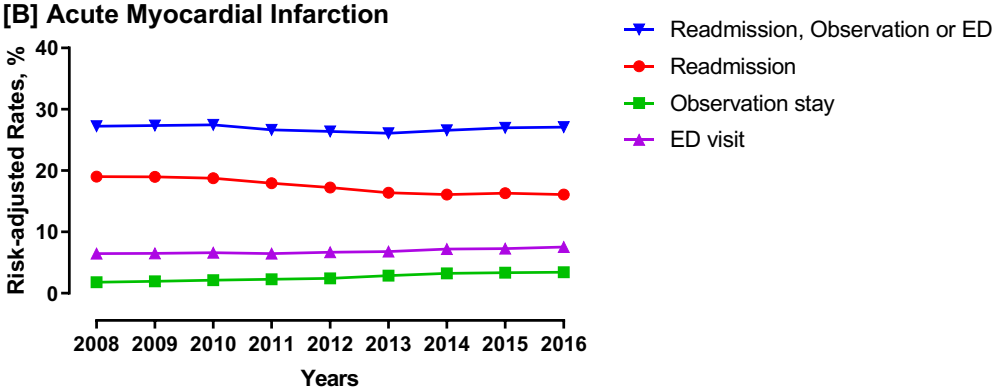
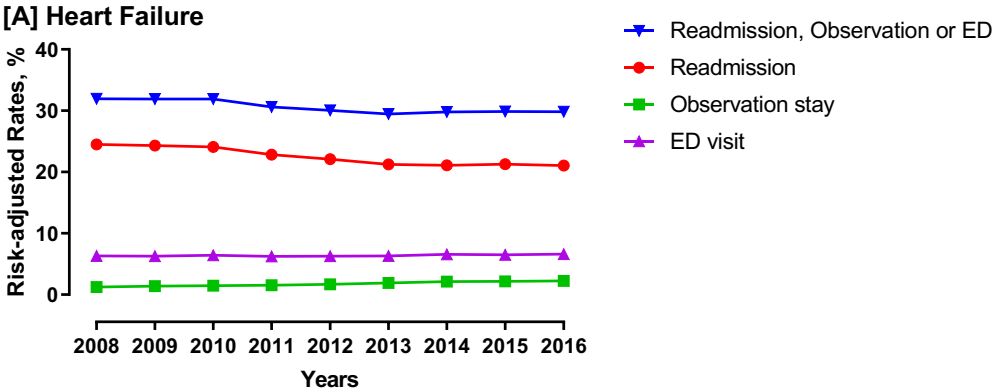
[B] Acute Myocardial Infarction



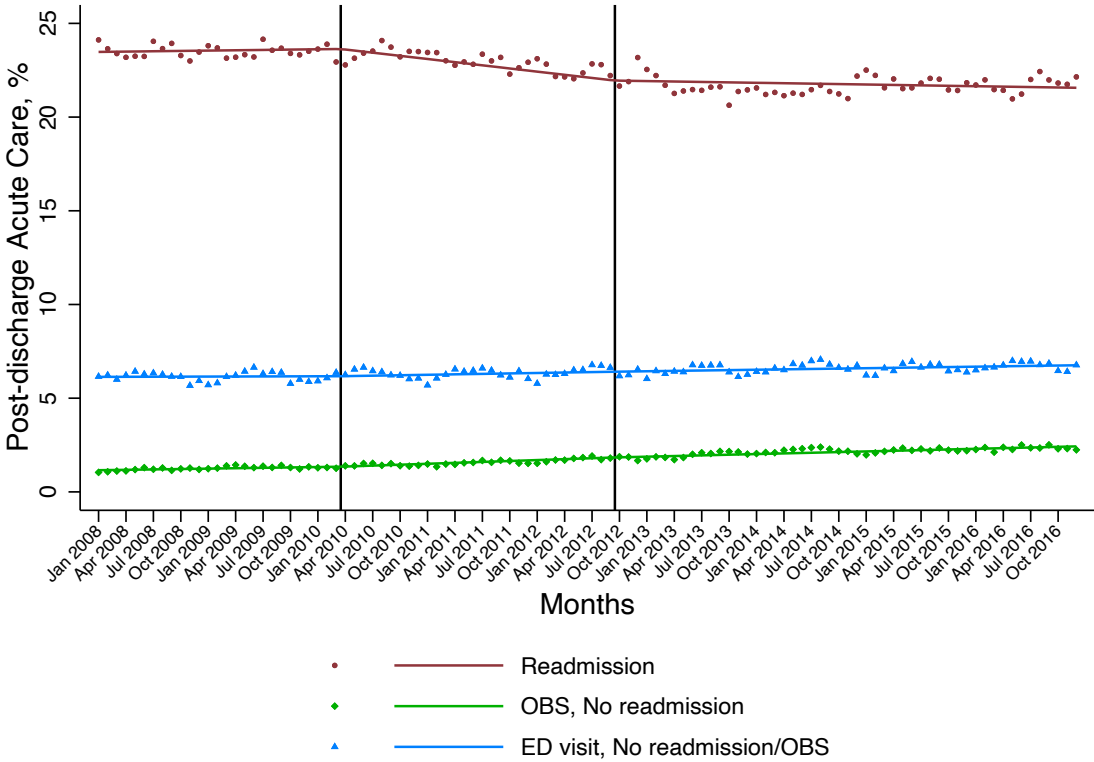
[C] Pneumonia



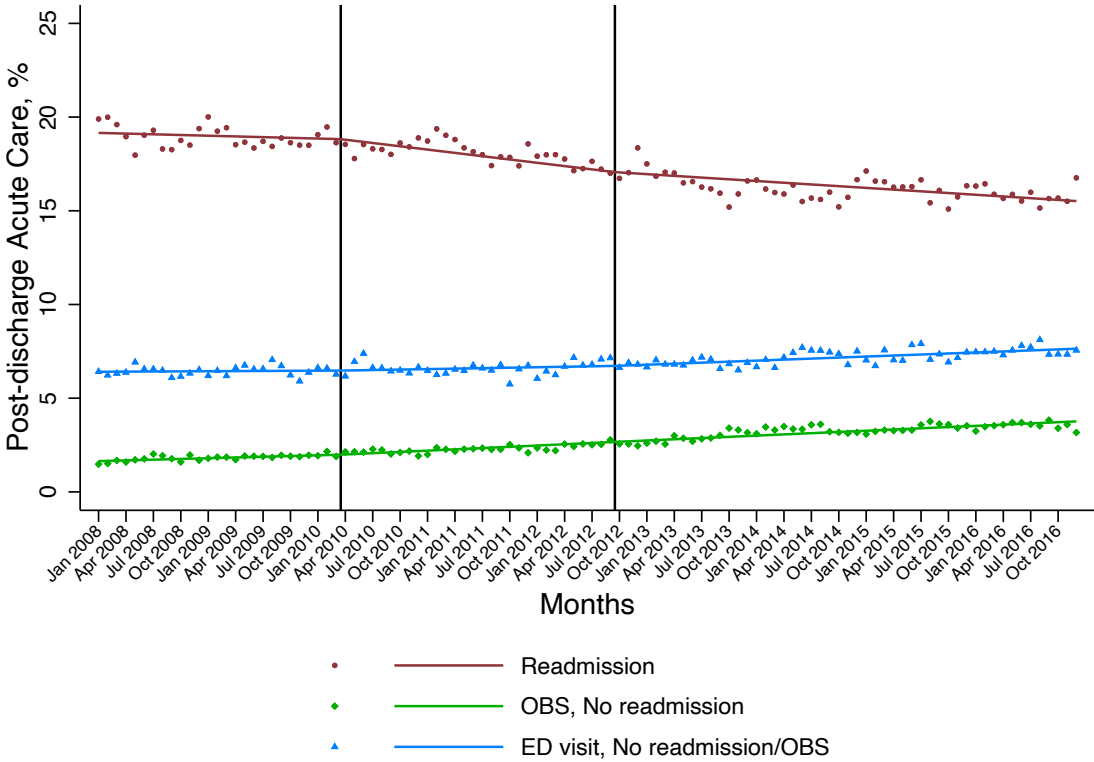
eFigure 2: Trends in risk-adjusted post-discharge care use, 2008-2016.
 Readmissions, observation stays, and emergency department (ED) visits are mutually exclusive, presented in order of hierarchy.



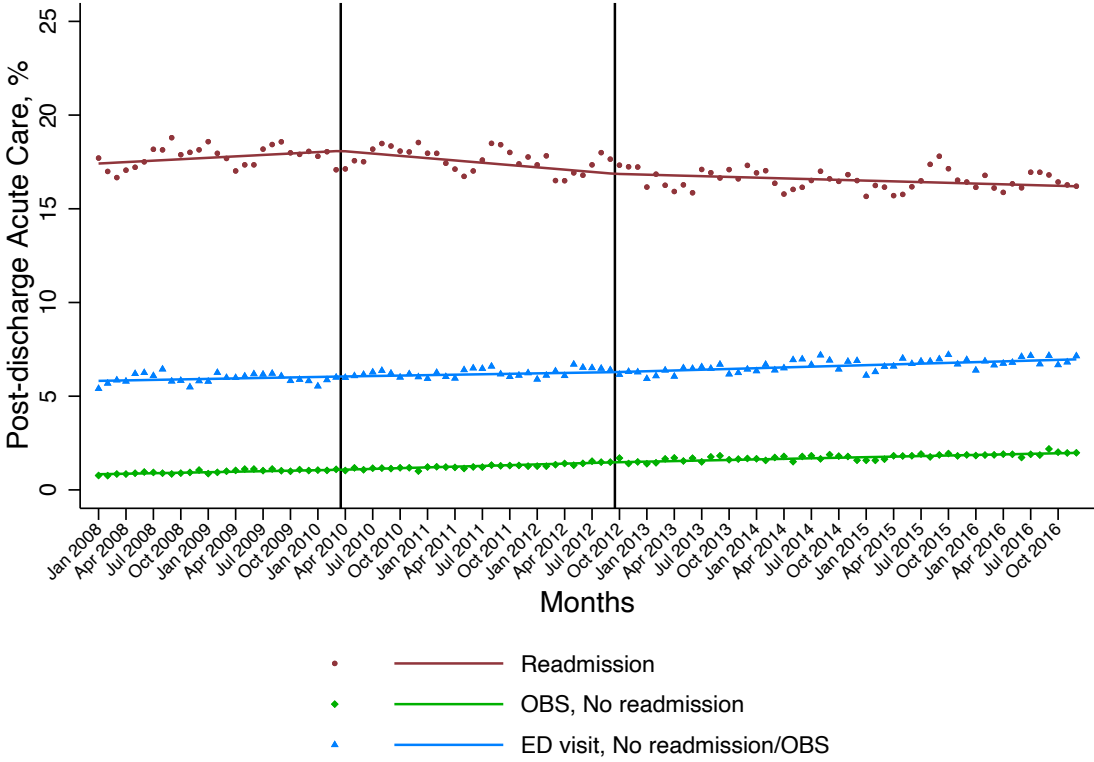
eFigure 3: Heart Failure - Interrupted time series models for unadjusted rates of post-discharge acute care utilization



eFigure 4: Acute Myocardial Infarction - Interrupted time series models for unadjusted rates of post-discharge acute care utilization

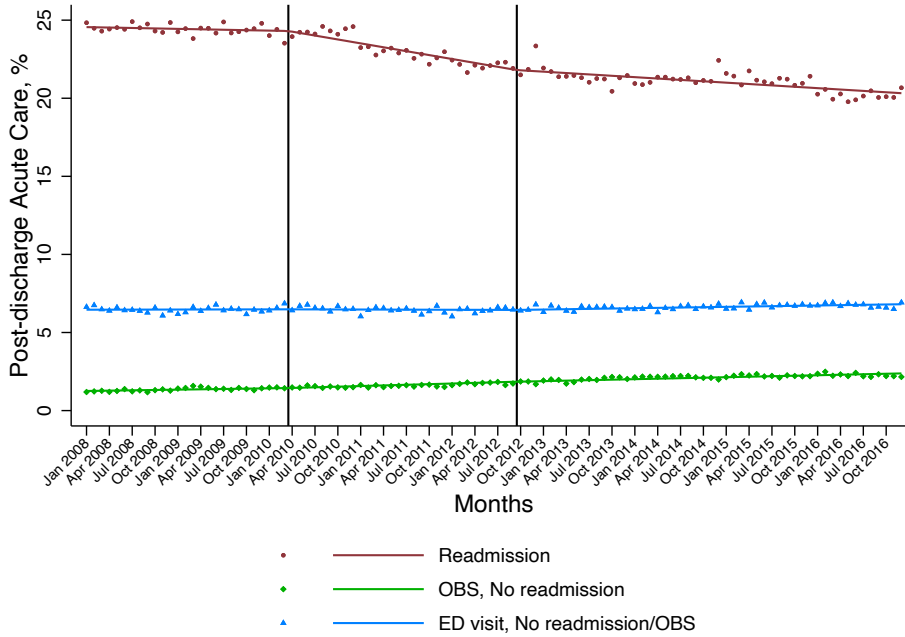


eFigure 5: Pneumonia - Interrupted time series models for unadjusted rates of post-discharge acute care utilization

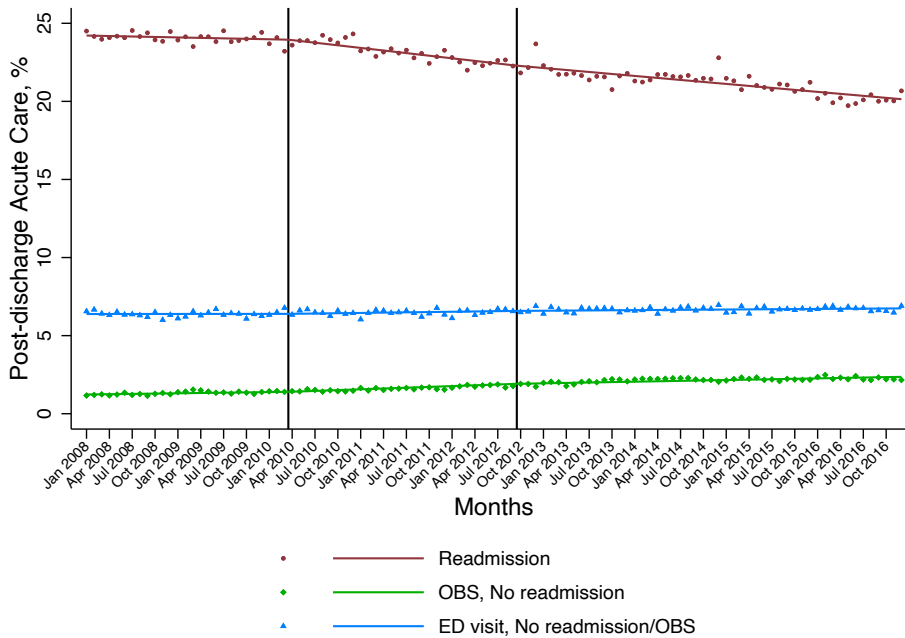


eFigure 6: Heart Failure- Interrupted time series models for unadjusted rates of post-discharge acute care utilization, by risk-adjustment strategy

(A) Risk-adjusted, secondary cohort, all codes from inpatient and outpatient claims

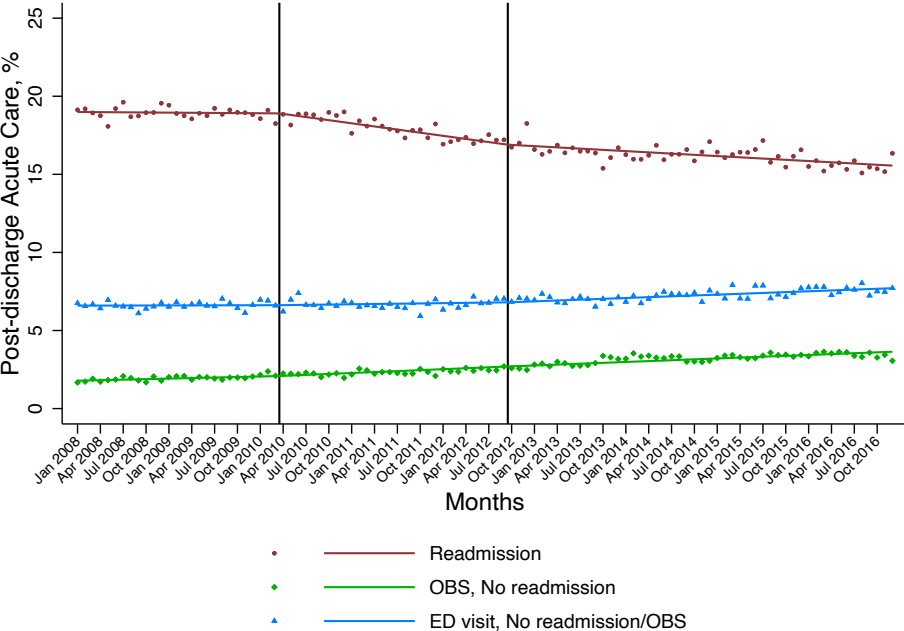


(B) Risk-adjusted, secondary cohort, 9 codes from inpatient claims + outpatient claims

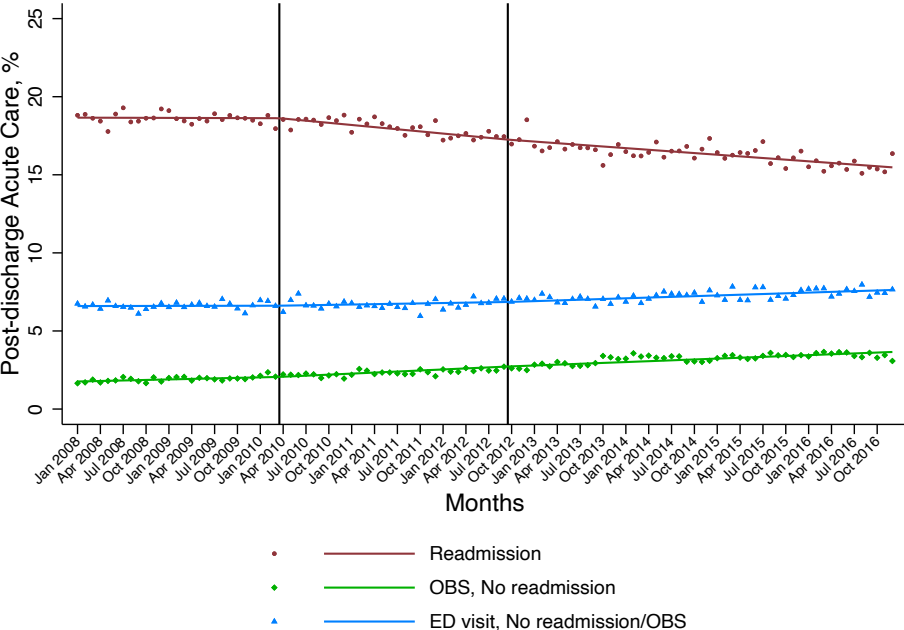


eFigure 7: Acute Myocardial Infarction - Interrupted time series models for unadjusted rates of post-discharge acute care utilization, by risk-adjustment strategy

(A) Risk-adjusted, secondary cohort, all codes from inpatient and outpatient claims

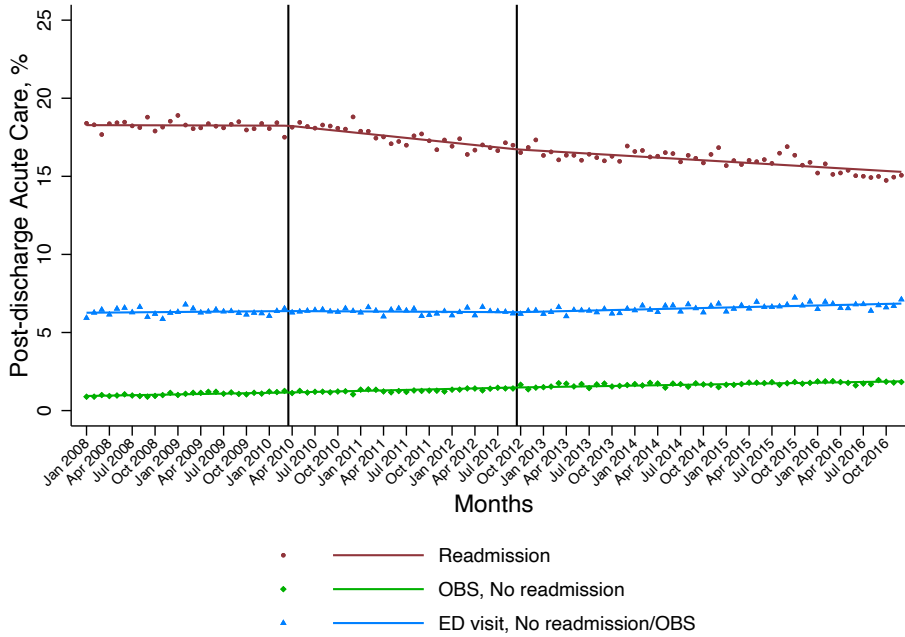


(B) Risk-adjusted, secondary cohort, 9 codes from inpatient claims + outpatient claims

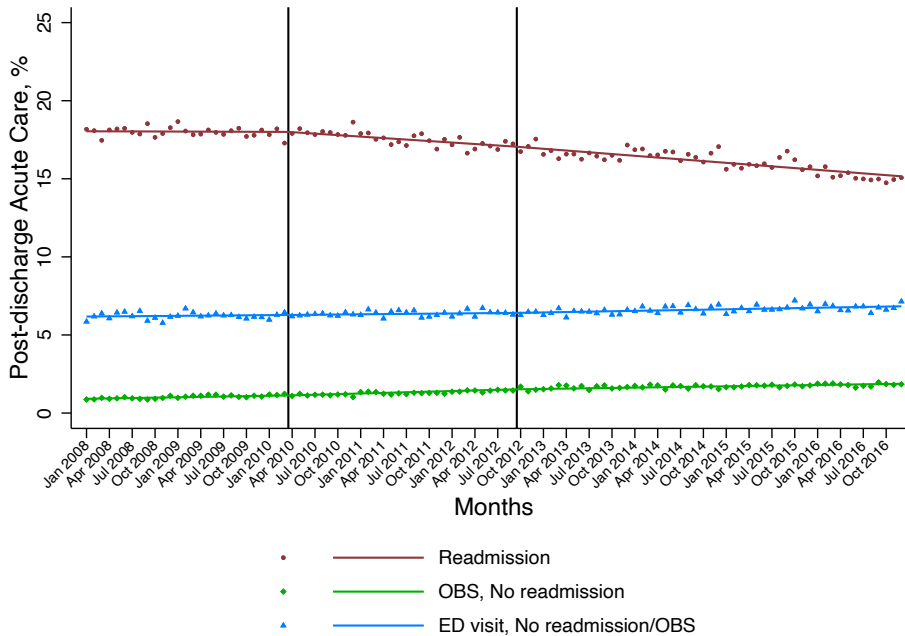


eFigure 8: Pneumonia - Interrupted time series models for unadjusted rates of post-discharge acute care utilization, by risk-adjustment strategy

(A) Risk-adjusted, secondary cohort, all codes from inpatient and outpatient claims

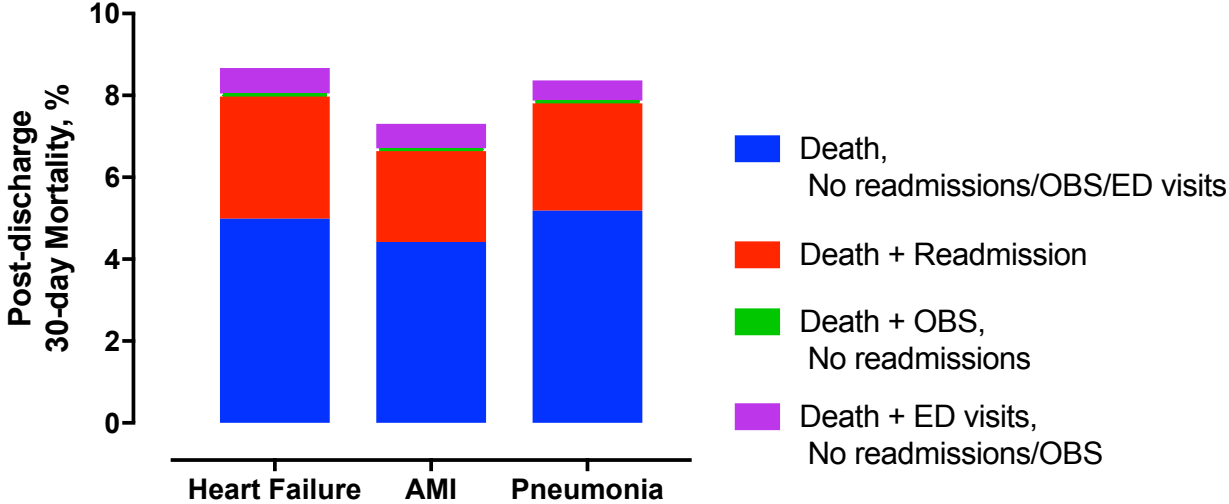


(B) Risk-adjusted, secondary cohort, 9 codes from inpatient claims + outpatient claims

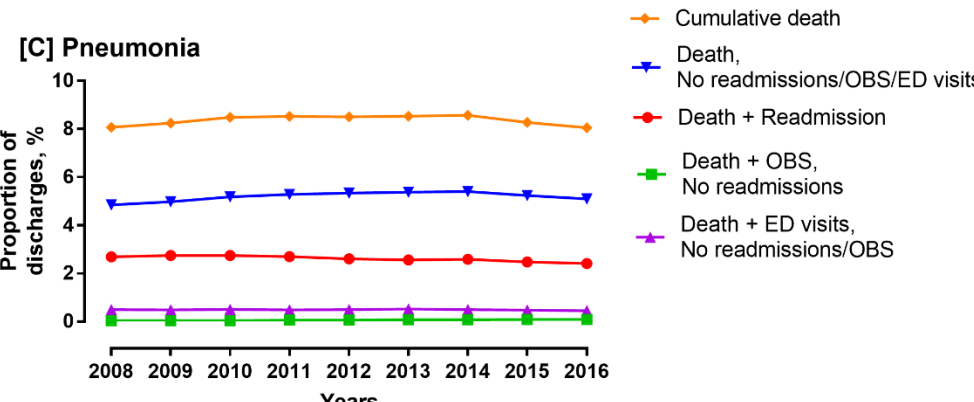
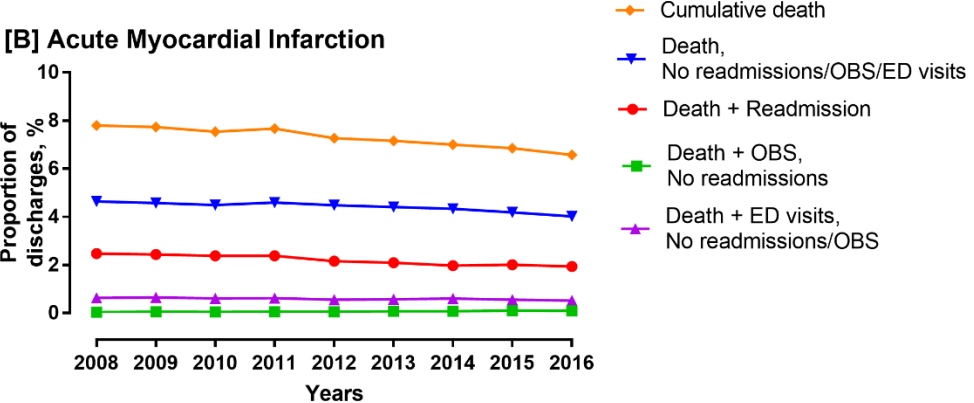
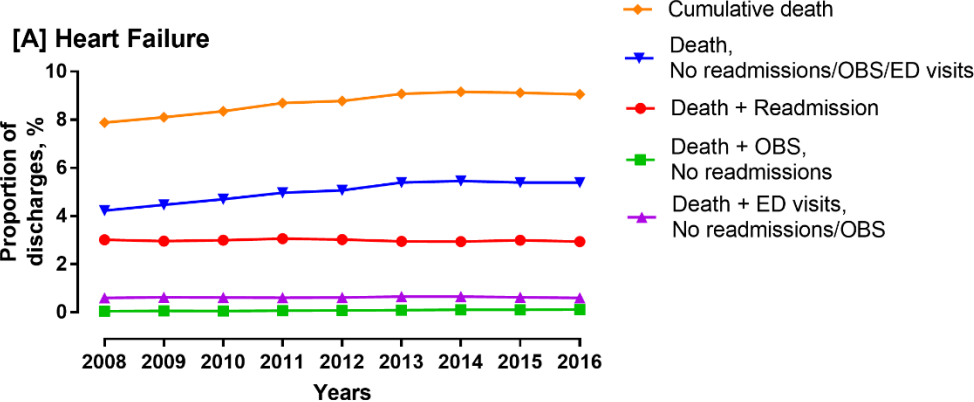


eFigure 9: Proportion of Post-discharge 30-day Mortality, By Post-discharge Care Utilization.

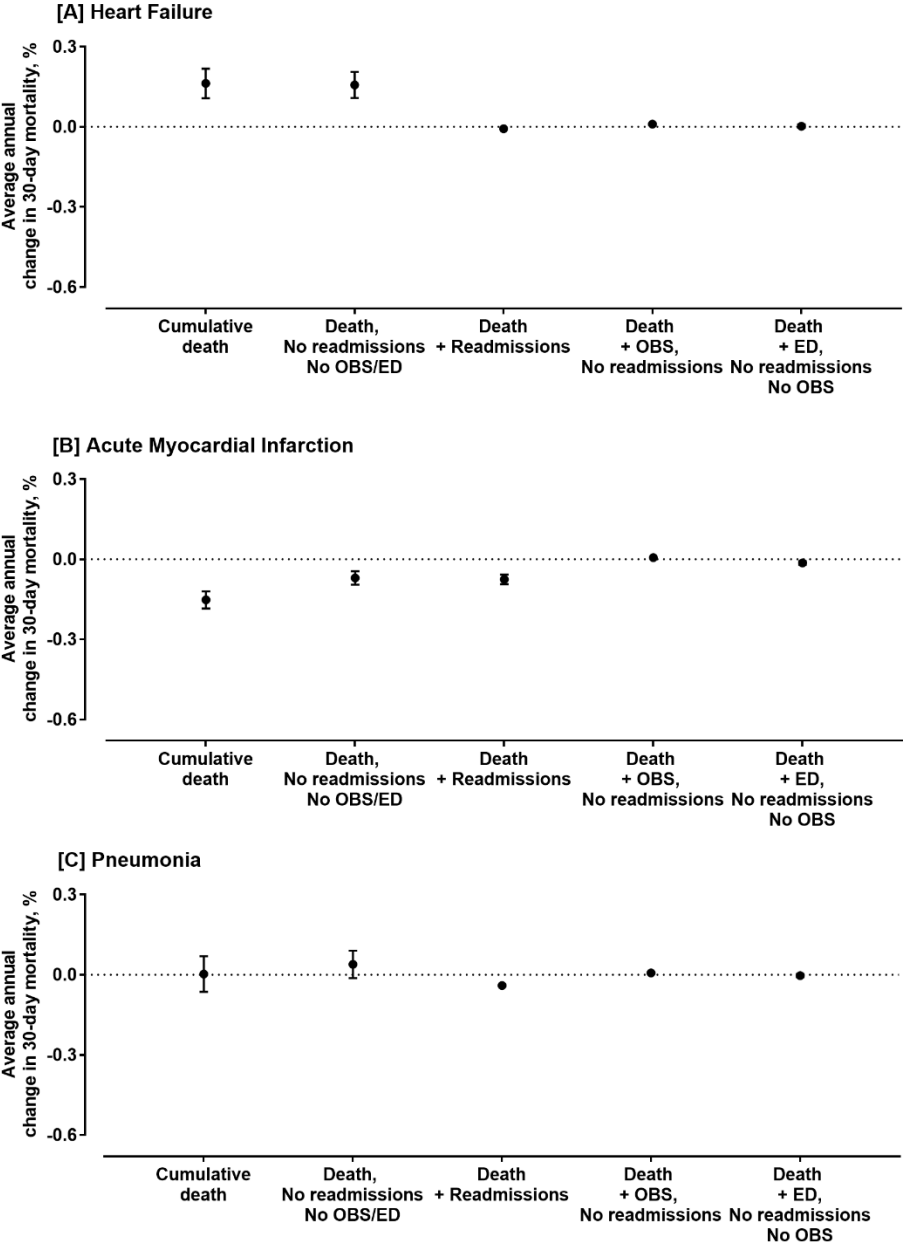
AMI – acute myocardial infarction, ED – emergency department, OBS – observation stay



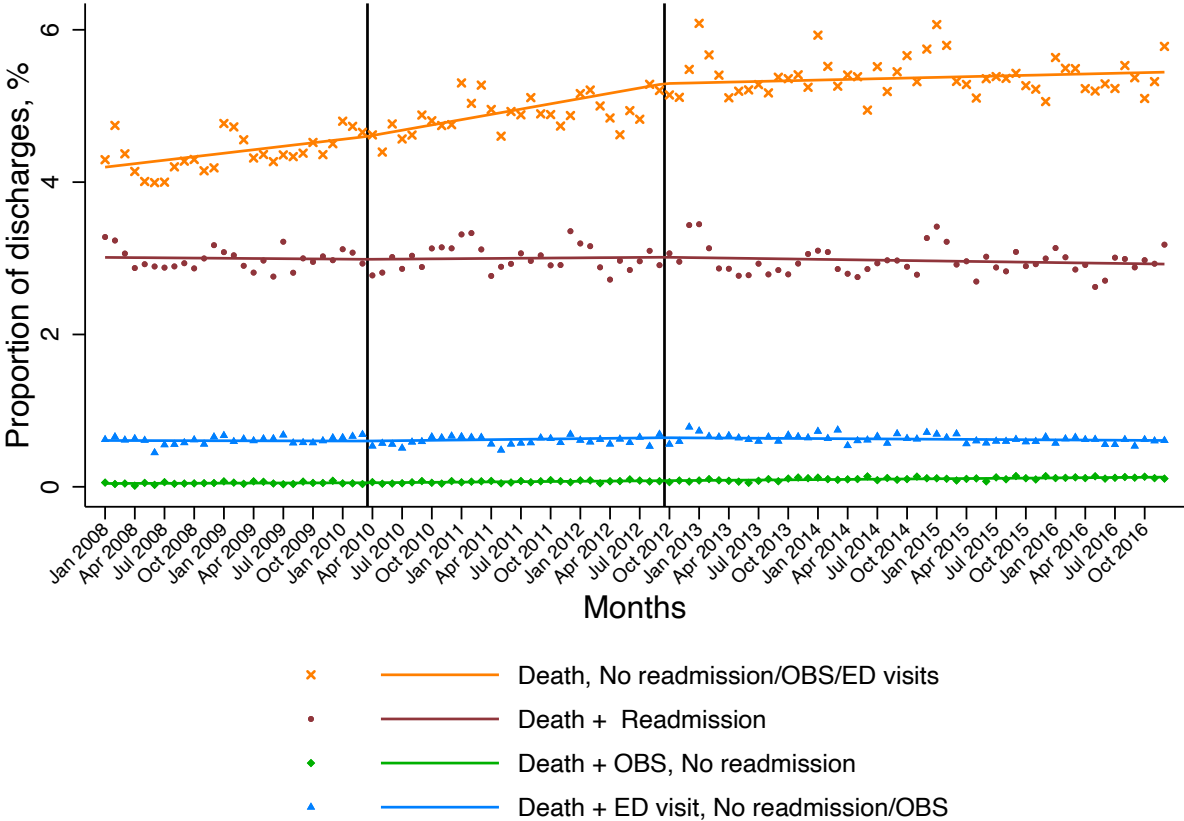
eFigure 10: Deaths in the 30-day post-discharge period by post-discharge care use, 2008-2016. Points represent proportion of patients discharged alive who died in the post-discharge 30-day period, based on post-discharge acute care utilization (Abbreviations: ED: emergency department, OBS: observation stay).



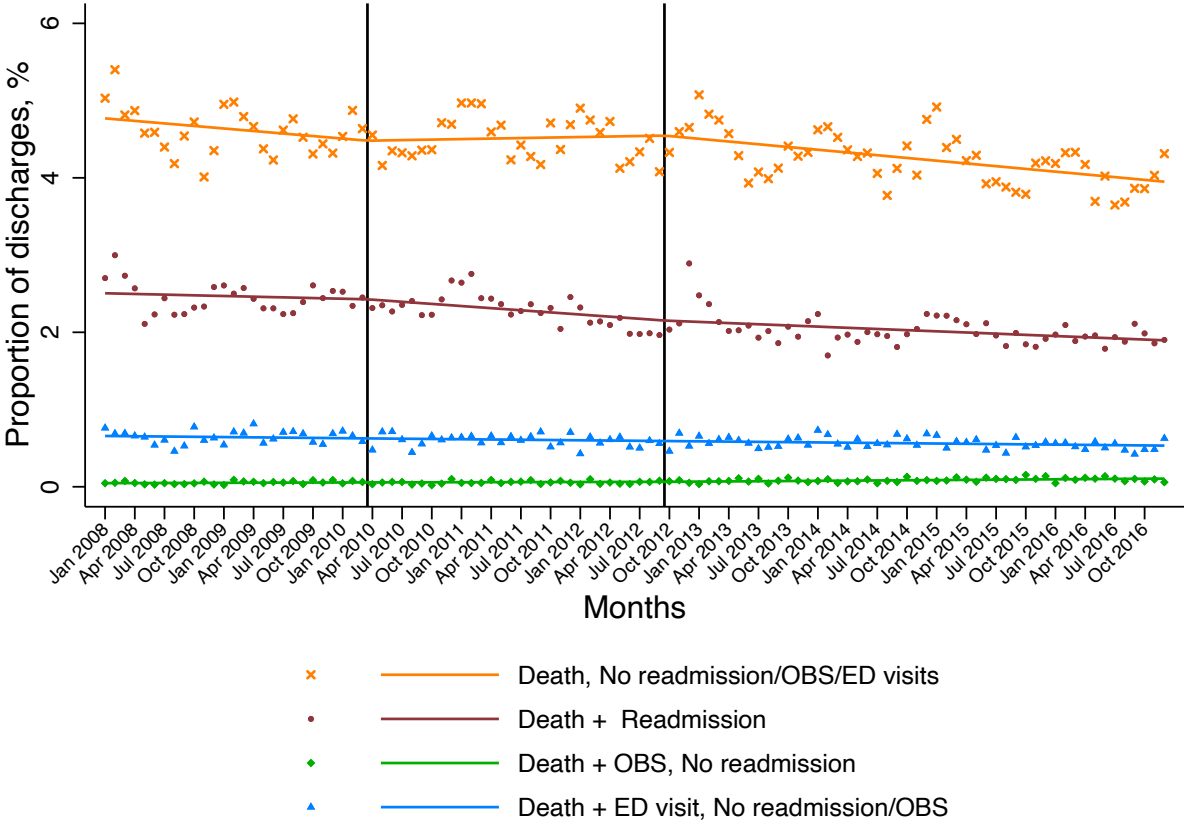
eFigure 11: Average annual absolute percentage change in unadjusted 30-day post-discharge mortality by post-discharge care use. Coefficient for annual change derived from ordinary least squares regression. Readmissions, observation stays (OBS), and emergency department (ED) visits are mutually exclusive, presented in order of hierarchy.



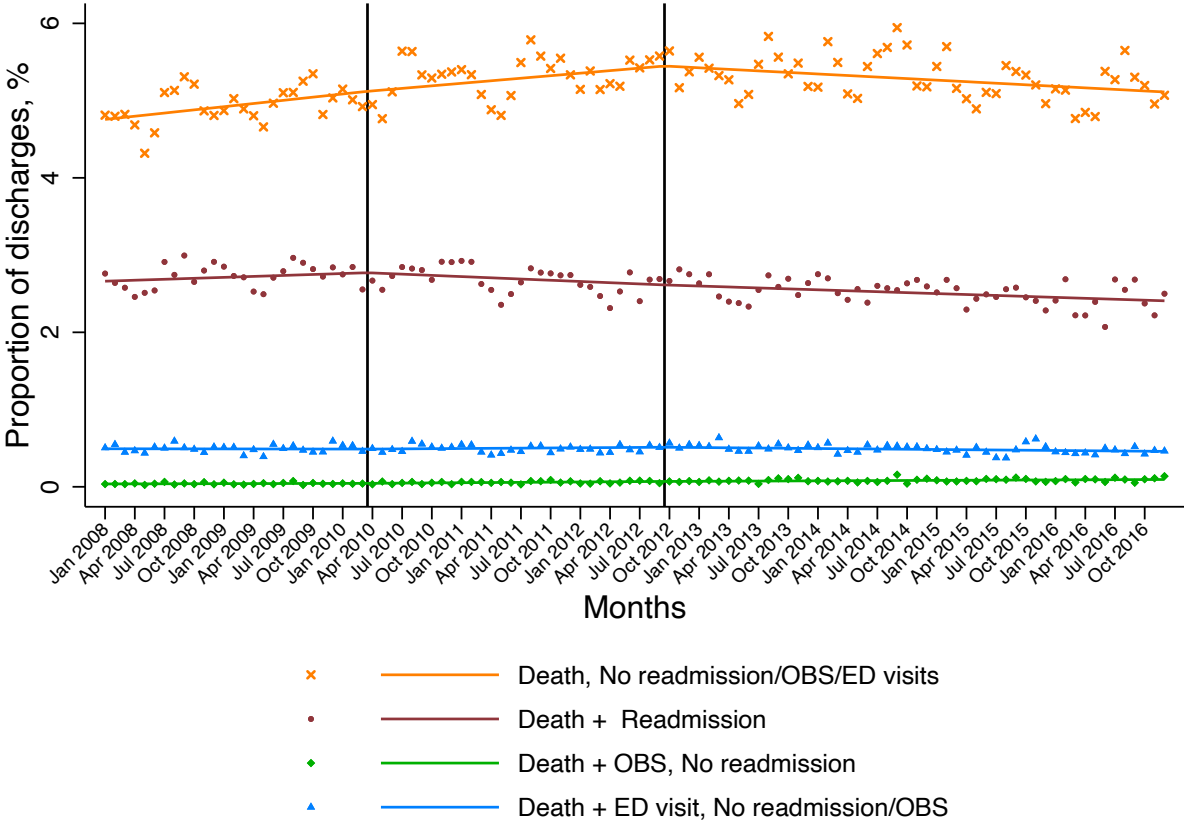
eFigure 12: Heart Failure - Interrupted time series models for unadjusted monthly mortality rates across different post-acute care settings



eFigure 13: Acute Myocardial Infarction - Interrupted time series models for unadjusted monthly mortality rates across different post-acute care settings

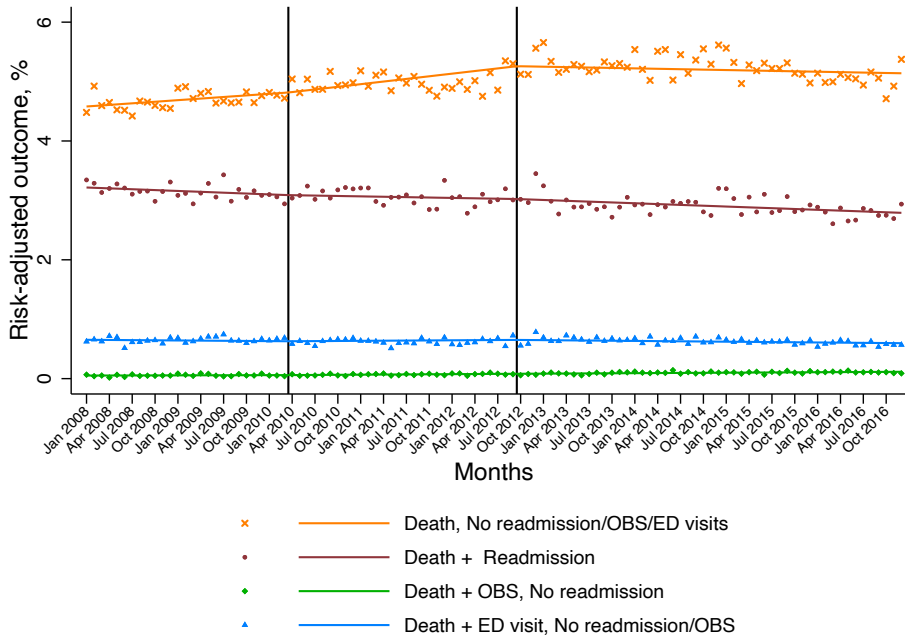


eFigure 14: Pneumonia - Interrupted time series models for unadjusted monthly mortality rates across different post-acute care settings

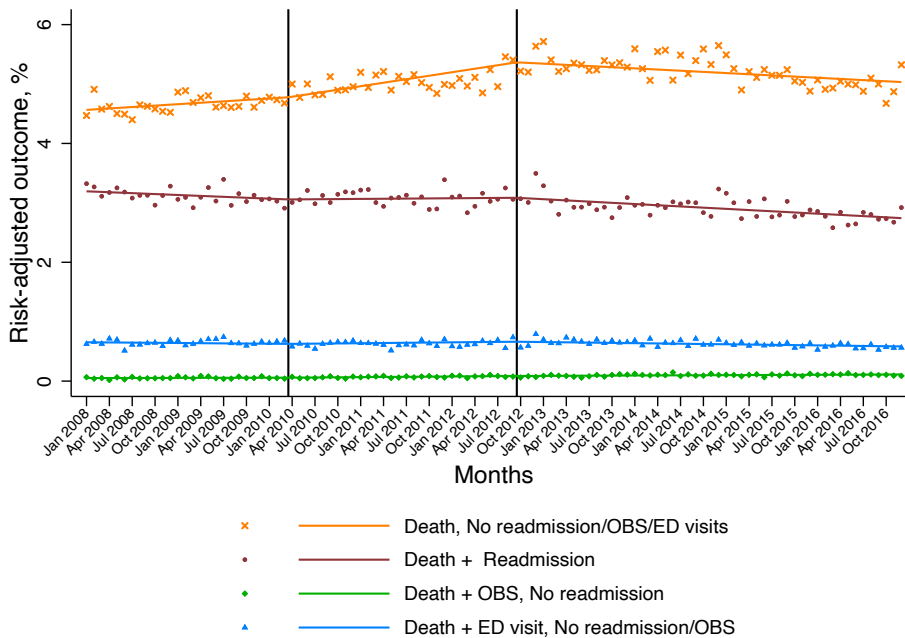


eFigure 15: Heart Failure- Interrupted time series models for risk-adjusted monthly mortality rates across different post-acute care settings, by risk-adjustment strategy.

A) Risk-adjusted, secondary cohort, all codes from inpatient and outpatient claims

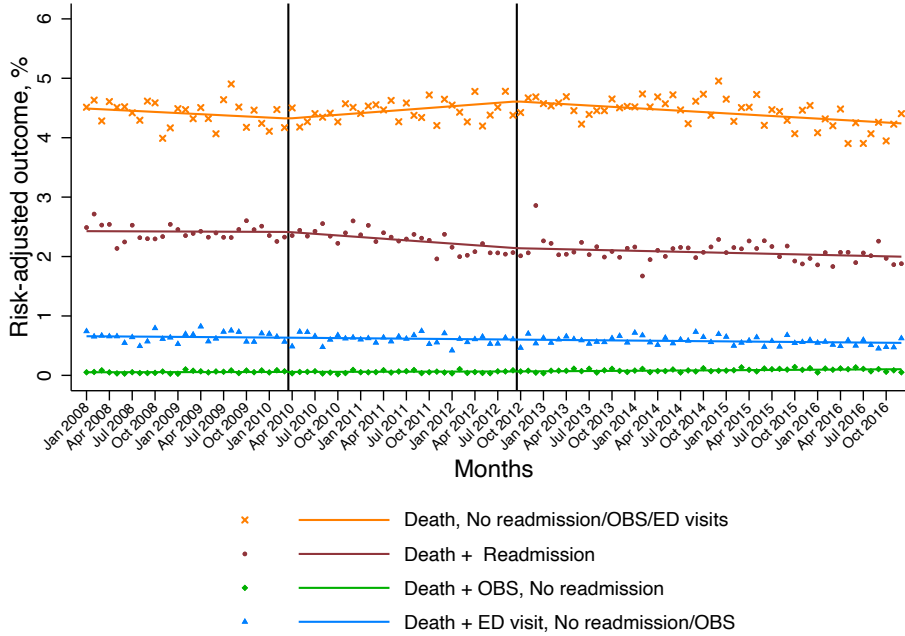


B) Risk-adjusted, secondary cohort, 9 codes from inpatient claims + outpatient claims

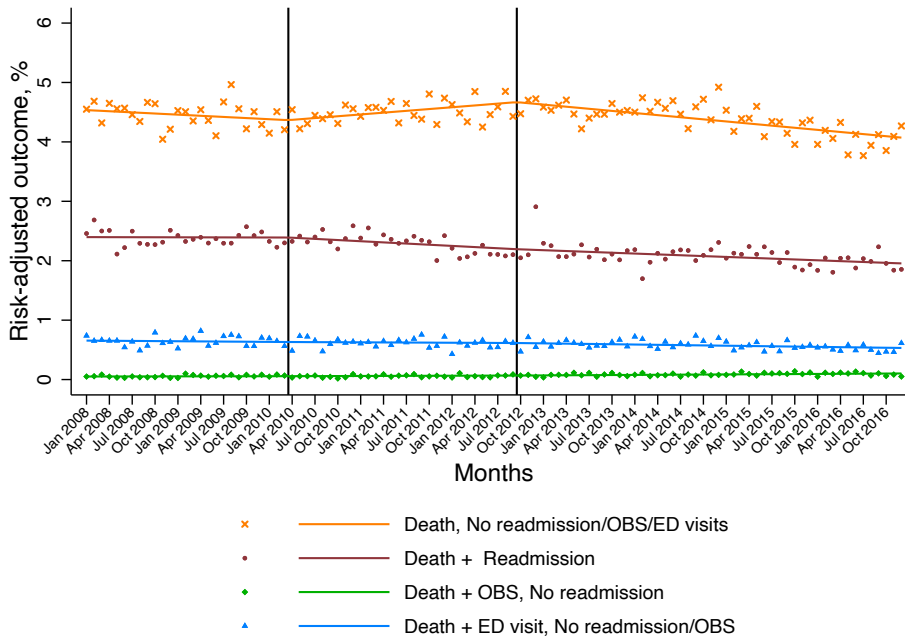


eFigure 15: Acute Myocardial Infarction- Interrupted time series models for risk-adjusted monthly mortality rates across different post-acute care settings, by risk-adjustment strategy.

A) Risk-adjusted, secondary cohort, all codes from inpatient and outpatient claims

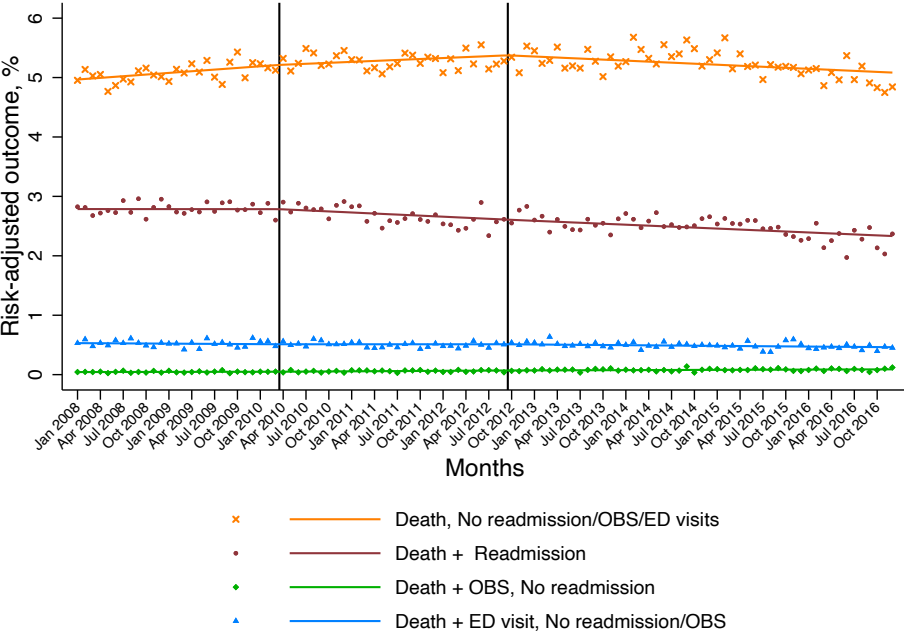


B) Risk-adjusted, secondary cohort, 9 codes from inpatient claims + outpatient claims

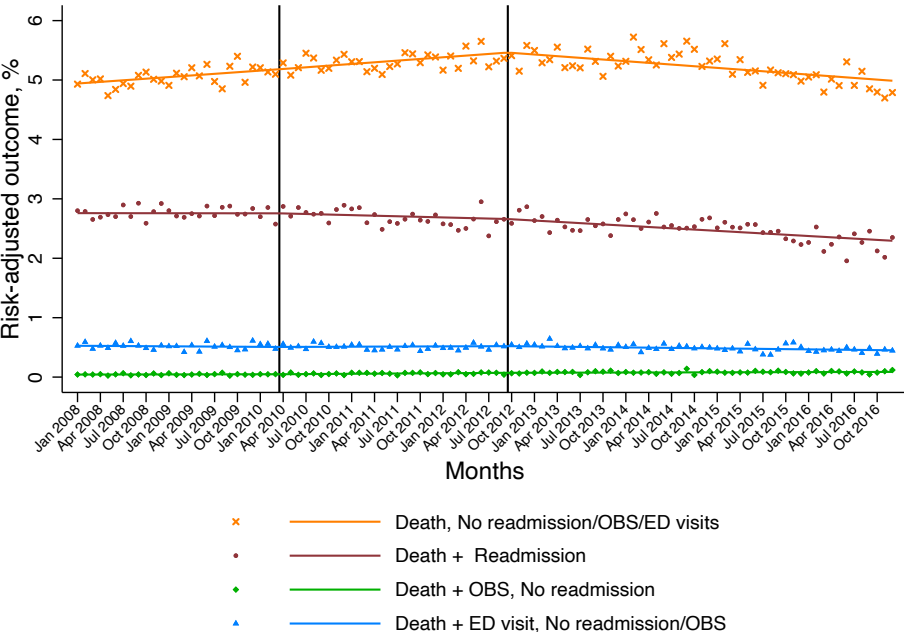


eFigure 15: Pneumonia - Interrupted time series models for risk-adjusted monthly mortality rates across different post-acute care settings, by risk-adjustment strategy.

A) Risk-adjusted, secondary cohort, all codes from inpatient and outpatient claims



B) Risk-adjusted, secondary cohort, 9 codes from inpatient claims + outpatient claims



SUPPLEMENTARY TABLES

eTable 1: Covariates included in the risk-adjustment model for heart failure. The condition category (CC) codes represent combination of International Classification of Diseases (ICD) codes that are mapped to each condition. The codes required to map CC codes to ICD-9 and ICD-10 codes are available through the Centers for Medicare & Medicaid Services (Link: <https://www.cms.gov/Medicare/Health-Plans/MedicareAdvtgSpecRateStats/Risk-Adjustors.html>).

Demographics
Age: Mean (SD)
Male
Cardiovascular
Coronary Artery Bypass Graft Surgery
Congestive Heart failure (CC 80)
Acute coronary syndrome (CC 81, 82)
Arrhythmias (CC 92, 93)
Cardio-respiratory failure and shock (CC 79)
Valvular or Rheumatic Heart Disease (CC 86)
Vascular or Circulatory Disease (CC 104, 105, 106)
Chronic atherosclerosis (CC 83, 84)
Other and unspecified heart disease (CC 94)
Comorbidity
Hemiplegia, Paralysis, Functional Disability (CC 67 to 69, 100 to 102, 177, 178)
Stroke (CC 95, 96)
Renal Failure (CC 131)
Chronic Obstructive Pulmonary Disease (CC 108)
Diabetes and DM Complications (CC 15 to 20, 119, 120)
Disorders of fluid/electrolyte/acid-base (CC22, 23)
Other urinary tract disorders (CC 136)
Decubitus ulcer or chronic skin ulcer (CC 148, 149)
Other gastrointestinal disorders (CC 36)
Peptic ulcer, hemorrhage, other specified gastrointestinal disorders (CC 34)
Severe hematological disorders (CC 44)
Nephritis (CC132)
Dementia and Senility (CC 49, 50)
Metastatic Cancer and Acute Leukemia (CC 7)
Cancer (CC 8 to 12)
Liver and biliary disease (CC 25 to 30)
End-stage renal disease or dialysis (CC 129, 130)
Asthma (CC 110)
Iron deficiency and other/unspecified anemias and blood disease (CC 47)
Pneumonia (CC 111 to 113)
Drug/alcohol abuse/dependence/psychosis (CC 51 to 53)
Major psych disorders (CC 54 to 56)
Depression (CC 58)
Other psychiatric disorders (CC 60)
Fibrosis of lung and other chronic lung disorders (CC 109)
Protein-Calorie Malnutrition (CC 21)

eTable 2: Covariates included in the risk-adjustment model for acute myocardial infarction. The condition category (CC) codes represent combination of International Classification of Diseases (ICD) codes that are mapped to each condition. The codes required to map CC codes to ICD-9 and ICD-10 codes are available through the Centers for Medicare & Medicaid Services (Link: <https://www.cms.gov/Medicare/Health-Plans/MedicareAdvtgSpecRateStats/Risk-Adjustors.html>).

Demographics
Age: Mean (SD)
Male
Cardiovascular condition
Percutaneous Transluminal Coronary Angioplasty
Coronary Artery Bypass Graft Surgery
Congestive Heart failure (CC 80)
Acute coronary syndrome (CC 81, 82)
Anterior Myocardial Infarction (ICD9 410.00-410.19)
Other Location of Myocardial Infarction (ICD9 410.20-410.69)
Angina pectoris/old myocardial infarction (CC 83)
Coronary atherosclerosis/other chronic ischemic heart disease (CC 84)
Valvular or Rheumatic Heart Disease (CC 86)
Arrhythmias (CC 92, 93)
Comorbidity
Cerebrovascular Disease (CC 97 to 99, 103)
Stroke (CC 95, 96)
Vascular or Circulatory Disease (CC 104, 105, 106)
Hemiplegia, Paralysis, Functional Disability (CC 67 to 69, 100 to 102, 177, 178)
Diabetes and DM Complications (CC 15 to 20, 119, 120)
Renal Failure (CC 131)
End-stage renal disease or dialysis (CC 129, 130)
Other urinary tract disorders (CC 136)
Chronic Obstructive Pulmonary Disease (CC 108)
Pneumonia (CC 111 to 113)
Asthma (CC 110)
Disorders of fluid/electrolyte/acid-base (CC22, 23)
History of infection (CC1, 3 to 6)
Metastatic Cancer and Acute Leukemia (CC 7)
Cancer (CC 8 to 12)
Iron deficiency and other/unspecified anemias and blood disease (CC 47)
Decubitus ulcer or chronic skin ulcer (CC 148, 149)
Dementia and Senility (CC 49, 50)
Protein-Calorie Malnutrition (CC 21)

eTable 3: Covariates included in the risk-adjustment model for pneumonia. The condition category (CC) codes represent combination of International Classification of Diseases (ICD) codes that are mapped to each condition. The codes required to map ICD-9 and ICD-10 codes to CC codes are available through the Centers for Medicare & Medicaid Services (Link: <https://www.cms.gov/Medicare/Health-Plans/MedicareAdvtgSpecRateStats/Risk-Adjustors.html>).

Demographics
Age: Mean (SD)
Male
Comorbidity
Coronary Artery Bypass Graft Surgery
History of infection (CC 1, 3-6)
Septicemia/shock (CC 2)
Metastatic Cancer and Acute Leukemia (CC 7)
Lung cancer (CC 8)
Lymphatic, head and neck, brain, and other major cancers; breast, prostate, colorectal and other cancers and tumors (CC 9, 10)
Diabetes and DM Complications (CC 15 to 20, 119, 120)
Protein-Calorie Malnutrition (CC 21)
Disorders of fluid/electrolyte/acid-base (CC22, 23)
Other gastrointestinal disorders (CC 36)
Severe hematological disorders (CC 44)
Iron deficiency and other/unspecified anemias and blood disease (CC 47)
Dementia and Senility (CC 49, 50)
Drug/alcohol abuse/dependence/psychosis (CC 51 to 53)
Major psych disorders (CC 54 to 56)
Other psychiatric disorders (CC 60)
Hemiplegia, Paralysis, Functional Disability (CC 67 to 69, 100 to 102, 177, 178)
Cardio-respiratory failure and shock (CC 79)
Congestive Heart failure (CC 80)
Acute coronary syndrome (CC 81, 82)
Chronic atherosclerosis (CC 83, 84)
Valvular or Rheumatic Heart Disease (CC 86)
Arrhythmias (CC 92, 93)
Stroke (CC 95, 96)
Vascular or Circulatory Disease (CC 104, 105, 106)
Chronic Obstructive Pulmonary Disease (CC 108)
Fibrosis of lung and other chronic lung disorders (CC 109)
Asthma (CC 110)
Pneumonia (CC 111 to 113)
Pleural effusion/pneumothorax (CC 114)
Other lung disorders (CC 115)
End-stage renal disease or dialysis (CC 129, 130)

Renal Failure (CC 131)
Urinary tract infection (CC 135)
Other urinary tract disorders (CC 136)
Decubitus ulcer or chronic skin ulcer (CC 148, 149)
Vertebral fractures (CC 157)
Other injuries (CC 162)

eTable 4: Heart Failure - Changes in Trends of Post-discharge Acute Care Use: Values represent slopes of change in monthly rates during the 3 periods relative to the HRRP and changes in these slopes at the announcement and implementation of Hospital Readmissions Reduction Program (HRRP), in interrupted time series models.

	Readmissions, Unadjusted	Observation stays, Unadjusted	ED visits, Unadjusted	Readmissions, Risk-adjusted	Observation stays, Risk-adjusted	ED visits, Risk- adjusted
Pre-HRRP	0.006 [-0.010,0.021]	0.007 [0.003,0.011]	0.001 [-0.007,0.010]	-0.008 [-0.022,0.006]	0.007 [0.003,0.010]	0.000 [-0.006,0.006]
HRRP anticipation	-0.056 [-0.067,-0.046]	0.016 [0.014,0.019]	0.008 [0.002,0.014]	-0.092 [-0.102,-0.083]	0.013 [0.011,0.016]	-0.001 [-0.005,0.003]
HRRP penalty	-0.008 [-0.015,-0.001]	0.012 [0.010,0.013]	0.007 [0.003,0.011]	-0.011 [-0.017,-0.005]	0.011 [0.009,0.012]	0.008 [0.005,0.011]
Change: Pre-HRRP to HRRP anticipation	-0.062 [-0.086,-0.038]	0.009 [0.004,0.015]	0.007 [-0.007,0.020]	-0.084 [-0.106,-0.063]	0.007 [0.001,0.012]	-0.001 [-0.011,0.008]
	<0.001	0.001	0.32	<0.001	0.02	0.76
Change: HRRP anticipation to HRRP penalty	0.049 [0.033,0.065]	-0.005 [-0.009,-0.001]	-0.001 [-0.010,0.008]	0.081 [0.067,0.096]	-0.003 [-0.006,0.001]	0.009 [0.003,0.015]
	<0.001	0.01	0.79	<0.001	0.17	0.005

eTable 5: Acute Myocardial Infarction - Changes in Trends of Post-discharge Acute Care Use: Values represent slopes of change in monthly rates during the 3 periods relative to the HRRP and changes in these slopes at the announcement and implementation of Hospital Readmissions Reduction Program (HRRP), in interrupted time series models.

	Readmissions, Unadjusted	Observation stays, Unadjusted	ED visits, Unadjusted	Readmissions, Risk-adjusted	Observation stays, Risk-adjusted	ED visits, Risk- adjusted
Pre-HRRP	-0.013 [-0.032,0.007]	0.013 [0.007,0.020]	0.002 [-0.008,0.013]	-0.001 [-0.016,0.014]	0.011 [0.005,0.018]	0.000 [-0.009,0.010]
HRRP anticipation	-0.059 [-0.072,-0.045]	0.023 [0.018,0.027]	0.008 [0.001,0.016]	-0.075 [-0.085,-0.064]	0.020 [0.016,0.025]	0.006 [-0.000,0.013]
HRRP penalty	-0.031 [-0.039,-0.022]	0.022 [0.019,0.025]	0.018 [0.013,0.023]	-0.016 [-0.023,-0.010]	0.020 [0.017,0.023]	0.020 [0.015,0.024]
Change: Pre-HRRP to HRRP anticipation	-0.046 [-0.076,-0.016]	0.010 [-0.000,0.020]	0.006 [-0.010,0.022]	-0.073 [-0.096,-0.050]	0.009 [-0.001,0.019]	0.006 [-0.009,0.020]
	0.003	0.06	0.46	<0.001	0.07	0.43
Change: HRRP anticipation to HRRP penalty	0.028 [0.008,0.048]	-0.001 [-0.008,0.006]	0.010 [-0.001,0.021]	0.058 [0.043,0.074]	-0.000 [-0.007,0.006]	0.013 [0.004,0.023]
	0.006	0.76	0.07	<0.001	0.94	0.006

eTable 6: Pneumonia - Changes in Trends of Post-discharge Acute Care Use: Values represent slopes of change in monthly rates during the 3 periods relative to the HRRP and changes in these slopes at the announcement and implementation of Hospital Readmissions Reduction Program (HRRP), in interrupted time series models.

	Readmissions, Unadjusted	Observation stays, Unadjusted	ED visits, Unadjusted	Readmissions, Risk-adjusted	Observation stays, Risk-adjusted	ED visits, Risk- adjusted
Pre-HRRP	0.025 [0.007,0.044]	0.009 [0.006,0.012]	0.009 [0.001,0.017]	0.001 [-0.010,0.013]	0.008 [0.005,0.011]	0.002 [-0.005,0.008]
HRRP anticipation	-0.041 [-0.054,-0.028]	0.013 [0.011,0.015]	0.008 [0.002,0.014]	-0.061 [-0.069,-0.053]	0.010 [0.008,0.012]	-0.002 [-0.006,0.003]
HRRP penalty	-0.013 [-0.022,-0.004]	0.010 [0.008,0.011]	0.014 [0.009,0.018]	-0.009 [-0.015,-0.004]	0.008 [0.007,0.010]	0.012 [0.009,0.016]
Change: Pre-HRRP to HRRP anticipation	-0.066 [-0.094,-0.038]	0.004 [-0.000,0.009]	-0.001 [-0.013,0.012]	-0.062 [-0.079,-0.045]	0.003 [-0.002,0.007]	-0.003 [-0.014,0.007]
	<0.001	0.06	0.89	<0.001	0.26	0.50
Change: HRRP anticipation to HRRP penalty	0.028 [0.008,0.047]	-0.003 [-0.007,-0.000]	0.006 [-0.003,0.014]	0.052 [0.040,0.064]	-0.002 [-0.005,0.001]	0.014 [0.007,0.021]
	0.007	0.039	0.21	<0.001	0.20	<0.001

eTable 7: Heart Failure - Changes in Trends of Post-discharge Acute Care Use Across Risk Adjustment Strategies: Values represent slopes of change in monthly rates during the 3 periods relative to the HRRP and changes in these slopes at the announcement and implementation of Hospital Readmissions Reduction Program (HRRP), in interrupted time series models.

	All inpatient + outpatient codes			First 9 inpatient + outpatient codes		
	Readmissions, Risk-adjusted	Observation stays, Risk-adjusted	ED visits, Risk-adjusted	Readmissions, Risk-adjusted	Observation stays, Risk-adjusted	ED visits, Risk-adjusted
Pre-HRRP	-0.009 [-0.024,0.006]	0.007 [0.004,0.011]	0.001 [-0.005,0.007]	-0.010 [-0.024,0.004]	0.006 [0.003,0.010]	0.000 [-0.006,0.006]
HRRP anticipation	-0.083 [-0.094,-0.073]	0.014 [0.011,0.016]	-0.001 [-0.005,0.003]	-0.056 [-0.065,-0.046]	0.017 [0.015,0.020]	0.006 [0.002,0.010]
HRRP penalty	-0.029 [-0.036,-0.022]	0.011 [0.009,0.012]	0.007 [0.004,0.010]	-0.042 [-0.049,-0.036]	0.009 [0.007,0.010]	0.003 [0.000,0.006]
Change: Pre-HRRP to HRRP anticipation	-0.074 [-0.097,-0.051]	0.006 [0.001,0.012]	-0.002 [-0.011,0.007]	-0.046 [-0.067,-0.024]	0.011 [0.005,0.016]	0.006 [-0.003,0.015]
	<0.001	0.02	0.64	<0.001	<0.001	0.20
Change: HRRP anticipation to HRRP penalty	0.054 [0.039,0.070]	-0.003 [-0.007,0.001]	0.008 [0.002,0.015]	0.013 [-0.001,0.027]	-0.008 [-0.012,-0.005]	-0.003 [-0.009,0.003]
	<0.001	0.11	0.008	0.08	<0.001	0.32

eTable 8: Acute Myocardial Infarction - Changes in Trends of Post-discharge Acute Care Use Across Risk Adjustment Strategies: Values represent slopes of change in monthly rates during the 3 periods relative to the HRRP and changes in these slopes at the announcement and implementation of Hospital Readmissions Reduction Program (HRRP), in interrupted time series models.

	All inpatient + outpatient codes			First 9 inpatient + outpatient codes		
	Readmissions, Risk-adjusted	Observation stays, Risk-adjusted	ED visits, Risk-adjusted	Readmissions, Risk-adjusted	Observation stays, Risk-adjusted	ED visits, Risk-adjusted
Pre-HRRP	-0.003 [-0.018,0.012]	0.011 [0.005,0.018]	0.001 [-0.008,0.010]	-0.001 [-0.016,0.013]	0.011 [0.005,0.018]	0.001 [-0.009,0.010]
HRRP anticipation	-0.067 [-0.077,-0.057]	0.020 [0.016,0.025]	0.006 [-0.000,0.013]	-0.046 [-0.056,-0.036]	0.022 [0.018,0.027]	0.008 [0.002,0.014]
HRRP penalty	-0.027 [-0.033,-0.020]	0.019 [0.016,0.022]	0.018 [0.014,0.022]	-0.035 [-0.042,-0.029]	0.018 [0.016,0.021]	0.015 [0.011,0.019]
Change: Pre-HRRP to HRRP anticipation	-0.063 [-0.086,-0.041]	0.009 [-0.001,0.019]	0.005 [-0.009,0.019]	-0.044 [-0.067,-0.022]	0.011 [0.001,0.021]	0.007 [-0.007,0.021]
	<0.001	0.07	0.49	<0.001	0.03	0.32
Change: HRRP anticipation to HRRP penalty	0.040 [0.025,0.055]	-0.002 [-0.008,0.005]	0.012 [0.002,0.021]	0.011 [-0.004,0.026]	-0.004 [-0.010,0.003]	0.007 [-0.002,0.017]
	<0.001	0.62	0.02	0.16	0.26	0.14

eTable 9: Pneumonia - Changes in Trends of Post-discharge Acute Care Use Across Risk Adjustment Strategies: Values represent slopes of change in monthly rates during the 3 periods relative to the HRRP and changes in these slopes at the announcement and implementation of Hospital Readmissions Reduction Program (HRRP), in interrupted time series models.

	All inpatient + outpatient codes			First 9 inpatient + outpatient codes		
	Readmissions, Risk-adjusted	Observation stays, Risk-adjusted	ED visits, Risk-adjusted	Readmissions, Risk-adjusted	Observation stays, Risk-adjusted	ED visits, Risk-adjusted
Pre-HRRP	-0.001 [-0.013,0.011]	0.008 [0.005,0.011]	0.004 [-0.002,0.010]	-0.002 [-0.013,0.010]	0.008 [0.005,0.011]	0.004 [-0.003,0.010]
HRRP anticipation	-0.051 [-0.059,-0.042]	0.011 [0.009,0.013]	-0.002 [-0.007,0.002]	-0.032 [-0.040,-0.023]	0.013 [0.011,0.015]	0.004 [-0.000,0.009]
HRRP penalty	-0.029 [-0.035,-0.022]	0.008 [0.006,0.009]	0.011 [0.008,0.014]	-0.037 [-0.043,-0.032]	0.007 [0.005,0.009]	0.008 [0.005,0.012]
Change: Pre-HRRP to HRRP anticipation	-0.049 [-0.068,-0.031]	0.002 [-0.002,0.007]	-0.006 [-0.016,0.004]	-0.030 [-0.048,-0.012]	0.005 [0.000,0.010]	0.001 [-0.009,0.011]
	<0.001	0.34	0.21	0.002	0.03	0.89
Change: HRRP anticipation to HRRP penalty	0.022 [0.009,0.035]	-0.003 [-0.006,0.000]	0.013 [0.006,0.020]	-0.006 [-0.019,0.007]	-0.006 [-0.009,-0.003]	0.004 [-0.003,0.011]
	0.001	0.08	<0.001	0.37	<0.001	0.29

eTable 10: Heart Failure - Changes in Trends of Post-discharge Mortality Based on Acute Care

Use: Values represent slopes of change in monthly rates during the 3 periods relative to the HRRP and changes in these slopes at the announcement and implementation of Hospital Readmissions Reduction Program (HRRP), in interrupted time series models.

Unadjusted				
	Death + Readmission	Death + OBS, No readmission	Death + ED visit, No readmission/OBS	Death, No readmission/OBS/ ED visit
Pre-HRRP	-0.001 [-0.007,0.005]	0.000 [-0.000,0.001]	-0.000 [-0.002,0.002]	0.015 [0.007,0.024]
HRRP anticipation	0.001 [-0.003,0.005]	0.001 [0.001,0.001]	0.001 [0.000,0.003]	0.023 [0.017,0.029]
HRRP penalty	-0.002 [-0.004,0.001]	0.001 [0.001,0.001]	-0.001 [-0.002,0.000]	0.003 [-0.001,0.007]
Change: Pre- HRRP to HRRP anticipation	0.002 [-0.007,0.011]	0.001 [-0.000,0.001]	0.002 [-0.001,0.005]	0.008 [-0.005,0.021]
	0.69	0.17	0.24	0.24
Change: HRRP anticipation to HRRP penalty Observations	-0.003 [-0.009,0.004]	0.000 [-0.001,0.001]	-0.002 [-0.004,-0.000]	-0.020 [-0.029,-0.011]
	0.39	0.97	0.03	<0.001
Risk-adjusted				
	Death + Readmission	Death + OBS, No readmission	Death + ED visit, No readmission/OBS	Death, No readmission/OBS/ D visit
Pre-HRRP	-0.005 [-0.009,-0.000]	0.000 [-0.000,0.001]	-0.001 [-0.003,0.001]	0.009 [0.003,0.015]
HRRP anticipation	-0.004 [-0.008,-0.001]	0.001 [0.000,0.001]	0.000 [-0.001,0.002]	0.011 [0.007,0.016]
HRRP penalty	-0.002 [-0.004,0.001]	0.001 [0.000,0.001]	-0.001 [-0.001,0.000]	0.002 [-0.000,0.005]
Change: Pre- HRRP to HRRP anticipation	0.000 [-0.007,0.007]	0.000 [-0.000,0.001]	0.001 [-0.001,0.004]	0.003 [-0.007,0.012]
	0.94	0.29	0.34	0.59
Change: HRRP anticipation to HRRP penalty	0.003 [-0.002,0.008]	0.000 [-0.000,0.001]	-0.001 [-0.003,0.001]	-0.009 [-0.015,-0.003]
	0.23	0.85	0.24	0.005

eTable 11: Acute Myocardial Infarction - Changes in Trends of Post-discharge Mortality Based on Acute Care Use: Values represent slopes of change in monthly rates during the 3 periods relative to the HRRP and changes in these slopes at the announcement and implementation of Hospital Readmissions Reduction Program (HRRP), in interrupted time series models.

Unadjusted				
	Death + Readmission	Death + OBS, No readmission	Death + ED visit, No readmission/OBS	Death, No readmission/OBS/ED visit
Pre-HRRP	-0.003 [-0.009,0.004]	0.000 [-0.000,0.001]	-0.001 [-0.004,0.002]	-0.011 [-0.021,-0.001]
HRRP anticipation	-0.009 [-0.014,-0.005]	0.000 [-0.000,0.001]	-0.001 [-0.003,0.001]	0.002 [-0.005,0.009]
HRRP penalty	-0.005 [-0.008,-0.002]	0.001 [0.000,0.001]	-0.001 [-0.002,0.000]	-0.012 [-0.016,-0.007]
Change: Pre-HRRP to HRRP anticipation	-0.006 [-0.016,0.004]	-0.000 [-0.001,0.001]	0.000 [-0.004,0.004]	0.013 [-0.002,0.029]
	0.21	0.87	0.98	0.09
Change: HRRP anticipation to HRRP penalty	0.004 [-0.002,0.011]	0.001 [-0.000,0.001]	-0.000 [-0.003,0.003]	-0.014 [-0.024,-0.004]
Observations	0.22	0.16	0.97	0.008
Risk-adjusted				
	Death + Readmission	Death + OBS, No readmission	Death + ED visit, No readmission/OBS	Death, No readmission/OBS/ED visit
Pre-HRRP	-0.000 [-0.005,0.005]	0.000 [-0.001,0.001]	-0.001 [-0.003,0.002]	-0.005 [-0.012,0.001]
HRRP anticipation	-0.010 [-0.014,-0.007]	0.000 [-0.000,0.001]	-0.001 [-0.003,0.000]	0.007 [0.003,0.011]
HRRP penalty	-0.002 [-0.004,0.001]	0.001 [0.000,0.001]	-0.001 [-0.002,0.001]	-0.005 [-0.007,-0.002]
Change: Pre-HRRP to HRRP anticipation	-0.010 [-0.018,-0.002]	-0.000 [-0.001,0.001]	-0.001 [-0.005,0.003]	0.013 [0.003,0.022]
	0.01	0.97	0.74	0.01
Change: HRRP anticipation to HRRP penalty	0.009 [0.003,0.014]	0.001 [-0.000,0.001]	0.001 [-0.002,0.004]	-0.012 [-0.018,-0.005]
	0.001	0.13	0.52	<0.001

eTable 12: Pneumonia - Changes in Trends of Post-discharge Mortality Based on Acute Care Use: Values represent slopes of change in monthly rates during the 3 periods relative to the HRRP and changes in these slopes at the announcement and implementation of Hospital Readmissions Reduction Program (HRRP), in interrupted time series models.

Unadjusted				
	Death + Readmission	Death + OBS, No readmission	Death + ED visit, No readmission/OBS	Death, No readmission/OBS/ ED visit
Pre-HRRP	0.004 [-0.001,0.009]	0.000 [-0.000,0.001]	-0.000 [-0.002,0.001]	0.014 [0.006,0.022]
HRRP anticipation	-0.005 [-0.009,-0.002]	0.001 [0.000,0.001]	0.001 [-0.000,0.002]	0.011 [0.005,0.017]
HRRP penalty	-0.004 [-0.007,-0.002]	0.000 [0.000,0.001]	-0.001 [-0.002,-0.000]	-0.007 [-0.011,-0.003]
Change: Pre- HRRP to HRRP anticipation	-0.009 [-0.017,-0.002]	0.001 [-0.000,0.001]	0.001 [-0.002,0.004]	-0.003 [-0.015,0.010]
	0.02	0.24	0.46	0.66
Change: HRRP anticipation to HRRP penalty Observations	0.001 [-0.004,0.007]	-0.000 [-0.001,0.000]	-0.002 [-0.004,-0.000]	-0.018 [-0.026,-0.009]
	0.67	0.31	0.04	<0.001
Risk-adjusted				
	Death + Readmission	Death + OBS, No readmission	Death + ED visit, No readmission/OBS	Death, No readmission/OBS/ D visit
Pre-HRRP	0.001 [-0.003,0.005]	0.000 [-0.000,0.001]	-0.001 [-0.002,0.001]	0.009 [0.004,0.014]
HRRP anticipation	-0.008 [-0.011,-0.005]	0.001 [0.000,0.001]	-0.000 [-0.001,0.001]	0.003 [-0.000,0.007]
HRRP penalty	-0.002 [-0.004,-0.000]	0.000 [0.000,0.001]	-0.001 [-0.001,0.000]	-0.003 [-0.005,-0.000]
Change: Pre- HRRP to HRRP anticipation	-0.009 [-0.015,-0.003]	0.000 [-0.000,0.001]	0.001 [-0.002,0.003]	-0.005 [-0.013,0.003]
	0.01	0.23	0.51	0.19
Change: HRRP anticipation to HRRP penalty	0.006 [0.002,0.010]	-0.000 [-0.001,0.000]	-0.001 [-0.002,0.001]	-0.006 [-0.012,-0.001]
	0.01	0.37	0.50	0.02

eTable 13: Heart Failure - Changes in Trends of Post-discharge Mortality Based on Acute Care Use, Across Risk-Adjustment Strategies: Values represent slopes of change in monthly rates during the 3 periods relative to the HRRP and changes in these slopes at the announcement and implementation of Hospital Readmissions Reduction Program (HRRP), in interrupted time series models.

Risk-adjusted, secondary cohort, all inpatient + outpatient codes				
	Death + Readmission	Death + OBS, No readmission	Death + ED visit, No readmission/OBS	Death, No readmission/OBS/ED visit
Pre-HRRP	-0.005 [-0.010,-0.000]	0.000 [-0.000,0.001]	-0.001 [-0.003,0.001]	0.009 [0.003,0.015]
HRRP anticipation	-0.002 [-0.005,0.001]	0.001 [0.000,0.001]	0.001 [-0.000,0.002]	0.015 [0.010,0.019]
HRRP penalty	-0.005 [-0.007,-0.002]	0.001 [0.000,0.001]	-0.001 [-0.002,-0.000]	-0.002 [-0.005,0.001]
Change: Pre-HRRP to HRRP anticipation	0.003 [-0.005,0.010]	0.000 [-0.000,0.001]	0.002 [-0.001,0.004]	0.006 [-0.004,0.016]
	0.47	0.29	0.21	0.23
Change: HRRP anticipation to HRRP penalty	-0.002 [-0.007,0.002]	-0.000 [-0.001,0.000]	-0.002 [-0.004,-0.000]	-0.017 [-0.024,-0.011]
Observations	0.33	0.78	0.04	<0.001
Risk-adjusted, secondary cohort, first 9 inpatient + outpatient codes				
	Death + Readmission	Death + OBS, No readmission	Death + ED visit, No readmission/OBS	Death, No readmission/OBS/ED visit
Pre-HRRP	-0.005 [-0.010,-0.001]	0.000 [-0.000,0.001]	-0.001 [-0.003,0.001]	0.008 [0.002,0.014]
HRRP anticipation	0.001 [-0.002,0.004]	0.001 [0.001,0.001]	0.001 [0.000,0.002]	0.020 [0.015,0.024]
HRRP penalty	-0.007 [-0.009,-0.005]	0.001 [0.000,0.001]	-0.002 [-0.002,-0.001]	-0.007 [-0.009,-0.004]
Change: Pre-HRRP to HRRP anticipation	0.006 [-0.001,0.013]	0.001 [-0.000,0.002]	0.002 [-0.000,0.005]	0.012 [0.002,0.021]
	0.09	0.11	0.09	0.02
Change: HRRP anticipation to HRRP penalty	-0.008 [-0.012,-0.003]	-0.000 [-0.001,0.000]	-0.003 [-0.005,-0.001]	-0.026 [-0.033,-0.020]
Observations	0.002	0.15	0.003	<0.001

eTable 14: Acute Myocardial Infarction - Changes in Trends of Post-discharge Mortality Based on Acute Care Use, Across Risk-Adjustment Strategies: Values represent slopes of change in monthly rates during the 3 periods relative to the HRRP and changes in these slopes at the announcement and implementation of Hospital Readmissions Reduction Program (HRRP), in interrupted time series models.

Risk-adjusted, secondary cohort, all inpatient + outpatient codes				
	Death + Readmission	Death + OBS, No readmission	Death + ED visit, No readmission/OBS	Death, No readmission/OBS/ ED visit
Pre-HRRP	-0.001 [-0.006,0.005]	0.000 [-0.001,0.001]	-0.001 [-0.004,0.002]	-0.006 [-0.013,0.000]
HRRP anticipation	-0.009 [-0.013,-0.006]	0.000 [-0.000,0.001]	-0.001 [-0.003,0.001]	0.010 [0.005,0.014]
HRRP penalty	-0.003 [-0.005,-0.001]	0.001 [0.000,0.001]	-0.001 [-0.002,0.000]	-0.007 [-0.010,-0.004]
Change: Pre- HRRP to HRRP anticipation	-0.009 [-0.017,-0.001]	0.000 [-0.001,0.001]	-0.000 [-0.004,0.004]	0.016 [0.006,0.026]
	0.03	0.91	0.94	0.003
Change: HRRP anticipation to HRRP penalty Observations	0.006 [0.001,0.012]	0.000 [-0.000,0.001]	-0.000 [-0.003,0.003]	-0.017 [-0.024,-0.010]
	0.02	0.26	0.98	<0.001
Risk-adjusted, secondary cohort, first 9 inpatient + outpatient codes				
	Death + Readmission	Death + OBS, No readmission	Death + ED visit, No readmission/OBS	Death, No readmission/OBS/ D visit
Pre-HRRP	-0.000 [-0.005,0.005]	0.000 [-0.001,0.001]	-0.001 [-0.004,0.002]	-0.006 [-0.013,0.000]
HRRP anticipation	-0.007 [-0.010,-0.003]	0.000 [-0.000,0.001]	-0.001 [-0.002,0.001]	0.010 [0.005,0.015]
HRRP penalty	-0.005 [-0.007,-0.002]	0.001 [0.000,0.001]	-0.002 [-0.003,-0.000]	-0.012 [-0.015,-0.009]
Change: Pre- HRRP to HRRP anticipation	-0.006 [-0.014,0.002]	0.000 [-0.001,0.001]	0.000 [-0.004,0.004]	0.017 [0.006,0.027]
	0.12	0.80	0.88	0.002
Change: HRRP anticipation to HRRP penalty	0.002 [-0.003,0.007]	0.000 [-0.000,0.001]	-0.001 [-0.004,0.002]	-0.022 [-0.029,-0.015]
	0.51	0.42	0.43	<0.001

eTable 15: Pneumonia - Changes in Trends of Post-discharge Mortality Based on Acute Care Use, Across Risk-Adjustment Strategies: Values represent slopes of change in monthly rates during the 3 periods relative to the HRRP and changes in these slopes at the announcement and implementation of Hospital Readmissions Reduction Program (HRRP), in interrupted time series models.

Risk-adjusted, secondary cohort, all inpatient + outpatient codes				
	Death + Readmission	Death + OBS, No readmission	Death + ED visit, No readmission/OBS	Death, No readmission/OBS/ED visit
Pre-HRRP	-0.000 [-0.004,0.004]	0.000 [-0.000,0.001]	-0.001 [-0.002,0.001]	0.009 [0.004,0.015]
HRRP anticipation	-0.006 [-0.009,-0.003]	0.001 [0.000,0.001]	-0.000 [-0.001,0.001]	0.005 [0.002,0.009]
HRRP penalty	-0.005 [-0.008,-0.003]	0.000 [0.000,0.001]	-0.001 [-0.002,-0.000]	-0.006 [-0.008,-0.003]
Change: Pre-HRRP to HRRP anticipation	-0.006 [-0.012,0.001]	0.000 [-0.000,0.001]	0.001 [-0.002,0.003]	-0.004 [-0.012,0.004]
	0.08	0.25	0.58	0.35
Change: HRRP anticipation to HRRP penalty	0.000 [-0.004,0.005]	-0.000 [-0.001,0.000]	-0.001 [-0.003,0.001]	-0.011 [-0.017,-0.005]
Observations	0.85	0.29	0.28	<0.001
Risk-adjusted, secondary cohort, first 9 inpatient + outpatient codes				
	Death + Readmission	Death + OBS, No readmission	Death + ED visit, No readmission/OBS	Death, No readmission/OBS/ED visit
Pre-HRRP	-0.000 [-0.004,0.004]	0.000 [-0.000,0.001]	-0.001 [-0.002,0.001]	0.009 [0.004,0.014]
HRRP anticipation	-0.003 [-0.006,-0.000]	0.001 [0.000,0.001]	0.000 [-0.001,0.002]	0.009 [0.006,0.013]
HRRP penalty	-0.007 [-0.009,-0.005]	0.000 [0.000,0.001]	-0.001 [-0.002,-0.001]	-0.009 [-0.012,-0.007]
Change: Pre-HRRP to HRRP anticipation	-0.003 [-0.010,0.003]	0.001 [-0.000,0.001]	0.001 [-0.001,0.004]	0.000 [-0.008,0.008]
	0.34	0.15	0.33	0.94
Change: HRRP anticipation to HRRP penalty	-0.004 [-0.009,0.001]	-0.001 [-0.001,0.000]	-0.002 [-0.004,-0.000]	-0.019 [-0.024,-0.013]
	0.08	0.09	0.04	<0.001

eTable 16: Characteristics of patients with heart failure discharged alive, overall and across post-discharge acute care use settings.

	Overall	Readmission	Observation stay	ED visit	No readmission/ observation/ED
Number of patients	3,772,924	850,236	65,721	240,974	2,615,993
Demographics					
Age, mean (SD), years	80.8 (8.3)	82.6 (8)	80.4 (8.2)	80.6 (8.3)	80.9 (8.3)
Male sex	46.3	46.7	44.8	45.6	46.2
Health conditions					
Cardio-respiratory failure and shock (CC 79)	27.5	34.4	29.2	29.0	25.2
Dementia (CC 49, 50)	23.1	24.8	24.1	26.1	22.3
Hemiplegia, paralysis, functional disability (CC 67 to 69, 100 to 102, 177, 178)	7.8	9.4	8.2	8.7	7.2
Delirium and encephalopathy (CC 48)	3.1	3.4	2.6	3.1	3.0
Metastatic cancer and acute leukemia (CC 7)	2.2	2.7	2.2	2.2	2.1
Chronic skin ulcer (CC 148, 149)	14.3	17.2	12.9	14.8	13.3
Protein-calorie malnutrition (CC 21)	9.2	11.5	8.8	9.7	8.4
Care patterns					
Intensive care unit use	48.1	49.2	47.4	47.2	47.9
Palliative care consultation	9.1	7.2	8.1	8.4	9.8
Major operative procedures	4.9	4.8	4.7	5.0	5.0
Discharge disposition					
Skilled nursing facility	20.5	24.2	16.3	21.4	19.3
Hospice	3.6	0.6	0.8	1.2	4.9
Home health care	23.0	26.2	26.8	25.7	21.7
Long-term acute-care facility	0.8	0.6	0.3	0.4	0.9

ED: emergency department, SD: standard deviation

eTable 17: Characteristics of patients with acute myocardial infarction discharged alive, overall and across post-discharge acute care use settings.

	Overall	Readmission	Observation stay	ED visit	No readmission/ observation/ED
Number of patients	1,570,113	274,142	40,800	107,164	1,148,007
Demographics					
Age, mean (SD), years	78.6 (8.3)	82.5 (8.2)	77.9 (8)	78.5 (8.2)	78.4 (8.3)
Male sex	52.2	49.1	48.8	50.6	53.3
Health conditions					
Dementia (CC 49, 50)	18.7	22.5	17.2	20.8	17.7
Hemiplegia, paralysis, functional disability (CC 67 to 69, 100 to 102, 177, 178)	6.0	8.5	5.8	6.6	5.4
Delirium and encephalopathy (CC 48)	4.0	5.1	3.0	4.0	3.8
Metastatic cancer and acute leukemia (CC 7)	2.1	2.8	1.8	2.1	1.9
Chronic skin ulcer (CC 148, 149)	7.7	11.2	6.5	8.0	6.9
Protein-calorie malnutrition (CC 21)	5.8	8.6	4.5	6.0	5.2
Care patterns					
Intensive care unit use	72.9	73.7	72.9	73.6	72.7
Palliative care consultation	7.2	6.8	5.7	6.5	7.4
Major operative procedures	48.4	41.1	54.3	49.7	49.9
Discharge disposition					
Skilled nursing facility	17.7	25.6	12.7	18.6	15.8
Hospice	3.2	0.5	0.4	0.8	4.1
Home health care	15.8	20.6	16.3	17.9	14.4
Long-term acute-care facility	0.9	1.0	0.3	0.4	1.0

ED: emergency department, SD: standard deviation

eTable 18: Characteristics of patients with pneumonia discharged alive, overall and across post-discharge acute care use settings.

	Overall	Readmission	Observation stay	ED visit	No readmission/ observation/ED
Number of patients	3131162	537276	42762	196781	2354343
Demographics					
Age, mean (SD), years	80.2 (8.3)	79.9 (8.2)	80.1 (8.3)	80.2 (8.4)	80.3 (8.4)
Male sex	46.4	48.3	44.2	45.2	46.1
Health conditions					
Cardio-respiratory failure and shock (CC 79)	21.8	31.2	24.0	24.3	19.4
Dementia (CC 49, 50)	29.8	32.1	31.4	34.1	28.9
Hemiplegia, paralysis, functional disability (CC 67 to 69, 100 to 102, 177, 178)	8.3	10.7	9.0	9.6	7.6
Delirium and encephalopathy (CC 48)	5.6	6.2	6.2	6.0	5.5
Metastatic cancer and acute leukemia (CC 7)	5.1	7.1	5.3	4.9	4.6
Chronic skin ulcer (CC 148, 149)	11.1	14.8	11.4	12.2	10.1
Protein-calorie malnutrition (CC 21)	12.1	16.4	12.4	13.0	11.0
Care patterns					
Intensive care unit use	28.3	32.9	28.5	27.6	27.3
Palliative care consultation	8.7	7.6	8.2	8.3	9.0
Major operative procedures	1.9	2.5	1.8	1.8	1.8
Discharge disposition					
Skilled nursing facility	5.1	6.3	6.2	5.9	4.7
Hospice	3.1	0.5	0.6	0.8	4.0
Home health care	17.0	20.7	22.4	19.8	15.8
Long-term acute-care facility	1.3	1.1	0.5	0.6	1.4

ED: emergency department, SD: standard deviation