

Supplementary Information

Brain network disruption predicts memory and attention deficits after surgical resection of glioma

Romero-Garcia R^{1, §,*}, Hart MG^{2,*}, Owen M¹, Assem M³, Coelho P⁴, McDonald A⁵, Woodberry E⁵, Price SJ², Burke GAA⁶, Santarius T^{2,7}, Erez Y³, Suckling J^{1,8,9}

* These authors contributed equally

1. Department of Psychiatry, University of Cambridge, 2. Department of Neurosurgery, Addenbrooke's Hospital, Cambridge, 3. MRC Cognition and Brain Sciences Unit, University of Cambridge, 4. Neurophys Limited, 5. Department of Neuropsychology, Cambridge University Hospitals NHS Foundation Trust, 6. Department of Paediatric Haematology, Oncology and Palliative Care, Addenbrooke's hospital, Cambridge 7. Physiology, Development and Neuroscience, University of Cambridge, 8. Behavioural and Clinical Neuroscience Institute, University of Cambridge; 9. Cambridge and Peterborough NHS Foundation Trust.

§ Correspondence to: Rafael Romero-Garcia PhD, University of Cambridge, Department of Psychiatry, Herchel Smith Building for Brain and Mind Sciences, Robinson Way, Cambridge CB2 0SZ, UK Email: rr480@cam.ac.uk

Keywords: Brain Tumours, structural MRI, diffusion MRI, Neurosurgery, Brain Networks, NODDI, Low-Grade Glioma, Cognitive function, memory, attention, patients

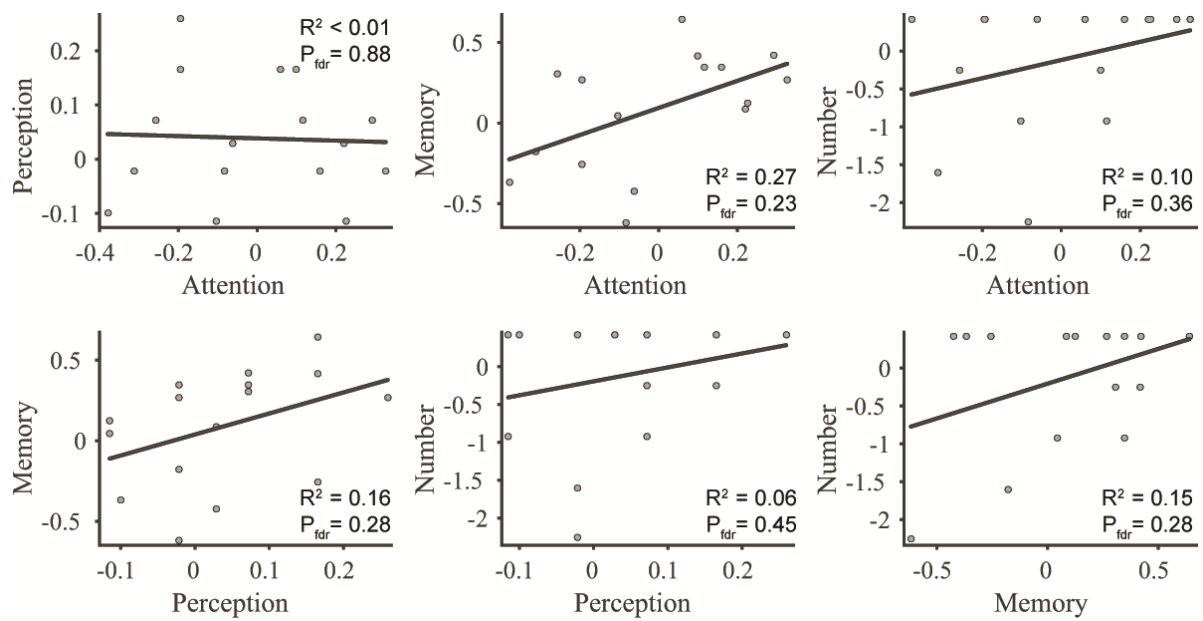


Figure S1. Associations of cognitive performance between each pair of domains (Attention, Perception, Memory and Number Processing).

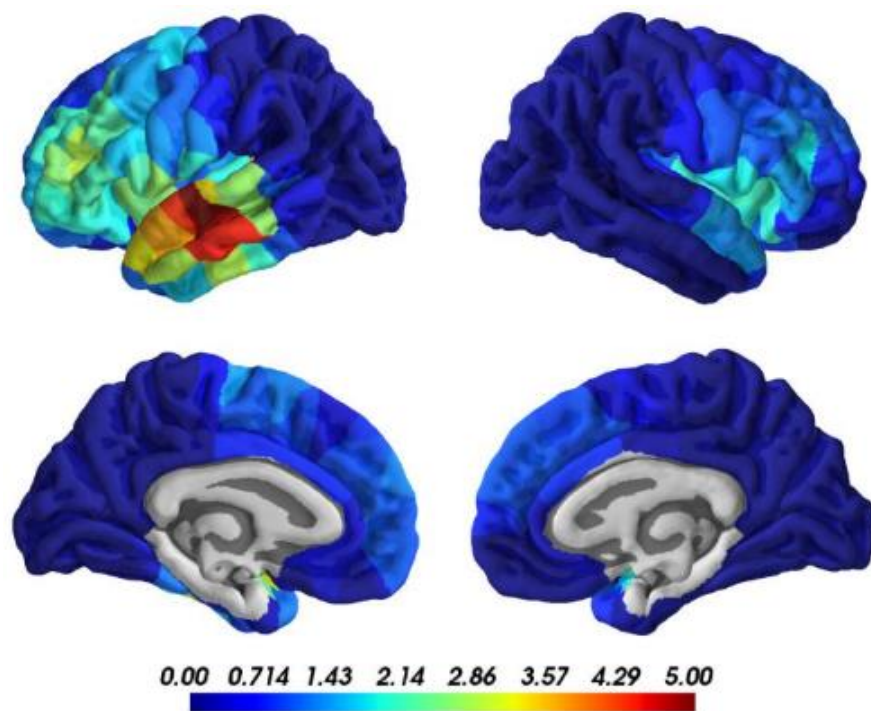


Figure S2. Tumour location in the cohort. Colour scale indicates the number of participants that had a tumour in a given cortical region. Cortical surface representations were plotted using BrainsForPublication v0.2.1 (<https://doi.org/10.5281/zenodo.1069156>).

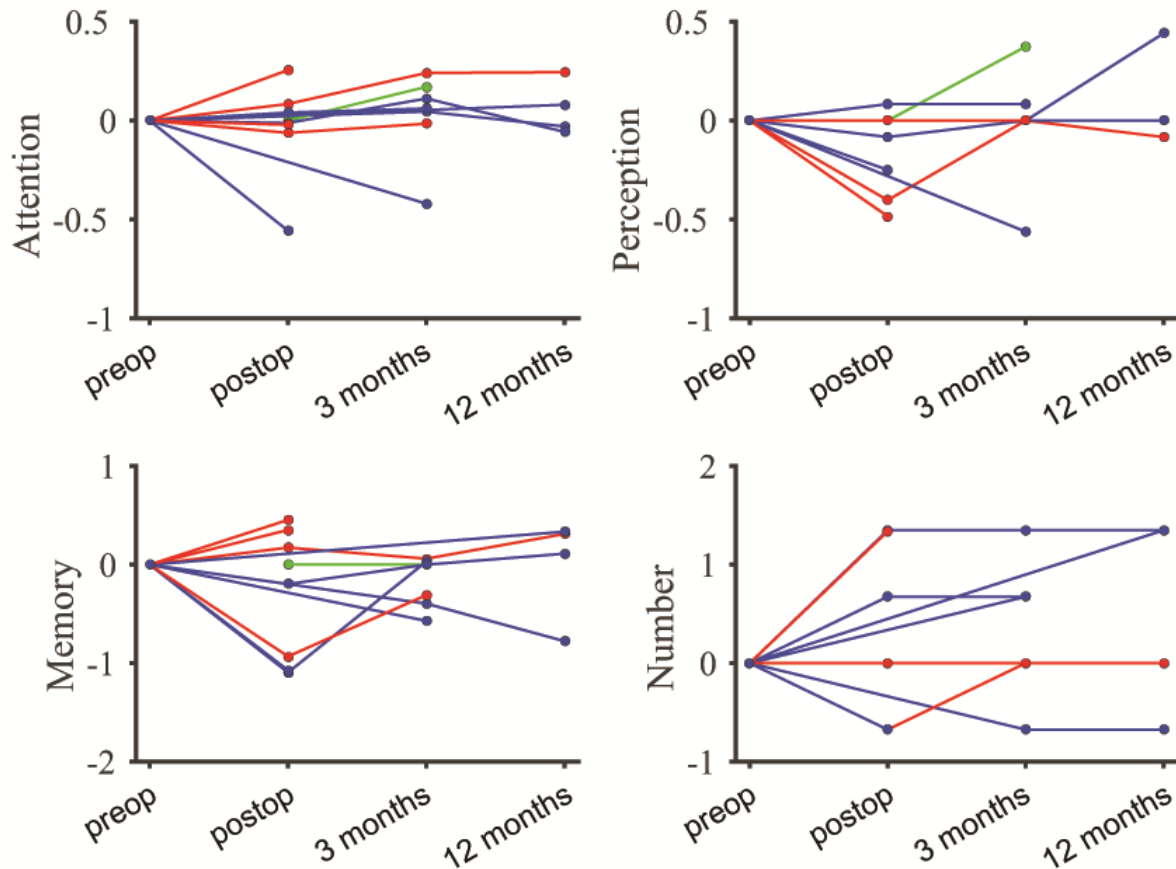


Figure S3. Patients' cognitive recovery trajectories coloured according to lesion location (frontal, blue; temporal, red; insular, green). There was no significant effect of tumour location in any of the four cognitive domains (Linear Mixed Effect Model: Attention, $P=0.48$; Perception, $P=0.61$; Memory, $P=0.26$; Number $P=0.50$).

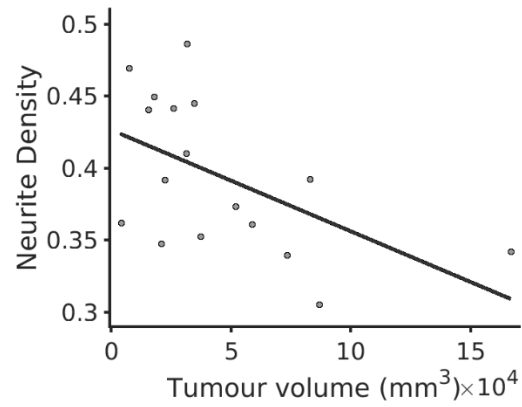


Figure S4. Association between total tumour volume and Neurite Density outside of the tumour ($R^2= 0.28$, $P=0.03$).