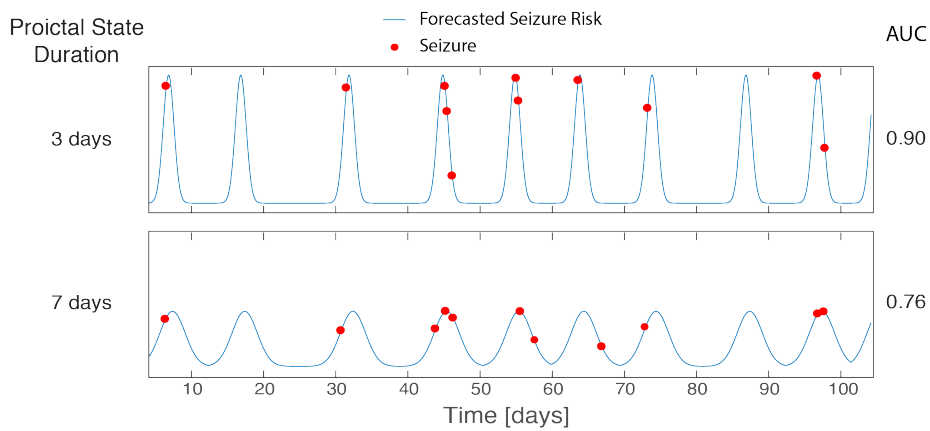
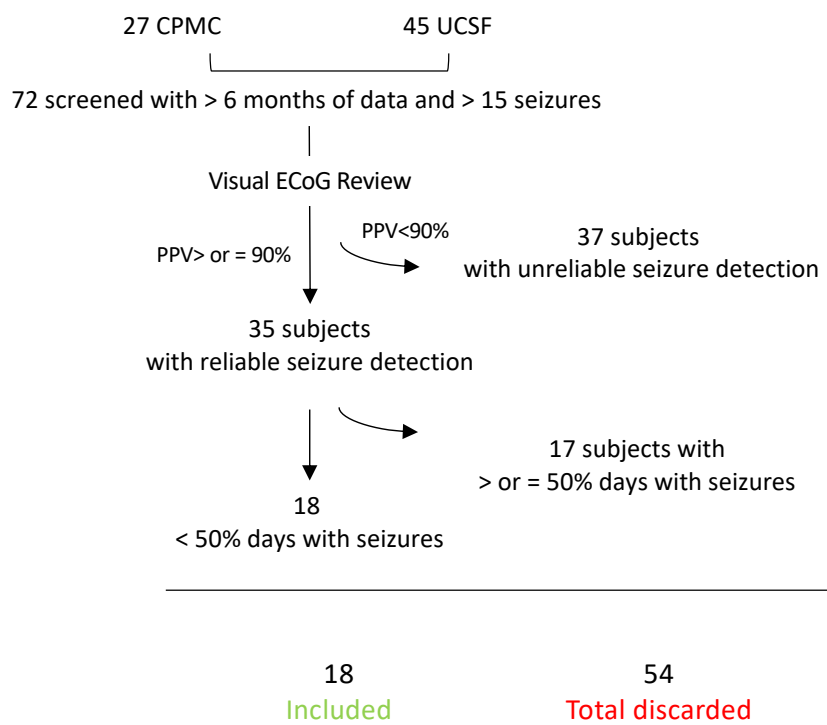


Forecasting seizure risk over days
Supplementary material

Proix et al.



Supplementary Fig. 1: **Metric of model performance depends on proictal state duration.** In these ideal simulated examples, blue line depicts forecasted seizure risk over 100 days with 9 recurrent pro-ictal states (High-Risk for seizures) at about 10 days intervals. The duration of each individual pro-ictal state is 3 (top) and 7 (bottom) days. Red dots show seizures, which occur stochastically when seizure risk is greater than zero. In both cases, all seizures occur during pro-ictal states (Sensitivity 100%) but their different durations result in different AUC STiW, as longer pro-ictal states increase proportion of time in warning. AUCs on the right were calculated for 1000 realizations of these ideal simulated forecasts with 40 seizures over one year. This example also illustrates that even an AUC around 0.7 can reflect a perfectly sensitive forecast.



Supplementary Fig. 2: Flow chart for subject selection

ID	Age	Sex	Laterality	Focus	Recording duration [days]	# days with seizures	# hours with seizures	% days with seizures	% hours with seizures
1	20	M	L	Temporo-cortical	286	45	57	15.8%	0.8%
2	54	F	Bl	Mesiotemporal	388	118	166	30.5%	1.8%
3	38	M	Bl	Mesiotemporal	441	127	187	28.8%	1.8%
4	30	F	L	Temporo-occipital	304	145	177	47.7%	2.4%
5	41	M	L	Temporo-cortical	871	28	34	3.2%	0.2%
6	52	M	Bl	Mesiotemporal	439	129	133	29.4%	1.3%
7	39	F	L	Mesiotemporal	541	99	112	18.3%	0.9%
8	36	M	L	Temporo-cortical	365	80	128	21.9%	1.5%
9	26	F	L	Mesiotemporal	227	19	31	8.4%	0.6%
10	55	M	Bl	Mesiotemporal	503	70	132	13.9%	1.1%
11	32	F	R	Occipital	447	164	250	36.7%	2.3%
12	51	M	Bl	Mesiotemporal	1049	231	352	22.0%	1.4%
13	69	F	Bl	Mesiotemporal	684	133	212	19.4%	1.3%
14	37	M	Bl	Mesiotemporal	375	63	82	16.9%	0.9%
15	37	F	R	Mesiotemporal	535	31	44	5.8%	0.3%
16	35	M	Bl	Mesiotemporal	280	30	33	10.7%	4.9%
17	23	F	Bl	Mesiotemporal	414	153	195	37.0%	2.0%
18	39	M	R	Mesiotemporal	942	290	569	30.8%	2.5%

Supplementary Table 1: **Subject characteristics**

Daily forecast					
ID	Recent seizures	Weekly distribution	Recent IEA	Ultradian	Multidien phases
1	0.68	0.55	0.63	0.66	0.73
2	0.58	0.64	0.59	0.60	0.74
3	0.56	0.57	0.58	0.57	0.58
4	0.62	0.58	0.53	0.59	0.59
5	0.49	0.51	0.62	0.54	0.97
6	0.62	0.62	0.53	0.56	0.65
7	0.48	0.46	0.63	0.55	0.87
8	0.42	0.47	0.60	0.51	0.73
9	0.54	0.49	0.54	0.69	0.84
10	0.47	0.55	0.55	0.42	0.85
11	0.66	0.65	0.61	0.65	0.69
12	0.60	0.50	0.63	0.60	0.70
13	0.55	0.49	0.61	0.59	0.68
14	0.64	0.60	0.61	0.62	0.69
15	0.62	0.45	0.74	0.66	0.88
16	0.62	0.54	0.62	0.46	0.80
17	0.59	0.60	0.65	0.61	0.73
18	0.56	0.58	0.65	0.59	0.65

Hourly forecast					
ID	Recent seizures	Circadian distribution	Recent IEA	Ultradian	Multidien phases
1	0.79	0.58	0.61	0.58	0.72
2	0.52	0.57	0.57	0.57	0.66
3	0.56	0.58	0.59	0.53	0.60
4	0.49	0.78	0.56	0.55	0.52
5	0.50	0.53	0.52	0.63	0.95
6	0.53	0.60	0.60	0.61	0.62
7	0.52	0.56	0.66	0.65	0.84
8	0.49	0.63	0.53	0.49	0.76
9	0.53	0.46	0.43	0.45	0.81
10	0.59	0.55	0.61	0.59	0.85
11	0.50	0.62	0.65	0.58	0.63
12	0.58	0.54	0.58	0.57	0.71
13	0.61	0.55	0.56	0.53	0.66
14	0.57	0.71	0.56	0.57	0.74
15	0.59	0.76	0.71	0.72	0.89
16	0.50	0.43	0.57	0.60	0.77
17	0.49	0.64	0.69	0.66	0.67
18	0.68	0.68	0.72	0.64	0.70

Supplementary Table 2: **Forecasting performances of the univariate models (AUC STiW)**

Daily forecast					
ID	AUC scores	Surrogate p-value	Sensitivity for 25% of time in warning daily forecast	Time in warning for 75% sensitivity daily forecast	Optimal sensitivity - time in warning daily forecast
1	0.68	0.010	0.39	0.43	0.70 - 0.35
2	0.73	0.005	0.57	0.50	0.65 - 0.32
3	0.60	0.210	0.37	0.61	0.54 - 0.38
4	0.59	0.368	0.36	0.62	0.57 - 0.39
5	0.95	0.005	0.90	0.03	0.90 - 0.12
6	0.67	0.025	0.53	0.60	0.55 - 0.25
7	0.86	0.005	0.85	0.17	0.92 - 0.27
8	0.73	0.005	0.58	0.43	0.55 - 0.15
9	0.71	0.115	0.57	0.40	0.86 - 0.40
10	0.77	0.005	0.70	0.33	0.73 - 0.26
11	0.70	0.005	0.54	0.47	0.54 - 0.24
12	0.70	0.005	0.51	0.45	0.65 - 0.36
13	0.68	0.005	0.47	0.50	0.64 - 0.30
14	0.77	0.005	0.68	0.46	0.68 - 0.24
15	0.90	0.005	0.90	0.10	0.90 - 0.16
16	0.77	0.015	0.57	0.28	0.79 - 0.28
17	0.73	0.005	0.65	0.42	0.66 - 0.26
18	0.68	0.005	0.45	0.45	0.74 - 0.43
Hourly forecast					
1	0.72	0.005	0.68	0.36	0.71 - 0.27
2	0.67	0.005	0.45	0.53	0.68 - 0.39
3	0.68	0.005	0.46	0.50	0.62 - 0.32
4	0.77	0.458	0.66	0.31	0.77 - 0.32
5	0.97	0.005	1.00	0.04	1.00 - 0.10
6	0.68	0.005	0.55	0.43	0.66 - 0.34
7	0.86	0.005	0.80	0.19	0.77 - 0.19
8	0.78	0.005	0.73	0.27	0.73 - 0.24
9	0.77	0.060	0.79	0.24	0.79 - 0.24
10	0.81	0.005	0.75	0.25	0.72 - 0.17
11	0.68	0.010	0.43	0.51	0.59 - 0.32
12	0.74	0.005	0.58	0.40	0.62 - 0.28
13	0.68	0.005	0.48	0.50	0.71 - 0.42
14	0.82	0.005	0.75	0.23	0.84 - 0.28
15	0.90	0.005	0.94	0.13	0.88 - 0.18
16	0.75	0.005	0.69	0.31	0.69 - 0.19
17	0.74	0.005	0.69	0.37	0.69 - 0.24
18	0.78	0.005	0.64	0.36	0.74 - 0.34

Supplementary Table 3: **Forecasting performances of the multivariate model**