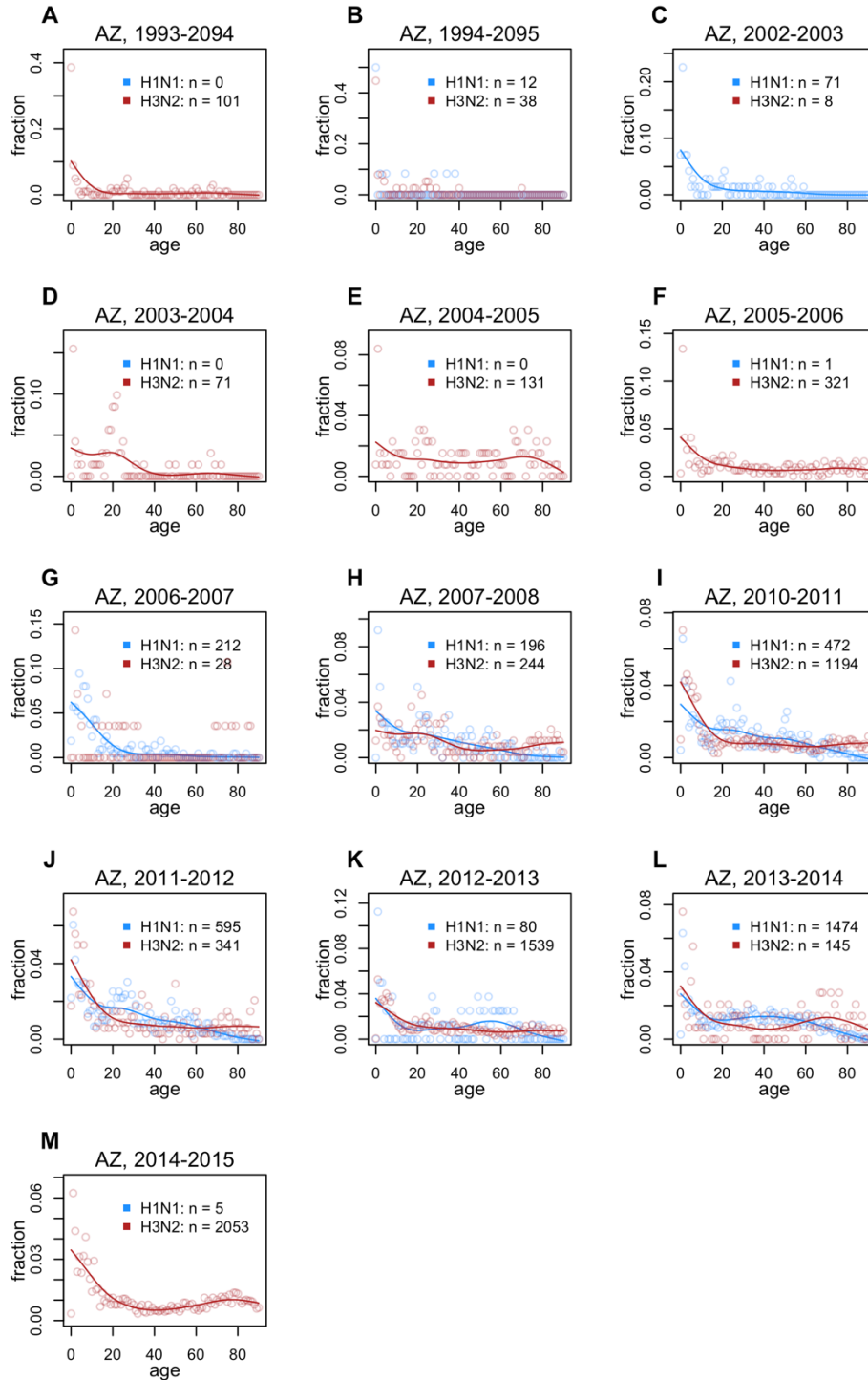
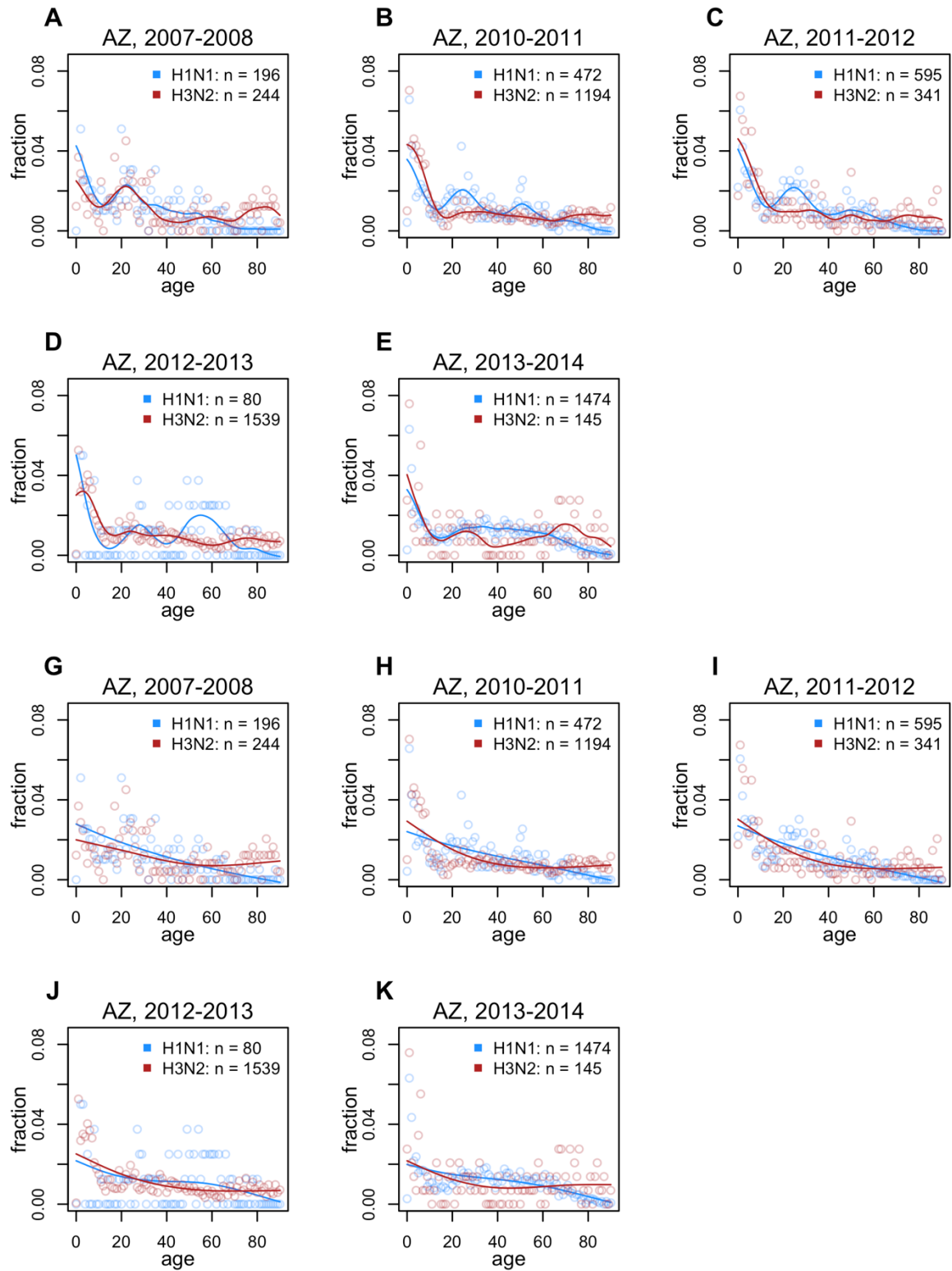


Supplementary Figures

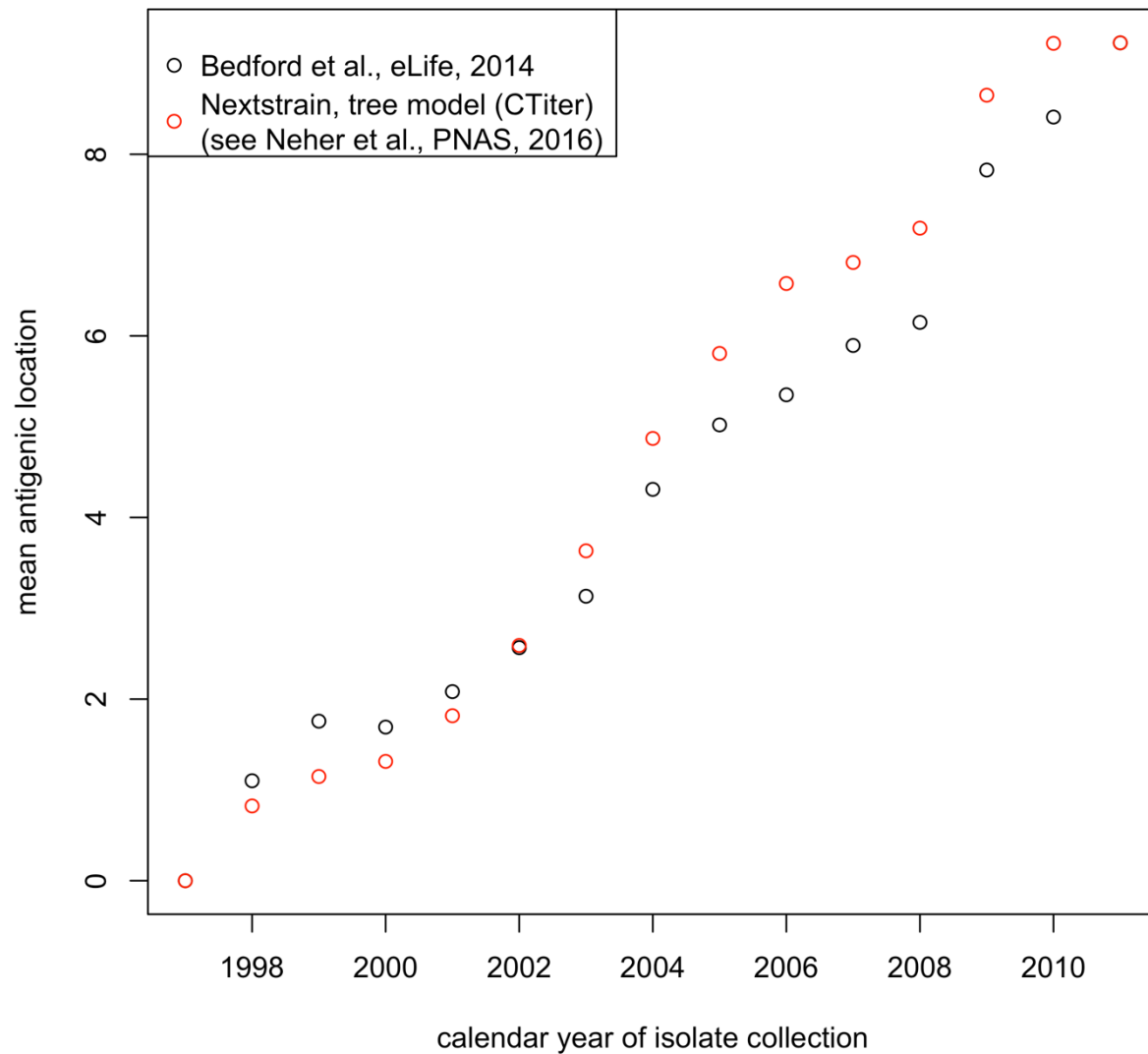


2

3 **Figure S1. ADHS age distributions, all seasons.** Supplement to *Fig. 2* showing observed age
4 distributions from all influenza seasons. Observed case fractions (points) were only plotted if 10 or more
5 cases of a given subtype were confirmed, to avoid extreme stretching of the y axis. Smoothing splines
6 were only plotted if 50 or more cases of a given subtype were observed, as fits to fewer data points would
7 not have been meaningful.



8
9 **Figure S2. Alternate smoothing parameters, AZDHS data.** Supplement to *Fig. 2*, with smoothing
10 parameters chosen to fit splines that are less (A-F), or more (G-L) smooth than the splines shown in the
11 main text. Differences between H1N1 and H3N2's age-specific impacts remain evident, especially in the
12 oldest cohorts, regardless of smoothness.
13



14
 15 **Figure S3. Comparison of rescaled antigenic distance estimates from the Bedford et al., and**
 16 **Nextstrain datasets.** Points represent average antigenic position of all isolates from a given calendar year.
 17