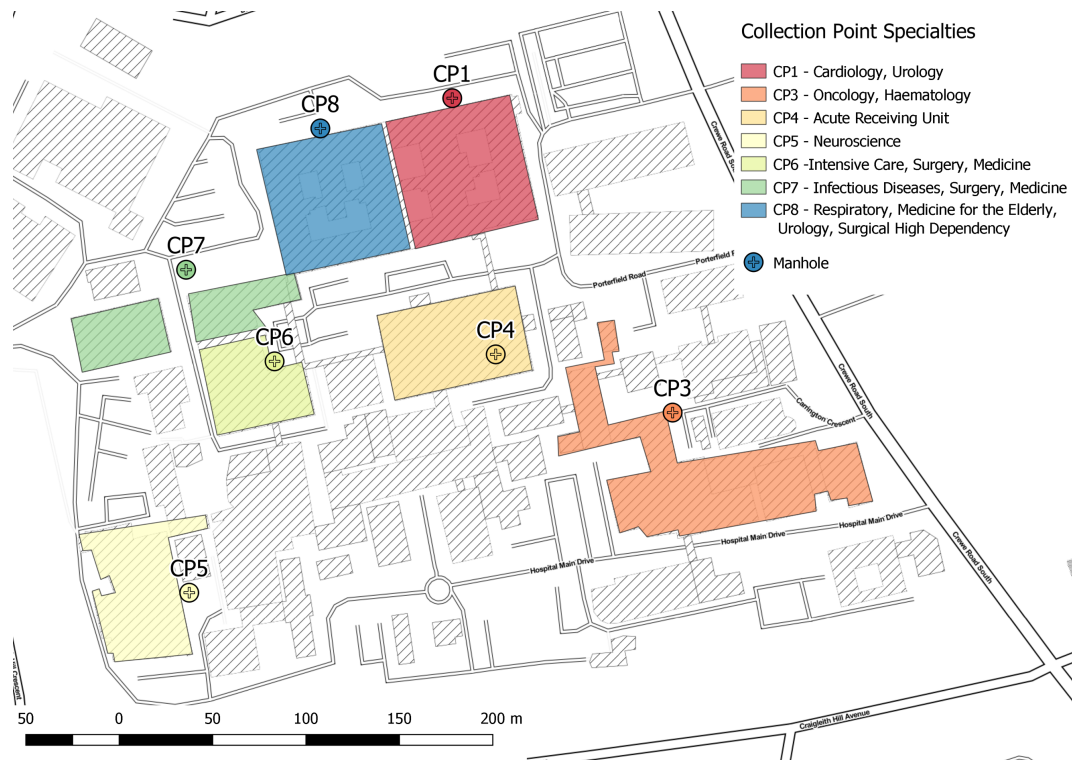
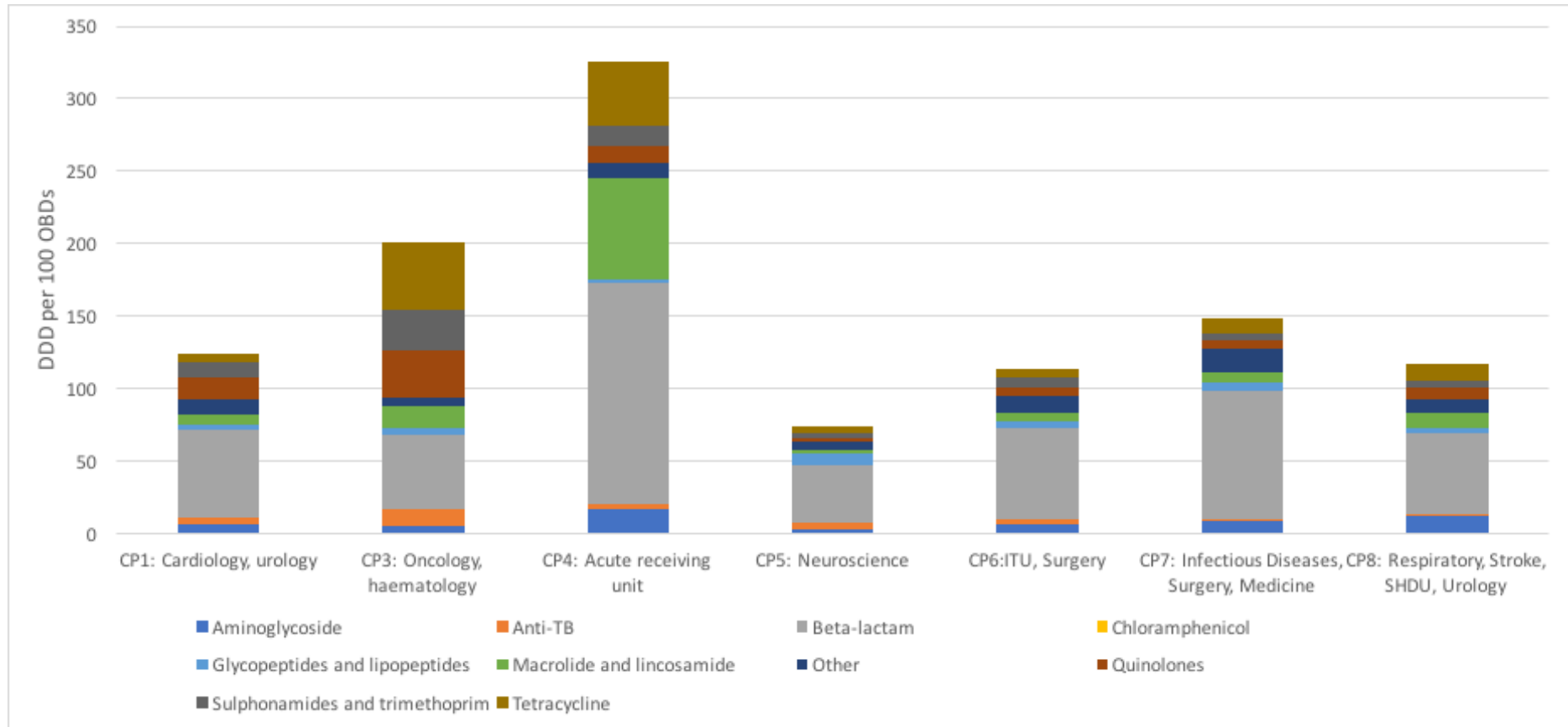


Supplementary Figures



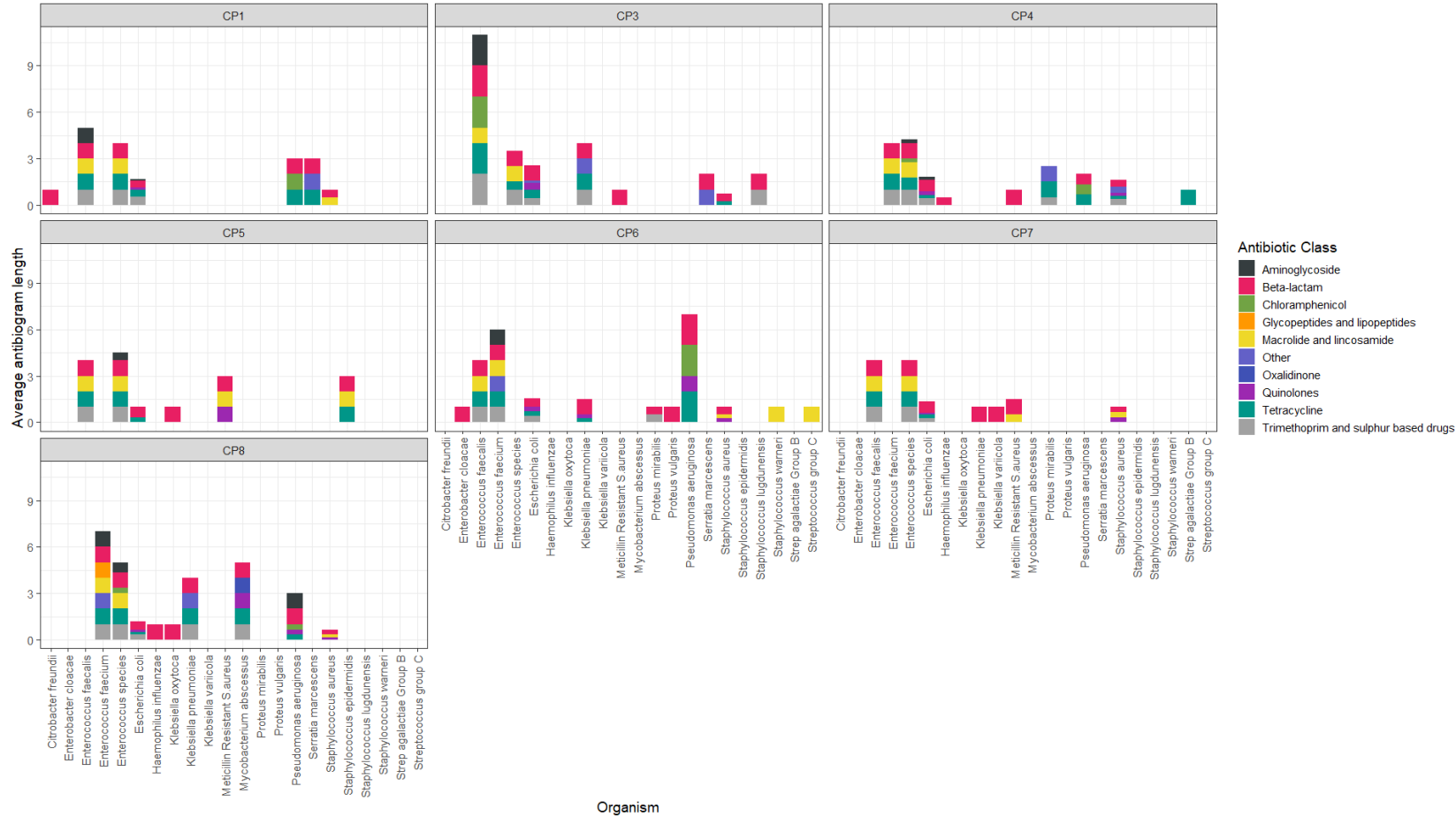
Supplementary Figure 1 Schemata of location of analysed wastewater Collection Points (CP) on tertiary hospital site. Hospital wastewater was sampled from indicated locations, which are the main clinical areas of the hospital site, over a 24-hour period using composite samplers. Shaded areas represent the drainage of the sampled manholes. CP4 was a manhole located underneath the hospital in a plant room.



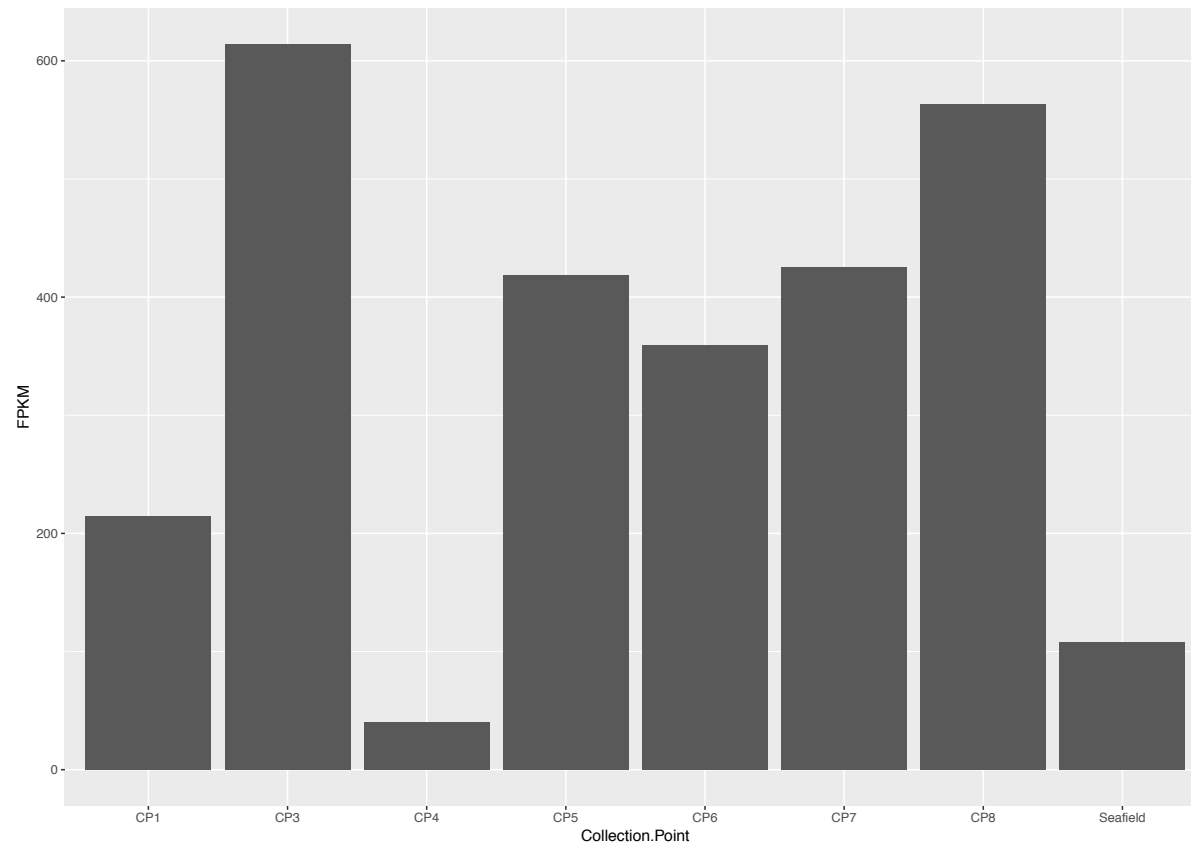
Supplementary Figure 2 Antimicrobial consumption by class over different hospital departments

Pharmacy issues to the wards within the collection points were collated over a three-month period and defined daily dose (DDD) per 100 occupied bed days (OBD) calculated to represent the antimicrobial consumption at each collection point.

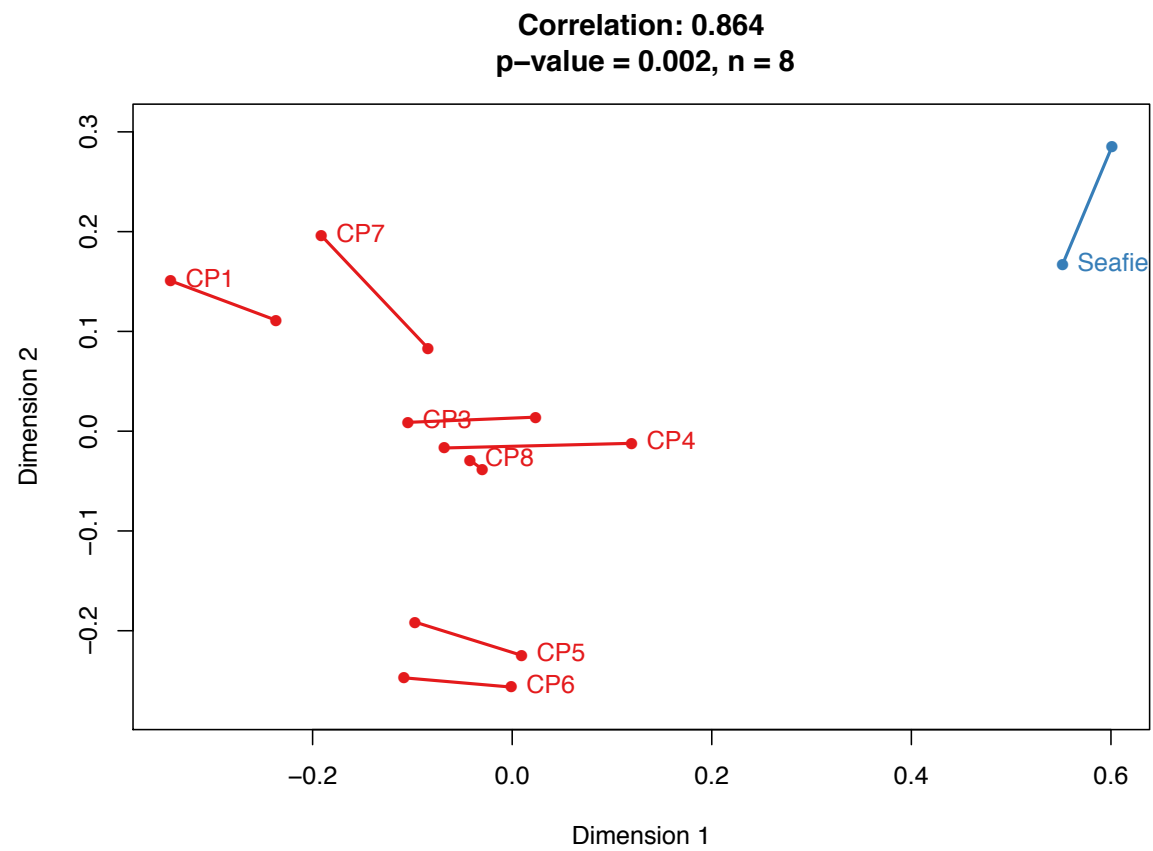
DDD= defined daily dose, OBD = occupied bed day, ITU=intensive care unit, SHDU = surgical high dependency unit.



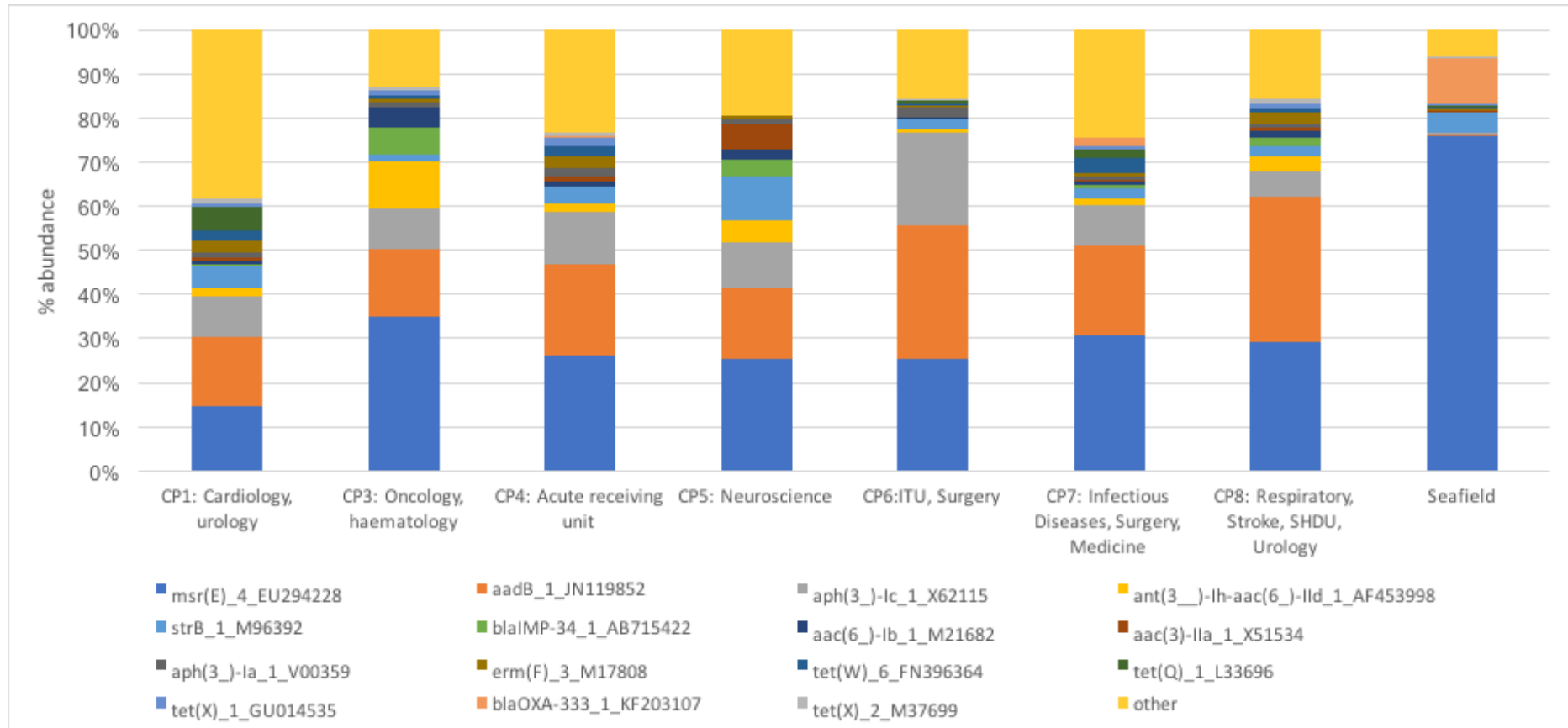
Supplementary Figure 3 Phenotypic resistance in clinical isolates by antimicrobial class represented by average antibiogram length per organism at each collection point



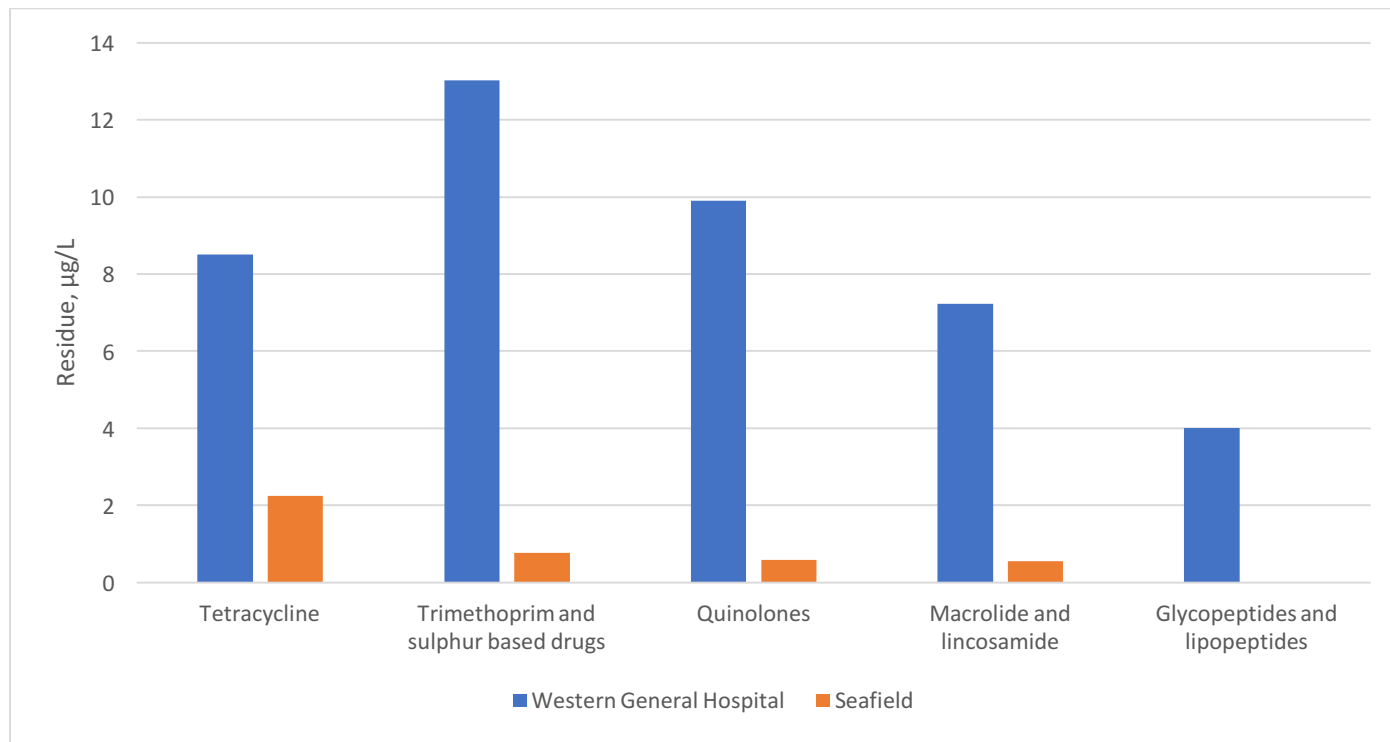
Supplementary Figure 4 Total AMR gene abundance in FPKM



Supplementary Figure 5 Procrustes analysis on ordinations of AMR genes and bacterial composition



Supplementary Figure 6 Fifteen most common AMR genes relative to total abundance within samples



Supplementary Figure 7 Antibiotic residues from composite hospital wastewater sample and urban sewage as measured by LC-MS/MS

Supplementary tables

Name	All read pairs	Non-human read pairs		Bacterial read pairs		Viral read pairs		Unclassified read pairs		AMR gene read pairs	
CP1	38936133	37197751	96%	24881608	67%	290110	0.78%	12026033	32%	18653	0.05%
CP3	39020950	37263424	95%	27045455	73%	27924	0.07%	10190045	27%	50260	0.13%
CP4	38917796	38765366	100%	30882916	80%	12683	0.03%	7869767	20%	4811	0.01%
CP5	39134218	38416823	98%	30394336	79%	25403	0.07%	7997084	21%	39324	0.10%
CP6	38570082	28477657	74%	23075108	81%	70208	0.25%	5332341	19%	23535	0.08%
CP7	39245486	37945786	97%	27022991	71%	114619	0.30%	10808176	28%	36431	0.10%
CP8	35793379	35257817	99%	26231254	74%	112101	0.32%	8914462	25%	40968	0.12%
Seafield	38347503	38259522	100%	30383525	79%	27149	0.07%	7848848	21%	11894	0.03%

Supplementary Table 1 Total read pairs, read pairs assigned to major taxonomic groups and antimicrobial resistance gene read pairs

Percentages of bacterial, viral, unclassified and AMR gene read pairs are calculated from the total non-human reads per collection point.

Supplementary Table 2 Bacterial genera at each collection point

Please see separate excel file

Supplementary Table 3 AMR genes at each collection point

Please see separate excel file

<i>Coefficients</i>	<i>Odds Ratios</i>	<i>Conf. Int (95%)</i>	<i>P-Value</i>
Intercept	0.04	0.01 – 0.23	<0.001
FPKM (log, urine/faecal samples)	1.15	0.92 – 1.44	0.224
FPKM (log, non-urine/faecal samples)	0.86	0.67 – 1.11	0.249
Isolate Type = Urine	1.40	0.64 – 3.06	0.396
Random Effects			
σ^2	5.22		
τ_{00} obs	1.93		
τ_{00} Organism	3.39		
τ_{00} ABClass	4.06		
τ_{00} Site	0.02		
ICC	0.59		
N _{Organism}	31		
N _{Site}	7		
N _{ABClass}	10		
N _{obs}	1124		
Observations	1124		
Marginal R ² / Conditional R ²	0.021 / 0.598		

Supplementary Table 4 Output from model examining the relationship between resistance in clinical isolates and AMR gene abundance in hospital wastewater

Clinical Isolate Model			
<i>Coefficients</i>	<i>Odds Ratios</i>	<i>Conf. Int (95%)</i>	<i>P-Value</i>
Intercept	0.02	0.00 – 0.11	<0.001
AMU (log, urine/faecal samples)	0.92	0.64 – 1.31	0.629
AMU (log, non-urine/faecal samples)	1.27	0.85 – 1.89	0.245
Isolate Type = Urine	8.05	2.69 – 24.15	<0.001
Random Effects			
σ^2	3.29		
τ_{00} obs	1.82		
τ_{00} Organism	3.40		
τ_{00} ABClass	4.04		
τ_{00} Site	0.01		
ICC obs	0.14		
ICC Organism	0.27		
ICC ABClass	0.32		
ICC Site	0.00		
Observations	1124		
Marginal R ² / Conditional R ²	0.034 / 0.607		

Supplementary Table 5 Output from model examining the relationship between resistance in clinical isolates and antimicrobial usage (AMU)