

Epigenome-wide association study of seizures in childhood and adolescence

Supplemental info

Doretta Caramaschi, PhD^{1,2} *, Charlie Hatcher, MSc^{1,2}, Rosa H. Mulder, MSc^{3,4,5}, Janine F. Felix, PhD^{5,6}, Charlotte A. M. Cecil, PhD^{4,6}, Caroline L. Relton, PhD^{1,2}, Esther Walton, PhD^{1,2,8}.

¹ Bristol Medical School, Population Health Sciences, University of Bristol, UK

² Medical Research Council Integrative Epidemiology Unit, University of Bristol, UK

³ Institute of Education and Child Studies, Leiden University, The Netherlands

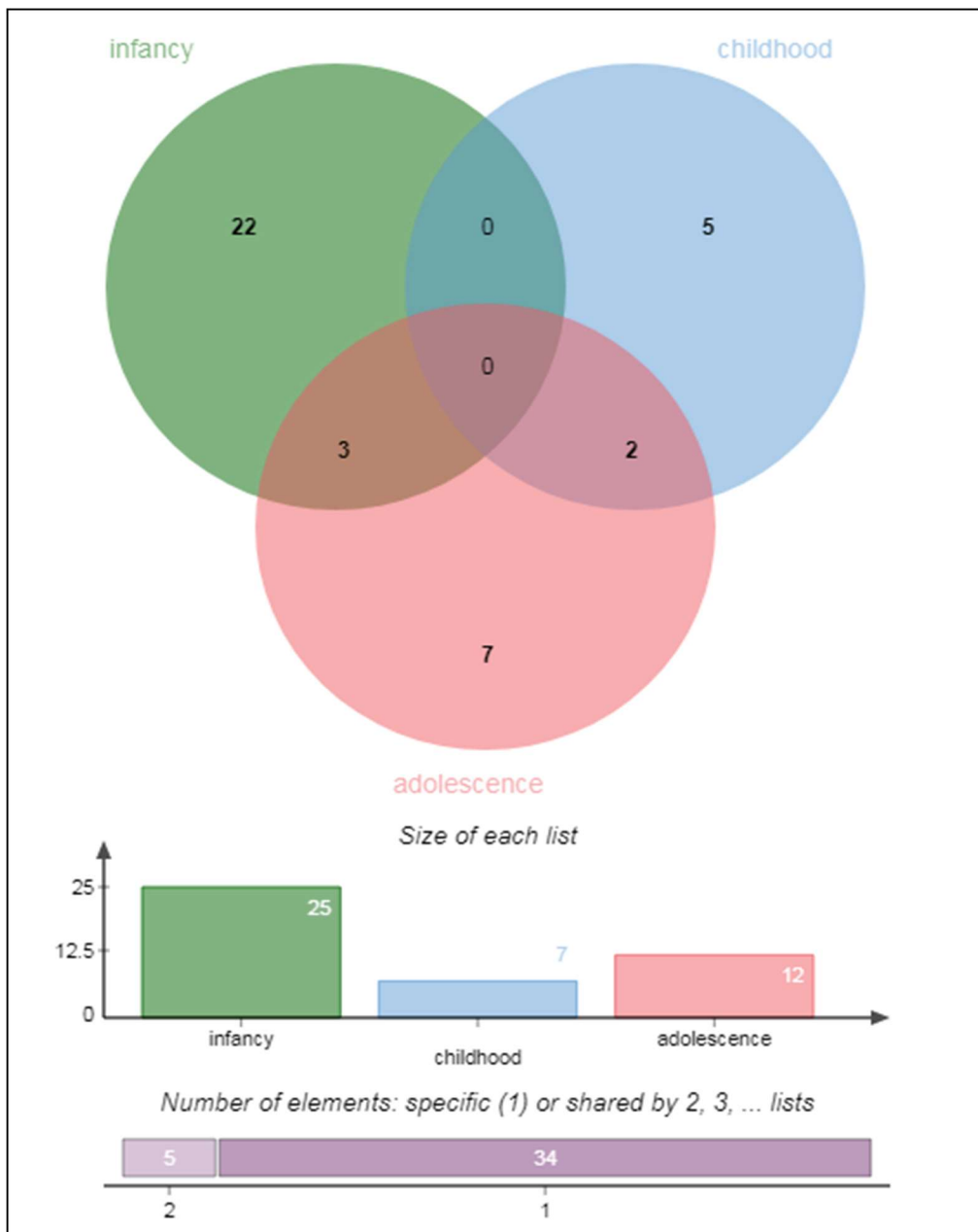
⁴ Department of Child and Adolescent Psychiatry/Psychology, Erasmus MC, University Medical Center Rotterdam, Rotterdam, The Netherlands

⁵ Generation R Study Group, Erasmus MC, University Medical Center Rotterdam, Rotterdam, The Netherlands

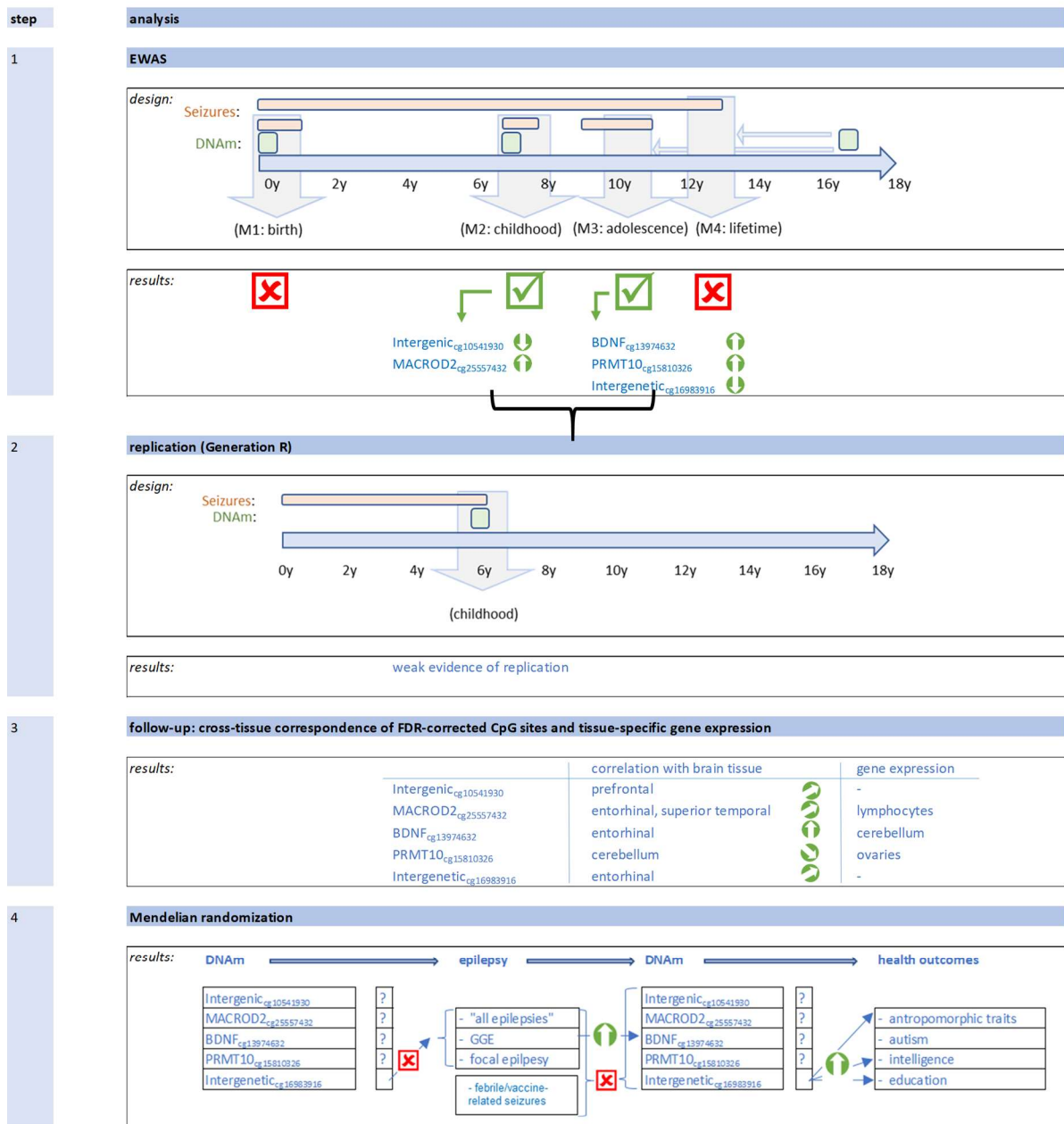
⁶ Department of Pediatrics, Erasmus MC, University Medical Center Rotterdam, Rotterdam, the Netherlands

⁷ Department of Epidemiology, Erasmus MC, University Medical Center Rotterdam, Rotterdam, The Netherlands

⁸ Department of Psychology, University of Bath, UK



SM Figure 1. Overlap of cases across time points.

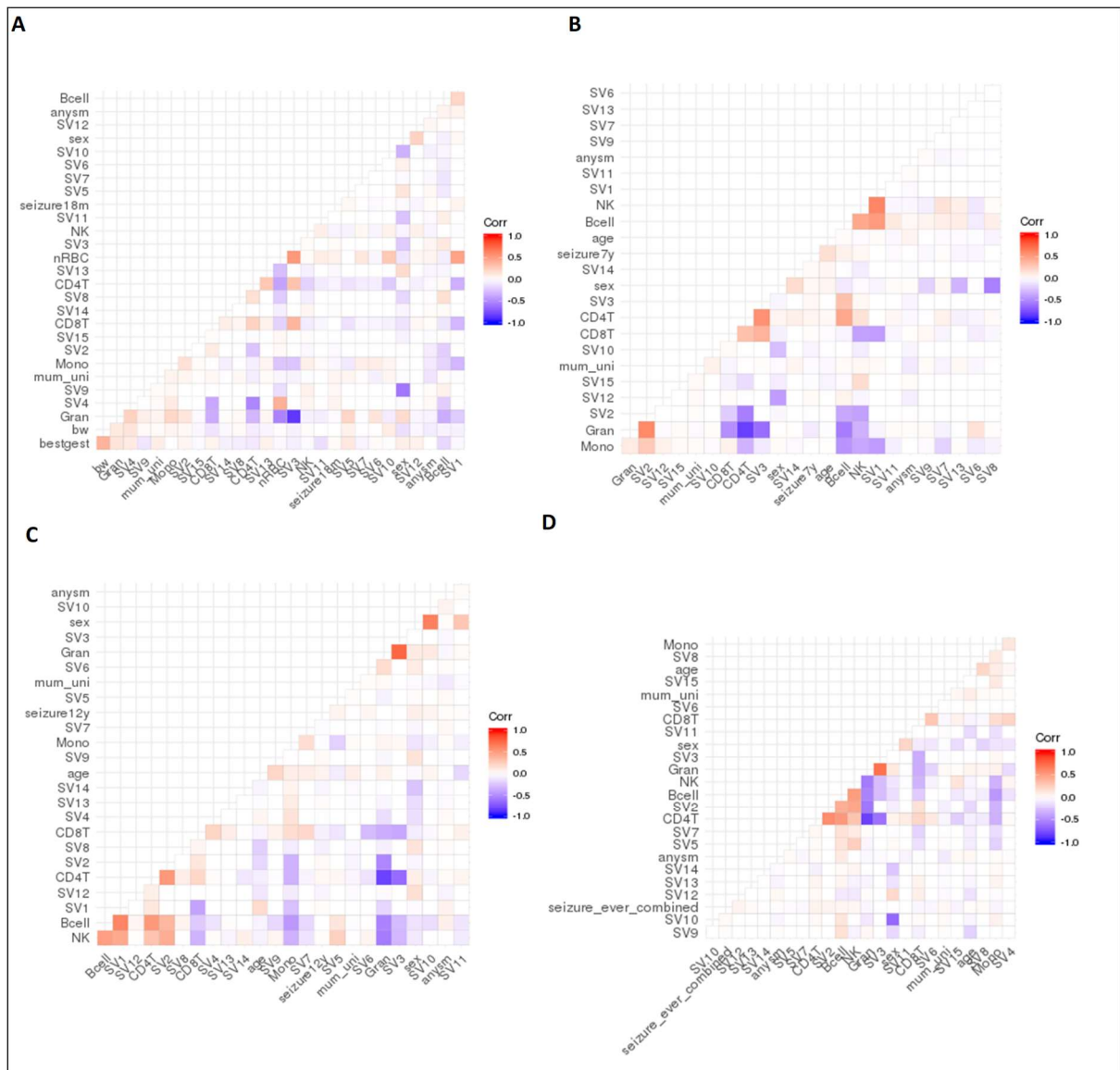


SM Figure 2. Overview of results. Epilepsy was chosen as a trait (rather than seizures) due to the availability of GWAS summary data on epilepsy based on UK Biobank, International League Against Epilepsy Consortium on Complex Epilepsies as well as febrile and MMR-vaccine-related seizures. Covariates used in each model (SV=surrogate variable):
 M1: age + sex + birthweight + gestational age + maternal smoking + maternal education + nucleated red blood cells + granulocytes + monocytes + natural killer cells + B cells + CD4(+)T cells + CD8(+)T cells + SV1 + ... + SV15
 M2: age + sex + maternal smoking + maternal education + granulocytes + monocytes + natural killer cells + B cells + CD4(+)T cells + CD8(+)T cells + SV1 + ... + SV13

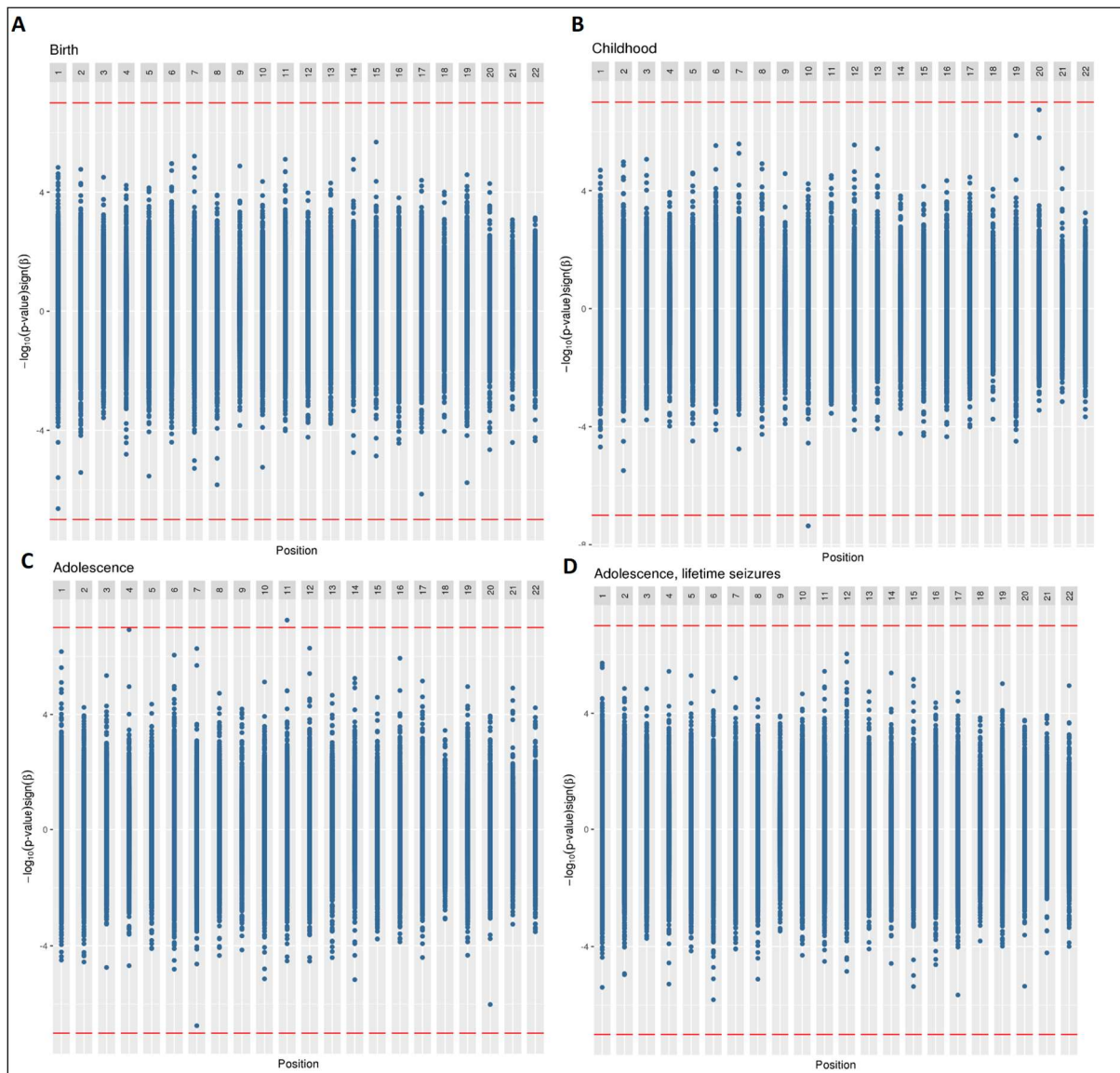
M3: age + sex + maternal smoking + maternal education + granulocytes + monocytes + natural killer cells + B cells + CD4(+)T cells + CD8(+)T cells + SV1 + ... + SV14

M4: age + sex + maternal smoking + maternal education + granulocytes + monocytes + natural killer cells + B cells + CD4(+)T cells + CD8(+)T cells + SV1 + ... + SV14

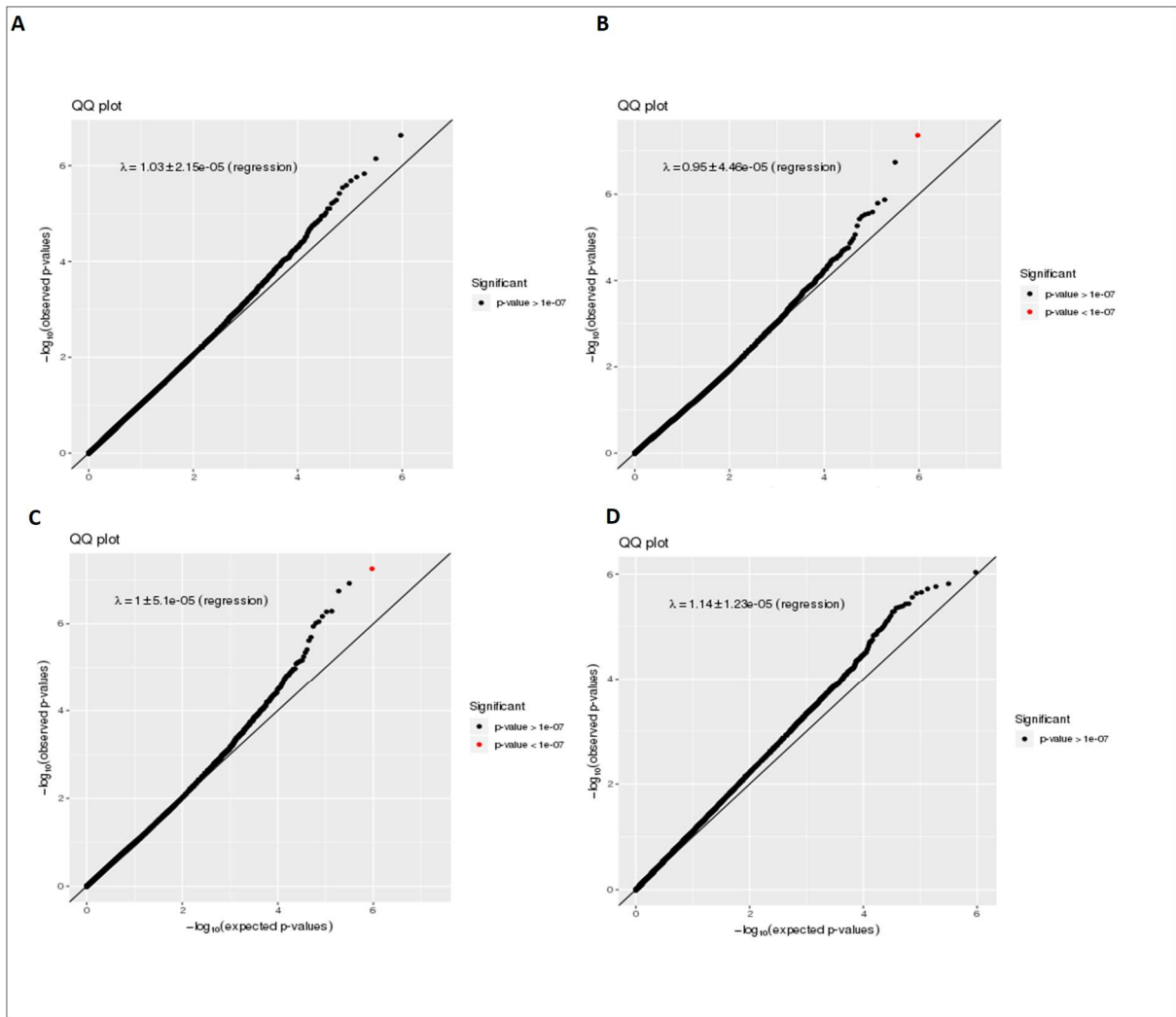
M2 (Generation R): age + sex + maternal smoking + maternal education + granulocytes + monocytes + natural killer cells + B cells + CD4(+)T cells + CD8(+)T cells + SV1 + ... + SV13



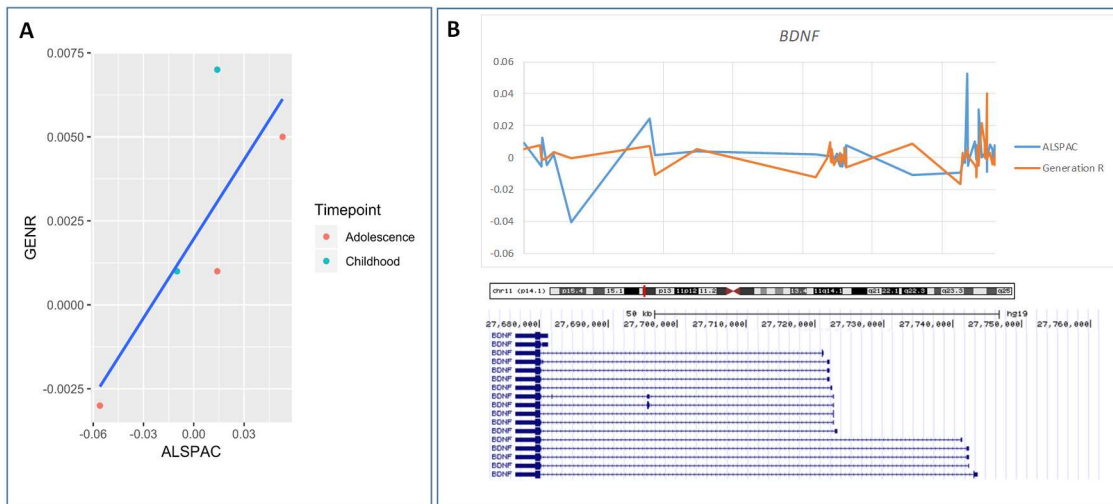
SM Figure 3. Plots displaying bivariate correlations between all variables included in the final models: (A) at birth, (B) during childhood and (C-D) adolescence (cross-sectional and lifetime seizure exposure, respectively).



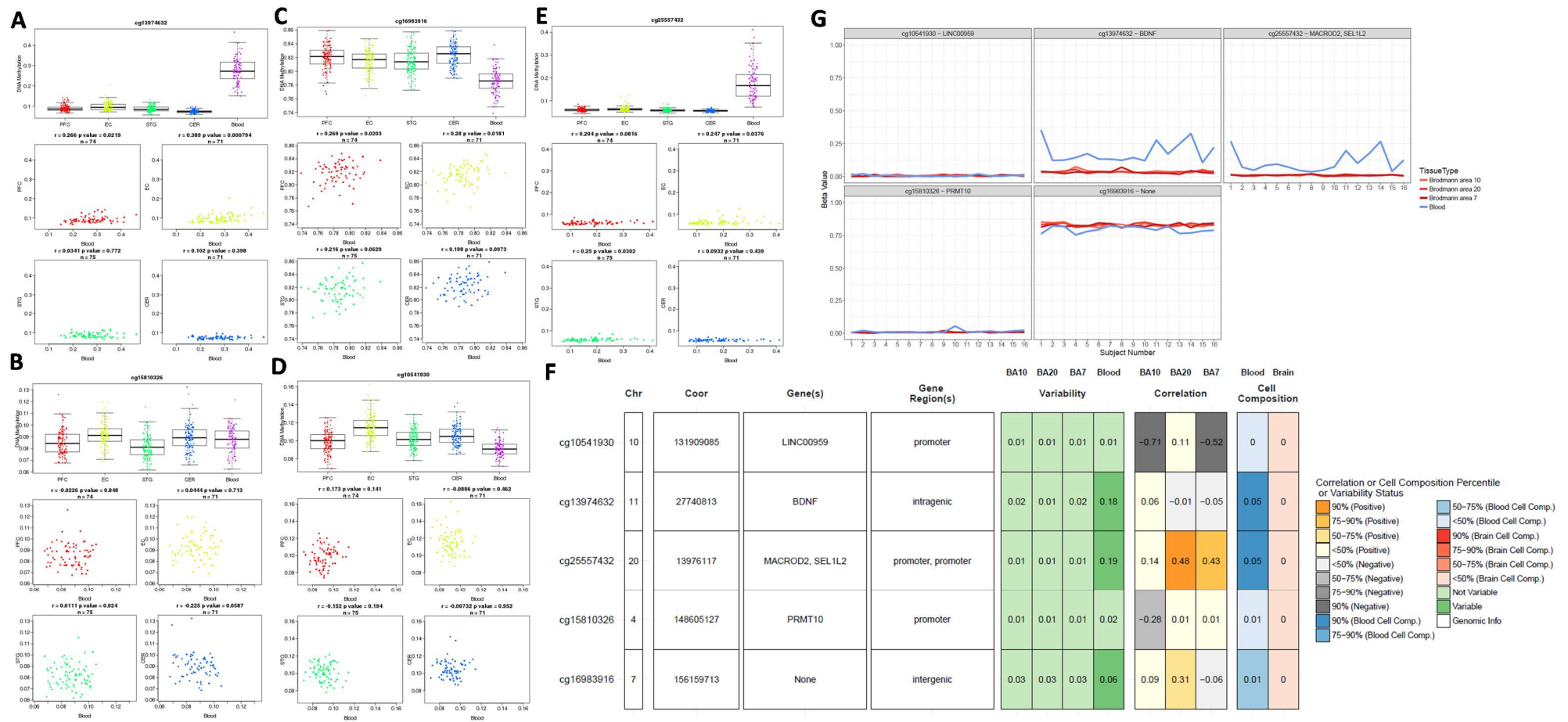
SM Figure 4. Miami plots displaying EWAS results: (A) at birth, (B) during childhood and (C-D) adolescence (cross-sectional and lifetime seizure exposure, respectively). Positive values on y-axis indicate $-\log(P\text{-values})$ of hypermethylated sites, whereas negative values on the y-axis indicate $-\log(P\text{-values})$ of hypomethylated sites (the sign of the y-axis values have been changed to reflect this). Bonferroni cut-off line in red.



SM Figure 5. Quantile-quantile plots displaying potential test statistic inflation in the final models (A) at birth, (B) during childhood and (C-D) adolescence (cross-sectional and lifetime seizure exposure, respectively). Lambda was calculated using the regression method.

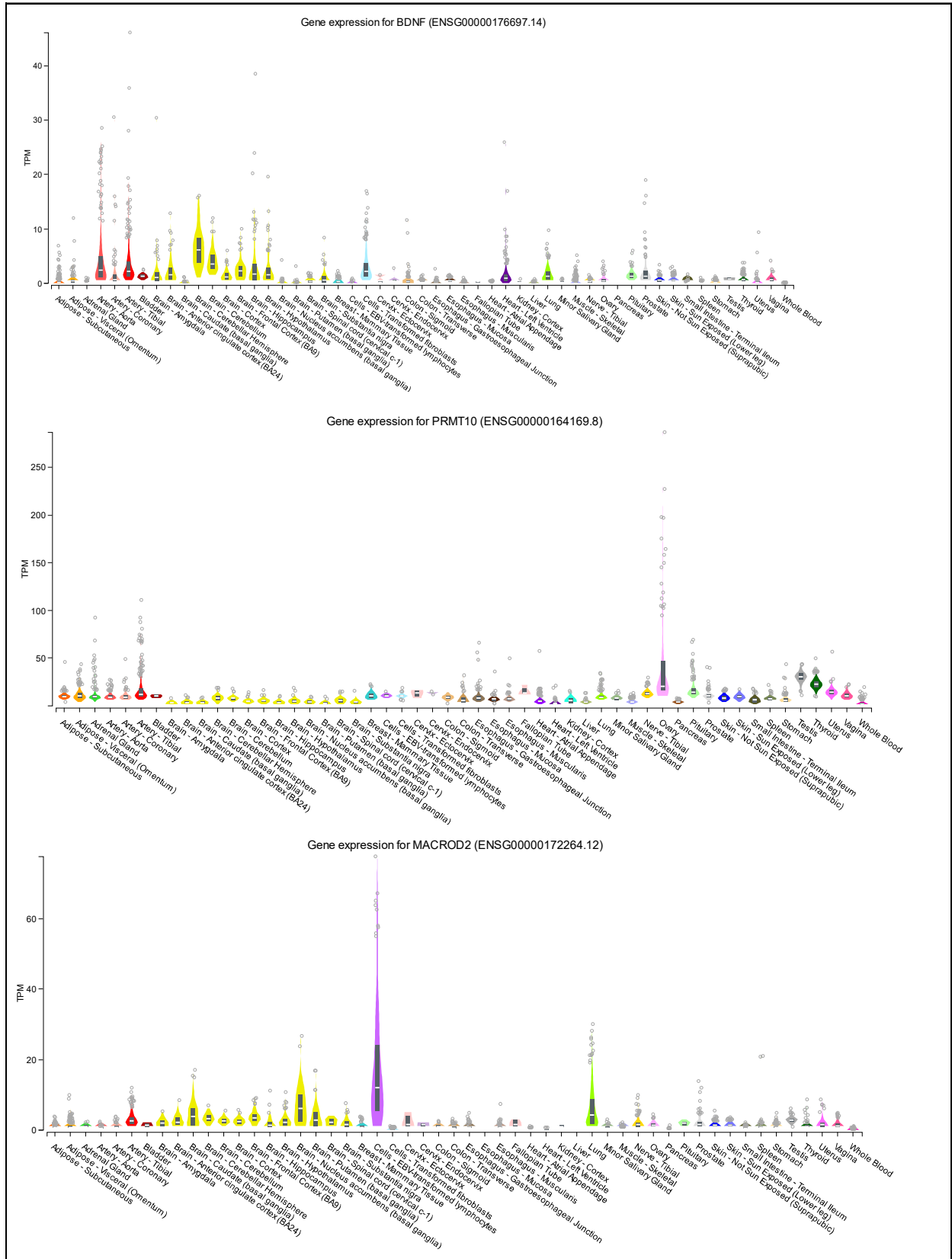


SM Figure 6. A) Regression betas in ALSPAC (x-axis) versus beta in Generation R (y-axis), plotted for the five most significant probes at each timepoint. B) Differences in DNA methylation according to experienced seizures in ALSPAC and Generation R (top panel) in the BDNF gene. The bottom panel shows the location of the transcripts of the different isoforms of the BDNF gene located on the reverse strand.



SM Figure 7. Cross-tissue correspondence of CpG sites, passing FDR correction in ALSPAC, based on data available at A-E)

<https://epigenetics.essex.ac.uk/bloodbrain> and F-G) <https://redgar598.shinyapps.io/BECon>. PFC = prefrontal cortex; STG = superior temporal gyrus; EC = entorhinal cortex; CER = cerebellum.



SM Figure 8. Tissue-specific expression of *BDNF*, *MACROD2* and *PRMT10*, based on data available at www.gtexportal.org.

SM Table 1. Sample descriptives of Generation R.

Characteristic	Generation R		
	with seizures	without seizures	total
N	19	413	432
Sex (%F)	42.1%	50.8%	50.5%
Age at methylation in years (SD)	5.95 (0.15)	6.01 (0.30)	6.00 (0.29)
Age at seizure assessment in years (SD)	6.11 (0.52)	6.01 (0.33)	6.01 (0.34)
Birthweight in g (SD)	3342.89 (544.36)	3582.28 (491.02)	3571.75 (495.24)
Gestational age in weeks (SD)	39.81 (1.62)	40.22 (1.46)	40.20 (1.46)
Maternal smoking (% Yes)	21.1%	19.9%	19.9%
Maternal education (% University degree)	31.6%	42.6%	42.1%

SM Table 2. Replication in Generation R and meta-analysis.

INFO				ALSPAC					GenerationR			Meta-analysis		
probeID	CHR	MAPINFO	timepoint	BETA	SE	P_VAL	FDR	Bonferroni	BETA	SE	P_VAL	BETA	SE	P_VAL
FDR probes														
cg13974632	11	27740813	Adolescence	0.053	0.010	5.55E-08	0.026	0.026	0.005	0.006	0.356	0.018	0.005	5.79E-04
cg15810326	4	148605127	Adolescence	0.014	0.003	1.19E-07	0.028	0.056	0.001	0.004	0.877	0.009	0.002	1.03E-04
cg16983916	7	156159713	Adolescence	-0.056	0.011	1.79E-07	0.028	0.084	-0.003	0.005	0.487	-0.012	0.005	7.98E-03
cg10541930	10	131909085	Childhood	-0.010	0.002	4.32E-08	0.020	0.020	0.001	0.003	0.737	-0.007	0.002	7.03E-05
cg25557432	20	13976117	Childhood	0.014	0.003	1.82E-07	0.043	0.086	0.007	0.005	0.145	0.012	0.003	2.34E-06
BDNF														
cg06979684	11	27677125	27677125	0.009	0.019	0.623	1.000	1.000	0.005	0.007	0.451	0.006	0.007	0.404
cg01418645	11	27679469	27679469	-0.004	0.009	0.604	1.000	1.000	0.008	0.004	0.062	0.006	0.004	0.100
cg08388004	11	27679632	27679632	-0.005	0.007	0.429	1.000	1.000	-0.001	0.003	0.878	-0.002	0.003	0.557
cg23426002	11	27679729	27679729	0.013	0.010	0.206	1.000	1.000	-0.001	0.004	0.768	9.00E-04	0.004	0.802
cg05189570	11	27680480	27680480	-0.005	0.006	0.418	1.000	1.000	-4.05E-04	0.005	0.934	-0.002	0.004	0.594
cg07238832	11	27681475	27681475	0.002	0.008	0.815	1.000	1.000	0.003	0.005	0.487	0.003	0.004	0.521
cg14291693	11	27683959	27683959	-0.040	0.013	0.002	0.787	1.000	-2.73E-04	0.008	0.972	-0.011	0.007	0.107
cg15014679	11	27695210	27695210	0.024	0.014	0.083	1.000	1.000	0.007	0.007	0.327	0.010	0.006	0.097
cg18354203	11	27696004	27696004	0.001	0.012	0.910	1.000	1.000	-0.011	0.008	0.171	-0.007	0.007	0.272
cg18595174	11	27701991	27701991	0.004	0.012	0.741	1.000	1.000	0.005	0.007	0.427	0.005	0.006	0.433
cg20108357	11	27718978	27718978	0.002	0.020	0.922	1.000	1.000	-0.013	0.011	0.237	-0.010	0.010	0.324
cg09492354	11	27720709	27720709	0.001	0.002	0.597	1.000	1.000	-2.97E-04	0.002	0.847	5.00E-04	0.001	0.724
cg27193031	11	27721088	27721088	0.001	0.003	0.747	1.000	1.000	0.009	0.004	0.021	0.004	0.002	0.106
cg25962210	11	27721222	27721222	3.98E-04	0.005	0.930	1.000	1.000	-0.002	0.004	0.549	-0.001	0.003	0.696
cg15313332	11	27721270	27721270	0.004	0.001	0.007	0.931	1.000	0.002	0.002	0.390	0.004	9.00E-04	5.70E-05
cg26057780	11	27721277	27721277	0.001	0.001	0.413	1.000	1.000	0.003	0.002	0.227	0.001	9.00E-04	0.118
cg10558494	11	27721280	27721280	0.001	0.003	0.847	1.000	1.000	-0.003	0.004	0.486	-4.00E-04	0.002	0.855
cg06260077	11	27721350	27721350	0.004	0.003	0.214	1.000	1.000	0.005	0.006	0.350	0.004	0.003	0.118
cg20954537	11	27721668	27721668	-0.001	0.002	0.522	1.000	1.000	-0.005	0.003	0.135	-0.002	0.002	0.180
cg23947039	11	27722037	27722037	0.002	0.003	0.376	1.000	1.000	-0.001	0.003	0.801	5.00E-04	0.002	0.814
cg00298481	11	27722063	27722063	-0.001	0.002	0.525	1.000	1.000	-0.002	0.002	0.442	-0.002	0.001	0.289
cg07159484	11	27722066	27722066	-4.63E-04	0.001	0.444	1.000	1.000	-0.001	0.002	0.389	-2.00E-04	9.00E-04	0.823
cg017159484	11	27722523	27722523	-0.005	0.003	0.062	1.000	1.000	0.003	0.004	0.455	-0.002	0.002	0.377
cg06025631	11	27722549	27722549	0.002	0.001	0.121	1.000	1.000	-0.002	0.002	0.116	0.001	9.00E-04	0.180
cg03984780	11	27722617	27722617	0.001	0.003	0.819	1.000	1.000	-0.001	0.004	0.689	3.00E-04	0.002	0.907
cg15710245	11	27722620	27722620	-0.004	0.013	0.767	1.000	1.000	0.001	0.007	0.941	-1.00E-04	0.006	0.984
cg08362738	11	27722636	27722636	-0.005	0.003	0.072	1.000	1.000	-0.004	0.003	0.238	-0.005	0.002	0.034
cg25328597	11	27722638	27722638	-0.005	0.003	0.125	1.000	1.000	0.001	0.003	0.787	-0.002	0.002	0.346
cg15914769	11	27722774	27722774	0.002	0.002	0.296	1.000	1.000	-0.001	0.002	0.636	5.00E-04	0.001	0.724
cg04672351	11	27722889	27722889	-0.006	0.003	0.038	1.000	1.000	-0.001	0.003	0.608	-0.004	0.002	0.099
cg09606766	11	27722971	27722971	-0.001	0.002	0.613	1.000	1.000	0.001	0.003	0.652	-4.00E-04	0.002	0.817
cg20340655	11	27723075	27723075	-3.05E-04	0.001	0.836	1.000	1.000	4.43E-04	0.002	0.832	0.000	9.00E-04	1.000
cg11241206	11	27723128	27723128	3.42E-04	0.002	0.822	1.000	1.000	-0.003	0.003	0.264	-9.00E-04	0.002	0.579
cg15688670	11	27723190	27723190	-0.001	0.001	0.346	1.000	1.000	-0.001	0.002	0.678	-0.001	9.00E-04	0.264
cg23497217	11	27723214	27723214	0.006	0.005	0.222	1.000	1.000	0.006	0.005	0.223	0.006	0.004	0.090
cg05218375	11	27723218	27723218	-0.002	0.009	0.842	1.000	1.000	0.001	0.007	0.871	-1.00E-04	0.006	0.981
cg06991510	11	27723237	27723237	0.001	0.001	0.368	1.000	1.000	-0.001	0.002	0.561	6.00E-04	9.00E-04	0.502
cg24377657	11	27723245	27723245	-0.005	0.008	0.486	1.000	1.000	0.003	0.005	0.624	8.00E-04	0.004	0.859
cg26840770	11	27723290	27723290	-0.004	0.006	0.445	1.000	1.000	0.002	0.004	0.663	2.00E-04	0.003	0.963
cg01636003	11	27723385	27723385	-0.004	0.003	0.173	1.000	1.000	1.86E-04	0.003	0.956	-0.002	0.002	0.346
cg24065044	11	27723409	27723409	0.008	0.006	0.230	1.000	1.000	-0.006	0.006	0.295	0.001	0.004	0.814
cg11806762	11	27732958	27732958	-0.011	0.017	0.515	1.000	1.000	0.009	0.009	0.355	0.005	0.008	0.561
cg17413943	11	27739827	27739827	-0.009	0.013	0.470	1.000	1.000	-0.017	0.006	0.005	-0.016	0.005	0.004
cg05818894	11	27740078	27740078	-0.004	0.003	0.240	1.000	1.000	0.003	0.003	0.336	-5.00E-04	0.002	0.814
cg21010859	11	27740161	27740161	-0.001	0.002	0.543	1.000	1.000	0.002	0.003	0.572	-1.00E-04	0.002	0.963
cg04481212	11	27740495	27740495	-0.003	0.002	0.115	1.000	1.000	-0.001	0.004	0.794	-0.003	0.002	0.146
cg13974632	11	27740813	27740813	0.053	0.010	5.55E-08	0.026	0.026	0.005	0.006	0.356	0.018	0.005	5.79E-04
cg05733135	11	27740876	27740876	-0.005	0.005	0.246	1.000	1.000	0.002	0.004	0.602	-7.00E-04	0.003	0.815
cg22043168	11	27741077	27741077	-0.001	0.005	0.907	1.000	1.000	-2.98E-04	0.004	0.933	-4.00E-04	0.003	0.901
cg24650785	11	27741916	27741916	0.010	0.008	0.190	1.000	1.000	-0.005	0.006	0.461	4.00E-04	0.005	0.934
cg26949694	11	27742060	27742060	-0.001	0.007	0.849	1.000	1.000	-0.007	0.005	0.169	-0.005	0.004	0.222
cg25412831	11	27742138	27742138	0.008	0.008	0.329	1.000	1.000	-0.012	0.006	0.038	-0.005	0.005	0.317
cg06816235	11	27742219	27742219	-0.002	0.005	0.626	1.000	1.000	-0.003	0.004	0.497	-0.003	0.003	0.403
cg01225698	11	27742355	27742355	0.004	0.008	0.557	1.000	1.000	0.008	0.007	0.288	0.006	0.005	0.234
cg12448003	11	27742365	27742365	-0.002	0.003	0.435	1.000	1.000	-0.001	0.004	0.762	-0.002	0.002	0.494
cg06684850	11	27742369	27742369	-0.005	0.009	0.570	1.000	1.000	-5.97E-05	0.008	0.994	-0.002	0.006	0.712
cg10635145	11	27742435	27742435	0.007	0.019	0.705	1.000	1.000	0.005	0.014	0.744	0.006	0.011	0.613
cg04106006	11	27742454	27742454	0.030	0.018	0.093	1.000	1.000	-0.004	0.014	0.770	0.009	0.011	0.425
cg07704699	11	27742832	27742832	2.06E-04	0.017	0.990	1.000	1.000	0.021	0.013	0.106	0.013	0.010	0.199
cg27351358	11	27743258	27743258	0.003	0.003	0.349	1.000	1.000	0.009	0.005	0.093	0.005	0.003	0.074
cg02527472	11	27743348	27743348	3.27E-04	0.003	0.906	1.000	1.000	-8.60E-05	0.004	0.983	0.000	0.002	1.000
cg01642653	11	27743476	27743476	-0.001	0.003	0.801	1.000	1.000	0.005					

SM Table 3. Two-sample MR analysis of the effect of DNA methylation on epilepsy (method=Wald ratio).

CpG site (Exposure)	Disease (Outcome)	N of SNPs	Beta	(logodds SE)	P value	OR
cg16983916	ICD10: G40.3 Generalised idiopathic epilepsy and epileptic syndromes	1	-9.83E-05	0.0002	0.5743	0.9999
cg16983916	ICD10: G40.9 Epilepsy, unspecified	1	4.99E-04	0.0006	0.4013	1.0005
cg16983916	ICD10: G40.1 Localisation-related (focal) (partial) symptomatic epilepsy and epilepti	1	-9.48E-05	0.0001	0.2523	0.9999
cg16983916	ICD10: G40.2 Localisation-related (focal) (partial) symptomatic epilepsy and epilepti	1	-1.13E-04	0.0001	0.3737	0.9999
cg16983916	ICD10: G40.8 Other epilepsy	1	-2.73E-05	0.0001	0.6016	1.0000
cg16983916	ICD10: G40.1 Localisation-related (focal) (partial) symptomatic epilepsy and epilepti	1	-5.44E-05	0.0001	0.4631	0.9999
cg16983916	ICD10: G40.2 Localisation-related (focal) (partial) symptomatic epilepsy and epilepti	1	7.40E-05	0.0001	0.5731	1.0001
cg16983916	ICD9: 3459 Epilepsy, unspecified	1	8.71E-05	0.0001	0.2399	1.0001
cg16983916	ICD10: G40.3 Generalised idiopathic epilepsy and epileptic syndromes	1	-1.01E-05	0.0001	0.9427	1.0000

SM Table 4. Two-sample MR analysis of the effect of epilepsy on DNA methylation.

Disease (Exposure)	CpG site (Outcome)	N of SNPs	Method	Beta	SE	P value
All epilepsy	cg16983916	4	MR Egger	0.276	1.154	0.834
All epilepsy	cg16983916	4	Weighted median	-0.070	0.168	0.678
All epilepsy	cg16983916	4	Inverse variance weighted	-0.030	0.145	0.837
All epilepsy	cg16983916	4	Simple mode	-0.227	0.289	0.489
All epilepsy	cg16983916	4	Weighted mode	-0.234	0.256	0.429
All epilepsy	cg10541930	4	MR Egger	-0.294	0.689	0.711
All epilepsy	cg10541930	4	Weighted median	-0.148	0.111	0.183
All epilepsy	cg10541930	4	Inverse variance weighted	-0.136	0.102	0.181
All epilepsy	cg10541930	4	Simple mode	-0.161	0.163	0.397
All epilepsy	cg10541930	4	Weighted mode	-0.163	0.159	0.381
All epilepsy	cg15810326	4	MR Egger	-0.352	0.575	0.603
All epilepsy	cg15810326	4	Weighted median	-0.033	0.098	0.734
All epilepsy	cg15810326	4	Inverse variance weighted	-0.036	0.085	0.670
All epilepsy	cg15810326	4	Simple mode	-0.034	0.147	0.832
All epilepsy	cg15810326	4	Weighted mode	-0.023	0.153	0.891
All epilepsy	cg13974632	4	MR Egger	-0.279	1.646	0.881
All epilepsy	cg13974632	4	Weighted median	-0.013	0.158	0.934
All epilepsy	cg13974632	4	Inverse variance weighted	0.139	0.202	0.490
All epilepsy	cg13974632	4	Simple mode	-0.078	0.280	0.798
All epilepsy	cg13974632	4	Weighted mode	-0.108	0.200	0.627
All epilepsy	cg25557432	4	MR Egger	-0.210	1.173	0.874
All epilepsy	cg25557432	4	Weighted median	0.148	0.211	0.482
All epilepsy	cg25557432	4	Inverse variance weighted	0.143	0.173	0.408
All epilepsy	cg25557432	4	Simple mode	0.240	0.280	0.455
All epilepsy	cg25557432	4	Weighted mode	0.234	0.284	0.470
Focal epilepsy	cg16983916	1	Wald ratio	-0.337	0.297	0.256
Focal epilepsy	cg10541930	1	Wald ratio	-0.249	0.208	0.231
Focal epilepsy	cg15810326	1	Wald ratio	-0.204	0.173	0.239
Focal epilepsy	cg13974632	1	Wald ratio	-0.304	0.235	0.195
Focal epilepsy	cg25557432	1	Wald ratio	0.127	0.354	0.719
GGE	cg16983916	3	MR Egger	0.050	1.129	0.972
GGE	cg16983916	3	Weighted median	0.128	0.151	0.396
GGE	cg16983916	3	Inverse variance weighted	0.110	0.128	0.394
GGE	cg16983916	3	Simple mode	0.210	0.203	0.409
GGE	cg16983916	3	Weighted mode	0.163	0.178	0.455
GGE	cg10541930	3	MR Egger	1.645	0.519	0.194
GGE	cg10541930	3	Weighted median	0.083	0.126	0.509
GGE	cg10541930	3	Inverse variance weighted	0.073	0.184	0.691
GGE	cg10541930	3	Simple mode	0.023	0.210	0.924
GGE	cg10541930	3	Weighted mode	0.160	0.171	0.449
GGE	cg15810326	3	MR Egger	0.177	0.701	0.843
GGE	cg15810326	3	Weighted median	-0.063	0.091	0.487
GGE	cg15810326	3	Inverse variance weighted	-0.085	0.085	0.320
GGE	cg15810326	3	Simple mode	-0.040	0.111	0.755
GGE	cg15810326	3	Weighted mode	-0.052	0.102	0.658
GGE	cg13974632	3	MR Egger	0.525	1.230	0.743
GGE	cg13974632	3	Weighted median	0.278	0.127	0.029
GGE	cg13974632	3	Inverse variance weighted	0.224	0.144	0.120
GGE	cg13974632	3	Simple mode	0.361	0.170	0.168
GGE	cg13974632	3	Weighted mode	0.349	0.175	0.184
GGE	cg25557432	3	MR Egger	-0.848	0.885	0.513
GGE	cg25557432	3	Weighted median	-0.129	0.173	0.455
GGE	cg25557432	3	Inverse variance weighted	-0.046	0.142	0.746
GGE	cg25557432	3	Simple mode	-0.132	0.205	0.586
GGE	cg25557432	3	Weighted mode	-0.135	0.185	0.542

GGE= Genetic generalized epilepsy

SM Table 5. Two-sample MR analysis of the effect of febrile and vaccine-related seizures on DNA methylation.

CpG site	exposure	N of SNPs	Method	Beta	SE	P-value
cg10541930	seizures	5	Inverse variance weighted	0.009	0.057	0.880
cg10541930	seizures	5	MR Egger	0.113	0.200	0.611
cg10541930	seizures	5	Simple mode	-0.040	0.065	0.573
cg10541930	seizures	5	Weighted median	-0.027	0.050	0.591
cg10541930	seizures	5	Weighted mode	-0.040	0.055	0.508
cg11510269	seizures	5	Inverse variance weighted	0.037	0.053	0.485
cg11510269	seizures	5	MR Egger	-0.071	0.184	0.725
cg11510269	seizures	5	Simple mode	-0.001	0.099	0.995
cg11510269	seizures	5	Weighted median	0.016	0.051	0.750
cg11510269	seizures	5	Weighted mode	0.110	0.093	0.305
cg13974632	seizures	5	Inverse variance weighted	-0.037	0.042	0.376
cg13974632	seizures	5	MR Egger	0.063	0.133	0.670
cg13974632	seizures	5	Simple mode	-0.009	0.069	0.902
cg13974632	seizures	5	Weighted median	-0.030	0.050	0.545
cg13974632	seizures	5	Weighted mode	-0.027	0.061	0.677
cg15810326	seizures	5	Inverse variance weighted	0.007	0.048	0.886
cg15810326	seizures	5	MR Egger	-0.065	0.172	0.732
cg15810326	seizures	5	Simple mode	0.122	0.084	0.219
cg15810326	seizures	5	Weighted median	0.003	0.041	0.940
cg15810326	seizures	5	Weighted mode	-0.039	0.054	0.516
cg16983916	seizures	5	Inverse variance weighted	-0.078	0.053	0.140
cg16983916	seizures	5	MR Egger	0.038	0.168	0.837
cg16983916	seizures	5	Simple mode	-0.062	0.083	0.495
cg16983916	seizures	5	Weighted median	-0.068	0.066	0.304
cg16983916	seizures	5	Weighted mode	-0.062	0.078	0.469
cg17130518	seizures	5	Inverse variance weighted	0.051	0.051	0.317
cg17130518	seizures	5	MR Egger	0.224	0.154	0.240
cg17130518	seizures	5	Simple mode	0.108	0.074	0.218
cg17130518	seizures	5	Weighted median	0.079	0.051	0.121
cg17130518	seizures	5	Weighted mode	0.085	0.063	0.248
cg25557432	seizures	5	Inverse variance weighted	0.030	0.079	0.702
cg25557432	seizures	5	MR Egger	0.174	0.278	0.575
cg25557432	seizures	5	Simple mode	0.064	0.112	0.596
cg25557432	seizures	5	Weighted median	0.041	0.080	0.609
cg25557432	seizures	5	Weighted mode	0.107	0.115	0.407

SM Table 6. Top 50 associations with rs10258194 in MR_Base.

Trait	Sample Size	Source	Effect allele	Other allele	Beta	P value	SE	N cases
Birth weight	193063	Neale Lab	C	T	-0.014	1.78E-05	0.003	NA
Standing height	336474	Neale Lab	C	T	-0.007	2.90E-05	0.002	NA
Trunk fat-free mass	331030	Neale Lab	C	T	-0.006	3.73E-05	0.002	NA
Trunk predicted mass	330995	Neale Lab	C	T	-0.006	6.5E-05	0.002	NA
Forced vital capacity (FVC)	307638	Neale Lab	C	T	-0.008	8.17E-05	0.002	NA
Whole body fat-free mass	331291	Neale Lab	C	T	-0.006	9.34E-05	0.002	NA
Whole body water mass	331315	Neale Lab	C	T	-0.006	1.65E-04	0.002	NA
Leg predicted mass (right)	331285	Neale Lab	C	T	-0.006	3.26E-04	0.002	NA
Leg fat-free mass (right)	331285	Neale Lab	C	T	-0.006	3.92E-04	0.002	NA
Forced expiratory volume in 1-second (FEV1)	307638	Neale Lab	C	T	-0.007	3.93E-04	0.002	NA
Leg predicted mass (left)	331253	Neale Lab	C	T	-0.006	4.35E-04	0.002	NA
Leg fat-free mass (left)	331258	Neale Lab	C	T	-0.006	4.55E-04	0.002	NA
Basal metabolic rate	331307	Neale Lab	C	T	-0.005	7.73E-04	0.002	NA
Forced vital capacity (FVC) Best measure	255492	Neale Lab	C	T	-0.007	8.61E-04	0.002	NA
Caudate volume	30717	25607358	T	C	15.907	8.80E-04	4.782	NA
Fluid intelligence score	108818	Neale Lab	C	T	-0.030	0.001	0.009	NA
Qualifications: A levels/AS levels or equivalent	334070	Neale Lab	C	T	-0.004	0.001	0.001	91710
Birth weight	143677	27680694	C	T	-0.012	0.001	0.004	NA
Birth weight	153781	27680694	C	T	-0.012	0.002	0.004	NA
Arm predicted mass (right)	331216	Neale Lab	C	T	-0.005	0.002	0.002	NA
Age completed full time education	226899	Neale Lab	C	T	-0.007	0.002	0.002	NA
Arm fat-free mass (right)	331221	Neale Lab	C	T	-0.005	0.003	0.002	NA
Job involves mainly walking or standing	190606	Neale Lab	C	T	0.011	0.003	0.004	NA
Qualifications: None of the above	334070	Neale Lab	C	T	0.003	0.003	0.001	57567
Qualifications: College or University degree	334070	Neale Lab	C	T	-0.003	0.004	0.001	106305
Putamen volume	30717	25607358	T	C	16.973	0.004	5.846	NA
Hearing aid user	204240	Neale Lab	C	T	-0.002	0.004	0.001	10322
Age at first live birth	123846	Neale Lab	C	T	-0.011	0.004	0.004	NA
Number of live births	180952	Neale Lab	C	T	0.011	0.004	0.004	NA
Neck/shoulder pain for 3+ months	75651	Neale Lab	C	T	-0.006	0.008	0.002	52253
Amyotrophic lateral sclerosis	36052	27455348	T	C	0.009	0.008	0.003	12577
Thalamus volume	30717	25607358	T	C	16.281	0.008	6.142	NA
Amyotrophic lateral sclerosis	36052	27455348	t	c	0.046	0.009	0.018	12577
Impedance of leg (left)	331296	Neale Lab	C	T	0.006	0.010	0.002	NA
Duration of walks	288266	Neale Lab	C	T	0.007	0.010	0.003	NA
Forced expiratory volume in 1-second (FEV1) Best measure	255492	Neale Lab	C	T	-0.006	0.011	0.002	NA
Duration of other exercises	161301	Neale Lab	C	T	-0.011	0.012	0.004	NA
Arm fat-free mass (left)	331159	Neale Lab	C	T	-0.004	0.012	0.002	NA
Fractured/broken bones in last 5 years	335587	Neale Lab	C	T	-0.002	0.012	0.001	32193
Comparative body size at age 10	331693	Neale Lab	C	T	-0.004	0.012	0.002	NA
Vitamin and mineral supplements: Vitamin A	335591	Neale Lab	C	T	-0.001	0.014	3.31E-04	6173
No-wear time bias adjusted acceleration standard deviation	72615	Neale Lab	C	T	0.013	0.015	0.005	NA
Impedance of leg (right)	331301	Neale Lab	C	T	0.005	0.016	0.002	NA
Job involves heavy manual or physical work	190643	Neale Lab	C	T	0.007	0.017	0.003	NA
Weight change compared with 1 year ago	331803	Neale Lab	C	T	0.004	0.018	0.002	NA
Arm predicted mass (left)	331146	Neale Lab	C	T	-0.004	0.018	0.002	NA
Ever taken oral contraceptive pill	180749	Neale Lab	C	T	0.003	0.019	0.001	149365
Treatment/medication code: co-amilofruse	337159	Neale Lab	C	T	-1.78E-04	0.020	7.63E-05	326