

Supplementary material to accompany the manuscript:

Diet-derived fruit and vegetable metabolites suggest sex-specific mechanisms conferring protection against osteoporosis in humans

By Kelsey M. Mangano, *et al.*

This document contains supplemental tables S1 to S9, and supplemental figures S1 to S5.

List of tables:

Table S1. Plasma metabolites significantly associated with fruit and vegetable intake

Table S2. Plasma metabolites associating with fruit and vegetable intake in both men and women

Table S3. Pathways enriched from 66 plasma metabolites associating with high fruit and vegetable intake in women

Table S4. Pathways enriched from 38 plasma metabolites associating with high fruit and vegetable intake in men

Table S5. Plasma metabolites significantly associated with osteoporosis status

Table S6. Significantly enriched pathways based on 33 osteoporosis-associated metabolites in women

Table S7. Significantly enriched pathways based on 40 osteoporosis-associated metabolites in men

Table S8. Metabolite-inhibitor relationships for the steroid hormone biosynthesis pathway

Table S9. Abbreviations of osteoporosis-associated metabolites displayed in heat maps showing correlation between those metabolites and fruit/vegetable intake

List of figures:

Figure S1. Plasma metabolites significantly associated with FV intake

Figure S2. Plasma metabolites significantly associated with OS status

Figure S3. PCA of OS associated metabolites in BPROS women

Figure S4. PC 1 values are a strong indicator of OS status in BPROS women

Figure S5. PCA of OS associated metabolites in BPROS men

Table S1. Plasma metabolites significantly associated with fruit and vegetable intake

Sex	Metabolite *	Metabolite class	Identifiers **	P-value	Beta
W	proline	arginine and proline	1898, HMDB0000162	0.0388	-0.016
W	S-1-pyrroline-5-carboxylate	arginine and proline	42370, HMDB0001301	0.0162	-0.047
W	3-carboxy-4-methyl-5-propyl-2-furanpropanoate	bio-toxin / drug / xenobiotic	31787, HMDB0061112	0.0416	0.329
W	6-hydroxyindole sulfate	bio-toxin / drug / xenobiotic	48698, NA	0.0281	-0.109
W	naproxen	bio-toxin / drug / xenobiotic	12122, HMDB0001923	0.026	-32
W	1,3,7-trimethylurate	caffeine	34404, HMDB0002123	0.00755	-0.445
W	1,7-dimethylurate	caffeine	34400, HMDB0011103	0.0157	-0.234
W	3-methylxanthine	caffeine	32445, HMDB0001886	0.0491	-0.172
W	paraxanthine	caffeine	18254, HMDB0001860	0.0339	-0.178
W	theobromine	caffeine	18392, HMDB0002825	0.0335	-0.094
W	arachidonate (20:4n6)	carnitine / fatty acid	1110, HMDB0001043	0.0424	0.01
W	caproate (6:0)	carnitine / fatty acid	32489, HMDB0000535	0.000977	0.06
W	docosahexaenoate (DHA; 22:6n3)	carnitine / fatty acid	44675, HMDB0002183	0.000203	0.065
W	docosapentaenoate (n3 DPA; 22:5n3)	carnitine / fatty acid	32504, HMDB0006528	0.0263	0.042
W	eicosapentaenoate (EPA; 20:5n3)	carnitine / fatty acid	18467, HMDB0001999	0.000179	0.034
W	erucate (22:1n9)	carnitine / fatty acid	1552, HMDB0002068	0.0485	0.02
W	linoleoyl ethanolamide	carnitine / fatty acid	52608, HMDB0012252	0.000194	0.075
W	glycosyl-N-stearoyl-sphingosine (d18:1/18:0)	ceramide	52234, NA	0.00503	-0.046
W	N-palmitoyl-sphingosine (d18:1/16:0)	ceramide	44877, HMDB0004949	0.0121	-0.041
W	oleoyl ethanolamide	ceramide	38102, HMDB0002088	0.0297	0.044
W	3-methoxytyrosine	dopamine / neurological	12017, HMDB0001434	0.00501	-0.034
W	dopamine 3-O-sulfate	dopamine / neurological	48407, HMDB0006275	0.000567	0.277
W	gamma-glutamylglycine	dopamine / neurological	33949, HMDB0011667	0.0443	-0.05
W	N-acetyltyrosine	dopamine / neurological	32390, HMDB0000866	0.0498	-0.041
W	vanillactate	dopamine / neurological	54910, HMDB0000913	0.0438	-0.072
W	gamma-carboxyglutamate	glutamic acid / glutamine	38754, HMDB0041900	0.0218	-0.027
W	N-acetylglutamine	glutamic acid / glutamine	33943, HMDB0006029	0.00797	-0.058
W	S-1-pyrroline-5-carboxylate	glutamic acid / glutamine	42370, HMDB0001301	0.0162	-0.047
W	1-(1-enyl-oleoyl)-GPE (P-18:1)	glycerophosphlipid	44621, NA	0.047	0.023
W	1-linoleoylglycerol (18:2)	glycerophosphlipid	27447, NA	0.00315	0.064
W	1-linoleoyl-GPE (18:2)	glycerophosphlipid	36600, HMDB0011507	0.0243	-0.045
W	1-linoleoyl-GPI (18:2)	glycerophosphlipid	36594, NA	0.00169	0.065
W	1-oleoylglycerol (18:1)	glycerophosphlipid	21184, HMDB0011567	0.00491	0.041
W	1-palmitoleoylglycerol (16:1)	glycerophosphlipid	52431, HMDB0011565	0.0253	0.065
W	1-palmitoyl-2-arachidonoyl-GPI (16:0/20:4)	glycerophosphlipid	52467, HMDB0009789	0.0277	-0.077
W	1-palmitoylglycerol (16:0)	glycerophosphlipid	21127, HMDB0031074	0.0444	0.019
W	2-linoleoylglycerol (18:2)	glycerophosphlipid	32506, HMDB0011538	0.00212	0.107
W	2-oleoylglycerol (18:1)	glycerophosphlipid	21232, HMDB0011537	0.0174	0.049
W	glycine	glycine	58, HMDB0000123	0.0283	-0.024
W	iminodiacetate	glycine	21025, HMDB0011753	1.45E-05	0.262
W	glutarate	lysine / nitric oxide	396, HMDB0000661	0.00872	0.05
W	homoarginine	lysine / nitric oxide	22137, HMDB0000670	0.0177	0.033
W	N-formylmethionine	methionine	2829, HMDB0001015	0.0498	-0.023
W	S-adenosylhomocysteine	methionine	42382, HMDB0000939	0.0452	-0.016
W	2-piperidinone	phytochemical / polyphenol	43400, HMDB0011749	0.0255	0.048
W	N-methylpipercolate	phytochemical / polyphenol	47101, NA	0.0352	-0.186
W	piperine	phytochemical / polyphenol	33935, HMDB0029377	0.0033	0.067
W	S-allylcysteine	phytochemical / polyphenol	43239, HMDB0034323	0.0126	0.110
W	tartronate (hydroxymalonate)	phytochemical / polyphenol	20693, HMDB0035227	0.0126	0.028
W	N1-methylinosine	purine / pyrimidine / nucleotide	48351, HMDB0002721	0.031	-0.042
W	S-adenosylhomocysteine	purine / pyrimidine / nucleotide	42382, HMDB0000939	0.0452	-0.016
W	linoleoyl ethanolamide	satiety	52608, HMDB0012252	0.000194	0.075
W	oleoyl ethanolamide	satiety	38102, HMDB0002088	0.0297	0.044
W	16a-hydroxy DHEA 3-sulfate	steroid hormone	38168, HMDB0062544	0.0363	-0.06
W	cortisone	steroid hormone	1769, HMDB0002802	0.0118	0.038
W	3-indoxyl sulfate	tryptophan	27672, HMDB0000682	0.045	5.9
W	kynurenine	tryptophan	15140, HMDB0000684	0.0192	-0.038
W	3-(4-hydroxyphenyl)lactate	tyrosine	32197, HMDB0000755	0.0474	-0.024
W	3-methoxytyrosine	tyrosine	12017, HMDB0001434	0.00501	-0.034
W	N-acetyltyrosine	tyrosine	32390, HMDB0000866	0.0498	-0.041
W	p-cresol glucuronide	tyrosine	48841, HMDB0011686	0.0307	-0.453
W	p-cresol sulfate	tyrosine	36103, HMDB0011635	0.0378	-0.08
W	N-acetylneuraminate	other: amino sugar and nucleotide sugar	32377, HMDB0000230	0.00643	-0.046
W	N-acetylaspartate	other: aspartic acid	22185, HMDB0000812	7.05E-05	0.156
W	deoxycholate	other: bile acid	1114, HMDB0000626	0.03	-0.136
W	S-adenosylhomocysteine	other: cysteine	42382, HMDB0000939	0.0452	-0.016
W	S-allylcysteine	other: cysteine	43239, HMDB0034323	0.0126	0.11
W	gamma-glutamylglycine	other: dipeptide	33949, HMDB0011667	0.0443	-0.05
W	pyroglutamine	other: glutathione	46225, HMDB0062558	0.0246	-0.044
W	glycerate	other: glyoxylate and dicarboxylate / pentose phosphate	1572, HMDB0000139	0.00902	0.029

W	tartarate	other: glyoxylate and dicarboxylate / pentose phosphate	15336, HMDB0000956	0.000424	0.047
W	N-acetylhistidine	other: histidine	33946, HMDB0032055	0.00963	-0.051
W	methyl glucopyranoside (alpha + beta)	other: monosaccharide	46144, HMDB0029965	0.0157	0.174
W	1-methylnicotinamide	other: nicotinate and nicotinamide	27665, HMDB0000699	0.025	0.043
W	gulonate	other: pentose and glucuronate	46957, HMDB0003290	0.0436	-0.072
M	4-hydroxyglutamate	arginine and proline	40499, HMDB0001344	0.0197	0.106
M	S-1-pyrroline-5-carboxylate	arginine and proline	42370, HMDB0001301	0.0424	-0.07
M	6-oxopiperidine-2-carboxylate	bio-toxin / drug / xenobiotic	43231, HMDB0061705	0.0272	0.063
M	thymol sulfate	bio-toxin / drug / xenobiotic	36095, HMDB0001878	0.00361	0.277
M	3,7-dimethylurate	caffeine	34399, HMDB0001982	0.0309	-0.204
M	5-acetylamino-6-formylamino-3-methyluracil	caffeine	34401, HMDB0011105	0.0239	-0.467
M	theobromine	caffeine	18392, HMDB0002825	0.00299	-0.2
M	2-aminoheptanoate	carnitine / fatty acid	43761, HMDB0094649	0.0247	0.077
M	arachidate (20:0)	carnitine / fatty acid	1118, HMDB0002212	0.00725	0.025
M	deoxycarnitine	carnitine / fatty acid	36747, HMDB0001161	0.0327	-0.03
M	docosahexaenoate (DHA; 22:6n3)	carnitine / fatty acid	44675, HMDB0002183	0.0348	0.054
M	eicosenoate (20:1)	carnitine / fatty acid	33587, HMDB0002231	0.0432	0.046
M	N-palmitoylglycine	carnitine / fatty acid	42092, HMDB0013034	0.0108	0.042
M	sphinganine	ceramide	17769, HMDB0000269	0.0293	-0.024
M	deoxycarnitine	dopamine / neurological	36747, HMDB0001161	0.0327	-0.030
M	S-1-pyrroline-5-carboxylate	glutamic acid / glutamine	42370, HMDB0001301	0.0424	-0.07
M	1-linoleoylglycerol (18:2)	glycerophosphlipid	27447, NA	0.0111	0.164
M	1-linoleoyl-GPG (18:2)	glycerophosphlipid	54885, NA	0.0216	0.061
M	2-linoleoylglycerol (18:2)	glycerophosphlipid	32506, HMDB0011538	0.0319	0.168
M	linoleoyl-arachidonoyl-glycerol (18:2/20:4) (m1)	glycerophosphlipid	54955, HMDB0007257	0.00291	0.26
M	oleoyl-arachidonoyl-glycerol (18:1/20:4) (m2)	glycerophosphlipid	54961, HMDB0007228	0.0225	0.156
M	phosphoethanolamine	glycerophosphlipid	1600, HMDB0000224	0.0112	-0.12
M	dimethylglycine	glycine	5086, HMDB0000092	0.0171	0.047
M	guanidinoacetate	glycine	43802, HMDB0000128	0.0459	-0.035
M	iminodiacetate	glycine	21025, HMDB0011753	0.00964	0.208
M	2-aminoadipate	lysine / nitric oxide	6146, HMDB0000510	0.036	0.089
M	homoarginine	lysine / nitric oxide	22137, HMDB0000670	0.0214	-0.05
M	methionine sulfone	methionine	44878, NA	0.0306	0.066
M	gamma-tocopherol/beta-tocopherol	phytochemical / polyphenol	52473, HMDB0001492/HMD	0.035	0.065
M	adenosine 5'-monophosphate (AMP)	purine / pyrimidine / nucleotide	32342, HMDB0000045	0.00303	-0.076
M	pseudouridine	purine / pyrimidine / nucleotide	33442, HMDB0000767	0.0303	0.042
M	5alpha-androstan-3alpha,17beta-diol monosulfate (n:steroid hormone		37186, NA	0.0169	0.096
M	5alpha-androstan-3beta,17beta-diol monosulfate (m:steroid hormone		37192, NA	0.0371	0.05
M	N-acetyltryptophan	tryptophan	33959, HMDB0013713	0.0427	0.077
M	myo-inositol	other: galactose	1124, HMDB0000211	0.0107	0.151
M	gamma-glutamylalanine	other: glutathione	37063, HMDB0006248	0.0456	-0.208
M	hydantoin-5-propionic acid	other: histidine	40473, HMDB0001212	0.0305	0.14
M	myo-inositol	other: inositol phosphate	1124, HMDB0000211	0.0107	0.151
M	nicotinamide	other: nicotinate and nicotinamide	594, HMDB0001406	0.00222	-0.136
M	myo-inositol	other: pentose and glucuronate	1124, HMDB0000211	0.0107	0.151
M	acisoga	other: spermidine	43258, HMDB0061384	0.0205	0.09
M	pyridoxate	other: vitamin	31555, HMDB0000017	0.0245	0.084

* m1, m2 indicate different moieties of that metabolite

** identifiers listed are from Metabolon and the Human Metabolome Database

NA = not available

Table S2. Plasma metabolites associating with fruit and vegetable intake in both men and women

Metabolite	beta: men	P	beta: women	P
theobromine	-0.200	0.003	-0.094	0.0335
S-1-pyrroline-5-carboxylate	-0.070	0.0424	-0.047	0.0162
homoarginine	-0.050	0.0214	0.033	0.0177
docosahexanoate	0.054	0.0348	0.065	0.0002
1-linoleoylglycerol 18:2	0.164	0.0111	0.064	0.00315
2-linoleoylglycerol 18:2	0.168	0.0319	0.107	0.00212
iminodiacetate	0.208	0.00964	0.262	1.45E-05

Table S3. Pathways enriched from 66 plasma metabolites associating with high fruit and vegetable intake in women

Pathway	FDR corr P	Contributing metabolites
Protein synthesis, amino acid biosynthesis	1.15E-06	3-methoxytyrosine, homoarginine, N-acetylaspartate, N-acetylglutamine, N-acetyltyrosine, N-formylmethionine
Waste products *	1.43E-05	1,3,7-trimethylurate, 1,7-dimethylurate, 3-methylxanthine, dopamine 3-O-sulfate, eicosapentaenoate (EPA), paraxanthine, p-cresol glucuronide, proline, S-adenosylhomocysteine, theobromine
Arginine and proline metabolism	1.20E-04	proline, S-adenosylhomocysteine, S-1-pyrroline-5-carboxylate
Tryptophan metabolism	2.83E-03	kynurenine, S-adenosylhomocysteine
Prostaglandin and leukotriene metabolism	2.83E-03	arachidonate, N-palmitoyl-sphingosine
Biosynthesis of unsaturated fatty acids	3.14E-03	arachidonate, docosahexaenoate (DHA), docosapentaenoate (n3 DPA), eicosapentaenoate (EPA)
Glycerophospholipid metabolism	3.28E-03	N-palmitoyl-sphingosine, S-adenosylhomocysteine
α -Linolenic acid and linoleic acid metabolism	3.62E-03	arachidonate, docosahexaenoate (DHA), docosapentaenoate (n3 DPA), erucate
Essential hypertension	2.09E-02	arachidonate, docosahexaenoate (DHA), eicosapentaenoate (EPA)
Glycine degradation (creatine biosynthesis)	3.28E-02	glycine, S-adenosylhomocysteine
Leukotriene biosynthesis	4.53E-02	glycine, arachidonate
Iminoglycinuria	4.59E-02	glycine, proline

* 1,3,7-trimethylurate, 1,7-dimethylurate, 3-methylxanthine, paraxanthine, and theobromine are all components of the caffeine metabolism pathway

Table S4. Pathways enriched from 38 plasma metabolites associating with high fruit and vegetable intake in men

Pathway	FDR corr P	Contributing metabolites
Arginine and proline metabolism	1.12E-04	adenosine 5'-monophosphate, guanidinoacetate, S-1-pyrroline-5-carboxylate
Glycine, serine and threonine metabolism	1.12E-04	adenosine 5'-monophosphate, dimethylglycine, guanidinoacetate
Methionine metabolism	8.90E-04	adenosine 5'-monophosphate, dimethylglycine
Glutamate metabolism	1.94E-03	adenosine 5'-monophosphate, S-1-pyrroline-5-carboxylate
Glycerophospholipid metabolism	1.94E-03	myo-inositol, phosphoethanolamine
Protein synthesis, amino acid biosynthesis	1.94E-03	2-aminoadipate, homoarginine, hydantoin-5-propionic acid
Pyrimidine metabolism	3.24E-03	adenosine 5'-monophosphate, pseudouridine
Caffeine metabolism	1.17E-02	3,7-dimethylurate, 5-acetylamino-6-formylamino-3-methyluracil, theobromine

Table S5. Plasma metabolites significantly associated with osteoporosis status

Sex	Metabolite *	Metabolite class	Identifiers **	P-value	Beta
W	N-acetyl-beta-alanine	Ala Arg Trp Tyr / protein	37432, HMDB0061880	0.010	-1.56
W	2-aminoheptanoate	carnitine / fatty acid	43761, HMDB0094649	0.025	0.73
W	N-(2-furoyl)glycine	carnitine / fatty acid	31536, HMDB0000439	0.040	0.03
W	N6,N6,N6-trimethyllysine	carnitine / fatty acid	1498, HMDB0001325	0.038	-0.72
W	lactosyl-N-nervonoyl-sphingosine (d18:1/24:1)	ceramide	57370, NA	0.012	1.07
W	lactosyl-N-palmitoyl-sphingosine (d18:1/16:0)	ceramide	53010, NA	0.025	1.69
W	oleoyl-linoleoyl-glycerol (18:1/18:2)	diacylglycerol	46799, HMDB0007219	0.044	0.28
W	1-dihomo-linolenylglycerol (20:3)	glycerophospholipid	48341, NA	0.029	0.21
W	1-stearoyl-2-linoleoyl-GPC (18:0/18:2)	glycerophospholipid	52452, HMDB0008039	0.029	1.98
W	1-stearoyl-2-oleoyl-GPE (18:0/18:1)	glycerophospholipid	42448, HMDB0008993	0.048	0.09
W	glycerate	glyoxylate and dicarboxylate / pentose phosphate	1572, HMDB0000139	0.011	-1.42
W	tartarate	glyoxylate and dicarboxylate / pentose phosphate	15336, HMDB0000956	0.036	-1.15
W	glutarate	lysine / nitric oxide	396, HMDB0000661	0.025	-1.16
W	homoarginine	lysine / nitric oxide	22137, HMDB0000670	0.009	-1.37
W	3-methyl catechol sulfate (m1)	phenylsulfate	46165, NA	0.009	0.27
W	4-vinylguaiaicol sulfate	phenylsulfate	48442, NA	0.043	0.16
W	benzoate	phytochemical and polyphenol	15778, HMDB0001870	0.032	14.12
W	S-methylmethionine	phytochemical and polyphenol	38127, HMDB0038670	0.011	-0.40
W	tartronate (hydroxymalonate)	phytochemical and polyphenol	20693, HMDB0035227	0.024	-1.29
W	threonate	phytochemical and polyphenol	27738, HMDB0000943	0.045	-0.90
W	hypoxanthine	purine / pyrimidine	3127, HMDB0000157	0.016	-0.75
W	urate	purine / pyrimidine	1604, HMDB0000289	0.015	-1.68
W	uridine	purine / pyrimidine	606, HMDB0000296	0.008	-1.80
W	5alpha-androstan-3alpha,17beta-diol monosulfate (n)	steroid hormone	37186, NA	0.035	-0.86
W	5alpha-androstan-3alpha,17beta-diol monosulfate (r)	steroid hormone	37185, NA	0.045	-3.73
W	5alpha-androstan-3alpha,17beta-diol disulfate	steroid hormone	37184, NA	0.030	-4.60
W	5alpha-androstan-3beta,17beta-diol monosulfate (m)	steroid hormone	37192, NA	0.036	-1.58
W	5alpha-androstan-3beta,17beta-diol disulfate	steroid hormone	37190, HMDB0000493	0.022	-3.25
W	androstenediol (3beta,17beta) disulfate (m1)	steroid hormone	37202, HMDB0003818	0.010	-2.02
W	androstenediol (3beta,17beta) disulfate (m2)	steroid hormone	37203, HMDB0003818	0.024	-1.12
W	androstenediol (3beta,17beta) monosulfate (m1)	steroid hormone	37211, HMDB0003818	0.012	-1.73
W	androstenediol (3beta,17beta) monosulfate (m2)	steroid hormone	37210, HMDB0003818	0.001	-1.37
W	dehydroisoandrosterone sulfate (DHEA-S)	steroid hormone	32425, HMDB0001032	0.042	-1.51
M	4-guanidinobutanoate	Ala Arg Trp Tyr / protein	15681, HMDB0003464	0.030	5.90
M	kynurenine	Ala Arg Trp Tyr / protein	15140, HMDB0000684	0.042	0.84
M	N-formylphenylalanine	Ala Arg Trp Tyr / protein	48433, NA	0.036	1.51
M	prolylglycine	Ala Arg Trp Tyr / protein	40703, HMDB0011178	0.026	2.31
M	tyramine O-sulfate	Ala Arg Trp Tyr / protein	48408, HMDB0006409	0.013	0.20
M	ibuprofen	bio-toxin / drug	17799, HMDB0001925	0.045	0.11
M	carboxyibuprofen	bio-toxin / drug	43333, HMDB0060564	0.041	0.04
M	2-hydroxyibuprofen	bio-toxin / drug	43330, HMDB0060920	0.042	0.06
M	3-carboxy-4-methyl-5-propyl-2-furanpropanoate	bio-toxin / drug	31787, HMDB0061112	0.023	0.11
M	4-hydroxychlorothalonil	bio-toxin / drug	48441, NA	0.021	-1.97
M	benzoylecgonine	bio-toxin / drug	39678, HMDB0041836	0.024	0.10
M	2-hydroxy-3-methylvalerate	branched-chain amino acids	36746, HMDB0000317	0.049	0.12
M	3-methyl-2-oxovalerate	branched-chain amino acids	15676, HMDB0003736	0.014	1.49
M	4-methyl-2-oxopentanoate	branched-chain amino acids	22116, HMDB0000695	0.042	1.24
M	alpha-hydroxyisocaproate	branched-chain amino acids	22132, HMDB0000746	0.006	1.22
M	isoleucine	branched-chain amino acids	1125, HMDB0000172	0.004	3.94
M	isovalerylglycine	branched-chain amino acids	35107, HMDB0000678	0.041	0.99
M	leucine	branched-chain amino acids	60, HMDB0000687/HMDB00	0.020	3.43
M	N-acetylisoleucine	branched-chain amino acids	33967, HMDB0061684	0.024	1.30
M	N-acetylleucine	branched-chain amino acids	1587, HMDB0011756	0.016	0.98
M	5-acetylamino-6-amino-3-methyluracil	caffeine	34424, HMDB0004400	0.043	-0.39
M	caffeic acid sulfate	caffeine	53254, HMDB0041708	0.006	0.14
M	fructose	carbon metabolism / insulin resistance	48195, HMDB0000660	0.002	0.71
M	glutaryl carnitine	carnitine / fatty acid	44664, HMDB0013130	0.047	-1.13
M	isovalerylcarnitine	carnitine / fatty acid	34407, HMDB0000688	0.006	1.21
M	linoleate (18:2n6)	carnitine / fatty acid	1105, HMDB0000673	0.028	-2.57
M	N-(2-furoyl)glycine	carnitine / fatty acid	31536, HMDB0000439	0.012	0.05
M	vanillylmandelate	catecholamine	1567, HMDB0000291	0.023	1.43
M	1-(1-enyl-palmitoyl)-GPC (P-16:0)	glycerophospholipid	52474, HMDB0010407	0.026	-4.89
M	1-palmitoyl-2-arachidonoyl-GPC (16:0/20:4n6)	glycerophospholipid	52462, HMDB0007982	0.031	3.03
M	1-stearoyl-2-arachidonoyl-GPC (18:0/20:4)	glycerophospholipid	42450, HMDB0008048	0.033	2.84
M	choline phosphate	glycerophospholipid	34396, HMDB0001565	0.023	0.81
M	threonine	glycine serine threonine	1284, HMDB0000167	0.030	-2.73
M	2-keto-3-deoxy-gluconate	glyoxylate and dicarboxylate / pentose phosphate	48141, HMDB0001353	0.038	0.31
M	ribonate	glyoxylate and dicarboxylate / pentose phosphate	27731, HMDB0000867	0.030	0.67
M	N6-carboxymethyllysine	lysine / nitric oxide	36713, NA	0.044	-0.82
M	pipecolate	lysine / nitric oxide	1444, HMDB0000070	0.039	0.27

M	hippurate	phytochemical and polyphenol	15753, HMDB0000714	0.041	-0.62
M	3-hydroxypyridine sulfate	pyridine	48448, NA	0.023	0.14
M	androstenediol (3beta,17beta) monosulfate (m1)	steroid hormone	37211, HMDB0003818	0.002	1.31

* m1, m2 indicate different moieties of that metabolite

** identifiers listed are from Metabolon and the Human Metabolome Database

Ala Arg Trp Tyr / protein = compounds involved in alanine, arginine, tryptophan, tyrosine or protein metabolism

NA = not available

Table S6. Significantly enriched pathways based on 33 osteoporosis-associated metabolites in women

Pathway	FDR corr P	Contributing metabolites
Phosphatidylcholine biosynthesis	1.41E-04	1-stearoyl-2-linoleoyl-GPC (18:0/18:2), 1-stearoyl-2-oleoyl-GPE (18:0/18:1)
Phosphatidylethanolamine biosynthesis	2.96E-02	oleoyl-linoleoyl-glycerol (18:1/18:2), 1-stearoyl-2-oleoyl-GPE (18:0/18:1)
Degenerative disc disease	2.29E-04	hypoxanthine, urate, uridine
Organic anion transport	6.79E-03	dehydroisoandrosterone sulfate (DHEA-S), urate
SLC-mediated transmembrane transport	6.79E-03	dehydroisoandrosterone sulfate (DHEA-S), homoarginine, hypoxanthine, urate, uridine
Transport of vitamins, nucleosides, and related molecules	6.79E-03	dehydroisoandrosterone sulfate (DHEA-S), hypoxanthine, uridine
Nucleobase catabolism	1.05E-02	hypoxanthine, urate, uridine
Amino acid biosynthesis	1.53E-02	homoarginine, N6,N6,N6-trimethyllysine
Steroid hormones	1.68E-02	5alpha-androstan-3beta,17beta-diol disulfate, androstenediol (3beta,17beta) monosulfate
Waste products	3.25E-02	dehydroisoandrosterone sulfate (DHEA-S), hypoxanthine, urate
Glyoxylate and dicarboxylate metabolism	4.27E-02	glycerate, tartarate
Lysine metabolism	4.27E-02	glutarate, N6,N6,N6-trimethyllysine
Glycerophospholipid metabolism	4.27E-02	1-stearoyl-2-linoleoyl-GPC (18:0/18:2), 1-stearoyl-2-oleoyl-GPE (18:0/18:1)

Table S7. Significantly enriched pathways based on 40 osteoporosis-associated metabolites in men

Pathway	FDR corr P	Contributing metabolites
Valine, leucine and isoleucine biosynthesis	1.97E-04	4-methyl-2-oxopentanoate, isoleucine
Isoleucine biosynthesis, pyruvate => isoleucine	1.86E-02	isoleucine, threonine
Essential amino acids	1.97E-04	isoleucine, threonine
Aminoacyl-tRNA biosynthesis	3.96E-04	isoleucine, threonine
Linoleic acid metabolism, phospholipid => linoleate	1.61E-03	1-stearoyl-2-arachidonoyl-GPC (18:0/20:4), linoleate (18:2n6)
Glycine, serine and threonine metabolism	2.14E-03	choline phosphate, threonine
Phosphatidylcholine (PC) biosynthesis, choline => PC	4.78E-03	1-stearoyl-2-arachidonoyl-GPC (18:0/20:4), choline phosphate
Glycerophospholipid metabolism	8.88E-03	1-(1-enyl-palmitoyl)-GPC (P-16:0), 1-stearoyl-2-arachidonoyl-GPC (18:0/20:4), choline phosphate
Protein synthesis, amino acid biosynthesis	1.56E-02	4-guanidinobutanoate, pipecolate
Waste products	1.87E-02	2-hydroxyibuprofen, benzoylecgonine, carboxyibuprofen, hippurate

Results from MetaboAnalyst indicated a trend toward significance for the valine, leucine and isoleucine biosynthesis pathway ($p = 0.087$)

Table S8. Metabolite-inhibitor relationships for the steroid hormone biosynthesis pathway

Numeral : Biosynthesis module *	Metabolite	p-value	beta direction **	Inhibited E.C.# : Gene symbols
3 : progesterone--THDOC; 6 : testosterone--androstan-3 α ,17 β -diol	linoleate (18:2n6)	0.058	pos	1.3.1.22 : SRD5A1, SRD5A2, SRD5A3
	oleate/vaccenate (18:1)	0.054	pos	
	palmitate (16:0)	0.060	pos	
	piperine	0.003	pos	
	stearate (18:0)	0.097	pos	
4 : progesterone--5 α -pregnane-3 α ,20 α -diol	1-methylnicotinamide	0.025	pos	1.1.1.149 : AKR1C1
5 : cortisol--cortisone; 7 : testosterone--estradiol-17 β	arachidonate (20:4n6)	0.042	pos	1.1.1.62 : HSD17B1, HSD17B2, HSD17B6, HSD17B7, HSD17B8, HSD17B12
	linoleate (18:2n6)	0.058	pos	
	oleate/vaccenate (18:1)	0.054	pos	
1 : cholesterol--progesterone; 2 : cholesterol--testosterone	deoxycholate	0.030	neg	3.1.6.2 : STS
6 : testosterone--androstan-3 α ,17 β -diol	ursodeoxycholate	0.083	neg	1.1.1.357 : AKR1C2, AKR1C3, AKR1C4
7 : testosterone--estradiol-17 β	naproxen	0.026	neg	1.1.1.51 : AKR1C3
		0.026	neg	2.8.2.4 : SULT1E1

* Corresponding to Figure 4 (SterHorm_path) where the metabolite-enzyme pair is predicted to inhibit partially a biosynthesis module

** a negative beta is interpreted as supporting a reduced capacity for enzyme inhibition

THDOC, tetrahydrodeoxycorticosterone (3 α ,21-dihydroxy-5 α -pregnan-20-one)

Table S9. Abbreviations of osteoporosis-associated metabolites displayed in heat maps showing correlation between those metabolites and fruit/vegetables

Group *	Heat map label	Metabolite	Metabolon ID	P-value	beta
M	1eP-GPC	1-(1-enyl-palmitoyl)-GPC (P-16:0)	52474	0.026	-4.89
W	1dLG	1-dihomo-linolenylglycerol (20:3)	48341	0.029	0.21
M	1P2A-GPC	1-palmitoyl-2-arachidonoyl-GPC (16:0/20:4n6)	52462	0.031	3.03
M	1S2A-GPC	1-stearoyl-2-arachidonoyl-GPC (18:0/20:4)	42450	0.033	2.84
W	1S2L-GPC	1-stearoyl-2-linoleoyl-GPC (18:0/18:2)	52452	0.029	1.98
W	1S2O-GPE	1-stearoyl-2-oleoyl-GPE (18:0/18:1)	42448	0.048	0.09
W	2-aHep	2-aminoheptanoate	43761	0.025	0.73
M	2h3mv	2-hydroxy-3-methylvalerate	36746	0.049	0.12
M	2hibu	2-hydroxyibuprofen	43330	0.042	0.06
M	2k3dg	2-keto-3-deoxy-gluconate	48141	0.038	0.31
M	CMPF	3-carboxy-4-methyl-5-propyl-2-furanpropanoate	31787	0.023	0.11
M	3hps	3-hydroxypyridine sulfate	48448	0.023	0.14
W	3mCats	3-methyl catechol sulfate (m1)	46165	0.009	0.27
M	3m2oval	3-methyl-2-oxovalerate	15676	0.014	1.49
M	4gbut	4-guanidinobutanoate	15681	0.03	5.9
M	4hchlorot	4-hydroxychlorothalonil	48441	0.021	-1.97
M	4m2open	4-methyl-2-oxopentanoate	22116	0.042	1.24
W	4-vGuas	4-vinylguaiacol sulfate	48442	0.043	0.16
M	AAMU	5-acetylamino-6-amino-3-methyluracil	34424	0.043	-0.39
W	5Andro3a17bds	5alpha-androstan-3alpha;17beta-diol disulfate	37184	0.03	-4.6
W	5Andro3a17bms1	5alpha-androstan-3alpha;17beta-diol monosulfate (m	37186	0.035	-0.86
W	5Andro3a17bms2	5alpha-androstan-3alpha;17beta-diol monosulfate (m	37185	0.045	-3.73
W	5Andro3b17bds	5alpha-androstan-3beta;17beta-diol disulfate	37190	0.022	-3.25
W	5Andro3b17bms	5alpha-androstan-3beta;17beta-diol monosulfate (m2	37192	0.036	-1.58
M	a-hicap	alpha-hydroxyisocaproate	22132	0.006	1.22
W	AndroE3b17bds1	androstenediol (3beta;17beta) disulfate (m1)	37202	0.01	-2.02
W	AndroE3b17bds2	androstenediol (3beta;17beta) disulfate (m2)	37203	0.024	-1.12
W	AndroE3b17bms1	androstenediol (3beta;17beta) monosulfate (m1)	37211	0.012	-1.73
M	AndroE3b17bms	androstenediol (3beta;17beta) monosulfate (m1)	37211	0.002	1.31
W	AndroE3b17bms2	androstenediol (3beta;17beta) monosulfate (m2)	37210	0.001	-1.37
W	benzoate	benzoate	15778	0.032	14.12
M	bEcg	benzoylecgonine	39678	0.024	0.1
M	caffas	caffeic acid sulfate	53254	0.006	0.14
M	cibu	carboxyibuprofen	43333	0.041	0.04
M	cholineP	choline phosphate	34396	0.023	0.81
W	DHEA-S	dehydroisoandrosterone sulfate (DHEA-S)	32425	0.042	-1.51
M	fructose	fructose	48195	0.002	0.71
W	glutarate	glutarate	396	0.025	-1.16
M	glutcarn	glutaryl carnitine	44664	0.047	-1.13
W	glycerate	glycerate	1572	0.011	-1.42
M	hippurate	hippurate	15753	0.041	-0.62
W	homoArg	homoarginine	22137	0.009	-1.37
W	hypoxanthine	hypoxanthine	3127	0.016	-0.75
M	ibu	ibuprofen	17799	0.045	0.11
M	Ile	isoleucine	1125	0.004	3.94
M	ivalcarn	isovaleryl carnitine	34407	0.006	1.21
M	ivalGly	isovaleryl glycine	35107	0.041	0.99
M	kynurenine	kynurenine	15140	0.042	0.84
W	lacN-nerv-sph	lactosyl-N-nervonoyl-sphingosine (d18:1/24:1)	57370	0.012	1.07
W	lacN-palm-sph	lactosyl-N-palmitoyl-sphingosine (d18:1/16:0)	53010	0.025	1.69
M	Leu	leucine	60	0.02	3.43
M	linoleate	linoleate (18:2n6)	1105	0.028	-2.57
W	N2fGly	N-(2-furoyl)glycine	31536	0.04	0.03
M	N2fGly	N-(2-furoyl)glycine	31536	0.012	0.05
W	3mLys	N6;N6;N6-trimethyllysine	1498	0.038	-0.72
M	N6-cmLys	N6-carboxymethyllysine	36713	0.044	-0.82
W	Nac-Ala	N-acetyl-beta-alanine	37432	0.01	-1.56
M	N-acetylIle	N-acetyl isoleucine	33967	0.024	1.3
M	N-acetylLeu	N-acetyl leucine	1587	0.016	0.98
M	N-formylPhe	N-formylphenylalanine	48433	0.036	1.51
W	Omega-3	omega-3 fatty acids (18:1/18:2)	46799	0.044	0.38

Figure S1

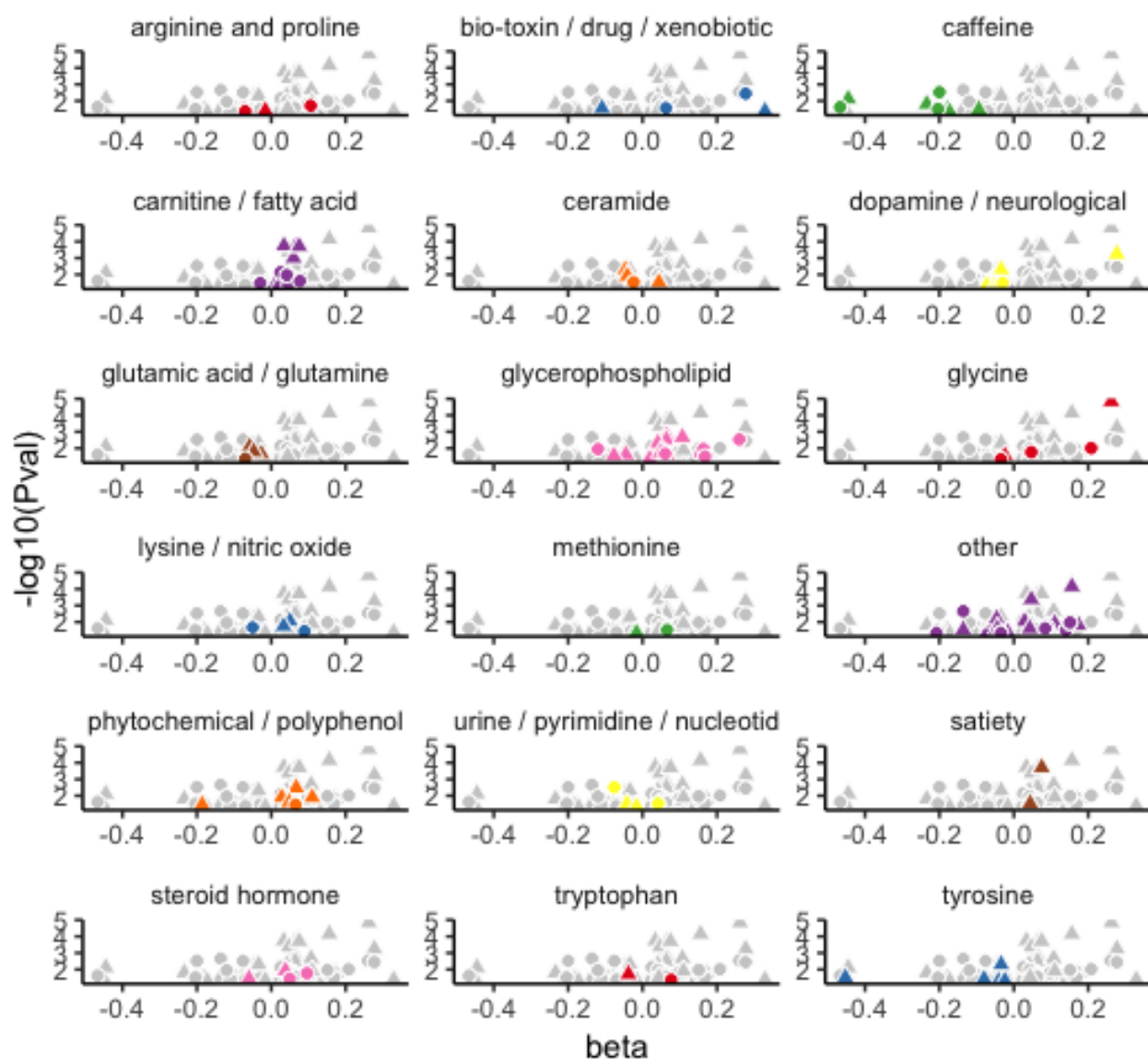


Figure S1. Plasma metabolites significantly associated with FV intake. Each panel shows a plot of beta vs $-\log_{10}(\text{P-value})$ for all metabolites significantly associated with OS (gray) and a specific metabolite class highlighted in color. Data for women are plotted with triangles, for men with circles, and are derived from **Table S1**, which lists 66 metabolite-FV associations for women and 38 for men.

Figure S2

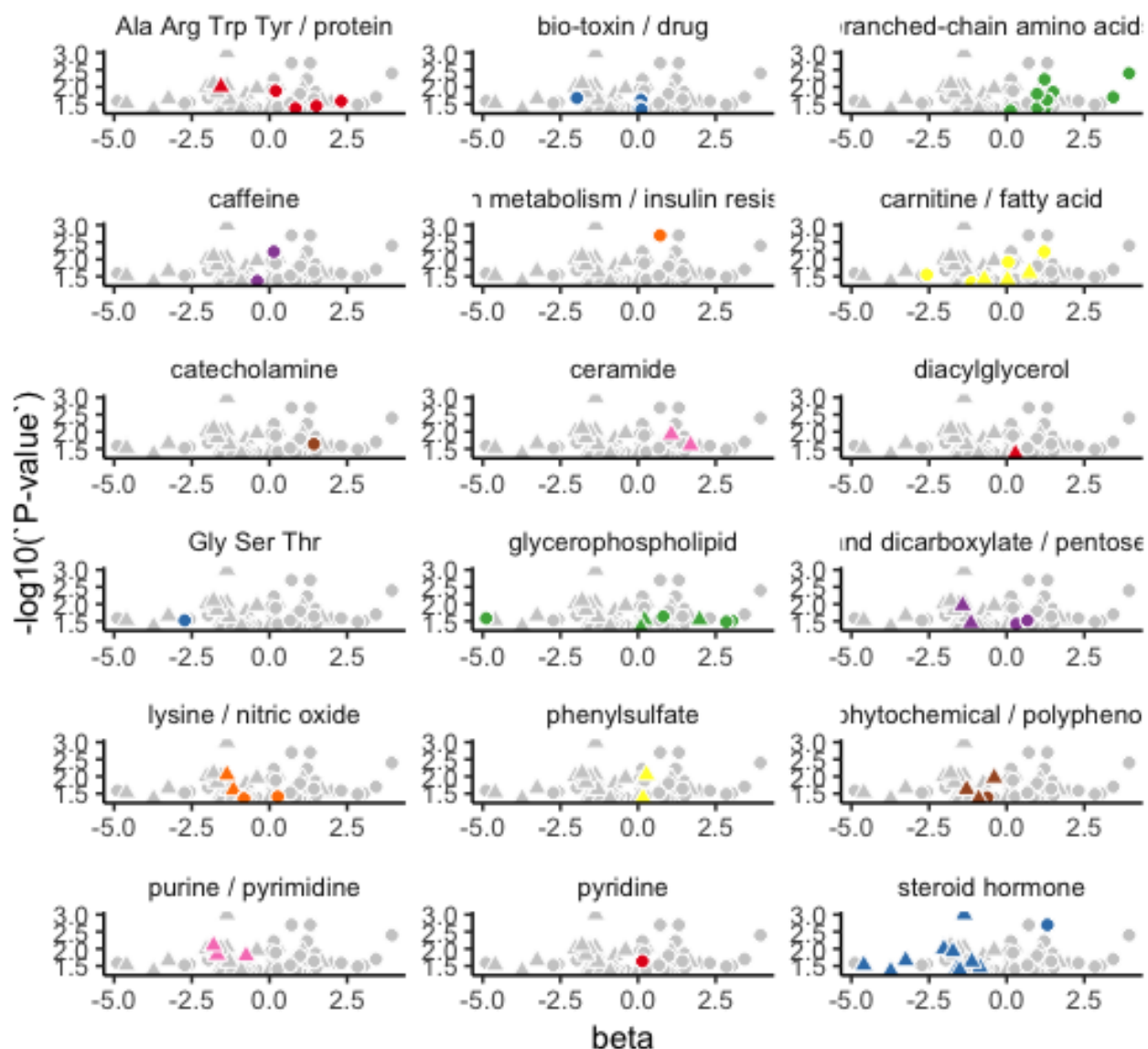


Figure S2. Plasma metabolites significantly associated with OS status. Each panel depicts a volcano plot, β vs $-\log_{10}(P\text{-value})$, for all metabolites significantly associated with OS (gray) and a distinct metabolite class highlighted in color. Data for women are plotted with triangles, for men with circles, and are derived from **Table S5**, which lists 33 metabolite-FV associations for women and 40 for men.

Figure S3

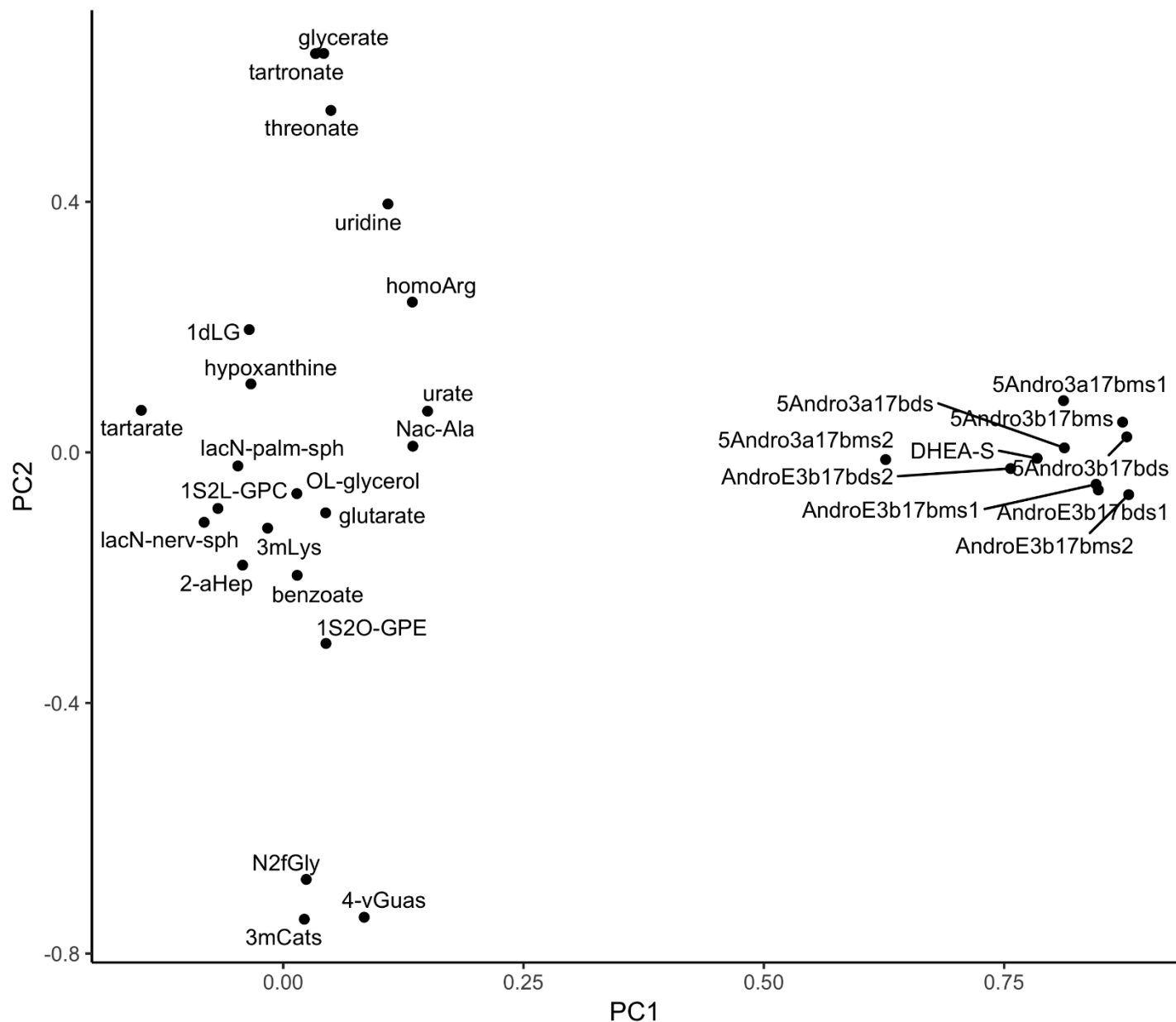


Figure S3. PCA of OS-associated metabolites in BPROS women. OS-associated metabolites are plotted by factor 1 (PC1) vs factor 2 (PC2), which in turn represent 21.2% and 10.0% of the total variance. The group of ten steroid hormone metabolites all have highly positive PC1 values and form a tight cluster. Abbreviations for metabolites are defined in **Table S9**.

Figure S4

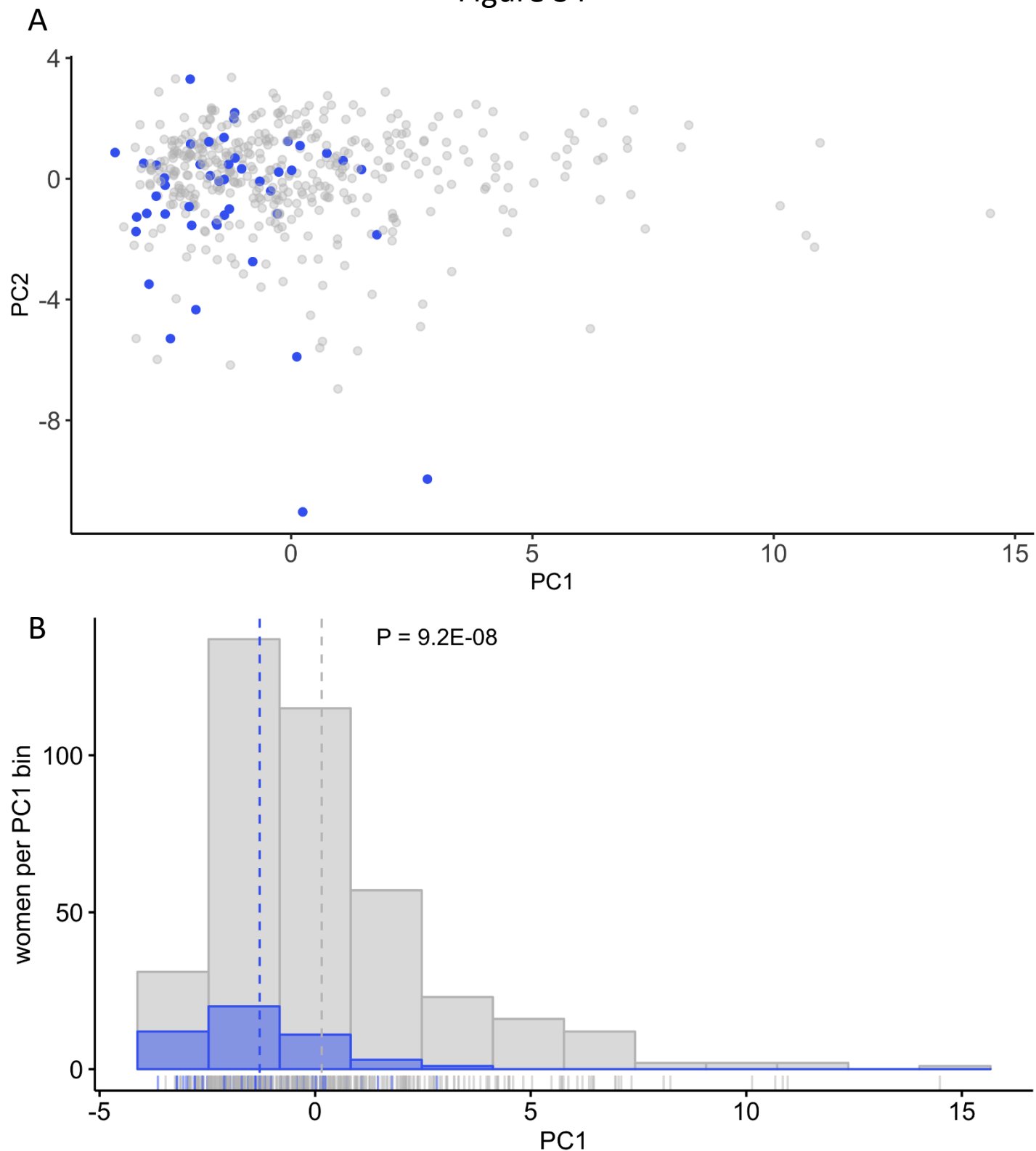


Figure S4. PC1 values are a strong indicator of OS status in BPROS women. A) Female participants are plotted according to PC1 and PC2 values with OS status depicted as gray without and blue with osteoporosis. B) A histogram of 12 evenly spaced bins of PC1 values indicates that the mean PC1 values (dotted line) and the distribution of all values for women with OS are shifted toward lower PC1 values than for women without disease ($P=9.2E-08$). Running along the x-axis is a density plot of all women based on their PC1 values, colored by OS status.

Figure S5

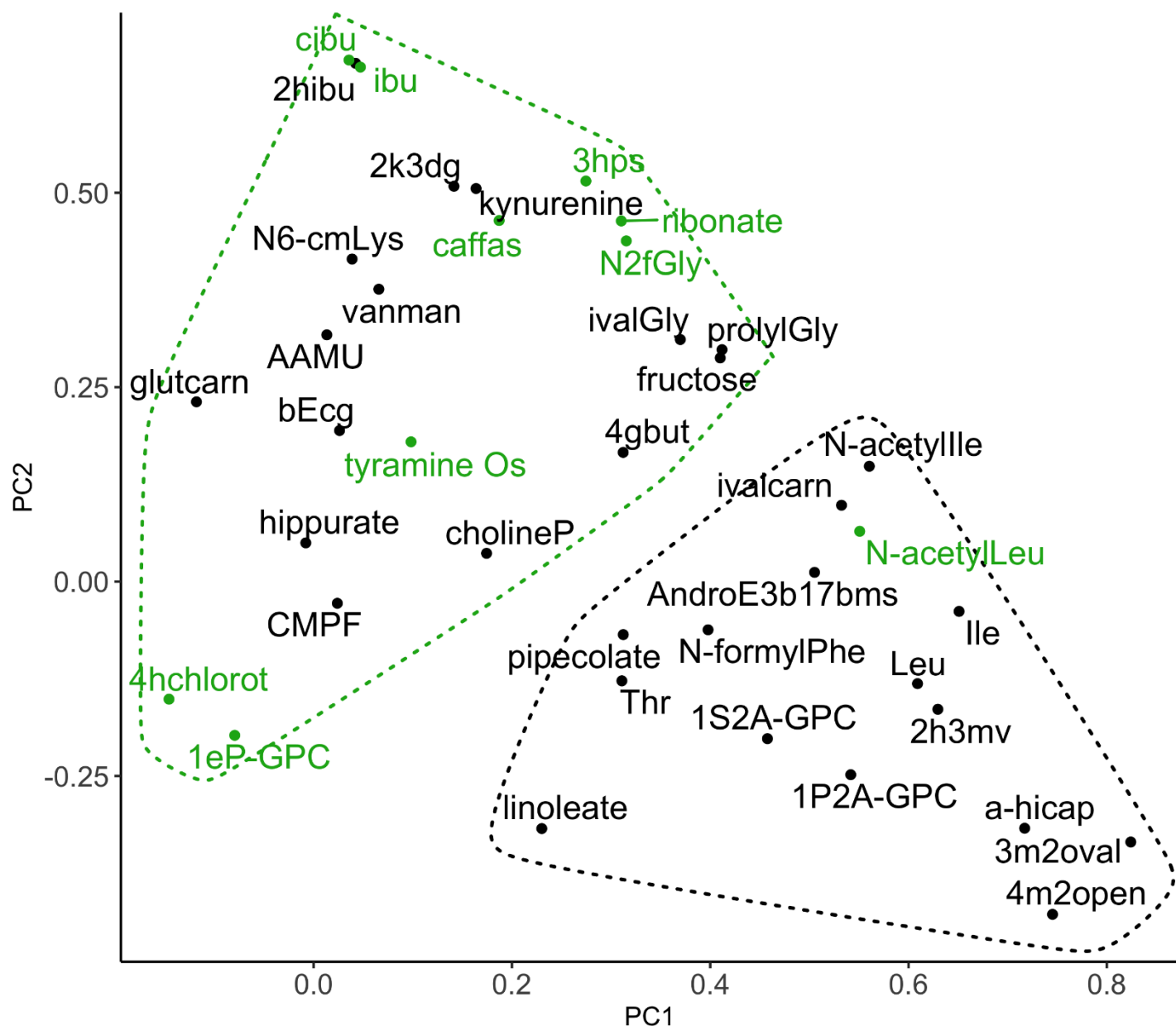


Figure S5. PCA of OS-associated metabolites in BPROS men. OS-associated metabolites are plotted by factor 1 (PC1) vs factor 2 (PC2), which represent 15.1% and 10.9% of the total variance, respectively. Green data points are those metabolites whose correlations with FV factor 6 (dark leafy greens, all $P < 0.10$) are exactly opposite to the association with OS incidence, per **Figure 3B**. Abbreviations for metabolites are defined in **Table S9**.