

Table of contents:

Supplementary text files 3

 S1 Text. Supplementary methods: Exposure assessment and calculation of trend 3

 S2 Text. Supplementary methods: Data collection of covariates 3

Supplementary Tables 11

 S1 Table. Baseline distribution of meat intake of included UK Biobank participants..... 11

 S2 Table. Baseline characteristics by red and processed meat intake 12

 S3 Table. Baseline characteristics by poultry intake 15

 S4 Table. Hazard ratios and 95% confidence intervals of cancer incidence by site according to total meat intake in UK Biobank..... 18

 S5 Table. Hazard ratios and 95% confidence intervals of cancer incidence by site according to red and processed meat intake in UK Biobank 21

 S6 Table. Hazard ratios and 95% confidence intervals of cancer incidence by site according to red meat intake in UK Biobank..... 24

 S7 Table. Hazard ratios and 95% confidence intervals of cancer incidence by site according to processed meat intake in UK Biobank 27

 S8 Table. Hazard ratios and 95% confidence intervals of cancer incidence by site according to poultry intake in UK Biobank 30

 S9 Table. Multivariable adjusted hazard ratios and 95% confidence intervals of colorectal, colon and rectal cancer incidence by meat type and sex in UK Biobank* 33

Supplementary figures 35

 S1 Fig. Associations of total meat intake and cancer incidence by cancer site (per 100g/day) when excluding first 2 years of follow-up (A, n = 459,363) and including only never smokers (B, n = 256,009)* 35

 S2 Fig. Associations of red and processed meat intake and cancer incidence by cancer site (per 70g/day) when excluding first 2 years of follow-up (A, n = 459,713) and including only never smokers (B, n = 256,182)* 37

 S3 Fig. Associations of red meat intake and cancer incidence by cancer site (per 50g/day) when excluding first 2 years of follow-up (A, n = 460,288) and including only never smokers (B, n = 256,545)* 39

 S4 Fig. Associations of processed meat intake and cancer incidence by cancer site (per 20g/day) when excluding first 2 years of follow-up (A, n = 464,736) and including only never smokers (B, n = 258,827)* 41

S5 Fig. Associations of poultry intake and cancer incidence by cancer site (per 30g/day) when excluding first 2 years of follow-up (A, n = 464,897) and including only never smokers (B, n = 259,040)* 43

Supplementary text files

S1 Text. Supplementary methods: Exposure assessment and calculation of trend

Information on meat intake was derived from five questions included in the touchscreen questionnaire: 'How often do you eat processed meats (such as bacon, ham, sausages, meat pies, kebabs, burgers, chicken nuggets)', 'How often do you eat chicken, turkey or other poultry? (Do not count processed meats)', 'How often do you eat beef? (Do not count processed meats)', 'How often do you eat lamb/mutton? (Do not count processed meats)' and 'How often do you eat pork? (Do not count processed meats such as bacon or ham)'. As described in the main manuscript, these were used to differentiate intakes of red, processed meat and poultry, and additionally combined to intakes of red and processed meat and total meat. Intakes were categorised into three to four groups depending on the distribution of the data.

To calculate a trend in risk the data from the touchscreen questionnaire was combined with data from a second diet questionnaire, the Oxford WebQ. In 2009 this additional questionnaire on dietary intake the day before was added to the data collection [1]. The Oxford WebQ is a self-administered web-based 24 hour recall questionnaire of frequency from a set food list (206 items) [2]. Participants recruited after introduction of the Oxford WebQ completed this questionnaire at the baseline assessment centre (n = 70,716). All participants who had agreed to being re-contacted by UK Biobank and had provided email addresses (approximately 320,000 participants) were invited to complete the Oxford WebQ online at home on 4 occasions during the follow-up period, February – April 2011, June – August 2011, October – December 2011 and April to June 2012 [3]. To obtain mean meat intake in each touchscreen intake group we selected a subsample of 69,076 participants, who had completed a minimum of three WebQ questionnaires to account for daily variation in diet, who did not suffer from any cancer (excluding non-melanoma skin cancer ICD-10 C44) when completing any of these questionnaires, and who had at no time reported energy intakes outside of 2,093 to 14,654 kJ for women, 3,349 to 16,747 kJ for men and unusual eating or drinking due to illness or fasting [4]. Meat items were chosen to closely match the touchscreen [5]. First, mean meat intake was averaged across WebQ questionnaires for each participant in the subsample. Second, the average meat intake of each touchscreen category was assigned to the participants of the subsample with re-measured 24-h dietary recall based on the WebQ [6]. This method was used to calculate a trend in risk per increment and reduce measurement error including regression dilution [7].

Trends in risk are expressed in increments of 50 g/day for red meat intake, 20 g/day for processed meat intake, 30 g/day for poultry intake, 70 g/day for red and processed meat intake and 100 g/day for total meat intake. Increments were chosen based on the approximate difference between mean intakes based on responses to the WebQ in the highest and the lowest categories for each meat-type in our cohort.

S2 Text. Supplementary methods: Data collection of covariates

Covariates were chosen based on the literature and availability of data at baseline.

Age:

Age at recruitment was recorded at the reception when attending the baseline assessment centre. We then categorised age into 6 groups: <45, 45-<50, 50-<55, 55-<60, 60-<65 and ≥65 years.

Region:

Region refers to the respective baseline assessment centres which were based in Barts, Hounslow, Croydon, Swansea, Wrexham, Cardiff, Stockport, Manchester, Liverpool, Bury, Newcastle upon Tyne, Middlesbrough, Leeds, Sheffield, Stoke, Birmingham, Nottingham, Oxford, Reading, Bristol, Glasgow, and Edinburgh. These regions were grouped as follows: London (Barts, Hounslow and Croydon), Wales (Wrexham, Swansea and Cardiff), North-West (Stockport, Manchester, Liverpool and Bury), North-East (Newcastle and Middlesbrough), Yorkshire and Humber (Leeds and Sheffield), West Midlands (Stoke and Birmingham), East Midlands (Nottingham), South-East (Oxford, Reading), South-West (Bristol) and Scotland (Glasgow and Edinburgh).

Ethnicity:

Ethnicity was assessed using one overall question on ethnicity 'What is your ethnic group?' allowing for 'White', 'Mixed', 'Asian or Asian British', 'Black or Black British', 'Chinese', 'Other ethnic group', 'Do not know' or 'Prefer not to answer' and four supporting questions within groups. Ethnicity was categorised into 4 groups: 'White' was defined as either answering white, British, Irish or any other white background; 'Asian or Asian British' was defined as Asian or Asian British, Chinese, Indian, Pakistani, Bangladeshi or any other Asian background; 'Black or Black British' was defined as Black or Black British, Caribbean, African or any other Black background; 'Mixed Race or other' was defined as reporting either any other ethnic groups or mixed ethnicity; participants with missing data, reporting they did not know or preferred not to answer were grouped as 'unknown' (0.6%). An alternative variable with three categories ('White', 'Non-White' and 'unknown'), was used in analyses of cancer sites where there were no or too few cases in each ethnic group other than white (oral, oesophagus, stomach and melanoma skin cancer).

Townsend deprivation score:

Material deprivation was measured with the Townsend index. Participants were assigned a score based on their postcode at assessment. The Townsend index is derived from four variables: percentage unemployment, percentage overcrowded households, percentage of people with no car ownership and percentage of non-home owners [8]. Negative values indicate areas with relative affluence with low material deprivation, positive indicate areas with high material deprivation [9]. For analyses the index was categorised into quintiles (Q1: mean -4.69, Q2: mean -3.34, Q3: mean -2.09, Q4: mean -0.09, Q5: mean 3.78). Participants without Townsend index information were categorised as 'unknown' (0.1%).

Qualification:

Highest qualification was assessed within the touchscreen questionnaire 'Which of the following qualifications do you have?' with the options 'College or University degree', 'A levels/AS levels or equivalent', 'O levels/GCSEs or equivalent', 'CSEs or equivalent', 'NVQ or HND or HNC or

equivalent', 'Other professional qualifications e.g.: nursing, teaching', 'None of the above' and 'Prefer not to answer'. Qualification was then categorised into three groups: the highest qualifications included 'College or University degree', 'NVQ or HND or HNC or equivalent', 'Other professional qualifications e.g.: nursing, teaching' and are referred to as College or university degree/vocational qualification; the intermediate qualifications included 'A levels/AS levels or equivalent' and are referred to as national examination at age 17-18; and the lowest level of qualifications included 'O levels/GCSEs or equivalent', 'CSEs or equivalent' and are referred to as national examination at age 16. Participants who had answered 'None of the above' or 'prefer not to answer' or who had not answered the question were categorised as 'other/unknown' (18.7%).

Employment:

Current employment status was assessed within the touchscreen questionnaire with the question 'Which of the following describes your current situation?' allowing for multiple answers: 'In paid employment or self-employed', 'Retired', 'Looking after home and/or family', 'Unable to work because of sickness or disability', 'Unemployed', 'Doing unpaid or voluntary work', 'Full or part time student', 'None of the above' and 'Prefer not to answer'. Participants who reported being in paid employment or self-employed were grouped into 'in paid employment', retired participants were grouped into 'pension', those reporting no paid employment (only reporting caring responsibilities, being a student, unemployed or inability to work) were grouped into 'not in paid employment' and participants who did not answer, preferred not to answer or deemed no answer to fit were grouped into an 'unknown' category (1.2%).

Living with a spouse or partner:

Living with a partner was defined as having answered the question 'How are the other people who live with you related to you?' with 'Husband, wife or partner' within the touchscreen questionnaire. Participants with no information on this or who preferred not to answer were categorised as unknown (0.4%).

Height:

Height was measured at baseline assessment with a Seca 240 cm height measure using a standardised protocol and categorised into sex-specific quintiles (Women: Q1: mean 154 cm, Q2: mean 160 cm, Q3: mean 163 cm, Q4: mean 166 cm, Q5: mean 172 cm; Men: Q1: mean 167 cm, Q2: mean 173 cm, Q3: mean 176 cm, Q4: mean 179 cm, Q5: mean 185 cm). Where height measurements were missing participants were categorised into an 'unknown' group (0.5%).

Body mass index (BMI):

Weight was measured at baseline assessment using a Tanita BC418MA body composition analyser as part of Bioimpedance measurement. For participants that did not participate in Bioimpedance analysis body weight was based on measurement using a standard scale. Body mass index (BMI) was calculated as weight in kilograms divided by height in metres squared and categorised into sex-specific quintiles (Women: Q1: mean 21 kg/m², Q2: mean 24 kg/m², Q3: mean 26 kg/m², Q4: mean 29 kg/m², Q5: mean 35 kg/m²; Men: Q1: mean 23 kg/m², Q2: mean 26 kg/m², Q3: mean 27 kg/m²,

Q4: mean 29 kg/m², Q5: mean 34 kg/m²). Where height and/or weight measurements were missing participants were categorised into an 'unknown' group (0.6%).

Smoking:

Current smoking status was derived from the touchscreen questionnaires at baseline 'Do you smoke tobacco now?' with the options 'Yes, on most or all days', 'Only occasionally', 'No' and 'Prefer not to answer' and 'In the past, how often have you smoked tobacco?' with the options 'Smoked on most or all days', 'Smoked occasionally', 'Just tried once or twice', 'I have never smoked', 'Prefer not to answer'. Number of cigarettes smoked per day was obtained from the question 'About how many cigarettes do you smoke on average each day?' apart from choosing a number, participants could answer, 'less than one', 'do not know' and 'prefer not to answer'. Using these two questions, smoking status was categorised into 5 groups 'never smoker', 'former smoker', 'current smoker <15 cigarettes/day', 'current smoker ≥15 cigarettes/day' and 'current smoker, amount unknown' and 'unknown' smoking status (0.6%).

Physical activity:

Physical activity was assessed using a list of questions within the baseline touchscreen questionnaire that were adapted from the short form International Physical activity questionnaire (IPAQ). The questionnaire was validated in adults across 12 countries [10]. The questionnaire assesses frequency, duration and of three types of activity walking, moderate and vigorous activity. In UK Biobank the question on duration was only asked if participants answered the question on frequency with a number other than zero. Physical activity data was cleaned according to the IPAQ protocol [11]. Excess metabolic equivalents (METs) were calculated by multiplying the sum of walking time per week with 2.3, moderate activity time per week with 3.0 and vigorous activity per week with 7.0 excess METs. Where a type of activity was missing but others were available this type was treated as zero METs of this activity. Excess METs include only additional activity above basal resting metabolic rates [12, 13]. Physical activity was then categorised into 3 groups (high, moderate, low) using cut-off of over 50 excess MET per week, between 10 and 50 excess METs per week and less than 10 excess MET per week. These cut-off have been used by Perez-Cornago et al. [14]. Participants with missing information and participants who reported they were unable to walk were grouped in an 'unknown' group (4.0%).

Alcohol intake:

Alcohol intake was assessed with 6 questions covering *monthly* intake of red wine 'In an average month, how many glasses of red wine would you drink? (There are six glasses in an average bottle)', white wine or champagne 'In an average month, how many glasses of white wine or champagne would you drink? (There are six glasses in an average bottle)', beer plus cider 'In an average month, how many pints of beer or cider would you drink? (Include bitter, lager, stout, ale, Guinness)', spirits 'In an average month, how many measures of spirits or liqueurs would you drink? (there are 25 standard measures in a normal sized bottle; spirits include drinks such as whisky, gin, rum, vodka, brandy)', and fortified wine 'In an average month, how many glasses of fortifies wine would you drink? (There are 12 glasses in an average bottle) (Fortified wines include drinks such as sherry, port,

vermouth); 6 questions covering *weekly* intake of the above types of alcoholic beverages, and one questions on overall alcohol intake frequency 'About how often do you drink alcohol?' which included a scale of 'Daily or almost daily', 'Three or four times a week', 'Once or twice a week', 'One to three times a month', 'Special occasions only', 'Never' and 'Prefer not to answer'. Red wine, white wine, spirits and fortified wines were assigned an average of 10 g alcohol per serving, beer and cider 20g alcohol per serving. Total drinking per day was calculated from total alcohol intake per week and month, where weekly intakes were unavailable. Total drinking was categories into 4 groups: 'non-drinker', '<1 g/day', '1-<10 g/day', '10-<20 g/day', '≥20 g/day' and 'unknown' (0.7%). Participants reporting their overall drinking frequency as drinking only at special occasions were added to the group of those drinking less than 1g/day and those reporting never drinking alcohol were categorised as never-drinkers.

Total fruit and vegetable intake:

Fruit and vegetable intake was based on touchscreen questions regarding cooked vegetables 'On average how many heaped tablespoons of cooked vegetables would you eat per day? (Do not include potatoes; put '0' if you do not eat any)', raw vegetables 'On average how many heaped tablespoons of salad or raw vegetables would you eat per day? (Include lettuce, tomato in sandwiches; put '0' if you do not eat any)', questions included a depiction of what a heaped tablespoon of these types of vegetables would look like on an average sized plate, and fresh fruit 'About how many pieces of fresh fruit would you eat per day? (Count one apple, one banana, 10 grapes etc. as one piece; put '0' if you do not eat any)'. We considered one serving of either fruit or vegetables as one piece of fruit and two heaped tablespoon of vegetables, respectively. The sum of servings of either fruit or vegetables was categorised as '≤3 servings/day', '3-<4 servings/day', '4-<6 servings/day', '≥6 servings/day' and 'unknown' (2.3%).

Estimated cereal fibre intake:

Fibre intake from bread and cereal was estimated based on a method used by Bradbury at al. in the same dataset, and all details can be found in the original publication [5]. Briefly, fibre intake was calculated by multiplying frequency of intakes with fibre content of the type of bread and cereal reported being mainly eaten. Frequency of bread and cereal intake was based on the questions 'How many slices of bread do you eat each week' and 'How many bowls of cereal do you eat a week?' with an open ended answer, and additional options less than one, do not know or prefer not to answer. If these questions were answered with one or more times a second question was asked ('What type of bread do you mainly eat?') with possible answers 'White', 'Brown', 'Wholemeal or wholegrain', 'Other type of bread', 'Do not know' and 'Prefer not to answer' and respectively 'What type of cereal do you mainly eat?' with possible answers 'Bran cereal (e.g. All Bran, Branflakes)', 'Biscuit cereal (e.g. Weetabix)', 'Oat cereal (e.g. Ready Brek, porridge)', 'Muesli/ Other (e.g. Cornflakes, Frosties)', 'Do not know' and 'Prefer not to answer'. Estimated fibre intake from bread and breakfast cereal was categorised into sex-specific quintiles (Women: Q1: mean 1.05 g/day, Q2: mean 2.47 g/day, Q3: mean 3.73 g/day Q4: mean 5.28 g/day, Q5: mean 8.42 g/day; Men: Q1: mean 1.30 g/day, Q2: mean

2.81 g/day, Q3: mean 4.31 g/day, Q4: mean 6.18 g/day, Q5: mean 9.85 g/day). Participants who did not report intake of bread and cereals or preferred not to answer were grouped as 'unknown' (2.4%).

Menopausal status:

Menopausal status was assessed using the question 'Have you had your menopause (periods stopped)?'. For participants who answered this question with 'not sure had hysterectomy', 'not sure other reason' or 'prefer not to answer' information on bilateral oophorectomy, use of HRT and age at recruitment were used to categorise participants. Participants were categorised postmenopausal if they (1) reported having their menopause ('Have you had your menopause (periods stopped)?'), (2) were over the age of 53, (3) reported a bilateral oophorectomy ('Have you had both ovaries removed?') or (4) reported Hormone replacement therapy (HRT) use. Participants were categorised 'premenopausal' if they reported: (1) not having their menopause, (2) were younger than 45 and (3) did not report a bilateral oophorectomy. Participants were regrouped to 'menopause' if they reported to not have their menopause but were over the age of 55 at recruitment and regrouped into an 'unknown' category if they reported not having had their menopause but having had a bilateral oophorectomy or having used HRT. Participants with missing information on menopausal status and who could not be reassigned using the additional information as described above were also grouped into the 'unknown' category (5.7%).

Parity:

Parity was assessed with the question 'How many children have you given birth to? (Please include live births only)' in the baseline touchscreen questionnaire. We categorised parity into 'nulliparous', 'one to two', 'three or more'. Participants, who did not answer this question or answered 'Prefer not to answer', were grouped in an 'unknown' category (0.3%).

HRT:

Use of HRT was assessed using three questions to assign the categories 'never', 'past', 'current', and 'unknown'. Never was assigned to those who replied 'no' to the question 'Have you ever used hormone replacement therapy (HRT)?' those who answered 'do not know', 'prefer not to answer' or who were missing an answer to this question were grouped 'unknown' (0.6%). Current and former intake was assessed comparing age at recruitment with answers to the questions 'How old were you when you last used HRT?' and 'How old were you when you first used HRT' that were asked after they had indicated that they had used HRT.

Oral contraceptive pill (OCP):

OCP intake was assessed using three questions to assign the categories 'never', 'past', 'current', and 'unknown'. Never was assigned to those who replied 'no' to the question 'Have you ever taken the contraceptive pill? (include the 'mini pill')', those replied 'do not know', 'prefer not to answer' or who were missing an answer were grouped 'unknown' (0.5%). Current and former intake was assessed comparing age at recruitment with answers to the questions 'How old were you when you last used the contraceptive pill?' and 'How old were you when you first went on the contraceptive pill' that were asked after they had indicated that they had used the contraceptive pill.

Skin colour:

Skin colour was assessed with the question 'What best describes your skin without tanning?'. We categorised answers into 'very fair', 'fair', 'light olive', 'dark olive', 'brown/black'. Participants, who did not answer this question, reported 'Do not know' or 'Prefer not to answer' were grouped in an 'unknown' category (1.6%).

Hair colour:

Hair colour was assessed with the question 'What best describes your natural hair colour? (If your hair colour is grey, the colour before you went grey)'. Answers were categorised into 'blonde', 'red', 'light brown', 'dark brown' and 'black'. Participants, who did not answer this question, reported 'other', 'Do not know' or 'Prefer not to answer' were grouped in an 'unknown' category (1.7%).

Skin reaction to sun exposure:

Skin reaction to sun exposure was assessed with the question 'What would happen to your skin if it was repeatedly exposed to bright sunlight without any protection'. Answers were categorised into 'get very tanned', 'get moderately tanned', 'get mildly or occasionally tanned' and 'never tan, only burn'. Participants, who did not answer this question, reported 'Do not know' or 'Prefer not to answer' were grouped in an 'unknown' category (3.7%).

Sun or UV protection use:

Use of sun or UV protection was assessed with the question 'Do you wear sun protection (e.g. sunscreen lotion, hat) when you spend time outdoors in the summer?'. Answers were categorised into 'never/rarely', 'sometime', 'most of the time', 'always' and 'do not go out in sunshine'. Participants, who did not answer this question, reported 'Do not know' or 'Prefer not to answer' were grouped in an 'unknown' category (1.2%).

Sunburns before age 15:

History of childhood sunburn was identified with the question 'Before the age of 15, how many times did you suffer sunburn that was painful for at least 2 days or caused blistering'. We dichotomised answers to never versus ever. Participants, who did not answer this question, answered 'Do not know' or 'Prefer not to answer' were grouped in an 'unknown' category (25.1%).

Solarium use:

Solarium use was assessed with the question 'How many times a year would you use a solarium or sunlamp?'. We categorised answers into 'never', '>0-2 times a year' and '≥3 times a year'. Participants, who did not answer this question, reported 'Do not know' or 'Prefer not to answer' were grouped in an 'unknown' category (2.1%).

References

1. UK Biobank Coordinating Centre. Ammendum to Main Study Protocol: Category 1 enhanced phenotyping at baseline assessment visit in last 200,000 participants and subsequent invitation to complete web-based diet questionnaire. Stockport: UK Biobank Coordinating Centre; 2009.
2. Greenwood DC, Hardie LJ, Frost GS, Alwan NA, Bradbury KE, Carter M, et al. Validation of the Oxford WebQ Online 24-hour Dietary Questionnaire Using Biomarkers. *American Journal of Epidemiology*. 2019. <https://doi.org/10.1093/aje/kwz165>. PMID: 31318012.
3. Galante J, Adamska L, Young A, Young H, Littlejohns TJ, Gallacher J, et al. The acceptability of repeat Internet-based hybrid diet assessment of previous 24-h dietary intake: administration of the Oxford WebQ in UK Biobank. *Br J Nutr*. 2015;115(4):681-6. Epub 12/11. <https://doi.org/10.1017/S0007114515004821>. PMID: 26652593.
4. Willett W. *Nutritional epidemiology*. 3rd ed. Oxford: Oxford University Press; 2013.
5. Bradbury KE, Young HJ, Guo W, Key TJ. Dietary assessment in UK Biobank: an evaluation of the performance of the touchscreen dietary questionnaire. *J Nutr Sci*. 2018;7:e6. Epub 02/01. <https://doi.org/10.1017/jns.2017.66>. PMID: 29430297.
6. Key TJ, Balkwill A, Bradbury KE, Reeves GK, Kuan AS, Simpson RF, et al. Foods, macronutrients and breast cancer risk in postmenopausal women: a large UK cohort. *Int J Epidemiol*. 2018:dyy238-dyy. <https://doi.org/10.1093/ije/dyy238>. PMID: 30412247.
7. Clarke R, Shipley M, Lewington S, Youngman L, Collins R, Marmot M, et al. Underestimation of risk associations due to regression dilution in long-term follow-up of prospective studies. *Am J Epidemiol*. 1999;150(4):341-53. Epub 1999/08/24. <https://doi.org/10.1093/oxfordjournals.aje.a010013>. PMID: 10453810.
8. University of East Anglia SoES, University of Manchester, Cathie Marsh Centre for Census and Survey Research, University of Manchester, MIMAS, Census Dissemination Unit (CDU). *Deprivation Scores Based on 1991 and 2001 Census Area Statistics*. [data collection]. 2nd Edition. SN: 5850, 2013.
9. Townsend P, Phillimore P, Beattie A. *Health and deprivation: inequality and the north*. London: Routledge; 1989.
10. Craig CL, Marshall AL, Sjöström M, Bauman AE, Booth ML, Ainsworth BE, et al. International Physical Activity Questionnaire: 12-Country reliability and validity. *Medicine and science in sports and exercise*. 2003;35(8):1381-95. <https://doi.org/10.1249/01.MSS.0000078924.61453.FB>. PMID: 12900694.
11. IPAQ. *Guidelines for Data Processing and Analysis of the International Physical activity Questionnaire (IPAQ) - Short and Long Forms 2005* [cited 2018 30/10/2018]. Available from: <https://docs.google.com/viewer?a=v&pid=sites&srcid=ZGVmYXVsdGRvbWFpbX0aGVpcGFxfGd4OjE0NDQxMDk3NDU1YWZlZTM>.
12. Armstrong MEG, Cairns BJ, Green J, Reeves GK, Beral V, The Million Women Study Collaborators. Reported frequency of physical activity in a large epidemiological study: relationship to specific activities and repeatability over time. *BMC Med Res Methodol*. 2011;11(1):97. <https://doi.org/10.1186/1471-2288-11-97>. PMID: 21831330.
13. Howley ET. Type of activity: resistance, aerobic and leisure versus occupational physical activity. *Medicine and science in sports and exercise*. 2001;33(6 Suppl):S364-9; discussion S419-20. Epub 28/06/2001. PMID: 11427761.
14. Perez-Cornago A, Key TJ, Allen NE, Fensom GK, Bradbury KE, Martin RM, et al. Prospective investigation of risk factors for prostate cancer in the UK Biobank cohort study. *Br J Cancer*. 2017;117:1562. <https://doi.org/10.1038/bjc.2017.312>. PMID: 28910820.

Supplementary Tables

S1 Table. Baseline distribution of meat intake of included UK Biobank participants

Meat intake	g/day*	All participants (n = 475,023)	Participants who developed any incident cancer (n = 28,955)
Total meat, n (%)			
<3 times/week	33.7	57,969 (12.2)	3,006 (10.4)
3-<5 times/week	84.7	119,282 (25.1)	7,517 (26.0)
5-<7 times/week	99.2	153,688 (32.4)	9,417 (32.5)
≥7 times/week	116.2	136,481 (28.7)	8,539 (29.5)
Unknown		7,603 (1.6)	476 (1.6)
Red & processed meat, n (%)			
≤1 times/week	10.5	44,027 (9.3)	2,090 (7.2)
>1-<3 times/week	48.7	160,080 (33.7)	9,460 (32.7)
3-<5 times/week	65.0	140,683 (29.6)	8,849 (30.6)
≥5 times/week	79.3	122,987 (25.9)	8,105 (28.0)
Unknown		7,246 (1.5)	451 (1.6)
Red meat, n (%)			
<1 times/week	6.5	47,725 (10.0)	2,310 (8.0)
1-<2 times/week	32.6	184,629 (38.9)	10,809 (37.3)
2-<4 times/week	45.1	173,889 (36.6)	11,338 (39.2)
≥4 times/week	55.1	62,121 (13.1)	4,088 (14.1)
Unknown		6,659 (1.4)	410 (1.4)
Processed meat, n (%)			
0 times/week	4.1	44,046 (9.3)	2,194 (7.6)
>0-<1 times/week	15.6	143,524 (30.2)	8,529 (29.5)
1-<2 times/week	21.3	138,083 (29.1)	8,708 (30.1)
≥2 times/week	29.1	147,228 (31.0)	9,406 (32.5)
Unknown		2,142 (0.5)	118 (0.4)
Poultry, n (%)			
<1 times/week	12.2	75,015 (15.8)	4,597 (15.9)
1-<2 times/week	27.4	169,479 (35.7)	11,027 (38.1)
≥2 times/week	39.4	228,554 (48.1)	13,230 (45.7)
Unknown		1,975 (0.4)	101 (0.3)

*Mean intakes are based on participants with re-measured 24-h dietary recall based on the WebQ.

S2 Table. Baseline characteristics by red and processed meat intake

Characteristics†	Red and processed meat intake (times/week), (mean g/day*)			
	≤1 (10.5)	>1-<3 (48.7)	3-<5 (65.0)	≥5 (79.3)
Sociodemographic				
Sex, n (%)				
Women	31,323 (71.1)	101,755 (63.6)	71,684 (51.0)	47,660 (38.8)
Men	12,704 (28.9)	58,325 (36.4)	68,999 (49.0)	75,327 (61.2)
Age (years)	54.9 (8.2)	56.5 (8.0)	56.4 (8.1)	56.5 (8.2)
Ethnicity, n (%)				
White	38,458 (87.4)	151,738 (94.8)	134,518 (95.6)	116,823 (95.0)
Asian or Asian British	3,468 (7.9)	2,914 (1.8)	2,245 (1.6)	1,897 (1.5)
Black or Black British	886 (2.0)	2,607 (1.6)	1,685 (1.2)	2,047 (1.7)
Mixed Race or other	998 (2.3)	2,323 (1.5)	1,807 (1.3)	1,774 (1.4)
Unknown	217 (0.5)	498 (0.3)	428 (0.3)	446 (0.4)
Townsend deprivation, n (%)				
Most affluent (mean -4.7)	7,038 (16.0)	32,848 (20.5)	29,803 (21.2)	24,668 (20.1)
2 (mean -3.3)	7,547 (17.1)	32,869 (20.5)	29,202 (20.8)	24,403 (19.8)
3 (mean -2.1)	8,355 (19.0)	32,757 (20.5)	28,326 (20.1)	24,346 (19.8)
4 (mean -0.9)	10,138 (23.0)	31,701 (19.8)	27,420 (19.5)	24,043 (19.5)
Most deprived (mean 3.8)	10,887 (24.7)	29,690 (18.5)	25,779 (18.3)	25,375 (20.6)
Unknown	62 (0.1)	215 (0.1)	153 (0.1)	152 (0.1)
Qualification, n (%)				
College or university degree/vocational qualification	28,497 (64.7)	96,080 (60.0)	82,369 (58.5)	72,442 (58.9)
National examination at ages 17-18	2,491 (5.7)	8,708 (5.4)	7,796 (5.5)	6,626 (5.4)
National examination at age 16	6,321 (14.4)	27,682 (17.3)	24,135 (17.2)	19,676 (16.0)
Other/unknown	6,718 (15.3)	27,610 (17.2)	26,383 (18.8)	24,243 (19.7)
Employment, n (%)				
In paid employment	27,657 (62.8)	93,973 (58.7)	81,649 (58.0)	70,105 (57.0)
Pension	10,229 (23.2)	48,221 (30.1)	42,698 (30.4)	37,181 (30.2)
Not in paid employment	5,557 (12.6)	16,487 (10.3)	15,237 (10.8)	14,565 (11.8)
Unknown	584 (1.3)	1,399 (0.9)	1,099 (0.8)	1,136 (0.9)
Living with a spouse/partner, n (%)				
Living with partner	27,161 (61.7)	112,484 (70.3)	107,081 (76.1)	93,472 (76.0)
Not living with partner	16,570 (37.6)	46,937 (29.3)	33,192 (23.6)	29,125 (23.7)
Unknown	296 (0.7)	659 (0.4)	410 (0.3)	390 (0.3)
Anthropometric				
Standing height (cm) in women	162.5 (6.5)	162.6 (6.3)	162.5 (6.3)	162.3 (6.3)
Standing height (cm) in men	175.3 (7.1)	175.7 (6.8)	175.8 (6.8)	175.7 (6.8)
BMI (kg/m ²), mean (SD)	25.9 (4.7)	27.1 (4.7)	27.6 (4.8)	28.1 (4.9)
Lifestyle				
Smoking, n (%)				
None	26,348 (59.8)	90,453 (56.5)	76,690 (54.5)	62,691 (51.0)
Former	13,967 (31.7)	54,802 (34.2)	48,536 (34.5)	43,272 (35.2)
Current <15 cigarettes/day	1,297 (2.9)	4,581 (2.9)	4,247 (3.0)	4,074 (3.3)
Current ≥15 cigarettes/day	1,030 (2.3)	4,825 (3.0)	6,014 (4.3)	7,623 (6.2)
Current, amount unknown	1,214 (2.8)	4,876 (3.0)	4,727 (3.4)	4,914 (4.0)
Unknown	171 (0.4)	543 (0.3)	469 (0.3)	413 (0.3)
Physical activity level, n (%)				
High ≥50 excess METs	7,773 (17.7)	24,717 (15.4)	21,860 (15.5)	20,458 (16.6)
Moderate 10-<50 excess METs	22,381 (50.8)	80,044 (50.0)	68,201 (48.5)	58,009 (47.2)
Low <10 excess METs	12,408 (28.2)	49,712 (31.1)	45,471 (32.3)	39,711 (32.3)
Unknown	1,465 (3.3)	5,607 (3.5)	5,151 (3.7)	4,809 (3.9)
Alcohol intake, n (%)				
None drinkers	7,506 (17.0)	11,941 (7.5)	9,611 (6.8)	7,793 (6.3)
<1 g/day	6,814 (15.5)	19,867 (12.4)	14,470 (10.3)	10,863 (8.8)
1-<10 g/day	14,744 (33.5)	57,217 (35.7)	43,230 (30.7)	31,589 (25.7)
10-<20 g/day	7,987 (18.1)	36,198 (22.6)	31,683 (22.5)	25,627 (20.8)
≥20 g/day	6,740 (15.3)	34,047 (21.3)	41,070 (29.2)	46,546 (37.8)
Unknown	236 (0.5)	810 (0.5)	619 (0.4)	569 (0.5)
Diet				
Fruit & vegetable intake (servings/day)	5.59 (3.19)	4.89 (2.54)	4.50 (2.45)	4.33 (2.50)
Estimated cereal fibre intake (g/day)	4.66 (3.11)	4.52 (2.89)	4.52 (2.91)	4.44 (2.96)
Women's health				

Menopausal status, n (%)				
Premenopausal	8,962 (28.6)	22,948 (22.6)	17,040 (23.8)	11,209 (23.5)
Postmenopausal	20,589 (65.7)	73,273 (72.0)	50,663 (70.7)	33,726 (70.8)
Unknown	1,772 (5.7)	5,534 (5.4)	3,981 (5.6)	2,725 (5.7)
Parity, n (%)				
0 births	8,318 (26.6)	19,784 (19.4)	11,740 (16.4)	7,299 (15.3)
1- 2 births	16,232 (51.8)	58,208 (57.2)	42,078 (58.7)	27,656 (58.0)
≥3 births	6,717 (21.4)	23,672 (23.3)	17,812 (24.8)	12,655 (26.6)
Unknown	56 (0.2)	91 (0.1)	54 (0.1)	50 (0.1)
Hormone replacement therapy use, n (%)				
Never	21,441 (68.5)	61,916 (60.8)	44,011 (61.4)	28,978 (60.8)
Past	7,951 (25.4)	33,165 (32.6)	23,018 (32.1)	15,560 (32.6)
Current	1,773 (5.7)	6,379 (6.3)	4,429 (6.2)	2,897 (6.1)
Unknown	158 (0.5)	295 (0.3)	226 (0.3)	225 (0.5)
Oral contraceptive pill use, n (%)				
Never	6,598 (21.1)	18,180 (17.9)	12,850 (17.9)	8,919 (18.7)
Past	23,877 (76.2)	81,535 (80.1)	57,270 (79.9)	37,643 (79.0)
Current	691 (2.2)	1,813 (1.8)	1,388 (1.9)	918 (1.9)
Unknown	157 (0.5)	227 (0.2)	176 (0.2)	180 (0.4)
Men's health				
Enlarged prostate, n (%)				
No/unknown	43,635 (99.1)	157,984 (98.7)	138,441 (98.4)	120,712 (98.2)
Yes	392 (0.9)	2,096 (1.3)	2,242 (1.6)	2,275 (1.8)
Skin cancer related factors				
Skin colour, n (%)				
Very fair	4,024 (9.1)	12,051 (7.5)	10,257 (7.3)	9,329 (7.6)
Fair	26,991 (61.3)	106,840 (66.7)	96,058 (68.3)	83,968 (68.3)
Light olive	8,145 (18.5)	30,901 (19.3)	25,896 (18.4)	21,300 (17.3)
Dark olive	796 (1.8)	2,836 (1.8)	2,612 (1.9)	2,418 (2.0)
Brown/black	3,450 (7.8)	5,449 (3.4)	4,014 (2.9)	4,157 (3.4)
Unknown	621 (1.4)	2,003 (1.3)	1,846 (1.3)	1,815 (1.5)
Hair colour, n (%)				
Blonde	4,223 (9.6)	17,299 (10.8)	14,933 (10.6)	12,947 (10.5)
Red	1,977 (4.5)	7,011 (4.4)	5,902 (4.2)	5,056 (4.1)
Light brown	15,605 (35.4)	62,217 (38.9)	54,767 (38.9)	47,003 (38.2)
Dark brown	16,815 (38.2)	59,983 (37.5)	52,499 (37.3)	45,152 (36.7)
Black	4,886 (11.1)	11,538 (7.2)	10,568 (7.5)	10,929 (8.9)
Other/unknown	521 (1.2)	2,032 (1.3)	2,014 (1.4)	1,900 (1.5)
Skin reaction, n (%)				
Get very tanned	8,779 (19.9)	32,382 (20.2)	29,384 (20.9)	27,429 (22.3)
Moderately tanning	15,901 (36.1)	62,216 (38.9)	54,898 (39.0)	47,573 (38.7)
Mildly/occasionally tanning	9,683 (22.0)	33,705 (21.1)	28,998 (20.6)	23,713 (19.3)
Never tanning, only burning	7,658 (17.4)	26,683 (16.7)	23,002 (16.4)	20,158 (16.4)
Unknown	2,006 (4.6)	5,094 (3.2)	4,401 (3.1)	4,114 (3.3)
UV protection use, n (%)				
Never/rarely, n (%)	5,220 (11.9)	12,695 (7.9)	13,447 (9.6)	15,808 (12.9)
Sometimes	12,597 (28.6)	49,434 (30.9)	47,891 (34.0)	44,839 (36.5)
Most of the time	14,717 (33.4)	58,318 (36.4)	50,347 (35.8)	40,856 (33.2)
Always	10,459 (23.8)	37,399 (23.4)	27,087 (19.3)	19,655 (16.0)
Do not go out in the sunshine	511 (1.2)	851 (0.5)	681 (0.5)	694 (0.6)
Unknown	523 (1.2)	1,383 (0.9)	1,230 (0.9)	1,135 (0.9)
Solarium use, n (%)				
Never	39,008 (88.6)	142,438 (89.0)	125,412 (89.1)	109,209 (88.8)
>0-2 times/year	2,258 (5.1)	8,993 (5.6)	7,951 (5.7)	7,378 (6.0)
≥3 times/year	1,619 (3.7)	6,124 (3.8)	5,017 (3.6)	4,198 (3.4)
Unknown	1,142 (2.6)	2,525 (1.6)	2,303 (1.6)	2,202 (1.8)
Childhood sunburn, n (%)				
Never	19,333 (43.9)	67,048 (41.9)	56,575 (40.2)	47,525 (38.6)
Ever	14,564 (33.1)	53,785 (33.6)	48,804 (34.7)	44,470 (36.2)
Unknown	10,130 (23.0)	39,247 (24.5)	35,304 (25.1)	30,992 (25.2)
Meat intake*				
Total meat, n (%)				
<3 times/week (mean 33.7 g/day)	33,507 (76.1)	24,462 (15.3)	0 (0.0)	0 (0.0)

3-<5 times/week (mean 84.7 g/day)	9,413 (21.4)	71,012 (44.4)	38,857 (27.6)	0 (0.0)
5-<7 times/week (mean 99.2 g/day)	905 (2.1)	61,070 (38.1)	64,865 (46.1)	26,848 (21.8)
≥7 times/week (mean 116.2 g/day)	144 (0.3)	3,426 (2.1)	36,865 (26.2)	96,046 (78.1)
Unknown, n(%)	58 (0.1)	110 (0.1)	96 (0.1)	93 (0.1)
Red meat, n (%)				
<1 times/week (mean 6.5 g/day)	39,848 (90.5)	3,414 (2.1)	3,719 (2.6)	639 (0.5)
1-<2 times/week (mean 32.6 g/day)	4,179 (9.5)	128,320 (80.2)	45,920 (32.6)	5,991 (4.9)
2-<4 times/week (mean 45.1 g/day)	0 (0.0)	28,346 (17.7)	83,920 (59.7)	61,458 (50.0)
≥4 times/week (mean 55.1 g/day)	0 (0.0)	0 (0.0)	7,124 (5.1)	54,899 (44.6)
Processed meat, n (%)				
0 times/week (mean 4.1 g/day)	31,724 (72.1)	8,781 (5.5)	2,543 (1.8)	686 (0.6)
>0- <1 times/week (mean 15.6 g/day)	10,548 (24.0)	94,759 (59.2)	28,538 (20.3)	8,397 (6.8)
1-<2 times/week (mean 21.3 g/day)	1,755 (4.0)	56,540 (35.3)	59,963 (42.6)	18,212 (14.8)
≥2 times/week (mean 29.1 g/day)	0 (0.0)	0 (0.0)	49,639 (35.3)	95,692 (77.8)
Poultry, n (%)				
<1 times/week (mean 12.2 g/day)	26,366 (59.9)	23,492 (14.7)	13,479 (9.6)	10,760 (8.7)
1-<2 times/week (mean 27.4 g/day)	7,141 (16.2)	61,116 (38.2)	56,697 (40.3)	42,295 (34.4)
≥2 times/week (mean 39.4 g/day)	10,462 (23.8)	75,362 (47.1)	70,411 (50.0)	69,839 (56.8)
Unknown	58 (0.1)	110 (0.1)	96 (0.1)	93 (0.1)

BMI, Body mass index; MET, metabolic equivalents.

*Mean intakes are based on participants with re-measured 24-h dietary recall based on the WebQ.

†Mean (Standard deviation) unless otherwise specified.

S3 Table. Baseline characteristics by poultry intake

Characteristics†	Poultry intake (times/week), (mean g/day*)		
	≤1 (12.2)	>1- <3 (27.4)	3-<5 (39.4)
Sociodemographic			
Sex, n (%)			
Women	41,883 (55.8)	88,925 (52.5)	124,256 (54.4)
Men	33,132 (44.2)	80,554 (47.5)	104,298 (45.6)
Age (years)	56.6 (8.1)	57.2 (7.9)	55.5 (8.1)
Ethnicity, n (%)			
White	69,358 (92.5)	161,955 (95.6)	214,134 (93.7)
Asian or Asian British	3,216 (4.3)	3,004 (1.8)	4,822 (2.1)
Black or Black British	903 (1.2)	1,872 (1.1)	4,937 (2.2)
Mixed Race or other	1,162 (1.5)	2,108 (1.2)	3,913 (1.7)
Unknown	376 (0.5)	540 (0.3)	748 (0.3)
Townsend deprivation, n (%)			
Most affluent (mean -4.7)	11,932 (15.9)	35,281 (20.8)	47,662 (20.9)
2 (mean -3.3)	13,076 (17.4)	34,755 (20.5)	46,802 (20.5)
3 (mean -2.1)	14,561 (19.4)	34,075 (20.1)	45,932 (20.1)
4 (mean -0.9)	16,861 (22.5)	33,073 (19.5)	44,536 (19.5)
Most deprived (mean 3.8)	18,499 (24.7)	32,125 (19.0)	43,287 (18.9)
Unknown	86 (0.1)	170 (0.1)	335 (0.1)
Qualification, n (%)			
College or university degree/vocational qualification	46,754 (62.3)	98,313 (58.0)	136,126 (59.6)
National examination at ages 17-18	3,846 (5.1)	8,752 (5.2)	13,188 (5.8)
National examination at age 16	10,302 (13.7)	27,992 (16.5)	40,291 (17.6)
Other/unknown	14,113 (18.8)	34,422 (20.3)	38,949 (17.0)
Employment, n (%)			
In paid employment	42,596 (56.8)	93,622 (55.2)	139,540 (61.1)
Pension	21,967 (29.3)	55,867 (33.0)	62,017 (27.1)
Not in paid employment	9,566 (12.8)	18,410 (10.9)	24,993 (10.9)
Unknown	886 (1.2)	1,580 (0.9)	2,004 (0.9)
Living with a spouse/partner, n (%)			
Living with partner	46,848 (62.5)	125,387 (74.0)	171,042 (74.8)
Not living with partner	27,739 (37.0)	43,436 (25.6)	56,709 (24.8)
Unknown	428 (0.6)	656 (0.4)	803 (0.4)
Anthropometric			
Standing height (cm) in women	162.6 (6.5)	162.4 (6.3)	162.4 (6.3)
Standing height (cm) in men	175.4 (7.0)	175.6 (6.9)	175.8 (6.8)
BMI (kg/m ²)	26.6 (4.8)	27.3 (4.6)	27.8 (4.9)
Lifestyle			
Smoking, n (%)			
None	39,774 (53.0)	91,572 (54.0)	127,694 (55.9)
Former	25,820 (34.4)	58,462 (34.5)	77,747 (34.0)
Current <15 cigarettes/day	2,585 (3.4)	5,268 (3.1)	6,576 (2.9)
Current ≥15 cigarettes/day	3,713 (4.9)	7,630 (4.5)	8,500 (3.7)
Current, amount unknown	2,808 (3.7)	5,880 (3.5)	7,278 (3.2)
Unknown	315 (0.4)	667 (0.4)	759 (0.3)
Physical activity level, n (%)			
High ≥ 50 excess METs	12,018 (16.0)	26,068 (15.4)	37,328 (16.3)
Moderate 10-<50 excess METs	36,618 (48.8)	82,371 (48.6)	111,398 (48.7)
Low <10 excess METs	23,401 (31.2)	54,433 (32.1)	71,420 (31.2)
Unknown	2,978 (4.0)	6,607 (3.9)	8,408 (3.7)
Alcohol intake, n (%)			
None drinkers	8,856 (11.8)	12,094 (7.1)	16,943 (7.4)
<1 g/day	10,017 (13.4)	18,203 (10.7)	24,812 (10.9)
1-<10 g/day	23,631 (31.5)	53,600 (31.6)	70,979 (31.1)
10-<20 g/day	14,675 (19.6)	37,461 (22.1)	50,047 (21.9)
≥20 g/day	17,364 (23.1)	47,270 (27.9)	64,681 (28.3)

Unknown	472 (0.6)	851 (0.5)	1,092 (0.5)
Diet			
Fruit & vegetable intake (servings/day)	4.83 (2.97)	4.50 (2.43)	4.78 (2.60)
Estimated cereal fibre intake (g/day)	4.64 (3.10)	4.51 (2.91)	4.46 (2.90)
Women's health			
Menopausal status, n (%)			
Premenopausal	10,061 (24.0)	18,217 (20.5)	32,444 (26.1)
Postmenopausal	29,715 (70.9)	66,399 (74.7)	84,033 (67.6)
Unknown	2,107 (5.0)	4,309 (4.8)	7,779 (6.3)
Parity, n (%)			
0 births	11,590 (27.7)	16,043 (18.0)	19,914 (16.0)
1-2 births	21,256 (50.8)	51,261 (57.6)	72,995 (58.7)
≥3 births	8,971 (21.4)	21,529 (24.2)	31,236 (25.1)
Unknown	66 (0.2)	92 (0.1)	111 (0.1)
Hormone replacement therapy use, n (%)			
Never	27,203 (64.9)	53,290 (59.9)	77,474 (62.4)
Past	12,072 (28.8)	29,959 (33.7)	38,493 (31.0)
Current	2,400 (5.7)	5,362 (6.0)	7,835 (6.3)
Unknown	208 (0.5)	314 (0.4)	454 (0.4)
Oral contraceptive pill use, n (%)			
Never	8,873 (21.2)	17,361 (19.5)	21,154 (17.0)
Past	32,008 (76.4)	69,798 (78.5)	100,203 (80.6)
Current	791 (1.9)	1,535 (1.7)	2,522 (2.0)
Unknown	211 (0.5)	231 (0.3)	377 (0.3)
Men's health			
Enlarged prostate, n (%)			
No/unknown	73,846 (98.4)	166,698 (98.4)	225,443 (98.6)
Yes	1,169 (1.6)	2,781 (1.6)	3,111 (1.4)
Skin cancer related factors			
Skin colour, n (%)			
Very fair	6,377 (8.5)	12,392 (7.3)	17,251 (7.5)
Fair	49,904 (66.5)	115,766 (68.3)	150,980 (66.1)
Light olive	12,671 (16.9)	30,887 (18.2)	43,342 (19.0)
Dark olive	1,257 (1.7)	3,040 (1.8)	4,486 (2.0)
Brown/black	3,474 (4.6)	4,959 (2.9)	9,567 (4.2)
Unknown	1,332 (1.8)	2,435 (1.4)	2,928 (1.3)
Hair colour, n (%)			
Blonde	7,507 (10.0)	17,959 (10.6)	24,406 (10.7)
Red	3,246 (4.3)	7,158 (4.2)	9,702 (4.2)
Light brown	28,120 (37.5)	66,247 (39.1)	86,705 (37.9)
Dark brown	28,047 (37.4)	62,722 (37.0)	85,216 (37.3)
Black	6,869 (9.2)	12,802 (7.6)	19,573 (8.6)
Other/unknown	1,226 (1.6)	2,591 (1.5)	2,952 (1.3)
Skin reaction, n (%)			
Get very tanned	15,488 (20.6)	35,425 (20.9)	48,121 (21.1)
Moderately tanning	28,135 (37.5)	66,483 (39.2)	87,512 (38.3)
Mildly/occasionally tanning	15,314 (20.4)	34,276 (20.2)	47,381 (20.7)
Never tanning, only burning	12,980 (17.3)	27,865 (16.4)	37,542 (16.4)
Unknown	3,098 (4.1)	5,430 (3.2)	7,998 (3.5)
UV protection use, n (%)			
Never/rarely	10,276 (13.7)	16,789 (9.9)	21,257 (9.3)
Sometimes	25,608 (34.1)	58,323 (34.4)	72,617 (31.8)
Most of the time	24,025 (32.0)	58,850 (34.7)	82,489 (36.1)
Always	13,649 (18.2)	33,127 (19.5)	48,700 (21.3)
Do not go out in the sunshine	740 (1.0)	934 (0.6)	1,145 (0.5)
Unknown	717 (1.0)	1,456 (0.9)	2,346 (1.0)
Solarium use, n (%)			
Never	67,682 (90.2)	151,963 (89.7)	200,645 (87.8)
>0-2 times/year	3,918 (5.2)	9,402 (5.5)	13,516 (5.9)

≥3 times/year	1,902 (2.5)	5,202 (3.1)	9,975 (4.4)
Unknown	1,513 (2.0)	2,912 (1.7)	4,418 (1.9)
Childhood sunburn, n (%)			
Never	30,661 (40.9)	69,542 (41.0)	92,589 (40.5)
Ever	25,186 (33.6)	56,949 (33.6)	80,350 (35.2)
Unknown	19,168 (25.6)	42,988 (25.4)	55,615 (24.3)
Meat and fish intake*			
Total meat, n (%)			
<3 times/week (mean 33.7 g/day)	42,706 (56.9)	15,263 (9.0)	0 (0.0)
3- <5 times/week (mean 84.7 g/day)	15,015 (20.0)	83,988 (49.6)	20,279 (8.9)
5- <7 times/week (mean 99.2 g/day)	11,134 (14.8)	47,033 (27.8)	95,521 (41.8)
≥7 times/week (mean 116.2 g/day)	5,242 (7.0)	20,965 (12.4)	110,274 (48.2)
Unknown	918 (1.2)	2,230 (1.3)	2,480 (1.1)
Red & processed meat, n (%)			
≤1 times/week (mean 10.5 g/day)	26,366 (35.1)	7,141 (4.2)	10,462 (4.6)
>1-<3 times/week (mean 48.7 g/day)	23,492 (31.3)	61,116 (36.1)	75,362 (33.0)
3-<5 times/week (mean 65.0 g/day)	13,479 (18.0)	56,697 (33.5)	70,411 (30.8)
≥5 times/week (mean 79.3 g/day)	10,760 (14.3)	42,295 (25.0)	69,839 (30.6)
Unknown	918 (1.2)	2,230 (1.3)	2,480 (1.1)
Red meat, n (%)			
<1 times/week (mean 6.5 g/day)	26,997 (36.0)	8,114 (4.8)	12,519 (5.5)
1-<2 times/week (mean 32.6 g/day)	28,816 (38.4)	67,611 (39.9)	88,055 (38.5)
2-<4 times/week (mean 45.1 g/day)	12,790 (17.0)	72,910 (43.0)	88,075 (38.5)
≥4 times/week (mean 55.1 g/day)	5,617 (7.5)	18,818 (11.1)	37,632 (16.5)
Unknown	795 (1.1)	2,026 (1.2)	2,273 (1.0)
Processed meat, n (%)			
0 times/week (mean 4.1 g/day)	24,785 (33.0)	7,763 (4.6)	11,432 (5.0)
>0-<1 times/week (mean 15.6 g/day)	21,752 (29.0)	54,282 (32.0)	67,332 (29.5)
1- <2 times/week (mean 21.3 g/day)	12,658 (16.9)	55,749 (32.9)	69,462 (30.4)
≥2 times/week (mean 29.1 g/day)	15,652 (20.9)	51,361 (30.3)	79,965 (35.0)
Unknown	168 (0.2)	324 (0.2)	363 (0.2)

BMI, Body mass index; MET, metabolic equivalents.

*Mean intakes are based on participants with re-measured 24-h dietary recall based on the WebQ.

†Mean (Standard deviation) unless otherwise specified.

S4 Table. Hazard ratios and 95% confidence intervals of cancer incidence by site according to total meat intake in UK Biobank

Site (ICD-10)	Model	Total meat intake (times/week), (mean g/day)				per 100 g higher intake	P _{trend}
		<3 (33.7)	3-<5 (84.7)	5-<7 (99.2)	≥7 (116.2)		
	Total n	57969	119282	153688	136481	467420	
Oral (C00-C14)	Cases	54	129	198	169	550	
	HR (95%-CI), Model 0	1.00 (Ref.)	1.05 (0.76, 1.44)	1.20 (0.89, 1.63)	1.07 (0.78, 1.45)	1.12 (0.78, 1.61)	0.5265
	HR (95%-CI), Model 1	1.00 (Ref.)	1.05 (0.76, 1.45)	1.21 (0.89, 1.64)	0.99 (0.72, 1.35)	1.02 (0.71, 1.46)	0.9330
	HR (95%-CI), Model 2	1.00 (Ref.)	1.08 (0.78, 1.49)	1.24 (0.91, 1.69)	1.02 (0.74, 1.41)	1.06 (0.74, 1.53)	0.7483
Oesophagus (C15)	Cases	48	125	156	196	525	
	HR (95%-CI), Model 0	1.00 (Ref.)	1.01 (0.72, 1.41)	0.95 (0.69, 1.31)	1.26 (0.91, 1.73)	1.35 (0.91, 2.00)	0.1355
	HR (95%-CI), Model 1	1.00 (Ref.)	1.01 (0.72, 1.42)	0.95 (0.68, 1.31)	1.18 (0.85, 1.64)	1.24 (0.84, 1.84)	0.2853
	HR (95%-CI), Model 2	1.00 (Ref.)	0.99 (0.70, 1.38)	0.91 (0.65, 1.27)	1.12 (0.81, 1.56)	1.16 (0.78, 1.72)	0.4659
Stomach (C16)	Cases	31	86	102	129	348	
	HR (95%-CI), Model 0	1.00 (Ref.)	1.06 (0.70, 1.61)	0.97 (0.65, 1.45)	1.31 (0.88, 1.95)	1.40 (0.86, 2.28)	0.1730
	HR (95%-CI), Model 1	1.00 (Ref.)	1.09 (0.72, 1.65)	1.00 (0.66, 1.50)	1.30 (0.87, 1.95)	1.38 (0.85, 2.24)	0.1986
	HR (95%-CI), Model 2	1.00 (Ref.)	1.07 (0.71, 1.62)	0.96 (0.64, 1.45)	1.25 (0.83, 1.87)	1.30 (0.80, 2.13)	0.2904
Colorectum (C18-20)*	Cases	283	816	1076	1019	3194	
	HR (95%-CI), Model 0	1.00 (Ref.)	1.21 (1.06, 1.39)	1.26 (1.10, 1.43)	1.35 (1.18, 1.54)	1.42 (1.22, 1.67)	<0.0001
	HR (95%-CI), Model 1	1.00 (Ref.)	1.17 (1.02, 1.35)	1.21 (1.06, 1.38)	1.27 (1.11, 1.46)	1.33 (1.14, 1.56)	0.0004
	HR (95%-CI), Model 2	1.00 (Ref.)	1.16 (1.01, 1.33)	1.18 (1.03, 1.35)	1.24 (1.08, 1.42)	1.28 (1.09, 1.51)	0.0022
Colon (C18)	Cases	188	557	706	660	2111	
	HR (95%-CI), Model 0	1.00 (Ref.)	1.25 (1.06, 1.48)	1.27 (1.08, 1.49)	1.37 (1.16, 1.61)	1.43 (1.18, 1.74)	0.0002
	HR (95%-CI), Model 1	1.00 (Ref.)	1.22 (1.03, 1.44)	1.22 (1.04, 1.44)	1.30 (1.10, 1.54)	1.35 (1.11, 1.64)	0.0023
	HR (95%-CI), Model 2	1.00 (Ref.)	1.19 (1.01, 1.41)	1.18 (1.00, 1.40)	1.25 (1.06, 1.48)	1.28 (1.05, 1.56)	0.0128
Rectum (C19-20)	Cases	98	267	378	362	1105	
	HR (95%-CI), Model 0	1.00 (Ref.)	1.12 (0.89, 1.42)	1.22 (0.98, 1.53)	1.27 (1.02, 1.60)	1.37 (1.05, 1.78)	0.0210
	HR (95%-CI), Model 1	1.00 (Ref.)	1.08 (0.86, 1.37)	1.16 (0.92, 1.46)	1.19 (0.94, 1.49)	1.25 (0.95, 1.64)	0.1073
	HR (95%-CI), Model 2	1.00 (Ref.)	1.08 (0.86, 1.37)	1.16 (0.92, 1.45)	1.18 (0.94, 1.49)	1.24 (0.95, 1.63)	0.1156
Liver (C22)	Cases	36	69	88	106	299	
	HR (95%-CI), Model 0	1.00 (Ref.)	0.78 (0.52, 1.17)	0.77 (0.52, 1.14)	1.03 (0.70, 1.51)	1.05 (0.64, 1.72)	0.8402
	HR (95%-CI), Model 1	1.00 (Ref.)	0.84 (0.55, 1.26)	0.84 (0.57, 1.26)	1.10 (0.74, 1.62)	1.14 (0.70, 1.87)	0.5992
	HR (95%-CI), Model 2	1.00 (Ref.)	0.82 (0.54, 1.24)	0.81 (0.54, 1.21)	1.03 (0.69, 1.53)	1.06 (0.64, 1.74)	0.8285
Pancreas (C25)	Cases	64	148	221	169	602	
	HR (95%-CI), Model 0	1.00 (Ref.)	0.97 (0.72, 1.30)	1.16 (0.88, 1.54)	1.04 (0.78, 1.40)	1.13 (0.80, 1.59)	0.4984
	HR (95%-CI), Model 1	1.00 (Ref.)	0.97 (0.72, 1.31)	1.17 (0.88, 1.55)	1.00 (0.74, 1.35)	1.07 (0.75, 1.51)	0.7090
	HR (95%-CI), Model 2	1.00 (Ref.)	0.95 (0.71, 1.28)	1.13 (0.85, 1.50)	0.96 (0.71, 1.29)	1.01 (0.71, 1.44)	0.9503
Lung (C34)	Cases	193	495	630	702	2020	
	HR (95%-CI), Model 0	1.00 (Ref.)	1.05 (0.89, 1.25)	1.08 (0.91, 1.27)	1.39 (1.19, 1.64)	1.53 (1.26, 1.87)	<0.0001
	HR (95%-CI), Model 1	1.00 (Ref.)	1.05 (0.89, 1.24)	1.06 (0.90, 1.25)	1.22 (1.03, 1.44)	1.28 (1.05, 1.56)	0.0134
	HR (95%-CI), Model 2	1.00 (Ref.)	1.07 (0.90, 1.26)	1.09 (0.92, 1.28)	1.25 (1.06, 1.48)	1.33 (1.09, 1.63)	0.0048
Lung (C34) in never smokers	Total n/cases	33531 / 37	66285 / 74	84646 / 75	71547 / 75	256009 / 261	
	HR (95%-CI), Model 0	1.00 (Ref.)	0.90 (0.61, 1.34)	0.79 (0.53, 1.17)	1.03 (0.69, 1.54)	0.96 (0.59, 1.57)	0.8791
	HR (95%-CI), Model 1	1.00 (Ref.)	0.92 (0.61, 1.37)	0.81 (0.54, 1.21)	1.04 (0.69, 1.56)	0.98 (0.59, 1.61)	0.9305

Malignant melanoma (C43)	HR (95%-CI), Model 2	1.00 (Ref.)	0.93 (0.62, 1.39)	0.82 (0.55, 1.24)	1.08 (0.71, 1.62)	1.02 (0.61, 1.69)	0.9445
	Cases	158	437	547	459	1601	
	HR (95%-CI), Model 0	1.00 (Ref.)	1.24 (1.03, 1.49)	1.22 (1.02, 1.46)	1.18 (0.99, 1.42)	1.20 (0.97, 1.48)	0.0871
	HR (95%-CI), Model 1	1.00 (Ref.)	1.15 (0.96, 1.38)	1.12 (0.94, 1.34)	1.11 (0.92, 1.34)	1.11 (0.90, 1.38)	0.3339
	HR (95%-CI), Model 2	1.00 (Ref.)	1.13 (0.94, 1.36)	1.10 (0.92, 1.32)	1.08 (0.90, 1.31)	1.08 (0.87, 1.34)	0.4936
Breast (C50) †	HR (95%-CI), Model 3	1.00 (Ref.)	1.12 (0.93, 1.35)	1.08 (0.90, 1.29)	1.06 (0.88, 1.28)	1.05 (0.85, 1.31)	0.6316
	Total n/cases	39583 / 791	72017 / 1644	83799 / 1886	56869 / 1280	252268 / 5601	
	HR (95%-CI), Model 0	1.00 (Ref.)	1.10 (1.01, 1.20)	1.10 (1.01, 1.20)	1.12 (1.02, 1.22)	1.14 (1.03, 1.27)	0.0113
	HR (95%-CI), Model 1	1.00 (Ref.)	1.09 (1.00, 1.19)	1.09 (1.00, 1.19)	1.11 (1.02, 1.22)	1.13 (1.02, 1.26)	0.0192
	HR (95%-CI), Model 2	1.00 (Ref.)	1.07 (0.98, 1.16)	1.05 (0.97, 1.15)	1.06 (0.97, 1.17)	1.07 (0.97, 1.20)	0.1876
Endometrium (C54) †	Total n/cases	39583 / 116	72017 / 257	83799 / 292	56869 / 190	252268 / 855	
	HR (95%-CI), Model 0	1.00 (Ref.)	1.14 (0.91, 1.42)	1.15 (0.93, 1.43)	1.15 (0.91, 1.45)	1.19 (0.91, 1.56)	0.2011
	HR (95%-CI), Model 1	1.00 (Ref.)	1.24 (0.99, 1.55)	1.29 (1.03, 1.61)	1.29 (1.02, 1.64)	1.38 (1.05, 1.82)	0.0201
	HR (95%-CI), Model 2	1.00 (Ref.)	1.14 (0.91, 1.42)	1.11 (0.89, 1.39)	1.05 (0.83, 1.33)	1.07 (0.81, 1.41)	0.6249
	Total n/cases	39583 / 99	72017 / 175	83799 / 168	56869 / 129	252268 / 571	
Ovary (C56) †	HR (95%-CI), Model 0	1.00 (Ref.)	0.90 (0.71, 1.16)	0.76 (0.59, 0.98)	0.89 (0.68, 1.15)	0.79 (0.58, 1.08)	0.1415
	HR (95%-CI), Model 1	1.00 (Ref.)	0.93 (0.72, 1.20)	0.81 (0.62, 1.04)	0.95 (0.72, 1.24)	0.86 (0.63, 1.18)	0.3477
	HR (95%-CI), Model 2	1.00 (Ref.)	0.93 (0.72, 1.19)	0.80 (0.62, 1.03)	0.94 (0.72, 1.23)	0.85 (0.62, 1.17)	0.3287
	Total n/cases	18386 / 447	47265 / 1454	69889 / 1919	79612 / 2055	215152 / 5875	
	HR (95%-CI), Model 0	1.00 (Ref.)	1.11 (0.99, 1.23)	1.05 (0.95, 1.17)	1.09 (0.98, 1.20)	1.07 (0.95, 1.20)	0.2600
Prostate (C61) ‡	HR (95%-CI), Model 1	1.00 (Ref.)	1.07 (0.96, 1.19)	1.01 (0.91, 1.12)	1.06 (0.95, 1.17)	1.04 (0.92, 1.17)	0.5089
	HR (95%-CI), Model 2	1.00 (Ref.)	1.07 (0.97, 1.20)	1.03 (0.92, 1.14)	1.08 (0.97, 1.19)	1.07 (0.95, 1.21)	0.2826
	HR (95%-CI), Model 3	1.00 (Ref.)	1.08 (0.97, 1.20)	1.02 (0.92, 1.14)	1.08 (0.97, 1.19)	1.07 (0.95, 1.20)	0.2935
	Cases	72	198	249	255	774	
	HR (95%-CI), Model 0	1.00 (Ref.)	1.12 (0.85, 1.47)	1.09 (0.84, 1.42)	1.22 (0.94, 1.59)	1.26 (0.92, 1.72)	0.1502
Kidney (C64-65)	HR (95%-CI), Model 1	1.00 (Ref.)	1.12 (0.85, 1.47)	1.10 (0.84, 1.44)	1.23 (0.94, 1.61)	1.28 (0.93, 1.76)	0.1329
	HR (95%-CI), Model 2	1.00 (Ref.)	1.06 (0.81, 1.39)	1.01 (0.78, 1.33)	1.11 (0.84, 1.45)	1.11 (0.81, 1.53)	0.5112
	Cases	55	154	202	212	623	
	HR (95%-CI), Model 0	1.00 (Ref.)	1.04 (0.76, 1.41)	1.03 (0.76, 1.39)	1.15 (0.85, 1.55)	1.19 (0.84, 1.70)	0.3323
	HR (95%-CI), Model 1	1.00 (Ref.)	0.99 (0.72, 1.35)	0.97 (0.72, 1.32)	1.04 (0.77, 1.42)	1.06 (0.74, 1.52)	0.7477
Bladder (C67)	HR (95%-CI), Model 2	1.00 (Ref.)	0.97 (0.71, 1.32)	0.95 (0.70, 1.29)	1.01 (0.74, 1.37)	1.01 (0.70, 1.45)	0.9527
	Cases	251	673	824	700	2448	
	HR (95%-CI), Model 0	1.00 (Ref.)	1.13 (0.98, 1.31)	1.10 (0.95, 1.27)	1.06 (0.92, 1.23)	1.06 (0.89, 1.25)	0.5294
	HR (95%-CI), Model 1	1.00 (Ref.)	1.14 (0.98, 1.32)	1.11 (0.96, 1.28)	1.08 (0.93, 1.25)	1.08 (0.91, 1.28)	0.4007
	HR (95%-CI), Model 2	1.00 (Ref.)	1.14 (0.98, 1.32)	1.11 (0.96, 1.28)	1.07 (0.92, 1.25)	1.07 (0.90, 1.27)	0.4481
Non-Hodgkin lymphoma (C82-85)	Cases	117	317	407	338	1179	
	HR (95%-CI), Model 0	1.00 (Ref.)	1.15 (0.93, 1.42)	1.18 (0.96, 1.45)	1.13 (0.91, 1.39)	1.15 (0.90, 1.47)	0.2607
	HR (95%-CI), Model 1	1.00 (Ref.)	1.17 (0.94, 1.45)	1.20 (0.97, 1.48)	1.15 (0.93, 1.43)	1.18 (0.92, 1.52)	0.1894
	HR (95%-CI), Model 2	1.00 (Ref.)	1.16 (0.94, 1.44)	1.19 (0.97, 1.47)	1.14 (0.92, 1.42)	1.17 (0.91, 1.51)	0.2158
	Cases	49	127	141	114	431	
Multiple myeloma (C90)	HR (95%-CI), Model 0	1.00 (Ref.)	1.10 (0.79, 1.53)	0.96 (0.70, 1.34)	0.90 (0.64, 1.27)	0.86 (0.58, 1.26)	0.4293
	HR (95%-CI), Model 1	1.00 (Ref.)	1.11 (0.80, 1.55)	0.98 (0.70, 1.36)	0.92 (0.65, 1.30)	0.87 (0.59, 1.30)	0.5000
	HR (95%-CI), Model 2	1.00 (Ref.)	1.11 (0.79, 1.55)	0.97 (0.70, 1.36)	0.91 (0.64, 1.29)	0.86 (0.58, 1.28)	0.4583
	Cases	49	127	141	114	431	

Leukaemia (C91-C95)	Cases	78	195	233	205	711	
	HR (95%-CI), Model 0	1.00 (Ref.)	1.03 (0.79, 1.34)	0.97 (0.75, 1.25)	0.94 (0.72, 1.23)	0.91 (0.67, 1.24)	0.5625
	HR (95%-CI), Model 1	1.00 (Ref.)	1.01 (0.77, 1.31)	0.95 (0.73, 1.23)	0.93 (0.71, 1.22)	0.90 (0.66, 1.23)	0.5054
	HR (95%-CI), Model 2	1.00 (Ref.)	1.00 (0.77, 1.31)	0.94 (0.73, 1.23)	0.93 (0.71, 1.22)	0.90 (0.65, 1.23)	0.5076

Bold where p < 0.05. CI, Confidence interval; HR, Hazard ratio; LR, likelihood ratio test.

Model 0: Stratified for sex, age group and region and adjusted for age (underlying time variable), ethnicity (4 groups where possible: White, Asian or Asian British, Black or Black British, Mixed race or other, unknown).

Model 1: Model 0 + deprivation (Townsend index quintiles, unknown), qualification (college or university degree/vocational qualification, national examination at ages 17-18, national examination at age 16, other/unknown), employment (in paid employment, receiving pension, not in paid employment, unknown), living with a spouse or partner (yes, no, unknown), height (sex-specific quintiles, unknown), smoking (never, former, current <15 cigarettes/day, current ≥15 cigarettes/day, current unknown amount of cigarettes/day, unknown), physical activity (<10 excess metabolic equivalents, 10-<50 excess metabolic equivalents, ≥50 excess metabolic equivalents, unknown), alcohol intake (none, <1 g/day, 1-<10 g/day, 10-<20 g/day, ≥20 g/day, unknown), total fruit and vegetable intake (< 3 servings/day, 3-< 4 servings/day, 4-< 6 servings/day, ≥ 6 servings/day, unknown), estimated cereal fibre intake (sex-specific quintiles, unknown), in women: menopausal status (pre-, postmenopausal, unknown), parity (nulliparous, 1-2, ≥3, unknown), hormone-replacement therapy use (never, past, current, unknown) and oral contraceptive pill use (never, past, current, unknown).

Model 2: Model 1 + body mass index (sex-specific quintiles, unknown).

Model 3: For malignant melanoma: Model 2 + skin colour (very fair, fair, light olive, dark olive, brown/black, unknown), hair colour (blonde, red, light brown, dark brown, black, other/unknown), skin reaction (get very tanned, moderately tanning, mildly/occasionally tanning, never tanning only burning, unknown), UV protection use (never/rarely, sometimes, most of the time, always, do not go out in the sunshine, unknown), sunburns before age 15 (never, ever, unknown), solarium use (never, >0-2 times/year, ≥3 times/year, unknown); for prostate cancer: Model 2 + enlarged prostate (yes, no, unknown).

* In 22 cases of colorectal cancer (C18/20) colon (C18) and rectal cancer (C19-20) diagnoses coincided.

† Analyses restricted to women.

‡ Analyses restricted to men.

S5 Table. Hazard ratios and 95% confidence intervals of cancer incidence by site according to red and processed meat intake in UK Biobank

Site (ICD-10)	Model	Red and processed meat intake (times/week), (mean g/day)				per 70 g higher intake	P _{trend}
		≤1 (10.5)	>1-<3 (48.7)	3-<5 (65.0)	≥5 (79.3)		
Oral (C00-C14)	Total n	44027	160080	140683	122987	467777	
	Cases	41	168	170	171	550	
	HR (95%-CI), Model 0	1.00 (Ref.)	1.02 (0.73, 1.44)	1.07 (0.76, 1.51)	1.12 (0.79, 1.58)	1.15 (0.83, 1.59)	0.4151
	HR (95%-CI), Model 1	1.00 (Ref.)	1.04 (0.74, 1.48)	1.02 (0.72, 1.45)	0.97 (0.68, 1.38)	0.94 (0.68, 1.31)	0.7202
Oesophagus (C15)	HR (95%-CI), Model 2	1.00 (Ref.)	1.07 (0.76, 1.52)	1.06 (0.74, 1.50)	1.01 (0.70, 1.44)	0.98 (0.70, 1.36)	0.8807
	Cases	32	149	158	187	526	
	HR (95%-CI), Model 0	1.00 (Ref.)	1.02 (0.70, 1.50)	1.07 (0.73, 1.56)	1.26 (0.86, 1.84)	1.35 (0.95, 1.93)	0.0939
	HR (95%-CI), Model 1	1.00 (Ref.)	1.02 (0.69, 1.51)	1.02 (0.69, 1.51)	1.13 (0.76, 1.66)	1.16 (0.81, 1.65)	0.4257
Stomach (C16)	HR (95%-CI), Model 2	1.00 (Ref.)	0.99 (0.67, 1.46)	0.97 (0.66, 1.44)	1.06 (0.72, 1.57)	1.09 (0.76, 1.56)	0.6516
	Cases	29	90	115	114	348	
	HR (95%-CI), Model 0	1.00 (Ref.)	0.67 (0.44, 1.02)	0.86 (0.57, 1.30)	0.87 (0.58, 1.32)	1.08 (0.71, 1.64)	0.7238
	HR (95%-CI), Model 1	1.00 (Ref.)	0.70 (0.46, 1.07)	0.88 (0.58, 1.33)	0.85 (0.56, 1.30)	1.02 (0.66, 1.55)	0.9393
Colorectum (C18-20)*	HR (95%-CI), Model 2	1.00 (Ref.)	0.67 (0.44, 1.03)	0.84 (0.55, 1.28)	0.81 (0.53, 1.24)	0.96 (0.63, 1.48)	0.8673
	Cases	197	1002	985	1016	3200	
	HR (95%-CI), Model 0	1.00 (Ref.)	1.21 (1.04, 1.41)	1.29 (1.10, 1.50)	1.44 (1.24, 1.68)	1.45 (1.26, 1.67)	<0.0001
	HR (95%-CI), Model 1	1.00 (Ref.)	1.18 (1.01, 1.37)	1.23 (1.05, 1.44)	1.35 (1.15, 1.58)	1.36 (1.17, 1.57)	<0.0001
Colon (C18)	HR (95%-CI), Model 2	1.00 (Ref.)	1.15 (0.99, 1.35)	1.20 (1.02, 1.40)	1.31 (1.12, 1.54)	1.31 (1.14, 1.52)	0.0002
	Cases	125	674	660	655	2114	
	HR (95%-CI), Model 0	1.00 (Ref.)	1.30 (1.07, 1.57)	1.41 (1.16, 1.71)	1.54 (1.27, 1.87)	1.53 (1.28, 1.82)	<0.0001
	HR (95%-CI), Model 1	1.00 (Ref.)	1.27 (1.05, 1.54)	1.36 (1.12, 1.65)	1.47 (1.21, 1.79)	1.45 (1.21, 1.73)	<0.0001
Rectum (C19-20)	HR (95%-CI), Model 2	1.00 (Ref.)	1.24 (1.02, 1.51)	1.31 (1.08, 1.59)	1.41 (1.15, 1.72)	1.38 (1.16, 1.66)	0.0004
	Cases	73	340	327	368	1108	
	HR (95%-CI), Model 0	1.00 (Ref.)	1.09 (0.84, 1.40)	1.08 (0.84, 1.40)	1.28 (0.99, 1.65)	1.30 (1.03, 1.65)	0.0296
	HR (95%-CI), Model 1	1.00 (Ref.)	1.03 (0.80, 1.34)	1.01 (0.78, 1.30)	1.16 (0.89, 1.50)	1.18 (0.92, 1.50)	0.1937
Liver (C22)	HR (95%-CI), Model 2	1.00 (Ref.)	1.03 (0.80, 1.33)	1.00 (0.77, 1.30)	1.15 (0.89, 1.50)	1.17 (0.92, 1.50)	0.2060
	Cases	28	86	86	99	299	
	HR (95%-CI), Model 0	1.00 (Ref.)	0.71 (0.46, 1.09)	0.74 (0.48, 1.14)	0.90 (0.59, 1.39)	1.02 (0.65, 1.58)	0.9427
	HR (95%-CI), Model 1	1.00 (Ref.)	0.79 (0.51, 1.23)	0.82 (0.52, 1.27)	0.97 (0.62, 1.51)	1.06 (0.68, 1.65)	0.8120
Pancreas (C25)	HR (95%-CI), Model 2	1.00 (Ref.)	0.77 (0.50, 1.20)	0.78 (0.50, 1.21)	0.91 (0.58, 1.42)	0.98 (0.63, 1.54)	0.9362
	Cases	41	197	191	175	604	
	HR (95%-CI), Model 0	1.00 (Ref.)	1.15 (0.82, 1.61)	1.23 (0.88, 1.73)	1.26 (0.89, 1.78)	1.27 (0.93, 1.75)	0.1370
	HR (95%-CI), Model 1	1.00 (Ref.)	1.15 (0.82, 1.62)	1.20 (0.85, 1.70)	1.17 (0.82, 1.66)	1.14 (0.83, 1.58)	0.4167
Lung (C34)	HR (95%-CI), Model 2	1.00 (Ref.)	1.12 (0.80, 1.58)	1.16 (0.82, 1.64)	1.11 (0.78, 1.59)	1.09 (0.79, 1.51)	0.6087
	Cases	108	602	608	706	2024	
	HR (95%-CI), Model 0	1.00 (Ref.)	1.32 (1.07, 1.61)	1.47 (1.20, 1.81)	1.86 (1.52, 2.28)	1.97 (1.64, 2.37)	<0.0001
	HR (95%-CI), Model 1	1.00 (Ref.)	1.29 (1.05, 1.59)	1.31 (1.06, 1.61)	1.44 (1.17, 1.77)	1.37 (1.14, 1.65)	0.0008
Lung (C34) in never smokers	HR (95%-CI), Model 2	1.00 (Ref.)	1.32 (1.08, 1.63)	1.34 (1.09, 1.66)	1.49 (1.20, 1.83)	1.41 (1.17, 1.70)	0.0002
	Total n/cases	26348 / 25	90453 / 110	76690 / 64	62691 / 62	256182 / 261	
	HR (95%-CI), Model 0	1.00 (Ref.)	1.14 (0.74, 1.77)	0.83 (0.52, 1.32)	1.00 (0.62, 1.60)	0.86 (0.55, 1.33)	0.4861
	HR (95%-CI), Model 1	1.00 (Ref.)	1.17 (0.75, 1.83)	0.84 (0.52, 1.35)	1.00 (0.62, 1.62)	0.85 (0.54, 1.34)	0.4816

Malignant melanoma (C43)	HR (95%-CI), Model 2	1.00 (Ref.)	1.18 (0.76, 1.85)	0.86 (0.53, 1.38)	1.03 (0.63, 1.68)	0.88 (0.56, 1.38)	0.5742
	Cases	98	553	550	400	1601	
	HR (95%-CI), Model 0	1.00 (Ref.)	1.43 (1.16, 1.78)	1.59 (1.28, 1.98)	1.31 (1.05, 1.64)	1.23 (1.01, 1.49)	0.0348
	HR (95%-CI), Model 1	1.00 (Ref.)	1.31 (1.05, 1.63)	1.45 (1.16, 1.80)	1.21 (0.97, 1.52)	1.16 (0.95, 1.42)	0.1363
	HR (95%-CI), Model 2	1.00 (Ref.)	1.29 (1.04, 1.60)	1.41 (1.13, 1.76)	1.18 (0.94, 1.49)	1.13 (0.93, 1.38)	0.2175
Breast (C50) †	HR (95%-CI), Model 3	1.00 (Ref.)	1.27 (1.03, 1.58)	1.40 (1.12, 1.74)	1.17 (0.93, 1.47)	1.12 (0.92, 1.37)	0.2536
	Total n/cases	31323 / 615	101755 / 2227	71684 / 1650	47660 / 1111	252422 / 5603	
	HR (95%-CI), Model 0	1.00 (Ref.)	1.08 (0.99, 1.18)	1.14 (1.03, 1.25)	1.14 (1.04, 1.26)	1.16 (1.05, 1.27)	0.0024
	HR (95%-CI), Model 1	1.00 (Ref.)	1.06 (0.97, 1.16)	1.11 (1.01, 1.22)	1.12 (1.01, 1.24)	1.13 (1.03, 1.25)	0.0120
	HR (95%-CI), Model 2	1.00 (Ref.)	1.04 (0.95, 1.13)	1.07 (0.97, 1.18)	1.07 (0.97, 1.19)	1.08 (0.98, 1.19)	0.1087
Endometrium (C54) †	Total n/cases	31323 / 87	101755 / 353	71684 / 261	47660 / 155	252422 / 856	
	HR (95%-CI), Model 0	1.00 (Ref.)	1.16 (0.92, 1.47)	1.24 (0.97, 1.58)	1.09 (0.84, 1.42)	1.12 (0.88, 1.43)	0.3480
	HR (95%-CI), Model 1	1.00 (Ref.)	1.29 (1.02, 1.64)	1.40 (1.09, 1.79)	1.24 (0.95, 1.63)	1.27 (0.99, 1.62)	0.0607
	HR (95%-CI), Model 2	1.00 (Ref.)	1.18 (0.92, 1.50)	1.19 (0.93, 1.53)	1.02 (0.78, 1.34)	1.03 (0.80, 1.32)	0.8419
	Total n/cases	31323 / 75	101755 / 246	71684 / 145	47660 / 105	252422 / 571	
Ovary (C56) †	HR (95%-CI), Model 0	1.00 (Ref.)	0.95 (0.73, 1.23)	0.79 (0.60, 1.05)	0.85 (0.63, 1.14)	0.79 (0.60, 1.05)	0.1057
	HR (95%-CI), Model 1	1.00 (Ref.)	0.98 (0.76, 1.28)	0.84 (0.63, 1.12)	0.91 (0.67, 1.23)	0.85 (0.64, 1.14)	0.2790
	HR (95%-CI), Model 2	1.00 (Ref.)	0.98 (0.75, 1.28)	0.84 (0.63, 1.11)	0.90 (0.66, 1.23)	0.85 (0.63, 1.14)	0.2663
	Total n/cases	12704 / 259	58325 / 1687	68999 / 1931	75327 / 2000	215355 / 5877	
	HR (95%-CI), Model 0	1.00 (Ref.)	1.22 (1.07, 1.39)	1.21 (1.06, 1.38)	1.16 (1.02, 1.32)	1.05 (0.94, 1.16)	0.3929
Prostate (C61) ‡	HR (95%-CI), Model 1	1.00 (Ref.)	1.17 (1.02, 1.33)	1.16 (1.02, 1.33)	1.12 (0.98, 1.28)	1.04 (0.93, 1.16)	0.4718
	HR (95%-CI), Model 2	1.00 (Ref.)	1.18 (1.03, 1.34)	1.18 (1.03, 1.35)	1.15 (1.01, 1.31)	1.07 (0.96, 1.19)	0.2488
	HR (95%-CI), Model 3	1.00 (Ref.)	1.18 (1.03, 1.34)	1.18 (1.03, 1.35)	1.15 (1.01, 1.31)	1.07 (0.96, 1.19)	0.2375
	Cases	50	243	238	245	776	
	HR (95%-CI), Model 0	1.00 (Ref.)	1.12 (0.83, 1.52)	1.15 (0.84, 1.56)	1.24 (0.91, 1.68)	1.24 (0.93, 1.64)	0.1424
Kidney (C64-65)	HR (95%-CI), Model 1	1.00 (Ref.)	1.11 (0.82, 1.52)	1.14 (0.83, 1.55)	1.23 (0.90, 1.69)	1.23 (0.92, 1.64)	0.1616
	HR (95%-CI), Model 2	1.00 (Ref.)	1.04 (0.76, 1.42)	1.03 (0.76, 1.42)	1.09 (0.79, 1.50)	1.09 (0.81, 1.46)	0.5636
	Cases	31	190	197	205	623	
	HR (95%-CI), Model 0	1.00 (Ref.)	1.27 (0.87, 1.86)	1.28 (0.88, 1.88)	1.33 (0.91, 1.95)	1.25 (0.90, 1.73)	0.1796
	HR (95%-CI), Model 1	1.00 (Ref.)	1.19 (0.81, 1.74)	1.15 (0.78, 1.70)	1.14 (0.77, 1.68)	1.05 (0.75, 1.46)	0.7756
Bladder (C67)	HR (95%-CI), Model 2	1.00 (Ref.)	1.16 (0.79, 1.70)	1.11 (0.76, 1.64)	1.09 (0.74, 1.61)	1.00 (0.72, 1.40)	0.9814
	Cases	191	837	754	669	2451	
	HR (95%-CI), Model 0	1.00 (Ref.)	1.05 (0.90, 1.23)	1.03 (0.87, 1.20)	0.99 (0.84, 1.17)	0.97 (0.83, 1.13)	0.7011
	HR (95%-CI), Model 1	1.00 (Ref.)	1.05 (0.89, 1.23)	1.03 (0.87, 1.21)	1.00 (0.85, 1.18)	0.98 (0.84, 1.14)	0.7841
	HR (95%-CI), Model 2	1.00 (Ref.)	1.04 (0.89, 1.22)	1.02 (0.87, 1.21)	0.99 (0.84, 1.17)	0.97 (0.83, 1.14)	0.7151
Lymphatic and hematopoietic tissues (C81-96)	Cases	95	388	361	337	1181	
	HR (95%-CI), Model 0	1.00 (Ref.)	0.99 (0.79, 1.23)	1.01 (0.80, 1.27)	1.04 (0.83, 1.31)	1.06 (0.85, 1.32)	0.5906
	HR (95%-CI), Model 1	1.00 (Ref.)	1.00 (0.79, 1.25)	1.02 (0.81, 1.29)	1.06 (0.83, 1.34)	1.07 (0.86, 1.35)	0.5333
	HR (95%-CI), Model 2	1.00 (Ref.)	0.99 (0.79, 1.25)	1.01 (0.80, 1.28)	1.05 (0.82, 1.33)	1.06 (0.85, 1.34)	0.5874
	Cases	31	161	134	106	432	
Non-Hodgkin lymphoma (C82-85)	HR (95%-CI), Model 0	1.00 (Ref.)	1.26 (0.85, 1.85)	1.14 (0.77, 1.69)	1.00 (0.66, 1.50)	0.90 (0.63, 1.28)	0.5452
	HR (95%-CI), Model 1	1.00 (Ref.)	1.27 (0.86, 1.88)	1.17 (0.79, 1.75)	1.03 (0.68, 1.56)	0.93 (0.64, 1.34)	0.6861
	HR (95%-CI), Model 2	1.00 (Ref.)	1.27 (0.86, 1.87)	1.16 (0.78, 1.74)	1.02 (0.67, 1.54)	0.92 (0.63, 1.32)	0.6355
	Cases	31	161	134	106	432	
	HR (95%-CI), Model 0	1.00 (Ref.)	1.26 (0.85, 1.85)	1.14 (0.77, 1.69)	1.00 (0.66, 1.50)	0.90 (0.63, 1.28)	0.5452
Multiple myeloma (C90)	HR (95%-CI), Model 1	1.00 (Ref.)	1.27 (0.86, 1.88)	1.17 (0.79, 1.75)	1.03 (0.68, 1.56)	0.93 (0.64, 1.34)	0.6861
	HR (95%-CI), Model 2	1.00 (Ref.)	1.27 (0.86, 1.87)	1.16 (0.78, 1.74)	1.02 (0.67, 1.54)	0.92 (0.63, 1.32)	0.6355

Leukaemia (C91-C95)	Cases	57	245	219	190	711	
	HR (95%-CI), Model 0	1.00 (Ref.)	0.99 (0.74, 1.33)	0.94 (0.70, 1.26)	0.87 (0.64, 1.17)	0.84 (0.64, 1.11)	0.2181
	HR (95%-CI), Model 1	1.00 (Ref.)	0.95 (0.71, 1.27)	0.90 (0.66, 1.21)	0.83 (0.61, 1.13)	0.81 (0.61, 1.08)	0.1459
	HR (95%-CI), Model 2	1.00 (Ref.)	0.95 (0.71, 1.27)	0.89 (0.66, 1.21)	0.83 (0.61, 1.13)	0.81 (0.60, 1.08)	0.1460

Bold where p < 0.05. CI, Confidence interval; HR, Hazard ratio; LR, likelihood ratio test.

Model 0: Stratified for sex, age group and region and adjusted for age (underlying time variable), ethnicity (4 groups where possible: White, Asian or Asian British, Black or Black British, Mixed race or other, unknown).

Model 1: Model 0 + deprivation (Townsend index quintiles, unknown), qualification (college or university degree/vocational qualification, national examination at ages 17-18, national examination at age 16, other/unknown), employment (in paid employment, receiving pension, not in paid employment, unknown), living with a spouse or partner (yes, no, unknown), height (sex-specific quintiles, unknown), smoking (never, former, current <15 cigarettes/day, current ≥15 cigarettes/day, current unknown amount of cigarettes/day, unknown), physical activity (<10 excess metabolic equivalents, 10-<50 excess metabolic equivalents, ≥50 excess metabolic equivalents, unknown), alcohol intake (none, <1 g/day, 1-<10 g/day, 10-<20 g/day, ≥20 g/day, unknown), total fruit and vegetable intake (< 3 servings/day, 3-< 4 servings/day, 4-< 6 servings/day, ≥ 6 servings/day, unknown), estimated cereal fibre intake (sex-specific quintiles, unknown), in women: menopausal status (pre-, postmenopausal, unknown), parity (nulliparous, 1-2, ≥3, unknown), hormone-replacement therapy use (never, past, current, unknown) and oral contraceptive pill use (never, past, current, unknown).

Model 2: Model 1 + body mass index (sex-specific quintiles, unknown).

Model 3: For malignant melanoma: Model 2 + skin colour (very fair, fair, light olive, dark olive, brown/black, unknown), hair colour (blonde, red, light brown, dark brown, black, other/unknown), skin reaction (get very tanned, moderately tanning, mildly/occasionally tanning, never tanning only burning, unknown), UV protection use (never/rarely, sometimes, most of the time, always, do not go out in the sunshine, unknown), sunburns before age 15 (never, ever, unknown), solarium use (never, >0-2 times/year, ≥3 times/year, unknown); for prostate cancer: Model 2 + enlarged prostate (yes, no, unknown).

* In 22 cases of colorectal cancer (C18/20) colon (C18) and rectal cancer (C19-20) diagnoses coincided.

† Analyses restricted to women.

‡ Analyses restricted to men.

S6 Table. Hazard ratios and 95% confidence intervals of cancer incidence by site according to red meat intake in UK Biobank

Site (ICD-10)	Model	Red meat intake (times/week), (mean g/day)				per 50 g higher intake	P _{trend}
		<1 (6.5)	1-<2 (32.6)	2-<3 (45.1)	≥3 (55.1)		
Oral (C00-C14)	Total n	47725	184629	173889	62121	468364	
	Cases	53	195	218	84	550	
	HR (95%-CI), Model 0	1.00 (Ref.)	0.85 (0.62, 1.15)	0.95 (0.70, 1.28)	0.97 (0.69, 1.38)	1.05 (0.75, 1.46)	0.7928
	HR (95%-CI), Model 1	1.00 (Ref.)	0.85 (0.63, 1.16)	0.93 (0.68, 1.26)	0.87 (0.61, 1.24)	0.94 (0.67, 1.32)	0.7216
	HR (95%-CI), Model 2	1.00 (Ref.)	0.88 (0.64, 1.19)	0.96 (0.70, 1.30)	0.90 (0.63, 1.29)	0.97 (0.69, 1.36)	0.8714
Oesophagus (C15)	Cases	37	189	221	80	527	
	HR (95%-CI), Model 0	1.00 (Ref.)	1.03 (0.73, 1.47)	1.13 (0.80, 1.61)	1.07 (0.73, 1.59)	1.14 (0.80, 1.64)	0.4606
	HR (95%-CI), Model 1	1.00 (Ref.)	1.04 (0.73, 1.49)	1.13 (0.79, 1.61)	1.00 (0.67, 1.49)	1.06 (0.74, 1.52)	0.7473
	HR (95%-CI), Model 2	1.00 (Ref.)	1.01 (0.71, 1.44)	1.08 (0.75, 1.54)	0.94 (0.63, 1.41)	1.00 (0.70, 1.44)	0.9913
Stomach (C16)	Cases	28	117	147	58	350	
	HR (95%-CI), Model 0	1.00 (Ref.)	0.85 (0.56, 1.28)	1.01 (0.67, 1.52)	1.05 (0.66, 1.65)	1.20 (0.77, 1.87)	0.4244
	HR (95%-CI), Model 1	1.00 (Ref.)	0.89 (0.59, 1.36)	1.06 (0.70, 1.61)	1.05 (0.66, 1.67)	1.20 (0.77, 1.87)	0.4279
	HR (95%-CI), Model 2	1.00 (Ref.)	0.87 (0.57, 1.32)	1.02 (0.68, 1.55)	1.01 (0.63, 1.60)	1.14 (0.73, 1.79)	0.5601
Colorectum (C18-20)*	Cases	228	1184	1282	507	3201	
	HR (95%-CI), Model 0	1.00 (Ref.)	1.16 (1.01, 1.34)	1.24 (1.07, 1.43)	1.34 (1.15, 1.57)	1.35 (1.16, 1.56)	0.0001
	HR (95%-CI), Model 1	1.00 (Ref.)	1.12 (0.97, 1.29)	1.17 (1.02, 1.36)	1.26 (1.07, 1.48)	1.26 (1.08, 1.46)	0.0026
	HR (95%-CI), Model 2	1.00 (Ref.)	1.10 (0.95, 1.27)	1.15 (0.99, 1.33)	1.22 (1.04, 1.44)	1.22 (1.05, 1.42)	0.0091
Colon (C18)	Cases	142	780	853	339	2114	
	HR (95%-CI), Model 0	1.00 (Ref.)	1.25 (1.04, 1.49)	1.35 (1.13, 1.62)	1.48 (1.21, 1.80)	1.47 (1.23, 1.76)	<0.0001
	HR (95%-CI), Model 1	1.00 (Ref.)	1.22 (1.02, 1.46)	1.30 (1.09, 1.56)	1.41 (1.15, 1.72)	1.39 (1.16, 1.67)	0.0004
	HR (95%-CI), Model 2	1.00 (Ref.)	1.19 (0.99, 1.43)	1.26 (1.05, 1.51)	1.35 (1.10, 1.65)	1.34 (1.11, 1.61)	0.0021
Rectum (C19-20)	Cases	87	417	435	170	1109	
	HR (95%-CI), Model 0	1.00 (Ref.)	1.03 (0.82, 1.30)	1.05 (0.83, 1.33)	1.13 (0.87, 1.47)	1.12 (0.88, 1.43)	0.3559
	HR (95%-CI), Model 1	1.00 (Ref.)	0.98 (0.77, 1.23)	0.97 (0.77, 1.23)	1.02 (0.78, 1.33)	1.01 (0.79, 1.30)	0.9091
	HR (95%-CI), Model 2	1.00 (Ref.)	0.97 (0.77, 1.23)	0.97 (0.76, 1.23)	1.02 (0.78, 1.33)	1.01 (0.79, 1.30)	0.9380
Liver (C22)	Cases	25	106	122	48	301	
	HR (95%-CI), Model 0	1.00 (Ref.)	0.92 (0.59, 1.43)	1.03 (0.67, 1.58)	1.10 (0.68, 1.79)	1.18 (0.74, 1.88)	0.4985
	HR (95%-CI), Model 1	1.00 (Ref.)	1.05 (0.67, 1.63)	1.19 (0.76, 1.86)	1.21 (0.74, 1.99)	1.30 (0.81, 2.07)	0.2782
	HR (95%-CI), Model 2	1.00 (Ref.)	1.02 (0.66, 1.60)	1.15 (0.73, 1.80)	1.15 (0.70, 1.90)	1.23 (0.77, 1.97)	0.3945
Pancreas (C25)	Cases	46	224	258	76	604	
	HR (95%-CI), Model 0	1.00 (Ref.)	1.09 (0.79, 1.50)	1.25 (0.91, 1.72)	1.05 (0.72, 1.51)	1.18 (0.85, 1.64)	0.3281
	HR (95%-CI), Model 1	1.00 (Ref.)	1.09 (0.79, 1.51)	1.23 (0.89, 1.70)	0.98 (0.67, 1.43)	1.10 (0.79, 1.54)	0.5605
	HR (95%-CI), Model 2	1.00 (Ref.)	1.07 (0.77, 1.47)	1.19 (0.86, 1.65)	0.94 (0.65, 1.37)	1.06 (0.76, 1.48)	0.7446
Lung (C34)	Cases	137	720	795	375	2027	

	HR (95%-CI), Model 0	1.00 (Ref.)	1.18 (0.98, 1.41)	1.27 (1.05, 1.52)	1.59 (1.30, 1.93)	1.57 (1.31, 1.90)	<0.0001
	HR (95%-CI), Model 1	1.00 (Ref.)	1.14 (0.95, 1.38)	1.17 (0.97, 1.41)	1.30 (1.06, 1.59)	1.27 (1.05, 1.53)	0.0124
	HR (95%-CI), Model 2	1.00 (Ref.)	1.17 (0.97, 1.40)	1.20 (1.00, 1.44)	1.34 (1.09, 1.63)	1.30 (1.08, 1.57)	0.0055
Lung (C34) in never smokers	Total n/cases	28308 / 27	102391 / 112	93745 / 82	32101 / 41	256545 / 262	
	HR (95%-CI), Model 0	1.00 (Ref.)	1.06 (0.70, 1.62)	0.81 (0.52, 1.25)	1.15 (0.71, 1.88)	0.91 (0.57, 1.45)	0.6970
	HR (95%-CI), Model 1	1.00 (Ref.)	1.07 (0.70, 1.64)	0.82 (0.52, 1.28)	1.15 (0.70, 1.90)	0.92 (0.57, 1.48)	0.7302
	HR (95%-CI), Model 2	1.00 (Ref.)	1.08 (0.70, 1.66)	0.83 (0.53, 1.31)	1.18 (0.71, 1.95)	0.95 (0.58, 1.53)	0.8181
Malignant melanoma (C43)	Cases	107	657	655	185	1604	
	HR (95%-CI), Model 0	1.00 (Ref.)	1.47 (1.20, 1.80)	1.50 (1.22, 1.84)	1.19 (0.94, 1.52)	1.21 (0.99, 1.47)	0.0649
	HR (95%-CI), Model 1	1.00 (Ref.)	1.36 (1.10, 1.67)	1.36 (1.11, 1.68)	1.13 (0.88, 1.44)	1.13 (0.92, 1.38)	0.2563
	HR (95%-CI), Model 2	1.00 (Ref.)	1.34 (1.09, 1.64)	1.33 (1.08, 1.64)	1.10 (0.86, 1.40)	1.10 (0.89, 1.35)	0.3683
	HR (95%-CI), Model 3	1.00 (Ref.)	1.32 (1.07, 1.62)	1.31 (1.07, 1.62)	1.09 (0.85, 1.39)	1.09 (0.88, 1.34)	0.4366
Breast (C50) †	Total n/cases	31964 / 632	103136 / 2207	88315 / 2063	29330 / 710	252745 / 5612	
	HR (95%-CI), Model 0	1.00 (Ref.)	1.05 (0.96, 1.15)	1.13 (1.03, 1.23)	1.16 (1.04, 1.30)	1.19 (1.07, 1.31)	0.0008
	HR (95%-CI), Model 1	1.00 (Ref.)	1.04 (0.95, 1.13)	1.10 (1.01, 1.21)	1.15 (1.03, 1.28)	1.17 (1.05, 1.29)	0.0033
	HR (95%-CI), Model 2	1.00 (Ref.)	1.01 (0.93, 1.11)	1.07 (0.98, 1.17)	1.11 (0.99, 1.23)	1.12 (1.01, 1.24)	0.0299
Endometrium (C54) †	Total n/cases	31964 / 89	103136 / 347	88315 / 327	29330 / 93	252745 / 856	
	HR (95%-CI), Model 0	1.00 (Ref.)	1.13 (0.90, 1.43)	1.20 (0.95, 1.52)	1.02 (0.76, 1.37)	1.11 (0.86, 1.44)	0.4074
	HR (95%-CI), Model 1	1.00 (Ref.)	1.24 (0.98, 1.58)	1.37 (1.08, 1.75)	1.17 (0.87, 1.57)	1.29 (1.00, 1.68)	0.0545
	HR (95%-CI), Model 2	1.00 (Ref.)	1.13 (0.89, 1.44)	1.19 (0.93, 1.52)	0.99 (0.73, 1.33)	1.08 (0.83, 1.40)	0.5739
Ovary (C56) †	Total n/cases	31964 / 84	103136 / 234	88315 / 182	29330 / 73	252745 / 573	
	HR (95%-CI), Model 0	1.00 (Ref.)	0.81 (0.63, 1.04)	0.71 (0.55, 0.92)	0.85 (0.62, 1.16)	0.74 (0.55, 0.99)	0.0461
	HR (95%-CI), Model 1	1.00 (Ref.)	0.83 (0.65, 1.07)	0.75 (0.57, 0.98)	0.90 (0.65, 1.24)	0.80 (0.59, 1.08)	0.1441
	HR (95%-CI), Model 2	1.00 (Ref.)	0.83 (0.64, 1.07)	0.75 (0.57, 0.97)	0.90 (0.65, 1.24)	0.79 (0.58, 1.08)	0.1346
Prostate (C61) ‡	Cases	15761 / 294	81493 / 2213	85574 / 2495	32791 / 884	215619 / 5886	
	HR (95%-CI), Model 0	1.00 (Ref.)	1.29 (1.14, 1.46)	1.31 (1.16, 1.48)	1.23 (1.08, 1.40)	1.16 (1.04, 1.30)	0.0087
	HR (95%-CI), Model 1	1.00 (Ref.)	1.23 (1.09, 1.39)	1.25 (1.11, 1.42)	1.18 (1.03, 1.35)	1.13 (1.01, 1.26)	0.0396
	HR (95%-CI), Model 2	1.00 (Ref.)	1.25 (1.10, 1.41)	1.27 (1.13, 1.44)	1.21 (1.05, 1.38)	1.15 (1.03, 1.29)	0.0151
	HR (95%-CI), Model 3	1.00 (Ref.)	1.25 (1.10, 1.41)	1.28 (1.13, 1.44)	1.21 (1.06, 1.38)	1.16 (1.03, 1.30)	0.0134
Kidney (C64-65)	Cases	60	283	315	118	776	
	HR (95%-CI), Model 0	1.00 (Ref.)	1.02 (0.77, 1.35)	1.10 (0.83, 1.45)	1.12 (0.82, 1.53)	1.17 (0.87, 1.56)	0.3004
	HR (95%-CI), Model 1	1.00 (Ref.)	1.02 (0.77, 1.35)	1.12 (0.84, 1.48)	1.13 (0.82, 1.55)	1.19 (0.89, 1.61)	0.2449
	HR (95%-CI), Model 2	1.00 (Ref.)	0.95 (0.72, 1.27)	1.03 (0.77, 1.36)	1.01 (0.74, 1.40)	1.07 (0.79, 1.45)	0.6513
Bladder (C67)	Cases	37	238	252	99	626	
	HR (95%-CI), Model 0	1.00 (Ref.)	1.23 (0.87, 1.74)	1.22 (0.86, 1.73)	1.31 (0.90, 1.92)	1.23 (0.88, 1.72)	0.2302
	HR (95%-CI), Model 1	1.00 (Ref.)	1.16 (0.82, 1.65)	1.13 (0.80, 1.61)	1.17 (0.79, 1.72)	1.10 (0.78, 1.55)	0.5776
	HR (95%-CI), Model 2	1.00 (Ref.)	1.13 (0.80, 1.61)	1.10 (0.77, 1.56)	1.12 (0.76, 1.65)	1.06 (0.75, 1.49)	0.7464
Lymphatic and hematopoietic	Cases	215	922	989	327	2453	

tissues (C81-96)	HR (95%-CI), Model 0	1.00 (Ref.)	0.97 (0.83, 1.12)	1.03 (0.89, 1.19)	0.95 (0.80, 1.13)	1.01 (0.86, 1.19)	0.8993
	HR (95%-CI), Model 1	1.00 (Ref.)	0.97 (0.83, 1.12)	1.04 (0.90, 1.21)	0.96 (0.81, 1.15)	1.03 (0.87, 1.21)	0.7272
	HR (95%-CI), Model 2	1.00 (Ref.)	0.96 (0.83, 1.12)	1.04 (0.89, 1.21)	0.95 (0.80, 1.14)	1.02 (0.87, 1.20)	0.7888
Non-Hodgkin lymphoma (C82-85)	Cases	99	435	483	165	1182	
	HR (95%-CI), Model 0	1.00 (Ref.)	1.00 (0.80, 1.24)	1.11 (0.89, 1.38)	1.06 (0.83, 1.37)	1.14 (0.91, 1.44)	0.2594
	HR (95%-CI), Model 1	1.00 (Ref.)	1.01 (0.81, 1.27)	1.13 (0.91, 1.41)	1.09 (0.84, 1.41)	1.17 (0.92, 1.49)	0.1914
	HR (95%-CI), Model 2	1.00 (Ref.)	1.01 (0.81, 1.26)	1.13 (0.90, 1.41)	1.08 (0.84, 1.40)	1.16 (0.92, 1.48)	0.2158
Multiple myeloma (C90)	Cases	35	185	163	49	432	
	HR (95%-CI), Model 0	1.00 (Ref.)	1.20 (0.84, 1.73)	1.06 (0.73, 1.53)	0.90 (0.58, 1.40)	0.87 (0.60, 1.26)	0.4495
	HR (95%-CI), Model 1	1.00 (Ref.)	1.21 (0.84, 1.74)	1.08 (0.74, 1.57)	0.91 (0.58, 1.41)	0.88 (0.60, 1.28)	0.5031
	HR (95%-CI), Model 2	1.00 (Ref.)	1.20 (0.83, 1.74)	1.07 (0.74, 1.56)	0.90 (0.57, 1.40)	0.87 (0.59, 1.27)	0.4678
Leukaemia (C91-C95)	Cases	71	256	291	94	712	
	HR (95%-CI), Model 0	1.00 (Ref.)	0.78 (0.60, 1.02)	0.87 (0.67, 1.13)	0.77 (0.56, 1.05)	0.86 (0.64, 1.15)	0.3141
	HR (95%-CI), Model 1	1.00 (Ref.)	0.76 (0.58, 0.99)	0.85 (0.65, 1.11)	0.76 (0.55, 1.04)	0.85 (0.63, 1.15)	0.3052
	HR (95%-CI), Model 2	1.00 (Ref.)	0.75 (0.58, 0.98)	0.85 (0.65, 1.11)	0.76 (0.55, 1.04)	0.85 (0.63, 1.15)	0.3019

Bold where $p < 0.05$. CI, Confidence interval; HR, Hazard ratio; LR, likelihood ratio test.

Model 0: Stratified for sex, age group and region and adjusted for age (underlying time variable), ethnicity (4 groups where possible: White, Asian or Asian British, Black or Black British, Mixed race or other, unknown).

Model 1: Model 0 + deprivation (Townsend index quintiles, unknown), qualification (college or university degree/vocational qualification, national examination at ages 17-18, national examination at age 16, other/unknown), employment (in paid employment, receiving pension, not in paid employment, unknown), living with a spouse or partner (yes, no, unknown), height (sex-specific quintiles, unknown), smoking (never, former, current < 15 cigarettes/day, current ≥ 15 cigarettes/day, current unknown amount of cigarettes/day, unknown), physical activity (< 10 excess metabolic equivalents, $10 < 50$ excess metabolic equivalents, ≥ 50 excess metabolic equivalents, unknown), alcohol intake (none, < 1 g/day, $1 < 10$ g/day, $10 < 20$ g/day, ≥ 20 g/day, unknown), total fruit and vegetable intake (< 3 servings/day, $3 < 4$ servings/day, $4 < 6$ servings/day, ≥ 6 servings/day, unknown), estimated cereal fibre intake (sex-specific quintiles, unknown), in women: menopausal status (pre-, postmenopausal, unknown), parity (nulliparous, 1-2, ≥ 3 , unknown), hormone-replacement therapy use (never, past, current, unknown) and oral contraceptive pill use (never, past, current, unknown).

Model 2: Model 1 + body mass index (sex-specific quintiles, unknown).

Model 3: For malignant melanoma: Model 2 + skin colour (very fair, fair, light olive, dark olive, brown/black, unknown), hair colour (blonde, red, light brown, dark brown, black, other/unknown), skin reaction (get very tanned, moderately tanning, mildly/occasionally tanning, never tanning only burning, unknown), UV protection use (never/rarely, sometimes, most of the time, always, do not go out in the sunshine, unknown), sunburns before age 15 (never, ever, unknown), solarium use (never, $> 0-2$ times/year, ≥ 3 times/year, unknown); for prostate cancer: Model 2 + enlarged prostate (yes, no, unknown).

* In 22 cases of colorectal cancer (C18/20) colon (C18) and rectal cancer (C19-20) diagnoses coincided.

† Analyses restricted to women.

‡ Analyses restricted to men.

S7 Table. Hazard ratios and 95% confidence intervals of cancer incidence by site according to processed meat intake in UK Biobank

Site (ICD-10)	Model	Processed meat intake (times/week), (mean g/day)				per 20 g higher intake	P _{trend}
		0 (4.1)	>0-<1 (15.6)	1-<2 (21.3)	≥2 (29.1)		
Oral (C00-C14)	Total n	44046	143524	138083	147228	472881	
	Cases	48	128	177	205	558	
	HR (95%-CI), Model 0	1.00 (Ref.)	0.76 (0.55, 1.06)	0.98 (0.71, 1.36)	0.96 (0.70, 1.33)	1.11 (0.87, 1.41)	0.4054
	HR (95%-CI), Model 1	1.00 (Ref.)	0.77 (0.55, 1.08)	0.96 (0.69, 1.33)	0.83 (0.59, 1.15)	0.93 (0.73, 1.19)	0.5650
	HR (95%-CI), Model 2	1.00 (Ref.)	0.79 (0.57, 1.11)	0.99 (0.71, 1.38)	0.86 (0.61, 1.19)	0.95 (0.75, 1.21)	0.6892
Oesophagus (C15)	Cases	35	128	152	219	534	
	HR (95%-CI), Model 0	1.00 (Ref.)	0.95 (0.65, 1.37)	0.99 (0.68, 1.43)	1.18 (0.82, 1.70)	1.25 (0.97, 1.61)	0.0791
	HR (95%-CI), Model 1	1.00 (Ref.)	0.93 (0.64, 1.36)	0.93 (0.64, 1.36)	1.02 (0.70, 1.48)	1.08 (0.83, 1.39)	0.5729
	HR (95%-CI), Model 2	1.00 (Ref.)	0.90 (0.62, 1.32)	0.89 (0.61, 1.30)	0.97 (0.66, 1.40)	1.03 (0.80, 1.34)	0.7947
Stomach (C16)	Cases	28	86	105	134	353	
	HR (95%-CI), Model 0	1.00 (Ref.)	0.78 (0.51, 1.20)	0.86 (0.56, 1.31)	0.94 (0.62, 1.42)	1.08 (0.79, 1.46)	0.6376
	HR (95%-CI), Model 1	1.00 (Ref.)	0.81 (0.53, 1.25)	0.86 (0.56, 1.33)	0.89 (0.58, 1.37)	1.00 (0.73, 1.36)	0.9995
	HR (95%-CI), Model 2	1.00 (Ref.)	0.79 (0.51, 1.22)	0.83 (0.54, 1.28)	0.86 (0.56, 1.31)	0.97 (0.71, 1.32)	0.8474
Colorectum (C18-20)*	Cases	211	905	963	1149	3228	
	HR (95%-CI), Model 0	1.00 (Ref.)	1.19 (1.02, 1.38)	1.25 (1.07, 1.45)	1.36 (1.17, 1.58)	1.25 (1.13, 1.39)	<0.0001
	HR (95%-CI), Model 1	1.00 (Ref.)	1.15 (0.99, 1.34)	1.20 (1.03, 1.40)	1.28 (1.10, 1.50)	1.20 (1.08, 1.33)	0.0006
	HR (95%-CI), Model 2	1.00 (Ref.)	1.13 (0.97, 1.32)	1.17 (1.00, 1.36)	1.25 (1.07, 1.46)	1.18 (1.06, 1.31)	0.0022
Colon (C18)	Cases	145	621	649	719	2134	
	HR (95%-CI), Model 0	1.00 (Ref.)	1.20 (1.00, 1.43)	1.27 (1.06, 1.52)	1.32 (1.10, 1.58)	1.21 (1.07, 1.37)	0.0025
	HR (95%-CI), Model 1	1.00 (Ref.)	1.17 (0.97, 1.40)	1.22 (1.02, 1.47)	1.26 (1.05, 1.52)	1.17 (1.03, 1.32)	0.0167
	HR (95%-CI), Model 2	1.00 (Ref.)	1.14 (0.95, 1.37)	1.18 (0.98, 1.42)	1.21 (1.00, 1.46)	1.13 (1.00, 1.29)	0.0575
Rectum (C19-20)	Cases	68	289	322	437	1116	
	HR (95%-CI), Model 0	1.00 (Ref.)	1.16 (0.89, 1.51)	1.21 (0.93, 1.57)	1.42 (1.10, 1.85)	1.34 (1.13, 1.60)	0.0009
	HR (95%-CI), Model 1	1.00 (Ref.)	1.11 (0.85, 1.45)	1.14 (0.87, 1.49)	1.31 (1.00, 1.71)	1.26 (1.06, 1.51)	0.0104
	HR (95%-CI), Model 2	1.00 (Ref.)	1.11 (0.85, 1.45)	1.14 (0.87, 1.49)	1.31 (1.00, 1.71)	1.26 (1.06, 1.51)	0.0106
Liver (C22)	Cases	27	85	76	114	302	
	HR (95%-CI), Model 0	1.00 (Ref.)	0.86 (0.55, 1.32)	0.72 (0.46, 1.13)	0.96 (0.62, 1.47)	1.03 (0.75, 1.43)	0.8388
	HR (95%-CI), Model 1	1.00 (Ref.)	0.96 (0.61, 1.49)	0.80 (0.50, 1.26)	1.01 (0.65, 1.58)	1.04 (0.75, 1.44)	0.8205
	HR (95%-CI), Model 2	1.00 (Ref.)	0.93 (0.60, 1.45)	0.76 (0.48, 1.21)	0.95 (0.61, 1.49)	0.99 (0.71, 1.38)	0.9467
Pancreas (C25)	Cases	43	189	166	210	608	
	HR (95%-CI), Model 0	1.00 (Ref.)	1.23 (0.89, 1.72)	1.09 (0.78, 1.53)	1.30 (0.93, 1.82)	1.17 (0.93, 1.47)	0.1823
	HR (95%-CI), Model 1	1.00 (Ref.)	1.22 (0.87, 1.71)	1.06 (0.75, 1.49)	1.19 (0.84, 1.67)	1.07 (0.84, 1.35)	0.5953
	HR (95%-CI), Model 2	1.00 (Ref.)	1.19 (0.85, 1.67)	1.02 (0.72, 1.44)	1.14 (0.80, 1.60)	1.03 (0.81, 1.31)	0.7995
Lung (C34)	Cases	143	514	593	817	2067	

	HR (95%-CI), Model 0	1.00 (Ref.)	0.99 (0.83, 1.20)	1.17 (0.98, 1.41)	1.55 (1.29, 1.86)	1.63 (1.43, 1.85)	<0.0001
	HR (95%-CI), Model 1	1.00 (Ref.)	0.97 (0.80, 1.17)	1.04 (0.86, 1.25)	1.16 (0.96, 1.40)	1.20 (1.05, 1.37)	0.0061
	HR (95%-CI), Model 2	1.00 (Ref.)	0.99 (0.82, 1.19)	1.07 (0.88, 1.29)	1.20 (0.99, 1.44)	1.22 (1.07, 1.40)	0.0025
Lung (C34) in never smokers	Total n/cases	26095 / 29	81561 / 96	75680 / 78	75491 / 67	258827 / 270	
	HR (95%-CI), Model 0	1.00 (Ref.)	0.99 (0.66, 1.51)	0.94 (0.61, 1.44)	0.90 (0.58, 1.41)	0.91 (0.65, 1.26)	0.5579
	HR (95%-CI), Model 1	1.00 (Ref.)	1.00 (0.66, 1.53)	0.94 (0.61, 1.47)	0.89 (0.56, 1.41)	0.89 (0.63, 1.25)	0.4969
	HR (95%-CI), Model 2	1.00 (Ref.)	1.02 (0.67, 1.56)	0.97 (0.62, 1.51)	0.92 (0.58, 1.46)	0.91 (0.65, 1.29)	0.6081
Malignant melanoma (C43)	Cases	108	506	499	492	1605	
	HR (95%-CI), Model 0	1.00 (Ref.)	1.35 (1.10, 1.67)	1.36 (1.10, 1.68)	1.26 (1.02, 1.56)	1.08 (0.94, 1.24)	0.2872
	HR (95%-CI), Model 1	1.00 (Ref.)	1.24 (1.01, 1.53)	1.23 (0.99, 1.52)	1.17 (0.94, 1.45)	1.04 (0.90, 1.20)	0.5880
	HR (95%-CI), Model 2	1.00 (Ref.)	1.22 (0.99, 1.50)	1.20 (0.97, 1.49)	1.14 (0.92, 1.41)	1.02 (0.89, 1.18)	0.7539
	HR (95%-CI), Model 3	1.00 (Ref.)	1.21 (0.98, 1.49)	1.19 (0.96, 1.47)	1.13 (0.91, 1.40)	1.02 (0.88, 1.18)	0.8077
Breast (C50) †	Total n/cases	32197 / 630	96955 / 2156	73137 / 1697	52620 / 1183	254909 / 5666	
	HR (95%-CI), Model 0	1.00 (Ref.)	1.12 (1.02, 1.22)	1.17 (1.07, 1.28)	1.15 (1.04, 1.27)	1.11 (1.04, 1.20)	0.0029
	HR (95%-CI), Model 1	1.00 (Ref.)	1.09 (1.00, 1.19)	1.14 (1.04, 1.25)	1.12 (1.01, 1.24)	1.09 (1.02, 1.18)	0.0174
	HR (95%-CI), Model 2	1.00 (Ref.)	1.06 (0.97, 1.16)	1.11 (1.01, 1.21)	1.07 (0.97, 1.19)	1.06 (0.98, 1.14)	0.1346
Endometrium (C54) †	Total n/cases	32197 / 85	96955 / 339	73137 / 262	52620 / 180	254909 / 866	
	HR (95%-CI), Model 0	1.00 (Ref.)	1.29 (1.02, 1.64)	1.35 (1.06, 1.73)	1.34 (1.03, 1.73)	1.22 (1.01, 1.47)	0.0349
	HR (95%-CI), Model 1	1.00 (Ref.)	1.40 (1.10, 1.79)	1.48 (1.15, 1.90)	1.45 (1.11, 1.89)	1.28 (1.06, 1.54)	0.0101
	HR (95%-CI), Model 2	1.00 (Ref.)	1.27 (1.00, 1.62)	1.27 (0.99, 1.64)	1.19 (0.91, 1.55)	1.09 (0.90, 1.31)	0.3835
Ovary (C56) †	Total n/cases	32197 / 73	96955 / 232	73137 / 159	52620 / 112	254909 / 576	
	HR (95%-CI), Model 0	1.00 (Ref.)	1.02 (0.79, 1.33)	0.94 (0.71, 1.24)	0.94 (0.70, 1.26)	0.92 (0.74, 1.15)	0.4720
	HR (95%-CI), Model 1	1.00 (Ref.)	1.06 (0.81, 1.38)	0.99 (0.75, 1.32)	0.99 (0.73, 1.34)	0.97 (0.77, 1.21)	0.7638
	HR (95%-CI), Model 2	1.00 (Ref.)	1.06 (0.81, 1.38)	0.99 (0.74, 1.31)	0.98 (0.73, 1.33)	0.96 (0.77, 1.21)	0.7421
Prostate (C61) ‡	Total n/cases	11849 / 276	46569 / 1374	64946 / 1868	94608 / 2424	217972 / 5942	
	HR (95%-CI), Model 0	1.00 (Ref.)	1.11 (0.98, 1.27)	1.11 (0.98, 1.27)	1.06 (0.94, 1.21)	0.99 (0.92, 1.06)	0.7157
	HR (95%-CI), Model 1	1.00 (Ref.)	1.08 (0.94, 1.23)	1.09 (0.95, 1.24)	1.05 (0.93, 1.20)	1.00 (0.93, 1.08)	0.9868
	HR (95%-CI), Model 2	1.00 (Ref.)	1.09 (0.95, 1.24)	1.10 (0.97, 1.25)	1.07 (0.94, 1.22)	1.01 (0.94, 1.10)	0.7137
	HR (95%-CI), Model 3	1.00 (Ref.)	1.08 (0.95, 1.24)	1.10 (0.97, 1.25)	1.07 (0.94, 1.22)	1.01 (0.94, 1.09)	0.7415
Kidney (C64-65)	Cases	56	226	220	282	784	
	HR (95%-CI), Model 0	1.00 (Ref.)	1.09 (0.81, 1.46)	1.00 (0.74, 1.34)	1.11 (0.83, 1.49)	1.07 (0.87, 1.31)	0.5196
	HR (95%-CI), Model 1	1.00 (Ref.)	1.07 (0.80, 1.44)	0.98 (0.72, 1.32)	1.07 (0.80, 1.45)	1.04 (0.84, 1.28)	0.7367
	HR (95%-CI), Model 2	1.00 (Ref.)	1.00 (0.75, 1.35)	0.89 (0.66, 1.21)	0.96 (0.71, 1.30)	0.96 (0.78, 1.18)	0.6779
Bladder (C67)	Cases	29	162	207	234	632	
	HR (95%-CI), Model 0	1.00 (Ref.)	1.40 (0.94, 2.08)	1.53 (1.03, 2.26)	1.42 (0.96, 2.10)	1.15 (0.92, 1.45)	0.2258
	HR (95%-CI), Model 1	1.00 (Ref.)	1.32 (0.88, 1.96)	1.38 (0.93, 2.05)	1.21 (0.81, 1.80)	1.00 (0.79, 1.27)	0.9828
	HR (95%-CI), Model 2	1.00 (Ref.)	1.29 (0.86, 1.92)	1.34 (0.90, 1.99)	1.16 (0.78, 1.73)	0.97 (0.77, 1.24)	0.8295
Lymphatic and hematopoietic	Cases	197	712	794	772	2475	

tissues (C81-96)	HR (95%-CI), Model 0	1.00 (Ref.)	1.01 (0.86, 1.18)	1.11 (0.95, 1.30)	0.98 (0.84, 1.15)	0.99 (0.88, 1.10)	0.7964
	HR (95%-CI), Model 1	1.00 (Ref.)	1.01 (0.86, 1.18)	1.11 (0.95, 1.31)	0.98 (0.84, 1.16)	0.98 (0.88, 1.10)	0.7854
	HR (95%-CI), Model 2	1.00 (Ref.)	1.01 (0.86, 1.18)	1.11 (0.94, 1.30)	0.98 (0.83, 1.15)	0.98 (0.87, 1.10)	0.7475
	Cases	92	338	385	374	1189	
Non-Hodgkin lymphoma (C82-85)	HR (95%-CI), Model 0	1.00 (Ref.)	1.03 (0.82, 1.30)	1.18 (0.94, 1.49)	1.06 (0.84, 1.34)	1.06 (0.90, 1.24)	0.5086
	HR (95%-CI), Model 1	1.00 (Ref.)	1.04 (0.83, 1.32)	1.20 (0.95, 1.51)	1.07 (0.84, 1.36)	1.06 (0.89, 1.25)	0.5137
	HR (95%-CI), Model 2	1.00 (Ref.)	1.04 (0.82, 1.31)	1.19 (0.94, 1.50)	1.06 (0.84, 1.35)	1.05 (0.89, 1.24)	0.5599
	Cases	92	338	385	374	1189	
Multiple myeloma (C90)	HR (95%-CI), Model 0	1.00 (Ref.)	1.06 (0.73, 1.55)	1.13 (0.77, 1.65)	1.05 (0.72, 1.54)	1.03 (0.78, 1.34)	0.8536
	HR (95%-CI), Model 1	1.00 (Ref.)	1.08 (0.74, 1.59)	1.18 (0.80, 1.74)	1.11 (0.75, 1.64)	1.07 (0.81, 1.41)	0.6224
	HR (95%-CI), Model 2	1.00 (Ref.)	1.08 (0.74, 1.59)	1.18 (0.80, 1.74)	1.10 (0.74, 1.63)	1.06 (0.81, 1.40)	0.6574
	Cases	34	128	137	138	437	
Leukaemia (C91-C95)	HR (95%-CI), Model 0	1.00 (Ref.)	0.98 (0.74, 1.31)	0.99 (0.74, 1.32)	0.86 (0.64, 1.15)	0.86 (0.70, 1.06)	0.1677
	HR (95%-CI), Model 1	1.00 (Ref.)	0.94 (0.70, 1.25)	0.94 (0.70, 1.26)	0.80 (0.59, 1.08)	0.82 (0.66, 1.02)	0.0692
	HR (95%-CI), Model 2	1.00 (Ref.)	0.94 (0.70, 1.26)	0.94 (0.70, 1.26)	0.80 (0.59, 1.08)	0.82 (0.67, 1.02)	0.0756
	Cases	59	214	227	221	721	

Bold where $p < 0.05$. CI, Confidence interval; HR, Hazard ratio; LR, likelihood ratio test.

Model 0: Stratified for sex, age group and region and adjusted for age (underlying time variable), ethnicity (4 groups where possible: White, Asian or Asian British, Black or Black British, Mixed race or other, unknown).

Model 1: Model 0 + deprivation (Townsend index quintiles, unknown), qualification (college or university degree/vocational qualification, national examination at ages 17-18, national examination at age 16, other/unknown), employment (in paid employment, receiving pension, not in paid employment, unknown), living with a spouse or partner (yes, no, unknown), height (sex-specific quintiles, unknown), smoking (never, former, current <15 cigarettes/day, current ≥ 15 cigarettes/day, current unknown amount of cigarettes/day, unknown), physical activity (<10 excess metabolic equivalents, 10-<50 excess metabolic equivalents, ≥ 50 excess metabolic equivalents, unknown), alcohol intake (none, <1 g/day, 1-<10 g/day, 10-<20 g/day, ≥ 20 g/day, unknown), total fruit and vegetable intake (< 3 servings/day, 3-< 4 servings/day, 4-< 6 servings/day, ≥ 6 servings/day, unknown), estimated cereal fibre intake (sex-specific quintiles, unknown), in women: menopausal status (pre-, postmenopausal, unknown), parity (nulliparous, 1-2, ≥ 3 , unknown), hormone-replacement therapy use (never, past, current, unknown) and oral contraceptive pill use (never, past, current, unknown).

Model 2: Model 1 + body mass index (sex-specific quintiles, unknown).

Model 3: For malignant melanoma: Model 2 + skin colour (very fair, fair, light olive, dark olive, brown/black, unknown), hair colour (blonde, red, light brown, dark brown, black, other/unknown), skin reaction (get very tanned, moderately tanning, mildly/occasionally tanning, never tanning only burning, unknown), UV protection use (never/rarely, sometimes, most of the time, always, do not go out in the sunshine, unknown), sunburns before age 15 (never, ever, unknown), solarium use (never, >0-2 times/year, ≥ 3 times/year, unknown); for prostate cancer: Model 2 + enlarged prostate (yes, no, unknown).

* In 22 cases of colorectal cancer (C18/20) colon (C18) and rectal cancer (C19-20) diagnoses coincided.

† Analyses restricted to women.

‡ Analyses restricted to men.

S8 Table. Hazard ratios and 95% confidence intervals of cancer incidence by site according to poultry intake in UK Biobank

Site (ICD-10)	Model	Poultry intake (times/week), (mean g/day)				P _{trend}
		<1 (12.2)	1-<2 (27.4)	≥2 (39.4)	per 30 g higher intake	
Oral (C00-C14)	Total n	75015	169479	228554	473048	
	Cases	103	193	262	558	
	HR (95%-CI), Model 0	1.00 (Ref.)	0.79 (0.63, 1.01)	0.84 (0.67, 1.05)	0.85 (0.66, 1.10)	0.2263
	HR (95%-CI), Model 1	1.00 (Ref.)	0.86 (0.67, 1.09)	0.96 (0.76, 1.21)	0.99 (0.77, 1.28)	0.9419
Oesophagus (C15)	HR (95%-CI), Model 2	1.00 (Ref.)	0.87 (0.68, 1.11)	0.98 (0.78, 1.24)	1.02 (0.79, 1.32)	0.8955
	Cases	79	221	233	533	
	HR (95%-CI), Model 0	1.00 (Ref.)	1.16 (0.89, 1.50)	1.06 (0.82, 1.37)	1.02 (0.78, 1.33)	0.8765
	HR (95%-CI), Model 1	1.00 (Ref.)	1.25 (0.96, 1.62)	1.19 (0.92, 1.54)	1.15 (0.88, 1.51)	0.3008
Stomach (C16)	HR (95%-CI), Model 2	1.00 (Ref.)	1.23 (0.95, 1.60)	1.16 (0.89, 1.50)	1.12 (0.86, 1.47)	0.4092
	Cases	60	130	166	356	
	HR (95%-CI), Model 0	1.00 (Ref.)	0.89 (0.65, 1.21)	0.98 (0.73, 1.32)	1.02 (0.73, 1.41)	0.9138
	HR (95%-CI), Model 1	1.00 (Ref.)	0.95 (0.69, 1.29)	1.07 (0.79, 1.45)	1.11 (0.80, 1.55)	0.5180
Colorectum (C18-20)*	HR (95%-CI), Model 2	1.00 (Ref.)	0.94 (0.69, 1.27)	1.05 (0.78, 1.42)	1.09 (0.78, 1.52)	0.6074
	Cases	485	1274	1467	3226	
	HR (95%-CI), Model 0	1.00 (Ref.)	1.11 (1.00, 1.23)	1.07 (0.96, 1.18)	1.05 (0.94, 1.17)	0.3923
	HR (95%-CI), Model 1	1.00 (Ref.)	1.09 (0.98, 1.21)	1.05 (0.95, 1.16)	1.03 (0.92, 1.15)	0.5858
Colon (C18)	HR (95%-CI), Model 2	1.00 (Ref.)	1.08 (0.97, 1.20)	1.03 (0.93, 1.15)	1.01 (0.91, 1.13)	0.8256
	Cases	328	829	976	2133	
	HR (95%-CI), Model 0	1.00 (Ref.)	1.06 (0.93, 1.21)	1.05 (0.92, 1.19)	1.04 (0.91, 1.19)	0.5686
	HR (95%-CI), Model 1	1.00 (Ref.)	1.04 (0.92, 1.19)	1.03 (0.91, 1.17)	1.02 (0.89, 1.17)	0.7603
Rectum (C19-20)	HR (95%-CI), Model 2	1.00 (Ref.)	1.03 (0.90, 1.17)	1.00 (0.88, 1.14)	0.99 (0.87, 1.14)	0.9238
	Cases	162	455	498	1115	
	HR (95%-CI), Model 0	1.00 (Ref.)	1.19 (0.99, 1.42)	1.09 (0.91, 1.30)	1.05 (0.87, 1.26)	0.6275
	HR (95%-CI), Model 1	1.00 (Ref.)	1.17 (0.97, 1.40)	1.07 (0.90, 1.29)	1.03 (0.86, 1.25)	0.7341
Liver (C22)	HR (95%-CI), Model 2	1.00 (Ref.)	1.17 (0.97, 1.40)	1.07 (0.90, 1.29)	1.03 (0.86, 1.24)	0.7441
	Cases	55	109	139	303	
	HR (95%-CI), Model 0	1.00 (Ref.)	0.83 (0.60, 1.15)	0.89 (0.65, 1.22)	0.92 (0.65, 1.30)	0.6191
	HR (95%-CI), Model 1	1.00 (Ref.)	0.92 (0.66, 1.28)	1.01 (0.74, 1.39)	1.04 (0.73, 1.48)	0.8204
Pancreas (C25)	HR (95%-CI), Model 2	1.00 (Ref.)	0.91 (0.66, 1.27)	0.99 (0.72, 1.36)	1.01 (0.71, 1.44)	0.9461
	Cases	105	244	257	606	
	HR (95%-CI), Model 0	1.00 (Ref.)	0.98 (0.78, 1.23)	0.88 (0.70, 1.11)	0.86 (0.67, 1.09)	0.2113
	HR (95%-CI), Model 1	1.00 (Ref.)	1.01 (0.80, 1.28)	0.93 (0.74, 1.18)	0.91 (0.71, 1.17)	0.4727
Lung (C34)	HR (95%-CI), Model 2	1.00 (Ref.)	1.00 (0.79, 1.26)	0.91 (0.72, 1.15)	0.89 (0.69, 1.14)	0.3503
	Cases	410	800	855	2065	
	HR (95%-CI), Model 0	1.00 (Ref.)	0.81 (0.72, 0.92)	0.74 (0.66, 0.83)	0.72 (0.64, 0.82)	<0.0001
	HR (95%-CI), Model 1	1.00 (Ref.)	0.92 (0.81, 1.03)	0.92 (0.82, 1.04)	0.93 (0.81, 1.06)	0.2536
Lung (C34) in never smokers	HR (95%-CI), Model 2	1.00 (Ref.)	0.92 (0.82, 1.04)	0.94 (0.83, 1.06)	0.94 (0.83, 1.08)	0.3940
	Total n/cases	39774 / 46	91572 / 88	127694 / 136	259040 / 270	
	HR (95%-CI), Model 0	1.00 (Ref.)	0.80 (0.56, 1.15)	1.03 (0.74, 1.45)	1.13 (0.78, 1.66)	0.5129
	HR (95%-CI), Model 1	1.00 (Ref.)	0.82 (0.57, 1.17)	1.07 (0.76, 1.50)	1.18 (0.80, 1.73)	0.4021
	HR (95%-CI), Model 2	1.00 (Ref.)	0.83 (0.58, 1.19)	1.09 (0.78, 1.54)	1.21 (0.82, 1.78)	0.3321

Malignant melanoma (C43)	Cases	229	594	785	1608	
	HR (95%-CI), Model 0	1.00 (Ref.)	1.12 (0.96, 1.30)	1.19 (1.02, 1.38)	1.20 (1.03, 1.40)	0.0209
	HR (95%-CI), Model 1	1.00 (Ref.)	1.04 (0.89, 1.22)	1.10 (0.95, 1.28)	1.12 (0.96, 1.31)	0.1588
	HR (95%-CI), Model 2	1.00 (Ref.)	1.03 (0.89, 1.20)	1.09 (0.93, 1.26)	1.10 (0.94, 1.29)	0.2281
	HR (95%-CI), Model 3	1.00 (Ref.)	1.02 (0.88, 1.19)	1.06 (0.91, 1.24)	1.08 (0.92, 1.26)	0.3657
Breast (C50) †	Total n/cases	41883 / 900	88925 / 2031	124256 / 2745	255064 / 5676	
	HR (95%-CI), Model 0	1.00 (Ref.)	1.04 (0.96, 1.12)	1.04 (0.96, 1.12)	1.03 (0.95, 1.12)	0.4225
	HR (95%-CI), Model 1	1.00 (Ref.)	1.04 (0.96, 1.12)	1.05 (0.97, 1.13)	1.05 (0.97, 1.14)	0.2410
	HR (95%-CI), Model 2	1.00 (Ref.)	1.02 (0.94, 1.10)	1.02 (0.94, 1.10)	1.02 (0.94, 1.10)	0.7059
Endometrium (C54) †	Total n/cases	41883 / 144	88925 / 296	124256 / 428	255064 / 868	
	HR (95%-CI), Model 0	1.00 (Ref.)	0.93 (0.76, 1.13)	1.04 (0.86, 1.25)	1.08 (0.88, 1.33)	0.4777
	HR (95%-CI), Model 1	1.00 (Ref.)	1.00 (0.82, 1.22)	1.15 (0.95, 1.40)	1.21 (0.98, 1.49)	0.0770
	HR (95%-CI), Model 2	1.00 (Ref.)	0.94 (0.77, 1.15)	1.02 (0.84, 1.23)	1.05 (0.85, 1.29)	0.6682
Ovary (C56) †	Total n/cases	41883 / 97	88925 / 201	124256 / 281	255064 / 579	
	HR (95%-CI), Model 0	1.00 (Ref.)	0.93 (0.73, 1.19)	1.00 (0.79, 1.26)	1.02 (0.79, 1.31)	0.8865
	HR (95%-CI), Model 1	1.00 (Ref.)	0.98 (0.77, 1.25)	1.06 (0.84, 1.34)	1.08 (0.84, 1.40)	0.5369
	HR (95%-CI), Model 2	1.00 (Ref.)	0.98 (0.77, 1.25)	1.05 (0.83, 1.33)	1.08 (0.84, 1.39)	0.5587
Prostate (C61) ‡	Total n/cases	33132 / 873	80554 / 2440	104298 / 2633	217984 / 5946	
	HR (95%-CI), Model 0	1.00 (Ref.)	1.14 (1.05, 1.23)	1.12 (1.04, 1.21)	1.10 (1.02, 1.19)	0.0179
	HR (95%-CI), Model 1	1.00 (Ref.)	1.11 (1.03, 1.20)	1.08 (1.00, 1.16)	1.06 (0.98, 1.15)	0.1739
	HR (95%-CI), Model 2	1.00 (Ref.)	1.11 (1.03, 1.20)	1.09 (1.00, 1.17)	1.07 (0.98, 1.16)	0.1152
	HR (95%-CI), Model 3	1.00 (Ref.)	1.11 (1.03, 1.20)	1.08 (1.00, 1.17)	1.07 (0.98, 1.16)	0.1262
Kidney (C64-65)	Cases	135	287	361	783	
	HR (95%-CI), Model 0	1.00 (Ref.)	0.89 (0.72, 1.09)	0.94 (0.77, 1.15)	0.97 (0.78, 1.20)	0.7547
	HR (95%-CI), Model 1	1.00 (Ref.)	0.90 (0.74, 1.11)	0.98 (0.80, 1.20)	1.01 (0.81, 1.26)	0.9159
	HR (95%-CI), Model 2	1.00 (Ref.)	0.88 (0.71, 1.08)	0.93 (0.76, 1.13)	0.95 (0.76, 1.18)	0.6334
Bladder (C67)	Cases	119	230	283	632	
	HR (95%-CI), Model 0	1.00 (Ref.)	0.80 (0.64, 0.99)	0.88 (0.71, 1.09)	0.91 (0.71, 1.16)	0.4305
	HR (95%-CI), Model 1	1.00 (Ref.)	0.82 (0.65, 1.02)	0.94 (0.75, 1.16)	0.98 (0.76, 1.25)	0.8429
	HR (95%-CI), Model 2	1.00 (Ref.)	0.81 (0.65, 1.02)	0.92 (0.74, 1.14)	0.95 (0.75, 1.22)	0.7123
Lymphatic and hematopoietic tissues (C81-96)	Cases	355	970	1149	2474	
	HR (95%-CI), Model 0	1.00 (Ref.)	1.16 (1.02, 1.31)	1.15 (1.02, 1.30)	1.13 (1.00, 1.29)	0.0469
	HR (95%-CI), Model 1	1.00 (Ref.)	1.18 (1.04, 1.33)	1.18 (1.05, 1.33)	1.17 (1.03, 1.32)	0.0175
	HR (95%-CI), Model 2	1.00 (Ref.)	1.18 (1.04, 1.33)	1.18 (1.04, 1.33)	1.16 (1.03, 1.32)	0.0188
Non-Hodgkin lymphoma (C82-85)	Cases	169	465	553	1187	
	HR (95%-CI), Model 0	1.00 (Ref.)	1.17 (0.98, 1.39)	1.16 (0.98, 1.38)	1.14 (0.95, 1.37)	0.1496
	HR (95%-CI), Model 1	1.00 (Ref.)	1.19 (1.00, 1.42)	1.19 (1.00, 1.42)	1.18 (0.98, 1.41)	0.0797
	HR (95%-CI), Model 2	1.00 (Ref.)	1.19 (0.99, 1.42)	1.19 (1.00, 1.42)	1.17 (0.98, 1.41)	0.0905
Multiple myeloma (C90)	Cases	62	177	197	436	
	HR (95%-CI), Model 0	1.00 (Ref.)	1.21 (0.91, 1.62)	1.14 (0.85, 1.51)	1.09 (0.81, 1.47)	0.5534
	HR (95%-CI), Model 1	1.00 (Ref.)	1.23 (0.92, 1.65)	1.14 (0.86, 1.53)	1.09 (0.81, 1.47)	0.5555
	HR (95%-CI), Model 2	1.00 (Ref.)	1.23 (0.92, 1.65)	1.14 (0.85, 1.52)	1.09 (0.81, 1.47)	0.5696
Leukaemia (C91-C95)	Cases	109	288	326	723	

HR (95%-CI), Model 0	1.00 (Ref.)	1.11 (0.89, 1.38)	1.07 (0.86, 1.33)	1.05 (0.83, 1.32)	0.6802
HR (95%-CI), Model 1	1.00 (Ref.)	1.12 (0.89, 1.39)	1.09 (0.88, 1.36)	1.08 (0.85, 1.36)	0.5293
HR (95%-CI), Model 2	1.00 (Ref.)	1.12 (0.89, 1.40)	1.10 (0.88, 1.37)	1.08 (0.86, 1.37)	0.5059

Bold where p < 0.05. CI, Confidence interval; HR, Hazard ratio; LR, likelihood ratio test.

Model 0: Stratified for sex, age group and region and adjusted for age (underlying time variable), ethnicity (4 groups where possible: White, Asian or Asian British, Black or Black British, Mixed race or other, unknown).

Model 1: Model 0 + deprivation (Townsend index quintiles, unknown), qualification (college or university degree/vocational qualification, national examination at ages 17-18, national examination at age 16, other/unknown), employment (in paid employment, receiving pension, not in paid employment, unknown), living with a spouse or partner (yes, no, unknown), height (sex-specific quintiles, unknown), smoking (never, former, current <15 cigarettes/day, current ≥15 cigarettes/day, current unknown amount of cigarettes/day, unknown), physical activity (<10 excess metabolic equivalents, 10-<50 excess metabolic equivalents, ≥50 excess metabolic equivalents, unknown), alcohol intake (none, <1 g/day, 1-<10 g/day, 10-<20 g/day, ≥20 g/day, unknown), total fruit and vegetable intake (< 3 servings/day, 3-< 4 servings/day, 4-< 6 servings/day, ≥ 6 servings/day, unknown), estimated cereal fibre intake (sex-specific quintiles, unknown), in women: menopausal status (pre-, postmenopausal, unknown), parity (nulliparous, 1-2, ≥3, unknown), hormone-replacement therapy use (never, past, current, unknown) and oral contraceptive pill use (never, past, current, unknown).

Model 2: Model 1 + body mass index (sex-specific quintiles, unknown).

Model 3: For malignant melanoma: Model 2 + skin colour (very fair, fair, light olive, dark olive, brown/black, unknown), hair colour (blonde, red, light brown, dark brown, black, other/unknown), skin reaction (get very tanned, moderately tanning, mildly/occasionally tanning, never tanning only burning, unknown), UV protection use (never/rarely, sometimes, most of the time, always, do not go out in the sunshine, unknown), sunburns before age 15 (never, ever, unknown), solarium use (never, >0-2 times/year, ≥3 times/year, unknown); for prostate cancer: Model 2 + enlarged prostate (yes, no, unknown).

* In 22 cases of colorectal cancer (C18/20) colon (C18) and rectal cancer (C19-20) diagnoses coincided.

† Analyses restricted to women.

‡ Analyses restricted to men.

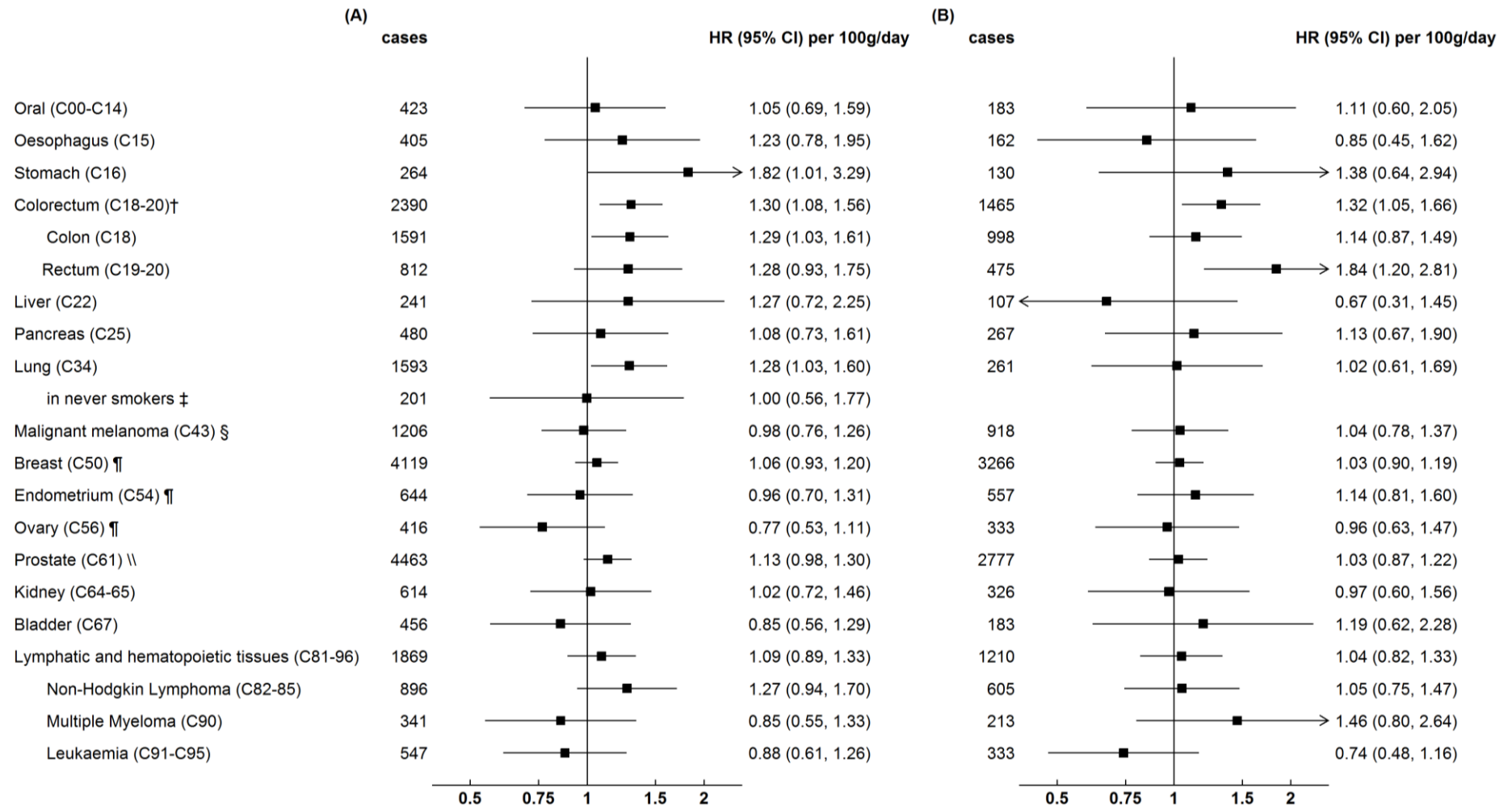
S9 Table. Multivariable adjusted hazard ratios and 95% confidence intervals of colorectal, colon and rectal cancer incidence by meat type and sex in UK Biobank*

Meat type (increment)	Women			Men		
	per increment higher intake	P _{trend}	per increment higher intake	P _{trend}	LR test for interaction	
Total meat intake (100 g)						
	Total n	252268		215152		
Colorectum (C18-20)	Cases	1342		1852		
	HR (95%-CI)	1.15 (0.92, 1.44)	0.2087	1.46 (1.16, 1.85)	0.0013	0.0196
Colon (C18)	Cases	985		1126		
	HR (95%-CI)	1.29 (0.99, 1.67)	0.0601	1.31 (0.98, 1.76)	0.0707	0.3711
Rectum (C19-20)	Cases	369		736		
	HR (95%-CI)	0.87 (0.58, 1.30)	0.4869	1.67 (1.14, 2.43)	0.0077	0.0059
Red and processed meat intake (70 g)						
	Total n	252422		215355		
Colorectum (C18-20)	Cases	1345		1855		
	HR (95%-CI)	1.16 (0.95, 1.42)	0.1480	1.51 (1.22, 1.86)	0.0001	0.0073
Colon (C18)	Cases	987		1127		
	HR (95%-CI)	1.26 (0.99, 1.60)	0.0569	1.59 (1.21, 2.09)	0.0009	0.0404
Rectum (C19-20)	Cases	370		738		
	HR (95%-CI)	0.91 (0.63, 1.32)	0.6232	1.41 (1.01, 1.95)	0.0417	0.0285
Red meat intake (50 g)						
	Total n	252745		215619		
Colorectum (C18-20)	Cases	1345		1856		
	HR (95%-CI)	1.09 (0.88, 1.34)	0.4425	1.38 (1.11, 1.70)	0.0031	0.0160
Colon (C18)	Cases	987		1127		
	HR (95%-CI)	1.16 (0.91, 1.49)	0.2395	1.61 (1.22, 2.13)	0.0008	0.0196
Rectum (C19-20)	Cases	370		739		
	HR (95%-CI)	0.88 (0.60, 1.30)	0.5241	1.11 (0.80, 1.53)	0.5409	0.1962
Processed meat intake (20 g)						
	Total n	254909		217972		
Colorectum (C18-20)	Cases	1356		1872		
	HR (95%-CI)	1.10 (0.94, 1.28)	0.2295	1.26 (1.09, 1.45)	0.0021	0.0371
Colon (C18)	Cases	993		1141		
	HR (95%-CI)	1.07 (0.90, 1.28)	0.4338	1.21 (1.00, 1.45)	0.0477	0.1232
Rectum (C19-20)	Cases	375		741		
	HR (95%-CI)	1.14 (0.85, 1.52)	0.3835	1.35 (1.07, 1.71)	0.0104	0.1480
Poultry intake (30 g)						
	Total n	255064		217984		
Colorectum (C18-20)	Cases	1355		1871		
	HR (95%-CI)	0.91 (0.77, 1.07)	0.2456	1.12 (0.96, 1.30)	0.1394	0.0216
Colon (C18)	Cases	993		1140		
	HR (95%-CI)	0.98 (0.80, 1.19)	0.8316	1.02 (0.85, 1.23)	0.8309	0.4305
Rectum (C19-20)	Cases	374		741		
	HR (95%-CI)	0.73 (0.54, 0.99)	0.0455	1.27 (1.00, 1.61)	0.0487	0.0033

Bold where p < 0.05. CI, Confidence interval; HR, Hazard ratio; LR, likelihood ratio test.

*Hazard ratios stratified for age group and region and adjusted for age (underlying time variable), ethnicity (4 groups where possible: White, Asian or Asian British, Black or Black British, Mixed race or other, unknown), deprivation (Townsend index quintiles, unknown), qualification (college or university degree/vocational qualification, national examination at ages 17-18, national examination at age 16, other/unknown), employment (in paid employment, receiving pension, not in paid employment, unknown), living with a spouse or partner (yes, no, unknown), height (sex-specific quintiles, unknown), smoking (never, former, current <15 cigarettes/day, current ≥15 cigarettes/day, current unknown amount of cigarettes/day, unknown), physical activity (<10 excess metabolic equivalents, 10-<50 excess metabolic equivalents, ≥50 excess metabolic equivalents, unknown), alcohol intake (none, <1 g/day, 1-<10 g/day, 10-<20 g/day, ≥20 g/day, unknown), total fruit and vegetable intake (<3 servings/day, 3-<4 servings/day, 4-<6 servings/day, ≥6 servings/day, unknown), estimated cereal fibre intake (sex-specific quintiles, unknown), in women: menopausal status (pre-, postmenopausal, unknown), parity (nulliparous, 1-2, ≥3, unknown), hormone-replacement therapy (never, past, current, unknown) and oral contraceptive pill use (never, past, current, unknown), body mass index (sex-specific quintiles, unknown).

Supplementary figures



S1 Fig. Associations of total meat intake and cancer incidence by cancer site (per 100g/day) when excluding first 2 years of follow-up (A, n = 459,363) and including only never smokers (B, n = 256,009)*

CI, Confidence interval; HR, Hazard ratio.

* Stratified for sex, age group (<45, 45-<50, 50-<55, 55-<60, 60-<65 and ≥65 years) and region (London, Wales, North-West, North-East, Yorkshire and Humber, West Midlands, East Midlands, South-East, South-West, Scotland) and adjusted for age (underlying time variable), ethnicity (4 groups where possible: White, Asian or Asian British, Black or Black British, Mixed race or other, unknown), deprivation (Townsend index quintiles, unknown), qualification (college or university degree/vocational qualification, national examination at ages 17-18, national examination at age 16, other/unknown), employment (in paid employment, receiving pension, not in paid employment, unknown), living with a spouse or partner (yes, no, unknown), height (sex-specific quintiles, unknown), smoking (never, former, current <15 cigarettes/day, current ≥15 cigarettes/day, current unknown amount of cigarettes/day, unknown), physical activity (<10 excess metabolic equivalents, 10-<50 excess metabolic equivalents, ≥50 excess metabolic equivalents, unknown), alcohol intake (none, <1 g/day, 1-<10 g/day, 10-<20 g/day, ≥20 g/day, unknown), total fruit and vegetable intake (<3 servings/day, 3-<4 servings/day, 4-<6 servings/day, ≥6 servings/day, unknown), estimated cereal fibre intake (sex-specific quintiles, unknown), body mass index (sex-specific quintiles, unknown), in women: menopausal status (pre-, postmenopausal, unknown), parity (nulliparous, 1-2, ≥3, unknown), hormone-replacement therapy (never, past, current, unknown) and oral contraceptive pill use (never, past, current, unknown).

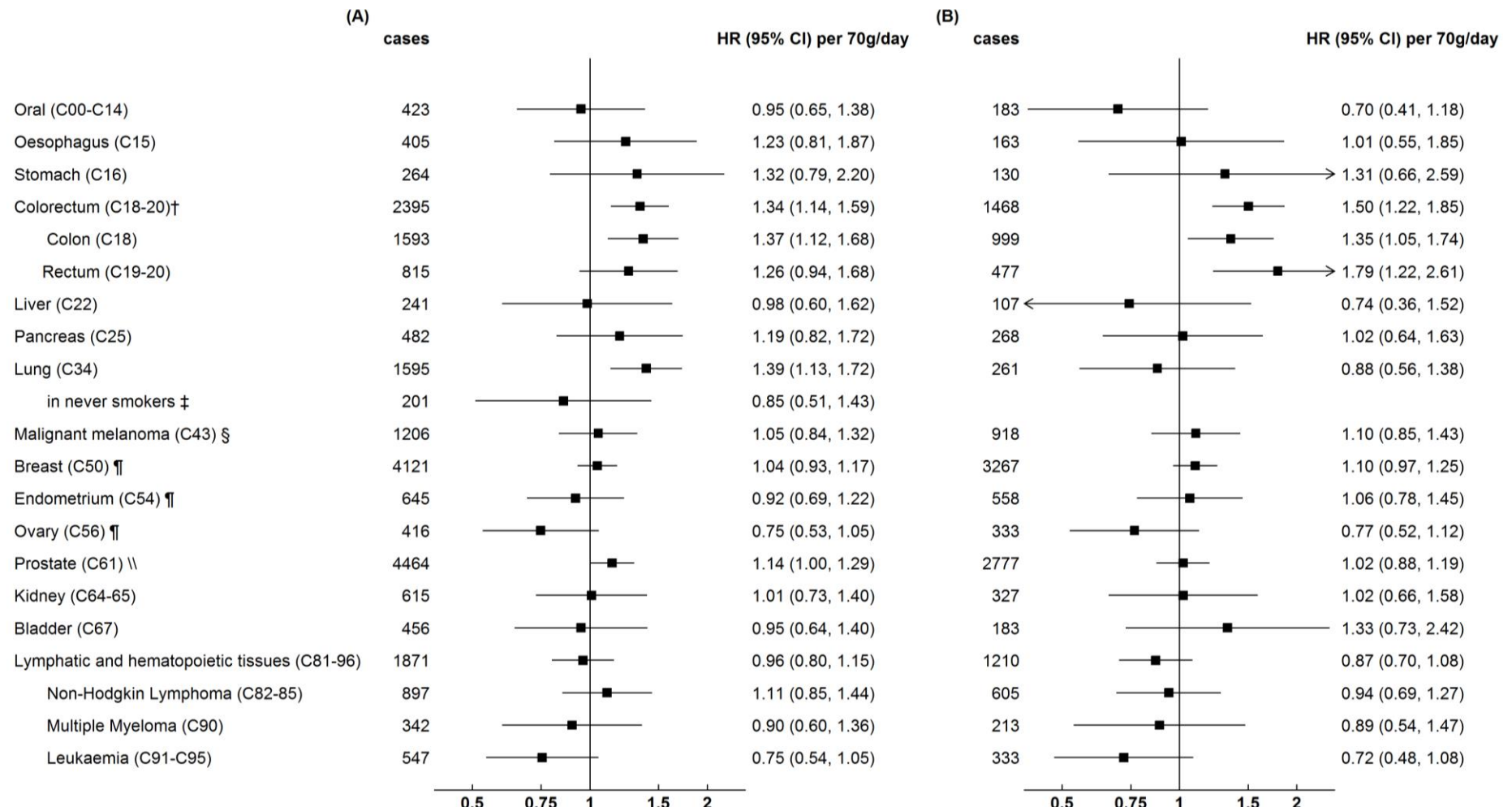
† In 13 (A) and 8 (B) cases of colorectal cancer (C18/20) colon (C18) and rectal cancer (C19-20) diagnoses coincided.

‡ Analyses restricted to never smokers (A: n = 252,436).

§ Additionally adjusted for skin colour (very fair, fair, light olive, dark olive, brown/black, unknown), hair colour (blonde, red, light brown, dark brown, black, other/unknown), skin reaction (get very tanned, moderately tanning, mildly/occasionally tanning, never tanning only burning, unknown), UV protection use (never/rarely, sometimes, most of the time, always, do not go out in the sunshine, unknown), sunburns before age 15 (never, ever, unknown), solarium use (never, >0-2 times/year, ≥3 times/year, unknown).

¶ Analyses restricted to women (A: n = 248,520; B: n = 150,480).

\\ Analyses restricted to men (A: n = 210,843; B: n = 105,529).



S2 Fig. Associations of red and processed meat intake and cancer incidence by cancer site (per 70g/day) when excluding first 2 years of follow-up (A, n = 459,713) and including only never smokers (B, n = 256,182)*

CI, Confidence interval; HR, Hazard ratio.

* Stratified for sex, age group (<45, 45-<50, 50-<55, 55-<60, 60-<65 and ≥65 years) and region (London, Wales, North-West, North-East, Yorkshire and Humber, West Midlands, East Midlands, South-East, South-West, Scotland) and adjusted for age (underlying time variable), ethnicity (4 groups where possible: White, Asian or Asian British, Black or Black British, Mixed race or other, unknown), deprivation (Townsend index quintiles, unknown), qualification (college or university degree/vocational qualification, national examination at ages 17-18, national examination at age 16, other/unknown), employment (in paid employment, receiving pension, not in paid employment, unknown), living with a spouse or partner (yes, no, unknown), height (sex-specific quintiles, unknown), smoking (never, former, current <15 cigarettes/day, current ≥15 cigarettes/day, current unknown amount of cigarettes/day, unknown), physical activity (<10 excess metabolic equivalents, 10-<50 excess metabolic equivalents, ≥50 excess metabolic

equivalents, unknown), alcohol intake (none, <1 g/day, 1-<10 g/day, 10-<20 g/day, ≥20 g/day, unknown), total fruit and vegetable intake (<3 servings/day, 3-<4 servings/day, 4-<6 servings/day, ≥6 servings/day, unknown), estimated cereal fibre intake (sex-specific quintiles, unknown), body mass index (sex-specific quintiles, unknown), in women: menopausal status (pre-, postmenopausal, unknown), parity (nulliparous, 1-2, ≥3, unknown), hormone-replacement therapy (never, past, current, unknown) and oral contraceptive pill use (never, past, current, unknown).

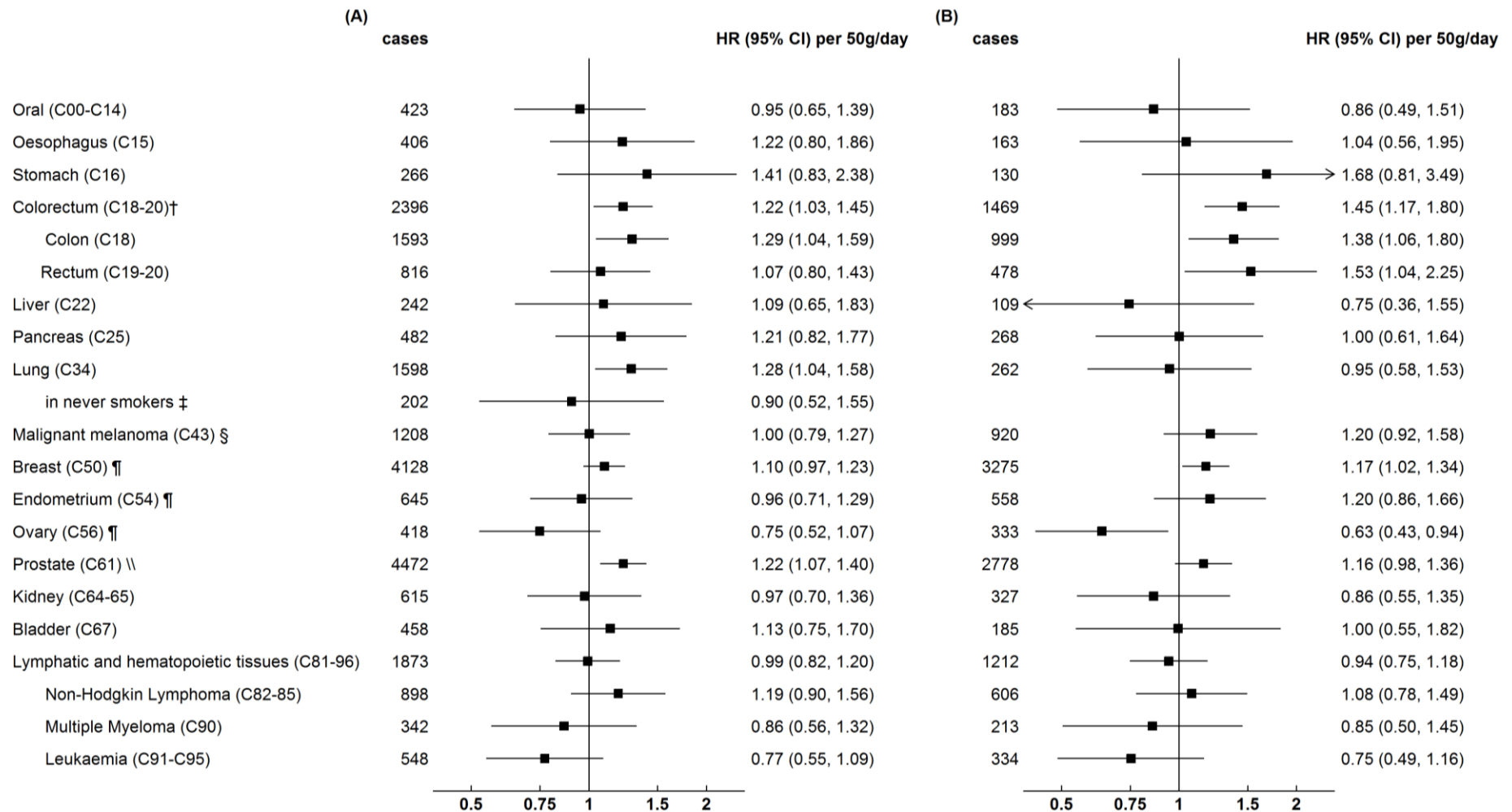
† In 13 (A) and 8 (B) cases of colorectal cancer (C18/20) colon (C18) and rectal cancer (C19-20) diagnoses coincided.

‡ Analyses restricted to never smokers (A: n = 252,608).

§ Additionally adjusted for skin colour (very fair, fair, light olive, dark olive, brown/black, unknown), hair colour (blonde, red, light brown, dark brown, black, other/unknown), skin reaction (get very tanned, moderately tanning, mildly/occasionally tanning, never tanning only burning, unknown), UV protection use (never/rarely, sometimes, most of the time, always, do not go out in the sunshine, unknown), sunburns before age 15 (never, ever, unknown), solarium use (never, >0-2 times/year, ≥3 times/year, unknown).

¶ Analyses restricted to women (A: n = 248,673; B: n = 150,571).

\\ Analyses restricted to men (A: n = 211,040; B: n = 105,611).



S3 Fig. Associations of red meat intake and cancer incidence by cancer site (per 50g/day) when excluding first 2 years of follow-up (A, n = 460,288) and including only never smokers (B, n = 256,545)*

CI, Confidence interval; HR, Hazard ratio.

* Stratified for sex, age group (<45, 45-<50, 50-<55, 55-<60, 60-<65 and ≥65 years) and region (London, Wales, North-West, North-East, Yorkshire and Humber, West Midlands, East Midlands, South-East, South-West, Scotland) and adjusted for age (underlying time variable), ethnicity (4 groups where possible: White, Asian or Asian British, Black or Black British, Mixed race or other, unknown), deprivation (Townsend index quintiles, unknown), qualification (college or university degree/vocational qualification, national examination at ages 17-18, national examination at age 16, other/unknown), employment (in paid employment, receiving pension, not in paid employment, unknown), living with a spouse or partner (yes, no, unknown), height (sex-specific quintiles, unknown), smoking (never, former, current <15 cigarettes/day, current ≥15 cigarettes/day, current unknown amount of cigarettes/day, unknown), physical activity (<10 excess metabolic equivalents, 10-<50 excess metabolic equivalents, ≥50 excess metabolic

equivalents, unknown), alcohol intake (none, <1 g/day, 1-<10 g/day, 10-<20 g/day, ≥20 g/day, unknown), total fruit and vegetable intake (<3 servings/day, 3-<4 servings/day, 4-<6 servings/day, ≥6 servings/day, unknown), estimated cereal fibre intake (sex-specific quintiles, unknown), body mass index (sex-specific quintiles, unknown), in women: menopausal status (pre-, postmenopausal, unknown), parity (nulliparous, 1-2, ≥3, unknown), hormone-replacement therapy (never, past, current, unknown) and oral contraceptive pill use (never, past, current, unknown).

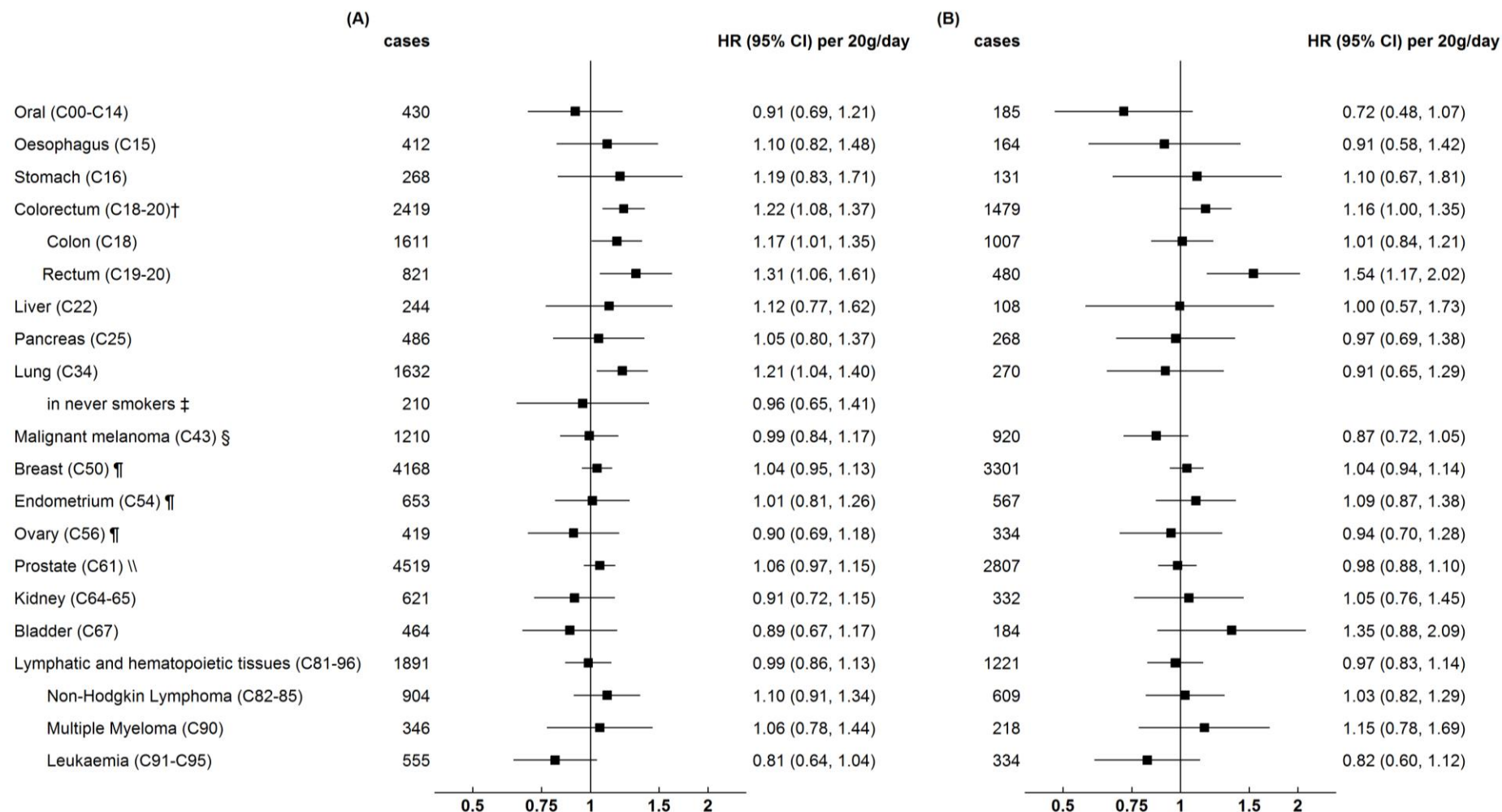
† In 13 (A) and 8 (B) cases of colorectal cancer (C18/20) colon (C18) and rectal cancer (C19-20) diagnoses coincided.

‡ Analyses restricted to never smokers (A: n = 252,965).

§ Additionally adjusted for skin colour (very fair, fair, light olive, dark olive, brown/black, unknown), hair colour (blonde, red, light brown, dark brown, black, other/unknown), skin reaction (get very tanned, moderately tanning, mildly/occasionally tanning, never tanning only burning, unknown), UV protection use (never/rarely, sometimes, most of the time, always, do not go out in the sunshine, unknown), sunburns before age 15 (never, ever, unknown), solarium use (never, >0-2 times/year, ≥3 times/year, unknown).

¶ Analyses restricted to women (A: n = 248,991; B: n = 150,793).

∥ Analyses restricted to men (A: n = 211,297; B: n = 105,572).



S4 Fig. Associations of processed meat intake and cancer incidence by cancer site (per 20g/day) when excluding first 2 years of follow-up (A, n = 464,736) and including only never smokers (B, n = 258,827)*

CI, Confidence interval; HR, Hazard ratio.

* Stratified for sex, age group (<45, 45-<50, 50-<55, 55-<60, 60-<65 and ≥65 years) and region (London, Wales, North-West, North-East, Yorkshire and Humber, West Midlands, East Midlands, South-East, South-West, Scotland) and adjusted for age (underlying time variable), ethnicity (4 groups where possible: White, Asian or Asian British, Black or Black British, Mixed race or other, unknown), deprivation (Townsend index quintiles, unknown), qualification (college or university degree/vocational qualification, national examination at ages 17-18, national examination at age 16, other/unknown), employment (in paid employment, receiving pension, not in paid employment, unknown), living with a spouse or partner (yes, no, unknown), height (sex-specific quintiles, unknown), smoking (never, former, current <15 cigarettes/day, current ≥15 cigarettes/day, current unknown amount of cigarettes/day, unknown), physical activity (<10 excess metabolic equivalents, 10-<50 excess metabolic equivalents, ≥50 excess metabolic

equivalents, unknown), alcohol intake (none, <1 g/day, 1-<10 g/day, 10-<20 g/day, ≥20 g/day, unknown), total fruit and vegetable intake (<3 servings/day, 3-<4 servings/day, 4-<6 servings/day, ≥6 servings/day, unknown), estimated cereal fibre intake (sex-specific quintiles, unknown), body mass index (sex-specific quintiles, unknown), in women: menopausal status (pre-, postmenopausal, unknown), parity (nulliparous, 1-2, ≥3, unknown), hormone-replacement therapy (never, past, current, unknown) and oral contraceptive pill use (never, past, current, unknown).

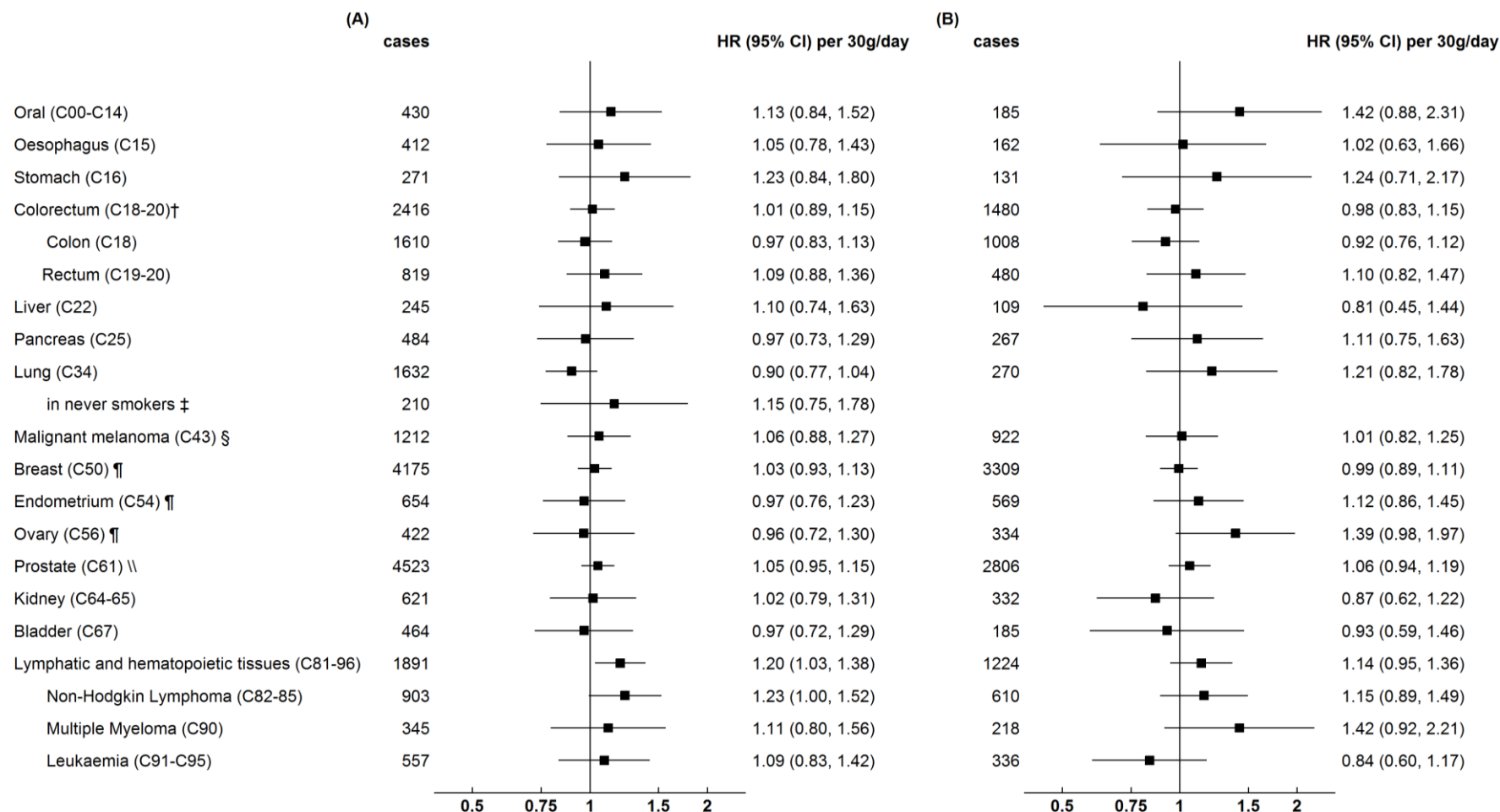
† In 13 (A) and 8 (B) cases of colorectal cancer (C18/20) colon (C18) and rectal cancer (C19-20) diagnoses coincided.

‡ Analyses restricted to never smokers (A: n = 255,227).

§ Additionally adjusted for skin colour (very fair, fair, light olive, dark olive, brown/black, unknown), hair colour (blonde, red, light brown, dark brown, black, other/unknown), skin reaction (get very tanned, moderately tanning, mildly/occasionally tanning, never tanning only burning, unknown), UV protection use (never/rarely, sometimes, most of the time, always, do not go out in the sunshine, unknown), sunburns before age 15 (never, ever, unknown), solarium use (never, >0-2 times/year, ≥3 times/year, unknown).

¶ Analyses restricted to women (A: n = 251,120; B: n = 152,058).

∥ Analyses restricted to men (A: n = 213,616; B: n = 106,769).



S5 Fig. Associations of poultry intake and cancer incidence by cancer site (per 30g/day) when excluding first 2 years of follow-up (A, n = 464,897) and including only never smokers (B, n = 259,040)*

CI, Confidence interval; HR, Hazard ratio.

* Stratified for sex, age group (<45, 45-<50, 50-<55, 55-<60, 60-<65 and ≥65 years) and region (London, Wales, North-West, North-East, Yorkshire and Humber, West Midlands, East Midlands, South-East, South-West, Scotland) and adjusted for age (underlying time variable), ethnicity (4 groups where possible: White, Asian or Asian British, Black or Black British, Mixed race or other, unknown), deprivation (Townsend index quintiles, unknown), qualification (college or university degree/vocational qualification, national examination at ages 17-18, national examination at age 16, other/unknown), employment (in paid employment, receiving pension, not in paid employment, unknown), living with a spouse or partner (yes, no, unknown), height (sex-specific quintiles, unknown), smoking (never, former, current <15 cigarettes/day, current ≥15 cigarettes/day, current unknown amount of cigarettes/day, unknown), physical activity (<10 excess metabolic equivalents, 10-<50 excess metabolic equivalents, ≥50 excess metabolic equivalents, unknown), alcohol intake (none, <1 g/day, 1-<10 g/day, 10-<20 g/day, ≥20 g/day, unknown), total fruit and vegetable intake (<3 servings/day, 3-<4 servings/day,

4-<6 servings/day, ≥6 servings/day, unknown), estimated cereal fibre intake (sex-specific quintiles, unknown), body mass index (sex-specific quintiles, unknown), in women: menopausal status (pre-, postmenopausal, unknown), parity (nulliparous, 1-2, ≥3, unknown), hormone-replacement therapy (never, past, current, unknown) and oral contraceptive pill use (never, past, current, unknown).

† In 13 (A) and 8 (B) cases of colorectal cancer (C18/20) colon (C18) and rectal cancer (C19-20) diagnoses coincided.

‡ Analyses restricted to never smokers (A: n = 255,431).

§ Additionally adjusted for skin colour (very fair, fair, light olive, dark olive, brown/black, unknown), hair colour (blonde, red, light brown, dark brown, black, other/unknown), skin reaction (get very tanned, moderately tanning, mildly/occasionally tanning, never tanning only burning, unknown), UV protection use (never/rarely, sometimes, most of the time, always, do not go out in the sunshine, unknown), sunburns before age 15 (never, ever, unknown), solarium use (never, >0-2 times/year, ≥3 times/year, unknown).

¶ Analyses restricted to women (A: n = 251,268; B: n = 152,209).

∥ Analyses restricted to men (A: n = 213,629; B: n = 106,831).