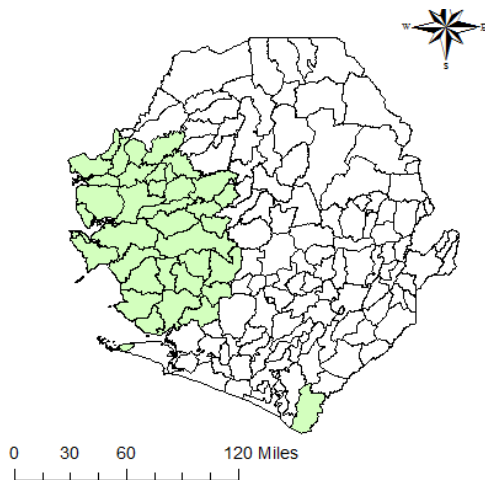
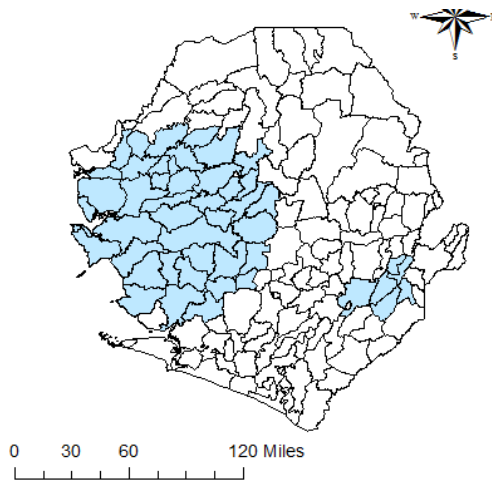


A. Cholera Clusters Jan 2012 – May 2013



B. Ebola Clusters May 2014-Sept 2015



C. Overlap

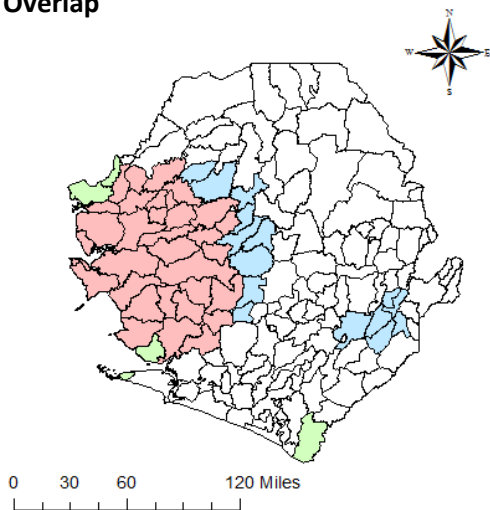
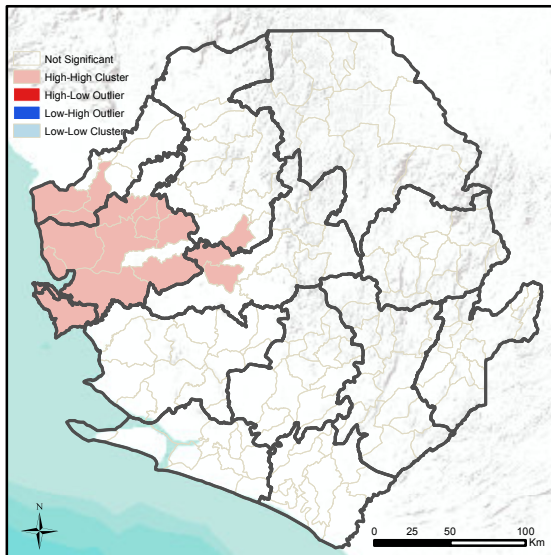


Figure S1. Results of SatScan space-time analysis for Cholera (A), Ebola (B) and overlap of space-time clusters (C)

A



B

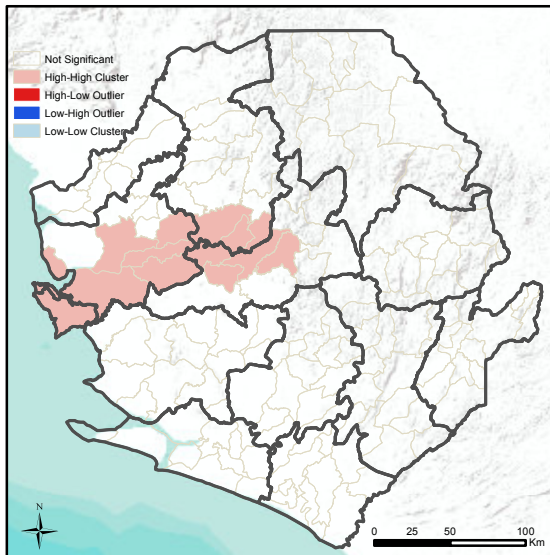
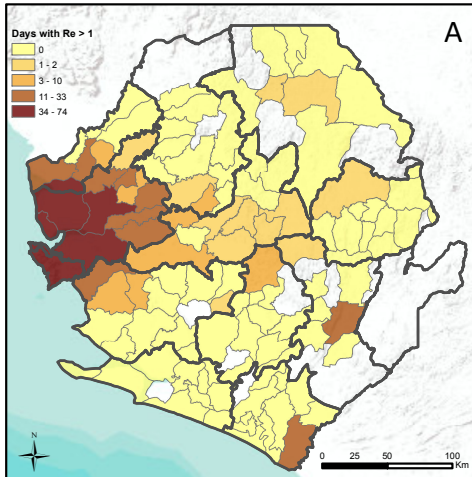


Figure S2. Local Moran's I Attack Rate Clustering for Cholera (A) and Ebola (B). Inverse distance squared neighborhood matrix used.

Cholera 2012-3



Ebola 2014-5

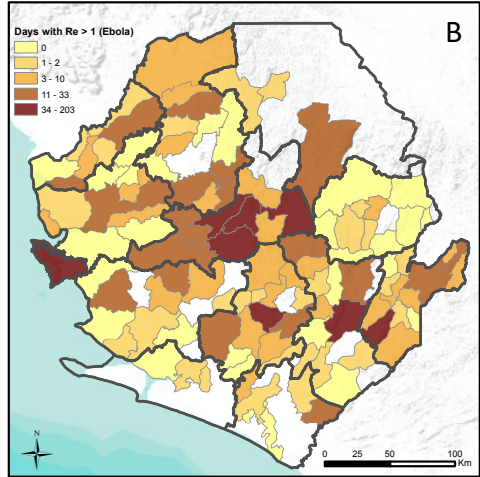


Figure S3. Estimated number of days with an effective reproductive number above unity for cholera (A) and Ebola (B) show darker regions sustaining more transmission.

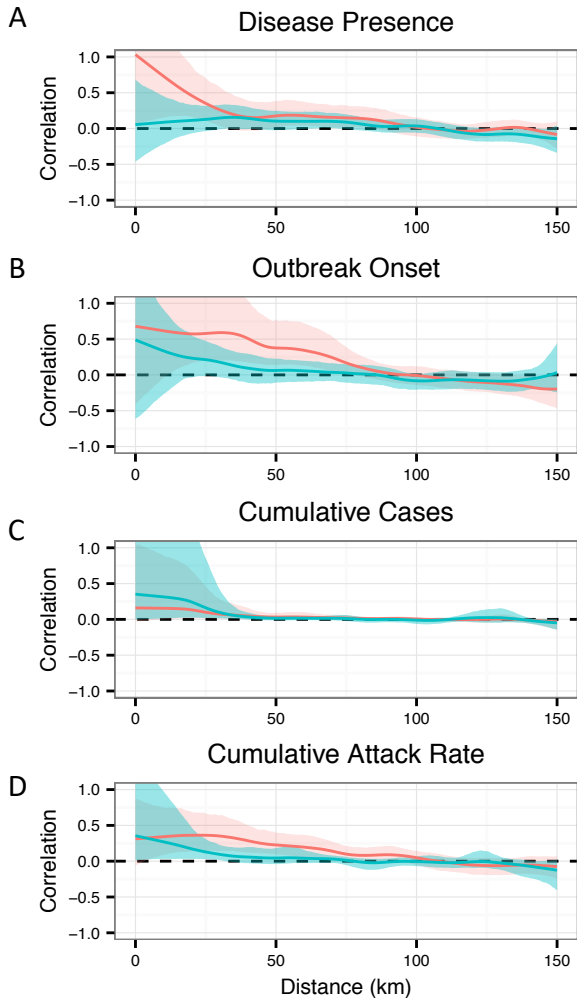


Figure S4. Spline correlograms showing tendency towards positive correlation between disease presence (A), outbreak onset date (B), cumulative cases (C), and cumulative attack rate (D) for both cholera (red) and Ebola (blue) as a function of distance between chiefdom pairs (x-axis). Shaded regions indicate 95% confidence intervals calculated for 1000 bootstrapped samples.

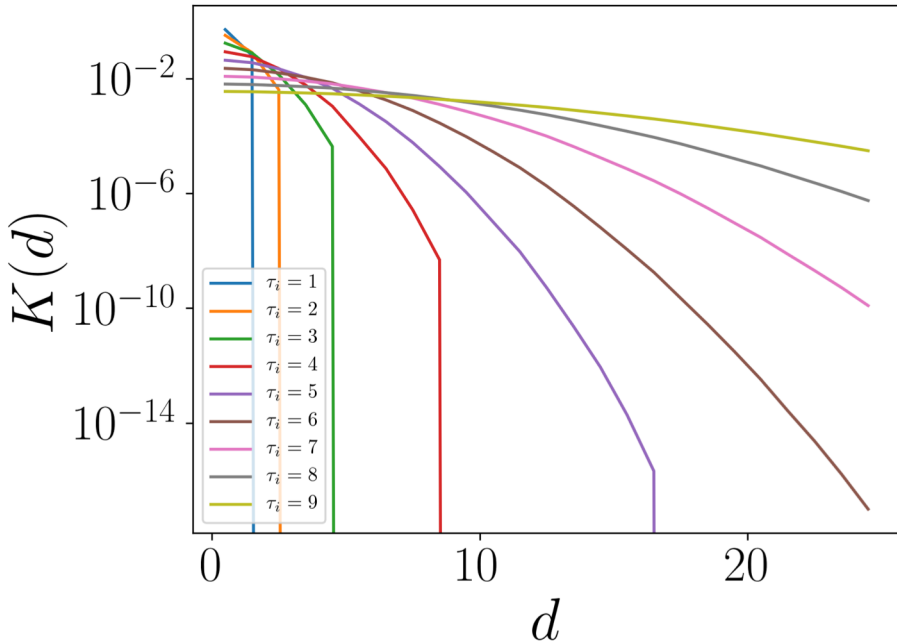
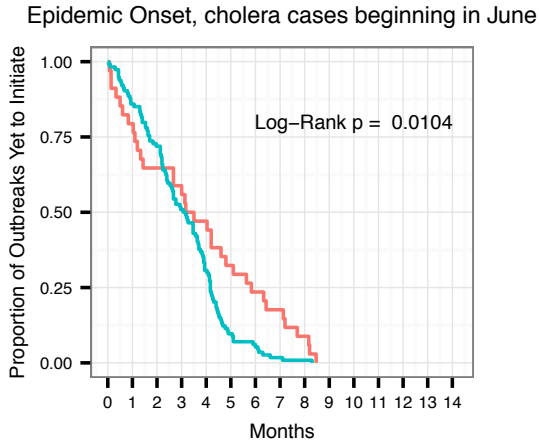


Figure S5. Dispersion kernel.

The dispersion kernel $K^*(d)$ is the probability that one an agent will end up at a position separated a distance d from the initial position after x days. For longer incubation periods (τ), the kernel is more homogeneously spread and has non-vanishing probabilities at greater distances, explaining the enhancement in sparking events for longer incubation periods. These simulations were conducted on a 50x50 lattice, with equal probability of left, right, up and down movement and 1/2 probability of not moving.

A



B

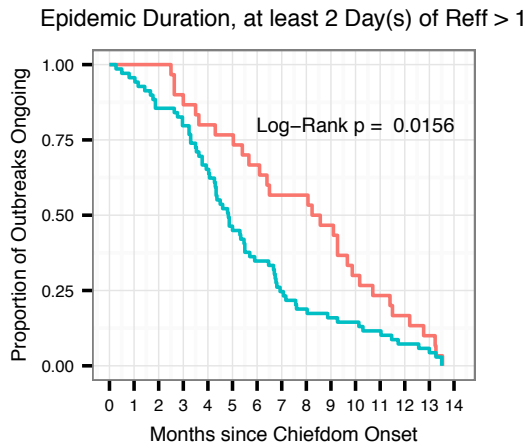


Figure S6. Survival curves for chiefdom outbreak onset (A) and outbreak duration (B) when considering a subset of cases of cholera (red) or Ebola (blue). Figure A excludes cholera cases before June. Figure B includes only chiefdoms with more than one day of $R_t > 1$.