

## **Supplementary Appendix**

Supplement to: Cohen AN, Kessel B. False positives in reverse transcription PCR testing for SARS-CoV-2

## Mathematical Derivation

Here we derive formulae for calculating the Test Prevalence Rate and the False Discovery Rate from the Test Positivity Rate, False Positive Rate and False Negative Rate.

Let:  $N$  = the number of samples tested,

$TPrR$  = the Test Prevalence Rate (the number of infected individuals that are tested divided by the number of individuals that are tested),

$TPoR$  = the Test Positivity Rate (the number of positive test results divided by the number of individuals that are tested),

$FPR$  = the False Positive Rate (the number of uninfected individuals that test positive divided by the number of uninfected individuals that are tested),

$FNR$  = the False Negative Rate (the number of infected individuals that test negative divided by the number of infected individuals that are tested),

$FDR$  = the False Discovery Rate (the number of false positive test results divided by the number of positive (true positive + false positive) test results),

with all rate functions limited to values between 0 and 1.

The number of infected individuals among those tested is  $TPrR \cdot N$ ; the number of these that test negative (false negatives) is  $FNR \cdot TPrR \cdot N$ , and the number that test positive (true positives) is  $(1 - FNR) \cdot TPrR \cdot N$ .

Also, the number of uninfected individuals is  $(1 - TPrR) \cdot N$  and the number of these that test positive (false positives) is  $FPR \cdot (1 - TPrR) \cdot N$ .

The total number of individuals that test positive is the sum of the true positives and the false positives =  $(1 - FNR) \cdot TPrR \cdot N + FPR \cdot (1 - TPrR) \cdot N$ .

Dividing this sum by  $N$  gives the Test Positivity Rate:

$$\begin{aligned} TPoR &= \frac{(1 - FNR)TPrR \cdot N + FPR(1 - TPrR)N}{N} \\ &= (1 - FNR)TPrR + FPR(1 - TPrR) \end{aligned} \quad \text{Eq. 1}$$

Rearranging equation 1 yields the Test Prevalence Rate:

$$TPrR = \frac{TPoR - FPR}{1 - FNR - FPR} \quad \text{Eq. 2}$$

Equation 2 yields negative values for  $TPrR$  when  $FPR > TPoR$ , and values  $> 1$  when  $FNR > 1 - TPoR$ . As such values are not allowed for rate functions,  $TPrR$  should be constrained to 0 when  $FPR > TPoR$  and to 1 when  $FNR > 1 - TPoR$ .

The False Discovery Rate (the false positives divided by the total positives) is:

$$\begin{aligned} FDR &= \frac{FPR(1 - TPrR)N}{(1 - FNR)TPrR \cdot N + FPR(1 - TPrR)N} \\ &= \frac{FPR(1 - TPrR)}{(1 - FNR)TPrR + FPR(1 - TPrR)} \end{aligned}$$

Substituting in  $TPoR$  from equation 1,

$$FDR = \frac{FPR(1-TPrR)}{TPoR}$$

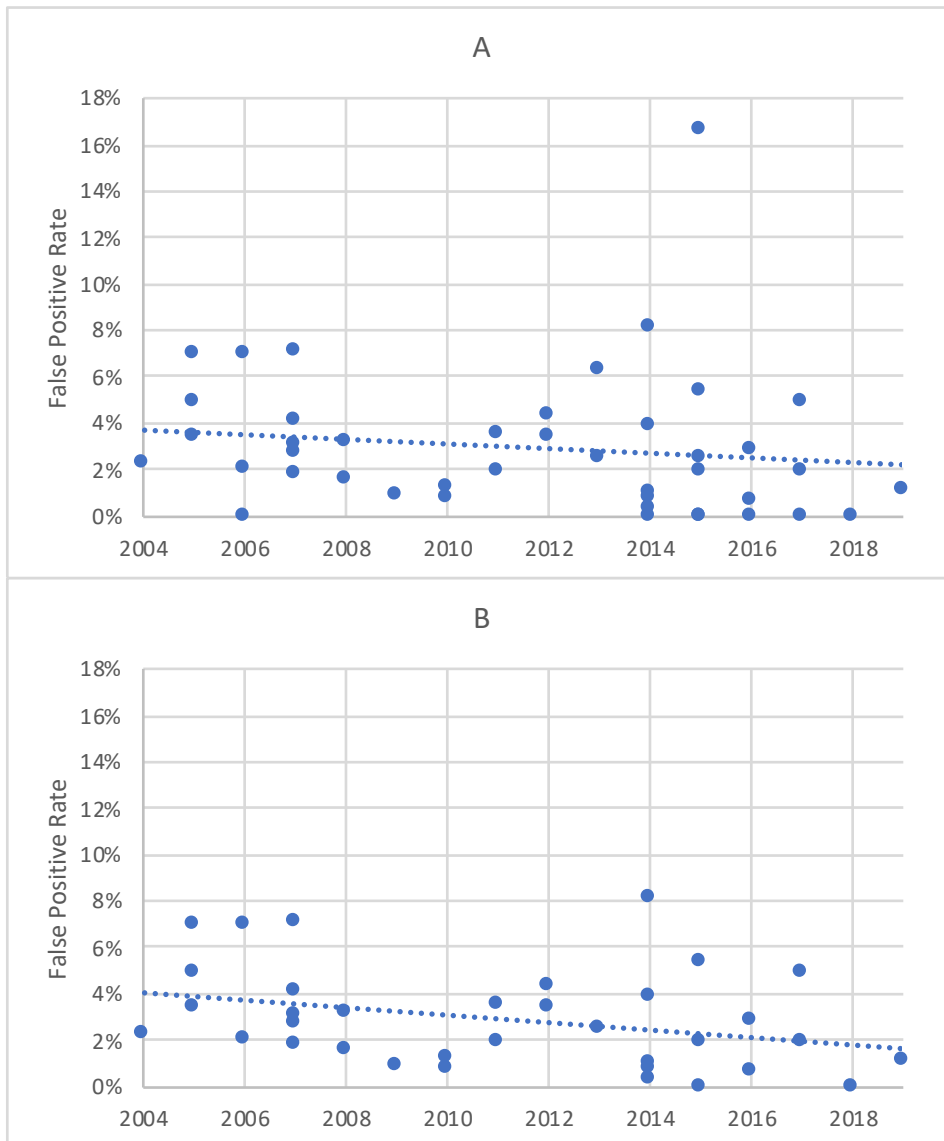
The substituting for  $TPrR$  from equation 2 and rearranging yields:

$$FDR = \frac{FPR \cdot TPoR + FNR \cdot FPR - FPR}{FNR \cdot TPoR + FPR \cdot TPoR - TPoR} \quad \text{Eq. 3}$$

## Review of data from the external quality assessments

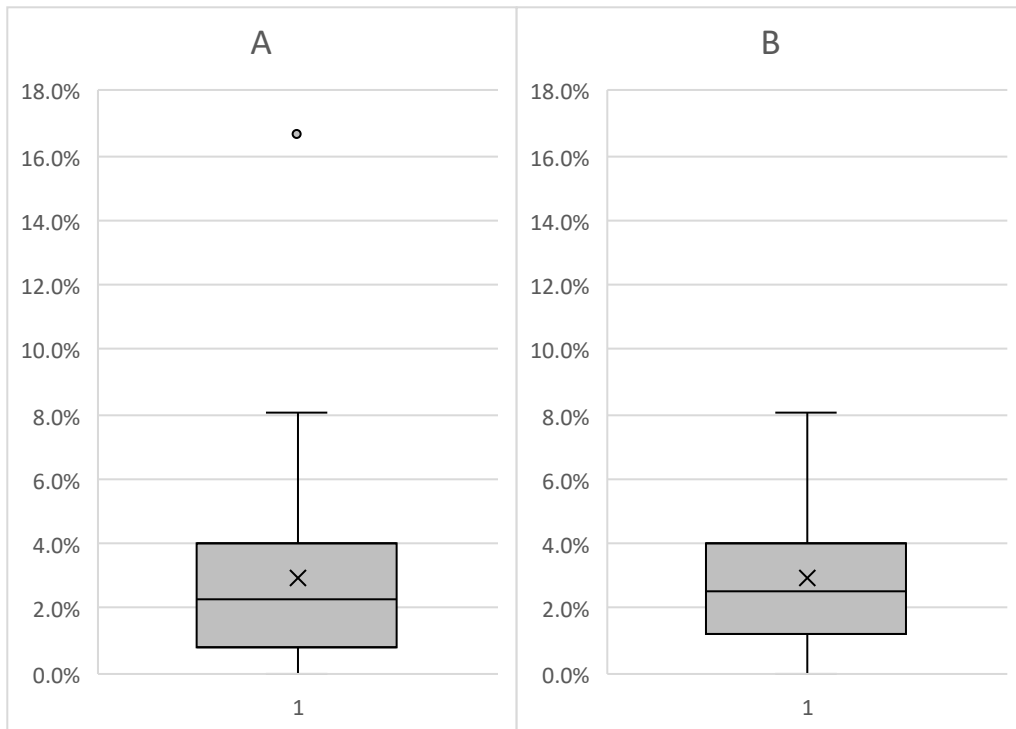
Between three and 174 laboratories participated in each external quality assessment (EQA). For each EQA, we calculated its false positive rate (FPR) as the total number of negative samples reported as positive from all the participating laboratories divided by the total number of negative samples assayed by those laboratories. We considered both the full set of 43 EQAs and a subset of 37 EQAs that analyzed more than 100 negative samples each. For the full set there was no correlation between FPR and Year over 2004-2019 ( $n=43$ ,  $r=0.147$ ,  $p=0.346$ ); for the subset there was a weak downward correlation ( $n=37$ ,  $r=0.327$ ,  $p=0.056$ ) (Supplementary Figure 1). The median and interquartile range were slightly lower for the full set (median = 2.3%, interquartile range = 0.8% to 4.0%) than for the subset (median = 2.1%, interquartile range = 1.2% to 4.0%) (Supplementary Figure 2 ). We used the full set's median and interquartile range to analyze the effects of false positives.

**Supplementary Figure 1. False positive rates over time for external quality assessments.**



A) Full data set, B) subset of the data, comprising EQAs with >100 negative samples.

**Supplementary Figure 2. False positive rates for external quality assessments.**



A) Full data set, B) subset of the data, comprising EQAs with >100 negative samples.

## Estimates of false negative rates (FNR) in SARS-CoV-2 RT-PCR testing

Supplementary Table 1 lists FNRs for SARS-CoV-2 RT-PCR testing either reported by studies or indicated by the data in the study (and often cited by later studies as evidence of the FNR). We excluded studies with less than 20 infected patients. Ai et al. 2020, Fang et al. 2020 and Xie et al. 2020 appear to be the most commonly cited references regarding the FNR in SARS-CoV-2 RT-PCR testing. Li et al. 2020 reported a false negative rate of 20%, based on 2 of 10 patients that initially tested negative by RT-PCR testing positive within 11 days; however, this calculation produces the false omission rate, not the false negative rate.

**Supplementary Table 1. Estimates of false negative rates.**

Study	Results	Estimated false negative rate
Liu et al. 2020	Reported 100% sensitivity in 24 infected patients, with diagnosis apparently based on clinical observations.	0%
Xie et al. 2020	5 of 167 infected patients initially tested negative by RT-PCR positive chest CT, and tested positive 2-8 days later.	3.0%
Luo et al. 2020	Throat swabs were tested 6 times in 128 patients every 2 days, all of whom were positive on the 6th test. Taking the results of the 6th test as the standard, 36 (28%) were negative on the first swab, but this declined with each of 6 tests. The average over the first five tests was 11 negative.	8.6%-28.1%
Wong et al. 2020	6 of 64 infected patients initially tested negative by RT-PCR.	9.4%
Kim et al. 2020	In a meta-analysis of SARS-CoV-2 RT-PCR tests, the pooled false negative rate was 11%.	11%
Bernheim et al. 2020	12 of 102 infected patients initially tested negative by RT-PCR.	11.8%
Long et al. 2020	6 of 36 infected patients initially tested negative by RT-PCR.	16.7%
He et al. 2020	7 of 34 infected patients initially tested negative by RT-PCR.	20.6%
Ren et al. 2020	19 of 87 infected patients initially tested negative by RT-PCR.	21.8%
Yang Y et al 2020	51 of 219 nasal swab samples from 213 patients confirmed by the Guangdong CDC as infected, taken 0-7 days after the onset of symptoms, were negative by RT-PCR.	23.3%
Fang et al. 2020	15 of 51 infected patients tested negative 0-6 days after symptom onset.	29.4%
Yang H et al. 2020	Reported that the 5th edition of China's COVID-19 prevention and control guidelines state that the real-time RT=PCR test for SARS-CoV-2 has a false negative rate of at least 30%.	30%
Kucirka et al. 2020	Estimated a 39% false negative rate on the day of symptom onset.	39%
Yu et al. 2020	11 of 28 patients diagnosed as infected by the criteria of China's National Health Commission tested negative by RT-PCR.	39.3%
Ai et al. 2020	413 of 1,014 infected patients initially tested negative by RT-PCR.	40.7%

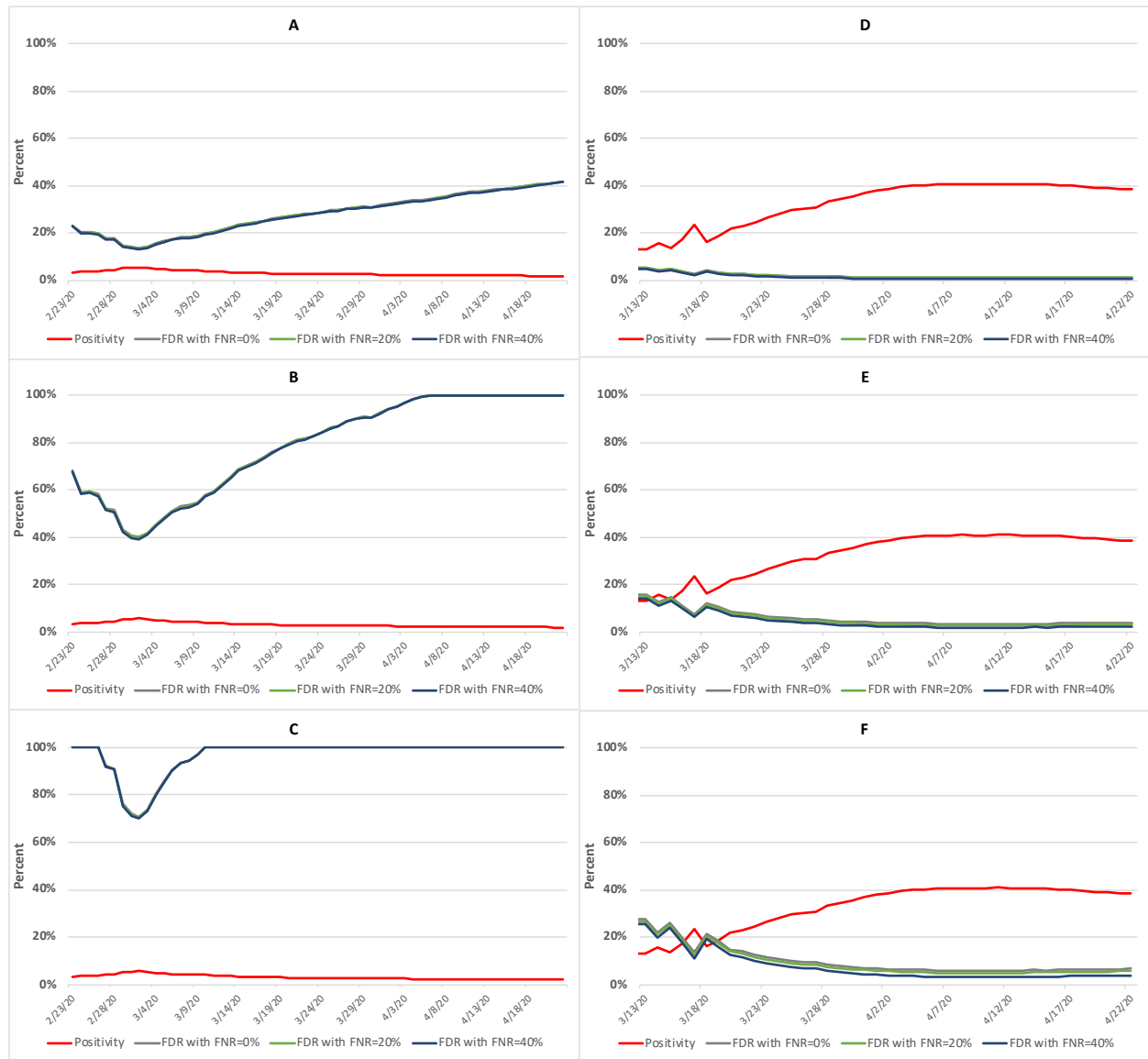
## References

- Ai T, Yang Z, Hou H, et al. Correlation of Chest CT and RT-PCR Testing in Coronavirus Disease 2019 (COVID-19) in China: A Report of 1014 Cases. *Radiology* 2020; DOI: 10.1148/radiol.2020200642.
- Bernheim A, Mei X, Huang M, et al. Chest CT findings in coronavirus disease-19 (COVID-19): relationship to duration of infection. *Radiol* 2020; published online Feb 20, 2020. DOI: <https://doi.org/10.1148/radiol.2020200463>.
- Fang Y, Zhang H, Xie J, et al. Sensitivity of Chest CT for COVID-19: Comparison to RT-PCR. *Radiology* 2020; DOI: 10.1148/radiol.2020200432.
- He J-L, Luo L, Luo Z-D, et al. Diagnostic performance between CT and initial real-time RT-PCR for clinically suspected 2019 coronavirus disease (COVID-19) patients outside Wuhan, China. *Respiratory Medicine* (2020). <https://doi.org/10.1016/j.rmed.2020.105980> (accessed Apr 24, 2020).
- Kim H, Hong H, Yoon SH. Diagnostic performance of CT and reverse transcriptase-polymerase chain reaction for Coronavirus Disease 2019: a meta-analysis. *Radiol* 2020; published online Apr 17, 2020. DOI: 10.1148/radiol.2020201343.
- Kucirka L, Lauer S, Laeyendecker O, Boon D, Lessler J. Variation in false negative rate of RT-PCR based SARS-CoV-2 tests by time since exposure. *medRxiv* 2020; DOI: 10.1101/2020.04.07.20051474.
- Li D, Wang D, Dong J, et al. False-negative results of real-time reverse-transcriptase polymerase chain reaction for severe acute respiratory syndrome coronavirus 2: role of deep-learning-based CT diagnosis and insights from two cases. *Korean J Radiol* 2020; **21**: 505-8.
- Liu L, Zhang D, Tang S, et al. The epidemiological and clinical characteristics of 2019 novel coronavirus infection in Changsha, China. Available at SSRN: <https://ssrn.com/abstract=3537093> (accessed on Apr 24, 2020).
- Long C, Xu H, Shen Q, Zhang X, Fan B, Wang C, Zeng B, Li Z, Li X, Li H. Diagnosis of the Coronavirus disease (COVID-19): rRT-PCR or CT? *Eur J Radiol* 2020; DOI: 10.1016/j.ejrad.2020.108961.
- Luo L, Liu D, Liao X-L, et al. Modes of contact and risk of transmission in COVID-19 among close contacts. *medRxiv* 2020; DOI: 10.1101/2020.03.24.20042606.
- Ren X, Liu Y, Chen H, et al. Application and Optimization of RT-PCR in Diagnosis of SARS-CoV-2 Infection. *medRxiv* 2020. <https://doi.org/10.1101/2020.02.25.20027755> (accessed Apr 24, 2020).
- Wong HY, Lam HY, Fong AH, et al. Frequency and distribution of chest radiographic findings in COVID-19 positive patients. *Radiol* 2020; published online Mar 27, 2020. DOI: 10.1148/radiol.2020201160.
- Xie X, Zhong Z, Zhao W, Zheng C, Wang F, Liu J. Chest CT for Typical 2019-nCoV Pneumonia: Relationship to Negative RT-PCR Testing. *Radiology* 2020; DOI: 10.1148/radiol.2020200343.
- Yang H, Wang C, Poon LC. Novel coronavirus infection and pregnancy. *Ultrasound Obstet Gynecol* 2020; **55**: 435.
- Yang Y, Yang M, Shen C, et al. Evaluating the accuracy of different respiratory specimens in the laboratory diagnosis and monitoring the viral shedding of 2019-nCoV infections. *medRxiv* 2020; DOI: 10.1101/2020.02.11.20021493.
- Yu H, Li D, Deng Z, et al. Total protein as a biomarker for predicting coronavirus disease-2019 pneumonia. Available at SSRN: <https://ssrn.com/abstract=3551289> (accessed on Apr 24, 2020).

## Sensitivity analysis for false negative rates of 0-40%.

For SARS-CoV-2 test data for South Korea from Feb 23, 2020 to Apr 22, 2020 and New York State from Mar 13 2020 to Apr 22, 2020, at false positive rates of 0.8%, 2.3%, and 4.0%, varying the false negative rates between 0%, 20%, and 40% causes little change in the calculated false discovery rates (Supplementary Figure 3).

**Supplementary Figure 3. Test positivity and calculated false discovery rates in South Korea and New York State SARS-CoV-2 test data over a range of false positive and false negative rates.**



Test positivity (Positivity) and false discovery rates (FDR) at the indicated false negative rates (FNR) for South Korea (A, B, C) and New York State (D, E, F) with false positive rates of 0.8% (A, D), 2.3% (B, E) and 4.0% (C, F).



## External quality assessments included in the meta-analysis (see Table 1)

- Caliendo AM, Valsamakis A, Zhou Y, et al. Multilaboratory comparison of Hepatitis C Virus viral load assays. *J Clin Microbiol* 2006; **44**: 1726–32.
- Charrel R, Mögling R, Pas S, et al. Variable sensitivity in molecular detection of Zika Virus in European expert laboratories: external quality assessment, November 2016. *J Clin Microbiol* 2017; **55**: 3219–26.
- Drosten C, Doerr HW, Lim W, Stöhr K, Niedrig M. SARS molecular detection external quality assurance. *Emerg Infect Dis* 2004; **10**: 2200–3.
- Ellerbrok H, Jacobsen S, Patel P, et al. External quality assessment study for ebolavirus PCR-diagnostic promotes international preparedness during the 2014–2016 Ebola outbreak in West Africa. *PLoS Negl Trop Dis* 2017; **11**: e0005570.
- Escadafal C, Paweska JT, Grobbelaar A, et al. International external quality assessment of molecular detection of Rift Valley Fever Virus. *PLoS Negl Trop Dis* 2013; **7**: e2244.
- Jacobsen S, Patel P, Schmidt-Chanasit J, et al. External quality assessment studies for laboratory performance of molecular and serological diagnosis of Chikungunya Virus infection. *J Clin Virol* 2016; **76**: 55–65.
- Laperche S, Bouchardeau F, Thibault V, et al. Multicenter trials need to use the same assay for hepatitis C virus viral load determination. *J Clin Microbiol* 2007; **45**: 3788–90.
- Lau KA, Theis T, Gray J, Rawlinson WD. Ebola preparedness: diagnosis improvement using rapid approaches for proficiency testing. *J Clin Microbiol* 2017; **55**: 783–90.
- Le Gal F, Brichtler S, Sahli R, Chevret S, Gordien E. First international external quality assessment for Hepatitis Delta Virus RNA quantification in plasma. *Hepatology* 2016; **64**: 1483–94.
- Panning M, Charrel RN, Mantke OD, Landt O, Niedrig M, Drosten C. Coordinated implementation of Chikungunya virus reverse transcription–PCR. *Emerg Infect Dis* 2009; **15**: 469–71.
- Pas SD, Patel P, Reusken C, et al. First international external quality assessment of molecular diagnostics for MERS-CoV. *J Clin Virol* **69**: 81–85.
- Pok KY, Squires RC, Tan LK, et al. First round of external quality assessment of dengue diagnostics in the WHO Western Pacific Region, 2013. *Western Pac Surveill Response J* 2015; **6**: 73–81.
- Reusken C, Baronti C, Mögling R, Papa A, Leitmeyer K, Charrel RN. Toscana, West Nile, Usutu and tick-borne encephalitis viruses: external quality assessment for molecular detection of emerging neurotropic viruses in Europe, 2017. *Euro Surveill* 2019; **24**(50). DOI: 10.2807/1560-7917.ES.2019.24.50.1900051.
- Soh LT, Squires RC, Tan LK, et al. External quality assessment of dengue and chikungunya diagnostics in the Asia Pacific region, 2015. *Western Pac Surveill Response J* 2016; **7**: 26–34.
- Tvorogova MG, Chulanov VP, Volkova RA, et al. [Quality assessment of HCV RNA detection by PCR method in Federal System of External Quality Assessment in 2005-2007]. *J Microbiol Epidemiol Immunobiol* 2009; **2009**: 59–62.
- Wang G, Sun Y, Zhang K, et al. External quality assessment of molecular detection of Ebola Virus in China. *PLoS One* 2015; **10**: e0132659.
- World Health Organization. Detection of influenza virus subtype A by polymerase chain reaction: WHO external quality assessment project summary analysis, 2011. *Wkly Epidemiol Rec* 2012; **87**(3): 29–36.
- World Health Organization. Detection of influenza virus subtype A by polymerase chain reaction: WHO external quality assessment programme summary analysis, 2012. *Wkly Epidemiol Rec* 2013; **88**(4): 37–48.
- World Health Organization. Detection of influenza virus subtype A by polymerase chain reaction: WHO external quality assessment programme summary analysis, 2013. *Wkly Epidemiol Rec* 2014; **89**(4/5): 37–44.
- World Health Organization. Detection of influenza virus subtype A by polymerase chain reaction: WHO external quality assessment programme summary analysis, 2014. *Wkly Epidemiol Rec* 2015; **90**(3): 9–16.

- World Health Organization. Detection of influenza virus subtype A by polymerase chain reaction: WHO external quality assessment programme summary analysis, 2015. *Wkly Epidemiol Rec* 2016; **90**(3): 3–11.
- World Health Organization. Detection of influenza virus subtype A by polymerase chain reaction: WHO external quality assessment programme summary analysis, 2016. *Wkly Epidemiol Rec* 2017; **92**(4): 37–44.
- World Health Organization. Detection of influenza viruses by reverse transcription polymerase chain reaction: WHO external quality assessment programme summary analysis, 2017. *Wkly Epidemiol Rec* 2018; **93**(2): 9–16.
- World Health Organization. Detection of influenza viruses by reverse transcription polymerase chain reaction: WHO external quality assessment programme summary analysis, 2017. *Wkly Epidemiol Rec* 2019; **94**(5): 53–64.
- World Health Organization. Detection of influenza viruses by reverse transcription polymerase chain reaction: WHO external quality assessment programme summary analysis, 2019. *Wkly Epidemiol Rec* 2010; **95**(6): 49–60.
- World Health Organization. WHO external quality assessment for detecting influenza A virus using polymerase chain reaction—summary, 2010. *Wkly Epidemiol Rec* 2011; **86**(3): 17–24.
- World Health Organization. WHO external quality assessment project for the detection of subtype influenza A viruses by polymerase chain reaction—summary analysis, 2007 and 2008. *Wkly Epidemiol Rec* 2008; **83**: 401–12.
- World Health Organization. WHO external quality assessment project for detecting influenza virus subtype A by polymerase chain reaction—summary analysis, 2009. *Wkly Epidemiol Rec* 2009; **84**(48): 493–504.
- Zhang D, Sun Y, Jia T, et al. External quality assessment for the detection of measles virus by reverse transcription-PCR using armored RNA. *Plos One* 2015; **10**(8).
- Zhang L, Hao M, Zhang K, Z *et al* (2016). External quality assessment for the molecular detection of MERS-CoV in China. *J Clin Virol* 2016; **75**: 5–9.
- Zhou D, Luo J. Construction of Lentivirus-based reference material for RT-PCR detection of Middle East Respiratory Syndrome Coronavirus and Its application in external quality assessment. *Adv Microbiol* 2018; **8**: 506–18.

## **Research in Context**

### **Evidence before this study**

We searched Google Scholar for studies published in any language from Jan 1, 2020 to April 25, 2020 using the terms "SARS-CoV-2", "COVID-19" "Coronavirus" or "nCoV"; "false positive" or "specificity"; and "PCR". We found 30 papers that mentioned false positives or specificity in the context of SARS-CoV-2 testing, including one retracted study. Twenty-five made only brief or incidental mention of false positives or specificity. One study reported high false positive rates in primer-probe sets used in some SARS-CoV-2 assays. Four studies assumed or roughly estimated false positive rates as inputs to models, including two pooled-sampling optimization models and two models used to demonstrate the effects of false positives on certain epidemiological statistics. To our knowledge, no study has employed a meta-analysis of external quality assessments to estimate false positive rates in PCR-based diagnostic tests, applied false positive rates to SARS-CoV-2 RT-PCR test data, included false positive rates in estimates of population prevalence or asymptomatic ratios based on SARS-CoV-2 RT-PCR test data, or estimated the reliability of SARS-CoV-2 test results in light of the potential for high false discovery rates. This study was motivated by the lead author's finding high false positive rates in a previous, unpublished review of external quality assessments of PCR-based diagnostic methods, undertaken with regard to PCR-based detection monitoring of non-native mussels. Since even small false positive rates can have large impacts on test statistics when prevalence is low, we aimed to investigate the false positive rates in relevant external quality assessments, the effect of such rates on SARS-CoV-2 test statistics, and the implications for case management, epidemiological statistics, and public health decision-making and communications.

### **Added value of this study**

A meta-analysis of external quality assessments revealed false positive rates of 0-16.7% in RT-PCR assays of RNA viruses. A conservative range of rates derived from those data is shown to have large impacts on test statistics and analyses based on them.

### **Implications of all the available evidence**

Contrary to common perceptions, positive results from SARS-CoV-2 RT-PCR tests can be highly unreliable. This has consequences for clinical decisions and case management. The potential for large numbers of false positives when prevalence is low raises questions about mass testing. Analyses of SARS-CoV-2 should include values for false positive and false negative rates. Actions to reduce false positives and mitigate their effects should be considered.