

## **Supplementary material**

### **Suppression of COVID-19 outbreak in the municipality of Vo', Italy**

Enrico Lavezzo, Elisa Franchin, Constanze Ciavarella, Gina Cuomo-Dannenburg, Luisa Barzon, Claudia Del Vecchio, Lucia Rossi, Riccardo Manganelli, Arianna Loregian, Nicolò Navarin, Davide Abate, Manuela Sciro, Stefano Merigliano, Ettore Decanale, Maria Cristina Vanuzzo, Francesca Saluzzo, Francesco Onelia, Monia Pacenti, Saverio Parisi, Giovanni Carretta, Daniele Donato, Luciano Flor, Silvia Cocchio, Giulia Masi, Alessandro Sperduti, Lorenzo Cattarino, Renato Salvador, Katy A. M. Gaythorpe, Alessandra R. Brazzale, Stefano Toppo, Marta Trevisan, Vincenzo Baldo, Imperial College COVID-19 Response Team, Christl A. Donnelly, Neil M. Ferguson, Ilaria Dorigatti and Andrea Crisanti

## Supplementary Tables

**Table S1** Age distribution of Vo' residents and number of tested subjects at the two time-points across different age groups.

Age group	resident subjects	first survey		second survey	
		n.	(%)	n.	(%)
00-10	231	190	82,3	131	56,7
11-20	262	235	89,7	199	76,0
21-30	308	247	80,2	200	64,9
31-40	336	279	83,0	232	69,0
41-50	466	415	89,1	345	74,0
51-60	550	504	91,6	449	81,6
61-70	434	391	90,1	353	81,3
71-80	369	325	88,1	267	72,4
80+	319	226	70,8	167	52,4
total	3275	2812	85,9	2343	71,5

**Table S2** Age distribution of symptomatic and asymptomatic individuals at first and second survey.

Age group	Positive at first survey				Positive at second survey*			
	Symptomatic^	(%)	Asymptomatic^	(%)	Symptomatic	(%)	Asymptomatic	(%)
00-09	-	(-)	-	(-)	-	(-)	-	(-)
10-20	2	(8.3)	1 (1)	(0.4)	1	(4.5)	-	(-)
21-30	3 (1)	(23.1)	1 (1)	(0.4)	2	(20.0)	-	(-)
31-40	3	(13.6)	4	(1.5)	-	(-)	2	(0.9)
41-50	3	(10.7)	2 (1)	(0.5)	1	(3.6)	-	(-)
51-60	9	(29.0)	7 (1)	(1.5)	3	(11.5)	2	(0.5)
61-70	8	(50.0)	7	(1.9)	2	(13.3)	2	(0.6)
71-80	12 (1)	(54.5)	7 (1)	(2.4)	2	(13.3)	2	(0.8)
81+	3	(37.5)	1 (1)	(0.6)	2	(25.0)	-	(-)
Total	43	(22.4)	30	(1.1)	13	(8.2)	8	(0.4)

^ subjects not available at second survey are reported within parentheses

\*without new cases

**Table S3.** SARS-Cov-2 negative children living in households with infected relatives.

	first survey	second survey
n (age group 0-10)	217	157
with positive cohabitant*	10	3
with positive relative not cohabitant <sup>§</sup>	2	0

\*5 subjects are resident outside Vo', not included in the released dataset.

<sup>§</sup>both subjects are resident outside Vo', not included in the released dataset.

**Table S4.** Frequency of comorbidities in symptomatic and asymptomatic SARS-Cov-2 infected individuals\*

Comorbidity* <sup>^</sup>	symptomatic		asymptomatic		p
	present	absent	present	absent	
Diabetes mellitus	2	26	2	9	0.56
Dyslipidemia	2	26	1	10	1
Hyperuricemia	2	26	0	11	1
Hypertension	14	14	5	6	1
Cardiological disease	2	26	2	9	0.56
Vascular disease	0	28	0	11	--
Allergies	2	26	3	8	0.12
Respiratory disease	4	24	1	10	1
Gastroenterological disease	1	27	0	11	1
Cancers	3	25	1	10	1
Autoimmune disease	2	26	0	11	1
Thyroid disease	4	24	0	11	0.31
Others	4	24	1	10	1

*p*-value obtained from Fisher's exact test for proportions.

\*comorbidity history was collected in 39 symptomatic subjects and 11 asymptomatic subjects

<sup>^</sup>Some individuals had more than one conditions

**Table S5. Percentage of symptomatic and asymptomatic SARS-Cov-2 infected individuals per medication type\***

Medication	symptomatic		asymptomatic		p
	present	absent	present	absent	
ACE inhibitors	7	21	1	10	0.40
Angiotensin II receptor blockers (ARBs)	4	24	2	9	1
Nonsteroidal Anti-inflammatory Drugs (NSAIDs)	1	27	0	11	1
Antihypertensive	13	15	3	8	0.47
Diuretics	3	25	1	10	1
Anticoagulants	1	27	1	10	0.49
Antiplatelet	2	26	1	10	1
Hypoglycemic	2	26	1	10	1
Thyroid hormones	5	23	0	11	0.30
Other hormones	0	28	1	10	0.28
Immunosuppressants	2	26	0	11	1
Corticosteroids	2	26	0	11	1
Inhaled drugs	1	27	1	10	0.49
Proton pump inhibitors (PPI)	1	27	1	10	0.49
Statins	4	24	1	10	1
Allopurinol	2	26	0	11	1
Other	5	23	1	10	0.66

*p-value obtained from Fisher's exact test for proportions.*

*\*comorbidity history was collected in 38 symptomatic subjects and 11 asymptomatic subjects.*

**Table S6. Subjects in a family cluster, with the corresponding anonymous ID.**

Patient	ID
A	FxZZNIJK
B	uhaqSrJj
C	VLRlycjD
D	kBnjzTDk
E	hswRareX
F	Not included in the dataset (not resident in Vo')
G	ChOIOFXm
H	cbyQPPfZ

**Table S7. Results of the second survey for subjects living with SARS-Cov-2 infected relatives in the same household.**

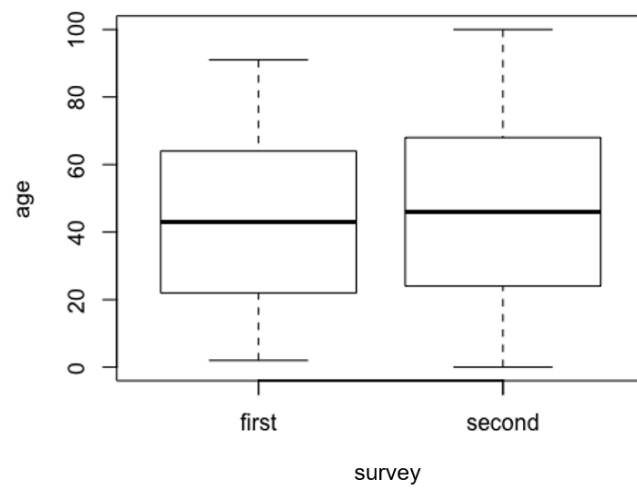
		Second survey			
		New cases		negative	
		n.	(%)	n.	(%)
Subjects with infected relative in the same household	Yes	6	(75.0)	78	(3.4)
	No	2	(25.0)	2197	(96.6)
total		8		2275	

**Table S8. Mean and 95% credible interval (CrI) of the parameter estimates obtained with MCMC from the fit of the dynamical transmission model described in Figure S10 to the observed prevalence of symptomatic and asymptomatic SARS-CoV-2 infections in the first and secondsurveys.**

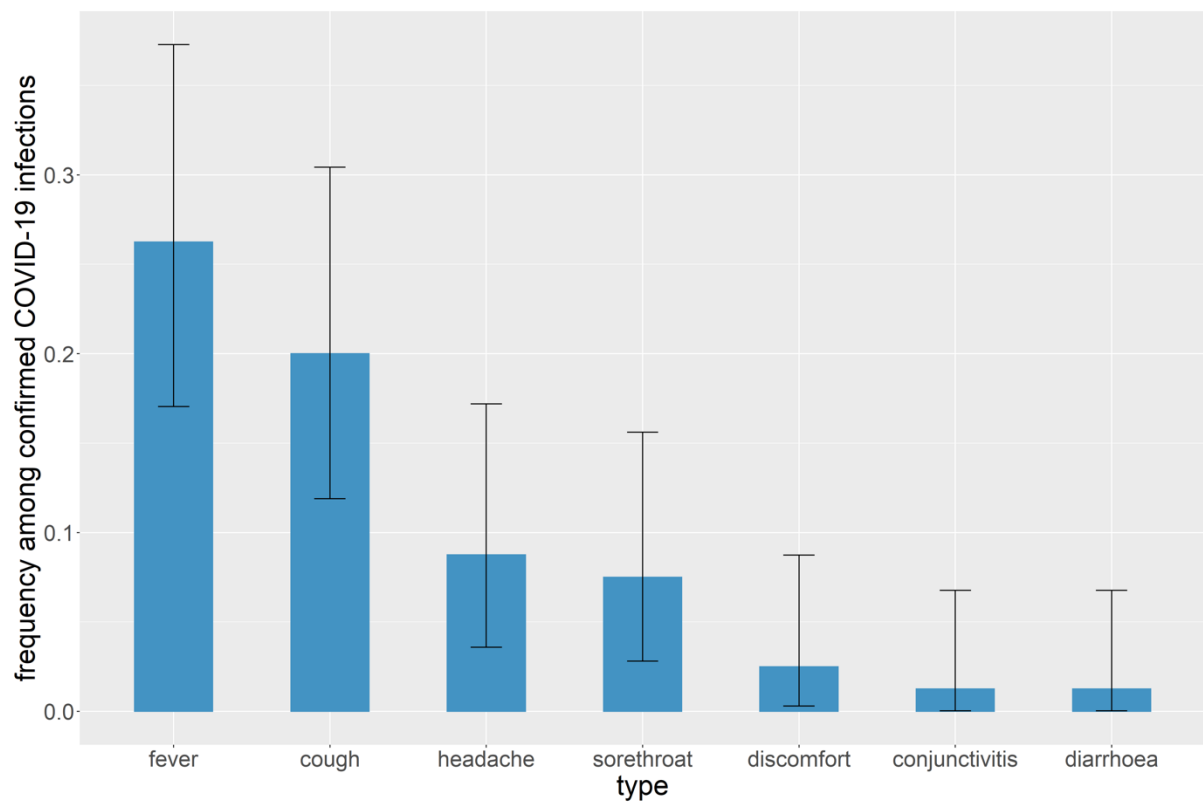
$R_0^1$ (fixed)	$1/\sigma$ (fixed)	seeds	p	1-w	DIC
2.1	2	11.02 (8.26, 14.18)	0.42 (0.33, 0.51)	0.89 (0.71, 1)	26.8
2.1	4	7.66 (6.09, 9.47)	0.42 (0.32, 0.51)	0.97 (0.84, 1)	24.4
2.1	6	5.94 (4.81, 7.33)	0.42 (0.32, 0.52)	0.98 (0.9, 1)	25.7
2.1	8	5.02 (4.03, 6.11)	0.42 (0.32, 0.51)	0.98 (0.91, 1)	27.9
2.1	10	4.43 (3.55, 5.37)	0.42 (0.33, 0.52)	0.98 (0.92, 1)	30.7
2.1	12	4.02 (3.19, 4.83)	0.42 (0.33, 0.52)	0.99 (0.93, 1)	32.6
2.4	2	5.7 (4.32, 7.29)	0.42 (0.33, 0.5)	0.91 (0.76, 1)	26.3
2.4	4	4.03 (3.22, 4.95)	0.41 (0.32, 0.51)	0.98 (0.88, 1)	24.5
2.4	6	3.18 (2.58, 3.87)	0.42 (0.33, 0.51)	0.98 (0.92, 1)	26.0
2.4	8	2.72 (2.15, 3.32)	0.41 (0.32, 0.51)	0.99 (0.93, 1)	29.3
2.4	10	2.44 (1.99, 2.95)	0.42 (0.33, 0.51)	0.99 (0.94, 1)	31.9
2.4	12	2.23 (1.78, 2.73)	0.42 (0.33, 0.51)	0.99 (0.94, 1)	34.5
2.7	2	3.09 (2.39, 3.92)	0.41 (0.32, 0.51)	0.93 (0.79, 1)	26.5
2.7	4	2.23 (1.8, 2.71)	0.41 (0.33, 0.51)	0.98 (0.9, 1)	24.1
2.7	6	1.78 (1.45, 2.16)	0.41 (0.32, 0.52)	0.99 (0.94, 1)	27.0
2.7	8	1.54 (1.25, 1.85)	0.42 (0.32, 0.52)	0.99 (0.94, 1)	30.2
2.7	10	1.38 (1.12, 1.65)	0.42 (0.32, 0.51)	0.99 (0.95, 1)	33.2
2.7	12	1.28 (1.05, 1.56)	0.42 (0.33, 0.51)	0.99 (0.95, 1)	35.8

$R_0^1$  represents the reproduction number before the implementation of lockdown,  $1/\sigma$  represents the average duration of virus detectability beyond the infectious period, seed represents the number of infectious people on 4 February 2020, p represents the proportion of asymptomatic infections and  $1 - w$  represents the reduction in transmissibility after the implementation of lockdown on 24 February 2020. DIC denotes the Deviance Information Criterion.

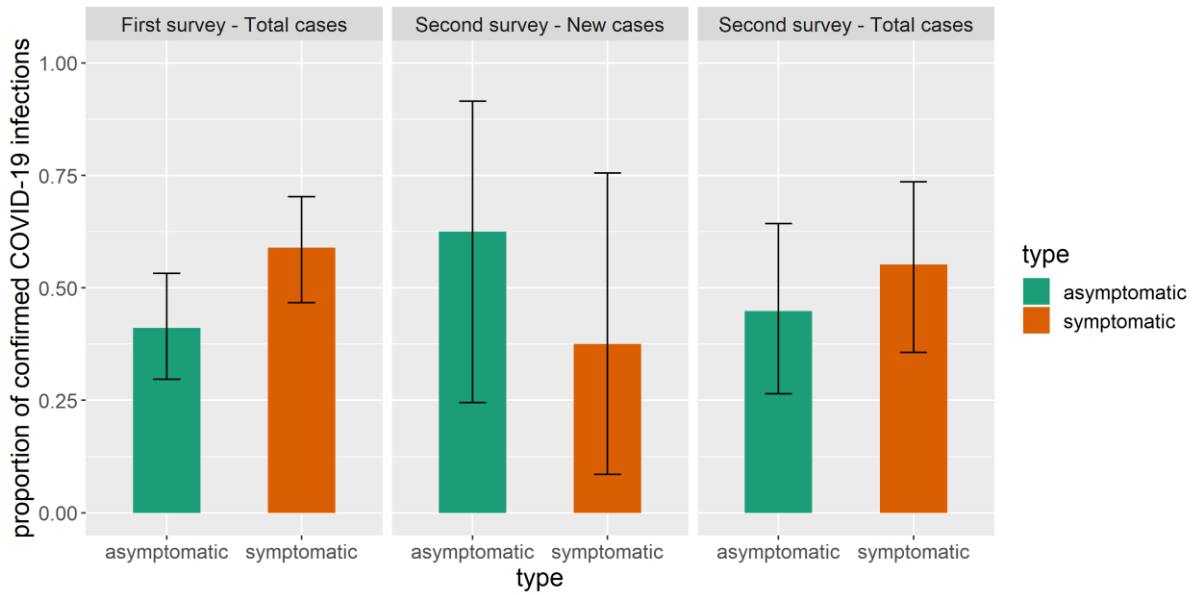
## Supplementary Figures



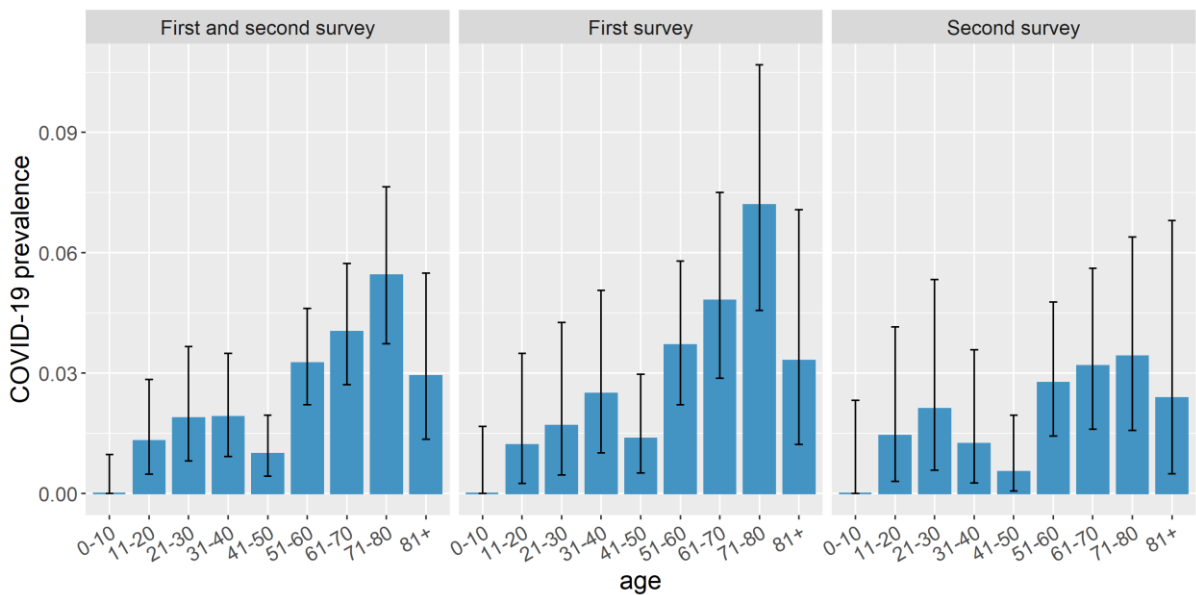
**Figure S1:** Age distributions (in years) of the subjects enrolled in the two surveys.



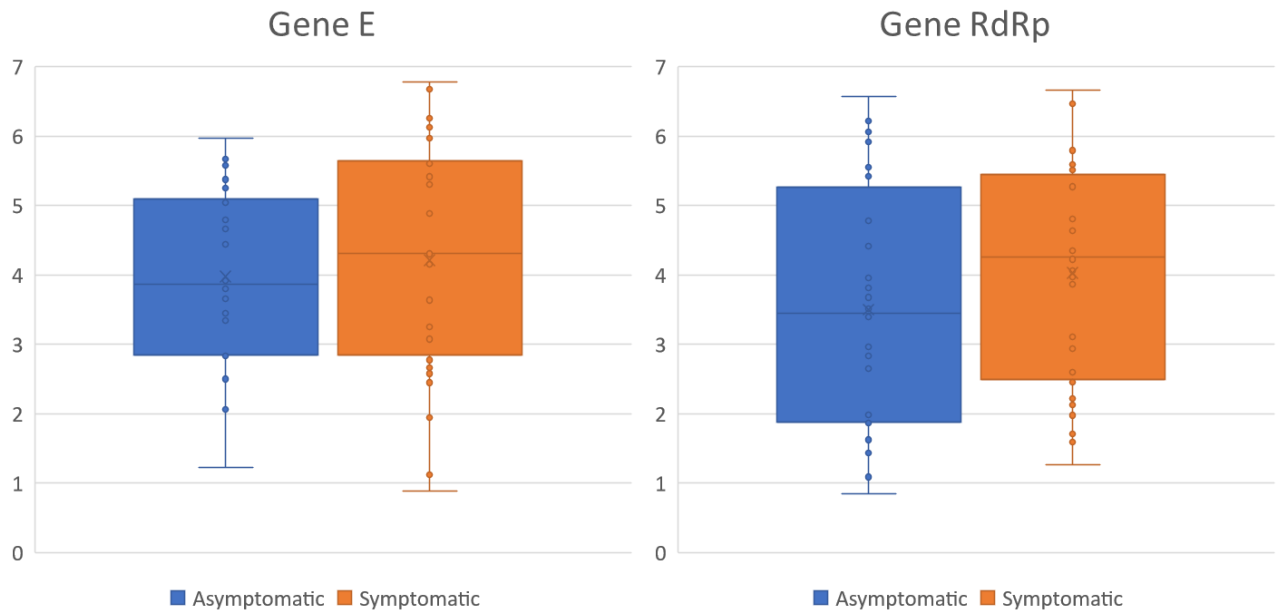
**Figure S2:** Frequency of individual symptoms among confirmed COVID-19 infected subjects across the whole study period (i.e. first and second survey aggregated).



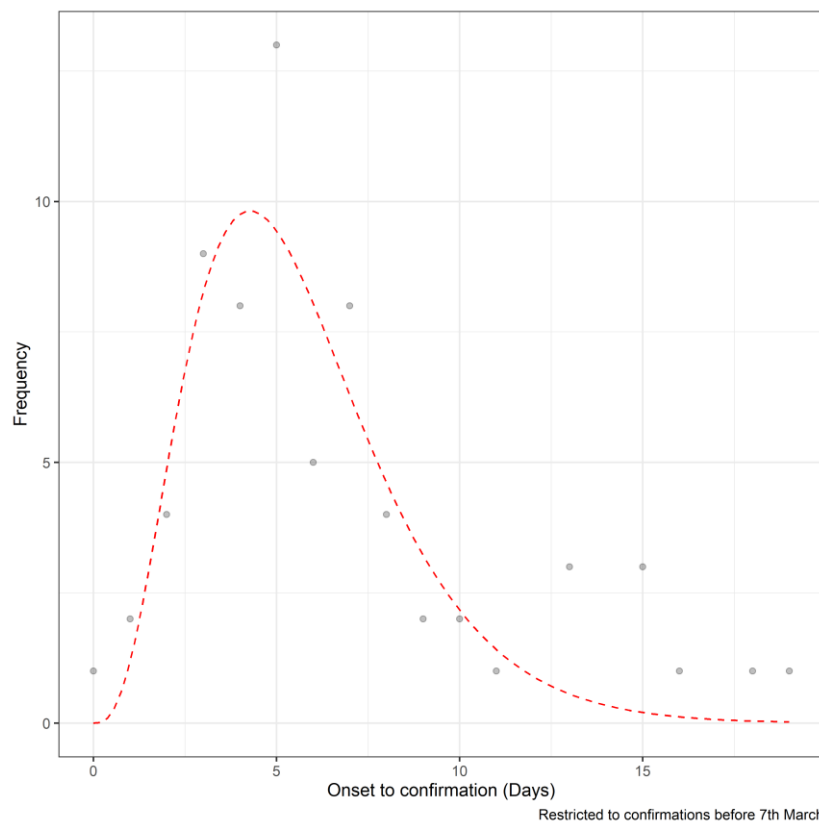
**Figure S3:** Relative proportion of asymptomatic and symptomatic SARS-CoV-2 infections among the total number of positive swabs in the first survey (First survey – Total cases), second survey (Second survey – Total cases) and among the number of new positive swabs in the second survey (Second survey – New cases).



**Figure S4:** SARS-CoV-2 prevalence by age at the first and second surveys combined and at the first and second surveys separately.

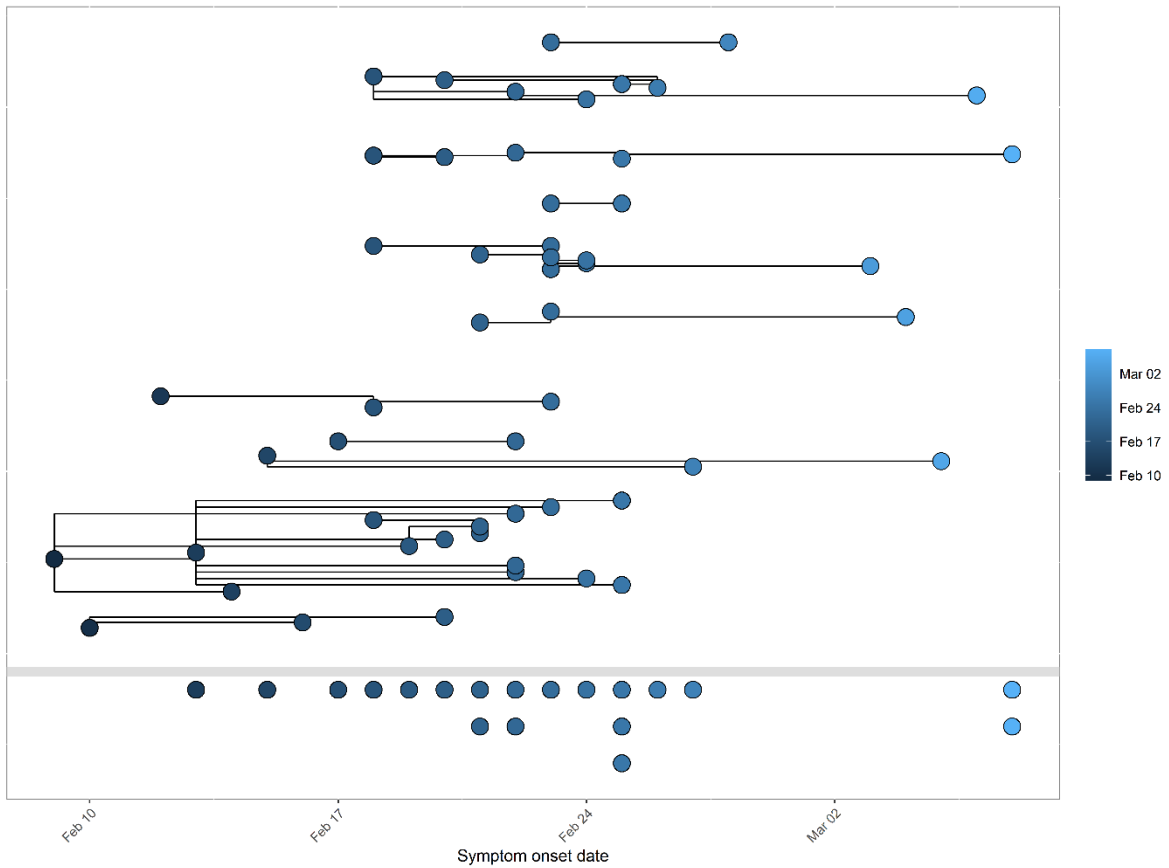


**Figure S5:** Box and whisker plots showing data distribution expressed as genome equivalent copies per ml and calculated from RT-PCR interpolated values. Log<sub>10</sub> values are plotted (y-axis) (see supplementary data file for raw data and derived values of genome equivalent copies).

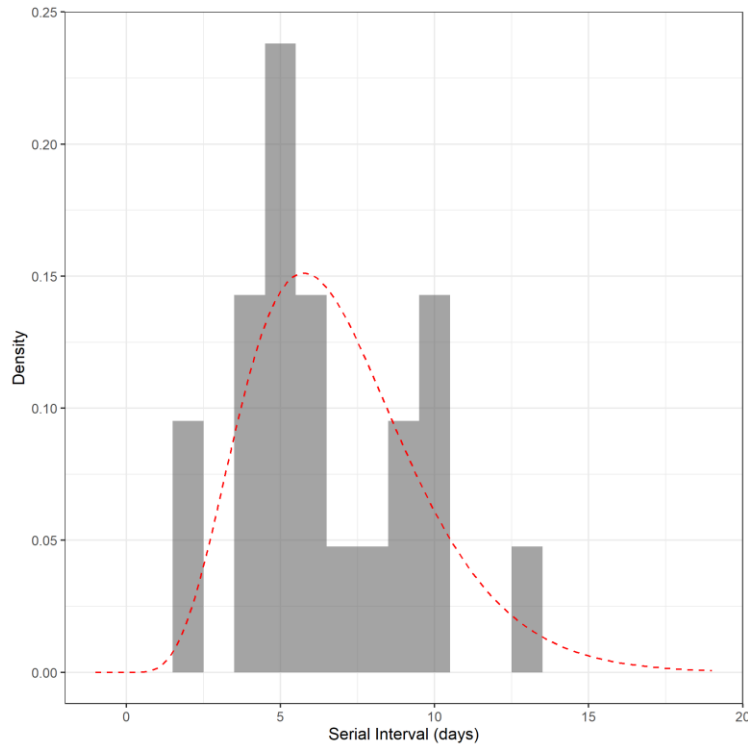


**Figure S6:** Frequency of the onset to confirmation time-lags in the first survey (points) and fitted gamma distribution with mean 5.7 days and standard deviation 2.8 days (scale = 1.4 and shape = 4.1).

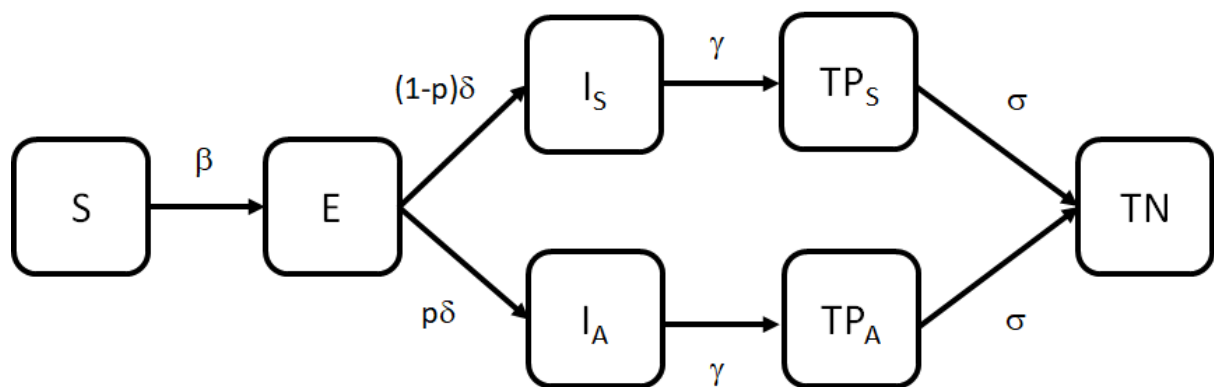




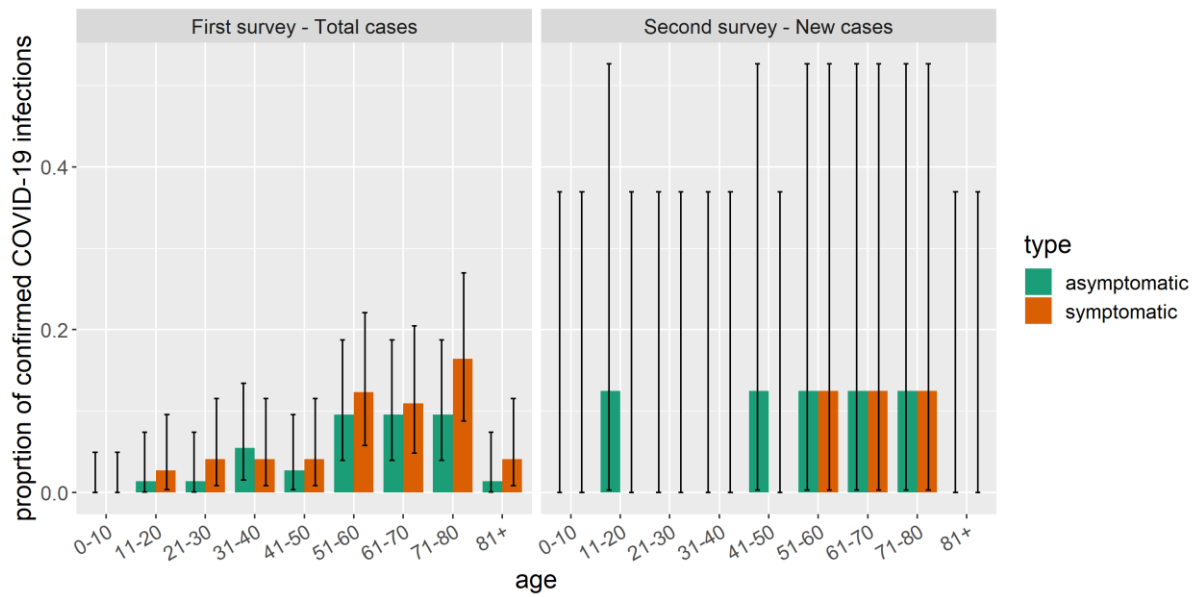
**Figure S7:** Graphical representation of the transmission chains. Each circle represents a test positive subject. The colour of the circle represents the observed or imputed onset date. Edges (lines connecting circles) show linked cases. Unconnected nodes above the grey line represent cases linked to a contact with unknown onset date. Nodes below the grey line are unconnected cases and represent confirmed cases with unknown sources of transmission.



**Figure S8:** Observed (bars) and fitted (red line) serial interval (time between the onset of symptoms of the infector and the onset of symptoms of the infected) distribution based on the transmission chain inferred from the data collected in Vo', for individuals with symptom onset before the lockdown. The fitted gamma distribution has mean 6.93 days and standard deviation 2.85 days (shape = 5.93 and scale = 1.17).



**Figure S9:** Flow chart of the mathematical model fitted to the point prevalence data observed in Vo' at the first and second survey.



**Figure S10:** Age distribution and relative proportion of asymptomatic and symptomatic COVID-19 among the total number of positive swabs in the first survey (First survey – Total cases) and among the number of new positive swabs in the second survey (Second survey – New cases).