

# Combining mpox vaccination and behavioural changes for mpox control among men who have sex with men: a mathematical modelling study

Maria Xiridou<sup>1\*</sup>, Daphne Amanda van Wees<sup>1</sup>, Philippe Adam<sup>2,3</sup>, Fuminari Miura<sup>1,4</sup>, Eline Op de Coul<sup>1</sup>, Maarten Reitsema<sup>1,6</sup>, John de Wit<sup>2,5</sup>, Birgit van Benthem<sup>1</sup>, Jacco Wallinga<sup>1,6</sup>

<sup>1</sup> *Centre for Infectious Disease Control, National Institute of Public Health and the Environment, Bilthoven, the Netherlands.*

<sup>2</sup> *Centre for Social Research in Health, UNSW Sydney, Sydney, Australia.*

<sup>3</sup> *Institute for Prevention and Social Research, Utrecht, the Netherlands.*

<sup>4</sup> *Center for Marine Environmental Studies, Ehime University, Ehime, Japan.*

<sup>5</sup> *Department of Interdisciplinary Social Science, Utrecht University, Utrecht, the Netherlands.*

<sup>6</sup> *Department of Medical Statistics and Bioinformatics, Leiden University Medical Center, Leiden, the Netherlands.*

**\* Corresponding author:** Maria Xiridou, Centre for Infectious Diseases Control, Department of Epidemiology and Surveillance, National Institute of Public Health and the Environment, PO Box 1, 3720 BA Bilthoven, The Netherlands. Tel: +31629642155. Email: [maria.xiridou@rivm.nl](mailto:maria.xiridou@rivm.nl).

**Type of manuscript:** Original Research Article.

**Running head:** Mpox vaccination for MSM.

**Conflicts of interest:** The authors declare no conflicts of interest.

**Financial support:** No financial support was received for this work. This preprint has not been certified by peer review and should not be used to guide clinical practice.

**Data availability:** Data with the numbers of daily mpox cases in the Netherlands are freely available on the website of the National Institute of Public Health and Environment of the Netherlands:

<https://www.rivm.nl/en/mpox/current-information-about-mpox>. Data from the PrEP pilot are not available for replication, because they are third-party data and are not freely available. They are data from the Dutch national registration of Sexual Health Centre consultations (SOAP). Pseudonymized individual participant data can be requested for scientific use with a methodologically sound proposal submitted to the SOAP registration committee for approval. Information can be requested from the authors. The code for the model analyses is available at <https://github.com/rivm-syso/Mpox-Vac-RiskChanges>.

**Publication history:** This manuscript was previously published in medRxiv:

<https://doi.org/10.1101/2025.01.06.25320043>.

**Counts:** Text: 2968/3000 words. Abstract: 249/250 words. Inserts: 6 tables or figures. References: 49.

**Acknowledgements:** The authors would like to thank Manon Haverkate for the data on mpox vaccinations, Laura Kayaert for data on mpox cases, Danja Sarink for assistance with the data for the analyses on transitions between risk groups, Ilja van Bergen for suggestions about the impact of behaviour, Jantien Backer for assistance with R code, Hester Korthals-Altes for assistance with modelling the mpox risk groups.

## **ABSTRACT**

### **Background**

The 2022 outbreak of mpox subclade IIb in the Netherlands affected primarily men who have sex with men (MSM). Despite the sharp decline in cases, there are concerns about future mpox outbreaks. We investigated the impact of mpox introductions, accounting for vaccination, behavioural changes, and introductions of subclades with different characteristics.

### **Methods**

We developed a compartmental model for mpox among MSM. We accounted for three risk levels for mpox, based on sexual activity, and allowed individuals to change risk level. We examined several scenarios with mpox introductions.

### **Results**

In January 2024, 54% of MSM at high risk for mpox had immunity; this declined to 39% a year later, due to changes in risk levels. Mpox introductions in May 2025 resulted in small outbreaks, but the numbers of cases were 34% or 48% lower with vaccination carried out in August-October 2024 or February-April 2025, respectively, compared to the situation without vaccination in 2024-2025. With earlier initiation or greater magnitude of behavioural adaptations, the number of mpox cases was 17-51% smaller. Introduction of a subclade with 10% higher transmission probability than subclade IIb resulted in 77% more cases.

### **Conclusions**

Due to changing levels of mpox risk, the fraction immune in the high-risk group will decline, leading to a greater possibilities for future mpox outbreaks. The number of cases can be reduced with preventive vaccination and behavioural adaptations. Recurring vaccination campaigns should prioritise individuals most at risk, ensuring those entering high-risk groups are reached. Campaigns promoting timely behavioural changes remain crucial.

### **KEYWORDS**

Monkeypox, mpox, men who have sex with men, MSM, mathematical model, vaccination, sexual behaviour, risk level.

## Introduction

In 2022-2023, there was a global mpox outbreak caused by subclade IIb, resulting in 93,030 mpox cases registered in 117 WHO Member States across all six WHO regions.<sup>1</sup> Before this outbreak, there had been mpox outbreaks in the Democratic Republic of Congo and other African countries, mainly caused by mpox subclade Ia.<sup>1-3</sup> Since 2023, there has been an increase in mpox cases and deaths in the Democratic Republic of Congo, due to subclade Ia and, most recently, also due to the novel subclade Ib.<sup>1,3-5</sup> In 2024, travel-associated clade I cases were reported in several countries in Europe, North America, and Asia.<sup>6-9</sup>

The 2022 mpox outbreak in the Netherlands affected primarily men who have sex with men (MSM). The earliest date of symptom onset among confirmed mpox IIb cases was 27 April 2022.<sup>10</sup> On 25 July 2022, the mpox preventive vaccination campaign started, targeting MSM and transgender persons at high risk for mpox.<sup>11</sup> The size of this target group at that point was estimated at around 40,000 individuals.<sup>11</sup> Approximately 18,000 individuals were vaccinated in the first round of preventive mpox vaccination (July 2022 – January 2023) and 1,500 in the second round (May-December 2023).<sup>10-12</sup> In December 2023, the Health Council of the Netherlands recommended the continuation of preventive vaccination,<sup>13</sup> but since then there has been no national vaccination campaign; coverage and timing of a new vaccination campaign have not been determined yet.

The role of vaccination in future outbreaks depends on the level of immunity among the group of MSM at high risk of infection. However, this group does not consist of the same persons through time: individuals may enter or exit the high-risk group, due to changes in behaviour. MSM who were at low risk for mpox in 2022-2023 were probably neither infected nor vaccinated and, hence, they are not immune for mpox. If, due to changes in behaviour, these individuals are later at high risk for mpox, the percentage immune within the high-risk group will decline. A study using data from the Amsterdam Cohort Studies found that MSM at low risk for HIV infection had a 0.11 probability of being at higher risk after 6 months,<sup>14</sup> indicating that changes in the level of risk of an individual may occur over time.

Using a mathematical model for mpox among MSM, we investigated the impact of introductions of new mpox cases, accounting for the possibility of changes in risk levels, due to variations in behaviour. We examined the impact of vaccination and behavioural adaptations on the spread of mpox. The analyses were carried out with the characteristics of mpox subclade IIb, responsible for the 2022-2023 global outbreak. Due to the recent

upsurge of subclade Ib,<sup>4,15</sup> we also investigated the impact of introductions of cases infected with a (sub)clade with different transmissibility and severity than those of IIb.

## Methods

### *Transmission model*

We developed a deterministic compartmental model for mpox among MSM (Figure S1). The model parameters are defined in Tables 1-2. We accounted for transmission via sexual or intimate contacts. In the model, MSM were divided into three groups, based on their level of risk for mpox: low, medium, and high risk (Table 2 and S1 in Supplement). The division into risk groups was based on the number of sexual partners of MSM, obtained from data from the national STI surveillance database.<sup>12</sup> We allowed for transitions between the three risk groups, meaning that the risk level of an individual may change over time, due to changes in his behaviour: MSM at low risk for mpox may have medium or high risk later and vice versa. The probabilities of transitions between risk groups were calculated with a methodology developed earlier<sup>14,16</sup> (for details, see the Supplement and Tables S1-S2). The model was calibrated to the daily number of mpox cases,<sup>10</sup> according to date of symptom onset, using a Bayesian approach (details are given in the Supplement). To examine the impact of changes in risk levels, we simulated the mpox outbreak of 2022-2023 under different parameter settings and repeated the calculations without changes in risk levels, such that MSM had the same risk level throughout 2022-2023.

### *Mpox and vaccination*

In the model, we distinguished four stages of mpox infection: exposed (not infectious), pre-symptomatic infectious, symptomatic infectious, and recovered/removed. We assumed that when symptomatic infectious cases start refraining from physical contacts (due to symptoms, knowledge of mpox, and/or advice from health professionals) or are hospitalized, they cannot infect others and they transition to the compartment “recovered/removed”. MSM with past infection are assumed to be immune for the duration of the model calculations (approximately 4 years). MSM who received two vaccine doses in 2022-2023, as well as MSM who received both one vaccine dose in 2022-2023 and smallpox vaccination in the past (via the national smallpox vaccination program) are referred to as fully vaccinated. MSM who had only the old smallpox vaccination or

only one vaccine dose in 2022-2023 are referred to as partially vaccinated. There is evidence that vaccine protection wanes over time;<sup>17-18</sup> therefore, individuals in the compartments “fully vaccinated” transition to the respective compartments “partially vaccinated” after 3 years. For simplicity, we did not account for waning protection for those partially vaccinated. The numbers of MSM vaccinated in 2022-2023 in the model were obtained from data from the National Institute of Public Health and the Environment<sup>11,12</sup> (Figure S2 in the Supplement).

### *Behavioural adaptations in 2022*

The model calculations started on 27 April 2022, the earliest date of symptom onset among confirmed mpox cases in the Netherlands. Earlier modelling work has shown that the 2022 outbreak in the Netherlands was greatly influenced by behavioural adaptations,<sup>19</sup> that could have been a result of increased awareness and knowledge about mpox, authorities’ recommendations, perceived risk or perceived severity of mpox.<sup>19,20</sup> Therefore, we included also in this study the possibility of behavioural adaptations: (a) a reduction in the number of sexual partners (for instance, due to increased awareness and perceived risk for mpox) and (b) a reduction in the effective infectious period (for instance, due to authorities’ recommendations to refrain from sexual contacts when diagnosed or due to increased knowledge about mpox thus recognising symptoms earlier). These adaptations were modelled to occur at two time points: in June and in July 2022. The timing and level of the adaptations were determined via a fitting process. We assumed that by the end of 2022, these adaptations were reversed and behaviour was as before May 2022, since the mpox outbreak had waned.

### *Scenarios for 2024-2026*

We examined four scenarios based on the introduction of 5 or 10 new mpox cases on 1 May or 1 November 2025. The four scenario analyses were repeated five times: (a) without vaccination after 2023; (b-c) with 3,000 vaccinations carried out in August-October 2024 or February-April 2025; (d-e) with 30,000 vaccinations carried out in August-October 2024 or February-April 2025. The numbers of vaccinations were chosen to correspond to a small (3,000) or a large (30,000) vaccination program, reflecting experts’ recommendations to the Dutch government about possible mpox outbreaks and mpox vaccination in 2024-2025. For these scenarios, we assumed that the timing and levels of behavioural adaptations would be as in 2022. However, the knowledge and experience gained during the 2022 mpox outbreak may influence behaviours in the future. Behavioural adaptations might occur more quickly or be more pronounced. On the other hand, mpox may no longer be

perceived as a significant threat and fatigue in responding to authorities' recommendations could lead to delayed or less substantial adaptations. Therefore, we examined scenarios with behavioural adaptations occurring (a) 14 days earlier or 14 days later than in 2022; (b) at the same time point as in 2022, but the reductions in number of partners and in the duration of the effective infectious period were 25% higher or 25% lower than in 2022; and (c) when the number of symptomatic infectious cases exceeds 10 or 20 cases. Finally, we examined also two scenarios with introductions of mpox cases infected with subclades having different characteristics than those of subclade IIb: (a) 10% higher transmission probability per sexual act or (b) 50% higher hospitalization rate.<sup>4,21-23</sup> The scenarios for 2024-2026 are summarized in Tables S4-S5 in the Supplement.

## Results

### *MSM with immunity to mpox*

From the model, we calculated the percentage of MSM with immunity, including those who have had mpox, or mpox vaccination, or smallpox vaccination. By the end of 2023, when preventive mpox vaccination was stopped, the percentage of MSM with immunity was calculated at 30%, 34%, and 54% among MSM with low, medium, and high risk for mpox, respectively (Figure 1). We repeated the model calculations assuming that all MSM remained with the same risk level throughout 2022-2023 (ignoring possible changes in risk levels); in that case, the respective percentages were 27%, 33%, and 89%. The difference between the two percentages among high-risk MSM reflects MSM who were at high risk for mpox at the beginning of the outbreak, but were later “replaced” by MSM who were at low risk at the beginning of the outbreak. Due to changes in risk levels, the percentage with immunity among those with high risk for mpox declines over time to 39% on 1 January 2025 and 34% on 1 November 2025 (Figure 1).

### *New mpox introductions and the impact of vaccination*

In the scenarios without additional vaccinations in 2024-2025, the introduction of 5 cases on 1 May 2025 resulted in a small outbreak of 760 cases in the first 4 months and a peak of 16 daily cases (Figure 2 and Table S4). The introduction of the same number of cases half a year later (1 November 2025) resulted in more cases (860 in the first 4 months, with a peak of 18 daily cases), as the fraction with immunity among MSM at high risk of mpox declined over time (Figure 1). With 3,000 vaccinations, the number of cases was smaller,

compared to the scenario without additional vaccinations. However, as the period between vaccination and introduction of new cases became longer, the number of cases increased, with a total of 502 cases in the first 4 months if vaccination was carried out in August-October 2024, compared to a total of 395 cases, if vaccination was carried out in February-April 2025. With 30,000 vaccinations, there were very few secondary cases, especially in the scenarios where index cases were introduced short after vaccination was carried out. Similar findings were obtained in the scenarios based on the introduction of 10 new mpox cases (Figure S3 in the Supplement), which resulted though in almost twice as many mpox cases, compared to the scenarios with 5 new introductions (Figure S3, Table S4).

#### *Different behavioural adaptations, compared to the 2022 outbreak*

In the scenarios where the behavioural adaptations started 14 days earlier or the level of reduction was higher, the number of mpox cases was lower, compared to the respective scenario with behavioural adaptations occurring as in 2022: for instance, 51% and 17% lower, respectively, with introductions on 1 May 2025 (Figure 3, Table S5). When the reductions started later or the level of reduction was smaller than in 2022, the number of mpox cases was higher: for instance, 82% or 32% higher, respectively, with introductions on 1 May 2025. With behavioural adaptations occurring when the number of symptomatic cases exceeded 10 or 20 cases, the number of mpox cases was considerably lower than with adaptations as in 2022: 92% or 84% lower, respectively.

#### *Introduction of mpox cases infected with a different subclade*

Introduction of 5 mpox cases on 1 May 2025 resulted in 82% more cases, when the newly introduced cases were infected with a subclade with 25% higher transmissibility than subclade IIb (Figure 4 and Table S5).

Introduction of cases infected with a subclade with higher hospitalization rates resulted in 74% less cases, assuming that those hospitalized do not have contacts and hence do not infect others. Similar results were observed in scenarios based on the introduction of 10 or 20 mpox cases infected with a different (sub)clade (Figure S4 in Supplement).

## **Discussion**

In this study, we estimated that when preventive mpox vaccination was stopped in the Netherlands by the end of 2023, more than half of MSM at high risk for mpox had immunity via infection or vaccination. However, this



fraction may be declining over time as MSM at low risk in 2022, who are possibly still uninfected and unvaccinated, may change their behaviour and be at higher risk in later years. In our analyses, future introductions of mpox cases resulted in a higher number of secondary cases than the same number of introductions at an earlier time point, due to the declining fraction of immune individuals among those at high risk. In the scenarios including 3,000 vaccinations in 2024-2025, mpox spread was reduced compared to the scenarios without vaccinations after 2023, but with longer time intervals between roll-out of vaccination and introduction of new cases, the number of mpox cases in future outbreaks was higher. When we included in our analyses a much higher number of 30,000 vaccinations in 2024-2025, new mpox introductions resulted in only limited transmission. Furthermore, we found that behavioural adaptations strongly influenced the size of future outbreaks: when we incorporated early initiation or great magnitude of behavioural adaptations, the number of secondary mpox cases was substantially smaller. In analyses accounting for introduction of new cases infected with a subclade that is more transmissible than subclade IIb, we found higher numbers of mpox cases, compared to the respective scenarios for subclade IIb. A subclade with higher hospitalization rate resulted in less mpox cases, assuming that those hospitalized did not infect others.

The findings of this study highlight the necessity to maintain a high level of immunity among MSM at high risk for mpox. Therefore, preventive vaccination strategies should prioritise those at high risk, ensuring that individuals newly entering the high-risk group are promptly vaccinated. Booster vaccinations of those vaccinated a few years earlier could also contribute to increasing the level of immunity. This underscores the need to provide again opportunities to receive mpox vaccination, either via a campaign or via structural availability of the vaccine. In designing interventions targeting those at high risk, we should take into consideration that individuals who are not immune to mpox may enter this group due to modifications in their behaviour, thus reducing the fraction immune within the high-risk group. Recurring vaccination campaigns (for instance, repeated annually) of a few thousand MSM at high risk may be of great value to control mpox spread. Our results stress the significance of timely behavioural adaptations and the importance of accurate information enabling individuals to adapt their behaviour in order to protect themselves and their partners, but also information that facilitates the decision to vaccinate. To this end, social marketing campaigns and other measures, aiming to help people make timely positive decisions and/or changes can play a crucial role.

Our findings regarding the importance of behavioural adaptations in response to a future outbreak are in agreement with our earlier modelling study showing that the 2022 outbreak in the Netherlands was also shaped by behavioural adaptations.<sup>19</sup> This was corroborated by modelling studies from other countries.<sup>24-27</sup> Modelling studies of possible future mpox outbreaks have also shown that vaccination and behavioural interventions could considerably reduce the size of future outbreaks of subclade IIb<sup>28</sup> or Ib.<sup>29</sup>

The transmission model used in this study is simple, yet it accounts for the most important factors that determine mpox dynamics: different stages of mpox infection, different levels of mpox risk, different vaccination statuses, and behavioural adaptations in response to an outbreak. A strength of our study is that the model is informed by observed epidemiological and behavioural data on sexual behaviour, as well as the reported numbers of vaccinations and mpox cases in the Netherlands. Furthermore, this is the first modelling study that accounts for changes in the risk level of MSM which allows us to make projections for longer periods ahead.

A limitation of this study is that the risk for mpox was based only on the number of sexual partners. A study among MSM in the Netherlands found that PrEP use for HIV prevention, living with HIV, and having sex in sex venues/parties were also independent risk factors for mpox diagnosis.<sup>30</sup> Furthermore, we did not account for differences in behaviour according to HIV-status, PrEP use for HIV prevention, or age. The model can be expanded to account for these forms of heterogeneity and future research could investigate their impact on mpox transmission. Finally, due to lack of data, we made several assumptions about uncertain parameters, such as the duration of immunity after infection or vaccination, the characteristics of different mpox subclades, or the level of awareness among MSM and how that influences their behaviour currently and in the event of a rise in mpox cases. It would be beneficial to obtain data that enable accurate estimation of these characteristics.

In conclusion, our study reveals that the possibility of an mpox outbreak will increase over time, despite the experienced infections and vaccinations thus far, as not-immune individuals enter the group with high risk for mpox. Our findings highlight the importance of a combination of vaccination and behavioural adaptations to control future outbreaks. The severity of the outbreaks could be reduced with early behavioural adaptations of considerable magnitude. Conversely, the outbreak size may increase as the interval between vaccination campaigns and new mpox introductions is extended, since uninfected-and-unvaccinated individuals may enter

the high-risk group, thus reducing the fraction immune within this group. It is imperative to maintain a high level of immunity among those at high risk for mpox, indicating the importance of recurring vaccination campaigns prioritizing those most at risk. Social marketing and other interventions aiming to assist individuals make timely positive decisions about their behaviours are essential. Surveillance and preparedness for possible future outbreaks remain crucial.

**Table 1.** Model parameters. Ranges of values are given for parameters included in the uncertainty analysis.

Parameter		Value	Source
Duration latent period, days	$1/\theta$	4	26, 31-34
Duration pre-symptomatic infectious period, days	$1/\delta$	4	32
Effective symptomatic infectious period (days) before $T_1$	$1/\gamma$	4-21	1, 32, 35, 36
Effective symptomatic infectious period (days) between $T_1$ and $T_2$	$1/\gamma$	2-14	Assumption <sup>a</sup>
Effective symptomatic infectious period (days) after $T_2$	$1/\gamma$	2-7	Assumption <sup>a</sup>
Hospitalization rate, per day	$\zeta$	0.01	10, 37
Fatality rate, per day	$\mu_d$	0.0004	37, 38
Probability of transmission per sexual contact	$\beta$	0.3-0.7 <sup>a</sup>	19, 24, 39
Partial vaccine protection <sup>b</sup>	$\sigma_1$	70%	10, 40-42
Complete vaccine protection <sup>b</sup>	$\sigma_2$	85%	40-43
Duration of complete vaccine protection <sup>b</sup> , years	$1/\psi$	3	44, 45
% of MSM who were in the past vaccinated against smallpox		15-30%	12, 46, 47
Rate of entry into and exit out of the population <sup>c</sup>	$\mu$	0.02/year	
Mixing parameter for main regular partnerships	$\varepsilon_s$	0.1-0.9	
Mixing parameter for casual partnerships	$\varepsilon_c$	0.1-0.9	
Weekly rate of preventive mpox vaccination for MSM with level of sexual activity $j$ , with $i = 1, 2$ , for 1 <sup>st</sup> and 2 <sup>nd</sup> dose, respectively	$\varphi_{ij}$		Data <sup>d</sup>
Factor increasing transmission probability from symptomatic infectious, compared to pre-symptomatic infectious	$w$	0.1-0.9	Assumption
First time point of behavioural adaptations	$T_1$	17-27 June 2022	19
Second time point of behavioural adaptations	$T_2$	5-15 July 2022	19

Reduction in the number of casual partners of MSM with sexual activity level $j$ between $T_1$ and $T_2$	$D_{1j}$	0-50%	Assumption
Reduction in the number of casual partners of MSM with sexual activity level $j$ after $T_2$	$D_{2j}$	0-50%	Assumption
Number of MSM in the Netherlands		250,000	47, 48
Initial number of mpox cases		3	Assumption

---

<sup>a</sup> Ranges based on model fitting from earlier modelling studies.<sup>19, 24, 39</sup>

<sup>b</sup> Individuals with one vaccine dose (either before 1975 or after 2022) have partial vaccine protection. Full vaccine protection was assumed for those who received two vaccine doses from 2022 onwards or those who had been vaccinated before 1975 and have received at least one vaccine dose from 2022 onwards. Vaccine protection  $\sigma_i$  denotes the reduction in the rate of getting infected and the rate of progressing from latency to infectiousness.

<sup>c</sup> Based on assumption that MSM are sexually active approximately for 50 years.

<sup>d</sup> Hospitalization rate based on data from the national database of notifiable infectious diseases of the Netherlands.<sup>10</sup>

Vaccination rate based on data from the national preventive mpox vaccination program, available from the National Institute of Public Health and Environment of the Netherlands (RIVM).

**Table 2.** Parameters for the three risk groups.

Parameter for activity group <i>i</i>	Activity group			Source
	Low	Medium	High	
% in specific activity group	60%	35%	5%	<sup>a</sup>
Rate of forming regular partnerships per year ( $\alpha_{si}$ )	0.1	0.2	0.7	<sup>19</sup>
Number of sex contacts per regular partner per day ( $u_i$ )	0-2190	0-2320	0-3284	<sup>49</sup>
% with regular partner ( $q_i$ )	68%	58%	55%	<sup>49</sup>
Number of casual partners per day <sup>b</sup> ( $\alpha_{ci}$ )	0-0202	0-0823	0-1-0.6	<sup>a</sup>

<sup>a</sup> Based on data from the Dutch national registration of Sexual Health Centre consultations (SOAP)<sup>12</sup> for MSM participating at the PrEP pilot in the Netherlands, from July 2019 (start of the PrEP pilot) until December 2022 (see Supplement for more details).

<sup>b</sup> The number of casual partners per day for the group with high level of sexual activity was included with a range in the uncertainty analysis.

## FIGURE LEGENDS

**Figure 1.** The percentage of MSM with immunity, as calculated from the model. Top panel: percentage immune on 31 December 2023; accounting for changes in risk level of MSM (grey) or without accounting for changes in risk levels (black). Bottom panel: percentage immune on 1 January, 1 May, or 1 November 2025.

**Figure 2.** Mpox outbreaks after the introduction of 5 new (index) mpox cases on 1 May (solid lines) or 1 November 2025 (dashed lines). Black lines: without vaccinations after 2023; red lines: with 3,000 vaccinations carried out in August-October 2024; pink lines: with 3,000 vaccinations in February-April 2025; dark blue lines: with 30,000 vaccinations in August-October 2024; light blue lines: with 30,000 vaccinations in February-April 2025. The vaccinations in 2024 or 2025 were uniformly distributed over the 3-month period, resulting in 250 or 2,500 vaccinations per week, for the scenarios with total 3,000 or 30,000 vaccinations, respectively.

**Figure 3.** Mpox outbreaks after the introduction of 5 new (index) mpox cases on 1 May (solid lines) or 1 November 2025 (dashed lines) without vaccinations after 2023. Black lines show the scenarios with behavioural adaptations as during the 2022 outbreak, starting approximately 50 days after the earliest day of symptom onset. (a) Behavioural adaptations started 14 days later (green lines) or 14 days earlier (purple lines), compared to the 2022 outbreak. (b) The reduction in the number of partners and the reduction in the effective infectious period were 25% lower (green lines) or 25% higher (orange lines), than those in 2022. (c) Behavioural adaptations started when the number of symptomatic infectious cases exceeded 10 cases (light blue lines) or 20 cases (dark blue lines).

**Figure 4.** Mpox outbreaks after the introduction of 5 new mpox cases on 1 May (solid lines) or 1 November 2025 (dashed lines), without additional vaccinations after 2023. The new cases were infected with a clade having: the same properties as clade IIb, responsible for the 2022 outbreaks (black lines); or with higher infectivity (red lines); or with higher hospitalization rate (blue lines).

## References

1. World Health Organization. 2022-2024 Mpox (monkeypox) outbreak: global trends. Produced 26 November 2024. 2024. Available from: [https://worldhealthorg.shinyapps.io/mpox\\_global/](https://worldhealthorg.shinyapps.io/mpox_global/). Accessed 11 December 2024.
2. McCollum AM, Hill A, Shelus V, et al. Epidemiology of human monkeypox (mpox) worldwide, 2018-2021. *Weekly Epidemiological Record* 2023;3:29-36.
3. World Health Organization. Mpox - Democratic Republic of the Congo. Update 14 June 2024. Available from: [https://www.who.int/news/item/19-08-2024-first-meeting-of-the-international-health-regulations-\(2005\)-emergency-committee-regarding-the-uptsurge-of-mpox-2024](https://www.who.int/news/item/19-08-2024-first-meeting-of-the-international-health-regulations-(2005)-emergency-committee-regarding-the-uptsurge-of-mpox-2024). Accessed 11 December 2024.
4. World Health Organization. First meeting of the International Health Regulations (2005) Emergency Committee regarding the upsurge of mpox 2024. 19 August 2024. Available from: [https://www.who.int/news/item/19-08-2024-first-meeting-of-the-international-health-regulations-\(2005\)-emergency-committee-regarding-the-uptsurge-of-mpox-2024](https://www.who.int/news/item/19-08-2024-first-meeting-of-the-international-health-regulations-(2005)-emergency-committee-regarding-the-uptsurge-of-mpox-2024). Accessed 11 December 2024.
5. Africa Centres for Disease Control and Prevention. Speech of the Director General / Africa CDC on the declaration of mpox as a public health emergency of continental security (PHECS). 13 August 2024. Available from: <https://africacdc.org/news-item/speech-of-the-director-general-africa-cdc-on-the-declaration-of-mpox-as-a-public-health-emergency-of-continental-security-phecs/>. Accessed 11 December 2024.
6. European Centre for Disease Prevention and Control. Confirmed mpox clade Ib case in Germany, risk remains low for EU/EEA. Press release 23 October 2024. Available from: <https://www.ecdc.europa.eu/en/news-events/confirmed-mpox-clade-ib-case-germany-risk-remains-low-eueea>. Accessed 11 December 2024.
7. World Health Organization. Mpox - Sweden. Update 30 August 2024. Available from: [https://www.who.int/emergencies/disease-outbreak-news/item/2024-DON531#:~:text=On%2015%20August%202024%2C%20the,Point%20\(NFP\)%20of%20Sweden](https://www.who.int/emergencies/disease-outbreak-news/item/2024-DON531#:~:text=On%2015%20August%202024%2C%20the,Point%20(NFP)%20of%20Sweden). Accessed 4 December 2024.
8. UK Health Security Agency. The UK Health Security Agency confirms additional cases of clade Ib mpox. Last updated 6 November 2024. Available from: <https://www.gov.uk/government/news/ukhsa-detects-first-case-of-clade-ib-mpox>. Accessed 4 December 2024.



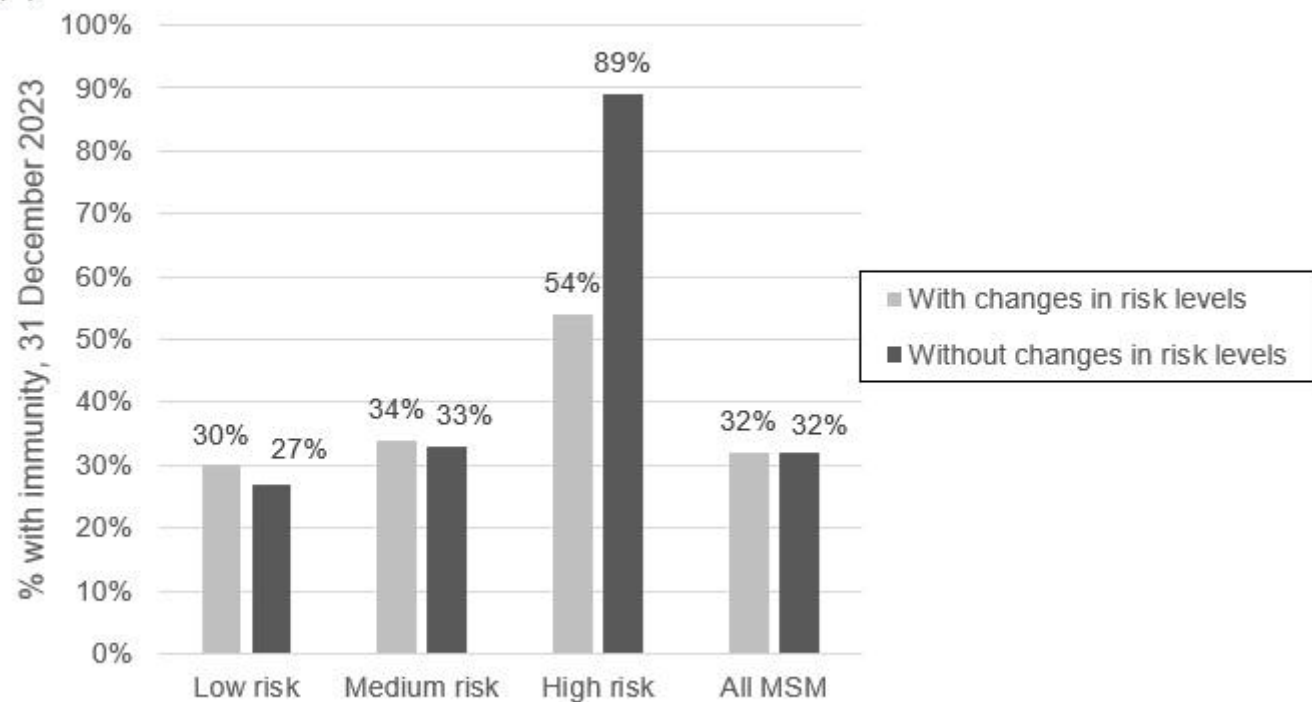
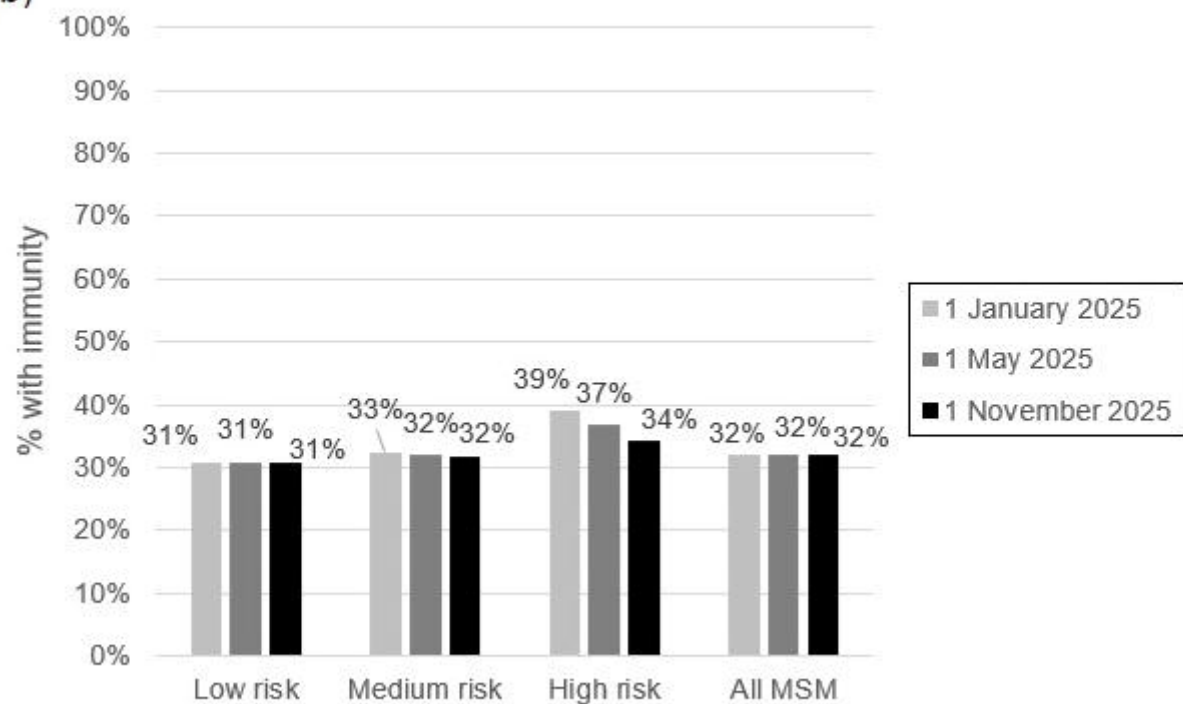
9. Centers for Disease Control and Prevention. Mpox in the United States and around the world: current situation. Update: December 11, 2024. Available from: <https://www.cdc.gov/mpox/situation-summary/index.html>. Accessed 17 December 2024.
10. van Ewijk C, Miura F, van Rijckevorsel G, *et al.* Monkeypox outbreak in the Netherlands in 2022: public health response, epidemiological and clinical characteristics of the first 1000 cases and protection of the first-generation smallpox vaccine. *Euro Surveill* 2023;**28**:2200772.
11. Haverkate MR, Willemstein IJM, van Ewijk CE, *et al.* Factors potentially contributing to the decline of the mpox outbreak in the Netherlands, 2022 and 2023. *Euro Surveill* 2024;**29**(21):pii=2300608.
12. Kayaert L, Sarink D, Visser M, *et al.* Sexually transmitted infections in the Netherlands in 2023, RIVM report 2024-0038. Bilthoven, Center for Infectious Diseases Control, National Institute of Public Health and the Environment (RIVM); 2024.
13. Health Council of The Netherlands. Vaccination against mpox. Advice to the Minister of Health, Welfare, and Sport. Nr. 2023/20, 19 December 2023. Den Haag; 2023.
14. Basten MGJ, van Wees DA, Matser A, *et al.* Time for change: transitions between HIV risk levels and determinants of behavior change in men who have sex with men. *PLoS ONE* 2021;**16**(12):e0259913.
15. World Health Organization. Mpox Key Facts, update 26 August 2024. Available from: <https://www.who.int/news-room/fact-sheets/detail/mpox>. Accessed 4 December 2024.
16. van Wees D, Coyer L, van den Elshout MA, Op de Coul E, van Aar F. The best predictor of future behavior may be the past: exploring behaviour change in men who have sex with men using pre-exposure prophylaxis in the Netherlands. *Archives of Sexual Behaviour* 2024;**53**:2777-93.
17. Nishiura H, Elchner M. Estimation of the duration of vaccine-induced residual protection against severe and fatal smallpox based on secondary vaccination failure. *Infection* 2006;**34**:241-6.
18. van Leeuwen LPM, Shamier MC, Verstrepen BE, *et al.* Orthopoxvirus-specific antibodies wane to undetectable levels 1 year after MVA-BN vaccination of at-risk individuals, the Netherlands, 2022 to 2023. *Euro Surveill* 2024;**29**(38):pii=2400575.
19. Xiridou M, Miura F, Adam P, Op de Coul E, de Wit JBF, Wallinga J. The fading of the mpox outbreak among men who have sex with men: a mathematical modelling study. *J Infect Dis* 2024;**230**:e121-30.
20. Adam P, Op de Coul E, Zuilhof W, Zantkuijl P, den Daas C, de Wit J. Changes in MSM's sexual activity, PrEP use, and access to HIV/STI testing during and after the first Dutch COVID-19 lockdown. *Sex Transm Infect* 2021;**97**(Supplement 1):A26.

21. Whittles LK, Mbala-Kingebeni P, Ferguson NM. Age-patterns of severity of clade I mpox in historically endemic countries. <https://www.medrxiv.org/content/10.1101/2024.04.23.24306209v1>. *medRxiv* 2024.
22. Bunge EM, Hoet B, Chen L, *et al.* The changing epidemiology of human monkeypox-A potential threat? A systematic review. *PLoS Negl Trop Dis* 2022;**16**(2):e0010141.
23. DeWitt M, Polk C, Williamson J, *et al.* Global monkeypox case hospitalisation rates: a rapid systematic review and meta-analysis. *eClinicalMed* 2022;**54**:101710.
24. Brand SPC, Cavallaro M, Cumming F, *et al.* The role of vaccination and public awareness in forecasts of Mpox incidence in the United Kingdom. *Nature Communications* 2023;**14**(1):4100.
25. Lin Y-C, Wen T-H, Shih W-L, Vermund SH, Fang C-T. Impact of vaccination and high-risk group awareness on the mpox epidemic in the United States, 2022-2023: a modelling study. *eClinicalMedicine* 2024;**68**:102407.
26. Zhang XS, Mandal S, Mohammed H, *et al.* Transmission dynamics and effect of control measures on the 2022 outbreak of mpox among gay, bisexual, and other men who have sex with men in England: a mathematical modelling study. *Lancet Infect Dis* 2024;**24**:65-74.
27. Guzzetta G, Marziano V, Mammone A, *et al.* The decline of the 2022 Italian mpox epidemic: role of behavior changes and control strategies. *Nature Communications*. 2024;**15**:2283.
28. Shamier MC, Zaack LM, Götz H, *et al.* The risk of future mpox outbreaks among men who have sex with men: a modelling study based on cross-sectional seroprevalence data. *medRxiv*. 2024.
29. Jin S, Gan G, Endo A, *et al.* Modelling the potential spread of Clade Ib MPXV in an Asia Pacific city. *medRxiv*. 2024:<https://www.medrxiv.org/content/10.1101/2024.09.10.24313384v1>.
30. Adam PCG, Op de Coul ELM, Zantkuijl P, *et al.* A survey-based assessment of rates and covariates of mpox diagnosis and vaccination provides evidence to refine eligibility criteria for mpox vaccination among gay, bisexual, and other men who have sex with men in the Netherlands. *Frontiers Public Health* 2024;**12**:1194844.
31. Wei F, Peng Z, Jin Z, *et al.* Study and prediction of the 2022 global monkeypox epidemic. *J Biosaf Biosecur* 2022;**4**:158-62.
32. Miura F, Backer JA, van Rijckevorsel G, *et al.* Time scales of human mpox transmission in the Netherlands. *J Infect Dis* 2024;**229**:800-4.
33. Thornhill JP, Barkati S, Walmsley S, *et al.* Monkeypox virus infection in humans across 16 countries - April-June 2022. *N Engl J Med* 2022;**387**:679-91.

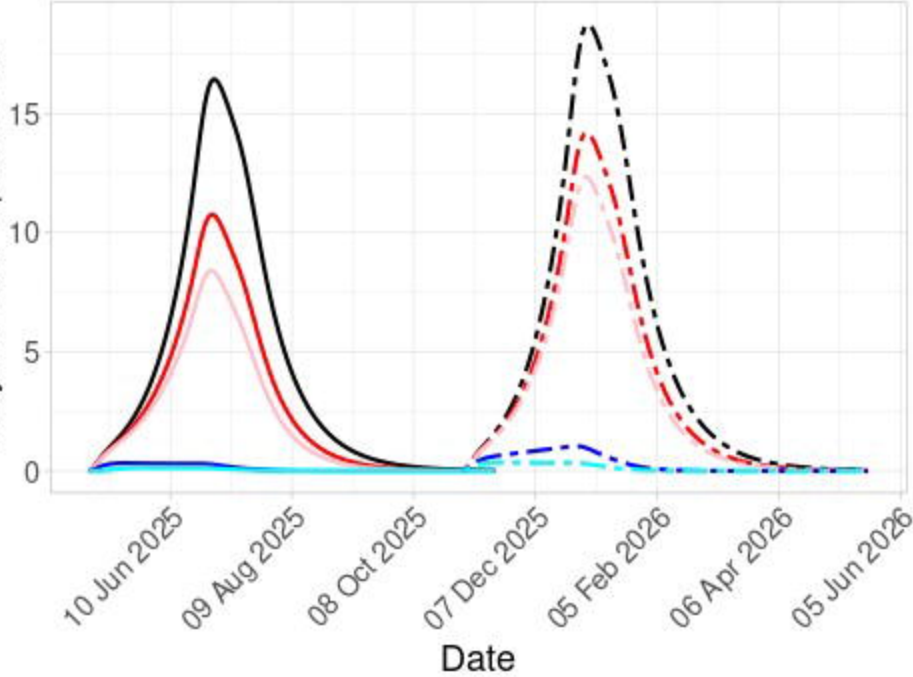
34. Wang S, Zhang F, Yuan Z, *et al.* Serial intervals and incubation periods of the monkeypox virus clades. *J Travel Med* 2022;**29**:taac105.
35. European Centre for Disease Prevention and Control. Considerations for contact tracing during the monkeypox outbreak in Europe, 28 June 2022.
36. Ward T, Christie R, Paton RS, Cumming F, Overton CE. Transmission dynamics of monkeypox in the United Kingdom: contact tracing study. *BMJ* 2022;**379**:e073153.
37. Kozlov M. How deadly is monkeypox? What scientists know. Available from <https://www.nature.com/articles/d41586-022-02931-1#:~:text=Out%20of%20more%20than%2057%2C000,over%20the%20past%20few%20decades>.
38. Brosius I, van Dijck C, Coppens J, *et al.* Presymptomatic viral shedding in high-risk mpox contacts: a prospective cohort study. *J Med Virol* 2023;**95**:e28769.
39. Clay PA, Asher JM, Carnes N, *et al.* Modelling the impact of vaccination and sexual behaviour adaptations on mpox cases in the USA during the 2022 outbreak. *Sex Transm Infect* 2024;**100**:70-6.
40. Dalton AF, Diallo AO, Chard AN, *et al.* Estimated effectiveness of JYNNEOS vaccine in preventing mpox: a multijurisdictional case-control study - United States, August 19, 2022 - March 31, 2023. *Morb Mortal Wkly Rep* 2023;**72**:553-8.
41. Deputy NP, Deckert J, Chard AN, *et al.* Vaccine effectiveness of JYNNEOS against mpox disease in the United States. *N Engl J Med.* 2023;**388**:2434-43.
42. Xu M, Liu C, Du Z, Bai Y, Wang Z, Gao C. Real-world effectiveness of mpox (monkeypox) vaccines: a systematic review. *J Travel Med* 2023;**30**:taad048.
43. Payne AB, Ray LC, Cole MM, *et al.* Reduced risk for mpox after receipt of 1 or 2 doses of JYNNEOS vaccine compared with risk among unvaccinated persons - 43 U.S. Jurisdictions, July 31 - October 1, 2022. *Morb Mortal Wkly Rep* 2022;**71**:1560-4.
44. Hazra A, Zucker R, Bell E, *et al.* Mpox in people with past infection or a complete vaccination course: a global case series. *Lancet Infect Dis* 2024;**24**:57-64.
45. Centers for Disease Control and Prevention. Potential risk for new mpox cases. May 1, 2023. <https://emergency.cdc.gov/han/2023/han00490.asp>.
46. National Institute of Public Health and the Environment (RIVM). Epidemiological situation of mpox in the Netherlands, update 3 April 2023.
47. Statistics Netherlands. The Netherlands in figures 2022. Available from: <https://opendata.cbs.nl/#/> CBS/en.

48. Rutgers NISSO Group. Sexual health in the Netherlands. Delft: Eburon; 2006.

49. Reitsema M, Hoek AJV, van der Loeff MS, *et al.* Preexposure prophylaxis for men who have sex with men in the Netherlands: impact on HIV and Neisseria gonorrhoeae transmission and cost-effectiveness. *AIDS* 2020;**34**(4):621-30.

**(a)****(b)**

Daily number mpox cases

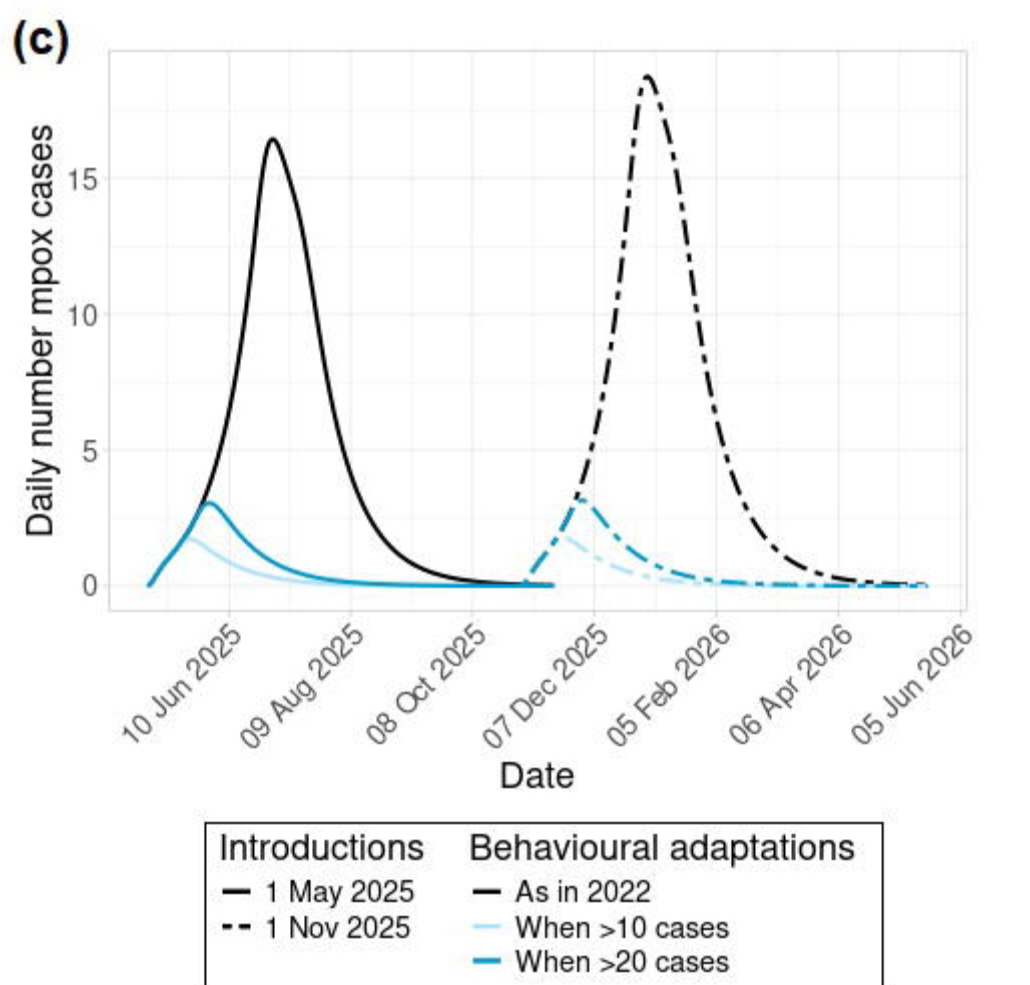
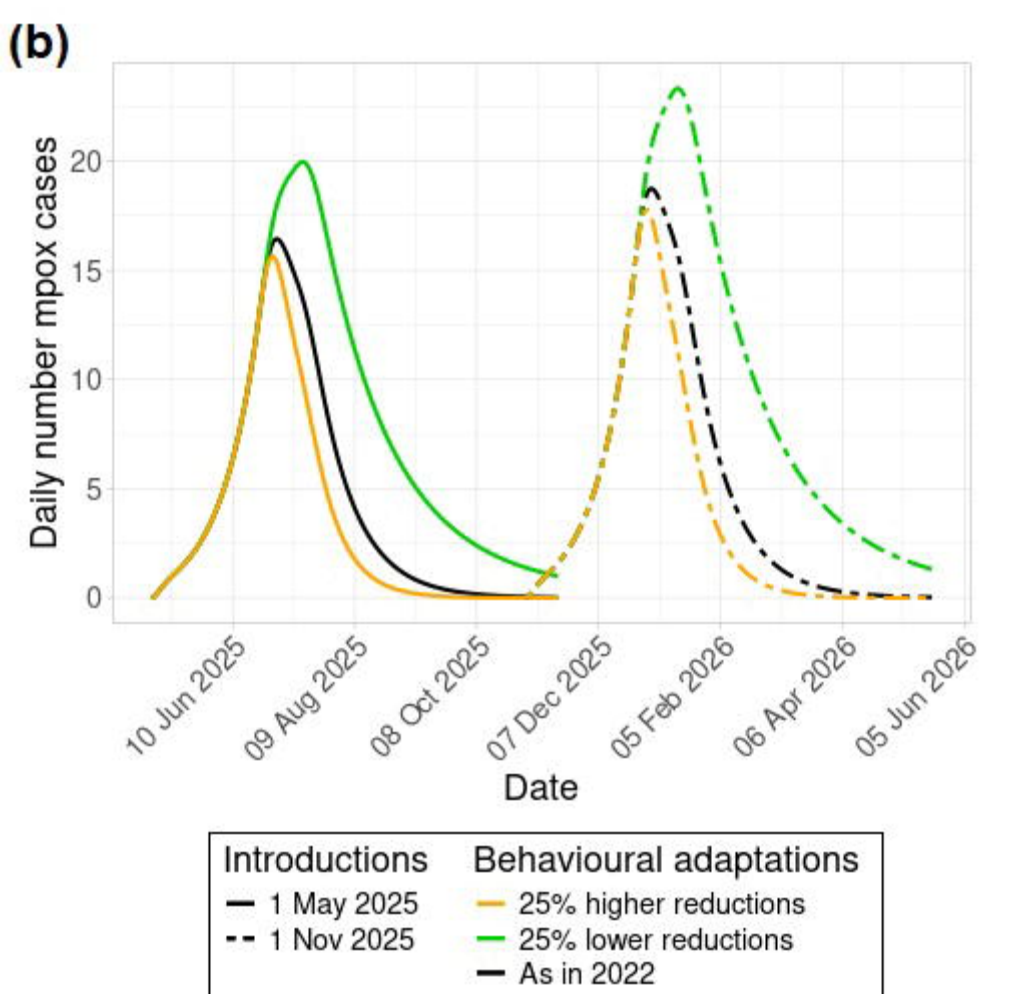
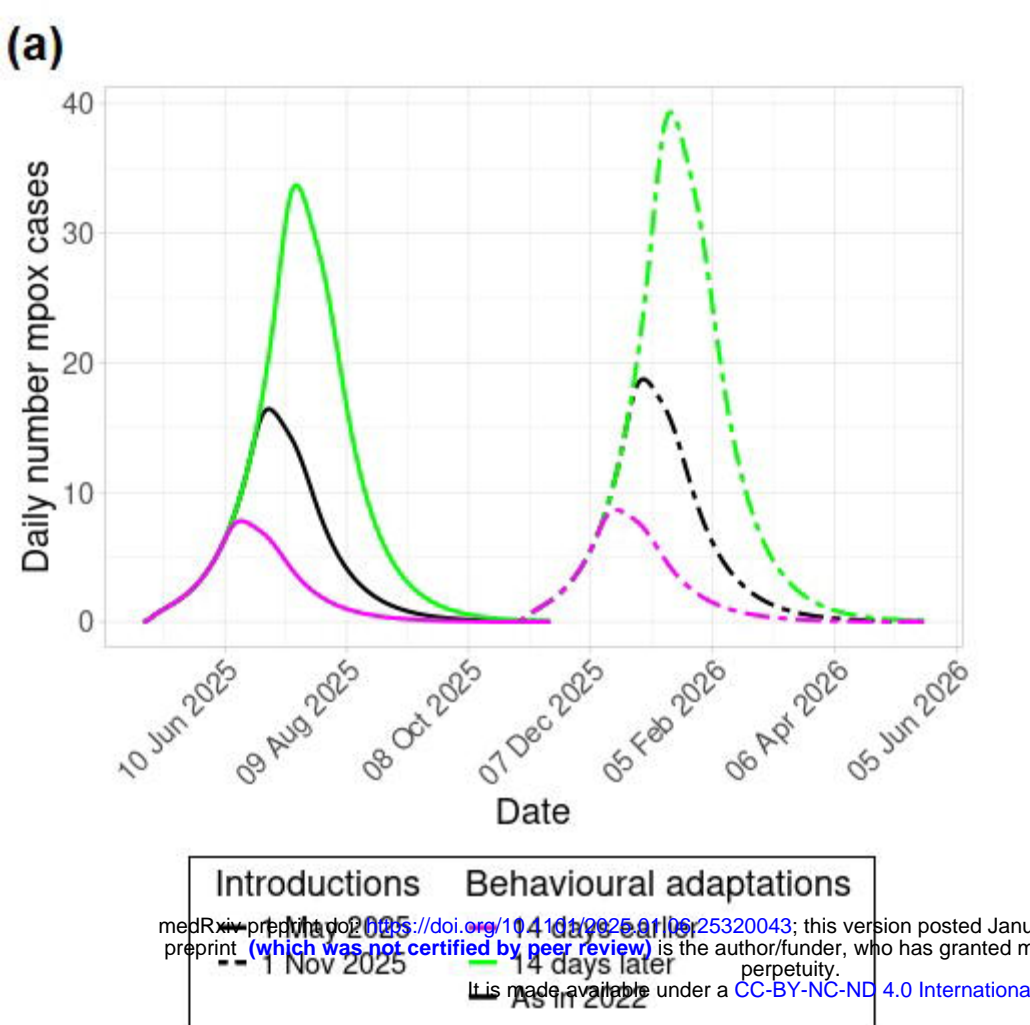


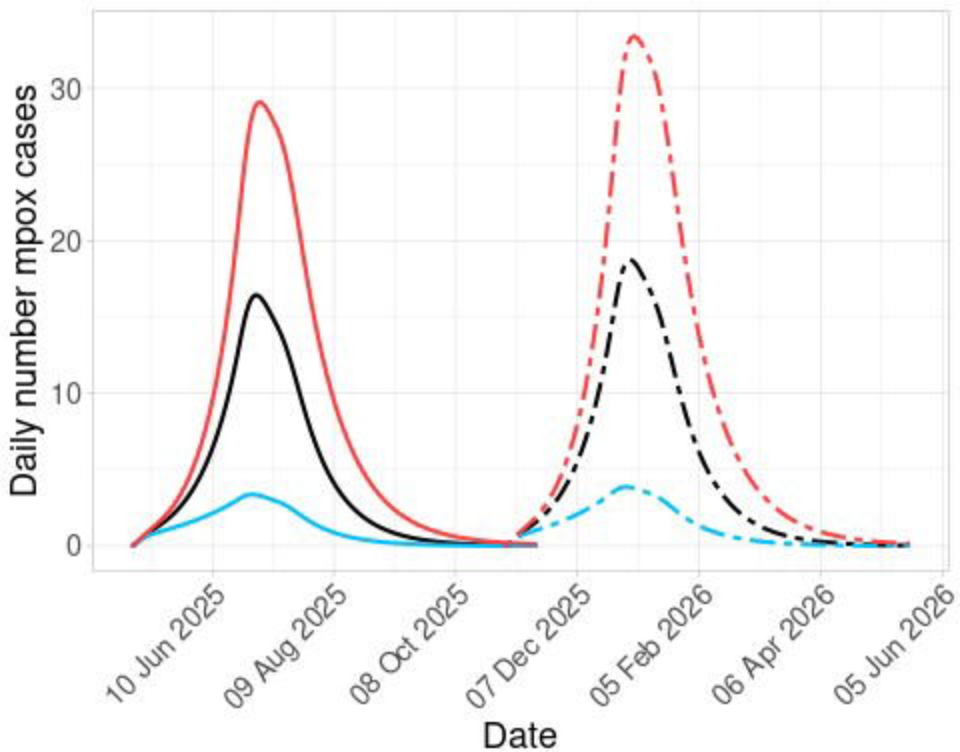
**Introductions**

- 1 May 2025
- - 1 Nov 2025

**Vaccination**

- 3,000 vaccinations Aug-Oct 2024
- - 3,000 vaccinations Feb-Apr 2025
- 30,000 vaccinations Aug-Oct 2024
- - 30,000 vaccinations Feb-Apr 2025
- No vaccinations





**Introductions**

— 1 May 2025

- - 1 Nov 2025

**Subclade**

— As subclade IIb

— Higher hospitalization rate

— Higher infectivity