

1 **Assessing the performance and suitability of wastewater based-surveillance for SARS-**  
2 **CoV-2 RNA in public schools**

3 **Authors:**

4 Nicole Acosta<sup>1\*</sup>, Alex Buchner Beaudet<sup>1\*</sup>, Paul Westlund<sup>2</sup>, Jia Hu<sup>3,4</sup>, Navid Sedaghat<sup>5</sup>, Puja  
5 Pradhan<sup>1,5</sup>, Lawrence Man<sup>1,5</sup>, Jordan Hollman<sup>6</sup>, María A. Bautista<sup>5</sup>, Barbara J. Waddell<sup>1</sup>, Janine  
6 McCalder<sup>5</sup>, Matthew Penney<sup>1</sup>, Jianwei Chen<sup>5</sup>, Jon Meddings<sup>7</sup>, Gopal Achari<sup>8</sup>, M. Cathryn Ryan<sup>6</sup>,  
7 Dany Breton<sup>9</sup>, Elizabeth A. Wood<sup>9</sup>, Jason L. Cabaj<sup>3,4,10</sup>, Rhonda C. Clark<sup>5</sup>, Kevin Frankowski<sup>11</sup>,  
8 Casey R.J. Hubert<sup>5</sup>, and Michael D. Parkins<sup>1,7,12^</sup>

9 **\*Authors are declared to be co-first authors**

10 **Author Affiliations:**

11 <sup>1</sup> Department of Microbiology, Immunology and Infectious Diseases, University of Calgary,  
12 3330 Hospital Drive NW, Calgary, Alberta, T2N 4N1, Canada

13 <sup>2</sup> C.E.C. Innovations, Calgary, Alberta, Canada.

14 <sup>3</sup> Department of Community Health Sciences, University of Calgary, 3280 Hospital Drive NW,  
15 Calgary, Alberta, T2N 4Z6, Canada

16 <sup>4</sup> O'Brien Institute for Public Health, University of Calgary, Calgary, 3280 Hospital Dr NW,  
17 Calgary, Alberta, T2N 4Z6, Canada

18 <sup>5</sup> Department of Biological Sciences, University of Calgary, 2500 University Drive NW,  
19 Calgary, Alberta, T2N 1N4, Canada

20 <sup>6</sup> Department of Geosciences, University of Calgary, 2500 University Drive NW, Calgary,  
21 Alberta, T2N 1N4, Canada

22 <sup>7</sup> Department of Medicine, Cumming School of Medicine, University of Calgary, 3330 Hospital  
23 Drive NW, Calgary, Alberta, T2N 4N1, Canada

24 <sup>8</sup> Department of Civil Engineering, University of Calgary, 2500 University Drive NW, Calgary,  
25 Alberta, T2N 1N4, Canada

26 <sup>9</sup> Calgary Board of Education, Education Centre 1221 - 8 Street SW, Calgary, Alberta, T2R 0L4,  
27 Canada

28 <sup>10</sup> Provincial Population & Public Health, Alberta Health Services, 3030 Hospital Drive NW,  
29 Calgary, Alberta, T2N 4W4, Canada

30 <sup>11</sup> Advancing Canadian Water Assets, University of Calgary, 3131 210 Ave SE, Calgary,  
31 Alberta, T0L 0X0, Canada

32 <sup>12</sup> Snyder Institute for Chronic Diseases, University of Calgary, 3330 Hospital Drive NW,  
33 Calgary, Alberta, T2N 4N1, Canada

34

35 **^Corresponding Author:**

36 Michael D. Parkins, MD MSc

37 Professor, Department of Medicine and Microbiology, Immunology & Infectious Diseases,  
38 University of Calgary.

39 Postal address: 3330 Hospital Drive, NW, Calgary, Alberta, T2N 2V5. CANADA.

40 e-mail: [mdparkin@ucalgary.ca](mailto:mdparkin@ucalgary.ca)

41 Phone: 403-210-7913, Fax: 403-270-2772.

42

43

44 **Abstract**

45 Municipal wastewater-based surveillance (WBS) programs for SARS-CoV-2 were valuable tools  
46 for epidemiological modelling and informing COVID-19 health policy during the pandemic. We  
47 conducted a “near to source” study to assess the capacity and performance of SARS-CoV-2  
48 WBS programs in schools relative to municipal wastewater treatment plants (WWTP). Only  
49 4/17 schools screened had plumbing systems that were amenable to WBS. From December 2020  
50 - March 2021 composite wastewater collected 2X/week from four schools and three municipal  
51 WWTP were assessed for SARS-CoV-2 and fecal biomarkers. Schools had lower rates of  
52 successful sample collection relative to WWTP (44.7% vs 100%,  $p < 0.001$ ). In a time of low  
53 COVID-19 activity, 13/64 of school samples were positive of SARS-CoV-2-N1 vs 100% of  
54 WWTP. SARS-CoV-2-N1 detected in school wastewater associated with and preceded  
55 clinically identified infections, but did not correlate with rates of overall absenteeism. Notably  
56 levels of SARS-CoV-2-N1 and fecal biomarkers were markedly lower in wastewater from  
57 schools relative to WWTP. While our SARS-CoV-2 WBS program in schools did generate a  
58 leading signal relative to clinical disease, the significantly lower levels of SARS-CoV-2 and  
59 fecal biomarkers suggests that toileting habits of children who may avoid defecation at school  
60 adversely impact school-based WBS of targets shed in feces.

61 **Keywords:** wastewater, wastewater-based surveillance, SARS-CoV-2, school, nodal, near-  
62 source

63

64 **Abbreviations:**

65 BCoV: Bovine coronavirus

66 PMMoV: Pepper mild mottle virus

67 SARS-CoV-2: Severe Acute Respiratory Syndrome Coronavirus 2

68 WWTPs: wastewater-treatment plants

69 WBS: wastewater-based surveillance

70 TS: Total solids

71 TSS: Total suspended solids

72 TDS: Total dissolved solids

73

## 74 **Introduction**

75 A silver lining of the COVID-19 pandemic has been the rapid evolution of healthcare innovation  
76 to meet the needs of a global pandemic. One technology in particular, wastewater-based  
77 surveillance (WBS), has proven especially useful in tracking and understanding the spread of  
78 disease <sup>1</sup>. Wastewater measured SARS-CoV-2 RNA strongly correlates with clinical case  
79 burden across a range of scales, acting as an early warning system to inform health policy <sup>2,3</sup>.  
80 Indeed, WBS serves as leading indicator (4-6 days) to clinically confirmed COVID-19 disease <sup>4</sup>,  
81 and strongly correlates with hospitalizations, ICU admissions and deaths across whole  
82 communities. This approach is viable because SARS-CoV-2 RNA is shed in the stool of most  
83 symptomatic and asymptomatic infected individuals very early in the course of infection <sup>5</sup>.

84 WBS programs for SARS-CoV-2 have evolved to become a *de facto* standard and now exist in  
85 almost every major municipality, leveraging samples collected at local wastewater treatment  
86 plants (WWTPs) to understand community disease patterns<sup>6</sup>. More granular monitoring  
87 programs, focused on individual neighborhoods have similarly demonstrated strong correlations  
88 with clinically diagnosed cases – with the added potential of understanding community factors  
89 related to COVID-19 <sup>7-10</sup>. More granular yet, “near to source” WBS focuses on specific buildings  
90 and facilities to establish the limits of this technology <sup>11,12</sup>. Areas that were initially explored  
91 include those such as hospitals <sup>13,14</sup> and long-term care facilities <sup>15,16</sup>, where the consequences of  
92 outbreaks are profound for both the higher risk resident populations and for the ability to disrupt  
93 the care these critical services provide to the broader community. One area that has been  
94 explored only to a limited degree is the potential for close to source monitoring in public schools.

95 COVID-19 transmission in pediatric and adolescent populations represents a contentious topic in  
96 epidemiological research<sup>17-20</sup>. Early works concluded that children were responsible for less than  
97 5% of total COVID-19 cases in general populations<sup>21</sup>. However, the tendency for children and  
98 adolescents to exhibit asymptomatic or pauci-symptomatic disease meant that cases were likely  
99 to be initially under reported<sup>17,22,23</sup>. Later studies have since demonstrated that children are a  
100 main source of viral transmission within family clusters<sup>24</sup>. Schools increase transmission  
101 potential between unrelated families due to the concentration of students from different  
102 households.

103 In this study, we initiated a ‘near to source’ pilot program, exploring the ability and viability of  
104 SARS-CoV-2 WBS to detect COVID-19 in public schools and assessed this relative to overall  
105 community disease activity as measured at municipal WWTP. To achieve this aim, we first  
106 developed a framework for screening potential schools to identify suitable candidates. Schools  
107 that met the required framework criteria then enrolled in a four-month observational study  
108 whereby SARS-CoV-2 RNA measured in wastewater was compared with clinically identified  
109 cases within the school, and across the broader community. As SARS-CoV-2 is merely the tip of  
110 the iceberg for potential WBS measured analytes of public health importance (i.e. other  
111 communicable infections, drugs and toxins) understanding how it can perform (and  
112 underperform), in schools is essential.

## 113 **Results**

### 114 **Selection of Participating Schools and Wastewater Collection Performance**

115 At the end of 2020, we undertook a study to assess the feasibility of schools to participate in a  
116 longitudinal WBS program for SARS-CoV-2. Of the 17 schools that were screened, ultimately

117 only four schools met all of the criteria for a site based near-source WBS pilot program  
118 (Supplementary Fig. 1). Detailed characteristics of the four selected schools are included in  
119 Supplementary Table 1. Between December 2020 and March of 2021, four schools were  
120 sequentially onboarded with the goal of achieving at least three months of sampling from each  
121 school. The timing of the study coincided with the end of ‘wave-2’ in Alberta, and was  
122 characterized by the wild type SARS-CoV-2 variant<sup>25</sup>. Of the total number of samples that were  
123 sought for collection (i.e. during regular school days), 76.5% (64/79) were successfully collected  
124 from four schools (five sites) during the study. As schools were sequentially brought online, the  
125 number of samples available from each site differed. Unsuccessful collection of a composite  
126 wastewater sample was attributed to a range of issues including ragging (3/15 failures), low  
127 sanitary flow (9/15 failures), and ambient temperature excursions (3/15 failures). The occurrence  
128 of these events did not occur disproportionately at any specific site ( $p=0.140$ , Fisher's exact test)  
129 (Supplementary Table 1). During this time 66/66 (100%) twice weekly samples were collected  
130 in parallel from the three municipal WWTPs. Successful collection occurred at a higher rate in  
131 municipal WWTPs than schools (100% vs 44.7%),  $p<0.001$ . WWTPs samples were not subject  
132 to ragging, low sanitary flow, or ambient temperature excursions.

133

### 134 **Identification of SARS-CoV-2 RNA signal in school wastewater and its relation to overall** 135 **community activity**

136 Only thirteen wastewater samples from schools (of 64; 20.3%) (Table 1) were positive for the  
137 SARS-CoV-2 N1 target. Six of the 64 school wastewater samples (9.4%) were also identified as  
138 positive for the SARS-CoV-2-N2 target, and no sample positive for N2 was not also positive for  
139 N1. School samples that were positive for N2 had higher amounts of SARS-CoV-2 N1 RNA as

140 indicated by a lower cycle threshold (Cq) value (37.8 vs 40,  $p=0.0003$ ). The median Cq value for  
141 positive samples was 37.8 (IQR 36.6-39) for the N1 target and 40.6 (IQR 40.1-42) for the N2  
142 target. Conversely, the lowest Cq value observed was 34.7 and 39.1 for N1 and N2 respectively.  
143 A Spearman correlation test between Cq of the N1 and N2 RT-qPCR assays within the same  
144 wastewater samples yielded a strong positive correlation ( $r=0.632$ ,  $p<0.0001$ ).

145 To understand SARS-CoV-2 burden in schools relative to the larger community from which they  
146 derived, we compared school wastewater data to that across all of the city of Calgary's via  
147 samples collected at WWTPs. During the study period, 66 twice-weekly samples were collected  
148 from Calgary's three WWTP (23/per). All WWTPs samples were positive for SARS-CoV-2 N1  
149 target and all but one for N2. Compared to schools, municipal wastewater was much more likely  
150 to be positive for SARS-CoV-2 N1 (66/66 (100%) vs 13/64 (20%),  $p<0.0001$ ). Furthermore,  
151 school SARS-CoV-2 RNA levels were significantly lower than WWTP at a time of low  
152 community activity regardless of the target that was evaluated: N1; median Schools 0 (IQR: 0-0)  
153 copies/mL vs median WWTP 126 (IQR: 67.8-202) copies/mL and N2; median Schools 0 (IQR:  
154 0-0) copies/mL vs median WWTP 66.8 (IQR: 29.2-131) copies/mL for (Fig. 1A). Similar trends  
155 were observed when SARS-CoV-2 concentration was normalized by the PMMoV signal in the  
156 samples to potentially control for fecal burden: N1; median Schools 0 (IQR:  $0-8.5 \times 10^{-5}$ )  
157 copies/copies vs median WWTP  $1.2 \times 10^{-2}$  (IQR:  $6.3 \times 10^{-3} - 2.4 \times 10^{-2}$ ) copies/copies,  $p<0.0001$   
158 and N2; median Schools 0 (IQR: 0-0) copies/copies vs median WWTP  $4.8 \times 10^{-3}$  (IQR:  $2.1 \times 10^{-3}$   
159  $- 2 \times 10^{-2}$ ) copies/copies,  $p<0.0001$  (Fig. 1B). Even when we excluded those school samples  
160 that were negative for SARS-CoV-2 RNA for either the N1 or N2 target, both raw school data  
161 and normalized data were markedly lower than WWTP (data not shown).

## 162 **Clinical Case Information**



163 Demographics of the included schools are presented in Table 2. Clinical case information on  
164 COVID-19-confirmed, related- and unrelated- infections and overall absenteeism were collected  
165 from January 2021. The size of the student and staff population of each school varied throughout  
166 the monitoring period (Table 2) as exposures, cases (prompting exclusions) and other illnesses  
167 affected their populations (Supplementary Fig. 2). Between January 2021 and March 2021, only  
168 eighteen clinically confirmed COVID-19 cases were documented amongst students and staff at  
169 the four participating schools in Calgary. The weekly absenteeism rates (due to confirmed  
170 COVID-19, COVID-19 related or unrelated illnesses) ranged from 0 to 0.44%, 0.04 to 27.3%  
171 and 0.19 to 16.7%, respectively (Supplementary Table 2). Absenteeism rates due to COVID-19  
172 confirmed disease did not significantly change through the three-month study period ( $p=0.290$ ,  
173 Kruskal-Wallis test). Confirmed cases represented a very small proportion of student absences  
174 [median percent of COVID-19 confirmed 0.09 (0-0.183) vs any other non-COVID-19 reason  
175 9.32(7.94-12.3),  $p < 0.0001$ ], Wilcoxon matched-pairs signed rank test) on account of the  
176 rigorous exclusion policy intended to reduce secondary spread<sup>26-28</sup>.

### 177 **SARS-CoV-2 RNA in school wastewater and its relation to clinical case burden**

178 Comparative analysis of wastewater measured SARS-CoV-2 RNA and clinically confirmed  
179 cases in schools started in January 2021 using complementary approaches. We looked to  
180 determine if there was a correlation between a positive SARS-CoV-2 N1 RNA signal ( $C_q < 40$ )  
181 measured in a specific school and the occurrence of clinically confirmed cases in the same  
182 school over the ensuing days. We were able to confirm a statistical correlation using the Fisher's  
183 exact test between SARS-CoV-2 RNA detected in school wastewater and clinical cases that were  
184 confirmed in the subsequent week (Table 3). Whereas this was statistically significant when

185 wastewater samples were collected at intervals longer than 1-3 days preceding clinical cases,  
186 there was only a trend at shorter intervals preceding clinical case occurrence.

187 In 9/13 incidents where a school wastewater sample was identified as positive for SARS-CoV-2  
188 RNA N1 signal (Fig. 2), another positive sample followed for the next closest sampling date 9/13  
189 (69.2%) vs 4/53 (7.55%) ( $P < 0.0001$ , Fisher's exact test). In the other four positive samples, the  
190 sampling dates immediately adjacent to the positive sample date did not have sufficient sample  
191 volume collection for analysis, therefore we cannot comment on the trend. Given the exclusion  
192 of students once COVID-19 was confirmed, this may represent asymptomatic secondary cases  
193 identified through WBS.

194 We then sought to understand if overall attendance (i.e., students and teachers) amongst the four  
195 schools correlated with wastewater detected SARS-CoV-2 RNA in school wastewater. When we  
196 sought to determine if correlations between overall absenteeism (assessed at  $>5\%$  and  $>10\%$ ) at  
197 any individual school with the likelihood of having a positive SARS-CoV-2 N1 signal ( $C_q < 40$ )  
198 in that school using the Fischer's exact test showed interdependence between absenteeism and  
199 positive SARS-CoV-2 signal. No evidence of a statistical association was found at any of the  
200 four schools measured through five sites; School #1, School #2A, School #2B, School #3, and  
201 School #4 when school absenteeism was  $>5\%$  ( $p > 0.999$ ,  $p = 0.088$ ,  $p > 0.999$ ,  $p > 0.999$ , and  $0.625$   
202 respectively) or  $>10\%$  ( $p = 0.429$ ,  $p = 0.516$ ,  $p > 0.999$ ,  $p > 0.999$ , and  $p = 0.375$  respectively).

203 Finally, we sought to better understand school attendance at each site in the context of overall  
204 community viral load as determined from a city-wide N1 SARS-CoV-2 signal across each of  
205 Calgary's three wastewater treatment plants (Fig. 3A). Using Spearman correlation test we did  
206 not observe a correlation between overall attendance (within 2 days, owing to the frequency of  
207 sample collection) for any individual school and the SARS-CoV-2 N1 city-wide aggregate

208 wastewater value for the City of Calgary (Fig. 3B) (Spearman's  $r = 0.136$ , CI:  $-0.419 - 0.616$ ,  $p =$   
209  $0.629$ ).

## 210 **Unique Features of School-based WBS**

211 Sources more proximal in the sewershed have greater potential for molecular inhibition from  
212 chemical and other molecular factors. To assess if differences might explain our data, we  
213 compared recovery of spiked-BCoV into wastewater from the schools and WWTPs samples.  
214 There was a small but statistically significant difference in the spiked external positive control  
215 BCoV median copy numbers between schools and WWTPs (694,914 [IQR: 55,703- 1,675,777]  
216 copies/mL vs 1,217,451 [IQR: 774,211- 1,934,018],  $p = 0.005$ , Mann Whitney test)  
217 (Supplementary Fig. 3A). However, school 2B was a significant outlier and had significantly  
218 lower detection ( $\sim 10,000$ -fold) of BCoV (Supplementary Table 3) suggesting the potential for  
219 substantial signal interference (Supplementary Fig. 3B). When we removed site 2B as a  
220 significant outlier, school median BCoV did not differ from the WWTPs (Supplementary Fig.  
221 3C).

222 To assess for differences in fecal contributions at each school, and therefore the potential to  
223 detect fecal shed WBS targets relative to the community at large we took multiple  
224 complementary approaches. The human fecal biomarker, PMMoV, was much lower in school  
225 samples than in WWTP (School median 2,178 [IQR: 28.1 – 8,213] copies/mL vs WWTP median  
226 13,029 [IQR: 5,489 – 19,556],  $p < 0.0001$ , Mann Whitney test) (Supplementary Fig. 4A-B). As  
227 school site 2B remained a significant outlier (Supplementary Table 3), we analyzed this  
228 separately as well with the same trends observed (School median 4054 [IQR: 1,853 – 11,092]  
229 copies/mL vs WWTP median 13,029 [IQR: 5,489 – 19,556],  $p = 0.0003$ , Mann Whitney test)  
230 (Supplementary Fig. 4C). When 2B site was excluded, the median school PMMoV burden

231 remained 3.2-fold lower than the average WWTP, suggesting a lower fecal content. Chemical  
232 analysis demonstrated that total suspended solids (TSS) and total volatile suspended solids  
233 (TVSS) in wastewater from schools was significantly lower than WWTP (Supplementary Fig. 5).

## 234 **Discussion**

235 To understand the potential for near-source WBS in schools, we analyzed the spatial and  
236 temporal differences among SARS-CoV-2 among four large public schools in the city of  
237 Calgary. The data collected in this study suggests that, despite the sporadic patterns of  
238 wastewater flow in individual buildings of visitation such as schools, the presence of SARS-  
239 CoV-2 RNA can be identified. Recently groups have confirmed that the incidence of SARS-  
240 CoV-2 in wastewater of schools, corresponds with the overall community disease burden <sup>12,29-31</sup>.  
241 Our group took this one step further and compared clinical disease occurring in student/staff  
242 population – even at a period of low COVID-19 community transmission – with WBS,  
243 identifying that indeed this signal correlated with WBS. By augmenting site specific-WBS with  
244 an overall community SARS-CoV-2 WBS through municipal WWTP enables a comprehensive,  
245 holistic perspective. This complements recent publications from other school-based WBS  
246 programs from countries around the world including UK, USA, Czech Republic, Canada, and  
247 Thailand<sup>12,29-36</sup>. Some of those studies found that the amount of SARS-CoV-2 RNA signal in  
248 school wastewater correlated with the number of incident COVID-19 cases <sup>30,31</sup>, and in some  
249 instances this provided a leading signal <sup>12,33,36</sup>. In contrast, other school WBS studies reported  
250 only moderate correlations between SARS-CoV-2 RNA in wastewater and clinical cases of  
251 COVID-19, specifically during periods of low COVID-19 prevalence<sup>34</sup>. Here we identified  
252 during a period of low community activity that WBS, performed twice weekly, provided a 1-3 to  
253 1-5 lead time relative to clinical case diagnoses. This is similar to Kappus-Kron et al., who

254 identified a one day lead time relative to clinical diagnoses in a weekly sampling program at a  
255 school of ~600 students in New York State <sup>36</sup>.

256 Interestingly, WBS in other near source settings such as colleges, university campuses and  
257 residence halls have generally shown a stronger relationship with clinical diseases in those sites  
258 <sup>37-42</sup>. One likely explanation for this discordance likely relates to human factors such as toileting  
259 <sup>7,33,43</sup>. As SARS-CoV-2 is almost exclusively shed in the stool <sup>44</sup>, successful monitoring is  
260 dependent on toileting behavior of the population using the facilities. This is a critical barrier  
261 for WBS programs in schools. An average of 63% of students between the ages of 6 and 16  
262 years refuse to defecate at schools<sup>45</sup> and this avoidance behavior is most pronounced in high  
263 school students. This is supported by significantly lower evidence of fecal biomarkers including  
264 PMMoV, TSS and TVSS observed in schools (and in particular high schools) relative to  
265 community signals overall. Unfortunately, this limits the utility of school WBS programs for  
266 fecal shed targets – such as SARS-CoV-2– and represents a novel observation in this study. This  
267 would therefore likely impact pathogens such as Influenza, Respiratory Syncytial Virus (RSV),  
268 and viral causes of gastroenteritis but not measles and other viruses shed in high amounts in  
269 urine, which have all been previously identified in sewage <sup>46-49</sup>.

270

271 Importantly, school-based WBS applications come with significant technical challenges. Only  
272 4/17 (24%) of schools screened for potential participation had infrastructure that enabled a  
273 comprehensive program monitoring the entire school from  $\leq 2$  sites while excluding wastewater  
274 from other community inputs. While multiple complementary devices could in many instances  
275 overcome this short coming, they would result in significant increase in the work and costs  
276 associated with WBS <sup>33</sup>. Once installed, school-WBS devices did not successfully procure

277 samples at the same rates as WWTP and were more likely subject to complications requiring  
278 specific maintenance (i.e. ragging and blocking). These challenges have been observed in other  
279 near to source programs and highlight how fortunate municipal based monitoring programs are  
280 to have experts on site for autosampler maintenance and sample management.

281 Several limitations of note are to be considered in regard to this work. This study was conducted  
282 during the trough of Wave-2 - at the end of the 2020-2021 winter season and early spring of  
283 2021<sup>50</sup>, during a time of very low overall community COVID-19 activity<sup>7</sup>. The low incidence  
284 were in response to the strict public health measures (included province-wide mask mandate,  
285 encouragement of work-from-home, and prohibition of social gatherings<sup>51</sup>) that were  
286 implemented in order to resume in-person learning in schools after the winter holiday break.  
287 During higher incidence times, the performance may have been different. While composite  
288 samples were collected differently for schools vs WWTP (8 vs 24-hours), the limitation of  
289 school WBS to hours of attendance would have increased its potential to capture defecation  
290 events, which it did not.

## 291 **CONCLUSION**

292 SARS-CoV-2 WBS performed in schools is capable of identifying incident cases of COVID-19  
293 before they occur. However, significant limitations exist. Most schools do not have a plumbing  
294 network that enables single/dual source surveillance, and sample collection is challenging  
295 relative to conventional WWTP programs. Furthermore, as students are less likely to defecate at  
296 school, the capacity for this technology to effectively be used for SARS-CoV-2 and other fecal  
297 shed WBS targets is reduced.

298

## 299 **Methods**

### 300 **Public school and community wastewater sampling**

301 In partnership with the Alberta Health Services (AHS) Medical Office of Health, and a Calgary-  
302 based school board, we first sought to identify candidate schools potentially amenable to WBS.  
303 Provisional inclusion criteria included a population of  $\geq 500$  students and a willing  
304 administration. The process of identifying appropriate sampling sites included a series of  
305 sequential screenings (Supplementary Fig. 1). Sites were excluded only after failing screening.  
306 The first step of screening involved assessing each building's sewer network mechanical  
307 drawings - necessary to determine if plumbing access ports allowed for wastewater collection  
308 from all toilets, sinks and other source locations in the building from  $\leq$  two sites, while  
309 simultaneously avoiding external sources from the surrounding neighborhoods. The second  
310 screening step involved a physical evaluation of potential plumbing access ports. Acceptable  
311 sewer access ports could not pose safety hazards or a hindrance to student/faculty activity during  
312 installation or ongoing sample collections/maintenance. The final screening was an extensive in-  
313 person physical review of internal plumbing of each facility. This involved checking the relevant  
314 infrastructure for any obstructions or unavoidable structural hindrances and identifying where  
315 wastewater could be comprehensively and safely be collected. If within building collection was  
316 not possible, we reviewed municipal access points to see if they could effectively substitute.  
317 C.E.C autosamplers were deployed at the sewer access port(s) of each school deemed most  
318 appropriate, which are detailed in Supplementary Table 1. Autosamplers were programmed to  
319 operated continuously. Collection from school #3 was impeded by a physical obstruction  
320 identified after passing all steps, however, the outdoor municipal sewer access port which  
321 comprehensively and exclusively served this building was available. A wastewater sampling

322 routine was developed in which wastewater was collected only during times in which students  
323 and faculty were present at schools. Details of individual sampler programming is available in  
324 the Supplementary Table 1. This study was conducted after receiving approval from the  
325 University of Calgary's Conjoint Health Research Ethics Board (REB20-1544).

326 To compare the burden of SARS-CoV-2 in school populations relative to the community, raw  
327 wastewater from each of Calgary's three wastewater treatment plants (WWTP) was collected up  
328 to three times per week by City of Calgary Water Services staff as previously described<sup>7</sup>. Briefly,  
329 ISCO 5800 and ISCO 6712 portable autosamplers were programmed to collect and store 24-hour  
330 composite community samples, in which WWTP-1 samples were flow-weighted and samples  
331 from WWTP-2 and WWTP-3 were time-weighted to create a single city-wide metric (see below  
332 for details)<sup>7</sup>.

333 School and WWTPs samples were transported to the University of Calgary Advancing Canadian  
334 Water Assets (ACWA) laboratory on ice for sample concentration and nucleic acid extraction.  
335 Samples that were not successfully collected were categorized based on complication type:  
336 ragging (abundance of fibrous material blocked sampling inlet tubing), low sanitary flow, and  
337 temperature excursions (defined as freezing of sample or malfunction of sampler due to ambient  
338 temperature) detailed in Supplementary Table 1.

### 339 **Sample concentration and nucleic acid extraction**

340 Wastewater samples were processed in real-time following a previously described  
341 methodology<sup>13</sup>. Briefly, each sample was thoroughly agitated to ensure maximum homogeneity,  
342 then an aliquoted of 40 mL was spiked with 200 µl of a Bovine coronavirus (BCoV) exogenous  
343 control (final concentration of 2500 TCID<sub>50</sub>/ml) and then subjected to the sample processing



344 and nucleic acid purification steps of the modified 4S (Sewage, Salt, Silica and SARS-CoV-2)  
345 Silica Column purification method<sup>13,52</sup>. An extraction blank (i.e., UltraPure™ DNase/RNase-  
346 Free Distilled Water (Invitrogen)) was included in each batch of processed samples. Extracted  
347 nucleic acids were transported on dry ice to the Health Sciences Center, to minimize the potential  
348 for contamination and for subsequent molecular analysis. Residual wastewater samples were  
349 stored at -20°C before chemical analysis.

### 350 **Molecular analysis**

351 Gene targets assessed by RT-qPCR included; the SARS-CoV-2 nucleocapsid gene (N1 and N2),  
352 the exogenous control BCoV, and the fecal biomarker PMMoV (a fecal burden biomarker),  
353 which were all quantified using a QuantStudio-5 Real-Time PCR System (Applied Biosystems)  
354 using the same protocols described previously<sup>13</sup>. Each RT-qPCR was performed in triplicate as  
355 per MIQE guidelines (Bustin et al., 2009). Samples were classified as positive for SARS-CoV-2  
356 if either the N1 or N2 gene targets yielded a threshold quantification cycle (Cq) less than 40  
357<sup>13,53,54</sup>. City-wide measurement of SARS-CoV-2 burden (copies/day) in wastewater from  
358 Calgary's three WWTP was calculated as the sum of the mass flux from each of the three  
359 WWTPs, where it is the product of the SARS-CoV-2 concentration (C, copies/ml) and the daily  
360 volumetric flow<sup>7</sup>. PCR inhibition was assessed using a spike and dilution method as previously  
361 described<sup>7</sup> using a representative 40 µL purified nucleic acid sample derived from the school  
362 wastewater (School #2B) extracted without the addition of the internal control (i.e., BCoV) and a  
363 control sample of Ultrapure™ DNase/RNase-Free Distilled water (ThermoFisher). Wastewater  
364 samples with a  $\geq 2$ -Cq delay relative to the controls were considered to have evidence of RT-  
365 qPCR inhibition<sup>55</sup>.

### 366 **Chemical Analysis**

367 Calculation of total Solids (TS), total suspended solids (TSS), total volatile suspended solids  
368 (TVSS) and total dissolved Solids (TDS) in a wastewater sample was performed following  
369 standard methods<sup>56</sup>. Briefly, to determine TS, homogenized 50 mL aliquots were placed in pre-  
370 weighed crucibles and dried at 104 °C for 12 hours to evaporate liquid content. Then, the residue  
371 after the drying process was cooled, weighed at room temperature yielding TS. To determine  
372 TSS, homogenized 20 mL aliquots were filtered through 1.5 µm pore size Grade 934-AH® RTU  
373 glass microfiber filters (Whatman). Then, the residue retained on the filter was dried at 104 °C  
374 for 12 hours and weighed to calculate TSS. To determine TVSS, the residue from the TSS step  
375 was dried again at 550°C for two hours to drive off volatile solids in the sample. Then, the  
376 residue after the second drying process was cooled, weighed at room temperature and TVSS was  
377 calculated. Finally, to determine TDS the filtrate from the TSS step was evaporated and dried at  
378 104 °C for 12 hours, and the residue was weighed. Chemical analysis of the WWTPs samples  
379 was performed by the staff of City of Calgary following the same standard methods.

### 380 **Clinical case data**

381 All clinically confirmed cases of COVID-19 of students attending each school were identified in  
382 real-time by a single Provincial health provider, AHS using established protocols and reported to  
383 each school by the Office of the Medical Officer of Health of AHS. Daily aggregate case counts  
384 including new/incident cases of COVID-19 in students were shared with the study team.

385 Individuals with confirmed COVID-19 by public health order were excluded from attending  
386 school for 10 days after their symptoms began. At the time of the study, if a case was identified  
387 in any individual class, all other class members were excluded from attending school for the next  
388 14 days. Daily aggregate attendance counts for student/staff were recorded and daily  
389 student/staff enrollment were shared with the study team.

## 390 **Statistical Analysis**

391 Spearman correlation tests were used to test the correlation between cycle threshold (Cq) values  
392 of N1 and N2 region detection with our RT-qPCR assays within the same wastewater samples.  
393 Differences in SARS-CoV-2 RNA N1 & N2, BCoV and PMMoV between schools and  
394 communities (WWTPs) were determined using the Mann Whitney test. Dunn's Multiple  
395 Comparison Test was used to determine which specific school sites differed from others for  
396 WBS targets. Differences in student absenteeism rates due to confirmed COVID-19 cases versus  
397 other reason was determined using the Wilcoxon matched-pairs signed rank test. To compare the  
398 student absenteeism percentages due to confirmed COVID-19 cases across the weeks for all the  
399 schools Kruskal-Wallis test was performed. Cases confirmed within 1 to 5 days before/after  
400 wastewater sample collection were compared using Fischer tests to assess if positive school  
401 wastewater associated with confirmed cases in schools. To assess if positive cases were  
402 associated with school absenteeism, we assessed the correlation between the SARS-CoV-2  
403 wastewater-N1 (Calgary) with the overall attendance percentage using the Spearman correlation  
404 test. Additionally, we conducted a series of comparisons between absenteeism with the  
405 likelihood of getting a positive SARS-CoV-2 wastewater result at each school using the Fischer  
406 test. Statistical analyses were done using GraphPad's Prism-10 software.

## 407 **Acknowledgements**

408 The investigators are grateful to the administration, staff, students and facility operators of each  
409 of the schools screened, and especially those four ultimately participating in WBS pioneering.  
410 The investigators are grateful to all staff of City of Calgary and especially Water Services, and  
411 the participating school board for their participation and support.

412 **Funding Statement**

413 This work was supported by grants from the Canadian Institute of Health Research and from  
414 Alberta Health.

415 **Data availability**

416 All data generated or analyzed during this study are included in this published article (and its  
417 Supplementary Information files).

418 **Competing interests**

419 The author(s) declare no competing interests.

420

421 **TABLES**

422 **Table 1.** SARS-CoV-2 positive wastewater samples identified from schools <sup>a</sup>

<b>Site Name</b>	<b>Number of students with Confirmed COVID-19 Diagnosis</b>	<b>Number of WW Samples Positive for SARS-CoV-2 RNA</b>	<b>Date of Positive SARS-CoV-2 RNA Reading (DD-MM-YYYY)</b>	<b>Mean N1 Detected Copies/mL</b>	<b>Mean N2 Detected Copies/mL</b>
<b>School #1</b>	3	3	01/02/2021	4.84	0
			10/02/2021	9.24	3.46
			01/03/2021	0.72	0
<b>School #2A</b>	11	7	13/01/2021	1.09	1.08
			18/01/2021	0.401	0.945
			20/01/2021	0.497	0
			22/02/2021	7.14	9.29
			24/02/2021	5.38	1.07
			22/03/2021	8.94	1.91
			24/03/2021	25.9	0
<b>School #3</b>	3	1	24/02/2021	3.58	0
<b>School #4</b>	1	2	08/03/2021	0.478	0
			10/03/2021	0.601	0

423 <sup>a</sup> Calgary, Alberta, Canada wastewater samples collected from four different schools over study  
 424 period. Each site was monitored for a different timespan within the study dates. Wastewater  
 425 samples identified as positive for SARS-CoV-2 RNA using N1 and N2 loci RT-qPCR assays are  
 426 shown (see methods for definition). School #2B not included due to lack of any positive  
 427 wastewater samples.

428

429

430 **Table 2.** Demographics and characteristics of schools monitored in the city of Calgary.

<b>School</b>	<b>#1</b>	<b>#2</b>	<b>#3</b>	<b>#4</b>
<b>Category (Grades)</b>	Elementary and Middle School (K-9)	High School (10-12)	High School (10-12)	High School (10-12)
<b>Daily Student Population (range)</b>	552-779	1158-1335	1285-1364	1354-1558
<b>Daily Staff population (range)</b>	69-78	90-103	104-110	100-108
<b>Average Attendance Rate (%)</b>	87.0	92.0	86.5	92.3
<b>Wastewater Treatment plant catchment</b>	WWTP 1	WWTP 1	WWTP 1	WWTP 2 and 3

431 WWTP: wastewater treatment plant

432

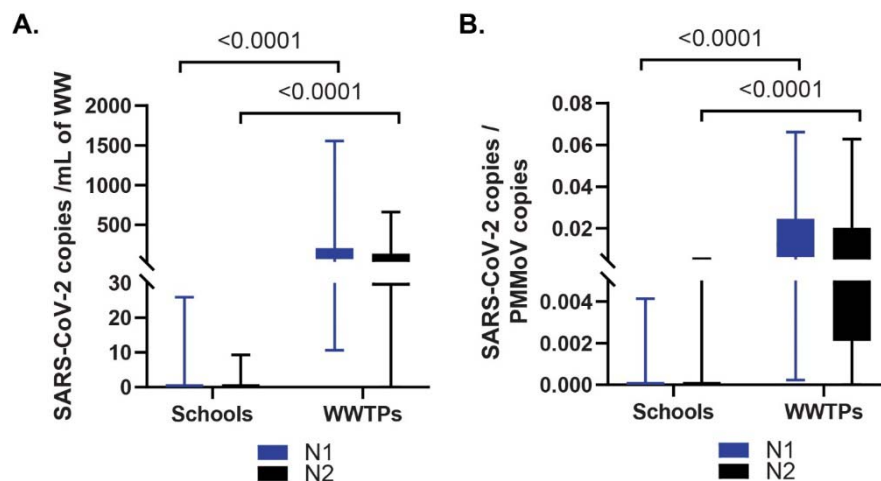
433 **Table 3.** SARS-CoV-2 RNA signal detected in school wastewater and the occurrence of  
434 confirmed COVID-19 cases in the following week.

	<b>Confirmed Cases and a positive WBS-signal</b>	<b>Confirmed Cases and a negative WBS-signal</b>	<b>Risk Ratio</b>	<b>P-value</b>
<b>1 – 2 days</b>	6/13 (46%)	15/51 (29%)	1.57 (0.76-3.24)	0.205
<b>1 – 3 days</b>	9/13 (69%)	15/51 (29%)	2.35 (1.34-4.12)	<b>0.011</b>
<b>1 – 4 days</b>	9/13 (69%)	16/51 (31%)	2.21 (1.28-3.80)	<b>0.015</b>
<b>1 – 5 days</b>	10/13 (77%)	18/51 (36%)	2.18 (1.35-3.51)	<b>0.008</b>

435

436

437 **FIGURES**



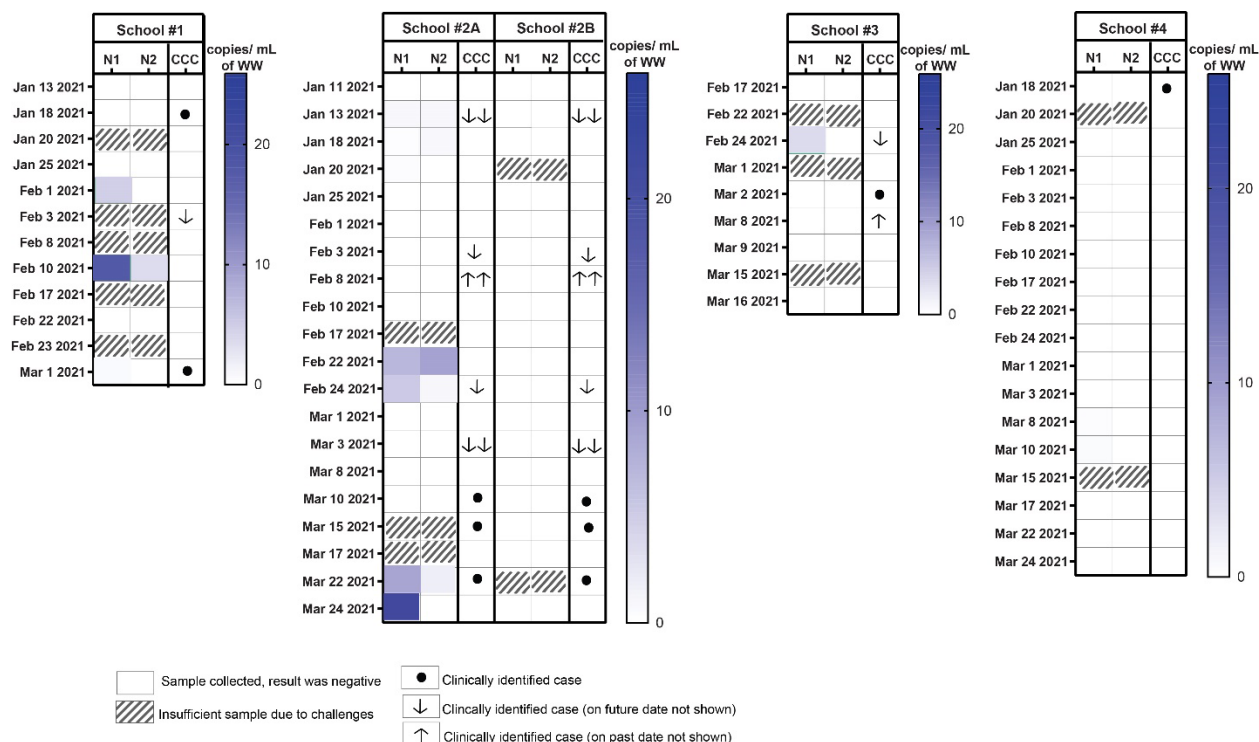
438  
439 **Figure 1. SARS-CoV-2 RNA in wastewater from schools is lower than that from the**  
440 **surrounding community.** Comparison of the SARS-CoV-2 RNA signal found in wastewater  
441 from schools and WWTP that were positive for SARS-CoV-2 RNA between January to March  
442 2021. Quantification of SARS-CoV-2 RNA in samples was determined by the N1 (blue) and N2  
443 (black) assays. (A) SARS-CoV-2 RNA signal (copies/mL). B) SARS-CoV-2 genomic copies  
444 normalized to genomic copies of the fecal biomarker PMMoV. Differences were determined  
445 using the Mann Whitney test. WW: wastewater, WWTP: wastewater treatment plants.

446

447



448



449

450 **Figure 2. Raw SARS-CoV-2 RNA detection in school wastewater.** SARS-CoV-2 N1- and N2-

451 RNA detected are plotted using a heat map. Clinically confirmed cases (CCC) reported to school

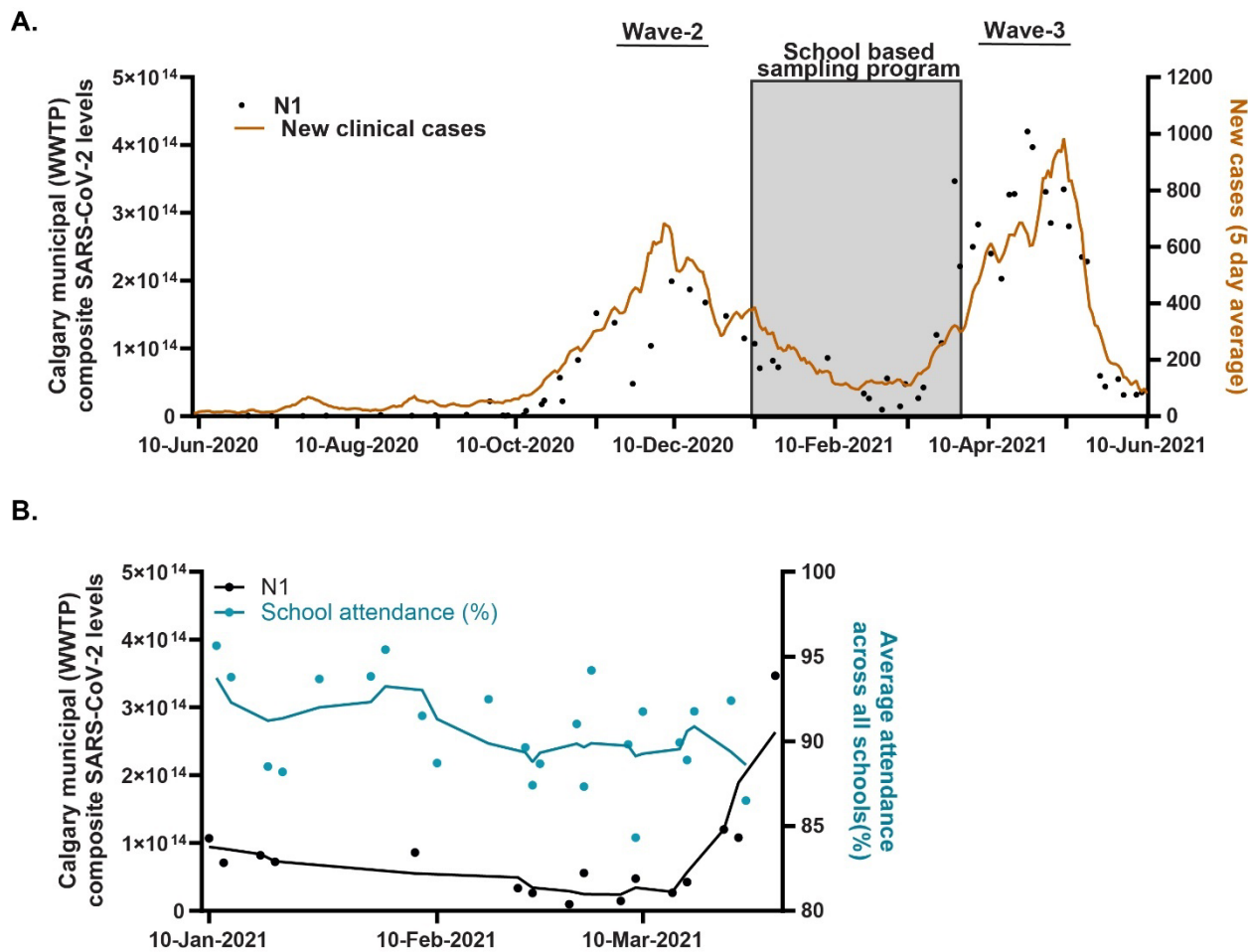
452 administrators are graphically shown for each school. An arrow in the CCC columns refers to a

453 clinically identified case on a date other than that of sample collection. The number of arrows

454 indicates the number of days removed from the date indicated (i.e., 2 downward facing arrows on

455 January 13<sup>th</sup> indicates a clinical case on January 15<sup>th</sup>).

456



457

458 **Figure 3. Total mass flux of SARS-CoV-2 RNA across the city of Calgary relative to**

459 **attendance patterns in the four individual schools monitored by WBS. (A) Daily dynamics**

460 **of the mass flux of SARS-CoV-2 RNA N1 across the entire city of Calgary from June 2020 to**

461 **June 2021 using the N1 (black dots) assay. Clinically confirmed COVID-19 new cases (5-day**

462 **average) are represented as orange lines. The sampling period for the four schools is highlighted**

463 **in grey – occurring between waves 2 and 3. (B) Average composite attendance (staff and**

464 **students) across all four schools compared against community burden of SARS-CoV-2 as**

465 **measured in Calgary’s wastewater. This figure serves as an assessment of the correlation**

466 **between the total SARS-CoV-2 wastewater-N1 (across all of Calgary) with the overall**

467 **attendance percentage (within 2 days, owing the frequency of sample collection) for all 4 schools**

468 participating in the program using the Spearman correlation test. Lines represent the best fit  
469 plotted with second order smoothing for the N1 SARS-CoV-2 concentration (copies per day)  
470 (Black) and average school attendance across the four monitored sites (%) (Blue) from January  
471 to March 2021. WBS: wastewater-based surveillance, WWTP: wastewater treatment plants.

472

473

## 474 References

- 475 1. Parkins, M.D., *et al.* Wastewater-based surveillance as a tool for public health action: SARS-CoV-  
476 2 and beyond. *Clinical Microbiology Reviews* **37**, e00103-00122 (2024).
- 477 2. Spurbeck, R.R., Minard-Smith, A. & Catlin, L. Feasibility of neighborhood and building scale  
478 wastewater-based genomic epidemiology for pathogen surveillance. *Science of The Total*  
479 *Environment* **789**, 147829 (2021).
- 480 3. Zahedi, A., Monis, P., Deere, D. & Ryan, U. Wastewater-based epidemiology-surveillance and  
481 early detection of waterborne pathogens with a focus on SARS-CoV-2, Cryptosporidium and  
482 Giardia. *Parasitol Res* **120**, 4167-4188 (2021).
- 483 4. Galani, A., *et al.* SARS-CoV-2 wastewater surveillance data can predict hospitalizations and ICU  
484 admissions. *Science of The Total Environment* **804**, 150151 (2022).
- 485 5. Schmitz, B.W., *et al.* Enumerating asymptomatic COVID-19 cases and estimating SARS-CoV-2  
486 fecal shedding rates via wastewater-based epidemiology. (Cold Spring Harbor Laboratory,  
487 2021).
- 488 6. Mahmoudi, T., Naghdi, T., Morales-Narváez, E. & Golmohammadi, H. Toward smart diagnosis of  
489 pandemic infectious diseases using wastewater-based epidemiology. *Trends Analyt Chem* **153**,  
490 116635 (2022).
- 491 7. Acosta, N., *et al.* Longitudinal SARS-CoV-2 RNA wastewater monitoring across a range of scales  
492 correlates with total and regional COVID-19 burden in a well-defined urban population. *Water*  
493 *Research* **220**, 118611 (2022).
- 494 8. Rubio-Acero, R., *et al.* Spatially resolved qualified sewage spot sampling to track SARS-CoV-2  
495 dynamics in Munich - One year of experience. *Sci Total Environ* **797**, 149031 (2021).
- 496 9. Barrios, R.E., Lim, C., Kelley, M.S. & Li, X. SARS-CoV-2 concentrations in a wastewater collection  
497 system indicated potential COVID-19 hotspots at the zip code level. *Science of The Total*  
498 *Environment* **800**, 149480 (2021).
- 499 10. Rios, G., *et al.* Monitoring SARS-CoV-2 variants alterations in Nice neighborhoods by wastewater  
500 nanopore sequencing. *Lancet Reg Health Eur*, 100202-100202 (2021).
- 501 11. Carrillo-Vega, M.F., Salinas-Escudero, G., García-Peña, C., Gutiérrez-Robledo, L.M. & Parra-  
502 Rodríguez, L. Early estimation of the risk factors for hospitalization and mortality by COVID-19 in  
503 Mexico. *PLOS ONE* **15**, e0238905 (2020).
- 504 12. Castro-Gutierrez, V., *et al.* Monitoring occurrence of SARS-CoV-2 in school populations: A  
505 wastewater-based approach. *PLOS ONE* **17**, e0270168 (2022).
- 506 13. Acosta, N., *et al.* A Multicenter Study Investigating SARS-CoV-2 in Tertiary-Care Hospital  
507 Wastewater. Viral burden correlates with increasing hospitalized cases as well as hospital-  
508 associated transmissions and outbreaks. *Water Research*, 117369 (2021).
- 509 14. Acosta, N., *et al.* Surveillance for SARS-CoV-2 and its variants in wastewater of tertiary care  
510 hospitals correlates with increasing case burden and outbreaks. *Journal of Medical Virology* **95**,  
511 e28442 (2023).
- 512 15. Lee, B.E., *et al.* Early warning and rapid public health response to prevent COVID-19 outbreaks in  
513 long-term care facilities (LTCF) by monitoring SARS-CoV-2 RNA in LTCF site-specific sewage  
514 samples and assessment of antibodies response in this population: prospective study protocol.  
515 *BMJ Open* **11**, e052282 (2021).
- 516 16. Pang, X., *et al.* Early warning COVID-19 outbreak in long-term care facilities using wastewater  
517 surveillance: correlation, prediction, and interaction with clinical and serological statuses. *The*  
518 *Lancet Microbe* **5**(2024).

- 519 17. ECDC. COVID-19 in children and the role of school settings in transmission - second update.  
520 (European Centre for Disease Prevention and Control, 2021).
- 521 18. Lewis, D. Why schools probably aren't COVID hotspots. *Nature* **587**, 17 (2020).
- 522 19. Gray, D.J., Williams, G.M. & McManus, D.P. COVID-19, children and schools: overlooked and at  
523 risk. *Medical Journal of Australia* **214**, 188 (2021).
- 524 20. Cui, X., *et al.* A systematic review and meta-analysis of children with coronavirus disease 2019  
525 (COVID-19). *J Med Virol* **93**, 1057-1069 (2021).
- 526 21. CDC. Coronavirus Disease 2019 in Children. in *MMWR Morb Mortal Wkly Rep* 2020;69:422-426  
527 (US Department of Health and Human Services/Centers for Disease Control and Prevention,  
528 2020).
- 529 22. Göttinger, F., *et al.* COVID-19 in children and adolescents in Europe: a multinational, multicentre  
530 cohort study. *Lancet Child Adolesc Health* **4**, 653-661 (2020).
- 531 23. Hagmann, S.H.F. COVID-19 in children: More than meets the eye. *Travel Med Infect Dis* **34**,  
532 101649 (2020).
- 533 24. Castagnoli, R., *et al.* Severe Acute Respiratory Syndrome Coronavirus 2 (SARS-CoV-2) Infection in  
534 Children and Adolescents: A Systematic Review. *JAMA Pediatr* **174**, 882-889 (2020).
- 535 25. Centre-for-Health-Informatics. Alberta's Pandemic Response: COVID-19 in Wastewater. Vol.  
536 2024 (2024).
- 537 26. Alberta-Government. Resource guide for COVID-19 cases in school (k-12) settings. Vol. 2024  
538 ([https://open.alberta.ca/publications/resource-guide-covid-19-cases-schools-settings-before-](https://open.alberta.ca/publications/resource-guide-covid-19-cases-schools-settings-before-during-after-covid-19-alert-outbreak)  
539 [during-after-covid-19-alert-outbreak](https://open.alberta.ca/publications/resource-guide-covid-19-cases-schools-settings-before-during-after-covid-19-alert-outbreak), 2021).
- 540 27. CBE. Health & Wellness in School. Vol. 2024 (Calgary Board of Education,  
541 [https://cbe.ab.ca/about-us/school-culture-and-environment/health-and-wellness-in-](https://cbe.ab.ca/about-us/school-culture-and-environment/health-and-wellness-in-school/Pages/coronavirus.aspx)  
542 [school/Pages/coronavirus.aspx](https://cbe.ab.ca/about-us/school-culture-and-environment/health-and-wellness-in-school/Pages/coronavirus.aspx), 2024).
- 543 28. Alberta-Government. Parents' guide 2020-21 school year. Vol. 2024  
544 (<https://open.alberta.ca/publications/covid-19-information-parents-guide-2020-21-school-year>,  
545 2020).
- 546 29. Hassard, F., *et al.* Wastewater monitoring for detection of public health markers during the  
547 COVID-19 pandemic: Near-source monitoring of schools in England over an academic year. *PLOS*  
548 *ONE* **18**, e0286259 (2023).
- 549 30. Lopez Marin, M.A., *et al.* Monitoring COVID-19 spread in selected Prague's schools based on the  
550 presence of SARS-CoV-2 RNA in wastewater. *Science of The Total Environment* **871**, 161935  
551 (2023).
- 552 31. Wolken, M., *et al.* Wastewater surveillance of SARS-CoV-2 and influenza in preK-12 schools  
553 shows school, community, and citywide infections. *Water Research* **231**, 119648 (2023).
- 554 32. Crowe, J., *et al.* Assessment of a Program for SARS-CoV-2 Screening and Environmental  
555 Monitoring in an Urban Public School District. *JAMA Network Open* **4**, e2126447-e2126447  
556 (2021).
- 557 33. Fielding-Miller, R., *et al.* Safer at school early alert: an observational study of wastewater and  
558 surface monitoring to detect COVID-19 in elementary schools. *Lancet Reg Health Am* **19**, 100449  
559 (2023).
- 560 34. Nakgul, L., *et al.* Saliva and wastewater surveillance for SARS-CoV-2 during school reopening  
561 amid COVID-19 pandemic in Thailand. *Public Health in Practice* **5**, 100378 (2023).
- 562 35. Kim, S. & Boehm, A.B. Wastewater monitoring of SARS-CoV-2 RNA at K-12 schools: comparison  
563 to pooled clinical testing data. *PeerJ* **11**, e15079 (2023).
- 564 36. Kappus-Kron, H., *et al.* Precision public health in schools enabled by wastewater surveillance: A  
565 case study of COVID-19 in an Upstate New York middle-high school campus during the 2021-  
566 2022 academic year. *PLOS Global Public Health* **4**, e0001803 (2024).

- 567 37. Sellers, S.C., *et al.* Building-level wastewater surveillance of SARS-CoV-2 is associated with  
568 transmission and variant trends in a university setting. *Environmental Research* **215**, 114277  
569 (2022).
- 570 38. Gibas, C., *et al.* Implementing building-level SARS-CoV-2 wastewater surveillance on a university  
571 campus. *Science of The Total Environment* **782**, 146749 (2021).
- 572 39. Harris-Lovett, S., *et al.* Wastewater Surveillance for SARS-CoV-2 on College Campuses: Initial  
573 Efforts, Lessons Learned, and Research Needs. *International Journal of Environmental Research*  
574 *and Public Health* **18**, 4455 (2021).
- 575 40. Kotay, S.M., *et al.* Building-Level Wastewater Surveillance for SARS-CoV-2 in Occupied University  
576 Dormitories as an Outbreak Forecasting Tool: One Year Case Study. *ACS ES&T Water* **2**, 2094-  
577 2104 (2022).
- 578 41. Rondeau, N.C., *et al.* Building-Level Detection Threshold of SARS-CoV-2 in Wastewater.  
579 *Microbiology Spectrum* **11**, e02929-02922 (2023).
- 580 42. Zambrana, W., *et al.* SARS-CoV-2 RNA and N Antigen Quantification via Wastewater at the  
581 Campus Level, Building Cluster Level, and Individual-Building Level. *ACS ES&T Water* **2**, 2025-  
582 2033 (2022).
- 583 43. Hassard, F., Singh, S., Coulon, F. & Yang, Z. Can wastewater monitoring protect public health in  
584 schools? *The Lancet Regional Health – Americas* **20**(2023).
- 585 44. Jones, D.L., *et al.* Shedding of SARS-CoV-2 in feces and urine and its potential role in person-to-  
586 person transmission and the environment-based spread of COVID-19. *Science of The Total*  
587 *Environment* **749**, 141364 (2020).
- 588 45. Lundblad, B. & Hellström, A.L. Perceptions of school toilets as a cause for irregular toilet habits  
589 among schoolchildren aged 6 to 16 years. *J Sch Health* **75**, 125-128 (2005).
- 590 46. Wolfe, M.K., *et al.* Wastewater-based detection of an influenza outbreak. (Cold Spring Harbor  
591 Laboratory, 2022).
- 592 47. Lin, X., *et al.* Continuous detection of norovirus and astrovirus in wastewater in a coastal city of  
593 China in 2014–2016. *Letters in Applied Microbiology* **73**, 418-425 (2021).
- 594 48. Benschop, K.S.M., *et al.* Polio and Measles Down the Drain: Environmental Enterovirus  
595 Surveillance in the Netherlands, 2005 to 2015. *Appl Environ Microbiol* **83**(2017).
- 596 49. Hughes, B., *et al.* Respiratory Syncytial Virus (RSV) RNA in Wastewater Settled Solids Reflects  
597 RSV Clinical Positivity Rates. *Environmental Science & Technology Letters* **9**, 173-178 (2022).
- 598 50. Alberta. COVID-19 Alberta statistics. Vol. 2021 ([https://www.alberta.ca/stats/covid-19-alberta-](https://www.alberta.ca/stats/covid-19-alberta-statistics.htm)  
599 [statistics.htm](https://www.alberta.ca/stats/covid-19-alberta-statistics.htm), 2021).
- 600 51. Alberta. Alberta schools to resume in-person classes on Jan. 11, as other COVID-19 restrictions  
601 extended. Vol. 2023 ([https://www.cbc.ca/news/canada/edmonton/covid-briefing-kenney-](https://www.cbc.ca/news/canada/edmonton/covid-briefing-kenney-hinshaw-1.5864683)  
602 [hinshaw-1.5864683](https://www.cbc.ca/news/canada/edmonton/covid-briefing-kenney-hinshaw-1.5864683), 2021).
- 603 52. Whitney O.N, *et al.* *U.B.W.-b.e. consortium 2020 V.4 -Direct wastewater RNA capture and*  
604 *purification via the "sewage, salt, silica and SARS-CoV-2 (4S)*. [https://dx.doi.org/](https://dx.doi.org/10.17504/protocols.io.bpdfmi3n)  
605 [10.17504/protocols.io.bpdfmi3n](https://dx.doi.org/10.17504/protocols.io.bpdfmi3n).
- 606 53. Medema, G., Heijnen, L., Elsinga, G., Italiaander, R. & Brouwer, A. Presence of SARS-Coronavirus-  
607 2 RNA in Sewage and Correlation with Reported COVID-19 Prevalence in the Early Stage of the  
608 Epidemic in The Netherlands. *Environ. Sci. Technol. Lett.* **7**, 511-516 (2020).
- 609 54. Randazzo, W., *et al.* SARS-CoV-2 RNA in wastewater anticipated COVID-19 occurrence in a low  
610 prevalence area. *Water Research* **181**, 115942 (2020).
- 611 55. Staley, C., Gordon, K.V., Schoen, M.E. & Harwood, V.J. Performance of Two Quantitative PCR  
612 Methods for Microbial Source Tracking of Human Sewage and Implications for Microbial Risk  
613 Assessment in Recreational Waters. *Applied and Environmental Microbiology* **78**, 7317-7326  
614 (2012).

615 56. USEPA. Total, Fixed, and Volatile Solids in Water, Solids, and Biosolids. (U.S. Environmental  
616 Protection Agency Office of Water,  
617 <https://nepis.epa.gov/Exe/ZyNET.exe/P1002CZ8.TXT?ZyActionD=ZyDocument&Client=EPA&Index=2000+Thru+2005&Docs=&Query=&Time=&EndTime=&SearchMethod=1&TocRestrict=n&Toc=&TocEntry=&QField=&QFieldYear=&QFieldMonth=&QFieldDay=&IntQFieldOp=0&ExtQFieldOp=0&XmlQuery=&File=D%3A%5Czyfiles%5CIndex%20Data%5C00thru05%5CTxt%5C0000016%5CP1002CZ8.txt&User=ANONYMOUS&Password=anonymous&SortMethod=h%7C-&MaximumDocuments=1&FuzzyDegree=0&ImageQuality=r75g8/r75g8/x150y150g16/i425&Display=hpfr&DefSeekPage=x&SearchBack=ZyActionL&Back=ZyActionS&BackDesc=Results%20page&MaximumPages=1&ZyEntry=1&SeekPage=x&ZyPURL>, 2001).  
625