



26 **Clinical outcomes of Lassa fever in West Africa: A systematic**  
27 **review and meta-analysis**

34

35 *Azuka Patrick Okwuraiwe<sup>1</sup>, Chizaram Anselm Onyeaghala<sup>2\*</sup>, Obiageli Theresa Ozoude<sup>3</sup>,*  
36 *Muritala Odidi Suleiman<sup>4</sup>, Samirah Nndwan Abdu-Aguye<sup>5</sup> Nkolika Jacinta Ezekwelu,<sup>6</sup> Tolulope*  
37 *Amos Oyeniya,<sup>7</sup> Ayodapo Oluwadare Jegede,<sup>8</sup> Aadaeze Elfrida Egwudo<sup>6</sup>, Oluchukwu Perpetua*  
38 *Okeke<sup>9</sup>, Olunuke Rebecca Abodunrin<sup>10</sup>, Folahanmi Tomiwa Akinsolu<sup>9,11</sup>, Olajide Odunayo*  
39 *Sobande<sup>9</sup>*

40 <sup>1</sup>Centre for Human Virology and Genomics, Microbiology Department, Nigerian Institute of  
41 Medical Research, Yaba, PMB 101212, Lagos, Nigeria.

42 <sup>2</sup>Department of Internal Medicine, University of Port Harcourt Teaching Hospital, Port Harcourt,  
43 Rivers State, Nigeria

44 <sup>3</sup>Department of Microbiology, Veritas University, Bwari Area Council, FCT-Abuja, Nigeria

45 <sup>4</sup>Department of Human Anatomy, Federal University, Dutse, Jigawa State, Nigeria.

46 <sup>5</sup>Department of Clinical Pharmacy and Pharmacy Practice, Ahmadu Bello University Zaria,  
47 Kaduna, Nigeria.

48 <sup>6</sup>Department of Community Health and Primary Care, Lagos University Teaching Hospital,  
49 Lagos, Nigeria.

50 <sup>7</sup>Department of Public Health and Epidemiology, Nigerian Institute of Medical Research, Lagos,  
51 Nigeria.

52 <sup>8</sup>Department of Clinical Pharmacy and Pharmacy Administration, Obafemi Awolowo University,  
53 Ile-Ife, Osun, Nigeria

54 <sup>9</sup>Nigerian Institute of Medical Research Foundation, Yaba, Lagos State, Nigeria

55 <sup>10</sup>Department of Epidemiology and Biostatistics, Nanjing Medical University, Nanjing, China

56 <sup>11</sup>Clinical Sciences Department, Lead City University, Ibadan, Nigeria

57

58 \*Corresponding Author: Email address: [chizaram.onyeaghala @npmcn.edu.ng](mailto:chizaram.onyeaghala@npmcn.edu.ng) “CAO”

59

## 60 Abstract

61 **Introduction:** Lassa fever is an acute viral haemorrhagic fever that poses a substantial public  
62 health security threat in West Africa. Due to its non-specific clinical manifestations and the  
63 absence of a reliable point-of-care test, diagnosis could be delayed, leading to severe complications  
64 and mortality during epidemics. This systematic review aimed to determine the clinical outcomes  
65 of LF in West Africa.

66 **Methods:** A systematic review and meta-analyses were performed by conducting an extensive  
67 online search using PubMed, Web of Science, Scopus, CINAHL, and Google Scholar  
68 (PROSPERO protocol CRD42024587426). Only articles written in English were included in  
69 publications from 2014 to 2024. The analysis followed PRISMA guidelines. The mortality rate of  
70 LF was pooled using a random effects model.

71 **Results:** We included 19 studies that contained data from 4177 patients hospitalized with LF of  
72 any age. Most of the studies were of retrospective cohort (16/19; 84.2%) study design and were  
73 predominantly conducted in Nigeria (16/19; 84.2%). The mortality rate was highest in a Sierra  
74 Leonean study (63.0%), whereas group-based analysis among the Nigerian studies identified Owo  
75 as having the highest mortality rate of 13% (95% CI: 06-23;  $I^2=98\%$ ). The pooled LF mortality  
76 rate was 19% (95% confidence interval [CI]:10-32). The most common complications of LF are  
77 acute kidney injury (AKI) at a pooled proportion of 19% (95% CI; 13-26;  $I^2=89\%$ ), followed by  
78 abnormal bleeding at a pooled proportion of 17% (95% CI; 9-30;  $I^2=98\%$ ), and CNS  
79 manifestations at a pooled proportion of 15% (95% CI; 6-32;  $I^2=98\%$ ).

80 **Conclusion:** With one out of every five hospitalized Lassa Fever patients likely to die in West  
81 Africa, accelerating the development of rapid diagnostic tests, licensed vaccines, and novel

82 therapeutics is crucial. Strengthening community engagement, risk communication, and healthcare  
83 worker training will enhance early diagnosis and effective case management thereby reducing  
84 mortality and severe complications.

85

86 Keywords: *Lassa fever, West Africa, Mortality rate, Abnormal bleeding, Acute kidney injury, CNS*  
87 *manifestation.*

88

89

90

91

92

93

94

95

96

97

98

99

100

101

## 102 **Introduction**

103 Lassa fever (LF) is an acute viral haemorrhagic fever (VHF) that poses a significant threat to health  
104 security. First described in 1969 in Nigeria, Lassa fever's causative agent is the Lassa virus  
105 (LASV), a member of the Arenaviridae family and a biosafety level 4 pathogen. It is endemic in  
106 parts of West Africa, including Nigeria, Sierra Leone, Guinea, and Liberia.[1] The main reservoir  
107 and primary source of infection is the multimammate mouse (*Mastomys natalensis*). [2] However,  
108 the virus also spreads between human beings via contact with the body fluids of an infected person,  
109 consumption, or handling of contaminated food or household items. An estimated 300,000-  
110 500,000 people are infected with LASV every year in West Africa, although the overall incidence  
111 is likely to be underestimated with 5,000-10,000 deaths annually. [3]

112 Nigeria has the highest reported cases of LF estimated at 25% of the total disease burden. [4] The  
113 incubation period of Lassa fever is 3-21 days. [5] Nigeria has experienced increases in confirmed  
114 cases and deaths yearly since 2017, although this may be attributed to heightened clinical  
115 awareness and improvements in polymerase chain reaction-based diagnostic capacity. Lassa fever  
116 is said to have seasonal transmission annually between November and March, however, there are  
117 increasing reports of double peaks due to climate change (rainfall and increased temperature)  
118 related influence on the multiplicity of the rodent vector and the emergence of new hosts  
119 (*Mastomys erythroleucus* and *Hylomyscus pamfi*). [6,7] Due to the epidemic potential of Lassa  
120 fever and its high case fatality rates (CFR) in hospitalized patients, Lassa fever was included in  
121 the priority list of diseases for research and development, urging intensified research, including  
122 improved treatments, a blueprint of the World Health Organization. [8-10] The only known  
123 treatment is the broad-spectrum antiviral drug ribavirin, shown to be most effective in the first six  
124 days, after the onset of symptoms. No approved vaccine is currently available for LASV, although

125 progress has been made in the multiagency Coalition for Epidemic Preparedness Innovations-  
126 funded Lassa fever (IAVI-C105) clinical trials [11,12] and with human monoclonal antibodies and  
127 other antivirals in preclinical animal models. [13,14]

128 Most individuals infected with LASV in Africa are never diagnosed with Lassa fever because of  
129 mild or asymptomatic presentation of the disease and the lack of readily available diagnostic  
130 assays. [15] Clinical manifestations are variable, and often non-specific as many of those are seen  
131 in other febrile infectious diseases in endemic areas such as malaria, and typhoid fever. Although  
132 the overall case fatality rate (CFR) is 1%, between 10% and 20% of patients treated in hospitals  
133 with Lassa fever die, which can be much higher (above 40%) in outbreak settings or individuals  
134 at increased risk. Outbreaks frequently occur in Nigeria and 38% of cases were fatal in the outbreak  
135 of 2015. [15] Available studies show a wide spectrum of clinical severities, ranging from  
136 asymptomatic infection to serious multiorgan dysfunction and death. Even among acute cases,  
137 observations range from minimal cell damage in the liver and kidneys to more extensive  
138 involvement of these organs. [15] Severe Lassa fever with a lethal outcome is associated with  
139 encephalopathy, acute kidney injury, respiratory failure, and death.

140 This systematic review, therefore, sets out to determine the clinical outcomes of Lassa fever in  
141 West Africa. This is aimed at providing useful information that will improve early diagnosis and  
142 clinical management of Lassa fever in West Africa.

143

144 **Methods**

145 **Protocol registration**

146 The study protocol was prospectively registered in the International Prospective Register of  
147 Systematic Review, PROSPERO (CRD42024587426). The conduct and reporting of this  
148 systematic review and meta-analysis were guided by the Preferred Reporting Items for Systematic  
149 Reviews and Meta-Analyses (PRISMA). [16]

150

### 151 **Search strategy**

152 An extensive online search was conducted using four top academic databases for biomedical  
153 journals; PubMed, Web of Science, Scopus, CINAHL, and Google Scholar. The search strategy  
154 included peer-reviewed studies published between 1 September 2004 and 31 August 2024. In  
155 addition, the reference lists of included studies were screened to identify additional publications.

156 The search string included combinations of the following 3 keywords: terms related to “clinical  
157 outcomes”, “Lassa fever”, “West Africa”. Appropriate medical subject headings (MeSH) terms  
158 were added to the databases and this was adjusted to optimize the search for relevant literature.

159 The Boolean operators or connector words “AND” and “OR” were used to combine or exclude  
160 search terms effectively and achieve a final result set. All identified articles were imported into  
161 Rayyan software for de-duplication and to organize the bibliography. In addition to keeping track  
162 of search resources, dates resources searched were noted to ensure that the review included the  
163 most current evidence-based literature on the review question.

164

### 165 **Review Questions**

### 166 **Primary Outcomes**

- 167 1. What is the number of participants with mortality for Lassa fever infection.
- 168 2. What is the number of participants who recovered from Lassa fever infection
- 169 3. What is the number of participants who developed complications due to Lassa fever infection.
- 170 4. What is the number of participants who were lost to follow-up.

171

## 172 **Inclusion and exclusion Criteria**

173 All studies that reported clinical outcomes of Lassa fever in West Africa, in the English language,  
174 and published between January 2014 and December 2024 were eligible. Quantitative studies such  
175 as cohort studies, retrospective studies, case-control studies, and interventional studies that  
176 discussed the recovery, mortality, complications, and loss to follow-up of Lassa fever patients were  
177 included in the review. Studies were screened using the PICOTS framework (Population,  
178 Intervention, Comparators, Outcomes, Time, Studies).

179 Studies were excluded if they were found to contain only abstracts or were cross-sectional studies,  
180 case reports, and case series.

181

## 182 **Data extraction**

183 Data extraction was done by two independent reviewers (O.T.O., and M.O.S., with discrepancies  
184 resolved by a third reviewer A.P.O.) using a pretested data extraction form prepared in Microsoft  
185 Excel. Reliability between reviewers was ensured by using the Kappa scores. The reviewers  
186 independently extracted relevant information, including first author, publication year, country  
187 (city/area) of study, sample size, gender, study design, inclusion criteria, number of participants



188 confirmed for Lassa fever infection, clinical outcomes such as recovery, mortality, mean age, age  
189 range, complications and lost to follow-up.

190

## 191 **Selection of studies**

192 We downloaded all titles and abstracts retrieved by electronic searching to the reference  
193 management software Zotero version 6.0.23. We removed duplicates, and three review authors  
194 (O.T.O., M.O.S., and A.P.O) independently examined the remaining references. We excluded  
195 studies that did not meet the inclusion criteria and obtained copies of the full text of potentially  
196 relevant studies. Two review authors (O.T.O and M.O.S.) independently assessed the eligibility of  
197 the retrieved papers and resolved any disagreements by discussion or recourse to a third review  
198 author (A.P.O. or C.A.O.).

199

## 200 **Methodological quality and risk of bias assessment**

201 The methodology quality of the included studies was assessed using the Critical Appraisal tools  
202 for use in the Joanna Briggs Institute (JBI) Systematic Reviews Checklist for cohort studies. [17]  
203 Two independent reviewers assessed the methodological quality and risk of bias using the JBI  
204 checklist for cohort studies to assess for risk of bias. Discrepancies were resolved by a third  
205 reviewer. Eleven quality domains were used for this assessment. They included the description of  
206 similarity among the two groups recruited, the similarity of measured exposures, validity, and  
207 reliability of measured exposures, identification of confounding factors, strategies to deal with  
208 confounding factors, being free of the outcome at the start or the moment of exposure, valid and  
209 reliable measurement of outcomes, sufficient time for report and manifestations of outcomes,

210 completeness or non-completeness of follow up, strategies to addressing incomplete follow up,  
211 and use of appropriate statistical analysis tool. In addition, a unique identification was assigned to  
212 each selected study. The total score ranged from 0 to 11, with the overall score categorized as  
213 follows: 0–3: “high risk,” 4–7: “moderate risk,” and 8–11: “low risk” of bias.

214

## 215 **Statistical analysis**

216 A meta-analysis was performed on studies reporting clinical outcomes of Lassa fever, including  
217 death, survival, abnormal bleeding, acute kidney disease, and central nervous system (CNS)  
218 manifestations. The pooled proportions for each clinical outcome were calculated along with 95%  
219 confidence intervals (CIs). Statistical heterogeneity among studies was assessed using Cochran's  
220 Q test and the  $I^2$  statistic. A P-value of  $<0.1$  for the Q test and an  $I^2$  value greater than 50% indicated  
221 significant heterogeneity. Given the expected variability, a random-effects model was employed  
222 to pool outcomes, yielding a more conservative estimate of prevalence.

223 Additionally, subgroup analyses were conducted based on the publication year of the included  
224 studies. For studies conducted in Nigeria, further subgroup analyses were performed based on the  
225 specific locations of these studies.

226 Funnel plots were utilized to evaluate publication bias for the primary outcome. A leave-one-out  
227 analysis was executed to systematically exclude each study, assessing the robustness of the results  
228 and the influence of individual studies on the pooled prevalence.

229 All statistical analyses were conducted using R software (version 4.4.2).

230

## 231 **Results**

### 232 **Selection of studies**

233 A total of 2022 records were retrieved through electronic searches, of which 476 were from  
234 electronically published databases, and 1546 from other search engines (Google Scholar). After  
235 removing 409 duplicate records, 1613 remained from which 1275 were excluded following title  
236 and abstract screening. The full-text records for the remaining 338 studies were obtained for  
237 detailed evaluations, after which 281 studies were excluded during resolution of conflict. In  
238 addition, only studies that showed clear methodology were included. Finally, 19 met the study  
239 inclusion criteria. The full search summary is presented in the Transparent Reporting of Systematic  
240 Reviews and Meta-analyses (PRISMA) Flow Diagram in Figure 1.

241 **Insert here “Figure 1: PRISMA flow chart”**

242

### 243 **Characteristics of included studies**

244 A total of 4177 subjects were covered by the 19 synthesized studies, with the sample size in  
245 individual studies ranging from 11 to 1594, a median of 100, and a mean of 219.8.

246 The age range of the enrolled subjects was provided by 84.2% of the studies with the widest age  
247 range being 1–90 years while the narrowest was 5–12 years. Some studies did not report the mean  
248 or median and age range of the sample. However, 4/19 studies (12.8%) did not report any mean or  
249 median age data. Many of the studies reported gender-aggregated data.

250 Synthesized studies were predominantly Nigerian studies [see Figure 2], (16/19; 84.2%), in Owo  
251 (6/16; 37.5%), and of retrospective cohort (16/19; 84.2%) study design. The earliest study was

252 conducted in 2014 and the latest in 2024 (Table 1). The number of articles published was highest  
253 in 2020 (Figure 3).

254

255 **Insert here “Figure 2: Countries that reported clinical outcomes of Lassa fever in West  
256 Africa”**

257 **Insert here “Figure 3: Frequency of included studies based on year of publication”**

Table 1: Characteristics of included studies

S/N	First Author's name	Publication Year	Title	Study Design	Sample size	Study setting	Mean/median Age (years)	Gender	Country of study (City)	Quality assessment score
1	Duvignaud et al. [18]	2024	Presentation and outcomes of Lassa fever in children in Nigeria: a prospective cohort study (LASCOPE)	Prospective cohort	124	Rural	-	M = 62 F = 62	Nigeria (Owo)	10
2	Orji et al. [19]	2020	Prevalence, pattern, and outcome of pediatric Lassa fever disease (LFD) in a tertiary hospital, southeast Nigeria	Retrospective cohort	24	Rural	53	M= 9 F = 15	Nigeria (Owo)	10
3	Saleh et al. [20]	2020	Exposure incidents and outcome of Lassa fever virus (LASV) infection among healthcare workers in Nigeria, 2019	Retrospective cohort	19	Rural & urban	38	M = 9 F = 10	Nigeria (Abakaliki)	10
4	Abdu et al. [21]	2022	Factors affecting outcome in reverse transcriptase-polymerase chain		187	Urban	37.3	M = 130 F = 57	Nigeria (Bauchi)	10

			reaction-positive Lassa fever patients with acute kidney injury: a retrospective analysis	Retrospective cohort						
5	Owhin et al. [22]	2020	The Impact and Morphology of Anaemia among Lassa Fever Patients Treated in a Dedicated Treatment Centre in South West Nigeria	Retrospective observational	100	Rural	33.9	M = 54 F = 46	Nigeria (Owo)	10
6	Akpede et al. [23]	2019	Caseload and Case Fatality of Lassa Fever in Nigeria, 2001-2018: A Specialist Center's Experience and Its Implications.	Retrospective cohort	1594	Rural	-	-	Nigeria (Owo)	10
7	Okokhere et al. [24]	2018	Clinical and laboratory predictors of Lassa fever outcome in a dedicated treatment facility in Nigeria: a retrospective, observational cohort study.	Observational cohort	291	Rural	35	M = 170 F = 121	Nigeria (Owo)	9

8	Dahmane et al. [25]	2014	Constraints in the diagnosis and treatment of Lassa Fever and the effect on mortality in hospitalized children and women with obstetric conditions in a rural district hospital in Sierra Leone.	Retrospective cohort	36	Rural	-	M = 20 F = 16	Nigeria (Owo)	10
9	Dwalu et al. [26]	2024	Trend of Lassa fever cases and factors associated with mortality in Liberia, 2016 - 2021: a secondary data analysis	Retrospective cohort	192	Rural	21	M = 88 F = 104	Sierra Leone, (Bo district)	10
10	Shehu et al. [27]	2018	Lassa fever 2016 outbreak in Plateau State, Nigeria—The changing epidemiology and clinical presentation	Retrospective cohort	11	Rural & Urban	31	M = 6 F = 5	Liberia (Plateau)	10
11	Adetunji et al. [28]	2021	Acute kidney injury and mortality in pediatric Lassa fever versus question of access to dialysis	Retrospective cohort	58	Rural	6.4	M = 34 F = 24	Nigeria (Jos)	9

12	Samuels et al. [29]	2020	Lassa Fever among Children in Eastern Province, Sierra Leone: A 7-year Retrospective Analysis (2012-2018).	Retrospective cohort	57	Rural	-	M = 36 F = 21	Nigeria (Irrua)	10
13	Okogbeni et al. [30]	2019	Retrospective Cohort Study of Lassa Fever in Pregnancy, Southern Nigeria	Retrospective cohort	30	Rural	28.1	M = 0 F = 30	Sierra Leone (Kenema)	10
14	Chika-Igwenyi et al. [31]	2021	Early onset of neurological features differentiates two outbreaks of Lassa fever in Ebonyi State, Nigeria during 2017–2018	Retrospective cohort	70	Rural	36.3; 35.6	M = 38; 7 F = 31; 7	Nigeria (Irrua, Owo, Abakali ki)	10
15	Nwafor et al. [32]	2020	Prevalence and outcome of Lassa fever among hospitalized patients in Ebonyi State, Nigeria, 2018-2019	Retrospective cohort	113	Rural	32.9	-	Nigeria (Abakali ki)	10
16	Ilori et al. [33]	2019	Epidemiologic and Clinical Features of Lassa Fever Outbreak in	Retrospective cohort	414	Rural & Urban	32	M = 157 F = 257	Nigeria (Abakali ki)	10



			Nigeria, January 1- May 6, 2018							
17	Duvignua d et al. [34]	2021	Lassa fever outcomes and prognostic factors in Nigeria (LASCOPE): a prospective cohort study	Prospecti ve cohort	534	Rural	32	M = 258 F = 252	Nigeria (Owo)	10
18	Buba et al. [35]	2018	Mortality Among Confirmed Lassa Fever Cases During the 2015-2016 Outbreak in Nigeria	Retrospec tive cohort	47	Rural	31.4	M = 30 F = 17	Nigeria (Owo)	10
19	Ilesanmi et al. [36]	2022	Mortality among confirmed Lassa Fever cases in Ondo State, Nigeria, January 2017- March 2019: A cross-sectional study	Retrospec tive cohort	276	Rural & Urban	34	-	Nigeria (Owo)	10

## Primary outcomes

Recovery: Among synthesized studies, recovery rates ranged from 37% to 96.8% (Table 2). The recovery rate was highest in the prospective cohort study conducted by Duvignaud and colleagues in 2024 (96.8%). [34]

Mortality: Mortality rates ranged from 3.2% to 63.0% in the included studies. The mortality rate was highest in the study carried out by Samuels et al. in the Eastern Province of Sierra Leone 2020 (63.0%). [29]

Complications: The majority of the studies included in the review reported complications (12/19; 63.2%). [18-22,24,25,28,34] The most common complications reported included abnormal bleeding (10/19; 52.6%) [18-22,24,25,28,29,33,34] acute kidney injury (8/19; 42.1%) [18,19,21,22,24,28,31,34] and central nervous system (CNS) manifestation (8/19; 42.1%). [24,28,29,33] Sensorineural deafness, another clinically relevant complication was also reported (1/19; 5.3%) in the review. [19] (Figure 4)

Lost to follow-up (LFTU): Only one study reported LFTU (1/19; 5.2%). [24] Okokhere and colleagues reported in 2018 that seven patients were discharged against medical advice (Table 2).

**Insert here “Figure 4: Frequency of complications of Lassa fever”**

**Table 2: Clinical outcomes of included studies**



S/N	First Author's name	Year of publication	Title	Clinical Outcomes			
				Recovery (%)	Death (%)	Complications	Lost to follow-up (%)
1	Duvignaud et al. [18]	2024	Presentation and outcomes of Lassa fever in children in Nigeria: a prospective cohort study (LASCOPE)	120 (96.8)	4 (3.2)	Bleeding, septic shock, respiratory dysfunction, acute kidney injury	-
2	Orji et al. [19]	2020	Prevalence, pattern, and outcome of pediatric Lassa fever disease (LFD) in a tertiary hospital, southeast Nigeria	17 (70.8)	7 (29.1)	Bleeding, acute kidney injury, deafness	-
3	Saleh et al. [20]	2020	Exposure incidents and outcome of Lassa fever virus (LASV) infection among healthcare workers in Nigeria, 2019	17 (89.4)	2 (10.6)	-	-
4	Abdu et al. [21]	2022	Factors affecting outcome in reverse transcriptase-polymerase chain reaction-positive Lassa fever patients with acute kidney injury: a retrospective analysis	134 (70.2)	57 (29.8)	Bleeding, acute kidney injury, septic shock	-
5	Owhin et al. [22]	2020	The Impact and Morphology of Anaemia among Lassa Fever Patients Treated in a Dedicated Treatment Centre in Southwest Nigeria	0 (0)	0 (0)	Anemia, acute kidney injury, bleeding,	-

6	Akpede et al. [23]	2019	Caseload and Case Fatality of Lassa Fever in Nigeria, 2001-2018: A Specialist Center's Experience and Its Implications.	8695 (96)	362 (4.0)	-	-
7	Okokhere et al. [24]	2018	Clinical and laboratory predictors of Lassa fever outcome in a dedicated treatment facility in Nigeria: a retrospective, observational cohort study.	216 (76)	68 (24.0)	Anemia, Acute kidney injury, bleeding, CNS manifestations (coma, seizure; irrational talk/behavior, altered sensorium, tremors, and disorientation/confusion: which suggest encephalitis, meningitis, or encephalopathy, dizziness, lethargy, drowsiness)	7 (2.4)
8	Dahmane et al. [25]	2014	Constraints in the diagnosis and treatment of Lassa Fever and the effect on mortality in hospitalized children and women with obstetric conditions in a rural district hospital in Sierra Leone.	14 (38.9)	22 (61.1)	Abnormal bleeding	-
9	Dwalu et al. [26]	2024	Trend of Lassa fever cases and factors associated with mortality in Liberia, 2016 - 2021: a secondary data analysis	407 (55.2)	330 (44.8)	-	-
10	Shehu et al. [27]	2018	Lassa fever 2016 outbreak in Plateau State, Nigeria—The changing epidemiology and clinical presentation	7 (63.6)	4 (36.4)	-	-

11	Adetunji et al. [28]	2021	Acute kidney injury and mortality in pediatric Lassa fever versus question of access to dialysis	41 (71.9)	16 (28.1)	Acute kidney injury, abnormal bleeding, encephalopathy, septic shock	1 (1.7)
12	Samuels et al. [29]	2020	Lassa Fever among Children in Eastern Province, Sierra Leone: A 7-year Retrospective Analysis (2012-2018).	108 (37)	184 (63.0)	Abnormal bleeding, CNS manifestations (confusion or altered sensorium)	-
13	Okogbenin et al. [30]	2019	Retrospective Cohort Study of Lassa Fever in Pregnancy, Southern Nigeria	19 (63.3)	11 (36.7)	Intrauterine fetal death (IUFD)	-
14	Chika-Igwenyi et al. [31]	2021	Early onset of neurological features differentiates two outbreaks of Lassa fever in Ebonyi state, Nigeria during 2017–2018	223 (76.6)	68 (23.4)	Acute kidney injury	-
15	Nwafor et al. [32]	2020	Prevalence and outcome of Lassa fever among hospitalized patients in Ebonyi State, Nigeria, 2018-2019	71 (62.8)	42 (37.2)	-	-
16	Ilori et al. [33]	2019	Epidemiologic and Clinical Features of Lassa Fever Outbreak in Nigeria, January 1- May 6, 2018	317 (74.9)	106 (25.1)	Abnormal bleeding, CNS manifestations (myalgia, unconsciousness, disorientation)	-
17	Duvignaud et al. [34]	2021	Lassa fever outcomes and prognostic factors in Nigeria (LASCOPE): a prospective cohort study	448 (87.8)	62 (12.2)	Abnormal bleeding, acute kidney injury, CNS manifestations (seizure, delirium, meningeal syndrome, focal deficiency, aphasia)	-

18	Buba et al. [35]	2018	Mortality Among Confirmed Lassa Fever Cases During the 2015-2016 Outbreak in Nigeria	19 (40.4)	28 (59.6)	-	-
19	Ilesanmi et al. [36]	2022	Mortality among confirmed Lassa Fever cases in Ondo State, Nigeria, January 2017- March 2019: A cross-sectional study	246 (89.1)	30 (10.9)	-	-

## **Meta-analysis**

The pooled proportions of mortality and survival rates among participants with Lassa fever were analyzed based on findings from 18 studies. [17-36] The analysis revealed a pooled mortality rate of 19% (95% CI: 10-32), while the survival rate was found to be 70% (95% CI: 48-86). Notably, there was significant heterogeneity in the outcomes (see Figure 5 and 6).

**Insert here “Figure 5: Pooled proportion of death as an outcome of Lassa fever”**

**Insert here: “Figure 6: Pooled proportion of recovery as an outcome of Lassa fever”**



Subgroup analysis by year of publication showed that the death rate for studies published in years 2018, 2019, 2020, and 2024 were 28% (95% CI: 17-43;  $I^2 = 90\%$ ), 9% (95% CI: 2-05-07;  $I^2 = 96\%$ ), 22% (95% CI: 06-55;  $I^2 = 97\%$ ) and 85% (95% CI: 20-99;  $I^2 = 97\%$ ) (subgroup p value= 0.06) respectively, while the recovery rate of years 2018, 2019, 2020 and 2024 was 55% (95% CI: 35-74;  $I^2 = 94\%$ ), 67% (95% CI: 04-99;  $I^2 = 100\%$ ), 78% (95% CI: 45-94;  $I^2 = 97\%$ ) and 85 (95% CI: 20-99;  $I^2 = 97\%$ ) respectively (subgroup p value<0.01) (Figures 5 and 6).

Group-based analysis among the studies conducted in Nigeria showed a death rate of 13% (95% CI: 06-23;  $I^2 = 98\%$ ) in Owo and 6% (95% CI: 05-07;  $I^2 = 98\%$ ) in Abakaliki (subgroup p value<0.01), while recovery rates were 83% (95% CI: 64-93;  $I^2 = 99\%$ ) in Owo and 55% (95% CI: 03-98;  $I^2 = 98\%$ ) respectively (subgroup p value<0.01). (Figure 7-10)

**Insert here: “Figure 7: Subgroup results of death outcome by year of publication”**

**Insert here: “Figure 8: Subgroup analysis of survival outcome by year of publication”**

**Insert here: “Figure 9: Subgroup analysis of mortality outcome by locations in Nigeria”**

**Insert here: “Figure 10: Subgroup analysis of survival outcome by locations in Nigeria”**

## **Abnormal bleeding**

We conducted a meta-analysis across 10 studies that reported abnormal bleeding as a clinical outcome of Lassa fever infection. The finding showed a pooled proportion of 17% (95% CI; 9-30;  $I^2=98%$ ) (figure 8). Furthermore, the sub-group analysis result showed a pooled proportion of 22% (95% CI; 14-34;  $I^2=93%$ ) (subgroup p-value= $<0.01$ ) of abnormal bleeding across studies conducted in Owo (figure 11 and 12).

**Insert here: “Figure 11: Forest plot showing pooled proportion of abnormal bleeding as a clinical outcome of Lassa fever”**

**Insert here: “Figure 12: Subgroup analysis of abnormal bleeding by locations in Nigeria”**

## **Acute kidney injury outcome**

Acute kidney injury was reported across 7 studies as a clinical outcome for Lassa fever infection. Our findings showed a pooled proportion of 19% (95% CI; 13-26;  $I^2=89%$ ) (figure 10). Based on group analysis among studies conducted in Nigeria, the pooled proportion of 19% (95% CI; 12-28;  $I^2=91%$ ) was found in Owo (subgroup p value=0.03) (Figure 13).

**Insert here: “Figure 13: Subgroup analysis of Acute kidney injury by locations in Nigeria”**

## **CNS manifestation**

We conducted a meta-analysis across 5 studies that reported CNS manifestations as a clinical outcome of Lassa fever infection in their studies. The finding showed a pooled proportion of 15% (95% CI; 6-32;  $I^2=98%$ ) (figure 14).

**Insert here: “Figure 14: Pooled proportions of CNS manifestations as a clinical outcome of Lassa fever”**

### **Publication bias and sensitivity analysis**

The funnel plots revealed significant asymmetry (figures 15 to 19). To further evaluate the impact of individual studies on the pooled proportion, a leave-one-out analysis was performed. The results indicated only minor variations from the original summary proportion. This suggests that the conclusions derived from this meta-analysis should be interpreted with caution.

**Insert here: “Figure 15: Funnel plot of recovery as a clinical outcome of Lassa fever”**

**Insert here: “Figure 16: Funnel plot of death as a clinical outcome of Lassa fever”**

**Insert here: “Figure 17: Funnel plot of CNS manifestations as a clinical outcome of Lassa fever”**

**Insert here: “Figure 18: Funnel plot of acute kidney disease as a clinical outcome of Lassa fever”**

**Insert here: “Figure 19: Funnel plot of abnormal bleeding as a clinical outcome of Lassa fever”**

## Discussion

This systematic review and meta-analysis (SRMA) provide a comprehensive overview of the clinical outcomes of LF in West Africa. Our study revealed a pooled mortality rate of 19% (95% CI: 10-32) and common complications such as acute kidney injury, abnormal bleeding, and CNS manifestations. By synthesizing data from 19 studies involving 4177 patients across 3 high-burden countries, our study highlights the complexity of clinical outcomes of LF in the West African sub-region with significant implications for public health policy and clinical practice.

We reported studies predominantly from Nigeria (88.9%) in keeping with data that reported Nigeria as the country with the highest burden of disease in the region. [37] In Nigeria, most of the included studies were concentrated in the three LF hotspots (Owo, Irrua, and Abakaliki). The tropical climate and high temperature in Nigeria favour the multiplication and survival of the LF vector rodent (*Mastomys natalensis*) leading to increased transmission and virulence of the virus during disease epidemics amongst overcrowded rural populations. [7] This is further corroborated by evidence showing that LASV is hosted by other rodent species: the African wood mouse (*Hylomyscus pamfi*) and the Guinean multimammate mouse (*Mastomys erythroleucus*) identified in Nigeria. [6] Our study design was predominantly retrospective cohort studies (89.5%). The Lassa fever clinical course and prognostic factors in an epidemic context (LASCOPE) conducted by Duvignaud and colleagues in Owo in 2019 is the largest prospective cohort study ever conducted on Lassa fever [34] in Nigeria following the inclusion of LF in the blueprint priority list of diseases for intensified research and development (R & D) requiring urgent medical countermeasures in 2019 by the WHO. [9] Although ribavirin is used for the treatment of LF, it has yet to secure regulatory approval by the WHO as no well-designed randomized control trial

(RCT) has been conducted on LF treatment. [38] Most of the included studies were published within the last decade (2014-2024) highlighting the fact that LF was neglected for about 50 years since its discovery in 1969. The disease gained the WHO's attention in 2019 following an unusual increase of 633 laboratory-confirmed LF cases in Nigeria in 2018. Currently, efforts are being made to accelerate medical countermeasures such as rapid diagnostic tests, vaccines, and therapeutics to improve detection and prompt management of cases. [39,40] Males were more affected than females in the included studies. This may be because males are more mobile and are likely to engage in high-risk occupations (e.g., farming, hunting) that increase exposure to infected rodents in rural areas. [20] Furthermore, males generally tend to have poor healthcare-seeking behaviour leading to poor outcomes. Our review equally reported the occurrence of a high percentage of included studies (94.7%) in rural settings. Lassa fever infection commonly occurs in rural endemic areas where there is an abundance of rodent reservoirs (*mastomys natalensis*) and a narrow proximity between humans and their environment.

The pooled high mortality rate of LF of 19% (95% CI: 10-32) reported in our study highlights the considerable threat LF poses to regional public health security. This may be attributed to a low level of awareness of the disease among the public and healthcare workers often leading to missed or delayed diagnosis and treatment, particularly in the rural endemic areas. This is further worsened by the absence of readily available point-of-care assays for early diagnosis coupled with the long turnaround time due to transport and other logistic issues associated with reliance on a PCR-based diagnosis. Lassa fever symptoms are highly variable with about 80% of cases presenting with no or mild symptoms similar to other tropical febrile illnesses such as malaria, and typhoid fever. For instance, two retrospective studies conducted in Sierra Leone by Dahmane et al. [25] and Samuels et al. [29] reported high mortality rates of 61% and 63% respectively. This may be attributed to

the high virulence of the circulating LASV lineage IV found in Liberia and Sierra Leone [40] and delayed access to medical care and treatment due to weak health infrastructure. Furthermore, certain high-risk groups are more susceptible to severe disease and death. Pregnant women, especially in the third trimester, are at increased risk of maternal and fetal mortality. A study done by Okogbenin and colleagues in 2019 reported a mortality rate of 36.7% among pregnant cohorts. [30] This has been attributed to the increased replication of the virus within the rapidly dividing/highly vascularized placental tissue. Also, the similarity of Lassa fever symptoms such as nausea, headache, and abdominal pain with early pregnancy symptoms may further delay diagnosis by an unsuspecting clinician leading to poor outcomes when the infection is severe. [30] The most common complications of LF reported in this review are acute kidney injury (AKI) at a pooled proportion of 19% (95% CI; 13-26;  $I^2=89\%$ ), followed by abnormal bleeding at a pooled proportion of 17% (95% CI; 9-30;  $I^2=98\%$ ), and CNS manifestations at a pooled proportion of 15% (95% CI; 6-32;  $I^2=98\%$ ). While abnormal bleeding is a poor surrogate for Lassa fever diagnosis, its presence in a patient with acute febrile illness should increase the suspicion of LF by the clinician. The underlying mechanism of abnormal bleeding in LF remains poorly understood but has been attributed to endothelial barrier disruption, abnormal coagulation, and dysfunctional platelet aggregation. [41] Other complications of LF such as AKI and CNS involvement reflect minimal to extensive inflammation due to direct viral cytopathy and other pathogenetic mechanisms such as cytokine storm, oxidative stress, and endothelial damage. [41] Neurological complications are rare at the early stage of the disease but may be seen in late stages, in severely ill patients with high CFR. [42] Sensorineural deafness, another important but relatively uncommon complication, has been attributed to viral-induced immunological injury to the structures of the inner ear and is said to occur in 25% of cases. An animal study (murine model)

has shown that LF causes damage to the cochlear hair cells as well as degeneration of the spiral ganglion cells of the auditory nerve. [43]

Our study had a few limitations. We only screened studies published in the English Language between 2004 to 2024 and within the West African region. This time and language restriction could impact the generalizability of our study findings. Furthermore, there was significant variability between the studies such as differences in study design, population characteristics, or healthcare settings which could affect the pooled outcome and may potentially impact the findings of the study.

## **Conclusions**

In conclusion, our findings suggest that one out of every five patients hospitalized for Lassa fever is likely to die in West Africa. The high pooled mortality rate and severe complications reported in this study underscore the need for risk communication and community engagement as well as (re)training of healthcare workers to improve early diagnosis and case management of LF. Further research is needed to urgently accelerate the development of medical countermeasures such as effective vaccines, potent antiviral therapies, and novel diagnostic assays to address this emerging viral threat.

## **Acknowledgments**

The authors appreciate the support given by the Nigerian Institute for Medical Research Foundation [Grant Number NF-GMTP-24-152809] for the study.

## **References**

1. World Health Organization - Lassa fever. Available from: <https://www.who.int/news-room/fact-sheets/detail/lassa-fever> (Accessed October 5, 2024)
2. Lecompte E, Fichet-Calvet E, Daffis S, Koulémou K, Sylla O, Kourouma F, *et al.* *Mastomys natalensis* and Lassa Fever, West Africa. *Emerg Infect Dis.* 2006 Dec;12(12):1971–4.
3. Adewuyi GM, Fowotade A, Adewuyi BT. Lassa Fever: Another Infectious Menace. *African Journal of Clinical and Experimental Microbiology.* 2009;10(3).
4. Epidemiological trends of Lassa fever in Nigeria from 2015-2021: A review - John-Ugwuanya A. Grace, Ifunanya J. Egoh, Nnenna Udensi, 2021. Available from: <https://journals.sagepub.com/doi/10.1177/20499361211058252> (Accessed October 5, 2024)
5. Ehichioya DU, Hass M, Ölschläger S, Becker-Ziaja B, Chukwu COO, Coker J, *et al.* Lassa Fever, Nigeria, 2005–2008. *Emerg Infect Dis.* 2010 Jun;16(6):1040–1.
6. Olayemi A, Cadar D, Magassouba N, Obadare A, Kourouma F, Oyeyiola A, *et al.* New Hosts of The Lassa Virus. *Sci Rep.* 2016 May 3;6:25280.
7. Olayemi A, Fichet-Calvet E. Systematics, Ecology, and Host Switching: Attributes Affecting Emergence of the Lassa Virus in Rodents across Western Africa. *Viruses.* 2020 Mar;12(3):312. Available from: <https://www.mdpi.com/1999-4915/12/3/312> (Accessed October 6, 2024)



8. Lassa Fever Research and Development (R&D) Roadmap - DRAFT FOR PUBLIC COMMENT. Available from: <https://www.who.int/publications/m/item/lassa-fever-research-and-development-roadmap-May> (Accessed October 6, 2024)
9. R&D Blue print and Ebola/Marburg. Available from: <https://www.who.int/teams/blueprint/lassa-fever> (Accessed October 6, 2024).
10. Moore KA, Ostrowsky JT, Mehr AJ, Johnson RA, Ulrich AK, Moua NM, *et al.* Lassa fever research priorities: towards effective medical countermeasures by the end of the decade. *The Lancet Infectious Diseases*. 2024 Jul 1;0(0).
11. Participants in Nigeria vaccinated in first-ever Phase 2 Lassa fever vaccine clinical trial | CEPI. Available from: <https://cepi.net//participants-nigeria-vaccinated-first-ever-phase-2-lassa-fever-vaccine-clinical-trial> (Accessed October 6, 2024)
12. First-ever Phase 2 Lassa vaccine clinical trial now fully active across West Africa - IAVI. Available from: <https://www.iavi.org/features/iavi-c105-lassa-vaccine-clinical-trial-fully-active/> (Accessed October 5, 2024).
13. Cross RW, Heinrich ML, Fenton KA, Borisevich V, Agans KN, Prasad AN, *et al.* A human monoclonal antibody combination rescues nonhuman primates from advanced disease caused by the major lineages of Lassa virus. *Proc Natl Acad Sci U S A*;120(34):e2304876120.
14. Oestereich L, Rieger T, Lüdtke A, Ruibal P, Wurr S, Pallasch E, *et al.* Efficacy of Favipiravir Alone and in Combination with Ribavirin in a Lethal, Immunocompetent Mouse Model of Lassa Fever. *The Journal of Infectious Diseases*. 2016 Mar 15;213(6):934–8.

15. Okokhere P, Colubri A, Azubike C, Iruolagbe C, Osazuwa O, Tabrizi S, *et al.* Clinical and laboratory predictors of Lassa fever outcome in a dedicated treatment facility in Nigeria: a retrospective, observational cohort study. *The Lancet Infectious Diseases*. 2018 Jun;18(6):684–95.
16. Page MJ, McKenzie JE, Bossuyt PM, Boutron I, Hoffmann TC, Mulrow CD, *et al.* The PRISMA 2020 statement: an updated guideline for reporting systematic reviews. *BMJ*. 2021 Mar 29;372:n71.
18. Chen X, Orom H, Hay JL, Waters EA, Schofield E, Li Y, Kiviniemi MT. Differences in Rural and Urban Health Information Access and Use. *J Rural Health*. 2019 Jun;35(3):405-417.
17. SciELO - Brazil - The Joanna Briggs Institute approach for systematic reviews The Joanna Briggs Institute approach for systematic reviews. Available from: <https://www.scielo.br/j/rlae/a/3X4PW3B8fzcrpH6YvgZhCJH/?lang=en> (Accessed October 5 2024)
18. Duvignaud A, Etafo IC, Jaspard M, Salau Q, Serra B, Kareem AJ, *et al.* Presentation and Outcomes of Lassa Fever in Children in Nigeria: A Prospective Cohort Study (LASCOPE). *Journal of the Pediatric Infectious Diseases Society*. 2024 Aug 21;pii:083.
19. Orji ML, Onyire N, Unigwe U, Ajayi N, Nwidi D, Odey E, *et al.* Prevalence, Pattern and Outcome of Pediatric Lassa Fever Disease (LFD) in a Tertiary Hospital, Southeast Nigeria. 2020. Available from: <https://www.preprints.org/manuscript/202005.0269/v1> (Accessed September 18 2024)

20. Saleh M, Dan-Nwafor C, Ihekweazu C, Ipadeola O, Ukponu W, et al. (2020) Exposure Incidents and Outcome of Lassa Fever Virus (LASV) Infection among Healthcare Workers in Nigeria, 2019. *J Infect Dis Epidemiol* 6:168.
21. Abdu A, Ibrahim MM, Muhammad LS, Audi YK, Sabo UM, Yusuf JB. Factors Affecting Outcome in Reverse Transcriptase-Polymerase Chain Reaction-Positive Lassa Fever Patients with Acute Kidney Injury: A Retrospective Analysis. *Nigerian Journal of Medicine*. 2022 Sep;31(5):544–8.
22. Owhin SO, Abejegah C, Olatunde L, Akhideno PE, Emorinken A, Adelabu Y, et al. The Impact and Morphology of Anaemia among Lassa Fever Patients Treated in a Dedicated Treatment Center in South West Nigeria. *J Trop Med Health*. 2020; 4: 148.
23. Akpede GO, Asogun DA, Okogbenin SA, Dawodu SO, Momoh MO, Dongo AE, et al. Caseload and Case Fatality of Lassa Fever in Nigeria, 2001–2018: A Specialist Center’s Experience and Its Implications. *Front Public Health*. 2019 Jun 25;7:170.
24. Okokhere P, Colubri A, Azubike C, Iruolagbe C, Osazuwa O, Tabrizi S, et al. Clinical and laboratory predictors of Lassa fever outcome in a dedicated treatment facility in Nigeria: a retrospective, observational cohort study. *Lancet Infect Dis*. 2018 Jun;18(6):684-695.
25. Dahmane A, van Griensven J, Van Herp M, Van den Bergh R, Nzomukunda Y, Prior J, et al. Constraints in the diagnosis and treatment of Lassa Fever and the effect on mortality in hospitalized children and women with obstetric conditions in a rural district hospital in Sierra Leone. *Transactions of the Royal Society of Tropical Medicine and Hygiene*. 2014 Mar 1;108(3):126–32.

26. Dwalu E, Jetoh RW, Shobayo BI, Pewu I, Taweh F, Wilson-Sesay HW, *et al.* Trend of Lassa fever cases and factors associated with mortality in Liberia, 2016 - 2021: a secondary data analysis. *Pan Afr Med J.* 2024;47.
27. Shehu NY, Gomerep SS, Isa SE, Iraoyah KO, Mafuka J, Bitrus N, *et al.* Lassa Fever 2016 Outbreak in Plateau State, Nigeria—The Changing Epidemiology and Clinical Presentation. *Front Public Health.* 2018 Aug 29;6.
28. Adetunji AE, Ayenale M, Akhigbe I, Akerele LO, Isibor E, Idialu J, *et al.* Acute kidney injury and mortality in pediatric Lassa fever versus the question of access to dialysis. *International Journal of Infectious Diseases.* 2021 Feb;103:124–31.
29. Samuels RJ, Moon TD, Starnes JR, Alhasan F, Gbakie M, Goba A, *et al.* Lassa Fever among Children in Eastern Province, Sierra Leone: A 7-year Retrospective Analysis (2012–2018). *The American Journal of Tropical Medicine and Hygiene.* 2021 Feb 3;104(2):585–92.
30. Okogbenin S, Okoeguale J, Akpede G, Colubri A, Barnes KG, Mehta S, *et al.* Retrospective Cohort Study of Lassa Fever in Pregnancy, Southern Nigeria. *Emerg Infect Dis.* 2019 Aug;25(8):1494–500.
31. Chika-Igwenyi NM, Harrison RE, Psarra C, Gil-Cuesta J, Gulamhusein M, Onwe EO, *et al.* Early onset of neurological features differentiates two outbreaks of Lassa fever in Ebonyi state, Nigeria during 2017–2018. Marzi A, editor. *PLoS Negl Trop Dis.* 2021 Mar 8;15(3):e0009169.

32. Nwafor IE, Ogah OE, Ojide CK, Odeh EC, Abu AM, Chika-Igwenyi NM, *et al.* Prevalence and outcome of Lassa fever among hospitalized patients in Ebonyi State, Nigeria, 2018–2019. *Virus Research*. 2020 Aug;285:198000.
33. Ilori EA, Furuse Y, Ipadeola OB, Dan-Nwafor CC, Abubakar A, Womi-Eteng OE, *et al.* Epidemiologic and Clinical Features of Lassa Fever Outbreak in Nigeria, January 1–May 6, 2018. *Emerg Infect Dis*. 2019 Jun;25(6):1066–74.
34. Duvignaud A, Jaspard M, Etafo IC, Gabillard D, Serra B, Abejegah C, *et al.* Lassa fever outcomes and prognostic factors in Nigeria (LASCOPE): a prospective cohort study. *The Lancet Global Health*. 2021 Apr;9(4):e469–78.
35. Buba MI, Dalhat MM, Nguku PM, Waziri N, Mohammad JO, Bomoi IM, *et al.* Mortality Among Confirmed Lassa Fever Cases During the 2015–2016 Outbreak in Nigeria. *Am J Public Health*. 2018 Feb;108(2):262–4.
36. Ilesanmi OS, Ayodeji OO, Adedosu NA, Ojo OE, Abejegah C, Jegede TO, *et al.* Mortality among confirmed Lassa Fever cases in Ondo State, Nigeria, January 2017–March 2019: *J Comm Health Research*. 2022 Apr; 11(1).
37. Dalhat MM, Olayinka A, Meremikwu MM, Dan-Nwafor C, Iniobong A, Ntoimo LF, *et al.* Epidemiological trends of Lassa fever in Nigeria, 2018–2021. *PLoS ONE*. 2022 Dec 30;17(12):e0279467.
38. Ribavirin for the treatment of Lassa fever: A systematic review and meta-analysis. *International Journal of Infectious Diseases*. 2019 Oct 1;87:15–20.

39. Groger M, Okwaraeke K, Akhideno P, Pahlmann M, Kleist C, Mbavu C, *et al.* OA-652 Safety and tolerability of favipiravir for the treatment of Lassa fever: a randomized controlled open-label phase II clinical trial. *BMJ Global Health*. 2023 Dec 1;8(Suppl 10).
40. Murphy HL, Ly H. Pathogenicity and virulence mechanisms of Lassa virus and its animal modeling, diagnostic, prophylactic, and therapeutic developments. *Virulence*. 12(1):2989–3014.
41. Horton LE, Cross RW, Hartnett JN, Engel EJ, Sakabe S, Goba A, *et al.* Endotheliopathy and Platelet Dysfunction as Hallmarks of Fatal Lassa Fever - Volume 26, Number 11—November 2020 - *Emerg Infect Dis*. Available from: [https://wwwnc.cdc.gov/eid/article/26/11/19-1694\\_article](https://wwwnc.cdc.gov/eid/article/26/11/19-1694_article) (Accessed October 6 2024)
42. Okokhere PO, Bankole IA, Akpede GO. Central nervous system manifestations of Lassa fever in Nigeria and the effect on mortality. *Journal of the Neurological Sciences*. 2013 Oct 15;333:e604.
43. Chime EN, Chime PE, Nwosu JN. Hearing Loss in Lassa Fever: A Systematic Review. *Open Journal of Preventive Medicine*. 2022 Nov 11;12(11):239–47.

## Supporting information

S1 Text. Search strategy

S2 Text. PRISMA checklist

S3 Text. Data extraction sheet

### Supplementary File 1: Search Strategy

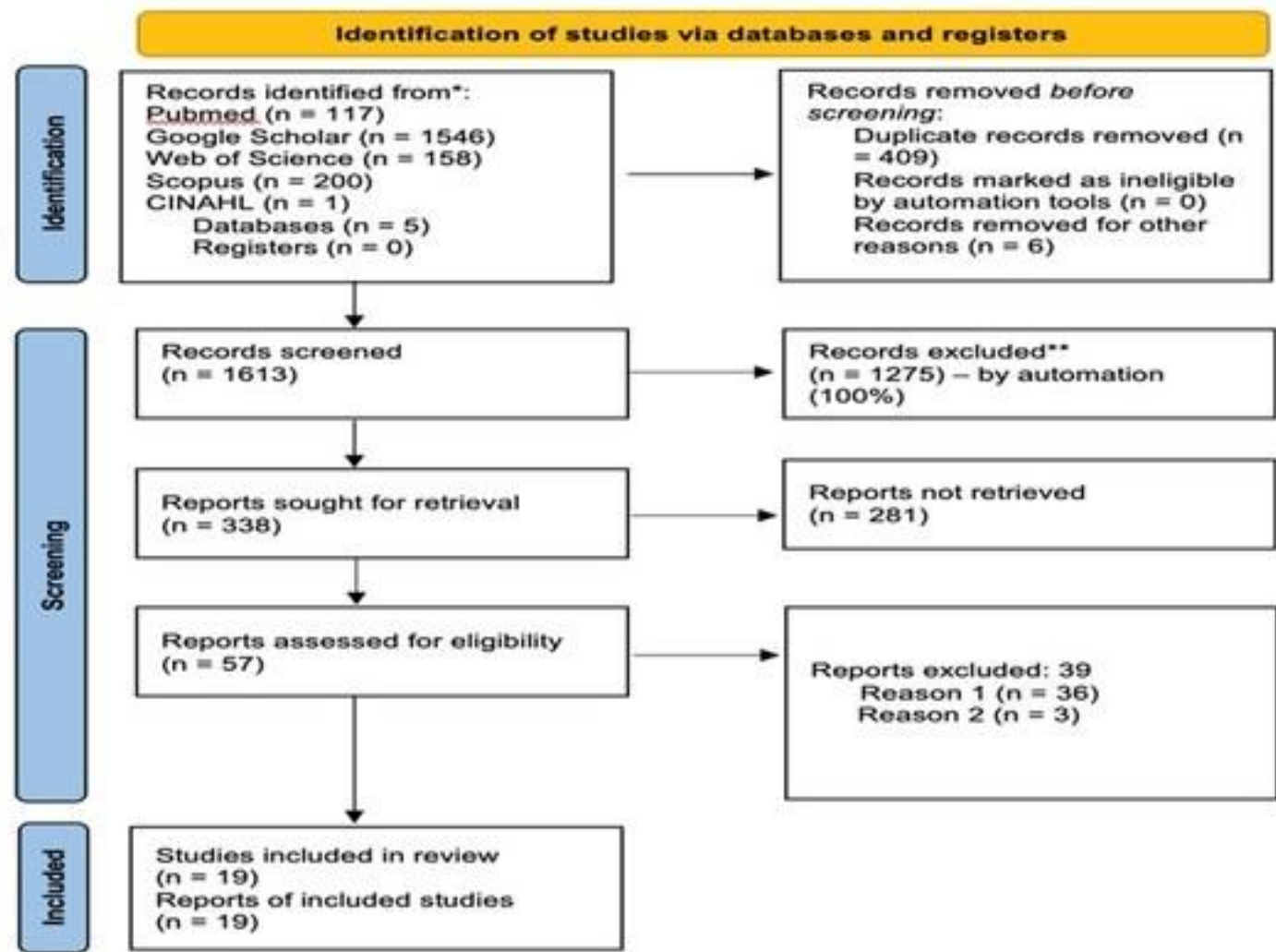
S/No	Keywords	Search strategy	Results
#1	Lassa fever	Search: (((("Lassa fever infection"[Title/Abstract]) OR ("Lassa fever virus"[Title/Abstract])) OR ("viral haemorrhagic fever"[Title/Abstract])) OR ("Arenaviruses"[Title/Abstract])) OR ("Lassa"[Title/Abstract])	2575
#2	Clinical outcome	Search: (((("clinical outcome*" [Title/Abstract]) OR ("mortality"[Title/Abstract])) OR ("death"[Title/Abstract])) OR (recovery [Title/Abstract])) OR (survival [Title/Abstract])) OR ("adverse outcome*" [Title/Abstract])	3,492,630
#3	West Africa	Search: Nigeria[Title/Abstract] OR Niger[Title/Abstract] OR Liberia[Title/Abstract] OR Guinea[Title/Abstract] OR Sierra Leone[Title/Abstract] OR Togo[Title/Abstract] OR Burkina Faso[Title/Abstract] OR Benin[Title/Abstract] OR Ghana[Title/Abstract] OR Senegal[Title/Abstract] OR The Gambia[Title/Abstract] OR	209,643

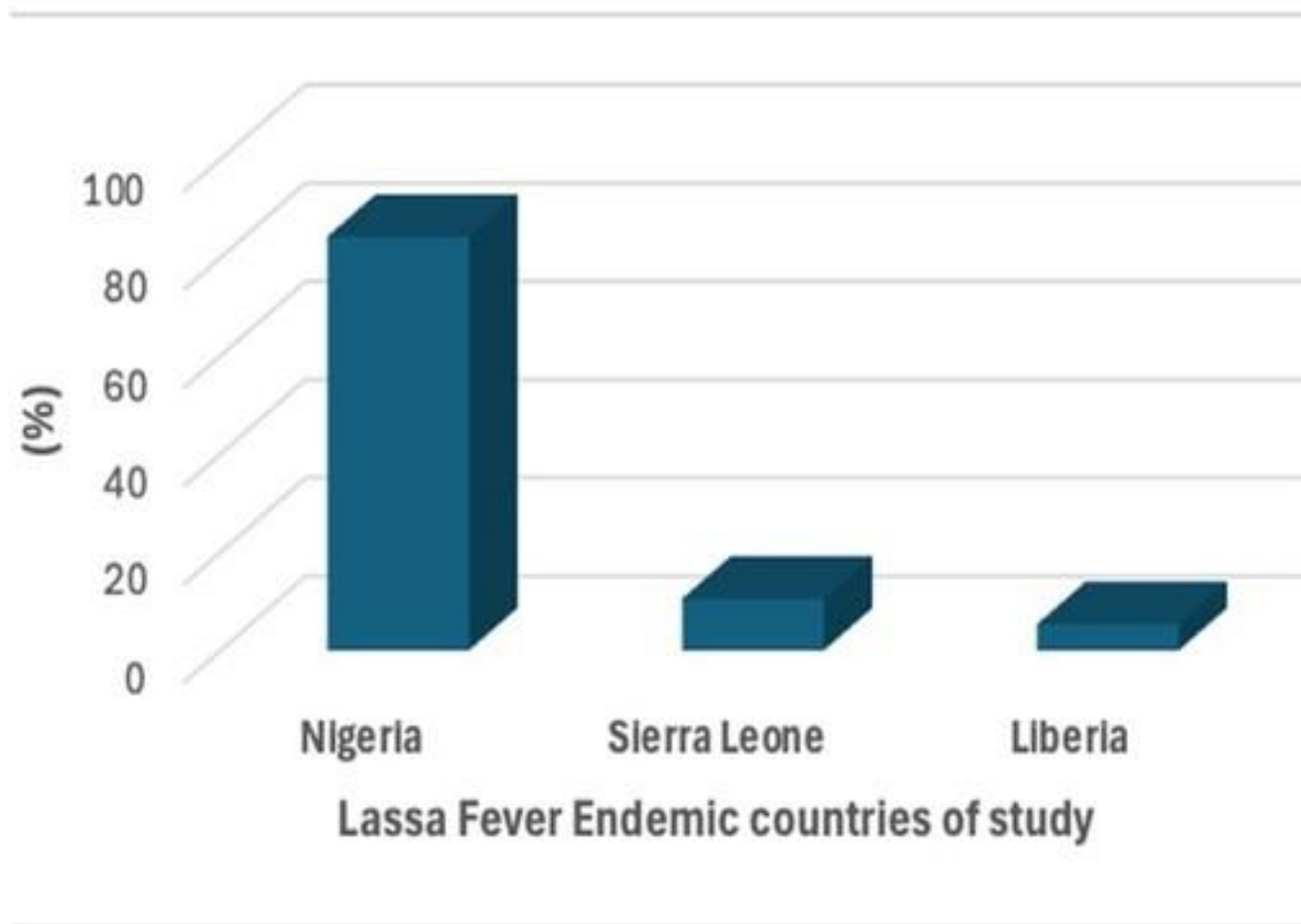
		<b>Gambia[Title/Abstract] OR Cote d' Ivoire[Title/Abstract] OR Cabo Verde[Title/Abstract] OR Guinea-Bissau[Title/Abstract] OR Mali[Title/Abstract]</b>	
#5	Filter	Search: ((((((("Lassa fever infection"[Title/Abstract]) OR ("Lassa fever virus"[Title/Abstract])) OR ("viral haemorrhagic fever"[Title/Abstract])) OR ("Arenaviruses"[Title/Abstract])) OR ("Lassa"[Title/Abstract])) AND (((("clinical outcome*"[Title/Abstract]) OR ("mortality"[Title/Abstract])) OR ("death"[Title/Abstract])) OR (recovery[Title/Abstract])) OR (survival[Title/Abstract])) OR ("adverse outcome*"[Title/Abstract]))) AND (Nigeria[Title/Abstract] OR Niger[Title/Abstract] OR Liberia[Title/Abstract] OR Guinea[Title/Abstract] OR Sierra Leone[Title/Abstract] OR Togo[Title/Abstract] OR Burkina Faso[Title/Abstract] OR Benin[Title/Abstract] OR Ghana[Title/Abstract] OR Senegal[Title/Abstract] OR The Gambia[Title/Abstract] OR	117



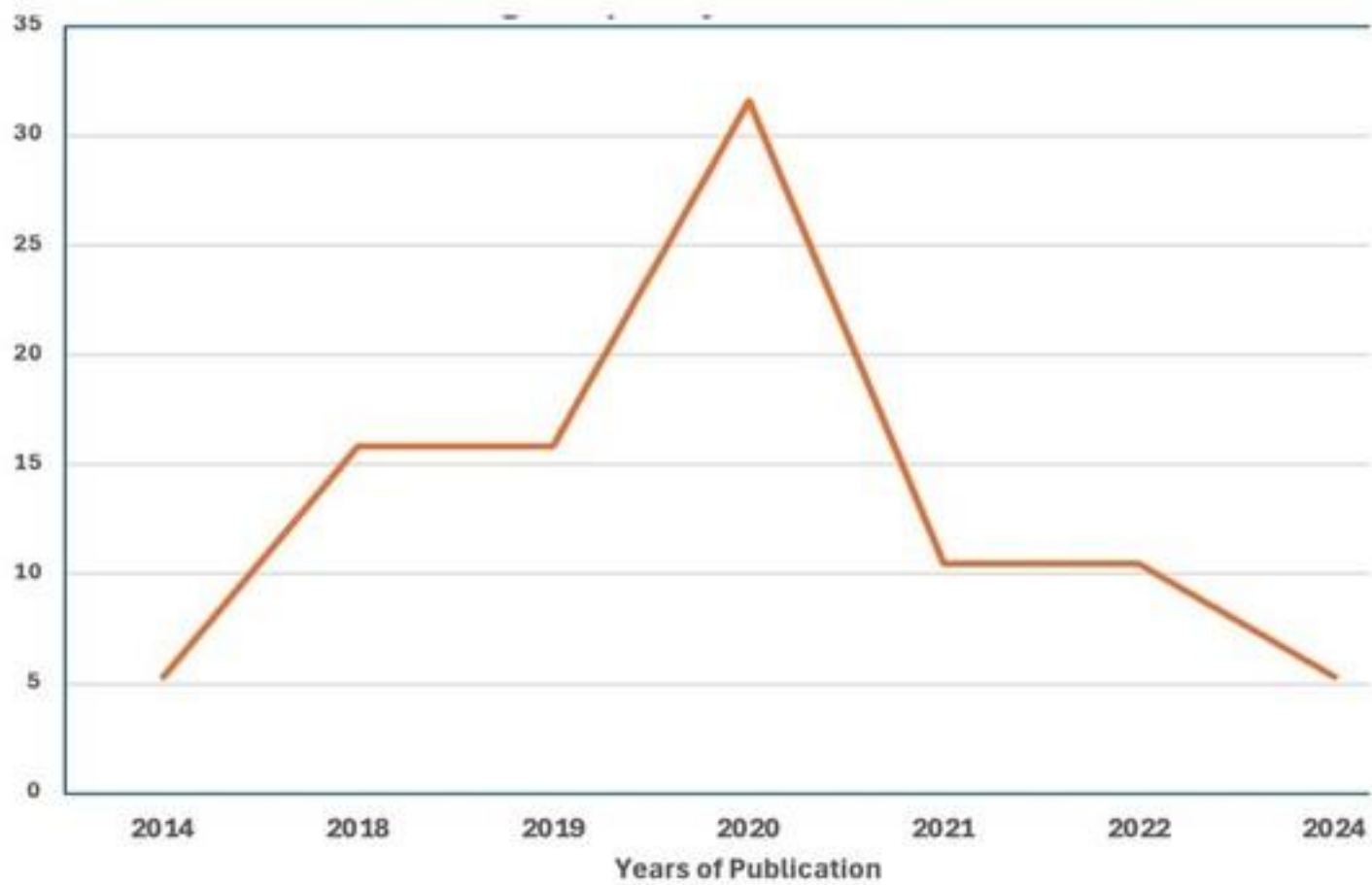
		<b>Gambia[Title/Abstract] OR Cote d' Ivoire[Title/Abstract] OR Cabo Verde[Title/Abstract] OR Guinea-Bissau[Title/Abstract] OR Mali[Title/Abstract]) Filters: from 2004 – 2024</b>	
--	--	-----------------------------------------------------------------------------------------------------------------------------------------------------------------------------------	--



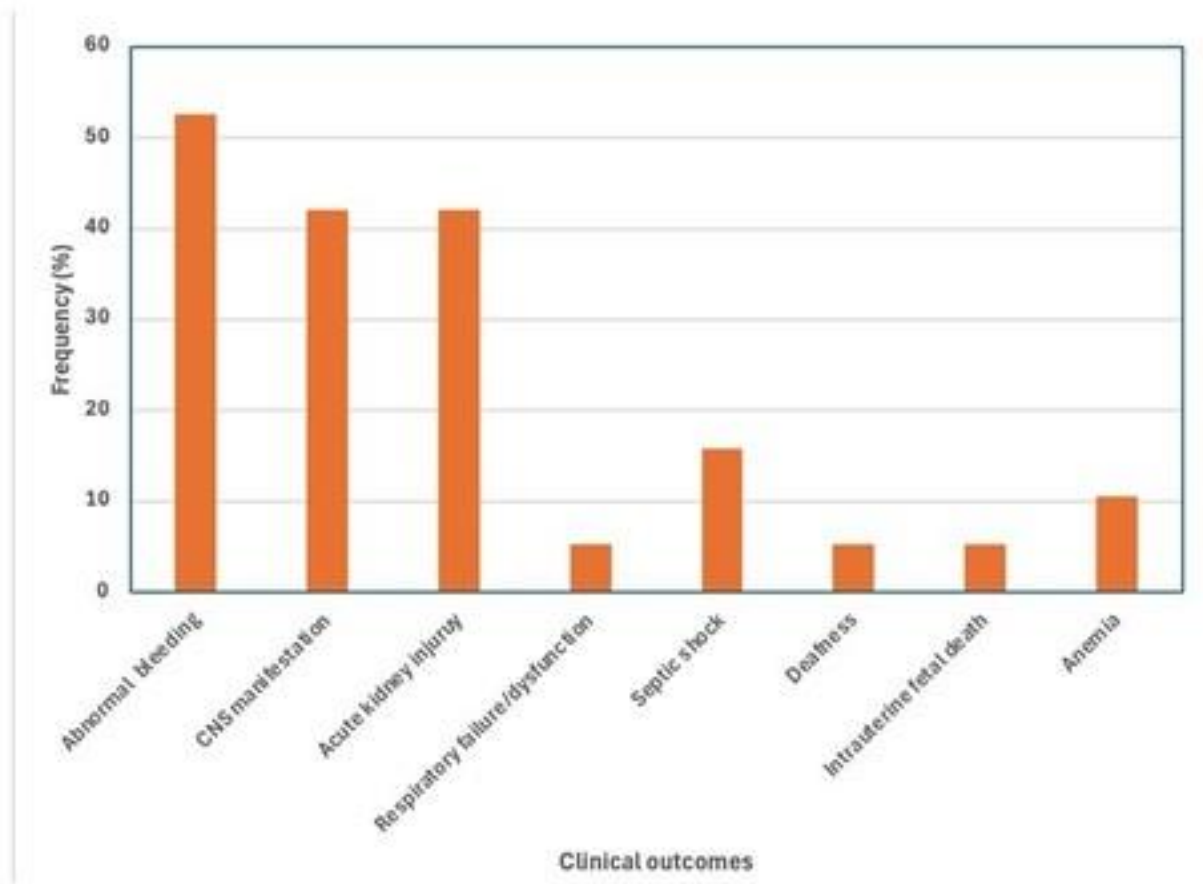




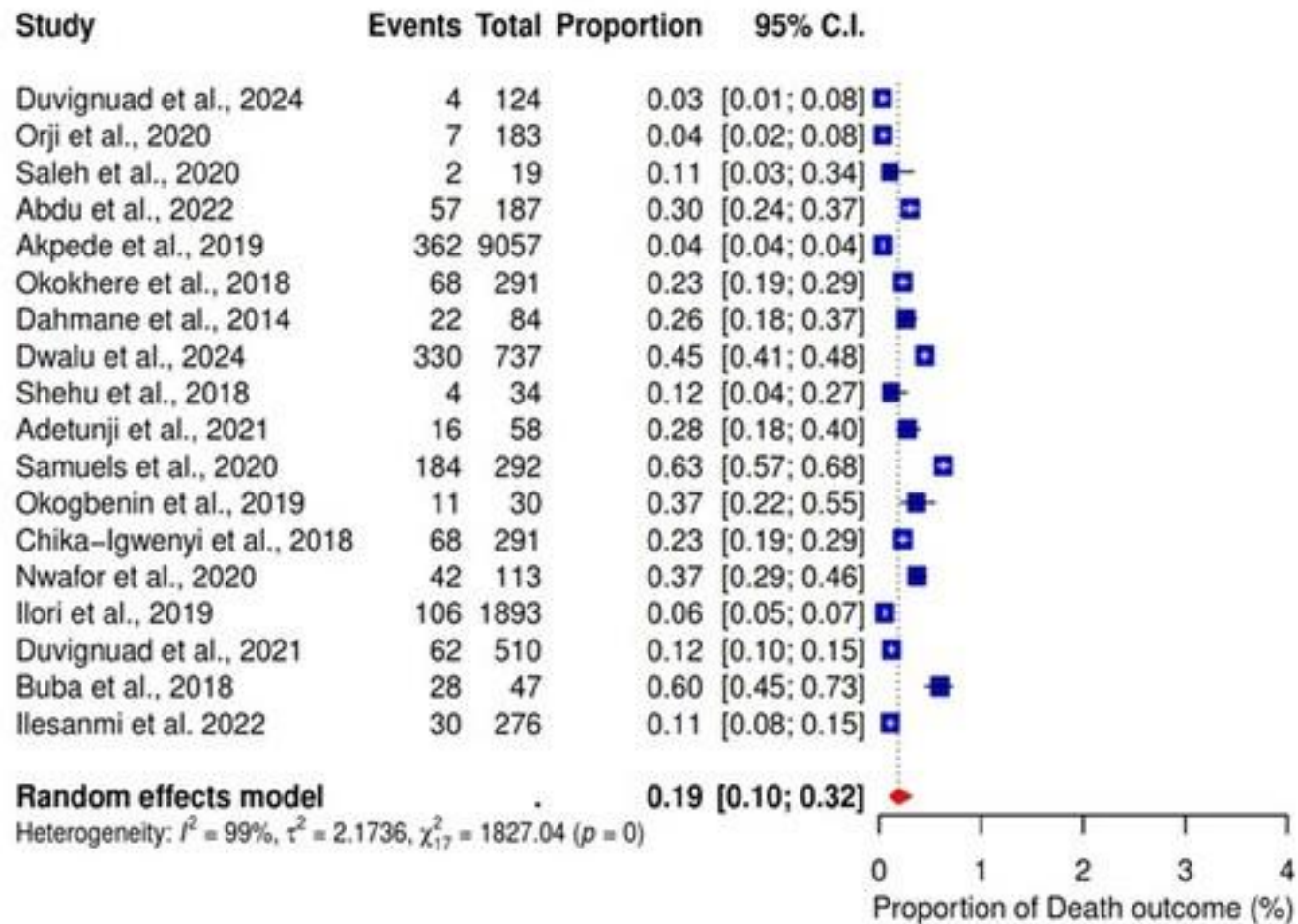
Figure



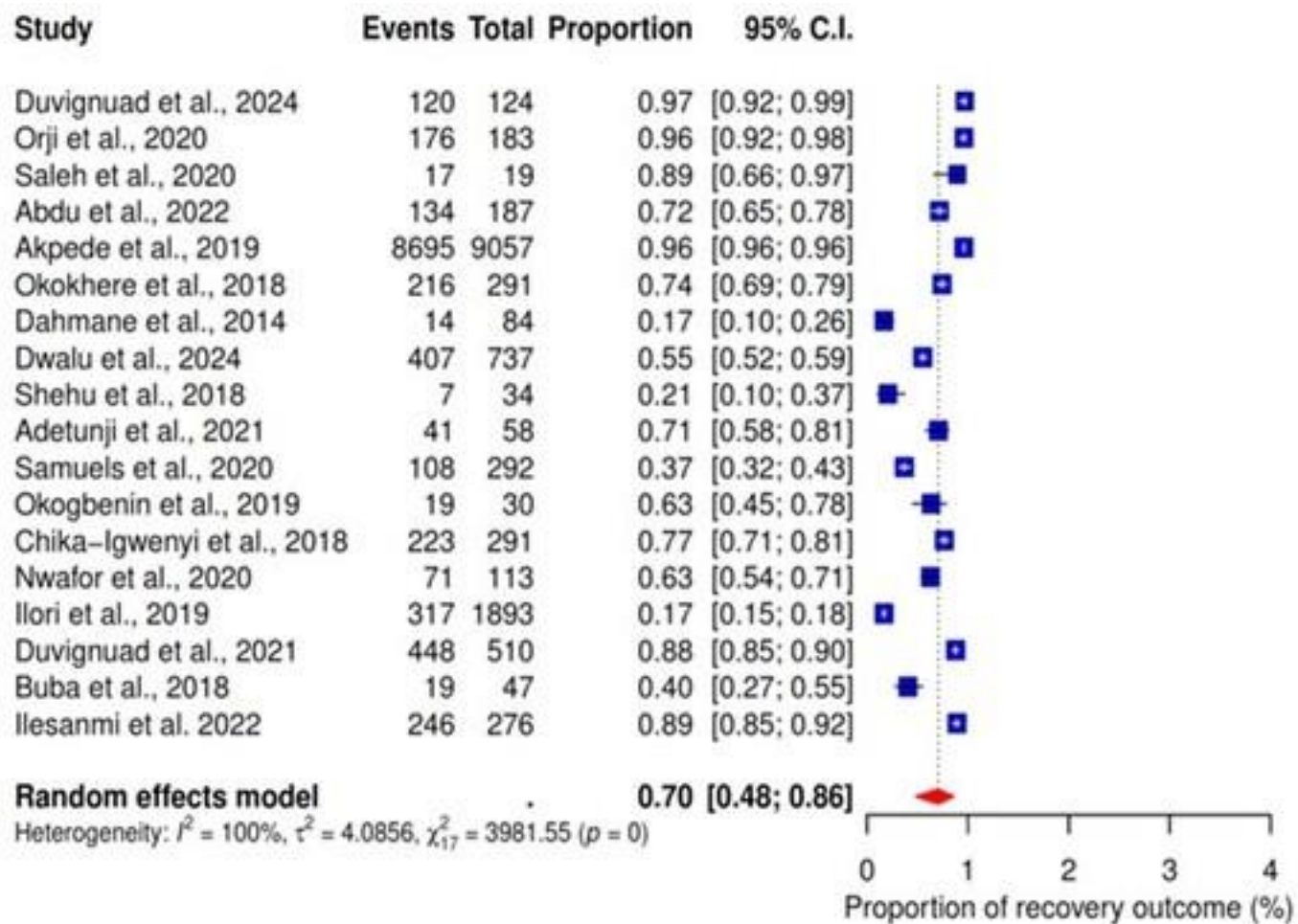
Figure



Figure

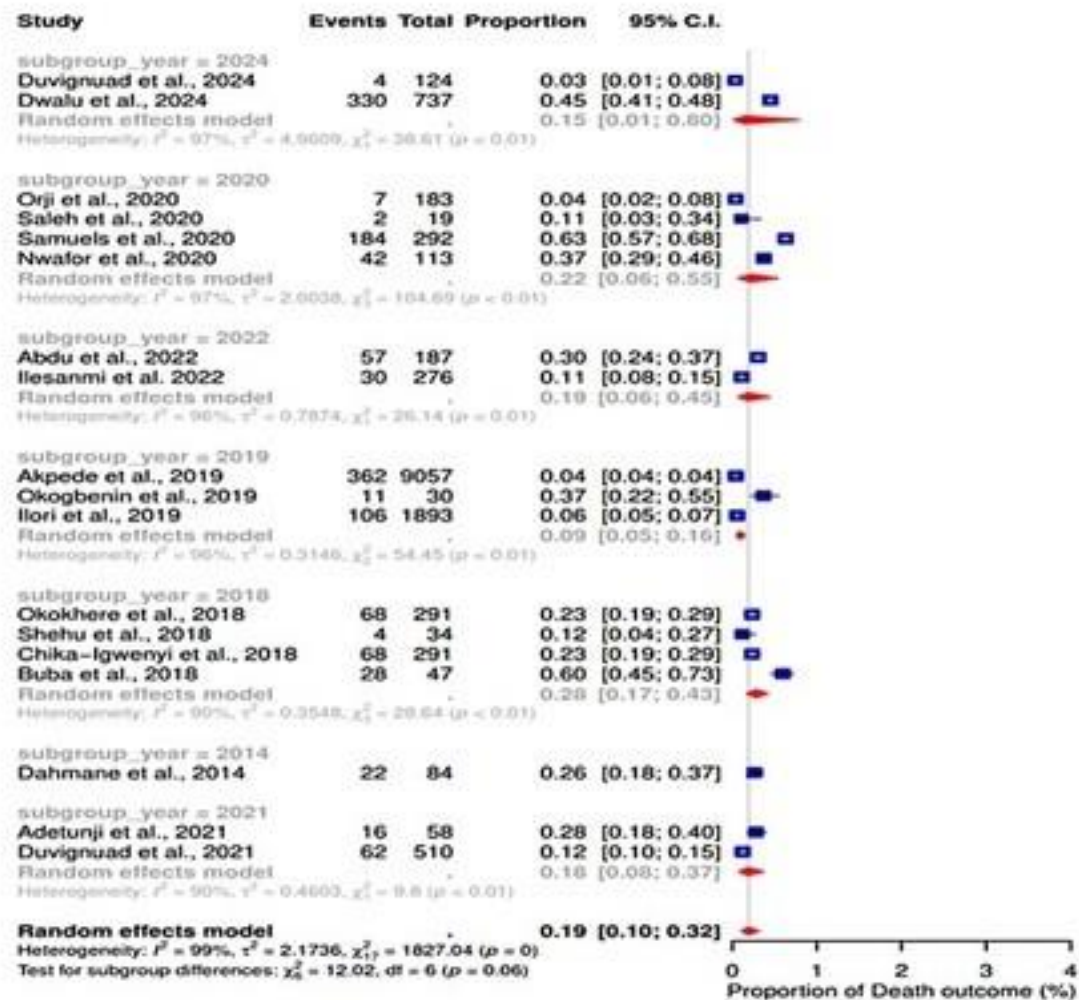


Figure

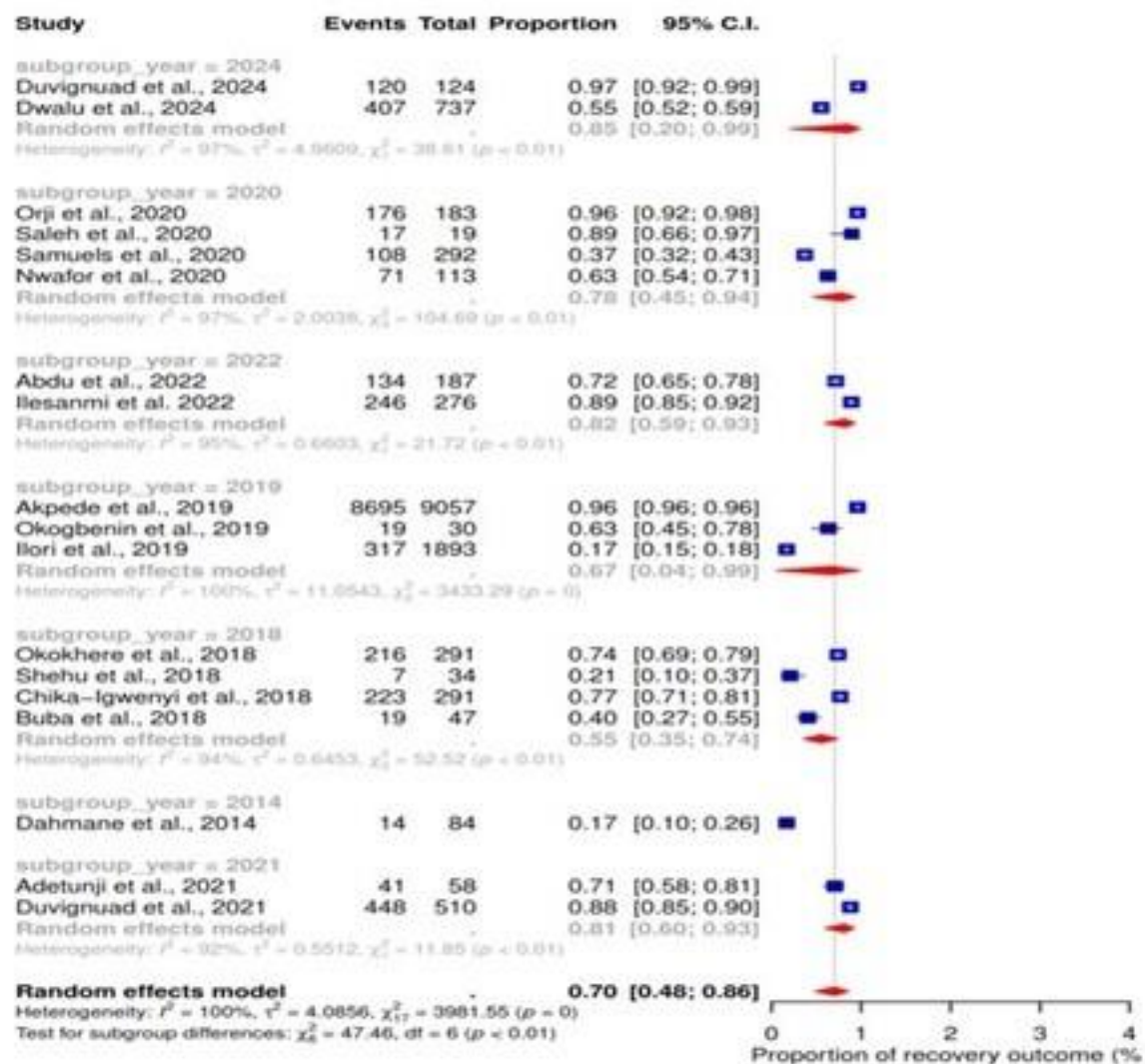


Figure

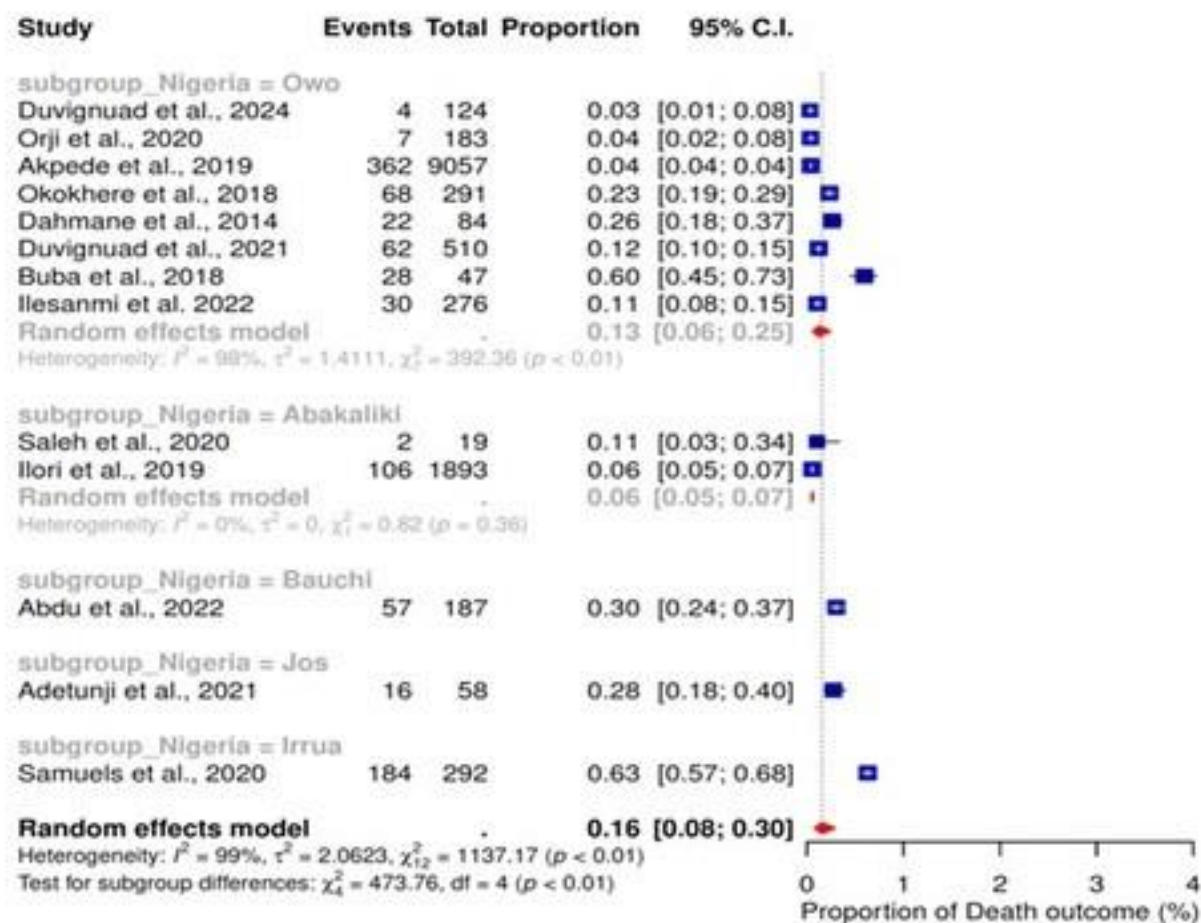




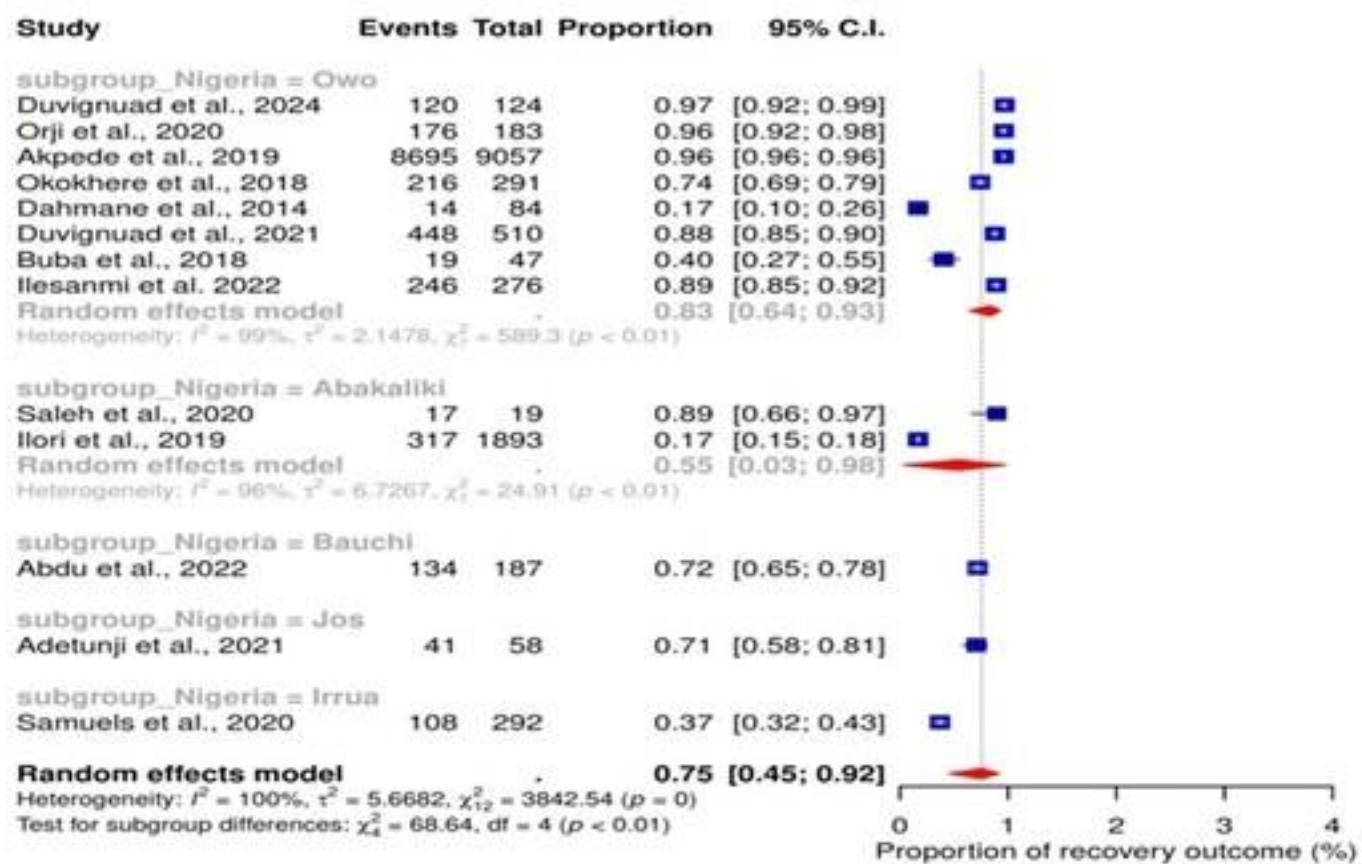
Figure



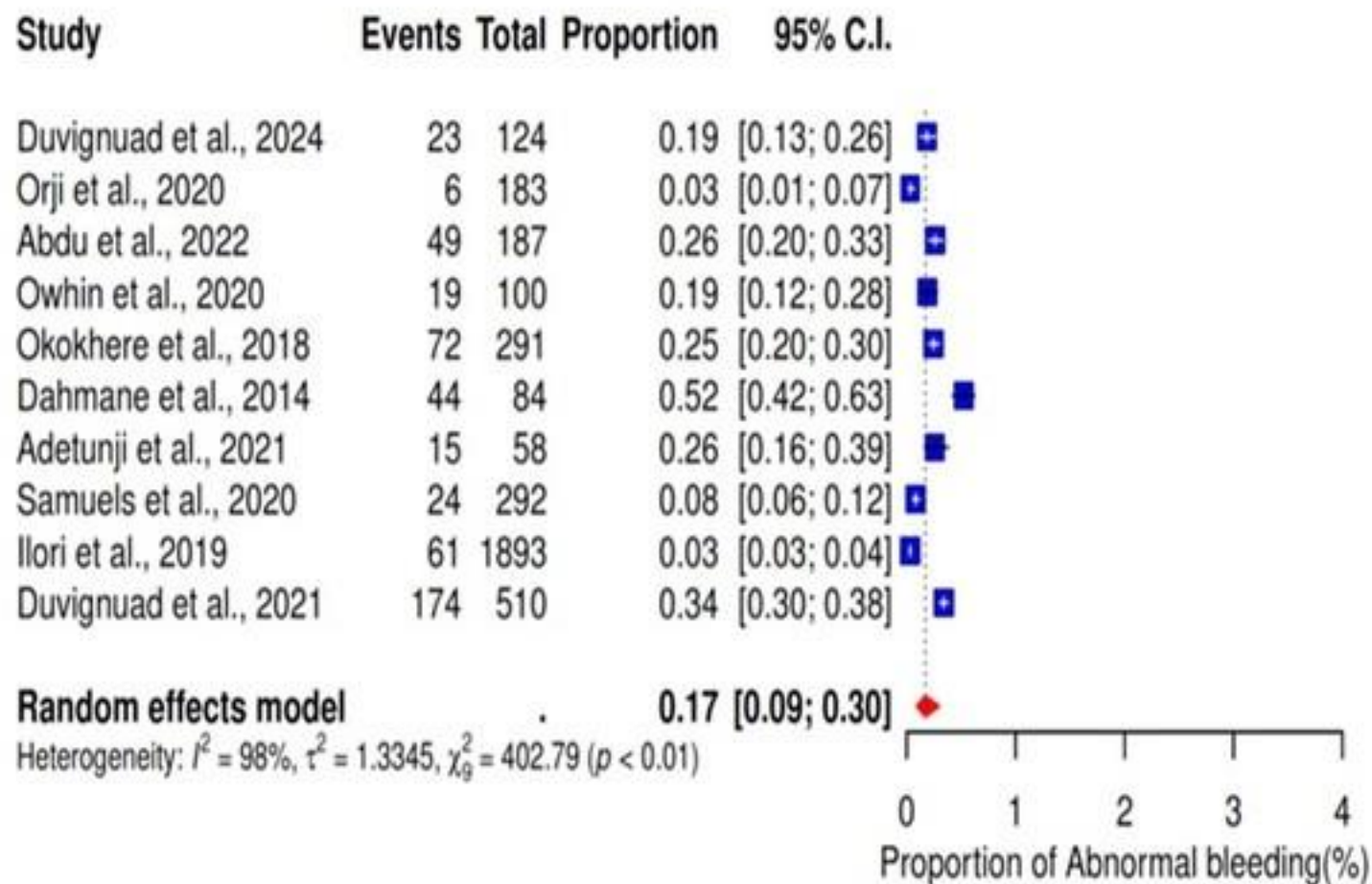
Figure



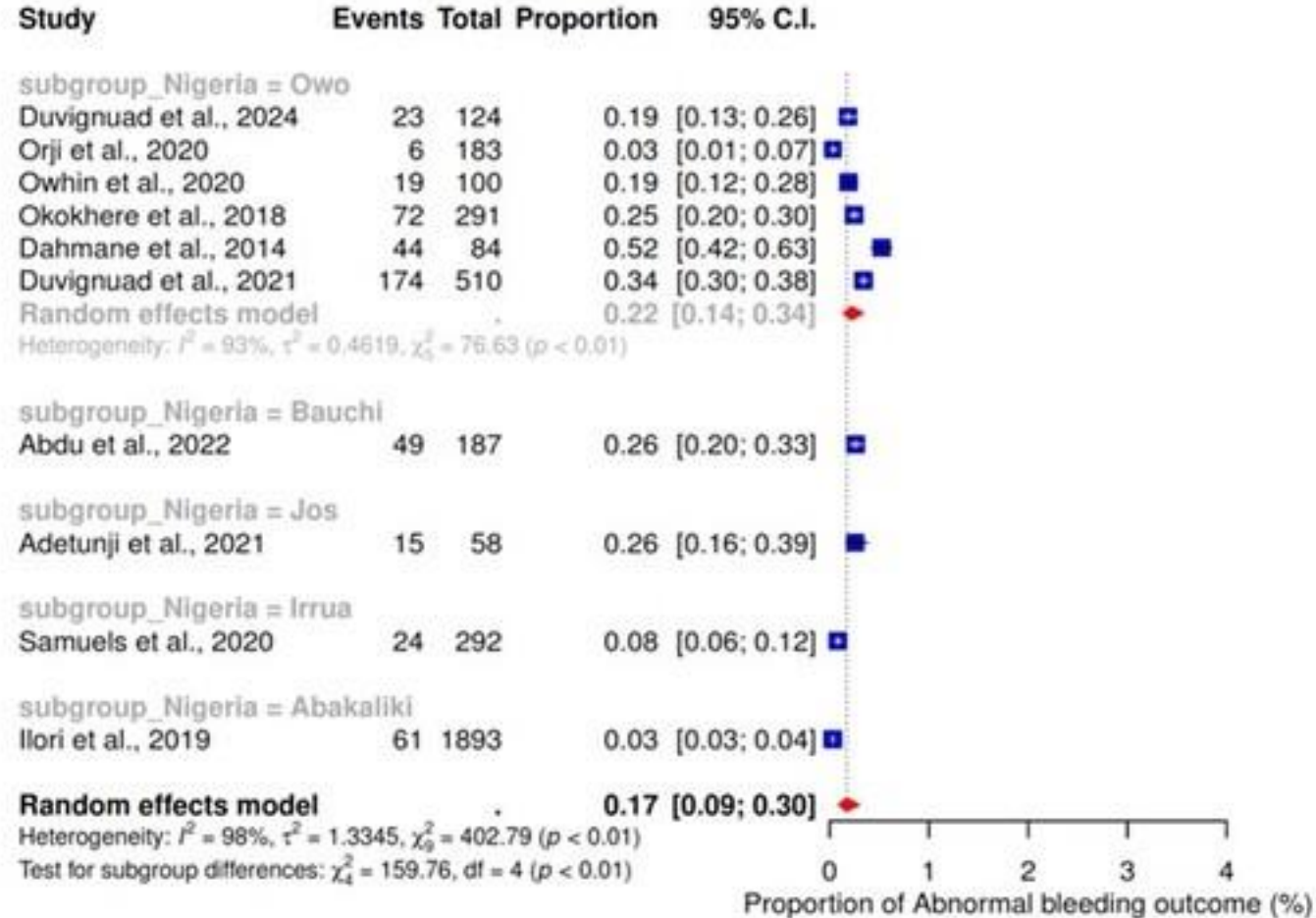
Figure



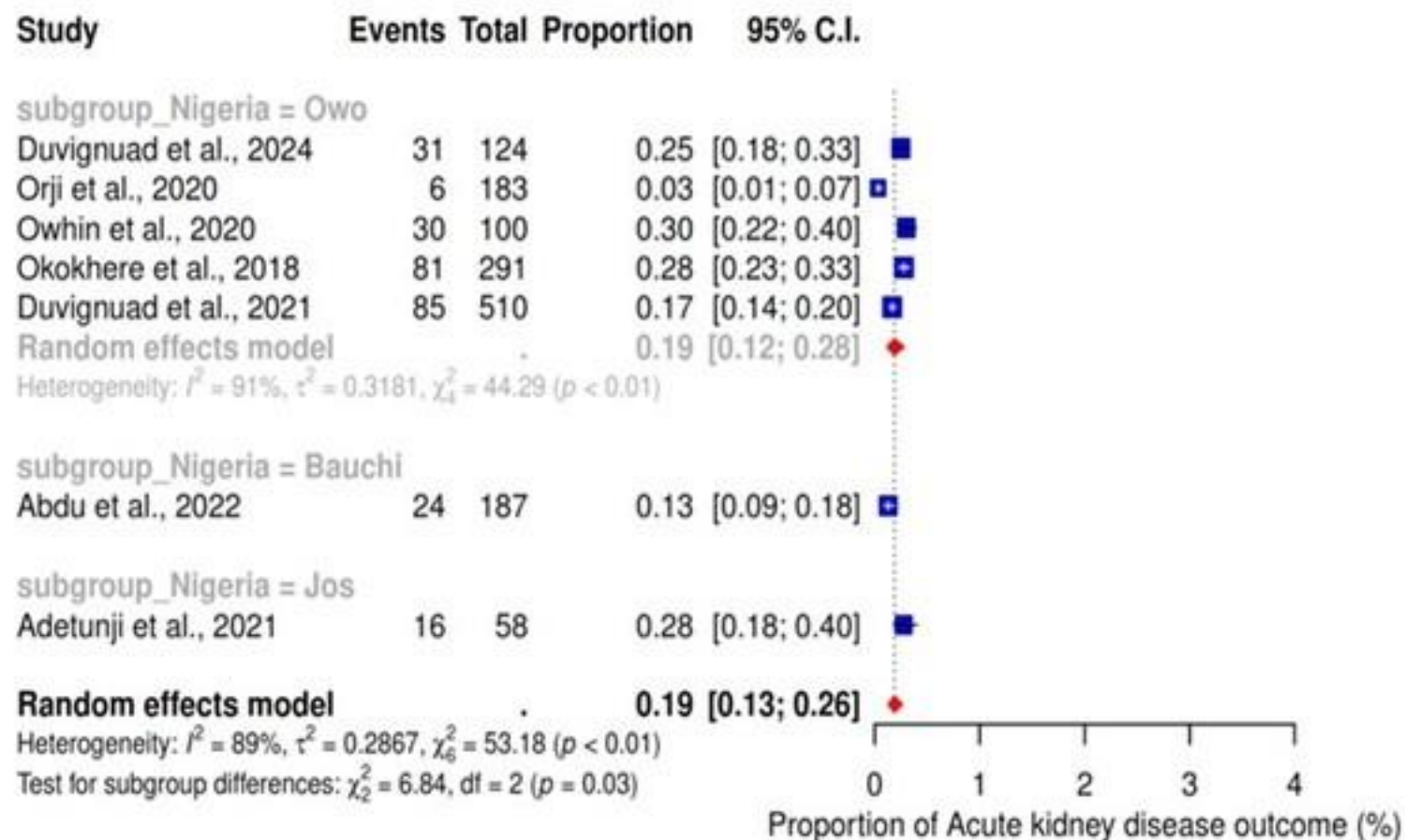
Figure



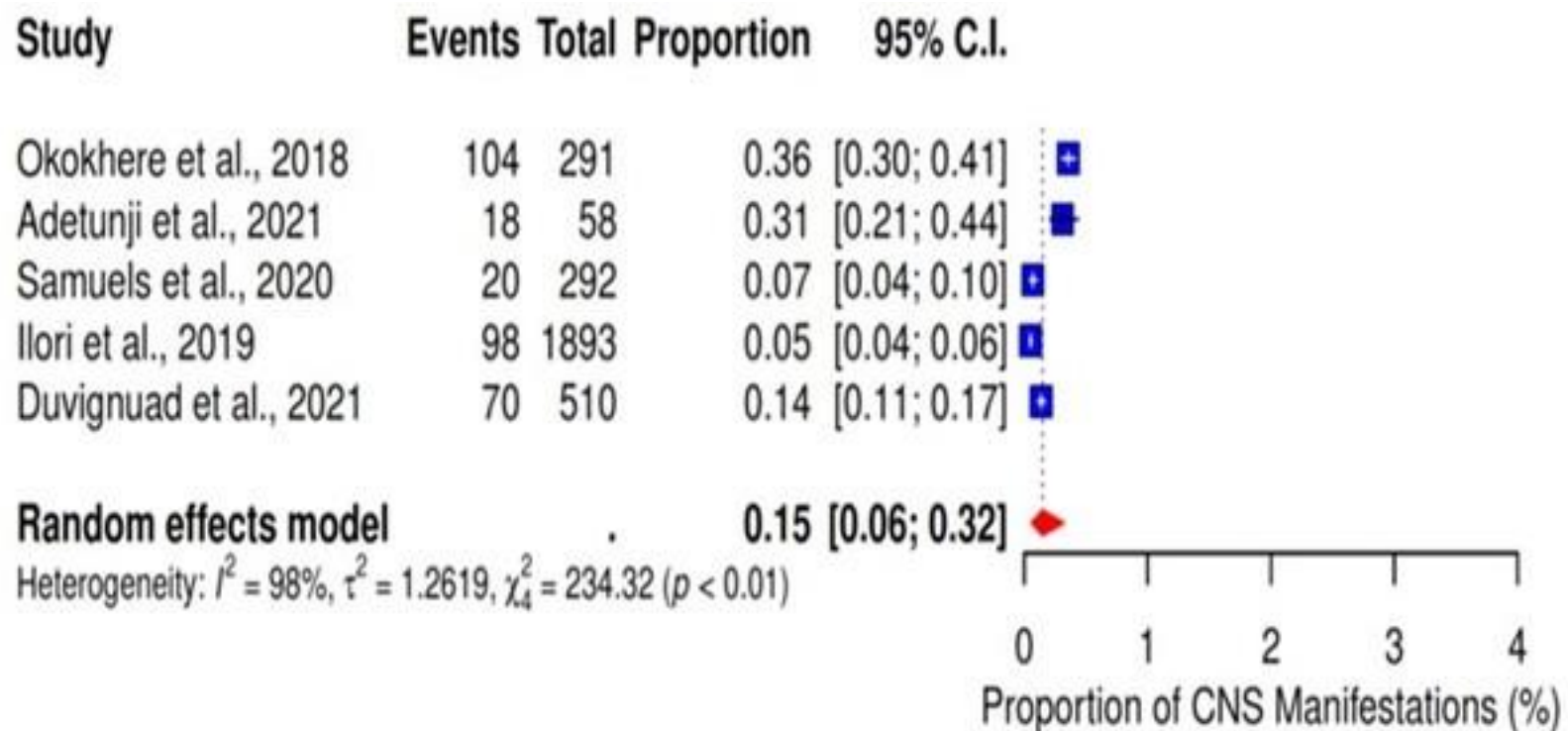
Figure



Figure

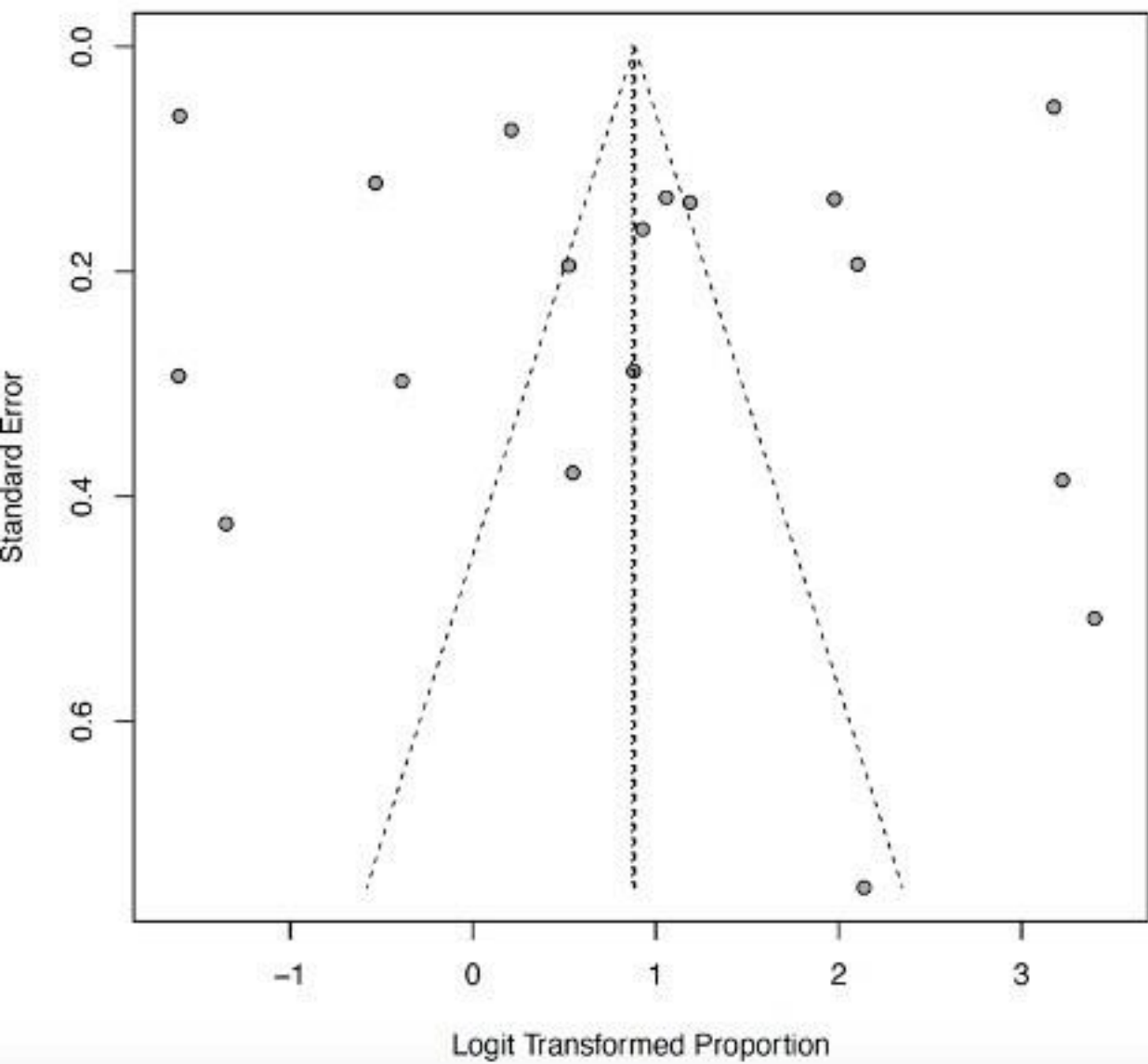


Figure

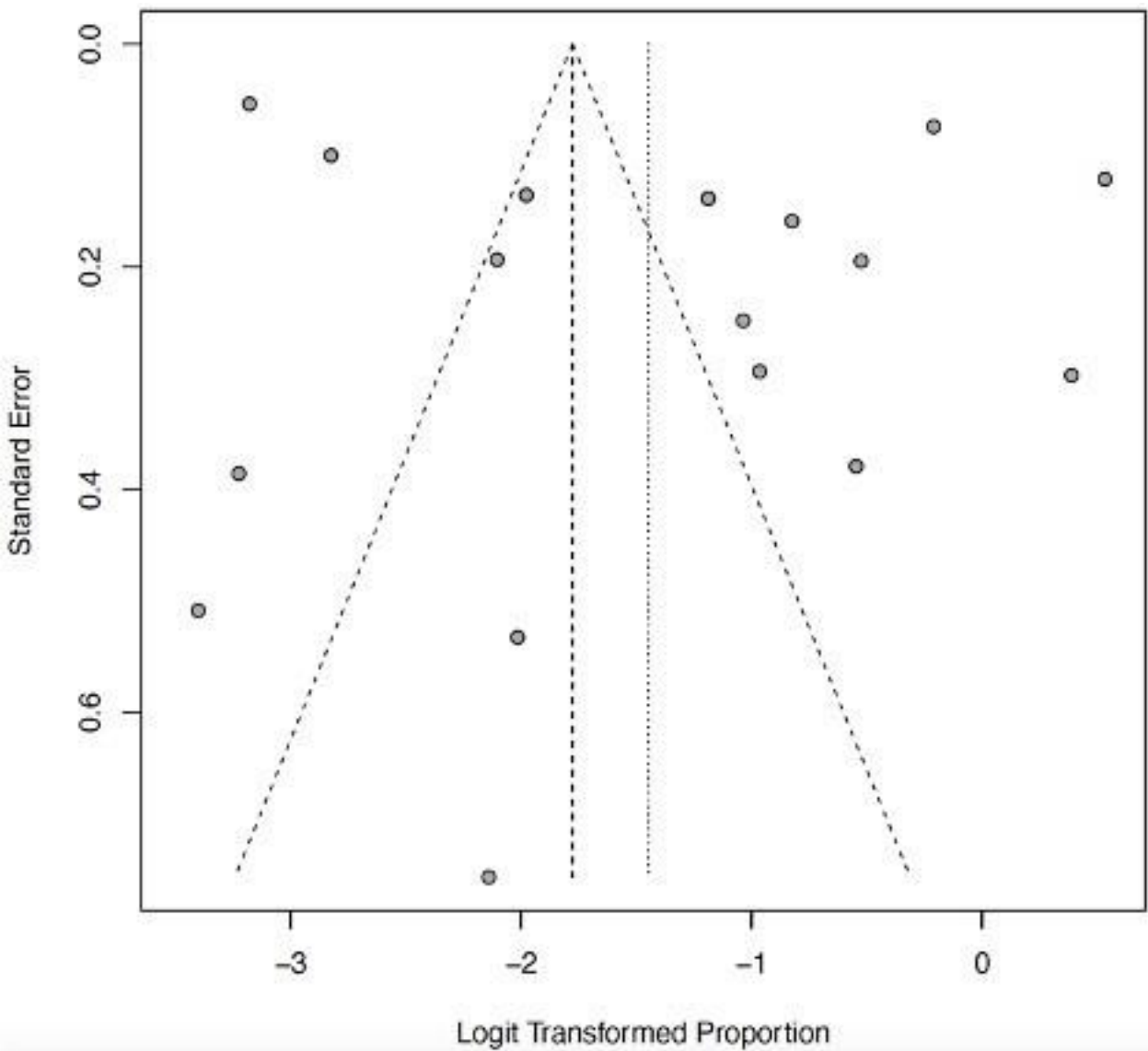


Figure

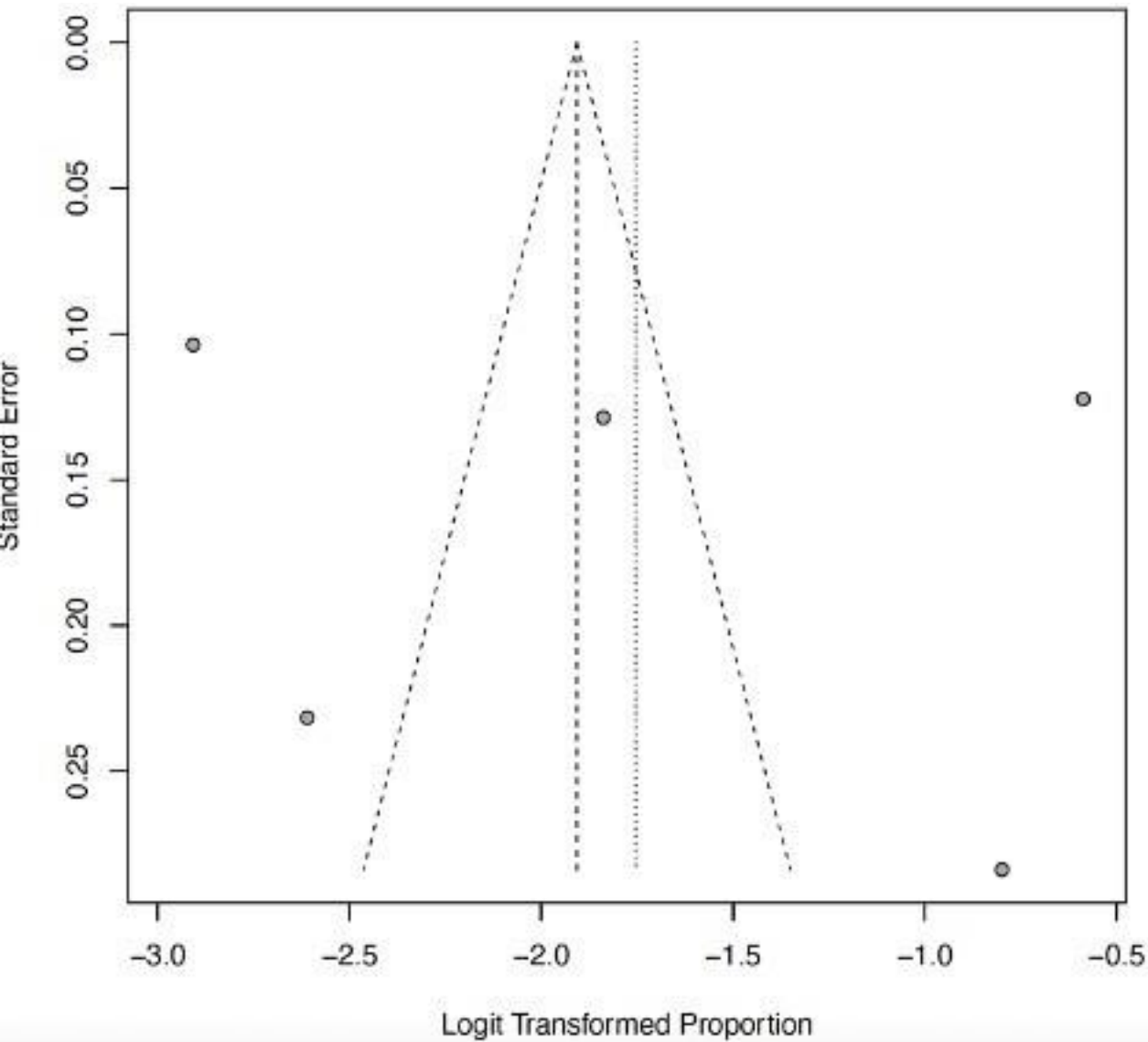




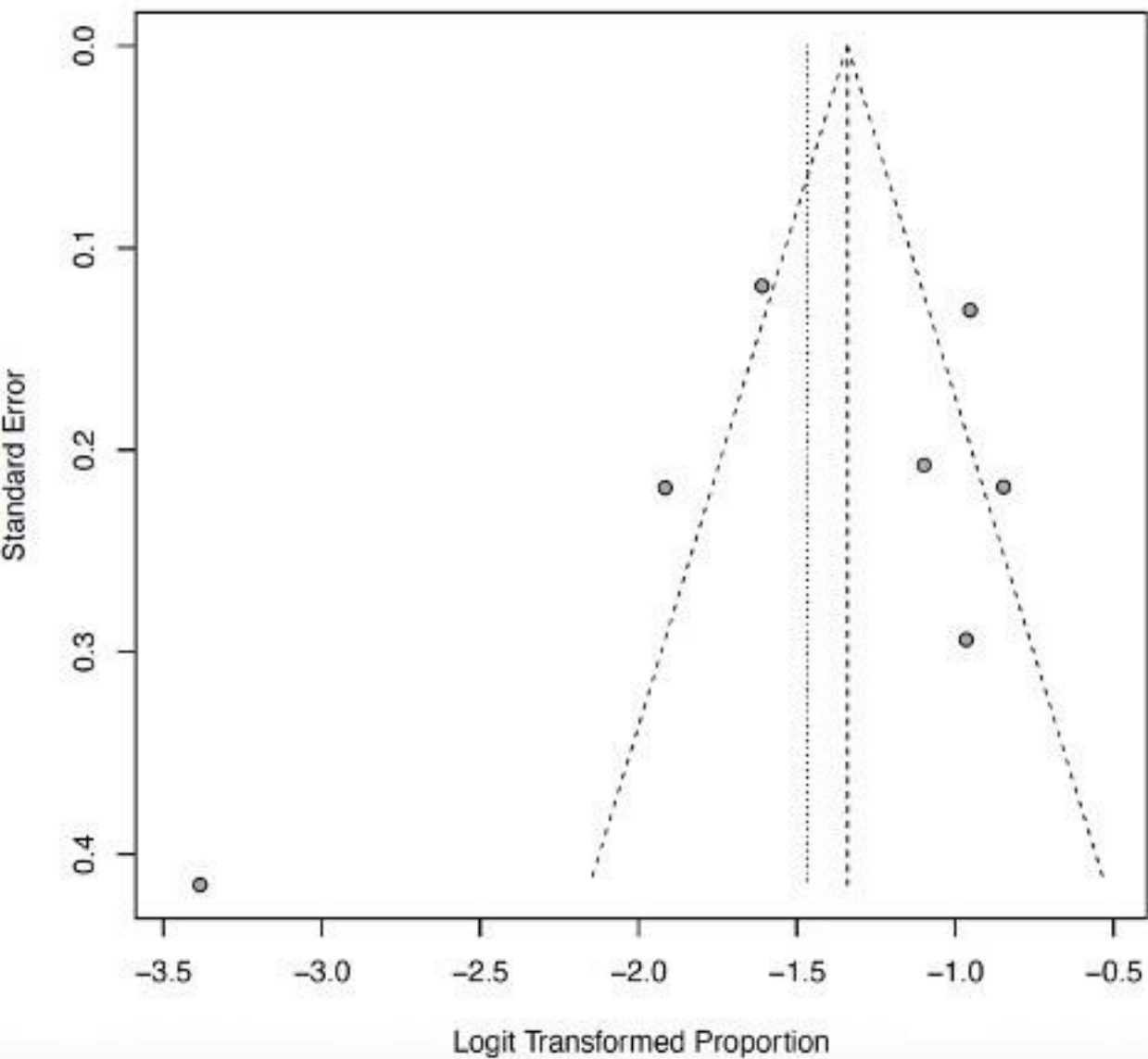
Figure



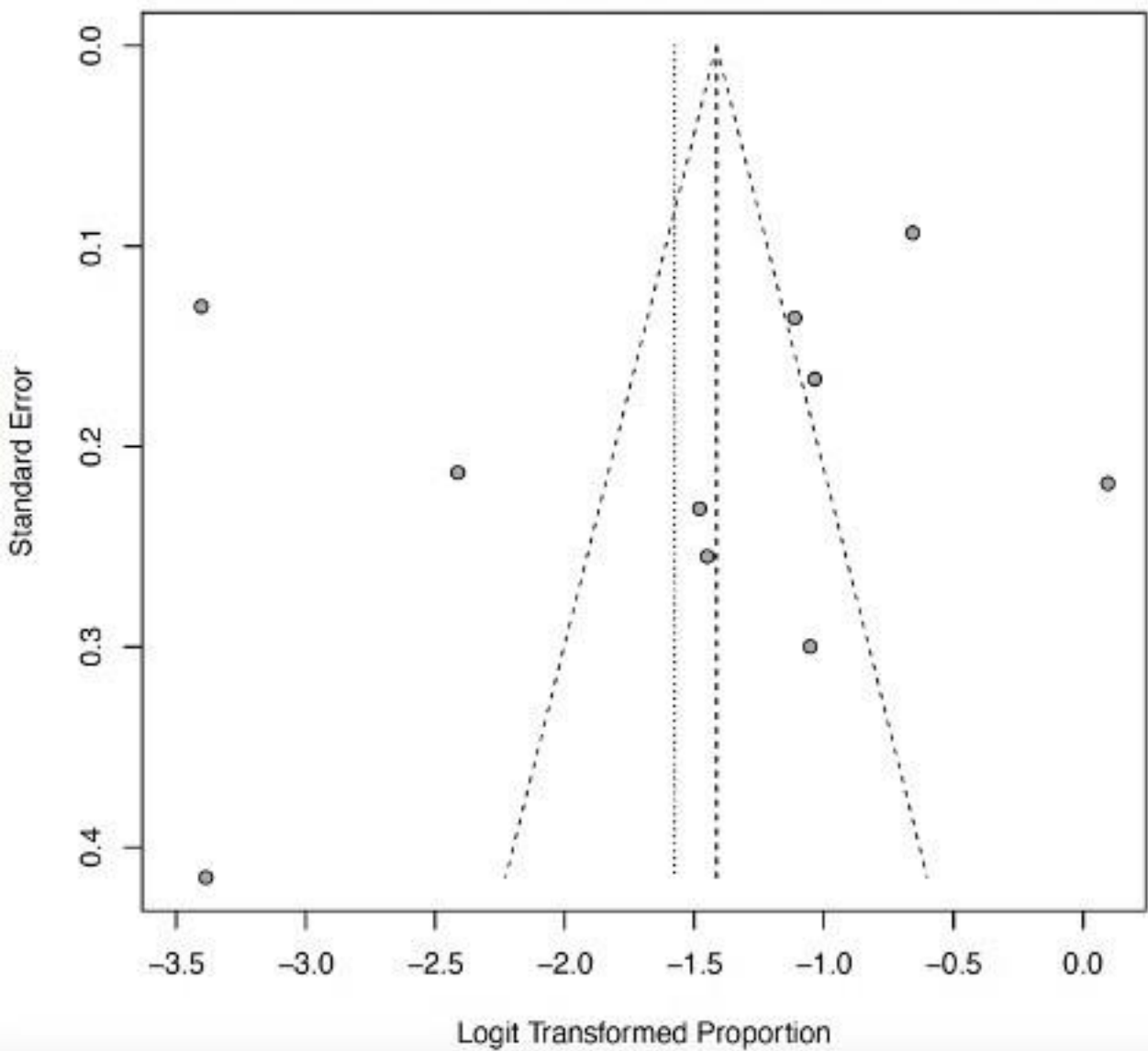
Figure



Figure



Figure



Figure