

BRIEF COMMUNICATION

Early effectiveness of the BNT162b2 KP.2 vaccine against COVID-19 in the US Veterans Affairs Healthcare System

Haley J. Appaneal^{1,2,3}

Vrishali V. Lopes¹

Laura Puzniak⁴

Evan J. Zasowski⁴

Luis Jodar⁴

John M. McLaughlin⁴

Aisling R. Caffrey^{1,2,3,5}

Affiliations:

1. Infectious Diseases Research Program, Providence Veterans Affairs Healthcare System, Providence, RI, United States
2. Center of Innovation in Long-Term Support Services, Providence Veterans Affairs Healthcare System, Providence, RI, United States
3. College of Pharmacy, University of Rhode Island, Kingston, RI, United States
4. Pfizer Inc. New York, New York
5. School of Public Health, Brown University, Providence, RI, United States

Address Correspondence: Aisling R Caffrey, PhD, MS, University of Rhode Island, College of Pharmacy, 7 Greenhouse Rd, 265B, Kingston, RI 02881, 401-874-5320 (office); Aisling_Caffrey@uri.edu

ABSTRACT (71 words)

We conducted a test-negative case-control study within the US Veterans Affairs Healthcare System to estimate early vaccine effectiveness (VE) of the BNT162b2 KP.2 vaccine (Pfizer 2024-2025 formulation) against COVID-19 outcomes. Among 44,598 acute respiratory infections between September 5 and November 30, 2024, VE was 68% (42-82%), 57% (46-65%), and 56% (36-69%) against COVID-19-associated hospitalizations, emergency department and urgent care visits, and outpatient visits, respectively. Uptake of updated COVID-19 vaccines remains low.

Word count (1,626 words)

BACKGROUND

On August 22, 2024, the US Food and Drug Administration (FDA) authorized and approved the use of the Omicron KP.2-adapted COVID-19 vaccine formulation for the 2024-2025 respiratory virus season. The US Centers for Disease Control and Prevention (CDC) recommends everyone ages 6 months and older receive an updated COVID-19 vaccine, regardless of previous COVID-19 vaccination history. Over the past several years, COVID-19 vaccines have been key in blunting the public health impact of SARS-CoV-2.¹⁻⁴ However, COVID-19 vaccination rates have fallen over the past several years.⁵ Data demonstrating real-world effectiveness of KP.2-adapted COVID-19 vaccines during the early part of the 2024-2025 respiratory virus season may help improve vaccine acceptance for the remainder of this season's COVID-19 vaccine campaign, as well as future campaigns. We evaluated early vaccine effectiveness (VE) of the BNT162b2 KP.2 vaccine (Pfizer 2024-2025 formulation) against COVID-19 hospitalizations, emergency department (ED) and urgent care (UC) visits, and outpatient visits.

METHODS

Ethics Approval

Our study complies with all relevant ethical regulations and was determined to be exempt by the VA Providence Healthcare System (VAPHS) Institutional Review Board (IRB) and approved by the VAPHS Research and Development Committee. As this was a retrospective study of existing health records and exempt from IRB review, informed consent requirements are not applicable.

Setting and Participants

We conducted a nationwide test-negative case-control study using clinical data from patients of the US Veterans Affairs (VA) Healthcare System, the largest integrated healthcare system in the US. We assessed VE of BNT162b2 KP.2 vaccine among adult patients (≥ 18 years of age) diagnosed with an acute respiratory infection (ARI, **Supplemental Table 1**) in the hospital, ED/UC, or outpatient setting (in-person or virtual)

between September 5, 2024 and November 30, 2024. As in our prior work,⁶ to be included patients had to be tested for SARS-CoV-2 via nucleic acid amplification test (NAAT) or rapid antigen test (RAT) within 14 days prior through 3 days after the ARI encounter and patients were excluded if they (1) did not have at least one visit to the VA Healthcare System in the previous 12 months, (2) had another prior positive SARS-CoV-2 test in the 90 days prior to their ARI episode, (3) received a KP.2 vaccine other than BNT162b2, (4) received BNT162b2 KP.2 vaccine within 8 weeks of a prior COVID-19 vaccine dose, (5) received BNT162b2 KP.2 vaccine within 14 days prior to their ARI episode, (6) received BNT162b2 KP.2 vaccine but the date of administration was unknown, or (7) received a COVID-19 antiviral (nirmatrelvir/ritonavir, remdesivir, or molnupiravir) within 30 days prior to their ARI episode. Patients could contribute more than one ARI episode to the study if the episodes were more than 30 days apart (**Supplemental Figure 1**).

Outcomes

Within each ARI outcome category (hospitalizations, ED/UC visits, outpatient visits), cases were those with a positive SARS-CoV-2 test result, and controls were those who tested negative.

Exposure

Exposed patients received the BNT162b2 KP.2 vaccine at least 14 days before the ARI encounter. Unexposed patients did not receive a KP.2 strain-adapted COVID-19 vaccine of any kind, regardless of prior COVID-19 vaccination history. Vaccine exposure status was determined from the VA's integrated electronic health record, which captures vaccines administered both within and outside of the VA Healthcare System.⁷ COVID-19 vaccines were offered free of charge to all Veterans enrolled in the VA Healthcare System based on CDC recommendations at the time of study conduct.⁸

Statistical Analyses

Separate multivariable logistic regression models were used to compare the odds of receiving BNT162b2 KP.2 vaccine among SARS-CoV-2 positive cases and test-negative controls within each ARI outcome category, while adjusting for potentially confounding variables. We selected the following variables to control

for a priori based on previous literature and previous work: age (18–64, 65–74, or ≥ 75 years), sex (male or female), race (Black, White, or other race), ethnicity (Hispanic or non-Hispanic), body mass index (underweight, healthy weight, overweight, obese, or missing), Charlson Comorbidity Index (0, 1, 2, 3, or ≥ 4), smoking status (current/former smoker or never smoker/unknown), immunocompromised status (yes or no), receipt of pneumococcal vaccine in the past 5 years (yes or no), number of interactions with the VA healthcare system in the year prior (hospital admission, nursing home admission, ED/UC visit, primary care visit; 0 or ≥ 1 for each), evidence of documented prior SARS-CoV-2 infection (yes or no), and US Census region (Northeast, Midwest, South, or West). We checked for assumptions and model fit in all logistic regression models. To calculate VE, we subtracted the corresponding adjusted odds ratios (OR) and 95% confidence intervals (CI) from 1 and multiplied by 100%. Subgroup analyses were conducted in those ≥ 65 years of age. All analyses were conducted using SAS (Version 9.4 and Enterprise Guide 8.3, SAS Institute Inc., Cary, NC, USA).

DATA AVAILABILITY

The data supporting the findings of this study are not publicly available due to the inclusion of identifiable protected health information from the Veterans Health Administration. Privacy regulations prevent the open sharing of the individual-level data used in this study and any data covered under these regulations cannot be shared. The Veterans Health Administration may approve the sharing of some study data after verifying de-identification, though this may not include all final study data. Each request is subject to approval by the ethics board, privacy office, and information systems and security office. For such requests, please contact the corresponding author.

RESULTS

This study included 44,598 ARI encounters with valid SARS-CoV-2 test results (**Supplemental Figure 1**), of which 9,439 (21.2%) were hospital admissions, 23,966 (53.7%) were ED/UC visits, and 11,193 (25.1%) were outpatient visits. Median age was 68 years (58.6% were ≥ 65 years of age), 87.7% were male, and 73.9%

had at least one chronic medical condition. Overall, 16.2% (7,224) tested positive for SARS-CoV-2, and 1,666 (3.7%) received the BNT162b2 KP.2 vaccine, with a median time since receipt of 33 days (interquartile range 22-46). Overall, 138 of 7224 cases (1.9%) and 1,528 of 37,374 controls (4.1%) received the BNT162b2 KP.2 vaccine (Table 1).

Compared to those who tested positive for SARS-CoV-2, test-negative controls had a higher proportion of individuals with a Charlson Comorbidity Index ≥ 4 (34.7% vs 25.5%; $P < .001$), hospital admission in the prior year (36.5% vs 22.3%; $P < .001$), an ED visit in the prior year (71.8% vs 63.0%; $P < .001$), and prior documented SARS-CoV-2 infection (37.0% vs 33.7%; $P < .001$). These and other differences by case-control status are described in **Table 1** and **Supplemental Table 2**. Demographics and clinical characteristics by case-control status for each VE outcome are presented in **Supplemental Tables 3-5** and by BNT162b2 KP.2 vaccination status in **Supplemental Table 6**.

Overall, adjusted VE of the BNT162b2 KP.2 vaccine (compared to not receiving a KP.2 strain-adapted vaccine of any kind) against all COVID-19 outcomes was 56% (95% CI: 48–63%). Adjusted VE estimates by outcome were 68% (42–82%), 57% (46–65%), and 56% (36–69%) against hospitalizations, ED/UC visits, and outpatient visits, respectively (**Figure 1**). Among those ≥ 65 years of age, adjusted VE estimates by outcome were 75% (49–88%), 56% (44–66%), and 58% (36–73%) against hospitalizations, ED/UC visits, and outpatient visits, respectively (**Supplemental Table 7**).

DISCUSSION

Our study is among the first to present early COVID-19 VE data for the 2024-2025 viral respiratory season. Results suggest that the BNT162b2 KP.2 vaccine provided significant protection against both mild and severe COVID-19 outcomes during the early part of the season. VE against milder outpatient disease (ED/UC or outpatient visits) was 56–57% and against hospitalization was 68%. VE was similar when analyses were restricted to those ≥ 65 years of age, suggesting the vaccine provided comparable protection

against the range of COVID-19 outcomes we studied in older adults who remain at increased risk of severe COVID-19. These current estimates are similar to our estimates of BNT162b2 XBB VE last year against the same outcomes and in the same population during a similar time period (September 25 to November 30, 2023).⁶ These findings suggest that early protection of annual COVID-19 vaccination over the last two years has been similar (VE of roughly 50–70%, with the highest levels of protection seen against more severe outcomes like hospitalization).

According to CDC, however, uptake of KP.2 vaccines during the 2024-2025 respiratory virus season remains relatively low. As of December 12, 2024, only 21% of all adults ≥ 18 years of age, and 45% of adults ≥ 65 years reported receiving an updated KP.2 vaccine.⁹ These percentages are notably lower than influenza vaccination rates during a similar time period, with 41% and 67% of adults ≥ 18 and ≥ 65 years of age receiving the flu vaccine. Public health efforts should focus on improving acceptance and uptake of COVID-19 vaccines, as a recent report suggested that nearly 70% of US adults currently express hesitation or unwillingness toward receiving an updated COVID-19 vaccine.⁹

Similar to our previous work, this study has several limitations.¹⁰ In brief, the test-negative case-control study is considered a reliable design for evaluating real-world VE, but it is still susceptible to selection bias.¹¹⁻¹³ Although we adjusted for key patient clinical and sociodemographic characteristics, there still may be residual confounding by unknown or unmeasured factors. We presented early VE estimates with a median time since KP.2 vaccination of only 33 days, thus future studies to evaluate longer-term durability are needed. Additionally, some ARI episodes may have involved seeking care "with COVID-19" rather than "for COVID-19," potentially leading to an underestimation of VE. Further, we were unable to conduct stratified analyses by specific vaccination history due to extensive heterogeneity in the number and type of previous COVID-19 vaccinations received. Previous studies, however, have suggested that older versions of COVID-19 vaccines likely offer little additional protection during subsequent seasons.¹⁴ Finally, our results may not be broadly generalizable, as they were conducted among the VA population which is generally older,

predominantly male, and with a higher prevalence of multiple comorbid conditions compared to the general US or other global populations.^{6,15}

In summary, the BNT162b2 KP.2 vaccine was 56–68% effective at preventing a range of COVID-19 outcomes during the early part of the 2024-2025 respiratory virus season. Maintaining protection against COVID-19 with vaccination continues to be critical given that the post-pandemic burden of COVID-19 remains substantial. For example, cumulative rates of COVID-19-related hospitalization from September 2023 through October 2024 were estimated to be 242 and 821 per 100,000 among US adults ≥ 18 and ≥ 65 years of age,¹⁶ respectively, which were higher than hospitalization rates for influenza and respiratory syncytial virus during the same period.¹⁷ Despite this persistent burden and the increased protection observed with receiving updated vaccines over the last two respiratory virus seasons, uptake of updated COVID-19 vaccines remains low, even among older adults. Additional efforts to improve COVID-19 vaccine uptake to match that of annual influenza vaccine coverage are needed.

References

1. Polack FP, Thomas SJ, Kitchin N, et al. Safety and Efficacy of the BNT162b2 mRNA Covid-19 Vaccine. *N Engl J Med*. Dec 31 2020;383(27):2603-2615. doi:10.1056/NEJMoa2034577
2. Sadoff J, Gray G, Vandebosch A, et al. Safety and Efficacy of Single-Dose Ad26.COV2.S Vaccine against Covid-19. *N Engl J Med*. Jun 10 2021;384(23):2187-2201. doi:10.1056/NEJMoa2101544
3. Marra AR, Kobayashi T, Callado GY, et al. The effectiveness of COVID-19 vaccine in the prevention of post-COVID conditions: a systematic literature review and meta-analysis of the latest research. *Antimicrob Steward Healthc Epidemiol*. 2023;3(1):e168. doi:10.1017/ash.2023.447
4. Watson OJ, Barnsley G, Toor J, Hogan AB, Winskill P, Ghani AC. Global impact of the first year of COVID-19 vaccination: a mathematical modelling study. *Lancet Infect Dis*. Sep 2022;22(9):1293-1302. doi:10.1016/s1473-3099(22)00320-6
5. Mathieu E, Ritchie H, Rodés-Guirao L, et al. Coronavirus (COVID-19) Vaccinations. Accessed 17 December, 2024. <https://ourworldindata.org/covid-vaccinations>
6. Caffrey AR, Appaneal HJ, Lopes VV, et al. Effectiveness of BNT162b2 XBB vaccine in the US Veterans Affairs Healthcare System. *Nat Commun*. Nov 02 2024;15(1):9490. doi:10.1038/s41467-024-53842-w
7. U.S. Department of Veterans Affairs. Department of Veterans Affairs COVID-19 National Summary. Accessed January 31, 2024. <https://www.accesstocare.va.gov/Healthcare/COVID19NationalSummary>
8. U.S. Department of Veterans Affairs. COVID-19 vaccines at VA. Accessed January 31, 2024. <https://www.va.gov/health-care/covid-19-vaccine/>
9. CDC. Vaccination Trends. Accessed December 13, 2024. https://www.cdc.gov/respiratory-viruses/data/vaccination-trends.html#cdc_data_surveillance_section_3-covid-19-vaccine
10. Caffrey AA, HJ. Lopes, VV. Puzniak, L. Zasowski, EJ. Jodar, L. LaPlante, KL. McLaughlin, JM. **Effectiveness of BNT162b2 XBB vaccine in the US Veterans Affairs Healthcare System.** *Nature Communications*. 2024 Nov 2;15(1):9490.
11. Foppa IM, Haber M, Ferdinands JM, Shay DK. The case test-negative design for studies of the effectiveness of influenza vaccine. *Vaccine*. Jun 26 2013;31(30):3104-9. doi:10.1016/j.vaccine.2013.04.026
12. De Serres G, Skowronski DM, Wu XW, Ambrose CS. The test-negative design: validity, accuracy and precision of vaccine efficacy estimates compared to the gold standard of randomised placebo-controlled clinical trials. *Euro Surveill*. Sep 12 2013;18(37)doi:10.2807/1560-7917.es2013.18.37.20585
13. Jackson ML, Phillips CH, Benoit J, et al. The impact of selection bias on vaccine effectiveness estimates from test-negative studies. *Vaccine*. Jan 29 2018;36(5):751-757. doi:10.1016/j.vaccine.2017.12.022
14. Tartof SY, Slezak JM, Frankland TB, et al. Estimated Effectiveness of the BNT162b2 XBB Vaccine Against COVID-19. *JAMA Intern Med*. Aug 01 2024;184(8):932-940. doi:10.1001/jamainternmed.2024.1640
15. Weinberger DM, Rose L, Rentsch C, et al. Excess Mortality Among Patients in the Veterans Affairs Health System Compared With the Overall US Population During the First Year of the COVID-19 Pandemic. *JAMA Netw Open*. May 01 2023;6(5):e2312140. doi:10.1001/jamanetworkopen.2023.12140
16. CDC. COVID Data Tracker. COVID-NET Laboratory-confirmed COVID-19 hospitalizations. Accessed December 18 2024. <https://covid.cdc.gov/covid-data-tracker/#covidnet-hospitalization-network>
17. CDC. Respiratory Virus Hospitalization Surveillance Network (RESP-NET) | RESP-NET | CDC. RESP-NET interactive dashboard. Accessed December 18, 2024. <https://www.cdc.gov/resp-net/dashboard/index.html>
18. Kitchen C, Hatef E, Chang HY, Weiner JP, Kharrazi H. Assessing the association between area deprivation index on COVID-19 prevalence: a contrast between rural and urban U.S. jurisdictions. *AIMS Public Health*. 2021;8(3):519-530. doi:10.3934/publichealth.2021042
19. Cheng D, DuMontier C, Yildirim C, et al. Updating and Validating the U.S. Veterans Affairs Frailty Index: Transitioning From ICD-9 to ICD-10. *J Gerontol A Biol Sci Med Sci*. Jun 14 2021;76(7):1318-1325. doi:10.1093/gerona/glab071

20. Tartof SY, Slezak JM, Puzniak L, et al. Effectiveness of a third dose of BNT162b2 mRNA COVID-19 vaccine in a large US health system: A retrospective cohort study. *Lancet Reg Health Am.* May 2022;9:100198. doi:10.1016/j.lana.2022.100198

ACKNOWLEDGEMENTS

a. Funding

This study was conducted as a collaboration between the University of Rhode Island (URI), VA Providence Healthcare System, and Pfizer. Pfizer is the study sponsor. URI and VA Providence Healthcare System received funding from Pfizer in connection with the development of this manuscript and for data analysis.

b. Other Acknowledgements

The views expressed are those of the authors and do not necessarily reflect the position or policy of the United States Department of Veterans Affairs.

The research study would not have been possible without the health information from patients under the care of the Veterans Health Administration. We express our gratitude to the VA patients for their invaluable contributions to medical and scientific progress.

Author Contributions Statement

Conception and design of the study: Haley J. Appaneal, Vrishali V. Lopes, Laura Puzniak, Evan J. Zasowski, John M. McLaughlin, Aisling R. Caffrey

Data generation: Haley J. Appaneal, Vrishali V. Lopes, Aisling R. Caffrey

Analysis and/or interpretation of the data: Haley J. Appaneal, Vrishali V. Lopes, Laura Puzniak, Evan J. Zasowski, Luis Jodar, John M. McLaughlin, Aisling R. Caffrey

Preparation or critical revision of the manuscript: Haley J. Appaneal, Vrishali V. Lopes, Laura Puzniak, Evan J. Zasowski, Luis Jodar, John M. McLaughlin, Aisling R. Caffrey

Competing Interests Statement

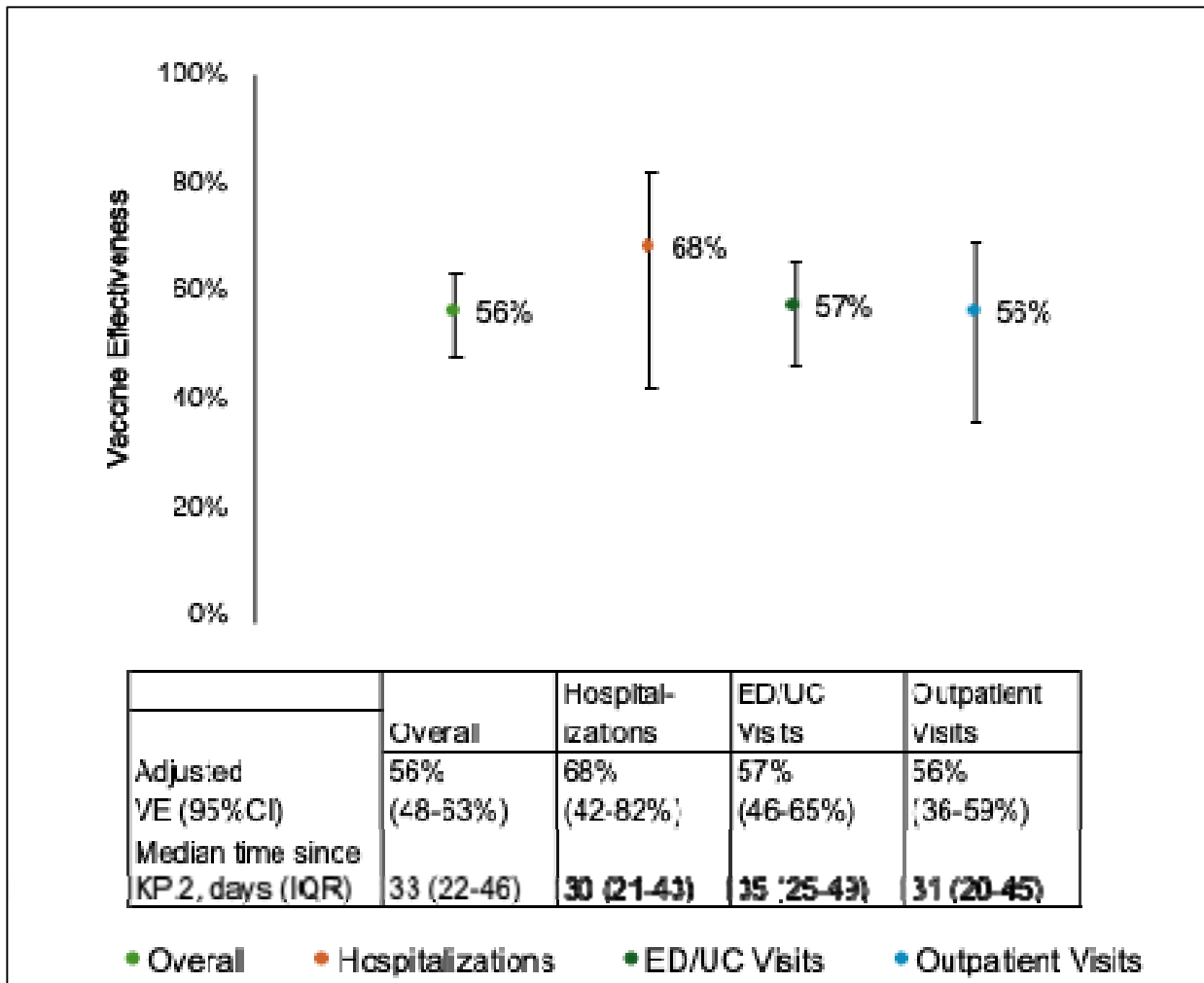
Haley J. Appaneal has received research funding from Pfizer.

Vrishali V. Lopes has no competing interest to declare.

Laura Puzniak, Evan J. Zasowski, Luis Jodar, and John M. McLaughlin are employees and shareholders of Pfizer Inc.

Aisling R. Caffrey has received research funding from AbbVie, Merck, and Pfizer.

Figure 1. Adjusted effectiveness of the BNT162b2 KP.2 vaccine by COVID-19 outcomes



ED/UC = emergency department/urgent care; IQR = interquartile range; KP.2 = BNT162b2 KP.2 adapted vaccine; VE= vaccine effectiveness

Compared the odds of receiving the 2024/2025 BNT162b2 KP.2 strain-adapted COVID-19 vaccine between SARS-CoV-2 positive cases and SARS-CoV-2 negative controls. Adjusted for age (18–64, 65–74, ≥75 years), sex (male or female), race (Black, White, or other race), ethnicity (Hispanic or non-Hispanic), body mass index (BMI) categories (underweight, healthy weight, overweight, obese, missing), Charlson Comorbidity Index (0, 1, 2, 3, ≥4), receipt of pneumococcal vaccine in the past 5 years (yes or no), hospital admission, nursing home admission, ED/UC visit, primary care visit; 0 or ≥1 for each), prior documented SARS-CoV-2 infection (yes or no), smoking status (current/former smoker or never smoker/unknown), immunocompromised (yes or no), and Census region (Northeast, Midwest, South, or West).

Table 1. Demographics and clinical characteristics of acute respiratory infection encounters by case-control status

	Total (n=44,598)	SARS-CoV-2 positive (n=7,224)	SARS-CoV-2 negative (n=37,374)	P-value
COVID vaccine status*				
≥1 dose of BNT162b2 KP.2 adapted vaccine	1,666 (3.7)	138 (1.9)	1,528 (4.1)	<0.001
≥1 dose of XBB vaccine	11,786 (26.4)	1,953 (27.0)	9,833 (26.3)	0.201
≥1 dose of BA.4/5-adapted bivalent vaccine	13,730 (30.8)	2,408 (33.3)	11,322 (30.3)	<0.001
≥3 doses of original wild-type mRNA vaccine but no variant-adapted vaccines	11,916 (26.7)	2,028 (28.1)	9,888 (26.5)	0.004
≥2 doses of original wild-type mRNA vaccine but no variant-adapted vaccines	19,819 (44.4)	3,249 (45)	16,570 (44.3)	0.317
Unvaccinated	8,162 (18.3)	1,119 (15.5)	7,043 (18.8)	<0.001
Time since last non- KP.2 adapted vaccine, median days (IQR)	815 (354-1088)	797 (348-1072)	818 (356-1091)	0.026
Age group				
18–64 years	18,447 (41.4)	2,951 (40.8)	15,496 (41.5)	<0.001
65–74 years	11,583 (26)	1,765 (24.4)	9,818 (26.3)	
≥75 years	14,568 (32.7)	2,508 (34.7)	12,060 (32.3)	
Sex	39,127 (87.7)	6,315 (87.4)	32,812 (87.8)	0.372

	Total (n=44,598)	SARS-CoV-2 positive (n=7,224)	SARS-CoV-2 negative (n=37,374)	P-value
Male				
Female	5,471 (12.3)	909 (12.6)	4,562 (12.2)	
Body mass index category	657 (1.5)	58 (0.8)	599 (1.6)	<0.001
Underweight (<18.5 kg/m ²)				
Healthy weight (18.5–24.9 kg/m ²)	14,107 (31.6)	2,145 (29.7)	11,962 (32)	
Overweight (25–29.9 kg/m ²)	8,883 (19.9)	1,597 (22.1)	7,286 (19.5)	
Obese (≥30 kg/m ²)	20,877 (46.8)	3,412 (47.2)	17,465 (46.7)	
Missing	74 (0.2)	12 (0.2)	62 (0.2)	
Region	9,005 (20.2)	1,550 (21.5)	7,455 (19.9)	<0.001
Midwest				
Northeast	6,208 (13.9)	1,114 (15.4)	5,094 (13.6)	
West	8,773 (19.7)	1,506 (20.8)	7,267 (19.4)	
South	20,612 (46.2)	3,054 (42.3)	17,558 (47)	
Race	11,760 (26.4)	1,752 (24.3)	10,008 (26.8)	<0.001
Black or African American				
White	28,269 (63.4)	4,715 (65.3)	23,554 (63)	
Other race	4,569 (10.2)	757 (10.5)	3,812 (10.2)	
Ethnicity	4,120 (9.2)	630 (8.7)	3,490 (9.3)	0.097
Hispanic or Latino				
Not Hispanic or Latino	40,478 (90.8)	6,594 (91.3)	33,884 (90.7)	
Smoking	26,594 (59.6)	4,069 (56.3)	22,525 (60.3)	<0.001
Current or former				

	Total (n=44,598)	SARS-CoV-2 positive (n=7,224)	SARS-CoV-2 negative (n=37,374)	P-value
Never	17,007 (38.1)	3,031 (42)	13,976 (37.4)	
Unknown	997 (2.2)	124 (1.7)	873 (2.3)	
Area deprivation index (ADI)** Quintile	8,671 (19.4)	1,355 (18.8)	7,316 (19.6)	0.002
1 (Least Deprived)				
2	8,666 (19.4)	1,468 (20.3)	7,198 (19.3)	
3	8,668 (19.4)	1,388 (19.2)	7,280 (19.5)	
4	8,683 (19.5)	1,462 (20.2)	7,221 (19.3)	
5 (Most Deprived)	8,668 (19.4)	1,391 (19.3)	7,277 (19.5)	
Unknown	1,242 (2.8)	160 (2.2)	1,082 (2.9)	
VA Frailty index (VA-FI)*** Non-frail (VA-FI \leq 0.1)	11,359 (25.5)	2,059 (28.5)	9,300 (24.9)	<0.001
Pre-frail (VA-FI >0.1-0.2)	10,353 (23.2)	1,957 (27.1)	8,396 (22.5)	
Mildly frail (VA-FI >0.2-0.3)	8,452 (19)	1,450 (20.1)	7,002 (18.7)	
Moderately frail (VA-FI >0.3-0.4)	6,305 (14.1)	884 (12.2)	5,421 (14.5)	
Severely frail (VA-FI \geq 0.5)	8,129 (18.2)	874 (12.1)	7,255 (19.4)	
Healthcare exposures, 1 year prior	15,243 (34.2)	1,612 (22.3)	13,631 (36.5)	<0.001
Hospital admission				
Nursing home admission	2,027 (4.5)	307 (4.2)	1,720 (4.6)	0.188
Intensive care unit admission	4,877 (10.9)	393 (5.4)	4,484 (12)	<0.001
Emergency department visit	31,389 (70.4)	4,554 (63)	26,835 (71.8)	<0.001
Primary care visit	42,629 (95.6)	6,930 (95.9)	35,699 (95.5)	0.119

	Total (n=44,598)	SARS-CoV-2 positive (n=7,224)	SARS-CoV-2 negative (n=37,374)	P-value
Charlson Comorbidity Index	11,627 (26.1)	2,179 (30.2)	9,448 (25.3)	<0.001
0				
1	8,026 (18)	1,461 (20.2)	6,565 (17.6)	
2	5,370 (12)	922 (12.8)	4,448 (11.9)	
3	4,778 (10.7)	823 (11.4)	3,955 (10.6)	
≥ 4	14,797 (33.2)	1,839 (25.5)	12,958 (34.7)	
Immunocompromised****	18,223 (40.9)	2,220 (30.7)	16,003 (42.8)	<0.001
Week of ARI	2,965 (6.6)	805 (11.1)	2,160 (5.8)	<0.001
Sep 05–Sep 07,2024				
Sep 08–Sep 14,2024	5,015 (11.2)	1,404 (19.4)	3,611 (9.7)	
Sep 15–Sep 21,2024	3,971 (8.9)	976 (13.5)	2,995 (8)	
Sep 22–Sep 28,2024	3,498 (7.8)	672 (9.3)	2,826 (7.6)	
Sep 29–Oct 05,2024	3,398 (7.6)	552 (7.6)	2,846 (7.6)	
Oct 06–Oct 12,2024	2,963 (6.6)	403 (5.6)	2,560 (6.8)	
Oct 13–Oct 19,2024	2,997 (6.7)	355 (4.9)	2,642 (7.1)	
Oct 20–Oct 26,2024	3,215 (7.2)	376 (5.2)	2,839 (7.6)	
Oct 27–Nov 02,2024	3,207 (7.2)	342 (4.7)	2,865 (7.7)	
Nov 03–Nov 09,2024	3,333 (7.5)	369 (5.1)	2,964 (7.9)	
Nov 10–Nov 16,2024	3,421 (7.7)	330 (4.6)	3,091 (8.3)	
Nov 17–Nov 23,2024	3,658 (8.2)	331 (4.6)	3,327 (8.9)	
Nov 24–Nov 30,2024	2,957 (6.6)	309 (4.3)	2,648 (7.1)	
Prior COVID-19 infection****	16,270 (36.5)	2,433 (33.7)	13,837 (37)	<0.001

	Total (n=44,598)	SARS-CoV-2 positive (n=7,224)	SARS-CoV-2 negative (n=37,374)	P-value
Virtual visit (outpatient only)*****	979 (8.7)	401 (23.9)	578 (6.1)	<0.001
ICU admission (hospitalized only)*****	2,132 (22.6)	133 (14.9)	1,999 (23.4)	<0.001
Current influenza vaccine	8,731 (19.6)	1,070 (14.8)	7,661 (20.5)	<0.001
Pneumococcal vaccine in last 5 years	17,174 (38.5)	2,719 (37.6)	14,455 (38.7)	0.097

ARI= acute respiratory infection; ED/UC= emergency department/urgent care; VA= Veterans Affairs

Data are n (%) unless otherwise specified.

All ARI encounters within a 30-day window were considered a single ARI episode. If multiple encounter types occurred during the 30-day window, the highest level of care was used (hospitalization > ED/UC > outpatient).

*The categories under “COVID vaccine status” were categorized as present or absent for each category

**Area deprivation index (ADI) is a measure of socioeconomic disadvantage and was grouped into quintiles from least to most deprived neighborhoods (based on zip code).¹⁸

***Frailty was defined using the ICD-10 updated Veterans Affairs Frailty Index (VA-FI) and categorized as non-frail (VA-FI ≤ 0.1), prefrail ($>0.1-0.2$), mildly frail ($>0.2-0.3$), moderately frail ($>0.3-0.4$), and severely frail (≥ 0.5).¹⁹

****Immunocompromised status was based on immunocompromising conditions in the year prior and immunosuppressive medications in the 90 days prior to the ARI episode based on a slightly modified algorithm that has been previously described.²⁰ Unlike the previously described algorithm, we used diagnosis codes to identify solid organ or hematopoietic stem cell transplantation and HIV/AIDs versus patient registries. Consistent with the previously described algorithm, we required one inpatient or two outpatient diagnosis code for an immunocompromising condition (leukemia, lymphoma, congenital immunodeficiencies, asplenia/hyposplenia, HIV/AIDS, and organ transplant) in the year prior and any immunosuppressive medication (alkylating agents, antibiotics, antimetabolites, antimitotics, monoclonal antibodies, other, immune-modulating agents, TNF Alpha antagonist, and steroids) with an outpatient days supply or inpatient administration in the 90 days prior.

****Prior COVID-19 infection was defined as any previous documented SARS-CoV-2 infection or no prior documented infection (yes or no).

****Virtual visit was only assessed among those with an outpatient visit and defined as a virtual visit or not .

****ICU admission was only assessed among those with a hospital admission and defined as admission to an ICU or not.