

The Efficacy and Safety of Sodium-Glucose Cotransporter Protein 2 Inhibitors (SGLT2Is) in Liver Cirrhosis: A Systematic Review and Meta-Analysis

Authors

Sudheer Dhoop¹, Mohammed Shehada¹, Bisher Sawaf¹, Manthan Patel¹, Luke Roberts², Wade-Lee Smith³, Benjamin Hart⁴

Institutional Affiliations

1. Department of Internal Medicine, University of Toledo College of Medicine and Life Sciences, Toledo, OH, USA
2. University of Toledo College of Medicine and Life Sciences, Toledo OH USA
3. University Libraries, University of Toledo, Toledo, OH, USA
4. Department of Gastroenterology, University of Toledo College of Medicine and Life Sciences, Toledo, OH, USA

Corresponding Author:

Sudheer Dhoop, MD

Department of Internal Medicine, University of Toledo College of Medicine and Life Sciences, Toledo, OH, USA

3000 Arlington Ave.

Toledo, Ohio, 43614, USA

E-mail: Sudheer.Dhoop@utoledo.edu

Conflict of Interest Statement

All authors have no conflict of interest to disclose.

Funding Sources

No funding was provided for the completion of this study.

Summary

Background

Sodium-Glucose Cotransporter Protein 2 Inhibitors (SGLT2Is) are known for their cardiovascular and renoprotective benefits and are efficacious in managing Metabolic-Associated Steatotic Liver Disease (MASLD). However, limited data exist on their use in advanced liver disease, particularly liver cirrhosis.

Aims

To synthesize existing evidence on the efficacy and safety of SGLT2Is in patients with liver cirrhosis and to provide clinical guidance.

Methods

A systematic review and meta-analysis were conducted following the PRISMA 2020 Statement. Searches in major health databases identified studies where SGLT2Is were used in patients with cirrhosis. The analysis focused on prospective trials in decompensated cirrhosis and retrospective studies in compensated cirrhosis. Primary outcomes included the need for large-volume paracentesis (LVP) and mortality. Secondary outcomes assessed weight loss, loop diuretic dose reduction, residual ascites, acute kidney injury (AKI), hyponatremia, hepatic encephalopathy (HE), and urinary tract infections (UTIs).

Results

Ten studies (8 peer-reviewed) from 2020-2024 were included: 2 randomized controlled trials, 4 single-arm prospective trials, and 4 retrospective studies. SGLT2I use was associated with reduced LVP (RR 0.45, CI 0.31-0.66, $p < 0.001$) and mortality (aHR 0.46, CI 0.38-0.55, $p < 0.001$). Benefits included a 39 mg reduction in loop diuretic dose, 7 kg weight loss, and no significant increase in residual ascites, AKI, hyponatremia, HE, or UTIs.

Conclusions

SGLT2Is show promise in managing diuretic-resistant ascites and reducing mortality in liver cirrhosis without causing significant adverse events. Larger, randomized controlled trials are needed to validate these findings.

Keywords

Liver Cirrhosis, SGLT2 Inhibitors, Diuretic-Resistant Ascites, Meta-Analysis, Mortality, Hepatic Decompensation

Introduction:

Sodium-glucose cotransporter protein 2 inhibitors (SGLT2Is) were initially introduced as therapeutic agents for type 2 diabetes mellitus, primarily by inhibiting sodium-glucose cotransporters in the proximal renal tubule, thereby increasing glucosuria and improving glycaemic control [1]. Over time, a growing body of evidence has highlighted their cardiovascular advantages [2] and reno-protective properties [3], benefits that may partly stem from their modest diuretic effect [1]. Although substantial literature supports the use of SGLT2Is in the early stages of metabolic dysfunction-associated steatotic liver disease (MASLD) [4–7], including their ability to reduce liver stiffness, lower hepatic enzyme levels, decrease visceral adiposity, improve insulin sensitivity, and potentially prevent the progression to cirrhosis, data on their role in advanced liver disease remain sparse [8].

Cirrhosis, a late-stage manifestation of chronic liver injury, is a clinical diagnosis defined by histopathological findings of bridging fibrosis [9] and is characterised clinically by impaired hepatic synthetic capacity, metabolic dysfunction, and development of portal hypertension [10]. Cirrhosis follows a clinical course that may be initially compensated, with few overt clinical signs [11], but can evolve into decompensated disease marked by complications such as large-volume ascites, variceal bleeding secondary to portal hypertension [12], hepatic encephalopathy [13], and hepatorenal syndrome (HRS) due to severe circulatory and metabolic derangements [14].

Within this context, there is growing interest in leveraging the multifaceted benefits of SGLT2Is in cirrhosis. These agents may slow progression of cirrhosis secondary to MASLD through their cardiovascular [2] and anti-fibrotic benefits [6,7], as well as possibly reducing portal hypertension through their diuretic action, as suggested by preclinical animal models [15].

Nonetheless, clinical caution is warranted. The glycosuric effect that facilitates SGLT2Is' therapeutic benefit in diabetes also predisposes patients to genitourinary infections, which can be more severe in patients with cirrhosis due to compromised immune function [16]. In addition, as with loop diuretics [17], the haemodynamic instability inherent to cirrhotic patients—who often have baseline hypotension [10] and renin-angiotensin-aldosterone system (RAAS) dysregulation—can amplify the risk of acute kidney injury (AKI) and/or HRS [14], affect electrolyte homeostasis [8], potentially worsen hepatic encephalopathy [18], and possibly contribute to sarcopenia [19], which negatively influences long-term outcomes in cirrhosis [20]. Many retrospective database studies [21–24] have demonstrated that SGLT2I use may be associated with reduced mortality and hepatic decompensation events in patients with cirrhosis, with data suggesting benefit not only in compensated disease [20–23] but also in decompensated states [24]. Likewise, case reports [25,26] and case series [27], as reviewed by several systematic and narrative syntheses [4,28–30], have outlined scenarios in which SGLT2Is, despite their potential adverse effects, may serve as valuable adjunctive treatments for managing refractory ascites when combined with conventional diuretics such as loop diuretics and mineralocorticoid receptor antagonists [17,31]. In recent years, a series of experimental trials and additional case series have broadened this evidence base, focusing on the role of SGLT2Is in cirrhosis-related fluid management [32–38].

Still, formal guidelines currently advise against routine SGLT2I use in cirrhotic populations due to insufficient evidence and safety concerns [30]. Therefore, we aim to provide a comprehensive systematic review and meta-analysis of studies examining both the short- and long-term efficacy and safety of SGLT2Is in cirrhotic patients. Our objectives include evaluating their utility as diuretic adjuncts, delineating their adverse event profile, and assessing their potential to confer

meaningful long-term benefits. Synthesis of results will include meta-analysis, but also critical appraisal of each outcome, accounting for the limitations and differences of each study, culminating in a comprehensive review of SGLT2I use in liver cirrhosis to assist clinicians faced with complex decision-making in this high-risk population.

Methods

Search Strategy:

A comprehensive search strategy to identify studies involving patients with cirrhosis exposed to SGLT2Is was developed in Embase (Embase.com, Elsevier) by an experienced health sciences librarian (WL-S) using truncated keywords, phrases, and subject headings (see Supplementary Table 1). This strategy was translated to MEDLINE (PubMed platform, National Center for Biotechnology Information, National Library of Medicine), Cochrane Central Register of Controlled Trials (CochraneLibrary.com, Wiley), Web of Science Core Collection, Korean Citation Index (Web of Science platform, Clarivate), and Global Index Medicus (World Health Organization). The initial search was conducted on 28 October 2024 (Supplementary Table 2). No publication date or language limits were applied. All results were exported to EndNote 21 citation management software (Clarivate, Philadelphia, PA, USA).

Study Screening:

To screen studies, duplicates were removed through successive iterations of EndNote's duplicate detection algorithms and manual inspection. Two authors (S.D. and B.S.) reviewed the records and excluded duplicates not removed by the software, studies involving animals or children, review articles, case series, and study protocols. Experimental and observational studies published in all languages and countries were included. Studies were excluded if SGLT2Is were not the intervention or if the entire study population did not have cirrhosis. Discrepancies in

study inclusion or exclusion were resolved by an independent reviewer (M.P.). The study selection process followed the flow diagram recommended by the PRISMA 2020 statement [39] (see Figure 1).

Extraction of Raw Data and Outcome Selection:

All studies that met the inclusion criteria were reviewed. The following data were extracted and summarised in Table 1: study design, data source, controlled or propensity-matched variables, sample size, percentage of SGLT2I distribution, percentage with decompensated cirrhosis, percentage with non-alcoholic steatohepatitis (NASH) cirrhosis, study period, and efficacy and safety outcomes. Data extraction was performed by S.D., cross-checked by B.S., and recorded in a Microsoft Excel spreadsheet. Table 2 summarises the reported outcomes.

For prospective trials, the incidence of requiring large-volume paracentesis (LVP) was extracted as the primary dichotomous outcome, as diuretics are used to prevent the need for further ascites intervention [10]. Secondary dichotomous outcomes included the incidence of residual ascites, acute kidney injury (AKI), hyponatraemia, hepatic encephalopathy (HE), and urinary tract infections (UTIs). Continuous outcomes, such as weight reduction (in kilograms) and loop diuretic dose reduction (in milligrams), were also recorded. For randomised controlled trials, data were extracted from the experimental group for single-arm meta-analysis [40]. All outcomes were measured at study endpoints.

For retrospective studies, adjusted hazard ratios (aHR) with confidence intervals (CIs) for mortality were extracted as the primary outcome. Secondary outcomes included aHRs for hepatic decompensations (defined as a composite of variceal bleeding, HE, and ascites), ascites alone, and varices alone.

Data Standardization:

Before meta-analysis, weight and diuretic dose reduction data were standardised. For weight reduction, all data were converted to the mean, confidence interval, and sample size. One single-arm study [34] reported weight loss in litres removed with a *p*-value. Kilograms were approximated using a 1:1 ratio based on ascitic fluid having a density similar to water [41]. Confidence intervals were derived using inverse probability transformation of the *p*-value [42]. Another single-arm study expressed weight reduction as baseline and post-intervention means \pm standard error. The standard error of the difference formula for two independent means [42] was used to calculate the mean and confidence intervals (Table 2).

For diuretic dose, two studies were pooled: one used furosemide [32] and the other torsemide [33]. A conversion factor of 2.5:1 was applied [44]. For retrospective studies, aHRs for varices and ascites were pooled using inverse variance weighting [42] to calculate an overall aHR for hepatic decompensation.

Meta-Analysis:

Statistical analysis was conducted using Comprehensive Meta-Analysis (CMA) Version 4.0. Prospective and retrospective trials were pooled separately due to their distinct outcomes. For prospective studies, dichotomous outcomes (residual ascites, need for LVP, AKI, HE, and UTI) were pooled to generate risk ratios (RR) with confidence intervals using a random-effects model. Continuous outcomes (loop diuretic dose and weight reduction) were also pooled using a random-effects model to generate mean differences.

For retrospective studies, aHRs and CIs were log-transformed [45] and pooled using a random-effects model. A *p*-value of less than 0.05 was considered statistically significant.

Statistical heterogeneity was assessed using the Higgins I^2 index [46], calculated in CMA, with sources of heterogeneity discussed in Table 1 and expanded in the discussion. Given the limited number of studies, no funnel plot or Egger's regression test was used to assess publication bias [47]. Study quality was assessed with the Risk of Bias (ROB) 2.0 Cochrane Tool [48] for RCTs, NHLBI Quality Assessment Tool for Before-After Studies for single arm prospective studies [49], and the Newcastle Ottawa Scale [50] for retrospective studies. No subgroup or subgroup analyses were performed

Results

Our search yielded 10 studies [21–24,32–37] involving 13,726 patients, including 212 patients from prospective studies published between 2020 and 2024 (Table 1). One study [38] meeting the initial criteria was excluded, as it was a case series. Notably, the time periods for outcomes assessed varied significantly, ranging from 6 weeks to 6 months in prospective trials, and from 6 months to 5 years in retrospective studies. While two of the included studies were conference abstracts [24,34], the remainder were full-length, peer-reviewed articles. Risk of bias was minimal, as the studies were generally of high quality with few methodological concerns (Supplementary Table 3).

Prospective Studies

For prospective studies assessing SGLT2I use in ascites management, the primary outcome of large-volume paracentesis (LVP) incidence was lower with SGLT2Is compared to standard of care (SoC) (RR = 0.45, CI: 0.31–0.66, $p < 0.001$, $I^2 = 0\%$, $n = 2$, Figure 2A). Secondary outcomes for ascites management included a lower incidence of residual ascites (RR = 0.82, CI: 0.70–0.96, $p = 0.012$, $I^2 = 0\%$, $n = 2$, Figure 2B). Compared to baseline values, there was a statistically insignificant reduction in the mean loop diuretic dose of 39.1 mg (CI: –7.77 to

83.83, $p = 0.102$, $I^2 = 99.1\%$, $n = 2$, Figure 2C), but a significant reduction in mean body weight of 7.00 kg (CI: 6.04–14.44, $p < 0.001$, $I^2 = 11.5\%$, $n = 4$, Figure 2D).

For adverse event-related secondary outcomes, there was no significant difference in the incidence of acute kidney injury (AKI) (RR = 1.32, CI: 0.24–7.23, $p = 0.75$, $I^2 = 84.71\%$, $n = 2$, Figure 3A), new-onset hyponatraemia (RR = 2.63, CI: 0.99–6.93, $p = 0.051$, $I^2 = 3.79\%$, $n = 2$, Figure 3B), hepatic encephalopathy (RR = 1.55, CI: 0.71–3.41, $p = 0.819$, $I^2 = 0\%$, $n = 2$, Figure 3C), or urinary tract infections (UTIs) (RR = 2.71, CI: 0.93–7.89, $p = 0.067$, $I^2 = 0\%$, Figure 3D) compared to SoC diuretics.

Retrospective Studies

For retrospective studies assessing SGLT2I use in both compensated and decompensated cirrhosis, the primary outcome showed a lower mortality risk with SGLT2I use (aHR = 0.46, CI: 0.38–0.55, $p < 0.001$, $I^2 = 26.9\%$, $n = 3$, Figure 4A). Secondary outcomes included a lower risk of hepatic decompensations (aHR = 0.64, CI: 0.62–0.66, $p < 0.001$, $I^2 = 0\%$, $n = 2$, Figure 4B) and a lower incidence of ascites (aHR = 0.55, CI: 0.53–0.57, $p < 0.001$, $I^2 = 0\%$, $n = 2$, Figure 4C).

Discussion

Meta-Analysis Findings:

Our analysis demonstrates that SGLT2Is may have utility in populations with compensated and decompensated cirrhosis while being relatively safe. In retrospective studies, SGLT2Is were associated with lower mortality, hepatic decompensation, and ascites prevalence. Prospective trials showed that adding SGLT2Is to standard diuretic therapy led to a lower need for large-volume paracentesis (LVP) with no significant differences in the incidence of acute kidney injury (AKI), new-onset hyponatraemia, hepatic encephalopathy, or urinary tract infections (UTIs). The therapy also led to clinically significant reductions in loop diuretic use

and weight of approximately 40 mg and 7 kg respectively over 3 to 6 months, although the loop diuretic dose reduction did not meet statistical significance. Finally, new-onset hyponatraemia and UTIs showed a trend towards increases in the SGLT2I groups compared with control groups, despite these trends not being statistically significant.

Clinical Implications:

Ascites Management in Decompensated Cirrhosis:

The need for large-volume paracentesis (LVP) and the prevalence of residual ascites were lower, accompanied by a reduction in weight and diuretic dose. These data were pooled from randomised controlled trials (RCTs) and single-arm trials with a low risk of bias, revealing consistent results with low calculated heterogeneity. This demonstrates a strong certainty that SGLT2Is are potent in managing diuretic-resistant ascites when used as an adjunct with spironolactone and furosemide.

In addition to weight loss reflecting ascites control, the reduction in loop diuretic dose is clinically significant, as it likely reduces side effects such as hypokalaemia [51], which correlated with one trial measuring potassium imbalances [33], showing a higher, albeit insignificant, rate of hypokalaemia in the control group. In a meta-analysis for heart failure [51], SGLT2Is in conjunction with loop diuretics led to reductions in body weight and the daily dose of loop diuretics. This aligns with our findings in liver cirrhosis, which is similarly characterised by chronic renin-angiotensin-aldosterone system (RAAS) activation [8, 30, 51].

It is important to note that most patients in these trials were diuretic-resistant [32–34, 36], meaning ascites recurred despite maximally tolerated doses of loop and mineralocorticoid receptor antagonist (MRA) diuretics. The life expectancy for patients with diuretic-resistant

ascites is 6 to 12 months [52], and therefore the use of SGLT2Is could improve quality of life by reducing the necessity for hospitalisation, LVP, or diuretic titration.

It is also noteworthy that while one trial [31] measured weight loss at three months instead of six months, prospective studies [36, 37] that measured weight loss observed the greatest reduction from baseline to three months, indicating this as the most efficacious period.

Finally, many patients in our analysis receiving SGLT2Is had metabolic-associated steatotic liver disease (MASLD), which is associated with diabetes. Given that SGLT2Is exert their diuretic effect partly through glycosuria, and these drugs have been shown to be more potent diuretics in hyperglycaemic patients [53, 54], their role in ascites management may be diminished in patients with refractory ascites and cirrhosis but without diabetes. Further trials are needed to evaluate SGLT2Is in diverse aetiologies of liver cirrhosis.

Acute Kidney Injury in Decompensated Cirrhosis:

Our pooled analysis revealed no difference in the incidence of acute kidney injury (AKI) in decompensated cirrhosis. In decompensated cirrhosis, there are multiple predispositions to AKI, including splanchnic vasodilation reducing effective arterial blood volume, over-diuresis, and gastrointestinal bleeding [10, 12]. Therefore, conventional wisdom might suggest avoiding SGLT2Is to prevent precipitating renal injury.

Two randomised controlled trials (RCTs) in our analysis revealed conflicting data, effectively cancelling each other out. One trial [32] showed an insignificant increase in AKI in the control group, whereas the other [33] showed a significant increase in AKI in the SGLT2I group. Interestingly, the trial that showed increased AKI in the SGLT2I group involved patients with lower liver disease severity. The study noted that septic shock (unrelated to urinary tract

infection) was overrepresented in the SGLT2I group, occurring in 12 of 13 cases of AKI [33], potentially confounding the results.

Therefore, there may even be a protective effect of SGLT2Is against AKI in decompensated cirrhosis. This is further supported by a prospective study [37] demonstrating significantly lower creatinine levels in patients treated with SGLT2Is from baseline. This effect is likely due to the same mechanism by which SGLT2Is improve renal parameters in heart failure. SGLT2Is promote afferent vasoconstriction by increasing sodium delivery to the distal tubule, thereby limiting hyperfiltration and preventing nephron damage through tubuloglomerular feedback [53].

More RCTs with larger sample sizes and homogenous aetiologies of AKI are needed to validate this conjecture based on our appraisal of the available data.

Sodium Balance:

An interesting finding of our pooled analysis was that SGLT2Is in cirrhosis trended towards an increase in new-onset hyponatraemia based on the two randomised controlled trials (RCTs). SGLT2Is promote osmotic diuresis and natriuresis through the sodium-glucose co-transporter-2 receptor; however, most existing evidence demonstrates the opposite effect. SGLT2Is typically promote more water loss than sodium loss, which would lead to possible hypernatraemia due to volume depletion, not hyponatraemia. SGLT2Is have also been cited as a potential treatment for hyponatraemia [55].

In cirrhosis, similar to heart failure, there is pre-existing free water excess leading to hyponatraemia due to chronic renin-angiotensin-aldosterone system (RAAS) activation [2, 30]. In congestive heart failure (CHF), trends have been observed where SGLT2Is increased serum sodium levels [56]. A post-hoc analysis of one trial revealed decreased serum sodium in the

placebo group at two weeks, followed by an increase above baseline by eight months, and another trial showed an increase in new-onset CHF [57].

Our study's results could be explained by several factors. First, while the incidence of new-onset hyponatraemia trended towards an increase, included prospective studies and a case series [36–38] revealed an overall increase in serum sodium from baseline. Therefore, it is possible there is an overall increase in serum sodium, but an increased incidence of new-onset hyponatraemia in some cases. Unlike heart failure patients and patients in some studies where sodium levels increased from baseline [37, 38], patients in both RCTs had diuretic-resistant ascites and were receiving high doses of diuretics, including 400 mg of spironolactone and 160 mg of furosemide. The addition of an SGLT2I in this setting may have increased the risk of hyponatraemia.

Notably, the majority of new-onset hyponatraemia cases in one trial [32] were minor, within the range of >130 mmol/L, so the clinical relevance is uncertain. More RCTs are necessary to assess the trend towards new-onset hyponatraemia with SGLT2I use in diuretic-resistant ascites, as observed in our meta-analysis.

Hepatic Encephalopathy:

As previously mentioned, SGLT2Is were shown to be associated with a trend towards hyponatraemia in the randomised controlled trials (RCTs) of our study [32, 33], as well as hypokalaemia [33], possibly due to a synergistic effect with other diuretics. Both of these electrolyte disturbances are associated with hepatic encephalopathy (HE) [13, 18], possibly through osmotic shifts [13] and renal ammonia production [58].

Additionally, hypernatraemia, dehydration, and acidosis, known side effects of SGLT2Is in the general population, are further potential triggers for HE. Exacerbation of HE was also

observed in an animal study where rats with induced biliary cirrhosis were administered SGLT2Is [59]. Therefore, it is plausible to predict an increased rate of HE with SGLT2I use, particularly in patients with decompensated cirrhosis.

However, this association was not observed in our pooled analysis, which found no notable link between SGLT2I use and HE. These findings suggest that SGLT2Is are unlikely to be significant triggers of HE in decompensated cirrhosis. Nonetheless, further studies are needed to confirm this conclusion.

Urinary Tract Infections:

Cirrhotic patients are immunosuppressed due to the synthetic dysfunction of antibacterial proteins within both the innate and adaptive immune systems [16], making them susceptible to bacterial infections. Given that SGLT2Is promote glycosuria, it has been postulated that they increase the risk of bacterial urinary tract infections (UTIs) [1]. Coupled with the immunocompromise present in cirrhosis, this suggests that patients with cirrhosis would be at higher risk of developing UTIs when using SGLT2Is. However, our study only found a trend towards an increase in bacterial UTIs in decompensated cirrhosis.

This finding is consistent with data on SGLT2Is and UTIs in the general population [59], although a subgroup analysis of a meta-analysis [60] revealed a significant increase in UTIs with prolonged use beyond one year. In our study, most patients with decompensated cirrhosis were exposed to SGLT2Is for up to six months, which aligns with the life expectancy for many patients with diuretic-resistant ascites [52] and the period required to achieve a clinically relevant reduction in ascites [32, 33, 38]. Therefore, the short-term use of SGLT2Is could outweigh the risk of UTIs in diuretic-resistant ascites.

Caution should be exercised in cirrhotic patients with recent UTIs, sepsis, or other forms of immunocompromise. In one RCT [33], while the UTI rate was not higher in the SGLT2I group, there were 11 total infections in the SGLT2I group versus four in the control group, a difference that reached statistical significance. No other included study measured total infections.

Additionally, a retrospective case-control study [61] assessing the risk of developing bacteraemia in urosepsis while receiving SGLT2Is through multivariate regression found that cirrhosis was the only comorbidity significantly associated with an increased risk of bacteraemia in patients with UTI. Bacteraemia and/or sepsis can lead to acute-on-chronic liver failure [10], shock in an already vasoplegic patient [10], or seeding of the peritoneal cavity, causing spontaneous bacterial peritonitis (SBP) [62].

In patients with compensated cirrhosis, there are no head-to-head studies comparing UTI incidence with SGLT2I use versus control. Nevertheless, one might presume that the cardiovascular and reno-protective benefits of SGLT2Is would outweigh the risk of UTIs, as observed in the general population [60].

Mortality and Hepatic Decompensation:

Our analysis revealed a significant reduction in the risk of mortality and hepatic decompensation with SGLT2I use. This finding is similar to randomised controlled trials (RCTs) on the drug in congestive heart failure (CHF) [63], where SGLT2Is were noted to reduce CHF exacerbations and mortality, likely through their effects on diuresis, reduced inflammation, and improved renal function [2, 3]. These same mechanisms may be relevant in cirrhosis, where portal hypertension and fluid overload are major drivers of morbidity and mortality.

Our analysis focused more on compensated disease [22, 23] involving populations with low Model for End-Stage Liver Disease (MELD) scores. The decreased mortality and hepatic

decompensation risk may stem from several mechanisms. An included single-arm study measuring haemodynamic outcomes [36] demonstrated that empagliflozin improves cardiovascular function in cirrhotic patients by decreasing systemic vascular resistance and increasing natriuresis, likely through renin-angiotensin-aldosterone system (RAAS) suppression, which has previously been documented with SGLT2I use in liver cirrhosis [30].

The consistent ability of SGLT2Is to provide reno-protective benefits, reflected by reduced albuminuria [53], may be important for cirrhotic patients, as it could delay the progression of renal dysfunction, lower the incidence of hepatorenal pathophysiology [14], and minimise sarcopenia, which is an independent predictor of mortality in cirrhosis [19]. Additionally, the diuretic effect noted in our analysis could contribute to reduced portal pressure, thereby lowering the risk of variceal development and subsequent bleeding.

Finally, as demonstrated in several RCTs [4–7], SGLT2Is may delay or improve liver fibrosis and inflammation, leading to a delay in the development of portal hypertension. Supporting this, a case series [38] found that Child-Pugh scores either decreased or remained the same over six months, and in two patients, ascites became non-detectable. Furthermore, one RCT [32] noted a three-point increase in MELD-Na scores in the control group, while the SGLT2I group's MELD-Na scores remained near baseline.

Further long-term prospective evidence is needed to support a mortality benefit, particularly in patients with decompensated cirrhosis.

Limitations of Meta-Analysis:

Our meta-analysis has several limitations. The most significant is that the pooled analysis of prospective trials was underpowered, with only two to four effect sizes pooled per outcome.

Second, the analysis of retrospective studies is prone to selection bias, such as SGLT2Is not being prescribed to more tenuous, sicker patients. This was somewhat mitigated by propensity matching for important variables such as the Model for End-Stage Liver Disease-Sodium (MELD-Na) score [23, 24]. Additionally, retrospective studies relied on less granular data, such as International Classification of Diseases, 10th Edition (ICD-10) codes.

Third, the time periods for measuring outcomes, the types of SGLT2Is used, cirrhosis status, and the control groups to which SGLT2Is were compared varied, likely introducing heterogeneity into the analysis.

Fourth, most patients in our review had metabolic-associated steatotic liver disease (MASLD), whereas patients with other aetiologies of cirrhosis may not experience the same benefits or may have different reactions to SGLT2Is. For example, a case series documented SGLT2Is triggering diabetic ketoacidosis (DKA) in two patients with both alcoholic cirrhosis and diabetes.

Given these limitations, it is essential to carefully appraise each study's outcomes and place our findings in the context of existing literature.

Conclusion:

Based on our systematic review and meta-analysis, the use of SGLT2Is in varying degrees of cirrhosis is associated with several benefits. These include lower mortality and a reduced hepatic decompensation rate in compensated cirrhosis, as well as a lower need for large-volume paracentesis (LVP) and loop diuretics in treatment-resistant ascites in decompensated cirrhosis. These benefits were observed without a significant increase in urinary tract infections (UTIs), new-onset hyponatraemia, or hepatic encephalopathy, although the overall risk of infection warrants further investigation.

More randomised controlled trials (RCTs) in both compensated and decompensated cirrhosis populations, with uniform outcome measures and consistent SGLT2I agents, are needed to confirm our study's findings.

What Is Known

- SGLT2Is confer cardiovascular and reno-protective benefits in the general population as well as those with Congestive Heart Failure (CHF)
- Recently, SGLT2I was shown to improve the metabolic profiles of patients with Metabolic-Associated Steatotic Liver Disease (MASLD), however, there is limited data on the efficacy and safety of SGLT2I in liver cirrhosis.

What Is New

- SGLT2Is are an effective adjunct to loop diuretics and mineralocorticoids for diuretic-resistant ascites for up to 6 months, leading to clinically significant 7 kg weight loss and reduction in loop diuretic dose.
- SGLT2Is are associated with mortality benefit and decreased hepatic decompensations in cirrhosis and may have a role in slowing progression of cirrhosis.
- While SGLT2Is do not result in electrolyte derangements or increased renal injury, there may be a concern for an increased risk of overall infection while on SGLT2I which needs to be further explored, and caution should be advised in patients with recent or prior infections.

Citations:

1. Padda IS, Mahtani AU, Parmar M. Sodium-Glucose Transport Protein 2 (SGLT2) Inhibitors [Internet]. PubMed. Treasure Island (FL): StatPearls Publishing; 2023. Available from: <https://www.ncbi.nlm.nih.gov/books/NBK576405/>
2. Zelniker TA, Wiviott SD, Raz I, Im K, Goodrich EL, Bonaca MP, et al. SGLT2 inhibitors for primary and secondary prevention of cardiovascular and renal outcomes in type 2 diabetes: a systematic review and meta-analysis of cardiovascular outcome trials. *The Lancet*. 2019 Jan;393(10166):31–9.
3. Nespoux J, Vallon V. Renal effects of SGLT2 inhibitors. *Current Opinion in Nephrology and Hypertension*. 2020 Mar;29(2):190–8.
4. Jin Z, Yuan Y, Zheng C, Liu S, Weng H. Effects of sodium-glucose co-transporter 2 inhibitors on liver fibrosis in non-alcoholic fatty liver disease patients with type 2 diabetes mellitus: An updated meta-analysis of randomized controlled trials. *J Diabetes Complications* [Internet]. 2023;37(8):108558. Available from: <http://dx.doi.org/10.1016/j.jdiacomp.2023.108558>
5. Wei Q, Xu X, Guo L, Li J, Li L. Effect of SGLT2 inhibitors on type 2 diabetes mellitus with non-alcoholic fatty liver disease: A meta-analysis of randomized controlled trials. *Front Endocrinol (Lausanne)* [Internet]. 2021;12:635556. Available from: <http://dx.doi.org/10.3389/fendo.2021.635556>
6. Hsiang JC, Wong VW-S. SGLT2 inhibitors in liver patients. *Clin Gastroenterol Hepatol* [Internet]. 2020;18(10):2168-2172.e2. Available from: <http://dx.doi.org/10.1016/j.cgh.2020.05.021>
7. Liu H, Hao Y-M, Jiang S, Baihetiyaer M, Li C, Sang G-Y, et al. Evaluation of MASLD fibrosis, FIB-4 and APRI score in MASLD combined with T2DM and MACCEs receiving SGLT2 inhibitors treatment. *Int J Gen Med* [Internet]. 2024;17:2613–25. Available from: <http://dx.doi.org/10.2147/IJGM.S460200>
8. Miyamoto Y, Honda A, Yokose S, Nagata M, Miyamoto J. The effects of SGLT2 inhibitors on liver cirrhosis patients with refractory ascites: A literature review. *J Clin Med* [Internet]. 2023;12(6). Available from: <http://dx.doi.org/10.3390/jcm12062253>
9. *Practical Hepatic Pathology: A Diagnostic Approach: Second Edition*. 2017.
10. Tapper EB, Parikh ND. Diagnosis and management of cirrhosis and its complications: A review. *JAMA* [Internet]. 2023;329(18):1589. Available from: <http://dx.doi.org/10.1001/jama.2023.5997>
11. Kumar R, Kumar S, Prakash SS. Compensated liver cirrhosis: Natural course and disease-modifying strategies. *World J Methodol* [Internet]. 2023;13(4):179–93. Available from: <http://dx.doi.org/10.5662/wjm.v13.i4.179>
12. Damico G. Towards a new definition of decompensated cirrhosis D’Amico, Gennaro et al. *Journal of Hepatology*. 76(1):202–7.

13. Romero-Gómez M, Montagnese S, Jalan R. Hepatic encephalopathy in patients with acute decompensation of cirrhosis and acute-on-chronic liver failure. *J Hepatol* [Internet]. 2015;62(2):437–47. Available from: <http://dx.doi.org/10.1016/j.jhep.2014.09.005>
14. Ranasinghe IR, Sharma B, Bashir K. Hepatorenal syndrome. In: StatPearls. Treasure Island (FL): StatPearls Publishing; 2024.
15. Asada S, Kaji K, Nishimura N, Koizumi A, Matsuda T, Tanaka M, et al. Tofogliflozin delays portal hypertension and hepatic fibrosis by inhibiting sinusoidal capillarization in cirrhotic rats. *Cells* [Internet]. 2024 [cited 2024 Dec 8];13(6):538. Available from: <https://www.mdpi.com/2073-4409/13/6/538>
16. Albillos A, Martin-Mateos R, Van der Merwe S, Wiest R, Jalan R, Álvarez-Mon M. Cirrhosis-associated immune dysfunction. *Nat Rev Gastroenterol Hepatol* [Internet]. 2022 [cited 2024 Dec 8];19(2):112–34. Available from: <https://www.nature.com/articles/s41575-021-00520-7>
17. Huang L, Han H. Diuretic use in patients with cirrhosis and complications of portal hypertension: Should we rethink the use of furosemide as first line? *Clin Liver Dis (Hoboken)* [Internet]. 2024;23(1):e0090. Available from: <http://dx.doi.org/10.1097/CLD.0000000000000090>
18. Younas A, Riaz J, Chughtai T, Maqsood H, Saim M, Qazi S, et al. Hyponatremia and its correlation with hepatic encephalopathy and severity of liver disease. *Cureus* [Internet]. 2021;13(2):e13175. Available from: <http://dx.doi.org/10.7759/cureus.13175>
19. Zhang S, Qi Z, Wang Y, Song D, Zhu D. Effect of sodium-glucose transporter 2 inhibitors on sarcopenia in patients with type 2 diabetes mellitus: a systematic review and meta-analysis. *Front Endocrinol (Lausanne)* [Internet]. 2023;14:1203666. Available from: <http://dx.doi.org/10.3389/fendo.2023.1203666>
20. Xiao L, Dai M, Zhao F, Shen Y, Kwan RYC, Salvador JT, et al. Assessing the risk factors associated with sarcopenia in patients with liver cirrhosis: a case-control study. *Sci Rep* [Internet]. 2023 [cited 2024 Dec 8];13(1):21845. Available from: <https://www.nature.com/articles/s41598-023-48955-z>
21. Saffo S, Garcia-Tsao G, Taddei T. SGLT2 inhibitors in patients with cirrhosis and diabetes mellitus: A tertiary center cohort study and insights about a potential therapeutic target for portal hypertension. *J Diabetes* [Internet]. 2021;13(3):265–9. Available from: <http://dx.doi.org/10.1111/1753-0407.13136>
22. Saffo S, Kaplan DE, Mahmud N, Serper M, John BV, Ross JS, et al. Impact of SGLT2 inhibitors in comparison with DPP4 inhibitors on ascites and death in veterans with cirrhosis on metformin. *Diabetes Obes Metab* [Internet]. 2021;23(10):2402–8. Available from: <http://dx.doi.org/10.1111/dom.14488>
23. Huynh DJ, Renelus BD, Jamorabo DS. Reduced mortality and morbidity associated with metformin and SGLT2 inhibitor therapy in patients with type 2 diabetes mellitus and cirrhosis. *BMC Gastroenterol* [Internet]. 2023;23(1):450. Available from: <http://dx.doi.org/10.1186/s12876-023-03085-8>

24. Abu-Hammour M-N, Vignarajah A, Vigneswaramoorthy N, Chiang D. S1671 association of sodium glucose co-transporter-2 inhibitors and serious liver events in patients with cirrhosis on diuretics: A global cohort study. *Am J Gastroenterol* [Internet]. 2024;119(10S):S1218–S1218. Available from: <http://dx.doi.org/10.14309/01.ajg.0001036052.95835.d7>
25. Miyamoto Y, Honda A, Yokose S, Nagata M, Miyamoto J. Weaning from concentrated ascites reinfusion therapy for refractory ascites by SGLT2 inhibitor. *Clin Kidney J* [Internet]. 2022;15(4):831–3. Available from: <http://dx.doi.org/10.1093/ckj/sfab266>
26. Kalambokis GN, Tsiakas I, Filippas-Ntekuan S, Christaki M, Despotis G, Milionis H. Empagliflozin eliminates refractory ascites and hepatic hydrothorax in a patient with primary biliary cirrhosis. *Am J Gastroenterol* [Internet]. 2021;116(3):618–9. Available from: <http://dx.doi.org/10.14309/ajg.0000000000000995>
27. Montalvo-Gordon I, Chi-Cervera LA, García-Tsao G. Sodium-glucose cotransporter 2 inhibitors ameliorate ascites and peripheral edema in patients with cirrhosis and diabetes. *Hepatology* [Internet]. 2020;72(5):1880–2. Available from: <http://dx.doi.org/10.1002/hep.31270>
28. Gao Y, Wei L, Zhang DD, Chen Y, Hou B. SGLT2 inhibitors: A new dawn for recurrent/refractory cirrhotic ascites. *J Clin Transl Hepatol* [Internet]. 2021;9(6):795–7. Available from: <http://dx.doi.org/10.14218/JCTH.2021.00418>
29. Gao Y, Liu X, Gao Y, Duan M, Hou B, Chen Y. Pharmacological interventions for cirrhotic ascites: From challenges to emerging therapeutic horizons. *Gut Liver* [Internet]. 2024 [cited 2024 Dec 8];18(6):934–48. Available from: https://www.gutnliver.org/journal/view.html?pn=current_issue&uid=2219&vmd=Full
30. Sifarikas C, Kapelios CJ, Papatheodoridi M, Vlachogiannakos J, Tentolouris N, Papatheodoridis G. Sodium-glucose linked transporter 2 inhibitors in liver cirrhosis: Beyond their antidiabetic use. *Liver Int* [Internet]. 2024;44(4):884–93. Available from: <http://dx.doi.org/10.1111/liv.15851>
31. Runyon BA, AASLD Practice Guidelines Committee. Management of adult patients with ascites due to cirrhosis: an update: An update†‡§. *Hepatology* [Internet]. 2009;49(6):2087–107. Available from: <http://dx.doi.org/10.1002/hep.22853>
32. Bakosh, M.F., Ghazy, R.M., Ellakany, W.I. *et al.* Empagliflozin as a novel therapy for cirrhotic refractory ascites: a randomized controlled study. *Egypt Liver Journal* **14**, 76 (2024). Available from: <https://doi.org/10.1186/s43066-024-00383-y>
33. Singh V, De A, Aggrawal R, Singh A, Charak S, Bhagat N. Safety and efficacy of dapagliflozin in recurrent ascites: A pilot study. *Dig Dis Sci* [Internet]. 2024; Available from: <http://dx.doi.org/10.1007/s10620-024-08667-4>
34. Empagliflozin in diuretic refractory ascites [Internet]. *ctv.veeva.com*. [cited 2024 Dec 7]. Available from: <https://ctv.veeva.com/study/empagliflozin-in-diuretic-refractory-ascites>
35. Shen I, Stojanova J, Yeo M, Olsen N, Lockart I, Wang M, et al. A potential novel treatment for cirrhosis-related ascites: Empagliflozin is safe and tolerable in advanced

- chronic liver disease. *Br J Clin Pharmacol* [Internet]. 2024;90(10):2529–38. Available from: <http://dx.doi.org/10.1111/bcp.16139>
36. Kalambokis G, Tsiakas I, Filippas-Ntekouan S, Christaki M, Milionis H. Empagliflozin controls cirrhotic refractory ascites along with improvement of natriuresis and circulatory, cardiac, and renal function: A pilot study. *Eur J Intern Med* [Internet]. 2024;130:162–4. Available from: <http://dx.doi.org/10.1016/j.ejim.2024.08.012>
37. Praveen S, Department of Gastroenterology, Sir Ganga Ram Hospital, New Delhi, India., Anikhindi A, Ashish K, Anil A, Department of Gastroenterology, Sir Ganga Ram Hospital, New Delhi, India., et al. Sodium glucose co-transporter-2 (SGLT) inhibitors in patients with compensated cirrhosis and diabetes: A prospective study. *J Clin Images Med Case Rep* [Internet]. 2023 [cited 2024 Dec 7];4(11). Available from: <https://www.ijgah.com/articles/ijgh-v5-1007.pdf>
38. Seidita A, Mandreucci F, Pistone M, Calderone S, Giuliano A, Chiavetta M, et al. Sodium-glucose cotransporter 2 inhibition in patients with liver cirrhosis and diabetes: a possible role in ascites control? *Ital J Med* [Internet]. 2024;18(4). Available from: <http://dx.doi.org/10.4081/itjm.2024.1829>
39. Page MJ, McKenzie JE, Bossuyt PM, Boutron I, Hoffmann TC, Mulrow CD, et al. The PRISMA 2020 statement: an updated guideline for reporting systematic reviews. *BMJ* [Internet]. 2021;372:n71. Available from: <http://dx.doi.org/10.1136/bmj.n71>
40. Singh J, Abrams KR, Bujkiewicz S. Incorporating single-arm studies in meta-analysis of randomised controlled trials: a simulation study. *BMC Med Res Methodol* [Internet]. 2021;21(1):114. Available from: <http://dx.doi.org/10.1186/s12874-021-01301-1>
41. Bydder GM, Kreel L. Attenuation values of fluid collections within the abdomen. *J Comput Assist Tomogr* [Internet]. 1980;4(2):145–50. Available from: <http://dx.doi.org/10.1097/00004728-198004000-00002>
42. Borenstein M, Hedges LV, Higgins JPT, Rothstein HR, Ben Van Den A. Introduction to meta-analysis. *Int Coach Psychol Rev* [Internet]. 2020;15(2):121–2. Available from: <http://dx.doi.org/10.53841/bpsicpr.2020.15.2.121>
43. Difference in means [Internet]. Statrek.com. [cited 2024 Dec 7]. Available from: <https://stattrek.com/sampling/difference-in-means>
44. Katzung BG, Vanderah TW. eds. *Basic & Clinical Pharmacology, 15e*. McGraw-Hill; 2021. Accessed December 07, 2024. <https://accessmedicine.mhmedical.com/content.aspx?bookid=2988§ionid=250593594>
45. Higgins JPT, White IR, Anzueto-Cabrera J. Meta-analysis of skewed data: combining results reported on log-transformed or raw scales: META-ANALYSIS OF SKEWED DATA. *Stat Med* [Internet]. 2008;27(29):6072–92. Available from: <http://dx.doi.org/10.1002/sim.3427>

46. Higgins JPT, Thompson SG, Deeks JJ, Altman DG. Measuring inconsistency in meta-analyses. *BMJ* [Internet]. 2003;327(7414):557–60. Available from: <http://dx.doi.org/10.1136/bmj.327.7414.557>
47. Egger M, Davey Smith G, Schneider M, Minder C. Bias in meta-analysis detected by a simple, graphical test. *BMJ* [Internet]. 1997;315(7109):629–34. Available from: <http://dx.doi.org/10.1136/bmj.315.7109.629>
48. Sterne JAC, Savović J, Page MJ, Elbers RG, Blencowe NS, Boutron I, et al. RoB 2: a revised tool for assessing risk of bias in randomised trials. *BMJ* [Internet]. 2019;366:l4898. Available from: <http://dx.doi.org/10.1136/bmj.l4898>
49. Study quality assessment tools [Internet]. NHLBI, NIH. [cited 2024 Dec 7]. Available from: <https://www.nlm.nih.gov/health-topics/study-quality-assessment-tools>
50. Ottawa hospital research institute [Internet]. Ohri.ca. [cited 2024 Dec 7]. Available from: http://www.ohri.ca/programs/clinical_epidemiology/oxford.asp
51. Carvalho PEP, Veiga TMA, Simões E Silva AC, Gewehr DM, Dagostin CS, Fernandes A, et al. Cardiovascular and renal effects of SGLT2 inhibitor initiation in acute heart failure: a meta-analysis of randomized controlled trials. *Clin Res Cardiol* [Internet]. 2023;112(8):1044–55. Available from: <http://dx.doi.org/10.1007/s00392-022-02148-2>
52. Siqueira F, Kelly T, Saab S. Refractory ascites: Pathogenesis, clinical impact, and management. *Gastroenterol Hepatol (N Y)*. 2009;5(9):647–56.
53. Delanaye P, Scheen AJ. The diuretic effects of SGLT2 inhibitors: A comprehensive review of their specificities and their role in renal protection. *Diabetes Metab* [Internet]. 2021;47(6):101285. Available from: <http://dx.doi.org/10.1016/j.diabet.2021.101285>
54. Fioretto P, Zambon A, Rossato M, Busetto L, Vettor R. SGLT2 inhibitors and the diabetic kidney. *Diabetes Care* [Internet]. 2016;39 Suppl 2:S165-71. Available from: <http://dx.doi.org/10.2337/dcS15-3006>
55. Tang H, Xu C, Zhang P, Luo T, Huang Y, Yang X. A profile of SGLT-2 inhibitors in hyponatremia: The evidence to date. *Eur J Pharm Sci* [Internet]. 2023;184(106415):106415. Available from: <http://dx.doi.org/10.1016/j.ejps.2023.106415>
56. Li S, Levy WC. Impact of SGLT2 inhibitors on serum sodium in heart failure with reduced ejection fraction. *JACC Heart Fail* [Internet]. 2022;10(5):319–20. Available from: <http://dx.doi.org/10.1016/j.jchf.2022.02.005>
57. Yeoh SE, Docherty KF, Jhund PS, Petrie MC, Inzucchi SE, Køber L, et al. Relationship of dapagliflozin with serum sodium: Findings from the DAPA-HF trial. *JACC Heart Fail* [Internet]. 2022;10(5):306–18. Available from: <http://dx.doi.org/10.1016/j.jchf.2022.01.019>
58. Mikkelsen ACD, Thomsen KL, Vilstrup H, Aagaard NK. Hypokalaemia - an active contributor to hepatic encephalopathy? *Metab Brain Dis* [Internet]. 2023;38(5):1765–8. Available from: <http://dx.doi.org/10.1007/s11011-022-01096-0>
59. Hsu S-J, Huang H-C, Pun CK, Chang C-C, Chuang C-L, Huang Y-H, et al. Sodium-glucose cotransporter-2 inhibition exacerbates hepatic encephalopathy in biliary cirrhotic

- rats. *J Pharmacol Exp Ther* [Internet]. 2022;383(1):25–31. Available from: <http://dx.doi.org/10.1124/jpet.122.001289>
60. Liu J, Li L, Li S, Jia P, Deng K, Chen W, et al. Effects of SGLT2 inhibitors on UTIs and genital infections in type 2 diabetes mellitus: a systematic review and meta-analysis. *Sci Rep* [Internet]. 2017;7(1):2824. Available from: <http://dx.doi.org/10.1038/s41598-017-02733-w>
61. Covington EW, Slaten K, Harnden A. Analysis of SGLT2 inhibitor therapy and other potential risk factors for the development of bacteremia in patients with urosepsis. *J Pharm Technol* [Internet]. 2022;38(2):67–74. Available from: <http://dx.doi.org/10.1177/87551225221074578>
62. Ribeiro TC, Chebli JM, Kondo M, Gaburri PD, Chebli LA, Feldner ACA. Spontaneous bacterial peritonitis: How to deal with this life-threatening cirrhosis complication? *Ther Clin Risk Manag* [Internet]. 2008;4(5):919–25. Available from: <http://dx.doi.org/10.2147/tcrm.s2688>
63. Cardoso R, Graffunder FP, Ternes CMP, Fernandes A, Rocha AV, Fernandes G, et al. SGLT2 inhibitors decrease cardiovascular death and heart failure hospitalizations in patients with heart failure: A systematic review and meta-analysis. *EClinicalMedicine* [Internet]. 2021;36(100933):100933. Available from: <http://dx.doi.org/10.1016/j.eclinm.2021.100933>

Figure 1.) PRISMA 2020 flow diagram for new systematic reviews which included searches of databases and registers only

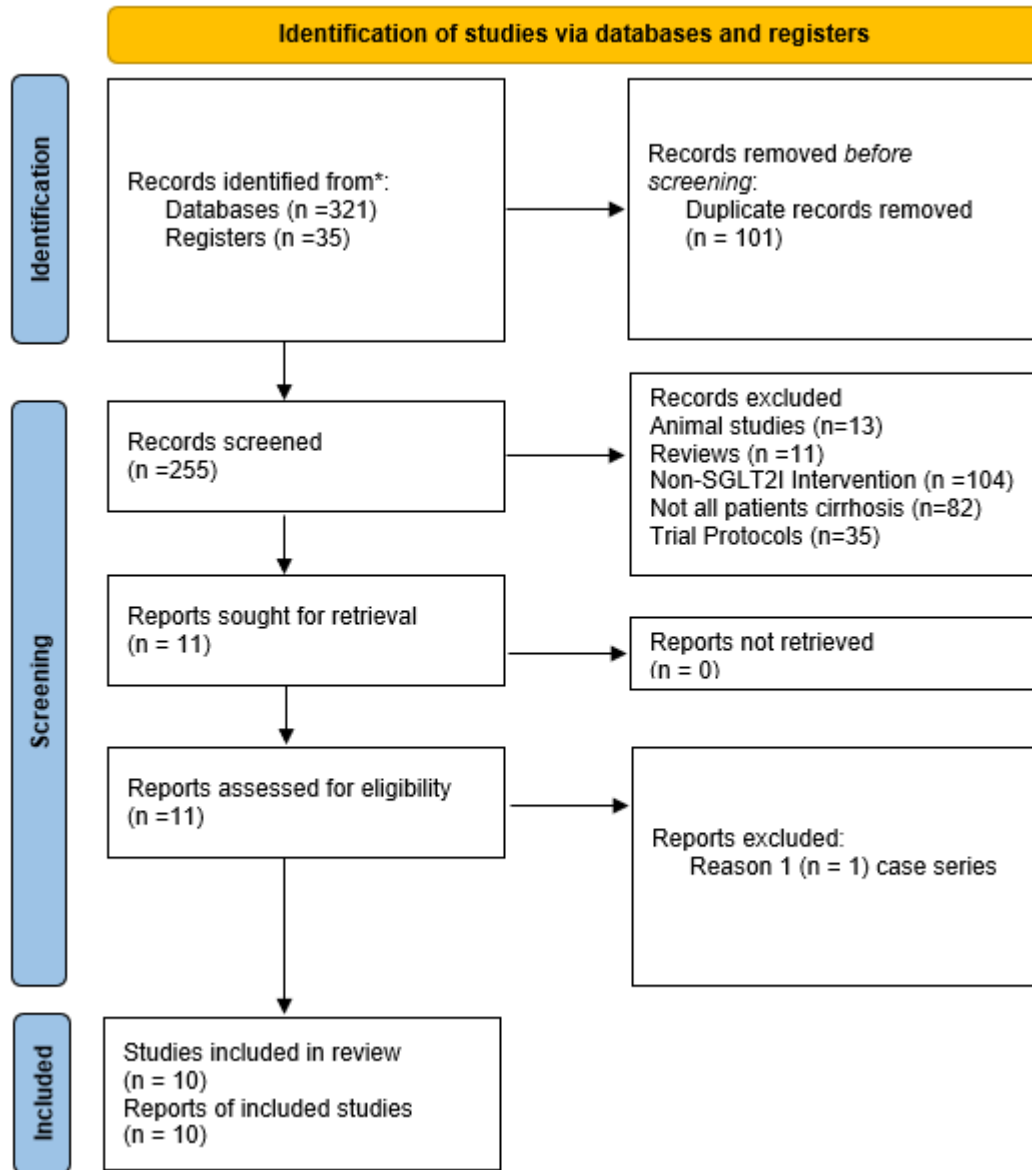
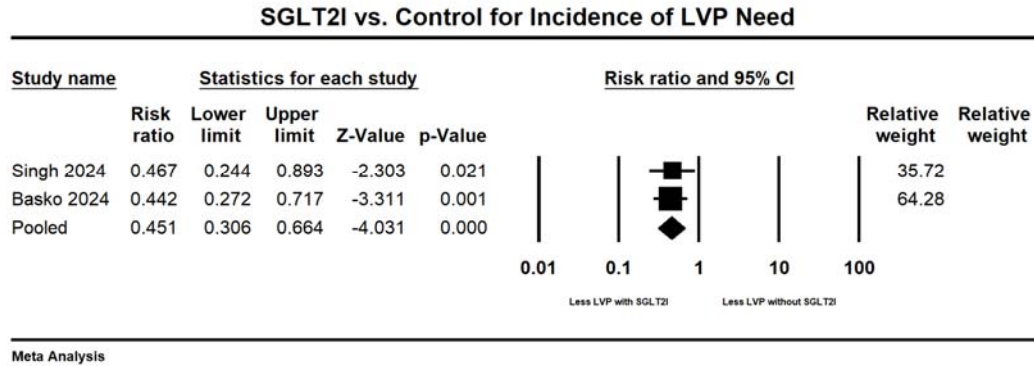


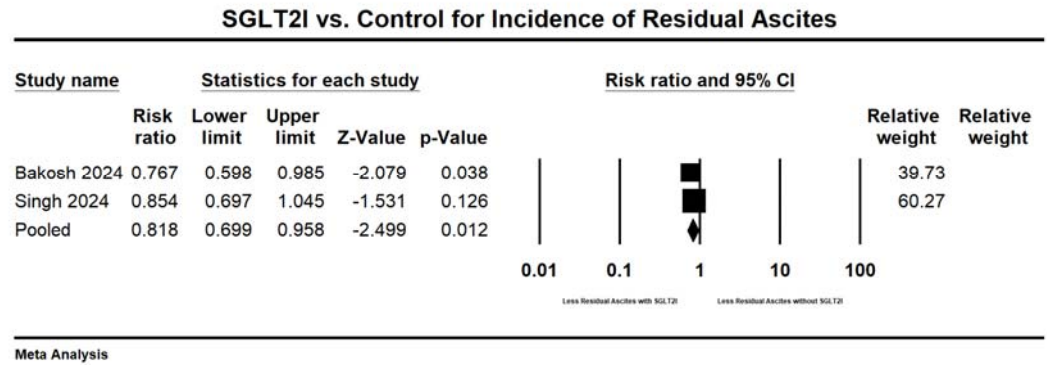
Figure 2A-B.) SGLT2I & Standard Diuretics vs. Standard Diuretics alone in Management in Diuretic-Resistant Ascites in Liver Cirrhosis

A.) Incidence of LVP

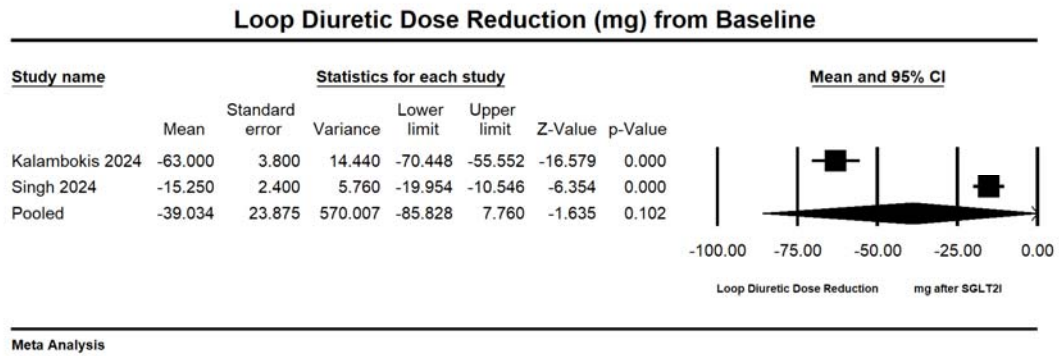


B.) Incidence of Residual Ascites

C.)



Reduction from Baseline with SGLT2I



D.) Weight Reduction in Kilograms (kg) from Baseline with SGLT2I

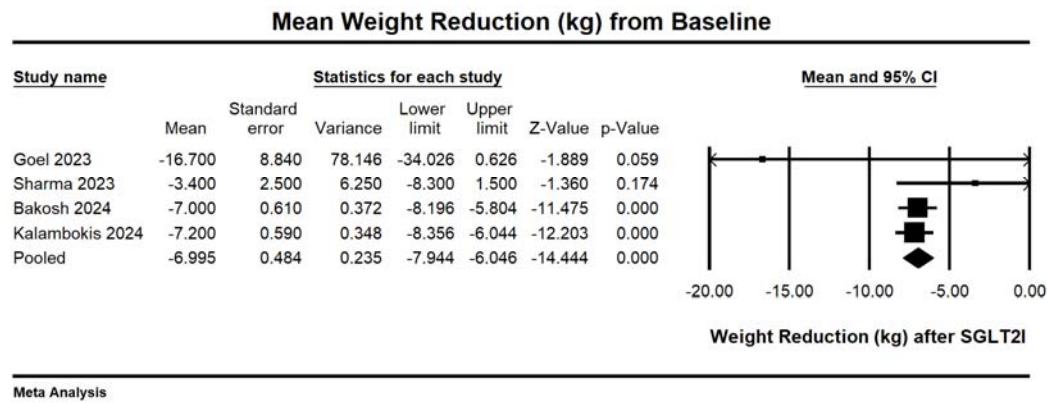
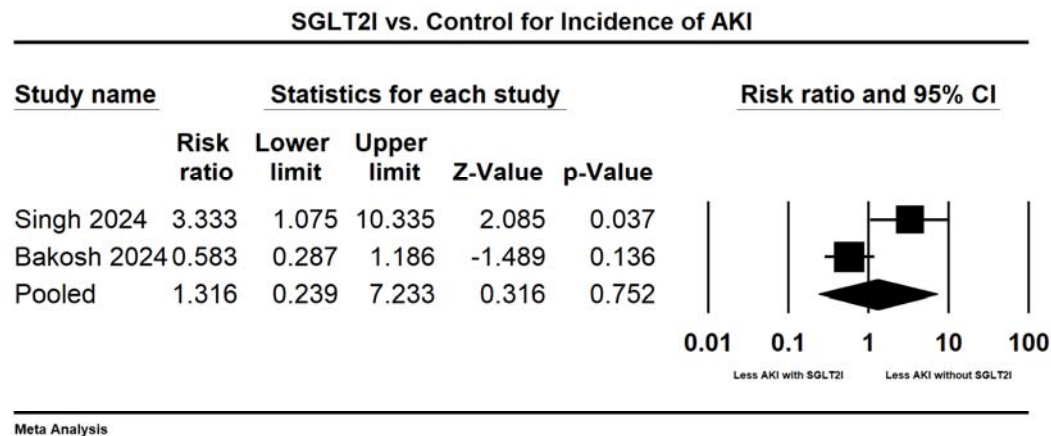
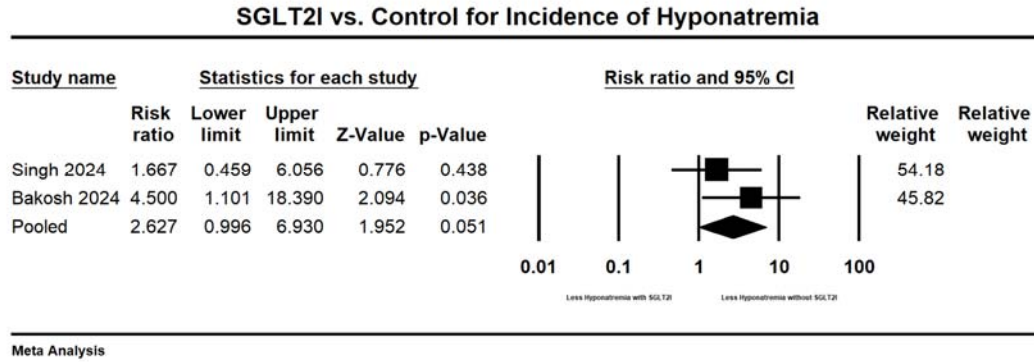


Figure 3A-D.) Adverse Effects SGLT2I & Standard Diuretics vs. Standard Diuretics in Diuretic-Resistant Ascites in Liver Cirrhosis

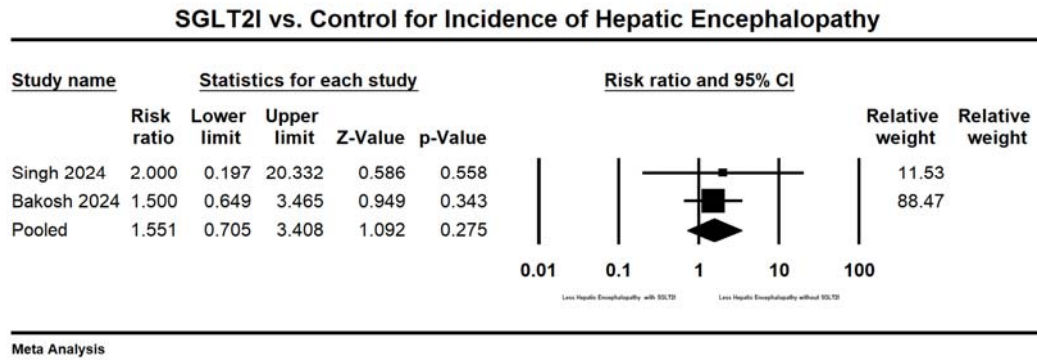
A.) AKI Incidence



B.) New Onset Hyponatremia Incidence



C.) Hepatic Encephalopathy Incidence



D.) UTI Incidence

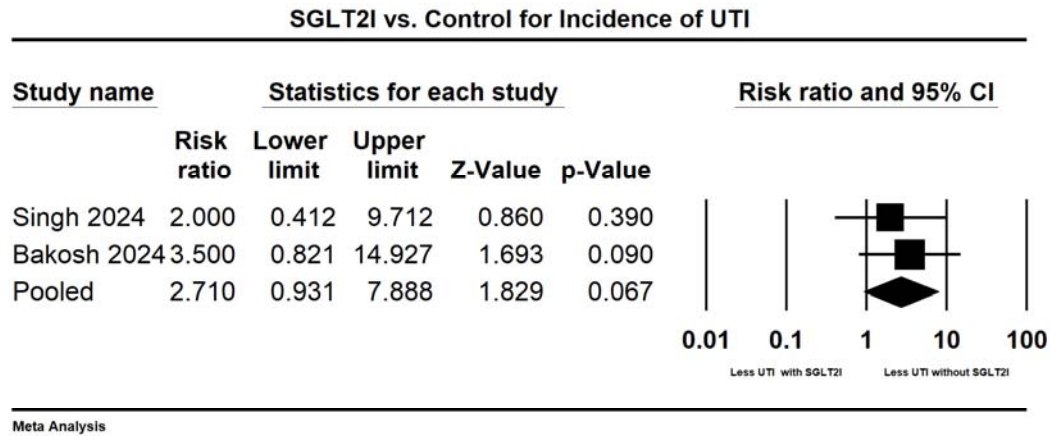
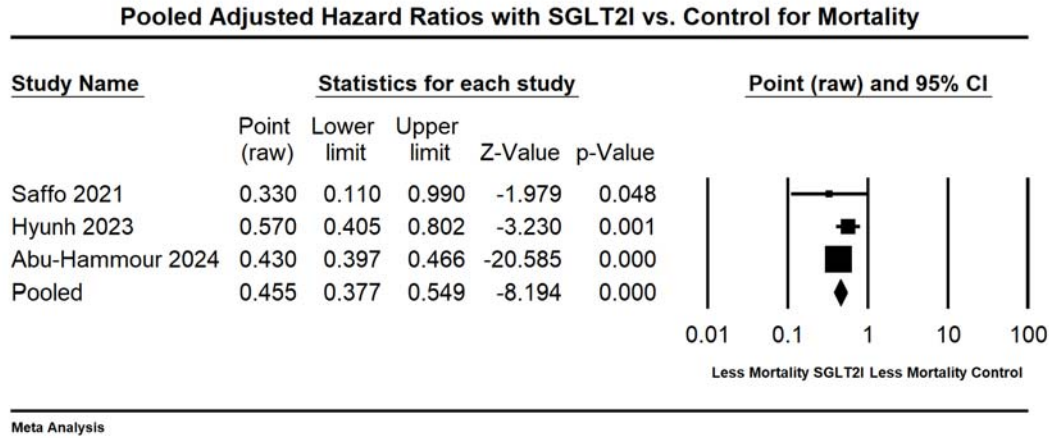
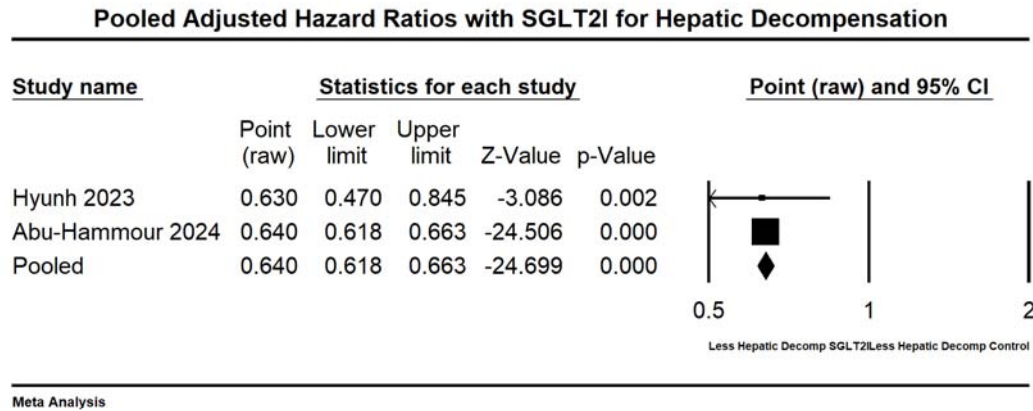


Figure 4A-C.) Retrospective Data on SGLT2I Exposure vs. Control

A.) Adjusted Hazard Ratio (aHR) for Mortality



B.) Adjusted Hazard Ratio (aHR) for Hepatic Decompensations



C.) Adjusted Hazard Ratio (aHR) for Ascites Incidence in All Cirrhosis

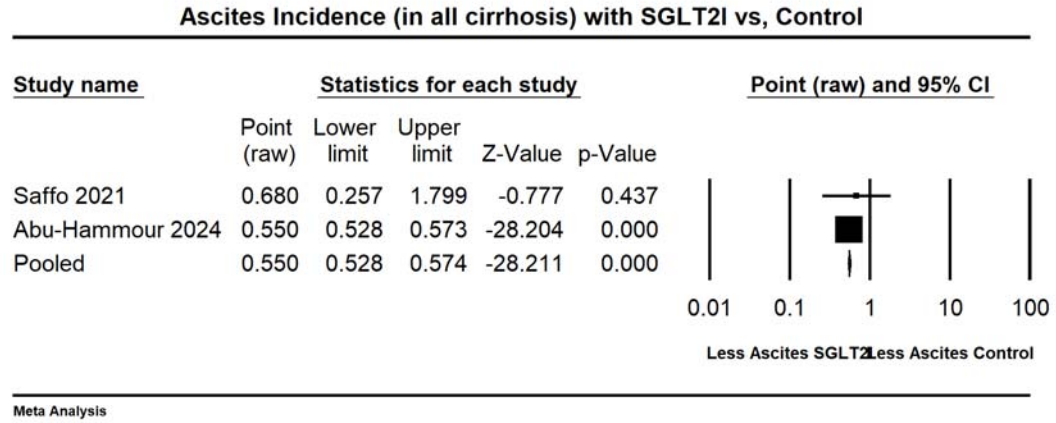


Table 1. Characteristics for studies assessing SGLT2I as an intervention in liver cirrhosis

Author, Year	Publication Type	Study Design	Data Source	Controlled or Propensity Matched Variables	Sample Size (Experimental/Control)	SGLT2I Studied	Control Group	Population with Decompensate Cirrhosis (%)	NASH Cirrhosis %	Study Time Period (weeks)	Efficacy Outcomes	Safety Outcomes
Saffo, 2020	M	Single Arm Retrospective	Tertiary Center Chart Review	NA	78	EMPA (42%) CANA (22%) DAPA (17%) Mixed (19%)	NA	19	50	26	Mortality Ascites Management Decompensations	Mycotic Genital Infections
Saffo, 2021	M	Retrospective	Large Database (VOCAL)	Age, Gender, MELDNa, FIB4, EV, CAD, HbA1c Medications	846 (423, 423)	Multiple	DPP4I	0	47	70	Mortality Ascites Management	NA
Goel, 2023	CA	Single-Arm Prospective Trial	Single Center, USA	NA	8	EMPA 10 mg	NA	100	64	12	Ascites Management Drug Concentration	NA
Huynh, 2023	M	Retrospective	Large Database	Age, Sex, Race, Ethnicity, FIB-4, MELD-NA, CAD, HCC, BMI, HbA1c, Varices, Cirrhosis etiology, medications.	2806 (1403, 1403)	EMPA (61%) CANA (28%) DAPA (11%)	Metformin	0	100	260	Mortality Decompensations Cancer Prevention	NA
Sharma 2023	M	Single Arm Prospective	Single Center India	NA	20	DAPA (55%) EMPA (30%) REMO (15%)	NA	0	85	6	Liver Enzymes Liver Function Tests Fibroscan (kPa) Weight	MAP UTI
Bakosh, 2024	M	RCT	Single Center Egypt	Age, Sex, Diabetes, Weight, Cirrhosis Etiology, MELD-Na, CP	42 (21, 21)	EMPA 10 mg	Furosemide and Spironolactone	100	50	12	Ascites Management	GI Disorders Renal Disorders Hemodynamic Outcomes UTI
Kalambokis, 2024	M	Single Arm Prospective Trial	Single Center Greece	NA	14	EMPA 10 mg	NA	100	0	12	Ascites Management Natriuresis Hemodynamic Outcomes	Renal Disorders
Shen, 2024	M	Single Arm Prospective Trial	Single Center, Australia	NA	10	EMPA 10 mg	NA	50	10	6	Drug Concentration Natriuresis	GI Disorders Renal Disorders
Singh, 2024	M	RCT	Single Center India	Age, Sex, Cirrhosis etiology, Liver function labs, Ascites grade	40 (20, 20)	DAPA 10 mg	Furosemide and Spironolactone	100	20	26	Mortality Ascites Management Natriuresis Liver Function Scores Diuretic Dose Adjustment	Renal Disorders Hemodynamic Outcomes UTI
Abu-Hammour, 2024	CA	Retrospective	Large Database (TriNetX)	Performed, not specified.	9862 (4932, 4932)	Unspecified SGLT2Is	Furosemide and Spironolactone	100	NR	28	Mortality Ascites Management Variceal Bleeding HRS	Renal Disorders Hospitalizations

M=Manuscript, CA=Conference Abstract, TriNetX=Global Health Research Network that provides a web-based platform for analyzing real-world data, NA=Not applicable, NR=Not Reported, VOCAL=EMPA=Empagliflozin, CANA=Canagliflozin, DAPA=Dapagliflozin, Mixed=All. DPP4I=Dipeptidyl peptidase IV Inhibitor, VOCAL= Veterans Outcomes and Costs Associated with Liver Disease cohort is an established time-updating dataset derived from Veteran Affairs (VA) Corporate Data Warehouse previously established in studying cirrhosis⁶⁴, MELD-Na=Model for End-Stage Liver Disease-Sodium, HbA1c-Hemoglobin A1C, FIB4=Fibrosis-4 Index for Liver Fibrosis, EV=Esophageal Varices., CAD-Coronary Artery Disease, HCC-Hepatocellular Carcinoma, CP=Child Pugh, kPA=Kilopascals, unit of stress for liver fibrosis, MAP=Mean Arterial Pressure, UTI-Urinary Tract Infection, HRS=Hepatorenal Syndrome

Table 2A: Outcomes in Prospective Trials

Author, Year	Intervention	Residual Ascites	Need for LVP	Acute Kidney Injury	Hyponatremia	Hepatic Encephalopathy	Urinary Tract Infections	Diuretic Dose Reduction (mg)	Weight Reduction (kg) and 95% CI
	Control (if applicable)								
Goel, 2023	Empagliflozin	NR	NR	0/8	NR	0/8	NR	20	-16.7 (+4.2, -37.6)
Sharma 2023	SGLT2I	NR	NR	NR	NR	NR	NR	NR	-3.8 (+1.83,-8.63)
Bakosh, 2024	Empagliflozin plus MRA+ Furosemide	16/21	9/21	7/21	9/21	9/21	7/21	NR	-7.0 (-3.6, -10.4)
	MRA+ Furosemide	21/21	21/21	12/21	2/21	6/21	2/21	NR	NA
Kalambokis, 2024	Empagliflozin	7/14	0/14	0/14	NR	NR	0/14	140±9 to 77±11	-7.2 (-2.8, -11.5)
Shen, 2024 (Decompensated)	Empagliflozin	NR	NR	NR	NR	NR	0/5	NR	NR
Singh, 2024	Dapagliflozin plus MRA+ Torsemide	17/20	7/20	10/20	5/20	2/20	11/20	9.4 ± 1.9 (188+/-38) to 6.1 ± 4.3 (122+/-86)	NR
	MRA+ Torsemide	20/20	15/20	3/20	3/20	1/10	4/20	9.2 ± 17 mg to 9 ± 2.5 mg	NR

Table 2B: Outcomes for Retrospective Studies

Retrospective Studies

Author, Year	Intervention	Mortality (Incidence %) or Adjusted Hazard Ratios (CIs)	Decompensation (Incidence %) or Adjusted Hazard Ratios (CIs)	Ascites (Incidence %) or Adjusted Hazard Ratios (CIs)	Varices (Incidence %) or Adjusted Hazard Ratios (CIs)
	Control (if applicable)				
Saffo 2020	SGLT2I	8.97%	10.25%	16.67%	1.28%
Saffo 2021	SGLT2I	0.33 (0.11-0.99)	NR	0.68 (0.37-1.25)	NR
	DPP4I				
Hyunh 2023	SGLT2I	0.57 (0.41-0.81)	0.63 (0.43-0.93)	NR	NR
	Metformin				
Abu-Hammour, 2024	SGLT2I plus MRA+ Loop diuretics	0.43 (0.40-0.47)	0.64 (0.61-0.67)*	0.55 (0.52-0.59)	0.78 (0.73-0.84)

Supplementary Table 1: Search Strategy Constructed in Embase Translated to Other Databases

Keyword search terms:
gliflozin* OR gliflozin-derivative* OR SGLT2-inhibitor* OR sodium-dependent-glucose-cotransporter-2-inhibitor* OR sodium-glucose-co-transporter-2-inhibitor* OR sodium-glucose-transporter-2-inhibitors* OR sodium-glucose-cotransporter-2-inhibitor* OR SGLT-2-inhibit* OR SGLT2i OR SGLT2is OR SGLT2-I OR atigliflozin OR bexagliflozin OR canagliflozin OR dapagliflozin OR empagliflozin OR enavogliflozin OR ertugliflozin OR ipragliflozin OR licogliflozin OR luseogliflozin OR mizagliflozin OR remogliflozin OR sergliflozin OR sotagliflozin OR tofogliflozin
cirrhosis OR alcohol*-liver* OR decompensated-liver* OR hepatic-decompensat* OR liver-decompensat*
Embase.com Searches (with Emtree Search headings). Do not use subheadings unless you intend to exclude Conference Abstracts 'sodium glucose cotransporter 2 inhibitor'/syn 'liver cirrhosis'/syn NOT (('fatty liver'/exp/mj OR NAFLD:ti OR MAFLD:ti OR MASLD:ti OR fatty-liver:ti) NOT ('liver cirrhosis'/exp/mj NOT cirrhos*:ti)) NOT ([animals]/lim NOT [humans]/lim) NOT ('conference review'/it OR 'editorial'/it OR 'letter'/it OR 'note'/it OR 'review'/it OR 'short survey'/it OR 'tombstone'/it OR 'case report'/de OR 'meta analysis'/de OR 'meta analysis topic'/de OR 'systematic review'/de OR 'systematic review topic'/de)
MEDLINE in PubMed (with MeSH headings). Use OVID MEDLINE if you are using proximity operators. "Liver Cirrhosis"[Mesh] NOT (("Fatty Liver"[Majr] OR NAFLD[ti] OR MAFLD[ti] OR MASLD[ti] OR fatty-liver[ti]) NOT ("Liver Cirrhosis"[Majr] OR cirrhos*[ti])) "Sodium-Glucose Transporter 2 Inhibitors"[Mesh] OR "Sodium-Glucose Transporter 2 Inhibitors" [Pharmacological Action] NOT ("animals"[mesh] NOT "humans"[mesh]) NOT ("case reports"[Publication Type] OR "comment"[Publication Type] OR "editorial"[Publication Type] OR "guideline"[Publication Type] OR "introductory journal article"[Publication Type] OR "meta analysis"[Publication Type] OR "news"[Publication Type] OR "retracted publication"[Publication Type] OR "review"[Publication Type] OR "systematic review"[Publication Type])
Cochrane Central Register of Controlled Trials . Use MEDLINE search but "Term"[MeSH] > [mh "Term"]. Limit to "Trials", so results are automatically limited to Controlled Trial studies and Trial Registries, so no need for publication type limits.
Keywords for Global Index Medicus – remove truncation from keywords. Use "" around phrases.

Supplementary Table 2:

Database	Results	Platform
Embase	167	Embase.com (Elsevier)
MEDLINE	58	PubMed (NCBI, National Libraries of Medicine)
Cochrane Central Register of Controlled Trials	36	Cochrane Library (Wiley)
Web of Science Core Collection	95	Web of Science (Clarivate)
Total	356	
with duplicates removed	255	

Supplementary Table 3A: Quality Assessment of Included Studies Using Cochrane RoB 2.0 Tool, NIH , and Newcastle-Ottawa Scale for Retrospective Studies

ROB 2.0	Randomization	Comments	Intended Intervention	Comments	Outcome Data	Comments	Measurement of Outcomes	Comments	Reported Results	Comments	Overall	Notes
Bokosh 2024	Low	Block randomization, also no difference in baseline characteristics	Low	Assessor -blinded, no missed doses	Low	Primary outcome reflects aim	Low Risk	Assessor-blind, objective data	Low Risk	No outcome data omitted	Low Risk	Block randomization (SNOSE), No difference in baseline characteristics, assessor-blinded, outcomes reflect aim, no outcome data omitted.
Singh 2024	Low	Double-blind, randomized, placebo-controlled trial. Randomization was done using a computer-generated random number trial	Low	Allocation concealment was done using the serially numbered opaque sealed envelopes (SNOSE) method	Low	Primary outcome reflects aim	Low Risk	Clinicians were blinded to group assignments. Key outcomes were objective measures. Patients were monitored frequently.	Unclear risk	12 of the 40 patients (30%) died before trial completed	Low Risk	Double blind, randomized, placebo-controlled. Study followed timeline submitted to clinicaltrials.gov . Reported both positive and negative findings

Supplementary Table 3B: Quality Assessment of Included Studies using National Institutes of Health (NIH) Quality Assessment Tool for Observational Studies and Cross-Sectional Studies.

NIH Tool	1. Was the research question or objective in this paper clearly stated? -	2. Was the study population clearly specified and defined? -	3. Was the participation rate of eligible persons at least 50%?	4. Were all the subjects selected or recruited from the same or similar populations (including the same time period)? Were inclusion and exclusion criteria for being in the study prespecified and applied uniformly to all participants? -	5. Was a sample size justification, power description, or variance and effect estimates provided?	6. For the analyses in this paper, were the exposure(s) of interest measured prior to the outcome(s) being measured?	7. Was the timeframe sufficient so that one could reasonably expect to see an association between exposure and outcome if it existed?	8. For exposures that can vary in amount or level, did the study examine different levels of the exposure as related to the outcome (e.g., categories of exposure, or exposure measured as continuous variable)?	9. Were the exposure measures (independent variables) clearly defined, valid, reliable, and implemented consistently across all study participants?	10. Was the exposure(s) assessed more than once over time?	11. Were the outcome measures (dependent variables) clearly defined, valid, reliable, and implemented consistently across all study participants? -	12. Were the outcome assessors blinded to the exposure status of participants?	13. Was loss to follow-up after baseline 20% or less?	14. Were key potential confounding variables measured and adjusted statistically for their impact on the relationship between exposure(s) and outcome(s)?
Goel 2023 (abstract)	Yes	Yes	-Yes (14/18)	Yes, participants recruited from a single center (Stanford) during a specific time period with consistent inclusion/exclusion criteria	No. Sample size justifications or power calculations were not included. However, this is a pilot study	Yes	? Yes - 12 week timeframe	No - all patients received a single dose of empagliflozin 10mg daily	Yes - the exposure (10 mg empagliflozin) was clearly defined and consistent	No - the exposure remained constant at 10mg daily	Yes	Unclear	No - loss to follow up was 43%. 6 of 14 participants did not finish.	No
Kalambokis 2024	Yes	Yes	Unclear - 14 patients were enrolled in the study from consecutive cases, however it is not clear if any eligible patients did not participate	Yes, patients came from same clinic (Greece) in same timeframe	No, however this is a pilot study	Yes	Yes, follow up period averaged 18.3 months	No, all patients received same dose of empagliflozin (10 mg daily)	Yes	No, it remained constant	Yes	No, no mention of blinding	Yes,	No
Shen 2024	Yes	Yes	Unclear. The paper does not specify how many patients were initially screened or deemed eligible.	Yes, patients came from same clinic (Sydney). Inclusion/exclusion criteria were consistently applied	Yes, "Cohort size was determined to primarily assess safety, ... rather than to undertake a power calculation"	Yes	Unclear; it was short - 4 weeks with 2 weeks of follow up, and the authors state a longer study should be conducted	No, all patients received same dose of empagliflozin (10 mg)	Yes	No, it remained constant	Partially. The primary outcome measures were safety and pharmacokinetic parameters, which were consistently implemented, but the reliability of these measurements is not detailed	No, this was open label	Yes, 10/12 completed	No
Sharma 2023	Yes	Yes	Yes (20/24 eligible persons)	Yes, patients came from same clinic (India). Inclusion/exclusion criteria were consistently applied	No. No sample size justification or power calculation	Yes	Yes, six month follow up period	Yes, the study included patients on different SGLT2 inhibitors.	Yes	Dosing schedule not specified	Yes. Outcomes like liver function, glycemic control, and adverse events were recorded	No, there was no blinding	Yes, all 20 patients completed follow up	No

Supplementary Table 3C:

Newcastle-Ottawa	Selection	Notes	Comparability	Notes	Outcome	Notes	Overall
Saffo 2020	3/4	No non-exposed patients were included. All patients used SGLT2 inhibitors	NA		3/3	The study ensured subjects were followed long enough to capture AEs. Only a small percentage of patients (4/78) died and did not complete the study.	7/7 stars
Saffo 2021	4/4	Large established VA cohort, non-exposed group drawn from same population, electronic records used, outcome of interest (ascites) was not present at study beginning	2/2	propensity score-matched patient design with MELD score included accounting for liver disease severity as well as comorbidities and other medications.	2/3	Outcomes were determined by objective ICD-10 codes, but they lack granularity/specificity, follow up for 36 months, no patients were lost to follow up	8/9 stars
Hyunh 2023	4/4	Patients pulled from large TriNetX research network. The non-exposed cohort (monotherapy group) was from the same population. Medical records were used to be sure of exposure. Patients with preexisting outcomes at baseline were excluded	2/2	propensity score-matched patient design with MELD score included accounting for liver disease severity	2/3	Outcomes were determined by objective ICD-10 codes, but they lack granularity/specificity. An adequate follow up timeline was used (5 years). Retrospective chart review, so no lost to follow up	7/9 stars
Abu-Hammour 2024 (abstract)	4/4	Patients pulled from large TriNetX research network. The non-exposed cohort (monotherapy group) was from the same population. Medical records were used to be sure of exposure. Patients with preexisting outcomes at baseline were excluded	2/2	propensity score-matched patient design with MELD score included accounting for liver disease severity	1/3	Outcomes were determined by objective ICD-10 code, but they lack granularity/specificity. An inadequate follow up timeline was used (180 days). Retrospective chart review, no loss to follow up	6/9 stars

Supplementary Table 4:

Section and Topic	Item #	Checklist item	Location where item is reported
TITLE			
Title	1	Identify the report as a systematic review.	1-2
ABSTRACT			
Abstract	2	See the PRISMA 2020 for Abstracts checklist.	3
INTRODUCTION			
Rationale	3	Describe the rationale for the review in the context of existing knowledge.	4-5
Objectives	4	Provide an explicit statement of the objective(s) or question(s) the review addresses.	4-5
METHODS			
Eligibility criteria	5	Specify the inclusion and exclusion criteria for the review and how studies were grouped for the syntheses.	6
Information sources	6	Specify all databases, registers, websites, organisations, reference lists and other sources searched or consulted to identify studies. Specify the date when each source was last searched or consulted.	6
Search strategy	7	Present the full search strategies for all databases, registers and websites, including any filters and limits used.	6, Supplementary Table 1-2
Selection process	8	Specify the methods used to decide whether a study met the inclusion criteria of the review, including how many reviewers screened each record and each report retrieved, whether they worked independently, and if applicable, details of automation tools used in the process.	6
Data collection process	9	Specify the methods used to collect data from reports, including how many reviewers collected data from each report, whether they worked independently, any processes for obtaining or confirming data from study investigators, and if applicable, details of automation tools used in the process.	7
Data items	10a	List and define all outcomes for which data were sought. Specify whether all results that were compatible with each outcome domain in each study were sought (e.g. for all measures, time points, analyses), and if not, the methods used to decide which results to collect.	7
	10b	List and define all other variables for which data were sought (e.g. participant and intervention characteristics, funding sources). Describe any assumptions made about any missing or unclear information.	NA
Study risk of bias assessment	11	Specify the methods used to assess risk of bias in the included studies, including details of the tool(s) used, how many reviewers assessed each study and whether they worked independently, and if applicable, details of automation tools used in the process.	8-9
Effect measures	12	Specify for each outcome the effect measure(s) (e.g. risk ratio, mean difference) used in the synthesis or presentation of results.	8-9
Synthesis methods	13a	Describe the processes used to decide which studies were eligible for each synthesis (e.g. tabulating the study intervention characteristics and comparing against the planned groups for each synthesis (item #5)).	7-8
	13b	Describe any methods required to prepare the data for presentation or synthesis, such as handling of missing summary statistics, or data conversions.	7-8
	13c	Describe any methods used to tabulate or visually display results of individual studies and syntheses.	8-9
	13d	Describe any methods used to synthesize results and provide a rationale for the choice(s). If meta-analysis was performed, describe the model(s), method(s) to identify the presence and extent of statistical heterogeneity, and software package(s) used.	8-9
	13e	Describe any methods used to explore possible causes of heterogeneity among study results (e.g. subgroup analysis, meta-regression).	8-9
	13f	Describe any sensitivity analyses conducted to assess robustness of the synthesized results.	NA
Reporting bias assessment	14	Describe any methods used to assess risk of bias due to missing results in a synthesis (arising from reporting biases).	9
Certainty assessment	15	Describe any methods used to assess certainty (or confidence) in the body of evidence for an outcome.	8-9
RESULTS			
Study selection	16a	Describe the results of the search and selection process, from the number of records identified in the search to the number of studies included	9

Section and Topic	Item #	Checklist item	Location where item is reported
		in the review, ideally using a flow diagram.	Figure 1
	16b	Cite studies that might appear to meet the inclusion criteria, but which were excluded, and explain why they were excluded.	9
Study characteristics	17	Cite each included study and present its characteristics.	9 Table 1
Risk of bias in studies	18	Present assessments of risk of bias for each included study.	10 Supplementary Table 3
Results of individual studies	19	For all outcomes, present, for each study: (a) summary statistics for each group (where appropriate) and (b) an effect estimate and its precision (e.g. confidence/credible interval), ideally using structured tables or plots.	9-10
Results of syntheses	20a	For each synthesis, briefly summarise the characteristics and risk of bias among contributing studies.	Table 1 Supplementary Table 3
	20b	Present results of all statistical syntheses conducted. If meta-analysis was done, present for each the summary estimate and its precision (e.g. confidence/credible interval) and measures of statistical heterogeneity. If comparing groups, describe the direction of the effect.	9-10 Figure 2-4
	20c	Present results of all investigations of possible causes of heterogeneity among study results.	9-10 Table 1
	20d	Present results of all sensitivity analyses conducted to assess the robustness of the synthesized results.	NA
Reporting biases	21	Present assessments of risk of bias due to missing results (arising from reporting biases) for each synthesis assessed.	NA given limited studies
Certainty of evidence	22	Present assessments of certainty (or confidence) in the body of evidence for each outcome assessed.	9-16
DISCUSSION			
Discussion	23a	Provide a general interpretation of the results in the context of other evidence.	10
	23b	Discuss any limitations of the evidence included in the review.	17-18
	23c	Discuss any limitations of the review processes used.	17-18
	23d	Discuss implications of the results for practice, policy, and future research.	1; 11-18
OTHER INFORMATION			
Registration and protocol	24a	Provide registration information for the review, including register name and registration number, or state that the review was not registered.	1
	24b	Indicate where the review protocol can be accessed, or state that a protocol was not prepared.	1
	24c	Describe and explain any amendments to information provided at registration or in the protocol.	1
Support	25	Describe sources of financial or non-financial support for the review, and the role of the funders or sponsors in the review.	1
Competing interests	26	Declare any competing interests of review authors.	1
Availability of data, code and other materials	27	Report which of the following are publicly available and where they can be found: template data collection forms; data extracted from included studies; data used for all analyses; analytic code; any other materials used in the review.	1