

Umbilical cord blood pTau217 and BD-tau are associated with markers of neonatal hypoxia: a prospective cohort study

Emma Payne,¹ Fernando Gonzalez-Ortiz,^{2,3} Kaitlin Kramer,^{4,5} Thomas Payne,^{4,5} Shreeya Marathe,⁵ Neha Mahajan,⁵ Ashly Liu,⁵ Jessica Barry,⁵ Andrew Duckworth,⁵ Mitchell Brookes,⁵ Bradley de Vries,^{6,7} Benjamin Moran,^{8,9} Helen Manning,¹⁰ Kaj Blennow,^{2,3} Henrik Zetterberg^{11,12} David Zalcberg,^{4,5} Robert D. Sanders^{4,5}

Author affiliations:

1. St George Hospital, South Eastern Sydney Local Health District, New South Wales, Australia
2. Department of Psychiatry and Neurochemistry, Institute of Neuroscience and Physiology, the Sahlgrenska Academy at the University of Gothenburg, Mölndal, Sweden
3. Clinical Neurochemistry Laboratory, Sahlgrenska University Hospital, Mölndal, Sweden
4. Central Clinical School, Faculty of Medicine and Health, The University of Sydney, New South Wales, Australia
5. Department of Anaesthetics, Royal Prince Alfred Hospital, Sydney Local Health District, New South Wales, Australia
6. Sydney Institute for Women, Children and their Babies, Sydney Local Health District, New South Wales, Australia

7. NHMRC Clinical Trials Centre, The University of Sydney, New South Wales, Australia
8. Critical Care Program, The George Institute of Global Health, Sydney, Australia.
9. Department of Intensive Care, Gosford Hospital, Gosford, Australia.
10. Department of Obstetrics and Gynaecology, Central coast local health district, NSW
11. Department of Psychiatry and Neurochemistry, Institute of Neuroscience and Physiology, the Sahlgrenska Academy at the University of Gothenburg, Mölndal, Sweden
12. Clinical Neurochemistry Laboratory, Sahlgrenska University Hospital, Mölndal, Sweden

* Corresponding authors: Emma Payne, David Zalcborg

email: emmapayne4114@gmail.com

address: St George Hospital, Gray St, Kogarah, NSW, 2217

phone: +61449554114

Running title: Umbilical pTau217, BD-tau Linked to Neonatal Hypoxia Markers

Abstract

Objective: Current methods for early detection of hypoxic–ischemic encephalopathy (HIE) are limited by lack of specificity, cost, and time constraints. Blood tau protein concentrations reflect neuropathology in adults. This study examines tau as a potential HIE biomarker in neonates by relating cord blood levels to short-term fetomaternal outcomes.

Design: Prospective cohort study.

Setting: Royal Prince Alfred Hospital—a large Australian tertiary referral centre.

Population: 107 maternal participants.

Methods: Simoa analysis of umbilical cord blood pTau217 and brain-derived (BD)-tau.

Main Outcome Measures: Primary: association of BD-tau with non-reassuring fetal status. Secondary: 1) correlations between cord blood tau and other biomarkers; 2) associations between tau levels and risk factors for fetomaternal morbidity; 3) associations between tau levels and short-term fetomaternal outcome.

Results: Of 509 deliveries, cord blood was analysed in 107/110 recruited maternal participants. BD-tau correlated with non-reassuring fetal status (OR=3.0;95%CI=1.6–5.7;p=0.001), though not when adjusting for mode of delivery and gestational age. BD-tau was higher in vaginal deliveries, and positively associated with pTau217, NfL, and lactate (p<0.001), and negatively associated with pH and base excess. pTau217 was higher in preterm neonates and was associated with neurofilament light chain (Spearman’s rho=0.44,p<0.001). BD-tau and pTau217 were associated with maternal hypertension and placental abnormalities.

Conclusions: Cord blood BD-tau correlates with markers of fetal hypoxia, whilst pTau217 levels may indicate broader neurodevelopmental vulnerability. Further studies could explore whether these findings translate to clinical use of tau as an HIE biomarker.

Funding: US National Institutes of Health (grant:R01AG063849-01).

Keywords: tau; asphyxia; hypoxic–ischemic encephalopathy; HIE.

Introduction

Hypoxic–ischemic encephalopathy (HIE)—a subtype of neonatal encephalopathy—is a syndrome of central nervous system dysfunction caused by abnormalities in cerebral blood flow and impaired gas exchange perinatally, resulting in multiple organ failure.^{1–4} Approximately 40–60% of affected infants will experience mortality or severe neurodevelopmental disability by two years of age.⁵ 20/12/2024 19:15:00

Risk factors for HIE can broadly be categorised into antepartum (including baseline fetal and maternal characteristics) and intrapartum factors. Understanding of antepartum risk factors can complement intrapartum monitoring techniques to direct decision-making regarding urgency of delivery. Current intrapartum monitoring—including fetal heart rate monitoring and fetal scalp blood sampling—is limited by lack of specificity for pathological neurological damage, measurement difficulties, and lack of inter-user reliability.^{6,7}

Post-delivery, diagnosis of HIE is based on clinical signs, using scoring systems such as Sarnat grading,⁷ electrophysiological monitoring, and neuroimaging studies including MRI and cranial ultrasound.^{6,8,9} These tools are limited by time and cost constraints, require expert interpretation, and may be difficult to access in emergency situations.^{6,8–10} These limitations limit diagnostic sensitivity, especially for milder forms of HIE, and can severely impede access to treatment of HIE—therapeutic hypothermia (TH).^{11–15} This indicates an ongoing need for objective, cost-effective, and rapid measures of identifying HIE in order to appropriately identify subgroups of HIE patients that could benefit from early intervention.

Real-time physiological biomarkers could address this gap in diagnosis and prognostication by providing objective point-of-care testing. Current cord or whole blood markers such as pH, lactate, and base excess remain non-specific for neurological injury.^{11,12} Tau is a promising biomarker of poor neurological outcome in adult cohorts with acute and chronic neurological disease.^{16–22} Studies of tau in neonates has, to date, focused on correlation of total blood tau and cerebral injury-related outcome measures. However, compared to total blood tau, specific tau subtypes—in particular pTau217 and ‘brain-derived tau’ (BD-tau)—have demonstrated greater specificity for adult neurological injury.^{21–28} This is the first study to examine tau subtypes in a neonatal cohort.

Given the paucity of evidence addressing tau subtypes and fetomaternal outcome, we conducted a prospective cohort study with the following aims:

1. Address feasibility of neonatal cord blood tau level measurement in an Australian cohort.
2. Assess the correlation between BD-tau and non-reassuring fetal status.
3. Assess correlations between cord blood tau—BD-tau, pTau217—and other cord blood biomarkers, maternal and neonatal risk factors for encephalopathy, and adverse outcome.

Methods

Study Population and Design

We performed a prospective cohort study of maternal and neonatal patients at the Royal Prince Alfred Hospital (RPAH), a tertiary referral centre in Sydney, Australia. Maternal participants of any age who birthed at RPAH were eligible for study recruitment, as well as all modes of delivery including all live and stillbirths delivered vaginally or via Caesarean section. Recruitment occurred prospectively from October 2022 at any time from 4 weeks prior to estimated date of delivery to the immediate post-partum period (with the option of retrospective consent). Trained recruiters obtained written, informed consent in English for all maternal participants in antenatal visits or on the birthing unit. Maternal participants were excluded if they were non-English speaking (could not provide consent after appropriate counselling in English) or had a history of psychological illness or other conditions that may interfere with capacity to provide informed consent.

Recruitment was undertaken as part of the BABBies (Benefits of Analysing Brain Biomarkers in perinatal care) Study—a prospective observational cohort study exploring the biomarkers neurofilament light chain (NFL), BD-tau, and pTau217. Data were stored in Sydney Local Health District (SLHD) REDCap electronic database. Ethics approval was obtained from SLHD Research and Ethics Committee (RPAH zone) (approval number: 2022/ETH01100). Our study was performed according to the National Statement on Ethical Conduct in Human Research (2007)²⁹ and the CPMP/ICH Note for Guidance on Good Clinical Practice.³⁰ Data reporting

adhered to Strengthening the Reporting of Observational Studies in Epidemiology (STROBE) guidelines.³¹

Cord Blood Collection and Analysis

Umbilical venous cord blood was collected by the attending midwife in the immediate postpartum period, either on the birthing unit or in operating theatres. 1–3mL samples were collected and centrifuged in the RPAH Department of Anaesthetics laboratory, and plasma samples were then stored in deidentified cryovials.

All the tau markers were measured on the Simoa HD-X platform with two-fold dilution factor in plasma. Plasma pTau217 and BD-tau were measured with previously validated assays.^{25,27} Signal variations within and between analytical runs were assessed using three internal quality control samples at the beginning and the end of each run.

Outcome Data Collection

RPAH electronic and paper medical records of maternal and neonatal participants were used to obtain demographic and outcome data, including baseline characteristics, antenatal history, intrapartum monitoring, and adverse antenatal, intrapartum, and postpartum events. Mode of delivery was classified categorically: vaginal delivery, emergency caesarean section, and elective caesarean section. Placental abnormalities were defined as any abnormality detected on placental ultrasound, on examination in the birth unit or in the operating theatre, or histopathology. The composite term ‘histopathological placental abnormality’ refers to only abnormalities detected on anatomical or histopathological examination following placental delivery as per the 2014 Amsterdam Working Group

nosology for classification of placental clinicopathological disorders.³² ‘Non-reassuring fetal status’ was defined as fetal blood sampling showing a pH ≤ 7.20 or lactate > 4.7 ,³³⁻³⁵ or intrapartum cardiotocography (CTG) changes identified as ‘red zone’ criteria according to NSW Health electronic fetal monitoring guidelines.³⁶ Our definition of non-reassuring fetal status did not include participants incidentally found to have abnormal umbilical cord blood values without meeting other criteria for non-reassuring fetal status.

Outcomes

Our primary outcome was the association of BD-tau with non-reassuring fetal status. We adjusted this analysis for gestational age and mode of delivery, given these variables have previously been associated with both non-reassuring fetal status and cord blood concentrations of other biomarkers of acidosis and anaerobic metabolism.^{13,34} Secondary outcomes included the association of BD-tau and pTau217 with antenatal factors (gestational age, head circumference, birthweight), other cord blood biomarkers, maternal factors, delivery factors, and perinatal outcome. Resuscitation at birth was defined as cardiorespiratory support required following drying, warming, and mechanical stimulation.³⁷

Power Analysis

Our power analysis was based on the association of NfL with non-reassuring fetal status, which is reported separately.³⁸ We used the previously reported baseline incidence of non-reassuring fetal status of 16%.³⁴ Based on a two-sided t-test with $\alpha = 0.025$, a sample size of 110 participants provides 80% power to detect a Cohen’s d of 0.8 (i.e., a large effect size). The power analysis would also apply for the primary outcome of this study, with a preserved

type 1 error rate of $\alpha = 0.05$, as this value was halved a priori for the power calculation to account for additional analysis.

Statistical Methods

Primary outcome

Both BD-tau and pTau217 concentrations showed a strong positive skew, hence were \log_{10} -transformed for all analyses. To determine the association of BD-tau with non-reassuring fetal status after adjusting for other variables, we used logistic regression (binomial family with logit link) with maximum likelihood estimation of the model parameters. The parametric G-formula was used to compute the mean risk difference from logistic regression models.³⁹ We included a BD-tau*mode of delivery interaction in our model, as the relationship between neuronal biomarkers and fetal outcome would likely vary by birth route. To provide interpretable effect measures, we calculated the risk difference for the outcome per increase in BD-tau by its interquartile range (Q3 – Q1). The relative association of cord biomarkers with non-reassuring fetal status was quantified using the area under the receiver operator curve (AUROC). The 95% confidence interval for the AUROC was calculated using 2000 stratified bootstrap replicates.

Secondary outcomes

Bivariate biomarker correlations were assessed using rank-based nonparametric methods. The relative strength of biomarker correlations was tested using the method described by Meng, Rosenthal, and Rubin.⁴⁰ For continuous secondary outcomes, we used linear regression with the ordinary least squares estimator for the model parameters. Associations between biomarker concentrations and placental abnormalities were adjusted for low birth

weight (defined as birth weight <2.5kg, per World Health Organisation definition).⁴¹ Binary secondary outcomes were tested for linearity, and analysed in the same fashion as our primary outcome.

We used a p-value <0.05 to denote statistical significance. No adjustments for multiple comparisons were made in this preliminary study. All analyses were conducted in R using RStudio (Version 2024.04.0; R Foundation for Statistical Computing, Vienna, Austria). The 'stats' package was used for linear and generalised linear models. The 'cocor' package was used to compare the strength of bivariate biomarker concentrations.⁴² The 'plotROC' and 'pROC' packages were used for calculation and plotting of the AUROC.^{43–45}

Results

Over the study period 24th October 2022 to 9th December 2022, 110 maternal study participants were recruited from a total of 509 deliveries at RPAH. Cord blood was sent for a total of 108 participants, of which 107 had either BD-tau or pTau217 levels available; 105 had BD-tau values and 106 had pTau217 values (STROBE diagram: Figure S1). Cohort demographic information is summarised in Table S1.

Primary outcome

Increased BD-tau was associated with a higher risk of non-reassuring fetal status; each IQR increase in BD-tau was associated with an increased odds of fetal distress (OR = 3.0; 95% CI:

1.6, 5.7; $p = 0.001$). However, this relationship was no longer observed when adjusting for mode of delivery and gestational age (OR = 1.1; 95%CI = 0.6, 1.2; $p = 0.667$) (Table S2). BD-tau was not associated with non-reassuring fetal status when stratifying within each individual mode of delivery (Table S2). Comparative performances of BD-tau pH, lactate, and base excess in predicting non-reassuring fetal status are displayed in Figure 1. There was no association demonstrated between pTau217 and non-reassuring fetal status (Wilcoxon $p = 0.62$).

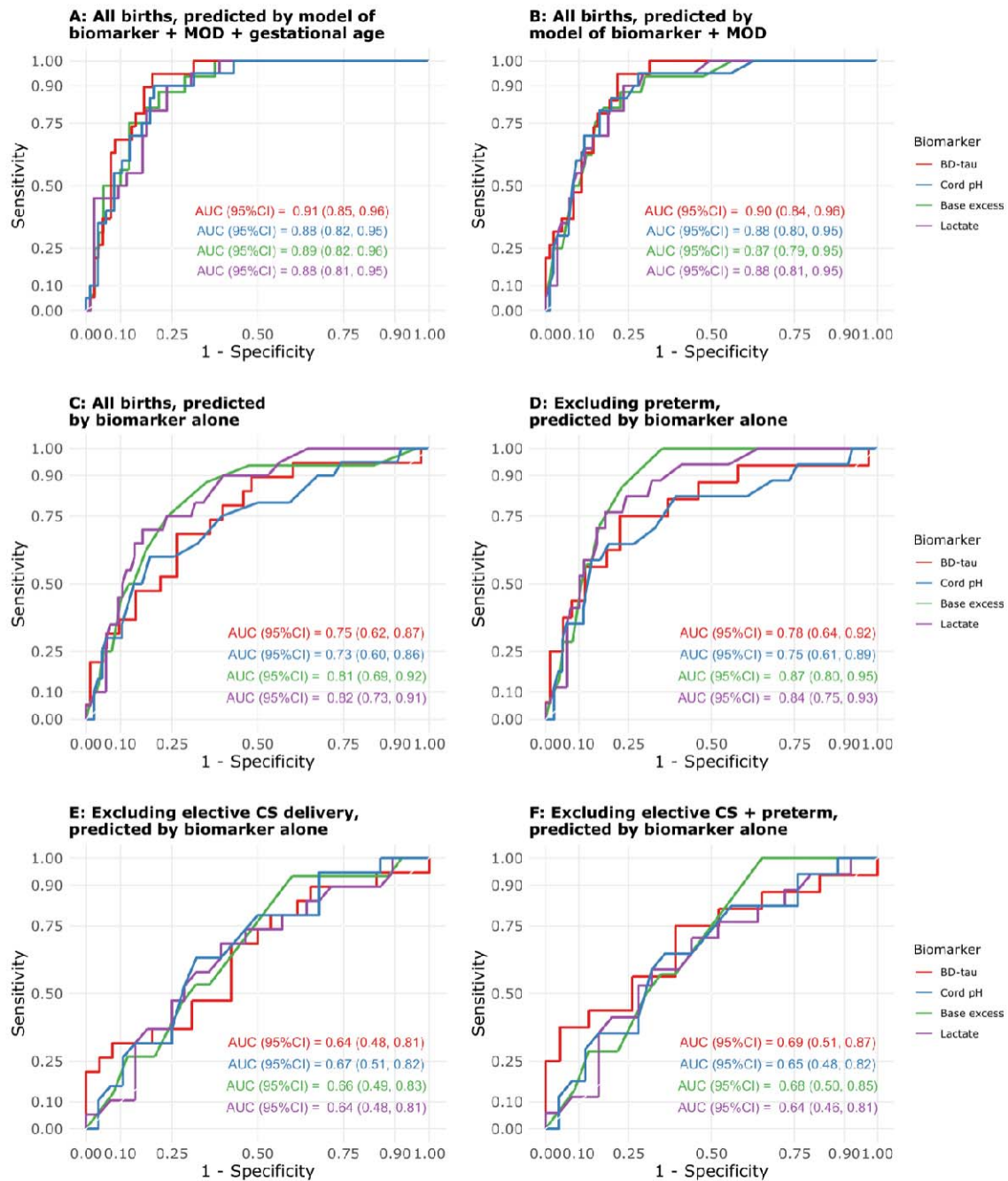


Figure 1:

Receiver-operator curve (ROC) analysis of BD-tau, pH, base excess, and lactate in predicting binary non-reassuring fetal status. (A) ROC for the generalised linear model predicting non-reassuring fetal status and including the regressors: biomarker, mode of delivery, and gestational age. (B) ROC for the generalised linear model predicting non-reassuring fetal

status and including the regressors: biomarker and mode of delivery. ROC for the biomarkers only, including (C) all births, (D) excluding preterm births, (E) excluding elective caesarean section, and (F) excluding elective CS and preterm birth.

Secondary outcomes

Antenatal Factors

Relationship between tau and fetal factors

pTau217 was negatively associated with gestational age (Spearman's rho = -0.25, p = 0.0096). pTau217 was also negatively associated with birthweight (Spearman's rho = -0.23, p = 0.019) and head circumference (Spearman's rho = -0.24, p = 0.016), however, these associations were not significant when controlling for gestational age (Table S3). BD-tau did not demonstrate evidence of association with fetal parameters (Figure 2).

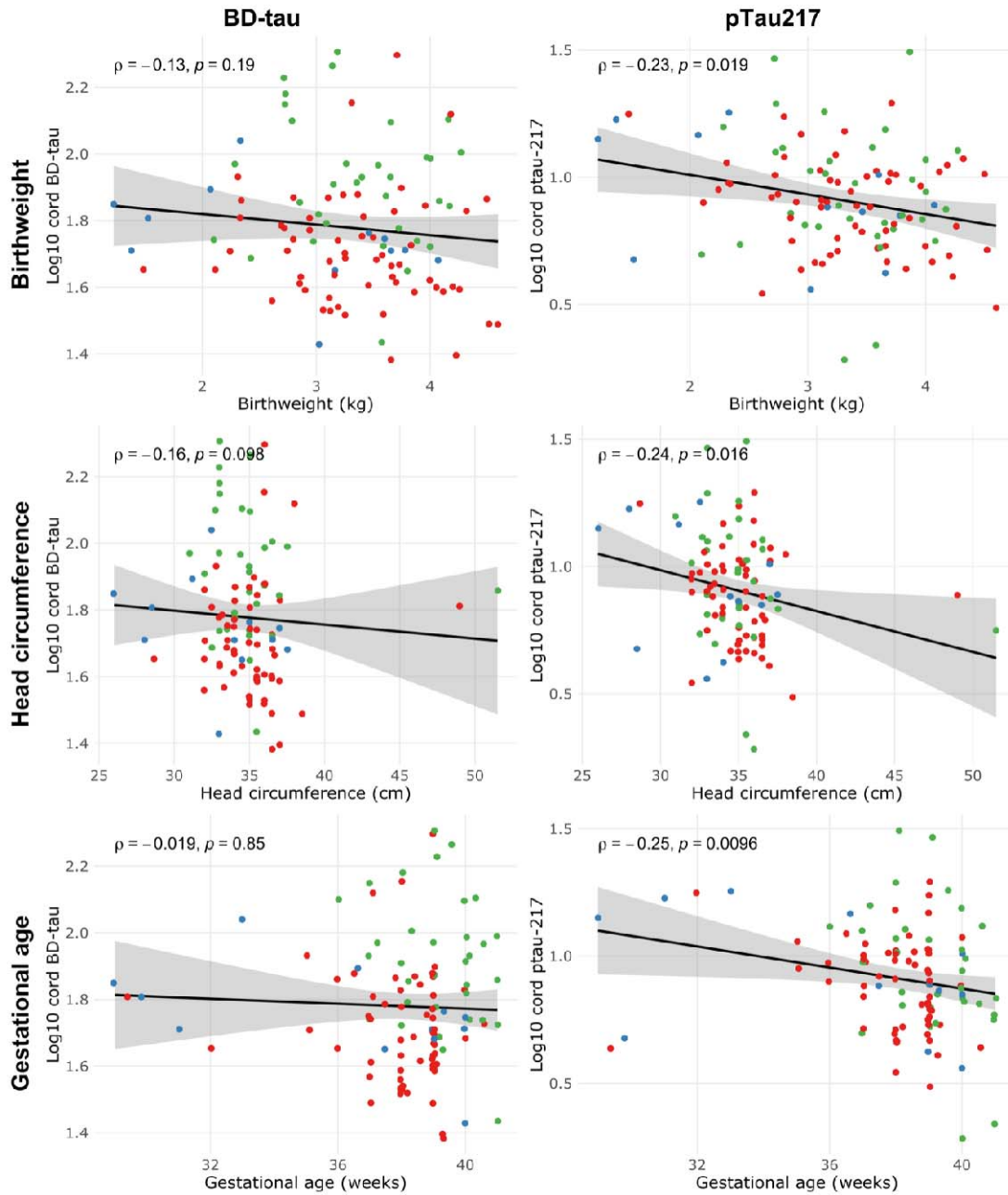


Figure 2:

Correlation between BD-tau and pTau217 and fetal factors—birthweight, head circumference, and gestational age. Spearman correlation coefficients are shown. Red dot: elective Caesarean section (CS); blue dot: emergency CS; green dot: vaginal delivery.

Relationship between tau and maternal factors

A total of 8 participants were classified as having maternal hypertension—either chronic hypertension, gestational hypertension, or pre-eclampsia. Both BD-tau and pTau217 were positively associated with maternal hypertension (median BD-tau: 81.0 vs. 54.9pg/mL, Wilcoxon $p = 0.026$; median pTau217: 10.3 vs. 7.7pg/mL, Wilcoxon $p = 0.029$), but were not associated with other maternal health conditions (Figures S2 and S3).

Relationship between tau and intrapartum factors

BD-tau was associated with mode of delivery (Kruskal–Wallis $p < 0.001$) (Figure 3), with BD-tau levels being higher with vaginal delivery compared to CS. On pairwise comparisons, no statistically significant difference was detected in BD-tau level between elective and emergency CS (median 48.4 vs. 53.6pg/mL, Wilcoxon $p = 0.22$). pTau217 did not demonstrate a significant association with mode of delivery (Kruskal–Wallis $p = 0.420$). pTau217 was negatively associated with the duration of the second stage of labour (Spearman $\rho = -0.4$, $p = 0.042$), whilst BD-tau and other biomarkers were not (Figure S4).

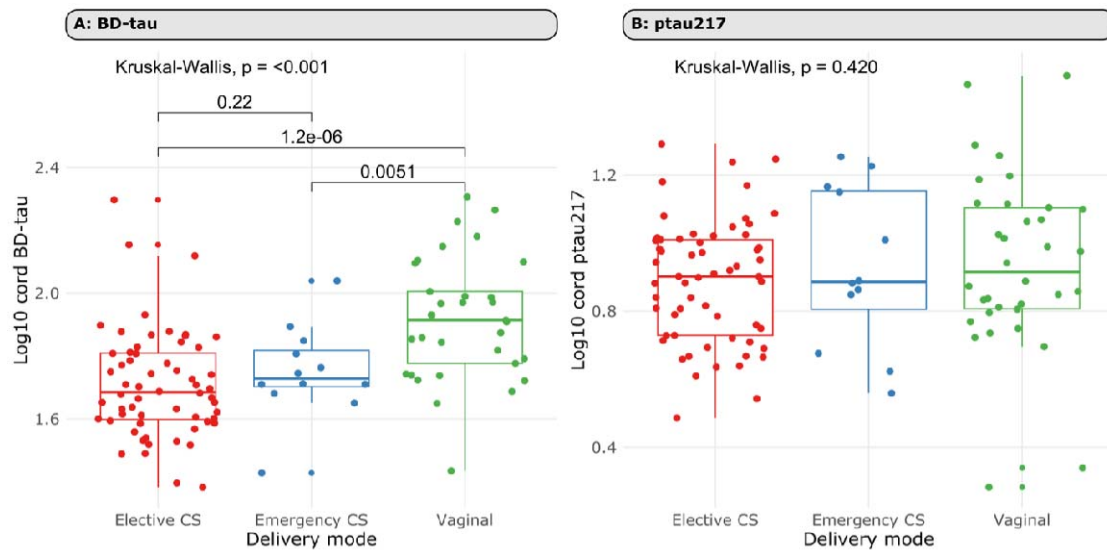


Figure 3:

Correlation between tau and mode of delivery. A: Correlation between Log_{10} BD-tau and mode of delivery. Wilcoxon p-values are shown for comparisons between individual modes of delivery. B: Correlation between Log_{10} pTau217 and mode of delivery. Red dot: elective caesarean section (CS); blue dot: emergency CS; green dot: vaginal delivery.

Correlation between tau and other biomarkers

Correlations between cord blood tau and other biomarkers are demonstrated in Figure 4. BD-tau demonstrated a positive association with pTau217 (Spearman's $\rho = 0.66$, $p < 0.001$), NfL (Spearman's $\rho = 0.58$, $p < 0.001$), and lactate (Spearman's $\rho = 0.34$, $p < 0.001$), and a negative association with cord pH (Spearman's $\rho = -0.29$, $p = 0.003$) and base excess (Spearman's $\rho = -0.35$, $p < 0.001$). pTau217 demonstrated a positive correlation with NfL (Spearman's $\rho = 0.44$, $p < 0.001$), but was not associated with other biomarkers. We did

not observe evidence of a difference between pTau217 and BD-tau in the strength of the positive correlation with NfL ($z = 1.48$, $p = 0.140$) (Table S4).

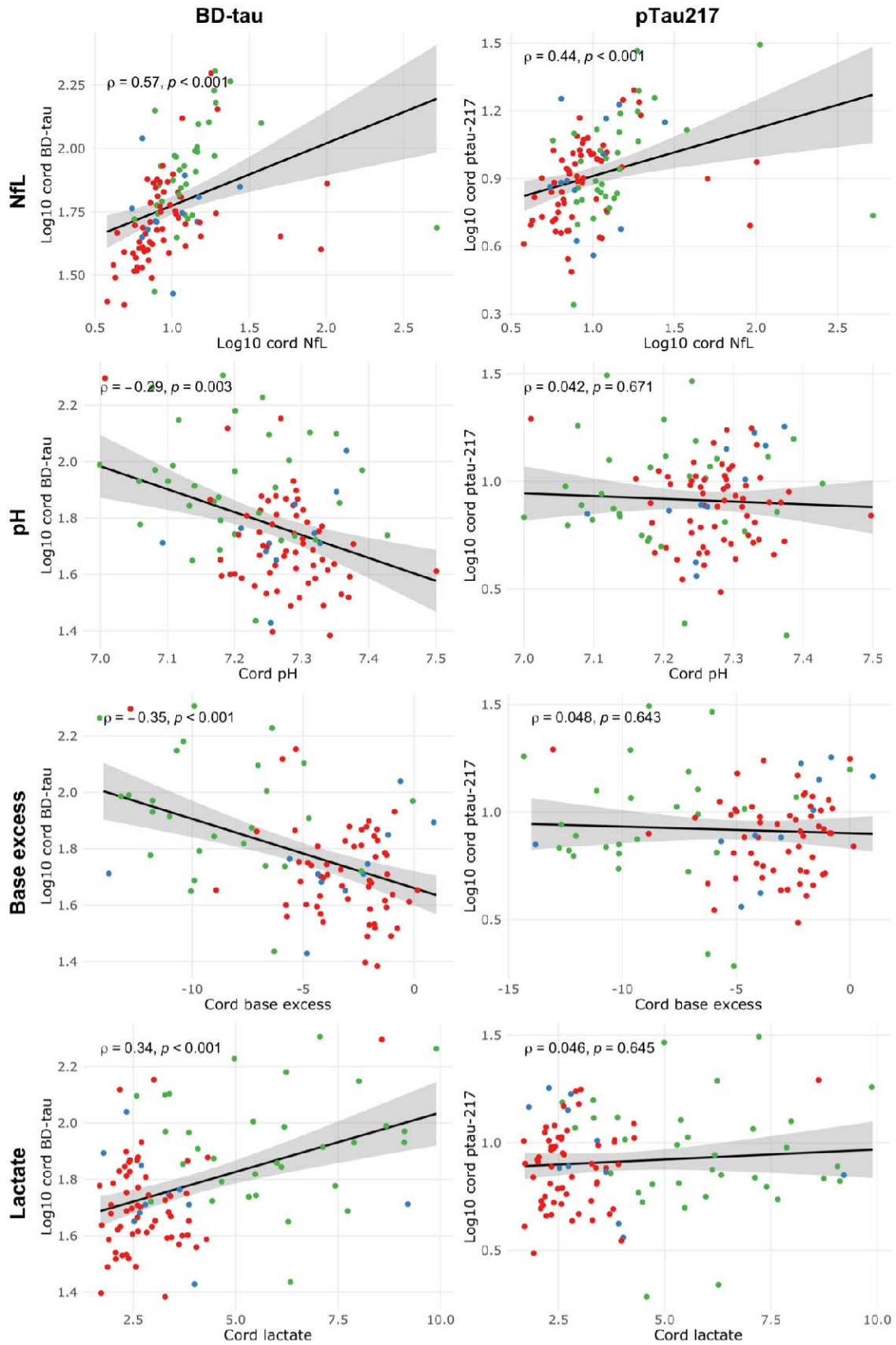


Figure 4:

Correlation between cord blood biomarkers. Association of BD-tau with Neurofilament light chain (NfL) (n=105), pH (n=104), base excess (n=94), and lactate (n=103); association of pTau217 and NfL (n=106), pH (n=105), base excess (n=95), and lactate (n=104). Red dot: elective caesarean section (CS); blue dot: emergency CS; green dot: vaginal delivery.

Relationship between tau and fetoplacental outcome

A total of 11 participants had reported placental abnormalities, 6 of which were defined as histopathological placental abnormalities (Appendix 1). Adjusting for low birth weight, the presence of histopathological placental abnormalities was positively associated with BD-tau and pTau217 (Table S5).

pTau217 levels were associated with preterm birth (median 7.7 in term participants vs. 12.2pg/mL in preterm participants; Wilcoxon $p = 0.010$). In addition, pTau217 levels were positively associated with respiratory complications (median 7.6 vs. 10.4pg/mL; Wilcoxon $p = 0.012$) and resuscitation requirement at birth (median pTau217: 7.6 vs. 10.2pg/mL; Wilcoxon $p = 0.027$), however these associations were not observed when adjusting for preterm birth (Table S6).

Discussion

Main findings

Our study adds credence to the use of cord blood tau as a biomarker in the study of neurodevelopment, perinatal hypoxia, and central nervous system injury. This is the first study to examine associations between fetomaternal outcomes and cord blood subtypes of tau—BD-tau and pTau217. We observed a correlation between BD-tau and surrogate markers of hypoxia, including serum biomarkers of anaerobic metabolism and non-reassuring fetal status. Additionally, we found associations between tau and maternal and fetoplacental factors that could contribute to increased baseline risk of encephalopathy, including preterm birth, placental abnormalities, and maternal hypertension. Understanding the relationship between the pathogenesis of hypoxic brain injury, neuron-specific biomarkers, and clinically observed outcome could aid diagnosis, prognosis, and treatment of patients suffering from HIE.

Clinical implications and future research

Our findings support previous research demonstrating positive correlations between blood tau levels and neonatal neuropathology.^{1,46–49} Previous studies have mainly involved case-control analyses of HIE cohorts, demonstrating a positive correlation between early serum tau levels, HIE diagnosis based on EEG and clinical criteria, as well as HIE severity.^{50,51} By addressing surrogate markers of fetal and neonatal hypoxia, our study of predominantly

'healthy' participants aims to link blood tau levels with early or mild HIE, and provide a foundation for future research into the clinical use of cord blood tau in HIE diagnosis. Our study demonstrated a strong correlation between tau levels and non-specific markers of acidosis and anaerobic metabolism, such as neonatal pH and lactate levels, extending previous research.^{1,47} Importantly, our study is the first to examine BD-tau specifically, which offers an advantage over these traditional biomarkers due to its greater specificity for CNS injury.^{46,49,51,52} Consistent with this, we also demonstrated correlation between tau and neurofilament light chain (NfL)—a biomarker of neurological injury validated in adult cohorts.^{49,51,53}

The proposed role of tau as a surrogate marker of fetal hypoxia is further evidenced by the correlation between early cord blood BD-tau and non-reassuring fetal status observed in this study. This finding was not statistically significant when adjusting for mode of delivery and gestational age. However, operative delivery is commonly performed for fetal distress, and adjusting for mode of delivery could therefore cause the association between BD-tau and fetal distress to be underestimated. Fetal distress as determined by 'pathological' fetal heart rate abnormalities identified intrapartum may indicate early compensatory changes to hypoxia and correlate with neonatal acidosis, low APGAR scores, increased NICU admission, and requirements for resuscitation.^{25,54–57} However, CTG patterns are user-dependent and have a low positive predictive value for clinically significant long-term adverse outcome.^{57,58} Using biomarkers to supplement intrapartum monitoring techniques can increase diagnostic specificity, guiding targeted interventions such as urgent delivery and therapeutic hypothermia. BD-tau may offer a more specific marker of neurological damage compared to

currently used fetal and neonatal blood biomarkers.^{46,49,51,52} Overall, our data suggest an underlying pathway to encephalopathy that warrants further investigation.

Our study also explored potential correlations between neonatal serum tau levels and antenatal risk factors for adverse neurological outcomes. Abnormalities in the ‘placenta–brain axis’ can contribute to intrauterine growth restriction and increased susceptibility of the fetal brain to injury during acute stress.^{59–62} It is possible that aberrant placental function may lead to dysregulated neuronal development, accounting for excessive tau phosphorylation and higher levels of pTau217 observed in participants with histopathological placental changes. Placental abnormalities—both macroscopic (e.g., cord knots, marginal cord insertion) and microscopic (e.g., avascular villi)—have also been shown to correlate with increased incidence of HIE,^{60,61} encephalopathy,^{63,64} and neonatal stroke.⁵⁹ The correlation between tau and placental abnormalities should prompt further investigation into underlying associations between tau and encephalopathy risk.

Microscopic placental changes may also occur as a consequence of pre-eclampsia (PET).⁶⁵ Non-PET hypertensive disorders may show some similar microvascular changes to a lesser unknown degree, manifesting in increased neonatal stroke risk.⁶⁵ Associations between tau and hypertension observed in this study should be further explored in an attempt to identify patients with microvascular placental changes who may be more vulnerable to physiologic stress and sentinel intrapartum events.

Our results also highlight the potential role of phosphorylated tau in neurodevelopment. In our study, pTau217 demonstrated a positive correlation with gestational age, but without

evidence of a convincing relationship with markers of hypoxic injury. Whilst dynamic changes in tau phosphorylation are essential for microtubule stabilisation, axonal growth, and neuronal function, aberrant tau phosphorylation can lead to tau filament accumulation and neuronal dysfunction and death.^{66,67} Adult studies suggest that pTau217 elevation may reflect neuronal responses to blood-brain barrier disruption and protein aggregation rather than direct neuronal injury.^{68,69} In neonates, it is unclear whether a high level of phosphorylated tau may indicate abnormal neuronal development, or if phosphorylation at specific tau domains confers likelihood of neuropathology. Future research in this area could help clarify the mechanisms behind phosphorylated tau accumulation in neonates and establish threshold levels that indicate a heightened risk of neuropathology.

Strengths and limitations

This study is the first to distinguish between specific tau subtypes—rather than relying solely on total tau levels—paving the way for more precise diagnosis and prognosis. Correlations between BD-tau and surrogate markers of hypoxia form a strong foundation for future research into the use of cord blood tau in birth asphyxia screening. The successful sample collection and analysis, using validated assays, highlights the potential for tau cord blood measurement to feasibly be incorporated into neonatal care in an Australian context.

Limitations of this study included the relatively small sample size, from a single centre. In addition, the largely ‘healthy’ maternal cohort and short-term follow-up limited adverse outcome data. Also, our study only included static measurement of cord biomarkers rather than serial samples over the first days of neonatal life. Late rises in serum tau have been

associated with adverse neurodevelopmental outcomes at one to two years of age.^{70–73}

These studies provide an impetus to explore serial neonatal tau measurements in addition to cord blood.

Conclusions

This single centre study is the first to explore neonatal cord blood tau subtypes—pTau217 and BD-tau—as promising biomarkers of hypoxia and neuropathology. We demonstrated a correlation between BD-tau and fetal distress, as well as other surrogate markers of fetal hypoxia including cord lactate, pH, and base excess. Moreover, the observed correlations between phosphorylated tau levels, maternal hypertension, and placental abnormalities underscore the complex interactions in the "placenta–brain axis," which may predispose neonates to neurological vulnerability. While our study provides preliminary evidence for the diagnostic potential of pTau217 and BD-tau, further research with larger, diverse cohorts and longitudinal tracking of tau biomarkers is necessary. This may include a composite assessment tool of neurological status through combining multiple rapid biomarker assays and imaging modalities.

Acknowledgements

HZ is a Wallenberg Scholar and a Distinguished Professor at the Swedish Research Council supported by grants from the Swedish Research Council (#2023-00356; #2022-01018 and #2019-02397), the European Union's Horizon Europe research and innovation programme under grant agreement No 101053962, Swedish State Support for Clinical Research (#ALFGBG-71320), the Alzheimer Drug Discovery Foundation (ADDF), USA (#201809-

2016862), the AD Strategic Fund and the Alzheimer's Association (#ADSF-21-831376-C, #ADSF-21-831381-C, #ADSF-21-831377-C, and #ADSF-24-1284328-C), the European Partnership on Metrology, co-financed from the European Union's Horizon Europe Research and Innovation Programme and by the Participating States (NEuroBioStand, #22HLT07), the Bluefield Project, Cure Alzheimer's Fund, the Olav Thon Foundation, the Erling-Persson Family Foundation, Familjen Rönströms Stiftelse, Stiftelsen för Gamla Tjänarinnor, Hjärnfonden, Sweden (#FO2022-0270), the European Union's Horizon 2020 research and innovation programme under the Marie Skłodowska-Curie grant agreement No 860197 (MIRIADE), the European Union Joint Programme – Neurodegenerative Disease Research (JPND2021-00694), the National Institute for Health and Care Research University College London Hospitals Biomedical Research Centre, and the UK Dementia Research Institute at UCL (UKDRI-1003).

Conflicts of interest

HZ has served at scientific advisory boards and/or as a consultant for Abbvie, Acumen, Alector, Alzinova, ALZPath, Amylyx, Annexon, Apellis, Artery Therapeutics, AZTherapies, Cognito Therapeutics, CogRx, Denali, Eisai, LabCorp, Merry Life, Nervgen, Novo Nordisk, Optoceutics, Passage Bio, Pinteon Therapeutics, Prothena, Red Abbey Labs, reMYND, Roche, Samumed, Siemens Healthineers, Triplet Therapeutics, and Wave, has given lectures sponsored by Alzecure, BioArctic, Biogen, Celectricon, Fujirebio, Lilly, Novo Nordisk, Roche, and WebMD, and is a co-founder of Brain Biomarker Solutions in Gothenburg AB (BBS), which is a part of the GU Ventures Incubator Program (outside submitted work).

Contribution of Authorship

RDS designed the study in consultation with BdV, KK, BM, FG, and HM. FG, HZ and KB supplied the assays and managed biofluid analysis. KK consulted hospital records for relevant cohort data. EP and TP conducted the statistical analysis. EP, FG, and TP drafted the manuscript. All authors provided critical feedback on the manuscript.

Ethics approval

Ethics approval was granted by the Sydney Local Health District Human Research and Ethics Committee (approval reference: 2022/ETH01100). Data were reported according to the Strengthening the Reporting of Observational Studies in Epidemiology (STROBE) guidelines.

Funding

The work is supported by US National Institutes of Health (NIH) grant R01 AG063849-01 (RDS). NIH R01 grants are subject to external peer review for scientific quality, and priority score is based advisory council assessment. KB is supported by the Swedish Research Council (#2017-00915 and #2022-00732), the Swedish Alzheimer Foundation (#AF-930351, #AF-939721, #AF-968270, and #AF-994551), Hjärnfonden, Sweden (#FO2017-0243 and #ALZ2022-0006), the Swedish state under the agreement between the Swedish government and the County Councils, the ALF-agreement (#ALFGBG-715986 and #ALFGBG-965240), the European Union Joint Program for Neurodegenerative Disorders (JPND2019-466-236), the Alzheimer's Association 2021 Zenith Award (ZEN-21-848495), the Alzheimer's Association 2022-2025 Grant (SG-23-1038904 QC), La Fondation Recherche Alzheimer (FRA), Paris, France, and the Kirsten and Freddy Johansen Foundation, Copenhagen, Denmark. HZ is a Wallenberg Scholar and a Distinguished Professor at the Swedish Research Council supported by grants from the Swedish Research Council (#2023-00356; #2022-01018 and

#2019-02397), the European Union's Horizon Europe research and innovation programme under grant agreement No 101053962, Swedish State Support for Clinical Research (#ALFGBG-71320), the Alzheimer Drug Discovery Foundation (ADDF), USA (#201809-2016862), the AD Strategic Fund and the Alzheimer's Association (#ADSF-21-831376-C, #ADSF-21-831381-C, #ADSF-21-831377-C, and #ADSF-24-1284328-C), the Bluefield Project, Cure Alzheimer's Fund, the Olav Thon Foundation, the Erling-Persson Family Foundation, Stiftelsen för Gamla Tjänarinnor, Hjärnfonden, Sweden (#FO2022-0270), the European Union's Horizon 2020 research and innovation programme under the Marie Skłodowska-Curie grant agreement No 860197 (MIRIADE), the European Union Joint Programme – Neurodegenerative Disease Research (JPND2021-00694), the National Institute for Health and Care Research University College London Hospitals Biomedical Research Centre, and the UK Dementia Research Institute at UCL (UKDRI-1003).

References

1. Gaulee P, Yang Z, Sura L, Xu H, Rossignol C, Weiss MD, et al. Concentration of Serum Biomarkers of Brain Injury in Neonates With a Low Cord pH With or Without Mild Hypoxic-Ischemic Encephalopathy. *Front Neurol*. 2022 Jul 7;13:934755.
2. Russ JB, Simmons R, Glass HC. Neonatal Encephalopathy: Beyond Hypoxic-Ischemic Encephalopathy. *NeoReviews*. 2021 Mar;22(3):e148–62.
3. Douglas-Escobar M, Weiss MD. Hypoxic-ischemic encephalopathy: a review for the clinician. *JAMA Pediatr*. 2015 Apr;169(4):397–403.
4. Wassink G, Davidson JO, Dhillon SK, Zhou K, Bennet L, Thoresen M, et al. Therapeutic Hypothermia in Neonatal Hypoxic-Ischemic Encephalopathy. *Curr Neurol Neurosci Rep*. 2019 Jan 14;19(2):2.
5. Jacobs SE, Berg M, Hunt R, Tarnow-Mordi WO, Inder TE, Davis PG. Cooling for newborns with hypoxic ischaemic encephalopathy. *Cochrane Database Syst Rev*. 2013 Jan 31;2013(1):CD003311.
6. Leijser LM, Vein AA, Liauw L, Strauss T, Veen S, Wezel-Meijler G van. Prediction of short-term neurological outcome in full-term neonates with hypoxic-ischaemic encephalopathy based on combined use of electroencephalogram and neuro-imaging. *Neuropediatrics*. 2007 Oct;38(5):219–27.
7. Sarnat HB, Sarnat MS. Neonatal encephalopathy following fetal distress. A clinical and electroencephalographic study. *Arch Neurol*. 1976 Oct;33(10):696–705.
8. Murray DM, Ryan CA, Boylan GB, Fitzgerald AP, Connolly S. Prediction of seizures in asphyxiated neonates: correlation with continuous video-electroencephalographic monitoring. *Pediatrics*. 2006 Jul;118(1):41–6.

9. Peeples ES, Rao R, Dizon MLV, Johnson YR, Joe P, Flibotte J, et al. Predictive Models of Neurodevelopmental Outcomes After Neonatal Hypoxic-Ischemic Encephalopathy. *Pediatrics*. 2021 Feb;147(2):e2020022962.
10. Hagberg H, David Edwards A, Groenendaal F. Perinatal brain damage: The term infant. *Neurobiol Dis*. 2016 Aug;92(Pt A):102–12.
11. Kumar N, Yadav A. Umbilical cord arterial blood lactate dehydrogenase and pH as predictors of perinatal outcome in high-risk term pregnancies: A cohort study. *J Mother Child*. 2022 Mar 1;26(1):27–34.
12. Musaba MW, Nambozo B, Mukunya D, Wandabwa J, Barageine JK, Kiondo P, et al. Maternal and umbilical cord blood lactate for predicting perinatal death: a secondary analysis of data from a randomized controlled trial. *BMC Pediatr*. 2023 Apr 18;23(1):179.
13. Olofsson P. Umbilical cord pH, blood gases, and lactate at birth: normal values, interpretation, and clinical utility. *Am J Obstet Gynecol*. 2023 May;228(5S):S1222–40.
14. Fiala M, Baumert M, Surmiak P, Walencka Z, Sodowska P. Umbilical markers of perinatal hypoxia. *Ginekol Pol*. 2016;87(3):200–4.
15. Graham EM, Everett AD, Delpech JC, Northington FJ. Blood biomarkers for evaluation of perinatal encephalopathy: state of the art. *Curr Opin Pediatr*. 2018 Apr;30(2):199–203.
16. Gonzalez-Ortiz F, Dulewicz M, Ashton NJ, Kac PR, Zetterberg H, Andersson E, et al. Association of Serum Brain-Derived Tau With Clinical Outcome and Longitudinal Change in Patients With Severe Traumatic Brain Injury. *JAMA Netw Open*. 2023 Jul 3;6(7):e2321554.

17. Cherry JD, Esnault CD, Baucom ZH, Tripodis Y, Huber BR, Alvarez VE, et al. Tau isoforms are differentially expressed across the hippocampus in chronic traumatic encephalopathy and Alzheimer's disease. *Acta Neuropathol Commun*. 2021 May 12;9(1):86.
18. Edwards G, Zhao J, Dash PK, Soto C, Moreno-Gonzalez I. Traumatic Brain Injury Induces Tau Aggregation and Spreading. *J Neurotrauma*. 2020 Jan 1;37(1):80–92.
19. Tanuma N, Miyata R, Kumada S, Kubota M, Takanashi J ichi, Okumura A, et al. The axonal damage marker tau protein in the cerebrospinal fluid is increased in patients with acute encephalopathy with biphasic seizures and late reduced diffusion. *Brain Dev*. 2010 Jun;32(6):435–9.
20. Tarkowska A, Furmaga-Jabłońska W, Bogucki J, Kocki J, Pluta R. Preservation of Biomarkers Associated with Alzheimer's Disease (Amyloid Peptides 1-38, 1-40, 1-42, Tau Protein, Beclin 1) in the Blood of Neonates after Perinatal Asphyxia. *Int J Mol Sci*. 2023 Aug 27;24(17):13292.
21. Ashton NJ, Brum WS, Di Molfetta G, Benedet AL, Arslan B, Jonaitis E, et al. Diagnostic Accuracy of a Plasma Phosphorylated Tau 217 Immunoassay for Alzheimer Disease Pathology. *JAMA Neurol*. 2024 Jan 22;e235319.
22. Vlegels N, Gonzalez-Ortiz F, Knuth NL, Khalifeh N, Gesierich B, Müller F, et al. Brain-derived Tau for Monitoring Brain Injury in Acute Ischemic Stroke [Internet]. 2023 [cited 2024 Apr 8]. Available from: <http://medrxiv.org/lookup/doi/10.1101/2023.11.18.23298728>.
23. Gundersen JK, Gonzalez-Ortiz F, Karikari T, Kirsebom BE, Mertes K, Zetterberg H, et al. Clinical value of plasma brain-derived tau and p-tau217 in acute ischemic stroke. *Cereb Circ - Cogn Behav*. 2024;6:100291.

24. Ashton NJ, Puig-Pijoan A, Milà-Alomà M, Fernández-Lebrero A, García-Escobar G, González-Ortiz F, et al. Plasma and CSF biomarkers in a memory clinic: Head-to-head comparison of phosphorylated tau immunoassays. *Alzheimers Dement*. 2023 May;19(5):1913–24.
25. Gonzalez-Ortiz F, Ferreira PCL, González-Escalante A, Montoliu-Gaya L, Ortiz-Romero P, Kac PR, et al. A novel ultrasensitive assay for plasma p-tau217: Performance in individuals with subjective cognitive decline and early Alzheimer’s disease. *Alzheimers Dement*. 2024 Feb;20(2):1239–49.
26. Rubenstein R, Chang B, Yue JK, Chiu A, Winkler EA, Puccio AM, et al. Comparing Plasma Phospho Tau, Total Tau, and Phospho Tau–Total Tau Ratio as Acute and Chronic Traumatic Brain Injury Biomarkers. *JAMA Neurol*. 2017 Sep 1;74(9):1063.
27. Gonzalez-Ortiz F, Turton M, Kac PR, Smirnov D, Premi E, Ghidoni R, et al. Brain-derived tau: a novel blood-based biomarker for Alzheimer’s disease-type neurodegeneration. *Brain*. 2023 Mar 1;146(3):1152–65.
28. Stanne TM, Gonzalez-Ortiz F, Brännmark C, Jood K, Karikari T, Blennow K, et al. Association of Plasma Brain-Derived Tau With Functional Outcome After Ischemic Stroke. *Neurology*. 2024 Feb 27;102(4):e209129.
29. Australian Government. National Statement on Ethical Conduct in Human Research 2007 (Updated 2018) [Internet]. National Health and Medical Research Council; 2018. Available from: <https://www.nhmrc.gov.au>
30. European Medicines Agency. ICH topic E6 (R1): Note for guidance on good clinical practice (CPMP/ICH/135/95) [Internet]. European Medicines Agency; 1996. Available from: <https://www.ema.europa.eu>

31. von Elm E, Altman DG, Egger M, Pocock SJ, Gøtzsche PC, Vandenbroucke JP, et al. The Strengthening the Reporting of Observational Studies in Epidemiology (STROBE) statement: guidelines for reporting observational studies. *J Clin Epidemiol*. 2008 Apr;61(4):344–9.
32. Khong TY, Mooney EE, Ariel I, Balmus NCM, Boyd TK, Brundler MA, et al. Sampling and Definitions of Placental Lesions: Amsterdam Placental Workshop Group Consensus Statement. *Arch Pathol Lab Med*. 2016 Jul;140(7):698–713.
33. Fetal acid-base balance assessment: SA Perinatal Practice Guidelines (v5.1) [Internet]. South Australia Health; 2020. Available from: https://www.sahealth.sa.gov.au/wps/wcm/connect/4953cc804ee46e14bcb7bdd150ce4f37/Fetal+Acid+Base+Balance+Assessment_PPG_v5_1.pdf?MOD=AJPERES&CACHEID=ROOTWORKSPACE-4953cc804ee46e14bcb7bdd150ce4f37-p4bGZOj
34. East CE, Leader LR, Sheehan P, Henshall NE, Colditz PB, Lau R. Intrapartum fetal scalp lactate sampling for fetal assessment in the presence of a non-reassuring fetal heart rate trace. *Cochrane Database Syst Rev*. 2015 May 1;2015(5):CD006174.
35. Fetal blood sampling in intrapartum care: SESLHD clinical procedure. 2019.
36. New South Wales Ministry of Health. Heart rate monitoring guide [Internet]. 2018. Available from: https://www1.health.nsw.gov.au/pds/Pages/doc.aspx?dn=GL2018_025
37. ANZCOR (Australian and New Zealand Committee on Resuscitation). Guideline 13.1 – Introduction to Resuscitation of the Newborn [Internet]. 2024. Available from: <https://www.anzcor.org/home/neonatal-resuscitation/guideline-13-1-introduction-to-resuscitation-of-the-newborn/>

38. Zalcborg D, Kramer K, Payne E, Payne T, Marathe S, Mahajan N, et al. unpublished observation. 2024.
39. Hernan M, Robins J. Causal Inference: What If [Internet]. Boca Raton: Chapman & Hall/CRC; 2020. Available from: https://www.hsph.harvard.edu/miguel-hernan/wp-content/uploads/sites/1268/2024/01/hernanrobins_WhatIf_2jan24.pdf
40. Meng X li, Rosenthal R, Rubin DB. Comparing correlated correlation coefficients. Psychol Bull. 1992 Jan;111(1):172–5.
41. World Health Organization. Low birth weight [Internet]. 2024 [cited 2024 Sep 19]. Available from: [https://www.who.int/data/nutrition/nlis/info/low-birth-weight#:~:text=Low%20birth%20weight%20has%20been,2500%20grams%20\(5.5%20pounds\).](https://www.who.int/data/nutrition/nlis/info/low-birth-weight#:~:text=Low%20birth%20weight%20has%20been,2500%20grams%20(5.5%20pounds).)
42. Diedenhofen B, Musch J. cocor: a comprehensive solution for the statistical comparison of correlations. PloS One. 2015;10(3):e0121945.
43. Arel-Bundock V, Greifer N, Heiss A. How to Interpret Statistical Models Using margineffects in R and Python. J Stat Softw. Forthcoming;
44. Robin X, Turck N, Hainard A, Tiberti N, Lisacek F, Sanchez JC, et al. pROC: an open-source package for R and S+ to analyze and compare ROC curves. BMC Bioinformatics. 2011 Dec;12(1):77.
45. Sachs M. plotROC: A Tool for Plotting ROC Curves. J Stat Softw Code Snippets. 2017;79(2):1–19.
46. Wu H, Li Z, Yang X, Liu J, Wang W, Liu G. SBDPs and Tau proteins for diagnosis and hypothermia therapy in neonatal hypoxic ischemic encephalopathy. Exp Ther Med. 2017 Jan;13(1):225–9.

47. Chavez-Valdez R, Miller S, Spahic H, Vaidya D, Parkinson C, Dietrick B, et al. Therapeutic Hypothermia Modulates the Relationships Between Indicators of Severity of Neonatal Hypoxic Ischemic Encephalopathy and Serum Biomarkers. *Front Neurol*. 2021 Nov 2;12:748150.
48. Dietrick B, Molloy E, Massaro AN, Strickland T, Zhu J, Slevin M, et al. Plasma and Cerebrospinal Fluid Candidate Biomarkers of Neonatal Encephalopathy Severity and Neurodevelopmental Outcomes. *J Pediatr*. 2020 Nov;226:71-79.e5.
49. Toorell H, Zetterberg H, Blennow K, Sävman K, Hagberg H. Increase of neuronal injury markers Tau and neurofilament light proteins in umbilical blood after intrapartum asphyxia. *J Matern Fetal Neonatal Med*. 2018 Sep 17;31(18):2468–72.
50. Lv HY, Wang QL, Chen HY, You YJ, Ren PS, Li LX. Study on serum Tau protein level and neurodevelopmental outcome of placental abruption with neonatal hypoxic-ischemic encephalopathy. *J Matern Fetal Neonatal Med*. 2020 Dec 1;33(23):3887–93.
51. Toorell H, Carlsson Y, Hallberg B, O’Riordian MN, Walsh BH, O’Sullivan MP, et al. Neuro-Specific and Immuno-Inflammatory Biomarkers in Umbilical Cord Blood in Neonatal Hypoxic-Ischemic Encephalopathy. *Neonatology*. 2023 Sep 29;1–9.
52. Zhao J, Wu H, Tang XQ. Tau internalization: A complex step in tau propagation. *Ageing Res Rev*. 2021 May;67:101272.
53. Depoorter A, Neumann RP, Barro C, Fisch U, Weber P, Kuhle J, et al. Neurofilament Light Chain: Blood Biomarker of Neonatal Neuronal Injury. *Front Neurol*. 2018;9:984.
54. Medforth J, Ball L, Walker A, Battersby S, Stables S, editors. *Oxford handbook of midwifery*. Third edition. Oxford: Oxford University Press; 2017.
55. Cunningham FG, editor. *Williams obstetrics*. 24th edition. New York: McGraw-Hill Medical; 2014. 1358 p.

56. Jonsson M, Ågren J, Nordén-Lindeberg S, Ohlin A, Hanson U. Neonatal encephalopathy and the association to asphyxia in labor. *Am J Obstet Gynecol*. 2014 Dec;211(6):667.e1-8.
57. Lear CA, Westgate JA, Ugwumadu A, Nijhuis JG, Stone PR, Georgieva A, et al. Understanding Fetal Heart Rate Patterns That May Predict Antenatal and Intrapartum Neural Injury. *Semin Pediatr Neurol*. 2018 Dec;28:3–16.
58. Beard RW, Filshie GM, Knight CA, Roberts GM. The significance of the changes in the continuous fetal heart rate in the first stage of labour. *BJOG Int J Obstet Gynaecol*. 1971 Oct;78(10):865–81.
59. Burton GJ, Jauniaux E. Pathophysiology of placental-derived fetal growth restriction. *Am J Obstet Gynecol*. 2018 Feb;218(2S):S745–61.
60. Penn AA, Wintermark P, Chalak LF, Armstrong J, Redline R, Scher MS, et al. Placental contribution to neonatal encephalopathy. *Semin Fetal Neonatal Med*. 2021 Aug;26(4):101276.
61. Fox A, Doyle E, Geary M, Hayes B. Placental pathology and neonatal encephalopathy. *Int J Gynaecol Obstet Off Organ Int Fed Gynaecol Obstet*. 2023 Jan;160(1):22–7.
62. Rosenfeld CS. The placenta-brain-axis. *J Neurosci Res*. 2021 Jan;99(1):271–83.
63. Badawi N, Kurinczuk JJ, Keogh JM, Alessandri LM, O’Sullivan F, Burton PR, et al. Antepartum risk factors for newborn encephalopathy: the Western Australian case-control study. *BMJ*. 1998 Dec 5;317(7172):1549–53.
64. Bingham A, Gundogan F, Rand K, Farrar J, Tucker R, Lupton AR. Placental Findings in Infants with Hypoxic-Ischemic Encephalopathy: The Importance of the Comparison Group. *J Pediatr*. 2022 Mar;242:106–12.

65. Mann JR, McDermott S, Pan C, Hardin JW. Maternal hypertension and intrapartum fever are associated with increased risk of ischemic stroke during infancy. *Dev Med Child Neurol*. 2013 Jan;55(1):58–64.
66. Biernat J, Mandelkow EM. The development of cell processes induced by tau protein requires phosphorylation of serine 262 and 356 in the repeat domain and is inhibited by phosphorylation in the proline-rich domains. *Mol Biol Cell*. 1999 Mar;10(3):727–40.
67. Stoothoff WH, Johnson GVW. Tau phosphorylation: physiological and pathological consequences. *Biochim Biophys Acta*. 2005 Jan 3;1739(2–3):280–97.
68. Flavin WP, Hosseini H, Ruberti JW, Kavehpour HP, Giza CC, Prins ML. Traumatic brain injury and the pathways to cerebral tau accumulation. *Front Neurol*. 2023;14:1239653.
69. Palmqvist S, Janelidze S, Quiroz YT, Zetterberg H, Lopera F, Stomrud E, et al. Discriminative Accuracy of Plasma Phospho-tau217 for Alzheimer Disease vs Other Neurodegenerative Disorders. *JAMA*. 2020 Aug 25;324(8):772–81.
70. Juul SE, Voldal E, Comstock BA, Massaro AN, Bammler TK, Mayock DE, et al. Association of High-Dose Erythropoietin With Circulating Biomarkers and Neurodevelopmental Outcomes Among Neonates With Hypoxic Ischemic Encephalopathy: A Secondary Analysis of the HEAL Randomized Clinical Trial. *JAMA Netw Open*. 2023 Jul 7;6(7):e2322131.
71. Massaro AN, Wu YW, Bammler TK, Comstock B, Mathur A, McKinstry RC, et al. Plasma Biomarkers of Brain Injury in Neonatal Hypoxic-Ischemic Encephalopathy. *J Pediatr*. 2018 Mar;194:67-75.e1.

72. Yang Z, Xu H, Sura L, Arja RD, Patterson RL, Rossignol C, et al. Combined GFAP, NFL, Tau, and UCH-L1 panel increases prediction of outcomes in neonatal encephalopathy. *Pediatr Res.* 2023 Apr;93(5):1199–207.
73. McGowan MM, O’Kane AC, Vezina G, Chang T, Bendush N, Glass P, et al. Serial plasma biomarkers of brain injury in infants with neonatal encephalopathy treated with therapeutic hypothermia. *Pediatr Res.* 2021 Dec;90(6):1228–34.