

Post-COVID sequelae in people with multiple sclerosis and related disorders: a multicenter cross-sectional study

Chen Hu*, Jiyeon Son*, Lindsay McAlpine*, Amit Bar-Or, Megan Dahl, Sugeidy Ferreira Brito, Katelyn Kavak, Kaho Onomichi, Christopher Perrone, Claire S. Riley, Emily Song, Elizabeth LS Walker, Bianca Weinstock Guttman, Philip L. De Jager, Erin E Longbrake, and Zongqi Xia**

* Share co-first authorship

** Corresponding author.

Tel: 412-383-5377

Mail address: 3501 Fifth Avenue, BST 3, Suite 10-044, Pittsburgh, PA 15260

Email address: zxia1@post.harvard.edu

Manuscript word count: 3,449

Authorship information

Name	Institution
Chen Hu*, MS	University of Pittsburgh School of Public Health
Jiyeon Son*, MD	Columbia University Irving Medical Center
Lindsay McAlpine*, MD	Yale University School of Medicine
Amit Bar-Or, MD	University of Pennsylvania School of Medicine
Megan Dahl, BS	University of Pittsburgh Department of Neurology
Sugeidy Ferreira Brito, BA	Columbia University Irving Medical Center
Katelyn Kavak, MSc	University at Buffalo Department of Neurology
Kaho B. Onomichi, MSc	Columbia University Irving Medical Center
Christopher Perrone, MD	University of Pennsylvania School of Medicine
Claire S. Riley, MD	Columbia University Irving Medical Center
Emily Song, BS	University of Pittsburgh Department of Neurology
Libby LS Walker, BS	University of Pittsburgh Department of Neurology
Bianca Weinstock Guttman, MD	University at Buffalo Department of Neurology
Philip L. De Jager, MD PhD	Columbia University Irving Medical Center
Erin E Longbrake, MD PhD	Yale University School of Medicine
Zongqi Xia**, MD PhD	University of Pittsburgh Department of Neurology

Key Points

Question: Are people with multiple sclerosis and related disorders (pwMSRD) more susceptible to post-COVID sequelae?

Findings: In this cross-sectional study that included 969 patients and 1,003 controls, pwMSRD had higher odds of experiencing post-COVID sequelae than controls after acute COVID-19. The association was mediated by the severity of acute COVID-19. Post-COVID symptoms, both new and worsening symptoms from baseline, were associated with worse neurological disability.

Meaning: These findings highlight the importance of recognizing and effectively managing post-COVID sequelae in pwMSRD.

Abstract

Importance: Management of long-term consequences after acute COVID-19 in people with multiple sclerosis and related disorders (pwMSRD) is challenging due to overlapping clinical presentations.

There have been limited investigations of post-COVID sequelae in pwMSRD.

Objective: We assessed whether pwMSRD were more susceptible to post-COVID sequelae when compared to controls.

Design: This cross-sectional study leveraged a multi-center cohort of pwMSRD and controls.

Setting: A one-time web-based survey was conducted between August and December 2022.

Participants: Out of the 2,156 participants who consented, the analysis included 1,972 after excluding 184 due to missing data.

Main Exposure: Diagnosis of MSRD.

Main Outcomes and Measures: We surveyed 71 symptoms that emerged at least 1 month after the initial acute COVID-19 and were either new onset or worsening from the pre-COVID baseline. We assessed whether each participant experienced (1) ≥ 1 new symptom, (2) ≥ 1 worsening symptom from baseline.

Results: The study included 969 pwMSRD (799 [82.5%] women, mean age 51.8 [SD 12.1] years) and 1,003 controls (796 [79.4%] women, mean age 45.2 [SD 10.3] years). 613 pwMSRD (63.5%) and 614 controls (61.2%) experienced acute COVID-19. Compared to controls, pwMSRD had higher odds of developing a new symptom (OR=1.55; 95%CI=1.22-1.98; $p < .01$) and experiencing a worsening symptom from baseline (OR=3.39; 95%CI=2.64-4.36; $p < .01$). PwMSRD were more likely to develop new symptoms involving the pulmonary as well as head, eyes, ears, nose, and throat systems, and have worsening systemic, musculoskeletal, and neuropsychiatric symptoms from baseline. Acute COVID-19 severity mediated $>20\%$ of the association between MSRD diagnosis and post-COVID sequelae. In the subgroup of pwMS, having post-COVID sequelae was associated with worse functional disability.

Conclusions and Relevance: Compared to controls, pwMSRD experienced an increased risk of post-COVID sequelae involving multiple organ systems. Post-COVID sequelae was associated with greater

disability in pwMS. The findings highlighted the importance of recognizing and managing long-term symptoms following acute COVID-19 in this vulnerable population.

Abbreviations

aOR, adjusted odds ratio;

CNS, central nervous system;

CCI, Charlson comorbidity index;

DMT, disease-modifying therapy;

HEENT, head, eyes, ears, nose, and throat;

MOGAD, myelin oligodendrocyte glycoprotein antibody-associated disease;

MS, multiple sclerosis;

MSRD, multiple sclerosis and related disorders;

MSReCOV, Multiple Sclerosis Resilience to COVID-19 Collaborative;

MSRS-R, multiple sclerosis rating scale, revised;

NID, neuroimmunological disorders;

NMOSD, neuromyelitis optica spectrum disorder;

PDDS, patient determined disease steps;

PRO, patient-reported outcomes;

PROMIS, Patient-reported outcomes measurement information system;

pwMS, people with multiple sclerosis;

pwMSRD, people with multiple sclerosis and related disorders;

REDCap, Research Electronic Data Capture.

Introduction

The Coronavirus disease 2019 (COVID-19) pandemic disproportionately affected people with multiple sclerosis and related disorders (pwMSRD).¹ While post-COVID sequelae (or long-COVID) remains a major public health concern and reduces individual quality of life,²⁻⁵ few studies have investigated the epidemiology of post-COVID sequelae and the impact of long-term consequences on disability in this vulnerable population.⁶

In a retrospective single-center study in the United States, 36.9% of pwMSRD developed neurologic symptoms persisting at least 3 months after COVID-19.⁷ A prospective cohort study of the United Kingdom Multiple Sclerosis Registry observed that 29.7% of pwMSRD developed long-standing symptoms ≥ 4 weeks and 12.4% ≥ 12 weeks after COVID-19.⁸ Another prospective study from Poland reported 20.4% of pwMSRD had symptoms lasting over 12 weeks.⁹ Notably, these studies did not differentiate new symptoms from pre-existing symptoms, which would be clinically relevant for the diagnosis and management of post-COVID sequelae in pwMSRD. Identifying post-COVID sequelae in pwMSRD and other chronic autoimmune diseases such as inflammatory rheumatic diseases is more complicated and challenging than the general population.¹⁰ For instance, new or worsening symptoms occurring after acute COVID-19 may be attributable to the underlying neuroimmunological diseases.

Given that both COVID-19 and MSRD, the latter encompassing chronic autoimmune disorders affecting the central nervous system, could produce overlapping neurological symptoms such as fatigue, cognitive impairment, weakness and paresthesia, case-control studies are crucial.¹¹ In a case-control study from the Austrian MS-COVID-19 registry, pwMSRD had higher frequency of fatigue, hyposmia, and dyspnea at months 3 and 6 after acute COVID-19 than matched healthy controls, but no difference at month 12.¹²

The occurrence and severity of acute and long COVID-19 seemingly depend on host response. It is unclear whether pwMSRD are more susceptible to post-COVID sequelae than the general population and whether post-COVID sequelae symptoms differ from the general population. Few studies have explored the risk factors of post-COVID sequelae in pwMS and its association with MS-related disability and functional outcomes.^{8,13} Given the rising number of individuals affected by long

COVID and the population living with MSRD, understanding the association between these two conditions has relevance for clinical neuroscience and public health.

Methods

Study design and participants

This cross-sectional study leveraged the Multiple Sclerosis Resilience to COVID-19 (MSReCOV) Collaborative, a cohort composed of pwMSRD and controls from five US-based clinical neuroimmunology centers (**Figure 1**).^{14–17} We previously reported the design of the MSReCOV Collaborative.¹⁸ We analyzed data completed retrospectively by MSReCOV participants through a secure web survey using the Research Electronic Data Capture (REDCap) platform between August and December 2022. All participants provided written informed consent. The response rate was 92%.

Measurements

Demographic and clinical profile (neuroimmunological diseases, COVID-19, and vaccination)

We collected age, gender, race, ethnicity, comorbidities (adapted from the Charlson Comorbidity Index [CCI]) and neuroimmunological diagnosis. To indicate the comorbidity burden, we categorized CCI as none (CCI=0), mild ($1 \leq \text{CCI} \leq 2$), moderate ($3 \leq \text{CCI} \leq 5$), or severe (CCI ≥ 6).

Neurologist-confirmed diagnosis of MSRD included multiple sclerosis (MS), neuromyelitis optica spectrum disorder (NMOSD), myelin oligodendrocyte glycoprotein antibody-associated disease (MOGAD), and other neuroimmunological disorders (NID). Among pwMS, we further collected information on disease duration (years from diagnosis to survey), subtype, and disease-modifying therapy (DMT).

Participants reported their method of diagnosis, dates and severity of the acute COVID-19 episode, and the type and dose of the COVID-19 vaccine. Acute COVID-19 was defined as having a known or suspected COVID-19 as determined by a polymerase chain reaction (PCR) test, rapid antigen test (in a laboratory, at home, or in an unsure setting), or having symptoms consistent with the Centers for Disease Control and Prevention (CDC) list of COVID-19 symptoms during the pandemic.¹⁹

Participants who had acute COVID-19 further reported the extent of the severity as asymptomatic, mild

(feeling ill but able to function), moderate (feeling very ill but without hospital admission), severe (requiring hospital admission), and critical (requiring management in the intensive care unit).

Primary outcomes: post-COVID sequelae

For the primary study objective, we compared the risk of post-COVID sequelae between pwMSRD and controls. An expert group of neurologists (JS, LM, PLD, EL, ZX) with subspecialty in clinical neuroimmunology developed the post-COVID survey, comprising a comprehensive list of 12 organ systems and 71 symptoms (**eTable 1**). To identify long-term symptoms after acute COVID-19, we ascertained the period starting 1 month after the first episode of acute COVID-19 onset to the time of the survey. Importantly, we asked whether the symptoms they experienced were new or worse when compared to baseline symptoms before first acute COVID-19. We used two binary outcomes to identify if a participant experienced (1) ≥ 1 new symptom, and (2) ≥ 1 worsening symptom from baseline. These two post-COVID sequelae outcomes were not mutually exclusive.

Secondary outcomes: patient-reported outcomes

For the secondary study objective, we compared the patient-reported outcomes (PROs) between participants who experienced post-COVID sequelae and those who did not. For all participants, we used the patient-reported outcomes measurement information system (PROMIS) to quantify the status of physical function, cognitive function, and depression. PROMIS instruments are standardized PROs of functional outcomes validated across health and diseases. PROMIS T-scores from the United States general population have a normal distribution with a mean score of 50 and a standard deviation of 10, with higher T-scores indicating greater levels of the measured attributes (e.g., physical function, cognitive function, depression).²⁰ For pwMS, we further assessed the neurological disability using the multiple sclerosis rating scale-revised (MSRS-R) and patient determined disease steps (PDDS). MSRS-R is a sum of scores across eight domains, including walking, upper limb function, vision, speaking, swallowing, cognitive symptoms, sensory symptoms, and bowel and bladder function, each scored from 0 to 4, with 0 indicating a normal status and 4 indicating a total loss of function. The PDDS is an ordinal scale from 0 to 8, with 0 indicating no impairment and 8 indicating bed-bound status. While

MSRS-R and PDDS are correlated, the former assesses the global neurological symptom burden and provides more granular subscales while the latter better defines the extent of the gait impairment.

Statistical Analysis

We included survey participants in the analysis if they completed the sections on COVID-19 infection status (Yes or No) and neurologist-confirmed diagnosis (MSRD or Controls). Participant characteristics are presented as mean (SD), median (IQR), or frequencies and proportions. We compared the characteristics of pwMSRD with controls using the Wilcoxon rank sum test and Fisher's exact test for continuous and categorical variables, respectively.

We classified individual symptoms starting 1 month after the initial acute COVID-19 episode as none, new onset (i.e., no such symptom pre-COVID), or worsening (i.e., the symptom worsened when compared to the pre-COVID baseline). For each symptom, we used multivariable logistic regression to separately compare the risk of developing a new symptom and worsening symptom between pwMSRD and controls. A Bonferroni correction was applied due to multiple testing of a total of 71 symptoms. A p -value $< .05/71 = .0007$ was considered statistically significant.

We then integrated individual symptoms into two composite outcomes: having ≥ 1 new symptom and having ≥ 1 worsening symptom from baseline. Multivariable logistic regression models assessed whether pwMSRD were more susceptible to developing any new symptom or experiencing any worsening symptom than controls., adjusting for age, sex, race and ethnicity, and CCI category. We hypothesized that severity of acute COVID-19 could mediate the association between neuroimmunological diagnosis status (MSRD versus controls) and post-COVID sequelae, as prior studies have reported MS related factors could increase the risk of acute COVID-19 severity, which could be a significant predictor of post-COVID condition development.^{21,22} Hence, we investigated the hypothesis by a regression-based mediation approach (eMethod).²³

Linear regression models evaluated the association between post-COVID sequelae and PROs. We included the condition of developing ≥ 1 new symptom, the condition of developing ≥ 1 worsening symptom, and the interaction between the two conditions as predictors. The interaction term tested whether the coexistence of new and worsening symptoms had worse effects on outcomes than the sum

of the individual effects of either condition. We assessed the physical function, cognition, and depression as measured by PROMIS separately in pwMSRD and controls. We also assessed MS disability as measured by MSRS-R and PDDS among pwMS, accounting for age, sex, race and ethnicity, comorbidity, acute infection severity, subtype, and DMT efficacy. Additionally, we investigated if infection waves and vaccine status could alter the magnitude of the association between post-COVID sequelae and PROs. We performed moderation analyses by subgrouping on vaccine status (i.e., not fully vaccinated: vaccine dose <3 vs. fully vaccinated: vaccine dose ≥3) and infection waves (i.e., pre-Omicron: infected before January 1, 2022 vs. Omicron: infected after January 1, 2022).

Besides the correction for multiple testing of 71 symptoms, p-values < .05 were considered statistically significant. R (version 4.2.1) was used for statistical analyses.

Data and Code Availability

Code for analyses and figures is available at <<https://github.com/xialab2016/Post-COVID-Sequelae>>. De-identified data are available upon request to the corresponding author and with permission from the participating institutions.

Results

Participants

This study included 969 pwMSRD and 1,003 control participants of the MSReCov who responded to a new web questionnaire (**Table 1**). Compared to controls, pwMSRD had older mean age (51.8 years [SD 12.1] vs 45.2 years [SD 10.3], $p < .001$), similar proportion of women (799 [82.5%] vs 796 [79.4%], $p = 0.18$), lower proportion of non-Hispanic White (821 [84.7%] vs 927 [92.4%], $p < .001$), similar mean BMI (33.3 [SD 8.66] vs 33.2 [8.73], $p = 0.75$), and greater proportion of moderate to severe comorbidity burden. 97% of pwMSRD had a diagnosis of MS (74.4% RRMS), while 3% had a related disorder. Among the 1,227 participants with acute COVID-19, 500 (40.1%) experienced the infection before Jan 1, 2022 and 529 (43.0%) reported moderate to very severe acute COVID-19. Compared to the controls, pwMSRD had a higher rate of severe acute COVID-19 (4.7% vs 0.7%; $p < .01$). Vaccination history was similar between the MSRD and control groups (25.9% vs. 26.2% not fully vaccinated; $p = .25$).

Prevalence of post-COVID sequelae

Acute COVID-19 rates among the 613 pwMSRD and 614 controls were comparable (63.3% vs 61.2%; $p=.36$). For each sustained post-COVID symptom, we provided details of the frequency of status (i.e., none, new onset, worsening) (**eTable 1**). Overall, 669 (54.5%) participants developed ≥ 1 new symptom, while 537 (43.8%) experienced ≥ 1 symptom worsening from baseline. A similar proportion of pwMSRD had a new and a worsening symptom (60.5% vs 58.6%; $p=.49$; **Figure 2A**). In contrast, the proportion of controls who developed ≥ 1 new symptom was significantly greater than the proportion of controls who developed ≥ 1 worsening symptom from baseline (48.5% vs 29.0%; $p<.01$; **Figure 2A**).

Risk of post-COVID sequelae

Developing new symptoms after acute COVID-19

Overall, the seven most common new post-COVID symptoms (in descending frequency) were dry cough, brain fog, change or loss of taste, fatigue, change or loss of smell, cough with mucus, and shortness of breath (% range: 11.0-13.0; **eTable 2**). Compared to controls, pwMSRD had higher odds of experiencing new symptom of wheezing, cough with mucus, nausea, sneezing, loss of appetite, change or loss of taste, and change or loss of smell (aOR range: 2.10-3.59, all with $p<.0007$), and lower odds for new symptoms of brain fog (aOR=0.52, $p<.0007$) and fatigue (aOR=0.23, $p<.0007$) (**Figure 2B, eTable 2**). After adjusting for age, sex, race and ethnicity, and comorbidity, MSRD was associated with 55% higher odds of having ≥ 1 new symptom as compared to controls (aOR=1.55; 95%CI 1.22-1.98; **Table 2**). Post-hoc evaluation of covariates found woman gender (aOR=1.47, $p=.02$), not non-Hispanic White race (aOR=1.48, $p=.04$), and severe comorbidity (aOR=3.68, $p=.03$) each having higher odds of developing a new post-COVID symptom (**Table 2**). In mediation analyses, the proportion of the association between MSRD diagnosis and having a new post-COVID symptom as mediated by acute COVID-19 severity was 27.9% (**Table 2**), pointing to acute COVID-19 severity as a potentially intermediate variable on the pathway between MSRD diagnosis and the occurrence of sustained new symptoms after acute COVID-19.

Worsening symptoms from pre-COVID baseline

Among all participants, the most common symptoms (frequency >10%) that worsened after acute COVID-19 were fatigue, muscle aches, brain fog, and difficulty concentrating (**eTable 3**). PwMSRD had higher odds of worsening neuralgia, dizziness, weakness, change in sensation, muscle spasms, speech and language issues, bone aches, fatigue, brain fog, difficulty of concentrating, vision problems, memory issues, runny nose, muscle aches, chills, bladder control issues, depression, exercise intolerance, joint pain, insomnia, and anxiety (aOR range: 2.51-47.72, all with $p < .0007$; **Figure 2B, eTable 3**). Compared to controls, pwMSRD had higher odds of having ≥ 1 worsening baseline symptom (aOR=3.39; 95%CI 2.64-4.36; **Table 2**). Post-hoc evaluation of covariates identified again women and severe comorbidity with higher odds of experiencing a worsening symptom from baseline (**Table 2**). Acute COVID-19 severity mediated 22.7% of the association between MSRD status and experiencing worsening symptoms (from pre-COVID baseline) (**Table 2**).

Risk factors of post-COVID sequelae in pwMS

Among pwMS 361 (60.7%) developed ≥ 1 new symptom and 348 (58.5%) had ≥ 1 worsening from baseline symptom (**eTable 4**). Women gender was associated with elevated odds of developing new and worsening symptoms after acute COVID-19, while other demographics (age, race and ethnicity, and comorbidities) and MS disease characteristics (subtype, DMT efficacy, and pre-COVID PDDS) were not (**eTable 5**).

Associations between post-COVID sequelae and PROs

Physical function, cognition, and depression

Among the 1,133 out of 1,227 participants with acute COVID-19 who completed at least one of the PROMIS domains, 403 (35.6%) reported no residual symptoms, 224 (19.8%) developed only new symptoms, 95 (8.4%) experienced only worsening symptoms (from baseline), and 411 (36.3%) had both new and worsening symptoms. In both MSRD and control groups, the fitted T-scores showed incremental worsening of these generalizable patient-reported outcomes from having no symptoms to having both new and worsening symptoms, after adjusting for age, sex, race and ethnicity, comorbidity, and severity of acute infection (**Figure 3A-B, eTable 6**). In family-wise comparison, having a worsening

symptom from baseline was associated with worse PROs of cognition, depression and physical function, regardless of the presence or absence of new symptoms (**Figure 3A-B**).

MS-related disability

Among the 595 pwMS who completed MSRS-R and PDDS, we examined the association between post-COVID sequelae and patient-reported outcomes of MS disability. There was an incremental worsening from having no symptoms to having both new and worsening symptoms (**Figure 3B, eTable 6**). Having a symptom worsening from baseline was associated with higher scores of MSRS-R (beta=2.7, $p<.01$) and PDDS (beta=0.44, $p=.02$), indicating worse MS disability. There was no additive interaction effect between new and worsening symptoms on MSRS-R (**eTable 6**). Having one additional post-COVID symptom was associated with 0.25 ($p<.01$) higher MSRS-R and 0.04 ($p<.01$) higher PDDS score.

In subgroup analyses of pwMS based on vaccination status and the pandemic wave (i.e., the known predominant SARS-CoV-2 strains), we found consistent associations between post-COVID sequelae and worse MSRS-R scores (global symptom burden) across all four subgroups (i.e., not fully vaccinated, fully vaccinated, pre-Omicron, and Omicron) (**eFigure 1**). The not fully vaccinated subgroup exhibited a stronger magnitude of association than the fully vaccinated while the pre-Omicron period exhibited a stronger magnitude of association than the Omicron period (**eFigure 1**), suggesting the potential moderation effects of vaccination and SARS-CoV-2 strains during later pandemic wave on the association between post-COVID sequelae and MS disability.

Discussion

In this survey study of pwMSRD and controls (without neuroinflammatory disorders) from a multi-center collaborative cohort, we separately evaluated new onset and worsening symptoms after acute COVID-19 using a comprehensive survey of post-COVID sequelae and assessed the association between post-COVID sequelae and patient outcomes. Compared to controls, pwMSRD were more likely to develop new symptoms involving the pulmonary and HEENT (head, eyes, ears, nose, and throat) systems, and experience worsening systemic, musculoskeletal, and neurological symptoms from the pre-COVID baseline. Notably, pwMSRD had a 1.55-fold and a 3.39-fold greater odds of having

≥ 1 new and ≥ 1 worsening symptom than controls, respectively. Acute COVID-19 severity mediated a substantial portion ($>20\%$) of the associations between MSRD diagnosis status and post-COVID sequelae. In pwMS, post-COVID sequelae was associated with worse neurological disability, the magnitude of which was moderated by pandemic wave (Omicron vs pre-Omicron) and vaccine status (fully vaccinated vs not). In both pwMSRD and controls, having worsening symptoms from baseline was associated with worse patient-reported physical function, cognitive function, and depression when compared to having new onset symptoms.

To our knowledge, this is among the first large multi-center studies in the United States that directly compared the long-term post-COVID symptoms between pwMSRD and controls and found pwMSRD having higher odds of post-COVID sequelae than the general population. Large-scale case-controlled studies of post-COVID sequelae in MSRD are limited. The main study finding supports an earlier study using the United Kingdom MS Register that reported up to 30% of pwMS experiencing prolonged symptoms ≥ 4 weeks after acute COVID-19 despite differences in the study design.⁸

This study has several strengths. First, the multi-center study includes a large representative sample of pwMSRD and controls from the Northeastern and Mid-Atlantic region of the US. The survey response rate was greater than 90%, suggesting a low selection bias and high representativeness. Second, simultaneous assessment of the control group facilitates future comparisons across studies, essential for informing clinical guidance.²⁴ Third, the post-COVID sequelae survey that systematically assessed the presence of a wide range of potential symptoms was compiled and validated by a group of experienced neuroimmunology clinicians. Crucially, the survey systematically assessed the differences in the reporting of new symptoms versus worsening symptoms (from the pre-COVID baseline)³ between pwMSRD and controls, enabling the comparison of potentially different manifestations of post-COVID sequelae between groups.

This study has several interesting findings. First, the most frequent worsening symptoms from baseline experienced by pwMSRD were neurological manifestations (e.g., brain fog, fatigue, neuralgia, dizziness, weakness, and change in sensation, etc). The finding was consistent with the previous estimate that two-thirds of people with neurological diseases had persistent neurologic symptoms at 6

months post infection.²⁵ Acute or chronic systemic infections can trigger symptomatic exacerbations in MSRD.²⁶ Potential mechanisms of exacerbation include systemic inflammatory response across organs (e.g., the central nervous system, CNS) in the setting of superantigens as well as molecular mimicry, epitope spreading, bystander activation in the presence of cryptic antigens.²⁷ Second, pwMSRD had significantly higher odds of developing worsening musculoskeletal symptoms, including muscle spasms, bone aches, muscle aches, and joint pain. This finding could be explained by the secondary musculoskeletal complications from MSRD and by the co-occurrence between MSRD and various rheumatological disorders affecting the musculoskeletal system. Third, while fatigue and brain fog are common worsening symptoms in pwMSRD, they are new onset symptoms in controls, the latter finding consistent with prior reports.²⁸ Finally, pwMSRD had higher odds of developing new symptoms involving the pulmonary and HEENT system, raising concerns of increased comorbidity burden that could worsen disability progression.

Indeed, we found that post-COVID sequelae was associated with worse patient-reported disability status (based on validated MS-specific PROs of MSRS-R and PDDS scores and generalizable PROs of PROMIS scores) in pwMSRD and likewise in controls (based on generalizable PROs). This finding is consistent with a prior report of the greater rater-assessed disability status in pwMS (based on Expanded Disability Status Scale) associated with acute COVID-19 occurrence and severity.²⁹ Notably, our study further demonstrates consistently the greatest disability status as assessed by multiple PROs in pwMSRD who had at least one new and at least one worsening post-COVID symptom, followed by those with at least one worsening post-COVID symptom, and by those with at least one new post-COVID symptom. These findings raise a potentially testable hypothesis whether post-COVID sequelae in pwMS may accelerate long-term disability progression, which warrants future longitudinal investigations.

Our study adds knowledge regarding the contributions of acute COVID-19 severity, pandemic wave (i.e., predominant SARS-CoV-2 variants), and COVID-19 vaccination status towards post-COVID sequelae in pwMSRD. Prior studies reported acute COVID-19 severity (e.g., hospitalization requirement) as a predictor of post-COVID sequelae in the general population.³⁰ Our study quantified

the extent (>20%) to which acute COVID severity mediated the development of post-COVID sequelae. Prior studies reported varying post-COVID sequelae based on SARS-CoV-2 variant and vaccination in the general population,^{31,32} but little is known regarding the effect of SARS-CoV-2 variant and vaccination on disability in pwMSRD. Our study found pandemic wave (i.e., later stage dominated by the Omicron variant) and full vaccination moderated the adverse effect of post-COVID sequelae on MS-related disability, highlighting the importance of closer monitoring of pwMSRD who developed acute COVID-19 during the pre-Omicron period and without full vaccination.

Our study also has several limitations. First, the retrospective survey on post-COVID sequelae may lead to recall bias and response bias due to the self-reported survey data on acute COVID-19, post-COVID sequelae symptoms, and health outcomes. However, both recall bias and response bias would have resulted in non-differential misclassification between pwMSRD and controls. Second, this study could not establish causal conclusions due to the cross-sectional design. Although this does not affect the study validity, one needs to interpret the findings with caution. Finally, most participants were self-reported non-Hispanic White individuals. Future validation studies will need to increase the racial and ethnic representation.

In summary, pwMSRD and controls experienced differential clinical presentation of new and worsening post-COVID symptoms. When compared to controls, pwMSRD had higher odds of developing post-COVID sequelae, which was associated with a broad range of worse patient-reported outcomes. Our study provides real-world evidence of long-term consequences after acute COVID-19 in the vulnerable population of MSRD and highlights the importance of careful clinical evaluation and management of post-COVID sequelae in the post-pandemic era.

Acknowledgment

We thank all research participants for their efforts.

References

1. Louapre C, Collongues N, Stankoff B, et al. Clinical Characteristics and Outcomes in Patients With Coronavirus Disease 2019 and Multiple Sclerosis. *JAMA Neurology*. 2020;77(9):1079-1088. doi:10.1001/jamaneurol.2020.2581
2. Han Q, Zheng B, Daines L, Sheikh A. Long-Term Sequelae of COVID-19: A Systematic Review and Meta-Analysis of One-Year Follow-Up Studies on Post-COVID Symptoms. *Pathogens*. 2022;11(2):269. doi:10.3390/pathogens11020269
3. Davis HE, Assaf GS, McCorkell L, et al. Characterizing long COVID in an international cohort: 7 months of symptoms and their impact. *eClinicalMedicine*. 2021;38. doi:10.1016/j.eclinm.2021.101019
4. Thompson EJ, Williams DM, Walker AJ, et al. Long COVID burden and risk factors in 10 UK longitudinal studies and electronic health records. *Nat Commun*. 2022;13(1):3528. doi:10.1038/s41467-022-30836-0
5. Davis HE, McCorkell L, Vogel JM, Topol EJ. Long COVID: major findings, mechanisms and recommendations. *Nat Rev Microbiol*. 2023;21(3):133-146. doi:10.1038/s41579-022-00846-2
6. Prosperini L, Arrambide G, Celius EG, et al. COVID-19 and multiple sclerosis: challenges and lessons for patient care. *The Lancet Regional Health – Europe*. 2024;44. doi:10.1016/j.lanepe.2024.100979
7. Conway SE, Healy BC, Zurawski J, et al. COVID-19 severity is associated with worsened neurological outcomes in multiple sclerosis and related disorders. *Multiple Sclerosis and Related Disorders*. 2022;63. doi:10.1016/j.msard.2022.103946
8. Garjani A, Middleton RM, Nicholas R, Evangelou N. Recovery From COVID-19 in Multiple Sclerosis: A Prospective and Longitudinal Cohort Study of the United Kingdom Multiple Sclerosis Register. *Neurology - Neuroimmunology Neuroinflammation*. 2022;9(1). doi:10.1212/NXI.0000000000001118
9. Czarnowska A, Kapica-Topczewska K, Zajkowska O, et al. Symptoms after COVID-19 Infection in Individuals with Multiple Sclerosis in Poland. *Journal of Clinical Medicine*. 2021;10(22):5225. doi:10.3390/jcm10225225
10. Boekel L, Atiqi S, Leeuw M, et al. Post-COVID condition in patients with inflammatory rheumatic diseases: a prospective cohort study in the Netherlands. *The Lancet Rheumatology*. 2023;5(7):e375-e385. doi:10.1016/S2665-9913(23)00127-3
11. Xu E, Xie Y, Al-Aly Z. Long-term neurologic outcomes of COVID-19. *Nat Med*. 2022;28(11):2406-2415. doi:10.1038/s41591-022-02001-z
12. Bsteh G, Assar H, Gradl C, et al. Long-term outcome after COVID-19 infection in multiple sclerosis: A nation-wide multicenter matched-control study. *European Journal of Neurology*. 2022;29(10):3050-3060. doi:10.1111/ene.15477

13. Barzegar M, Mirmosayyeb O, Gajarzadeh M, et al. COVID-19 Among Patients With Multiple Sclerosis. *Neurology Neuroimmunology & Neuroinflammation*. 2021;8(4):e1001. doi:10.1212/NXI.0000000000001001
14. Jakimovski D, Kavak KS, Longbrake EE, et al. Impact of resilience, social support, and personality traits in patients with neuroinflammatory diseases during the COVID-19 pandemic. *Multiple Sclerosis and Related Disorders*. 2022;68:104235. doi:10.1016/j.msard.2022.104235
15. Riley C, Venkatesh S, Dhand A, et al. Impact of the COVID-19 Pandemic on the Personal Networks and Neurological Outcomes of People With Multiple Sclerosis: Cross-Sectional and Longitudinal Case-Control Study. *JMIR Public Health and Surveillance*. 2024;10(1):e45429. doi:10.2196/45429
16. Worsening physical functioning in patients with neuroinflammatory disease during the COVID-19 pandemic - ClinicalKey. Accessed December 6, 2024. <https://www.clinicalkey.com/#!/content/journal/1-s2.0-S2211034821007483>
17. Vaccination Against SARS-CoV-2 in Neuroinflammatory Disease: Early Safety/Tolerability Data - ClinicalKey. Accessed December 6, 2024. <https://www.clinicalkey.com/#!/content/journal/1-s2.0-S2211034821006994>
18. Levin SN, Venkatesh S, Nelson KE, et al. Manifestations and impact of the COVID-19 pandemic in neuroinflammatory diseases. *Annals of Clinical and Translational Neurology*. 2021;8(4):918-928. doi:10.1002/acn3.51314
19. CDC. COVID-19 and Your Health. Centers for Disease Control and Prevention. February 11, 2020. Accessed November 5, 2023. <https://www.cdc.gov/coronavirus/2019-ncov/symptoms-testing/symptoms.html>
20. PROMIS. Accessed August 1, 2023. <https://www.healthmeasures.net/score-and-interpret/interpret-scores/promis>
21. Chaudhry F, Bulka H, Rathnam AS, et al. COVID-19 in multiple sclerosis patients and risk factors for severe infection. *Journal of the Neurological Sciences*. 2020;418:117147. doi:10.1016/j.jns.2020.117147
22. Sormani MP, Schiavetti I, Carmisciano L, et al. COVID-19 Severity in Multiple Sclerosis. *Neurology Neuroimmunology & Neuroinflammation*. 2022;9(1):e1105. doi:10.1212/NXI.0000000000001105
23. Rijnhart JJM, Twisk JWR, Eekhout I, Heymans MW. Comparison of logistic-regression based methods for simple mediation analysis with a dichotomous outcome variable. *BMC Medical Research Methodology*. 2019;19(1):19. doi:10.1186/s12874-018-0654-z
24. Imrey PB. Limitations of Meta-analyses of Studies With High Heterogeneity. *JAMA Network Open*. 2020;3(1):e1919325. doi:10.1001/jamanetworkopen.2019.19325
25. Shanley JE, Valenciano AF, Timmons G, et al. Longitudinal evaluation of neurologic-post acute sequelae SARS-CoV-2 infection symptoms. *Annals of Clinical and Translational Neurology*. 2022;9(7):995-1010. doi:10.1002/acn3.51578

26. Marrodan M, Alessandro L, Farez MF, Correale J. The role of infections in multiple sclerosis. *Mult Scler*. 2019;25(7):891-901. doi:10.1177/1352458518823940
27. Muñoz-Jurado A, Escribano BM, Agüera E, Caballero-Villarraso J, Galván A, Túnez I. SARS-CoV-2 infection in multiple sclerosis patients: interaction with treatments, adjuvant therapies, and vaccines against COVID-19. *J Neurol*. 2022;269(9):4581-4603. doi:10.1007/s00415-022-11237-1
28. Chasco EE, Dukes K, Jones D, Comellas AP, Hoffman RM, Garg A. Brain Fog and Fatigue following COVID-19 Infection: An Exploratory Study of Patient Experiences of Long COVID. *Int J Environ Res Public Health*. 2022;19(23):15499. doi:10.3390/ijerph192315499
29. Peeters G, Van Remoortel A, Nagels G, Van Schependom J, D'haeseleer M. Occurrence and Severity of Coronavirus Disease 2019 Are Associated With Clinical Disability Worsening in Patients With Multiple Sclerosis. *Neurol Neuroimmunol Neuroinflamm*. 2023;10(3):e200089. doi:10.1212/NXI.0000000000200089
30. Bahmer T, Borzikowsky C, Lieb W, et al. Severity, predictors and clinical correlates of Post-COVID syndrome (PCS) in Germany: A prospective, multi-centre, population-based cohort study. *eClinicalMedicine*. 2022;51. doi:10.1016/j.eclinm.2022.101549
31. Sudre CH, Murray B, Varsavsky T, et al. Attributes and predictors of long COVID. *Nat Med*. 2021;27(4):626-631. doi:10.1038/s41591-021-01292-y
32. Mumtaz A, Sheikh AAE, Khan AM, et al. COVID-19 Vaccine and Long COVID: A Scoping Review. *Life*. 2022;12(7):1066. doi:10.3390/life12071066

Tables

Table 1. Participant characteristics

		Overall	MSRD	Control	p-value ^e
N		1972	969	1003	
Age, years; mean (SD)		48.4 (11.7)	51.8 (12.1)	45.2 (10.3)	<.001
Sex ^a ; n(%)	Women	1595 (80.9%)	799 (82.5%)	796 (79.4%)	.183
	Men	370 (18.8%)	166 (17.1%)	204 (20.3%)	
Race; n(%)	White	1846 (93.6%)	883 (91.1%)	963 (96.0%)	<.001
	Black and African American	63 (3.2%)	48 (5.0%)	15 (1.5%)	
	Asian	7 (0.4%)	3 (0.3%)	4 (0.4%)	
	Multi-racial	38 (1.9%)	22 (2.3%)	16 (1.6%)	
	Other	18 (0.9%)	13 (1.3%)	5 (0.5%)	
Ethnicity; n(%)	Hispanic	74 (3.8%)	41 (4.2%)	33 (3.3%)	<.001
	Non-Hispanic	1845 (93.6%)	888 (91.6%)	957 (95.4%)	
	Other	53 (2.7%)	40 (4.1%)	13 (1.3%)	
Race and ethnicity; n(%)	Non-Hispanic White	1748 (88.6%)	821 (84.7%)	927 (92.4%)	<.001

	Not non-Hispanic White	224 (11.4%)	148 (15.3%)	76 (7.6%)	
BMI, kg/m ² ; mean(SD)		33.3 (8.69)	33.3 (8.66)	33.2 (8.73)	.753
CCI category; n(%)	None (CCI=0)	1091 (55.3%)	444 (45.8%)	647 (64.5%)	<.001
	Mild (1≤CCI≤2)	605 (30.7%)	305 (31.5%)	300 (29.9%)	
	Moderate (3≤CCI≤5)	235 (11.9%)	188 (19.4%)	47 (4.7%)	
	Severe (CCI≥6)	41 (2.1%)	32 (3.3%)	9 (0.9%)	
Neurologic disorder; n(%)	MOGAD	N/A	2 (0.2%)	N/A	N/A
	MS	N/A	940 (97.0%)	N/A	
	NID	N/A	18 (1.9%)	N/A	
	NMOSD	N/A	9 (0.9%)	N/A	
MS subtype ^b ; n(%)	CIS	N/A	12 (1.3%)	N/A	N/A
	RIS	N/A	2 (0.2%)	N/A	
	RRMS	N/A	700 (74.4%)	N/A	

	SPMS	N/A	105 (11.3%)	N/A	
	PPMS	N/A	65 (6.9%)	N/A	
DMT efficacy; n(%) ^c	None	N/A	157 (16.7%)	N/A	N/A
	Standard	N/A	330 (35.1%)	N/A	
	High	N/A	440 (46.8%)	N/A	
Acute COVID-19; n(%)	Present	1227 (62.2%)	613 (63.3%)	614 (61.2%)	.353
	Absent	745 (37.8%)	356 (36.7%)	389 (38.8%)	
Acute COVID-19 severity; n(%)	No symptoms	45 (3.8%)	23 (3.6%)	22 (4.1%)	<.001
	Mild	653 (53.2%)	290 (47.6%)	363 (58.8%)	
	Moderate	495 (40.3%)	271 (44.2%)	224 (36.5%)	
	Severe and very severe	34 (2.7%)	29 (4.7%)	5 (0.7%)	
COVID-19 wave; n(%)	Before Jan 1, 2022	500 (40.1%)	273 (44.5%)	227 (37.0%)	.008
	After Jan 1, 2022	727 (59.9%)	340 (55.5%)	387 (63.0%)	
Vaccine dose ^d ; n(%)	<3	513 (26.1%)	250 (25.9%)	263 (26.2%)	.245
	≥3	1456 (73.9%)	716 (74.1%)	740 (73.8%)	

Abbreviations: BMI=body mass index. CIS=clinical isolated syndrome. CCI=Charlson comorbidity index. DMT=disease-modifying therapy. MOGAD=myelin oligodendrocyte glycoprotein antibody-associated disease. MSRD=multiple sclerosis and related disorders. MS=multiple sclerosis. NID=neuroimmunological disorders. NMOSD=neuromyelitis optica spectrum disorder. RRMS=relapse remitting MS. PPMS=primary progressive MS. SPMS=secondary progressive MS.

Note:

^aGender was not reported for 3 controls and 4 MSRDs.

^bMS subtype was unknown for 56 MS patients.

^cDMT was missing for 13 MS patients.

^dVaccine dose was unknown for 3 MSRDs.

^ep-value of Wilcoxon rank sum test for continuous variables and Fisher's exact test for categorical variables.

Table 2. Associations between participant’s neuroimmunological diagnosis and post-COVID sequelae

		≥1 new symptom (n=669)		≥1 worsening symptom (n=537)	
		aOR (95% CI)	p-value	aOR (95% CI)	p-value
^b Logistic regression: is neuroimmunological diagnosis associated with post-COVID sequelae?					
MSRD status	MSRD	1.55 (1.22-1.98)	<.01	3.39 (2.64-4.36)	<0.01
	Controls	1 (ref)		1 (ref)	
Age, years		1.00 (0.98-1.01)	.74	0.99 (0.98-1.01)	.46
Sex ^a	Women	1.47 (1.08-2.00)	.02	1.72 (1.22-2.44)	<0.01
	Men	1 (ref)		1 (ref)	
Race and ethnicity	Not non-Hispanic White	1.48 (1.02-2.16)	.04	1.47 (1.00-2.16)	.05
	Non-Hispanic White	1 (ref)		1 (ref)	
CCI category	Severe comorbidity	3.68 (1.26-13.45)	.03	3.20 (1.15-9.91)	.03
	Moderate comorbidity	1.14 (0.67-1.94)	.64	1.19 (0.68-2.08)	.55
	Mild comorbidity	1.12 (0.81-1.55)	.50	1.14 (0.81-1.60)	.47
	No comorbidity	1 (ref)		1 (ref)	

^c Mediation analysis: Is acute COVID-19 severity a mediator?					
Total effect	MSRD	1.55 (1.22-1.98)	<.01	3.39 (2.64-4.36)	<.01
	Controls	1 (ref)		1 (ref)	
Direct effect	MSRD	1.37 (1.07-1.76)	.01	2.56 (1.97-3.33)	<.01
	Controls	1 (ref)		1 (ref)	
Indirect effect	MSRD	1.13 (0.70-1.84)	.62	1.32 (0.79-2.21)	.28
	Controls	1 (ref)		1 (ref)	

Note: Data are ORs (95%CIs) and p-values from the Wald test. Independent variables of the direct effect model are MSRD status, age, sex, race and ethnicity, CCI, and acute severity. Indirect effect was calculated by subtracting direct effect from total effect. The proportion of the association between MSRD status and post-COVID sequelae outcomes mediated by acute COVID-19 severity was 27.9% ($=\log(1.13)/\log(1.55)$) for ≥ 1 new symptom, and 22.7% ($=\log(1.32)/\log(3.39)$) for ≥ 1 worsening symptom (from baseline), suggesting acute severity as a mediator.

^a4 participants with unknown gender were excluded.

^bIn the logistic regression analysis, models were adjusted for age, sex, race and ethnicity, and CCI category.

^cIn the mediation analysis, independent variables of the total effect model are MSRD status, age, sex, race and ethnicity, and CCI.

Figure Legends

Figure 1. Study schematics of post-COVID sequelae in people with multiple sclerosis and related disorders. MSReCOV=Multiple Sclerosis Resilience to COVID-19. PROMIS=patient-reported outcomes measurement information system. PROs=patient-reported outcomes. MSRS-R=multiple sclerosis rating scale-revised. PDDS=patient-determined disease steps.

Figure 2. Post-COVID sequelae status in MSRDs and controls. **(A)**. Bar diagram of the number (N) and % of the post-COVID sequelae status in all participants (left panel), pwMSRD (middle panel), and controls (right panel): ≥ 1 new symptom (left bars) and ≥ 1 worsening symptom (right bars). The two statuses are not mutually exclusive. **(B)**. Estimated aORs and 95% CIs (gray bars) from multivariable logistic regression comparing new symptoms and worsening symptoms (from baseline) between MSRDs and controls. Symptoms in red reached statistical significance with Bonferroni correction. aOR=adjusted odds ratio. HEENT=head, eyes, ears, nose, and throat.

Figure 3. Adjusted PRO scores by post-COVID sequelae status in **(A)** controls and **(B)** MSRDs. The height of the bar depicts the fitted group mean and the error bar represents the 95%CI of the group mean. Regression models of PROMIS outcomes were adjusted for age, sex, race and ethnicity, comorbidity and severity of acute COVID-19. The regression models of MSRS-R and PDDS were adjusted for age, sex, race and ethnicity, comorbidity, severity of acute COVID-19, MS subtype and DMT. Familywise corrected p-values are used for multiple comparisons and are indicated with asterisks: * $p < .05$, ** $p < .01$, *** $p < .001$.

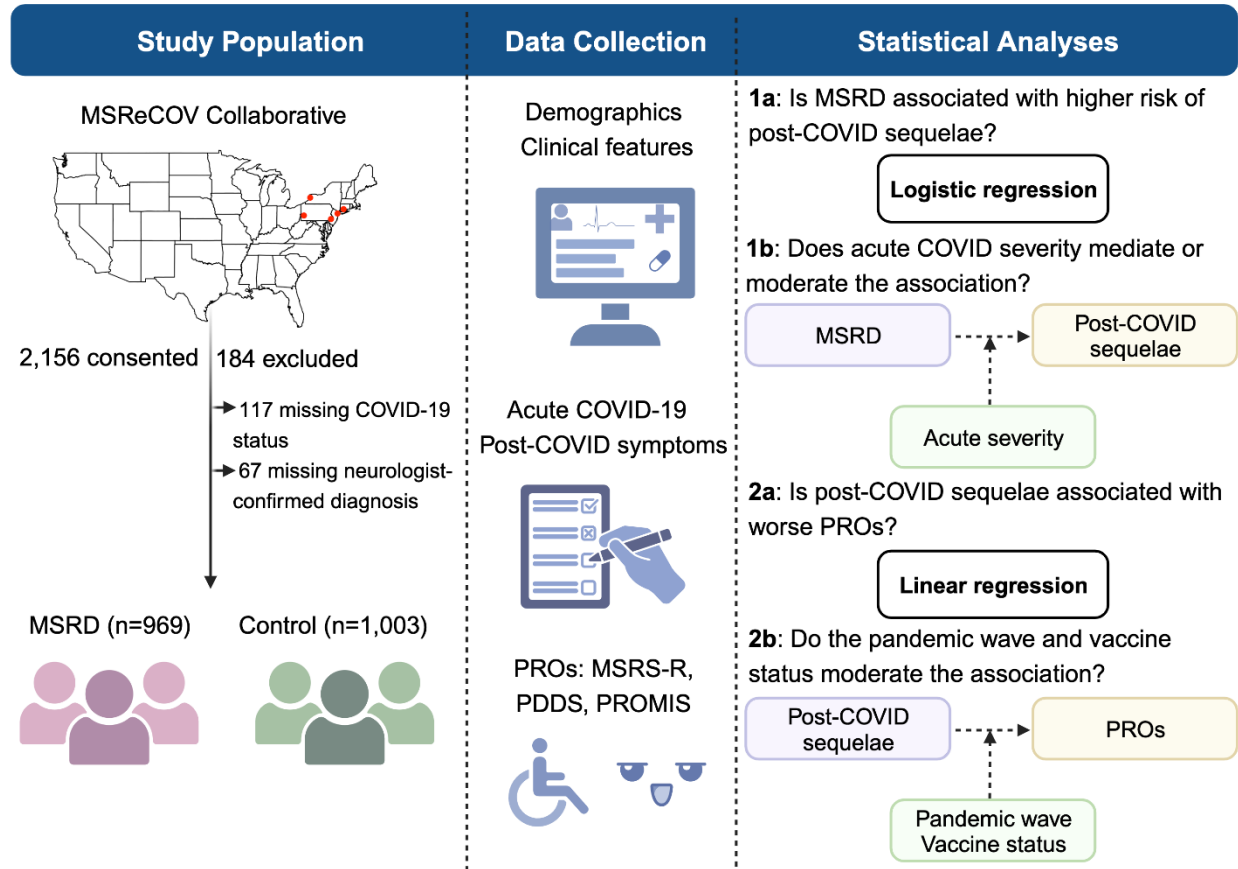
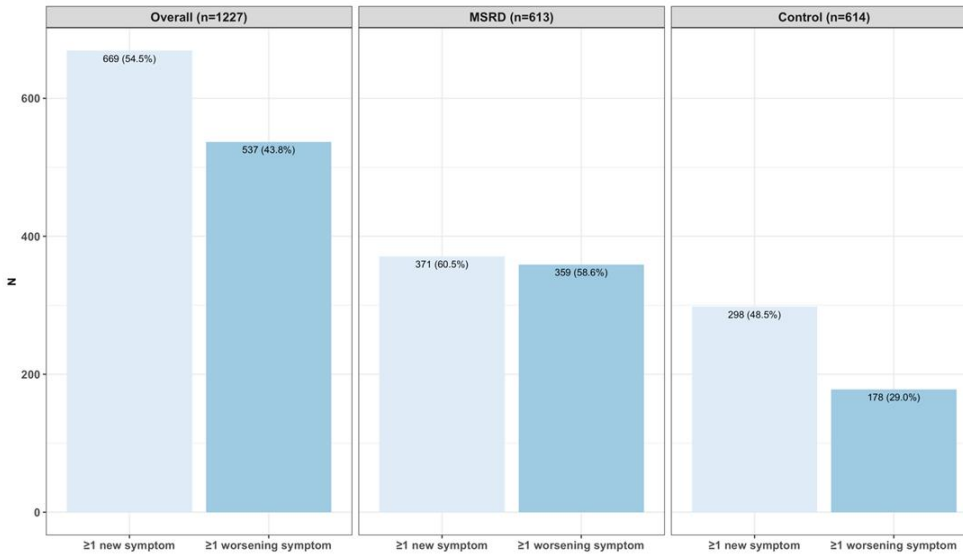


Figure 1. Study schematics of post-COVID sequelae in people with multiple sclerosis and related disorders. MSReCOV=Multiple Sclerosis Resilience to COVID-19. PROMIS=patient-reported outcomes measurement information system. PROs=patient-reported outcomes. MSRS-R=multiple sclerosis rating scale-revised. PDDS=patient-determined disease steps.

A



B



Figure 2. Post-COVID sequelae status in MSRDs and controls. **(A)**. Bar diagram of the number (N) and % of the post-COVID sequelae status in all participants (left panel), pwMSRD (middle panel), and controls (right panel): ≥ 1 new symptom (left bars) and ≥ 1 worsening symptom (right bars). The two statuses are not mutually exclusive. **(B)**. Estimated aORs and 95% CIs (gray bars) from multivariable logistic regression comparing new symptoms and worsening symptoms (from baseline) between MSRDs and controls. Symptoms in red reached statistical significance with Bonferroni correction. aOR=adjusted odds ratio. HEENT=head, eyes, ears, nose, and throat.

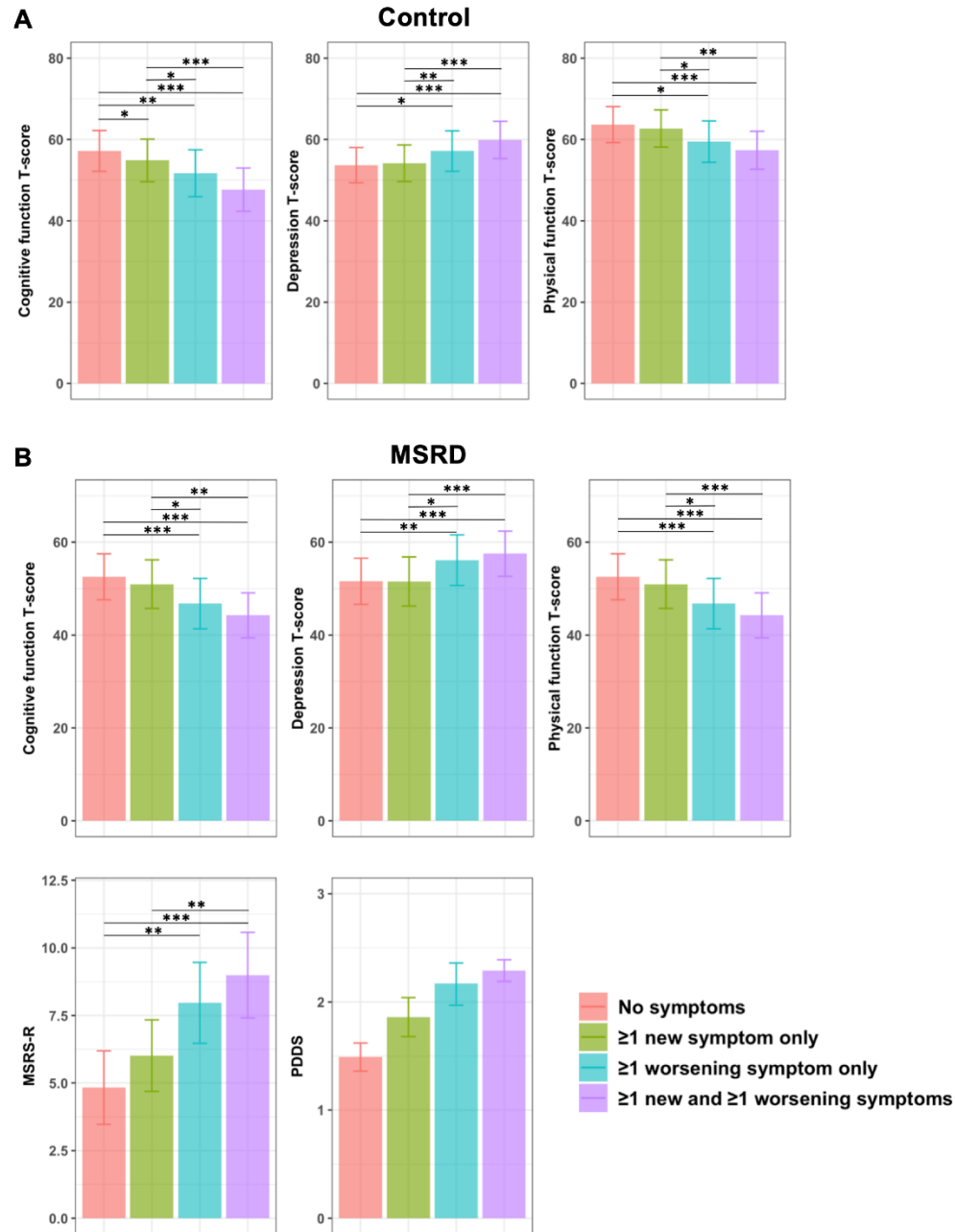


Figure 3. Adjusted PRO scores by post-COVID sequelae status in **(A)** controls and **(B)** MSRDs.

The height of the bar depicts the fitted group mean and the error bar represents the 95%CI of the group mean. Regression models of PROMIS outcomes were adjusted for age, sex, race and ethnicity, comorbidity and severity of acute COVID-19. The regression models of MSRS-R and PDDS were adjusted for age, sex, race and ethnicity, comorbidity, severity of acute COVID-19,

MS subtype and DMT. Familywise corrected p-values are used for multiple comparisons and are indicated with asterisks: * $p < .05$, ** $p < .01$, *** $p < .001$.