

# Personalised interactive music systems for physical activity and exercise: A systematic review and exploratory meta-analysis

Andrew Danso<sup>1,2\*</sup>, Tiia Kekäläinen<sup>3</sup>, Friederike Koehler<sup>1,2</sup>, Keegan Knittle<sup>4</sup>,  
Patti Nijhuis<sup>1,2</sup>, Iballa Burunat<sup>1,2</sup>, Pedro Neto<sup>1,2</sup>, Anastasios Mavrolampados<sup>1,2</sup>,  
William M. Randall<sup>1,2</sup>, Niels Chr. Hansen<sup>1,2,5,6</sup>, Alessandro Ansani<sup>1,2</sup>, Timo  
Rantalainen<sup>4</sup>, Vinoo Alluri<sup>1,2,7</sup>, Martin Hartmann<sup>1,2</sup>, Rebecca S. Schaefer<sup>8,9,10</sup>,  
Johanna Ihalainen<sup>11</sup>, Rebekah Rousi<sup>12</sup>, Kat Agres<sup>13</sup>, Jennifer MacRitchie<sup>14</sup>, Petri  
Toiviainen<sup>1,2</sup>, Suvi Saarikallio<sup>1,2</sup>, Sebastien Chastin<sup>15,16</sup>, Geoff Luck<sup>1,2</sup>

<sup>1</sup> Centre of Excellence in Music, Mind, Body and Brain

<sup>2</sup> Department of Music, Arts and Culture Studies, University of Jyväskylä, Finland

<sup>3</sup> Laurea University of Applied Sciences, Vantaa, Finland

<sup>4</sup> Faculty of Sport and Health Sciences, University of Jyväskylä, Finland

<sup>5</sup> Royal Academy of Music Aarhus, Denmark

<sup>6</sup> Interacting Minds Centre, School of Culture and Society, Denmark

<sup>7</sup> Cognitive Science Lab, International Institute of Information Technology, Hyderabad, India

<sup>8</sup> Leiden University, Health, Medical & Neuropsychology unit, Institute for Psychology,  
Leiden, The Netherlands

<sup>9</sup> Leiden University, Leiden Institute for Brain and Cognition, Leiden, The Netherlands

<sup>10</sup> Leiden University, Academy of Creative and Performing Arts, Leiden, The Netherlands

<sup>11</sup> Finnish Institute of High Performance Sport KIHU, Jyväskylä, Finland

<sup>12</sup> School of Marketing and Communication, Communication Studies, University of Vaasa,

<sup>13</sup> School of Marketing and Communication, Communication Studies, University of Vaasa, Finland

**NOTE:** This preprint reports new research that has not been certified by peer review and should not be used to guide clinical practice.

<sup>13</sup> Centre for Music and Health, Yong Siew Toh Conservatory of Music, National University of Singapore, Singapore

<sup>14</sup> Department of Music & Healthy Lifespan Institute, University of Sheffield, United Kingdom

<sup>15</sup> Glasgow Caledonian University, School of Health and Life Sciences, United Kingdom

<sup>16</sup> Department of Movement and Sports Sciences, Ghent University Research for Aging Young, Ghent University, Ghent, Belgium

**\*Corresponding author**

**E-mail:** [andrew.a.dansoadu@jyu.fi](mailto:andrew.a.dansoadu@jyu.fi).

## 1 **Abstract**

2 Personalised Interactive Music Systems (PIMS) are emerging as promising devices for  
3 enhancing physical activity and exercise outcomes. By leveraging real-time data and adaptive  
4 technologies, PIMS align musical features, such as tempo and genre with users' physical  
5 activity patterns, including frequency and intensity, enhancing their overall experience. This  
6 systematic review and exploratory meta-analysis evaluates the effectiveness of PIMS across  
7 physical, psychophysical, and affective domains. Searches across nine databases identified 18  
8 eligible studies, of which six (comprising 17 intervention arms) contained sufficient data for  
9 meta-analysis. Random-effects meta-analyses and meta-regression were performed to assess  
10 outcomes for physical activity levels, physical exertion, ratings of perceived exertion (RPE),  
11 and affective valence. Results showed significant improvements in physical activity levels ( $g$   
12 = 0.49, CI [0.07, 0.91],  $p = .02$ ,  $k = 4$ ) and affective valence ( $g = 1.68$ , CI [0.15, 3.20],  $p =$   
13 .03,  $k = 4$ ), with faster music tempo identified as a significant moderator ( $p = 0.04$ ). No  
14 significant effects were observed for RPE ( $g = 0.72$ , CI [-0.14, 1.59],  $p = .10$ ,  $k = 3$ ) or  
15 physical exertion ( $g = 0.79$ , CI [-0.64, 2.10],  $p = .28$ ,  $k = 5$ ). Substantial heterogeneity and  
16 limited study quality indicate the need for more robust, randomised controlled trials to  
17 establish the efficacy of PIMS in diverse populations.

## 18 **Introduction**

19 Regular physical activity and exercise are fundamental to maintaining and enhancing overall  
20 health and well-being. Despite their recognised role in preventing and managing non-  
21 communicable diseases such as cardiovascular diseases, cancer, and diabetes, engagement in  
22 regular physical activity and exercise remains below the suboptimal level [1]. This deficiency  
23 undermines the potential for mental health benefits of physical exercise and its contributions  
24 to quality of life [2]. The World Health Organization (WHO) defines physical activity  
25 broadly, encompassing all forms of bodily movement generated by skeletal muscles that  
26 require energy expenditure, including activities such as walking, sports, and dance (WHO,  
27 2022), whereas exercise has been defined as “physical activity that is planned, structured,  
28 repetitive, and purposive, aiming to improve or maintain one or more components of physical  
29 fitness” [3:126–127]. However, the broad spectrum of activities categorised as physical  
30 activity and exercise often presents challenges in promoting consistent engagement and  
31 uptake including individual-level barriers such as motivation and time constraints [4]. Efforts  
32 to increase engagement to physical activity and exercise have faced significant challenges,  
33 frequently producing inconsistent outcomes as exemplified by interventions such as  
34 pedometer-based programs, which show variable effectiveness depending on factors  
35 including participant motivation, and engagement [4,5].

## 36 **The role of music in enhancing physical activity and exercise**

37 Music’s rhythmic properties have been shown to influence perceptions, ergonomics, and  
38 physiological markers associated with physical activity and exercise [6–10]. Available  
39 evidence suggests that auditory-motor coupling facilitates predictive synchronisation in  
40 physical activity and exercise settings, which can reduce perceived exertion and enhance  
41 endurance [11,12]. Additionally, when music aligns with individual preferences, such as

42 through self-selection, it may further increase motivation, improve affective states, induce  
43 distraction, and lower perceived effort during physical activities and exercise [7,11].  
44 The integration of music into exercise contexts can be further understood through theoretical  
45 frameworks such as the Affective-Reflective Theory (ART) and Dual-Mode Theory. ART  
46 emphasises the importance of momentary affective responses—such as pleasure or  
47 displeasure—in shaping future exercise behaviours [13,14]. These responses, encapsulated in  
48 the construct of "affective valence," reflect the intrinsic pleasantness or unpleasantness of  
49 emotional states that fluctuate based on internal and external stimuli. Conversely, Dual-Mode  
50 Theory posits that music's impact on affective responses is most pronounced at moderate  
51 exercise intensities, within a zone of response variability. This zone refers to the range of  
52 exercise intensity where affective responses—such as feelings of pleasure or displeasure—are  
53 particularly sensitive to individual differences (e.g., fitness level, psychological state) and  
54 contextual factors (e.g., music, environment, social setting). In this range, attentional focus  
55 and physiological cues mediate affective experiences [15]. While both theories acknowledge  
56 the importance of affective responses in exercise, Dual-Mode Theory provides a more  
57 nuanced perspective by emphasising intensity-dependent variability and its interaction with  
58 individual and contextual factors.

59 Extending the principles of ART and Dual-Mode Theory, [16] framework highlights how  
60 music's intrinsic properties—such as tempo, rhythm, and harmony—interact with personal  
61 and situational moderators, including exercise intensity and individual preferences, to  
62 influence affective and behavioural outcomes in exercise. Music operates through three  
63 primary mechanisms: regulating affective states, dissociating attention from exertional  
64 discomfort, and facilitating temporal prediction and rhythmic synchronisation. These  
65 mechanisms are most effective within the zone of response variability, where affective  
66 valence dynamically influences exercise engagement [15,17]. Empirical studies consistently

67 demonstrate that personalised music enhances energy efficiency, reduces perceived exertion,  
68 and improves adherence by fostering positive affect [17]. Such evidence positions  
69 personalised music systems as a key tool for optimising both the immediate and long-term  
70 benefits of exercise.

## 71 **Personalised Interactive Music Systems (PIMS) in physical** 72 **activity and exercise**

73 Recently, advances in personalised music technologies have led to the development of  
74 Personalised Interactive Music Systems (PIMS), which leverage software, sensors, and  
75 computer algorithms to deliver a dynamic, tailored music experience during physical activity  
76 and exercise [18,19]. These systems integrate with smartphones and wearable devices to  
77 monitor user movements and adjust musical features, such as tempo, style, and timbre, in real  
78 time to align with exercise routines, enhancing engagement, and adherence to activity  
79 [20,21].

80 PIMS have been designed for diverse contexts, targeting both intrinsic factors (e.g.,  
81 motivation and attentional focus) and extrinsic factors (e.g., training guidance). For example,  
82 a PIMS, the moBeat system, used real-time interactive music and biophysical feedback to  
83 enhance cycling performance by increasing intrinsic motivation and maintaining pace and  
84 intensity [12]. Similarly, PIMS interventions for older adults have demonstrated benefits for  
85 physical endurance and engagement compared to conventional workout [22]. As mobile  
86 interventions incorporating personalisation have been shown to be more effective at  
87 enhancing physical activity than non-personalised approaches [23], PIMS hold promise for  
88 improving physical activity adherence, reducing the rating of perceived exertion (RPE), and  
89 fostering positive affective states during exercise by dynamically tailoring music to  
90 individual physiological, affective, and contextual needs [7,12,22].

91 Due to the relatively recent advancements of PIMS, there is yet limited empirical evidence on  
92 their effectiveness across physical activity and exercise-related domains. Such information is  
93 essential for informing implementation, replication, and comparative evaluation of  
94 interventions aimed at promoting the adherence to physical activity and exercise [24]. While  
95 systematic reviews and meta-analyses have explored the general effects of music on physical  
96 activity and exercise-related outcomes [6,7,25], these reviews predominantly focused on  
97 traditional music listening interventions and did not systematically evaluate the impact of  
98 personalised and interactive music systems. By specifically examining PIMS, this review and  
99 meta-analysis contribute to understanding how tailored, interactive music interventions  
100 influence physical, psychophysical, and affective dimensions of physical activity and exercise  
101 engagement, thereby addressing a critical gap in the existing literature.  
102 Therefore, this study combines a systematic review and exploratory meta-analysis to evaluate  
103 the effectiveness of PIMS on physical activity and exercise-related outcomes. Specifically,  
104 the study synthesises findings on physical activity levels, psychophysical measures (e.g., RPE  
105 and physical exertion), and affective outcomes (e.g., affective valence and mood states).  
106 Our main research question is: *How effective are PIMS across physical, psychophysical, and*  
107 *affective outcomes during physical activity and exercise?* This analysis intends to provide  
108 early insights into the specificity of PIMS' effects and identify gaps in the literature that  
109 warrant further investigation.

110

## 111 **Methods**

112 This systematic review and meta-analysis was designed based on the Preferred Reporting  
113 Items for Systematic Reviews and Meta-Analyses (PRISMA) protocol [26]. The full search  
114 strategy can be found in the review registration document ([CRD42023465941](#)).

### 115 **Eligibility criteria**

116 We included: (1) Studies investigating the effect of Personalised Interactive Music Systems  
117 (PIMS) on physical activity or exercise, including their effects on motivation, exercise  
118 intensity, adherence, or related outcomes; (2) Studies including participants from diverse  
119 populations (e.g., sufficiently active and not sufficiently active individuals); (3) Articles in  
120 the English language, published from January 2010 to May 2024 in peer-reviewed journals or  
121 as published proceedings (conference papers were considered due to the limited number of  
122 peer-reviewed studies).

123 We excluded: (1) Studies from non-peer-reviewed sources, books, dissertations and theses;  
124 (2) Articles written in languages other than English; (3) Studies that were not directly related  
125 to the effect of PIMS on physical exercise or physical activity.

### 126 **Information sources**

127 We searched the following databases: (1) Web of Science, (2) SPORTDiscus, (3) Medline,  
128 (4) Embase, (5) ACM Digital library databases, (6) Springer, (7) Google Scholar, (8) IEEE  
129 Xplore, and (9) Scopus. The database search was supplemented by a backward snowball  
130 search whereby the reference list of all articles was scanned for potential sources. The  
131 snowball search continued until no new sources could be identified. The initial inter-rater  
132 agreement for the identification of relevant sources was  $k = 0.83$ , indicating a strong level of  
133 agreement among the two individuals performing two independent snowball searches (AD,  
134 TK).



## 135 **Search strategy**

136 A literature search was performed using terminology related to the effects of PIMS on  
137 physical activity and exercise, (“Personali\*ed Interactive Music System\*” OR “Music  
138 Recommendation Algorithm” OR “Music Recommendation System\*” OR “Streaming” OR  
139 “MP3” OR “Digital Music” AND (“Physical Activity” OR “Exercise” OR “Recovery” OR  
140 “Recuperation” OR “Sedentary Behav\*” OR “Physical Inactivity”).

## 141 **Selection process and data collection process**

142 The citations of all retrieved articles were imported into Zotero, where duplicates were  
143 systematically identified and removed. Subsequently, two authors (AD, TK) independently  
144 screened the titles and abstracts of the studies using ASReview [27] and Rayyan [28].  
145 Articles that could not be definitively excluded based on the title or abstract underwent full-  
146 text retrieval for further evaluation. The full-text articles were then independently assessed  
147 for inclusion by the same two authors (AD, TK). Disagreements at any stage were resolved  
148 through discussion, with a third author consulted to achieve consensus when necessary.

## 149 **Data extraction**

150 The studies’ information was extracted to a spreadsheet, including study characteristics, such  
151 as the type of PIMS, the study design, PIMS measurement, and the target behaviour of the  
152 PIMS (Target Physical Activity or Exercise; Table 2).

## 153 **Pre-registration deviations**

154 Where available, quantitative data suitable for meta-analysis were extracted. This was done  
155 for the pre-registered outcome of physical activity level, as well as for affective valence,  
156 RPE, and physical exertion, which were not pre-registered as outcomes. The decision to  
157 extract data on these additional outcomes was taken because of the close relationships  
158 between these variables and physical activity and exercise participation, their prevalence as

159 outcomes in the included studies, and the limited number of studies reporting data on  
160 physical activity and exercise behaviour. In cases where effect sizes could not be readily  
161 calculated based on the published articles, their authors ( $n = 2$ ) were contacted at least twice  
162 for additional data, resulting in the provision of calculations for five additional effect sizes.

## 163 **Operationalisation of terms**

164 This review operationalises four key terms central to physical activity and exercise research.  
165 Physical Activity Level is defined by the quantified volume (e.g., daily activity counts,  
166 weekly minutes), intensity (e.g., metabolic equivalent MET, %VO<sub>2</sub>R), and compliance (e.g.,  
167 adherence to heart rate zones or regimens) [29,30] of physical activity. Affective Valence  
168 refers to the pleasure-displeasure dimension of emotional responses during or after physical  
169 activity, assessed using self-report scales such as the Feeling Scale (FS) [31] and the "good  
170 vs. bad mood" subscale of the Multidimensional Mood Questionnaire (MDMQ), [32]. These  
171 measures capture subjective ratings of positivity or negativity without incorporating arousal  
172 [14,33,34]. Physical Exertion encompasses physiological (e.g., heart rate), biomechanical  
173 (e.g., stride length), and perceptual demands, providing a comprehensive assessment of effort  
174 [35]. These constructs serve as the primary outcomes of interest in this review. The constructs  
175 are summarised in Table 1 and described further in S1 Appendix.

176

177 **Table 1. Operationalisation of terms.**

| Term                               | Definition                                                                                                                                                                                                                                       | Operational Metrics                                                                                                                                                                                                                                                                                                                                                                                                                                                                                                                                                                                                                    | References |
|------------------------------------|--------------------------------------------------------------------------------------------------------------------------------------------------------------------------------------------------------------------------------------------------|----------------------------------------------------------------------------------------------------------------------------------------------------------------------------------------------------------------------------------------------------------------------------------------------------------------------------------------------------------------------------------------------------------------------------------------------------------------------------------------------------------------------------------------------------------------------------------------------------------------------------------------|------------|
| Physical Activity Level            | Encompasses the volume, intensity, and compliance with physical activity recommendations or exercise regimens.                                                                                                                                   | <b>Volume:</b> Total activity counts per day (TAC/d) via accelerometer, mean weekly minutes. Intensity: Absolute intensity using METs, relative intensity as % VO2R.<br><br><b>Compliance:</b> Adherence to recommendations or regimens via changes in volume, device usage, or adherence to heart rate zones.                                                                                                                                                                                                                                                                                                                         | [29,30]    |
| Physical Exertion                  | Effort exerted to perform physical activity, involving physiological, biomechanical, and perceptual demands.                                                                                                                                     | <b>Physiological:</b> Heart rate as an indicator of cardiovascular response. <b>Biomechanical:</b> Stride length and pace for activities such as running and walking. <b>Perceptual:</b> Integration of physiological and biomechanical cues to assess overall effort.                                                                                                                                                                                                                                                                                                                                                                 | [35]       |
| RPE (Rating of Perceived Exertion) | Subjective numerical value reflecting perceived effort during physical activity, integrating sensory cues and physiological sensations.                                                                                                          | <b>Scale:</b> Borg RPE Scale for aerobic activities (cycling, running). <b>Category-Ratio Scale:</b> Borg CR-10 to measure perceived exertion or other sensations. <b>Responses:</b> Local sensations (muscles, skin, joints) and central factors (cardio-pulmonary system).                                                                                                                                                                                                                                                                                                                                                           | [7,36,37]  |
| Affective Valence                  | The subjective feeling of pleasure or displeasure experienced during or after physical activity. It is independent of perceived exertion and reflects emotional responses to exercise, influenced by individual, contextual, and social factors. | Affective valence is measured using self-report scales, such as:<br><br><b>Scale:</b><br>Feeling Scale (FS): Bipolar scale from +5 (very good) to -5 (very bad).<br><br>PANAS (Positive and Negative Affect Schedule): Assesses positive and negative emotions.<br><br>Multidimensional Mood Questionnaire (MDMQ): Evaluates mood during exercise using subscales for “good vs. bad mood,” “calmness vs. agitation,” and “alertness vs. tiredness.” Only the “good vs. bad mood” subscale aligns with the pleasure-displeasure dimension of affect.<br><br><b>Context:</b><br>Measurement occurs during or immediately after exercise. | [14,31–33] |

## 179 **Study risk of bias assessment**

180 The quality of the studies was assessed by two authors (AD, TK) using the Joanna Briggs  
181 Institute critical appraisal checklist, including tools for Quasi-Experimental Appraisal,  
182 Qualitative Research Appraisal, and the Revised Checklist for Randomised Controlled Trials  
183 [JBI, 38] (Fig 2).

## 184 **Data synthesis and analysis methods**

185 We conducted a narrative synthesis, categorising studies into two groups based on design: (1)  
186 experimental studies, including randomised, quasi-experimental, pilot, and within-subject  
187 designs, and (2) proof-of-concept and user-testing studies. This classification enabled the  
188 identification of trends within and across these categories.

189 For experimental studies, we examined outcomes related to physical activity levels, physical  
190 exertion, RPE, and affective valence. Proof-of-concept and user-testing studies were analysed  
191 for their focus on PIMS design features and effectiveness, including synchronisation, user  
192 engagement, and personalisation.

193 Our synthesis followed the methodological framework of [39], facilitating systematic  
194 comparisons across study groups. Trends and variations in PIMS outcomes were interpreted  
195 through subgroup analyses, accounting for methodological rigour and study design. We also  
196 considered sample characteristics, including demographic variability (e.g., age, fitness level,  
197 and population type) and sample size heterogeneity (ranging from  $N = 10$  to  $N = 150$ ).

198 Limitations arising from study heterogeneity were explicitly addressed to provide  
199 transparency regarding factors affecting generalisability.

200 Hedges'  $g$  effect sizes and standard errors were calculated using [40] tool and analysed in the  
201 JASP environment (version 2024). Random-effects meta-analyses, using the inverse variance  
202 weighting method [DerSimonian & Laird method, 41] were conducted for physical activity  
203 level, physical exertion, RPE and affective valence. These outcomes were selected based on

204 the pre-registration criterion: “Meta-analyses will be performed when at least three studies  
205 provide data sufficient for effect size calculation.” For inclusion in the meta-analysis,  
206 physical activity outcomes analysed included behaviours such as walking, running, weight  
207 training, cycling, housework, and gardening, while studies focusing on non-physical activity  
208 outcomes (e.g., subjective feasibility of PIMS) were excluded. Six studies (comprising 17  
209 intervention arms) met this criterion, while outcomes with insufficient data were excluded.  
210 Heterogeneity was assessed using the  $I^2$  statistic (relative proportion of variability attributable  
211 to heterogeneity),  $\tau^2$  statistic (absolute variance), and Cochran's  $Q$  statistic (a formal test of  
212 homogeneity). To address the dispersion of effects across studies, the prediction interval was  
213 calculated, as it provides insights into the range of effects expected in future comparable  
214 studies, beyond the mean effect size [42]. A sensitivity analysis was conducted to evaluate  
215 publication bias by examining the relationship between standard errors and effect size  
216 estimates. Following Sterne and colleagues [43,44] funnel plots were produced to assess  
217 asymmetry, while forest plots were used to summarise the data. Data and syntax files for  
218 these analyses are available in S1 file.

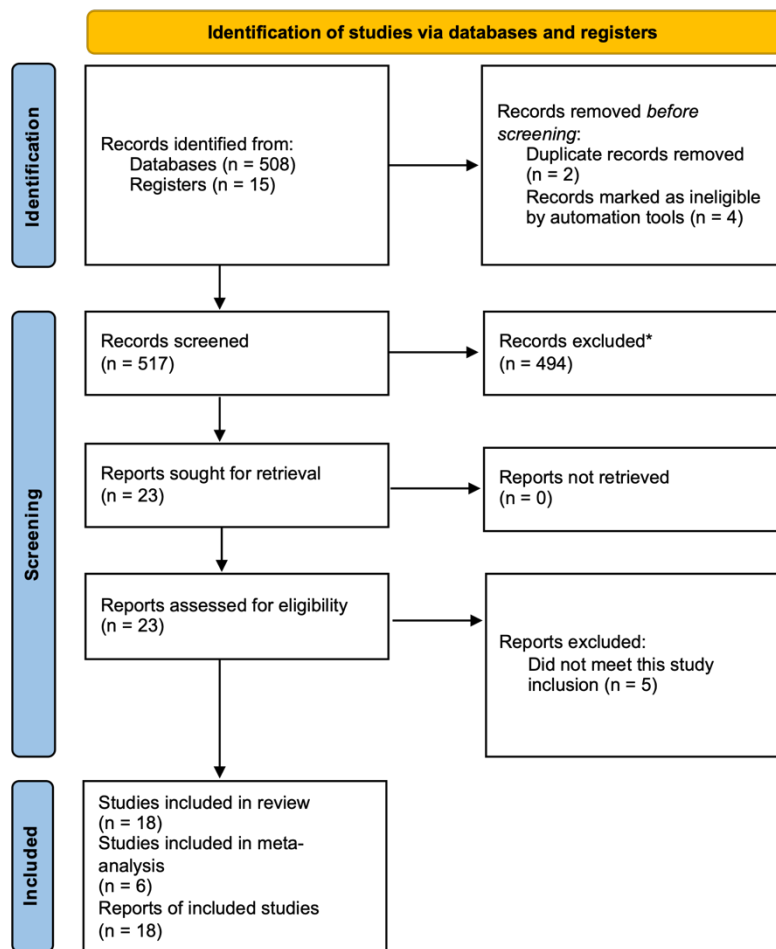
219 An exploratory meta-regression analysis was conducted to investigate potential moderators  
220 contributing to variability in the effectiveness of PIMS on physical activity level, affect, RPE,  
221 and physical exertion. Candidate moderators were selected based on their theoretical  
222 relevance to physical activity and exercise research: study size, participant age, exercise  
223 intensity, and music tempo. Music tempo was categorised into tempo ranges to standardize  
224 data across studies with differing methodologies, reflecting its established influence on  
225 motivational and psychophysical responses [45]. Exercise intensity was classified using MET  
226 guidelines to enhance comparability [46]. Participant age and study size were included to  
227 address population-level and methodological variability, respectively. Due to the small

228 number of studies included in the meta-analyses, the meta-regression encompassed all  
229 outcomes of interest, with a focus on generating hypotheses for future research.  
230 Specifically, within the meta-regression analysis, music tempo was categorised into three  
231 distinct groups based on beats per minute (BPM): Slow (60–90 BPM), coded as 1; Medium  
232 (91–130 BPM), coded as 2; and Fast (131+ BPM), coded as 3. When studies reported  
233 variable tempos, the average BPM or the dominant tempo range was used for classification.  
234 Exercise intensity was categorised using a three-level scale aligned with MET guidelines  
235 [46]: Low (<3 METs), coded as 1; Moderate (3–6.9 METs), coded as 2; and High ( $\geq 7$   
236 METs), coded as 3. For studies that did not explicitly report METs, intensity was inferred  
237 from descriptions of the exercise type or target heart rate zones. Participant age was handled  
238 as follows: for studies reporting mean age directly, the provided value was used. In studies  
239 reporting age ranges, the midpoint of the range was used as an estimate. If group-specific  
240 mean ages were available, a weighted average was calculated based on group sizes to derive  
241 an overall mean age for the study.  
242

## 243 Results

### 244 Study selection

245



246

247

248 [Insert Fig 1 here]

249 \*All records excluded by ASReview [27,28].

250 Fig 1. PRISMA information flow describing the screening process.

251 A total of 523 articles were identified through the initial strategic search using the specified

252 keywords. During the screening process, three articles were excluded as duplicates, while four

253 additional articles were identified as ineligible based on the inclusion criteria. After screening

254 titles and abstracts, 494 articles were excluded for not meeting the inclusion criteria.  
255 Subsequently, 23 full-text articles were assessed for eligibility. Of these, five articles were  
256 excluded because they did not evaluate the desired effect or outcome. In total, 18 articles were  
257 eligible to be included in this review study (Fig 1).

## 258 **Study characteristics**

259 The study characteristics (Table 2) encompass a diverse range of studies conducted across  
260 various countries, including Canada, Spain, Germany, Taiwan, Singapore, Denmark, Finland,  
261 Belgium, Switzerland, the Czech Republic, the Netherlands, Norway, and locations not  
262 specified. These studies, conducted between 2010 and 2024, provide a broad age range  
263 among participants, with some studies focusing on specific groups such as the elderly,  
264 patients with cardiovascular disease, students, non-athletes and office workers. The PIMS  
265 used in these studies vary in their design and objectives, ranging from personalised music  
266 audio-playlists [47–49] to interactive music systems linked to fitness devices [22,34]. These  
267 systems are utilised in different settings and for various purposes, ranging from synchronising  
268 movement during physical activity and exercise, to enhancing the experience of physical  
269 activity and exercise.  
270



271 **Table 2. Characteristics of included studies.**

| Reference | Country     | Age, yrs                 | Sample Size, N        | Population                                                     | Type of PIMS                                                                        | Study Design                     | PIMS Measurement                                         | Target Behaviour/Target Physical Activity or Exercise  | Physical Activity Results                          | g [95% CI] of PIMS on outcomes of interest                                                                                                                                            |
|-----------|-------------|--------------------------|-----------------------|----------------------------------------------------------------|-------------------------------------------------------------------------------------|----------------------------------|----------------------------------------------------------|--------------------------------------------------------|----------------------------------------------------|---------------------------------------------------------------------------------------------------------------------------------------------------------------------------------------|
| [50]      | Canada      | 47.3 – 79.2 <sup>a</sup> | 34                    | Patients with cardiovascular disease                           | Personalised music audio-playlists                                                  | Randomised Experimental Design   | Tri-axial accelerometer                                  | Adherence                                              | Improved PA volumes ( $p < 0.001$ )                | $g = 0.06 [-1.04, 0.92]$ for Physical Activity Level (No RAS)<br>$g = 0.51 [-0.47, 1.49]$ for Physical Activity Level (RAS)                                                           |
| [47]      | Spain       | N/A                      | N/A                   | N/A                                                            | Personalised music recommendation system                                            | Proof of Concept                 | Sensors <sup>b</sup>                                     | Motivation/performance enhancement                     | N/A                                                | N/A                                                                                                                                                                                   |
| [51]*     | Germany     | N/A                      | 1                     | Elderly participant                                            | Music feedback for rehabilitation                                                   | Proof of Concept                 | Accelerometer                                            | Rehabilitation                                         | N/A                                                | N/A                                                                                                                                                                                   |
| [52]*     | Taiwan      | 21.56 ± 1.04             | 10 female and 26 male | Participants from the National Yang Ming Chiao Tung University | Exercise system for middle-distance running                                         | Experimental                     | Smartphone's built-in tri-axial accelerometer            | Adapting music selection to user's pace during walking | N/A                                                | $g = -0.73 [-1.40, -0.06]$ for Physical Exertion<br>$g = 1.63 [0.88, 2.39]$ for RPE<br>$g = 2.17 [1.34, 2.99]$ for Affective Valence                                                  |
| [53]      | Taiwan      | N/A                      | N/A                   | N/A                                                            | Music Assisted Run Trainer (MART)                                                   | Proof of Concept                 | Tri-axial accelerometer                                  | Physiological, perceptual, affective responses         | N/A                                                | N/A                                                                                                                                                                                   |
| [48]*     | Singapore   | N/A                      | 60                    | Students                                                       | A music recommendation system                                                       | Within-subjects Crossover Design | Music recommendation ratings                             | Motivation                                             | N/A                                                | N/A                                                                                                                                                                                   |
| [34]      | N/A         | N/A                      | 45                    | Non-athletes, non-body builders, non-musicians                 | Jymmin® – Sensor attached to fitness devices to provide musical feedback            | Experimental Design              | Movement sensor <sup>c</sup>                             | Workout                                                | N/A                                                | $g = 0.96 [0.35, 1.56]$ for Affective Valence                                                                                                                                         |
| [54]*     | N/A         | N/A                      | 27                    | N/A                                                            | Runner's Jukebox (RJ) – music tempo matching the user's pace during exercise        | User Testing Design              | Smartphone app to recognise user pace/adjust music tempo | Walking/running pace monitor <sup>d</sup>              | N/A                                                | $g = 2.76 [1.63, 3.89]$ for Physical Exertion (Fixed BPM)<br>$g = 2.29 [1.24, 3.34]$ for Physical Exertion (Pace-Matched)<br>$g = -0.74 [-1.61, 0.13]$ for Physical Exertion (Random) |
| [55]*     | Denmark     | N/A                      | N/A                   | N/A                                                            | Music clips with dynamic BPM ranging from 110 – 170                                 | Proof of Concept                 | Sensors <sup>e</sup>                                     | Cycling                                                | N/A                                                | N/A                                                                                                                                                                                   |
| [56]      | Switzerland | 18–45                    | 7 females, 8 males    | Cyclists                                                       | SoundBike – Musical sonification to improve spontaneous synchronisation of cyclists | Experimental                     | Sensors                                                  | Cycling                                                | Enhanced cyclist synchronisation to external music | N/A                                                                                                                                                                                   |
| [57]      | Finland     | N/A                      | 2                     | Elderly participants                                           | Processing accelerometry data to create musical sonifications of physical activity  | Proof of Concept                 | Sonification of PA data <sup>f</sup>                     | Awareness of PA                                        | N/A                                                | N/A                                                                                                                                                                                   |
| [58]*     | Belgium     | N/A                      | 33                    | Participants from public event                                 | DSaT algorithm for music selection and real-time adaptation <sup>g</sup>            | Pilot Study                      | Tri-axial accelerometer                                  | Synchronisation to beat of music                       | Majority (56.79%) synchronised steps with music    | N/A                                                                                                                                                                                   |

|       |                         |                                                      |                                                                           |                                              |                                                                          |                                  |                                                                   |                                  |                                        |                                                                                                                                                                                             |
|-------|-------------------------|------------------------------------------------------|---------------------------------------------------------------------------|----------------------------------------------|--------------------------------------------------------------------------|----------------------------------|-------------------------------------------------------------------|----------------------------------|----------------------------------------|---------------------------------------------------------------------------------------------------------------------------------------------------------------------------------------------|
| [59]  | Belgium, Czech Republic | 21.9 ± 12.9<br>20.2 ± 0.8<br>21.2 ± 1.7<br>23 ± 3 SD | 82 male, 68 female<br>56 male, 44 female<br>12 female<br>6 female, 4 male | N/A                                          | Synchronise music with the participant's movements                       | Case Study                       | Recordings of footfalls & music alignment strategies <sup>h</sup> | Synchronisation to beat of music | Improved entrainment                   | N/A                                                                                                                                                                                         |
| [49]* | N/A                     | N/A                                                  | N/A                                                                       | N/A                                          | Context-aware recommender system (CAMRS)                                 | Mixed-method Design <sup>i</sup> | Automatic learning algorithm                                      | Motivate users to complete PA    | N/A                                    | N/A                                                                                                                                                                                         |
| [22]  | Germany                 | 70.6 (SD ± 3.9)                                      | 11 females<br>5 males                                                     | Non-physically active                        | Jymmin® – Sensor attached to fitness devices to provide musical feedback | Within-subjects Design           | Movement sensor <sup>j</sup>                                      | Strength-endurance exercises     | N/A                                    | $g = 0.73$ [0.00, 1.46] for Physical Activity Level<br>$g = 0.20$ [-0.27, 0.67] for RPE<br>$g = 0.09$ [-0.47, 0.64] for Affective Valence                                                   |
| [60]* | Netherlands             | 18 – 25                                              | 24                                                                        | Office workers                               | Smart cushion providing musical feedback                                 | Within-Subjects Design           | Movement sensor-pad                                               | Posture changes                  | No effect breaking sedentary behaviour | N/A                                                                                                                                                                                         |
| [61]  | Norway                  | N/A                                                  | 3 – 6 <sup>k</sup>                                                        | Seniors with early-stage Alzheimer's disease | Interactive music system                                                 | Qualitative Research Design      | Sensor-pad                                                        | Stimulate/motivate PA            | N/A                                    | N/A                                                                                                                                                                                         |
| [12]  | Netherlands             | 23 – 51                                              | 26                                                                        | Philips employees                            | MoBeat – Interactive music system                                        | Within-Subject Experiment        | Cadence sensor, heart-rate                                        | Motivation                       | N/A                                    | $g = 0.54$ [-0.22, 1.30] for Physical Activity Level<br>$g = 0.54$ [-0.22, 1.30] for Physical Exertion<br>$g = 0.43$ [-0.32, 1.19] for RPE<br>$g = 3.79$ [2.52, 5.06] for Affective Valence |

Notes:

- 272 \* = Conference papers.  
 273  
 274 <sup>a</sup> = Lowest lower bound: 47.3 years (from the second subgroup). Highest upper bound: 79.2 years (from the first  
 275 subgroup). The estimated entire age range for all three groups combined would be from approximately 47.3 years  
 276 to 79.2 years.  
 277 <sup>b</sup> = Galvanic Skin Response, oxygen saturation sensor, pulse sensor.  
 278 <sup>c</sup> = Jymmin® – The movement of the sensor-equipped fitness device is mapped to musical parameters, creating  
 279 an acoustic feedback signal.  
 280 <sup>d</sup> = Swings Per Minute (SWPM).  
 281 <sup>e</sup> = Monitor cycling pace and heart rate, influencing audio feedback (soundscape sounds) in real-time.  
 282 <sup>f</sup> = Accelerometry data.  
 283 <sup>g</sup> = Dynamic Song and Tempo (DSaT).  
 284 <sup>h</sup> = The methodology involved recording footfalls and various music alignment strategies to synchronise music  
 285 with participants' walking or running movements.  
 286 <sup>i</sup> = Includes elements of a proof of concept design and an experimental design.  
 287 <sup>j</sup> = Jymmin® – The movement of the sensor-equipped fitness device is mapped to musical parameters, creating  
 288 an acoustic feedback signal.  
 289 <sup>k</sup> = Exact numbers are not specified, but a mention of a group size of 3 to 6 participants.  
 290

291

## 292 **Reported outcome measures**

293 A variety of outcome measures were reported across studies to explore the effects of PIMS  
294 on physical activity and exercise-related behaviours. The outcome measures included  
295 assessments of physical activity levels, such as accelerometer-based metrics and adherence to  
296 specific heart rate zones, as well as psychological and perceptual outcomes such as mood  
297 (measured through tools such as the MDMQ and FS) and intrinsic motivation (measured via  
298 the Intrinsic Motivation Inventory, IMI). The rating of perceived exertion (RPE) was  
299 frequently captured using the Borg CR-10 scale [36,37]. Table 3 presents this information.  
300 Further information on these outcome measurements can be found in S2 Appendix.

301

302 **Table 3. Outcome measures as reported in the studies.**

| Outcome Measure         | Measurement Method                                                                                 | Study      |
|-------------------------|----------------------------------------------------------------------------------------------------|------------|
| Physical Activity Level | Mean weekly minutes of physical activity measured using a tri-axial accelerometer.                 | [50]       |
|                         | Duration of exercise until exhaustion, timed with a stopwatch.                                     | [22]       |
|                         | Compliance with exercise regime by monitoring adherence to target heart rate zones during cycling. | [12]       |
| Affective Valence       | Feeling Scale (FS) based on Russell’s circumplex model of affect.                                  | [52]       |
|                         | MDMQ, evaluating “good vs. bad” mood dimensions during acute physical exercise.                    | [22,34]    |
|                         | Interest/Enjoyment subscale of the Intrinsic Motivation Inventory (IMI) for intrinsic motivation.  | [12,62,63] |
| RPE                     | Borg CR-10 scale, with RPE ratings collected at specific time intervals during exercise.           | [12,22,52] |
| Physical Exertion       | Heart rate measured using a Polar Verity Sense device based on photoplethysmography (PPG).         | [52]       |
|                         | Pace measured via SWPM (Steps per Minute) using smartphone accelerometer data.                     | [54]       |
|                         | Heart rate measured using a Polar T61 heart rate belt.                                             | [12]       |

303

304 Studies utilised diverse technologies and protocols to assess PIMS' effects on physical  
 305 activity and exercise behaviours. Reported technologies included accelerometers, heart rate  
 306 monitors, and systems such as Jymmin®, which integrate real-time musical feedback with  
 307 gym equipment. Analytical methods, such as ANOVA and MANOVA, were used to evaluate  
 308 outcomes, with specific systems adapting music based on cadence, heart rate, and intensity.  
 309 Table 4 presents a detailed overview of these technologies and protocols.

310

311 **Table 4. Technologies and Analysis Protocols of PIMS.**

| Type of PIMS                          | PIMS Description                                                                                                 | Data Analysis Protocol                     | Reference |
|---------------------------------------|------------------------------------------------------------------------------------------------------------------|--------------------------------------------|-----------|
| Accelerometer                         | Music synchronisation with step cadence                                                                          | N/A                                        | [54]      |
| Heart Rate Monitor                    | Music tempo adjustments based on physiological data                                                              | ANOVA, MANOVA                              | [52]      |
| Jymmin®                               | Music feedback system                                                                                            | ANOVA, MANOVA, Wilcoxon Signed-Ranks Test  | [22,34]   |
| Magnet and Heart Rate Sensors         | Magnet sensors detect RPM, paired with heart rate to optimise cycling rhythms                                    | N/A                                        | [55]      |
| MoBeat                                | Music feedback system                                                                                            | ANOVA                                      | [12]      |
| Musical Sonification Systems          | Converts movement data into sound to enhance engagement and differentiate activity patterns                      | One proportion z-test                      | [57]      |
| Musical Sonification (Custom Pedals)  | Pedals with load sensors and microcontroller adjust musical feedback                                             | ANOVA, Friedman Test, Pairwise comparisons | [56]      |
| PAM® (Personal Activity Monitor)      | N/A                                                                                                              | Generalised Linear Modelling               | [50]      |
| Three-axis Accelerometer (Smartphone) | Adjusts music tempo to synchronise with user pace using Swings Per Minute (SWPM)                                 | N/A                                        | [54]      |
| Tri-axial Accelerometer               | Uses accelerometer and heart rate to adjust music tempo for maintaining target heart rate during cardio-training | N/A                                        | [53]      |

312

### 313 Risk of bias in studies

314 Following the assessment of the study quality using the JBI critical appraisal checklist tools,  
 315 the nine criteria were adapted to the five risk of bias domains found in the [64] R package for  
 316 risk-of-bias assessments (robvis). This assessment tool tests the risk of bias resulting from the  
 317 randomisation process (D1), deviations from intended intervention (D2), missing outcome  
 318 data (D3), measurement of the outcome (D4), and selection of the reported result (D5). Each  
 319 domain is assessed with a judgement scale indicating a high risk of bias (red cross), some  
 320 concerns (yellow circle), low risk of bias (green plus) and No Information (blue question  
 321 mark) (cf. Fig 2).

|       |      | Risk of bias domains |    |    |    |    |         |
|-------|------|----------------------|----|----|----|----|---------|
|       |      | D1                   | D2 | D3 | D4 | D5 | Overall |
|       | [50] | +                    | +  | +  | +  | +  | +       |
|       | [47] | X                    | ?  | -  | ?  | X  | X       |
|       | [51] | ?                    | ?  | X  | ?  | X  | X       |
|       | [53] | ?                    | X  | ?  | ?  | X  | X       |
|       | [52] | -                    | +  | +  | -  | -  | -       |
|       | [48] | -                    | +  | X  | X  | -  | X       |
|       | [34] | ?                    | +  | +  | +  | +  | -       |
|       | [54] | ?                    | ?  | X  | X  | ?  | X       |
| Study | [55] | ?                    | ?  | ?  | X  | ?  | X       |
|       | [56] | -                    | +  | +  | +  | +  | -       |
|       | [57] | ?                    | ?  | ?  | X  | X  | X       |
|       | [58] | ?                    | -  | ?  | -  | -  | -       |
|       | [59] | ?                    | -  | -  | ?  | -  | -       |
|       | [49] | ?                    | ?  | ?  | ?  | X  | X       |
|       | [22] | -                    | +  | +  | +  | +  | -       |
|       | [60] | X                    | +  | X  | -  | X  | X       |
|       | [61] | -                    | +  | X  | X  | -  | X       |
|       | [12] | -                    | +  | +  | +  | -  | -       |

Domains:

D1: Bias arising from the randomization process.

D2: Bias due to deviations from intended intervention.

D3: Bias due to missing outcome data.

D4: Bias in measurement of the outcome.

D5: Bias in selection of the reported result.

Judgement

X High

- Some concerns

+

323 **[Insert Fig 2 here]**

324 **Fig 2. Evaluation of risk of bias in the included studies, categorised across five domains**  
325 **from D1 to D5 [cf.62]. An overall bias risk assessment for each study is also provided,**  
326 **conservatively summarising the findings across all five domains.**

327 We included all 18 studies in the review regardless of their overall risk of bias rating (see Fig  
328 2, column ‘Overall’). The overall risk of bias rating for each study was assigned  
329 conservatively, reflecting the highest risk level present across any of the five domains (D1–  
330 D5). For example, if one domain was judged to have a high risk of bias, the overall rating for  
331 that study was classified as high risk. Of the 18 studies, one randomised experimental design  
332 study [50] was rated for low risk of bias. Seven studies received a moderate (some concerns)  
333 rating of risk of bias, and 10 were rated for a high risk of bias.

### 334 **PIMS used in experimental studies**

335 PIMS were explored in experimental studies for their influence on physical, psychophysical,  
336 and affective exercise-related outcomes. Several studies focused on synchronisation and  
337 auditory-motor coupling. [59] examined beat synchronisation using the D-Jogger adaptive  
338 music player. They found that initiating music in phase synchrony significantly enhanced  
339 consistent sensorimotor patterns, while strategies relying on tempo adjustments alone were  
340 less effective. [56] provided detailed analyses of synchronisation strength using SoundBike,  
341 where musical sonification significantly increased pedal cadence synchronisation with  
342 external music. Similarly, [54] found significant increases in step frequency (SWPM) when  
343 music tempo aligned with user pace, enhancing consistency and efficiency of the activity.  
344 [22,34] reported on the Jymmin® system's role in improving mood and exercise duration.  
345 Notably, [34] observed mood enhancements in younger adults, while [22] noted prolonged  
346 exercise durations in elderly participants despite no significant mood changes. This may be  
347 potentially due to age-related differences in energy pacing. [61] explored a tempo-responsive

348 system for Alzheimer's patients, observing improved synchronisation and engagement.  
349 Additionally, [12] reported the moBeat system maintained exercise compliance while  
350 enhancing intrinsic motivation and attentional dissociation from discomfort. Sample sizes  
351 varied ( $N = 10$  to 150), with participants aged 18–79 across diverse demographics. Detailed  
352 descriptions of PIMS used in these studies can be found in S1 Table.

### 353 **PIMS used in proof of concept and user testing studies**

354 Proof-of-concept and user-testing studies used PIMS to adapt music or audio feedback based  
355 on real-time physical activity and exercise-related data (e.g., heart rate, oxygen saturation,  
356 and galvanic skin response, GSR), with a focus on music recommendation systems and  
357 synchronisation features. [47] tested DJ-Running, which integrates environmental (GPS), and  
358 GSR data to provide personalised music recommendations using algorithms such as Artificial  
359 Neural Networks (ANNs). [49] developed a context-aware recommender system using  
360 smartphone sensors to adjust music based on exercise intensity, providing evidence for  
361 preliminary efficacy in low-concentration activities (e.g., low-to-moderate-intensity activities  
362 that require minimal concentration such as walking).

363 Two synchronisation-based systems were included: [53] Music Assisted Run Trainer  
364 (MART), which adjusts music tempo to heart rate or step frequency; and [51] Music  
365 Feedback Exercise (MFE) system, which synchronises music with movement intensity  
366 through advanced audio processing. For example, as exercise intensity increases, additional  
367 layers of musical elements such as rhythm guitar, bass, or drums are progressively added to  
368 the audio track. [57] introduced musical sonification, converting movement data into music  
369 for users to identify different physical activity patterns. [55] examined ecological  
370 soundscapes to influence cycling behaviour. Soundscapes were, for example, dynamically  
371 altered based on users' cycling speed and heart rate.



372 [58] reported optimal movement entrainment at ~120 BPM using D-Jogger but noted  
373 disruptions during song transitions. [48] reinforcement learning-based system found  
374 improved user satisfaction and fewer track rejections, while [61] found tempo-responsive  
375 music systems beneficial for older adults with Alzheimer's. Median sample size was  $n = 6$ ,  
376 with limited demographic data reducing generalisability. Details on these systems can be  
377 found in S2 Table.

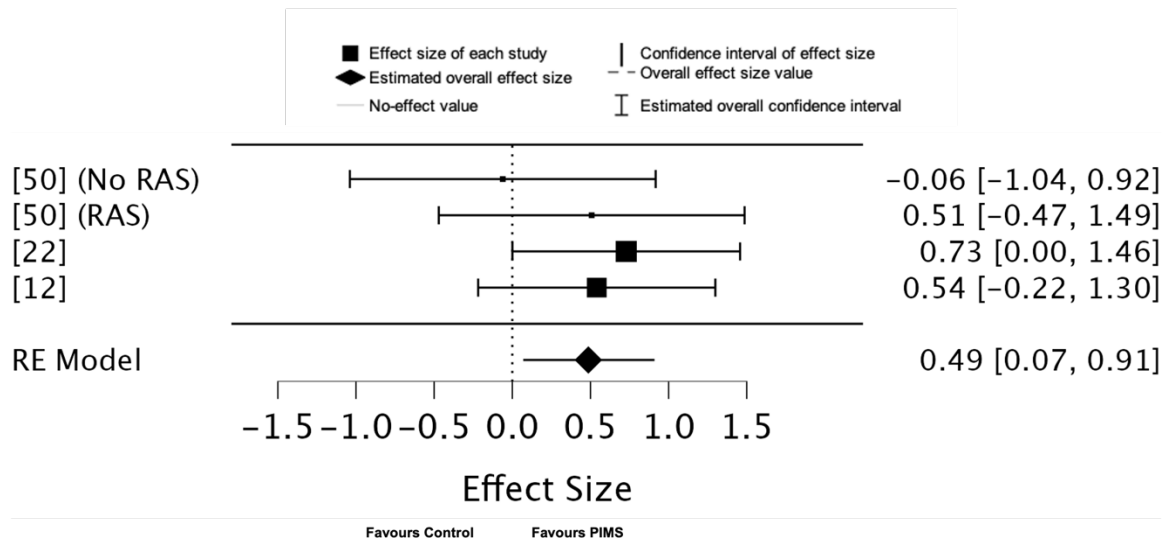
## 378 **Meta-analyses**

379 A single overall meta-analysis of the studies was not achievable due to heterogeneity across  
380 datasets and outcomes [65]. Instead, the outcomes were reported separately based on their  
381 focus. The reported outcomes distinguished between (1) physical activity levels, (2) physical  
382 exertion, (3) ratings of perceived exertion (RPE), and (4) affective valence.

## 383 **Results for physical activity level**

384 The overall effect size is 0.49 with a 95% CI of 0.07 to 0.91, and a  $p$ -value of .02 ( $k = 4$ ,  $n =$   
385 76). This indicates that the results are statistically significant, supporting the effectiveness of  
386 PIMS in improving outcomes relating to physical activity level (Fig 3). The random-effects  
387 model indicates low heterogeneity ( $Q = 1.65$ ,  $p = .65$ ,  $I^2 = 0\%$ ,  $\text{Tau} = 0.00$ ) between the  
388 studies, suggesting it to be negligible. The calculated 95% prediction interval for the true  
389 effect size is -0.43 to 1.41, indicating that while the average effect is positive, the range of  
390 potential true effects across future studies could include negative or larger positive outcomes.

391



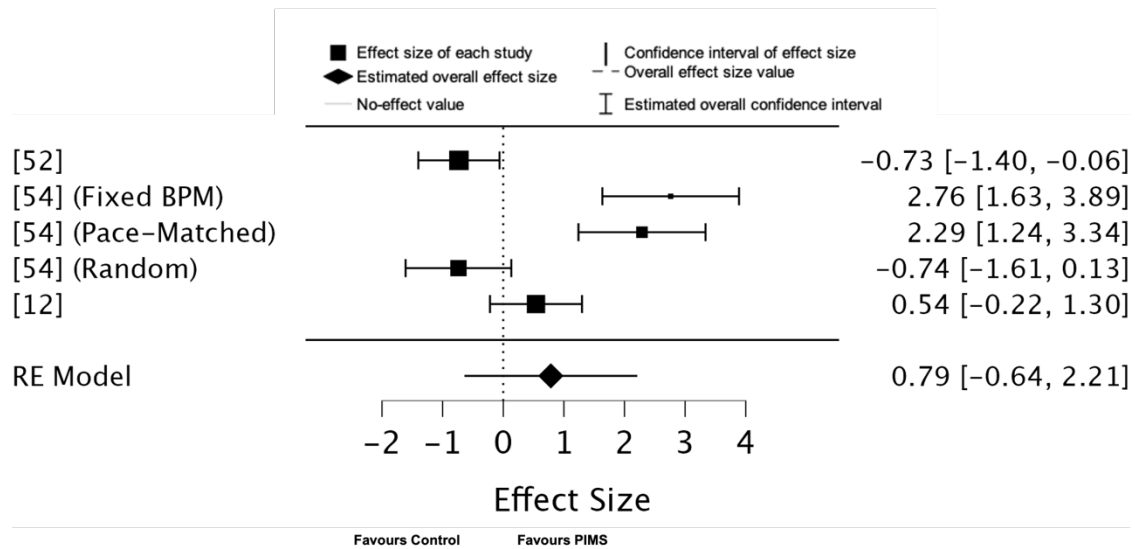
392

393 [Insert Fig 3 here]

394 **Fig 3. Forest plot of effect sizes for physical activity level outcomes associated with**  
 395 **PIMS.**

### 396 Results for physical exertion

397 The overall effect size is 0.79 with a 95% CI of -0.64 to 2.21, and a  $p$ -value of .28 ( $k = 5, n =$   
 398 142), indicating that the results are not statistically significant and do not support the  
 399 effectiveness of PIMS in improving physical exertion outcomes (Fig 4). The random-effects  
 400 model indicates high heterogeneity ( $Q = 46.96, p = .00, I^2 = 93%, \text{Tau} = 2.44$ ) between the  
 401 studies. The calculated 95% prediction interval for the true effect size is -4.69 to 6.27,  
 402 indicating the potential for considerable variation in the effects of PIMS on physical exertion  
 403 across future studies.



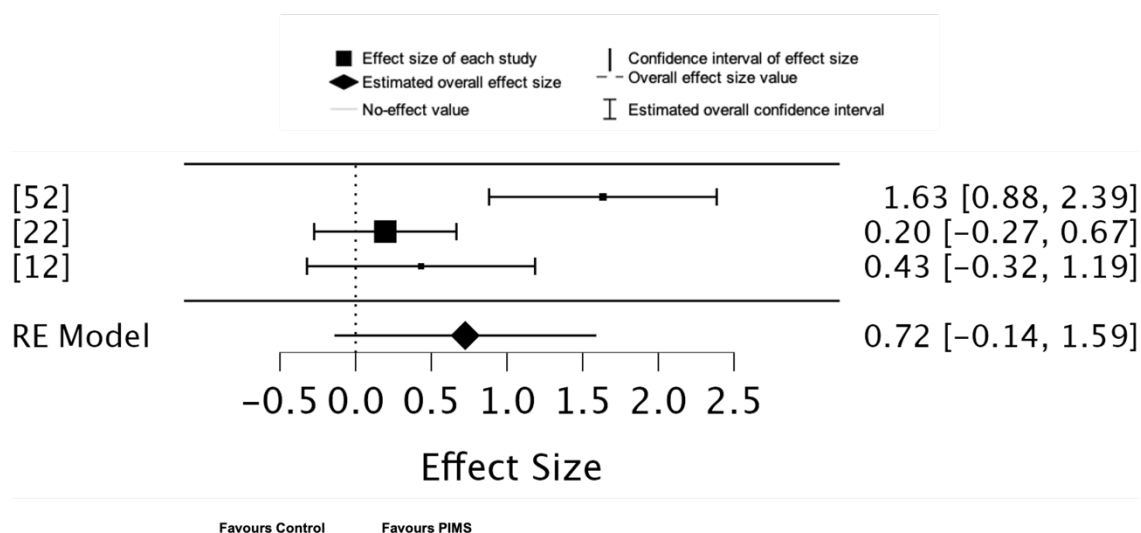
404

405 [Insert Fig 4 here]

406 Fig 4. Forest plot of effect sizes for physical exertion outcomes associated with PIMS.

### 407 Results for ratings of perceived exertion (RPE)

408 The overall effect size is 0.72 with a 95% CI of -0.14 to 1.59, and a  $p$ -value of .10 ( $k = 3, n =$   
 409 77), indicating that the results are not statistically significant and do not conclusively support  
 410 the effectiveness of PIMS in improving RPE outcomes (Fig 5). The random-effects model  
 411 indicates substantial heterogeneity ( $Q = 10.24, p = .01, I^2 = 81\%, \text{Tau} = 0.47$ ) between the  
 412 studies. The calculated 95% prediction interval for the true effect size is -9.64 to 11.08,  
 413 reflecting the significant variability in potential outcomes across future studies.



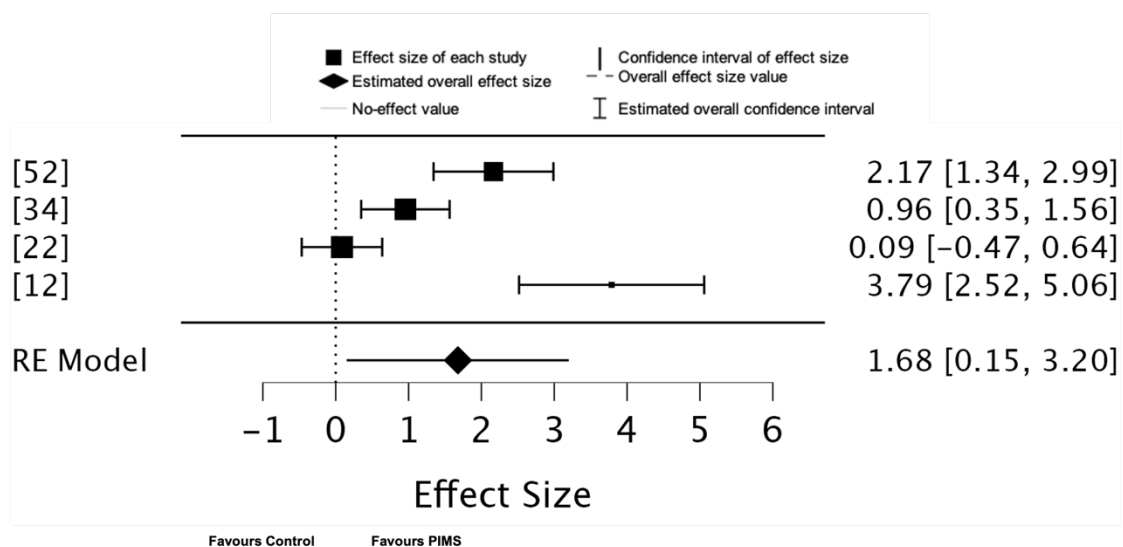
414

415 [Insert Fig 5 here]

416 **Fig 5. Forest plot of effect sizes for Ratings of Perceived Exertion (RPE) outcomes**  
417 **associated with PIMS.**

## 418 Results for affective valence

419 The overall effect size is 1.68 with a 95% CI of 0.15 to 3.20, and a  $p$ -value of .03 ( $k = 4, n =$   
420 122), indicating that the results are statistically significant and thus consistent with the  
421 effectiveness of PIMS in improving affective valence outcomes (Fig 6). The random-effects  
422 model indicates substantial heterogeneity ( $Q = 36.69, p = .00, I^2 = 94%, \text{Tau} = 2.24$ ) between  
423 the studies. The calculated 95% prediction interval for the true effect size is -5.58 to 8.94,  
424 highlighting significant variability in potential outcomes across future studies.



425

426 [Insert Fig 6 here]

427 **Fig 6. Forest plot of effect sizes for affective valence outcomes associated with PIMS.**

428

## 429 Meta-regression analysis

430 Heterogeneity was identified in the meta-analyses, prompting the use of meta-regression  
431 analysis to explore potential moderators of effect sizes. Music tempi showed a statistically  
432 significant positive association with effect sizes ( $p = .044$ ), suggesting that faster tempi may

433 have a significant effect across the outcomes of interest. None of the other predictors,  
434 including participant age, exercise intensity, or sample size, demonstrated a significant effect  
435 on effect sizes (see Table 5). The overall meta-regression model was not statistically  
436 significant ( $p = .189$ ), and substantial heterogeneity remained unexplained ( $Q = 76.782, p <$   
437  $.001, I^2 = 87.77\%$ ,  $\text{Tau} = 1.049$ ). This indicates that other, unexplored factors likely  
438 contribute to the variability in outcomes. Given the inclusion of all outcomes of interest in  
439 this analysis, the potential for residual variability and unaccounted-for heterogeneity is high.

440 **Table 5. A summary of the meta-regression analysis.**

*Coefficients*

|                    | Estimate | Standard Error | <i>z</i> | <i>p</i> |
|--------------------|----------|----------------|----------|----------|
| Intercept          | 1.229    | 3.208          | 0.383    | .702     |
| Age                | -0.036   | 0.043          | -0.822   | .411     |
| Music Tempo        | 0.623    | 0.309          | 2.015    | .044     |
| Exercise Intensity | 0.207    | 1.360          | 0.152    | .879     |
| Sample Size        | -0.026   | 0.067          | -0.381   | .703     |

*Note.* Wald test.

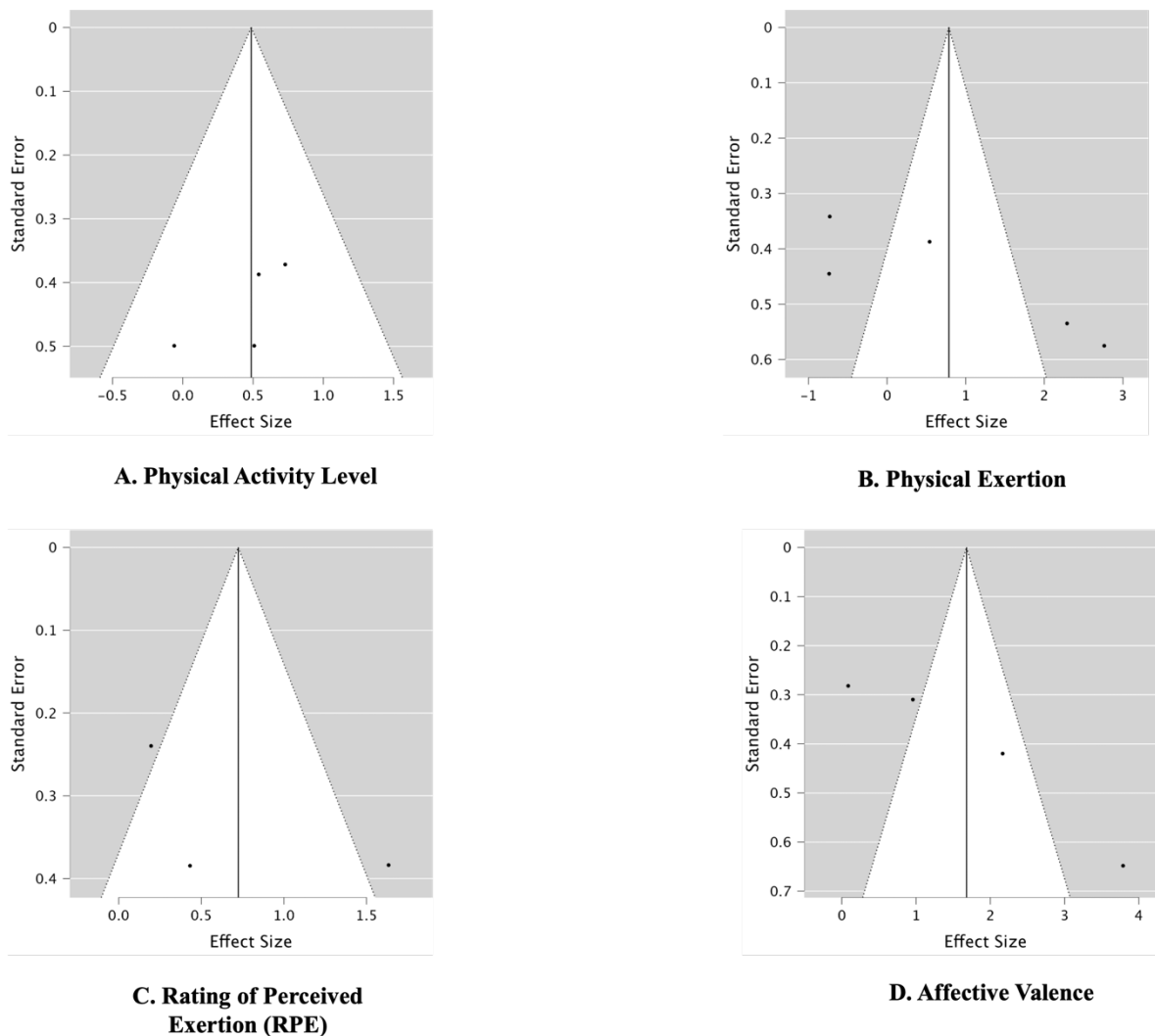
441

442

443

## 444 Publication bias analysis (Egger's test)

445 Egger's test [66] indicated non-significant asymmetry for physical activity level ( $z = -0.968$ ,  
446  $p = .333$ ), significant asymmetry for physical exertion ( $z = 2.927$ ,  $p = .003$ ), non-significant  
447 asymmetry for RPE ( $z = 0.832$ ,  $p = .405$ ), and significant asymmetry for affective valence ( $z$   
448  $= 4.961$ ,  $p < .001$ ) (Fig 7). Because of potential publication bias, the summary effect sizes for  
449 physical exertion and affective valence outcomes may thus be slightly inflated.



450

451 [Insert Fig 7 here]

452 Fig 7. Funnel plots for Physical Activity Level (A), Physical Exertion (B), Rating of  
453 Perceived Exertion (RPE) (C), and Affective Valence (D).

454

## 455 **Discussion**

456 The aim of this review was to systematically evaluate the effectiveness of Personalised  
457 Interactive Music Systems (PIMS) across physical activity levels, physiological outcomes  
458 (e.g., heart rate and step frequency), psychophysical outcomes (e.g., the rating of perceived  
459 exertion), and affective valence in relation to physical activity and exercise behaviours. A  
460 central focus was an exploratory meta-analysis of PIMS across these outcome domains.  
461 The exploratory meta-analysis revealed that PIMS demonstrate favourable effects on physical  
462 activity levels and affective valence, with effect size estimates surpassing those of general  
463 music listening [6]. However, the certainty of evidence is limited by methodological  
464 inconsistencies, a moderate to high risk of bias and the limited number of published studies  
465 eligible for meta-analyses. Importantly, no significant effects were observed for ratings of  
466 perceived exertion (RPE) or measured physical exertion. This reflects variability in the  
467 psychophysical outcomes associated with interventions using PIMS.

468 When examining the findings of individual studies separately, they offer preliminary  
469 evidence that PIMS may improve physical, psychophysical, and affective outcomes related to  
470 physical activity and exercise. For example, [22] observed longer exercise durations during  
471 sessions utilizing Jymmin® compared to routines with passive music listening, without  
472 significant increases in perceived exertion. Similarly, [50] reported increased weekly physical  
473 activity volumes among cardiovascular disease patients using personalised Rhythmic  
474 Auditory Stimulation (RAS)-enhanced playlists. Additionally, [60] provided qualitative  
475 evidence suggesting that PIMS may prompt physical activity, such as reducing sitting time in  
476 office settings.

477 However, interpreting these findings is challenging due to methodological limitations and  
478 variability in population characteristics. Some studies focus on clinical populations, such as  
479 cardiovascular disease patients [50], while others target healthy younger adults [53] or elderly

480 participants [22]. Several studies lack demographic details entirely, further complicating the  
481 assessment of population-specific efficacy. Sample sizes also vary widely, from single  
482 participants [51] to larger groups [53,  $N = 36$ ].

### 483 **Heterogeneity in PIMS outcomes: methodological influences**

484 The wide prediction intervals observed across outcome domains reflect the substantial  
485 heterogeneity in PIMS effects. For example, prediction intervals for physical activity levels  
486 and affective valence highlight significant variability in potential effect sizes. This suggests  
487 that while PIMS may provide positive average effects, individual study outcomes could range  
488 from substantial benefits to negligible or even negative impacts. Similarly, the prediction  
489 intervals for RPE and physical exertion emphasise uncertainty surrounding these  
490 psychophysical outcomes, pointing to inconsistencies in measurement and intervention  
491 design.

492 Specifically, variations in study methodologies and control group conditions contribute  
493 significantly to this heterogeneity. Some studies utilised passive music or other auditory  
494 stimuli as controls, while others used no-music conditions. This negatively affects  
495 comparability. Well-powered randomised designs, such as [50], produced robust findings,  
496 whereas smaller studies, such as [22], yielded non-significant results, pointing to the  
497 influence of study design and statistical power. Additionally, short intervention durations and  
498 small sample sizes [55,57] constrain the generalisability of findings. The absence of  
499 standardised metrics and protocols across studies further hinders the ability to synthesise  
500 outcomes and develop systematic guidelines for PIMS interventions. To alleviate this, future  
501 research should adopt standardised protocols and outcome measures. This could be achieved  
502 via a Music Selection and Delivery Protocol, ensuring uniformity through a predefined  
503 library of music tracks categorised by tempo and intensity, delivered via standardised systems  
504 (e.g., wireless headphones at consistent volumes). Validated tools such as the Borg Rating of



505 Perceived Exertion (RPE) and the Feeling Scale (FS) for measuring affective valence,  
506 administered at fixed intervals, may enhance comparability.

## 507 **Feasibility of PIMS on physical activity levels and affective** 508 **outcomes**

509 Despite methodological inconsistencies, our findings suggest that PIMS may have a positive  
510 influence on physical activity levels. Studies in this cluster were rated as having low [50] to  
511 moderate [12,22] risk of bias, with both [50] and [22] focusing on elderly populations.

512 Positive effects include increased exercise duration [22; ~66 seconds] and overall weekly  
513 physical activity [50; ~105.4 additional minutes per week on average]. However, [12] found  
514 no significant impact of PIMS on physical activity levels. The low heterogeneity in this  
515 cluster indicates consistent findings despite variations in study design and participant  
516 populations. This is promising and calls for further investigation.

517 Our results align with Clark et al. (2024), who noted that music listening, when combined  
518 with physical activity, enhances exercise outcomes in older adults. Both [50] and [12]  
519 employed synchronisation strategies—RAS and auditory-motor coupling, respectively—  
520 consistent with frameworks by [8,67] that link synchronised music to improved physical  
521 activity and exercise performance. However, the exploratory nature of the meta-analysis and  
522 the small number of studies limit the potential generalisability of these findings. Further  
523 research with diverse populations and robust methodologies is required to confirm whether  
524 PIMS are effective adjuncts for increasing physical activity levels.

525 For affective valence, the large effect size estimate suggests PIMS contribute to elevated  
526 affective experiences during physical activity and exercise [12,22,34,52]. However, this  
527 finding is strongly influenced by [12], whose notably high effect size estimate substantially  
528 raised the overall meta-analytic effect size estimate. In contrast, smaller effects observed in  
529 other studies [22,34] reduced the precision and generalisability of the overall meta-analytic

530 finding. The differences in these outcomes likely reflect variations in music selection  
531 methods: researcher-selected music in [12] prompted synchronisation and enjoyment ('fun  
532 and enjoyment' ratings via IMI), while self-selected music [52] and device-generated  
533 feedback [22,34] influenced affective outcomes in distinct ways. In [12] researcher-selected  
534 music facilitated synchronisation, while [52] used self-selected music based on participants'  
535 individual preferences. [22,34] utilised device-generated musical feedback, where  
536 participants' movements influenced the music. These differences suggest that PIMS may  
537 enhance affective valence outcomes during physical activity and exercise through both self-  
538 selected and researcher-selected music, with evidence of positive effects for music tailored to  
539 individual preferences (aligning with prior research by [7,11]) as well as for standardised,  
540 researcher-selected stimuli.

541 Curiously, [12] reported no significant benefits for RPE, despite utilising auditory-motor  
542 coupling strategies. This discrepancy may find alignment with Dual-Mode Theory, as even  
543 though music can enhance automatic synchronisation and facilitate improved physical  
544 performance, it does not always mitigate RPE if reflective processes (e.g., cognitive appraisal  
545 of effort) are less engaged [13]. The substantial heterogeneity within the affective valence  
546 cluster, driven by variability in musical strategies, participant demographics, and inconsistent  
547 measurement tools (e.g., MDMQ, IMI, FS), further supports Affective-Reflective Theory's  
548 (ART) assertion that individual and contextual factors critically shape affective outcomes  
549 during exercise.

550 All studies in the affective valence cluster were deemed to have a moderate risk of bias.  
551 Furthermore, the reliance on measurement scales without strong theoretical grounding, as  
552 noted in [12], suggests the need for alignment with validated frameworks such as ART. For  
553 instance, the Feeling Scale (FS) used by [52] directly measures the pleasure-displeasure  
554 dimensions central to ART, aligning with validated frameworks in physical activity and

555 exercise contexts [68]. The FS provides a theoretically robust and context-specific assessment  
556 of affective responses, capturing the transient emotional states during exercise that ART  
557 posits are critical for shaping future behavioural intentions. These findings tentatively  
558 indicate that these PIMS leverage momentary affective responses to improve exercise  
559 experiences [6,7,17]. In sum, findings across the physical activity and affective valence meta-  
560 analytic clusters suggest PIMS may support affect augmentation during physical activity,  
561 highlighting their potential to enhance both physical activity levels and affective outcomes  
562 [5,17].

## 563 **PIMS tempo adjustments and synchronisation in physical activity** 564 **and exercise outcomes**

565 The identification of faster music tempi as a statistically significant moderator in the meta-  
566 regression aligns with evidence supporting the role of synchronisation strength and auditory-  
567 motor coupling in enhancing exercise outcomes [8,45]. For instance, faster tempi provide  
568 consistent rhythmic cues that facilitate the alignment of motor actions with auditory stimuli.  
569 This can optimise auditory-motor coupling [8–10] which, in turn, enables predictive  
570 synchronisation to reduce RPE [7]. For example, [52] reported that real-time tempo  
571 adjustments based on heart rate significantly reduced RPE and improved affective responses.  
572 This indicates that synchronised music facilitated participants' dissociation from internal  
573 sensory signals and promoted enjoyment during exercise [7].

## 574 **Limitations and future directions**

575 This review presents the first systematic exploration of PIMS exclusively within physical,  
576 psychophysical, and affective domains of physical activity and exercise. While it provides  
577 valuable insights, several limitations must be acknowledged. A significant proportion of the  
578 included studies (14 out of 18) primarily assessed the feasibility of PIMS, with few

579 investigating direct outcomes related to physical activity or exercise. Many experimental  
580 studies were limited by short durations, small sample sizes, and insufficiently rigorous  
581 methodologies. Similarly, proof-of-concept and user-testing studies largely focused on  
582 system feasibility rather than assessing objective psychophysiological outcomes.  
583 Consequently, the high risk of bias in 10 studies underscores the overall low quality of  
584 evidence. Additionally, the small number of eligible studies precluded sensitivity analyses  
585 which further emphasises the preliminary nature of this review's findings.  
586 Few studies identified physical activity as a primary outcome, often relegating it to secondary  
587 importance. Objective assessments of physical activity—such as measures of frequency,  
588 intensity, and duration—were notably absent, making it difficult to draw robust conclusions  
589 or compare results across studies. Standardising methods for quantifying physical activity  
590 would enhance future research by enabling more meaningful cross-study comparisons.  
591 Furthermore, the methodology used in this study was limited by substantial heterogeneity  
592 across studies. This prevents a unified meta-analysis and necessitates the reporting of  
593 separate outcomes. Variability in study designs, participant demographics, and measurement  
594 tools contributed to unexplained heterogeneity, while the small number of studies precluded  
595 sensitivity analyses. These factors, combined with the exploratory nature of the meta-  
596 analysis, point to the need for standardised methodologies and rigorous reporting in future  
597 research.  
598 To address these limitations, future research should prioritise larger, randomised controlled  
599 trials with diverse populations and longer intervention periods. Longitudinal studies are  
600 particularly needed to evaluate the sustained impact of PIMS on physical activity and  
601 exercise. Additionally, investigating the mechanisms underlying individual variability in  
602 PIMS responses could optimise these systems for different populations and exercise contexts.  
603 This highlights the need for more rigorous research to validate these effects and refine PIMS

604 interventions, particularly through the development of dynamic systems that can adapt tempo  
605 in real time to suit diverse user needs and exercise contexts [59,67].  
606 Emerging trends in PIMS, such as music recommender systems examined by [47–49],  
607 highlight the potential for integration with streaming services such as Spotify. These systems  
608 demonstrated promising user feedback [48] and feasibility, suggesting they could serve as a  
609 foundation for future hypothesis-driven studies. Incorporating feedback from wearable and  
610 smartphone devices offers another avenue for development, allowing PIMS to adapt based on  
611 physical activity and exercise metrics as well as music preferences. Finally, many PIMS are  
612 relatively low-cost interventions (e.g., the devices in the [50] study cost approximately \$75  
613 per patient) and could have significant cost-effectiveness implications as part of broader  
614 health policy strategies to enhance physical activity and exercise participation at the  
615 population level [5].

## 616 **Conclusions**

617 This systematic review provides exploratory evidence that PIMS may positively impact  
618 physical activity levels and affective valence in physical activity and exercise contexts. The  
619 meta-analysis revealed moderate effect sizes for physical activity levels and significant but  
620 heterogeneously distributed effects for affective valence. However, outcomes for RPE and  
621 physical exertion were inconclusive due to high heterogeneity and limited study quality.  
622 The findings are constrained by methodological limitations, including high risk of bias, small  
623 sample sizes, short study durations, and inconsistent measures across studies. Furthermore,  
624 the lack of theoretical frameworks for informing PIMS designs and the absence of  
625 standardisation in quantifying physical activity outcomes limit the generalisability of these  
626 findings. PIMS remain considerably underexplored, and further research is essential.  
627 Overall, PIMS provide promising potential for enhancing physical activity levels and  
628 elevated affective valence, offering engaging physical activity and exercise opportunities for

629 the public at large. With advancements in adaptive systems capable of real-time tempo  
630 adjustments, PIMS may emerge as effective adjuncts for physical activity and exercise,  
631 pending rigorous validation in diverse populations.

## Author Contributions

**Conceptualisation:** Andrew Danso, Tiia Kekäläinen, Geoff Luck, Sebastien Chastin

**Methodology:** Andrew Danso, Tiia Kekäläinen, Geoff Luck

**Investigation:** Andrew Danso, Tiia Kekäläinen, Iballa Burunat, Pedro Neto, Anastasios Mavrolampados, William M. Randall

**Data Curation:** Andrew Danso, Tiia Kekäläinen, Patti Nijhuis, Iballa Burunat, Pedro Neto, Anastasios Mavrolampados, William M. Randall

**Formal Analysis:** Andrew Danso, Keegan Knittle

**Writing - Original Draft:** Andrew Danso, Friederike Koehler, Patti Nijhuis, Rebekah Rousi, Kat Agres, Jennifer MacRitchie, Niels Chr. Hansen

**Writing - Review & Editing:** Andrew Danso, Tiia Kekäläinen, Friederike Koehler, Keegan Knittle, Patti Nijhuis, Iballa Burunat, Pedro Neto, Anastasios Mavrolampados, William M. Randall, Niels Chr. Hansen, Alessandro Ansani, Timo Rantalainen, Vinoo Alluri, Martin Hartmann, Rebecca S. Schaefer, Johanna Ihalainen, Rebekah Rousi, Kat Agres, Jennifer MacRitchie, Petri Toiviainen, Suvi Saarikallio, Sebastien Chastin, Geoff Luck

## References

1. Bull FC, Al-Ansari SS, Biddle S, Borodulin K, Buman MP, Cardon G, et al. World Health Organization 2020 guidelines on physical activity and sedentary behaviour. *Br J Sports Med.* 2020;54: 1451–1462. doi:10.1136/bjsports-2020-102955
2. Posadzki P, Pieper D, Bajpai R, Makaruk H, Könsgen N, Neuhaus AL, et al. Exercise/physical activity and health outcomes: an overview of Cochrane systematic reviews. *BMC Public Health.* 2020;20: 1724–1724. doi:10.1186/s12889-020-09855-3
3. Caspersen CJ, Powell KE, Christenson GM. Physical Activity, Exercise, and Physical Fitness: Definitions and Distinctions for Health-Related Research. *Public Health Rep* 1974-. 1985;100: 126–131.
4. Chase JAD. Systematic review of physical activity intervention studies after cardiac rehabilitation. *J Cardiovasc Nurs.* 2011;26: 351–358.  
doi:10.1097/JCN.0b013e3182049f00
5. Moy ML, Teylan M, Weston NA, Gagnon DR, Garshick E. Daily Step Count Predicts Acute Exacerbations in a US Cohort with COPD. *PLoS ONE.* 2013;8.  
doi:10.1371/journal.pone.0060400
6. Clark IN, Taylor NF, Peiris CL. Music listening interventions for physical activity: a systematic review and meta-analysis of randomised controlled trials. *Disabil Rehabil.* 2024;46: 13–20. doi:10.1080/09638288.2022.2155715
7. Terry PC, Karageorghis CI, Curran ML, Martin OV, Parsons-Smith RL. Effects of music in exercise and sport: A meta-analytic review. *Psychol Bull.* 2020;146: 91–117.  
doi:10.1037/bul0000216



8. Bood RJ, Nijssen M, van der Kamp J, Roerdink M. The Power of Auditory-Motor Synchronization in Sports: Enhancing Running Performance by Coupling Cadence with the Right Beats. *PLoS ONE*. 2013;8. doi:10.1371/journal.pone.0070758
9. Karageorghis CI, Priest D-L. Music in the exercise domain: a review and synthesis (Part I). *Int Rev Sport Exerc Psychol*. 2012;5: 44–66. doi:10.1080/1750984X.2011.631026
10. Edworthy J, Waring H. The effects of music tempo and loudness level on treadmill exercise. *Ergonomics*. 2006;49: 1597–1610. doi:10.1080/00140130600899104
11. Khalfa S, Roy M, Rainville P, Dalla Bella S, Peretz I. Role of tempo entrainment in psychophysiological differentiation of happy and sad music? *Int J Psychophysiol*. 2008;68: 17–26. doi:10.1016/j.ijpsycho.2007.12.001
12. Van Der Vlist B, Bartneck C, Mäueler S. moBeat: Using interactive music to guide and motivate users during aerobic exercising. *Appl Psychophysiol Biofeedback*. 2011;36: 135–145. doi:10.1007/s10484-011-9149-y
13. Ekkekakis P. Pleasure and displeasure from the body: Perspectives from exercise. *Cogn Emot*. 2003;17: 213–239. doi:10.1080/02699930302292
14. Russell JA. Core affect and the psychological construction of emotion. *Psychol Rev*. 2003;110: 145–172. doi:10.1037/0033-295X.110.1.145
15. Brand R, Ekkekakis P. Affective–Reflective Theory of physical inactivity and exercise. *Ger J Exerc Sport Res*. 2018;48: 48–58. doi:10.1007/s12662-017-0477-9
16. Karageorghis CI. The scientific application of music in exercise and sport: Towards a new theoretical model. *Sport Exerc Psychol 2nd Ed*. 2016; 276–322.

17. Karageorghis CI. Music-Related Interventions in the Exercise Domain. Handbook of Sport Psychology. Wiley; 2020. pp. 929–949. doi:10.1002/9781119568124.ch45
18. Agres KR, Schaefer RS, Volk A, van Hooren S, Holzapfel A, Dalla Bella S, et al. Music, Computing, and Health: A Roadmap for the Current and Future Roles of Music Technology for Health Care and Well-Being. Music Sci. 2021;4: 205920432199770–205920432199770. doi:10.1177/2059204321997709
19. Danso A. The Use of Technology in Music-based Interventions for Health and Education. Dissertation, University of Jyväskylä. 2023.
20. Marcus B, Owen N, Forsyth L, Cavill N, Fridinger F. Physical activity interventions using mass media, print media, and information technology. Am J Prev Med. 1998;15: 362–378. doi:10.1016/S0749-3797(98)00079-8
21. Wijnalda G, Pauws S, Vignoli F, Stuckenschmidt H. A personalized music system for motivation in sport performance. IEEE Pervasive Comput. 2005;4: 26–32. doi:10.1109/MPRV.2005.47
22. Rehfeld K, Hans Fritz T, Prinz A, Schneider L, Villringer A, Witte K. Musical feedback system Jymmin® leads to enhanced physical endurance in the elderly-A feasibility study. 2022.
23. Laranjo L, Ding D, Heleno B, Kocaballi B, Quiroz JC, Tong HL, et al. Do smartphone applications and activity trackers increase physical activity in adults? Systematic review, meta-analysis and metaregression. Br J Sports Med. 2021;55: 422–432. doi:10.1136/bjsports-2020-102892

24. Michie S, Richardson M, Johnston M, Abraham C, Francis J, Hardeman W, et al. The Behavior Change Technique Taxonomy (v1) of 93 Hierarchically Clustered Techniques: Building an International Consensus for the Reporting of Behavior Change Interventions. *Ann Behav Med.* 2013;46: 81–95. doi:10.1007/s12160-013-9486-6
25. Ziv G, Lidor R. Music, Exercise Performance, and Adherence in Clinical Populations and in the Elderly: A Review. *J Clin Sport Psychol.* 2011;5: 1–23. doi:10.1123/jcsp.5.1.1
26. Page MJ, McKenzie JE, Bossuyt PM, Boutron I, Hoffmann TC, Mulrow CD, et al. The PRISMA 2020 statement: an updated guideline for reporting systematic reviews. *BMJ.* 2021; n71–n71. doi:10.1136/bmj.n71
27. van de Schoot R, de Bruin J, Schram R, Zahedi P, de Boer J, Weijdemans F, et al. An open source machine learning framework for efficient and transparent systematic reviews. *Nat Mach Intell.* 2021;3: 125–133. doi:10.1038/s42256-020-00287-7
28. Ouzzani M, Hammady H, Fedorowicz Z, Elmagarmid A. Rayyan—a web and mobile app for systematic reviews. *Syst Rev.* 2016;5: 210–210. doi:10.1186/s13643-016-0384-4
29. Bassett DR, Troiano RP, McClain JJ, Wolff DL. Accelerometer-based Physical Activity: Total Volume per Day and Standardized Measures. *Med Sci Sports Exerc.* 2015;47: 833–838. doi:10.1249/MSS.0000000000000468
30. Kujala UM, Pietilä J, Myllymäki T, Mutikainen S, Föhr T, Korhonen I, et al. Physical Activity: Absolute Intensity versus Relative-to-Fitness-Level Volumes. *Med Sci Sports Exerc.* 2017;49: 474–481. doi:10.1249/MSS.0000000000001134

31. Hardy CJ, Rejeski WJ. Not What, but How One Feels: The Measurement of Affect during Exercise. *J Sport Exerc Psychol.* 1989;11: 304–317. doi:10.1123/jsep.11.3.304
32. Steyer R, Schwenkmezger P, Notz P, Eid M. Development of the Multidimensional Mood State Questionnaire (MDBF). Primary dataEntwicklung des Mehrdimensionalen Befindlichkeitsfragebogens (MDBF). Primärdatensatz. ZPID Leibniz Institute for Psychology; 2003. doi:10.5160/PSYCHDATA.SRRF91EN15
33. Ekkekakis P, Petruzzello SJ. Analysis of the affect measurement conundrum in exercise psychology. *Psychol Sport Exerc.* 2000;1: 71–88. doi:10.1016/S1469-0292(00)00010-8
34. Fritz TH, Halfpaap J, Grahl S, Kirkland A, Villringer A. Musical feedback during exercise machine workout enhances mood. *Front Psychol.* 2013;4. doi:10.3389/fpsyg.2013.00921
35. Nystoriak MA, Bhatnagar A. Cardiovascular Effects and Benefits of Exercise. *Front Cardiovasc Med.* 2018;5: 135. doi:10.3389/fcvm.2018.00135
36. Borg G. Perceived exertion as an indicator of somatic stress. *Scand J Rehabil Med.* 1970;2: 92–98.
37. Borg G. Psychophysical bases of perceived exertion. *Med Sci Sports Exerc.* 1982;14: 377–381.
38. Grammatopoulos T, Hunter JWS, Munn Z, Stone JC, Barker TH. Reporting quality and risk of bias in JBI systematic reviews evaluating the effectiveness of interventions: a methodological review protocol. *JBI Evid Synth.* 2023;21: 584–591. doi:10.11124/JBIES-22-00317

39. Campbell M, McKenzie JE, Sowden A, Katikireddi SV, Brennan SE, Ellis S, et al. Synthesis without meta-analysis (SWiM) in systematic reviews: reporting guideline. *BMJ*. 2020; 16890. doi:10.1136/bmj.16890
40. Wilson, D. Practical Meta-Analysis Effect Size Calculator. In: Practical Meta-Analysis Effect Size Calculator [Online calculator, version 2023.11.27] [Internet]. 27 Nov 2023 [cited 4 Apr 2024]. Available: <https://campbellcollaboration.org/research-resources/effect-size-calculator.html>
41. Bender R, Friede T, Koch A, Kuss O, Schlattmann P, Schwarzer G, et al. Methods for evidence synthesis in the case of very few studies. *Res Synth Methods*. 2018;9: 382–392. doi:10.1002/jrsm.1297
42. Borenstein M. How to understand and report heterogeneity in a meta-analysis: The difference between I-squared and prediction intervals. *Integr Med Res*. 2023;12: 101014. doi:10.1016/j.imr.2023.101014
43. Sterne JAC, Egger M. Funnel plots for detecting bias in meta-analysis. *J Clin Epidemiol*. 2001;54: 1046–1055. doi:10.1016/S0895-4356(01)00377-8
44. Sterne JAC, Harbord RM. Funnel Plots in Meta-analysis. *Stata J Promot Commun Stat Stata*. 2004;4: 127–141. doi:10.1177/1536867X0400400204
45. Elliott D. Music During Exercise: Does Tempo Influence Psychophysical Responses? 2007.
46. Jetté M, Sidney K, Blümchen G. Metabolic equivalents (METs) in exercise testing, exercise prescription, and evaluation of functional capacity. *Clin Cardiol*. 1990;13: 555–565. doi:10.1002/clc.4960130809

47. Álvarez P, Zarazaga-Soria FJ, Baldassarri S. Mobile music recommendations for runners based on location and emotions: The DJ-Running system. *Pervasive Mob Comput.* 2020;67. doi:10.1016/j.pmcj.2020.101242
48. Fang J, Grunberg D, Lui S, Wang Y. Development of a music recommendation system for motivating exercise. Institute of Electrical and Electronics Engineers Inc.; 2018. pp. 83–86. doi:10.1109/ICOT.2017.8336094
49. Ospina-Bohórquez A, Gil-González AB, Moreno-García MN, de Luis-Reboredo A. Context-aware music recommender system based on automatic detection of the user’s physical activity. Springer; 2021. pp. 142–151. doi:10.1007/978-3-030-53036-5\_15
50. Alter DA, O’Sullivan M, Oh PI, Redelmeier DA, Marzolini S, Liu R, et al. Synchronized personalized music audio-playlists to improve adherence to physical activity among patients participating in a structured exercise program: a proof-of-principle feasibility study. *Sports Med - Open.* 2015;1. doi:10.1186/s40798-015-0017-9
51. Carôt A, Fritz TH, Englert K. Towards a System Supporting Music Feedback Exercise in Physical Tele-Rehabilitation. Institute of Electrical and Electronics Engineers (IEEE); 2023. pp. 1–7. doi:10.1109/ieeeeconf59510.2023.10335285
52. Chen Y, Chen CC, Tang LC, Chieng WH. Mid-Distance Running Exercise Assistance System via IoT and Exercise-oriented Music. Institute of Electrical and Electronics Engineers Inc.; 2023. pp. 264–272. doi:10.1109/AIIoT58121.2023.10174324
53. Chen L-Y, Tung Y-J, Jang J-SR. MART-Music Assisted Run Trainer. 2014.
54. Jun S, Rew J, Hwang E. Runner’s Jukebox: A Music Player for Running Using Pace Recognition and Music Mixing. 2015.

55. Maculewicz J, Serafin S. A Stationary Bike in Augmented Audio Reality. Association for Computing Machinery; 2015. pp. 164–167. doi:10.1145/2838944.2838984
56. Maes P-J, Lorenzoni V, Six J. The SoundBike: musical sonification strategies to enhance cyclists' spontaneous synchronization to external music. *J Multimodal User Interfaces*. 2019;13: 155–166. doi:10.1007/s12193-018-0279-x
57. Mendoza JI, Danso A, Luck G, Rantalainen T, Palmberg L, Chastin S. Musification of Accelerometry Data Towards Raising Awareness of Physical Activity. 2022 [cited 16 Dec 2024]. doi:10.5281/ZENODO.7243875
58. Moens Leon van Noorden Marc Leman IPEM B. D-JOGGER: SYNCING MUSIC WITH WALKING. Universidad Pompeu Fabra.; 2010. pp. 451–456. Available: <http://www.yamaha.com/bodibeat/>
59. Moens B, Muller C, Van Noorden L, Franěk M, Celie B, Boone J, et al. Encouraging spontaneous synchronisation with D-jogger, an adaptive music player that aligns movement and music. *PLoS ONE*. 2014;9. doi:10.1371/journal.pone.0114234
60. Ren X, Lu Y, Visser V, Le PDH, Van Den Burg R. Interaction matters? Exploring interactive music as a reminder to break sedentary office time. *International Association for Automation and Robotics in Construction I.A.A.R.C*); 2017. pp. 1099–1106. doi:10.22260/isarc2017/0151
61. Rosseland RB. Rune B. Rosseland Design and evaluation of an interactive music system for exercise and physical activity with Alzheimer's patients. 2016 pp. 1904–500. Available: [www.soundeffects.dk](http://www.soundeffects.dk)

62. Ryan RM, Mims V, Koestner R. Relation of reward contingency and interpersonal context to intrinsic motivation: A review and test using cognitive evaluation theory. *J Pers Soc Psychol.* 1983;45: 736–750. doi:10.1037/0022-3514.45.4.736
63. McAuley E, Duncan T, Tammen VV. Psychometric Properties of the Intrinsic Motivation Inventory in a Competitive Sport Setting: A Confirmatory Factor Analysis. *Res Q Exerc Sport.* 1989;60: 48–58. doi:10.1080/02701367.1989.10607413
64. McGuinness LA, Higgins JPT. Risk-of-bias VISualization (robvis): An R package and Shiny web app for visualizing risk-of-bias assessments. *Res Synth Methods.* 2021;12: 55–61. doi:10.1002/jrsm.1411
65. Cumpston M, Li T, Page MJ, Chandler J, Welch VA, Higgins JP, et al. Updated guidance for trusted systematic reviews: a new edition of the Cochrane Handbook for Systematic Reviews of Interventions. Cochrane Editorial Unit, editor. *Cochrane Database Syst Rev.* 2019 [cited 16 Dec 2024]. doi:10.1002/14651858.ED000142
66. Egger M, Smith GD, Schneider M, Minder C. Bias in meta-analysis detected by a simple, graphical test. *bmj.* 1997;315: 629–634.
67. Clark IN, Baker FA, Taylor NF. The modulating effects of music listening on health-related exercise and physical activity in adults: a systematic review and narrative synthesis. *Nord J Music Ther.* 2016;25: 76–104. doi:10.1080/08098131.2015.1008558
68. Bastos V, Rodrigues F, Davis P, Teixeira DS. Assessing affective valence and activation in resistance training with the feeling scale and the felt arousal scale: A systematic review. Kanawjia P, editor. *PLOS ONE.* 2023;18: e0294529. doi:10.1371/journal.pone.0294529



## Supporting information

### S1 Appendix. Operationalisation of Terms

- **Physical activity level** encompasses the volume, intensity, and compliance with physical activity recommendations or exercise regimens. Volume represents the overall amount of physical activity, and can be measured using metrics such as mean total counts per day [29]. Intensity can be categorised as absolute intensity using metabolic equivalents (METs) or relative intensity expressed as a percentage of an individual's maximum oxygen uptake reserve (%VO<sub>2</sub>R, [30]). Compliance, referring to adherence to recommendations or regimens, can be assessed by tracking changes in physical activity volume, monitoring device usage, or measuring adherence to target heart-rate zones during physical activity or acute bouts of physical exercise [29].
- **Affective valence** refers to the emotional response of pleasure or displeasure experienced during or after physical activity. It focuses specifically on the valence dimension of emotional states—how positive or negative the feeling is—without incorporating arousal (activation). Affective valence captures moment-to-moment changes in an individual's subjective emotional state as they engage in physical activity. For instance, physical activity often elicits feelings of pleasure (positive affect), though the intensity and context of the activity, as well as individual differences, influence these responses.
- **Rating of perceived exertion (RPE)** is a subjective numerical value that individuals assign to their sense of how hard their body is working during physical activity [7,37]. It is formed from a multitude of sensory cues, integrating both physiological sensations and psychological perceptions [37]. Sensations from muscles, skin, and joints, and effects stemming from the cardio-pulmonary system all contribute to this overall

perception. The Borg RPE scale is specifically designed to measure perceived exertion during steady-state aerobic exercise, such as cycling or running. The commonly used Borg CR-10 scale, is a category-ratio scale, designed to measure the perceived intensity of various sensations, experiences, and feelings. Its primary application is in assessing perceived exertion but can also gauge other subjective experiences.

- **Physical exertion** is the effort exerted by the body to perform physical activity, characterised by the physiological, biomechanical, and perceptual demands placed on the individual [35]. Heart rate is a fundamental physiological indicator of exertion, reflecting the cardiovascular system's response to physical demands [35]. Stride length and pace are essential biomechanical parameters, particularly in activities such as running and walking [35].

## S2 Appendix. Description of the outcome measures used in the studies.

- **Physical Activity Level:** [50] measured physical activity level by mean weekly minutes of physical activity, which was captured using a tri-axial accelerometer worn by the participants. [22] measured physical activity level through the duration of exercise until exhaustion, timed with a stopwatch. [12] measured compliance with a prescribed exercise regime by monitoring participants' adherence to target heart rate zones during a cycling session.
- **Affective valence:** [52] measured affective valence using the Feeling Scale (FS). The FS is based on Russell's circumplex model of affect [14,33]. The FS assesses affective valence (how positive or negative someone feels). [22,34] used the Multidimensional Mood Questionnaire (MDMQ) [32] to study the effects of PIMS on mood during acute bouts of physical exercise. The MDMQ includes subscales for "good vs. bad mood," "calmness vs. agitation," and "alertness vs. tiredness." While the MDMQ's three subscales generally correspond to the circumplex model of affect [14,33] only the "good vs. bad mood" subscale was used, as it specifically aligns with the pleasure-displeasure (affective valence) dimension of affect. [12] examined the effect of PIMS on intrinsic motivation using an "interest/enjoyment" subscale of the Intrinsic Motivation Inventory (IMI) [62] during acute bouts of physical exercise. While not a direct measurement of affect, this subscale reflects positive valence and enjoyment, aligning broadly with the pleasure (affective valence) dimension of affect [63].
- **RPE:** All three studies that assessed Rating of Perceived Exertion (RPE) used the Borg CR-10 scale to capture participants' subjective experience of exercise intensity. [22,52] both employed the scale, with [52] collecting RPE ratings at specific time intervals during the exercise, while [22] opted for more frequent measurements every 90 seconds and at the conclusion of the exercise. [12] also utilised the Borg CR-10

scale, though the precise timing of their measurements is not detailed.

- **Physical Exertion:**[52] measured heart rate as a physiological measure of exertion using a Polar Verity Sense upper-arm heart-rate measurement device based on photoplethysmography (PPG). [54] measured pace by calculating Swings Per Minute (SWPM) using data from the accelerometer on a smartphone. [12] measured heart rate via a Polar T61 heart rate belt.

## S1 Table. Descriptions and outcomes of the PIMS used in the nine experimental studies.

| Reference | PIMS Used                         | PIMS Description                                                                                                                                                   | Outcomes                                                                                                                                                                                                                                                                                                                                                                                                                                           |
|-----------|-----------------------------------|--------------------------------------------------------------------------------------------------------------------------------------------------------------------|----------------------------------------------------------------------------------------------------------------------------------------------------------------------------------------------------------------------------------------------------------------------------------------------------------------------------------------------------------------------------------------------------------------------------------------------------|
| [50]      | Music audio-playlists             | Personalised music audio-playlists to improve adherence to physical activity among cardiovascular disease patients participating in a structured exercise program. | Control (No Music), 370.2 minutes, $p < .001^a$<br>Music Playlists, 475.6 minutes, $p < .001^a$<br>Music Playlists with RAS, 631.3 minutes                                                                                                                                                                                                                                                                                                         |
| [53]      | Music Assisted Run Trainer (MART) | A smartphone application, to assist jogging activity by adapting music tempo based on the user's step frequency or heart rate.                                     | Aligning music tempo with step frequency – targeting optimal heart rate for cardiovascular training.                                                                                                                                                                                                                                                                                                                                               |
| [48]      | Music Recommendation System       | A music recommendation system to motivate individuals to exercise more effectively by incorporating user profiling and reinforcement learning.                     | Improved satisfaction with playlists, reduced number of rejections needed to finalise a playlist.                                                                                                                                                                                                                                                                                                                                                  |
| [34]      | Jymmin®                           | Exercise with musical feedback                                                                                                                                     | Significant main effect of the "jymmin" condition on mood enhancement vs. passive listening, with a reported $F(1, 43) = 10.67$ , $p < .05$                                                                                                                                                                                                                                                                                                        |
| [56]      | SoundBike                         | A stationary bicycle system designed to enhance cyclists' spontaneous synchronisation with external music through musical sonification                             | Sonification using a beep at the point of maximum pedal pressure significantly increased cyclists' synchronisation strength with external music compared to no sonification ( $p < .05$ ) and improved pedal cadence stability ( $p < .05$ ). The beep condition resulted in a medium to large effect size for synchronisation and stability compared to other conditions.                                                                         |
| [59]      | D-Jogger                          | An adaptive music player designed to align music with the user's walking or running pace.                                                                          | Alignment Strategy 1 – Minor increase in steps synchronised with beat.<br>Alignment Strategy 2 – Minor increase in steps synchronised with beat.<br>Alignment Strategy 3 – Tempo adjusts to match runner's pace throughout. Increase in synchronised steps; high phase-lock stability.<br>Alignment Strategy 4 – Adjusts phase and tempo during song to match each beat to footfall. Increase in synchronised steps; highest phase-lock stability. |
| [22]      | Jymmin®                           | Exercise with musical feedback                                                                                                                                     | Participants exercised significantly longer with Jymmin® (Jymmin® workout 248.75 seconds vs. Conventional workout 182.73 seconds)                                                                                                                                                                                                                                                                                                                  |
| [60]      | Flow Platform (Smart Cushion)     | A flow platform (a smart cushion) which used interactive music to cue office workers to reduce their sedentary time.                                               | Both interactive and continuous music were similarly effective in motivating posture changes and reducing sedentary behaviour.                                                                                                                                                                                                                                                                                                                     |
| [12]      | MoBeat                            | Intensity-based coaching during exercise by giving real-time feedback on training pace and intensity through interactive music.                                    | The moBeat system was found to have a significant positive effect on intrinsic motivation ( $p < .001$ ) and attentional focus ( $p < .001$ ) during exercise. The moBeat system did not significantly reduce perceived exertion ( $p = .266$ ) compared to the reference system.                                                                                                                                                                  |

<sup>a</sup>=  $p$ -value compares music playlists vs. a control group with no music. The  $p$ -value for the RAS-enhanced group compared to the others is not specified here but indicated as significant in the study.

## S2 Table. Descriptions and outcomes of the PIMS used in the nine Proof of Concept and User Testing Studies.

| Reference | PIMS Used                                                            | PIMS Description                                                                                                                                                                                                                                               | Outcomes                                                                                                                                                                                                      |
|-----------|----------------------------------------------------------------------|----------------------------------------------------------------------------------------------------------------------------------------------------------------------------------------------------------------------------------------------------------------|---------------------------------------------------------------------------------------------------------------------------------------------------------------------------------------------------------------|
| [47]      | The DJ Running System                                                | The system dynamically adapts music using sensor data from physical movements or exercise equipment.                                                                                                                                                           | N/A                                                                                                                                                                                                           |
| [51]      | Music Feedback Exercise (MFE)                                        | The study integrates MFE into Soundjack, using sensors to modulate music playback based on exercise intensity.                                                                                                                                                 | Positive feedback on system responsiveness and music integration.                                                                                                                                             |
| [52]      | Music-Assisted Internet of Things (IoT) Exercise System              | The system adapts music tempo in real-time to the runner's heart rate.                                                                                                                                                                                         | N/A                                                                                                                                                                                                           |
| [54]      | Runner's Jukebox (RJ)                                                | RJ uses a pace recognition algorithm enabling the music player to play songs matched with the user pace and adjust playback speed dynamically to follow the user's pace changes.                                                                               | Fixed BPM and pace matching gave better exercise effect (SWPM) vs. no music and vs. randomly selected music                                                                                                   |
| [55]      | A Stationary bike augmented in an audio reality environment.         | The use of sensors to monitor the user's pace and heart rate while exercising on a stationary bike. Audio feedback and cues are manipulated based on the user's performance.                                                                                   | N/A                                                                                                                                                                                                           |
| [58]      | DJogger                                                              | A music interface to leverage body movement in order to select music and adapt its tempo to the user's pace, focusing on entrainment – synchronisation between music and walking.                                                                              | The majority of subjects synchronised to the beats, no matter what the users' pace.<br><br>If the music tempo is close enough to the user's pace, the user tends to synchronise his/her steps with the beats. |
| [57]      | Sonification of accelerometry data (recordings of physical activity) | This system transforms daily physical activity data recorded by wearable devices into musical pieces.                                                                                                                                                          | The majority of participants correctly identified the musical sonification associated with physical activity.                                                                                                 |
| [49]      | Context-Aware Music Recommender System (CAMRS)                       | The system classified physical activities by analysing data from the smartphone's accelerometer, allowing it to predict the user's activity. It recommends music with a Beats Per Minute (BPM) value to match the intensity of the detected physical activity. | When using the system, rates of perceived effort decreased in the majority of cases, and mood improved in the majority of cases.                                                                              |
| [61]      | Interactive Music System for Alzheimer's patients                    | This music system for Alzheimer's patients, focuses on how dynamically adapting musical beats and rhythms can stimulate and motivate physical activity. The system adapts the tempo of music to match the pace of repetitive bodily movements.                 | The interactive music system produces an entraining effect on participants.                                                                                                                                   |