

Title: Alcohol use disorder and body mass index show genetic pleiotropy and shared neural associations

Authors: *Samantha G. Malone, PhD^{1,2}; *Christal N. Davis, PhD^{3,4}; Zachary Piserchia, MS^{1,2}; Michael R. Setzer, ScM¹; Sylvanus Toikumo, PhD^{3,4}; Hang Zhou, PhD^{5,6,7}; Emma L. Winterlind, MPS^{1,2}; Joel Gelernter, MD^{5,6}, Amy Justice, MD, PhD^{5,8,9}; Lorenzo Leggio, MD, PhD^{10,11,12,13}; Christopher T. Rentsch, PhD^{8,14}; Henry R. Kranzler, MD^{3,4}; Joshua C. Gray, PhD¹

*Equal contributions

Affiliations:

¹ Uniformed Services University of the Health Sciences, Department of Medical and Clinical Psychology, Bethesda, MD 20814, United States

² Henry M. Jackson Foundation for the Advancement of Military Medicine Inc., Bethesda, MD 20817, United States

³ Mental Illness Research, Education and Clinical Center, Crescenz VA Medical Center, Philadelphia, PA 19104, United States

⁴ Perelman School of Medicine, University of Pennsylvania, Philadelphia, PA 19104, United States

⁵ Veterans Affairs Connecticut Healthcare System, West Haven, CT 06516, United States

⁶ Department of Psychiatry, Yale University School of Medicine, New Haven, CT 06511, United States

⁷ Department of Biomedical Informatics and Data Science, Yale University School of Medicine, New Haven, CT 06510, United States

⁸ Department of Medicine, Yale University School of Medicine, New Haven, CT 06510, United States

⁹ Yale University School of Public Health, New Haven, CT 06510, United States

¹⁰ Clinical Psychoneuroendocrinology and Neuropsychopharmacology Section, Translational Addiction Medicine Branch, National Institute on Drug Abuse and National Institute on Alcohol Abuse and Alcoholism, National Institutes of Health, Baltimore, MD 21224, United States

¹¹ Center for Alcohol and Addiction Studies, Department of Behavioral and Social Sciences, School of Public Health, Brown University, Providence, RI 02903, United States

¹² Division of Addiction Medicine, Department of Medicine, School of Medicine, Johns Hopkins University, Baltimore, MD 21287, United States

¹³ Department of Neuroscience, Georgetown University Medical Center, Washington, DC 20057, United States

¹⁴ London School of Hygiene & Tropical Medicine, London, WC1E 7HT, United Kingdom

Corresponding author

Joshua C. Gray, PhD

Uniformed Services University of the Health Sciences

4301 Jones Bridge Rd

Bethesda, MD 20814

Joshua.gray@usuhs.edu

410-707-1180

Funding Source: This work was supported by funding from the National Institute on Alcohol Abuse and Alcoholism (R01 AA030041 and R01 AA030056), the Department of Defense (HU0001-22-2-0066), and the Veterans Integrated Service Network 4 Mental Illness Research, Education and Clinical Center of the Crescenzo Veterans Affairs Medical Center. LL is a federal employee and is supported by the National Institute on Drug Abuse and the National Institute on Alcohol Abuse and Alcoholism Intramural Research Programs.

Disclaimer: The opinions and assertions herein are those of the authors and do not necessarily reflect the official views of the Henry M. Jackson Foundation for the Advancement of Military Medicine, Inc. Moreover, the opinions and assertions herein do not necessarily reflect the official views of the Department of Defense, Uniformed Services University, the National Institute on Alcohol Abuse and Alcoholism, the US Government, and do not imply endorsement by the Federal Government.

Disclosures: HRK is a member of advisory boards for Altimmune, Clearmind Medicine, Dicerna Pharmaceuticals, Enthion Pharmaceuticals, Lilly Pharmaceuticals, and Sophrosyne Pharmaceuticals; a consultant to Sobrera Pharmaceuticals and Altimmune; the recipient of research funding and medication supplies for an investigator-initiated study from Alkermes; and a member of the American Society of Clinical Psychopharmacology's Alcohol Clinical Trials Initiative, which was supported in the last three years by Alkermes, Dicerna, Ethypharm, Imbrium, Indivior, Kinnov, Lilly, Otsuka, and Pear. JG and HRK hold U.S. patent 10,900,082 titled: "Genotype-guided dosing of opioid agonists," issued 26 January 2021. JG is paid for editorial work for the journal *Complex Psychiatry*.

Abstract

Despite neurobiological overlap, alcohol use disorder (AUD) and body mass index (BMI) show minimal genetic correlation (r_g), possibly due to mixed directions of shared variants. We applied MiXeR to investigate shared genetic architecture between AUD and BMI, conjunctive false discovery rate (conjFDR) to detect shared loci and their directional effect, Local Analysis of (co)Variant Association (LAVA) for local r_g , Functional Mapping and Annotation (FUMA) to identify lead single nucleotide polymorphisms (SNPs), Genotype-Tissue Expression (GTEx) to examine tissue enrichment, and BrainXcan to assess associations with brain phenotypes. MiXeR indicated 82.2% polygenic overlap, despite a r_g of -.03. ConjFDR identified 132 shared lead SNPs, with 53 novel, showing both concordant and discordant effects. GTEx analyses identified overexpression in multiple brain regions. Amygdala and caudate nucleus volumes were associated with AUD and BMI. Opposing variant effects explain the minimal r_g between AUD and BMI, with implicated brain regions involved in executive function and reward, clarifying their polygenic overlap and neurobiological mechanisms.

Introduction

Alcohol use disorder (AUD) and obesity adversely impact millions of individuals and contribute to hundreds of billions of dollars in combined annual economic cost^{1,2}. The detrimental health impacts of AUD include increased risk for cancers of the liver, head, and neck; cardiovascular disease; and liver disease including cirrhosis³. Obesity, typically defined as a body mass index (BMI) of greater than 30 kg/m², is associated with increased risk for hypertension, type II diabetes, coronary artery disease, liver disease, and various cancers⁴. The weighted prevalence of co-occurring heavy alcohol consumption and obesity in the United States rose from 1.8% in 1999-2000 to 3.1% in 2017-2020, representing a 72% increase⁵.

Alcohol use disorder is thought to share pathophysiological mechanisms with unhealthy eating behavior, a primary risk factor for elevated BMI and obesity (for additional causes of excess weight, see⁶). For example, the neurotransmitter dopamine plays integral roles in both eating and alcohol-related behaviors by impacting motivation, self-regulation, and reinforcement⁷⁻⁹. Evidence of other overlapping neurocircuitry-based mechanisms that contribute to AUD and pathological overeating has also accumulated^{7,10}, which supports the concept of food addiction¹¹, though this remains controversial¹². There is also overlap in the interaction of both alcohol and food with appetite-related neuroendocrine pathways such as ghrelin^{13,14} and glucagon-like peptide-1 (GLP-1)¹⁵. Interest in this putative overlap has been heightened by recent reports that GLP-1 receptor agonists (GLP-1RAs)—approved for treating type 2 diabetes and obesity—may represent potential new pharmacotherapies for AUD¹⁶. Similarly, medications used to treat AUD reduce weight in individuals with obesity¹⁷. For example, topiramate, recommended as an off-label treatment for AUD^{18,19}, is approved in combination with phentermine as a weight loss medication.

Both AUD and obesity have substantial genetic contributions, with an estimated heritability of 50% for AUD²⁰ and 40-70% for obesity²¹. Despite shared neurobiological pathways and a high rate of co-occurrence in some populations, the genetic correlation between alcohol- and BMI-related phenotypes is non-significant^{22,23}. In the two largest studies to date, null genetic correlations were reported between obesity and problematic alcohol use (i.e., a phenotype that combines AUD diagnoses and a quantitative measure of harmful drinking; $r_g = -0.03$) and drinks per week ($r_g = 0.03$) in European-ancestry individuals^{22,23}.

Although these findings are consistent with a modest amount of shared genetic variation between the two traits, an alternative hypothesis is that the presence of shared variants with both concordant and discordant effects across the two phenotypes obscures evidence of genome-wide correlation. Other analytic methods, such as bivariate causal mixture models, are not influenced by the directionality of the variants' effects, making them more appropriate to evaluate the extent of polygenic overlap between the two conditions²⁴. For example, accounting for concordant and discordant variant effects has revealed substantial shared genetic relationships between psychiatric and medical or cognitive traits despite small or null genetic correlations²⁵.

In this study, we utilized MiXeR to investigate the overall shared genomic architecture between AUD and BMI. MiXeR is a statistical method that estimates the potential causal variants for each trait and the total degree of overlap between two traits without regard to the direction of variants' effects, thereby identifying the extent of unique and shared genetic architecture²⁴. MiXeR has been used to identify genetic overlap across multiple psychiatric disorders²⁵, psychiatric disorders and irritable bowel syndrome²⁶, and psychiatric disorders and cognitive traits such as educational attainment^{27,28}. To complement MiXeR's overarching approach, we also utilized Local Analysis of (co)Variant Association (LAVA) to estimate local

regional genetic correlations²⁹ and the conjunctive false discovery rate (conjFDR) method to identify specific overlapping loci³⁰. We hypothesized that the absence of genetic correlation between AUD and BMI is attributable to the presence of shared variants with inconsistent directions of effect and that this would be evidenced by both (1) greater genetic overlap than would be predicted by the observed genetic correlation and (2) shared loci showing a mixture of consistent and inconsistent effect directions. After testing those hypotheses, we conducted follow-up functional annotation and drug repurposing analyses on shared loci identified by conjFDR. Additionally, we examined the associations of AUD and BMI risk with brain image-derived phenotypes (IDPs) to identify potential shared neural underpinnings. In doing so, we aimed to uncover the genomic architecture and physiologic pathways shared by AUD and BMI to advance our understanding of mechanisms contributing to their comorbidity and aid in the development of physiologically-informed interventions.

Methods

Samples

We used summary statistics from two large-scale GWAS for AUD ($N = 753,248$; $N_{\text{case}} = 113,325$)²³ and BMI ($N = 681,275$)³¹. The AUD GWAS summary statistics were derived from a meta-analysis of several cohorts of individuals with AUD or alcohol dependence (AD) diagnoses and controls with no diagnosis. Despite differences in the specific criteria used for diagnosis across cohorts, the genetic correlation across diagnostic categories and cohorts was very high (Million Veteran Program AUD and Psychiatric Genomics Consortium AD $r_g = .98$)³². We excluded UK Biobank participants from the AUD GWAS to minimize the overlap of participants between the two studies and inflation by cross-trait enrichment³⁰. The BMI GWAS summary statistics were derived from a meta-analysis of two cohorts: the Genetic Investigation of Anthropometric Traits (GIANT) consortium and the UK Biobank. All participants were of

European ancestry (for more details, see original publications and Table S1). The Uniformed Services University's Human Research Protections Program Office determined the project to be considered research not involving human subjects per 32 CFR 219.102(e)(1), and applicable DoD policy guidance.

Characterizing polygenic overlap

MiXeR^{24,33} was applied to investigate the overall shared genetic architecture between AUD and BMI. Univariate MiXeR analyses were first conducted to estimate each trait's polygenicity (i.e., the number of potential causal variants required to explain 90% of single nucleotide polymorphism [SNP] heritability) and discoverability (i.e., the average estimated effect size of causal variants). Prior to performing bivariate models, we confirmed that the Akaike and Bayesian information criteria (AIC and BIC) values of the univariate models were positive, supporting sufficient power for bivariate MiXeR analyses. Next, bivariate models were implemented to identify the number of unique and shared causal variants for each pair of traits. These models also provide estimates of the proportion of causal variants with concordant directions of effect. The Dice coefficient, an indicator of the proportion of polygenic overlap, is also computed. Conditional Q-Q plots were produced to visualize cross-trait enrichment. These plots show the distribution of p-values for a primary phenotype as a function of its association with the secondary phenotype at three p-value strata ($p \leq 0.1$, 0.01, and 0.001). As a secondary analysis, we used MiXeR to examine the shared genetic architectures of AUD and BMI with other psychiatric traits (major depressive disorder, attention-deficit/hyperactivity disorder [ADHD], schizophrenia)^{27,31,34,35}. This secondary analysis shows how the shared genetic architecture of AUD and BMI compares with that of other psychiatric traits. Finally, the shared genetic architecture of AUD and BMI with left-handedness was included as a control³⁶. For all

traits, LD Score regression (LDSC) v1.0.1 was used to calculate heritability³⁷, genetic correlations, and standard errors.

Local Analysis of (co)Variant Association (LAVA) was used to estimate local heritability (h^2_{SNP}) and genetic correlations (r_g) between AUD and BMI across 2,495 approximately equal-sized linkage disequilibrium (LD) blocks²⁹. Significance of local r_g was adjusted using false discovery rate (FDR) correction³⁹.

We used conjFDR^{30,38} analysis to detect loci significantly associated with both phenotypes, including variants with opposite directions of effect. To achieve this, conditional false discovery rate (condFDR) estimates were first obtained by conditioning the primary phenotype's (i.e., AUD) test statistics on a secondary phenotype's (i.e., BMI's) SNP associations. A condFDR value for the second phenotype conditioned on the first's SNP associations was calculated by reversing the order of phenotypes from the first condFDR assessment. ConjFDR defines the value for each association as the maximum of the two condFDR values for the given SNP, providing a conservative estimate of the SNP association with both phenotypes. Statistical significance was defined as a conjFDR value < 0.05 . We performed a replication analysis of the significant loci from the conjFDR using summary statistics from FinnGen v11. Specifically, we utilized the phenotypes: "body-mass index, inverse-rank normalized" ($N = 321,672$) and "alcohol use disorder, Swedish definition" ($N = 453,733$; $N_{\text{case}} = 26,149$)³⁹. Exact binomial tests (i.e., SNP sign tests) were performed to assess whether the shared genomic loci were collectively replicated in the independent samples⁴⁰. The SNP sign test evaluates whether the directionality of allelic associations between the discovery and replication cohorts is consistent, with the null hypothesis being that the consistency of effect directions is 50%.

Genomic loci definition and gene-set enrichment

SNPs having a conjFDR < .05, indicating significant SNP effects on both AUD and BMI, were input into Functional Mapping and Annotation (FUMA) v1.5.2⁴¹ to identify LD-independent genomic loci. Independent significant SNPs were identified using a LD block distance for merging of ≤ 250 kb, $r^2 < 0.6$, and the European ancestry 1000 Genomes reference panel⁴². Of the independent SNPs, lead SNPs were identified using $r^2 < 0.1$. Each locus is represented by a single lead SNP with the lowest conjFDR value. The novelty of lead SNPs was determined by examining whether variants were genome-wide significant ($p < 5 \times 10^{-8}$) in the AUD and BMI summary statistics. Lead SNPs were assigned to genes based on presence within the gene or otherwise distance to the nearest gene transcription start site. Annotations for the lead SNPs corresponding to Variant Effect Predictor (VEP), Combined Annotation Dependent Deletion (CADD) scores, and nearest transcription start site were sourced from OpenTargets (<https://genetics.opentargets.org/> v22.10)⁴³. The presence of lead SNPs within genes was confirmed using dbGaP (<https://www.ncbi.nlm.nih.gov/gap/>). Genes linked to the lead SNPs were then used to conduct gene expression, tissue enrichment specificity, and gene-set enrichment analyses in FUMA⁴¹. Gene expression analyses used transcripts per million (TPM) normalization, which is robust to differences in library size and sequencing depth across samples. Analyses were corrected for multiple comparisons using the FDR correction.

Drug repurposing

We integrated drug-protein interaction/druggability information from the Target Central Resource Database (TCRD)⁴⁴ and OpenTargets⁴³. We searched for each gene in each database (<https://pharos.nih.gov/> v3.18.0; <https://platform.opentargets.org/> v23.12). The TCRD divides target development/druggability into four levels: (1) Tclin targets have approved drugs with

known mechanisms of action; (2) Tchem targets have drugs or small molecules that satisfy activity thresholds; (3) Tbio targets have no known drugs or small molecules that satisfy thresholds, but have Gene Ontology (GO) leaf term annotations or Online Mendelian Inheritance in Man (OMIM) phenotypes, or meet at least two of three conditions: a fractional PubMed count >5 , >3 National Center for Biotechnology Gene Reference Intro Function annotations, or >50 commercial antibodies; and (4) Tdark targets—proteins that have been manually curated in UniProt but do not meet criteria for the above categories. OpenTargets was utilized to identify approved drugs and drugs in development that target identified druggable genes.

BrainXcan

We used BrainXcan software⁴⁵ to evaluate the associations of AUD and BMI with 327 brain image-derived phenotypes (IDPs) obtained from structural (T1-weighted) and diffusion magnetic resonance imaging (dMRIs). BrainXcan infers trait-IDP associations using GWAS summary statistics, brain feature prediction weights, and reference LD data. Prediction weights for BrainXcan were derived by training a ridge regression model on brain IDPs in 24,409 individuals from the UK Biobank. Effect sizes and p-values of trait-IDP associations were adjusted using LD block-based permutation, and Bonferroni correction was used to account for multiple testing (T1: $0.05/109 = 4.59 \times 10^{-4}$; dMRI = $0.05/218 = 2.29 \times 10^{-4}$). Based on these results, we identified brain IDPs that were associated with both AUD and BMI. We also examined the concordance of effect direction for brain IDPs across the two traits.

Results

Shared global and local genomic architecture (MiXeR and LAVA)

All univariate AIC and BIC estimates were positive, with the exception of the more stringent BIC criterion for left-handedness (AIC = 3.62, BIC = -5.99), which indicated there was

sufficient power overall for conducting bivariate MiXeR models. Bivariate AUD and BMI models show that the MiXeR estimated model had improved fit compared to the minimum overlap predicted by the genetic correlation alone (best vs. minimum AIC = 91.11, best vs. minimum BIC = 82.13, where positive values indicate improved fit) and fit significantly better than the maximum overlap model, which assumes maximum overlap of causal variants, when using AIC but not when considering the more stringent BIC (best vs. maximum AIC = 4.80, best vs. maximum BIC = -4.17); see Tables S2 and S3 for full univariate and bivariate MiXeR results).

MiXeR analysis yielded an overall level of polygenic overlap between AUD and BMI of 82.2% (as quantified by the Dice coefficient) despite a minimal genetic correlation ($r_g = -0.03$, $SE = .02$). Of the 9.4K and 11.1K potential causal variants linked to AUD and BMI, respectively, 8.4K were shared by the two traits (Figure 1). The estimated proportion of shared variants with a concordant direction of effect was 48.8%. Conditional Q-Q plots demonstrated enrichment of SNP associations with AUD that increased with the significance of the associations with BMI, and vice versa for BMI, both reflecting polygenic overlap (Figure S1).

The r_g s between BMI and other psychiatric phenotypes ranged from -0.11 for schizophrenia to 0.30 for ADHD. There were substantial shared genetic variants between BMI and other traits, including 8.2K of the 10.2K schizophrenia variants (Dice coefficient = 77.3%; concordance = 45.0%), 6.7K of the 7.2K MDD variants (Dice coefficient = 73.3%; concordance = 54.6%), and 5.0K of the 7.7K ADHD variants (Dice coefficient = 53.3%; concordance = 74.8%). Finally, of the 4.2K potential causal variants linked to the control condition left-handedness, 3.3K (Dice coefficient = 43.4%; concordance = 46.8%) were shared with BMI. Of note, BMI had 7.7K potential causal variants that were not shared with left-handedness.

There were moderate genetic correlations ($r_{gs} = .35-.41$) and shared genetic variants between AUD and other psychiatric traits, including 6.4K of the 10.2K schizophrenia variants (Dice coefficient = 65.6%; concordance = 71.9%), 4.3K of the 7.2K MDD variants (Dice coefficient = 51.4%; concordance = 90.8%), and 5.4K of the 7.7K ADHD variants (Dice coefficient = 63.5%; concordance = 74.8%). Finally, of the 4.2K potential causal variants linked to the control condition left-handedness, 2.0K (Dice coefficient = 28.3%; concordance = 73.2%) were shared with AUD (Figure 1).

Of the 2,495 independent regions examined in LAVA, local h^2_{SNP} was significant ($p < .05$) in 2,293 regions for both AUD and BMI. Furthermore, local r_g between AUD and BMI was significant in 41 regions after FDR correction ($q < .05$). Just under half of these regions (19/41) had positive genetic correlations between the two phenotypes (Table S5).

Shared genetic loci (cond/conj FDR)

At conjFDR<0.05, we identified 132 significant loci associated with both AUD and BMI (Figure 2). Most (121) of these variants were not significant in the original AUD GWAS and 53 were not significant in the original BMI GWAS. Notably, all 53 loci that were novel for BMI were also novel for AUD (Table S4). Of the shared loci, 56 lead SNPs (42.4%) had consistent effect directions for AUD and BMI and 76 (57.6%) had opposite effect directions. This supports the hypothesis that the lack of genetic correlation is due to mixed effect directions of variants shared by AUD and BMI.

The two most significant loci exerted opposite directions of effect for BMI and AUD. The first was an intronic variant (rs9939973) in the well-known obesity risk gene, *FTO* (also linked to numerous other traits, including substance use disorders, major depression, and schizophrenia⁴⁶). The second was an intronic variant (rs13114738) in the highly pleiotropic gene

*SLC39A8*⁴⁷. The most significant locus (rs10511087) with a concordant direction of effect was *CADM2*, which encodes cell adhesion molecule 2 and has been linked to array of cognition, pain, substance use, and metabolic phenotypes^{48,49}.

Of the 2,495 independent regions examined in LAVA, local h^2_{SNP} was significant ($p < .05$) in 2,293 regions for both AUD and BMI. Furthermore, local r_g between AUD and BMI was significant in 41 regions after FDR correction ($q < .05$). Just under half of these regions (19/41) had positive genetic correlations between the two phenotypes (Table S5).

Replication in FinnGen

We performed replication analysis of the 132 significant loci using independent AUD ($N = 453,733$; $N_{\text{case}} = 26,149$) and BMI summary statistics ($N = 321,672$) from FinnGen v11. In the independent AUD summary statistics, 124 loci (94%) had sign concordance, 75 (57%) were nominally significant, and 55 (42%) were significant after FDR correction. In the independent BMI summary statistics, 125 loci (95%) had sign concordance, 97 (73%) were nominally significant, and 95 (72%) were significant after FDR correction (Table S4). The SNP sign tests supported the overall replication of loci effect directions across both the AUD ($p < 2.2 \times 10^{-16}$) and BMI ($p < 2.2 \times 10^{-16}$) independent cohorts. An important caveat to these analyses is that FinnGen sample is from an isolated population, and the AUD replication sample had only a quarter of the number of cases as the original discovery sample. The fact that a larger proportion of BMI loci replicated is likely attributable to more comparable sample sizes between the original and replication datasets ($321,672/681,275 = 47\%$). The consistency of replication reported here is comparable to that found in other GWAS of complex traits⁵⁰⁻⁵².

Functional annotations

The Variant Effect Predictor (VEP) analysis of the 132 lead SNPs in the loci shared between AUD and BMI indicated that 74 were intronic, 31 intergenic, 7 downstream, 6 non coding transcript exon variant, 5 missense, 4 upstream, 3 in the 3'UTR, 1 synonymous, and 1 regulatory (Table S4). Ten of the 132 variants had CADD scores > 12.37, indicating possible deleteriousness⁵³.

Analysis of Genotype-tissue Expression (GTEx)⁵⁴ samples showed that genes linked to the lead SNPs were significantly overexpressed in the brain (Figure S2). Specifically, 47 genes were significantly upregulated in the frontal cortex (BA9), hypothalamus, cortex, anterior cingulate cortex (BA24), hippocampus, and amygdala (Figures 3 and 4). Analysis of GTEx samples for the shared genes linked to concordant loci identified significant upregulation in the hypothalamus and amygdala (Figure S4). Finally, analysis of the of the shared genes linked to discordant loci identified significant upregulation in the frontal cortex (BA9), hypothalamus, cortex, anterior cingulate cortex (BA24) (Figure S5).

GO gene-set analysis identified 30 biological processes where shared genes were significantly enriched, with “cell morphogenesis involved in differentiation”, “cell morphogenesis”, “axon development”, and “presynaptic active zone organization” being the top four processes (Table S6). Additionally, genes were enriched for seven GO cellular component processes, including “synapse”, “GABAergic synapse”, and “presynapse”. Finally, the genes were enriched for 21 cell type signatures⁵⁵, the top seven of which were in the midbrain and included “HGABA”, “HNBGABA”, “HDA1”, “HDA”, “HDA2”, “HNBML5”, and “HSERT”. These cell types are GABAergic, dopaminergic, serotonergic, and neuroblast-related. Analysis of the gene-set linked to concordant loci identified the biological process, “presynaptic active zone organization” and three cell type signatures, HGABA and HNBGABA in the midbrain as well as

“fetal limbic system neurons” (Table S7). The gene-set linked to discordant loci identified many more mechanisms including 11 biological processes and 14 cell-type signatures, though the latter did not include limbic system neurons (Table S8).

Drug repurposing analysis

Of the 131 unique genes associated with the 132 lead SNPs, six (*OPRM1*, *RET*, *DPYD*, *ADH1A*, *PDE4B*, *PRKCB*) were located in the gene or nearest to the transcription start site of genes associated with FDA-approved drugs (i.e., Tclin; Table S4), including naltrexone (*OPRM1*) among others. Eleven other genes were Tchem (i.e., known to bind to small molecules with high potency), followed by 101 Tbio and 13 Tdark⁴⁴. Two of the 11 Tchem targets are targeted by known drugs in OpenTargets. Specifically, *FTO* is targeted by bisantrene for acute myeloid leukemia (Phase II), and *GRM2* is targeted by four investigational drugs for central nervous system disorders including schizophrenia, major depressive disorder, perceptual disorders, bipolar disorder, psychosis, methamphetamine dependence, post-traumatic stress disorder, and seizure disorder.

BrainXcan

AUD was significantly associated with gray matter volume in four subcortical brain regions after applying p-value corrections for LD structure and multiple testing: the bilateral caudate nucleus (positive association), left amygdala (negative association), and right thalamus (positive association) (Table S9, Figures S6 and S7). After p-value adjustments, BMI had a total of 98 significant associations with brain IDPs. Approximately three-quarters of the BMI associations were with diffusion MRI IDPs ($n = 74$; 75.51%), with the remainder coming from structural MRIs. The top associations for BMI were with the medial lemniscus, a white matter tract that is part of the somatosensory pathway responsible for transmitting tactile,

proprioceptive, and other sensations from the body to higher brain centers⁵⁶. All significant associations for AUD had the same direction of effect for BMI (Figure 5), 76 of the BMI associations had the same direction of effect as AUD, and 22 had effects in the opposite direction for the two traits (Table S9, Figures S8 and S9). Gray matter volume in three brain regions—the bilateral caudate and the left amygdala—was significantly associated with both AUD and BMI.

Discussion

Analyses revealed several key findings regarding the genetic relationship between AUD and BMI. Both MiXeR and conjFDR analyses showed that more than half the variants shared by AUD and BMI exerted opposite directions of effect on the traits, supporting our hypothesis that this underlies their lack of genetic correlation. Leveraging conjFDR, we identified 132 shared genomic loci, including 53 that were novel from the original GWAS for AUD and BMI. Furthermore, analyses in a smaller independent sample demonstrated high replicability of the sign concordance of these results and moderate replicability of the significant associations, enhancing confidence in the findings. Expression analysis of genes linked to both phenotypes identified heightened expression in brain regions implicated in executive functioning, reward, homeostasis, and food intake regulation. BrainXcan analyses of brain IDPs from the UK Biobank reinforced these findings, identifying significant shared associations with caudate nucleus and amygdala. Overall, these findings detail the extensive polygenic overlap between AUD and BMI, elucidate several overlapping neurophysiological mechanisms, and suggest possible targets for intervention.

The low genetic correlation found in the present and prior studies^{22,23} is explained by the mixed directionality of genetic effects of the phenotypes. MiXeR analysis indicated high polygenic overlap (82%) between AUD and BMI, with 49% concordance in the variants' effect

directions. Similarly, using conjFDR, 42.4% ($n = 56$) of the 132 loci significantly associated with both AUD and BMI had the same direction of effect. Comparison analyses examining the overlap of AUD and BMI with other psychiatric phenotypes (ADHD, MDD, schizophrenia) yielded a range of genetic correlations and effect direction concordance, all showing substantial genetic overlap, consistent with prior work^{23,57,58}. AUD and BMI exhibited the highest proportion of estimated shared causal variants of all other phenotype pairings, despite having the lowest absolute genetic correlation of any pairing, which underscores the importance of accounting for variants' effect direction. The LAVA analysis corroborated these findings, revealing that 41 of the 2,495 independent regions exhibited significant genetic correlations between AUD and BMI, with nearly half (19 out of 41) showing positive correlations.

The *FTO* and *SLC39A8* gene loci exhibited the most significant discordant effects, and the *CADM2* gene locus exhibited the most significant concordant effects. Specifically, the effect allele of rs9939973, intronic within the *FTO* gene, was associated with a reduced likelihood of AUD and increased BMI. While BMI and alcohol-related GWAS have identified intronic *FTO* variants^{23,59,60}, this conjunctive analysis highlights this locus as the region that is most significantly associated with both phenotypes. Obesity research suggests that the *FTO* gene region alters the function of nearby genes (*IRX3* and *IRX5*), which impact the involvement of fat cells in thermogenesis^{61,62}. The psychiatric literature suggests that this region also affects neuronal activity, namely dopamine receptor type 2 and 3 function^{63,64}. The *SLC39A8* gene, which encodes the metal ion transporter protein ZIP8⁶⁵, was associated with both AUD and BMI, but with opposite directions of effect. This locus is highly pleiotropic and has been linked to an array of psychiatric and neurological diseases and Crohn's disease, possibly due its role in maintaining manganese homeostasis^{47,66,67}. Conversely, the most significant variant with

concordant effects on AUD and BMI was rs10511087, intronic within the *CADM2* gene.

CADM2 is expressed in some brain regions implicated in the present study, namely the frontal cortex (BA9) (Figure 3), and has been associated with cognition, pain, impulsivity, substance use, other risky behaviors, obesity, and other metabolic traits^{48,49,68-70}.

Drug repurposing analysis yielded targets of FDA-approved drugs and others that are in development or have not been examined. In particular, *PDE4B*, which is targeted by FDA-approved medications for chronic obstructive pulmonary disease and psoriasis/psoriatic arthritis, has shown evidence of reducing alcohol consumption^{71,72} and is under investigation as a treatment target for AUD (NCT05414240), weight loss, and other metabolic conditions⁷³⁻⁷⁵. Additionally, *OPRM1* is targeted by naltrexone, which is FDA-approved for treating AUD and opioid use disorder, and as a combination drug, naltrexone-bupropion, for the treatment of obesity^{19,76}. Importantly, both the *PDE4B* and *OPRM1* loci exhibited concordant effects on AUD and BMI. However, studies have not examined the effectiveness of these medications in treating both conditions simultaneously in a clinical setting and this study underscores the relevance of examining treatment options focused on genes linked to both phenotypes.

A final promising target identified in this study is, *GRM2*, which encodes for the metabotropic glutamate receptor 2 (mGluR2) and exhibited a discordant effect between AUD and BMI in the present study. Both metabotropic glutamate receptor (mGluR) 2/3 agonists and mGluR2 positive allosteric modulators have been found to reduce drinking after alcohol deprivation⁷⁷, alcohol self-administration^{78,79}, cue-induced reinstatement⁷⁸, and stress-induced reinstatement⁷⁹ (for a review of preclinical alcohol studies see⁸⁰). Administration of an mGluR2 agonist has also been shown to simultaneously reduce ethanol- and sucrose-seeking, and body weight⁸¹. It will be important for future studies to investigate the discordant effect identified in

the present study and further evaluate the promise of this mechanism for the treatment of AUD and obesity.

Several brain regions and neural cell types were identified across the various downstream analyses. Genes linked to the lead SNPs were significantly up-regulated in the prefrontal and anterior cingulate cortex, hypothalamus, hippocampus, and amygdala. Additionally, amygdala and caudate nucleus gray matter volumes were significantly associated with AUD and BMI risk in BrainXcan analyses. Furthermore, GO gene-set analysis yielded enrichment for signatures in the midbrain, including GABAergic, dopaminergic, and serotonergic cell types. Shared genes linked to concordant loci identified up-regulation in the amygdala and hypothalamus and implicated limbic system neurons, whereas discordant loci genes implicated the prefrontal and anterior cingulate cortex. The brain regions and cell types identified here have consistently been implicated in obesity^{82,83}, binge eating disorder^{84,85}, and AUD^{86,87}. The prefrontal cortex and amygdala are dysregulated after drug use, resulting in withdrawal, craving, impulsivity, and negative affect, which drive continued use^{87,88}. Similarly, the frontal cortex, amygdala, caudate, and hypothalamus exhibit hyperreactivity to food-associated cue exposure in obese and overweight individuals⁸³. Evidence also suggests that the caudate nucleus plays a key role in mediating external stimuli and internal preferences to guide behavior⁸⁹. The hypothalamus is integral to stress responses and homeostatic regulation of caloric intake to meet real and perceived nutrition needs^{90,91}. Dysfunction in these areas is progressive with eating and drug use, resulting in altered reward processing and a shift in ‘liking’ vs. ‘wanting’ the hyper-fixated substance⁹²⁻⁹⁴. Overall, these findings underscore the utility of leveraging human genomic and transcriptomic data analysis and align with insights from preclinical and human neuroimaging studies on the neurophysiological mechanisms driving AUD and obesity. Future studies

leveraging high resolution single-cell RNA sequencing datasets⁹⁵ are needed to parse the brain regions implicated and understand the mechanisms underlying concordant and discordant shared loci.

There are notable limitations to this study. BMI may not optimally measure obesity, both because it is used as a continuous variable in this study, and because there is no distinction between weight from fat, bone, or muscle mass. However, BMI is easily and inexpensively measured, and is a longstanding, well-studied surrogate measure of obesity⁹⁶. Nonetheless, future studies should expand these analyses to examine complementary phenotypes, such as body composition, waist-to-hip ratio⁹⁷, and binge-eating disorder⁹⁸, and to clinical subpopulations (e.g., through GWAS of BMI in individuals with and without AUD)⁹⁹.

A second limitation is that the data used in this study are limited to individuals of European ancestry to ensure compatible genetic architectures. As sample sizes increase, a high priority must be placed on including individuals of non-European ancestry. The potential consequences of excluding diverse ancestral groups include the inequitable distribution of the benefits of genetic research and exacerbation of existing health disparities¹⁰⁰⁻¹⁰². Thus, future studies should replicate these findings using more diverse ancestral samples as biobanks continue to grow. This shift towards more diverse samples will improve result generalizability and understanding of cross-population genetic variation.

Finally, while the use of data aggregated from large biobank studies enables highly powered genomic analyses, there is limited ability to account for environmental exposures and longitudinal progression. Family studies such as the Collaborative Study on the Genetics of Alcoholism (COGA)¹⁰³ can provide complementary data to larger-scale biobank studies. Indeed, follow-up studies leveraging data from studies like COGA will enable a better understanding of

AUD and BMI progression, remission and recovery, antecedents and sequelae, and the interplay between genetic and socio-environmental factors.

In summary, our study found that the absence of genetic correlation between AUD and BMI is attributable to the presence of shared variants with opposite directions of effect (i.e., a variant protective for obesity increases risk for AUD and vice versa). Follow-up analyses specified overlapping genomic loci and identified brain regions implicated in executive functioning, reward, homeostasis, and food intake regulation. Together, these findings increase our understanding of the shared polygenic architecture of AUD and BMI and lend further support to the notion that eating behavior and AUD share overlapping neurobiological mechanisms.

Data availability

Full summary statistics from two genome-wide association studies can be accessed at the following locations: GIANT Consortium website (https://portals.broadinstitute.org/collaboration/giant/index.php/GIANT_consortium_data_files) and through the Gelernter Lab website without restriction (<https://medicine.yale.edu/lab/gelernter/stats/>) or dbGaP (accession number phs001672, under the ‘Addiction’ Analysis; registration and approval are needed following dbGaP’s data accessing process). Researchers seeking access to the exact AUD summary statistics cohort used in this study should contact the original study authors for more information (Zhou et al., 2023).

Replication summary statistics can be accessed at the FinnGen website (https://www.finngen.fi/en/access_results).

Code availability

MiXeR (<https://github.com/precimed/mixer>) was used to investigate the overall shared genetic architecture between AUD and BMI. LD Score regression (LDSC) v1.0.1 (<https://github.com/bulik/ldsc>) was used to calculate heritability, genetic correlations, and standard errors. conjFDR (<https://github.com/precimed/pleiofdr>) analysis was used to detect loci significantly associated with both phenotypes. Local Analysis of [co]Variant Association (LAVA) was used to estimate local heritability and local genetic correlations (<https://github.com/josefin-werme/LAVA>). Functional Mapping and Annotation (FUMA) was used to identify lead single nucleotide polymorphisms and to implement gene expression, tissue enrichment specificity, and gene-set enrichment analyses. FUMA can be accessed here: <https://fuma.ctglab.nl>. Annotations for the lead SNPs corresponding to Variant Effect Predictor (VEP), Combined Annotation Dependent Deletion (CADD) scores, and nearest transcription start site were sourced from OpenTargets (<https://genetics.opentargets.org/> v22.10). The presence of lead SNPs within genes was confirmed using dbGaP (<https://www.ncbi.nlm.nih.gov/gap/>). The Target Central Resource Database (TCRD) and OpenTargets were accessed to integrate drug-protein interaction/druggability information (<https://pharos.nih.gov/> v3.18.0; <https://platform.opentargets.org/> v23.12). BrainXcan was used to evaluate the shared associations of AUD and BMI with brain image-derived phenotypes. BrainXcan documentation can be found here: <https://liangyy.github.io/brainxcan-docs/docs/overview.html>.

References

1. Apovian, C.M. Obesity: definition, comorbidities, causes, and burden. *Am J Manag Care* **22**, s176-185 (2016).
2. Sacks, J.J., Gonzales, K.R., Bouchery, E.E., Tomedi, L.E. & Brewer, R.D. 2010 National and State Costs of Excessive Alcohol Consumption. *Am J Prev Med* **49**, e73-e79 (2015).
3. Kranzler, H.R. Overview of Alcohol Use Disorder. *American Journal of Psychiatry* **180**, 565-572 (2023).
4. Hruby, A., *et al.* Determinants and Consequences of Obesity. *American Journal of Public Health* **106**, 1656-1662 (2016).
5. Raza, S.A., Sokale, I.O. & Thrift, A.P. Burden of high-risk phenotype of heavy alcohol consumption among obese U.S. population: results from National Health and Nutrition Examination Survey, 1999-2020. *Lancet Reg Health Am* **23**, 100525 (2023).
6. Magkos, F., *et al.* On the pathogenesis of obesity: causal models and missing pieces of the puzzle. *Nat Metab* (2024).
7. Yohn, S.E., Galbraith, J., Calipari, E.S. & Conn, P.J. Shared Behavioral and Neurocircuitry Disruptions in Drug Addiction, Obesity, and Binge Eating Disorder: Focus on Group I mGluRs in the Mesolimbic Dopamine Pathway. *ACS Chemical Neuroscience* **10**, 2125-2143 (2019).
8. Volkow, N.D., *et al.* Low dopamine striatal D2 receptors are associated with prefrontal metabolism in obese subjects: Possible contributing factors. *NeuroImage* **42**, 1537-1543 (2008).
9. Volkow, N.D., Wise, R.A. & Baler, R. The dopamine motive system: implications for drug and food addiction. *Nature Reviews Neuroscience* **18**, 741-752 (2017).
10. Moore, C.F., Sabino, V., Koob, G.F. & Cottone, P. Pathological Overeating: Emerging Evidence for a Compulsivity Construct. *Neuropsychopharmacology* **42**, 1375-1389 (2017).
11. Lindgren, E., *et al.* Food addiction: A common neurobiological mechanism with drug abuse. *FBL* **23**, 811-836 (2018).
12. Gearhardt, A.N. & Hebebrand, J. The concept of “food addiction” helps inform the understanding of overeating and obesity: Debate Consensus. *The American Journal of Clinical Nutrition* **113**, 274-276 (2021).
13. Deschaine, S.L. & Leggio, L. From “Hunger Hormone” to “It’s Complicated”: Ghrelin Beyond Feeding Control. *Physiology* **37**, 5-15 (2022).
14. Farokhnia, M., Faulkner, M.L., Piacentino, D., Lee, M.R. & Leggio, L. Ghrelin: From a gut hormone to a potential therapeutic target for alcohol use disorder. *Physiology & Behavior* **204**, 49-57 (2019).
15. Klausen, M.K., Thomsen, M., Wortwein, G. & Fink-Jensen, A. The role of glucagon-like peptide 1 (GLP-1) in addictive disorders. *British Journal of Pharmacology* **179**, 625-641 (2022).
16. Leggio, L., *et al.* GLP-1 receptor agonists are promising but unproven treatments for alcohol and substance use disorders. *Nature Medicine* **29**, 2993-2995 (2023).
17. Elmaleh-Sachs, A., *et al.* Obesity Management in Adults: A Review. *JAMA* **330**, 2000-2015 (2023).

18. Perry, C.M.P., *et al.* The Management of Substance Use Disorders: Synopsis of the 2021 U.S. Department of Veterans Affairs and U.S. Department of Defense Clinical Practice Guideline. *Annals of Internal Medicine* **175**, 720-731 (2022).
19. Reus, V.I., *et al.* The American Psychiatric Association Practice Guideline for the Pharmacological Treatment of Patients With Alcohol Use Disorder. *American Journal of Psychiatry* **175**, 86-90 (2018).
20. Verhulst, B., Neale, M.C. & Kendler, K.S. The heritability of alcohol use disorders: a meta-analysis of twin and adoption studies. *Psychological Medicine* **45**, 1061-1072 (2015).
21. Loos, R.J.F. & Yeo, G.S.H. The genetics of obesity: from discovery to biology. *Nat Rev Genet* **23**, 120-133 (2022).
22. Saunders, G.R.B., *et al.* Genetic diversity fuels gene discovery for tobacco and alcohol use. *Nature* **612**, 720-724 (2022).
23. Zhou, H., *et al.* Multi-ancestry study of the genetics of problematic alcohol use in over 1 million individuals. *Nature Medicine* **29**, 3184-3192 (2023).
24. Frei, O., *et al.* Bivariate causal mixture model quantifies polygenic overlap between complex traits beyond genetic correlation. *Nature Communications* **10**, 2417 (2019).
25. Hindley, G., *et al.* Charting the Landscape of Genetic Overlap Between Mental Disorders and Related Traits Beyond Genetic Correlation. *American Journal of Psychiatry* **179**, 833-843 (2022).
26. Tesfaye, M., *et al.* Shared genetic architecture between irritable bowel syndrome and psychiatric disorders reveals molecular pathways of the gut-brain axis. *Genome Medicine* **15**, 60 (2023).
27. Demontis, D., *et al.* Genome-wide analyses of ADHD identify 27 risk loci, refine the genetic architecture and implicate several cognitive domains. *Nature Genetics* **55**, 198-208 (2023).
28. Hope, S., *et al.* Bidirectional genetic overlap between autism spectrum disorder and cognitive traits. *Translational Psychiatry* **13**, 295 (2023).
29. Werme, J., van der Sluis, S., Posthuma, D. & de Leeuw, C.A. An integrated framework for local genetic correlation analysis. in *Nat Genet*, Vol. 54 274-282 (© 2022. The Author(s), under exclusive licence to Springer Nature America, Inc., United States, 2022).
30. Smeland, O.B., *et al.* Discovery of shared genomic loci using the conditional false discovery rate approach. *Human Genetics* **139**, 85-94 (2020).
31. Yengo, L., *et al.* Meta-analysis of genome-wide association studies for height and body mass index in ~700000 individuals of European ancestry. *Human Molecular Genetics* **27**, 3641-3649 (2018).
32. Zhou, H., *et al.* Genome-wide meta-analysis of problematic alcohol use in 435,563 individuals yields insights into biology and relationships with other traits. *Nature Neuroscience* **23**, 809-818 (2020).
33. Holland, D., *et al.* Beyond SNP heritability: Polygenicity and discoverability of phenotypes estimated with a univariate Gaussian mixture model. *PLoS Genet* **16**, e1008612 (2020).
34. Howard, D.M., *et al.* Genome-wide meta-analysis of depression identifies 102 independent variants and highlights the importance of the prefrontal brain regions. *Nature Neuroscience* **22**, 343-352 (2019).

35. Trubetskov, V., *et al.* Mapping genomic loci implicates genes and synaptic biology in schizophrenia. *Nature* **604**, 502-508 (2022).
36. Cuellar-Partida, G., Tung, J. Y., Eriksson, N., Albrecht, E., Aliev, F., Andreassen, O. A., ... & Medland, S. E. . Genome-wide association study identifies 48 common genetic variants associated with handedness. *Nature Human Behaviour* **5**, 59-70 (2021).
37. Bulik-Sullivan, B.K., *et al.* LD Score regression distinguishes confounding from polygenicity in genome-wide association studies. *Nature Genetics* **47**, 291-295 (2015).
38. Andreassen, Ole A., *et al.* Improved Detection of Common Variants Associated with Schizophrenia by Leveraging Pleiotropy with Cardiovascular-Disease Risk Factors. *The American Journal of Human Genetics* **92**, 197-209 (2013).
39. Kurki, M.I., *et al.* FinnGen provides genetic insights from a well-phenotyped isolated population. *Nature* **613**, 508-518 (2023).
40. Cheng, W., van der Meer, D., Parker, N., Hindley, G., O'Connell, K.S., Wang, Y., Shadrin, A.A., Alnæs, D., Bahrani, S., Lin, A. and Karadag, N. Shared genetic architecture between schizophrenia and subcortical brain volumes implicates early neurodevelopmental processes and brain development in childhood. *Molecular Psychiatry* **27**, 5167-5176 (2022).
41. Watanabe, K., Taskesen, E., van Bochoven, A. & Posthuma, D. Functional mapping and annotation of genetic associations with FUMA. *Nature Communications* **8**, 1826 (2017).
42. Auton, A., *et al.* A global reference for human genetic variation. *Nature* **526**, 68-74 (2015).
43. Ochoa, D., *et al.* The next-generation Open Targets Platform: reimaged, redesigned, rebuilt. *Nucleic Acids Research* **51**, D1353-D1359 (2023).
44. Kelleher, K.J., *et al.* Pharos 2023: an integrated resource for the understudied human proteome. *Nucleic Acids Research* **51**, D1405-D1416 (2023).
45. Liang, Y., *et al.* BrainXcan identifies brain features associated with behavioral and psychiatric traits using large scale genetic and imaging data. *medRxiv*, 2021.2006.2001.21258159 (2021).
46. Chang, R., *et al.* Emerging Roles of FTO in Neuropsychiatric Disorders. *BioMed Research International* **2022**, 2677312 (2022).
47. Pickrell, J.K., *et al.* Detection and interpretation of shared genetic influences on 42 human traits. *Nature Genetics* **48**, 709-717 (2016).
48. Pasma, J.A., *et al.* The CADM2 Gene and Behavior: A Phenome-Wide Scan in UK-Biobank. *Behavior Genetics* **52**, 306-314 (2022).
49. Sanchez-Roige, S., *et al.* CADM2 is implicated in impulsive personality and numerous other traits by genome- and phenome-wide association studies in humans and mice. *Translational Psychiatry* **13**, 167 (2023).
50. Bahrani, S., *et al.* Dissecting the shared genetic basis of migraine and mental disorders using novel statistical tools. *Brain* **145**, 142-153 (2022).
51. Røddevand, L., *et al.* Characterizing the Shared Genetic Underpinnings of Schizophrenia and Cardiovascular Disease Risk Factors. *Am J Psychiatry* **180**, 815-826 (2023).
52. Wiström, E.D., *et al.* Genome-wide analysis reveals genetic overlap between alcohol use behaviours, schizophrenia and bipolar disorder and identifies novel shared risk loci. *Addiction* **117**, 600-610 (2022).
53. Kircher, M., *et al.* A general framework for estimating the relative pathogenicity of human genetic variants. *Nature Genetics* **46**, 310-315 (2014).

54. Aguet, F., Barbeira, A. N., Bonazzola, R., Brown, A., Castel, S. E., Jo, B., Kasela, S., Kim-Hellmuth, S., Liang, Y., Oliva, M., Flynn, E. D., Parsana, P., Fresard, L., Gamazon, E. R., Hamel, A. R., He, Y., Hormozdiari, F., Mohammadi, P., Muñoz-Aguirre, M., ... Volpi, S. The GTEx Consortium atlas of genetic regulatory effects across human tissues. *Science* **369**, 1318-1330 (2020).
55. La Manno, G., *et al.* Molecular Diversity of Midbrain Development in Mouse, Human, and Stem Cells. *Cell* **167**, 566-580.e519 (2016).
56. Warren, S., Capra, N.F. & Yeziarski, R.P. Chapter 17 - The Somatosensory System I: Tactile Discrimination and Position Sense. in *Fundamental Neuroscience for Basic and Clinical Applications (Fifth Edition)* (eds. Haines, D.E. & Mihailoff, G.A.) 243-257.e241 (Elsevier, 2018).
57. Bahrami, S., *et al.* Shared Genetic Loci Between Body Mass Index and Major Psychiatric Disorders: A Genome-wide Association Study. *JAMA Psychiatry* **77**, 503-512 (2020).
58. Torgersen, K.A.-O., *et al.* Shared genetic loci between depression and cardiometabolic traits. (2022).
59. Kranzler, H.R., *et al.* Genome-wide association study of alcohol consumption and use disorder in 274,424 individuals from multiple populations. *Nature Communications* **10**, 1499 (2019).
60. Loos, R.J.F. & Yeo, G.S.H. The bigger picture of FTO—the first GWAS-identified obesity gene. *Nature Reviews Endocrinology* **10**, 51-61 (2014).
61. Laber, S., *et al.* Linking the FTO obesity rs1421085 variant circuitry to cellular, metabolic, and organismal phenotypes in vivo. *Science Advances* **7**, eabg0108 (2021).
62. Zhang, Z., *et al.* The rs1421085 variant within FTO promotes brown fat thermogenesis. *Nature Metabolism* **5**, 1337-1351 (2023).
63. Hess, M.E., *et al.* The fat mass and obesity associated gene (Fto) regulates activity of the dopaminergic midbrain circuitry. *Nature Neuroscience* **16**, 1042-1048 (2013).
64. Zhang, X., *et al.* Structural insights into FTO's catalytic mechanism for the demethylation of multiple RNA substrates. *Proceedings of the National Academy of Sciences* **116**, 2919-2924 (2019).
65. Nebert, D.W. & Liu, Z. SLC39A8 gene encoding a metal ion transporter: discovery and bench to bedside. *Human Genomics* **13**, 51 (2019).
66. Sazonovs, A., *et al.* Large-scale sequencing identifies multiple genes and rare variants associated with Crohn's disease susceptibility. *Nature Genetics* **54**, 1275-1283 (2022).
67. Sunuwar, L., *et al.* Pleiotropic ZIP8 A391T implicates abnormal manganese homeostasis in complex human disease. *JCI Insight* **5**(2020).
68. Arends, R.M., *et al.* Associations between the CADM2 gene, substance use, risky sexual behavior, and self-control: A phenome-wide association study. *Addiction Biology* **26**, e13015 (2021).
69. Koller, D., *et al.* Pleiotropy and genetically inferred causality linking multisite chronic pain to substance use disorders. *Molecular Psychiatry* (2024).
70. Morris, J., *et al.* Genetic variation in CADM2 as a link between psychological traits and obesity. (2019).
71. Grodin, E.N., *et al.* Ibudilast, a neuroimmune modulator, reduces heavy drinking and alcohol cue-elicited neural activation: a randomized trial. *Translational Psychiatry* **11**, 355 (2021).

72. Grigsby, K.B., *et al.* Preclinical and clinical evidence for suppression of alcohol intake by apremilast. LID - 10.1172/JCI159103 [doi] LID - e159103. (2023).
73. Crocetti, L., Floresta, G., Cilibrizzi, A. & Giovannoni, M.P. An Overview of PDE4 Inhibitors in Clinical Trials: 2010 to Early 2022. *Molecules* **27**, 4964 (2022).
74. Ferguson, L.D., *et al.* Effect of the phosphodiesterase 4 inhibitor apremilast on cardiometabolic outcomes in psoriatic disease—results of the Immune Metabolic Associations in Psoriatic Arthritis study. *Rheumatology* **61**, 1026-1034 (2021).
75. Wu, C. & Rajagopalan, S. Phosphodiesterase-4 inhibition as a therapeutic strategy for metabolic disorders. *Obesity Reviews* **17**, 429-441 (2016).
76. Grunvald, E., *et al.* AGA Clinical Practice Guideline on Pharmacological Interventions for Adults With Obesity. (2022).
77. Vengeliene, V. & Spanagel, R. mGlu2 mechanism-based interventions to treat alcohol relapse. *Front Pharmacol* **13**, 985954 (2022).
78. Augier, E., *et al.* The mGluR2 Positive Allosteric Modulator, AZD8529, and Cue-Induced Relapse to Alcohol Seeking in Rats. *Neuropsychopharmacology* **41**, 2932-2940 (2016).
79. Sidhpura, N., Weiss, F. & Martin-Fardon, R. Effects of the mGlu2/3 agonist LY379268 and the mGlu5 antagonist MTEP on ethanol seeking and reinforcement are differentially altered in rats with a history of ethanol dependence. *Biol Psychiatry* **67**, 804-811 (2010).
80. Johnson, K.A. & Lovinger, D.M. Allosteric modulation of metabotropic glutamate receptors in alcohol use disorder: Insights from preclinical investigations. *Adv Pharmacol* **88**, 193-232 (2020).
81. Windisch, K.A. & Czachowski, C.L. Effects of group II metabotropic glutamate receptor modulation on ethanol- and sucrose-seeking and consumption in the rat. *Alcohol* **66**, 77-85 (2018).
82. Gómez-Apo, E., Mondragón-Maya, A., Ferrari-Díaz, M. & Silva-Pereyra, J. Structural Brain Changes Associated with Overweight and Obesity. *Journal of Obesity* **2021**, 6613385 (2021).
83. Meng, X., Huang, D., Ao, H., Wang, X. & Gao, X. Food cue recruits increased reward processing and decreased inhibitory control processing in the obese/overweight: An activation likelihood estimation meta-analysis of fMRI studies. *Obes Res Clin Pract* **14**, 127-135 (2020).
84. Donnelly, B., *et al.* Neuroimaging in bulimia nervosa and binge eating disorder: a systematic review. *Journal of Eating Disorders* **6**, 3 (2018).
85. Giel, K.E., *et al.* Binge eating disorder. *Nature Reviews Disease Primers* **8**, 16 (2022).
86. Fritz, M., Klawonn, A.M. & Zahr, N.M. Neuroimaging in alcohol use disorder: From mouse to man. *Journal of Neuroscience Research* **100**, 1140-1158 (2022).
87. Koob, G.F. & Volkow, N.D. Neurobiology of addiction: a neurocircuitry analysis. *Lancet Psychiatry* **3**, 760-773 (2016).
88. Koob, G.F. & Volkow, N.D. Neurocircuitry of Addiction. *Neuropsychopharmacology* **35**, 217-238 (2010).
89. Doi, T., Fan, Y., Gold, J.I. & Ding, L. The caudate nucleus contributes causally to decisions that balance reward and uncertain visual information. *eLife* **9**, e56694 (2020).
90. Gupta, A., Osadchiy, V. & Mayer, E.A. Brain–gut–microbiome interactions in obesity and food addiction. *Nature Reviews Gastroenterology & Hepatology* **17**, 655-672 (2020).

91. Stover, P.J., *et al.* Neurobiology of eating behavior, nutrition, and health. *Journal of Internal Medicine* **294**, 582-604 (2023).
92. Bodell, L.P. & Racine, S.E. A mechanistic staging model of reward processing alterations in individuals with binge-type eating disorders. *International Journal of Eating Disorders* **56**, 516-522 (2023).
93. Morales, I. Brain regulation of hunger and motivation: The case for integrating homeostatic and hedonic concepts and its implications for obesity and addiction. *Appetite* **177**, 106146 (2022).
94. Morales, I. & Berridge, K.C. ‘Liking’ and ‘wanting’ in eating and food reward: Brain mechanisms and clinical implications. *Physiology & Behavior* **227**, 113152 (2020).
95. Siletti, K., *et al.* Transcriptomic diversity of cell types across the adult human brain. *Science* **382**, eadd7046 (2023).
96. Fryar, C.D., Carroll, M.D. & Afful, J. Prevalence of Overweight, Obesity, and Extreme Obesity Among Adults: United States, Trends 1960–1962 Through 2009–2010. in *Health E-Stats* (National Center for Health Statistics (NCHS), 2015).
97. Pulit, S.L., *et al.* Meta-analysis of genome-wide association studies for body fat distribution in 694 649 individuals of European ancestry. *Human Molecular Genetics* **28**, 166-174 (2018).
98. Munn-Chernoff, M.A., *et al.* Shared genetic risk between eating disorder- and substance-use-related phenotypes: Evidence from genome-wide association studies. *Addiction Biology* **26**, e12880 (2021).
99. Polimanti, R., *et al.* Genome-wide association study of body mass index in subjects with alcohol dependence. *Addiction Biology* **22**, 535-549 (2017).
100. Lofton, H., Ard, J.D., Hunt, R.R. & Knight, M.G. Obesity among African American people in the United States: A review. *Obesity* **31**, 306-315 (2023).
101. Ogden, C.L., *et al.* Trends in Obesity Prevalence by Race and Hispanic Origin—1999-2000 to 2017-2018. *JAMA* **324**, 1208-1210 (2020).
102. Zapolski, T.C.B., Pedersen, S.L., McCarthy, D.M. & Smith, G.T. Less drinking, yet more problems: Understanding African American drinking and related problems. *Psychological Bulletin* **140**, 188-223 (2014).
103. Agrawal, A., *et al.* The Collaborative Study on the Genetics of Alcoholism: Overview. *Genes Brain Behav* **22**, e12864 (2023).

Figure 1. MiXeR Venn diagrams showing the estimated number of shared causal variants in the thousands and genetic correlations (r_g) of AUD and BMI with each other and psychiatric disorders. Left-handedness was included as a control. h^2_{SNP} = SNP-based heritability. Standard errors for genetic correlations and heritability estimates are included in parentheses. ADHD = attention-deficit/hyperactivity disorder, AUD = alcohol use disorder, BMI = body mass index, MDD = major depressive disorder, SCZ = schizophrenia.

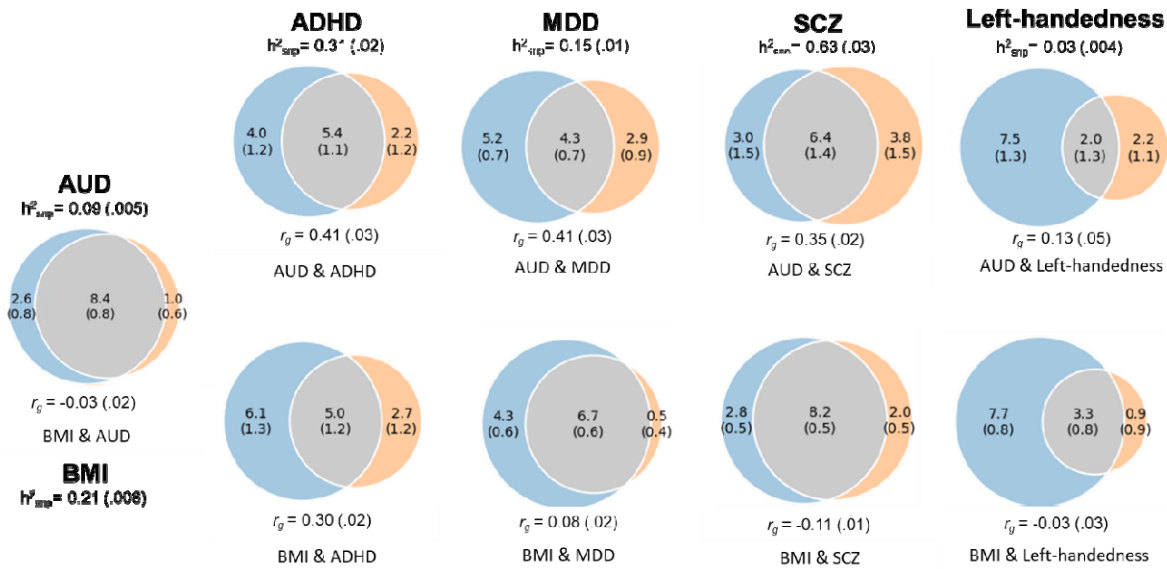


Figure 2. Manhattan plot of variants jointly associated with AUD and BMI. The plot depicts \log_{10} transformed conjFDR values for each SNP on the y-axis and chromosomal position on the x-axis. The horizontal line is the threshold for significant shared associations between AUD and BMI (conjFDR < 0.05). Independent lead SNPs are green. The results are also shown in Table S4.

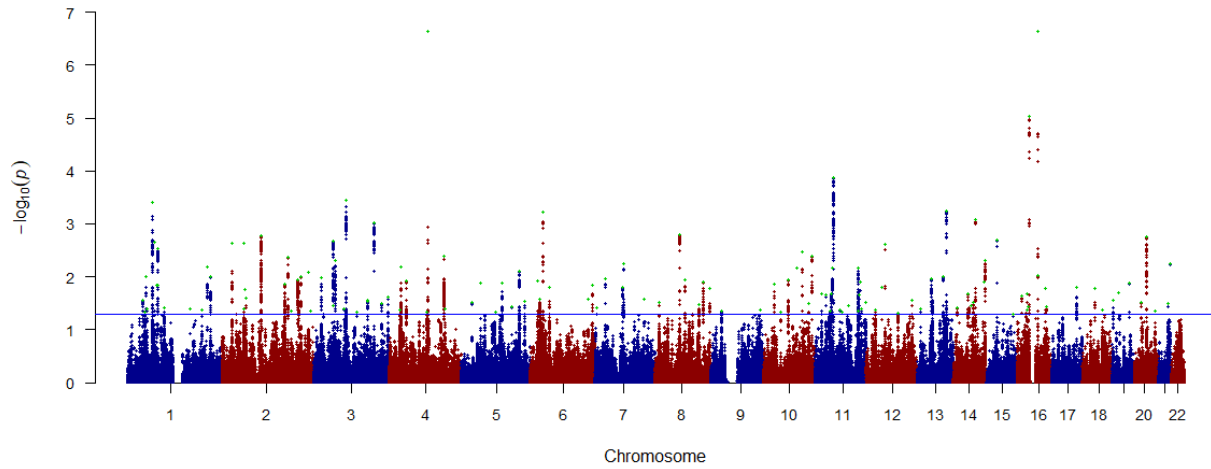


Figure 3. Significant up-regulated differential gene expression (DEG) in the frontal cortex (BA9), hypothalamus, cortex, anterior cingulate cortex (BA24), hippocampus, and amygdala.

Tissues are significantly enriched at Bonferroni corrected p-value ≤ 0.05 for 54 GTEx tissue types. Only genes with a Bonferroni corrected p-value and absolute log fold change ≥ 0.58 for a given tissue are included. For full results across all brain tissues, regardless of significance, see Figure S3.

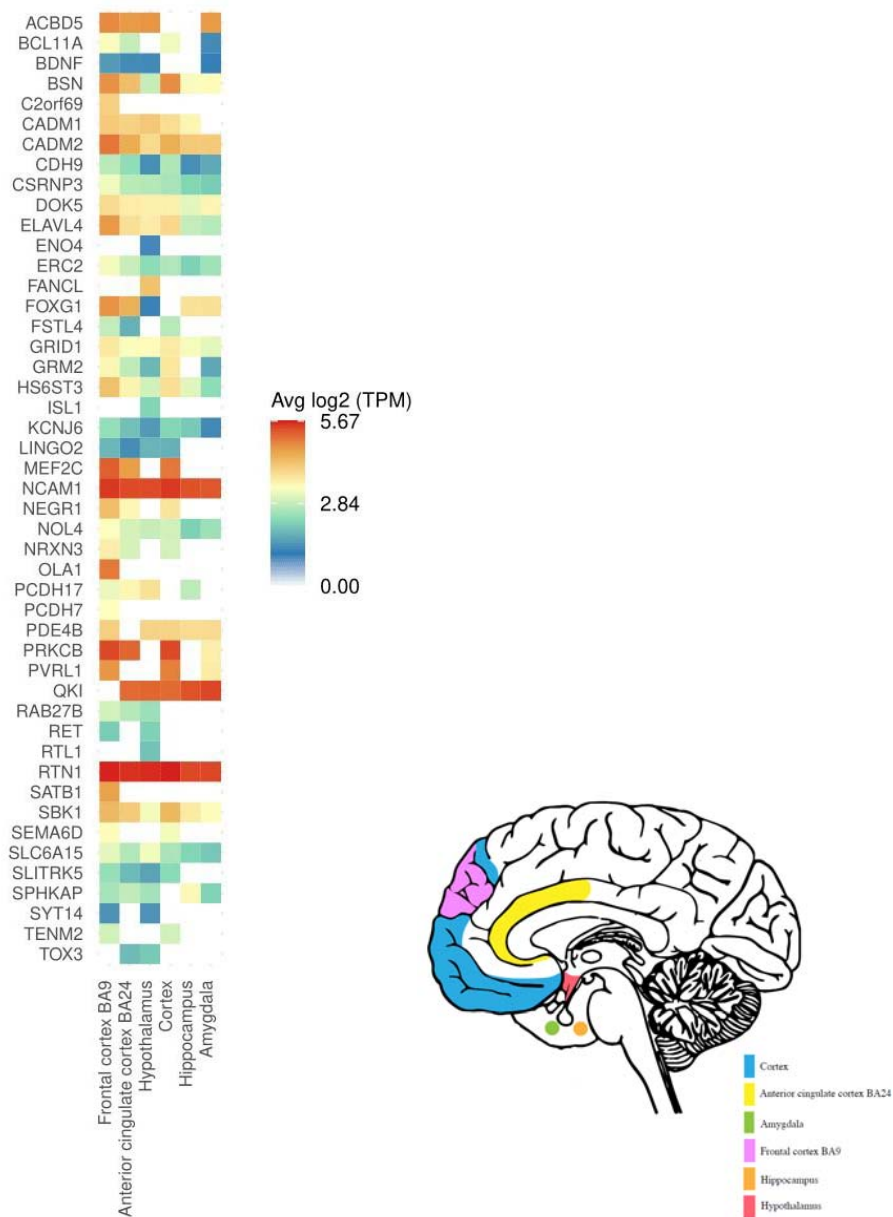


Figure 4. Differential gene expression (DEG) in 54 GTEx tissue types for genes linked to lead SNPs in distinct loci significantly associated with AUD and BMI. Significant enrichment ($p < .05$ after Bonferroni correction) is highlighted in red.

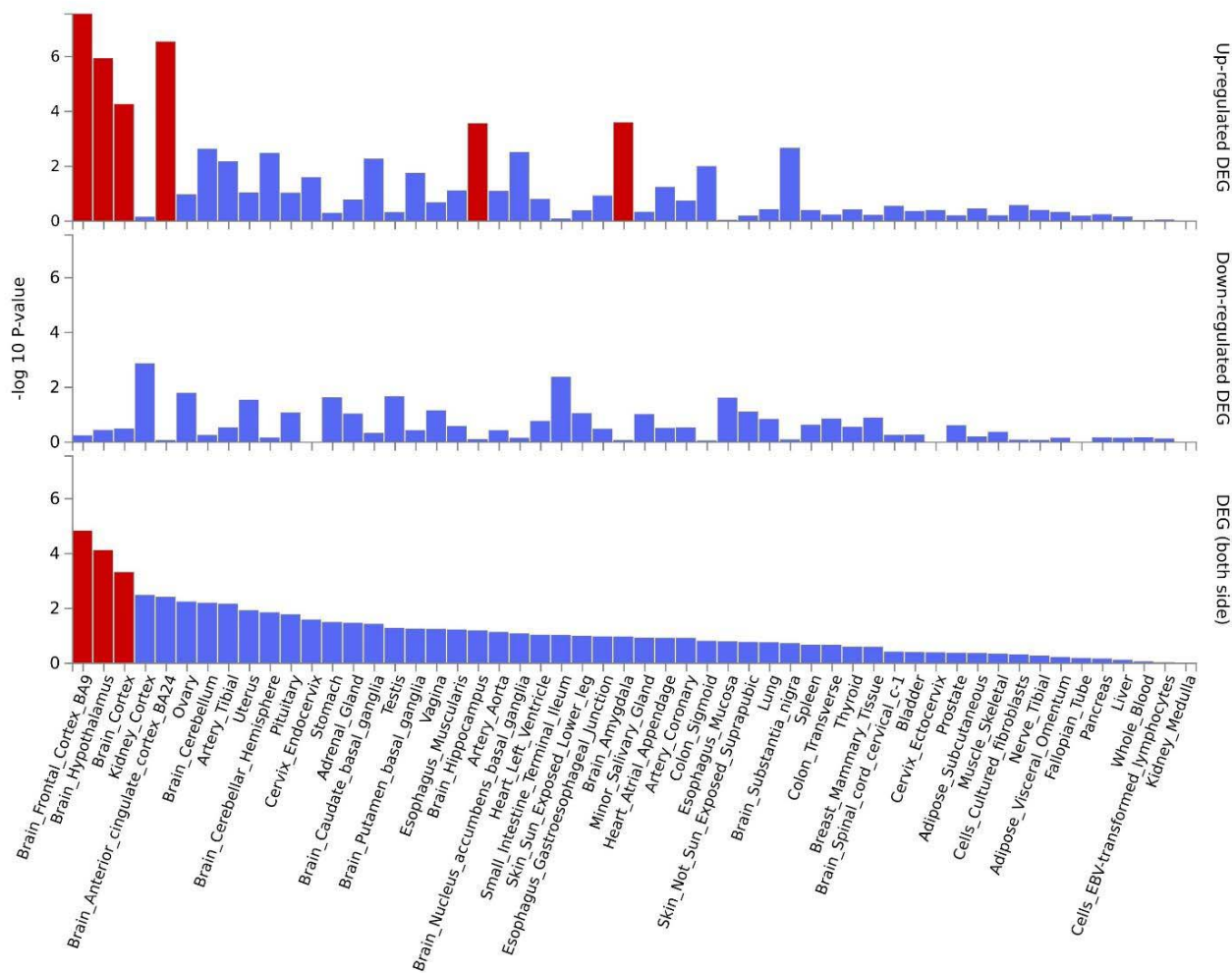


Figure 5. Brain visualization of subcortical features significantly associated with AUD and BMI. Z-scores of the associations of the brain regions significant after false discovery rate correction (bilateral caudate, right thalamus, left amygdala) are shown, with orange indicating positive associations and blue indicating negative associations. AUD = alcohol use disorder, BMI = body mass index.

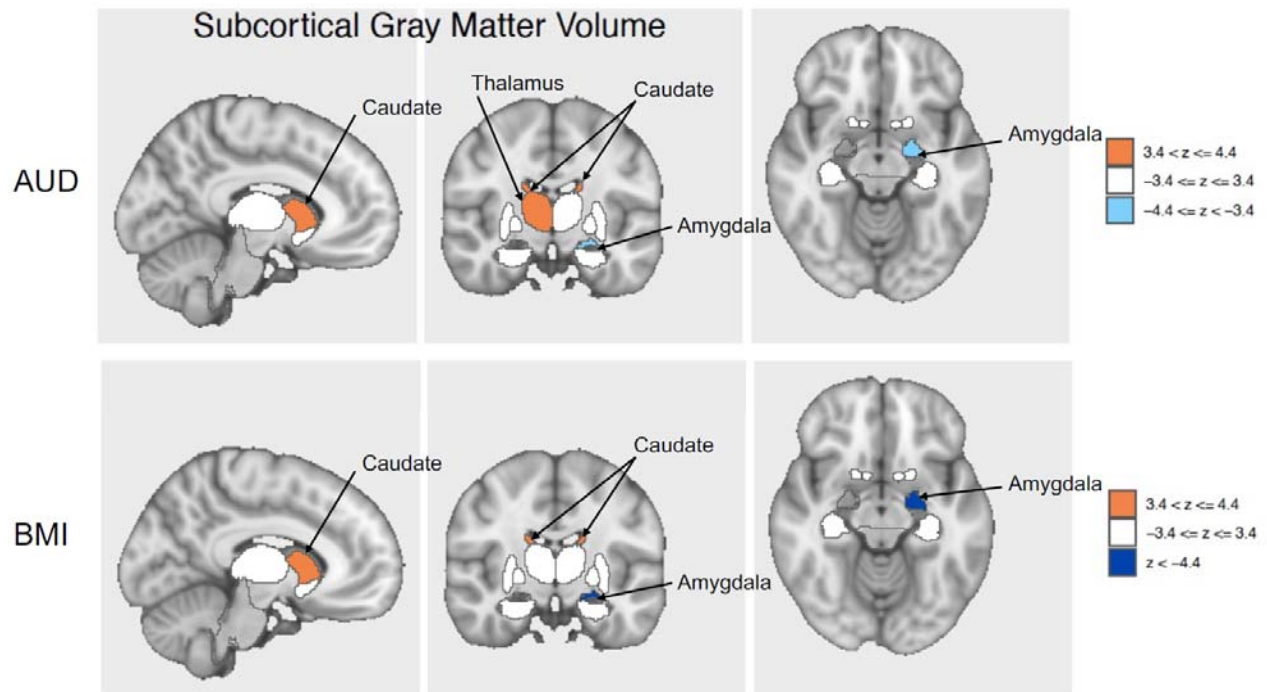
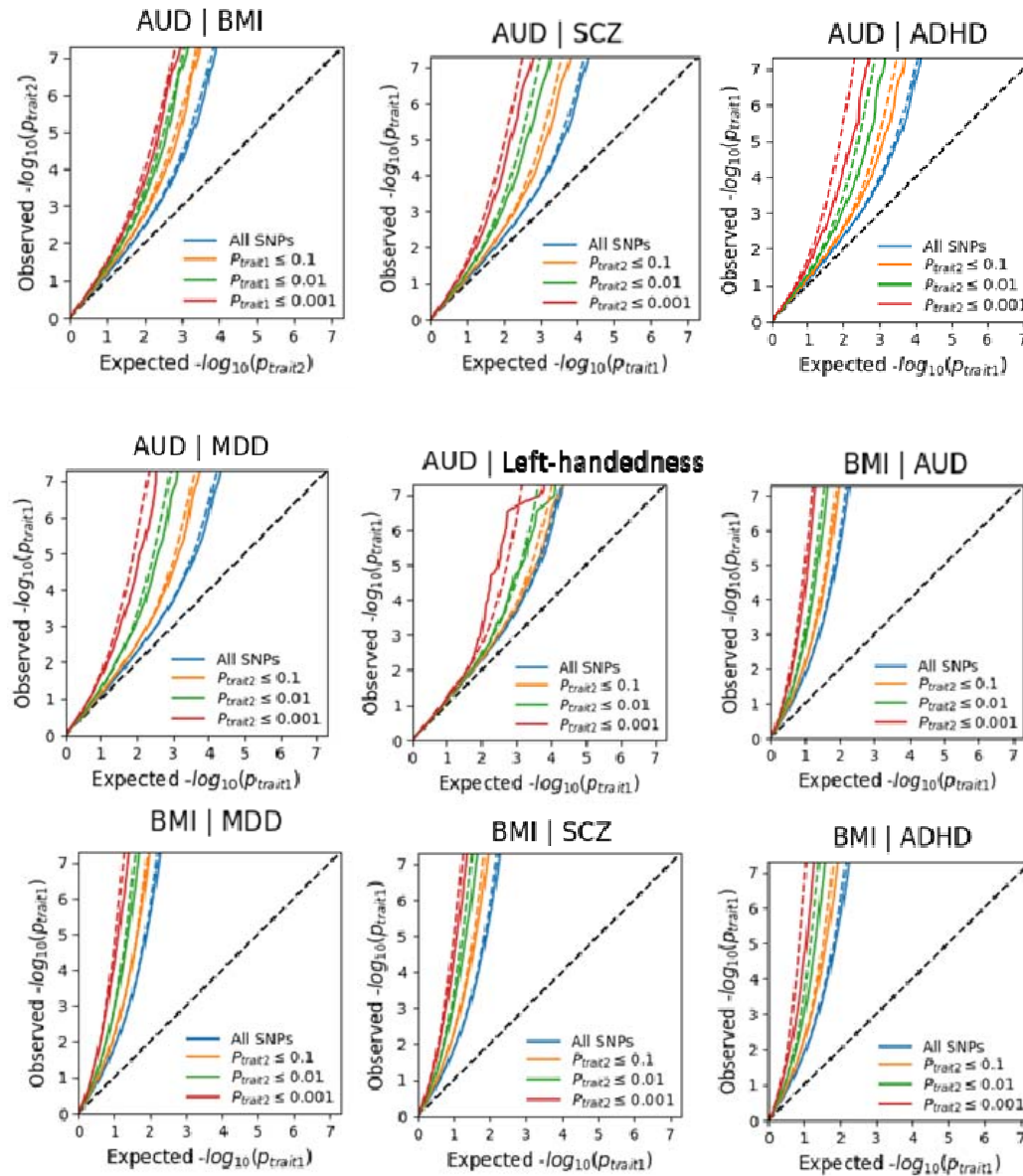


Figure S1. Conditional Q-Q plots showing the distribution of observed versus expected $-\log_{10} p$ -values for the primary phenotypes (AUD and BMI) for SNPs conditional on associations of a secondary trait at three p-value strata ($p \leq 0.1, 0.01, \text{ and } 0.001$). ADHD = attention deficit hyperactivity disorder, AUD = alcohol use disorder, BMI = body mass index, MDD = major depressive disorder, SCZ = schizophrenia.



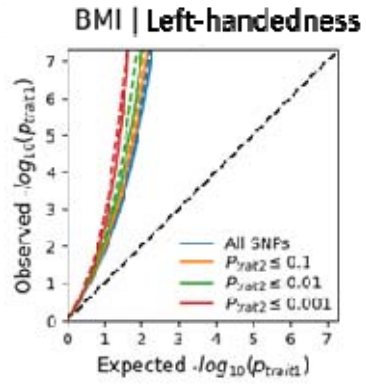
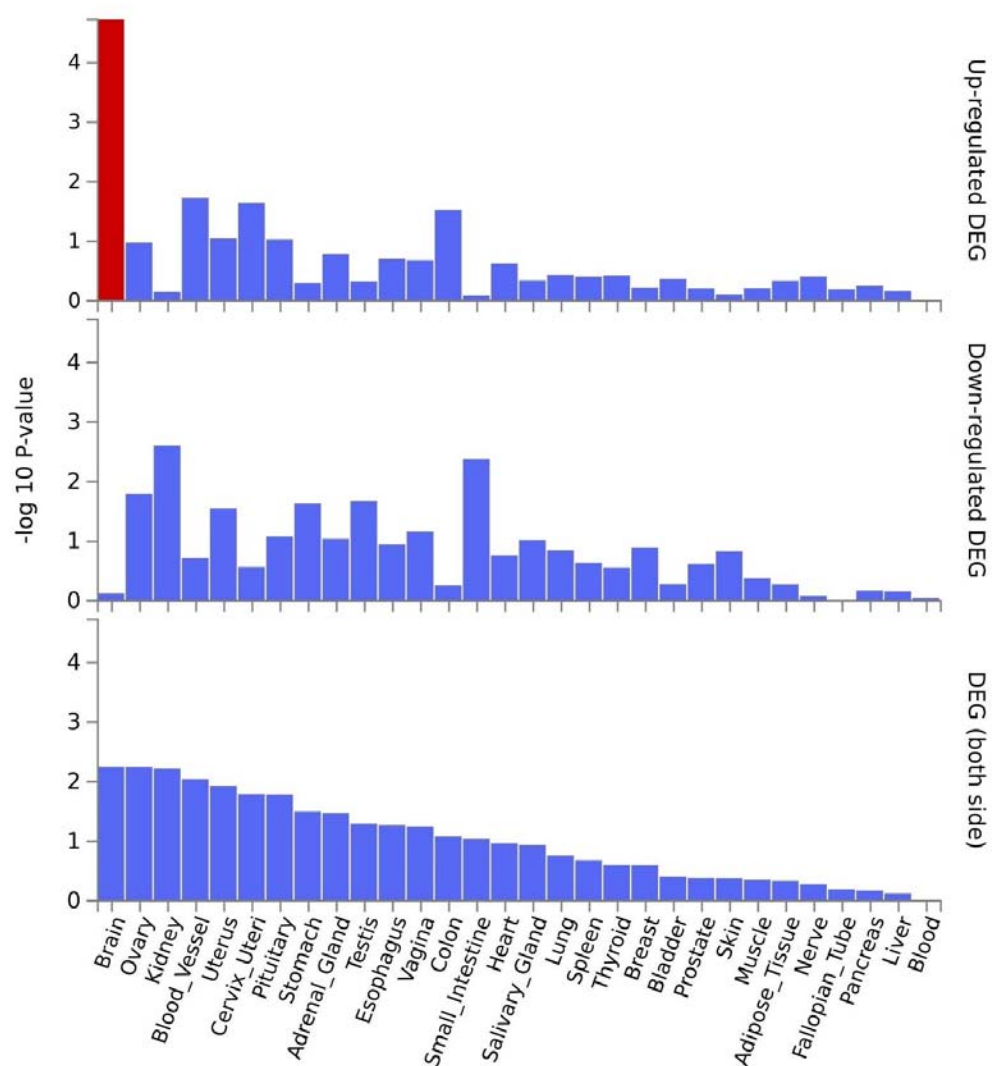


Figure S2. **A)** Differential gene expression (DEG) in 30 general GTEx tissues for genes linked to lead SNPs in distinct loci significantly associated with both AUD and BMI. Significant enrichment ($p < .05$ after Bonferroni correction) is highlighted in red. **B)** Gene expression heatmap for 30 GTEx general tissues for genes linked to lead SNPs in distinct loci significantly associated with both AUD and BMI.

A



B

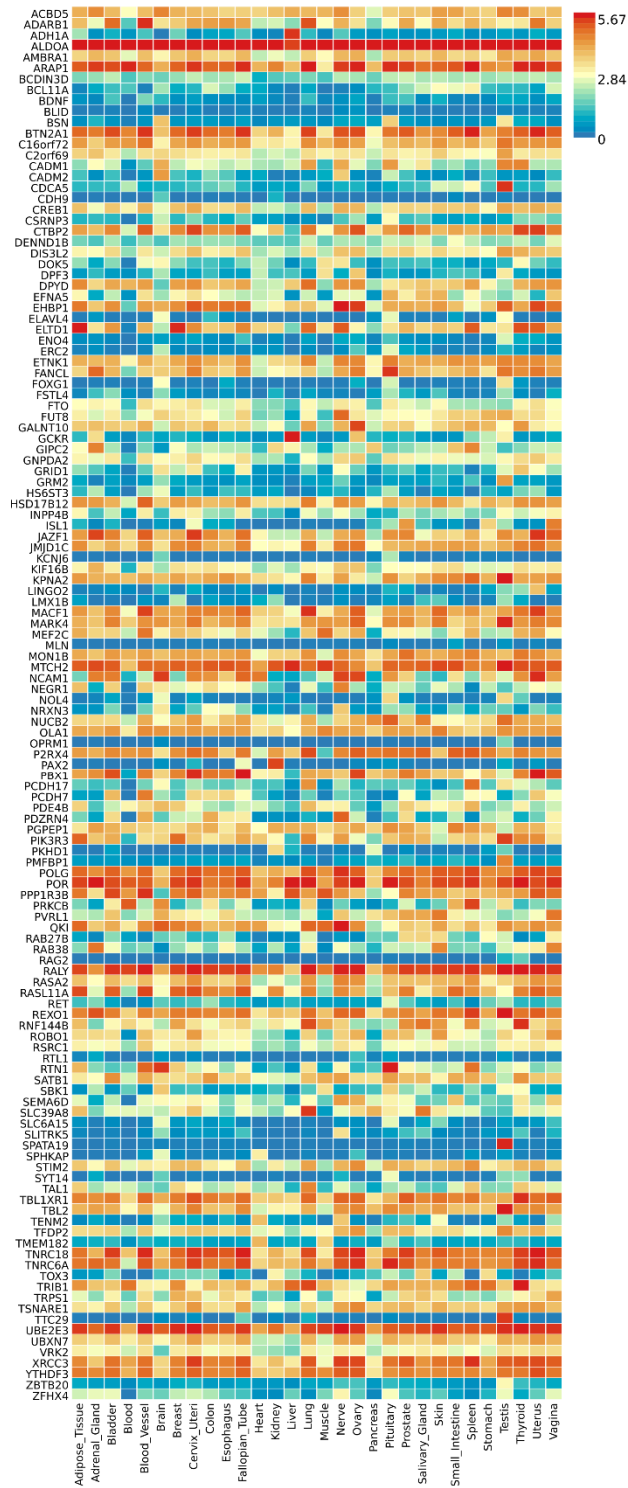
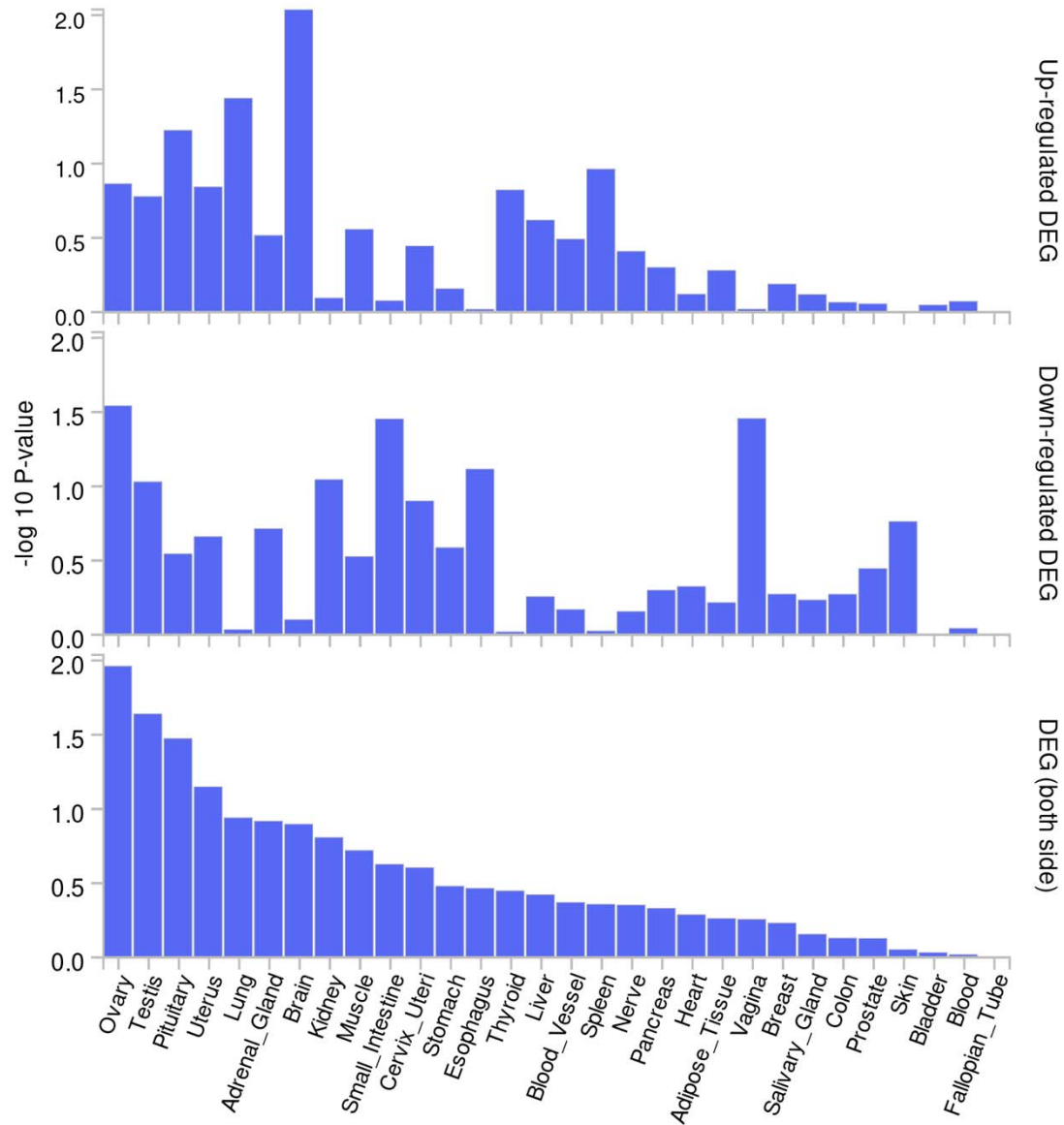
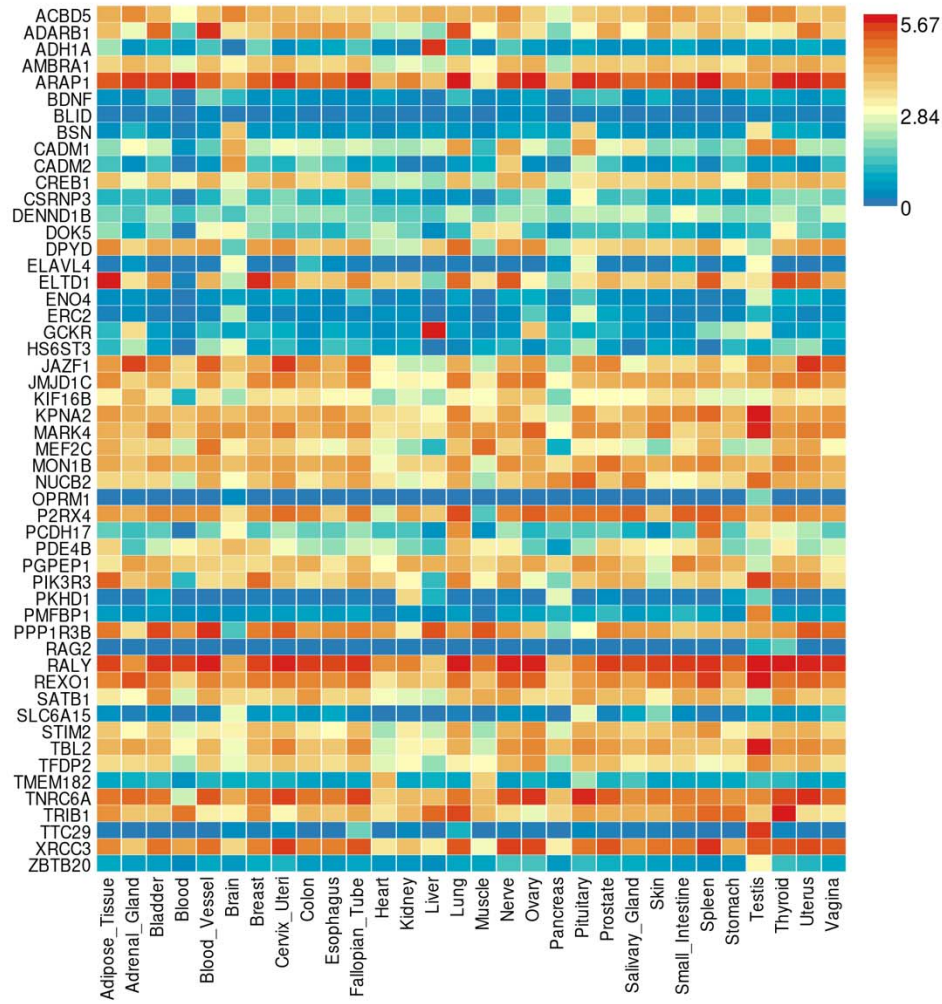


Figure S4. Concordant enrichment. **A)** Differential gene expression (DEG) in 30 general GTEx tissues for genes linked to concordant lead SNPs in distinct loci significantly associated with both AUD and BMI. There was no significant enrichment ($p < .05$ after Bonferroni correction). **B)** Gene expression heatmap for 30 GTEx general tissues for genes linked to concordant lead SNPs in distinct loci significantly associated with both AUD and BMI. **C)** Differential gene expression (DEG) in 54 general GTEx tissues for genes linked to concordant lead SNPs in distinct loci significantly associated with both AUD and BMI. Significant enrichment ($p < .05$ after Bonferroni correction) is highlighted in red. **D)** Gene expression heatmap for 54 GTEx general tissues for genes linked to concordant lead SNPs in distinct loci significantly associated with both AUD and BMI.

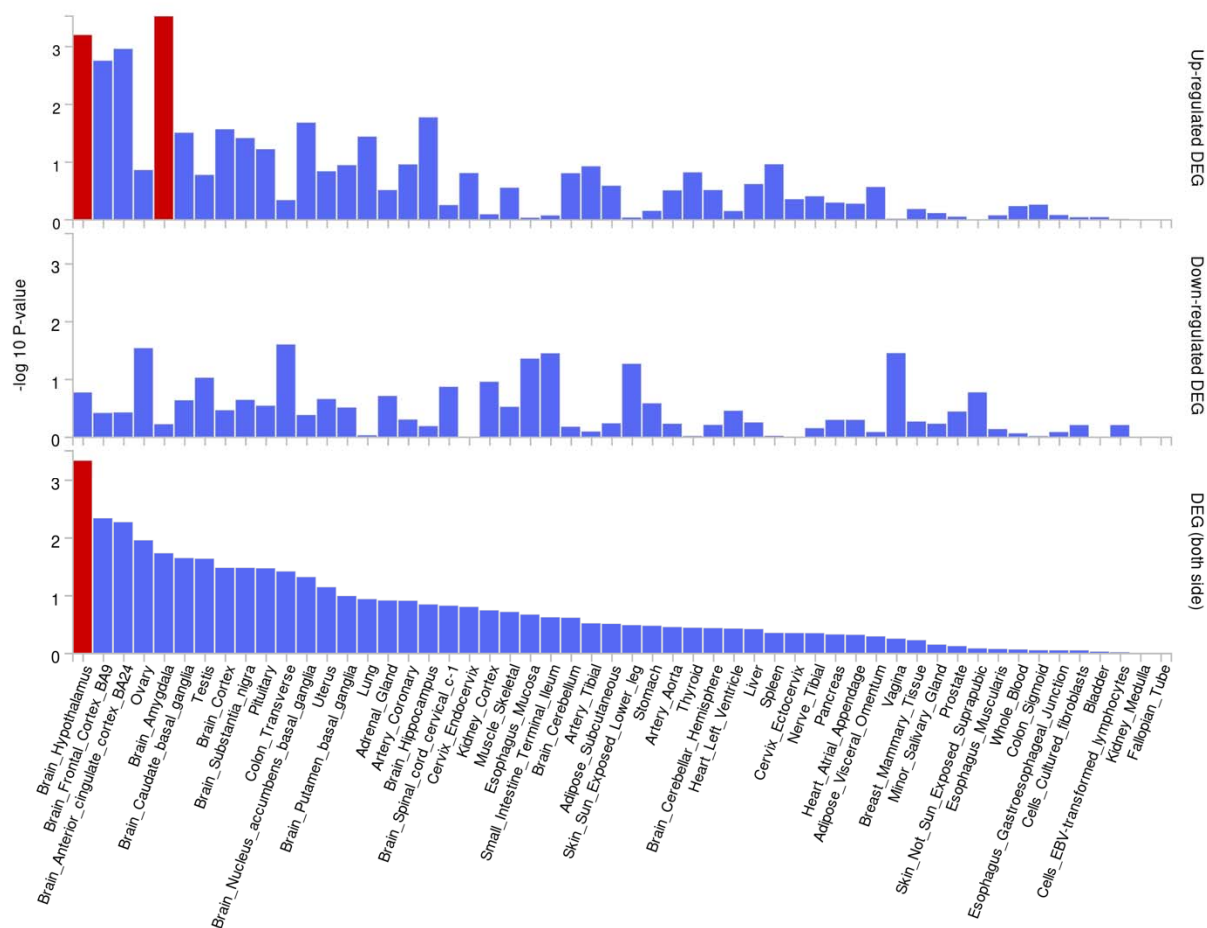
A



B



C



D

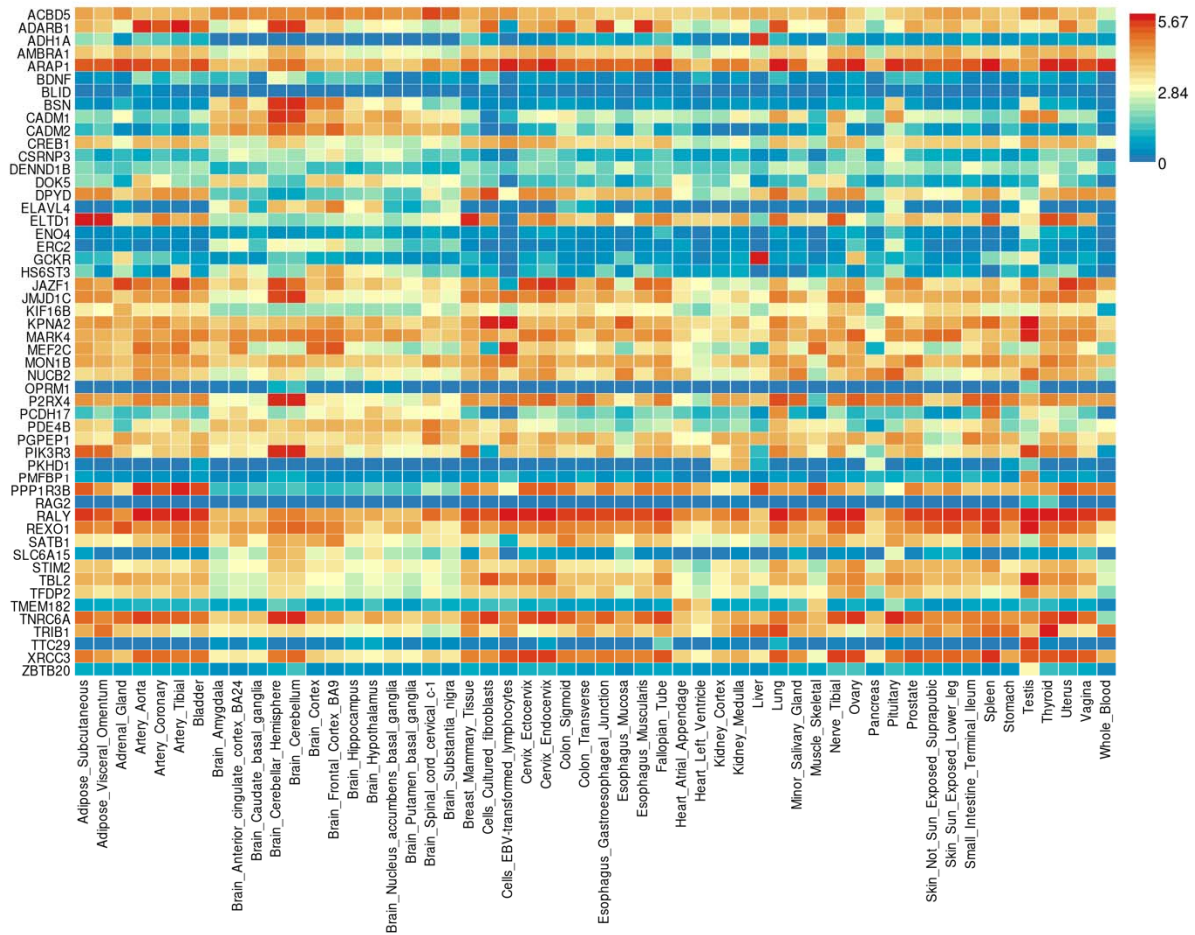
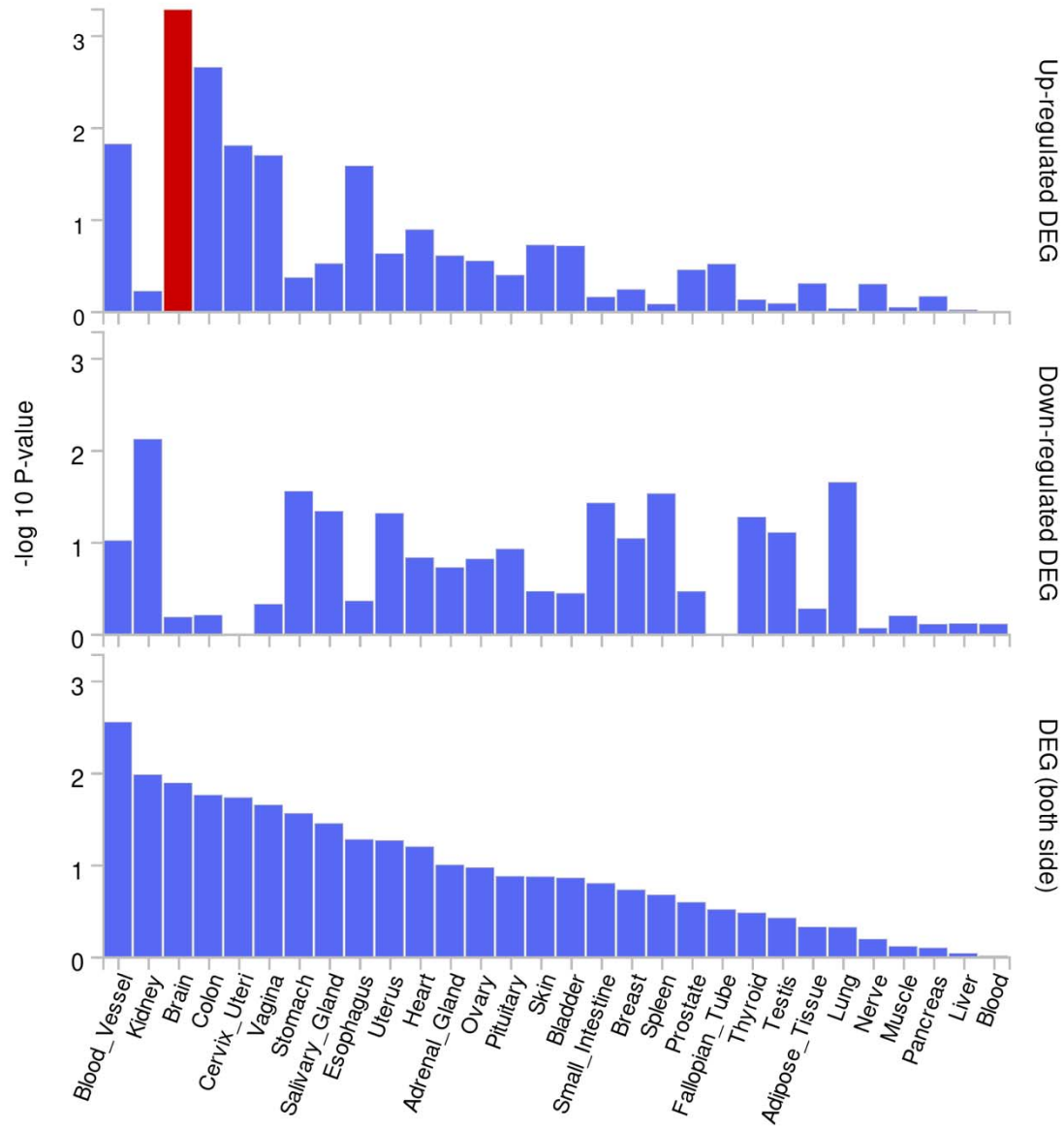
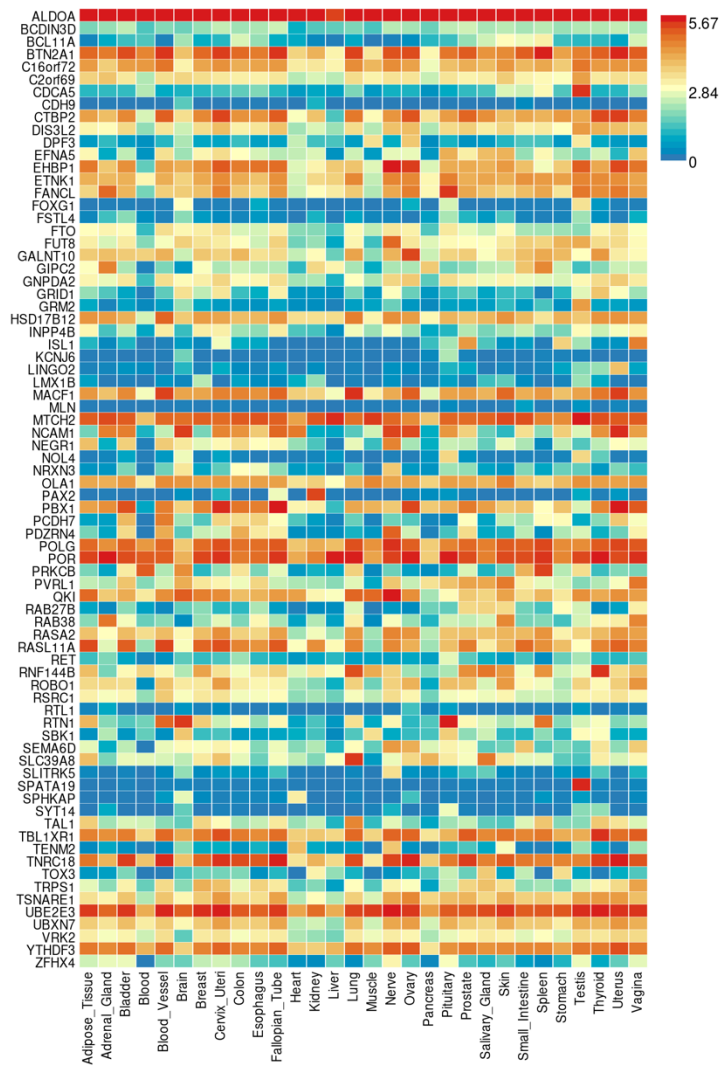


Figure S5. Discordant enrichment. **A)** Differential gene expression (DEG) in 30 general GTEx tissues for genes linked to discordant lead SNPs in distinct loci significantly associated with both AUD and BMI. There was no significant enrichment ($p < .05$ after Bonferroni correction). **B)** Gene expression heatmap for 30 GTEx general tissues for genes linked to discordant lead SNPs in distinct loci significantly associated with both AUD and BMI. **C)** Differential gene expression (DEG) in 54 general GTEx tissues for genes linked to discordant lead SNPs in distinct loci significantly associated with both AUD and BMI. Significant enrichment ($p < .05$ after Bonferroni correction) is highlighted in red. **D)** Gene expression heatmap for 54 GTEx general tissues for genes linked to discordant lead SNPs in distinct loci significantly associated with both AUD and BMI.

A



B



C

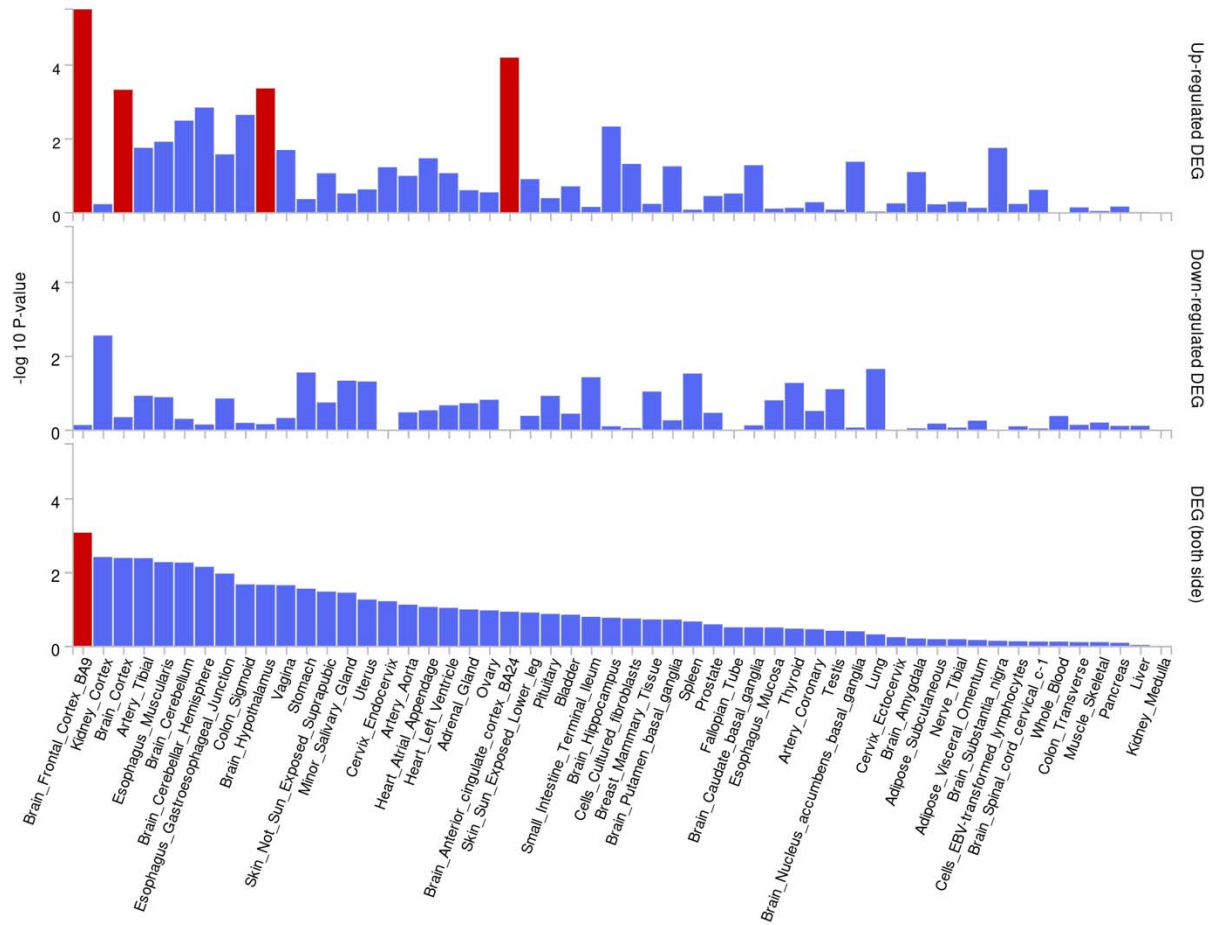


Figure S6. Structural brain features associated with AUD risk. LD-adjusted Z-scores are provided for region-specific associations of structural IDPs with AUD risk.

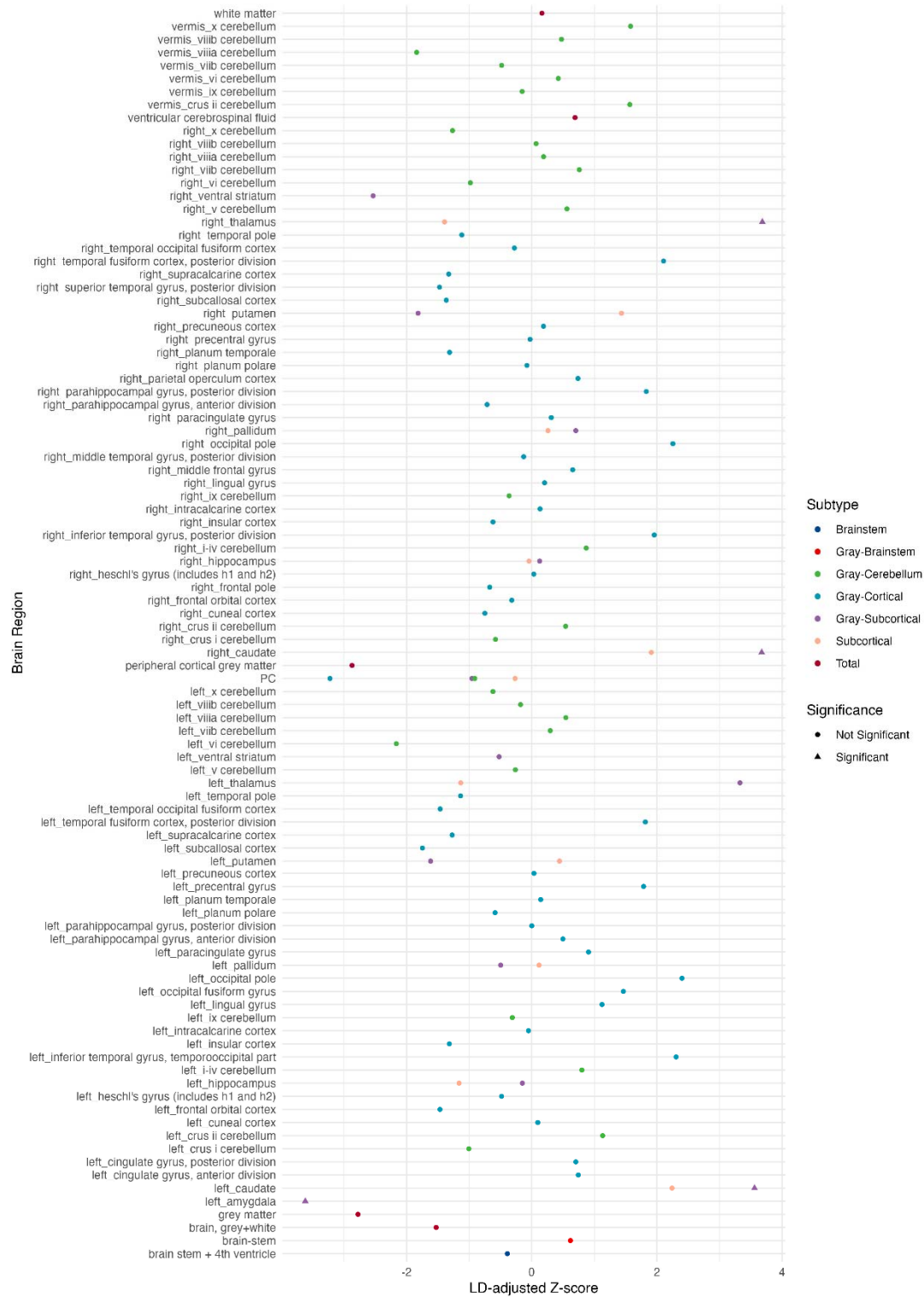


Figure S7. Diffusion features associated with AUD risk. LD-adjusted Z-scores are provided for region-specific associations of diffusion MRI IDPs with AUD risk.



Figure S8. Structural features associated with BMI risk. LD-adjusted Z-scores are provided for region-specific associations of structural IDPs with BMI risk.

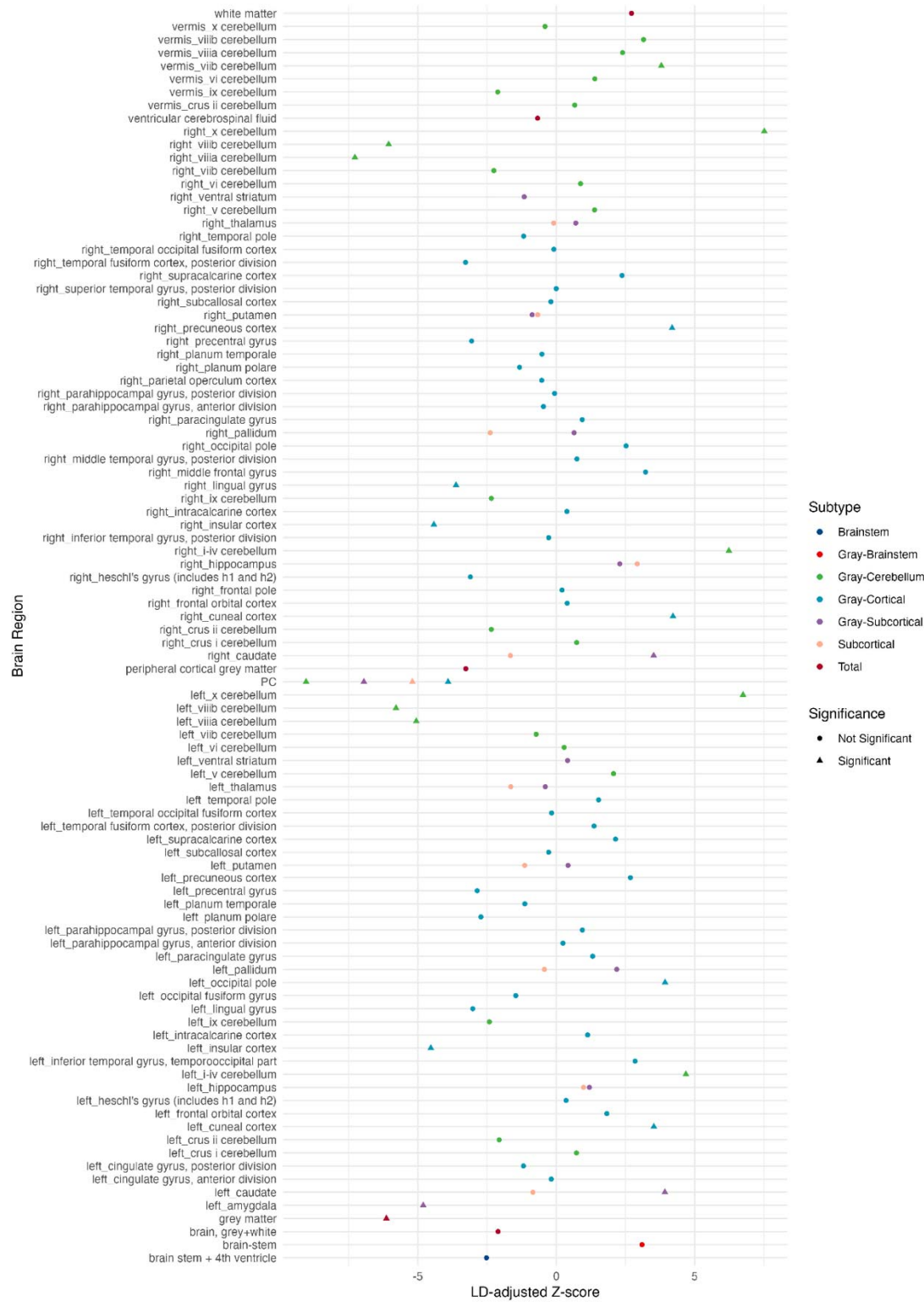


Figure S9. Diffusion features associated with BMI risk. LD-adjusted Z-scores are provided for region-specific associations of diffusion MRI IDPs with BMI risk.

