

# The avoidable health burden and healthcare costs related to alcohol consumption in Australia: multistate life table modelling

## Supplementary File

### Table of Contents

The avoidable health burden and healthcare costs related to alcohol consumption in Australia: multistate life table modelling .....	1
Supplementary File .....	1
Methods .....	2
Population, mortality and disability rates for Australia .....	2
The conceptual disease model.....	3
Disease inputs- Chronic diseases .....	4
Disease inputs- Acute causes.....	19
Costs for alcohol-related diseases and injuries.....	22
Relative risks.....	24
A schematic description of The Alcohol Policy (TAP) Model.....	27
Additional results from main analysis.....	28
Changes in incident cases of disease and injuries .....	28
Changes in mortality .....	29
Additional results from sensitivity analysis.....	30
Changes in incidence and mortality.....	30
Changes in Health adjusted life years (HALYs) .....	31
Changes in healthcare costs by area of expenditure .....	33
References.....	35

## Methods

### Population, mortality and disability rates for Australia

Table S1: Population and mortality rates for Australia by age & sex

Age	Population		Mortality rate*		Disability (YLD) rate <sup>#</sup>	
	Female	Male	Female	Male	Female	Male
2	745,435	789,571	0.00010	0.00015	0.02100	0.02392
7	787,135	832,349	0.00007	0.00008	0.04104	0.03917
12	778,240	824,582	0.00009	0.00009	0.06413	0.05643
17	720,171	766,260	0.00019	0.00036	0.09017	0.07568
22	827,034	877,255	0.00023	0.00056	0.11697	0.09528
27	937,176	947,862	0.00028	0.00063	0.13312	0.10792
32	962,651	946,250	0.00042	0.00083	0.14082	0.11515
37	926,037	914,471	0.00061	0.00114	0.14628	0.12060
42	819,684	801,478	0.00092	0.00162	0.15194	0.12617
47	851,473	831,387	0.00141	0.00230	0.15781	0.13329
52	796,781	771,543	0.00211	0.00343	0.16489	0.14391
57	799,113	767,984	0.00310	0.00517	0.17582	0.16023
62	741,684	697,841	0.00450	0.00759	0.19252	0.18325
67	652,820	609,962	0.00701	0.01138	0.21455	0.21151
72	570,355	540,698	0.01184	0.01847	0.24172	0.24274
77	399,519	368,497	0.02122	0.03175	0.27410	0.27492
82	286,797	239,938	0.04071	0.05823	0.31126	0.30604
87	184,232	130,996	0.08161	0.10785	0.35399	0.33838
92	100,243	56,505	0.15549	0.18247	0.40252	0.37302
97	34,029	13,210	0.26071	0.27289	0.45676	0.40980
Totals	12,920,609	12,728,639				

\* All-cause mortality rates <sup>#</sup> rates of disability (YLD) that is caused by all causes not explicitly included in the model

Data sources: 2020 age and sex specific all-cause mortality rates, population numbers and projections (projected forward over a 60-year period) for Australia taken from the Australian Bureau of Statistics (ABS) data and State/Territory-specific lifetables,<sup>1,2</sup> and rates of disability (YLD) from GBD 2019 data.<sup>3,4</sup>

## The conceptual disease model

Figure S1 shows the schematic description of how the disease-specific data are linked to the life table sections in a proportional multistate life table. It also shows the interaction with the disease models and the risk factor.

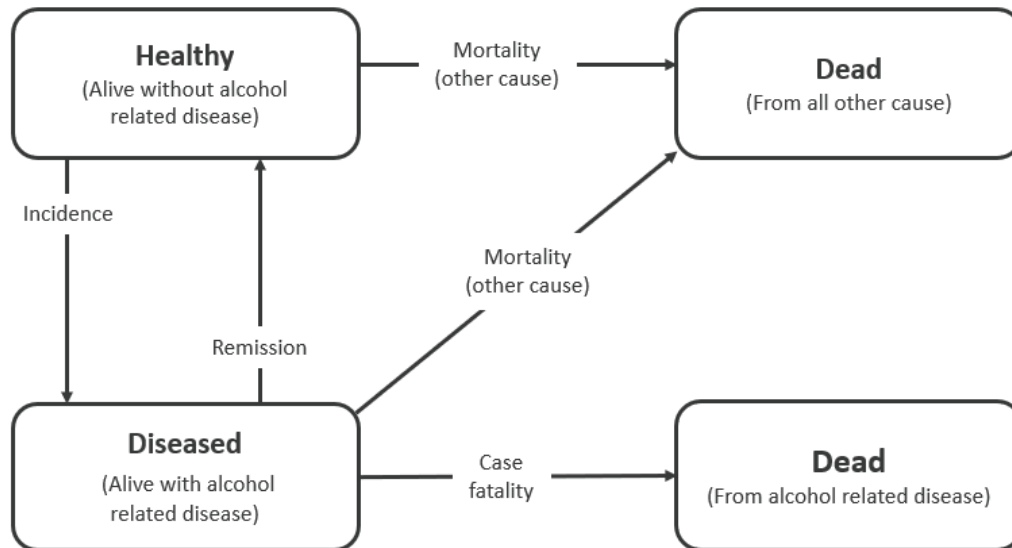


Figure S1: The conceptual disease model showing four states and four transition hazards (adapted from Barendregt et al.<sup>5</sup>)

## Disease inputs- Chronic diseases

Table S2: Epidemiological data for chronic diseases modelled (rates per 1)

Cause	Age group (years)	Female					Male				
		Case fatality*	Incidence	Prevalence	Remission	YLD (disability)	Case fatality*	Incidence	Prevalence	Remission	YLD (disability)
Atrial fibrillation and flutter	0-4	-	-	-	-	-	-	-	-	-	-
Atrial fibrillation and flutter	5-9	-	-	-	-	-	-	-	-	-	-
Atrial fibrillation and flutter	10-14	-	-	-	-	-	-	-	-	-	-
Atrial fibrillation and flutter	15-19	-	-	-	-	-	-	-	-	-	-
Atrial fibrillation and flutter	20-24	-	-	-	-	-	-	-	-	-	-
Atrial fibrillation and flutter	25-29	0.000156	0.000003	0.000004	-	-	0.000081	0.000009	0.000010	-	-
Atrial fibrillation and flutter	30-34	0.000772	0.000023	0.000057	-	-	0.000411	0.000063	0.000157	-	0.101310
Atrial fibrillation and flutter	35-39	0.000570	0.000083	0.000302	-	0.095877	0.000399	0.000227	0.000830	-	0.094048
Atrial fibrillation and flutter	40-44	0.000417	0.000204	0.000995	-	0.097173	0.000378	0.000520	0.002646	-	0.095473
Atrial fibrillation and flutter	45-49	0.000558	0.000416	0.002500	-	0.097275	0.000436	0.000991	0.006324	-	0.095620
Atrial fibrillation and flutter	50-54	0.000582	0.000830	0.005457	-	0.097562	0.000441	0.001730	0.012902	-	0.095950
Atrial fibrillation and flutter	55-59	0.000667	0.001702	0.011423	-	0.098312	0.000544	0.002852	0.023914	-	0.096767
Atrial fibrillation and flutter	60-64	0.000907	0.003307	0.023359	-	0.098742	0.000753	0.004374	0.041176	-	0.097978
Atrial fibrillation and flutter	65-69	0.001193	0.005413	0.044164	-	0.099794	0.001030	0.005902	0.065372	-	0.099342
Atrial fibrillation and flutter	70-74	0.001895	0.006954	0.073207	-	0.101047	0.001637	0.006640	0.094113	-	0.101122

Atrial fibrillation and flutter	75-79	0.003450	0.007221	0.104832	-	0.102932	0.002894	0.006322	0.122198	-	0.102924
Atrial fibrillation and flutter	80-84	0.007231	0.006169	0.132137	-	0.105802	0.005820	0.005251	0.145058	-	0.105729
Atrial fibrillation and flutter	85-89	0.017576	0.004248	0.147568	-	0.109098	0.013097	0.003861	0.158550	-	0.108210
Atrial fibrillation and flutter	90-94	0.040176	0.002845	0.144738	-	0.113608	0.027574	0.002910	0.159221	-	0.110964
Atrial fibrillation and flutter	95+	0.065087	0.002306	0.124710	-	0.120468	0.044054	0.002579	0.147270	-	0.115853
Breast cancer	0-4	-	-	-	-	-					
Breast cancer	5-9	0.000268	0.000000	0.000000	0.000000	-					
Breast cancer	10-14	0.005633	0.000002	0.000005	0.000003	-					
Breast cancer	15-19	0.010705	0.000005	0.000024	0.000006	0.080212					
Breast cancer	20-24	0.013894	0.000012	0.000057	0.000006	0.100335					
Breast cancer	25-29	0.022769	0.000066	0.000191	0.000006	0.102260					
Breast cancer	30-34	0.025056	0.000263	0.000895	0.000006	0.100609					
Breast cancer	35-39	0.022924	0.000560	0.002708	0.000006	0.096704					
Breast cancer	40-44	0.019458	0.000985	0.006056	0.000006	0.094184					
Breast cancer	45-49	0.016898	0.001476	0.011405	0.000006	0.091080					
Breast cancer	50-54	0.016136	0.001912	0.018335	0.010186	0.089131					
Breast cancer	55-59	0.016409	0.002292	0.024321	0.033405	0.085509					
Breast cancer	60-64	0.016717	0.002767	0.030164	0.026383	0.083060					
Breast cancer	65-69	0.017308	0.003223	0.037500	0.028789	0.083100					
Breast cancer	70-74	0.018841	0.003474	0.043279	0.038336	0.083857					
Breast cancer	75-79	0.021912	0.003658	0.046789	0.040523	0.085840					

Breast cancer	80-84	0.027597	0.003904	0.049647	0.040361	0.092302					
Breast cancer	85-89	0.039022	0.003891	0.049400	0.050312	0.099444					
Breast cancer	90-94	0.060138	0.003320	0.043416	0.051231	0.093749					
Breast cancer	95+	0.082867	0.003520	0.037935	0.020102	0.084837					
Cirrhosis	0-4	0.000051	0.000119	0.004162	-	0.002120	0.000052	0.000151	0.004808	-	0.001185
Cirrhosis	5-9	0.000036	0.000844	0.006396	-	0.001150	0.000027	0.000872	0.007152	-	0.000762
Cirrhosis	10-14	0.000025	0.001551	0.012457	-	0.001041	0.000010	0.001978	0.014117	-	0.000661
Cirrhosis	15-19	0.000020	0.004787	0.026205	-	0.000371	0.000008	0.010418	0.039584	-	0.000136
Cirrhosis	20-24	0.000018	0.008974	0.061137	-	0.000228	0.000009	0.020863	0.117247	-	0.000078
Cirrhosis	25-29	0.000025	0.007039	0.100057	-	0.000138	0.000018	0.014996	0.197024	-	0.000050
Cirrhosis	30-34	0.000060	0.002097	0.120140	-	0.000136	0.000053	0.004218	0.233871	-	0.000057
Cirrhosis	35-39	0.000120	0.002042	0.127011	-	0.000173	0.000111	0.003434	0.244602	-	0.000078
Cirrhosis	40-44	0.000205	0.003008	0.138596	-	0.000250	0.000214	0.006227	0.263064	-	0.000162
Cirrhosis	45-49	0.000297	0.003760	0.152298	-	0.000289	0.000369	0.006235	0.286140	-	0.000243
Cirrhosis	50-54	0.000396	0.004108	0.169902	-	0.000367	0.000576	0.003727	0.303716	-	0.000344
Cirrhosis	55-59	0.000504	0.001765	0.181238	-	0.000421	0.000813	0.000670	0.310149	-	0.000430
Cirrhosis	60-64	0.000557	0.003231	0.189460	-	0.000399	0.000939	0.000469	0.310022	-	0.000416
Cirrhosis	65-69	0.000564	0.007690	0.210467	-	0.000334	0.000966	0.004014	0.316057	-	0.000351
Cirrhosis	70-74	0.000590	0.008183	0.242672	-	0.000353	0.000981	0.003243	0.329372	-	0.000369
Cirrhosis	75-79	0.000674	0.005367	0.267011	-	0.000345	0.001046	0.001796	0.334907	-	0.000342
Cirrhosis	80-84	0.000848	0.003012	0.281635	-	0.000324	0.001221	0.003168	0.342949	-	0.000345

Cirrhosis	85-89	0.001261	0.000538	0.286557	-	0.000326	0.001640	0.000660	0.347772	-	0.000341
Cirrhosis	90-94	0.002188	0.000006	0.285307	-	0.000413	0.002438	0.000006	0.346005	-	0.000396
Cirrhosis	95+	0.003487	0.000006	0.282455	-	0.000540	0.003239	0.000006	0.342804	-	0.000372
Colon and rectum cancer	0-4	0.010827	0.000001	0.000004	0.002884	-	0.010712	0.000002	0.000004	0.004543	-
Colon and rectum cancer	5-9	0.018404	0.000001	0.000009	0.053445	0.141345	0.019309	0.000002	0.000010	0.084253	0.139549
Colon and rectum cancer	10-14	0.024966	0.000002	0.000013	0.043168	0.129235	0.024431	0.000002	0.000012	0.068052	0.130250
Colon and rectum cancer	15-19	0.028131	0.000004	0.000023	0.002061	0.122211	0.028610	0.000004	0.000020	0.003246	0.123717
Colon and rectum cancer	20-24	0.031872	0.000011	0.000051	0.000006	0.125610	0.036902	0.000011	0.000049	0.000006	0.120000
Colon and rectum cancer	25-29	0.037398	0.000029	0.000129	0.000006	0.119658	0.041801	0.000030	0.000128	0.000006	0.116166
Colon and rectum cancer	30-34	0.037808	0.000067	0.000322	0.000006	0.110129	0.040324	0.000068	0.000322	0.000006	0.107443
Colon and rectum cancer	35-39	0.032753	0.000109	0.000673	0.000006	0.105032	0.034791	0.000115	0.000682	0.000006	0.106516
Colon and rectum cancer	40-44	0.030033	0.000179	0.001232	0.000006	0.104408	0.032539	0.000198	0.001287	0.000006	0.103462
Colon and rectum cancer	45-49	0.030906	0.000303	0.002163	0.000006	0.103780	0.034273	0.000355	0.002340	0.000006	0.100095
Colon and rectum cancer	50-54	0.031871	0.000479	0.003593	0.011198	0.097410	0.036052	0.000615	0.004134	0.002526	0.097879
Colon and rectum cancer	55-59	0.033397	0.000724	0.005229	0.037911	0.098768	0.037515	0.001036	0.006949	0.011597	0.100810
Colon and rectum cancer	60-64	0.037523	0.001120	0.007465	0.034264	0.101519	0.040990	0.001715	0.011099	0.024650	0.104345
Colon and rectum cancer	65-69	0.038829	0.001574	0.010949	0.029872	0.103497	0.043017	0.002526	0.016579	0.034059	0.106972
Colon and rectum cancer	70-74	0.041160	0.002229	0.015767	0.026145	0.109105	0.045433	0.003463	0.023189	0.040618	0.112642
Colon and rectum cancer	75-79	0.048625	0.003161	0.021824	0.041729	0.114033	0.053258	0.004554	0.029579	0.064612	0.122556
Colon and rectum cancer	80-84	0.065082	0.004146	0.025616	0.082642	0.127487	0.071390	0.005563	0.031711	0.103905	0.138392
Colon and rectum cancer	85-89	0.107076	0.004755	0.024416	0.122776	0.149893	0.110715	0.005970	0.029005	0.130182	0.162181

Colon and rectum cancer	90-94	0.205881	0.004765	0.017248	0.161918	0.185777	0.191419	0.005624	0.021137	0.154807	0.191002
Colon and rectum cancer	95+	0.331217	0.005047	0.012123	0.122125	0.241555	0.283209	0.005869	0.015598	0.121471	0.230758
Diabetes mellitus type 2	0-4	-	-	-	-	-	-	-	-	-	-
Diabetes mellitus type 2	5-9	0.000048	0.000001	0.000000	-	-	0.000071	0.000000	0.000000	-	-
Diabetes mellitus type 2	10-14	0.001011	0.000011	0.000024	-	-	0.001496	0.000005	0.000010	-	-
Diabetes mellitus type 2	15-19	0.001699	0.000030	0.000125	-	-	0.002584	0.000010	0.000049	-	0.055882
Diabetes mellitus type 2	20-24	0.001056	0.000232	0.000596	-	0.059456	0.001677	0.000204	0.000390	-	0.058144
Diabetes mellitus type 2	25-29	0.000359	0.000806	0.003132	-	0.062945	0.000489	0.000822	0.002845	-	0.059996
Diabetes mellitus type 2	30-34	0.000251	0.001327	0.008453	-	0.067428	0.000323	0.001520	0.008638	-	0.064374
Diabetes mellitus type 2	35-39	0.000234	0.001886	0.016337	-	0.073490	0.000323	0.002305	0.018008	-	0.071845
Diabetes mellitus type 2	40-44	0.000250	0.002526	0.027073	-	0.079845	0.000331	0.003224	0.031401	-	0.078969
Diabetes mellitus type 2	45-49	0.000347	0.003205	0.040864	-	0.086111	0.000514	0.004224	0.049188	-	0.086017
Diabetes mellitus type 2	50-54	0.000472	0.003854	0.057572	-	0.092323	0.000807	0.005211	0.071180	-	0.092454
Diabetes mellitus type 2	55-59	0.000606	0.004504	0.076833	-	0.098619	0.001036	0.006316	0.097028	-	0.098096
Diabetes mellitus type 2	60-64	0.000850	0.005385	0.098998	-	0.105247	0.001390	0.008038	0.128063	-	0.104219
Diabetes mellitus type 2	65-69	0.001146	0.006404	0.124662	-	0.112522	0.001864	0.009873	0.165420	-	0.110852
Diabetes mellitus type 2	70-74	0.001647	0.007219	0.153267	-	0.117787	0.002546	0.009511	0.204214	-	0.115665
Diabetes mellitus type 2	75-79	0.002701	0.007148	0.182049	-	0.120341	0.003800	0.006983	0.233938	-	0.119286
Diabetes mellitus type 2	80-84	0.004858	0.005470	0.205271	-	0.123645	0.006223	0.004095	0.250345	-	0.123616
Diabetes mellitus type 2	85-89	0.009170	0.002451	0.215226	-	0.128260	0.010604	0.001746	0.253227	-	0.129077
Diabetes mellitus type 2	90-94	0.016931	0.000564	0.209908	-	0.135036	0.017280	0.000425	0.244013	-	0.135667



Diabetes mellitus type 2	95+	0.026557	0.000073	0.193293	-	0.144814	0.023602	0.000078	0.226213	-	0.145183
Epilepsy	0-4	0.001317	0.000689	0.002265	0.300728	0.241891	0.001302	0.000730	0.002173	0.329412	0.242837
Epilepsy	5-9	0.000963	0.000592	0.002589	0.176979	0.242955	0.000965	0.000630	0.002511	0.197222	0.241937
Epilepsy	10-14	0.000780	0.000498	0.003370	0.101922	0.245122	0.000809	0.000547	0.003276	0.122469	0.243903
Epilepsy	15-19	0.001079	0.000434	0.003832	0.101503	0.248984	0.001231	0.000499	0.003702	0.121333	0.246688
Epilepsy	20-24	0.001643	0.000375	0.003815	0.106551	0.252916	0.002263	0.000444	0.003765	0.122413	0.250593
Epilepsy	25-29	0.002092	0.000326	0.003516	0.110375	0.254309	0.003630	0.000383	0.003399	0.138996	0.252508
Epilepsy	30-34	0.002493	0.000296	0.003190	0.107248	0.254936	0.004795	0.000346	0.002941	0.136467	0.252511
Epilepsy	35-39	0.002781	0.000286	0.002972	0.104086	0.255988	0.005750	0.000336	0.002708	0.127222	0.247774
Epilepsy	40-44	0.003028	0.000275	0.002854	0.098445	0.257303	0.006464	0.000323	0.002634	0.119415	0.253932
Epilepsy	45-49	0.003216	0.000260	0.002767	0.099727	0.257593	0.006874	0.000299	0.002569	0.115865	0.254741
Epilepsy	50-54	0.003175	0.000254	0.002625	0.099698	0.260058	0.006816	0.000278	0.002488	0.106966	0.256323
Epilepsy	55-59	0.002927	0.000259	0.002718	0.071170	0.258415	0.006095	0.000270	0.002590	0.078431	0.258035
Epilepsy	60-64	0.003062	0.000269	0.003179	0.042359	0.263797	0.005042	0.000280	0.003018	0.046964	0.260471
Epilepsy	65-69	0.003057	0.000284	0.003915	0.027210	0.260483	0.004351	0.000307	0.003804	0.026400	0.263103
Epilepsy	70-74	0.003330	0.000311	0.004743	0.028557	0.267714	0.004595	0.000339	0.004799	0.024952	0.264918
Epilepsy	75-79	0.004130	0.000347	0.005529	0.027409	0.270567	0.005669	0.000378	0.005689	0.031205	0.272214
Epilepsy	80-84	0.005612	0.000373	0.006476	0.023925	0.279111	0.007131	0.000446	0.006529	0.034205	0.278753
Epilepsy	85-89	0.007893	0.000390	0.007035	0.039754	0.289320	0.009054	0.000539	0.007432	0.037657	0.285100
Epilepsy	90-94	0.009720	0.000443	0.007316	0.039374	0.299904	0.011624	0.000588	0.008417	0.034056	0.292696
Epilepsy	95+	0.011134	0.000521	0.007779	0.043526	0.317099	0.011998	0.000573	0.009297	0.034041	0.302919

Hypertensive heart disease	0-4	-	-	-	-	-	-	-	-	-	-
Hypertensive heart disease	5-9	0.001209	0.000000	0.000000	-	-	0.001269	0.000000	0.000000	-	-
Hypertensive heart disease	10-14	0.025383	0.000000	0.000000	-	-	0.026652	0.000000	0.000000	-	-
Hypertensive heart disease	15-19	0.044251	0.000000	0.000001	-	0.101821	0.048157	0.000000	0.000001	-	0.100557
Hypertensive heart disease	20-24	0.031500	0.000001	0.000003	-	0.104787	0.041246	0.000001	0.000003	-	0.102547
Hypertensive heart disease	25-29	0.016454	0.000001	0.000007	-	0.106446	0.035303	0.000002	0.000010	-	0.103628
Hypertensive heart disease	30-34	0.014402	0.000004	0.000018	-	0.107162	0.033692	0.000005	0.000024	-	0.104380
Hypertensive heart disease	35-39	0.016289	0.000009	0.000044	-	0.108108	0.031309	0.000013	0.000059	-	0.105348
Hypertensive heart disease	40-44	0.014758	0.000021	0.000109	-	0.110934	0.026713	0.000035	0.000158	-	0.106194
Hypertensive heart disease	45-49	0.011034	0.000041	0.000251	-	0.102452	0.022296	0.000064	0.000377	-	0.102479
Hypertensive heart disease	50-54	0.009400	0.000045	0.000467	-	0.102097	0.021245	0.000065	0.000670	-	0.101715
Hypertensive heart disease	55-59	0.010835	0.000032	0.000607	-	0.103897	0.024368	0.000038	0.000811	-	0.103300
Hypertensive heart disease	60-64	0.013541	0.000138	0.000906	-	0.104317	0.027529	0.000153	0.001079	-	0.103915
Hypertensive heart disease	65-69	0.011316	0.000469	0.002259	-	0.105124	0.021798	0.000492	0.002423	-	0.106038
Hypertensive heart disease	70-74	0.009890	0.000652	0.004997	-	0.106938	0.016337	0.000622	0.005021	-	0.107485
Hypertensive heart disease	75-79	0.013165	0.000838	0.008198	-	0.109848	0.017650	0.000638	0.007548	-	0.110601
Hypertensive heart disease	80-84	0.021191	0.001536	0.012912	-	0.113209	0.024377	0.001022	0.010516	-	0.113132
Hypertensive heart disease	85-89	0.038173	0.002808	0.021097	-	0.117314	0.036499	0.001817	0.015575	-	0.116114
Hypertensive heart disease	90-94	0.072961	0.004109	0.030896	-	0.122268	0.058907	0.002496	0.021839	-	0.119404
Hypertensive heart disease	95+	0.119203	0.005608	0.038069	-	0.129469	0.092450	0.003252	0.026780	-	0.124669
Intracerebral haemorrhage	0-4	0.001903	0.000009	0.000064	-	0.160009	0.002690	0.000005	0.000036	-	0.128524

Intracerebral haemorrhage	5-9	0.001370	0.000020	0.000133	-	0.158294	0.001585	0.000012	0.000077	-	0.128114
Intracerebral haemorrhage	10-14	0.000980	0.000027	0.000251	-	0.162285	0.000946	0.000018	0.000154	-	0.131934
Intracerebral haemorrhage	15-19	0.001026	0.000027	0.000385	-	0.169805	0.001311	0.000019	0.000245	-	0.137692
Intracerebral haemorrhage	20-24	0.001310	0.000028	0.000520	-	0.177974	0.002202	0.000021	0.000342	-	0.143113
Intracerebral haemorrhage	25-29	0.001798	0.000031	0.000664	-	0.176468	0.003561	0.000024	0.000448	-	0.147594
Intracerebral haemorrhage	30-34	0.002969	0.000034	0.000818	-	0.177469	0.005942	0.000029	0.000567	-	0.149780
Intracerebral haemorrhage	35-39	0.004312	0.000036	0.000977	-	0.177289	0.008698	0.000036	0.000706	-	0.150639
Intracerebral haemorrhage	40-44	0.006503	0.000042	0.001141	-	0.176590	0.013618	0.000050	0.000875	-	0.147809
Intracerebral haemorrhage	45-49	0.009879	0.000052	0.001324	-	0.174898	0.020821	0.000071	0.001089	-	0.147585
Intracerebral haemorrhage	50-54	0.014355	0.000069	0.001539	-	0.170903	0.029265	0.000101	0.001362	-	0.150202
Intracerebral haemorrhage	55-59	0.020949	0.000093	0.001795	-	0.171709	0.040328	0.000138	0.001690	-	0.151226
Intracerebral haemorrhage	60-64	0.032568	0.000130	0.002091	-	0.177274	0.059017	0.000188	0.002042	-	0.154300
Intracerebral haemorrhage	65-69	0.051905	0.000179	0.002386	-	0.186411	0.094886	0.000252	0.002306	-	0.159049
Intracerebral haemorrhage	70-74	0.083582	0.000286	0.002673	-	0.206811	0.169668	0.000373	0.002330	-	0.180878
Intracerebral haemorrhage	75-79	0.160795	0.000502	0.002938	-	0.236173	0.344236	0.000622	0.002049	-	0.216862
Intracerebral haemorrhage	80-84	0.298766	0.000894	0.002973	-	0.263717	0.632955	0.001056	0.001719	-	0.251162
Intracerebral haemorrhage	85-89	0.500112	0.001553	0.003074	-	0.297676	1.019878	0.001721	0.001687	-	0.283218
Intracerebral haemorrhage	90-94	0.823965	0.002466	0.003023	-	0.331943	1.565053	0.002607	0.001665	-	0.310154
Intracerebral haemorrhage	95+	1.113975	0.003296	0.002962	-	0.368336	1.901718	0.003318	0.001731	-	0.350962
Ischaemic heart disease	0-4	-	-	-	-	-	-	-	-	-	-
Ischaemic heart disease	5-9	0.000046	0.000001	0.000001	0.000190	-	0.000088	0.000003	0.000001	0.007362	-

Ischaemic heart disease	10-14	0.000961	0.000022	0.000048	0.003980	-	0.001847	0.000061	0.000112	0.154606	-
Ischaemic heart disease	15-19	0.001823	0.000048	0.000220	0.029386	0.000793	0.003487	0.000133	0.000352	0.235116	0.004804
Ischaemic heart disease	20-24	0.001996	0.000088	0.000443	0.072318	0.010454	0.003769	0.000268	0.000783	0.142717	0.010224
Ischaemic heart disease	25-29	0.002795	0.000184	0.000846	0.086551	0.012037	0.005052	0.000647	0.002032	0.139293	0.008673
Ischaemic heart disease	30-34	0.004161	0.000262	0.001575	0.040803	0.011993	0.006718	0.001138	0.004450	0.101751	0.007970
Ischaemic heart disease	35-39	0.005559	0.000320	0.002757	0.008456	0.012847	0.007933	0.001708	0.008977	0.042198	0.008189
Ischaemic heart disease	40-44	0.006980	0.000497	0.004564	0.000006	0.016138	0.008333	0.002985	0.017979	0.021284	0.009375
Ischaemic heart disease	45-49	0.007738	0.000908	0.007692	0.004041	0.020055	0.008170	0.005526	0.033832	0.030083	0.010479
Ischaemic heart disease	50-54	0.007630	0.001637	0.012948	0.015441	0.021361	0.007882	0.009515	0.059537	0.039141	0.010163
Ischaemic heart disease	55-59	0.007711	0.002881	0.021140	0.029423	0.019481	0.007702	0.015123	0.094143	0.055544	0.009523
Ischaemic heart disease	60-64	0.008320	0.004912	0.034342	0.031335	0.021107	0.007960	0.022370	0.141486	0.047030	0.010729
Ischaemic heart disease	65-69	0.008982	0.007553	0.056988	0.012865	0.029068	0.008248	0.030515	0.211386	0.029800	0.014638
Ischaemic heart disease	70-74	0.010782	0.011149	0.092803	0.012663	0.036192	0.009304	0.040239	0.298663	0.029655	0.018673
Ischaemic heart disease	75-79	0.015863	0.015972	0.133900	0.026883	0.038470	0.012516	0.052380	0.378490	0.039320	0.020828
Ischaemic heart disease	80-84	0.028256	0.021664	0.175746	0.033168	0.042251	0.020197	0.067686	0.446800	0.045284	0.024137
Ischaemic heart disease	85-89	0.060356	0.030175	0.208751	0.042361	0.054551	0.037972	0.087611	0.493847	0.059393	0.030779
Ischaemic heart disease	90-94	0.133793	0.049466	0.225919	0.055335	0.070327	0.074377	0.113177	0.496048	0.084883	0.039012
Ischaemic heart disease	95+	0.227898	0.076930	0.242044	0.049524	0.080577	0.122290	0.141035	0.480148	0.091882	0.049331
Ischaemic stroke	0-4	0.000302	0.000007	0.000270	-	0.161765	0.000429	0.000004	0.000152	-	0.128426
Ischaemic stroke	5-9	0.000163	0.000080	0.000476	-	0.156636	0.000227	0.000045	0.000268	-	0.127531
Ischaemic stroke	10-14	0.000072	0.000105	0.000976	-	0.160744	0.000097	0.000059	0.000548	-	0.131224

Ischaemic stroke	15-19	0.000070	0.000086	0.001445	-	0.159386	0.000099	0.000050	0.000816	-	0.135602
Ischaemic stroke	20-24	0.000091	0.000089	0.001873	-	0.166588	0.000144	0.000053	0.001069	-	0.139753
Ischaemic stroke	25-29	0.000139	0.000110	0.002365	-	0.168886	0.000229	0.000062	0.001352	-	0.143246
Ischaemic stroke	30-34	0.000257	0.000140	0.002981	-	0.169871	0.000358	0.000084	0.001708	-	0.141057
Ischaemic stroke	35-39	0.000358	0.000187	0.003782	-	0.168402	0.000564	0.000126	0.002217	-	0.140167
Ischaemic stroke	40-44	0.000462	0.000261	0.004878	-	0.164243	0.000852	0.000204	0.003018	-	0.142667
Ischaemic stroke	45-49	0.000574	0.000355	0.006393	-	0.163506	0.001295	0.000305	0.004266	-	0.141067
Ischaemic stroke	50-54	0.000701	0.000482	0.008420	-	0.165060	0.001876	0.000440	0.006045	-	0.141781
Ischaemic stroke	55-59	0.001023	0.000680	0.011229	-	0.171137	0.002820	0.000659	0.008663	-	0.146747
Ischaemic stroke	60-64	0.001928	0.000963	0.015122	-	0.178393	0.005124	0.000950	0.012379	-	0.153200
Ischaemic stroke	65-69	0.003077	0.001486	0.020804	-	0.185359	0.007556	0.001470	0.017768	-	0.158057
Ischaemic stroke	70-74	0.006726	0.002245	0.029255	-	0.202994	0.013143	0.002129	0.025483	-	0.179582
Ischaemic stroke	75-79	0.015291	0.003225	0.040560	-	0.231949	0.024043	0.002866	0.034858	-	0.213264
Ischaemic stroke	80-84	0.036976	0.004558	0.053358	-	0.260825	0.051266	0.003668	0.043779	-	0.243267
Ischaemic stroke	85-89	0.099213	0.007078	0.062446	-	0.289659	0.133767	0.005215	0.045680	-	0.272361
Ischaemic stroke	90-94	0.245888	0.012891	0.059710	-	0.319928	0.330658	0.009796	0.036663	-	0.299198
Ischaemic stroke	95+	0.451657	0.022486	0.052057	-	0.355287	0.606623	0.016827	0.029009	-	0.330784
Larynx and pharynx cancer	0-4	0.008693	0.000001	0.000002	-	-	0.002043	0.000000	0.000001	-	-
Larynx and pharynx cancer	5-9	0.011543	0.000001	0.000007	-	0.072516	0.038953	0.000000	0.000003	-	0.081013
Larynx and pharynx cancer	10-14	0.012261	0.000001	0.000011	-	0.073312	0.054046	0.000000	0.000003	-	0.083460
Larynx and pharynx cancer	15-19	0.010665	0.000001	0.000015	-	0.076193	0.043055	0.000001	0.000005	-	0.089205

Larynx and pharynx cancer	20-24	0.010338	0.000002	0.000021	-	0.074131	0.033216	0.000002	0.000009	-	0.070456
Larynx and pharynx cancer	25-29	0.012393	0.000004	0.000032	-	0.077449	0.025800	0.000004	0.000020	-	0.073732
Larynx and pharynx cancer	30-34	0.014528	0.000009	0.000060	-	0.084777	0.026732	0.000007	0.000043	-	0.086337
Larynx and pharynx cancer	35-39	0.017161	0.000011	0.000105	-	0.090304	0.033645	0.000015	0.000087	-	0.096613
Larynx and pharynx cancer	40-44	0.023438	0.000016	0.000157	-	0.101025	0.044206	0.000035	0.000183	-	0.109598
Larynx and pharynx cancer	45-49	0.038245	0.000023	0.000224	-	0.107123	0.061231	0.000071	0.000372	-	0.117952
Larynx and pharynx cancer	50-54	0.057934	0.000031	0.000293	-	0.112389	0.084568	0.000123	0.000661	-	0.125751
Larynx and pharynx cancer	55-59	0.074400	0.000041	0.000364	-	0.123757	0.109829	0.000191	0.001032	-	0.128180
Larynx and pharynx cancer	60-64	0.096789	0.000051	0.000426	-	0.134218	0.138788	0.000252	0.001384	-	0.134286
Larynx and pharynx cancer	65-69	0.119079	0.000062	0.000467	-	0.136557	0.153017	0.000294	0.001637	-	0.136413
Larynx and pharynx cancer	70-74	0.137747	0.000072	0.000493	-	0.151021	0.161840	0.000332	0.001832	-	0.143113
Larynx and pharynx cancer	75-79	0.175402	0.000076	0.000486	-	0.153879	0.187783	0.000355	0.001926	-	0.144974
Larynx and pharynx cancer	80-84	0.210015	0.000081	0.000424	-	0.200289	0.222877	0.000359	0.001779	-	0.159929
Larynx and pharynx cancer	85-89	0.243841	0.000094	0.000420	-	0.210438	0.250221	0.000362	0.001616	-	0.174904
Larynx and pharynx cancer	90-94	0.503370	0.000085	0.000257	-	0.265149	0.322635	0.000309	0.001251	-	0.205240
Larynx and pharynx cancer	95+	0.752737	0.000081	0.000123	-	0.388872	0.360669	0.000265	0.000876	-	0.194414
Lip and oral cavity cancer	0-4	0.005473	0.000001	0.000002	-	-	0.005636	0.000001	0.000001	-	-
Lip and oral cavity cancer	5-9	0.021915	0.000001	0.000005	-	0.075081	0.023928	0.000001	0.000004	-	0.074730
Lip and oral cavity cancer	10-14	0.031163	0.000001	0.000009	-	0.077762	0.031973	0.000001	0.000006	-	0.076885
Lip and oral cavity cancer	15-19	0.028321	0.000002	0.000013	-	0.079842	0.028030	0.000001	0.000010	-	0.079564
Lip and oral cavity cancer	20-24	0.026543	0.000003	0.000022	-	0.083504	0.027633	0.000003	0.000019	-	0.083715

Lip and oral cavity cancer	25-29	0.033336	0.000006	0.000039	-	0.086007	0.032478	0.000007	0.000040	-	0.084048
Lip and oral cavity cancer	30-34	0.042463	0.000008	0.000064	-	0.088647	0.037681	0.000015	0.000081	-	0.087612
Lip and oral cavity cancer	35-39	0.050500	0.000011	0.000094	-	0.090033	0.045524	0.000025	0.000156	-	0.088957
Lip and oral cavity cancer	40-44	0.068796	0.000016	0.000127	-	0.097320	0.063295	0.000038	0.000258	-	0.095619
Lip and oral cavity cancer	45-49	0.119063	0.000023	0.000156	-	0.105517	0.082571	0.000058	0.000375	-	0.103744
Lip and oral cavity cancer	50-54	0.198864	0.000030	0.000160	-	0.114033	0.100242	0.000093	0.000542	-	0.110617
Lip and oral cavity cancer	55-59	0.290693	0.000038	0.000146	-	0.134689	0.135719	0.000136	0.000740	-	0.114245
Lip and oral cavity cancer	60-64	0.406337	0.000049	0.000126	-	0.169776	0.190705	0.000177	0.000857	-	0.129891
Lip and oral cavity cancer	65-69	0.427210	0.000068	0.000141	-	0.188006	0.203573	0.000230	0.000962	-	0.140113
Lip and oral cavity cancer	70-74	0.424666	0.000093	0.000192	-	0.201506	0.204122	0.000277	0.001161	-	0.136846
Lip and oral cavity cancer	75-79	0.482928	0.000122	0.000239	-	0.209262	0.268651	0.000311	0.001233	-	0.148565
Lip and oral cavity cancer	80-84	0.614660	0.000164	0.000261	-	0.268790	0.431377	0.000342	0.000963	-	0.189621
Lip and oral cavity cancer	85-89	0.874617	0.000219	0.000260	-	0.302463	0.743718	0.000378	0.000612	-	0.267115
Lip and oral cavity cancer	90-94	1.417947	0.000271	0.000201	-	0.428395	1.364101	0.000387	0.000315	-	0.395132
Lip and oral cavity cancer	95+	1.847232	0.000277	0.000155	-	0.602575	1.836414	0.000360	0.000204	-	0.620887
Liver cancer	0-4	0.422951	0.000001	0.000002	-	0.176383	0.323901	0.000001	0.000002	-	0.107648
Liver cancer	5-9	0.211512	0.000001	0.000003	-	0.099828	0.173886	0.000001	0.000004	-	0.100325
Liver cancer	10-14	0.106864	0.000001	0.000006	-	0.102173	0.096446	0.000001	0.000007	-	0.105115
Liver cancer	15-19	0.133118	0.000000	0.000005	-	0.111714	0.112776	0.000000	0.000006	-	0.110453
Liver cancer	20-24	0.176929	0.000001	0.000004	-	0.136662	0.134781	0.000001	0.000007	-	0.124130
Liver cancer	25-29	0.280096	0.000001	0.000005	-	0.142884	0.180978	0.000003	0.000011	-	0.121941

Liver cancer	30-34	0.376228	0.000002	0.000006	-	0.163073	0.242806	0.000006	0.000018	-	0.134746
Liver cancer	35-39	0.418575	0.000004	0.000008	-	0.171527	0.268777	0.000011	0.000028	-	0.140303
Liver cancer	40-44	0.434064	0.000008	0.000014	-	0.176748	0.277937	0.000022	0.000053	-	0.143082
Liver cancer	45-49	0.469894	0.000016	0.000027	-	0.189454	0.300166	0.000047	0.000108	-	0.155189
Liver cancer	50-54	0.533077	0.000030	0.000047	-	0.198609	0.353246	0.000099	0.000207	-	0.168899
Liver cancer	55-59	0.609002	0.000051	0.000075	-	0.212472	0.442348	0.000174	0.000343	-	0.186217
Liver cancer	60-64	0.739590	0.000072	0.000092	-	0.233214	0.536614	0.000214	0.000395	-	0.199665
Liver cancer	65-69	0.856677	0.000107	0.000116	-	0.259810	0.635206	0.000273	0.000417	-	0.222447
Liver cancer	70-74	0.949224	0.000162	0.000159	-	0.277141	0.760003	0.000362	0.000463	-	0.260062
Liver cancer	75-79	1.082298	0.000230	0.000205	-	0.315212	0.905603	0.000457	0.000499	-	0.291792
Liver cancer	80-84	1.277121	0.000295	0.000229	-	0.354783	1.047324	0.000535	0.000511	-	0.328317
Liver cancer	85-89	1.541505	0.000322	0.000216	-	0.411713	1.288314	0.000551	0.000457	-	0.362039
Liver cancer	90-94	2.060979	0.000288	0.000148	-	0.515738	1.928356	0.000424	0.000244	-	0.502018
Liver cancer	95+	2.568673	0.000270	0.000107	-	0.684875	2.481620	0.000337	0.000141	-	0.667456
Oesophageal cancer	0-4	-	-	-	-	-	-	-	-	-	-
Oesophageal cancer	5-9	-	-	-	-	-	-	-	-	-	-
Oesophageal cancer	10-14	-	-	-	-	-	-	-	-	-	-
Oesophageal cancer	15-19	0.034096	0.000000	0.000000	-	-	0.067350	0.000000	0.000000	-	-
Oesophageal cancer	20-24	0.085178	0.000000	0.000001	-	0.112829	0.172028	0.000001	0.000002	-	0.129145
Oesophageal cancer	25-29	0.091585	0.000001	0.000003	-	0.118527	0.207007	0.000001	0.000004	-	0.140224
Oesophageal cancer	30-34	0.128623	0.000001	0.000005	-	0.124925	0.338569	0.000003	0.000006	-	0.156967



Oesophageal cancer	35-39	0.156919	0.000003	0.000009	-	0.130106	0.431107	0.000007	0.000012	-	0.158534
Oesophageal cancer	40-44	0.158454	0.000006	0.000020	-	0.127194	0.449443	0.000019	0.000030	-	0.175073
Oesophageal cancer	45-49	0.149295	0.000013	0.000043	-	0.122109	0.407236	0.000045	0.000077	-	0.168358
Oesophageal cancer	50-54	0.151796	0.000024	0.000088	-	0.137312	0.361124	0.000090	0.000176	-	0.176908
Oesophageal cancer	55-59	0.172753	0.000034	0.000140	-	0.149286	0.393706	0.000150	0.000314	-	0.186577
Oesophageal cancer	60-64	0.208830	0.000048	0.000185	-	0.152544	0.488258	0.000222	0.000419	-	0.203407
Oesophageal cancer	65-69	0.253995	0.000085	0.000256	-	0.160182	0.553189	0.000316	0.000522	-	0.203305
Oesophageal cancer	70-74	0.277333	0.000143	0.000391	-	0.176526	0.595499	0.000432	0.000670	-	0.226035
Oesophageal cancer	75-79	0.284035	0.000221	0.000603	-	0.207505	0.638708	0.000554	0.000822	-	0.249654
Oesophageal cancer	80-84	0.311294	0.000319	0.000865	-	0.190116	0.702420	0.000675	0.000936	-	0.276084
Oesophageal cancer	85-89	0.423580	0.000404	0.000999	-	0.249667	0.856926	0.000768	0.000937	-	0.316282
Oesophageal cancer	90-94	0.782550	0.000423	0.000669	-	0.346632	1.233367	0.000728	0.000649	-	0.401529
Oesophageal cancer	95+	1.570399	0.000481	0.000332	-	0.545001	1.750744	0.000705	0.000422	-	0.603865
Pancreatitis	0-4	0.000861	0.000034	0.000029	1.098036	0.124014	0.002171	0.000018	0.000013	1.313341	0.119795
Pancreatitis	5-9	0.000741	0.000048	0.000049	0.831822	0.091677	0.001233	0.000027	0.000022	1.082296	0.102970
Pancreatitis	10-14	0.000576	0.000078	0.000093	0.736849	0.093346	0.000783	0.000045	0.000041	1.005662	0.107181
Pancreatitis	15-19	0.000470	0.000150	0.000148	0.917696	0.114950	0.001413	0.000084	0.000066	1.163309	0.125558
Pancreatitis	20-24	0.000702	0.000264	0.000218	1.143835	0.135763	0.002929	0.000151	0.000104	1.341284	0.136442
Pancreatitis	25-29	0.001513	0.000369	0.000285	1.240521	0.142640	0.005400	0.000243	0.000160	1.413978	0.138573
Pancreatitis	30-34	0.002422	0.000415	0.000342	1.174796	0.135994	0.008590	0.000353	0.000233	1.425412	0.135855
Pancreatitis	35-39	0.003042	0.000410	0.000395	1.003637	0.123458	0.010211	0.000440	0.000312	1.337203	0.131119

Pancreatitis	40-44	0.004177	0.000402	0.000461	0.830734	0.108594	0.011513	0.000509	0.000404	1.191723	0.120698
Pancreatitis	45-49	0.005411	0.000419	0.000551	0.718601	0.103879	0.012911	0.000569	0.000514	1.046011	0.115445
Pancreatitis	50-54	0.006037	0.000451	0.000651	0.651669	0.099410	0.013867	0.000624	0.000634	0.927128	0.106993
Pancreatitis	55-59	0.006695	0.000492	0.000771	0.594985	0.096624	0.014740	0.000697	0.000776	0.836580	0.104184
Pancreatitis	60-64	0.008186	0.000571	0.000914	0.581385	0.096984	0.015788	0.000825	0.000982	0.772671	0.102282
Pancreatitis	65-69	0.010646	0.000691	0.001083	0.592004	0.094595	0.017093	0.001012	0.001227	0.766178	0.099647
Pancreatitis	70-74	0.015183	0.000849	0.001290	0.605301	0.092811	0.021543	0.001230	0.001431	0.811743	0.104749
Pancreatitis	75-79	0.025831	0.001058	0.001502	0.653747	0.098923	0.031784	0.001440	0.001540	0.893450	0.101110
Pancreatitis	80-84	0.045568	0.001316	0.001638	0.740206	0.112441	0.051406	0.001614	0.001542	1.000539	0.111809
Pancreatitis	85-89	0.077703	0.001581	0.001775	0.794744	0.108132	0.084422	0.001752	0.001459	1.132305	0.124685
Pancreatitis	90-94	0.129020	0.001792	0.001905	0.796587	0.108975	0.125295	0.001864	0.001343	1.278098	0.150821
Pancreatitis	95+	0.171612	0.001917	0.002007	0.773382	0.112242	0.162785	0.001927	0.001276	1.351917	0.160506

\*The majority of diabetes-related deaths are from IHD and stroke

We derived incidence, prevalence and case fatality from Global Burden of Disease data<sup>3</sup> using DisMod II software (SF Figure 1)<sup>5</sup> to estimate the epidemiological inputs to the model.

## Disease inputs- Acute causes

Table S3: Epidemiological data for acute causes (rates per 1)

Cause	Age group (years)	Female			Male		
		Incidence	Mortality	YLD (disability)	Incidence	Mortality	YLD (disability)
Alcohol use disorders	0-4	-	-	0.004643	-	-	0.002034
Alcohol use disorders	5-9	0.000406	-	0.040789	-	-	0.038766
Alcohol use disorders	10-14	0.002700	0.000000	0.090876	0.003235	0.000000	0.085186
Alcohol use disorders	15-19	0.007075	0.000001	0.163541	0.010126	0.000002	0.148813
Alcohol use disorders	20-24	0.010506	0.000002	0.202010	0.017621	0.000008	0.181153
Alcohol use disorders	25-29	0.011989	0.000005	0.206401	0.023109	0.000015	0.188015
Alcohol use disorders	30-34	0.011885	0.000008	0.194303	0.025801	0.000026	0.184639
Alcohol use disorders	35-39	0.011542	0.000013	0.185404	0.025955	0.000037	0.186877
Alcohol use disorders	40-44	0.010820	0.000018	0.194848	0.023155	0.000050	0.204427
Alcohol use disorders	45-49	0.009271	0.000021	0.211596	0.018221	0.000057	0.222313
Alcohol use disorders	50-54	0.007390	0.000020	0.225966	0.013543	0.000058	0.231306
Alcohol use disorders	55-59	0.005706	0.000020	0.239938	0.010667	0.000058	0.234574
Alcohol use disorders	60-64	0.004311	0.000020	0.254388	0.009040	0.000064	0.239558
Alcohol use disorders	65-69	0.003242	0.000020	0.262769	0.007611	0.000072	0.248130
Alcohol use disorders	70-74	0.002621	0.000019	0.261533	0.006335	0.000079	0.256354
Alcohol use disorders	75-79	0.002370	0.000020	0.258331	0.005395	0.000084	0.264566
Alcohol use disorders	80-84	0.002414	0.000023	0.254654	0.004813	0.000090	0.272536
Alcohol use disorders	85-89	0.003107	0.000028	0.251424	0.004709	0.000092	0.280264
Alcohol use disorders	90-94	0.004547	0.000034	0.250771	0.005103	0.000089	0.289218
Alcohol use disorders	95+	0.006738	0.000041	0.251279	0.005994	0.000082	0.298957
Interpersonal violence	0-4	0.003040	0.000008	0.016635	0.002707	0.000011	0.013075
Interpersonal violence	5-9	0.003829	0.000003	0.036871	0.006935	0.000004	0.017253
Interpersonal violence	10-14	0.005449	0.000002	0.052490	0.014009	0.000004	0.020195
Interpersonal violence	15-19	0.008227	0.000006	0.062702	0.025303	0.000013	0.020642
Interpersonal violence	20-24	0.009617	0.000010	0.065547	0.030632	0.000022	0.026328
Interpersonal violence	25-29	0.009242	0.000012	0.069746	0.027857	0.000028	0.041320
Interpersonal violence	30-34	0.007539	0.000013	0.084505	0.019973	0.000029	0.065745
Interpersonal violence	35-39	0.005617	0.000012	0.119825	0.013474	0.000029	0.097777
Interpersonal violence	40-44	0.003992	0.000011	0.178876	0.010001	0.000027	0.139869
Interpersonal violence	45-49	0.002766	0.000010	0.263357	0.007624	0.000024	0.204360
Interpersonal violence	50-54	0.001938	0.000009	0.371729	0.005532	0.000021	0.303156
Interpersonal violence	55-59	0.001418	0.000007	0.494414	0.003876	0.000018	0.436767
Interpersonal violence	60-64	0.001119	0.000007	0.609881	0.002811	0.000015	0.582167
Interpersonal violence	65-69	0.000977	0.000007	0.690053	0.002247	0.000014	0.707298
Interpersonal violence	70-74	0.000946	0.000007	0.707591	0.001956	0.000013	0.789463
Interpersonal violence	75-79	0.001038	0.000008	0.648526	0.001785	0.000012	0.807922
Interpersonal violence	80-84	0.001251	0.000007	0.534774	0.001800	0.000010	0.736337
Interpersonal violence	85-89	0.001463	0.000007	0.432937	0.002389	0.000010	0.600539
Interpersonal violence	90-94	0.001655	0.000007	0.345144	0.003585	0.000017	0.420097
Interpersonal violence	95+	0.001826	0.000009	0.272527	0.005393	0.000029	0.192357
Lower respiratory infections	0-4	0.028481	0.000029	0.001601	0.040632	0.000035	0.001629
Lower respiratory infections	5-9	0.015942	0.000007	0.001483	0.020342	0.000008	0.001496
Lower respiratory infections	10-14	0.008151	-	0.001416	0.008358	-	0.001421
Lower respiratory infections	15-19	0.006355	0.000002	0.001386	0.006256	0.000001	0.001389
Lower respiratory infections	20-24	0.007206	0.000002	0.001357	0.007022	0.000002	0.001361
Lower respiratory infections	25-29	0.008455	0.000003	0.001345	0.008313	0.000004	0.001346
Lower respiratory infections	30-34	0.009733	0.000005	0.001336	0.009762	0.000006	0.001338
Lower respiratory infections	35-39	0.011184	0.000006	0.001324	0.011708	0.000010	0.001328

Lower respiratory infections	40-44	0.012926	0.000009	0.001311	0.014549	0.000015	0.001317
Lower respiratory infections	45-49	0.014804	0.000012	0.001305	0.018091	0.000021	0.001315
Lower respiratory infections	50-54	0.016850	0.000018	0.001305	0.022124	0.000028	0.001305
Lower respiratory infections	55-59	0.020148	0.000025	0.001292	0.027807	0.000040	0.001277
Lower respiratory infections	60-64	0.025851	0.000035	0.001255	0.036621	0.000061	0.001237
Lower respiratory infections	65-69	0.032007	0.000047	0.001210	0.046239	0.000092	0.001196
Lower respiratory infections	70-74	0.039351	0.000081	0.001162	0.057433	0.000168	0.001158
Lower respiratory infections	75-79	0.058788	0.000254	0.001114	0.083312	0.000406	0.001116
Lower respiratory infections	80-84	0.101460	0.000689	0.001082	0.137365	0.001027	0.001088
Lower respiratory infections	85-89	0.163112	0.003301	0.001074	0.214394	0.003891	0.001086
Lower respiratory infections	90-94	0.238852	0.008519	0.001086	0.308459	0.009350	0.001105
Lower respiratory infections	95+	0.328636	0.016290	0.001119	0.419505	0.017365	0.001144
Self-harm	0-4	-	-	-	-	-	-
Self-harm	5-9	0.000433	-	0.002152	0.000142	-	0.003454
Self-harm	10-14	0.001128	0.000010	0.011533	0.000610	0.000007	0.011702
Self-harm	15-19	0.002169	0.000042	0.027385	0.001449	0.000134	0.024344
Self-harm	20-24	0.002429	0.000061	0.056644	0.001904	0.000217	0.047484
Self-harm	25-29	0.002146	0.000065	0.094142	0.001918	0.000257	0.078000
Self-harm	30-34	0.001685	0.000068	0.133550	0.001611	0.000255	0.117174
Self-harm	35-39	0.001492	0.000074	0.167519	0.001373	0.000260	0.160228
Self-harm	40-44	0.001410	0.000077	0.202768	0.001198	0.000256	0.216880
Self-harm	45-49	0.001222	0.000081	0.254959	0.000958	0.000253	0.300753
Self-harm	50-54	0.000948	0.000081	0.381098	0.000728	0.000239	0.428536
Self-harm	55-59	0.000648	0.000072	0.639303	0.000522	0.000221	0.648072
Self-harm	60-64	0.000400	0.000056	1.038831	0.000348	0.000192	1.007551
Self-harm	65-69	0.000254	0.000051	1.443487	0.000232	0.000173	1.398636
Self-harm	70-74	0.000220	0.000054	1.587322	0.000192	0.000177	1.541457
Self-harm	75-79	0.000253	0.000059	1.419436	0.000245	0.000202	1.312930
Self-harm	80-84	0.000289	0.000061	1.136990	0.000337	0.000259	0.894287
Self-harm	85-89	0.000281	0.000061	1.061302	0.000361	0.000325	0.730336
Self-harm	90-94	0.000238	0.000057	1.164753	0.000319	0.000355	0.805482
Self-harm	95+	0.000160	0.000050	1.451724	0.000209	0.000355	1.125497
Transport injuries	0-4	0.001839	0.000010	0.013794	0.001718	0.000012	0.013999
Transport injuries	5-9	0.004499	0.000015	0.018370	0.004796	0.000021	0.018312
Transport injuries	10-14	0.006726	0.000024	0.026396	0.007608	0.000050	0.025782
Transport injuries	15-19	0.008698	0.000040	0.036922	0.010402	0.000107	0.035447
Transport injuries	20-24	0.008885	0.000045	0.057773	0.010992	0.000146	0.055615
Transport injuries	25-29	0.007850	0.000040	0.089749	0.009880	0.000146	0.087550
Transport injuries	30-34	0.006477	0.000030	0.128972	0.008317	0.000123	0.123252
Transport injuries	35-39	0.005679	0.000026	0.168216	0.007627	0.000109	0.154768
Transport injuries	40-44	0.005326	0.000026	0.207603	0.007379	0.000106	0.190243
Transport injuries	45-49	0.004976	0.000028	0.256371	0.006818	0.000105	0.244268
Transport injuries	50-54	0.004477	0.000031	0.324996	0.005834	0.000100	0.325426
Transport injuries	55-59	0.003876	0.000034	0.418603	0.004796	0.000096	0.429874
Transport injuries	60-64	0.003306	0.000038	0.532923	0.004015	0.000099	0.550971
Transport injuries	65-69	0.002934	0.000046	0.634583	0.003427	0.000110	0.679174
Transport injuries	70-74	0.002869	0.000061	0.684079	0.003063	0.000134	0.772541
Transport injuries	75-79	0.003033	0.000091	0.680424	0.003073	0.000182	0.781148
Transport injuries	80-84	0.003219	0.000124	0.653164	0.003489	0.000256	0.701590
Transport injuries	85-89	0.003256	0.000146	0.639013	0.004155	0.000326	0.606689
Transport injuries	90-94	0.003200	0.000163	0.629363	0.005043	0.000388	0.506270
Transport injuries	95+	0.003049	0.000173	0.624384	0.006148	0.000440	0.401822
Unintentional injuries	0-4	0.293610	0.000037	0.006841	0.280398	0.000043	0.007234
Unintentional injuries	5-9	0.313929	0.000015	0.012083	0.419744	0.000020	0.009950
Unintentional injuries	10-14	0.292908	0.000004	0.019419	0.482889	0.000015	0.014427
Unintentional injuries	15-19	0.222639	0.000007	0.029082	0.462979	0.000030	0.020499
Unintentional injuries	20-24	0.191426	0.000009	0.038728	0.419989	0.000046	0.028722
Unintentional injuries	25-29	0.177634	0.000010	0.049257	0.363228	0.000053	0.040278

Unintentional injuries	30-34	0.163694	0.000011	0.062442	0.302600	0.000054	0.055382
Unintentional injuries	35-39	0.144086	0.000013	0.080450	0.249828	0.000053	0.074340
Unintentional injuries	40-44	0.123369	0.000016	0.102931	0.208732	0.000057	0.097192
Unintentional injuries	45-49	0.106951	0.000020	0.127124	0.177223	0.000065	0.122749
Unintentional injuries	50-54	0.097349	0.000026	0.149700	0.155949	0.000079	0.148157
Unintentional injuries	55-59	0.093551	0.000033	0.167943	0.143211	0.000095	0.171605
Unintentional injuries	60-64	0.095225	0.000042	0.177657	0.138071	0.000117	0.188233
Unintentional injuries	65-69	0.107937	0.000064	0.174267	0.143510	0.000152	0.192524
Unintentional injuries	70-74	0.147111	0.000153	0.157940	0.168328	0.000258	0.182614
Unintentional injuries	75-79	0.223998	0.000452	0.137930	0.223952	0.000642	0.162985
Unintentional injuries	80-84	0.339298	0.001216	0.125251	0.312783	0.001590	0.144979
Unintentional injuries	85-89	0.488592	0.003179	0.120320	0.424667	0.003852	0.135173
Unintentional injuries	90-94	0.671524	0.006402	0.119892	0.557304	0.007496	0.131049
Unintentional injuries	95+	0.887921	0.010881	0.123982	0.710520	0.012511	0.132820

For acute alcohol-related causes, incidence, (years lived with disability (YLD) and mortality rates are from the Global Burden of Disease data.<sup>3</sup>

## Costs for alcohol-related diseases and injuries

Table S4: Annual cost per prevalent or incident case of alcohol-related diseases and injuries

Disease	Unit costed	Sex	Unit Cost in AUD		
			0 to 34 years	35 to 64 years	65+ years
Alcoholic cardiomyopathy	Prevalent case	female	6,237	4,540	2,190
Alcoholic cardiomyopathy	Prevalent case	male	6,800	4,849	2,703
Alcohol use disorders	Incident case	female	1,267	3,135	2,634
Alcohol use disorders	Incident case	male	1,028	2,843	3,306
Atrial fibrillation and flutter	Prevalent case	female	58,429	2,019	2,148
Atrial fibrillation and flutter	Prevalent case	male	50,753	2,480	2,645
Breast cancer	Incident case	female	89,110	96,154	64,665
Cirrhosis	Prevalent case	female	31	65	62
Cirrhosis	Prevalent case	male	19	56	61
Colon and rectum cancer	Incident case	female	67,871	57,662	50,905
Colon and rectum cancer	Incident case	male	66,273	62,028	52,405
Diabetes mellitus type 2	Prevalent case	female	1,193	1,052	1,111
Diabetes mellitus type 2	Prevalent case	male	972	1,280	1,459
Epilepsy	Prevalent case	female	3,675	4,414	2,655
Epilepsy	Prevalent case	male	3,901	5,892	3,540
Hypertensive heart disease	Prevalent case	female	10,206	5,113	1,132
Hypertensive heart disease	Prevalent case	male	4,758	2,600	1,420
Interpersonal violence	Incident case	female	1,956	5,893	2,720
Interpersonal violence	Incident case	male	1,141	3,135	2,914
Intracerebral haemorrhage	Prevalent case	female	1,216	1,955	2,996
Intracerebral haemorrhage	Prevalent case	male	2,393	3,223	5,099
Ischaemic heart disease	Prevalent case	female	1,417	2,434	1,969
Ischaemic heart disease	Prevalent case	male	1,041	2,123	1,832
Ischaemic stroke	Prevalent case	female	1,216	1,955	2,996
Ischaemic stroke	Prevalent case	male	2,393	3,223	5,099
Larynx and pharynx cancer	Incident case	female	46,692	43,210	30,063
Larynx and pharynx cancer	Incident case	male	61,199	42,924	37,603
Lip and oral cavity cancer	Incident case	female	33,861	80,096	56,344
Lip and oral cavity cancer	Incident case	male	39,837	55,421	47,585
Liver cancer	Incident case	female	104,565	70,109	43,928
Liver cancer	Incident case	male	127,378	67,322	68,287
Lower respiratory infections	Incident case	female	3,270	2,726	2,475
Lower respiratory infections	Incident case	male	3,177	2,186	2,439
Oesophageal cancer	Incident case	female	29,678	76,018	49,633
Oesophageal cancer	Incident case	male	16,251	49,465	50,102
Pancreatitis	Prevalent case	female	24,963	20,744	14,792
Pancreatitis	Prevalent case	male	36,366	28,155	17,509
Self-harm	Incident case	female	10,567	10,081	17,609
Self-harm	Incident case	male	7,785	11,069	21,763
Transport injuries	Incident case	female	5,023	8,202	11,914
Transport injuries	Incident case	male	7,757	10,796	15,166
Unintentional injuries	Incident case	female	684	2,197	3,771
Unintentional injuries	Incident case	male	648	1,638	3,645

Cost data from Australian Institute of Health and Welfare health expenditure data.<sup>6,7</sup> An average of the AIHW 2018/19 and the 2019/20 reported costs was used. The cost per case reported in this table is for the 'all areas' category in the AIHW report. The 'all areas' category reflects total costs for on health care costs for private hospital services, public hospital admitted patients, public hospital emergency department, public hospital outpatients, general practitioner services, specialist services, medical imaging, pathology, allied health and other services, and the pharmaceutical benefits scheme.

Table S5: Average annual cost of all other diseases in the population\*

5-year age groups	Cost per person in AUD	
	Female	Male
<b>Under 5 years</b>	3,241	3,867
<b>5-9 years</b>	1,201	1,480
<b>10-14 years</b>	1,384	1,471
<b>15-19 years</b>	2,510	1,839
<b>20-24 years</b>	3,267	1,962
<b>25-29 years</b>	4,232	2,061
<b>30-34 years</b>	5,240	2,294
<b>35-39 years</b>	4,866	2,707
<b>40-44 years</b>	4,321	3,192
<b>45-49 years</b>	4,417	3,854
<b>50-54 years</b>	4,973	4,770
<b>55-59 years</b>	5,684	5,984
<b>60-64 years</b>	6,792	7,829
<b>65-69 years</b>	8,414	10,043
<b>70-74 years</b>	10,498	12,764
<b>75-79 years</b>	12,912	15,890
<b>80-84 years</b>	15,020	18,553
<b>85 years and over</b>	16,556	20,896

Cost data from Australian Institute of Health and Welfare health expenditure data.<sup>6,7</sup>

\* These are costs calculated for all other diseases not modelled. The costs are incurred in added years of life since a reduction of alcohol consumption prolongs life (See section in main manuscript titled *Development of the model structure and input data sources*)

## Relative risks

Table S6: Relative risk measures of disease and injury due to alcohol intake

Cause	Sex	g/day*	Mean	SD	Cause	Sex	g/day	Mean	SD
Atrial fibrillation and flutter	both	72	1.535	0.0969	Ischemic stroke	male	72	1.451	0.1179
Atrial fibrillation and flutter	both	60	1.411	0.0788	Ischemic stroke	male	60	1.312	0.0776
Atrial fibrillation and flutter	both	48	1.312	0.0482	Ischemic stroke	male	48	1.159	0.0952
Atrial fibrillation and flutter	both	36	1.214	0.0370	Ischemic stroke	male	36	1.057	0.0666
Atrial fibrillation and flutter	both	24	1.131	0.0349	Ischemic stroke	male	24	0.97	0.0577
Atrial fibrillation and flutter	both	12	1.066	0.0173	Ischemic stroke	male	12	0.938	0.0571
Atrial fibrillation and flutter	both	0	1	0	Ischemic stroke	male	0	1	0
Breast cancer	both	72	1.476	0.1043	Ischemic stroke	female	72	1.43	0.1592
Breast cancer	both	60	1.452	0.0732	Ischemic stroke	female	60	1.3	0.0957
Breast cancer	both	48	1.443	0.0495	Ischemic stroke	female	48	1.145	0.1054
Breast cancer	both	36	1.433	0.0612	Ischemic stroke	female	36	0.985	0.0804
Breast cancer	both	24	1.329	0.0464	Ischemic stroke	female	24	0.85	0.0661
Breast cancer	both	12	1.17	0.0469	Ischemic stroke	female	12	0.824	0.0564
Breast cancer	both	0	1	0	Ischemic stroke	female	0	1	0
Cirrhosis and other chronic liver diseases due to alcohol use	both	72	9.427	1.9574	Larynx cancer	both	72	2.461	0.3750
Cirrhosis and other chronic liver diseases due to alcohol use	both	60	6.274	1.3676	Larynx cancer	both	60	2.144	0.3763
Cirrhosis and other chronic liver diseases due to alcohol use	both	48	4.673	0.8844	Larynx cancer	both	48	1.813	0.2860
Cirrhosis and other chronic liver diseases due to alcohol use	both	36	3.274	0.5551	Larynx cancer	both	36	1.531	0.2385
Cirrhosis and other chronic liver diseases due to alcohol use	both	24	2.055	0.2977	Larynx cancer	both	24	1.304	0.1666
Cirrhosis and other chronic liver diseases due to alcohol use	both	12	1.243	0.1704	Larynx cancer	both	12	1.12	0.1232
Cirrhosis and other chronic liver diseases due to alcohol use	both	0	1	0	Larynx cancer	both	0	1	0
Colon and rectum cancer	both	72	1.616	0.1227	Lip and oral cavity cancer	both	72	4.858	0.5959
Colon and rectum cancer	both	60	1.468	0.0730	Lip and oral cavity cancer	both	60	3.766	0.5258
Colon and rectum cancer	both	48	1.323	0.0880	Lip and oral cavity cancer	both	48	2.991	0.4115



Colon and rectum cancer	both	36	1.237	0.0480	Lip and oral cavity cancer	both	36	2.311	0.2990
Colon and rectum cancer	both	24	1.156	0.0462	Lip and oral cavity cancer	both	24	1.738	0.1985
Colon and rectum cancer	both	12	1.078	0.0230	Lip and oral cavity cancer	both	12	1.293	0.1212
Colon and rectum cancer	both	0	1	0	Lip and oral cavity cancer	both	0	1	0
Diabetes mellitus	male	72	1.198	0.0694	Liver cancer due to alcohol use	both	72	1.424	0.1957
Diabetes mellitus	male	60	1.165	0.0878	Liver cancer due to alcohol use	both	60	1.372	0.1528
Diabetes mellitus	male	48	1.084	0.0781	Liver cancer due to alcohol use	both	48	1.31	0.1538
Diabetes mellitus	male	36	1	0.0582	Liver cancer due to alcohol use	both	36	1.225	0.1138
Diabetes mellitus	male	24	0.932	0.0482	Liver cancer due to alcohol use	both	24	1.14	0.1084
Diabetes mellitus	male	12	0.921	0.0464	Liver cancer due to alcohol use	both	12	1.067	0.0691
Diabetes mellitus	male	0	1	0	Liver cancer due to alcohol use	both	0	1	0
Diabetes mellitus	female	72	1.172	0.2148	Lower respiratory infections	both	72	1.357	0.1365
Diabetes mellitus	female	60	1.074	0.1730	Lower respiratory infections	both	60	1.226	0.0987
Diabetes mellitus	female	48	0.945	0.1112	Lower respiratory infections	both	48	1.127	0.0997
Diabetes mellitus	female	36	0.836	0.0712	Lower respiratory infections	both	36	1.064	0.0742
Diabetes mellitus	female	24	0.76	0.0541	Lower respiratory infections	both	24	1.026	0.0679
Diabetes mellitus	female	12	0.733	0.0429	Lower respiratory infections	both	12	1.013	0.0339
Diabetes mellitus	female	0	1	0	Lower respiratory infections	both	0	1	0
Epilepsy	both	72	2.480	0.3099	Nasopharynx cancer	both	72	4.545	0.2250
Epilepsy	both	60	2.186	0.2145	Nasopharynx cancer	both	60	3.803	0.1513
Epilepsy	both	48	1.872	0.2375	Nasopharynx cancer	both	48	3.062	0.0982
Epilepsy	both	36	1.585	0.1518	Nasopharynx cancer	both	36	2.385	0.0770
Epilepsy	both	24	1.353	0.1314	Nasopharynx cancer	both	24	1.839	0.0349
Epilepsy	both	12	1.177	0.0656	Nasopharynx cancer	both	12	1.371	0.0145
Epilepsy	both	0	1	0	Nasopharynx cancer	both	0	1	0
Hypertensive heart disease	both	72	1.860	0.2329	Oesophageal cancer	both	72	2.669	0.3250
Hypertensive heart disease	both	60	1.705	0.2240	Oesophageal cancer	both	60	2.452	0.3033
Hypertensive heart disease	both	48	1.614	0.2038	Oesophageal cancer	both	48	2.202	0.2482
Hypertensive heart disease	both	36	1.479	0.1344	Oesophageal cancer	both	36	1.815	0.1923
Hypertensive heart disease	both	24	1.315	0.0995	Oesophageal cancer	both	24	1.466	0.1416
Hypertensive heart disease	both	12	1.046	0.0727	Oesophageal cancer	both	12	1.212	0.1041
Hypertensive heart disease	both	0	1	0	Oesophageal cancer	both	0	1	0
Interpersonal violence	both	72	1.516	0.1561	Other pharynx cancer	both	72	4.764	0.8319
Interpersonal violence	both	60	1.452	0.1286	Other pharynx cancer	both	60	3.972	0.6482
Interpersonal violence	both	48	1.396	0.1584	Other pharynx cancer	both	48	3.199	0.5625
Interpersonal violence	both	36	1.345	0.1135	Other pharynx cancer	both	36	2.519	0.3714
Interpersonal violence	both	24	1.256	0.1033	Other pharynx cancer	both	24	1.943	0.2594

Interpersonal violence	both	12	1.129	0.0903	Other pharynx cancer	both	12	1.472	0.1296
Interpersonal violence	both	0	1	0	Other pharynx cancer	both	0	1	0
Intracerebral haemorrhage	male	72	1.971	0.1666	Pancreatitis	both	72	3.298	0.5064
Intracerebral haemorrhage	male	60	1.705	0.1380	Pancreatitis	both	60	2.217	0.5036
Intracerebral haemorrhage	male	48	1.458	0.1495	Pancreatitis	both	48	1.717	0.3260
Intracerebral haemorrhage	male	36	1.31	0.1107	Pancreatitis	both	36	1.471	0.2446
Intracerebral haemorrhage	male	24	1.162	0.1051	Pancreatitis	both	24	1.228	0.2031
Intracerebral haemorrhage	male	12	1.068	0.0686	Pancreatitis	both	12	1.073	0.1760
Intracerebral haemorrhage	male	0	1	0	Pancreatitis	both	0	1	0
Intracerebral haemorrhage	female	72	2.276	0.3145	Self-harm	both	72	1.927	0.3232
Intracerebral haemorrhage	female	60	1.964	0.2367	Self-harm	both	60	1.734	0.2597
Intracerebral haemorrhage	female	48	1.614	0.2048	Self-harm	both	48	1.545	0.2337
Intracerebral haemorrhage	female	36	1.337	0.1528	Self-harm	both	36	1.376	0.1788
Intracerebral haemorrhage	female	24	1.11	0.1232	Self-harm	both	24	1.23	0.1431
Intracerebral haemorrhage	female	12	1.031	0.0722	Self-harm	both	12	1.107	0.1110
Intracerebral haemorrhage	female	0	1	0	Self-harm	both	0	1	0
Ischemic heart disease	male	72	1.091	0.0862	Transport injuries	both	72	1.552	0.2120
Ischemic heart disease	male	60	0.993	0.0566	Transport injuries	both	60	1.456	0.1612
Ischemic heart disease	male	48	0.906	0.0607	Transport injuries	both	48	1.366	0.1508
Ischemic heart disease	male	36	0.871	0.0449	Transport injuries	both	36	1.288	0.1135
Ischemic heart disease	male	24	0.857	0.0418	Transport injuries	both	24	1.22	0.0862
Ischemic heart disease	male	12	0.865	0.0403	Transport injuries	both	12	1.163	0.0829
Ischemic heart disease	male	0	1	0	Transport injuries	both	0	1	0
Ischemic heart disease	female	72	1.107	0.1140	Unintentional injuries	both	72	1.266	0.1255
Ischemic heart disease	female	60	1.012	0.0778	Unintentional injuries	both	60	1.221	0.1023
Ischemic heart disease	female	48	0.932	0.0834	Unintentional injuries	both	48	1.182	0.1031
Ischemic heart disease	female	36	0.882	0.0551	Unintentional injuries	both	36	1.168	0.0747
Ischemic heart disease	female	24	0.846	0.0508	Unintentional injuries	both	24	1.154	0.0696
Ischemic heart disease	female	12	0.823	0.0492	Unintentional injuries	both	12	1.09	0.0436
Ischemic heart disease	female	0	1	0	Unintentional injuries	both	0	1	0

Relative risk measures do not include alcohol use disorders, which is entirely attributable to alcohol use, so we adjust the rates in proportion to the change in alcohol. In the absence of data, we assume the 'curve' flattens off after the indicated g/day limit e.g. for Atrial fibrillation and flutter, above 72g/d, we use the RR for 72 g/d. g/day: grams per day, SD: standard deviation

## A schematic description of The Alcohol Policy (TAP) Model

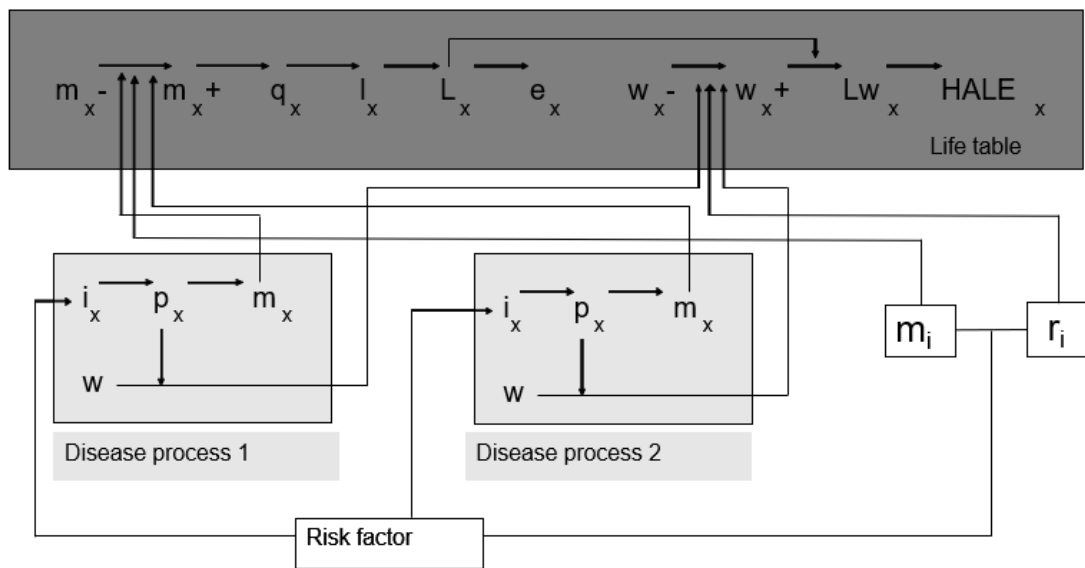


Figure S2: Schematic description of the proportional multistate lifetable including the interaction with the disease models and the risk factor.<sup>8</sup>

All of the factors are age-specific, with the  $x$  in subscript denoting age. The areas highlighted in yellow are the disease models while the grey is the lifetable.  $i$  is incidence,  $p$  is prevalence,  $m$  is mortality rate,  $w$  is disability weight (proportion of quality of life considered to be lost due to disease or disability),  $q$  is mortality probability,  $l$  is number of survivors,  $L$  is life years,  $e$  is life expectancy,  $Lw_x$  is number of disability adjusted life years lived in age interval  $x$ ,  $HALE_x$  = health-adjusted life expectancy. '-' denotes parameter related to diseases or causes that specifically excludes modelled diseases or injuries and '+' relates to all modelled diseases in the model. A change in the risk factor exposure (alcohol use) translates into changes in incidence ( $i_x$ ), which changes disease-specific prevalence ( $p_x$ ) and mortality ( $m_x$ ). For presentation purposes, only two diseases processes are shown. A change in the risk factor exposure (alcohol use) impacts modelled injuries: fatalities ( $m_i$ ) impact directly on mortality and non-fatal injuries ( $r_i$ ) impact on years lived with disability.

## Additional results from main analysis

### Changes in incident cases of disease and injuries

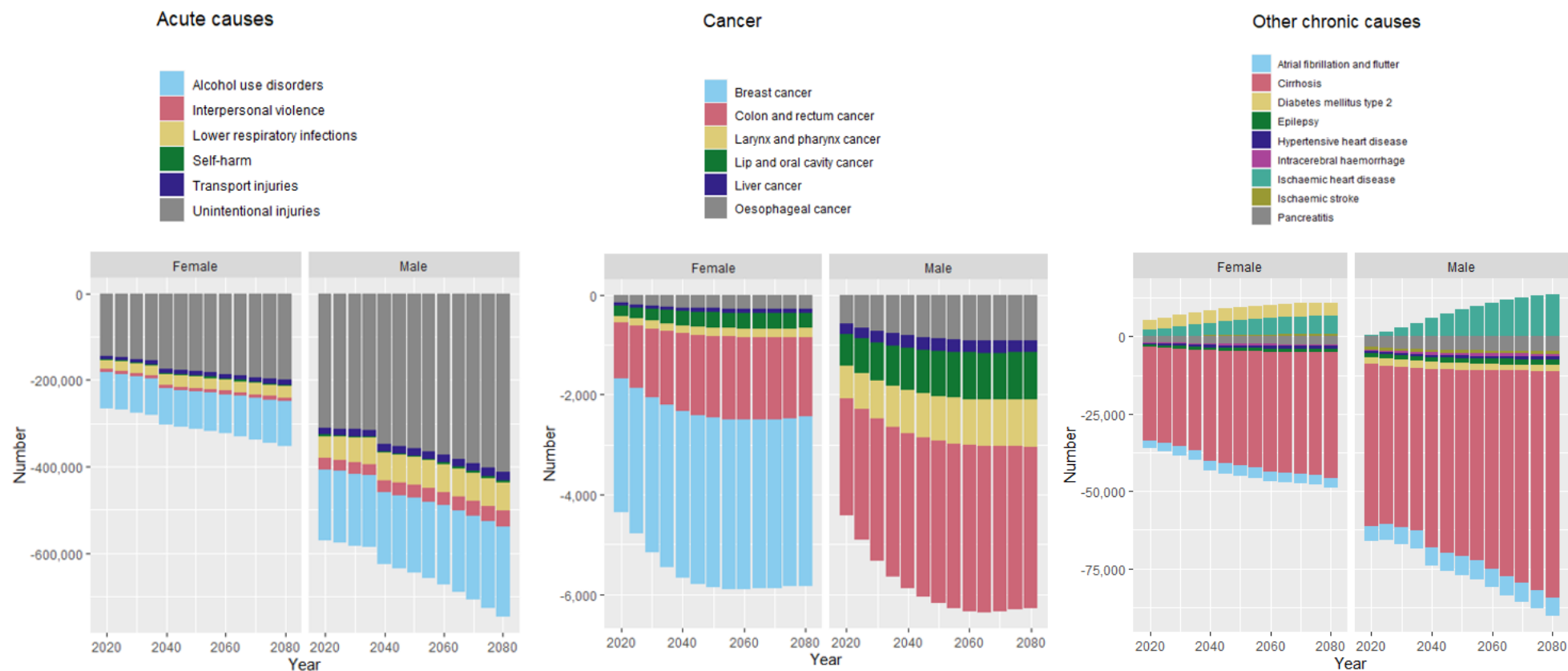


Figure S3: Changes in incident cases if alcohol consumption was eliminated in the Australian population (main analysis)

Negative values can be explained by the questionable alcohol protective effect in the relative risk measures and second, disease & injury cases that arise in added years of life (people live longer due to reduced alcohol harm and they are still at risk of these diseases and injuries).

## Changes in mortality

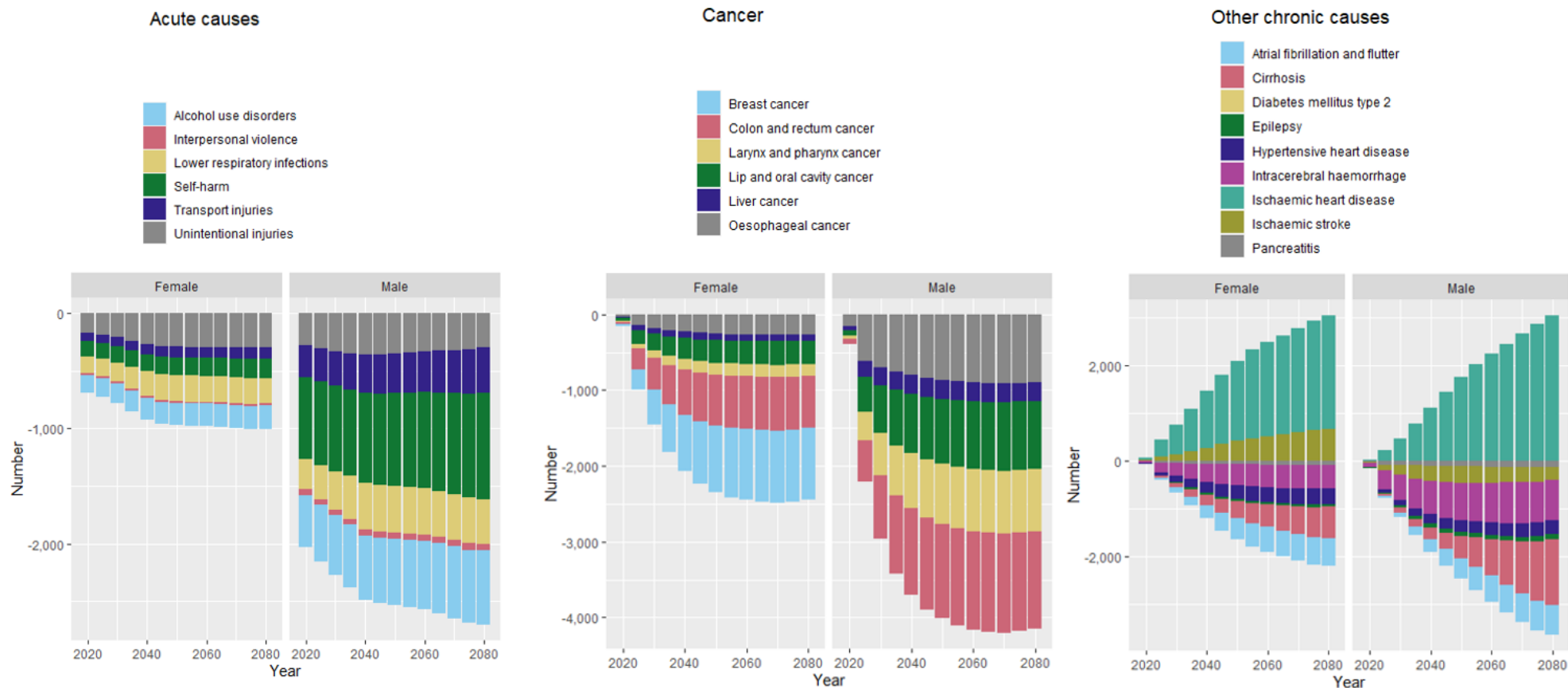


Figure S4: Changes in mortality over time if alcohol consumption was eliminated in the Australian population (main analysis)

Negative values can be explained by the questionable alcohol protective effect and cases that arise when people live longer due to reduced alcohol harm and they are still at risk of mortality from these diseases and injuries. The majority of diabetes-related deaths are from ischemic heart disease and ischemic stroke. Therefore, we ignore diabetes mellitus type 2 mortality in the model, assuming it was covered by ischaemic heart disease and ischaemic stroke.

## Additional results from sensitivity analysis

### Changes in incidence and mortality

Table S7: Changes in incidence and mortality over the first 25 years when the protective effects of low and moderate alcohol consumption are excluded

Incident cases that could be prevented			
	Female (Mean, 95%UIs)	Male (Mean, 95%UIs)	Total (Mean, 95%UIs)
<b>Sensitivity analysis (with protective effects of low, moderate alcohol consumption on ischemic heart disease, diabetes mellitus type 2 and Ischemic stroke excluded)<sup>a</sup></b>			
Diabetes mellitus type 2	29,764 (-2,946 to 111,513)	86,190 (-7,899 to 220,580)	115,954 (-1,614 to 268,541)
Ischaemic heart disease	23,150 (-14,390 to 89,480)	161,784 (-69,543 to 478,130)	184,934 (-51,351 to 498,010)
Ischaemic stroke	16,308 (-1,482 to 39,972)	29,097 (5,800 to 57,472)	45,405 (15,673 to 82,159)
<b>Main analysis (with protective effects of low, moderate alcohol consumption on ischemic heart disease, diabetes mellitus type 2 and Ischemic stroke included)<sup>b</sup></b>			
Diabetes mellitus type 2	-96,470 (-266,530 to 78,705)	59,579 (-115,782 to 225,786)	-36,891 (-279,513 to 208,483)
Ischaemic heart disease	-86,736 (-242,660 to 70,846)	-99,370 (-650,104 to 425,468)	-186,106 (-744,135 to 350,779)
Ischaemic stroke	-7,816 (-56,953 to 39,445)	24,497 (-12,518 to 59,309)	16,680 (-44,829 to 74,104)
Deaths that could be averted			
	Female (Mean, 95%UIs)	Male (Mean, 95%UIs)	Total (Mean, 95%UIs)
<b>Sensitivity analysis (with protective effects of low, moderate alcohol consumption on ischemic heart disease, diabetes mellitus type 2 and Ischemic stroke excluded)<sup>a</sup></b>			
Diabetes mellitus type 2	0 (0 to 0)	0 (0 to 0)	0 (0 to 0)
Ischaemic heart disease	-705 (-7,513 to 11,291)	-482 (-15,012 to 20,502)	-1,186 (-18,544 to 21,498)
Ischaemic stroke	3,187 (-2,629 to 11,070)	7,190 (-821 to 17,276)	10,378 (410 to 23,144)
<b>Main analysis (with protective effects of low, moderate alcohol consumption on ischemic heart disease, diabetes mellitus type 2 and Ischemic stroke included)<sup>b</sup></b>			
Diabetes mellitus type 2 <sup>#</sup>	0 (0 to 0)	0 (0 to 0)	0 (0 to 0)
Ischaemic heart disease	-19,731 (-47,157 to 8,808)	-16,888 (-50,986 to 16,649)	-36,619 (-80,506 to 5,453)
Ischaemic stroke	-4,308 (-19,955 to 11,248)	5,841 (-7,024 to 18,258)	1,534 (-19,130 to 21,171)

<sup>a</sup>Sensitivity analysis: Alcohol consumption eliminated in the Australian population with protective effects of low, moderate alcohol consumption on ischemic heart disease, diabetes mellitus type 2 and Ischemic stroke excluded.

<sup>b</sup>Main analysis: Alcohol consumption eliminated in the Australian population with protective effects of low, moderate alcohol consumption on ischemic heart disease, diabetes mellitus type 2 and Ischemic stroke included.

<sup>#</sup>The majority of diabetes-related deaths are from ischemic heart disease and ischemic stroke. Therefore, we ignore diabetes mellitus type 2 mortality in the model, assuming it was covered by ischaemic heart disease and ischaemic stroke.

Negative values can be explained by the questionable alcohol protective effect and cases that arise when people live longer due to reduced alcohol harm

## Changes in Health adjusted life years (HALYs)

Table S8: Sex specific HALYs gained for various scenarios modelled

Scenario	Age group (years)	HALYs in Millions, mean (95%UIs)		
		Female	Male	Total
Avoidable burden (base case)	0-25	1.5 (1 to 2.1)	3.5 (2.5 to 4.5)	5.1 (4 to 6.2)
	0-60	5 (3.2 to 6.7)	12 (9.1 to 15)	17 (14 to 21)
Avoidable burden with protective effects excluded	0-25	1.8 (1.4 to 2.3)	3.7 (2.8 to 4.6)	5.5 (4.6 to 6.5)
	0-60	6.3 (5 to 7.7)	13 (10 to 15)	19 (16 to 22)
Met alcohol consumption guidelines	0-25	1.2 (0.7 to 1.8)	3.2 (2.2 to 4.1)	4.4 (3.2 to 5.5)
	0-60	4.2 (2.4 to 5.9)	11 (8.1 to 14)	15 (12 to 19)

Scenarios modelled: Avoidable burden: Population level elimination of alcohol consumption (Base case); Avoidable burden with protective effects excluded: Population level elimination of alcohol consumption with protective effects excluded (assessing sensitivity to excluding the beneficial/protective effects of low and moderate alcohol consumption on ischemic heart disease, diabetes mellitus type 2 and Ischemic stroke)<sup>9</sup>; Met guidelines: Population met the current alcohol consumption guidelines (no more than 10 standard drinks a week).<sup>10</sup>

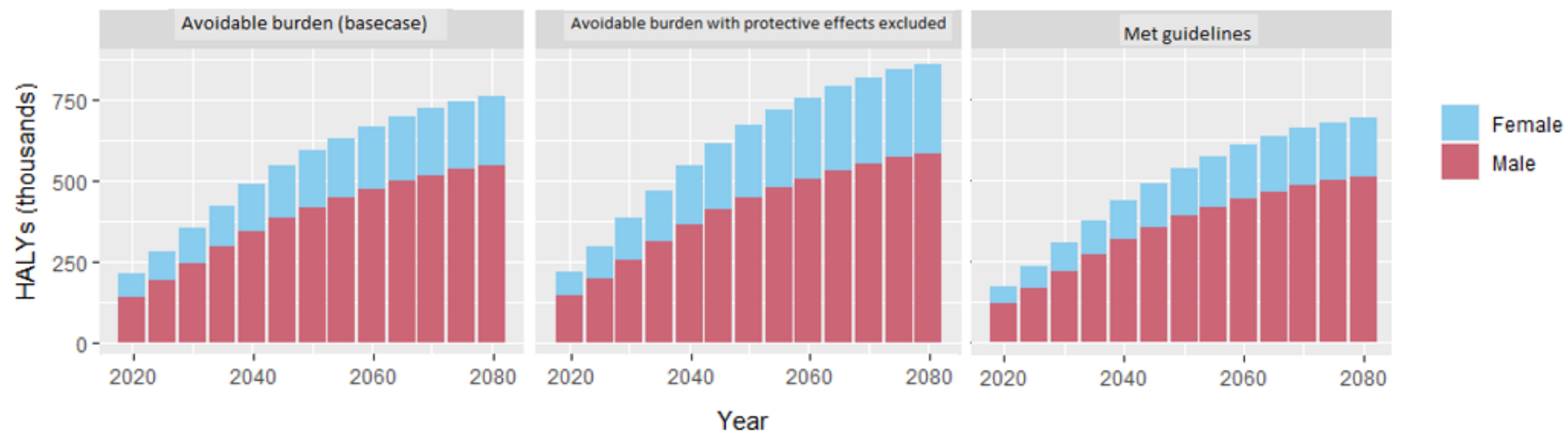


Figure S5: HALYs gained over different time periods for various modelled scenarios

Scenarios modelled: Avoidable burden: Population level elimination of alcohol consumption (Base case); Avoidable burden with protective effects excluded: Population level elimination of alcohol consumption with protective effects excluded (assessing sensitivity to excluding the beneficial/protective effects of low and moderate alcohol consumption on ischemic heart disease, diabetes mellitus type 2 and Ischemic stroke)<sup>9</sup>; Met guidelines: Population met the current alcohol consumption guidelines (no more than 10 standard drinks a week).<sup>10</sup>



## Changes in healthcare costs by area of expenditure

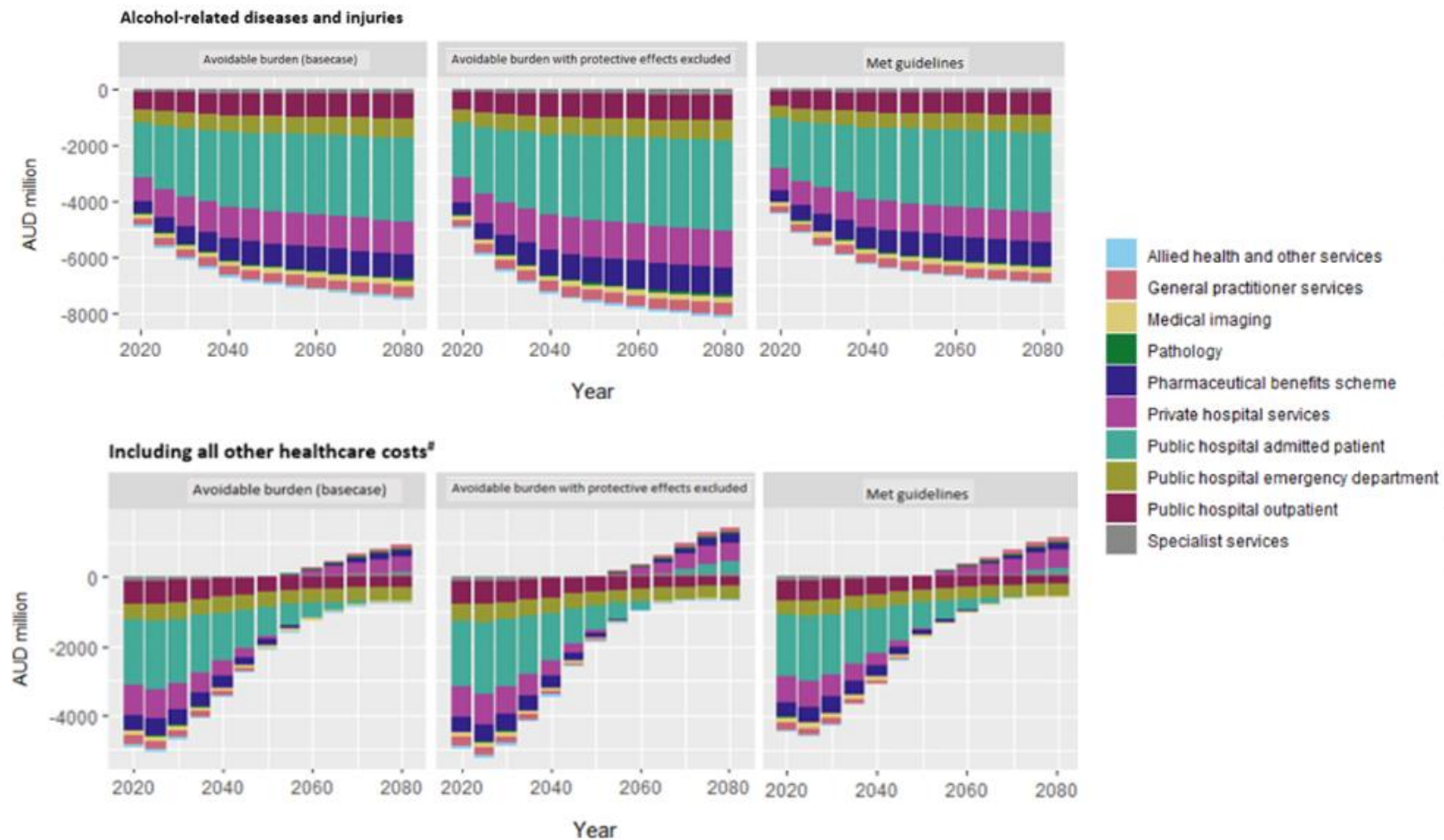


Figure S6: changes in healthcare costs over different time periods for four modelled scenarios

The estimated changes are presented per the areas of expenditure defined by the Australian Institute of Health and Welfare.<sup>6,7</sup> Chart titled *alcohol related diseases and injuries* shows changes for when only the changes in the costs of alcohol-related diseases and injuries are modelled. <sup>#</sup>Chart titled *including all other healthcare costs* shows changes for both the costs of alcohol-related

diseases and injuries and the costs of all other health care due to changes in life expectancy, (i.e., costs incurred in added years of life since a reduction of alcohol consumption prolongs life).<sup>11,12</sup> Scenarios modelled: Avoidable burden: Population level elimination of alcohol consumption (Base case/main analysis); Avoidable burden with protective effects excluded: Population level elimination of alcohol consumption with protective effects excluded (assessing sensitivity to excluding the beneficial/protective effects of low and moderate alcohol consumption on ischemic heart disease, diabetes mellitus type 2 and Ischemic stroke)<sup>9</sup>; Met guidelines: Population met the current alcohol consumption guidelines (no more than 10 standard drinks a week).<sup>10</sup>

## References

1. Australian Bureau of Statistics. National, state and territory population: Statistics about the population and components of change (births, deaths, migration) for Australia and its states and territories. 2023. <https://www.abs.gov.au/statistics/people/population/national-state-and-territory-population/latest-release#data-downloads> (accessed July 2023).
2. Australian Bureau of Statistics. Population Projections, Australia. Population projections (based on assumptions of fertility, mortality and migration) for Australia, states and territories and capital cities. 2023. <https://www.abs.gov.au/statistics/people/population/population-projections-australia/latest-release#data-explorer-datasets> (accessed July 2023).
3. Global Burden of Disease Collaborative Network. Global Burden of Disease Study 2019 (GBD 2019) Results: Seattle, United States of America: Institute for Health Metrics and Evaluation (IHME), 2020.
4. GBD 2019 Diseases and Injuries Collaborators. Global burden of 369 diseases and injuries in 204 countries and territories, 1990-2019: a systematic analysis for the Global Burden of Disease Study 2019. *The Lancet* 2020; **396**(10258): 1204-22.
5. Barendregt JJ, Van Oortmarssen GJ, Vos T, Murray CJ. A generic model for the assessment of disease epidemiology: the computational basis of DisMod II. *Population health metrics* 2003; **1**(1): 1-8.
6. Australian Institute of Health and Welfare. Health expenditure Australia 2018–19. 2020. <https://www.aihw.gov.au/reports/health-welfare-expenditure/health-expenditure-australia-2018-19/data>.
7. Australian Institute of Health and Welfare. Health expenditure Australia 2019–20. 2021. <https://www.aihw.gov.au/reports/health-welfare-expenditure/health-expenditure-australia-2019-20/data>.
8. Barendregt JJ, Van Oortmarssen GJ, Van Hout BA, Van Den Bosch JM, Bonneux L. Coping with multiple morbidity in a life table. *Mathematical population studies* 1998; **7**(1): 29-49, 109.
9. GBD 2020 Alcohol Collaborators. Population-level risks of alcohol consumption by amount, geography, age, sex, and year: a systematic analysis for the Global Burden of Disease Study 2020. *The Lancet* 2022; **400**(10347): 185-235.
10. National Health and Medical Research Council. Australian Guidelines to Reduce Health Risks from Drinking Alcohol. Commonwealth of Australia, Canberra; 2020.
11. Van Baal PHM, Feenstra TL, Polder JJ, Hoogenveen RT, Brouwer WBF. Economic evaluation and the postponement of health care costs. *Health Economics* 2011; **20**(4): 432-45.
12. van Baal P, Meltzer D, Brouwer W. Future Costs, Fixed Healthcare Budgets, and the Decision Rules of Cost-Effectiveness Analysis. *Health Economics* 2016; **25**(2): 237-48.