

## Comparing DXA to MRI for body composition measurements at population scale - Supplementary Material

### Supplementary Tables

	Baseline imaging visit			Follow-up imaging visit		
	Full Cohort (N = 31,033)	Men (N = 14,743)	Women (N = 15,711)	Full Cohort (N = 1,928)	Men (N = 993)	Women (N = 935)
<b>White (n)</b>	29,858	14,419	15,306	1,875	961	881
<b>Age (yrs.)</b>	64.17 ± 7.75	64.88 ± 7.84	63.52 ± 7.61	65.21 ± 7.22	65.68 ± 7.20	64.80 ± 7.17
<b>Weight (kg)</b>	76.00 ± 15.09	83.48 ± 13.13	68.71 ± 12.73	75.57 ± 14.69	82.54 ± 12.91	67.44 ± 11.90
<b>Height (m)</b>	169.23 ± 9.29	176.12 ± 6.66	162.75 ± 6.26	169.82 ± 9.46	176.50 ± 6.80	162.68 ± 6.13
<b>BMI (kg/m<sup>2</sup>)</b>	26.45 ± 4.35	26.89 ± 3.82	25.94 ± 4.61	26.12 ± 4.21	26.48 ± 3.76	25.48 ± 4.31
<b>Waist circumference (cm)</b>	87.65 ± 12.62	93.61 ± 10.46	81.85 ± 11.51	87.93 ± 12.08	93.15 ± 10.29	81.81 ± 10.78
<b>Hip circumference (cm)</b>	100.37 ± 8.67	100.25 ± 7.17	100.33 ± 9.63	99.57 ± 8.17	99.39 ± 7.00	99.23 ± 8.69
<b>WHR</b>	0.87 ± 0.09	0.93 ± 0.06	0.81 ± 0.07	0.88 ± 0.09	0.94 ± 0.06	0.82 ± 0.07
<b>Systolic blood pressure (mmHg)</b>	138.35 ± 18.57	141.51 ± 17.35	135.34 ± 19.17	139.93 ± 17.99	142.58 ± 16.87	136.99 ± 18.56
<b>Diastolic blood pressure (mmHg)</b>	78.57 ± 10.03	80.41 ± 9.80	76.80 ± 9.93	78.85 ± 9.78	80.71 ± 9.74	76.85 ± 9.46
<b>Dominant hand grip strength (kg)</b>	31.13 ± 10.63	38.73 ± 8.99	23.94 ± 6.07	28.40 ± 10.58	35.21 ± 9.24	21.08 ± 6.12

Table S1: Demographics of the full cohort, separated by sex. Values are reported as mean ± standard deviation for continuous variables and counts (N) for categorical variables.

	Men (N = 992)				Women (N = 903)			
Android Region	MRI	DXA	R <sup>2</sup>	Regression equation	MRI	DXA	R <sup>2</sup>	Regression equation
Muscle mass (kg)	1.60 ± 0.27	-	-	-	0.97 ± 0.16	-	-	-
Lean mass (kg)	1.75 ± 0.30	4.11 ± 0.53	0.542	y = 1.3x + 1.85	1.09 ± 0.22	2.92 ± 0.38	0.375	y = 1.05x + 1.78
Fat mass (kg)	2.70 ± 1.10	2.57 ± 1.21	0.956	y = 1.07x - 0.33	2.27 ± 1.01	2.12 ± 1.09	0.966	y = 1.06x - 0.28
Fat percentage (%)	51.93 ± 11.32	36.70 ± 10.35	not linear	not linear	55.61 ± 12.53	39.67 ± 11.50	not linear	not linear
Visceral adipose tissue volume (l)	1.97 ± 0.96	1.73 ± 1.05	0.908	y = 1.04x - 0.32	1.04 ± 0.59	0.78 ± 0.62	0.89	y = 0.98x - 0.24
	Men (N = 993)				Women (N = 935)			
Gynoid Region	MRI	DXA	R <sup>2</sup>	Regression equation	MRI	DXA	R <sup>2</sup>	Regression equation
Muscle mass (kg)	6.02 ± 0.96	-	-	-	3.96 ± 0.61	-	-	-
Lean mass (kg)	7.76 ± 1.12	8.55 ± 1.07	0.781	y = 0.84x + 2.01	5.27 ± 0.84	6.06 ± 0.76	0.61	y = 0.7x + 2.37
Fat mass (kg)	3.61 ± 1.12	3.46 ± 1.19	0.96	y = 1.04x - 0.3	4.52 ± 1.30	4.54 ± 1.54	0.921	y = 1.13x - 0.59
Fat percentage (%)	37.97 ± 7.00	28.26 ± 5.98	not linear	not linear	53.56 ± 6.61	41.87 ± 6.76	not linear	not linear

Table S2: Body composition measured via DXA and MRI at the follow-up imaging visit separated by sex within android and gynoid regions.  $N_{\text{Android}} = 1,895$ .  $N_{\text{Gynoid}} = 1,928$ . Android muscle mass was not available from DXA measures, so the regression was done between DXA lean mass and MRI muscle mass. After Bonferroni correction ( $p = 0.00094$ ), all the linear regression coefficients were statistically significant.

## Supplementary Figures

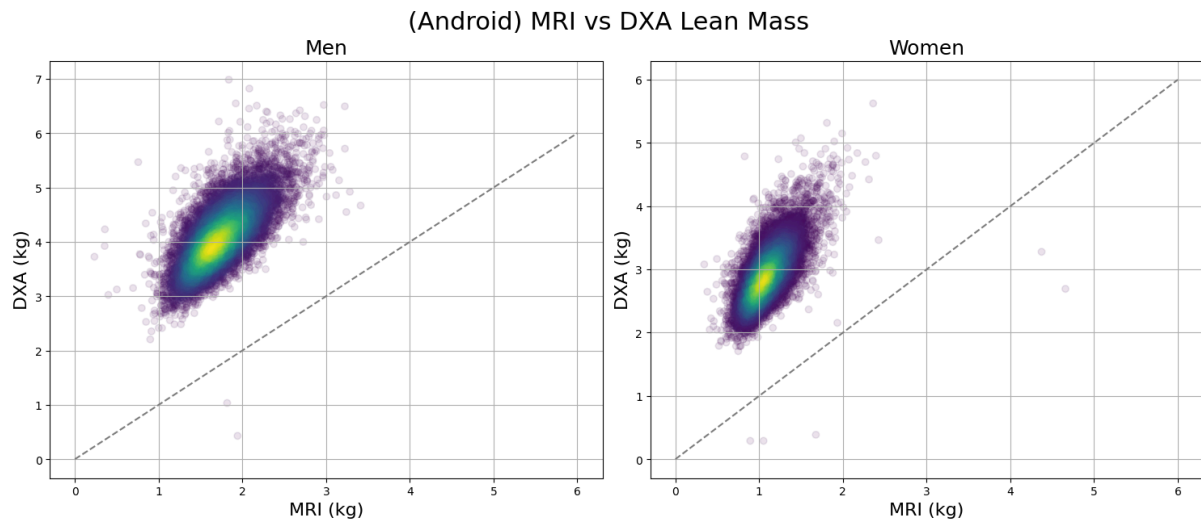


Figure S1: Scatterplots of DXA (y-axis) by MRI (x-axis) android lean mass (kg), separated by sex.

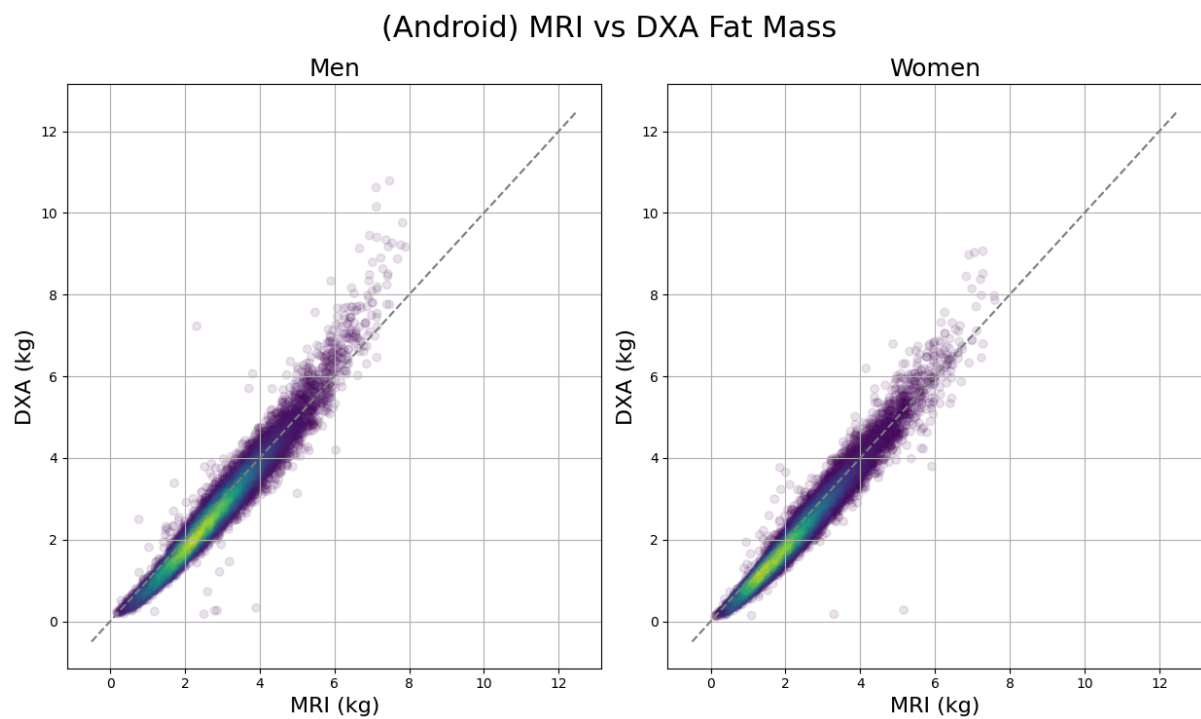


Figure S2: Scatterplots of DXA (y-axis) by MRI (x-axis) android fat mass (kg), separated by sex.

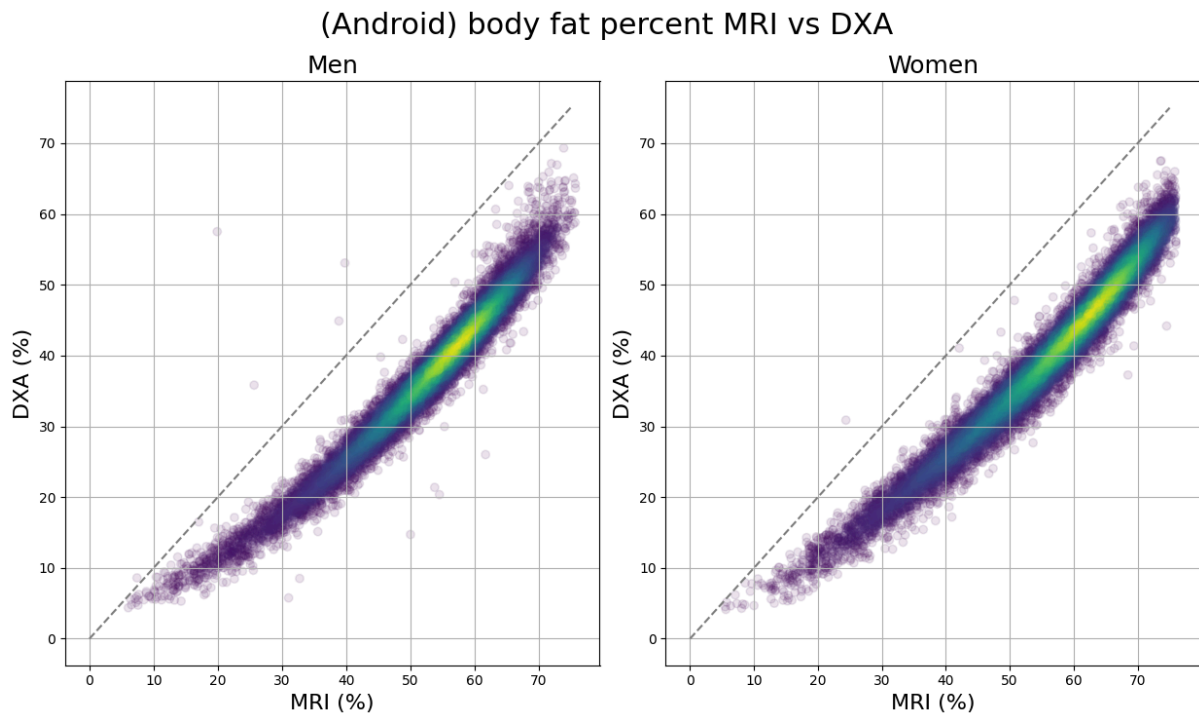


Figure S3: Scatterplots of DXA (y-axis) by MRI (x-axis) android fat percent (%), separated by sex.

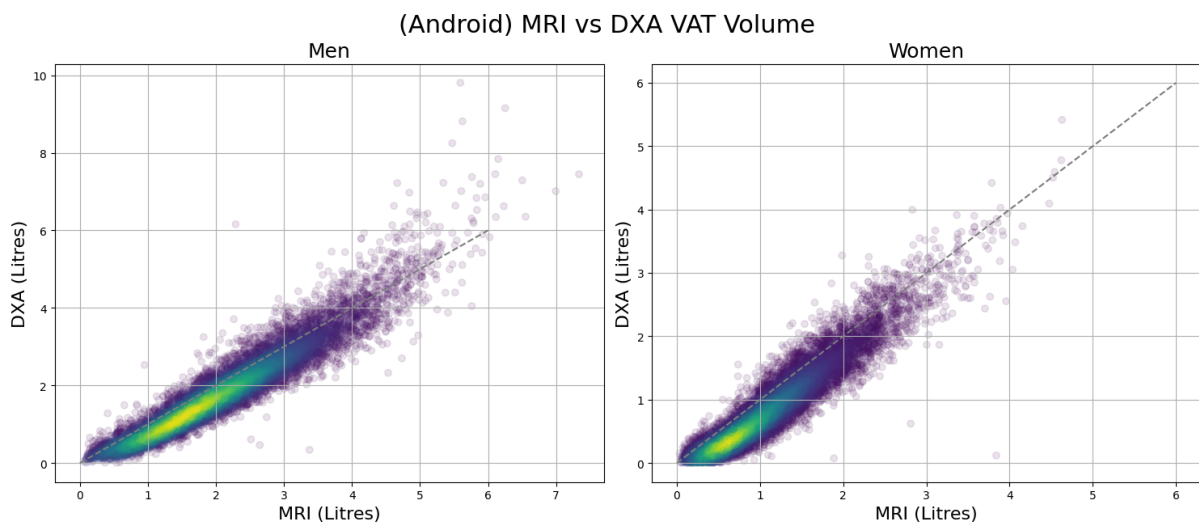


Figure S4: Scatterplots of DXA (y-axis) by MRI (x-axis) android visceral adipose tissue (VAT) volume (litres), separated by sex.

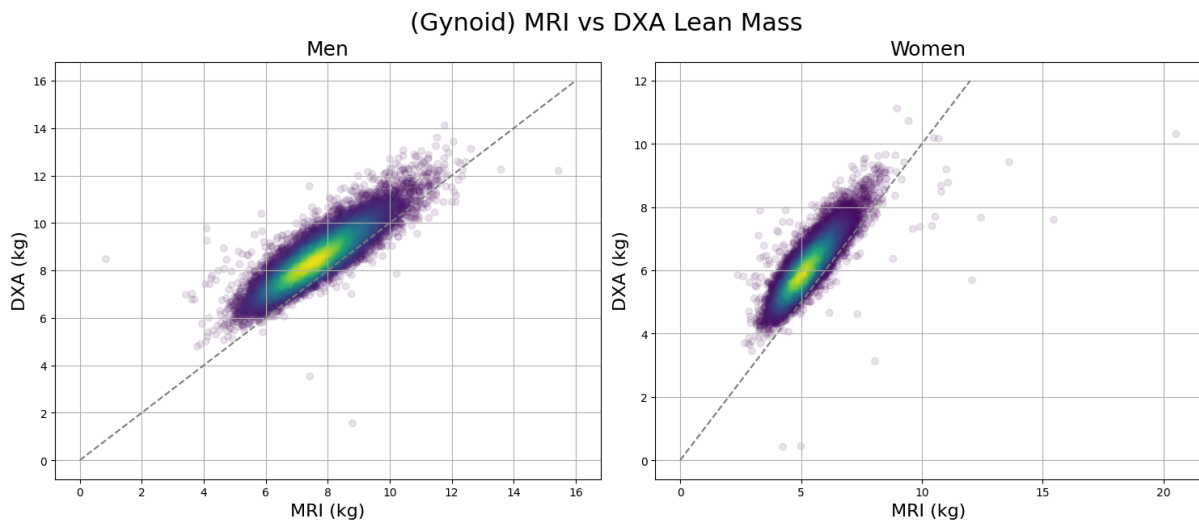


Figure S5: Scatterplots of DXA (y-axis) by MRI (x-axis) gynoid lean mass (kg), separated by sex.

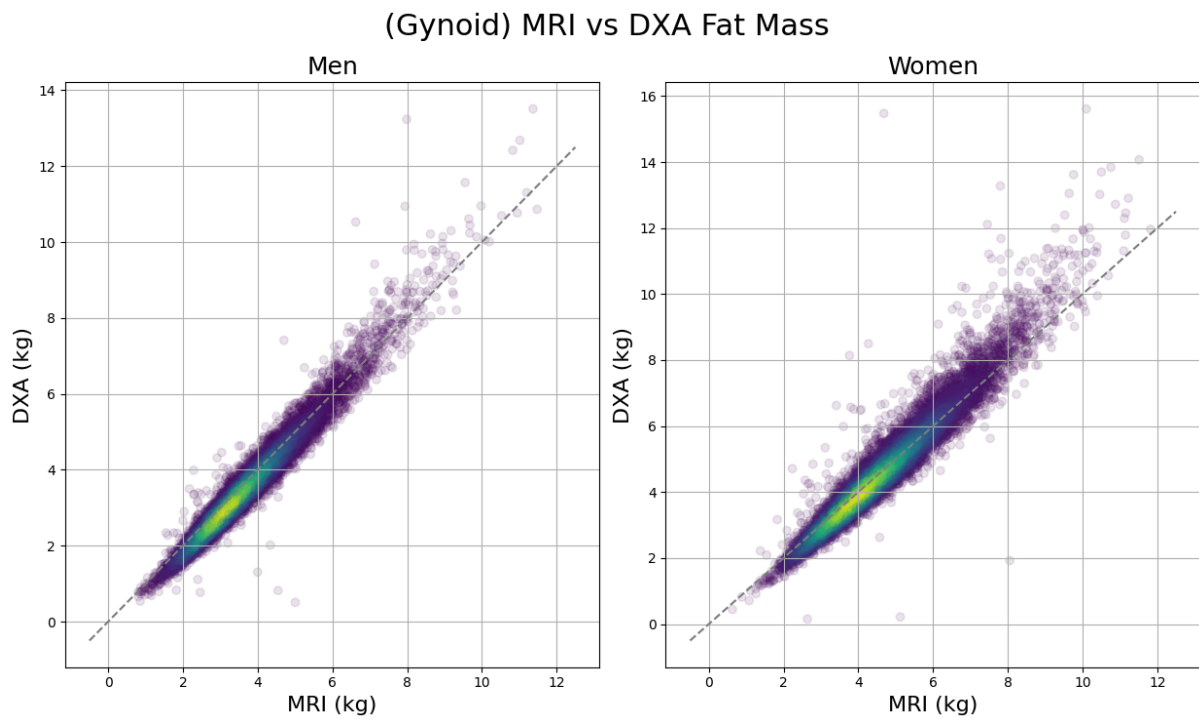


Figure S6: Scatterplots of DXA (y-axis) by MRI (x-axis) gynoid fat mass (kg), separated by sex.

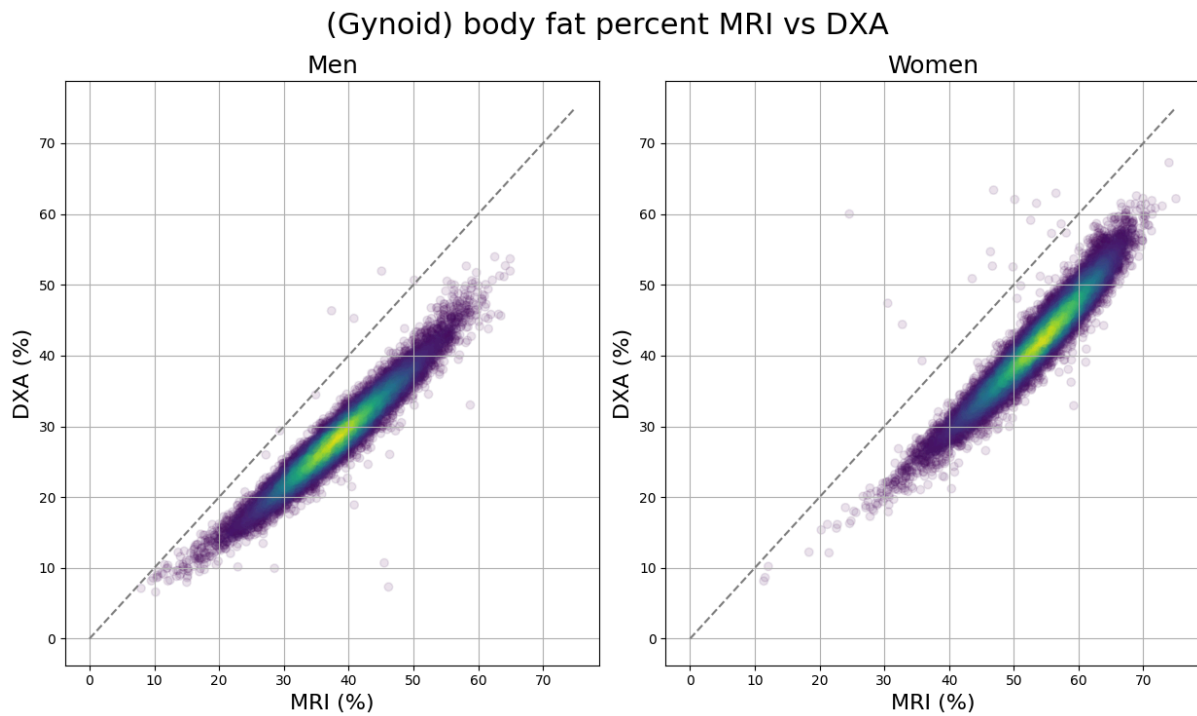
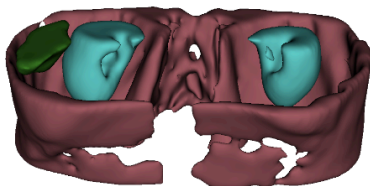
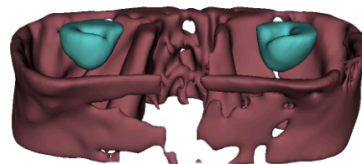


Figure S7: Scatterplots of DXA (y-axis) by MRI (x-axis) gynoid fat percentage (%), separated by sex.

**a** Baseline 1.21L "lean", 1L Muscle



**c** Re-imaging 1.06L "lean", 0.99L Muscle



**b** Baseline 0.21L Non-muscle tissue



**d** Baseline 0.07L Non-muscle tissue



Figure S8: Example of MRI android lean tissue including abdominal organs and muscle at baseline (a,b) and follow-up (c,d) imaging visit for one participant. The figure demonstrates a 12.4% decrease in lean tissue when including the liver and kidneys, but only a 1% decrease when these organs are omitted, highlighting the impact of different breath holds on anatomy captured within the android region.