

Supplemental Materials for: Sex-specific Risk Factors for Survival in B-cell Non-Hodgkin Lymphoma Patients after Anti-CD19 CAR T-Cell Therapy

Manishkumar S. Patel¹, Agrima Mian², Akansha Jalota¹, Peter Bazeley³, Sujata Patil^{3,4}, Brian T. Hill², and Neetu Gupta¹

¹Department of Inflammation and Immunity, Lerner Research Institute; ²Department of Hematology and Medical Oncology, Taussig Cancer Institute; ³Department of Quantitative Health Sciences, Lerner Research Institute; ⁴Department of Cancer Biostatistics, Taussig Cancer Institute, Cleveland Clinic, Cleveland, OH

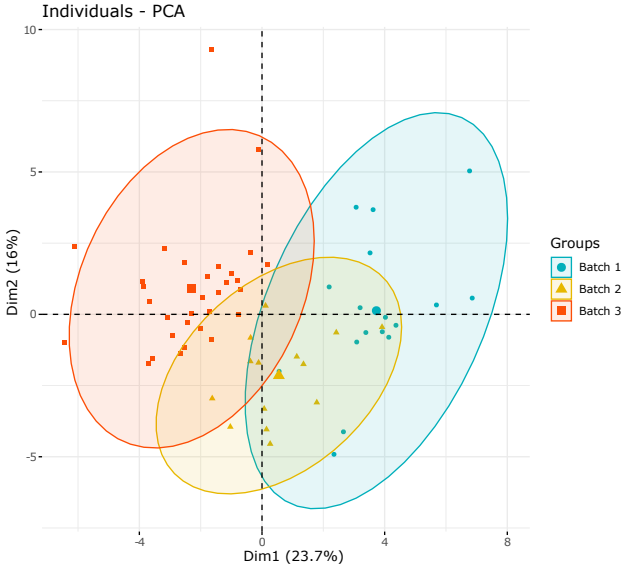
Correspondence to: Neetu Gupta, Ph.D.; 9500 Euclid Avenue, NE40, Cleveland, OH 44195;
Email: guptan@ccf.org; Phone: (216) 444-7455; Fax: (216) 444-9329

Running Title: Sex-specific risk factors in CAR T-cell therapy

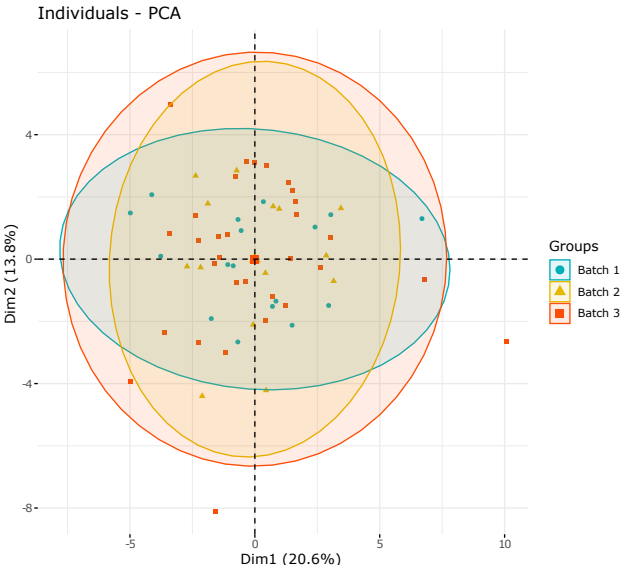
Keywords: CAR T-cells, survival, sex, cytokines, tumor burden

Supplemental Figure 1

A



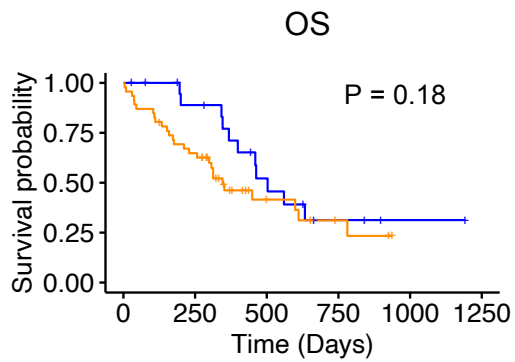
B



Supplemental Figure 1. Principal component analysis of all samples quantified in three different batches. (A) Before batch correction, (B) After batch correction.

Supplemental Figure 2

A

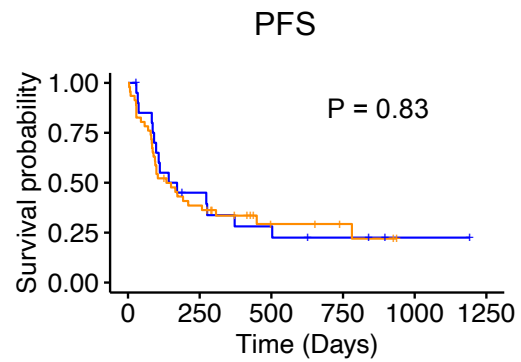


Number at risk

| | | | | | | |
|---|----|----|---|---|---|---|
| — | 21 | 16 | 8 | 3 | 1 | 0 |
| — | 46 | 29 | 8 | 4 | 0 | 0 |

— Females — Males

B

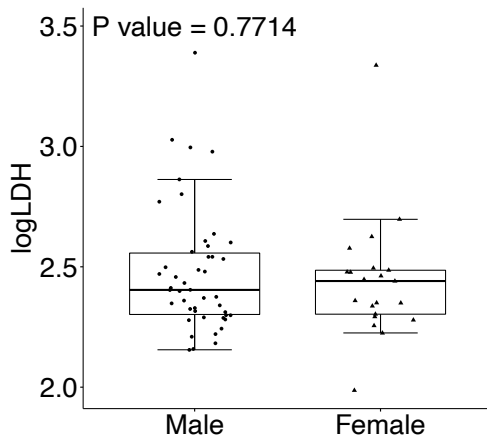


Number at risk

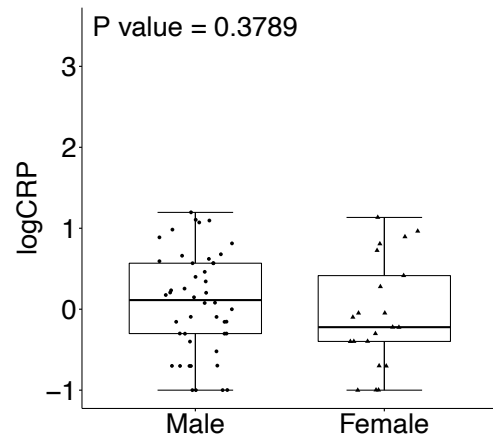
| | | | | | | |
|---|----|----|---|---|---|---|
| — | 21 | 8 | 5 | 3 | 1 | 0 |
| — | 46 | 17 | 6 | 4 | 0 | 0 |

— Females — Males

C

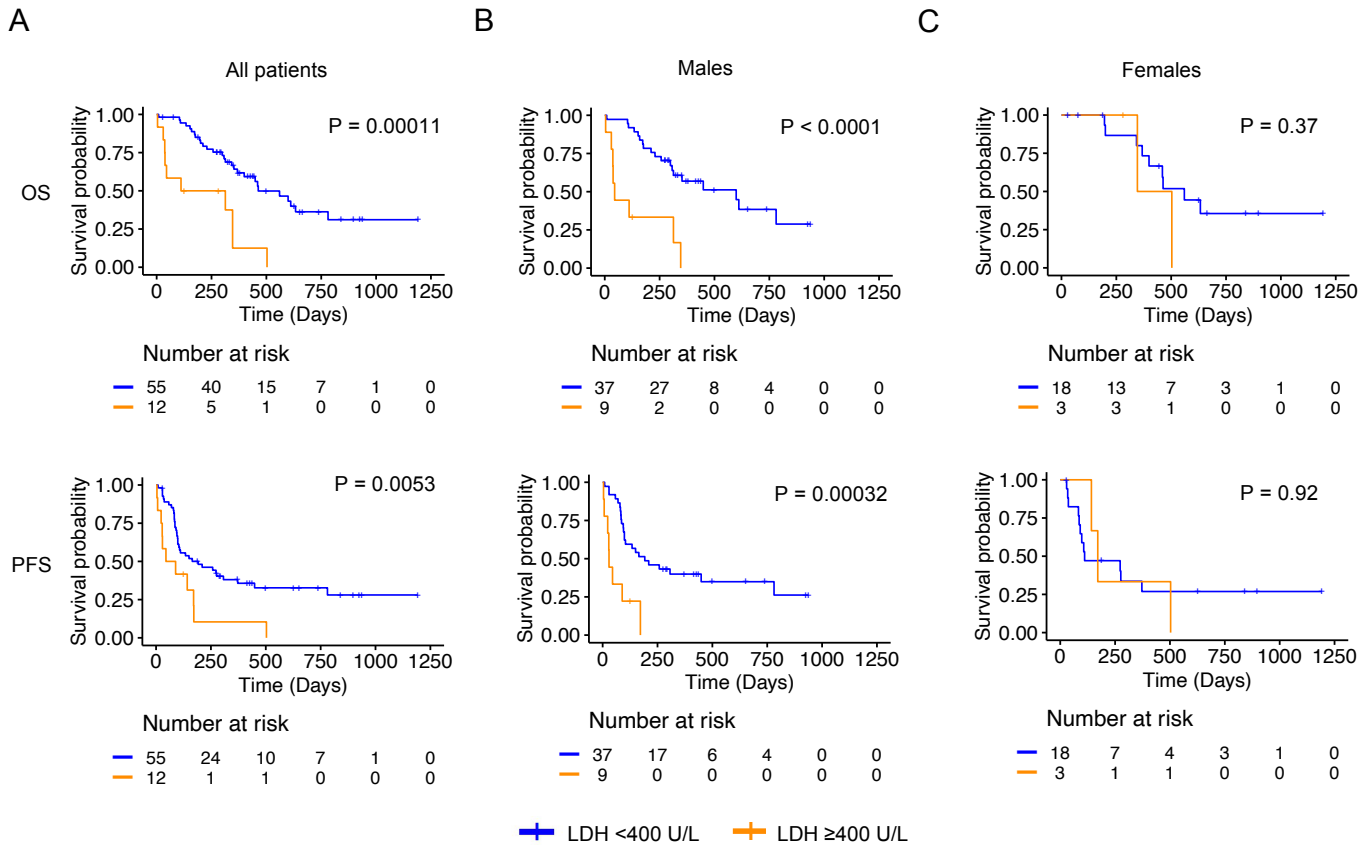


D



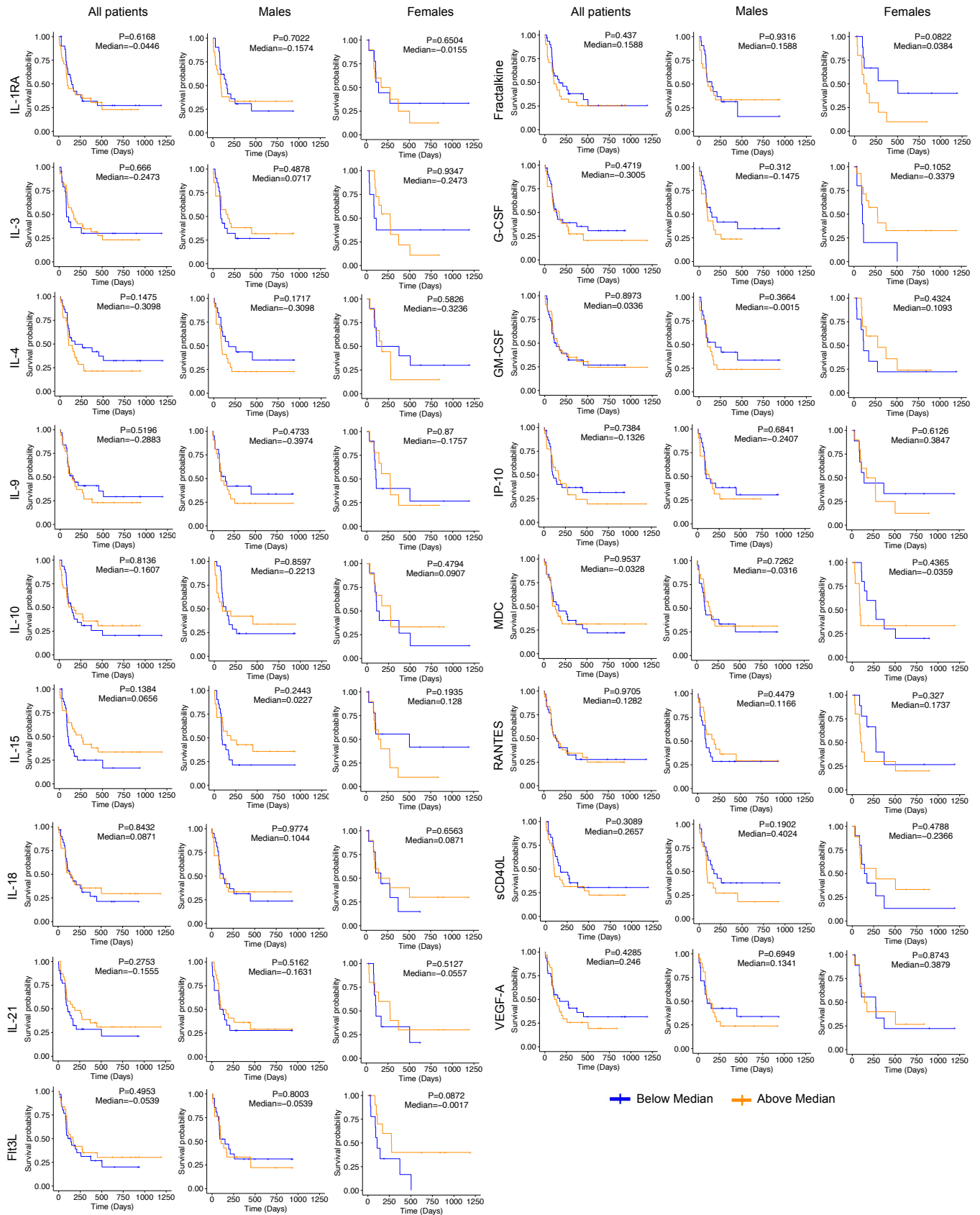
Supplemental Figure 2. Survival, tumor burden and CRP in male and female LBCL patients. Kaplan Meier analysis of OS (**A**), and PFS (**B**), and pre-treatment relative abundance of LDH (**C**), and CRP (**D**) in male and female patients. Males, n=46; Females, n=21. Yes, n=45; Kym, n=22.

Supplemental Figure 3



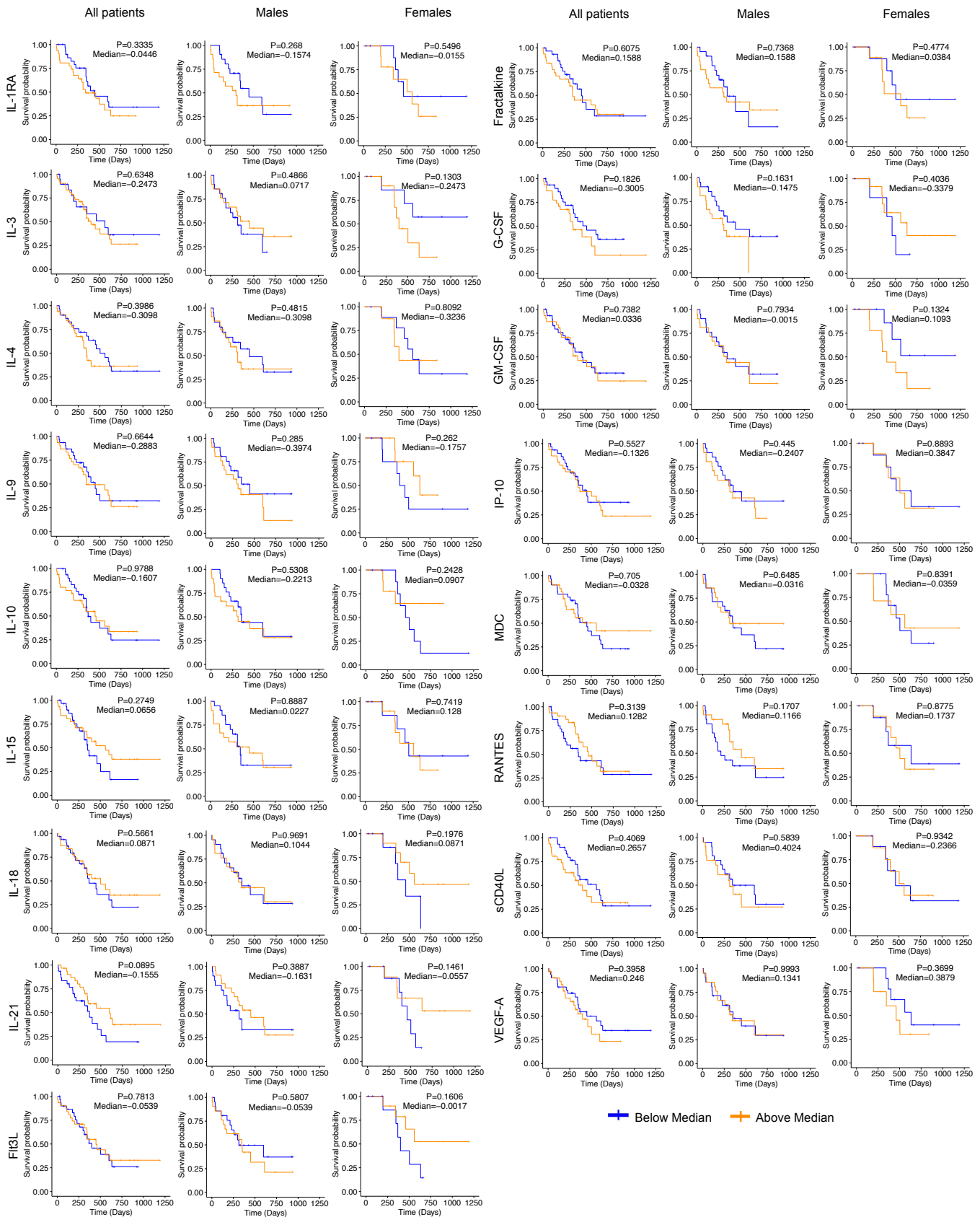
Supplemental Figure 3. Male patients with higher pre-treatment tumor burden show poorer survival after treated with anti-CD19 CAR T-cells. Association of baseline LDH levels with overall survival (OS), and progression-free survival (PFS) in both male and female (A), only male (B), or only female (C), LBCL patients. P<0.05; Males, n=46; Females, n=21; Yes, n=45; Kym, n=22. LDH cut-off, 400 U/l.

Supplemental Figure 4



Supplemental Figure 4. Lack of association between the relative abundance of a subset of cytokines/chemokines and PFS in LBCL patients receiving anti-CD19 CAR T-cell therapy. Association between relative abundance of the indicated cytokines and PFS in all, male or female LBCL patients. ($P < 0.05$), Males, $n=42$; Females, $n=20$; Yes, $n=42$; Kym, $n=20$.

Supplemental Figure 5



Supplemental Figure 5. Lack of association between the relative abundance of a subset of cytokines/chemokines and OS in LBCL patients receiving anti-CD19 CAR T-cell therapy. Association between relative abundance of the indicated cytokines and OS in all, male or female LBCL patients. ($P < 0.05$), Males, $n=42$; Females, $n=20$; Yes, $n=42$; Kym, $n=20$.