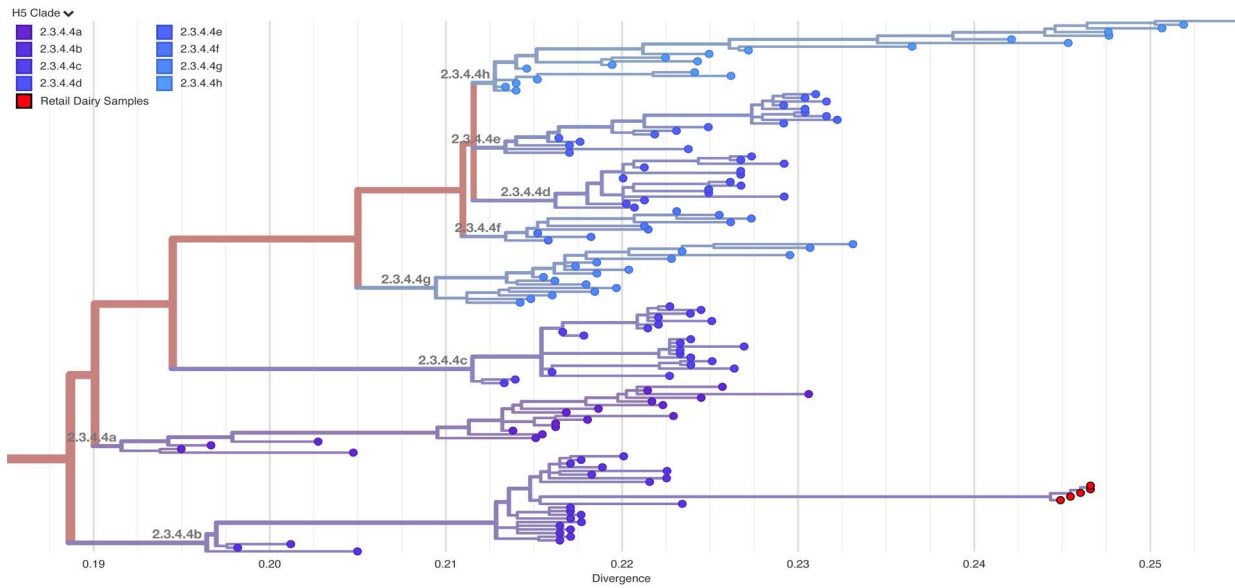


# Supplemental Material:

**S1 Fig: Nextclade clustering of HA segment against the H5Nx 2.3.4.4 clade tree.**



## Supplemental data 1:

To test primer specificity *in silico*, several H5 HA sequences from birds [OR858836.1 (goose, NY 2023), OR819057.1 (peregrine falcon, NY 2022), OQ968076.1 (goose, WY 2022), OQ968052.1 (goose, MN 2022), OQ968012.1 (chicken, WI 2022)] were downloaded and the two sets of selected primers and probes were aligned to ensure they would bind to other 2.3.4.4b sequences from the current outbreak in North American birds. This was done to confirm the primers would continue working in the event of a new introduction from birds to cows. Sequences from A/Victoria/4897/2022 H1N1 and A/Darwin/9/2021 H3N2, two isolates that have been recommended as vaccine components in recent years, were also downloaded to ensure the selected primers and probes would not align to commonly-circulating sequences (47). The primer sequences did not align to sequences from influenza B viruses B/Austria/13594/7/2021 (B/Victoria lineage) and B/Phuket/3073/2013 (B/Yamagata lineage). To test this specificity *in vitro*, the two primer/probe sets were tested on H5N1 clade 2.3.4.4b vRNA, A/California/04/2009(H1N1) vRNA, and Influenza A/Kawasaki/173/2001 M gene RNA transcript. Only one set proved specific to the H5 sequence, with the primer sequence 5'-GGGAAGCTATGCGACCTAAAT-3' (forward) and 5'-CATTCCGGCACTCTGATGAA-3' (reverse) and the probe sequence 5'-ACATTGGGTTTC-CGAGGAGCCATC-3' with a FAM fluorophore. This set was used for all further analysis.

**S1 Table: Sequences from Andersen Lab github used for generating tiled-amplicon scheme.**

Sequence
Consensus SRR28752446 HA cns threshold 0.5 quality 20
Consensus SRR28752447 HA cns threshold 0.5 quality 20











Consensus SRR28752673 HA cns threshold 0.5 quality 20
Consensus SRR28752674 HA cns threshold 0.5 quality 20
Consensus SRR28752675 HA cns threshold 0.5 quality 20
Consensus SRR28752676 HA cns threshold 0.5 quality 20
Consensus SRR28752677 HA cns threshold 0.5 quality 20
Consensus SRR28752678 HA cns threshold 0.5 quality 20
Consensus SRR28752679 HA cns threshold 0.5 quality 20
Consensus SRR28752680 HA cns threshold 0.5 quality 20
Consensus SRR28752681 HA cns threshold 0.5 quality 20
Consensus SRR28752682 HA cns threshold 0.5 quality 20
Consensus SRR28752683 HA cns threshold 0.5 quality 20
Consensus SRR28752684 HA cns threshold 0.5 quality 20

**S2 Table: Primer pools used in tiled-amplicon sequencing.**

Name	Pool name	Sequence
HPAI-HA-250 1 LEFT	1	TGGAGAACATAGTACTACTTCTTGCAA
HPAI-HA-250 1 RIGHT	1	GATGAATTCGTCGCACATTGGG
HPAI-HA-250 2 LEFT	2	ATGGGGTGAAGCCACTGATTTT
HPAI-HA-250 2 RIGHT	2	CCCTAGTGATGTTTCATGATTTGGC
HPAI-HA-250 3 LEFT	1	CACATGTTGAGCAGAATAAATCATTTTGAG
HPAI-HA-250 3 RIGHT	1	GTCTGCTCTTCTGCATTGTTGG
HPAI-HA-250 4 LEFT	2	GATGCATACCCAACAATAAAGATAAGCT
HPAI-HA-250 4 RIGHT	2	TGGATTGCATCATCTGGTTTTAAGATTG
HPAI-HA-250 5 LEFT	1	GCTACTAGATCCCAAGTAAACGGG
HPAI-HA-250 5 RIGHT	1	GAGAGGATGTATGTTGTGAAATGGC
HPAI-HA-250 6 LEFT	2	AAAGTGGAGTGGAAATATGGCCA
HPAI-HA-250 6 RIGHT	2	ACCAACCATCAACCATTCCCTG
HPAI-HA-250 7 LEFT	1	GAAAAAGAGGTCTGTTTGGGGC
HPAI-HA-250 7 RIGHT	1	TGTTCAAATTCTCTATCCTCCTTTCTAAGT
HPAI-HA-250 8 LEFT	2	ACTCAATCATTGACAAAATGAACACTCA
HPAI-HA-250 8 RIGHT	2	TTCGAAACAGCCGTTACCCAG
HPAI-HA-250 9 LEFT	1	GTCAAGAACCTTTACGACAAAGTCAG
HPAI-HA-250 9 RIGHT	1	GGGAACCTTGCCGCTGTTGAAT
HPAI-MP-250 1 LEFT	1	CTAACCGAGGTCGAAACGTACG
HPAI-MP-250 1 RIGHT	1	CCACTTAGGGCACTTTGGACAA
HPAI-MP-250 2 LEFT	2	TTGGGATTTGTGTTACGCTCA
HPAI-MP-250 2 RIGHT	2	CAATGCCACTTCTGCGGTCA
HPAI-MP-250 3 LEFT	1	CGGTGCACTTGCCAGTTGTAT
HPAI-MP-250 3 RIGHT	1	TCCATGGCTTCCACTGCTTG
HPAI-MP-250 4 LEFT	2	TGTTTTGGCCAGTACTACAGC
HPAI-MP-250 4 RIGHT	2	AGATCCCAATGATACTTGCGGC
HPAI-MP-250 5 LEFT	1	CCTTGAAAATTTGCAGGCCTACC
HPAI-MP-250 5 RIGHT	1	TCAACATCCACAGCACTCTGC
HPAI-NA-250 1 LEFT	1	GAATCCAAATCAGAAGATAACAACCATTG
HPAI-NA-250 1 RIGHT	1	GCCCGCTAATGTTACCGAAGTA
HPAI-NA-250 2 LEFT	2	GGTAAATCAGACGTATATCAACATCAGC

HPAI-NA-250 2 RIGHT	2	GAGTGTTTGTCATTCAGCAGAGC
HPAI-NA-250 3 LEFT	1	TTGTTATAAGAGAACCATTCATCTCATGC
HPAI-NA-250 3 RIGHT	1	TCTGGACCAGAAATACCGATTGTC
HPAI-NA-250 4 LEFT	2	TTTGAGTCTGTTGCTTGGTCGG
HPAI-NA-250 4 RIGHT	2	TGAAGATTTTATATGAGGCCTGCCC
HPAI-NA-250 5 LEFT	1	CTCAAGAATCTGAATGTGCTTGCG
HPAI-NA-250 5 RIGHT	1	ACTCCAGATTTTGATTAAAGATACCCAC
HPAI-NA-250 6 LEFT	2	CGGGTGATATTATGTGTGTGTGC
HPAI-NA-250 6 RIGHT	2	CGCTTCTGGAAGTAGTGCTTTTTG
HPAI-NA-250 7 LEFT	1	GGCATATGGGGTAAAAGGGTTTTTC
HPAI-NA-250 7 RIGHT	1	TAGCTCAACCCAGAAACAAGGC
HPAI-NA-250 8 LEFT	2	GGACAGTAGTTTCTCAGTGAAGCA
HPAI-NA-250 8 RIGHT	2	CAATGGTGAATGGCAACTCAGC
HPAI-NP-250 1 LEFT	1	CTCAAGGCACCAAACGATCCTA
HPAI-NP-250 1 RIGHT	1	AGCACTGGGATGTTCTCCA
HPAI-NP-250 2 LEFT	2	CCAAAACAGCATAACCATAGAAAGGA
HPAI-NP-250 2 RIGHT	2	GGAATGCCAAATCATCAAGTGAGTG
HPAI-NP-250 3 LEFT	1	GAGATCAGAAGAATTTGGCGTCAAG
HPAI-NP-250 3 RIGHT	1	TCCTCGTTTGATCATTCTGAATCAATTC
HPAI-NP-250 4 LEFT	2	TCACTGATGCAAGGCTCAACC
HPAI-NP-250 4 RIGHT	2	CATTCCCAGGATTCCGGCTTT
HPAI-NP-250 5 LEFT	1	TCAAGGGAAAGCTCCAAACAGC
HPAI-NP-250 5 RIGHT	1	TGGAGCAGACGGAAAGGATCA
HPAI-NP-250 6 LEFT	2	ACTTGCTGTAGCCAGTGGATATG
HPAI-NP-250 6 RIGHT	2	GCAATCTGAACTCCTCTGGTGG
HPAI-NP-250 7 LEFT	1	GAGAGTGTCAAGCTTCATCAGAGG
HPAI-NP-250 7 RIGHT	1	TGATGGTTGCTCTCTCGAATGG
HPAI-NP-250 8 LEFT	2	TCTGCAGGACAAATCAGCGTAC
HPAI-NP-250 8 RIGHT	2	CATTGTTTATGTCAAAGGAAGGCA
HPAI-NS-250 1 LEFT	1	CCAACACTGTGTTAAGCTTTCAGG
HPAI-NS-250 1 RIGHT	1	GGCACAGAGGCAATAGTCATTTT
HPAI-NS-250 2 LEFT	2	TGCTGGGAAGCAGATAGTGA
HPAI-NS-250 2 RIGHT	2	TCCAGCCGATTGAAGATCACAC
HPAI-NS-250 3 LEFT	1	TCCCTCAGTATCAGAATGGACCA
HPAI-NS-250 3 RIGHT	1	AAAGTTTCAGAGACTCGAACTGTGT
HPAI-NS-250 4 LEFT	2	TGCCTTCTCTCCAGGACATACT
HPAI-NS-250 4 RIGHT	2	TCTGTGATCTTTAGTCTGTGTGCGC
HPAI-PA-250 1 LEFT	1	GGAAGACTTTGTGCGACAATGC
HPAI-PA-250 1 RIGHT	1	GCTCGGTCTCTCCCTTCGATTA
HPAI-PA-250 2 LEFT	2	GTCTGTTTCATGTATTCGGATTCCA
HPAI-PA-250 2 RIGHT	2	TGAACTTCCCTTCGCGTACTC
HPAI-PA-250 3 LEFT	1	CCTCCCTGATTTGTATGACTACAGAG
HPAI-PA-250 3 RIGHT	1	AGGAATCCCATAGACCTCTACTGG
HPAI-PA-250 4 LEFT	2	TGATGAAGAGAGCAGAGCAAGAA
HPAI-PA-250 4 RIGHT	2	AGAAAGCTTGCCCTCAATGCA



HPAI-PA-250 5 LEFT	1	ACCGAACTTCTCCAGCCTTGA
HPAI-PA-250 5 RIGHT	1	TATGCCCTCCCCCTCATGACTA
HPAI-PA-250 6 LEFT	2	ATTACCTGATGGGCCTCCCT
HPAI-PA-250 6 RIGHT	2	GGAATTTTCTCCTCATTTCATGTCTTG
HPAI-PA-250 7 LEFT	1	TGAGAAAGGCATAAACCTAATTACCT
HPAI-PA-250 7 RIGHT	1	TTCACTCTGAATCCAGCTTGCT
HPAI-PA-250 8 LEFT	2	AGATGTTAGCGATCTAAGACAGTACG
HPAI-PA-250 8 RIGHT	2	GGGCTGTGTTTATGTATACTCCCTT
HPAI-PA-250 9 LEFT	1	GGAACTATTTACAGCGGAGGT
HPAI-PA-250 9 RIGHT	1	GTTAGAGAGAATTCCATGCTCACAAAG
HPAI-PA-250 10 LEFT	2	GGAGGACAAATCTGTATGGATTCATT
HPAI-PA-250 10 RIGHT	2	CTCATCTCCATGCCCCATTTC
HPAI-PA-250 11 LEFT	1	TGCTCCTACGGACTGCAATAGG
HPAI-PA-250 11 RIGHT	1	TTCCAATAGAGCCTTCCTCCA
HPAI-PA-250 12 LEFT	2	GGCCGAATCTTCTGTCAAAGAGA
HPAI-PA-250 12 RIGHT	2	CCAAGATCGAAGGTTCCAGGTT
HPAI-PB1-250 1 LEFT	1	CCTTACTCTTCTTGAAAGTTCAGC
HPAI-PB1-250 1 RIGHT	1	CGCAGTCCGTTTGTGCATAC
HPAI-PB1-250 2 LEFT	2	GGCACCTCAACTCAATCCAATTG
HPAI-PB1-250 2 RIGHT	2	CCTCTATAGTATTAGCTAATGCAGTTGC
HPAI-PB1-250 3 LEFT	1	GAGTGGACAAGTTGACCCAAGG
HPAI-PB1-250 3 RIGHT	1	CCGTTGTGTGACCATTTTCTTG
HPAI-PB1-250 4 LEFT	2	GTGGTGAATCAATGGATAAAGAGGA
HPAI-PB1-250 4 RIGHT	2	AGTACACAAACCCTCTGATTTGCA
HPAI-PB1-250 5 LEFT	1	TGACAAAAGACGCCGAAAGAGG
HPAI-PB1-250 5 RIGHT	1	CTGGTTCTCATTCCATTTAGTGTGTC
HPAI-PB1-250 6 LEFT	2	GTGAGAAAGATGATGACTAATTCGCAA
HPAI-PB1-250 6 RIGHT	2	CTGCCGGTATTTGTGTTCGAAG
HPAI-PB1-250 7a LEFT	1	CAGGAATGTATTGAGCATTGCACC
HPAI-PB1-250 7a RIGHT	1	CCCAGAACTGTACTCAGCATGTT
HPAI-PB1-250 7b LEFT	1	GGAATGTATTGAGCATTGCACC
HPAI-PB1-250 7b RIGHT	1	CCCAGAACTGTACTCAGCATG
HPAI-PB1-250 8 LEFT	2	CCTCTTCTAATAGATGGTACGGCC
HPAI-PB1-250 8 RIGHT	2	GCTCATATTGATTCCTACCAGCTTG
HPAI-PB1-250 9 LEFT	1	GTGAATGCTCCAAATCATGAGGG
HPAI-PB1-250 9 RIGHT	1	TTGTTGATCATGTTGTTCTTTATCACTGT
HPAI-PB1-250 10 LEFT	2	GAGTTGCCAGCTTTGGAGTT
HPAI-PB1-250 10 RIGHT	2	TCCTGGTTTTGAGCGGGTTG
HPAI-PB1-250 11 LEFT	1	GGAGACACACAAATTCAAACAAGGAG
HPAI-PB1-250 11 RIGHT	1	GCATCACCACAGCATTGTTTAC
HPAI-PB1-250 12 LEFT	2	GGGAAGGCTTTGTAATCCCCTG
HPAI-PB1-250 12 RIGHT	2	CTCCTGTATGAACTGCTAGGGAAG
HPAI-PB1-250 13 LEFT	1	CGCTCTATTCTTAATACAAGCCAAAGG
HPAI-PB1-250 13 RIGHT	1	ATTTCTGCCGTCTGAGCTCTTC
HPAI-PB2-250 1 LEFT	1	TGGAGAGAATAAAAGAACTGAGAGATCT

HPAI-PB2-250 1 RIGHT	1	GATCCGGCATCATTGTCTTGC
HPAI-PB2-250 2 LEFT	2	TATCCAATCGCAGCAGACAAGC
HPAI-PB2-250 2 RIGHT	2	TGGTTTCTGAAGTGTACAGGGC
HPAI-PB2-250 3 LEFT	1	ACAATTCACTATCCAAAGGTATACAAAACC
HPAI-PB2-250 3 RIGHT	1	CCTGGAGTTCTTCTTTCTTTTCCTTTG
HPAI-PB2-250 4 LEFT	2	TTCCAAATGAAGTGGGAGCGAG
HPAI-PB2-250 4 RIGHT	2	CGTTTCTCACTTCTCCTCCTGG
HPAI-PB2-250 5 LEFT	1	GTGTCTACATTGAGGTGCTGCA
HPAI-PB2-250 5 RIGHT	1	CATATGTCCACGGCTTGTTCCT
HPAI-PB2-250 6 LEFT	2	CCACAGCACACAAATTGGAGGA
HPAI-PB2-250 6 RIGHT	2	CGTTGCTCTTCTTCCAACCATAGT
HPAI-PB2-250 7 LEFT	1	GTCAAAGGGAAGAAGAGGTGCT
HPAI-PB2-250 7 RIGHT	1	GTTGACAAAGTTCAGATCACCTCG
HPAI-PB2-250 8 LEFT	2	GAAGCAATAATCGTGGCCATGG
HPAI-PB2-250 8 RIGHT	2	TGACTCTTATTCCCCTCAGTGACA
HPAI-PB2-250 9 LEFT	1	TGACAATGTGATGGGAATGATCGG
HPAI-PB2-250 9 RIGHT	1	TGATCTCCCACATCATTGATGACG
HPAI-PB2-250 10 LEFT	2	TCACCCGAAGAAGTCAGCGA
HPAI-PB2-250 10 RIGHT	2	TGTCCTCACGAACCCACTGTAT
HPAI-PB2-250 11 LEFT	1	AAGATGGAGTTCGAGCCATTCC
HPAI-PB2-250 11 RIGHT	1	TTGAACACTGGAGAATTGCCTCTT
HPAI-PB2-250 12 LEFT	2	TGCAATTCTCCTCTCTGACTGTG
HPAI-PB2-250 12 RIGHT	2	TGCTCAGCTCATTGATGCTCAG
HPAI-PB2-250 13 LEFT	1	CGAAGATCCAGATGAAGGCACA
HPAI-PB2-250 13 RIGHT	1	TGGCCATCCGAATTCTTTTGGT
H5 HPAI-PB2-250-0-LEFT	2	ATATACGCGTAGCRAAAGCAGGTCAA
H5 HPAI-PB2-250-0-RIGHT	2	CTTGCTCCAGAGGGTTTGTCC
H5 HPAI-PB2-250-14-LEFT	2	TGAAGGCACAGCTGGAGTGG
H5 HPAI-PB2-250-14-RIGHT	2	GCGTAGTAGAAACAAGGTCG
H5 HPAI-PB1-250-0-LEFT	2	ATATACGCGTAGCRAAAGCAGGCAAA
H5 HPAI-PB1-250-0-RIGHT	2	CCACTTGGCTCATTGTCATCAGG
H5 HPAI-PB1-250-14-LEFT	2	ACGAACAGATGTATCAAAGTGCTGC
H5 HPAI-PB1-250-14-RIGHT	2	ATATACGCGTAGTAGAAACAAGGCAT
H5 HPAI-PA-250-0-LEFT	2	ACGCGTAGCAAAGCAGGTACTIONGAT
H5 HPAI-PA-250-0-RIGHT	2	ACTATTCACCACTGTCCAGGCC
H5 HPAI-PA-250-13-LEFT	1	ATATGCATCTCCTCAACTCGAGGG
H5 HPAI-PA-250-13-RIGHT	1	ACGCGTAGTAGAAACAAGGTACTIONTTTTTGGACAG
H5 HPAI-HA-250-0-LEFT	2	ATATACGCGTAGCRAAAGCAGGGGTTCACTCTG
H5 HPAI-HA-250-0-RIGHT	2	TTCCGAGGAGCCATCCAGC
H5 HPAI-HA-250-10-LEFT	2	GGAAAGTGTGARAAATGGGACG
H5 HPAI-HA-250-10-RIGHT	2	ATATACGCGTAGTAGAAACAAGGGTG
H5 HPAI-NP-250-0-LEFT	2	ATATACGCGTAGCAAAGCAGGGTAGATAATCAC
H5 HPAI-NP-250-0-RIGHT	2	CTCATCAAATGCCGAGAGAACC
H5 HPAI-NP-250-9-LEFT	1	CAACAGAGAGCATCTGCAGGAC
H5 HPAI-NP-250-9-RIGHT	1	ATATACGCGTAGTAGAAACAAGGGTATT

H5 HPAI-NA-250-0-LEFT	2	ATATACGCGTAGCRAAAGCAGGAGTTC
H5 HPAI-NA-250-0-RIGHT	2	GCCTGCTCAGCAAGAAAATTGG
H5 HPAI-NA-250-9-LEFT	1	ACTGGTCAGGATATAGTGGGAG
H5 HPAI-NA-250-9-RIGHT	1	ATATACGCGTAGTAGAAACAAGGAGT
H5 HPAI-MP-250-0-LEFT	2	ATATACGCGTAGCRAAAGCAGGTAGATATTG
H5 HPAI-MP-250-0-RIGHT	2	AGCGTCTACGCTGCAGTCC
H5 HPAI-MP-250-6-LEFT	2	AAACGGATGGGAGTGCAAC
H5 HPAI-MP-250-6-RIGHT	2	ATATACGCGTAGTAGAAACAAGGTAG
H5 HPAI-NS-250-0-LEFT	2	ATATACGCGTAGCRAAAGCAGGGTGACA
H5 HPAI-NS-250-0-RIGHT	2	TCGTCGGATTCTTCTCCAGAATC
H5 HPAI-NS-250-5-LEFT	1	TACAGAGATTCGCTTGGAGAAGC
H5 HPAI-NS-250-5-RIGHT	1	ATATACGCGTAGTAGAAACAAGGGTGTT

**S3 Table: Full results from RT-qPCR testing.**

carton	date purchased	date expiration	average cycle threshold	primer set	processing plant state
dholab carton 0001	4/24/24	5/8/24		M gene	IA
dholab carton 0002	4/24/24	5/1/24		M gene	IA
dholab carton 0003	4/24/24	6/5/24		M gene	MN
dholab carton 0004	4/24/24	5/30/24		M gene	MN
dholab carton 0005	4/24/24	6/20/24	32.435	M gene	CO
dholab carton 0006	4/24/24	5/19/24	33.055	M gene	CO
dholab carton 0007	4/24/24	5/8/24		M gene	WI
dholab carton 0008	4/24/24	5/8/24		M gene	WI
dholab carton 0009	4/24/24	5/2/24		M gene	WI
dholab carton 0010	4/24/24	5/1/24		M gene	IA
dholab carton 0011	4/24/24	5/1/24		M gene	IA
dholab carton 0012	4/24/24	5/2/24		M gene	WI
dholab carton 0013	4/24/24	5/7/24		M gene	WI
dholab carton 0014	4/24/24			M gene	IA
dholab carton 0015	4/26/24			M gene	WI
dholab carton 0016	5/2/24	5/17/24		M gene	VA
dholab carton 0017	5/2/24	6/6/24		M gene	NY
dholab carton 0018	5/2/24	6/4/24		M gene	OH
dholab carton 0019	5/2/24	6/17/24	33.52	M gene	KY
dholab carton 0020	5/2/24	6/27/24		M gene	CO
dholab carton 0021	5/2/24	6/4/24	31.17	M gene	TX
dholab carton 0022	5/2/24	5/16/24		M gene	UT
dholab carton 0023	5/2/24	5/30/24		M gene	IN
dholab carton 0024	5/2/24	7/11/24	26.29	M gene	MI
dholab carton 0005	4/24/24	6/20/24	31.34	M gene	CO
dholab carton 0020	5/2/24	6/27/24		H5-specific	CO
dholab carton 0005	4/24/24	6/20/24	32.205	H5-specific	CO
dholab carton 0024	5/2/24	7/11/24	27.365	H5-specific	MI

dholab carton 0025	5/20/24	7/29/24		H5-specific	ID
dholab carton 0026	5/20/24	7/2/24		H5-specific	KY
dholab carton 0027	5/20/24	7/27/24	38.435	H5-specific	IN
dholab carton 0028	5/20/24	7/12/24	68.48	H5-specific	KS
dholab carton 0029	5/20/24	6/21/24		H5-specific	FL
dholab carton 0030	5/20/24	8/12/24		H5-specific	MI
dholab carton 0031	5/20/24	11/18/24		H5-specific	MO
dholab carton 0032	5/20/24	6/5/24		H5-specific	WI
dholab carton 0033	5/20/24	9/12/24	38.785	H5-specific	CO
dholab carton 0034	5/20/24	6/24/24		H5-specific	NC
dholab carton 0035	5/20/24	7/4/24		H5-specific	CA
dholab carton 0036	5/20/24	7/8/24	36.79	H5-specific	CO
dholab carton 0037	5/20/24	6/30/24		H5-specific	NY
dholab carton 0038	5/20/24	6/20/24		H5-specific	OR
dholab carton 0039	5/20/24	6/11/24		H5-specific	OH
dholab carton 0041	5/10/24		35.905	H5-specific	MI
dholab carton 0042	5/10/24			H5-specific	MI
dholab carton 0024	5/2/24	7/11/24	28.03	H5-specific	MI
dholab carton 0043	6/5/24	6/23/24		H5-specific	MN
dholab carton 0044	6/5/24	6/13/24		H5-specific	WI
dholab carton 0045	6/5/24	6/11/24		H5-specific	IN
dholab carton 0046	6/5/24	8/16/24	31.71	H5-specific	CO
dholab carton 0047	6/5/24	6/6/24		H5-specific	MI
dholab carton 0048	6/5/24	8/22/24	33.535	H5-specific	MI
dholab carton 0049	6/5/24	6/13/24		H5-specific	IA
dholab carton 0050	6/5/24	6/1/24		H5-specific	IL
dholab carton 0051	6/5/24	6/10/24		H5-specific	IL
dholab carton 0052	6/5/24	6/18/24		H5-specific	WI
dholab carton 0053	6/5/24	6/28/24		H5-specific	IN
dholab carton 0054	6/5/24	6/22/24		H5-specific	TX
dholab carton 0055	6/5/24	6/20/24		H5-specific	WI
dholab carton 0056	6/5/24	6/18/24		H5-specific	WI
dholab carton 0057	6/17/24	7/31/24		H5-specific	MN
dholab carton 0058	6/17/24	7/8/24		H5-specific	IN
dholab carton 0059	6/17/24	6/25/24		H5-specific	WI
dholab carton 0060	6/17/24	7/3/24		H5-specific	WI
dholab carton 0061	6/17/24	6/18/24		H5-specific	WI
dholab carton 0062	6/17/24	7/3/24		H5-specific	WI
dholab carton 0063	6/17/24	8/29/24	33	H5-specific	MI
dholab carton 0064	6/17/24	7/15/24		H5-specific	IL
dholab carton 0065	6/17/24	8/23/24	29.89	H5-specific	CO
dholab carton 0066	6/17/24	7/1/24		H5-specific	IA

dholab carton 0067	6/17/24	7/22/24		H5-specific	KY
--------------------	---------	---------	--	-------------	----

**S4 Table: SRA Accession numbers for sequences produced in this study.**

Sample Name	SRA Accession
Carton 05	SRR31094760
Carton 06	SRR31094759
Carton 21	SRR31094758
Carton 24	SRR31094757
Carton 33	SRR31094756
Carton 36	SRR31094755
Carton 46	SRR31094754
Carton 48	SRR31094753
Carton 63	SRR31094752
Carton 65	SRR31094751

**S5 Table: Acknowledgement to sequence contributors in Nextclade.**

Author	sequences
Nguyen,T., Hutter,C., Markin,A., Thomas,M., Lantz,K., Killian,M.L., Janzen,G.M., Vijendran,S., Wagle,S., Inderski,B., Magstadt,D.R., Li,G., Diel,D.G., Frye,E.A., Dimitrov,K.M., Swinford,A.K., Thompson,A.C., Snevik,K.R., Suarez,D.L., Spackman,E., Lakin,S.M., C,S., Johnson,K.R., Baker,A.L., Robbe-Austerman,S., Torchetti,M.K., Anderson,T.K., Anderson,T.	228
Aufderhar,M., Franzen,K., Killian,M.L., Lantz,K., Stuber,T., Hicks,J., Norris,C., Lakin,S.	261
Kirby,M., Sheffield,S., Liddell,J., Frederick,J.C., Di,H., Lacey,K., Presley,S.M., Reinoso Webb,C., Malaeb,S., Cofi,M., Davis,T., Garten,R., Steel,J., Pusch,E., Barnes,J., Dugan,V., Garten,R.R.	1
Aufderhar,M., Franzen,K., Killian,M., Lantz,K., Stuber,T., Hicks,J., Norris,C., Lakin,S.	575
?	388
Guan,L., Einfeld,A.J., Pattinson,D., Gu,C., Biswas,A., Maemura,T., Trifkovic,S., Babujee,L., Presler,R. Jr., Dahn,R., Halfmann,P.J., Barnhardt,T., Neumann,G., Thompson,A., Swinford,A.K., Dimitrov,K.M., Poulsen,K., Kawaoka,Y., Presler,R.	9
Hicks,J.A., Stuber,T., Norris,C., Lakin,S., Killian,M.L., Franzen,K., Aufderhar,M.	31
Norris,C., Tod,S., Jessica,H., Matthew,A., Kerrie,F., Mary,K., Steven,L., Kris,L.	63
Messer,K., Gnirke,A., McMahon,K., Gomez,M., Stetson,L., Stachler,E., Hill,T., Hill,S., Knoll,H., Curtis,E., Samani,P., Wewior,N., Vuyk,W., O'Connor,D., Brown,C., Madoff,L., Wohl,S., Ozonoff,A., Park,D., MacInnis,B., Sabeti,P.	19
Halwe,N.J., Cool,K., Breithaupt,A., Schon,J., Trujillo,J.D., Nooruzzaman,M., Kwon,T., Ahrens,A.K., Britzke,T., McDowell,C.D., Piesche,R., Singh,G., Pinho dos Reis,V., Kafle,S., Pohlmann,A., Gaudreault,N., Corleis,B., Matias Ferreyra,F., Carossino,M., Balasuriya,U.B.R., Hensley,L., Morozov,I., Covalada,L.M., Diel,D., Ulrich,L., Hoffmann,D., Beer,M., Richt,J.A.	1
Halwe,N.J., Ulrich,L., Schoen,J., Piesche,R., Britzke,T., Ahrens,A.K., Pinho dos Reis,V., Grund,C., Pohlmann,A., Breithaupt,A., Hoffmann,D., Beer,M., Harder,T.	1
Fabrizio,T.P., Kieffer,J.D., Franks,J., Jeevan,T., Kandeil,A., Walker,D., DeBeauchamp,J., Lowe,J.F., Bowman,A.S., Webby,R.J.	17
Barnes,J., Steel,J., Garten,R., Davis,T., Dugan,V., Riner,D.A., Soehnen,M., Dover,M., Kirby,M.K., Sheffield,S., Liddell,J., Frederick,J.C., Di,H., Pusch,E., De La Cruz,J., Lacey,K.A.	1
Fabrizio,T.P., Kieffer,J.D., Franks,J., Jeevan,T., DeBeauchamp,J., Lowe,J.F., Bowman,A.S., Webby,R.J.	3
Roychoudhury,P., Han,P., Kong,K., Xie,H., Gamboa,L., Rodriguez-Salas,L., Ellis,S.E., Greninger,A., Bedford,T., Starita,L., Chu,H.	1

Suarez,D.L., Goraichuk,I.V., Killmaster,L., Spackman,E., Clausen,N.J., Colonus,T.J., Leonard,C.L., Metz,M.L.	1
Nguyen,T., C,C., Markin,A., Thomas,M., Lantz,K., Killian,M.L., Janzen,G.M., Vijendran,S., Wagle,S., Inderski,B., Magstadt,D.R., Li,G., Diel,D.G., Frye,E.A., Dimitrov,K.M., Swinford,A.K., Thompson,A.C., Snevik,K.R., Suarez,D.L., Spackman,E., Lakin,S.M., C,S., Johnson,K.R., Baker,A.L., Robbe-Austerman,S., Torchetti,M.K., Anderson,T.K., Anderson,T.	1
Burrough,E.R., Magstadt,D.R., Petersen,B., Timmermans,S.J., Gauger,P.C., Zhang,J., Siepker,C., Mainenti,M., Li,G., Thompson,A.C., Gorden,P.J., Plummer,P.J., Main,R., Hu,X.	4
Kirby,M.K., Steel,J., Garten,R., Davis,T., Dugan,V., Wilson,M., Liddell,J., Frederick,J.C., Di,H., Radford,K., De La Cruz,J., Keong,L., Lacek,K.A., Shu,B., Lopez,D., Seliskar,L., Le,H., Cadiz,V., Hua,C., Hok,S., Millena,S.	1
Kirby,M.K., Steel,J., Garten,R., Davis,T., Dugan,V., DaSilva,J., Liddell,J., Frederick,J.C., Di,H., Sheffield,S., Radford,K., De La Cruz,J., Keong,L., Lacek,K.A., Shu,B., Lopez,D., Seliskar,L., Le,H., Cadiz,V., Hua,C., Hok,S., Millena,S.	4
Kirby,M.K., Steel,J., Garten,R., Davis,T., Dugan,V., Sheffield,S., Liddell,J., Frederick,J.C., Di,H., Radford,K., De La Cruz,J., Keong,L., Lacek,K.A., Shu,B., Lopez,D., Seliskar,L., Le,H., Cadiz,V., Hua,C., Hok,S., Millena,S.	1
Oguzie,J.U., Marushchak,L.V., Shittu,I., Lednicky,J.A., Miller,A.L., Hao,H., Nelson,M.I., Gray,G.C., Rodriguez,A.	1
Shittu,I., Silva,D., Oguzie,J.U., Marushchak,L.V., Olinger,G., Lednicky,J.A., Trujillo-Vargas,C.M., Schneider,N.E., Hao,H., Gray,G.C.	4
Singh,G., Trujillo,J.D., Mcdowell,C., Fitz,I., Noll,L., Gaudreault,N., Retallick,J., Richt,J.	1
Barnes,J., Steel,J., Garten,R., Davis,T., Dugan,V., Matzinger,S.R., Kirby,M.K., Sheffield,S., Liddell,J., Frederick,J.C., Di,H., Pusch,E., De La Cruz,J., Keong,L., Lacek,K.A.	4