

Use of semaglutide and risk of non-arteritic anterior ischemic optic neuropathy: A Danish–Norwegian cohort study

SUPPLEMENTARY MATERIAL

Emma Simonsen¹ MD
Lars Christian Lund¹ MD PhD
Martin Thomsen Ernst¹ MSc
Vidar Hjellvik² PhD
Laszlo Hegedüs^{3,4} MD DMSc
Steffen Hamann^{5,6} MD PhD
Øystein Kalsnes Jørstad⁷ MD PhD
Hanne Løvdal Gulseth² MD PhD
Øystein Karlstad² MSc PhD
Anton Pottegård¹ MSc PhD DMSc

- (1) Clinical Pharmacology, Pharmacy, and Environmental Medicine, Department of Public health, University of Southern Denmark, Odense, Denmark
- (2) Department of Chronic Diseases, Norwegian Institute of Public Health, Oslo, Norway
- (3) Department of Endocrinology, Odense University Hospital, Odense, Denmark
- (4) Department of Regional Health Research, University of Southern Denmark, Odense, Denmark
- (5) Department of Ophthalmology, Copenhagen University Hospital - Rigshospitalet, Copenhagen, Denmark
- (6) Department of Clinical Medicine, University of Copenhagen, Copenhagen, Denmark
- (7) Department of Ophthalmology, Oslo University Hospital, Oslo, Norway and Faculty of Medicine, University of Oslo, Oslo, Norway

Correspondence

Anton Pottegård
Professor
Clinical Pharmacology, Pharmacy
and Environmental Medicine
University of Southern Denmark
Campusvej 55
DK-5230 Odense M, Denmark
E-mail: apottegaard@health.sdu.dk
Phone: 0045 28913340
ORCID: 0000-0001-9314-5679

Table S1 Baseline characteristics for new users of semaglutide and sodium-glucose co-transporter 2 inhibitors in Denmark before and after standardized mortality ratio weighting

	Unweighted cohort		SMD	SMR-weighted population		SMD
	Semaglutide <i>n</i> = 44517	SGLT-2is <i>n</i> = 84814		Semaglutide <i>n</i> = 44027	SGLT-2is <i>n</i> = 44076	
Male sex	24283 (55)	53943 (64)	0.18	24012 (55)	24079 (55)	<0.01
Age, years			0.39			0.05
<50	9139 (21)	9271 (11)		9045 (21)	9648 (22)	
50-64	18135 (41)	28909 (34)		17930 (41)	17411 (40)	
65-79	14780 (33)	36152 (43)		14619 (33)	14232 (32)	
80+	2463 (5.5)	10482 (12)		2434 (5.5)	2785 (6.3)	
Diagnoses						
Cerebrovascular disease	2499 (5.6)	6170 (7.3)	0.07	2470 (5.6)	2518 (5.7)	<0.01
Heart failure	1781 (4.0)	8440 (10)	0.24	1759 (4.0)	1787 (4.1)	<0.01
Obesity	9375 (21)	8743 (10)	0.30	9274 (21)	9513 (22)	0.01
Ischemic heart disease	5403 (12)	15169 (18)	0.16	5337 (12)	5394 (12)	<0.01
Neurological complications	1928 (4.3)	3603 (4.3)	<0.01	1909 (4.3)	1957 (4.4)	0.01
Peripheral vascular disease	2242 (5.0)	5218 (6.2)	0.05	2219 (5.0)	2277 (5.2)	0.01
Markers of alcohol abuse	1448 (3.3)	2754 (3.3)	<0.01	1434 (3.3)	1454 (3.3)	<0.01
Markers of smoking	1524 (3.4)	2644 (3.1)	0.02	1507 (3.4)	1533 (3.5)	<0.01
Renal complications	7274 (16)	18169 (21)	0.13	71912 (16)	7390 (17)	0.01
Eye complications	2526 (5.7)	4648 (5.5)	0.01	2494 (5.7)	2574 (5.8)	0.01
Medications						
Statins	28913 (65)	61482 (72)	0.16	28589 (65)	28791 (65)	0.01
Anticoagulants	4436 (10)	12337 (15)	0.14	4388 (10)	4389 (10)	<0.01
Antiplatelets	10332 (23)	25778 (30)	0.16	10204 (23)	10285 (23)	<0.01
ACEi/ARB	27201 (61)	56125 (66)	0.11	26916 (61)	27020 (61)	<0.01
Amiodaron	207 (0.46)	744 (0.88)	0.05	204 (0.46)	205 (0.47)	<0.01
Phosphodiesterase-5 inhibitors	2989 (6.7)	6106 (7.2)	0.02	2951 (6.7)	2929 (6.7)	<0.01
Prescriber type			0.14			0.03
GP	38548 (87)	70860 (84)		38135 (87)	38409 (87)	
Hospital	4715 (11)	12520 (15)		4658 (11)	4465 (10)	
Private practices	355 (0.80)	489 (0.58)		351 (0.80)	255 (0.58)	
Unknown	899 (2.0)	945 (1.1)		882 (2.0)	947 (2.2)	
Year of initiation			0.31			0.21
2018	1085 (2.4)	3875 (4.6)		1067 (2.4)	1193 (2.7)	
2019	4759 (11)	10644 (13)		4653 (11)	4397 (10)	
2020	6730 (15)	12016 (14)		6642 (15)	7290 (17)	
2021	8978 (20)	14879 (18)		8891 (20)	10738 (24)	
2022	10511 (24)	16545 (20)		10407 (24)	10308 (23)	
2023	10616 (24)	17594 (21)		10541 (24)	7384 (17)	
2024	1838 (4.1)	9261 (11)		1826 (4.2)	2766 (6.3)	

Table S2 Baseline characteristics for new users of semaglutide and sodium-glucose co-transporter 2 inhibitors in Norway before and after standardized mortality ratio weighting

	Unweighted cohort			SMR-weighted population		
	Semaglutide <i>n</i> = 16860	SGLT-2is <i>n</i> = 34153	SMD	Semaglutide <i>n</i> = 16860.00	SGLT-2is <i>n</i> = 16685.28	SMD
Male sex	9099 (54)	22395 (66)	0.24	9099 (54)	9137 (55)	0.02
Age, years			0.39			0.05
<50	3992 (24)	4485 (13)		3992 (24)	4099 (25)	
50-64	7244 (43)	12708 (37)		7244 (43)	6802 (41)	
65-79	4964 (29)	13943 (41)		4964 (29)	5000 (30)	
80+	660 (3.9)	3017 (8.8)		660 (3.9)	784 (4.7)	
Diagnoses						
Cerebrovascular disease	838 (5.0)	2365 (6.9)	0.08	838 (5.0)	879 (5.3)	0.01
Heart failure	848 (5.0)	4124 (12)	0.25	848 (5.0)	883 (5.3)	0.01
Obesity	3711 (22)	2983 (8.7)	0.37	3711 (22)	3670 (22)	<0.01
Ischemic heart disease	2743 (16)	9434 (28)	0.28	2743 (17)	2781 (17)	0.01
Neurological complications	916 (5.4)	1801 (5.3)	0.01	916 (5.4)	989 (5.9)	0.02
Peripheral vascular disease	1058 (6.3)	2782 (8.2)	0.07	1058 (6.3)	1140 (6.8)	0.02
Markers of alcohol abuse	379 (2.3)	646 (1.9)	0.03	379 (2.3)	380 (2.3)	<0.01
Markers of smoking	203 (1.2)	348 (1.0)	0.02	203 (1.2)	207 (1.2)	<0.01
Renal complications	1643 (9.7)	3150 (9.2)	0.02	1643 (9.7)	1836 (11)	0.04
Eye complications	2698 (16)	5932 (17)	0.04	2698 (16)	2785 (17)	0.02
Medications						
Statins	8962 (53)	20893 (61)	0.16	8962 (53)	9108 (55)	0.03
Anticoagulants	1712 (10)	4866 (14)	0.13	1712 (10)	1717 (10)	<0.01
Antiplatelets	4421 (26)	12286 (36)	0.21	4421 (26)	4520 (27)	0.02
ACEi/ARB	9075 (54)	19736 (58)	0.08	9075 (54)	9134 (55)	0.02
Amiodaron	69 (0.41)	341 (1.0)	0.07	69 (0.41)	70 (0.42)	<0.01
Phosphodiesterase-5 inhibitors*	-	-		-	-	
Year of initiation			0.67			0.17
2018	6 (0.04)	2570 (7.5)		6 (0.04)	207 (1.2)	
2019	1754 (10)	8386 (25)		1754 (10)	1432 (8.6)	
2020	3594 (21)	9062 (27)		3594 (21)	3973 (24)	
2021	7919 (47)	10209 (30)		7919 (47)	7696 (46)	
2022	3587 (21)	3926 (12)		3587 (21)	3378 (20)	

* Not available in Norwegian dataset

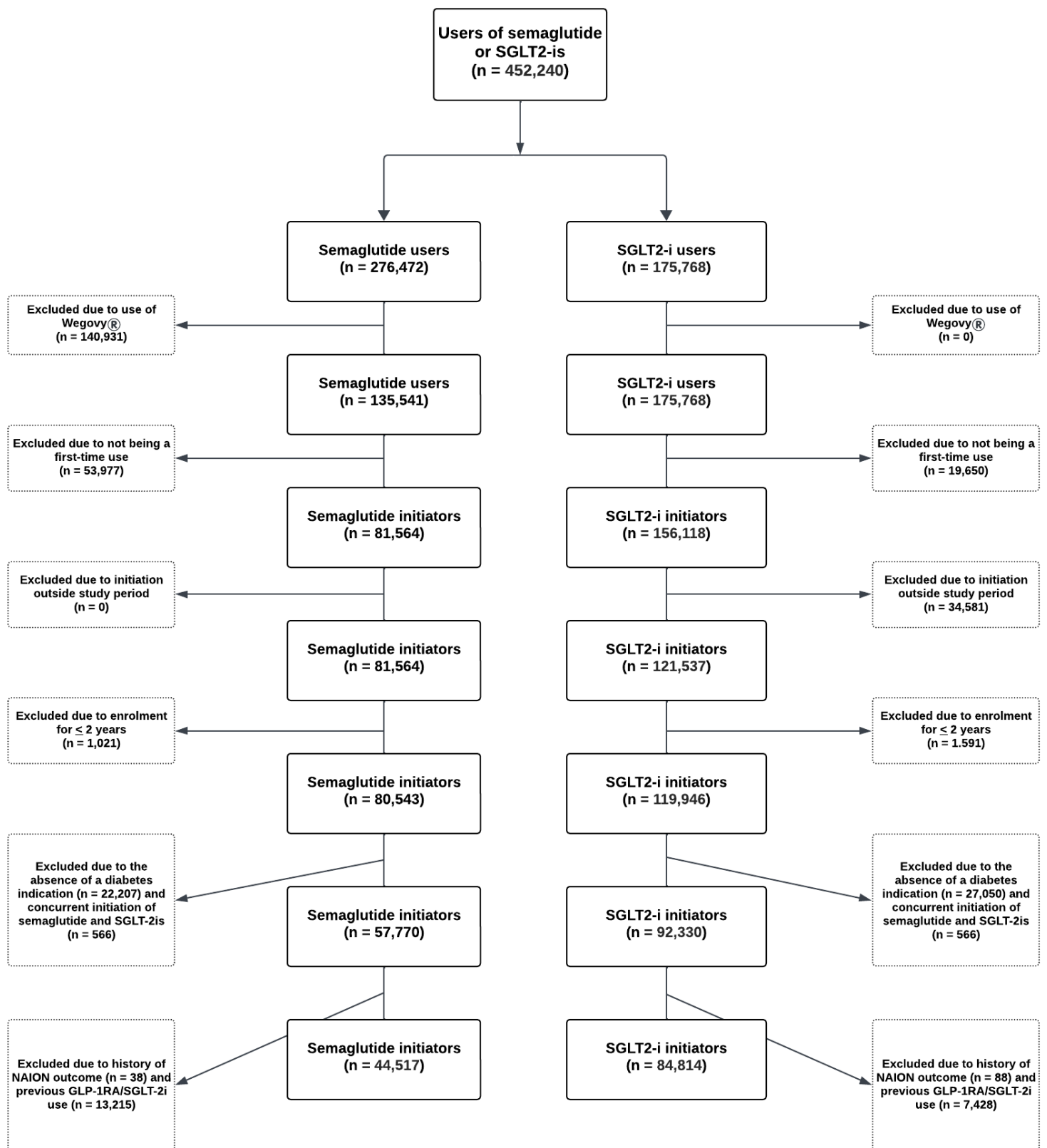
Table S3 Rates of non-arteritic anterior ischemic optic neuropathy among semaglutide initiators compared to sodium-glucose co-transporter 2 inhibitors initiators for Denmark and Norway and pooled incidence rate differences (measure of absolute effect size) and hazard ratios (measure of relative effect size) with two-year follow-up (intention-to-treat approach)

	Incidence rate per 10,000 py (events)		Hazard ratio (95% CI)	Pooled IRD per 10,000 py (95% CI)	Pooled hazard ratio (95% CI)
	Semaglutide	SGLT-2is			
Crude estimates					
Denmark	1.64 (12)	0.47 (6)	3.48 (1.31–9.28)	1.32 (0.40–2.24)	3.43 (1.63–7.25)
Norway	2.91 (7)	0.89 (5)	3.37 (1.06–10.7)		
Adjusted estimates ^a					
Denmark	1.64 (12.0)	0.39 (2.8)	4.19 (1.53–11.5)	1.47 (0.57–2.36)	5.36 (2.42–11.8)
Norway	2.91 (7.0)	0.37 (0.9)	7.98 (2.21–28.8)		

Abbreviations: CI, confidence interval; IRD, incidence rate difference; SGLT-2is, sodium-glucose co-transporter 2 inhibitors; py, person-years

^a adjusted estimates obtained in an standardized mortality ratio weighted pseudo-population

Supplementary Figure S1 Flowchart of cohort selection for Denmark



Supplementary Figure S1 Flowchart of cohort selection for Norway

