

1 ***Potential health and cost impacts of a point-of-care test for neonatal sepsis and possible***
2 ***serious bacterial infections in infants: a modeling analysis in two settings***

3

4 **Authors:** Joshua M Chevalier* (a), Megan A Hansen* (a), Kyra H Grantz (a, b), Birgitta
5 Gleeson (b), Benjamin Blumel (b), Veronicah Chuchu (b), Shaukat Khan (b), Ntombi Sigwebela
6 (c), Gwendoline Chimhini (d), Felicity Fitzgerald (e), Cecilia Ferreyra† (b), Brooke E Nichols†
7 (a, b, f)

8

9 **Affiliations:**

- 10 a. Department of Global Health, Amsterdam Institute for Global Health and Development,
11 Amsterdam UMC, University of Amsterdam, Amsterdam, Netherlands
12 b. FIND, Geneva, Switzerland
13 c. FIND, Cape Town, South Africa
14 d. Department of Child Adolescent and Women’s Health, Faculty of Medicine and Health
15 Sciences, University of Zimbabwe, Harare, Zimbabwe
16 e. Department of Infectious Diseases, Imperial College London, London, United Kingdom
17 f. Department of Global Health, Boston University School of Public Health, Boston, MA,
18 USA

19

20 Correspondence: BE Nichols – brooken@bu.edu

21

22 *Equal contribution

23 †Equal contribution

24 **Abstract:**

25

26 ***Introduction***

27 Sepsis accounts for up to 50% of neonatal deaths in resource-limited countries. Accurate and
28 timely diagnosis could improve clinical outcomes, reduce inappropriate antibiotic use, and
29 provide healthcare cost savings. We aimed to identify the minimum technical specifications and
30 cost required of a point-of-care test (POCT) for neonatal sepsis to be clinically useful in hospital
31 and community levels in low-resource settings.

32

33 ***Methods***

34 We modeled the diagnosis and treatment of two cohorts: hospitalized neonates and infants
35 presenting to primary health care facilities with suspected sepsis. We compared health outcomes,
36 including mortality, length of hospital stays, and acquisition of healthcare-associated infections
37 (HAIs), under a POCT compared to empiric treatment and blood culture across varying test
38 performance, prevalence of bacterial infection and discharge eligibility. A threshold health
39 economic analysis was performed to determine the allowable POCT price to remain cost neutral
40 to the healthcare system.

41

42 ***Results***

43 A POCT could lead to a net reduction in neonatal deaths at both the hospital level (up to 19% of
44 deaths averted compared to baseline) and community level (up to 76% deaths averted) through
45 faster initiation of appropriate therapy and reducing unnecessary hospitalizations and HAIs.
46 Healthcare costs could be reduced substantially with implementation of a POCT (17%–43% of
47 baseline costs saved in hospital and 48%–81% saved in primary healthcare settings across the
48 range of analyzed scenarios), suggesting a POCT costing up to \$21 in hospitals and \$3 in
49 community settings could be cost neutral.

50

51 ***Conclusions***

52 A POCT for neonatal sepsis, even with imperfect accuracy, could substantially improve clinical
53 outcomes by improving time to diagnosis, while also supporting antibiotic de-escalation and
54 stewardship and lowering healthcare costs. However, high clinical sensitivity is required to avoid
55 causing deaths through missed diagnoses due to false negative results and delayed antibiotic
56 initiation.

57 **Key Questions**

58

59 ***What is already known on this topic?***

60 It is known that neonatal sepsis and possible serious bacterial infections in infants are a serious
61 cause of mortality; however, diagnosis to provide proper treatment and care remains difficult.

62

63 ***What does this study add?***

64 This study generates evidence on what the technical specifications and costs are required of a
65 novel point-of-care test through mathematical modeling.

66

67 ***How might this study affect research, practice, or policy?***

68 These results can be used as criteria to guide the development of a novel point-of-care test for
69 neonatal sepsis and bacterial infection in infants.

70

71 **Introduction**

72
73 Sepsis is a significant cause of neonatal (0–28 days-old) mortality worldwide, accounting for
74 7.3% of all neonatal deaths(1). Low- and middle-income countries with limited resources bear a
75 disproportionate burden of neonatal sepsis, with infections presenting both in hospital and
76 primary health care (PHC) settings (2).

77
78 Diagnosing neonatal sepsis is difficult due to nonspecific symptoms (fever, vomiting, irritability,
79 etc.) and a lack of readily available, easy-to-use diagnostic tests. Diagnostic testing is particularly
80 challenging in resource-limited settings, as many lack laboratory infrastructure to routinely
81 perform blood culture as a first step in the etiologic diagnosis and treatment of sepsis (3,4).
82 Microbiology services, including culture and antibiotic susceptibility testing, are typically only
83 available at higher-level facilities (5). Even where microbiology services are available, the
84 challenge of sufficient blood-draw volume, long turnaround times, and poor quality pathogen
85 identification and antibiotic susceptibility testing can limit the clinical utility of test results (6).

86
87 Without timely and adequate diagnosis, hospitalized neonates or infants suspected of sepsis are
88 treated empirically with broad-spectrum antibiotics, potentially leading to overuse of antibiotics
89 and unnecessary hospitalization of those without bacterial infections. Antibiotic overuse in this
90 age group can lead to morbidity and mortality, especially in low birthweight or preterm
91 newborns, while also contributing to the growing concern of antimicrobial resistance (AMR)
92 (7,8). Continued hospitalization of otherwise healthy neonates puts them at risk of healthcare-
93 associated infections (HAIs) – a major cause of sepsis (9).

94
95 At the community level, there are often no diagnostic tools available for infants with possible
96 serious bacterial infections (pSBI) (10). Current standard practice for infants with critical illness
97 or clinical severe infection classifications of pSBI at a PHC facility is to provide a single dose of
98 antibiotics and referral to the nearest hospital with greater access to the necessary tools for care
99 (4,11). However, if referral is not feasible due to distance, cost, and/or time required, antibiotic
100 injections may be provided at the PHC level (12). This broad-scale treatment and referral to
101 higher-level care, even for infants without true bacterial infections, results in unnecessary
102 antibiotic use and hospitalization.

103
104 New diagnostic tools to identify sepsis and pSBI in neonates and infants could greatly improve
105 clinical management, guide referral decisions, and reduce misdiagnosis or unnecessary treatment
106 (4,13). A diagnostic tool, whether in the form of an algorithm or a point-of-care test (POCT) for
107 neonatal/infant sepsis must meet certain technical specifications (sensitivity, specificity) and a
108 realistic price to be clinically useful and feasible to implement (3,4). To better understand these
109 minimum diagnostic tool criteria and their impact on health-outcomes, we modeled the clinical
110 cascades of neonates born in a hospital and infants presenting at PHC facilities suspected of

111 sepsis using the current standard-of-care and using a POCT with same day results, similar to a
112 rapid diagnostic test. We then conducted a threshold health economic analysis to determine the
113 prices at which implementation of a POCT would be cost neutral to the health system. This
114 analysis provides important evidence to guide the development, implementation, and evaluation
115 of novel diagnostic tools for neonatal sepsis.

116

117 **Methods**

118

119 To evaluate the potential impact of a true POCT for neonatal sepsis, we modeled diagnosis and
120 clinical care of two cohorts with pSBI: 1) hospital-born neonates 0–28 days of age and 2)
121 0–59 days of age presenting for care at the PHC level. Both models are parameterized using data
122 from India and Uganda, where the best data are available, and lower-income multi-country
123 implementation studies (**Table 1**). Both models were built using R version 4.3.1, and analyses
124 were conducted using R and Microsoft Excel version 16.81. Since modeling methods were used,
125 patients or the public were not involved in the design, conduct, reporting, or dissemination plans
126 of our research.

127

128 ***Cohort 1: Hospitalized neonates***

129

130 The modeled population consisted of 1,000 hospital-born neonates suspected of sepsis due to risk
131 factors (early gestational age, low birthweight) or clinical signs indicative of sepsis (fever,
132 difficulty breathing, inconsistent heart rate). We varied the prevalence of true bacterial sepsis
133 (i.e., prevalence of culture-positive sepsis). AMR infections, which accounted for 50% of all
134 sepsis cases, were associated with a nearly doubled case fatality rate (CFR) compared to
135 antibiotic susceptible infections. Relevant population parameters are summarized in **Table 1**.
136 **Figure 1A** displays the testing and clinical care cascade of the modeled population.

137

138 Under the baseline standard-of-care, all neonates with suspected sepsis immediately received
139 empiric antibiotic therapy and had a blood culture sample taken. We assumed that not all
140 suspected cases in need of blood culture would receive it (due to resource limitations or
141 insufficient blood-draw volume), meaning blood culture could only be completed for a portion of
142 the cohort, with results returned after 48 hours. Under the POCT intervention, all neonates with
143 suspected sepsis were tested using the POCT, and only those with a positive result immediately
144 initiated antibiotics.

145

146 We considered varying proportions of neonates without true bacterial sepsis eligible for
147 discharge after clinical evaluation and a negative result (blood culture or POCT) to represent
148 well presenting neonates. Discharge eligibility ranged (23%, 35%, 58%) based on the number of
149 neonates discharged within two, three, or five days from a neonatal intensive care unit (NICU)
150 (14). We assumed neonates with a false negative result remained hospitalized based on their

151 clinical presentation and received additional diagnostic testing. This created a delay to antibiotic
152 therapy, resulting in two additional days spent in the hospital and a 47% increase in the CFR
153 (15,16). Neonates without a true bacterial infection who received antibiotic therapy from empiric
154 treatment or false positive results and remained hospitalized were at risk of antibiotic-related
155 morbidities and HAIs. Neonates with a true bacterial infection (true positive) had an average
156 hospital stay of 16 days, while neonates without infection (false positive) had an average stay of
157 seven days (14). Neonates who contracted an HAI spent an additional 11 days in the hospital, for
158 a total stay of 18 days (17).

159

160 *Cohort 2: Infants in primary health care facilities*

161

162 At the community level, a modeled population of 5,000 infants (0–59 days of age) presented to
163 PHC facilities with pSBI (**Table 1**). Infants presenting with illness were either referred to a
164 higher-level care facility or received treatment on-site. The three categories of pSBI used by the
165 World Health Organization (WHO) were included in the model (from greatest to least severity):
166 critical illness, clinical severe infection (characterized by presence of at least one sign of severe
167 infection), and fast breathing, defined as a respiratory rate >60 breaths/minute; modeled infants
168 were defined using these categories (11,18). Each category of pSBI had an assumed underlying
169 probability of true bacterial infection, which was varied in this analysis. Bacterial prevalence was
170 parameterized as lower in fast breathing infants and higher in critically ill infants, compared to
171 infants with clinical severe infection, reflecting how pSBI severity is correlated with true
172 bacterial infection (19).

173

174 Under the standard-of-care, per WHO guidelines, fast breathing infants 7–59 days of age were
175 treated on-site with oral amoxicillin, while infants with a clinical severe infection and critical
176 illness were referred to inpatient care with a pre-referral dose of antibiotics (10) (**Figure 1B**).
177 When referral was not feasible for infants with a clinical severe infection or critical illness, we
178 assumed they were treated on-site for up to seven days with WHO-recommended antibiotic
179 regimens. The probability of accepting referral to hospitalization (17%–90%) was varied to
180 reflect differently resourced contexts (11). CFRs for each category of pSBI were derived from
181 the literature (**Table 1**).

182

183 Using the POCT, all infants presenting with critical illness received a referral and a single dose
184 of antibiotics regardless of their POCT result, while all fast-breathing infants were treated on-site
185 without referral based on their POCT result. Infants presenting with a clinical severe infection
186 were only referred for higher-level care, with one dose of antibiotics, if their POCT result was
187 positive; otherwise, those with a negative POCT were monitored on-site. False positive infants
188 with clinical severe infection received referral and treatment, while false negatives had an
189 assumed four-hour delay to antibiotic initiation, leading to an increased CFR (13,17).

190

191 Upon referral acceptance, infants entered the hospital model (**Figure 1A**) without additional
192 testing with the POCT. An assumed proportion underwent standard blood culture testing, leading
193 to discharge or continued antibiotic therapy. Hospitalized infants without a true underlying
194 bacterial infection were at risk of HAIs, experiencing a higher CFR compared to community
195 borne infections. These CFRs differed from those in the hospital model because different clinical
196 populations considered in each model (**Table 1**). Discharge eligibility among community
197 referred infants without bacterial infection was held constant at 58%.

198

199 *Outcomes and Sensitivity Analysis*

200

201 Modeled outcomes included the number of neonatal or infant deaths, days spent hospitalized,
202 number of HAIs, number of accepted hospital referrals, and antibiotic-associated morbidities.
203 Diagnostic impact was quantified as the percent reduction in deaths and hospital days, and the
204 number of HAIs and antibiotic-associated morbidities prevented through POCT use.

205

206 Diagnostic impact was assessed across a range of POCT sensitivities (80%–100%) and
207 specificities (70%–100%). Several sensitivity analyses were performed to understand the
208 performance of the POCT across various settings. In addition to discharge eligibility and referral
209 acceptance, true bacterial prevalence was varied among pSBI cases (6%, 12%, 24%) and the risk
210 of contracting an HAI (5%–20%) during the entire length of stay in both models. In the
211 community level analysis, the CFR of HAIs was varied (12%, 29%).

212

213 *Economic Analysis*

214

215 A threshold health economic analysis was performed to determine the total costs of care at
216 baseline and with the POCT to determine at which price the POCT would be cost neutral to the
217 healthcare system. Total costs of inpatient care in India and Uganda, representing different
218 contexts, were gathered from the provider perspective and inflated to 2023 USD (21,22). The
219 estimated cost of treatment and care for a single day in a tertiary hospital in India was \$118 for
220 neonates with a true bacterial infection, and \$96 for those without (21). In Uganda, daily
221 hospitalization costs for true bacterial infection was \$39 and \$31 for neonates without infection
222 (23). Healthy infants did not contribute any additional costs upon discharge. The maximum
223 allowable cost for a POCT in a hospital setting was calculated by dividing hospitalization costs
224 saved by the new diagnostic by the total number of POCTs administered to achieve cost savings.

225

226 The maximum allowable cost of a POCT at PHCs was also determined using cost savings of
227 community management and antibiotics. Data from the literature estimates that the cost of one
228 course of oral amoxicillin at a PHC in India to cost \$1.29, and a single visit to a PHC facility to
229 cost \$1.88 (21,24). From the provider perspective, an infant outpatient visit to a hospital after
230 receiving a referral was estimated to be \$18.16 (24). Inpatient care costs at a hospital following

231 referral were the same as described above for the hospital model. Healthcare costs in Uganda
232 were used as a sensitivity analysis to represent other resource-limited settings, to identify how
233 the costs of healthcare in different settings may reflect the maximum allowable cost for a POCT
234 to remain cost neutral. In Uganda, community care and referral costs were reduced by 33% (23).
235 We also performed this economic analysis excluding infants with critical illness, as their POCT
236 results did not change clinical practice in the model.

237 **Table 1.** Model parameters for hospital and community settings. *CFR: Case Fatality Rate

Parameter	Value (%)
Hospital Model	
Prevalence of culture-positive sepsis among suspected cases (19,25)	
- <i>High</i>	23.6
- <i>Moderate</i>	11.8
- <i>Low</i>	5.9
Proportion of infections which are antimicrobial resistant (6)	49.96
Proportion of suspected cases receiving blood culture (19)	59.51
Blood culture sensitivity/specificity (26)	66.67/100
Probability of antibiotic-related morbidities among antibiotic-treated children (26)	27.71
Probability of acquiring hospital-associated infection during hospitalization among children without prior infection (27)	5, 10, 15, 20
CFR*, no infection (6)	8.78
CFR*, antibiotic susceptible infection (6)	29.00
CFR*, antimicrobial resistant infection (6)	54.51
CFR*, delayed antibiotic initiation (15)	68.16
CFR*, antibiotic-associated mortality (28)	0.88
Community Model	
Possible serious bacterial infection (11,12)	
- <i>Proportion fast breathing (11)</i>	38.72
- <i>Proportion clinical severe infection (11)</i>	53.94
- <i>Proportion critical illness (11)</i>	7.34
Bacterial prevalence (6,19,25)	
- <i>Weighted average (0.5x, 1.0x, 2.0x)</i>	5.2, 10.4, 20.8
- <i>Fast breathing (0.5x)</i>	3.0, 5.9, 11.8
- <i>Clinical severe infection (1x)</i>	5.9, 11.8, 23.6
- <i>Critical illness (2x)</i>	11.8, 23.6, 47.2
CFR* (community treated—pSBI) (11)	
- <i>Fast breathing</i>	0.10
- <i>Clinical severe infection</i>	1.90
- <i>Critical illness</i>	14.6
CFR* (hospital-treated) (11,19,29)	
- <i>Non-bacterial illness</i>	2.6
- <i>True bacterial infection</i>	11.5
- <i>Healthcare-associated infection</i>	12.0, 29.0
Referral acceptance (11,12)	17, 37, 69, 90

238

239 Results

240

241 *Health outcomes of hospitalized neonates following POCT implementation*

242

243 In the hospital cohort, all neonates suspected of sepsis received empiric antibiotic therapy and
244 60% received blood culture. Blood culture results led to 5%–13% of neonates without a true
245 infection to be discharged early, depending on underlying discharge eligibility (23%–58%). The
246 final mortality rate among neonates who had or developed infection was 41.7%.

247

248 When HAI risk was high (20% total risk), a POCT for neonatal sepsis in hospitals led to a net
249 reduction in neonatal deaths (0.3%–19.4% of deaths averted compared to baseline) at all test
250 sensitivities (80%–100%) and specificities (70%–100%) under the varying modeled proportions
251 of bacterial prevalence and discharge eligibility (**Figure 2B**). The percentage of neonatal deaths
252 prevented increased as POCT sensitivity increased, limiting false negatives and reducing delays
253 to antibiotic initiation for infected neonates.

254

255 The percentage of neonatal deaths prevented with a POCT was greater with lower levels of
256 underlying bacterial prevalence (6%) and larger proportions of neonates eligible for discharge
257 (58%). In these contexts, test specificity was particularly important to rule out infection among
258 otherwise well-presenting neonates. Increasing test specificity led to greater percent reductions in
259 HAIs due to earlier discharge of neonates without infection and greater reductions in antibiotic-
260 associated morbidities due to fewer false positive results (**Figure S1–S2**). The impact of the
261 POCT increased when HAI risk was higher (20% overall risk vs. 5%), as HAIs constituted 9%–
262 33% of total infection related deaths when risk was low versus 28%–66% when risk was high
263 (**Figure 2**).

264

265 Yet, in some contexts test sensitivity was the key driver of diagnostic impact. In settings with
266 low HAI risk (5%) and discharge eligibility (23%), but high bacterial prevalence (24%), excess
267 deaths occurred with the POCT compared to baseline (0.2%–1.6% relative increase) when
268 sensitivity was below 85% due to increasing false negative results and subsequent delays in
269 antibiotic therapy among infected neonates. With a test sensitivity of 85%, specificity greater
270 than 80% was required to avoid increases in mortality across all contexts (**Figure 2A**).

271

272 Earlier discharge leading to reduced HAI opportunity, resulted in a net reduction in hospital
273 days. The total number of hospital days was reduced by 8.2%–50.9% with POCT use (**Figure**
274 **S3**). The percent reduction in hospital days followed similar trends to neonatal deaths, with
275 respect to test specifications, discharge eligibility, and bacterial prevalence, but was not
276 significantly impacted by HAI risk.

277 *Health outcomes of community-presenting infants following POCT implementation*

278
279 In the modeled PHC cohort of 5,000 infants with pSBI, the proportion of infants correctly
280 referred at baseline (i.e., infants with true bacterial infection) varied from 17% to 33% as the
281 underlying bacterial prevalence increased (6%–24%). The proportion of correct referrals
282 increased from 17% at baseline to 38% upon POCT implementation with the lowest modeled test
283 specifications (80% sensitive, 70% specific) when bacterial prevalence was low and from 33% to
284 58% when bacterial prevalence was high (**Figure S4**). The relative impact of the POCT on
285 appropriate referrals largely relied on high test specificity which led to more correct referrals.

286
287 At baseline, 13–50 infant deaths occurred in PHC clinics and hospitals per 1,000 pSBI episodes
288 across all modeled scenarios (**Figure S5**). Mortality increased as underlying bacterial prevalence
289 and referral acceptance increased. Increasing referral acceptance led to increased hospital
290 admission of infants without bacterial infection, posing risk of HAIs. HAI deaths constituted
291 between 0.6%–44.7% of total deaths at baseline, depending on referral acceptance, bacterial
292 prevalence, HAI acquisition rate, and associated CFRs within the hospital setting (**Figure S6**).

293
294 A POCT to inform hospital referrals reduced total infant deaths, relative to baseline, when test
295 sensitivity and specificity were sufficiently high (**Figure 3**). At low levels of bacterial prevalence
296 and high levels of referral acceptance, and when HAI risk (20%) and mortality (29%) were high,
297 a POCT with high sensitivity and specificity could reduce infant deaths by up to 70% (**Figure**
298 **3B**). However, when sensitivity and specificity were low, there was an increase in deaths (3.5%–
299 48% more deaths compared to baseline) at lower levels of referral acceptance and higher levels
300 of bacterial prevalence. This was attributed to delayed antibiotic initiation associated with a false
301 negative POCT result causing poorer clinical outcomes. The range of scenarios in which deaths
302 increased was greater when HAI risk and mortality were low (5% and 12% respectively) (**Figure**
303 **3A**).

304
305 To limit the number of deaths caused by false negative results, a high sensitivity of at least 90%
306 could be combined with a lower specificity (70%) to reduce total infant deaths across most
307 scenarios. However, under the worst-case scenarios, test sensitivity ($\geq 98\%$) and specificity
308 ($\geq 95\%$) would need to be exceedingly high to avoid excess infant mortality.

309 *Sensitivity Analysis*

310
311
312 Univariate sensitivity analyses of parameters used in both the hospital and community models,
313 and their relationship with the number of infant deaths averted stratified by HAI risk are shown
314 in **Figure 4**. Sensitivity and specificity were held at 85% and 80% in the hospital model, and
315 90% and 70% in the community model, representing the identified necessary minimum
316 specifications to reduce mortality across most scenarios.

317
318 At the hospital level, increasing test specificity, prompting more accurate negative diagnoses,
319 drove the reduction in neonatal deaths by discharging earlier and reducing HAIs. HAI risk also
320 substantially influenced the potential reductions in mortality; when HAI risk was low, there was
321 less potential for the POCT to prevent deaths through reductions in unnecessary hospitalization.

322
323 At the community level, the probability of referral acceptance had an outsized influence on the
324 potential impact of a POCT, dictating the potential for accurate negative diagnoses with a POCT
325 to avert unnecessary hospitalization. Overall bacterial prevalence also shaped the impact of the
326 POCT, with greater potential impact when prevalence was lower (i.e., when there were more
327 healthy infants who benefitted from accurate non-referral).

328 329 *Economic Analysis*

330
331 POCT implementation among hospitalized neonates led to a reduction in hospitalization days
332 among the cohort (**Figure S7**), generating a 17%–43% reduction in total costs of treatment and
333 care at various levels of bacterial prevalence, proportion of neonates eligible for discharge, and
334 test sensitivity and specificity. Greater relative costs were saved when bacterial prevalence was
335 lower (6%) compared to when prevalence was higher (24%), indicating the benefits of the
336 diagnostic lie largely in identifying discharge-eligible neonates without infection (**Figure S8,**
337 **S9**). However, costs saved do not perfectly mirror trends in mortality shown in **Figure 2** since
338 higher mortality is associated with fewer days spent in the hospital and thus lower healthcare
339 costs.

340
341 Cost savings were even more considerable with the implementation of a POCT at the community
342 level, saving 48%–81% of total costs of follow-up and treatment compared to baseline by
343 limiting inappropriate referrals and hospitalization days. Since fewer inappropriate referrals
344 occurred at baseline when bacterial prevalence was low, there were more cost savings with
345 POCT implementation. Across all bacterial prevalence and proportions of infants eligible for
346 discharge, cost savings increased with better test performance (higher sensitivity and/or
347 specificity) (**Figure S10, S11**). Excluding infants with critical illness from the threshold analysis
348 allowed the median cost of a POCT to increase, from \$0.86–\$1 in India and \$0.28–\$0.33 in
349 Uganda, across varied scenarios compared to allowable POCT costs including infants with
350 critical illness (**Figure S12, S13**).

351
352 To ensure that this test is financially feasible to implement across all settings and range of
353 uncertainty, our analysis indicates that a globally acceptable POCT for neonatal sepsis in a
354 hospital setting should not exceed \$21 USD. Likewise, to ensure cost neutrality in the
355 community setting, the lowest of the costs saved per test administered (\$3) should be selected as
356 the optimal cost of the POCT at the PHC level (**Table S1, S2**). These results are reported

357 following the Consolidated Health Economic Evaluation Reporting Standards (CHEERS) (Table
358 S3).

359

360 Discussion

361

362 Implementation of a sufficiently accurate POCT for sepsis detection in neonates or infants at
363 hospital and community level facilities can reduce overall morbidity and mortality, while
364 remaining cost neutral when priced appropriately. Although the exact impact of a POCT heavily
365 depends on the specific use case implementation context, our modeling found that a test with at
366 least 85% sensitivity and 80% specificity for hospitalized neonates and 90% sensitivity and 70%
367 specificity for community-presenting infants is likely to reduce mortality.

368

369 If test sensitivity were to be lower than these values, deaths caused by missed diagnosis of true
370 sepsis cases and ensued delays in antibiotic initiation could lead to overall increases in mortality.
371 However, there were instances where tests of low sensitivity and high specificity, due to large
372 reductions in unnecessary hospitalization, antibiotic use, and HAI acquisition among uninfected
373 patients, could lead to declines in mortality and costs despite the increased number of false
374 negative diagnoses. While the overall benefits of a POCT may outweigh the consequences of
375 false negatives in these scenarios, a test sensitivity well above 80% should remain the diagnostic
376 criterion, with a sensitivity of 90% serving as an ideal standard. A POCT with a low sensitivity
377 would have limited utility in independently ruling out sepsis among neonates and infants.

378

379 Along with sensitivity, test specificity needs to be sufficiently high to reduce unnecessary
380 hospitalizations and HAIs. However, even a test with lower specificity will improve upon the
381 standard of care and can be tolerated in some contexts. In the hospital setting, a specificity of
382 80% combined with a sensitivity of 85% saw a net reduction in neonatal deaths. However, in the
383 community setting, 70% specificity with 90% sensitivity led to reduced infant deaths in most
384 scenarios, excluding contexts with low referral acceptance (17%) and high bacterial prevalence
385 (24%). Under these circumstances, even 100% specificity would be insufficient unless sensitivity
386 was 98%, principally speaking to the importance of evaluating contextual factors when
387 implementing a POCT.

388

389 Given the complexity in diagnosing sepsis in neonates and infants, it is likely that a POCT be
390 used as part of a diagnostic package, which may affect overall diagnostic impact and modify the
391 requirements and trade-offs between POCT sensitivity and specificity. Although a true POCT
392 may be difficult to develop, a near POCT may have reduced impact compared to our modeled
393 results by creating delays to test results. The POCT could be one component of a clinical
394 algorithm that includes signs, symptoms and risk factors, thereby reducing the required POCT
395 performance to achieve net benefits through the diagnostic algorithm. Additionally, we did not
396 consider the effect of positive POCT results on the timeliness to appropriate antibiotic initiation

397 and consequent potential improved health outcomes, compared to empiric therapy alone.
398 Therefore, the POCT could have benefits not captured in this analysis.

399
400 A key limitation of this analysis is that model parameters, assumptions, and costs were all
401 derived from tertiary hospital and PHC studies in India and Uganda, and thus may not perfectly
402 represent other resource-limited settings. For example, blood culture was assumed to be 100%
403 specific in diagnosing true negatives, but culture contamination is common in these settings,
404 thereby creating more false positive results, potentially altering health outcomes. Likewise, the
405 possibility of false negative results due to inadequate blood volume for optimal culture
406 performance is also a possibility that could impact our estimates. Additionally, the model
407 contains assumptions that may differ across the diverse environments where sepsis in neonates
408 and infants is common, including bacterial prevalence, resistance profiles, length of hospital stay,
409 and rates of HAIs. To account for this variability, several parameters were varied to improve
410 model sensitivity. While we expect relative differences between the POCT and baseline
411 standard-of-care to be consistent, these results should be interpreted with discretion as these
412 parameters continue to evolve with potential stock-outs of appropriate antibiotic treatment and
413 exponential growth of AMR in resource-limited settings.

414
415 Additionally, several simplifying assumptions regarding clinical management and outcomes
416 were made, which may not capture all the challenges of clinical pathways in diagnosing sepsis.
417 For example, infants may become lost to follow-up after PHC referral, incurring unknown health
418 outcomes and costs. Patients were functionally dichotomized into those who were being
419 appropriately treated with antibiotics and untreated; in reality, treatment of bacterial sepsis is
420 complex, and there are clinical benefits to continued refinement of antibiotic regimens that could
421 not be incorporated here. Similarly, there are other indirect and long-term benefits to
422 implementing POCTs that are not explicitly included in this model, including reductions in the
423 spread of AMR and preservation of first-line antibiotics in low-resource settings. Finally, we
424 assumed the POCT performed as intended with respect to sensitivity and specificity, but ignored
425 the possibility of invalid results, which may come with a new technology. Clarifying diagnostic
426 algorithms based on available and developing technologies, and the clinical management that
427 accompany them are a necessity for accurately costing these tools in the future.

428
429 This modeling analysis serves as a tool for understanding the necessary technical specifications,
430 which should be taken into consideration with other technical parameters (i.e., blood volume,
431 sample preparation guidelines, and time to result) that can be used to guide the development of a
432 POCT as an aid to diagnose sepsis in hospitalized neonates and community-presenting infants.
433 An accurate POCT could improve time to diagnosis and generate net reductions in hospital days,
434 HAIs, and deaths, while promoting the de-escalation of antimicrobials in resource-limited
435 settings. Our results displayed a critical trade-off between HAI-related deaths prevented and
436 those caused by a false-negative diagnosis, suggesting that a high sensitivity should be

437 prioritized over specificity to avoid potential delays in antibiotic initiation. Given the nature of
438 the settings in which the POCT will be used, its cost should not exceed \$21 in a hospital setting
439 and \$3 in a community setting.

440
441 Future research should focus on bridging the current gaps in data availability regarding the
442 occurrence and clinical management of sepsis in hospitals and community settings to generate
443 more robust and context-specific estimates of the impact of a POCT, and its downstream effect
444 on AMR. Urgent investments in diagnostics development are needed to accelerate access to
445 diagnostic solutions for the vulnerable populations most impacted by neonatal sepsis.

446 **Author Contributions**

447 Conceptualization: BG, CF, BEN. Data curation: JMC, MAH. Methodology: JMC, MAH, KHG,
448 SK, BEN. Formal analysis: JMC, MAH, KHG. Investigation: JMC, MAH, BG, BB VC, KHG.
449 Supervision: BG, CF, BB, SK, BEN, KHG. Writing – original draft: JMC, MAH. Writing –
450 review and editing: JMC, MAH, KHG, BG, BB, VC, SK, NS, GC, FF, CF, BEN.

451

452 **Acknowledgements**

453 Not applicable.

454

455 **Competing Interests**

456 FF is a trustee of Neotree, a UK registered charity that provides technology, software
457 information, education and support to newborn healthcare workers and medical practitioners in
458 low resource settings (charity number: 1186748). All other authors declare no conflict of interest.
459 The funders had no role in the design of the study, the collection, analyses, or interpretation of
460 data, the writing of the manuscript, or the decision to publish the results.

461

462 **Ethical Approval**

463 This research utilizes publicly available data from the literature; therefore, formal ethical
464 approval was not required. However, ethical considerations were included throughout the
465 research process as transparency was maintained in the reporting of our modeling methodology.
466 This statement affirms our commitment to ethical conduct in research, even in the absence of
467 formal approval.

468

469 **Data Availability Statement**

470 We acknowledge the importance of transparent and responsible data sharing to foster scientific
471 collaboration and advance research. All data used for this study are presented in the manuscript
472 and gathered from publicly available literature, and therefore do not necessitate any information
473 de-identification. For additional information, interested parties can contact JMC
474 (j.m.chevalier@amsterdamumc.nl) or MAH (m.hansen@amsterdamumc.nl).

475

476 **Funding**

477 This work was supported via FIND by the UK Department of Health and Social Care as part of
478 the Global AMR Innovation Fund (GAMRIF) and with support from the Ministry of Foreign
479 Affairs of the Government of the Netherlands. GAMRIF is a One Health UK aid fund that
480 supports research and development around the world to reduce the threat of antimicrobial
481 resistance in humans, animals and the environment for the benefit of people in low- and middle-
482 income countries (LMICs). The views expressed in this publication are those of the authors and
483 not necessarily those of the UK Department of Health and Social Care. FF is supported by a
484 Wellcome Trust Early Career Award (227076/Z/23/Z).

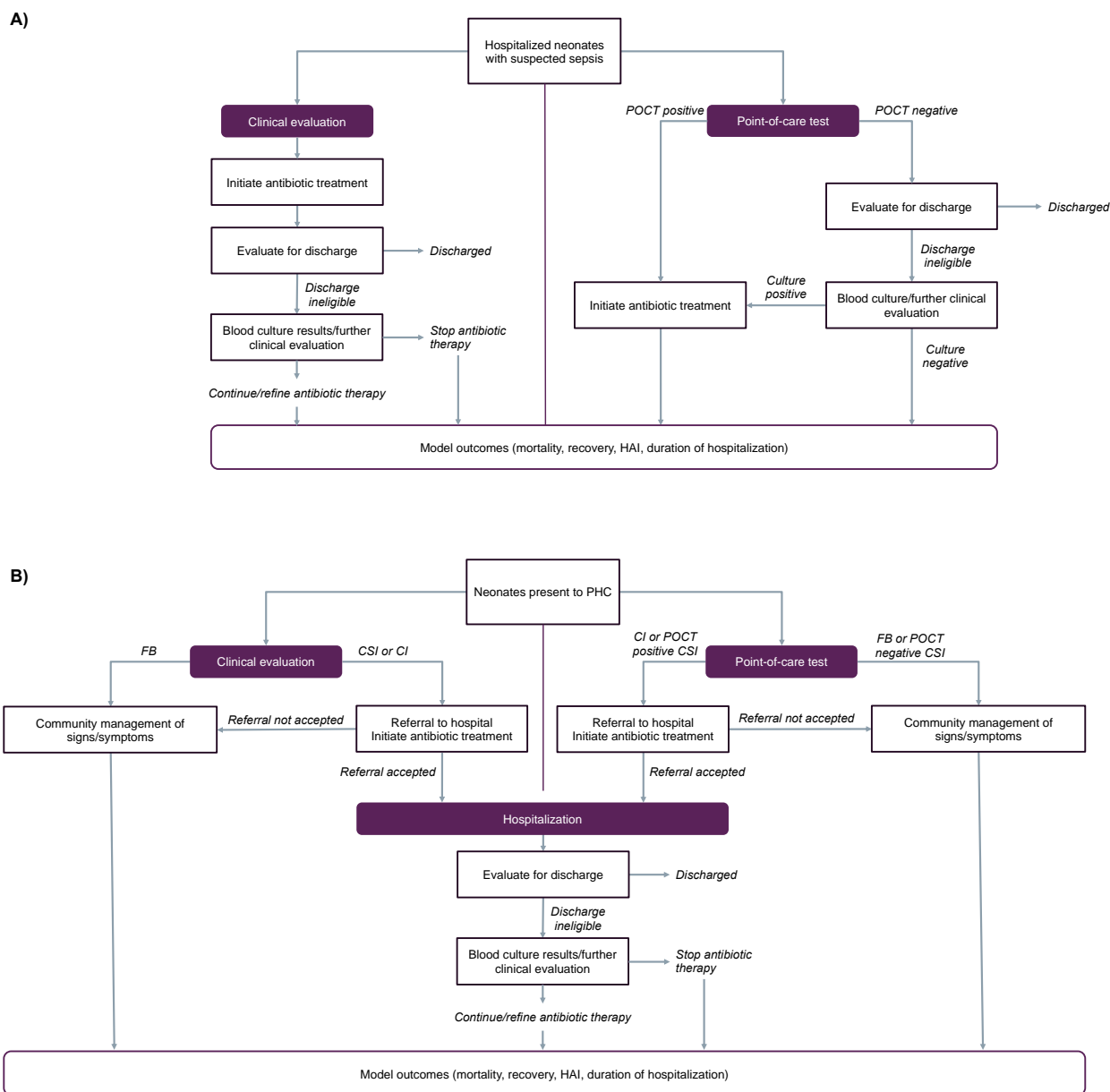
485 **References**

- 486 1. CME Info - Child Mortality Estimates [Internet]. [cited 2024 Oct 7]. Available from:
487 <https://childmortality.org/causes-of-death/data>
- 488 2. Fleischmann C, Reichert F, Cassini A, Horner R, Harder T, Markwart R, et al. Global
489 incidence and mortality of neonatal sepsis: A systematic review and meta-analysis. Vol. 106,
490 Archives of Disease in Childhood. BMJ Publishing Group; 2021. p. 745–52.
- 491 3. Adataro P, Afaya A, Salia SM, Afaya RA, Konlan KD, Agyabeng-Fandoh E, et al. Risk
492 Factors Associated with Neonatal Sepsis: A Case Study at a Specialist Hospital in Ghana. Sci
493 World J. 2019;2019.
- 494 4. Kirby R, Palamountain K, Spotswood N, Goldfarb D. Use Cases Sepsis Diagnostic - Infection
495 Prevention and Control [Internet]. Available from:
496 <https://www.unicef.org/supply/media/2946/file/sepsis-diagnostic-use-cases.pdf>
- 497 5. Ombelet S, Barbé B, Affolabi D, Ronat JB, Lompo P, Lunguya O, et al. Best Practices of
498 Blood Cultures in Low- and Middle-Income Countries. Vol. 6, Frontiers in Medicine.
499 Frontiers Media S.A.; 2019.
- 500 6. Agarwal R, Chaurasia S, Sankar MJ, Yadav CP, Arya S, Kapil A, et al. Characterisation and
501 antimicrobial resistance of sepsis pathogens in neonates born in tertiary care centres in Delhi,
502 India: a cohort study. Lancet Glob Health. 2016 Oct;4(10):e752–60.
- 503 7. Celik IH, Hanna M, Canpolat FE, Pammi M. Diagnosis of neonatal sepsis: the past, present
504 and future. Vol. 91, Pediatric Research. Springer Nature; 2022. p. 337–50.
- 505 8. Gude SS, Peddi NC, Vuppalapati S, Gopal SV, Ramesh HM, Gude SS. Biomarkers of
506 Neonatal Sepsis: From Being Mere Numbers to Becoming Guiding Diagnostics. Cureus. 2022
507 Mar;
- 508 9. Rani U, Lewis LE, Chawla K, Naha A. Preventable contributors to the neonatal healthcare-
509 associated infections: a uni-center analytical study from South India. F1000Research. 2022
510 Apr 25;11:454.
- 511 10. Organization WH. Operationalizing management of sick young infants with possible
512 serious bacterial infection (PSBI) when referral is not feasible in the context of existing
513 maternal, newborn, and child health programmes [Internet]. 2015. Available from:
514 <https://apps.who.int/iris/bitstream/handle/10665/259592/9789241512930-eng.pdf?sequence=1>
- 515 11. Nisar YB, Aboubaker S, Arifeen SE, Ariff S, Arora N, Awasthi S, et al. A multi-country
516 implementation research initiative to jump-start scale-up of outpatient management of
517 possible serious bacterial infections (PSBI) when a referral is not feasible: Summary findings
518 and implications for programs. PLoS ONE. 2022 Jun;17(6 June).
- 519 12. Roy S, Patil R, Apte A, Thibe K, Dhongade A, Pawar B, et al. Feasibility of
520 implementation of simplified management of young infants with possible serious bacterial

- 521 infection when referral is not feasible in tribal areas of Pune district, Maharashtra, India. PLoS
522 ONE. 2020 Aug;15(8 August).
- 523 13. Gleeson B, Ferreyra C, Palamountain K, Jacob ST, Spotswood N, Kissoon N, et al. A call
524 to bridge the diagnostic gap: diagnostic solutions for neonatal sepsis in low- and middle-
525 income countries. *BMJ Glob Health*. 2024 Sep 1;9(9):e015862.
- 526 14. P K, S KK, K V. A study on the length of stay of neonates in neonatal intensive care unit
527 in a referral hospital in India. *Int J Contemp Pediatr*. 6(2):746–9.
- 528 15. Schmatz M, Srinivasan L, Grundmeier RW, Elci OU, Weiss SL, Masino AJ, et al.
529 Surviving Sepsis in a Referral Neonatal Intensive Care Unit: Association between Time to
530 Antibiotic Administration and In-Hospital Outcomes. *J Pediatr*. 2020 Feb;217:59-65.e1.
- 531 16. Sisay EA, Mengistu BL, Taye WA, Fentie AM, Yabeyu AB. Length of Hospital Stay and
532 Its Predictors Among Neonatal Sepsis Patients: A Retrospective Follow-Up Study. *Int J Gen
533 Med*. 2022;15:8133–42.
- 534 17. Murki S, Vardhelli V, Deshabhotla S, Sharma D, Pawale D, Kulkarni D, et al. Predictors
535 of length of hospital stay among preterm infants admitted to neonatal intensive care unit: Data
536 from a multicentre collaborative network from India (INNC: Indian National Neonatal
537 Collaborative). *J Paediatr Child Health*. 2020 Oct;56(10):1584–9.
- 538 18. Mukhopadhyay R, Arora NK, Sharma PK, Dalpath S, Limbu P, Kataria G, et al. Lessons
539 from implementation research on community management of possible serious bacterial
540 infection (pSBI) in young infants (0-59 days), when the referral is not feasible in Palwal
541 District of Haryana, India. *PLoS ONE*. 2021 Jul;16(7 July).
- 542 19. Saha SK, Schrag SJ, Arifeen SE, Mullany LC, Islam MS, Shang N, et al. Causes and
543 incidence of community-acquired serious infections among young children in south Asia
544 (ANISA): an observational cohort study. *The Lancet*. 2018 Jul;392(10142):145–59.
- 545 20. Weiss SL, Fitzgerald JC, Balamuth F, Alpern ER, Lavelle J, Chilutti M, et al. Delayed
546 Antimicrobial Therapy Increases Mortality and Organ Dysfunction Duration in Pediatric
547 Sepsis. *Crit Care Med*. 2014;42(11):2409–17.
- 548 21. Karambelkar G, Malwade S, Karambelkar R. Cost analysis of Healthcare in a Private
549 sector Neonatal Intensive Care Unit in India. *Indian Pediatr*. 2016 Sep 8;53(9):793–5.
- 550 22. Turner HC, Lauer JA, Tran BX, Teerawattananon Y, Jit M. Adjusting for Inflation and
551 Currency Changes Within Health Economic Studies. *Value Health*. 2019 Sep;22(9):1026–32.
- 552 23. Nichols BE, Sigaloff KCE, Kityo C, Hamers RL, Baltussen R, Bertagnolio S, et al.
553 Increasing the use of second-line therapy is a cost-effective approach to prevent the spread of
554 drug-resistant HIV: A mathematical modelling study. *J Int AIDS Soc*. 2014;17(1).

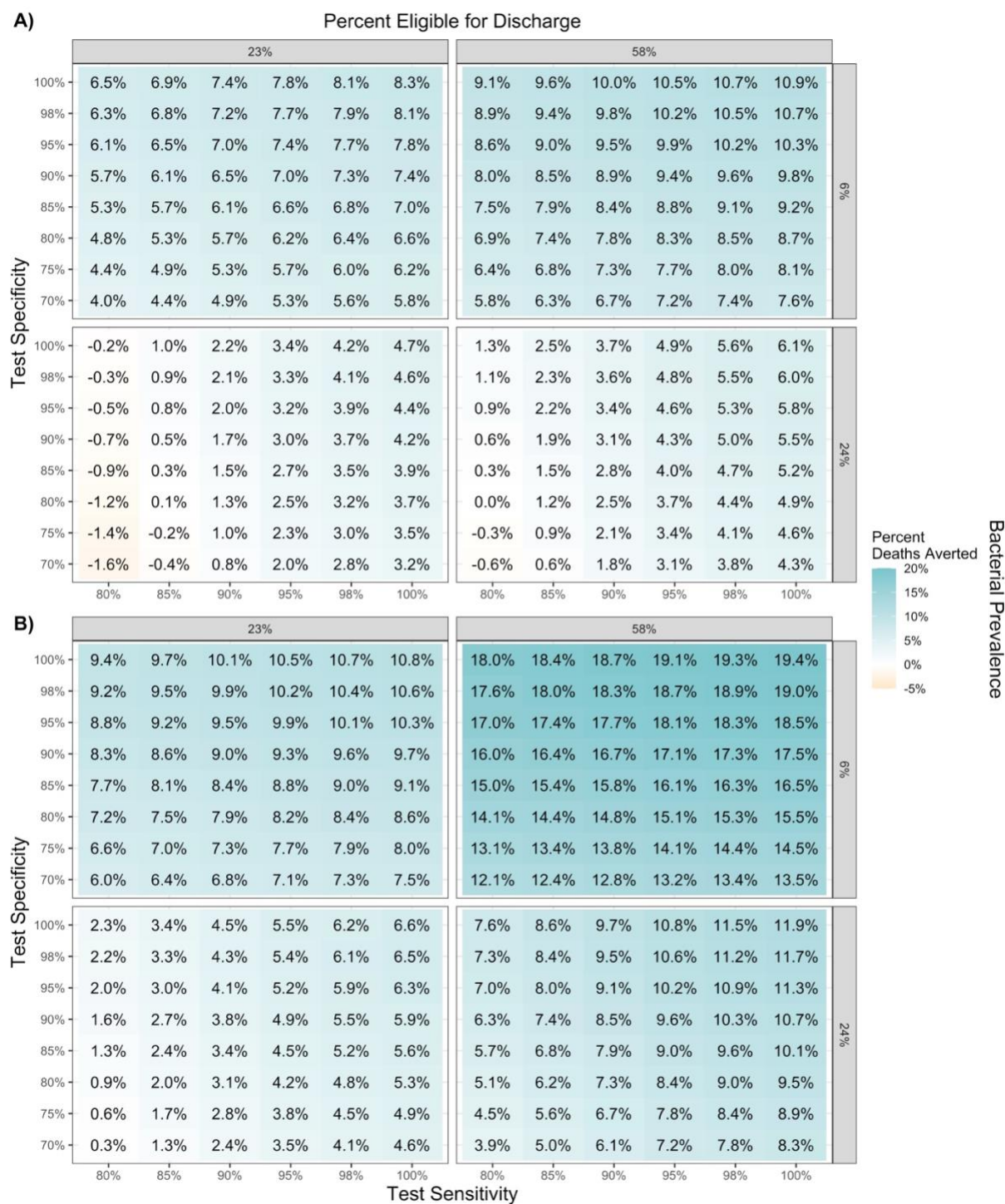
- 555 24. Chauhan AS, Prinja S, Selvaraj S, Gupta A, Muraleedharan VR, Sundararaman T. Cost
556 of delivering primary healthcare services through public sector in India. *Indian J Med Res.*
557 2022 Sep;156(3):372–80.
- 558 25. Milton R, Gillespie D, Dyer C, Taiyari K, Carvalho MJ, Thomson K, et al. Neonatal
559 sepsis and mortality in low-income and middle-income countries from a facility-based birth
560 cohort: an international multisite prospective observational study. *Lancet Glob Health.* 2022
561 May;10(5):e661–72.
- 562 26. Ahmad A, Iram S, Hussain S, Yusuf NW. Diagnosis of paediatric sepsis by automated
563 blood culture system and conventional blood culture. *JPMA J Pak Med Assoc.* 2017
564 Feb;67(2):192–5.
- 565 27. Mathur P, Malpiedi P, Walia K, Srikantiah P, Gupta S, Lohiya A, et al. Health-care-
566 associated bloodstream and urinary tract infections in a network of hospitals in India: a
567 multicentre, hospital-based, prospective surveillance study. *Lancet Glob Health.* 2022
568 Sep;10(9):e1317–25.
- 569 28. Ting JY, Synnes A, Roberts A, Deshpandey A, Dow K, Yoon EW, et al. Association
570 between antibiotic use and neonatal mortality and morbidities in very low-birth-weight infants
571 without culture-proven sepsis or necrotizing enterocolitis. *JAMA Pediatr.* 2016
572 Dec;170(12):1181–7.
- 573 29. Zaidi AK, Huskins WC, Thaver D, Bhutta ZA, Abbas Z, Goldmann DA. Hospital-
574 acquired neonatal infections in developing countries. *The Lancet.* 2005 Mar;365(9465):1175–
575 88.
- 576

577 **Figure 1.** Conceptual diagram for clinical cascade for a point-of-care test for neonatal sepsis at the primary health
 578 care level and hospital. **POCT*: point-of-care test, *PHC*: primary health care, *FB*: fast-breathing, *CSI*: clinical
 579 severe infection, *CI*: critical illness, *HAI*: hospital-associated infection
 580



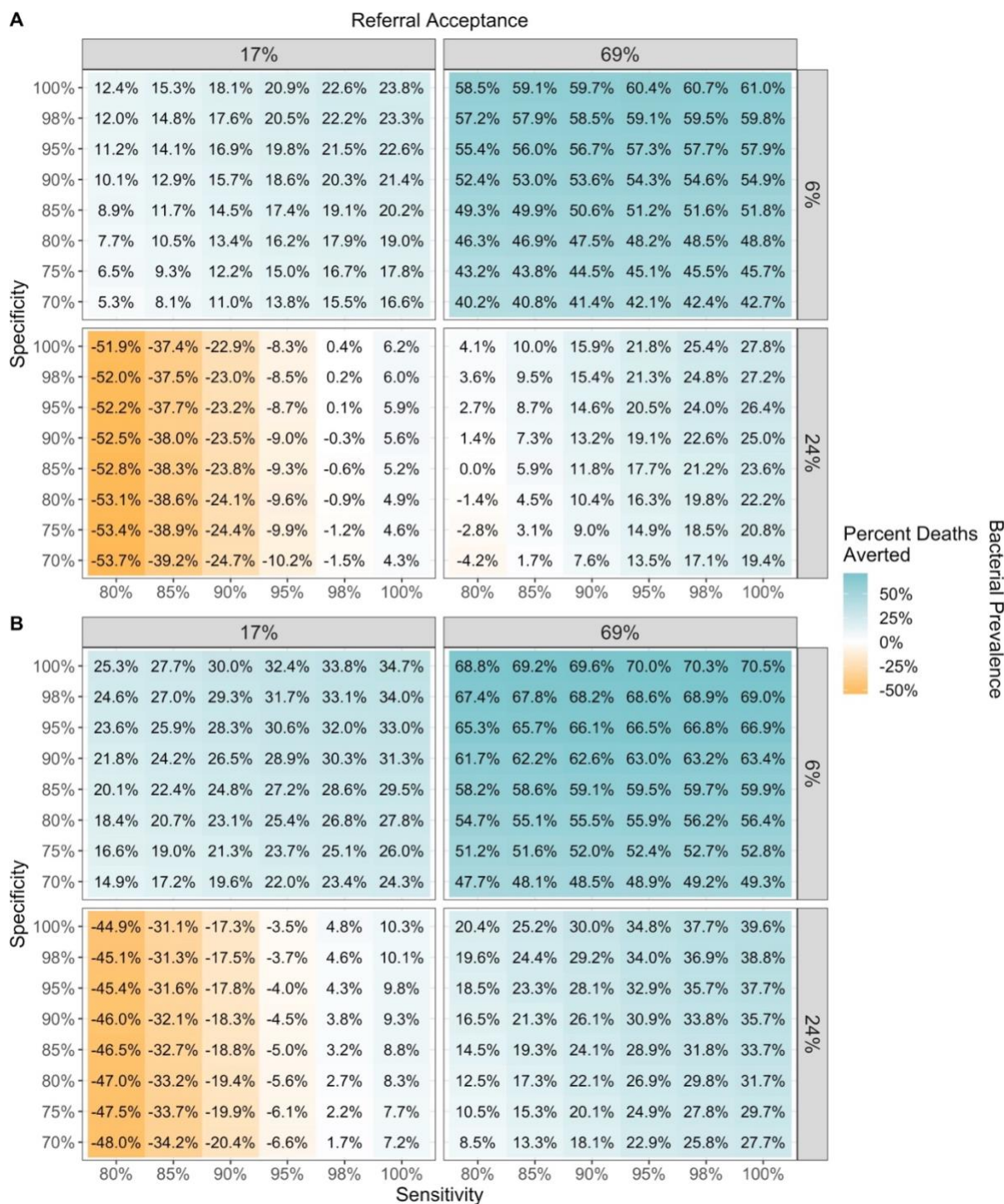
581

582 **Figure 2.** Percent reduction in neonatal deaths in a hospital setting, across modeled bacterial prevalence and
 583 proportion of neonates eligible for discharge, by test specificity and sensitivity, when **A)** the risk of hospital-
 584 associated infections is low (5%) or **B)** high (20%).
 585



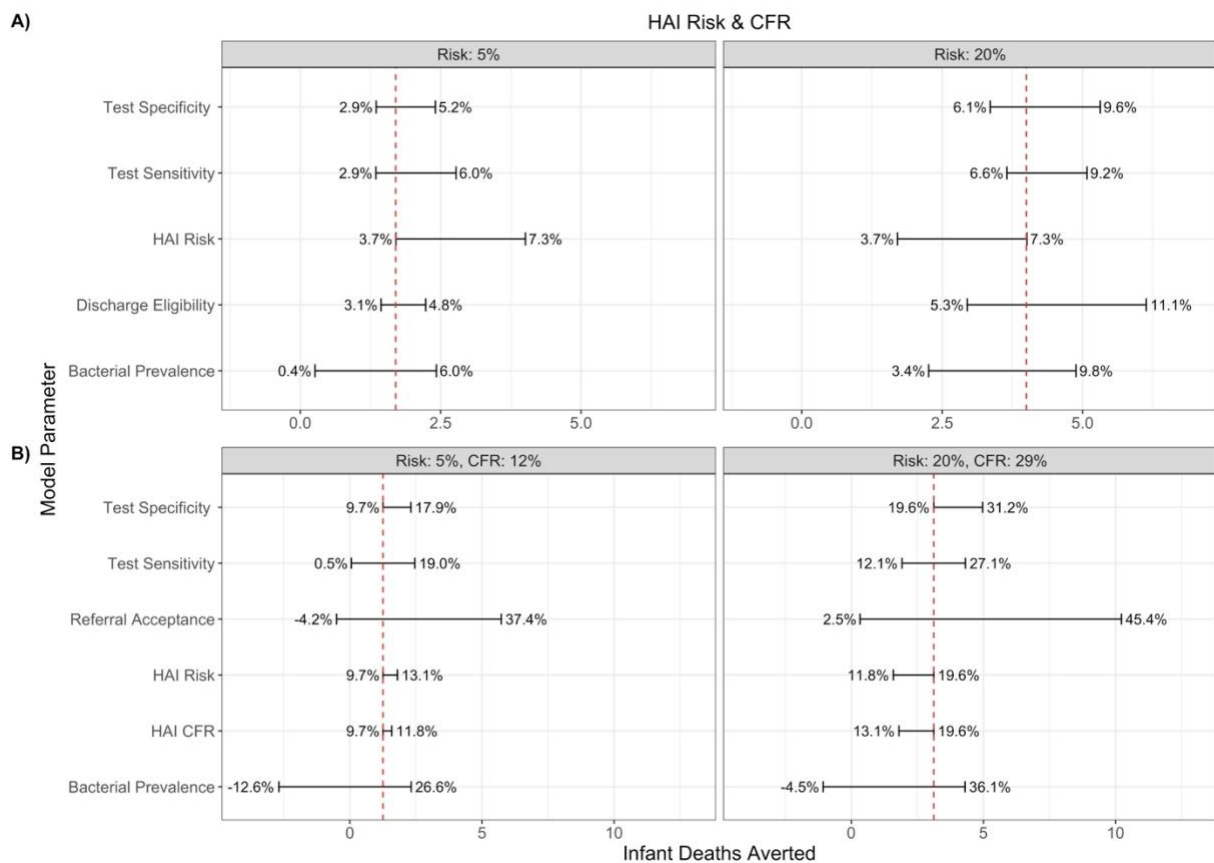
586

587 **Figure 3.** Percent of deaths averted compared to baseline when using the point-of-care test at the community level,
 588 by test sensitivity, specificity, bacterial prevalence, and referral acceptance, when A) HAI risk and mortality are low
 589 (5%, 12%), and B) HAI risk and mortality are high (20%, 29%)
 590



591

592 **Figure 4.** Univariate sensitivity analysis of A) hospital model parameters or B) community model parameters and
 593 the correlated number of neonatal deaths averted, stratified by A) hospital-associated infection risk or B) hospital-
 594 associated infection risk and case fatality rate. The absolute number of deaths averted is shown on the X-axis, while
 595 the corresponding percentage is shown on the error bar label. The vertical red, dashed line represents the number of
 596 deaths averted when all other variables are held at their constant A) specificity: 80%, sensitivity: 85%, discharge
 597 eligibility: 35%, bacterial prevalence: 12% or B) specificity: 70%, sensitivity: 90%, referral acceptance: 37%,
 598 bacterial prevalence: 12%. *HAI: hospital-associated infection, CFR: case fatality rate
 599



600