

# 1 Interplay Between the Gut Microbiome and 2 Typhoid Fever: Insights from Endemic Countries 3 and a Controlled Human Infection Model

4 Philip M. Ashton<sup>1,2</sup>, Leonardos Mageiros<sup>3§</sup>, James E. Meiring<sup>1,2,4§</sup>, Angeziwa Chunga  
5 Chirambo<sup>1,5§</sup>, Farhana Khanam<sup>6§</sup>, Sabina Dongol<sup>9,10§</sup>, Happy Banda<sup>1</sup>, Abhilasha Karkey<sup>9,10</sup>,  
6 Lorena Preciado Llanes<sup>12</sup>, Helena Thomaidis-Brears<sup>12</sup>, Malick Gibani<sup>12,13</sup>, Nazmul Hasan  
7 Rajib<sup>6</sup>, Nazia Rahman<sup>6</sup>, Prasanta Kumar Biswas<sup>6</sup>, Md Amirul Islam Bhuiyan<sup>6</sup>, Sally Kay<sup>7</sup>, Kate  
8 Auger<sup>7</sup>, Olivier Seret<sup>7</sup>, Nicholas R. Thomson<sup>7,8</sup>, Andrew J Pollard<sup>12,14</sup>, Stephen Baker<sup>15</sup>, Buddha  
9 Basnyat<sup>9,17</sup>, John D. Clemens<sup>6</sup>, Christiane Dolecek<sup>17</sup>, Sarah J. Dunstan<sup>18</sup>, Gordon Dougan<sup>15,16</sup>,  
10 Robert S. Heyderman<sup>19</sup>, Virginia E. Pitzer<sup>20</sup>, Firdausi Qadri<sup>6</sup>, Melita A. Gordon<sup>1,2</sup>, Kathryn E.  
11 Holt<sup>3,8\*</sup>, Thomas C. Darton<sup>4\*</sup>, STRATAA Study Group<sup>21</sup>

- 12 1. Malawi-Liverpool-Wellcome Programme, Blantyre, Malawi
- 13 2. Institute of Infection, Veterinary and Ecological Sciences, University of Liverpool, Liverpool, UK
- 14 3. Department of Infectious Diseases, School of Translational Medicine, Monash University,  
15 Melbourne, Victoria, Australia
- 16 4. Clinical Infection Research Group, Division of Clinical Medicine, School of Medicine & Population  
17 Health, and The Florey Institute for Infection, University of Sheffield, UK
- 18 5. Department of Medical Laboratory Sciences, School of Life Sciences and Allied Health  
19 Professions, Kamuzu University of Health Sciences, Malawi
- 20 6. International Centre for Diarrhoeal Diseases Research, Bangladesh, Dhaka, Bangladesh
- 21 7. Wellcome Sanger Institute, Hinxton, UK
- 22 8. Department of Infection Biology, London School of Hygiene & Tropical Medicine, London, UK
- 23 9. Oxford University Clinical Research Unit, Patan Academy of Health Sciences, Kathmandu, Nepal
- 24 10. Patan Academy of Health Sciences, Patan Hospital, Lalitpur, Nepal
- 25 11. MRC Human Immunology Unit, MRC Weatherall Institute of Molecular Medicine, University of  
26 Oxford, Oxford, OX3 9DS, UK.
- 27 12. Oxford Vaccine Group, Department of Paediatrics, University of Oxford, Oxford, UK
- 28 13. Department of Infectious Disease, Imperial College London, London, UK
- 29 14. NIHR Oxford Biomedical Research Centre, Oxford, UK
- 30 15. Department of Medicine, University of Cambridge, Cambridge, UK
- 31 16. Centre for Translational Stem Cell Biology, Hong Kong
- 32 17. Nuffield Department of Medicine, Centre for Tropical Medicine and Global Health, University of  
33 Oxford, Oxford, UK
- 34 18. Department of Infectious Diseases, The University of Melbourne at The Peter Doherty Institute  
35 for Infection and Immunity, Melbourne, Australia
- 36 19. Research Department of Infection, Division of Infection and Immunity, University College  
37 London, London, UK

38 20. Department of Epidemiology of Microbial Diseases, Yale School of Public Health, Yale University,  
39 New Haven, CT, USA

40 21. Strategic Typhoid Alliance Across Asia and Africa Consortium

41

42 \$ contributed equally

43 \* contributed equally

44

45 Working title: Gut microbiome in relation to typhoid fever

46

## 47 Abstract

48 Typhoid fever is a systemic infection caused by *Salmonella enterica* serovar Typhi (*S. Typhi*)  
49 invasion from the gut lumen. Transmission between people occurs through ingestion of  
50 contaminated food and water, particularly in settings with poor water and sanitation  
51 infrastructure, resulting in over 10 million illnesses annually. As the pathogen invades via the  
52 gastrointestinal tract, it is plausible that the gut microbiome may influence the outcome of *S.*  
53 *Typhi* exposure. There is some evidence that bacteria producing short-chain fatty acids  
54 (SCFAs) may create an environment unfavourable to invasive *Salmonella*, but data from  
55 humans is limited.

56  
57 To investigate the association between gut microbiome and typhoid fever, we analysed samples  
58 collected from three all-age cohorts enrolled in a prospective surveillance study conducted  
59 across three settings where typhoid fever is endemic (Dhaka, Bangladesh; Blantyre, Malawi;  
60 and Kathmandu, Nepal). Cohorts consisted of acute typhoid fever patients (n=92),  
61 asymptomatic household contacts of typhoid fever patients (representing individuals who were  
62 likely exposed to *S. Typhi* but did not develop disease, n=97), and asymptomatic serosurvey  
63 participants with high Vi antibody titres (representing individuals who were exposed to *S. Typhi*  
64 and may be carriers, n=69). The stool microbiomes of each cohort were characterised using  
65 shotgun metagenomics, and bacterial diversity, composition, and function were compared.

66  
67 We identified 4 bacterial species that were significantly lower in abundance in typhoid fever  
68 patients compared with household contacts (i.e. probably exposed), in two of the three  
69 participant populations (Bangladesh and Malawi). These bacteria may represent taxa that  
70 provide protection against development of clinical infection upon exposure to *S. Typhi*, and  
71 include the inflammation-associated species *Prevotella copri* clade A and *Haemophilus*  
72 *parainfluenzae*. Our functional analysis identified 28 specific metabolic gene clusters (MGCs)  
73 negatively associated with typhoid fever in Bangladesh and Malawi, including seven MGCs  
74 involved in SCFA metabolism. The putative protection provided by microbiome SCFA  
75 metabolism was supported by data from a controlled human infection model conducted in a UK  
76 population, in which participants who did not develop typhoid fever following ingestion of *S.*  
77 *Typhi* had higher abundance of a putative SCFA-metabolising MGC (q-value = 0.22).

78

79 This study identified the same protective associations between taxonomic and functional  
80 microbiota characteristics and non-susceptibility to typhoid fever across multiple human  
81 populations. Future research should explore the potential functional role of SCFAs and  
82 inflammation-associated bacteria in resistance to *S. Typhi* and other enteric infections.

## 83 Introduction

84 Typhoid fever, caused by invasive *Salmonella enterica* serovar Typhi (*S. Typhi*) infection,  
85 causes an estimated 10.9 million illnesses and 116,800 deaths per year disproportionately  
86 affecting people in South and Southeast Asia and sub-Saharan Africa (Stanaway et al. 2019;  
87 Meiring et al. 2023). The introduction of typhoid conjugate vaccines is expected to decrease the  
88 number of typhoid fever cases in these settings, along with improvements in water, sanitation  
89 and hygiene (WASH). However, the large burden of disease, the role of asymptomatic gall  
90 bladder carriage as a source of infection, and the fact that typhoid fever often impacts the most  
91 impoverished and marginalised communities, means that eradicating this infection will be  
92 difficult (Meiring et al. 2021; Patel et al. 2021; Steele et al. 2016).

93  
94 The human gut microbiota, a complex ecosystem comprising trillions of microbial cells, plays an  
95 indispensable role in shaping our overall health and susceptibility to diseases (Shreiner, Kao,  
96 and Young 2015). This densely populated microbial environment is not only pivotal in the  
97 processes of digestion and nutrient absorption but also intimately connected to our immune  
98 system, determining its responses to various stimuli (Belkaid and Hand 2014). As the nexus  
99 between the external environment and our internal physiology, the gut microbiome is a critical  
100 determinant of the outcome of gastrointestinal infectious disease exposures, via a phenomenon  
101 termed 'colonization resistance' (Stecher et al. 2007; Winter et al. 2010; Lopez et al. 2016;  
102 Libertucci and Young 2019). This protective effect arises from multifaceted interactions: direct  
103 competition for nutrients, production of antimicrobial compounds, and modulation of the host's  
104 innate and adaptive immune responses (Leshem, Liwinski, and Elinav 2020). Some of the  
105 earliest work on colonisation resistance showed that suppressing the gut microbiome of mice  
106 with antibiotics dramatically reduced the dose of *Salmonella* required to establish infection  
107 (Bohnhoff, Drake, and Miller 1954). Recent work has made great strides in understanding  
108 mechanisms by which *Salmonella* and the microbiome interact (Rogers, Tsolis, and Bäumler  
109 2021). Short chain fatty acids (SCFAs) are important in interaction between the microbiota and  
110 *Salmonella*, reducing the availability of oxygen in the gut (Byndloss et al. 2017) and acidifying  
111 the cytosol of *Salmonella*, inhibiting growth (Jacobson et al. 2018). Despite well-established  
112 knowledge about the gut microbiome's function in preventing *Salmonella* infections and the  
113 established faecal-oral transmission pathway of *S. Typhi*, the precise influence of the gut  
114 microbiome on the outcome of *S. Typhi* exposure remains underexplored, complicated by the  
115 human host-specificity of *S. Typhi*.

116

117 While insights from animal studies of invasive infection with other *S. enterica* serovars can be  
118 informative, detailed studies of the interaction between the human gut microbiome and *S. Typhi*  
119 specifically are lacking. Controlled human infection model (CHIM) studies provide an  
120 experimental system in which to interrogate infections in humans, complementing observational  
121 studies of natural infections (Waddington et al. 2014; Gibani et al. 2020). Previous data  
122 generated from this model revealed an association between typhoid fever susceptibility and the  
123 presence of *Methanobrevibacter* in the gut microbiome (Zhang et al. 2018). Analysing natural  
124 infections, Haak et al. determined that typhoid fever patients in Bangladesh had reduced  
125 microbial diversity and fewer SCFA producers than healthy counterparts (Haak et al. 2020).  
126 Better understanding of the causal relationships between the gut microbiome and typhoid fever  
127 could lead to novel preventative mechanisms and diagnostics, as well as an improved  
128 understanding of colonisation resistance to bacteria causing serious invasive diseases in high  
129 burden settings.

130

131 To fill this knowledge gap, we sequenced the stool microbiome of 258 participants enrolled in  
132 the STRATAA study, conducted in three diverse high typhoid fever burden settings in Asia and  
133 Africa (Meiring et al. 2021). Signals that replicated in more than one study population were  
134 further investigated in a UK-based CHIM cohort.

## 135 Materials & Methods

### 136 Participants and sample collection

137 Detailed methods for the STRATAA study have been published previously (Darton et al. 2017;  
138 Meiring et al. 2021). In brief, approximately 100,000 individuals were enumerated in a  
139 demographic census in three communities: Ndirande in Blantyre, Malawi; Lalitpur in  
140 Kathmandu, Nepal; and Mirpur in Dhaka, Bangladesh. Febrile patients, of any age, within the  
141 study populations were recruited via passive surveillance, and “acute typhoid fever” patients  
142 were defined as those with positive blood cultures yielding *S. Typhi*. When participants  
143 presented with fever, stool samples were collected where possible, preferably prior to  
144 antimicrobial use. Stool specimens were transferred to -80°C within 6 hours of collection. Data  
145 on antimicrobial use prior to their enrolment was recorded (Darton et al. 2017). Blood-culture  
146 confirmed typhoid fever patients were then followed up and stool samples were collected from  
147 their household contacts; asymptomatic stool culture-negative individuals were included in  
148 microbiome sequencing. High Vi-titre individuals were identified from a community-based  
149 serological survey of up to 8,500 age-stratified participants per site from the original  
150 demographic census. From the serological survey, samples were analysed for anti-Vi IgG  
151 antibody (Meiring et al. 2021). The participants at each site with the highest Vi responses were  
152 followed up and stool sample collected for microbiome analysis (Khanam et al. 2021). Stool  
153 cultures were *S. Typhi*-negative in all but one participant (Khanam et al. 2021), however it is  
154 known that carriers shed only intermittently and high-Vi individuals is an acceptable predictor for  
155 *S. Typhi* carriage (Robbins and Robbins 1984; Qureshi et al. 2024). For the microbiome sub-  
156 study, we randomly selected for sequencing stool samples from up to 40 participants from each  
157 site, from each of three groups: acute typhoid fever cases, household contacts, and serosurvey  
158 participants with high-Vi titres.

159

160 Research ethics committee approval for a joint study protocol across all three surveillance sites  
161 was obtained within each country and from the Oxford Tropical Research Ethics Committee  
162 (University of Oxford, Oxford, UK).

## 163 DNA extraction and sequencing

164 DNA extraction from stool was done using the Fast-Prep 24 FastDNA Spin Kit (MP Biomedicals,  
165 CA, USA) according to manufacturer's instructions. DNA was sent to the Wellcome Sanger  
166 Institute (UK) for metagenomic sequencing using Illumina HiSeq 2500 or HiSeq 4000 to  
167 generate 150 bp paired end reads, yielding an average 14.8 million read pairs (standard  
168 deviation 2.3 million) per sample.

## 169 Bioinformatics

170 Raw sequencing data was quality trimmed and adapters were removed using bbdduk v38.96 with  
171 the parameters `ktrim=r k=23 mink=11 hdist=1 tbo tpe qtrim=r trimq=20 minlength=50`.

172 Sequence deriving from human DNA was removed by mapping to a human reference genome  
173 (GCF\_009914755.1) and the hostile tool (Constantinides, Hunt, and Crook 2023). Taxonomic  
174 profiling was carried out with metaphlan v4.0.6 with database version  
175 mpa\_vOct22\_CHOCOPHiAnSGB\_202212 (Blanco-Míguez et al. 2023).

176

177 We used the BiG-MAP program (Victória Pascal Andreu et al. 2021)

178 (<https://github.com/medema-group/BiG-MAP>, commit e7b8042) to compare metagenomic  
179 readsets against a database of non-redundant metabolic gene clusters (MGCs) identified using  
180 gutSMASH (Victòria Pascal Andreu et al. 2023) from a collection of reference genomes from the  
181 Culturable Genome Reference, the Human Microbiome Project and other Clostridia genomes  
182 (<https://zenodo.org/records/7252625#.ZFVTrexBz0r>). Each MGC is assigned to a species which  
183 is the species from which the representative sequence representing the cluster was obtained.

184 BiG-MAP calculated the number of reads per kilobase per million reads (RPKM) for each  
185 metabolic gene cluster.

186

187 A sub-sample of 8.8 million reads was taken from each readset using the `sample` command of  
188 the seqtk tool (v1.3-r106). Sub-sampled reads were then analysed with Resistance Gene  
189 Identifier (RGI) v6.0.2 bwt command against the CARD v3.2.7 reference database (Alcock et al.  
190 2023). Due to uncertainty regarding some CARD database classifications (e.g. OXA-1 was  
191 classified as a carbapenemase, a curation error which has subsequently been resolved), we  
192 used the drug class information for each gene from the NCBI AMR Reference Gene Database  
193 (refgene) v2023-08-08.2 (<https://www.ncbi.nlm.nih.gov/pathogens/refgene>). Only "Core" genes



194 from NCBI refgene were analysed; these genes are almost entirely mobilisable AMR  
195 determinants and do not include mutational resistance. Extended-spectrum beta-lactamases  
196 (ESBLs) were identified based on the gene product descriptions in NCBI refgene. Only genes  
197 with an Average Percent Coverage of 100% in the RGI analysis were included in further  
198 analysis. The number of reads mapped to each gene (RGI Completely Mapped Reads) was  
199 normalised by the length of the gene (RGI Reference Length) to generate a “Reads per kilobase  
200 of AMR gene” metric. There was no need to normalise for the number of reads, as all readsets  
201 had been sub-sampled to the same number of reads. RGI results were parsed and analysed  
202 using the scripts described in the Data Availability section of this manuscript. AMR genes  
203 identified in *S. Typhi* were obtained from (Argimón et al. 2021).

204

## 205 Statistical analysis

206 Statistical analyses were done in R (v4.1.0). To quantify alpha diversity, Shannon’s index was  
207 calculated using the `alpha.div` function in the `rbiom` package (v1.0.3), and ANOVA analysis  
208 carried out with the `aov` function (stats package, v4.1.0). The Bray-Curtis metric of beta diversity  
209 was calculated with the `vegdist` function of the R package `vegan` (v2.6.4). Principal co-ordinates  
210 analysis (PCoA) was carried out with the `cmdscale` function (package stats, v4.1.0), and  
211 statistics comparing beta diversity between participant groups (i.e. acute typhoid, household  
212 contacts, presumptive carrier) was carried out using a PERMANOVA approach implemented by  
213 the `adonis2` function of the `vegan` package (v2.6.4). Associations between taxa and phenotypes  
214 of interest (e.g. participant group) were explored using multivariable linear modelling  
215 implemented in the `maaslin2` function of the `maaslin2` R package (v1.6.0) (Mallick et al. 2021).  
216 Depending on the analysis, co-variables such as age, sex, antibiotic exposure, and sequencing  
217 run were included, as described. For `maaslin2` analyses, Benjamini-Hochberg correction was  
218 applied for multiple testing. For analyses of data from endemic cohorts a q-value threshold of  
219 0.05 was used to identify significant associations, while for CHIM data analyses, due to small  
220 sample size, the default `maaslin2` q-value threshold of 0.25 was used.

## 221 Controlled human infection model analysis

222 We used data from a *Salmonella* Typhi and Paratyphi A CHIM cohort to validate the  
223 associations identified in the endemic countries. Briefly, healthy adults aged 18-60 were  
224 recruited to be challenged with a single oral dose of either *S. Typhi* or *S. Paratyphi A* (Gibani et  
225 al. 2020). The primary endpoint for the model was a diagnosis of typhoid or paratyphoid fever,

226 defined as a temperature of  $\geq 38^{\circ}\text{C}$  persisting for  $\geq 12$  hours and/or *S. Typhi*/*Paratyphi A*  
227 bacteraemia in a sample collected  $\geq 72$  hours after oral challenge. Only data from participants  
228 who were being challenged for the first time were analysed here. Stool samples were taken  
229 from participants prior to challenge and stored at  $-80^{\circ}\text{C}$ . DNA extraction, sequencing and  
230 analyses was undertaken using the methods described above. The primary maaslin2 analyses  
231 for this cohort included only species or MGC classes that were significantly associated with  
232 participant group in at least two endemic country cohorts; a secondary analysis was carried out  
233 without this restriction. Analyses were done separately for participants challenged with either *S.*  
234 *Typhi* or *S. Paratyphi A*, in addition to a combined analysis including both pathogens.  
235

## 236 Results

### 237 Description of population

238 Stool microbiome sequences were successfully generated for 258 participants from Bangladesh  
239 (n = 80), Malawi (n = 102), and Nepal (n = 76). Across the three populations, there were three  
240 participant groups; 92 patients with acute typhoid fever, 97 household contacts of acute typhoid  
241 cases, and 69 people with high anti-Vi titres. The baseline characteristics of participants are  
242 described in Table 1. Overall, acute typhoid fever patients were significantly younger than  
243 household contacts, while in Bangladesh and Malawi high-Vi titre participants were significantly  
244 older than household contacts (Supplementary Figure 1, Table 1). Overall, in Malawi,  
245 Bangladesh, and Nepal, 62%, 53% and 54% of participants were female, respectively (Table 1,  
246 Supplementary Figure 2). In Bangladesh and Malawi, sex distribution was similar between the  
247 participant groups, whereas in Nepal, 82% of household contacts and 67% of carriers were  
248 female, while only 24% of typhoid fever cases were female (Table 1, Supplementary Figure 2).  
249 Of the acute typhoid fever cases, 37.5%, 73.9% and 44.8% from Bangladesh, Malawi, and  
250 Nepal, respectively, reported antimicrobial use in the 2 weeks prior to stool sample collection.  
251

252 *Table 1: Characteristics of participants in the microbiome sub-study of STRATAA surveillance*

|                      |                                 | <b>Bangladesh</b> | <b>Malawi</b> | <b>Nepal</b> |
|----------------------|---------------------------------|-------------------|---------------|--------------|
| <b>Acute typhoid</b> | N                               | 40                | 23            | 29           |
|                      | Median age, years (range)       | 6 (1-60)          | 10 (3-40)     | 17 (5-38)    |
|                      | Female (%)                      | 48%               | 61%           | 24%          |
|                      | Antibiotics in last 2 weeks (%) | 38%               | 74%           | 45%          |
| <b>Carrier</b>       | N                               | NA*               | 39            | 30           |
|                      | Median age                      | NA*               | 32            | 43.9         |
|                      | Female (%)                      | NA*               | 56%           | 67%          |
|                      | Antibiotics in last 2 weeks (%) | NA*               | NA†           | NA†          |
| <b>Control</b>       | N                               | 40                | 40            | 17           |
|                      | Median age, years (range)       | 29 (4-65)         | 24 (18-41)    | 35 (15-48)   |
|                      | Female (%)                      | 65%               | 65%           | 82%          |
|                      | Antibiotics in last 2 weeks (%) | NA†               | NA†           | NA†          |

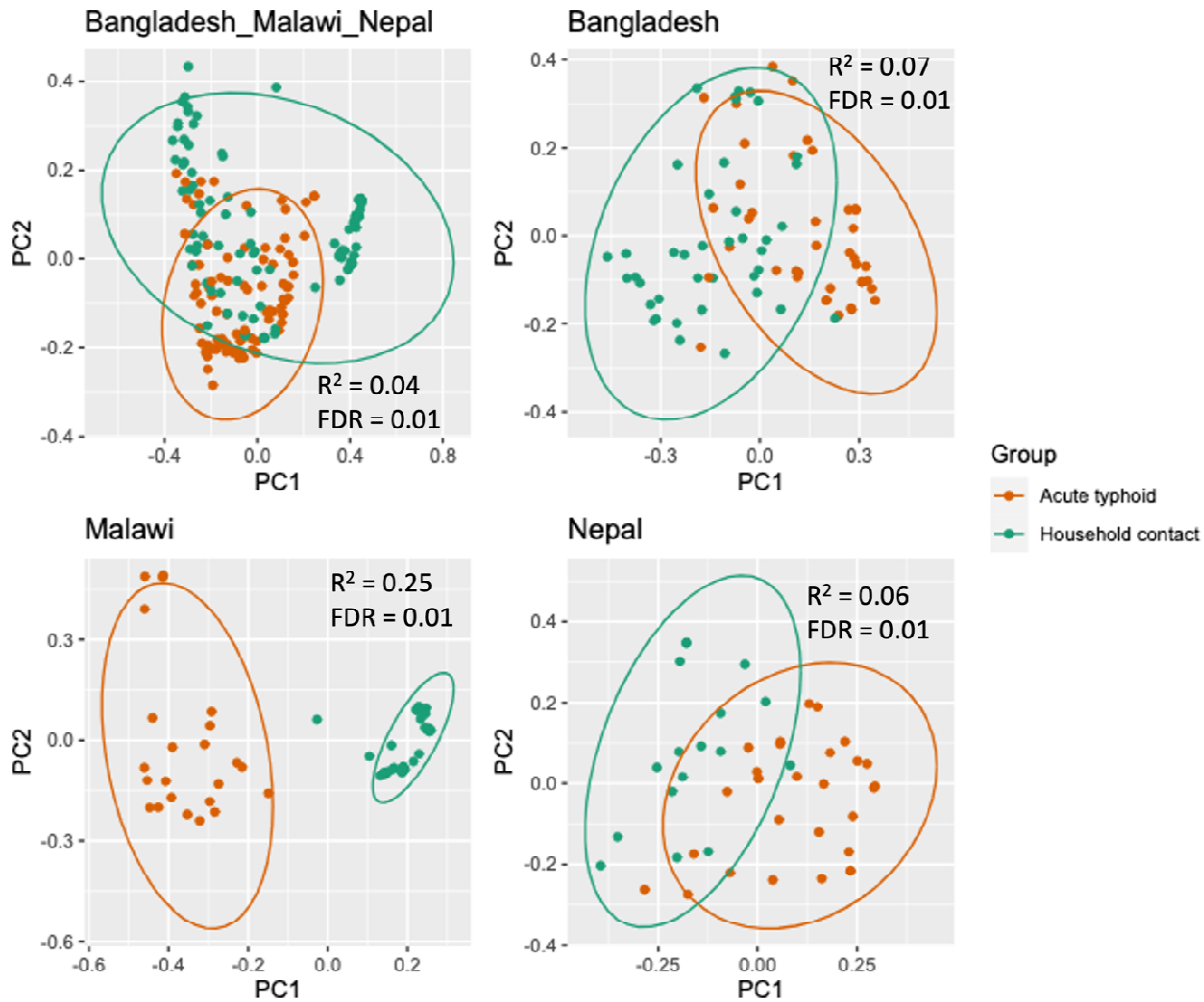
253 \* Carriers from Bangladesh were not included in the analysis due to sample protocol differences

254 † Antibiotic usage in the two weeks previous was an exclusion criterion for carriers and  
255 household contacts.

## 256 Acute typhoid fever patients compared with household contacts

257 First, we compared stool metagenomic profiles of acute typhoid patients with those of  
258 household contacts, within each of the three study populations, to explore microbiome  
259 signatures associated with typhoid fever. Participant group was not significantly associated with  
260 differences in alpha diversity in any population (Supplementary Figure 3, Supplementary Table  
261 1). Beta diversity varied significantly between typhoid fever patients and household contacts  
262 across all sites (Figure 1, Supplementary Table 2). The proportion of beta diversity variance  
263 explained by participant group was highest in Malawi ( $R^2 = 0.25$ , FDR = 0.01), followed by

264 Bangladesh ( $R^2 = 0.07$ , FDR = 0.01), Nepal ( $R^2 = 0.06$ , FDR = 0.01) and the combined analysis  
265 ( $R^2 = 0.04$ , FDR = 0.01) (Figure 1, Supplementary Table 2, Supplementary Table 3,  
266 Supplementary Table 4, Supplementary Table 5). Participant group explained the greatest beta  
267 diversity variance of the factors investigated (which also included sex, age, and reported  
268 antibiotic use) in a combined analysis of all three sites and for each site individually. In Malawi,  
269 prior antibiotic usage and the interaction of prior antibiotic usage with age and sex were also  
270 significantly associated with beta diversity, although these variables explained a lower  
271 proportion of variance than participant group ( $R^2$  0.02-0.05, Supplementary Table 4). In Nepal,  
272 sex was significantly associated with beta diversity and explained almost as much variance as  
273 participant group ( $R^2 = 0.04$ , Supplementary Table 5), which was itself associated with sex at  
274 this site. Firmicutes was the dominant phylum in typhoid fever patients and household contacts  
275 at all three sites, followed by Bacteroidetes in Malawi and Nepal and Actinobacteria in  
276 Bangladesh (Supplementary Figure 4, Supplementary Table 6).

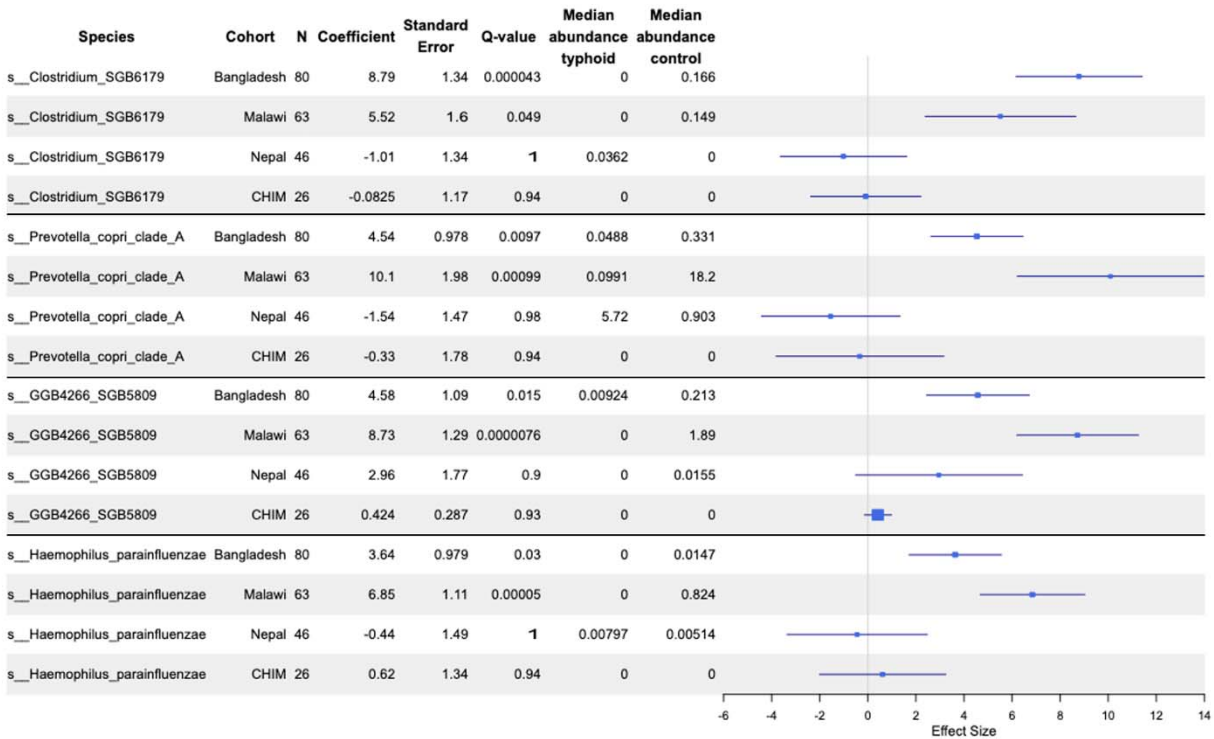


277

278 *Figure 1: Principal co-ordinate analysis of the beta diversity between household contacts and typhoid fever*  
279 *participants across all three sites, and for each site individually. The proportion of variance explained ( $R^2$ ) and the*  
280 *Bonferroni corrected FDR from a PERMANOVA analysis including participant group, sex, and antibiotic usage are*  
281 *displayed on each plot. In the combined analysis, country of sampling was also included in the PERMANOVA*  
282 *analysis.*

283 Maaslin2 analysis of taxonomic profiles identified 92, 23 and 0 species significantly associated  
284 with household contact vs typhoid fever participant groups in Malawi, Bangladesh, and Nepal,  
285 respectively (Figure 2, Supplementary Table 7, Supplementary Table 8). No taxa showed  
286 significant associations across all three sites; however, four showed consistent associations at  
287 two sites (Bangladesh and Malawi), all of which were negatively associated with typhoid fever  
288 (Figure 2). These four species were *Prevotella copri* clade A, *Haemophilus parainfluenzae*,  
289 *Clostridium* SGB6179 and a *Veillonellaceae* spp represented by a metagenome assembled  
290 genome, GGB4266\_SGB5809. Although there were differences in age between cases and  
291 household contacts at all sites, age was included as a covariate in maaslin2, and the  
292 associations with typhoid status were also evident within age groups where data from that age

293 group was available (Supplementary Figures 5-8). Of these four species, none were significantly  
 294 associated with typhoid fever in Nepal or the CHIM; most samples from the CHIM did not  
 295 contain any reads assigned to these species (Supplementary Table 29).



296  
 297 *Figure 2: Forest plot of species that significantly differed between household contacts and typhoid fever participants*  
 298 *in at least two endemic countries. Results from all three endemic countries and the CHIM cohort are shown for*  
 299 *context. CHIM maaslin2 analysis only included species that were significantly associated in at least two of the*  
 300 *endemic country sites. Species are labelled with their GTDB identifier, note that 's\_\_ GGB4266\_SGB5809' refers to a*  
 301 *proposed novel genus/species of Veillonellaceae.*

302  
 303 Some species were associated with typhoid fever at a single endemic country site. In  
 304 Bangladesh, there were 19 species for which the relative abundance significantly differed  
 305 between typhoid fever participants and household contacts, that didn't differ at any other site, or  
 306 in the CHIM (Supplementary Table 7). Three species were negatively associated with typhoid  
 307 fever (*Prevotella copri* clade C, *Romboutsia timonensis*, and *Ligilactobacillus ruminis*), while 16  
 308 species including 7 species of Actinomyces were positively associated with typhoid fever  
 309 (Supplementary Table 7). In Malawi, 70 species were negatively associated with typhoid fever,  
 310 including *Ruminococcus gnavus*, *Roseburia intestinalis*, *Roseburia inulinivorans*, and  
 311 *Faecalibacterium prausnitzii* (Supplementary Table 8), while 18 species were positively  
 312 associated with typhoid fever including 11 (61%) that are only in the Metaphlan4 database as  
 313 metagenome assembled genomes (Supplementary Table 8).

314

315 To complement our taxonomic analysis, we also carried out functional gene analysis. We  
316 explored two dimensions of variation in metabolic gene clusters (MGCs). First, we examined the  
317 distribution of specific MGCs, investigating participant group differences at a granular, sub-type  
318 level (e.g. a specific RNF complex from a strain of *Bacteroides ovatus*). Second, we compared  
319 the abundance of different MGC types between participant groups (e.g. all RNF complex  
320 MGCs). This dual approach enables us to capture both detailed and broad patterns of functional  
321 gene distribution within the microbiome.

322

323 We identified 264 specific MGCs that significantly differed between typhoid fever patients and  
324 household contacts in the Malawi cohort, 126 in Bangladesh, and 2 in Nepal (Supplementary  
325 Table 24, Supplementary Table 25, Supplementary Table 26). Neither of the specific MGC  
326 associations identified in the Nepal data were replicated in the Malawi or Bangladesh cohorts.  
327 There were 28 specific MGCs significantly associated with typhoid fever in both Bangladesh and  
328 Malawi (summarised in Table 2, full information in Supplementary Table 9), all were negatively  
329 associated with typhoid fever in both settings. Six of these specific MGCs were linked to SCFA  
330 metabolism ('pyruvate2acetate.formate') and five to anaerobic metabolism ('Rnf complex'),  
331 associated with *Prevotella* and *Haemophilus* (see Figure 2, Supplementary Table 9). None of  
332 these 28 specific MGCs showed negative associations with acute typhoid fever in Nepal.

333

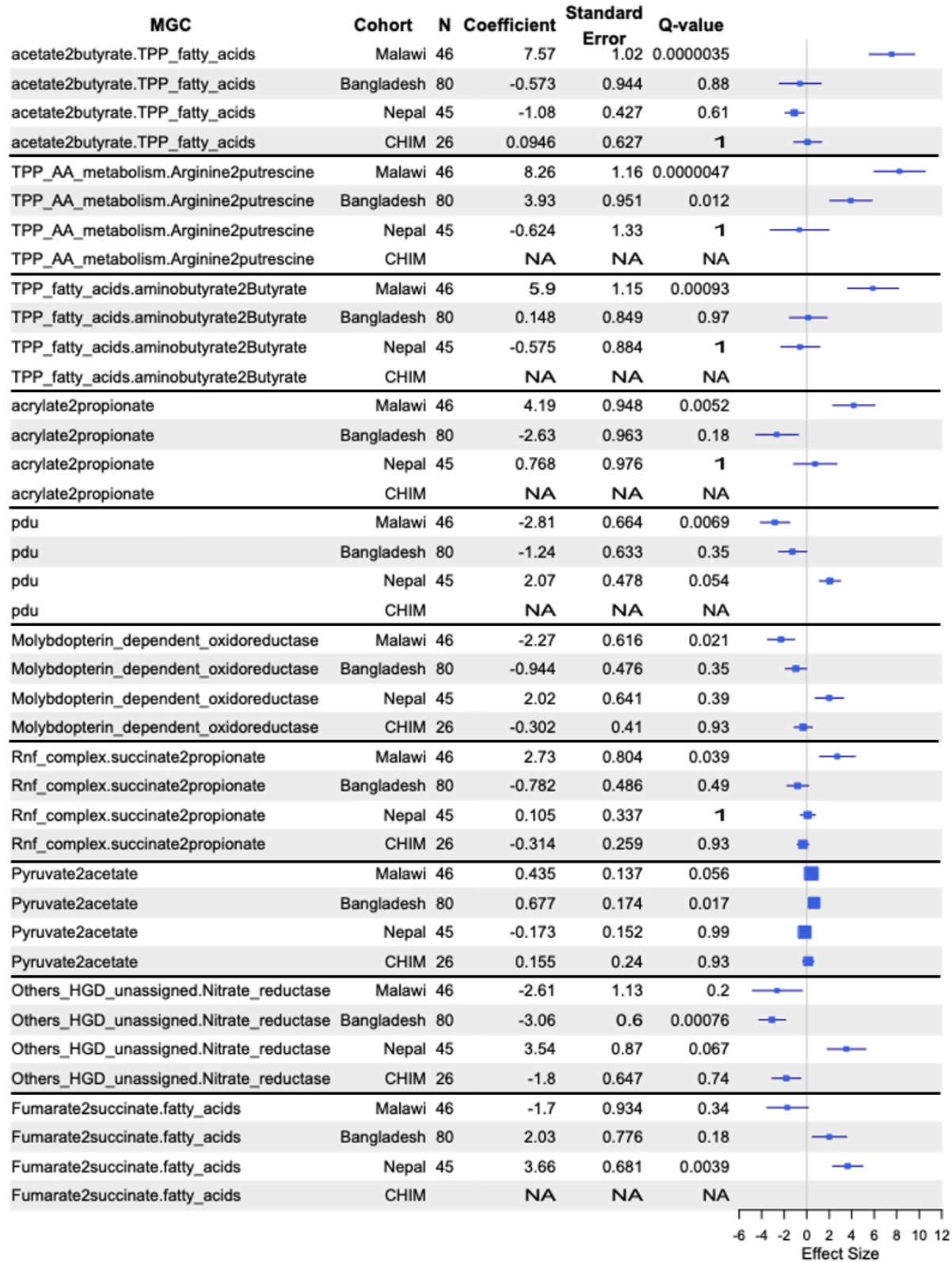


334 *Table 2: Summary of the specific MGCs negatively associated with typhoid fever in both Bangladesh and Malawi, and*  
 335 *the species of each MGC reference sequence. Full information in Supplementary Table 9.*

| MGC_class                                 | n | Species   |
|---|---|---|
| Pyruvate2acetate.formate                  | 6 | Haemophilus aegyptius, Haemophilus haemolyticus, Haemophilus parainfluenzae, Prevotella copri, Prevotella sp., Prevotella sp. |
| Rnf_complex                               | 5 | Haemophilus parainfluenzae, Prevotella copri, Prevotella sp., Prevotella sp., Prevotella sp.                                  |
| TPP_AA_metabolism                         | 4 | Clostridium celatum, Haemophilus pittmaniae, Haemophilus sputorum, Prevotella sp.   |
| Respiratory_glycerol                      | 2 | Aggregatibacter sp., Haemophilus parainfluenzae   |
| Arginine2putrescine.Putrescine2spermidine | 1 | Romboutsia sp.  |
| Formate_dehydrogenase                     | 1 | Haemophilus sp.   |
| Fumarate2succinate                        | 1 | Haemophilus sp.   |
| OD_eut_pdu_related.PFOR_II_pathway        | 1 | Paeniclostridium sordellii  |
| OD_fatty_acids                            | 1 | Dialister succinatiphilus   |
| Others_HGD_unassigned                     | 1 | Prevotella copri  |
| PFOR_II_pathway                           | 1 | Prevotella sp.  |
| TPP_AA_metabolism.Arginine2putrescine     | 1 | Haemophilus sp.   |
| TPP_fatty_acids                           | 1 | Prevotella copri  |
| porA                                      | 1 | Prevotella copri  |
| succinate2propionate                      | 1 | Dialister invisus   |

336  
 337 There were 31 MGC types that significantly differed between typhoid fever patients and  
 338 household contacts in the Malawi cohort, 8 in Bangladesh, and 1 in Nepal (Figure 3,  
 339 Supplementary Table 30). There was one MGC type that was negatively associated with  
 340 typhoid fever in both Malawi and Bangladesh, “TPP\_AA\_metabolism.Arginine2putrescine”.  
 341 Other MGC types that were negatively associated with typhoid fever in Malawi only included  
 342 “acetate2butyrate.TPP\_fatty\_acids”, “TPP\_fatty\_acids.aminobutyrate2Butyrate”,  
 343 “acrylate2propionate” and “Rnf\_complex.succinate2propionate”, while in Bangladesh,  
 344 “Pyruvate2acetate” was negatively associated with typhoid fever. In Bangladesh,  
 345 “Others\_HGD\_unassigned.Nitrate\_reductase” was positively associated with typhoid fever,  
 346 while in Malawi, two MGC types were positively associated with typhoid fever –  
 347 “Molybdopterin\_dependent\_oxidoreductase” and “pdu”. In Nepal,  
 348 “Fumarate2succinate.fatty\_acids” was significantly negatively associated with typhoid fever.

It is made available under a [CC-BY 4.0 International license](https://creativecommons.org/licenses/by/4.0/).



349

350

351

352

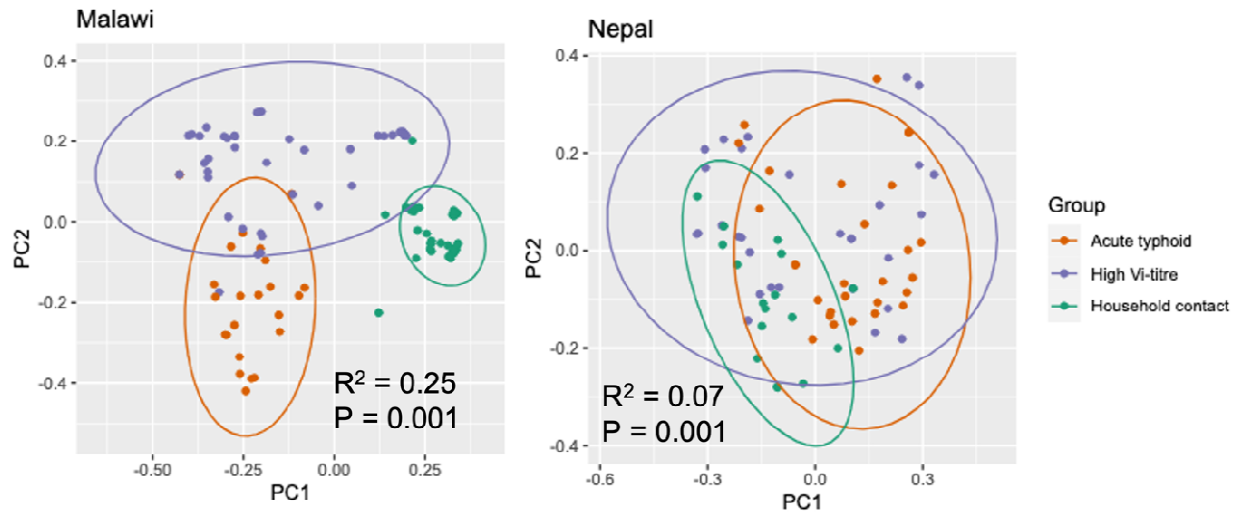
Figure 3: Forest plot of selected MGC types that differed significantly between household contacts and typhoid fever participants in at least one cohort. If an entry is NA, then there was insufficient of that MGC type identified in that cohort for maaslin analysis.

353 We hypothesised the taxa and MGCs that were found in higher abundance in asymptomatic  
354 household contacts of typhoid fever patients may be protective against developing disease upon  
355 exposure to *S. Typhi*. We sought to explore this more directly by assessing their abundance in  
356 CHIM participants who did or did not develop enteric fever upon challenge with typhoidal  
357 *Salmonella*, in a UK-based study (Gibani et al. 2020). We sequenced the microbiomes of 13  
358 participants who were subsequently challenged with *S. Typhi* and 13 with *S. Paratyphi A*, of  
359 which 7 and 6 were diagnosed with enteric (typhoid or paratyphoid) fever, respectively  
360 (Supplementary Table 18). There was no significant difference (FDR < 0.05) in alpha or beta  
361 diversity at baseline among CHIM participants by age at challenge, sex, or subsequent enteric  
362 fever diagnosis (Supplementary Table 19, Supplementary Table 20, Supplementary Figure 15).  
363 In an analysis including only the 28 MGC classes that were identified as negatively associated  
364 with typhoid in both Malawi and Bangladesh, two were also negatively associated with typhoid  
365 fever diagnosis in CHIM participants: an “Rnf\_complex.Glycine\_cleavage.succinate2propionate”  
366 MGC (coefficient = -3.4, q-value = 0.22) and an “Rnf\_complex” MGC (coefficient = -6.2, q-value  
367 = 0.22) (Supplementary Figure 16, full results available in Supplementary Table 23). None of  
368 the 28 MGC classes tested were associated with paratyphoid fever or a combination of both  
369 typhoid and paratyphoid fever. We investigated whether any of the species associated with  
370 typhoid in both Malawi and Bangladesh were associated with susceptibility to typhoid and/or  
371 paratyphoid fever in the CHIM cohort; none of them were (see Figure 2). All four species that  
372 were associated with typhoid fever in the endemic cohorts were not detected in the majority of  
373 samples from the CHIM (Supplementary Table 29).

## 374 Analysis of high-Vi participants

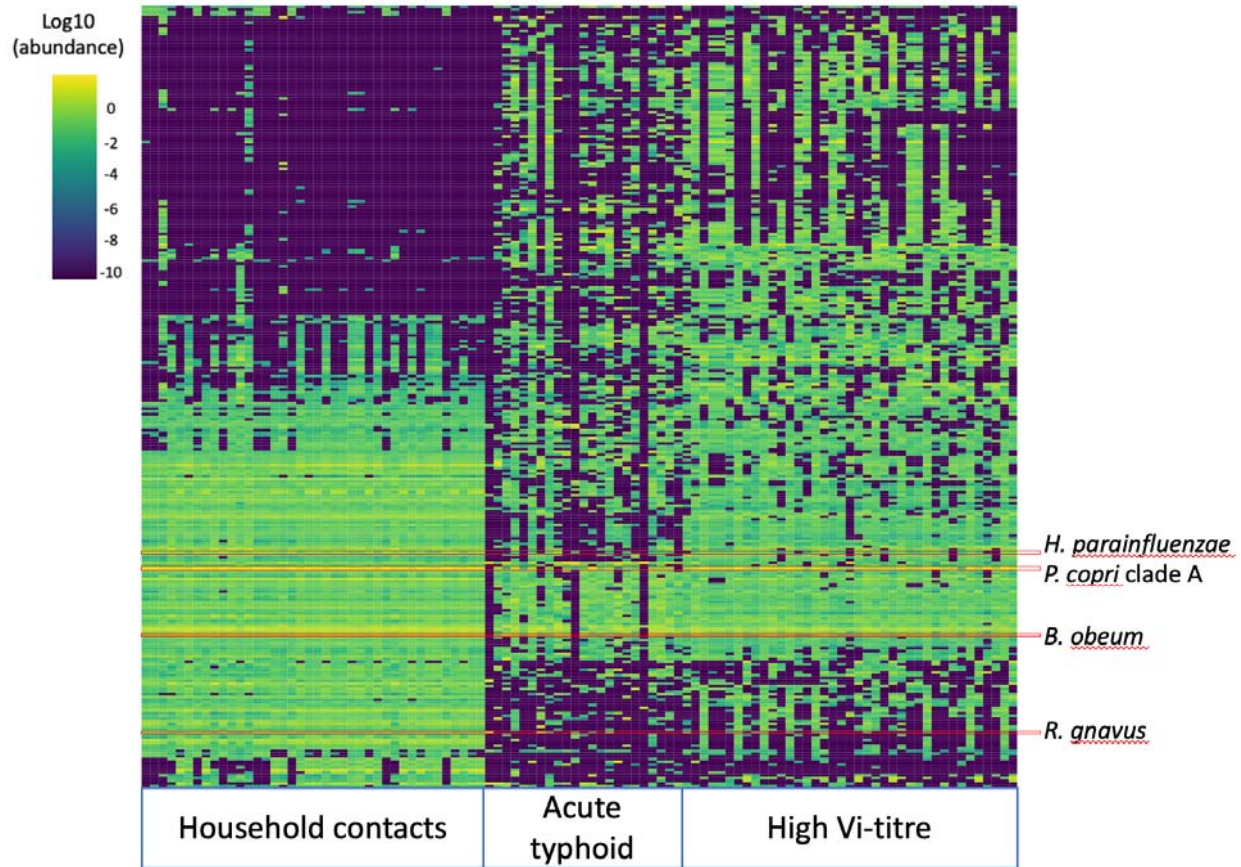
375 High-Vi participants may represent asymptomatic gall-bladder carriers, or individuals with recent  
376 exposure or sub-clinical infection, either of whom may be a source in transmission. Detection of  
377 carriers is important for typhoid fever control, and will remain so even as disease incidence  
378 reduces due to vaccination and improvements in WASH, therefore we sought to explore the  
379 microbiome signature of this group. Samples from Bangladesh were not included in this  
380 analysis, as laboratory processing of the high Vi-titre participant samples from Bangladesh was  
381 not consistent with the other sites or participant groups. Using PERMANOVA, participant group  
382 was significantly associated with beta diversity in both countries (age and sex were not  
383 significant, Supplementary Table 11, Supplementary Table 12). Participant group explained  
384 greater variance in the Malawi cohort ( $R^2$  0.25, FDR=0.01) than Nepal ( $R^2$  0.07, FDR=0.01,

385 Supplementary Table 11, Supplementary Table 12,



386

387 Supplementary Figure 10). The three participant groups have distinct beta-diversity signatures,  
388 with high-Vi individuals closer to typhoid patients than to household contacts (Figure 4). In the  
389 Malawi cohort, 125 bacterial species significantly differed between household contacts and high  
390 Vi-titre individuals (Supplementary Table 13), and 41 of these also significantly differed between  
391 household contacts and typhoid fever (Supplementary Table 21). These 41 species include *H.*  
392 *parainfluenzae*, *Blautia obeum*, and *Ruminococcus gnavus* (all less prevalent in acute typhoid  
393 and high-Vi individuals than household contacts, Supplementary Figure 11). Amongst Nepal  
394 samples, only one species significantly differed between household controls and high-Vi  
395 individuals (the Firmicutes SGB GGB9790 SGB15413). There were no species associated with  
396 household contacts compared with typhoid patients from Nepal, and SGB15413 did not differ  
397 between these groups (Supplementary Figure 12).



398  
399 *Figure 4: Heatmap of the abundance of the 400 most abundant species in household contacts, acute typhoid fever*  
400 *cases and high Vi-titre participants from Malawi. The columns are sorted by participant group, rows are sorted by*  
401 *hierarchical clustering across all samples.*

402 The combined relative abundance of species only described as species genome bins (SGBs)  
403 was significantly lower in household contacts in Malawi (13.9%), compared with both typhoid  
404 fever patients (34.8%,  $P=0.012$ ) and high Vi-titre participants (47.1%,  $P=2.2 \times 10^{-16}$ ) in this setting  
405 (Supplementary Figure 13). The 50 SGBs with the highest summed abundance across all  
406 participant types in Malawi belonged to Firmicutes ( $n = 41$ ), Actinobacteria ( $n = 4$ ),  
407 Bacteroidetes ( $n = 3$ ), and Proteobacteria ( $n = 2$ ) (Supplementary Table 22). The most common  
408 families of the 50 most abundant SGBs were Oscillospiraceae ( $n = 13$ ), Lachnospiraceae ( $n =$   
409  $7$ ), and Clostridiaceae ( $n = 4$ ) (Supplementary Table 22). In Nepal, high Vi-titre individuals had  
410 lower SGB relative abundance than acute typhoid cases (16.8% vs 29.9%,  $p = 0.03$ ,  
411 Supplementary Figure 13).

## 412 AMR genes

413 We recently reported AMR genotypes and phenotypes for *S. Typhi* isolated from acute typhoid  
414 fever cases in Bangladesh, Malawi, and Nepal (Dyson et al. 2024). Quinolone resistance was  
415 common in Bangladesh and Nepal but rare in Malawi; here we saw a similar pattern reflected in  
416 the gut microbiomes, with 2% quinolone resistance in Malawi, 30% in Bangladesh and 15% in  
417 Nepal (only mobile genetic element encoded quinolone determinants were analysed in the  
418 metagenomic data, Supplementary Table 14). Macrolide resistance was identified in one *S.*  
419 *Typhi* isolate from Bangladesh (0.6%) but not in Nepal or Malawi, here we found higher rates of  
420 macrolide resistance in microbiomes from individuals in Bangladesh (38%) and Nepal (35%)  
421 and lower in Malawi (11%). For the older drugs, *S. Typhi* isolates from Malawi had near-  
422 universal resistance to older sulfonamides and tetracyclines, and this was mirrored in high rates  
423 of resistance genes to these drugs in the microbiome samples (92% sulfonamides, 52%  
424 tetracycline). ESBLs were not detected in any *S. Typhi* isolates but were common in the  
425 microbiomes in Nepal (17%) and Bangladesh (9%); less so in Malawi (3%).

426

427 The proportion of samples with macrolide and trimethoprim resistance genes that have been  
428 observed in *S. Typhi* was significantly higher in participants with acute typhoid fever than in  
429 household contacts or high Vi-titre participants (macrolides = 42%, 14%, 22% respectively, Chi-  
430 square test p-value =  $4.4 \times 10^{-5}$ ; trimethoprim = 32%, 12%, 20% respectively, Chi-square test p-  
431 value = 0.005). There was no significant difference between participant types in the proportion  
432 of samples with resistance genes to any other drug classes. There was no statistically  
433 significant association between prior reported antibiotic usage and the number of AMR genes  
434 (Wilcoxon-rank sum P-value = 0.52) or the number of AMR gene classes (Wilcoxon Rank Sum  
435 P-value = 0.56) in typhoid fever patients across all sites (Supplementary Figure 14).

## 436 Discussion

437 In this study, we examined the relationship between the stool microbiome and typhoid fever in  
438 three settings with endemic disease. Our analyses identified four microbial species (Figure 2),  
439 linked to anaerobic fermentation and SCFA metabolism (Table 2), that differentiated typhoid  
440 fever patients from household contacts in Bangladesh and Malawi. While these taxa were not  
441 found in the UK-based CHIM participants, a different MGC with a potential link to SCFA  
442 metabolism was higher in participants who were not susceptible to typhoid fever. Looking at the  
443 abundance of different MGC types (as opposed to specific MGCs) we found four types of MGC  
444 involved in SCFA metabolism that were negatively associated with typhoid fever in Malawi, and  
445 one in Bangladesh. Overall, our data support a protective role for SCFA-producing microbes,  
446 although with our study design it is not possible to deconvolute the impact of the microbiome on  
447 typhoid from the impact of typhoid on the microbiome.

448  
449 The strengths of our study include a larger sample size than previous investigations of the  
450 interaction between typhoid fever and the microbiome, and a multi-site study design to increase  
451 generalisability. In contrast to previous studies of the microbiome and typhoid fever, we used  
452 shotgun metagenomics to characterise the gut flora, enabling in depth functional analysis and  
453 investigation of AMR genes. Notably, using the same methodology to analyse participants from  
454 different countries, most of the taxa we associated with typhoid fever differed between locations.  
455 This suggests that susceptibility to disease in different human populations may be modified by  
456 different species, which could hamper the generalisability of study findings between populations.  
457 It is notable that the most consistent microbial signature for disease susceptibility, identified  
458 across multiple study populations with small sample sizes, was a functional signature  
459 (specifically gene clusters associated with SCFA metabolism) rather than any specific taxa that  
460 perform this function.

461  
462 One of the key limitations of our study is the lack of age and sex matching between the typhoid  
463 fever and household contact groups. The age and sex composition of the household controls  
464 reflects the occupants of the household during the daytime visits of the study workers. This  
465 discrepancy may introduce bias, as age and sex are known to influence the composition and  
466 function of the microbiome (Yatsunenکو et al. 2012). Although these variables were included in  
467 the statistical analyses, the lack of matching weakens our findings. Our use of a case-control  
468 study design in the endemic countries generated numerous hypotheses for subsequent

469 research, but it does not prove causal relationships. Additionally, we did not collect dietary  
470 information from participants. Diet is a major determinant of microbiome composition and  
471 function, and variations in dietary habits could confound the associations we observed  
472 (Bourdeau-Julien et al. 2023). Lastly, accounting for the effect of antibiotics on the microbiome  
473 in these cohorts presents a complex challenge, as it can significantly alter microbiome  
474 composition and potentially mask or mimic associations with typhoid fever. These challenges  
475 could largely be addressed using CHIM studies. Unfortunately, the only available CHIM data  
476 was from a different study population (in the UK) and with a small sample size (n=13 exposed to  
477 *S. Typhi*). Use of larger high-income country CHIMs and development of CHIMs in populations  
478 from settings with endemic disease would be helpful to better elucidate specific microbial  
479 signatures of protection.

480  
481 Our use of shotgun metagenomics enabled us to also investigate the prevalence of AMR genes  
482 associated with resistance in *S. Typhi* across the three sites and participant groups. Macrolide  
483 and trimethoprim resistance genes were more common in acute typhoid cases compared with  
484 the household controls and high Vi-titre participants, highlighting that typhoid and associated  
485 antimicrobial usage imposes a selective pressure on the gut microbiome. This supports the idea  
486 that reducing disease via immunisation could reduce AMR beyond just *S. Typhi*. Higher levels of  
487 resistance to sulphonamides in Malawi likely reflects the common use of trimethoprim-  
488 sulfamethoxazole in HIV/AIDS programs (MacPherson et al. 2022), while higher microbiome  
489 prevalence of acquired ESBL and fluoroquinolone-resistance genes in Bangladesh than Malawi  
490 reflects the local epidemiology (e.g. recent studies of blood stream infections show that in  
491 Bangladesh, 72% and 75% were resistant to ciprofloxacin and third-generation cephalosporins  
492 respectively, compared with 31% and 30% in Malawi) (Musicha et al. 2017; Ahmed et al. 2017).  
493 The gut microbiome prevalence of resistance genes followed a similar pattern to the prevalence  
494 of resistance genes in *S. Typhi* observed from these sites (Dyson et al. 2024) for tetracycline,  
495 sulphonamides and quinolones, which likely reflects a shared evolutionary pressure on the  
496 isolates and the microbiome. The fact that non-ESBL beta-lactamases were identified in fewer  
497 metagenomes than ESBL beta-lactamases is because we only counted beta-lactamase  
498 encoding genes that are commonly found in *S. Typhi*.

499  
500 Zhang et al. investigated 16S community profile and metatranscriptome features associated  
501 with susceptibility to typhoid fever in a CHIM (Zhang et al. 2018). One of their primary findings  
502 was that the archaeal genus *Methanobrevibacter* was enriched in people who were challenged



503 with *S. Typhi* but did not develop disease. In contrast, we only identified one association with a  
504 *Methanobrevibacter* species (*M. smithii*); a positive association with typhoid fever in Malawi.  
505 Furthermore, Zhang et al., identified that *Prevotella* was higher in people who developed typhoid  
506 fever, in contrast to our findings that it was negatively associated with typhoid fever in natural  
507 infections in endemic settings. One source of these discrepancies could be that Zhang et al.  
508 employed 16S, while we used shotgun metagenomics. Haak et al. observed more SCFA  
509 producing bacteria in, in both healthy control and febrile but non-typhoid fever participants in  
510 their study in Bangladesh compared with typhoid fever patients, and higher faecal load of  
511 SCFAs in controls than any febrile group (Haak et al. 2020), which corresponds well with our  
512 findings. It has also been shown that higher SCFAs in an acidic environment, and a strict  
513 anaerobic environment, can inhibit the growth of Enterobacteriaceae such as *Salmonella* via  
514 both direct and indirect mechanisms (Byndloss et al. 2017; Jacobson et al. 2018; Rogers,  
515 Tsolis, and Bäumler 2021). Recently, higher relative abundance of butyrate producing bacteria  
516 was associated with a reduced risk of hospitalisation for infections in a prospective study carried  
517 out in high income European countries (Kullberg et al. 2024). Two MGC types positively  
518 associated with typhoid fever in Malawi were molybdopterin dependent oxidoreductase and  
519 propanediol utilisation microcompartments, both of which enable growth in the inflamed gut  
520 (Faber et al. 2017; Zhu et al. 2018), suggesting that the microbiota of typhoid fever participants  
521 in Malawi may be in a state of dysbiosis. Arginine to putrescine was the only MGC type  
522 associated with health in both Bangladesh and Malawi, polyamines such as putrescine promote  
523 gut barrier integrity (Rao, Xiao, and Wang 2020), and can act as immunomodulators (Proietti et  
524 al. 2020).

525

526 Our findings from the STRATAA cohorts can be interpreted from two perspectives: i) the  
527 microbiota protecting against typhoid and, ii) typhoid causing microbiota changes. In contrast,  
528 the CHIM study design enables us to specifically assess whether microbiota present prior to  
529 pathogen exposure are associated with the outcome of that exposure (i.e. developing disease  
530 or not). Unfortunately, none of the taxa negatively associated with typhoid fever in the endemic  
531 settings were present in most of the CHIM participants, making it impossible to validate the  
532 association. It is well established that microbiome species composition differs between human  
533 populations, and particularly between those in high-income countries and low-and-middle-  
534 income countries (Gupta, Paul, and Dutta 2017). However, the metabolic gene cluster findings  
535 identified a recurring finding across the endemic settings and the CHIM; an association between  
536 species encoding SCFA metabolising genes and non-susceptibility to typhoid fever. While it

537 should be noted that the CHIM sample size was small, the fact that we identified a statistically  
538 significant difference supports the idea that the effect is quite strong. While our CHIM analyses  
539 lacked power, which is reflected in the high q-values obtained, the q-value for the SCFA MGC  
540 association was below the default maaslin2 threshold for significant findings.

541  
542 Both *P. copri* and *H. parainfluenzae*, which were significantly lower in typhoid fever patients  
543 compared with household contacts in both Bangladesh and Malawi, are associated with  
544 increased gut inflammation (Sohn et al. 2023; Larsen 2017). *P. copri* is thought to increase  
545 Th17 inflammation (Godinez et al. 2011) while *H. parainfluenzae* stimulates intestinal (IFN- $\gamma$ )+  
546 CD4+ T cells (Sohn et al. 2023), two mechanisms which play a key role in the response to  
547 *Salmonella* infections (Bao et al. 2000; Raffatellu et al. 2008). Increased inflammation could  
548 prime the host to respond more rapidly to pathogenic exposures, leading to enhanced control of  
549 infections. It is highly plausible that the gut microbiome plays a role in shaping the response of  
550 the immune system to pathogen challenge (Durack and Lynch 2019). This intriguing association  
551 needs further investigation, as the role of inflammation in enabling *Salmonella* to overcome  
552 colonisation resistance in mice is well established (Winter et al. 2010; Rogers, Tsois, and  
553 Bäumler 2021). Among the species negatively associated with typhoid fever in Malawi only was  
554 *Ruminococcus gnavus*, which could influence susceptibility to enteric infection via IgA  
555 stimulation (Bunker et al. 2019), protects against enteropathogenic *E. coli* (McGrath et al. 2022),  
556 stimulates host tryptophan catabolism (Hoffmann et al. 2016) (*S. Typhi* requires tryptophan to  
557 grow in macrophages (Blohmke et al. 2016)), and produces secondary bile acids including  
558 chenodeoxycholic acid and iso-LCA that have anti-virulence effects on *Salmonella* (Lee et al.  
559 2013; Yang, Stein, and Hang 2023).

560  
561 Direction of causality cannot be determined from our study design, and a murine model of  
562 *Salmonella* Typhimurium infection recently reported shifts in gut microbiome composition,  
563 including a reduction in *Ruminococcaceae* taxa associated with acetate and butyrate  
564 production, following infection (Rogers et al. 2024). It is therefore plausible that the microbiome  
565 is modified in people suffering from typhoid fever. Gut disruption is known to alter the gut  
566 microbiome, for example, colorectal cancer patients from Morocco and Kenya had reduced *P.*  
567 *copri* in their gut, (Allali et al. 2018; Obuya et al. 2022). Potential triggers for microbiome  
568 alterations in typhoid fever could include antibiotic exposure, dietary changes or anorexia due to  
569 sickness, *S. Typhi*-induced malabsorption in the small intestine resulting in alterations to the  
570 nutrient composition within the large intestine, and the direct impact of fever on microbiome

571 composition as the increase in temperature could favour the growth of particular bacterial  
572 species (Chuttani, Jain, and Misra 1971; Huus and Ley 2021).

573

574 We cannot be certain about the exact cause of higher levels of anti-Vi antibodies in the high Vi-  
575 titre participants. Potential sources of immune stimulation include recent asymptomatic *S. Typhi*  
576 exposure/infection, exposure/infection with *Citrobacter freundii* which can be Vi-antigen positive,  
577 or chronic *S. Typhi* carriage. It is striking that there was a clear divergence in microbiota profile  
578 between these participants and acute cases and household contacts in Malawi, as this suggests  
579 that there is an interaction between the cause of the high Vi-titre and the gut microbiota. The 41  
580 species that were significantly lower in both typhoid fever cases and high Vi-titre participants  
581 included the potentially immune-modulatory *H. parainfluenzae* (Sohn et al. 2023), the bile acid  
582 modifying *B. obeum* (formerly *Ruminococcus obeum*), and *R. gnavus*. Notably, it has been  
583 demonstrated that bile salt hydrolases encoded by *B. obeum* can inhibit *Vibrio cholerae*  
584 virulence gene activation and colonization (Alavi et al. 2020), and it is intriguing to hypothesise a  
585 similar mechanism might protect against *S. Typhi* gallbladder carriage and/or systemic infection.  
586 The influence of these species on susceptibility to *S. Typhi* infection, gallbladder carriage, and  
587 immune-reactivity should be investigated further.

588

## 589 Conclusions

590 We found that typhoid fever patients in Malawi and Bangladesh display distinct microbiome  
591 signatures compared to household contacts, marked by lower abundance of SCFA producers  
592 and inflammation-related species. The negative association between SCFA producing genes  
593 and typhoid fever susceptibility was also replicated to some extent in our UK-based challenge  
594 study. The differences in species composition in the microbiota of these distinct cohorts make  
595 direct comparison and therefore validation difficult, highlighting the importance of establishing  
596 challenge studies in endemic settings to directly address important mechanistic questions.

## 597 Data availability

598 The code used in the analysis of these data is available on github -  
599 [https://github.com/flashton2003/STRATAA\\_metagenomics](https://github.com/flashton2003/STRATAA_metagenomics). Sequencing data for this project are  
600 available at the European Nucleotide Archive, project accessions PRJEB14050 and  
601 PRJEB22175.

## 602 Acknowledgements

603 We thank all the STRATAA participants for their willingness to take part in this research. We  
604 also acknowledge the sequencing and pathogen informatics teams at the Wellcome Sanger  
605 Institute for sequencing and data processing, and Zoe Dyson for assisting with sequence data  
606 transfer. We would like to acknowledge Ndaru Jambo, Andreas Bäumlner, and Renee Tsohis for  
607 helpful discussions. KA, SK, NRT, OS were funded by the Wellcome Trust (220540/Z/20/A). For  
608 the purpose of open access, the authors have applied a CC-BY public copyright licence to any  
609 author-accepted manuscript version arising from this submission. This research was funded by  
610 the Wellcome Trust (STRATAA grant number 106158/Z/14/Z, and core funding to the Wellcome  
611 Sanger Institute, grant number 206194) and the Bill & Melinda Gates Foundation (grant number  
612 OPP1141321). MAG, ACC, and PMA were supported by a research professorship  
613 (NIHR300039) from the National Institute for Health and Care Research, UK Department of  
614 Health and Social Care. GD is supported by the Health@InnoHK, Innovation Technology  
615 Commission Funding. MMG is supported by the NIHR Imperial Biomedical Research Centre  
616 and the Wellcome Trust (224029/Z/21/Z).

617  
618 Members of the STRATAA study group are Christoph Blohmke, Yama Farooq, Jennifer Hill,  
619 Nhu Tran Hoang, Tikhala Makhaza Jere, Harrison Msuku, Tran Vu Thieu Nga, Rose Nkhata,  
620 Sadia Isfat Ara Rahman, Nazia Rahman, Neil J Saad, Trinh Van Tan, Deus Thindwa, Merryn  
621 Voysey, and Richard Wachepa. Their affiliations are: Malawi-Liverpool-Wellcome Programme,  
622 Blantyre, Malawi (Tikhala Makhaza Jere, Harrison Msuku, Rose Nkhata, Deus Thindwa,  
623 Richard Wachepa); International Centre for Diarrhoeal Disease Research, Dhaka, Bangladesh  
624 (Sadia Isfat Ara Rahman, Nazia Rahman); Oxford Vaccine Group, Department of Paediatrics,  
625 University of Oxford, and the NIHR Oxford Biomedical Research Centre, Oxford, UK (Christoph  
626 Blohmke, Yama Farooq, Jennifer Hill, Merryn Voysey); The Hospital for Tropical Diseases,  
627 Wellcome Trust Major Overseas Programme, Oxford University Clinical Research Unit, Ho Chi

628 Minh City, Viet Nam (Nhu Tran Hoang, Tran Vu Thieu Nga, Trinh Van Tan); Department of  
629 Epidemiology of Microbial Diseases and the Public Health Modeling Unit, Yale School of Public  
630 Health, Yale University, New Haven, CT, USA (Neil J Saad)

631

632

633

## 634 Author contributions

635 Philip M. Ashton – conceptualisation, data curation, formal analysis, investigation, methodology,  
636 resources, software, visualisation, writing – original draft preparation.

637 Leonardos Mageiros - conceptualisation, data curation, formal analysis, investigation,  
638 methodology, software, writing – review and editing.

639 James Meiring - data curation, investigation, methodology, writing – review and editing.

640 Angeziwa Chunga Chirambo – data curation, investigation, writing – review and editing.

641 Farhana Khanam – data curation, investigation, writing – review and editing.

642 Happy Banda – investigation, writing – review and editing.

643 Abhilasha Karkey – investigation, supervision, writing – review and editing.

644 Sabina Dongol – data curation, investigation, writing – review and editing.

645 Lorena Preciado Llanes – conceptualisation, data curation, investigation, methodology, writing –  
646 review and editing.

647 Helena Thomaidis-Brears - investigation, methodology, writing – review and editing.

648 Malick Gibani – data curation, investigation, methodology, writing – review and editing.

649 Nazmul Hasan Rajib – investigation, writing – review and editing.

650 Nazia Rahman – investigation, writing – review and editing.

651 Prasanta Kumar Biswas – investigation, writing – review and editing.

652 Md Amirul Islam Bhuiyan – investigation, writing – review and editing.

653 Andrew Pollard – conceptualisation, funding acquisition, supervision, writing – review and  
654 editing.

655 Stephen Baker – funding acquisition, writing – review and editing.

656 Buddha Basnyat – funding acquisition, supervision, resources, writing – review and editing.

657 John D Clemens – funding acquisition, supervision, writing – review and editing.

658 Christiane Dolecek – funding acquisition, writing – review and editing.

659 Sarah J Dunstan – funding acquisition, writing – review and editing.

660 Gordon Dougan – conceptualisation, funding acquisition, methods, resources, writing – review  
661 and editing.  
662 Robert S. Heyderman – funding acquisition, writing – review and editing.  
663 Virginia E. Pitzer – funding acquisition, writing – review and editing.  
664 Firdausi Qadri – funding acquisition, supervision, resources, writing – review and editing.  
665 Melita A. Gordon – conceptualisation, funding acquisition, resources, supervision, writing –  
666 review and editing.  
667 Thomas C. Darton – conceptualisation, methodology, writing – review and editing.  
668 Kathryn E. Holt – conceptualisation, funding acquisition, resources, methodology, supervision,  
669 writing – original draft preparation, writing – review and editing.  
670

## 671 References

672 Ahmed, Dilruba, Md Ausrafuggaman Nahid, Abdullah Bashar Sami, Farhana Halim, Nasrin  
673 Akter, Tuhin Sadique, Md Sohel Rana, Md Shahriar Bin Elahi, and Md Mahbubur  
674 Rahman. 2017. 'Bacterial Etiology of Bloodstream Infections and Antimicrobial  
675 Resistance in Dhaka, Bangladesh, 2005–2014'. *Antimicrobial Resistance & Infection  
676 Control* 6 (1): 2. <https://doi.org/10.1186/s13756-016-0162-z>.  
677 Alavi, Salma, Jonathan D. Mitchell, Jennifer Y. Cho, Rui Liu, John C. Macbeth, and Ansel Hsiao.  
678 2020. 'Interpersonal Gut Microbiome Variation Drives Susceptibility and Resistance to  
679 Cholera Infection'. *Cell* 181 (7): 1533-1546.e13.  
680 <https://doi.org/10.1016/j.cell.2020.05.036>.  
681 Alcock, Brian P., William Huynh, Romeo Chalil, Keaton W. Smith, Amogelang R. Raphenya,  
682 Mateusz A. Wlodarski, Arman Edalatmand, et al. 2023. 'CARD 2023: Expanded  
683 Curation, Support for Machine Learning, and Resistome Prediction at the  
684 Comprehensive Antibiotic Resistance Database'. *Nucleic Acids Research* 51 (D1):  
685 D690–99. <https://doi.org/10.1093/nar/gkac920>.  
686 Allali, Imane, Noureddine Boukhatem, Leila Bouguenouch, Hanaa Hardi, H. Abir Boudouaya, M.  
687 Belen Cadenas, Karim Ouldin, Saaïd Amzazi, M. Andrea Azcarate-Peril, and Hassan  
688 Ghazal. 2018. 'Gut Microbiome of Moroccan Colorectal Cancer Patients'. *Medical  
689 Microbiology and Immunology* 207 (3): 211–25. <https://doi.org/10.1007/s00430-018-0542-5>.  
690  
691 Argimón, Silvia, Corin A. Yeats, Richard J. Goater, Khalil Abudahab, Benjamin Taylor, Anthony  
692 Underwood, Leonor Sánchez-Busó, et al. 2021. 'A Global Resource for Genomic  
693 Predictions of Antimicrobial Resistance and Surveillance of Salmonella Typhi at  
694 Pathogenwatch'. *Nature Communications* 12 (1): 2879. <https://doi.org/10.1038/s41467-021-23091-2>.  
695  
696 Bao, S, K W Beagley, M P France, J Shen, and A J Husband. 2000. 'Interferon- $\gamma$  Plays a Critical  
697 Role in Intestinal Immunity against Salmonella Typhimurium Infection'. *Immunology* 99  
698 (3): 464–72. <https://doi.org/10.1046/j.1365-2567.2000.00955.x>.  
699 Belkaid, Yasmine, and Timothy Hand. 2014. 'Role of the Microbiota in Immunity and  
700 Inflammation'. *Cell* 157 (1): 121–41. <https://doi.org/10.1016/j.cell.2014.03.011>.

- 701 Blanco-Míguez, Aitor, Francesco Beghini, Fabio Cumbo, Lauren J. McIver, Kelsey N.  
702 Thompson, Moreno Zolfo, Paolo Manghi, et al. 2023. 'Extending and Improving  
703 Metagenomic Taxonomic Profiling with Uncharacterized Species Using MetaPhlan 4'.  
704 *Nature Biotechnology* 41 (11): 1633–44. <https://doi.org/10.1038/s41587-023-01688-w>.
- 705 Blohmke, Christoph J., Thomas C. Darton, Claire Jones, Nicolas M. Suarez, Claire S.  
706 Waddington, Brian Angus, Liqing Zhou, et al. 2016. 'Interferon-Driven Alterations of the  
707 Host's Amino Acid Metabolism in the Pathogenesis of Typhoid Fever'. *Journal of*  
708 *Experimental Medicine* 213 (6): 1061–77. <https://doi.org/10.1084/jem.20151025>.
- 709 Bohnhoff, Marjorie, Barbara L. Drake, and C. Phillip Miller. 1954. 'Effect of Streptomycin on  
710 Susceptibility of Intestinal Tract to Experimental Salmonella Infection.' *Proceedings of*  
711 *the Society for Experimental Biology and Medicine* 86 (1): 132–37.  
712 <https://doi.org/10.3181/00379727-86-21030>.
- 713 Bourdeau-Julien, Isabelle, Sophie Castonguay-Paradis, Gabrielle Rochefort, Julie Perron,  
714 Benoît Lamarche, Nicolas Flamand, Vincenzo Di Marzo, Alain Veilleux, and Frédéric  
715 Raymond. 2023. 'The Diet Rapidly and Differentially Affects the Gut Microbiota and Host  
716 Lipid Mediators in a Healthy Population'. *Microbiome* 11 (1): 26.  
717 <https://doi.org/10.1186/s40168-023-01469-2>.
- 718 Bunker, Jeffrey J., Christoph Drees, Andrea R. Watson, Catherine H. Plunkett, Cathryn R.  
719 Nagler, Olaf Schneewind, A. Murat Eren, and Albert Bendelac. 2019. 'B Cell  
720 Superantigens in the Human Intestinal Microbiota'. *Science Translational Medicine* 11  
721 (507): eaau9356. <https://doi.org/10.1126/scitranslmed.aau9356>.
- 722 Byndloss, Mariana X., Erin E. Olsan, Fabian Rivera-Chávez, Connor R. Tiffany, Stephanie A.  
723 Cevallos, Kristen L. Lokken, Teresa P. Torres, et al. 2017. 'Microbiota-Activated PPAR-γ  
724 Signaling Inhibits Dysbiotic Enterobacteriaceae Expansion'. *Science* 357 (6351): 570–  
725 75. <https://doi.org/10.1126/science.aam9949>.
- 726 Chuttani, H. K., K. Jain, and R. C. Misra. 1971. 'Small Bowel in Typhoid Fever'. *Gut* 12 (9): 709–  
727 12.
- 728 Constantinides, Bede, Martin Hunt, and Derrick W Crook. 2023. 'Hostile: Accurate  
729 Decontamination of Microbial Host Sequences'. *Bioinformatics* 39 (12): btad728.  
730 <https://doi.org/10.1093/bioinformatics/btad728>.
- 731 Darton, Thomas C, James E Meiring, Susan Tonks, Md Arifuzzaman Khan, Farhana Khanam,  
732 Mila Shakya, Deus Thindwa, et al. 2017. 'The STRATAA Study Protocol: A Programme  
733 to Assess the Burden of Enteric Fever in Bangladesh, Malawi and Nepal Using  
734 Prospective Population Census, Passive Surveillance, Serological Studies and  
735 Healthcare Utilisation Surveys'. *BMJ Open* 7 (6): e016283.  
736 <https://doi.org/10.1136/bmjopen-2017-016283>.
- 737 Durack, Juliana, and Susan V. Lynch. 2019. 'The Gut Microbiome: Relationships with Disease  
738 and Opportunities for Therapy'. *The Journal of Experimental Medicine* 216 (1): 20–40.  
739 <https://doi.org/10.1084/jem.20180448>.
- 740 Dyson, Zoe A., Philip M. Ashton, Farhana Khanam, Angeziwa Chunga Chirambo, Mila Shakya,  
741 James E. Meiring, Susan Tonks, et al. 2024. 'Pathogen Diversity and Antimicrobial  
742 Resistance Transmission of Salmonella Enterica Serovars Typhi and Paratyphi A in  
743 Bangladesh, Nepal, and Malawi: A Genomic Epidemiological Study'. *The Lancet*  
744 *Microbe* 0 (0). [https://doi.org/10.1016/S2666-5247\(24\)00047-8](https://doi.org/10.1016/S2666-5247(24)00047-8).
- 745 Faber, Franziska, Parameth Thiennimitr, Luisella Spiga, Mariana X. Byndloss, Yael Litvak, Sara  
746 Lawhon, Helene L. Andrews-Polymenis, Sebastian E. Winter, and Andreas J. Bäumlner.  
747 2017. 'Respiration of Microbiota-Derived 1,2-Propanediol Drives Salmonella Expansion  
748 during Colitis'. *PLoS Pathogens* 13 (1): e1006129.  
749 <https://doi.org/10.1371/journal.ppat.1006129>.
- 750 Gibani, Malick M., Celina Jin, Sonu Shrestha, Maria Moore, Lily Norman, Merryn Voysey,  
751 Elizabeth Jones, et al. 2020. 'Homologous and Heterologous Re-Challenge with

- 752 Salmonella Typhi and Salmonella Paratyphi A in a Randomised Controlled Human  
753 Infection Model'. *PLoS Neglected Tropical Diseases* 14 (10): e0008783.  
754 <https://doi.org/10.1371/journal.pntd.0008783>.
- 755 Godinez, Ivan, A. Marijke Keestra, Alanna Spees, and Andreas J. Bäumlér. 2011. 'The IL-23  
756 Axis in Salmonella Gastroenteritis'. *Cellular Microbiology* 13 (11): 1639–47.  
757 <https://doi.org/10.1111/j.1462-5822.2011.01637.x>.
- 758 Gupta, Vinod K., Sandip Paul, and Chitra Dutta. 2017. 'Geography, Ethnicity or Subsistence-  
759 Specific Variations in Human Microbiome Composition and Diversity'. *Frontiers in*  
760 *Microbiology* 8 (June):1162. <https://doi.org/10.3389/fmicb.2017.01162>.
- 761 Haak, Bastiaan W, Hanna K de Jong, Sarantos Kostidis, Martin Giera, Rapeephan R Maude,  
762 Rasheda Samad, Lalith Wijedoru, et al. 2020. 'Altered Patterns of Compositional and  
763 Functional Disruption of the Gut Microbiota in Typhoid Fever and Nontyphoidal Febrile  
764 Illness'. *Open Forum Infectious Diseases* 7 (7). <https://doi.org/10.1093/ofid/ofaa251>.
- 765 Hoffmann, Thomas W., Hang-Phuong Pham, Chantal Bridonneau, Camille Aubry, Bruno  
766 Lamas, Camille Martin-Gallausiaux, Marco Moroldo, et al. 2016. 'Microorganisms Linked  
767 to Inflammatory Bowel Disease-Associated Dysbiosis Differentially Impact Host  
768 Physiology in Gnotobiotic Mice'. *The ISME Journal* 10 (2): 460–77.  
769 <https://doi.org/10.1038/ismej.2015.127>.
- 770 Huus, Kelsey E., and Ruth E. Ley. 2021. 'Blowing Hot and Cold: Body Temperature and the  
771 Microbiome'. *mSystems* 6 (5): 10.1128/msystems.00707-21.  
772 <https://doi.org/10.1128/msystems.00707-21>.
- 773 Jacobson, Amanda, Lilian Lam, Manohary Rajendram, Fiona Tamburini, Jared Honeycutt,  
774 Trung Pham, Will Van Treuren, et al. 2018. 'A Gut Commensal-Produced Metabolite  
775 Mediates Colonization Resistance to Salmonella Infection'. *Cell Host & Microbe* 24 (2):  
776 296-307.e7. <https://doi.org/10.1016/j.chom.2018.07.002>.
- 777 Khanam, Farhana, Thomas C. Darton, James E. Meiring, Protup Kumer Sarker, Prasanta  
778 Kumar Biswas, Md Amirul Islam Bhuiyan, Nazmul Hasan Rajib, et al. 2021. 'Salmonella  
779 Typhi Stool Shedding by Patients With Enteric Fever and Asymptomatic Chronic  
780 Carriers in an Endemic Urban Setting'. *The Journal of Infectious Diseases* 224 (12 Suppl  
781 2): S759–63. <https://doi.org/10.1093/infdis/jiab476>.
- 782 Kullberg, Robert F J, Irina Wikki, Bastiaan W Haak, Anni Kauko, Henrike Galenkamp, Hessel  
783 Peters-Sengers, Joe M Butler, et al. 2024. 'Association between Butyrate-Producing Gut  
784 Bacteria and the Risk of Infectious Disease Hospitalisation: Results from Two  
785 Observational, Population-Based Microbiome Studies'. *The Lancet Microbe* 5 (9):  
786 100864. [https://doi.org/10.1016/S2666-5247\(24\)00079-X](https://doi.org/10.1016/S2666-5247(24)00079-X).
- 787 Larsen, Jeppe Madura. 2017. 'The Immune Response to Prevotella Bacteria in Chronic  
788 Inflammatory Disease'. *Immunology* 151 (4): 363–74. <https://doi.org/10.1111/imm.12760>.
- 789 Lee, Ja-Young, Hisashi Arai, Yusuke Nakamura, Satoru Fukiya, Masaru Wada, and Atsushi  
790 Yokota. 2013. 'Contribution of the 7 $\beta$ -Hydroxysteroid Dehydrogenase from  
791 Ruminococcus Gnavus N53 to Ursodeoxycholic Acid Formation in the Human Colon'.  
792 *Journal of Lipid Research* 54 (11): 3062–69. <https://doi.org/10.1194/jlr.M039834>.
- 793 Leshem, Avner, Timur Liwinski, and Eran Elinav. 2020. 'Immune-Microbiota Interplay and  
794 Colonization Resistance in Infection'. *Molecular Cell* 78 (4): 597–613.  
795 <https://doi.org/10.1016/j.molcel.2020.03.001>.
- 796 Libertucci, Josie, and Vincent B. Young. 2019. 'The Role of the Microbiota in Infectious  
797 Diseases'. *Nature Microbiology* 4 (1): 35–45. <https://doi.org/10.1038/s41564-018-0278-4>.
- 798 Lopez, Christopher A., Brittany M. Miller, Fabian Rivera-Chávez, Eric M. Velazquez, Mariana X.  
799 Byndloss, Alfredo Chávez-Arroyo, Kristen L. Lokken, Renée M. Tsois, Sebastian E.  
800 Winter, and Andreas J. Bäumlér. 2016. 'Virulence Factors Enhance Citrobacter  
801 Rodentium Expansion through Aerobic Respiration'. *Science (New York, N. Y.)* 353  
802 (6305): 1249–53. <https://doi.org/10.1126/science.aag3042>.

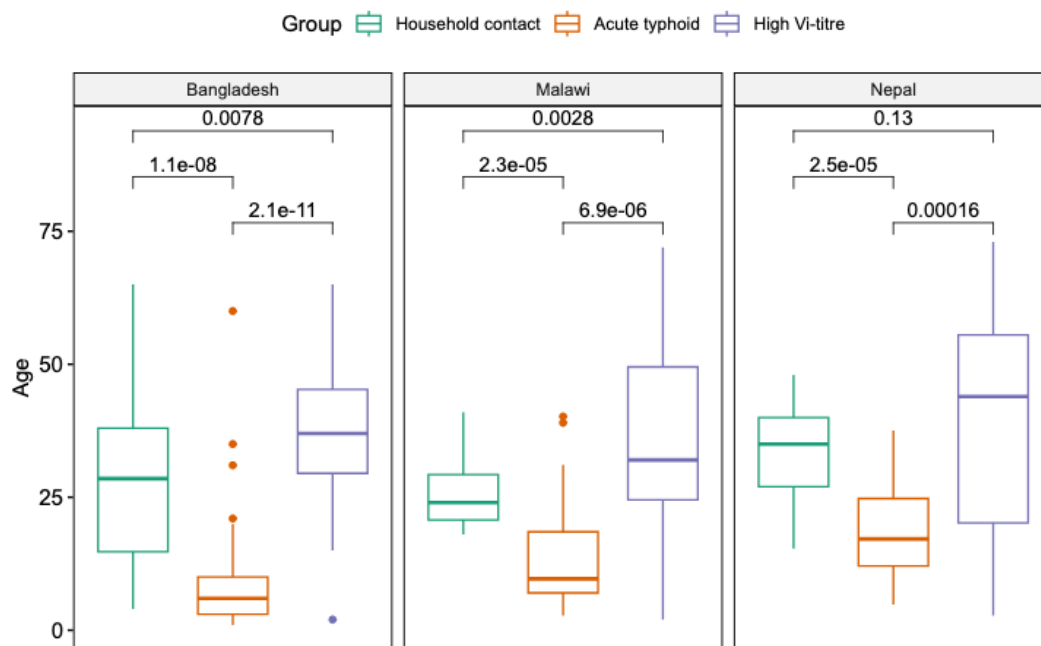


- 803 MacPherson, Eleanor E., Joanna Reynolds, Esnart Sanudi, Alexander Nkaombe, John  
804 Mankhomwa, Justin Dixon, and Clare I. R. Chandler. 2022. 'Understanding Antimicrobial  
805 Use in Subsistence Farmers in Chikwawa District Malawi, Implications for Public  
806 Awareness Campaigns'. *PLOS Global Public Health* 2 (6): e0000314.  
807 <https://doi.org/10.1371/journal.pgph.0000314>.
- 808 Mallick, Himel, Ali Rahnavard, Lauren J. McIver, Siyuan Ma, Yancong Zhang, Long H. Nguyen,  
809 Timothy L. Tickle, et al. 2021. 'Multivariable Association Discovery in Population-Scale  
810 Meta-Omics Studies'. *PLOS Computational Biology* 17 (11): e1009442.  
811 <https://doi.org/10.1371/journal.pcbi.1009442>.
- 812 McGrath, Conor J., Edgaras Laveckis, Andrew Bell, Emmanuelle Crost, Nathalie Juge, and  
813 Stephanie Schüller. 2022. 'Development of a Novel Human Intestinal Model to Elucidate  
814 the Effect of Anaerobic Commensals on Escherichia Coli Infection'. *Disease Models &  
815 Mechanisms* 15 (4): dmm049365. <https://doi.org/10.1242/dmm.049365>.
- 816 Meiring, James E., Farhana Khanam, Buddha Basnyat, Richelle C. Charles, John A. Crump,  
817 Frederic Debollut, Kathryn E. Holt, et al. 2023. 'Typhoid Fever'. *Nature Reviews Disease  
818 Primers* 9 (1): 1–18. <https://doi.org/10.1038/s41572-023-00480-z>.
- 819 Meiring, James E., Mila Shakya, Farhana Khanam, Merryn Voysey, Maile T. Phillips, Susan  
820 Tonks, Deus Thindwa, et al. 2021. 'Burden of Enteric Fever at Three Urban Sites in  
821 Africa and Asia: A Multicentre Population-Based Study'. *The Lancet Global Health* 9  
822 (12): e1688–96. [https://doi.org/10.1016/S2214-109X\(21\)00370-3](https://doi.org/10.1016/S2214-109X(21)00370-3).
- 823 Musicha, Patrick, Jennifer E Cornick, Naor Bar-Zeev, Neil French, Clemens Masesa, Brigitte  
824 Denis, Neil Kennedy, et al. 2017. 'Trends in Antimicrobial Resistance in Bloodstream  
825 Infection Isolates at a Large Urban Hospital in Malawi (1998–2016): A Surveillance  
826 Study'. *The Lancet Infectious Diseases* 17 (10): 1042–52. [https://doi.org/10.1016/S1473-3099\(17\)30394-8](https://doi.org/10.1016/S1473-3099(17)30394-8).
- 827  
828 Obuya, Sarah, Amr Elkholy, Nagavardhini Avuthu, Michael Behring, Prachi Bajpai, Sumit  
829 Agarwal, Hyung-Gyoon Kim, et al. 2022. 'A Signature of *Prevotella Copri* and  
830 *Faecalibacterium Prausnitzii* Depletion, and a Link with Bacterial Glutamate Degradation  
831 in the Kenyan Colorectal Cancer Patients'. *Journal of Gastrointestinal Oncology* 13 (5):  
832 2282–92. <https://doi.org/10.21037/jgo-22-116>.
- 833 Pascal Andreu, Victória, Hannah E. Augustijn, Koen van den Berg, Justin J. J. van der Hooft,  
834 Michael A. Fischbach, and Marnix H. Medema. 2021. 'BiG-MAP: An Automated Pipeline  
835 To Profile Metabolic Gene Cluster Abundance and Expression in Microbiomes'.  
836 *mSystems* 6 (5): e00937-21. <https://doi.org/10.1128/mSystems.00937-21>.
- 837 Pascal Andreu, Victòria, Hannah E. Augustijn, Lianmin Chen, Alexandra Zhernakova, Jingyuan  
838 Fu, Michael A. Fischbach, Dylan Dodd, and Marnix H. Medema. 2023. 'gutSMASH  
839 Predicts Specialized Primary Metabolic Pathways from the Human Gut Microbiota'.  
840 *Nature Biotechnology* 41 (10): 1416–23. <https://doi.org/10.1038/s41587-023-01675-1>.
- 841 Patel, Priyanka D., Pratiksha Patel, Yuanyuan Liang, James E. Meiring, Theresa Misiri, Felistas  
842 Mwakiseghile, J. Kathleen Tracy, et al. 2021. 'Safety and Efficacy of a Typhoid  
843 Conjugate Vaccine in Malawian Children'. *New England Journal of Medicine* 385 (12):  
844 1104–15. <https://doi.org/10.1056/NEJMoa2035916>.
- 845 Proietti, Elisa, Sofia Rossini, Ursula Grohmann, and Giada Mondanelli. 2020. 'Polyamines and  
846 Kynurenines at the Intersection of Immune Modulation'. *Trends in Immunology* 41 (11):  
847 1037–50. <https://doi.org/10.1016/j.it.2020.09.007>.
- 848 Qureshi, Sonia, Noshi Maria, Tabish Chawla, Junaid Iqbal, Abdul Momin Kazi, Mehreen Adnan,  
849 Aneeta Hotwani, et al. 2024. 'The Frequency and Associated Factors of Typhoid  
850 Carriage in Patients Undergoing Cholecystectomy for Gallbladder Disease in Pakistan: A  
851 Cross-Sectional Study'. *PLoS Neglected Tropical Diseases* 18 (6): e0011775.  
852 <https://doi.org/10.1371/journal.pntd.0011775>.

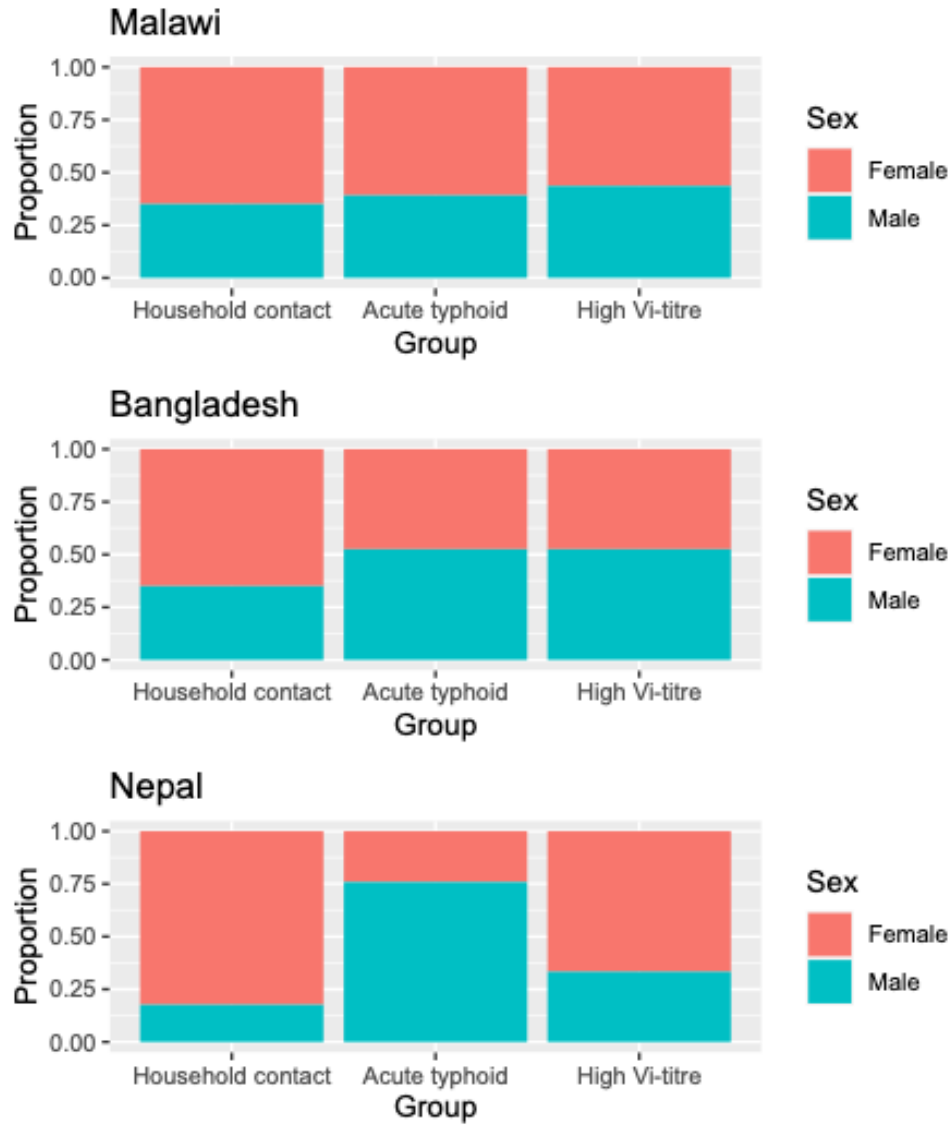
- 853 Raffatellu, Manuela, Renato L. Santos, David E. Verhoeven, Michael D. George, R. Paul  
854 Wilson, Sebastian E. Winter, Ivan Godinez, et al. 2008. 'Simian Immunodeficiency  
855 Virus-Induced Mucosal Interleukin-17 Deficiency Promotes Salmonella Dissemination  
856 from the Gut'. *Nature Medicine* 14 (4): 421–28. <https://doi.org/10.1038/nm1743>.
- 857 Rao, Jaladanki N., Lan Xiao, and Jian-Ying Wang. 2020. 'Polyamines in Gut Epithelial Renewal  
858 and Barrier Function'. *Physiology* 35 (5): 328–37.  
859 <https://doi.org/10.1152/physiol.00011.2020>.
- 860 Robbins, J. D., and J. B. Robbins. 1984. 'Reexamination of the Protective Role of the Capsular  
861 Polysaccharide (Vi Antigen) of Salmonella Typhi'. *The Journal of Infectious Diseases*  
862 150 (3): 436–49. <https://doi.org/10.1093/infdis/150.3.436>.
- 863 Rogers, Andrew W. L., Lauren C. Radlinski, Henry Nguyen, Connor R. Tiffany, Thaynara  
864 Parente Carvalho, Hugo L. P. Masson, Michael L. Goodson, et al. 2024. 'Salmonella Re-  
865 Engineers the Intestinal Environment to Break Colonization Resistance in the Presence  
866 of a Compositionally Intact Microbiota'. *Cell Host & Microbe* 32 (10): 1774-1786.e9.  
867 <https://doi.org/10.1016/j.chom.2024.07.025>.
- 868 Rogers, Andrew W. L., Renée M. Tsolis, and Andreas J. Bäumler. 2021. 'Salmonella versus the  
869 Microbiome'. *Microbiology and Molecular Biology Reviews: MMBR* 85 (1): e00027-19.  
870 <https://doi.org/10.1128/MMBR.00027-19>.
- 871 Shreiner, Andrew B., John Y. Kao, and Vincent B. Young. 2015. 'The Gut Microbiome in Health  
872 and in Disease'. *Current Opinion in Gastroenterology* 31 (1): 69–75.  
873 <https://doi.org/10.1097/MOG.0000000000000139>.
- 874 Sohn, Jiho, Lu Li, Lixia Zhang, Robert J. Genco, Karen L. Falkner, Hervé Tettelin, Aryn M.  
875 Rowsam, et al. 2023. 'Periodontal Disease Is Associated with Increased Gut  
876 Colonization of Pathogenic Haemophilus parainfluenzae in Patients with Crohn's  
877 Disease'. *Cell Reports* 42 (2): 112120. <https://doi.org/10.1016/j.celrep.2023.112120>.
- 878 Stanaway, Jeffrey D., Robert C. Reiner, Brigette F. Blacker, Ellen M. Goldberg, Ibrahim A.  
879 Khalil, Christopher E. Troeger, Jason R. Andrews, et al. 2019. 'The Global Burden of  
880 Typhoid and Paratyphoid Fevers: A Systematic Analysis for the Global Burden of  
881 Disease Study 2017'. *The Lancet Infectious Diseases* 19 (4): 369–81.  
882 [https://doi.org/10.1016/S1473-3099\(18\)30685-6](https://doi.org/10.1016/S1473-3099(18)30685-6).
- 883 Stecher, Bärbel, Riccardo Robbiani, Alan W. Walker, Astrid M. Westendorf, Manja Barthel,  
884 Marcus Kremer, Samuel Chaffron, et al. 2007. 'Salmonella Enterica Serovar  
885 Typhimurium Exploits Inflammation to Compete with the Intestinal Microbiota'. *PLOS*  
886 *Biology* 5 (10): e244. <https://doi.org/10.1371/journal.pbio.0050244>.
- 887 Steele, A. Duncan, Deborah C. Hay Burgess, Zoey Diaz, Megan E. Carey, and Anita K. M.  
888 Zaidi. 2016. 'Challenges and Opportunities for Typhoid Fever Control: A Call for  
889 Coordinated Action'. *Clinical Infectious Diseases: An Official Publication of the Infectious*  
890 *Diseases Society of America* 62 (Suppl 1): S4–8. <https://doi.org/10.1093/cid/civ976>.
- 891 Waddington, Claire S., Thomas C. Darton, Claire Jones, Kathryn Haworth, Anna Peters, Tessa  
892 John, Ben A. V. Thompson, et al. 2014. 'An Outpatient, Ambulant-Design, Controlled  
893 Human Infection Model Using Escalating Doses of Salmonella Typhi Challenge  
894 Delivered in Sodium Bicarbonate Solution'. *Clinical Infectious Diseases* 58 (9): 1230–40.  
895 <https://doi.org/10.1093/cid/ciu078>.
- 896 Winter, Sebastian E., Parameth Thiennimitr, Maria G. Winter, Brian P. Butler, Douglas L.  
897 Huseby, Robert W. Crawford, Joseph M. Russell, et al. 2010. 'Gut Inflammation  
898 Provides a Respiratory Electron Acceptor for Salmonella'. *Nature* 467 (7314): 426–29.  
899 <https://doi.org/10.1038/nature09415>.
- 900 Yang, Xinglin, Kathryn R. Stein, and Howard C. Hang. 2023. 'Anti-Infective Bile Acids Bind and  
901 Inactivate a Salmonella Virulence Regulator'. *Nature Chemical Biology* 19 (1): 91–100.  
902 <https://doi.org/10.1038/s41589-022-01122-3>.

- 903 Yatsunenکو, Tanya, Federico E. Rey, Mark J. Manary, Indi Trehan, Maria Gloria Dominguez-  
904 Bello, Monica Contreras, Magda Magris, et al. 2012. 'Human Gut Microbiome Viewed  
905 across Age and Geography'. *Nature* 486 (7402): 222–27.  
906 <https://doi.org/10.1038/nature11053>.  
907 Zhang, Yan, Arthur Brady, Cheron Jones, Yang Song, Thomas C. Darton, Claire Jones,  
908 Christoph J. Blohmke, et al. 2018. 'Compositional and Functional Differences in the  
909 Human Gut Microbiome Correlate with Clinical Outcome Following Infection with Wild-  
910 Type Salmonella Enterica Serovar Typhi'. *mBio* 9 (3): e00686-18.  
911 <https://doi.org/10.1128/mBio.00686-18>.  
912 Zhu, Wenhan, Maria G. Winter, Mariana X. Byndloss, Luisella Spiga, Breck A. Duerkop,  
913 Elizabeth R. Hughes, Lisa Büttner, et al. 2018. 'Precision Editing of the Gut Microbiota  
914 Ameliorates Colitis'. *Nature* 553 (7687): 208–11. <https://doi.org/10.1038/nature25172>.  
915  
916

## 917 Supplementary Figures



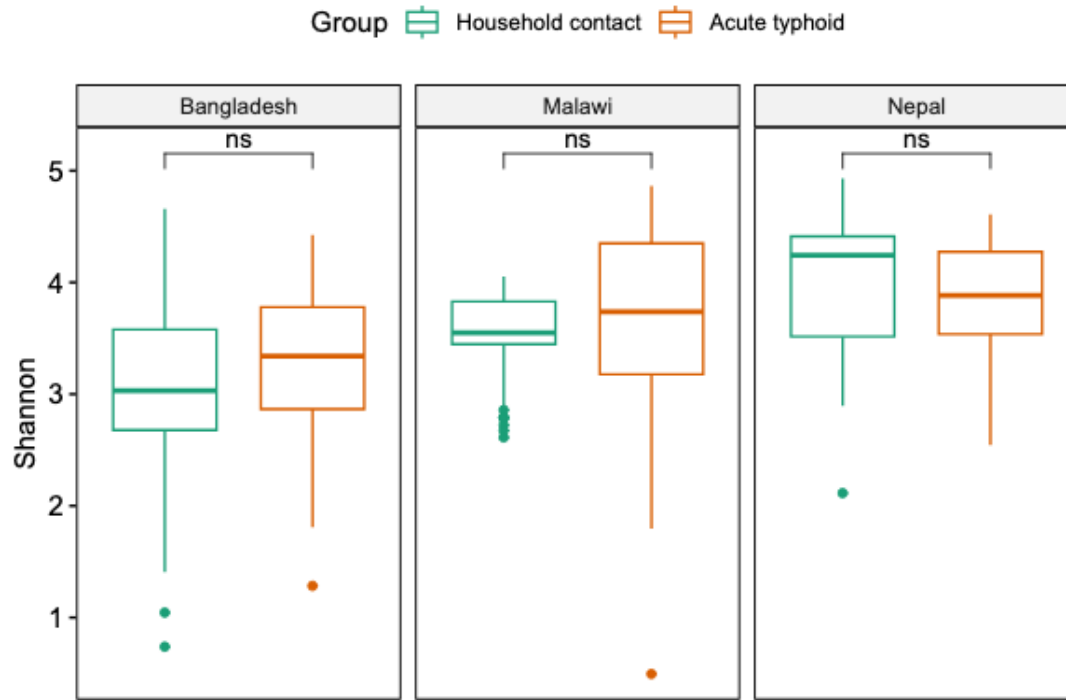
918  
919 *Supplementary Figure 1: Age distribution of participants in the healthy control, acute typhoid, and presumptive carrier*  
920 *groups, broken down by study site. Statistical annotations are the p-values resulting from Wilcoxon rank sum tests.*



921

922

*Supplementary Figure 2: Sex split of the different participant groups across the different sites.*

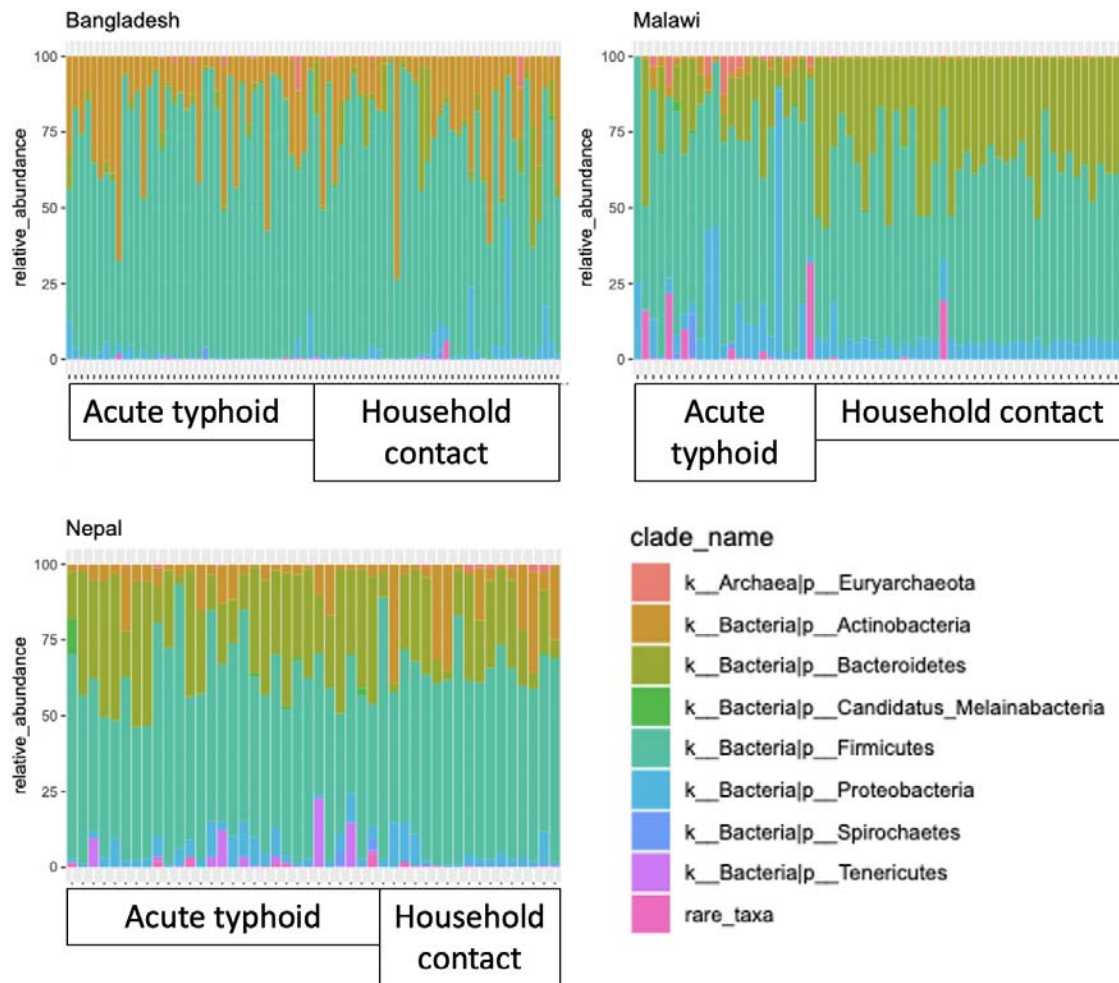


923  
924  
925

Supplementary Figure 3: Alpha diversity for acute typhoid fever patients and healthy household contacts for each endemic country study site.

926

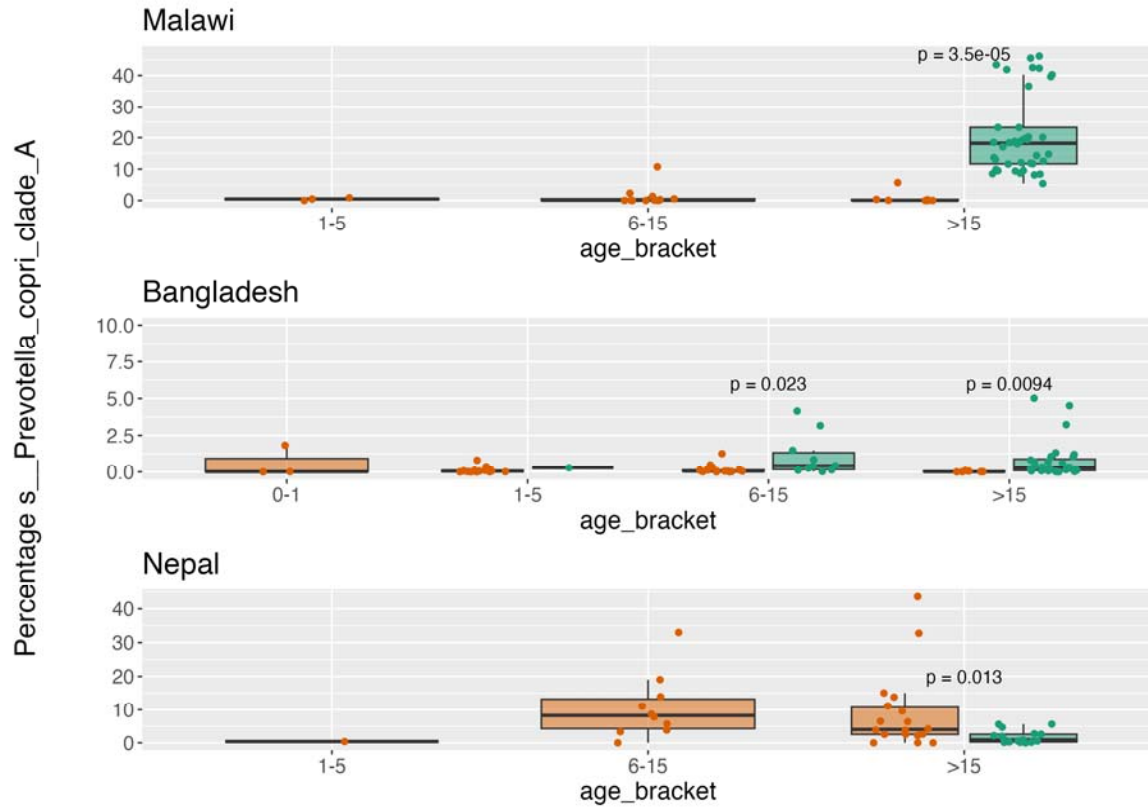
927



928  
929  
930

Supplementary Figure 4: Bar chart showing the prevalence of eight common phyla in acute typhoid patients and healthy household contacts, for each study site.

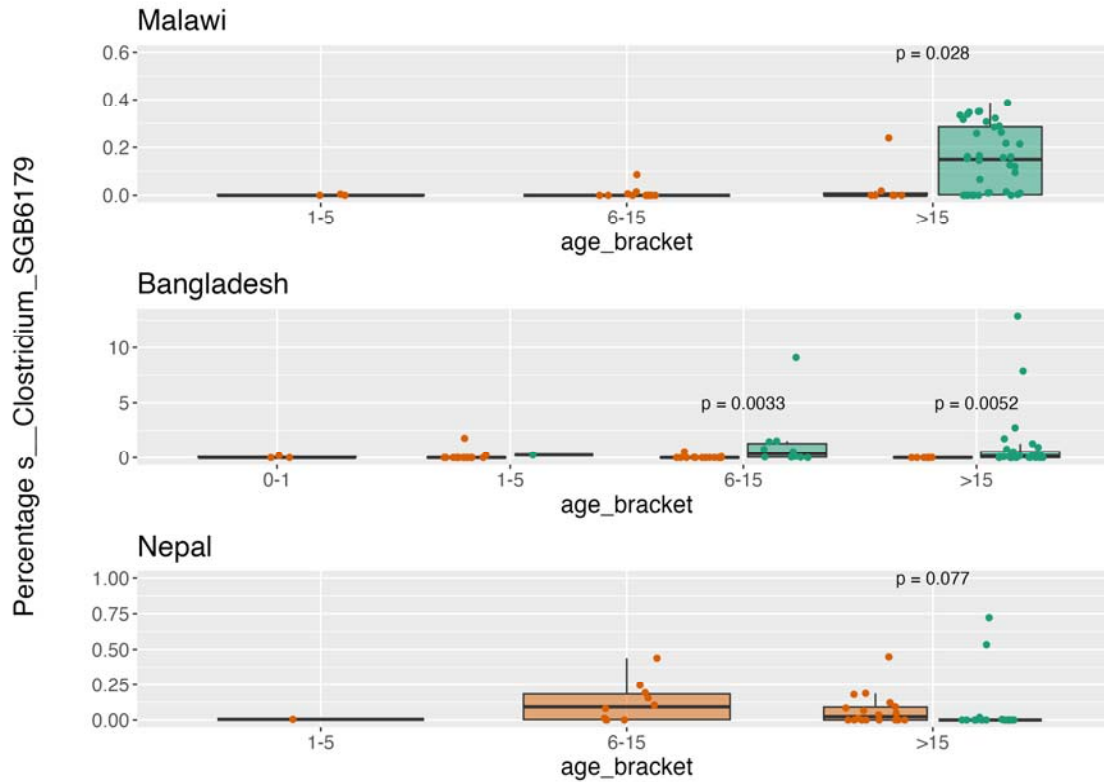
It is made available under a [CC-BY 4.0 International license](https://creativecommons.org/licenses/by/4.0/) .



931  
932 *Supplementary Figure 5: Prevalence of Prevotella copri clade A across age brackets in Malawi, Bangladesh, and*  
933 *Nepal.*

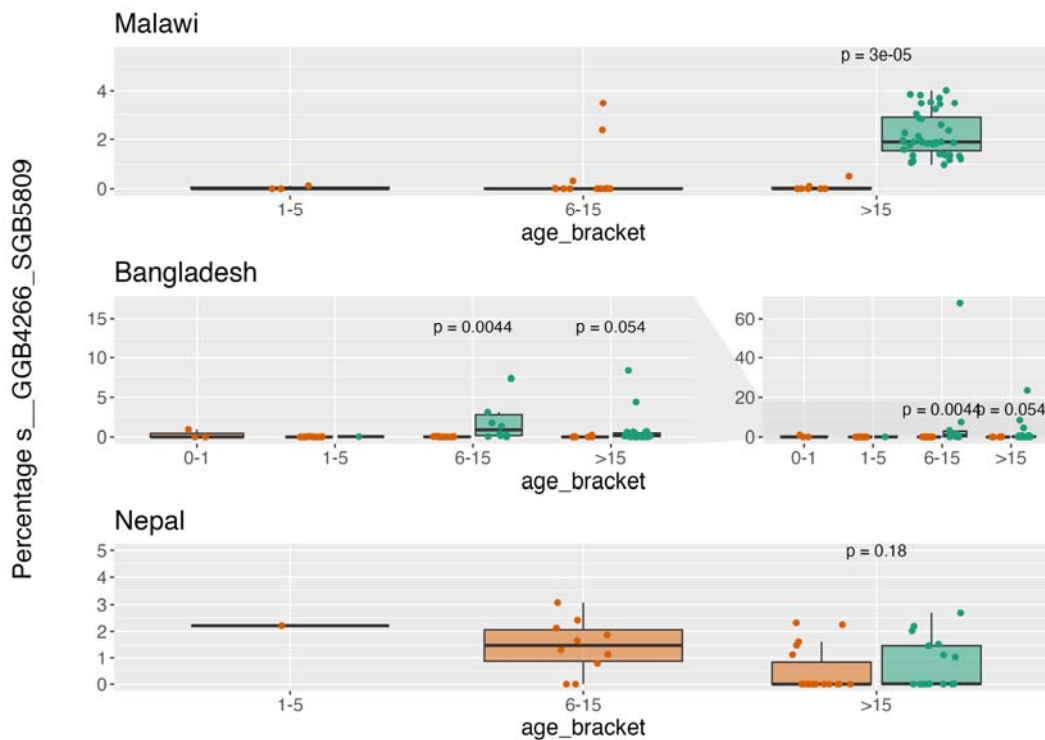
934

935



936  
937

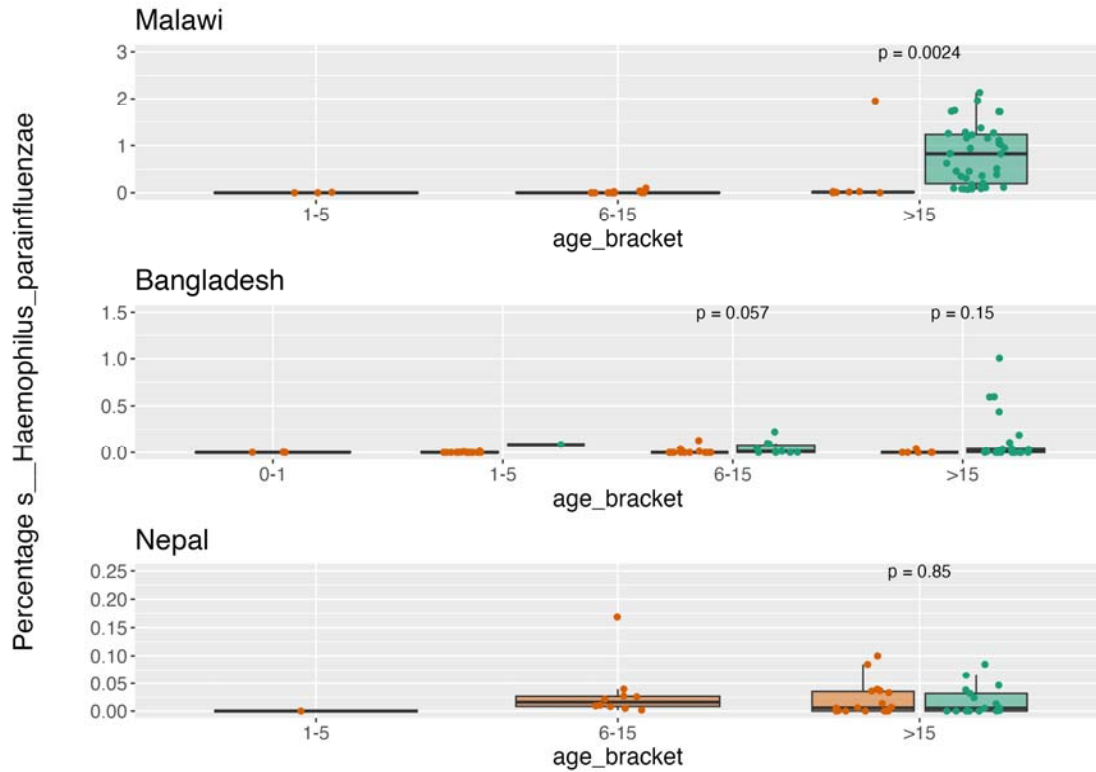
Supplementary Figure 6: Prevalence of Clostridium SGB6179 across age brackets in Malawi, Bangladesh, and Nepal



938  
939

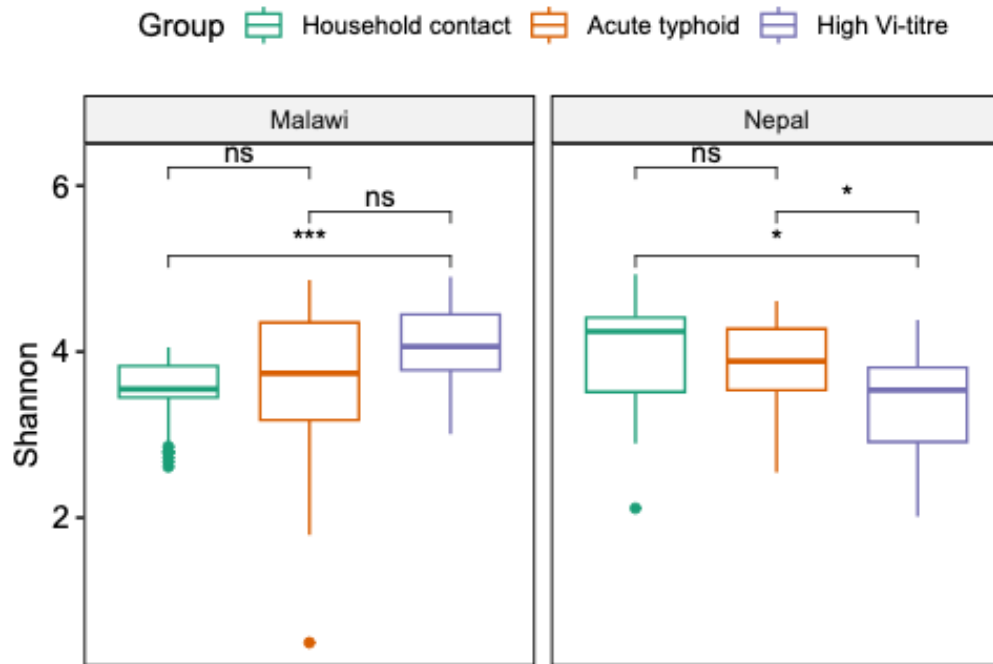
Supplementary Figure 7: Prevalence of GGB4266\_SGB5809 across age brackets in Malawi, Bangladesh, and Nepal





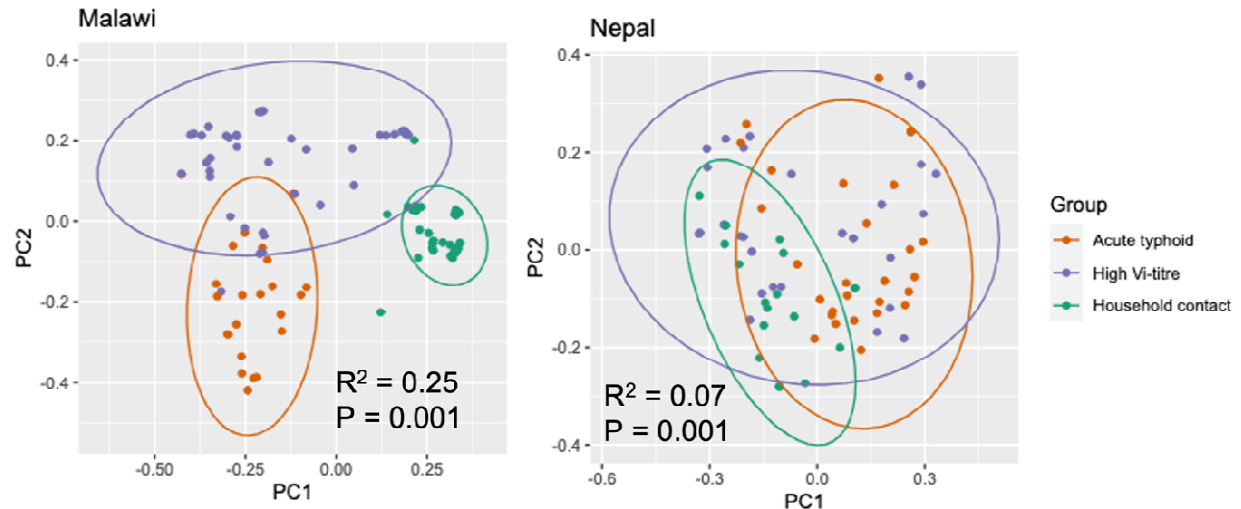
940  
941  
942

Supplementary Figure 8: Prevalence of *Haemophilus parainfluenzae* across age brackets in Malawi, Bangladesh, and Nepal



943  
944  
945  
946

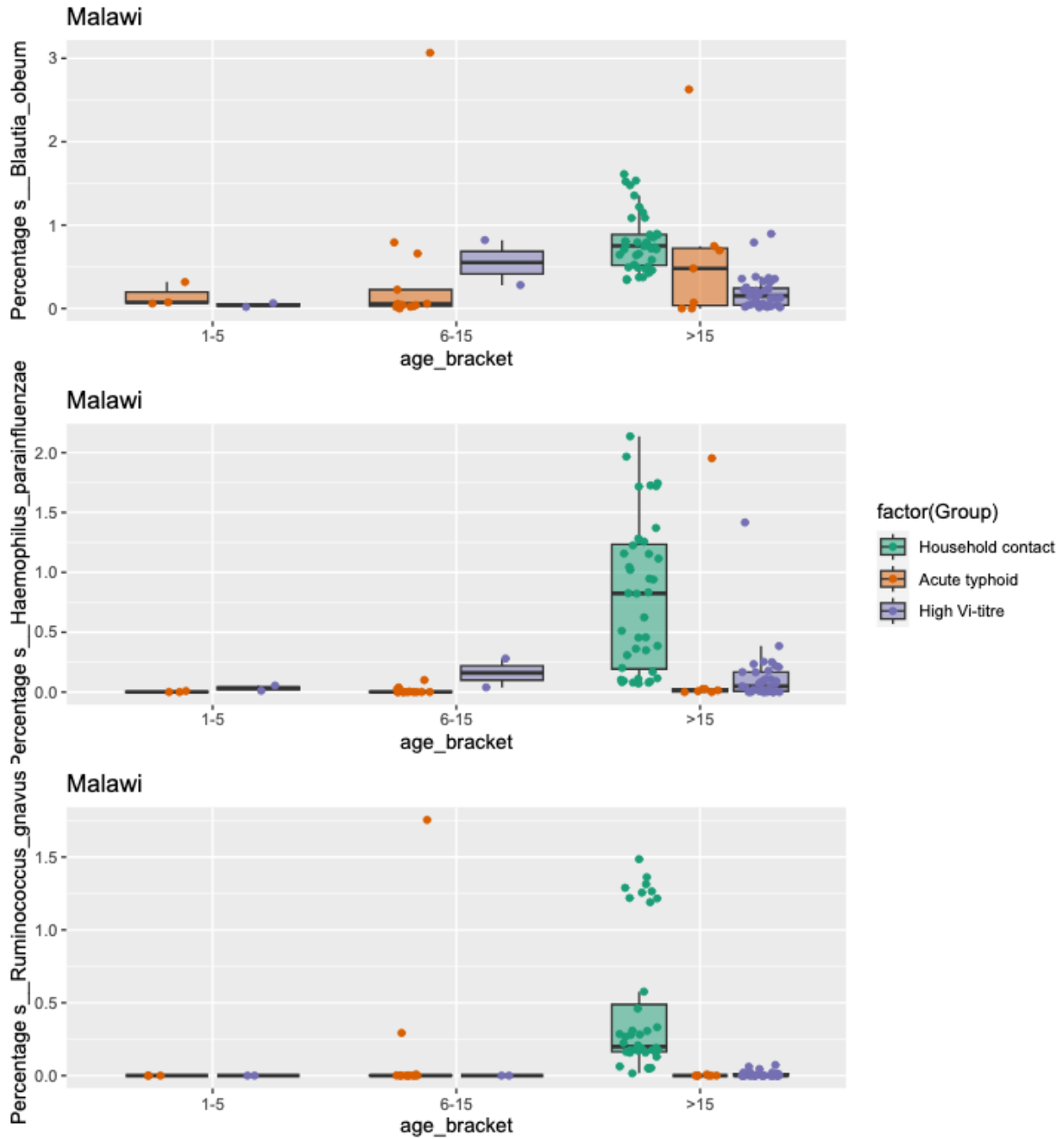
Supplementary Figure 9: Alpha diversity of acute typhoid patients, high Vi-titre participants, and household contacts from Malawi and Nepal. Statistical annotations are the p-values resulting from Wilcoxon rank sum tests. A single asterisk indicates a p-value < 0.01, triple asterisk indicates a p-value < 0.0001.



947

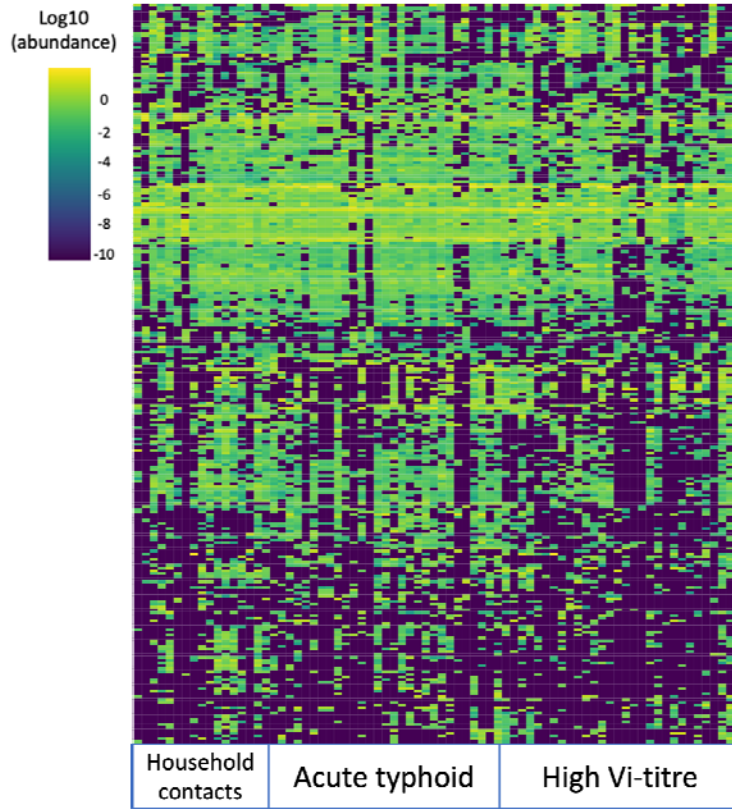
948 *Supplementary Figure 10: Beta diversity of acute typhoid fever, high Vi-titre participants, and household contacts*  
949 *from Malawi and Nepal*

It is made available under a [CC-BY 4.0 International license](https://creativecommons.org/licenses/by/4.0/).



950  
951  
952

Supplementary Figure 11: Prevalence of *B. obeum*, *H. parainfluenzae*, and *R. gnavus* across three participant groups (household contacts, typhoid cases, and high Vi-titre) in Malawi.



953

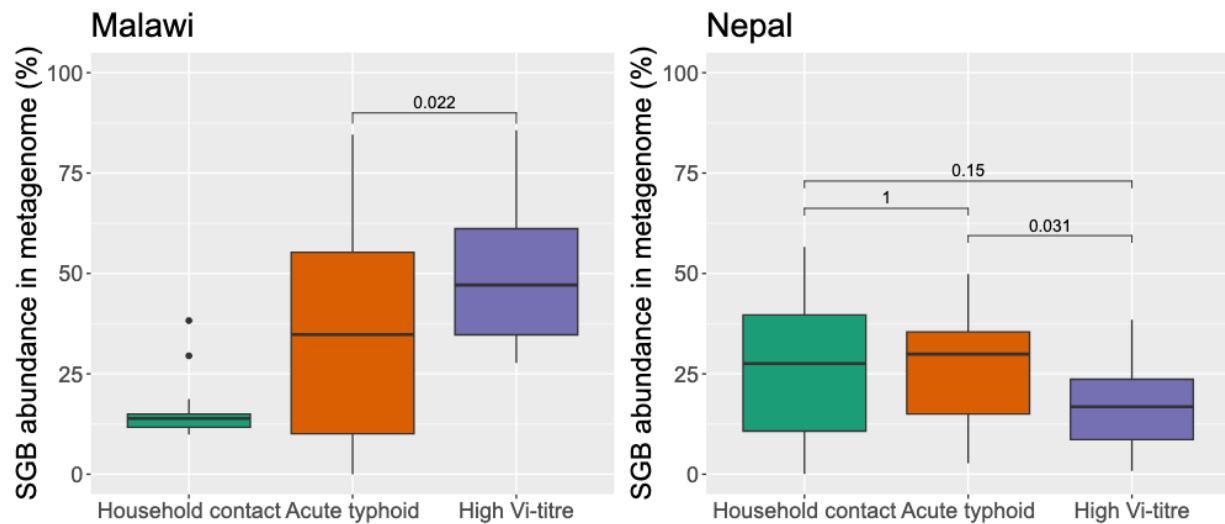
954

955

956

Supplementary Figure 12: Heatmap of top 400 taxa from Nepalese participants – household contacts, acute typhoid cases and high-Vi titre participants.

957



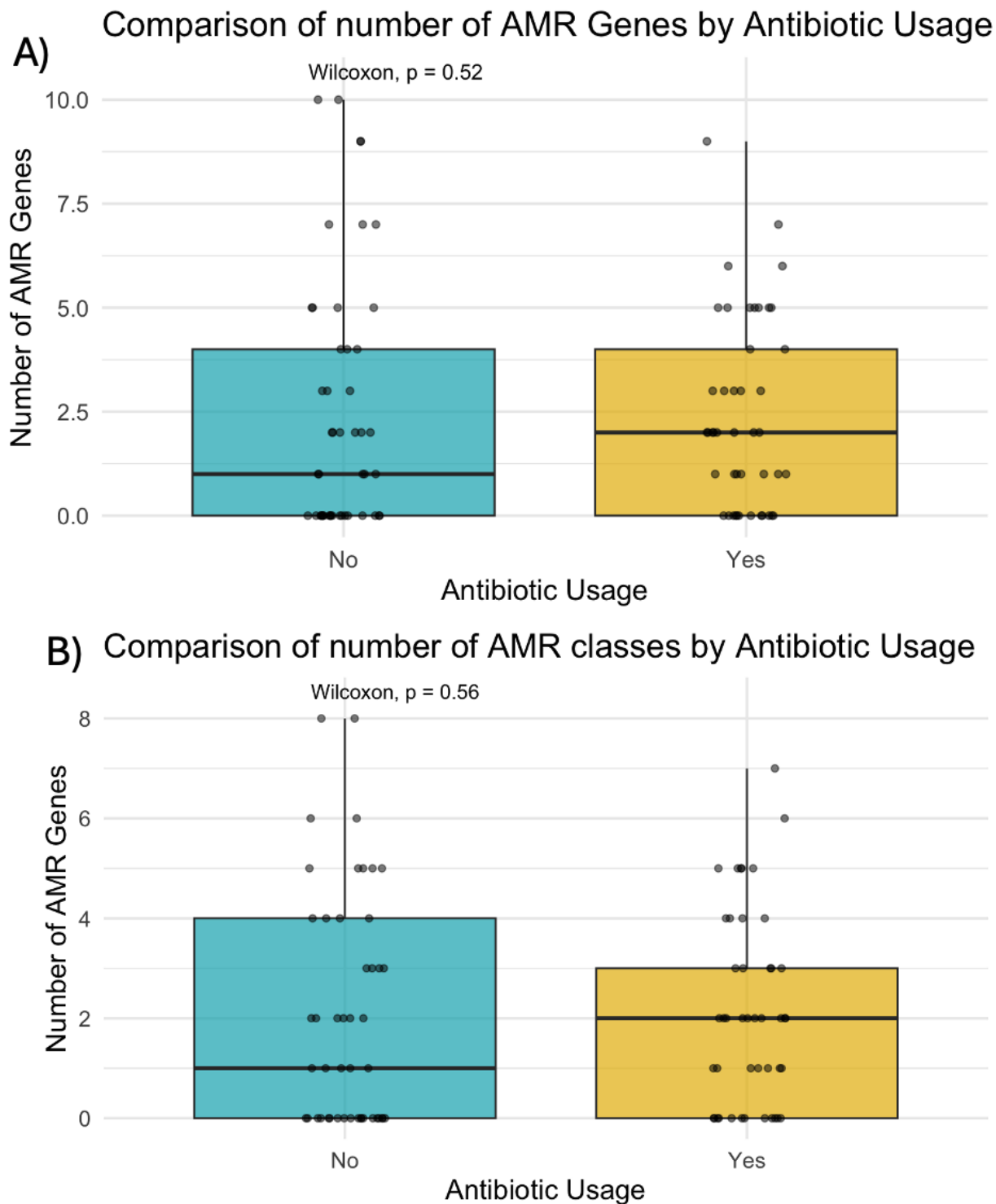
958

959

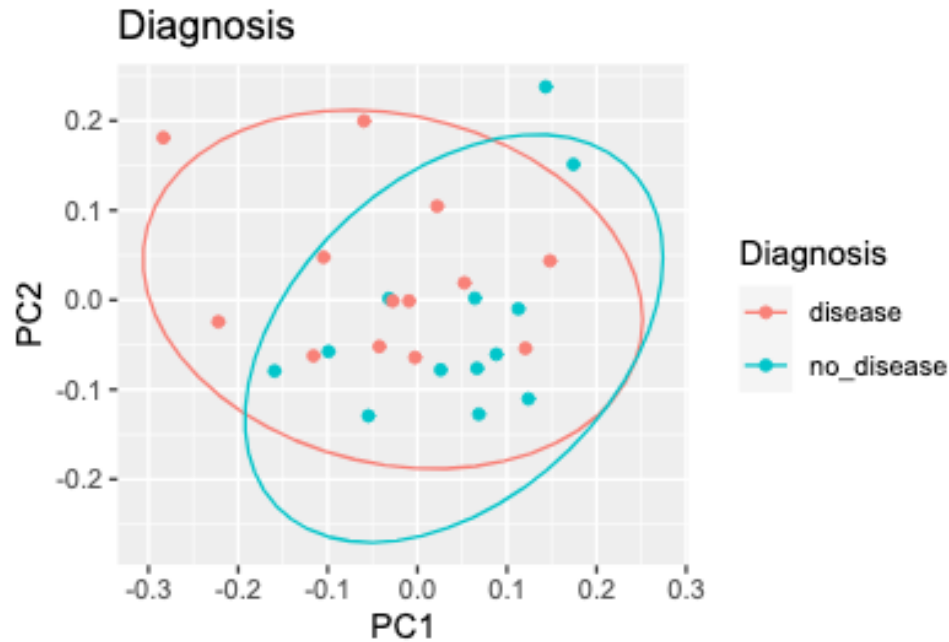
960

Supplementary Figure 13: The abundance of species only described as species genome bins in the metaphlan database from Malawian and Nepalese household contacts, acute typhoid, and high-Vi titre participants.

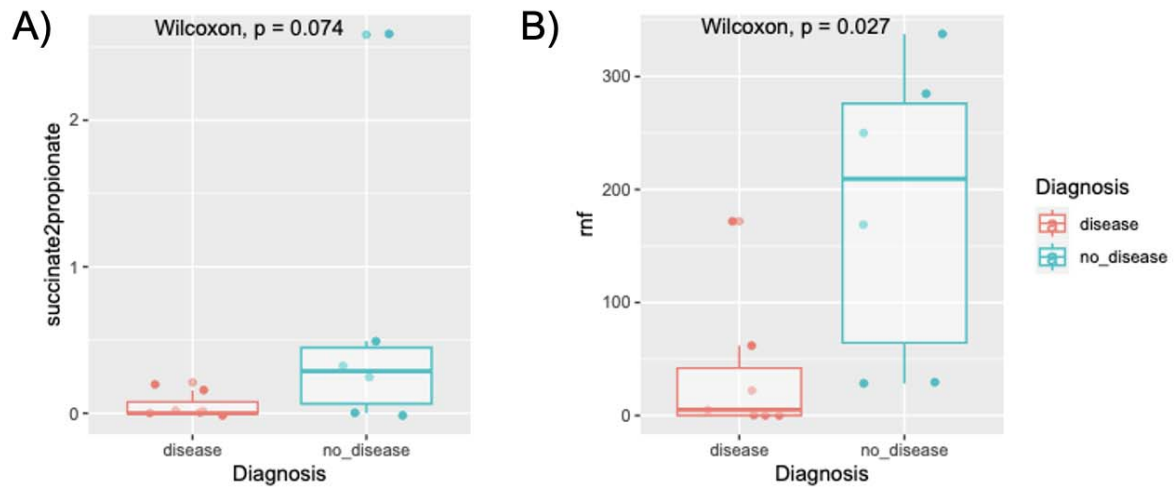
961



962  
963 *Supplementary Figure 14: Comparison of A) the number of AMR gene and B) the number of AMR gene classes*  
964 *identified in participants from all three sites who did and did not report antibiotic usage prior to sampling*



965  
966 *Supplementary Figure 15: Beta-diversity plot of 26 CHIM participants challenged with S. Typhi or S. Paratyphi,*  
967 *coloured by whether they were diagnosed with typhoid/paratyphoid fever following pathogen exposure.*



968  
969 *Supplementary Figure 16: Comparison of prevalence of A) succinate2priopionate and B) rnf MGCs between people*  
970 *who were susceptible (disease) and non-susceptible (no\_disease) to challenge with S. Typhi.*

971  
972  
973

## 974 Supplementary Table captions

- 975 *Supplementary Table 1: ANOVA analysis of alpha diversity from healthy household contacts and typhoid fever*  
976 *patients from all three sites*
- 977 *Supplementary Table 2: PERMANOVA analysis of beta diversity from healthy household contacts and typhoid fever*  
978 *patients from all three sites*
- 979 *Supplementary Table 3: PERMANOVA analysis of beta diversity from healthy household contacts and typhoid fever*  
980 *patients from all Bangladesh*
- 981 *Supplementary Table 4: PERMANOVA analysis of beta diversity from healthy household contacts and typhoid fever*  
982 *patients from Malawi*
- 983 *Supplementary Table 5: PERMANOVA analysis of beta diversity from healthy household contacts and typhoid fever*  
984 *patients from Nepal*
- 985 *Supplementary Table 6: Median proportion of reads assigned to different phyla from healthy household contacts and*  
986 *typhoid fever patients from all three sites*
- 987 *Supplementary Table 7: Species associated with health or disease in Bangladesh only. Positive co-efficient (coef)*  
988 *means the species is associated with health, negative co-efficient means it's associated with typhoid fever.*
- 989 *Supplementary Table 8: Species associated with health or disease in Malawi only. Positive co-efficient (coef) means*  
990 *the species is associated with health, negative co-efficient means it's associated with typhoid fever.*
- 991 *Supplementary Table 9: Full information about Metabolic Gene Clusters associated with health in both Bangladesh*  
992 *and Malawi.*
- 993 *Supplementary Table 10: ANOVA analysis of alpha diversity from healthy household contacts, typhoid fever patients,*  
994 *and high Vi-titre participants from Malawi and Nepal*
- 995 *Supplementary Table 11: PERMANOVA analysis of beta diversity from healthy household contacts, typhoid fever*  
996 *patients, and high Vi-titre participants from Malawi*
- 997 *Supplementary Table 12: PERMANOVA analysis of beta diversity from healthy household contacts, typhoid fever*  
998 *patients, and high Vi-titre participants from Nepal*
- 999 *Supplementary Table 13: Species associated with high-Vi titre compared with household controls in Malawi only.*  
1000 *Positive coefficient (coef) is associated with health, negative co-efficient is associated with high-Vi titre.*
- 1001 *Supplementary Table 14: Metagenome identification of AMR genes commonly identified in Salmonella Typhi per*  
1002 *country*
- 1003 *Supplementary Table 15: Metagenome identification of AMR genes commonly identified in Salmonella Typhi per*  
1004 *participant group*
- 1005 *Supplementary Table 16: The average weighted importance of species to random forest classification of samples as*  
1006 *being from control or presumptive carrier participants.*
- 1007 *Supplementary Table 17: The correlation between the proportion of S. Typhi isolates and the proportion of*  
1008 *microbiome samples from each site with AMR genes to quinolones, sulphonamides and tetracycline.*
- 1009 *Supplementary Table 18: Demographic information on CHIM participants*
- 1010 *Supplementary Table 19: Alpha diversity ANOVA results for CHIM data*
- 1011 *Supplementary Table 20: PERMANOVA analysis of beta-diversity amongst CHIM participants challenged with S.*  
1012 *Typhi and S. Paratyphi*
- 1013 *Supplementary Table 21: Species associated with household controls vs both typhoid fever and high Vi titre from*  
1014 *Malawi.*

- 1015 *Supplementary Table 22: SGBs identified in Malawi*
- 1016 *Supplementary Table 23: Associations between MGCs belonging to classes identified associated with household*  
1017 *controls compared with acute typhoid cases and no disease following challenge in the CHIM*
- 1018 *Supplementary Table 24: MGCs significantly different between household contacts and typhoid cases in Nepal*
- 1019 *Supplementary Table 25: MGCs significantly different between household contacts and typhoid cases in Bangladesh*
- 1020 *Supplementary Table 26: MGCs significantly different between household contacts and typhoid cases in Malawi*
- 1021 *Supplementary Table 27: Endemic country cohort participant information*
- 1022 *Supplementary Table 28: metadata on CHIM samples*
- 1023 *Supplementary Table 29: The prevalence and abundance of species in the CHIM that were associated with typhoid*  
1024 *fever in Malawi and Bangladesh*
- 1025 *Supplementary Table 30: Combined results of maaslin analysis of MGC types in four cohorts (Bangladesh, Malawi,*  
1026 *Nepal, CHIM). Column headings indicate which cohort specific results are from mal is Malawi, bgd is Bangladesh,*  
1027 *nep is Nepal, and patch is the CHIM. If a result is NA, then there was insufficient of the MGC type identified in that*  
1028 *cohort for maaslin analysis.*