

## Contents

1. Supplemental Methods .....	3
1.1. Search Strategy .....	3
1.2. Study Selection .....	21
1.3. Data Extraction .....	22
1.4. Quality Assessment .....	22
1.5. Data Analysis .....	22
1.5.1 Statistical Analysis .....	22
1.5.2 Additional Subgroup Analysis .....	22
2. Supplemental eResults .....	23
2.1 Studies With Insufficient Numbers for Meta-Analysis .....	23
2.2 Risk of Death – Other Subgroup Analyses .....	23
2.3 Risk of ICU – Sensitivity and Subgroup Analyses .....	23
2.4 Risk of Any Combination of Severity Outcomes (Death, Hospitalization or ICU Admission) Among Patients With IC/IS Conditions Compared With Patients Without IC/IS Conditions .....	23
2.5. Supplemental eTables .....	24
2.5.1. Supplemental eTable 1. Inclusion and Exclusion Criteria for Studies Included in This Analysis. ....	24
2.5.2 Supplemental eTable 2. Omicron Period in the Included Studies .....	26
2.5.3. Supplemental eTable 3. Risk of Bias of the Included Studies Using NOS and JBI Tools .....	30
2.5.4. Supplemental eTable 4. Main and Sensitivity Analyses Results of the ‘Death’ Outcome .....	33
2.5.5. Supplemental eTable 5. Main and Population Subgroup Analyses Results of the ‘Death’ Outcome for All Population Subgroups of Interest .....	34
2.5.6. Supplemental eTable 6. Main and Sensitivity Analyses Results of the ‘Hospitalization’ Outcome ..	35
2.5.7. Supplemental eTable 7. Main and Population Subgroup Analyses Results of the ‘Hospitalization’ Outcome for All Subgroups of Interest .....	36
2.5.8. Supplemental eTable 8. Main and Sensitivity Analyses Results of the ‘ICU Admission’ Outcome .	37
2.5.9. Supplemental eTable 9. Main and Population Subgroup Analyses Results of the ‘ICU’ Outcome for All Population Subgroups of Interest .....	38
2.5.10. Supplemental eTable 10. Main and Sensitivity Analyses Results of the ‘Combined’ Outcome .....	39
2.5.11. Supplemental eTable 11. Main and Population Subgroup Analyses Results of the ‘Combined’ Outcome for All Population Subgroups of Interest .....	40
2.6. Meta-analyses for Each IC/IS Condition: Forest Plots of Pooled RR for Each IC/IS Condition and Outcome .....	41
2.6.1. Autoimmune Disease .....	41
2.6.2. Cancer .....	45
2.6.3. HIV .....	49

2.6.4. IC/IS.....	50
2.6.5. Liver Disease .....	54
2.6.6. Renal Disease.....	58
2.6.7. Transplant .....	62
References.....	66

## 1 1. Supplemental eMethods

### 2 1.1. Search Strategy

3 The following databases were used for searches: Embase, MEDLINE, PubMed, Europe PMC (including  
4 medRxiv and bioRxiv preprints), Latin American and Caribbean Health Sciences Literature (LILACS), Cochrane  
5 COVID-19 Study Register, and the World Health Organization (WHO) COVID-19 Database. Search strategies  
6 were structured using search terms related to COVID-19 infection, risk, and burden of illness, in combination  
7 with appropriate study design filters, as detailed below. Rolling searches were performed each month for studies  
8 available between 1 January 2022 and 13 March 2024, though the WHO COVID-19 database was no longer  
9 available before the end date (ceased June 2023). Hand searching was also performed, in which bibliographies  
10 of identified studies were checked, and for particularly relevant studies, citation tracking (Google Scholar) was  
11 performed.

12 Searching was carried out using 2 separate search approaches:

13 Search 1: Burden/risk of COVID-19 infection;

14 Search 2: Protective effect of vaccination on burden/risk of COVID-19 infection.

15 The following resources were searched for this systematic review:  
16  
17

Database	Host	Date range	Date searched	S1: Burden results	S2: Vaccine results
<b>January 2024 searches</b>					
Embase	Ovid	2022-2023/12/29	2.1.24	4172	1628
Medline ALL	Ovid	2022-2024/02/02	3.1.24	3385	825
PubMed	NLM	2022-2024/01/03	3.1.24	1047	281
LILACS	www	2022-2024/01/04	4.1.24	38	3
Cochrane COVID Register	www	2022-2024/01/04	4.1.24	3814	1792
Europe PMC, includes bioRxiv & medRxiv	www	2022-2024/01/04	4.1.24	10	10
WHO COVID-19 database	www	2022-2024/01/03	3.1.24	2268	477
<b>January 2024 subtotal</b>				<b>14734</b>	<b>5016</b>
<b>February 2024 update searches</b>					
Embase	Ovid	2022-2024/02/01	1.2.24	460	110
Medline ALL	Ovid	2022-2024/02/01	1.2.24	363	51
PubMed	NLM	2022-2024/02/01	1.2.24	92	20
LILACS	www	2022-2024/02/01	2.2.24	3	0
Cochrane COVID Register	www	2022-2024/02/01	2.2.24	0	1

Europe PMC, includes bioRxiv & medRxiv	www	2022-2024/02/01	1.2.24	0	1
WHO COVID-19 database*	www	Not updated	-	-	-
<b>February 2024 subtotal</b>				<b>918</b>	<b>183</b>
<b>March 2024 update searches</b>					
Embase	Ovid	2022-2024/03/01	1.3.24	404	86
68	Ovid	2022-2024/03/01	1.3.24	386	63
PubMed	NLM	2022-2024/03/01	12.3.24	68	17
LILACS	www	2022-2024/03/01	13.3.24	0	0
Cochrane COVID Register	www	2022-2024/03/01	13.3.24	59	0
Europe PMC, includes bioRxiv & medRxiv	www	2022-2024/03/01	1.3.24	3	0
WHO COVID-19 database*	www	Not updated	-	-	-
<b>March 2024 update subtotal</b>				<b>920</b>	<b>166</b>
<b>Sub total retrieved</b>				<b>16572</b>	<b>5365</b>
<b>Sub total screened</b>				<b>9425</b>	<b>2167</b>
<b>Sub total duplicates</b>				<b>7147</b>	<b>3198</b>
<b>Combined total retrieved</b>				<b>21937</b>	
<b>Combined total screened</b>				<b>11592</b>	
<b>Combined total duplicates</b>				<b>10345</b>	

\* WHO COVID-19 database ceased on June 2023, therefore update searches were not necessary.

18  
19  
20

21 **Search 1: Burden/risk of COVID-19 infection search strategies**

22  
23 **Embase (Ovid): 2022-2023/12/29**

24 **Searched 2.1.24**

25  
26 1 exp coronavirus disease 2019/ 374674  
27 2 sars-related coronavirus/ or exp Severe acute respiratory syndrome coronavirus 2/ 106902  
28 3 (coronavirinae/ or betacoronavirus/ or coronavirus infection/) and (epidemic/ or pandemic/  
29 10615  
30 4 (Coronavirus\$ or "covid 19" or 2019-ncov).ti,ab,kw,kf,ot. 430070  
31 5 (2019-ncov or 2019ncov or corona-virus\$ or cov19 or cov-19 or 19nCoV or COVID19 or COVID2019  
32 or "COVID-19 2019").ti,ab,kw,kf,ot. 15833  
33 6 (ncov\$ or "sars cov\$" or sarscov\$ or "sars coronavirus\$" or coronavirus\$ or corono\$ virus\$ or "19-  
34 nCoV\$" or 19nCoV\$).ti,ab,kw,kf,ot. 160670  
35 7 (SARS2\$ or "SARS-2\$" or SARScoronavirus\$ or SARS-coronavirus\$ or SARScoronavirus\$ or  
36 SARS-coronavirus\$).ti,ab,kw,kf,ot. 2922  
37 8 ("HCoV-19\$" or HCoV19\$ or "HCoV-2019\$" or HCoV2019\$).ti,ab,kw,kf,ot. 70  
38 9 ("2019 novel\$" or Ncov\$).ti,ab,kw,kf,ot. 5843  
39 10 ("Severe Acute Respiratory Syndrome Coronavirus 2" or "Severe Acute Respiratory Syndrome Corona  
40 Virus 2").ti,ab,kw,kf,ot. 36797  
41 11 or/1-10 496535  
42 12 ("2022" or "2023" or "2024").ti,ab,ot. 235450  
43 13 11 and 12 26927  
44 14 (strain or strains or variant\$ or mutation\$).ti,ab,ot,kf,kw. 2383716  
45 15 11 and 14 36992  
46 16 exp "SARS-CoV-2 (lineage B.1.1)"/ 8191  
47 17 exp "SARS-CoV-2 Omicron"/ 7250  
48 18 (omikron or Omicron or "B.1.1.529" or "B11529" or xbb\$).af. 13566  
49 19 or/16-18 14551  
50 20 or/13,15,19 63058  
51 21 Clinical study/ 165138  
52 22 Case control study/ 211296  
53 23 Family study/ 25764  
54 24 Longitudinal study/ 203445  
55 25 Retrospective study/ 1544157  
56 26 Prospective study/ 899644  
57 27 Randomized controlled trials/ 267337  
58 28 26 not 27 888668  
59 29 Cohort analysis/ 1096585  
60 30 (Cohort adj (study or studies)).mp. 493516  
61 31 (Case control adj (study or studies)).tw. 171865  
62 32 (follow up adj (study or studies)).tw. 74874  
63 33 (observational adj (study or studies)).tw. 264634  
64 34 (epidemiologic\$ adj (study or studies)).tw. 123898  
65 35 (cross sectional adj (study or studies)).tw. 356386  
66 36 or/21-25,28-35 4072059  
67 37 animal/ or animal experiment/ 4720382  
68 38 (rat or rats or mouse or mice or murine or rodent or rodents or hamster or hamsters or pig or pigs or  
69 porcine or rabbit or rabbits or animal or animals or dogs or dog or cats or cow or bovine or sheep or ovine or  
70 monkey or monkeys).ti,ab,ot,hw. 7724982  
71 39 or/37-38 7724982  
72 40 human experiment/ or exp humans/ 25973725  
73 41 39 not (39 and 40) 5781960  
74 42 36 not 41 4009600  
75 43 limit 42 to yr="2022 -Current" 754329  
76 44 43 not (letter or editorial or conference or "conference abstract" or "conference paper" or "conference  
77 review").pt. 555478  
78 45 mortality/ or death/ or "cause of death"/ or survival rate/ 1478645

79 46 (mortalit\$ or death\$ or fatal\$ or survival).ti,ab,ot,kf,kw. 4124730  
 80 47 exp intensive care/ or exp intensive care unit/ or high dependency unit/ 1066416  
 81 48 (close attention unit\$ or intensive care or respiratory care unit or respiratory care units or special care  
 82 unit or special care units or high dependency unit or high dependency units).ti,ab,ot,kf,kw. 298895  
 83 49 (ICU or ICUs or CCU or CCUs or GICU or GICUs or HDU or HDUs or ITU or ITUs).ti,ab,ot,kf,kw.  
 84 187026  
 85 50 (Hospitaliz\$ or Hospitalis\$ or (hospital adj2 Admission\$) or Critical Care).ti,ab,ot,kf,kw. 716741  
 86 51 hospitalization/ 546684  
 87 52 ("length of stay" or "duration of stay" or "extended stay" or "prolonged stay" or "hospital  
 88 stay").ti,ab,ot,hw. 412206  
 89 53 ("in-patient stay" or "inpatient stay" or "in-patient stays" or "inpatient stays").ti,ab,ot,hw. 7835  
 90 54 or/45-53 5826795  
 91 55 exp risk/ or exp risk factor/ or exp risk assessment/ 3170934  
 92 56 hazard ratio/ or odds ratio/ 99395  
 93 57 mortality risk/ 46876  
 94 58 life table/ 5253  
 95 59 (risk\$ or danger\$ or association\$ or peril or jeopard\$ or threat\$ or chance or chances or hazard\$ or  
 96 gamble\$ or probabilit\$ or "at stake" or endanger\$ or associat\$ or likelihood\$ or possibilit\$ or correlation\$ or  
 97 odds).ti,ab,ot,kf,kw. 12507127  
 98 60 (morbidity\$ or comorbid\$ or co-morbid\$).ti,ab,ot,kf,kw. 1138678  
 99 61 (incidence or prevalence or predict\$ or prognosis).ti,ab,ot,kf,kw. 5507851  
 100 62 (HR or RR or aiRR or aOR or "adjusted OR").ti,ab,ot,kf,kw. 753007  
 101 63 or/55-62 15711755  
 102 **64 20 and 54 and 63 and 44 4172**

103  
 104 *The Embase strategy was updated on 1.2.24 (460 records) and 1.3.24 (404 records).*

105  
 106 *COVID facet based on terms from:*

107  
 108 World Health Organization (26 May 2021) WHO COVID-19 Database Search Strategy. Systematic search of  
 109 the COVID-19 literature performed Monday through Friday for the WHO Database. Search strategy as of 26  
 110 May 2021. Searches performed by Tomas Allen, Kavita Kothari, and Martha Knuth. Available from:  
 111 [https://www.who.int/docs/default-source/coronaviruse/who-covid-19-database/who-covid-  
 112 19\\_sources\\_searchstrategy\\_20210526.pdf?sfvrsn=65209cc2\\_5](https://www.who.int/docs/default-source/coronaviruse/who-covid-19-database/who-covid-19_sources_searchstrategy_20210526.pdf?sfvrsn=65209cc2_5)

113  
 114 Canadian Agency for Drugs and Technologies in Health (2.9.21) CADTH COVID-19 Search Strings: COVID-  
 115 19 — EMBASE (Internet). Available from: [https://covid.cadth.ca/literature-searching-tools/cadth-covid-19-  
 116 search-strings/](https://covid.cadth.ca/literature-searching-tools/cadth-covid-19-search-strings/)

117  
 118 NICE (18 December 2020) [accessed 17.8.21] COVID-19 rapid guideline: managing the long-term effects of  
 119 COVID-19 [NG188]. Search history record [PDF]. NICE: London. Available from:  
 120 <https://www.nice.org.uk/guidance/ng188/evidence/search-strategies-pdf-8957634445>

121  
 122 *Observational study design filter adapted from:*

123  
 124 Scottish Intercollegiate Guidelines Network (SIGN). Search filters: observational studies. Embase. Edinburgh:  
 125 SIGN, Last Modified 24/04/17 Available from: <https://www.sign.ac.uk/what-we-do/methodology/search-filters>

126  
 127 Observational Studies - Embase. In: CADTH Search Filters Database. Ottawa: CADTH; 2023 [accessed  
 128 7.11.23]: <https://searchfilters.cadth.ca/link/37>

129  
 130 **Medline ALL (Ovid): 2022-2024/01/02**  
 131 **Searched 3.1.24**

132  
 133 1 exp COVID-19/ 250794  
 134 2 exp Severe acute respiratory syndrome-related coronavirus/ 166686  
 135 3 coronaviridae/ or exp coronavirus/ 178833  
 136 4 Betacoronavirus/ 33277

137	5	Coronavirus Infections/	46094
138	6	or/3-5	185838
139	7	epidemics/ or pandemics/	139078
140	8	Disease Outbreaks/	92374
141	9	or/7-8	226884
142	10	6 and 9	83151
143	11	(Coronavirus\$ or "covid 19" or 2019-ncov).ti,ab,kw,kf,ot.	385791
144	12	(2019-ncov or 2019ncov or corona-virus\$ or cov19 or cov-19 or 19nCoV or COVID19 or COVID2019	
145		or "COVID-19 2019").ti,ab,kw,kf,ot.	10202
146	13	(ncov\$ or "sars cov\$" or sarscov\$ or "sars coronavirus\$" or coronavirus\$ or coronov\$ virus\$ or "19-	
147		nCoV\$" or 19nCoV\$).ti,ab,kw,kf,ot.	140222
148	14	(SARS2\$ or "SARS-2\$" or SARScoronavirus\$ or SARS-coronavirus\$ or SARScoronavirus\$ or	
149		SARS-coronavirus\$).ti,ab,kw,kf,ot.	2635
150	15	("HCoV-19\$" or HCoV19\$ or "HCoV-2019\$" or HCoV2019\$).ti,ab,kw,kf,ot.	66
151	16	("2019 novel\$" or Ncov\$).ti,ab,kw,kf,ot.	5236
152	17	("Severe Acute Respiratory Syndrome Coronavirus 2" or "Severe Acute Respiratory Syndrome Corona	
153		Virus 2").ti,ab,kw,kf,ot.	36907
154	18	or/1-2,10-17	416995
155	19	("2022" or "2023" or "2024").ti,ab,ot.	153808
156	20	18 and 19	17876
157	21	(strain or strains or variant\$ or mutation\$).ti,ab,ot,kf,kw.	1916135
158	22	18 and 21	32095
159	23	(omikron or Omicron or "B.1.1.529" or "B11529" or xbb\$).af.	9846
160	24	or/20,22-23	48695
161	25	mortality/ or "cause of death"/ or fatal outcome/ or hospital mortality/ or survival rate/	388730
162	26	Death/	20522
163	27	(mortalit\$ or death\$ or fatal\$ or survival).ti,ab,ot,kf,kw.	2881687
164	28	exp Critical Care/	67547
165	29	exp Intensive Care Units/	107853
166	30	(close attention unit\$ or intensive care or respiratory care unit or respiratory care units or special care	
167		unit or special care units or high dependency unit or high dependency units).ti,ab,ot,kf,kw.	202827
168	31	(ICU or ICUs or CCU or CCUs or GICU or GICUs or HDU or HDUs or ITU or ITUs).ti,ab,ot,kf,kw.	
169			95415
170	32	(Hospitaliz\$ or Hospitalis\$ or (hospital adj2 Admission\$) or Critical Care).ti,ab,ot,kf,kw.	436800
171	33	Hospitalization/	137866
172	34	("length of stay" or "duration of stay" or "extended stay" or "prolonged stay" or "hospital	
173		stay").ti,ab,ot,hw.	220112
174	35	"Length of Stay"/	103573
175	36	("in-patient stay" or "inpatient stay" or "in-patient stays" or "inpatient stays").ti,ab,ot,hw.	3851
176	37	or/25-36	3560422
177	38	exp risk/	1397708
178	39	odds ratio/ or proportional hazards models/	185114
179	40	life tables/	6619
180	41	(risk\$ or danger\$ or association\$ or peril or jeopard\$ or threat\$ or chance or chances or hazard\$ or	
181		gamble\$ or probabilit\$ or "at stake" or endanger\$ or associat\$ or likelihood\$ or possibilit\$ or correlation\$ or	
182		odds).ti,ab,ot,kf,kw.	9312430
183	42	(morbidity\$ or comorbid\$ or co-morbid\$).ti,ab,ot,kf,kw.	716968
184	43	(incidence or prevalence or predict\$ or prognosis).ti,ab,ot,kf,kw.	3993128
185	44	(HR or RR or aiRR or aOR or "adjusted OR").ti,ab,ot,kf,kw.	471257
186	45	or/38-44	11628532
187	46	Epidemiologic studies/	9457
188	47	exp case control studies/	1470108
189	48	exp cohort studies/	2556574
190	49	Case control.tw.	158730
191	50	Longitudinal.tw.	335439
192	51	Retrospective.tw.	782068
193	52	Cross sectional.tw.	540774
194	53	Cross-sectional studies/	487981

195 54 Observational Studies as Topic/ 9294  
 196 55 (observational adj3 (study or studies or design or analysis or analyses)).ti,ab,kf. 234202  
 197 56 ((follow up or followup) adj7 (study or studies or design or analysis or analyses)).ti,ab,kf. 175238  
 198 57 (epidemiologic\$ adj3 (study or studies or design or analysis or analyses)).ti,ab,kf. 119921  
 199 58 ((longterm or (long adj term)) adj7 (study or studies or design or analysis or analyses or data)).ti,ab,kf.  
 200 160631  
 201 59 (cohort\$ adj3 (study or studies or design or analysis or analyses or data)).ti,ab,kf. 420054  
 202 60 (prospective adj7 (study or studies or design or analysis or analyses)).ti,ab,kf. 551875  
 203 61 or/46-60 4243864  
 204 62 animals/ not (animals/ and humans/) 5148855  
 205 63 61 not 62 4139882  
 206 64 63 not (case reports or clinical conference or comment or editorial or letter).pt. 3929840  
 207 65 limit 64 to yr="2022 -Current" 538850  
 208 **66 24 and 37 and 45 and 65 3385**

209  
 210 *The Medline ALL strategy was updated on 1.2.24 (363 records) and 1.3.24 (363 records).*

211  
 212 *COVID facet based on terms from:*

213  
 214 World Health Organization (26 May 2021) WHO COVID-19 Database Search Strategy. Systematic search of  
 215 the COVID-19 literature performed Monday through Friday for the WHO Database. Search strategy as of 26  
 216 May 2021. Searches performed by Tomas Allen, Kavita Kothari, and Martha Knuth. Available from:  
 217 [https://www.who.int/docs/default-source/coronaviruse/who-covid-19-database/who-covid-19\\_sources\\_searchstrategy\\_20210526.pdf?sfvrsn=65209cc2\\_5](https://www.who.int/docs/default-source/coronaviruse/who-covid-19-database/who-covid-19_sources_searchstrategy_20210526.pdf?sfvrsn=65209cc2_5)  
 218

219  
 220 Canadian Agency for Drugs and Technologies in Health (2.9.21) CADTH COVID-19 Search Strings: COVID-  
 221 19 — EMBASE (Internet). Available from: <https://covid.cadth.ca/literature-searching-tools/cadth-covid-19-search-strings/>  
 222

223  
 224 NICE (18 December 2020) [accessed 17.8.21] COVID-19 rapid guideline: managing the long-term effects of  
 225 COVID-19 [NG188]. Search history record [PDF]. NICE: London. Available from:  
 226 <https://www.nice.org.uk/guidance/ng188/evidence/search-strategies-pdf-8957634445>  
 227

228 *Observational study design filter adapted from:*

229  
 230 Scottish Intercollegiate Guidelines Network (SIGN). Search filters: observational studies. Medline. Edinburgh:  
 231 SIGN, Last Modified 24/04/17 Available from: <https://www.sign.ac.uk/what-we-do/methodology/search-filters/>  
 232

233 Observational Studies - Medline. In: CADTH Search Filters Database. Ottawa: CADTH; 2023 [accessed  
 234 7.11.23]:  
 235 [https://searchfilters.cadth.ca/list?q=topic%3A%22Observational%20studies%22&p=1&ps=&sort=title\\_sort%20asc](https://searchfilters.cadth.ca/list?q=topic%3A%22Observational%20studies%22&p=1&ps=&sort=title_sort%20asc)  
 236  
 237

238 **PubMed (NLM): 2022-2024/01/03**

239 **Searched 3.1.24**

240 <https://pubmed.ncbi.nlm.nih.gov/>

241  
 242 **35 #13 AND #30 AND #34 AND #24 AND #25 1,047**  
 243 34 #31 OR #32 OR #33 9,159,936  
 244 33 morbidity[Title/Abstract] OR comorbidity[Title/Abstract] OR "co-morbidity"[Title/Abstract] OR  
 245 morbidities[Title/Abstract] OR comorbidities[Title/Abstract] OR "co-morbidities"[Title/Abstract] OR  
 246 incidence[Title/Abstract] OR prevalence[Title/Abstract] OR predict[Title/Abstract] OR  
 247 predicted[Title/Abstract] OR predictive[Title/Abstract] OR prognosis[Title/Abstract] OR  
 248 prediction[Title/Abstract] OR predictions[Title/Abstract] OR HR[Title/Abstract] OR RR[Title/Abstract] OR  
 249 aiRR[Title/Abstract] OR aOR[Title/Abstract] OR "adjusted OR"[Title/Abstract] 4,362,222  
 250 32 risk[Title/Abstract] OR risks[Title/Abstract] OR risky[Title/Abstract] OR danger[Title/Abstract] OR  
 251 dangers[Title/Abstract] OR dangerous[Title/Abstract] OR association[Title/Abstract] OR  
 252 associations[Title/Abstract] OR peril[Title/Abstract] OR jeopardy[Title/Abstract] OR jeopardise[Title/Abstract]



253 OR jeopardize[Title/Abstract] OR threat[Title/Abstract] OR threats[Title/Abstract] OR chance[Title/Abstract]  
 254 OR chances[Title/Abstract] OR hazard[Title/Abstract] OR hazards[Title/Abstract] OR hazardous[Title/Abstract]  
 255 OR gamble[Title/Abstract] OR gambles[Title/Abstract] OR gambling[Title/Abstract] OR  
 256 probability[Title/Abstract] OR probabilities[Title/Abstract] OR "at stake"[Title/Abstract] OR  
 257 endanger[Title/Abstract] OR endangers[Title/Abstract] OR endangered[Title/Abstract] OR  
 258 endangering[Title/Abstract] OR associate[Title/Abstract] OR associates[Title/Abstract] OR  
 259 associating[Title/Abstract] OR association[Title/Abstract] OR likelihood[Title/Abstract] OR  
 260 likelihoods[Title/Abstract] OR possibility[Title/Abstract] OR possibilities[Title/Abstract] OR  
 261 correlation[Title/Abstract] OR correlations[Title/Abstract] OR odds[Title/Abstract] 6,440,552  
 262 31 (((("Risk"[Mesh]) OR "Odds Ratio"[Mesh:NoExp]) OR "Proportional Hazards Models"[Mesh:NoExp])  
 263 OR "Life Tables"[Mesh:NoExp] 1,481,626  
 264 30 #26 OR #27 OR #28 OR #29 3,581,605  
 265 29 Hospitalized[Title/Abstract] OR Hospitalised population[Title/Abstract] OR  
 266 Hospitalization[Title/Abstract] OR Hospitalisation[Title/Abstract] OR Hospitalizations[Title/Abstract] OR  
 267 Hospitalisations[Title/Abstract] OR "hospital Admission"[Title/Abstract] OR "hospital  
 268 Admissions"[Title/Abstract] OR "Critical Care"[Title/Abstract] OR "length of stay"[Title/Abstract] OR  
 269 "duration of stay"[Title/Abstract] OR "extended stay"[Title/Abstract] OR "prolonged stay"[Title/Abstract] OR  
 270 "hospital stay"[Title/Abstract] OR "in-patient stay"[Title/Abstract] OR "inpatient stay"[Title/Abstract] OR "in-  
 271 patient stays"[Title/Abstract] OR "inpatient stays"[Title/Abstract] 565,867  
 272 28 mortality[Title/Abstract] OR death[Title/Abstract] OR deaths[Title/Abstract] OR fatal[Title/Abstract]  
 273 OR fatality[Title/Abstract] OR fatalities[Title/Abstract] OR survival[Title/Abstract] OR "close attention  
 274 unit"[Title/Abstract] OR "close attention units"[Title/Abstract] OR "intensive care"[Title/Abstract] OR  
 275 "respiratory care unit"[Title/Abstract] OR "respiratory care units"[Title/Abstract] OR "special care  
 276 unit"[Title/Abstract] OR "special care units"[Title/Abstract] OR "high dependency unit"[Title/Abstract] OR  
 277 "high dependency units"[Title/Abstract] OR ICU[Title/Abstract] OR ICUs[Title/Abstract] OR  
 278 CCU[Title/Abstract] OR CCUs[Title/Abstract] OR GICU[Title/Abstract] OR GICUs[Title/Abstract] OR  
 279 HDU[Title/Abstract] OR HDUs[Title/Abstract] OR ITU[Title/Abstract] OR ITUs[Title/Abstract] 3,013,975  
 280 27 (((("Length of Stay"[Mesh:NoExp]) OR "Critical Care"[Mesh]) OR "Intensive Care Units"[Mesh]) OR  
 281 "Hospitalization"[Mesh] 429,629  
 282 26 (((("Mortality"[Mesh:NoExp]) OR "Cause of Death"[Mesh:NoExp]) OR "Fatal  
 283 Outcome"[Mesh:NoExp]) OR "Hospital Mortality"[Mesh:NoExp]) OR "Survival Rate"[Mesh:NoExp]) OR  
 284 "Death"[Mesh:NoExp] 408,041  
 285 25 pubstatusaheadofprint OR publisher[sb] OR pubmednotmedline[sb] 5,627,356  
 286 24 #22 AND #23 493,476  
 287 23 ("2022/01/01"[Date - Publication] : "3000"[Date - Publication]) 3,253,097  
 288 22 #20 NOT #21 3,739,291  
 289 21 LETTER[Publication Type] OR EDITORIAL[Publication Type] OR COMMENT[Publication Type]  
 290 2,213,615  
 291 20 #16 NOT #19 3,825,199  
 292 19 #18 NOT (#18 AND #17) 3,757,858  
 293 18 rat[tiab] or rats[tiab] or mouse[tiab] or mice[tiab] or murine[tiab] or rodent[tiab] or rodents[tiab] or  
 294 hamster[tiab] or hamsters[tiab] or pig[tiab] or pigs[tiab] or porcine[tiab] or rabbit[tiab] or rabbits[tiab] or  
 295 animal[tiab] or animals[tiab] or dogs[tiab] or dog[tiab] or cats[tiab] or cow[tiab] or bovine[tiab] or sheep[tiab]  
 296 or ovine[tiab] or monkey[tiab] or monkeys[tiab] 4,715,684  
 297 17 Human\*[tiab] 3,295,660  
 298 16 #14 OR #15 3,914,514  
 299 15 (((("Epidemiologic Studies"[Mesh:NoExp]) OR "Case-Control Studies"[Mesh]) OR "Cohort  
 300 Studies"[Mesh]) OR "Cross-Sectional Studies"[Mesh:NoExp] 3,195,884  
 301 14 "Case control"[Title/Abstract] OR "cohort study"[Title/Abstract] OR "cohort studies"[Title/Abstract]  
 302 OR "cohort analysis"[Title/Abstract] OR "cohort analyses"[Title/Abstract] OR "follow up study"[Title/Abstract]  
 303 OR "follow up studies"[Title/Abstract] OR "observational study"[Title/Abstract] OR "observational  
 304 studies"[Title/Abstract] OR Longitudinal[Title/Abstract] OR Retrospective[Title/Abstract] OR "Cross  
 305 sectional"[Title/Abstract] 2,068,573  
 306 13 #9 OR #11 OR #12 47,832  
 307 12 omikron[Title/Abstract] OR Omicron[Title/Abstract] OR "B.1.1.529"[Title/Abstract] OR  
 308 "B11529"[Title/Abstract] OR xbb[Title/Abstract] 9,468  
 309 11 #7 AND #10 31,553

310 10 strain[Title/Abstract] OR strains[Title/Abstract] OR variant[Title/Abstract] OR variants[Title/Abstract]  
 311 OR mutation[Title/Abstract] OR mutations[Title/Abstract] 1,893,774  
 312 9 #7 AND #8 17,832  
 313 8 "2022"[Title/Abstract] OR "2023"[Title/Abstract] 158,464  
 314 7 #1 OR #4 OR #5 OR #6 412,676  
 315 6 "COVID-19 2019"[Title/Abstract] OR ncov[Title/Abstract] OR "sars cov"[Title/Abstract] OR  
 316 sarscov[Title/Abstract] OR "sars coronavirus"[Title/Abstract] OR coronavirus[Title/Abstract] OR "corono  
 317 virus"[Title/Abstract] OR "19-nCoV"[Title/Abstract] OR "19nCoV"[Title/Abstract] OR  
 318 "SARS2"[Title/Abstract] OR "SARS-2"[Title/Abstract] OR SARScoronavirus[Title/Abstract] OR "SARS-  
 319 coronavirus"[Title/Abstract] OR SARScoronavirus[Title/Abstract] OR "SARS-coronavirus"[Title/Abstract] OR  
 320 "HCoV-19"[Title/Abstract] OR "HCoV19"[Title/Abstract] OR "HCoV-2019"[Title/Abstract] OR  
 321 "HCoV2019"[Title/Abstract] OR "2019 novel"[Title/Abstract] OR "Severe Acute Respiratory Syndrome  
 322 Coronavirus 2"[Title/Abstract] OR "Severe Acute Respiratory Syndrome Corona Virus 2"[Title/Abstract]  
 323 141,123  
 324 5 "Coronavirus"[Title/Abstract] OR "covid 19"[Title/Abstract] OR "2019-ncov"[Title/Abstract] OR  
 325 "2019-ncov"[Title/Abstract] OR "2019ncov"[Title/Abstract] OR "corona-virus"[Title/Abstract] OR  
 326 "cov19"[Title/Abstract] OR "cov-19"[Title/Abstract] OR "19nCoV"[Title/Abstract] OR  
 327 "COVID19"[Title/Abstract] OR "COVID2019"[Title/Abstract] 382,642  
 328 4 #2 AND #3 83,020  
 329 3 (("Epidemics"[Mesh:NoExp]) OR "Pandemics"[Mesh:NoExp]) OR "Disease  
 330 Outbreaks"[Mesh:NoExp] 226,548  
 331 2 (((("Coronaviridae"[Mesh:NoExp]) OR "Coronavirus"[Mesh]) OR "Betacoronavirus"[Mesh:NoExp])  
 332 OR "Coronavirus Infections"[Mesh:NoExp] 185,366  
 333 1 ("COVID-19"[Mesh]) OR "Severe acute respiratory syndrome-related coronavirus"[Mesh]  
 334 258,558  
 335

336 **The PubMed strategy was updated on 1.2.24 (92 records) and 1.3.24 (68 records).**

337  
 338 *COVID facet based on terms from:*

339  
 340 World Health Organization (26 May 2021) WHO COVID-19 Database Search Strategy. Systematic search of  
 341 the COVID-19 literature performed Monday through Friday for the WHO Database. Search strategy as of 26  
 342 May 2021. Searches performed by Tomas Allen, Kavita Kothari, and Martha Knuth. Available from:  
 343 [https://www.who.int/docs/default-source/coronaviruse/who-covid-19-database/who-covid-  
 344 19\\_sources\\_searchstrategy\\_20210526.pdf?sfvrsn=65209cc2\\_5](https://www.who.int/docs/default-source/coronaviruse/who-covid-19-database/who-covid-19_sources_searchstrategy_20210526.pdf?sfvrsn=65209cc2_5)  
 345

346 Canadian Agency for Drugs and Technologies in Health (2.9.21) CADTH COVID-19 Search Strings: COVID-  
 347 19 — EMBASE (Internet). Available from: [https://covid.cadth.ca/literature-searching-tools/cadth-covid-19-  
 348 search-strings/](https://covid.cadth.ca/literature-searching-tools/cadth-covid-19-search-strings/)  
 349

350 NICE (18 December 2020) [accessed 17.8.21] COVID-19 rapid guideline: managing the long-term effects of  
 351 COVID-19 [NG188]. Search history record [PDF]. NICE: London. Available from:  
 352 <https://www.nice.org.uk/guidance/ng188/evidence/search-strategies-pdf-8957634445>  
 353

354  
 355 *Observational study design filter adapted from:*

356 Scottish Intercollegiate Guidelines Network (SIGN). Search filters: observational studies. Medline. Edinburgh:  
 357 SIGN, Last Modified 24/04/17 Available from: <https://www.sign.ac.uk/what-we-do/methodology/search-filters/>  
 358

359 *PubMed limit:*

360 Duffy S, de Kock S, Misso K, Noake C, Ross J, Stirk L. Supplementary searches of PubMed to improve  
 361 currency of MEDLINE and MEDLINE In-Process searches via Ovid. J Med Libr Assoc. 2016 Oct;104(4):309-  
 362 312. doi: 10.3163/1536-5050.104.4.011. <https://www.ncbi.nlm.nih.gov/pmc/articles/PMC5079494/>  
 363

364 **Europe PMC, including medRxiv and bioRxiv preprints (Internet): up to 2024/01/04**

365 Searched 4.1.24

366 <https://europepmc.org/>  
 367

Search terms	Results
((TITLE:"COVID-19" OR TITLE:"coronavirus" OR TITLE:"COVID" OR TITLE:"NCOV" OR TITLE:"SARS-CoV-2") AND (TITLE:"risk" OR TITLE:"risks" OR TITLE:"hazard" OR TITLE:"hazards" OR TITLE:"probability" OR TITLE:" probabilities" OR TITLE:"likelihood" OR TITLE:"morbidity" OR TITLE:"comorbidity" OR TITLE:"predict" OR TITLE:"predictive" OR TITLE:"HR" OR TITLE:"RR" OR TITLE:"aiRR" OR TITLE:"aOR" OR TITLE:"adjusted OR") AND (TITLE:"2022" OR TITLE:"2023" OR TITLE:"strain" OR TITLE:"strains" OR TITLE:"variant" OR TITLE:"variants" OR TITLE:"mutation" OR TITLE:"mutations" OR TITLE:"omicron" OR TITLE:"omicron"))	<b>89</b>

368  
369  
370  
371  
372  
373  
374  
375  
376  
377  
378  
379  
380  
381  
382  
383  
384  
385  
386  
387  
388  
389  
390  
391  
392  
393  
394  
395  
396  
397  
398  
399  
400  
401  
402  
403  
404  
405  
406  
407  
408  
409

*The Europe PMC strategy was updated on 1.2.24 (0 records) and 1.3.24 (3 records).*

**Latin American and Caribbean Health Sciences Literature (LILACS) (Internet): 2022-2024/01/07 Searched 4.1.24**

<https://search.bvsalud.org/portal/?lang=en>

Searched Title/Abstract/Subject  
Limited to Observational studies  
Limited to 2022-2024/01/04  
Limited to LILACS only

((COVID OR NCOV OR coronavirus OR COVID19 OR "SARs-COV-2" OR Omicron OR omicron)) AND ((mortality OR death OR deaths OR fatal OR fatality OR fatalities OR survival OR "close attention unit" OR "close attention units" OR "intensive care" OR "respiratory care unit" OR "respiratory care units" OR "special care unit" OR "special care units" OR "high dependency unit" OR "high dependency units" OR ICU OR ICUs OR CCU OR CCUs OR GICU OR GICUs OR HDU OR HDUs OR ITU OR ITUs OR Hospitalized OR Hospitalised population OR Hospitalization OR Hospitalisation OR Hospitalizations OR Hospitalisations OR "hospital Admission" OR "hospital Admissions" OR "Critical Care" OR "length of stay" OR "duration of stay" OR "extended stay" OR "prolonged stay" OR "hospital stay" OR "in-patient stay" OR "inpatient stay" OR "inpatient stays" OR "inpatient stays" ) AND ((risk OR risks OR risky OR danger OR dangers OR dangerous OR association OR associations OR peril OR jeopardy OR jeopardise OR jeopardize OR threat OR threats OR chance OR chances OR hazard OR hazards OR hazardous OR gamble OR gambles OR gambling OR probability OR probabilities OR "at stake" OR endanger OR endangers OR endangered OR endangering OR associate OR associates OR associating OR association OR likelihood OR likelihoods OR possibility OR possibilities OR correlation OR correlations OR odds OR morbidity OR comorbidity OR "co-morbidity" OR morbidities OR comorbidities OR "co-morbidities" OR incidence OR prevalence OR predict OR predicted OR predictive OR prognosis OR prediction OR predictions OR HR OR RR OR aiRR OR aOR OR "adjusted OR")) AND ((2022 OR 2023 OR 2024 OR strain OR strains OR variant OR variants OR mutations OR mutation OR omikron OR Omicron OR "B.1.1.529" OR "B11529" OR xbb) )

N=38

*The LILACS strategy was updated on 1.2.24 (3 records) and 1.3.24 (0 records).*

**Cochrane COVID-19 Study Register (www): 2022-2024/01/04 Searched 4.1.24**

<https://covid-19.cochrane.org/>

Limited to Observational cohort studies.  
Limited 2022-2024/01/04

410 (mortality OR death OR deaths OR fatal OR fatality OR fatalities OR survival OR "close attention unit" OR  
411 "close attention units" OR "intensive care" OR "respiratory care unit" OR "respiratory care units" OR "special  
412 care unit" OR "special care units" OR "high dependency unit" OR "high dependency units" OR ICU OR ICUs  
413 OR CCU OR CCUs OR GICU OR GICUs OR HDU OR HDUs OR ITU OR ITUs OR Hospitalized OR  
414 Hospitalised population OR Hospitalization OR Hospitalisation OR Hospitalizations OR Hospitalisations OR  
415 "hospital Admission" OR "hospital Admissions" OR "Critical Care" OR "length of stay" OR "duration of stay"  
416 OR "extended stay" OR "prolonged stay" OR "hospital stay" OR "in-patient stay" OR "inpatient stay" OR "in-  
417 patient stays" OR "inpatient stays") AND (risk OR risks OR risky OR danger OR dangers OR dangerous OR  
418 association OR associations OR peril OR jeopardy OR jeopardise OR jeopardize OR threat OR threats OR  
419 chance OR chances OR hazard OR hazards OR hazardous OR gamble OR gambles OR gambling OR  
420 probability OR probabilities OR "at stake" OR endanger OR endangers OR endangered OR endangering OR  
421 associate OR associates OR associating OR association OR likelihood OR likelihoods OR possibility OR  
422 possibilities OR correlation OR correlations OR odds OR morbidity OR comorbidity OR "co-morbidity" OR  
423 morbidities OR comorbidities OR "co-morbidities" OR incidence OR prevalence OR predict OR predicted OR  
424 predictive OR prognosis OR prediction OR predictions OR HR OR RR OR aiRR OR aOR OR "adjusted OR")  
425 AND (2022 OR 2023 OR 2024 OR strain OR strains OR variant OR variants OR mutations OR mutation OR  
426 omikron OR Omicron OR "B.1.1.529" OR "B11529" OR xbb) AND (cohort OR cohorts OR observational OR  
427 "follow up" OR followup OR epidemiologic OR epidemiological OR longterm OR "long term" OR longitudinal  
428 OR prospective)

429  
430 **N=3814**

431  
432 *The Cochrane COVID-19 Study Register strategy was updated on 1.2.24 (0 records) and 1.3.24 (59 records).*

433  
434 **WHO COVID-19 (Internet): 2022-2024/01/03**

435 **Searched 3.1.24**

436 <https://search.bvsalud.org/global-literature-on-novel-coronavirus-2019-ncov/?lang=en>

437  
438 Advanced search (title only)

439  
440 (ti:(mortality OR death OR deaths OR fatal OR fatality OR fatalities OR survival OR "close attention unit" OR  
441 "close attention units" OR "intensive care" OR "respiratory care unit" OR "respiratory care units" OR "special  
442 care unit" OR "special care units" OR "high dependency unit" OR "high dependency units" OR ICU OR ICUs  
443 OR CCU OR CCUs OR GICU OR GICUs OR HDU OR HDUs OR ITU OR ITUs OR Hospitalized OR  
444 Hospitalised population OR Hospitalization OR Hospitalisation OR Hospitalizations OR Hospitalisations OR  
445 "hospital Admission" OR "hospital Admissions" OR "Critical Care" OR "length of stay" OR "duration of stay"  
446 OR "extended stay" OR "prolonged stay" OR "hospital stay" OR "in-patient stay" OR "inpatient stay" OR "in-  
447 patient stays" OR "inpatient stays")) AND (ti:(risk OR risks OR risky OR danger OR dangers OR dangerous OR  
448 association OR associations OR peril OR jeopardy OR jeopardise OR jeopardize OR threat OR threats OR  
449 chance OR chances OR hazard OR hazards OR hazardous OR gamble OR gambles OR gambling OR  
450 probability OR probabilities OR "at stake" OR endanger OR endangers OR endangered OR endangering OR  
451 associate OR associates OR associating OR association OR likelihood OR likelihoods OR possibility OR  
452 possibilities OR correlation OR correlations OR odds OR morbidity OR comorbidity OR "co-morbidity" OR  
453 morbidities OR comorbidities OR "co-morbidities" OR incidence OR prevalence OR predict OR predicted OR  
454 predictive OR prognosis OR prediction OR predictions OR HR OR RR OR aiRR OR aOR OR "adjusted OR"))

455  
456 Limited to Observational and cohort studies.

457 Limited 2022-2023/06.

458  
459 **N=2268**

460  
461 \* WHO COVID-19 database ceased on June 2023, therefore update searches were not necessary.

462

**463 Search 2: Protective effect of vaccination on burden/risk of COVID-19 infection search strategies**

464

465 **Embase (Ovid): 2022-2023/12/29**466 **Searched 2.1.24**

467

468 1 exp coronavirus disease 2019/ 374674

469 2 sars-related coronavirus/ or exp Severe acute respiratory syndrome coronavirus 2/ 106902

470 3 (coronavirinae/ or betacoronavirus/ or coronavirus infection/) and (epidemic/ or pandemic/)

471 10615

472 4 (Coronavirus\$ or "covid 19" or 2019-ncov).ti,ab,kw,kf,ot. 430070

473 5 (2019-ncov or 2019ncov or corona-virus\$ or cov19 or cov-19 or 19nCoV or COVID19 or COVID2019

474 or "COVID-19 2019").ti,ab,kw,kf,ot. 15833

475 6 (ncov\$ or "sars cov\$" or sarscov\$ or "sars coronavirus\$" or coronavirus\$ or corono\$ virus\$ or "19-

476 nCoV\$" or 19nCoV\$).ti,ab,kw,kf,ot. 160670

477 7 (SARS2\$ or "SARS-2\$" or SARScoronavirus\$ or SARS-coronavirus\$ or SARScoronavirus\$ or

478 SARS-coronavirus\$).ti,ab,kw,kf,ot. 2922

479 8 ("HCoV-19\$" or HCoV19\$ or "HCoV-2019\$" or HCoV2019\$).ti,ab,kw,kf,ot. 70

480 9 ("2019 novel\$" or Ncov\$).ti,ab,kw,kf,ot. 5843

481 10 ("Severe Acute Respiratory Syndrome Coronavirus 2" or "Severe Acute Respiratory Syndrome Corona

482 Virus 2").ti,ab,kw,kf,ot. 36797

483 11 or/1-10 496535

484 12 ("2022" or "2023").ti,ab,ot. 235450

485 13 11 and 12 26927

486 14 (strain or strains or variant\$ or mutation\$).ti,ab,ot,kf,kw. 2383716

487 15 11 and 14 36992

488 16 exp "SARS-CoV-2 (lineage B.1.1)"/ 8191

489 17 exp "SARS-CoV-2 Omicron"/ 7250

490 18 (omikron or Omicron or "B.1.1.529" or "B11529" or xbb\$).af. 13566

491 19 or/16-18 14551

492 20 or/13,15,19 63058

493 21 Clinical study/ 165138

494 22 Case control study/ 211296

495 23 Family study/ 25764

496 24 Longitudinal study/ 203445

497 25 Retrospective study/ 1544157

498 26 Prospective study/ 899644

499 27 Randomized controlled trials/ 267337

500 28 26 not 27 888668

501 29 Cohort analysis/ 1096585

502 30 (Cohort adj (study or studies)).mp. 493516

503 31 (Case control adj (study or studies)).tw. 171865

504 32 (follow up adj (study or studies)).tw. 74874

505 33 (observational adj (study or studies)).tw. 264634

506 34 (epidemiologic\$ adj (study or studies)).tw. 123898

507 35 (cross sectional adj (study or studies)).tw. 356386

508 36 or/21-25,28-35 4072059

509 37 animal/ or animal experiment/ 4720382

510 38 (rat or rats or mouse or mice or murine or rodent or rodents or hamster or hamsters or pig or pigs or

511 porcine or rabbit or rabbits or animal or animals or dogs or dog or cats or cow or bovine or sheep or ovine or

512 monkey or monkeys).ti,ab,ot,hw. 7724982

513 39 or/37-38 7724982

514 40 human experiment/ or exp humans/ 25973725

515 41 39 not (39 and 40) 5781960

516 42 36 not 41 4009600

517 43 limit 42 to yr="2022 -Current" 754329

518 44 43 not (letter or editorial or conference or "conference abstract" or "conference paper" or "conference

519 review").pt. 555478

520 45 mortality/ or death/ or "cause of death"/ or survival rate/ 1478645

521	46	(mortalit\$ or death\$ or fatal\$ or survival).ti,ab,ot,kf,kw.	4124730
522	47	exp intensive care/ or exp intensive care unit/ or high dependency unit/	1066416
523	48	(close attention unit\$ or intensive care or respiratory care unit or respiratory care units or special care	
524		unit or special care units or high dependency unit or high dependency units).ti,ab,ot,kf,kw.	298895
525	49	(ICU or ICUs or CCU or CCUs or GICU or GICUs or HDU or HDUs or ITU or ITUs).ti,ab,ot,kf,kw.	
526		187026	
527	50	(Hospitaliz\$ or Hospitalis\$ or (hospital adj2 Admission\$) or Critical Care).ti,ab,ot,kf,kw.	716741
528	51	hospitalization/	546684
529	52	("length of stay" or "duration of stay" or "extended stay" or "prolonged stay" or "hospital	
530		stay").ti,ab,ot,hw.	412206
531	53	("in-patient stay" or "inpatient stay" or "in-patient stays" or "inpatient stays").ti,ab,ot,hw.	7835
532	54	exp risk/ or exp risk factor/ or exp risk assessment/	3170934
533	55	hazard ratio/ or odds ratio/	99395
534	56	mortality risk/	46876
535	57	(risk\$ or danger\$ or association\$ or peril or jeopard\$ or threat\$ or chance or chances or hazard\$ or	
536		gamble\$ or probabilit\$ or "at stake" or endanger\$ or associat\$ or likelihood\$ or possibilit\$ or correlation\$ or	
537		odds or "vaccine effectiveness" or "immune evasion" or "immunity evasion").ti,ab,ot,kf,kw.	12518691
538	58	(morbidity\$ or comorbid\$ or co-morbid\$).ti,ab,ot,kf,kw.	1138678
539	59	(incidence or prevalence or predict\$ or prognosis).ti,ab,ot,kf,kw.	5507851
540	60	(HR or RR or aiRR or aOR or "adjusted OR").ti,ab,ot,kf,kw.	753007
541	61	disease severity assessment/ or covid-19 severity score/ or global severity index/ or quick covid-19	
542		severity index/ or "severity of illness index"/	32588
543	62	morbidity/	416716
544	63	disease severity/ or critical illness/ or emergency status/ or urgency status/	772357
545	64	((severe or severity) adj3 (disease\$ or infection\$ or illness\$ or complication\$ or condition\$ or	
546		illhealth\$ or ill-health\$ or sickness or virus or infirmity or affliction\$)).ti,ab,ot,kf,kw.	423477
547	65	morbidity\$.ti,ab,ot,kf,kw.	754095
548	66	or/45-65	18057098
549	67	Tozinameran/	11540
550	68	((pfizer\$ or biontech) adj5 vaccin\$).ti,ab,ot,kf,kw,hw,du,dy,tn,rn.	4443
551	69	(tozinameran or Comirnaty or "Pfizer-BioNTech" or "pf07302048" or "pf-07302048" or "BNT-162b2"	
552		or "BNT162b2" or Pidacmeran or "BNT162C2" or "BNT-162C2" or Abdavomeran or "BNT-162B1" or	
553		"BNT162B1" or "BNT162A1" or "BNT-162A1").ti,ab,ot,kf,kw,hw,du,dy,tn,rn.	15132
554	70	"Pfizer-BioNTech".mf.	947
555	71	"2417899-77-3".af.	12357
556	72	elasomeran/	6806
557	73	(Elasomeran or moderna or Spikevax or davesomeran or imelasomeran or andusomeran or "mRNA	
558		1273" or "mRNA1273" or "mRNA-1273.211" or "mRNA 1273.211" or Spikevax or "M-1273" or "M1273" or	
559		"CX-024414" or "CX024414" or "TAK-919" or "TAK919").ti,ab,ot,kf,kw,hw,du,dy,tn,rn.	9771
560	74	("2430046-03-8" or "2457298-05-2").af.	6468
561	75	RNA vaccine/	5844
562	76	((("messenger RNA" or mrna or "RNA based") adj4 (vaccin\$ or jab or jabs or shot or shots or immunis\$	
563		or immuniz\$)).ti,ab,ot,kf,kw.	12887
564	77	or/67-76	25983
565	<b>78</b>	<b>and/20,44,66,77</b>	<b>1628</b>

566  
567 *The Embase strategy was updated on 1.2.24 (110 records) and 1.3.24 (86 records).*

568  
569 *COVID facet based on terms from:*

570  
571 World Health Organization (26 May 2021) WHO COVID-19 Database Search Strategy. Systematic search of  
572 the COVID-19 literature performed Monday through Friday for the WHO Database. Search strategy as of 26  
573 May 2021. Searches performed by Tomas Allen, Kavita Kothari, and Martha Knuth. Available from:  
574 [https://www.who.int/docs/default-source/coronaviruse/who-covid-19-database/who-covid-](https://www.who.int/docs/default-source/coronaviruse/who-covid-19-database/who-covid-19_sources_searchstrategy_20210526.pdf?sfvrsn=65209cc2_5)  
575 [19\\_sources\\_searchstrategy\\_20210526.pdf?sfvrsn=65209cc2\\_5](https://www.who.int/docs/default-source/coronaviruse/who-covid-19-database/who-covid-19_sources_searchstrategy_20210526.pdf?sfvrsn=65209cc2_5)  
576



577 Canadian Agency for Drugs and Technologies in Health (2.9.21) CADTH COVID-19 Search Strings: COVID-  
 578 19 — EMBASE (Internet). Available from: [https://covid.cadth.ca/literature-searching-tools/cadth-covid-19-  
 579 search-strings/](https://covid.cadth.ca/literature-searching-tools/cadth-covid-19-search-strings/)

580  
 581 NICE (18 December 2020) [accessed 17.8.21] COVID-19 rapid guideline: managing the long-term effects of  
 582 COVID-19 [NG188]. Search history record [PDF]. NICE: London. Available from:  
 583 <https://www.nice.org.uk/guidance/ng188/evidence/search-strategies-pdf-8957634445>

584  
 585 *Observational study design filter adapted from:*

586  
 587 Scottish Intercollegiate Guidelines Network (SIGN). Search filters: observational studies. Embase. Edinburgh:  
 588 SIGN, Last Modified 24/04/17 Available from: <https://www.sign.ac.uk/what-we-do/methodology/search-filters/>

589  
 590 Observational Studies - Embase. In: CADTH Search Filters Database. Ottawa: CADTH; 2023 [accessed  
 591 7.11.23]: <https://searchfilters.cadth.ca/link/37>

592  
 593 **Medline ALL (Ovid): 2022-2024/01/02**

594 **Searched 2.1.24**

595  
 596 1 exp COVID-19/ 250794  
 597 2 exp Severe acute respiratory syndrome-related coronavirus/ 166686  
 598 3 coronaviridae/ or exp coronavirus/ 178833  
 599 4 Betacoronavirus/ 33277  
 600 5 Coronavirus Infections/ 46094  
 601 6 or/3-5 185838  
 602 7 epidemics/ or pandemics/ 139078  
 603 8 Disease Outbreaks/ 92374  
 604 9 or/7-8 226884  
 605 10 6 and 9 83151  
 606 11 (Coronavirus\$ or "covid 19" or 2019-ncov).ti,ab,kw,kf,ot. 385791  
 607 12 (2019-ncov or 2019ncov or corona-virus\$ or cov19 or cov-19 or 19nCoV or COVID19 or COVID2019  
 608 or "COVID-19 2019").ti,ab,kw,kf,ot. 10202  
 609 13 (ncov\$ or "sars cov\$" or sarscov\$ or "sars coronavirus\$" or coronavirus\$ or coronov\$ virus\$ or "19-  
 610 nCoV\$" or 19nCoV\$).ti,ab,kw,kf,ot. 140222  
 611 14 (SARS2\$ or "SARS-2\$" or SARScoronavirus\$ or SARS-coronavirus\$ or SARScoronavirus\$ or  
 612 SARS-coronavirus\$).ti,ab,kw,kf,ot. 2635  
 613 15 ("HCoV-19\$" or HCoV19\$ or "HCoV-2019\$" or HCoV2019\$).ti,ab,kw,kf,ot. 66  
 614 16 ("2019 novel\$" or Ncov\$).ti,ab,kw,kf,ot. 5236  
 615 17 ("Severe Acute Respiratory Syndrome Coronavirus 2" or "Severe Acute Respiratory Syndrome Corona  
 616 Virus 2").ti,ab,kw,kf,ot. 36907  
 617 18 or/1-2,10-17 416995  
 618 19 ("2022" or "2023").ti,ab,ot. 153808  
 619 20 18 and 19 17876  
 620 21 (strain or strains or variant\$ or mutation\$).ti,ab,ot,kf,kw. 1916135  
 621 22 18 and 21 32095  
 622 23 (omikron or Omicron or "B.1.1.529" or "B11529" or xbb\$).af. 9846  
 623 24 or/20,22-23 48695  
 624 25 Epidemiologic studies/ 9457  
 625 26 exp case control studies/ 1470108  
 626 27 exp cohort studies/ 2556574  
 627 28 Case control.tw. 158730  
 628 29 Longitudinal.tw. 335439  
 629 30 Retrospective.tw. 782068  
 630 31 Cross sectional.tw. 540774  
 631 32 Cross-sectional studies/ 487981  
 632 33 Observational Studies as Topic/ 9294  
 633 34 (observational adj3 (study or studies or design or analysis or analyses)).ti,ab,kf. 234202  
 634 35 ((follow up or followup) adj7 (study or studies or design or analysis or analyses)).ti,ab,kf. 175238

635	36	(epidemiologic\$ adj3 (study or studies or design or analysis or analyses)).ti,ab,kf.	119921
636	37	((longterm or (long adj term)) adj7 (study or studies or design or analysis or analyses or data)).ti,ab,kf.	
637		160631	
638	38	(cohort\$ adj3 (study or studies or design or analysis or analyses or data)).ti,ab,kf.	420054
639	39	(prospective adj7 (study or studies or design or analysis or analyses)).ti,ab,kf.	551875
640	40	or/25-39 4243864	
641	41	animals/ not (animals/ and humans/)	5148855
642	42	40 not 41	4139882
643	43	42 not (case reports or clinical conference or comment or editorial or letter).pt.	3929840
644	44	limit 43 to yr="2022 -Current"	538850
645	45	mortality/ or "cause of death"/ or fatal outcome/ or hospital mortality/ or survival rate/ or Death/	
646		408166	
647	46	(mortalit\$ or death\$ or fatal\$ or survival).ti,ab,ot,kf,kw.	2881687
648	47	exp Critical Care/ or exp Intensive Care Units/	159166
649	48	(close attention unit\$ or intensive care or respiratory care unit or respiratory care units or special care	
650		unit or special care units or high dependency unit or high dependency units).ti,ab,ot,kf,kw.	202827
651	49	(ICU or ICUs or CCU or CCUs or GICU or GICUs or HDU or HDUs or ITU or ITUs).ti,ab,ot,kf,kw.	
652		95415	
653	50	(Hospitaliz\$ or Hospitalis\$ or (hospital adj2 Admission\$) or Critical Care).ti,ab,ot,kf,kw.	436800
654	51	Hospitalization/ or "Length of Stay"/	228750
655	52	("length of stay" or "duration of stay" or "extended stay" or "prolonged stay" or "hospital	
656		stay").ti,ab,ot,hw.	220112
657	53	("in-patient stay" or "inpatient stay" or "in-patient stays" or "inpatient stays").ti,ab,ot,hw.	3851
658	54	exp risk/ or odds ratio/ or proportional hazards models/ or life tables/	1482224
659	55	(risk\$ or danger\$ or association\$ or peril or jeopard\$ or threat\$ or chance or chances or hazard\$ or	
660		gamble\$ or probabilit\$ or "at stake" or endanger\$ or associat\$ or likelihood\$ or possibilit\$ or correlation\$ or	
661		odds or "vaccine effectiveness" or "immune evasion" or "immunity evasion").ti,ab,ot,kf,kw.	9321739
662	56	(morbidit\$ or comorbid\$ or co-morbid\$).ti,ab,ot,kf,kw.	716968
663	57	(incidence or prevalence or predict\$ or prognosis).ti,ab,ot,kf,kw.	3993128
664	58	(HR or RR or aiRR or aOR or "adjusted OR").ti,ab,ot,kf,kw.	471257
665	59	"severity of illness index"/ or sickness impact profile/	277780
666	60	patient acuity/ or early warning score/	3345
667	61	Morbidity/	34586
668	62	Critical Illness/	39796
669	63	Emergencies/	43459
670	64	((severe or severity) adj3 (disease\$ or infection\$ or illness\$ or complication\$ or condition\$ or	
671		illhealth\$ or ill-health\$ or sickness or virus or infirmity or affliction\$)).ti,ab,ot,kf,kw.	285081
672	65	or/45-64 13120377	
673	66	exp mRNA Vaccines/	5326
674	67	((pfizer\$ or biontech) adj5 vaccin\$).ti,ab,ot,kf,kw,hw,nm,rm.	3046
675	68	(tozinameran or Comirnaty or "Pfizer-BioNTech" or "pf07302048" or "pf-07302048" or " BNT-162b2"	
676		or "BNT162b2" or Pidacmeran or "BNT162C2" or "BNT-162C2" or Abdavomeran or "BNT-162B1" or	
677		"BNT162B1" or "BNT162A1" or "BNT-162A1").ti,ab,ot,kf,kw,hw,nm,rm.	6421
678	69	"Pfizer-BioNTech".af.	2384
679	70	"2417899-77-3".af.	0
680	71	(Elasomeran or moderna or Spikevax or davesomeran or imelasomeran or andusomeran or "mRNA	
681		1273" or "mRNA1273" or "mRNA-1273.211" or "mRNA 1273.211" or Spikevax or "M-1273" or "M1273" or	
682		"CX-024414" or "CX024414" or "TAK-919" or "TAK919").ti,ab,ot,kf,kw,hw,nm,rm.	4118
683	72	("2430046-03-8" or "2457298-05-2").af.	0
684	73	(("messenger RNA" or mrna or "RNA based") adj4 (vaccin\$ or jab or jabs or shot or shots or immunis\$	
685		or immuniz\$)).ti,ab,ot,kf,kw.	10148
686	74	or/66-73 15059	
687	75	<b>24 and 44 and 74 and 65 825</b>	

*The Medline ALL strategy was updated on 1.2.24 (51 records) and 1.3.24 (63 records).*

*COVID facet based on terms from:*

692



693 World Health Organization (26 May 2021) WHO COVID-19 Database Search Strategy. Systematic search of  
 694 the COVID-19 literature performed Monday through Friday for the WHO Database. Search strategy as of 26  
 695 May 2021. Searches performed by Tomas Allen, Kavita Kothari, and Martha Knuth. Available from:  
 696 [https://www.who.int/docs/default-source/coronaviruse/who-covid-19-database/who-covid-  
 697 19\\_sources\\_searchstrategy\\_20210526.pdf?sfvrsn=65209cc2\\_5](https://www.who.int/docs/default-source/coronaviruse/who-covid-19-database/who-covid-19_sources_searchstrategy_20210526.pdf?sfvrsn=65209cc2_5)  
 698  
 699 Canadian Agency for Drugs and Technologies in Health (2.9.21) CADTH COVID-19 Search Strings: COVID-  
 700 19 — EMBASE (Internet). Available from: [https://covid.cadth.ca/literature-searching-tools/cadth-covid-19-  
 701 search-strings/](https://covid.cadth.ca/literature-searching-tools/cadth-covid-19-search-strings/)  
 702  
 703 NICE (18 December 2020) [accessed 17.8.21] COVID-19 rapid guideline: managing the long-term effects of  
 704 COVID-19 [NG188]. Search history record [PDF]. NICE: London. Available from:  
 705 <https://www.nice.org.uk/guidance/ng188/evidence/search-strategies-pdf-8957634445>  
 706  
 707 *Observational study design filter adapted from:*  
 708  
 709 Observational study design filter adapted from:  
 710 Scottish Intercollegiate Guidelines Network (SIGN). Search filters: observational studies. Medline. Edinburgh:  
 711 SIGN, Last Modified 24/04/17 Available from: <https://www.sign.ac.uk/what-we-do/methodology/search-filters/>  
 712  
 713 Observational Studies - Medline. In: CADTH Search Filters Database. Ottawa: CADTH; 2023 [accessed  
 714 7.11.23]:  
 715 [https://searchfilters.cadth.ca/list?q=topic%3A%22Observational%20studies%22&p=1&ps=&sort=title\\_sort%20  
 716 asc](https://searchfilters.cadth.ca/list?q=topic%3A%22Observational%20studies%22&p=1&ps=&sort=title_sort%20asc)  
 717  
 718 **PubMed (NLM): 2022-2024/01/03**  
 719 **Searched 3.1.24**  
 720 <https://pubmed.ncbi.nlm.nih.gov/>  
 721  
 722 **32 #13 AND #24 AND #31 AND #25 281**  
 723 31 #26 OR #27 OR #28 OR #29 OR #30 19,625  
 724 30 ((("messenger RNA"[Title/Abstract] OR mrna[Title/Abstract] OR "RNA based"[Title/Abstract]) AND  
 725 (vaccine[Title/Abstract] OR vaccines[Title/Abstract] OR vaccination[Title/Abstract] OR jab[Title/Abstract] OR  
 726 jabs[Title/Abstract] OR shot[Title/Abstract] OR shots[Title/Abstract] OR immunise[Title/Abstract] OR  
 727 immunised[Title/Abstract] OR immunisation[Title/Abstract] OR immunize[Title/Abstract] OR  
 728 immunized[Title/Abstract] OR immunization[Title/Abstract])) 15,979  
 729 29 Elasmomaran[Title/Abstract] OR moderna[Title/Abstract] OR Spikevax[Title/Abstract] OR  
 730 davesomeran[Title/Abstract] OR imelasomeran[Title/Abstract] OR andusomeran[Title/Abstract] OR "mRNA  
 731 1273"[Title/Abstract] OR "mRNA1273"[Title/Abstract] OR "mRNA-1273.211"[Title/Abstract] OR "mRNA  
 732 1273.211"[Title/Abstract] OR Spikevax[Title/Abstract] OR "M-1273"[Title/Abstract] OR  
 733 "M1273"[Title/Abstract] OR "CX-024414"[Title/Abstract] OR "CX024414"[Title/Abstract] OR "TAK-  
 734 919"[Title/Abstract] OR "TAK919"[Title/Abstract] OR "2430046-03-8"[Title/Abstract] OR "2457298-05-  
 735 2"[Title/Abstract] 3,072  
 736 28 tozinameran[Title/Abstract] OR Comirnaty[Title/Abstract] OR "Pfizer-BioNTech"[Title/Abstract] OR  
 737 "pf07302048"[Title/Abstract] OR "pf-07302048"[Title/Abstract] OR " BNT-162b2"[Title/Abstract] OR  
 738 "BNT162b2"[Title/Abstract] OR Pidacmeran[Title/Abstract] OR "BNT162C2"[Title/Abstract] OR "BNT-  
 739 162C2"[Title/Abstract] OR Abdavomeran[Title/Abstract] OR "BNT-162B1"[Title/Abstract] OR  
 740 "BNT162B1"[Title/Abstract] OR "BNT162A1"[Title/Abstract] OR "BNT-162A1"[Title/Abstract] OR "Pfizer-  
 741 BioNTech"[Title/Abstract] OR "2417899-77-3"[Title/Abstract] 6,392  
 742 27 ((pfizer[Title/Abstract] OR biontech[Title/Abstract]) AND (vaccine[Title/Abstract] OR  
 743 vaccines[Title/Abstract])) 3,668  
 744 26 "mRNA Vaccines"[Mesh] 5,307  
 745 25 pubstatusaheadofprint OR publisher[sb] OR pubmednotmedline[sb] 5,627,356  
 746 24 #22 AND #23 493,476  
 747 23 ("2022/01/01"[Date - Publication] : "3000"[Date - Publication]) 3,253,097  
 748 22 #20 NOT #21 3,739,291  
 749 21 LETTER[Publication Type] OR EDITORIAL[Publication Type] OR COMMENT[Publication Type]  
 750 2,213,615

751 20 #16 NOT #19 3,825,199  
 752 19 #18 NOT (#18 AND #17) 3,757,858  
 753 18 rat[tiab] or rats[tiab] or mouse[tiab] or mice[tiab] or murine[tiab] or rodent[tiab] or rodents[tiab] or  
 754 hamster[tiab] or hamsters[tiab] or pig[tiab] or pigs[tiab] or porcine[tiab] or rabbit[tiab] or rabbits[tiab] or  
 755 animal[tiab] or animals[tiab] or dogs[tiab] or dog[tiab] or cats[tiab] or cow[tiab] or bovine[tiab] or sheep[tiab]  
 756 or ovine[tiab] or monkey[tiab] or monkeys[tiab] 4,715,684  
 757 17 Human\*[tiab] 3,295,660  
 758 16 #14 OR #15 3,914,514  
 759 15 (((("Epidemiologic Studies"[Mesh:NoExp]) OR "Case-Control Studies"[Mesh]) OR "Cohort  
 760 Studies"[Mesh]) OR "Cross-Sectional Studies"[Mesh:NoExp] 3,195,884  
 761 14 "Case control"[Title/Abstract] OR "cohort study"[Title/Abstract] OR "cohort studies"[Title/Abstract]  
 762 OR "cohort analysis"[Title/Abstract] OR "cohort analyses"[Title/Abstract] OR "follow up study"[Title/Abstract]  
 763 OR "follow up studies"[Title/Abstract] OR "observational study"[Title/Abstract] OR "observational  
 764 studies"[Title/Abstract] OR Longitudinal[Title/Abstract] OR Retrospective[Title/Abstract] OR "Cross  
 765 sectional"[Title/Abstract] 2,068,573  
 766 13 #9 OR #11 OR #12 47,832  
 767 12 omikron[Title/Abstract] OR Omicron[Title/Abstract] OR "B.1.1.529"[Title/Abstract] OR  
 768 "B11529"[Title/Abstract] OR xbb[Title/Abstract] 9,468  
 769 11 #7 AND #10 31,553  
 770 10 strain[Title/Abstract] OR strains[Title/Abstract] OR variant[Title/Abstract] OR variants[Title/Abstract]  
 771 OR mutation[Title/Abstract] OR mutations[Title/Abstract] 1,893,774  
 772 9 #7 AND #8 17,832  
 773 8 "2022"[Title/Abstract] OR "2023"[Title/Abstract] 158,464  
 774 7 #1 OR #4 OR #5 OR #6 412,676  
 775 6 "COVID-19 2019"[Title/Abstract] OR ncov[Title/Abstract] OR "sars cov"[Title/Abstract] OR  
 776 sarscov[Title/Abstract] OR "sars coronavirus"[Title/Abstract] OR coronavirus[Title/Abstract] OR "corono  
 777 virus"[Title/Abstract] OR "19-nCoV"[Title/Abstract] OR "19nCoV"[Title/Abstract] OR  
 778 "SARS2"[Title/Abstract] OR "SARS-2"[Title/Abstract] OR SARScoronavirus[Title/Abstract] OR "SARS-  
 779 coronavirus"[Title/Abstract] OR SARScoronavirus[Title/Abstract] OR "SARS-coronavirus"[Title/Abstract] OR  
 780 "HCoV-19"[Title/Abstract] OR "HCoV19"[Title/Abstract] OR "HCoV-2019"[Title/Abstract] OR  
 781 "HCoV2019"[Title/Abstract] OR "2019 novel"[Title/Abstract] OR "Severe Acute Respiratory Syndrome  
 782 Coronavirus 2"[Title/Abstract] OR "Severe Acute Respiratory Syndrome Corona Virus 2"[Title/Abstract]  
 783 141,123  
 784 5 "Coronavirus"[Title/Abstract] OR "covid 19"[Title/Abstract] OR "2019-ncov"[Title/Abstract] OR  
 785 "2019-ncov"[Title/Abstract] OR "2019ncov"[Title/Abstract] OR "corona-virus"[Title/Abstract] OR  
 786 "cov19"[Title/Abstract] OR "cov-19"[Title/Abstract] OR "19nCoV"[Title/Abstract] OR  
 787 "COVID19"[Title/Abstract] OR "COVID2019"[Title/Abstract] 382,642  
 788 4 #2 AND #3 83,020  
 789 3 (((("Epidemics"[Mesh:NoExp]) OR "Pandemics"[Mesh:NoExp]) OR "Disease  
 790 Outbreaks"[Mesh:NoExp] 226,548  
 791 2 (((("Coronaviridae"[Mesh:NoExp]) OR "Coronavirus"[Mesh]) OR "Betacoronavirus"[Mesh:NoExp])  
 792 OR "Coronavirus Infections"[Mesh:NoExp] 185,366  
 793 1 ("COVID-19"[Mesh]) OR "Severe acute respiratory syndrome-related coronavirus"[Mesh]  
 794 258,558  
 795

796 **The PubMed strategy was updated on 1.2.24 (20 records) and 1.3.24 (17 records).**

797  
 798 *COVID facet based on terms from:*

799  
 800 World Health Organization (26 May 2021) WHO COVID-19 Database Search Strategy. Systematic search of  
 801 the COVID-19 literature performed Monday through Friday for the WHO Database. Search strategy as of 26  
 802 May 2021. Searches performed by Tomas Allen, Kavita Kothari, and Martha Knuth. Available from:  
 803 [https://www.who.int/docs/default-source/coronaviruse/who-covid-19-database/who-covid-  
 804 19\\_sources\\_searchstrategy\\_20210526.pdf?sfvrsn=65209cc2\\_5](https://www.who.int/docs/default-source/coronaviruse/who-covid-19-database/who-covid-19_sources_searchstrategy_20210526.pdf?sfvrsn=65209cc2_5)

805  
 806 Canadian Agency for Drugs and Technologies in Health (2.9.21) CADTH COVID-19 Search Strings: COVID-  
 807 19 — EMBASE (Internet). Available from: [https://covid.cadth.ca/literature-searching-tools/cadth-covid-19-  
 808 search-strings/](https://covid.cadth.ca/literature-searching-tools/cadth-covid-19-search-strings/)

809  
 810 NICE (18 December 2020) [accessed 17.8.21] COVID-19 rapid guideline: managing the long-term effects of  
 811 COVID-19 [NG188]. Search history record [PDF]. NICE: London. Available from:  
 812 <https://www.nice.org.uk/guidance/ng188/evidence/search-strategies-pdf-8957634445>  
 813  
 814 *Observational study design filter adapted from:*  
 815 Scottish Intercollegiate Guidelines Network (SIGN). Search filters: observational studies. Medline. Edinburgh:  
 816 SIGN, Last Modified 24/04/17 Available from: <https://www.sign.ac.uk/what-we-do/methodology/search-filters/>  
 817  
 818 *PubMed limit:*  
 819 Duffy S, de Kock S, Misso K, Noake C, Ross J, Stirk L. Supplementary searches of PubMed to improve  
 820 currency of MEDLINE and MEDLINE In-Process searches via Ovid. J Med Libr Assoc. 2016 Oct;104(4):309-  
 821 312. doi: 10.3163/1536-5050.104.4.011. <https://www.ncbi.nlm.nih.gov/pmc/articles/PMC5079494/>  
 822  
 823 **Europe PMC, including medRxiv and bioRxiv preprints (Internet): up to 2024/01/04**  
 824 **Searched 4.1.24**  
 825 <https://europepmc.org/>  
 826

Search terms	Results
(TITLE:"COVID-19" OR TITLE:"coronavirus" OR TITLE:"COVID" OR TITLE:"NCOV" OR TITLE:"SARS-CoV-2") AND (TITLE:"2022" OR TITLE:"2023" OR TITLE:"strain" OR TITLE:"strains" OR TITLE:"variant" OR TITLE:"variants" OR TITLE:"mutation" OR TITLE:"mutations" OR TITLE:"omicron" OR TITLE:"omicron") AND (TITLE:"pfizer" OR TITLE:"biontech" OR TITLE:" tozinameran" OR TITLE:" Comirnaty" OR TITLE:" Pfizer- BioNTech" OR TITLE:" BNT-162b2" OR TITLE:" BNT162b2" OR TITLE:"BNT162C2" OR TITLE:"BNT-162C2" OR TITLE:"Abdavomeran" OR TITLE:"Elasomeran" OR TITLE:"moderna" OR TITLE:"spikevax" OR TITLE:"TAK-919" OR TITLE:"TAK919" OR TITLE:"RNA vaccine" OR TITLE:"RNA vaccines" OR TITLE:"mrna vaccine" OR TITLE:"mrna vaccines") AND (TITLE:"cohort" OR TITLE:"observational" OR TITLE:"longitudinal" OR TITLE:"followup" OR TITLE:"follow up" OR TITLE:"epidemiologic" OR TITLE:"epidemiological" OR TITLE:"longterm" OR TITLE:"long term" OR TITLE:"prospective")	<b>10</b>

827  
 828 *The Europe PMC strategy was updated on 1.2.24 (1 record) and 1.3.24 (0 records).*  
 829

830 **Latin American and Caribbean Health Sciences Literature (LILACS) (Internet): 2022-2024/01/04**  
 831 **Searched 4.1.24**

832 <https://search.bvsalud.org/portal/?lang=en>

833  
 834  
 835 Searched Title/Abstract/Subject  
 836 Limited to Observational studies  
 837 Limited to 2022-2024/01/04  
 838 Limited to LILACS only  
 839

840 ((COVID OR NCOV OR coronavirus OR COVID19 OR "SARs-COV-2" OR Omicron OR omicron)) AND  
 841 ((mortality OR death OR deaths OR fatal OR fatality OR fatalities OR survival OR "close attention unit" OR  
 842 "close attention units" OR "intensive care" OR "respiratory care unit" OR "respiratory care units" OR "special  
 843 care unit" OR "special care units" OR "high dependency unit" OR "high dependency units" OR ICU OR ICUs  
 844 OR CCU OR CCUs OR GICU OR GICUs OR HDU OR HDUs OR ITU OR ITUs OR Hospitalized OR  
 845 Hospitalised population OR Hospitalization OR Hospitalisation OR Hospitalizations OR Hospitalisations OR

846 "hospital Admission" OR "hospital Admissions" OR "Critical Care" OR "length of stay" OR "duration of stay"  
847 OR "extended stay" OR "prolonged stay" OR "hospital stay" OR "in-patient stay" OR "inpatient stay" OR "in-  
848 patient stays" OR "inpatient stays" OR risk OR risks OR risky OR danger OR dangers OR dangerous OR  
849 association OR associations OR peril OR jeopardy OR jeopardise OR jeopardize OR threat OR threats OR  
850 chance OR chances OR hazard OR hazards OR hazardous OR gamble OR gambles OR gambling OR  
851 probability OR probabilities OR "at stake" OR endanger OR endangers OR endangered OR endangering OR  
852 associate OR associates OR associating OR association OR likelihood OR likelihoods OR possibility OR  
853 possibilities OR correlation OR correlations OR odds OR morbidity OR comorbidity OR "co-morbidity" OR  
854 morbidities OR comorbidities OR "co-morbidities" OR incidence OR prevalence OR predict OR predicted OR  
855 predictive OR prognosis OR prediction OR predictions OR HR OR RR OR aiRR OR aOR OR "adjusted OR"  
856 OR "disease severity" OR "severity score" OR "severity index" OR "severity of illness" OR "critical illness" OR  
857 "emergency status" OR "urgency status" OR "severe complication" OR "severe complications" ) AND ((pfizer  
858 OR biontech OR tozinameran OR Comirnaty OR "Pfizer-BioNTech" OR "pf07302048" OR "pf-07302048" OR  
859 "BNT-162b2" OR "BNT162b2" OR Pidacmeran OR "BNT162C2" OR "BNT-162C2" OR Abdavomeran OR  
860 "BNT-162B1" OR "BNT162B1" OR "BNT162A1" OR "BNT-162A1" OR "Pfizer-BioNTech" OR "2417899-  
861 77-3" OR Elasomeran OR moderna OR Spikevax OR davesomeran OR imelasomeran OR andusomeran OR  
862 "mRNA 1273" OR "mRNA1273" OR "mRNA-1273.211" OR "mRNA 1273.211" OR Spikevax OR "M-1273"  
863 OR "M1273" OR "CX-024414" OR "CX024414" OR "TAK-919" OR "TAK919" OR "2430046-03-8" OR  
864 "2457298-05-2" OR "RNA vaccine" OR "RNA vaccines" OR "RNA vaccination" OR "RNA shot" OR "RNA  
865 shots" OR "mRNA vaccine" OR "mRNA vaccines" OR "mRNA vaccination" OR "mRNA shot" OR "mRNA  
866 shots" ) AND ((2022 OR 2023 OR 2024 OR strain OR strains OR variant OR variants OR mutations OR  
867 mutation OR omikron OR Omicron OR "B.1.1.529" OR "B11529" OR xbb) )

868  
869 N=3

870  
871 *The LILACS strategy was updated on 1.2.24 (0 records) and 1.3.24 (0 records).*

872  
873 **Cochrane COVID-19 Study Register (www): 2022-2024/01/04**

874 **Searched 4.1.24**

875 <https://covid-19.cochrane.org/>

876  
877 Limited to Observational cohort studies.

878 Limited 2022-2024/01/04

879  
880 (mortality OR death OR deaths OR fatal OR fatality OR fatalities OR survival OR "close attention unit" OR  
881 "close attention units" OR "intensive care" OR "respiratory care unit" OR "respiratory care units" OR "special  
882 care unit" OR "special care units" OR "high dependency unit" OR "high dependency units" OR ICU OR ICUs  
883 OR CCU OR CCUs OR GICU OR GICUs OR HDU OR HDUs OR ITU OR ITUs OR Hospitalised OR  
884 Hospitalised population OR Hospitalization OR Hospitalisation OR Hospitalizations OR Hospitalisations OR  
885 "hospital Admission" OR "hospital Admissions" OR "Critical Care" OR "length of stay" OR "duration of stay"  
886 OR "extended stay" OR "prolonged stay" OR "hospital stay" OR "in-patient stay" OR "inpatient stay" OR "in-  
887 patient stays" OR "inpatient stays" OR risk OR risks OR risky OR danger OR dangers OR dangerous OR  
888 association OR associations OR peril OR jeopardy OR jeopardise OR jeopardize OR threat OR threats OR  
889 chance OR chances OR hazard OR hazards OR hazardous OR gamble OR gambles OR gambling OR  
890 probability OR probabilities OR "at stake" OR endanger OR endangers OR endangered OR endangering OR  
891 associate OR associates OR associating OR association OR likelihood OR likelihoods OR possibility OR  
892 possibilities OR correlation OR correlations OR odds OR morbidity OR comorbidity OR "co-morbidity" OR  
893 morbidities OR comorbidities OR "co-morbidities" OR incidence OR prevalence OR predict OR predicted OR  
894 predictive OR prognosis OR prediction OR predictions OR HR OR RR OR aiRR OR aOR OR "adjusted OR"  
895 OR "disease severity" OR "severity score" OR "severity index" OR "severity of illness" OR "critical illness" OR  
896 "emergency status" OR "urgency status" OR "severe complication" OR "severe complications" ) AND (pfizer  
897 OR biontech OR tozinameran OR Comirnaty OR "Pfizer-BioNTech" OR "pf07302048" OR "pf-07302048" OR  
898 "BNT-162b2" OR "BNT162b2" OR Pidacmeran OR "BNT162C2" OR "BNT-162C2" OR Abdavomeran OR  
899 "BNT-162B1" OR "BNT162B1" OR "BNT162A1" OR "BNT-162A1" OR "Pfizer-BioNTech" OR "2417899-  
900 77-3" OR Elasomeran OR moderna OR Spikevax OR davesomeran OR imelasomeran OR andusomeran OR  
901 "mRNA 1273" OR "mRNA1273" OR "mRNA-1273.211" OR "mRNA 1273.211" OR Spikevax OR "M-1273"  
902 OR "M1273" OR "CX-024414" OR "CX024414" OR "TAK-919" OR "TAK919" OR "2430046-03-8" OR  
903 "2457298-05-2" OR "RNA vaccine" OR "RNA vaccines" OR "RNA vaccination" OR "RNA shot" OR "RNA

904 shots" OR "mRNA vaccine" OR "mRNA vaccines" OR "mRNA vaccination" OR "mRNA shot" OR "mRNA  
905 shots") AND (2022 OR 2023 OR 2024 OR strain OR strains OR variant OR variants OR mutations OR  
906 mutation OR omikron OR Omicron OR "B.1.1.529" OR "B11529" OR xbb) AND (cohort OR cohorts OR  
907 observational OR "follow up" OR followup OR epidemiologic OR epidemiological OR longterm OR "long  
908 term" OR longitudinal OR prospective)

909  
910 **N=(1551 studies) 1792 references**

911  
912 *The Cochrane COVID-19 Study Register strategy was updated on 1.2.24 (1 record) and 1.3.24 (0 records).*

913  
914 **WHO COVID-19 (Internet): 2022-2024/01/03**

915 **Searched 3.1.24**

916 <https://search.bvsalud.org/global-literature-on-novel-coronavirus-2019-ncov/?lang=en>

917  
918 Limited to Observational and cohort studies.

919 Limited 2022-2023.

920  
921 (ti:(mortality OR death OR deaths OR fatal OR fatality OR fatalities OR survival OR "close attention unit" OR  
922 "close attention units" OR "intensive care" OR "respiratory care unit" OR "respiratory care units" OR "special  
923 care unit" OR "special care units" OR "high dependency unit" OR "high dependency units" OR ICU OR ICUs  
924 OR CCU OR CCUs OR GICU OR GICUs OR HDU OR HDUs OR ITU OR ITUs OR Hospitalized OR  
925 Hospitalised population OR Hospitalization OR Hospitalisation OR Hospitalizations OR Hospitalisations OR  
926 "hospital Admission" OR "hospital Admissions" OR "Critical Care" OR "length of stay" OR "duration of stay"  
927 OR "extended stay" OR "prolonged stay" OR "hospital stay" OR "in-patient stay" OR "inpatient stay" OR "in-  
928 patient stays" OR "inpatient stays" OR risk OR risks OR risky OR danger OR dangers OR dangerous OR  
929 association OR associations OR peril OR jeopardy OR jeopardise OR jeopardize OR threat OR threats OR  
930 chance OR chances OR hazard OR hazards OR hazardous OR gamble OR gambles OR gambling OR  
931 probability OR probabilities OR "at stake" OR endanger OR endangers OR endangered OR endangering OR  
932 associate OR associates OR associating OR association OR likelihood OR likelihoods OR possibility OR  
933 possibilities OR correlation OR correlations OR odds OR morbidity OR comorbidity OR "co-morbidity" OR  
934 morbidities OR comorbidities OR "co-morbidities" OR incidence OR prevalence OR predict OR predicted OR  
935 predictive OR prognosis OR prediction OR predictions OR HR OR RR OR aiRR OR aOR OR "adjusted OR"  
936 OR "disease severity" OR "severity score" OR "severity index" OR "severity of illness" OR "critical illness" OR  
937 "emergency status" OR "urgency status" OR "severe complication" OR "severe complications")) AND (pfizer\$  
938 OR biontech OR tozinameran OR Comirnaty OR "Pfizer-BioNTech" OR "pf07302048" OR "pf-07302048" OR  
939 "BNT-162b2" OR "BNT162b2" OR Pidacmeran OR "BNT162C2" OR "BNT-162C2" OR Abdavomeran OR  
940 "BNT-162B1" OR "BNT162B1" OR "BNT162A1" OR "BNT-162A1" OR "Pfizer-BioNTech" OR "2417899-  
941 77-3" OR Elasmomeran OR moderna OR Spikevax OR davesomeran OR imelasomeran OR andusomeran OR  
942 "mRNA 1273" OR "mRNA1273" OR "mRNA-1273.211" OR "mRNA 1273.211" OR Spikevax OR "M-1273"  
943 OR "M1273" OR "CX-024414" OR "CX024414" OR "TAK-919" OR "TAK919" OR "2430046-03-8" OR  
944 "2457298-05-2" OR "RNA vaccine" OR "RNA vaccines" OR "RNA vaccination" OR "RNA shot" OR "RNA  
945 shots" OR "mRNA vaccine" OR "mRNA vaccines" OR "mRNA vaccination" OR "mRNA shot" OR "mRNA  
946 shots")

947  
948 **N=477**

949  
950 \* WHO COVID-19 database ceased on June 2023, therefore update searches were not necessary.

## 951 **1.2. Study Selection**

952 Identified studies were first assessed at title and abstract level using the Rayyan tool<sup>1</sup> by 2 independent  
953 reviewers to determine whether they met the inclusion criteria. Disagreements were resolved by discussion until  
954 a consensus was reached. Full text screening was performed on all studies that met the inclusion criteria at title  
955 and abstract level.



956 **1.3. Data Extraction**

957 One reviewer extracted data on study and patient characteristics, and outcomes of interest into a predefined  
958 table. A second reviewer verified the accuracy of extraction. For studies that also coincided with other SARS-  
959 CoV-2 variants, only data relating to the Omicron variant were extracted, as defined by the study.

960 **1.4. Quality Assessment**

961 Studies were assessed as having high, moderate, or low risk of bias using the Newcastle-Ottawa scale for cohort  
962 and case-control studies<sup>2</sup> and the Joanna Briggs Institute checklist for cross-sectional studies.<sup>3</sup> A single reviewer  
963 conducted the assessments, and a second reviewer verified the results. Discrepancies were resolved by  
964 discussion.

965 **1.5. Data Analysis**

966 **1.5.1 Statistical Analysis**

967 Odds ratios (ORs), hazard ratios (HRs), and rate ratios are considered equal estimates and were therefore  
968 combined.<sup>4</sup> Weights were calculated using the inverse variance method (weight= 1/variance). Random-effects  
969 DerSimonian and Laird models<sup>5</sup> were fitted to calculate pooled relative risk (RR) and 95% confidence interval  
970 for all outcomes. Population analyses that included fewer than 5 subgroups were not conducted due to the  
971 challenges associated with combining few studies. ‘Subgroup’ refers to the types of  
972 immunocompromising/immunosuppressive conditions of interest. It often contains any additional information  
973 that differentiates the condition from another one included in the same meta-analysis by the same study (e.g.  
974 ‘men who take immunosuppressants’ and ‘women who take immunosuppressants’). ‘Subgroup’ is often used  
975 interchangeably with ‘study’. However, considering that some studies included multiple subgroups that are  
976 included in the same meta-analysis, for clarity they are referred to in this report as ‘subgroups’.

977 Heterogeneity was measured using Cochran’s Q statistic, with statistical significance set as  $P < .05$ , and  
978 quantified by the  $I^2$  test. The  $I^2$  statistic as defined by the Cochrane Handbook for Systematic Reviews of  
979 Interventions<sup>6</sup> was used for thresholds for interpretation: 0% to 40% might not be important; 40% to 60% may  
980 represent moderate heterogeneity; 60% to 90% may represent substantial heterogeneity; 90% to 100% may  
981 represent considerable heterogeneity. Publication bias was assessed using funnel plots and the Egger’s test.<sup>7</sup>

982 **1.5.2 Additional Subgroup Analysis**

983 Studies that exclusively included children were excluded from all analyses. For analyses for which those studies  
984 were eligible, an additional sensitivity analysis called ‘Including children’ was conducted. Additional subgroup  
985 analyses included the ‘> 50 years’ population included only participants older than 50 years, the ‘COVID-19-  
986 related outcomes only’ population included only outcomes that were explicitly caused by COVID-19. Patients  
987 with renal disease were further analyzed for the ‘Death’ outcome in 2 population subgroups: ‘chronic kidney  
988 disease (CKD) stage 3’ (included CKD stage 3 subgroups) and ‘advanced renal disease’ (included CKD stage 5,  
989 renal failure, end-stage kidney disease, and renal replacement therapy subgroups).

## 990 2. Supplemental eResults

### 991 2.1. Studies With Insufficient Numbers for Meta-Analysis

992 Due to insufficient number of subgroups, meta-analyses were not conducted for the following outcomes and  
993 immunocompromising/immunosuppressing (IC/IS) conditions: intensive care unit (ICU) admission for people  
994 with autoimmune diseases (n = 2) and transplant (n = 2); death (n = 1), hospitalization (n = 3), ICU (n = 0), or  
995 combined outcomes (n = 2) for people with HIV; and hospitalization for people with liver disease (n = 2) (**Table**  
996 **3**). Studies and subgroups identified for each of these conditions are narratively described in **Section 2.6** of the  
997 Supplement.

### 998 2.2. Risk of Death – Other Subgroup Analyses

999 Subgroup analyses differed from the main analysis and showed that people with either autoimmune or liver  
1000 diseases did not have a significantly higher risk of death when they were hospitalized before the start of the  
1001 study (**Supplemental eTable 5**).

### 1002 2.3. Risk of ICU – Sensitivity and Subgroup Analyses

1003 Statistical significance was lost in the group of people with cancer in the least adjusted analysis ( $P = .0647$ )  
1004 (**Supplemental eTable 8**). The ‘Leave-1-out’ sensitivity analyses assessed the effect of removing individual  
1005 studies on pooled estimates. Removing the Starkey 2023 study<sup>8</sup> from the cancer group analysis and the Russell  
1006 2023<sup>9</sup> or Mayer 2023<sup>10</sup> studies from the renal disease group resulted in a loss of significance for each analysis;  
1007 these studies were not outliers but had more weight than other studies.

1008 Subgroup analyses showed that people with cancer who were hospitalized before the study did not have a  
1009 significant risk of ICU admission (**Supplemental eTable 9**). Additionally, people with renal disease did not  
1010 have a significant risk of ICU admission in any of the analyzed subgroups, which is likely due to the low  
1011 number of studies included for each subgroup.

1012

### 1013 2.4. Risk of Any Combination of Outcomes (Death, Hospitalization, or ICU Admission)

1014 For all assessed IC/IS conditions (autoimmune diseases, cancer, IC/IS, liver disease, renal diseases, or  
1015 transplant), patients with the condition had a significantly increased risk of the ‘Combined’ outcome ( $P < .05$ ;  
1016 **Figure 2D**) in comparison with patients without the condition. Statistical heterogeneity was substantial for  
1017 studies of patients with autoimmune diseases, and considerable for all other groups (**Figure 2D**). Publication  
1018 bias was detected in studies of patients with cancer or liver disease, and could not be assessed for studies of  
1019 patients with autoimmune diseases or transplant recipients (**Supplemental eTable 10**).

1020 All sensitivity analyses results had the same degree of significance as the main analysis for the risk of  
1021 hospitalization outcome (**Supplemental eTable 10**), indicating the robustness of the main analysis results.  
1022 Subgroup analyses demonstrated that patients with autoimmune diseases or cancer did not have a significant risk  
1023 of combined outcomes if they were hospitalized prior to the study (**Supplemental eTable 11**). Additionally,  
1024 patients with liver disease did not have a higher risk of combined outcomes for COVID-19-related only  
1025 outcomes or if they were not hospitalized before the study.

1026 **2.5. Supplemental eTables**1027 **2.5.1. Supplemental eTable 1. Inclusion and Exclusion Criteria for Studies**1028 **Included in This Analysis**

Characteristic	Inclusion criteria	Exclusion criteria
Population	<ul style="list-style-type: none"> <li>▪ Immunocompromised/immunosuppressed:               <ul style="list-style-type: none"> <li>▫ Immunocompromised/immunosuppressed groups</li> <li>▫ Solid organ transplant (current or historic)</li> <li>▫ Stem cells transplant (current or historic)</li> <li>▫ Bone marrow transplant (current or historic)</li> <li>▫ Any malignancy (current or historic)</li> <li>▫ Autoimmune conditions</li> <li>▫ Any liver diseases</li> <li>▫ Chronic kidney disease</li> <li>▫ Advanced or untreated HIV</li> <li>▫ End-stage kidney disease</li> </ul> </li> </ul>	<ul style="list-style-type: none"> <li>▪ All patients with conditions of interest to prevent synergizing effects</li> <li>▪ High risk patient groups, i.e. patients who are eligible to take antivirals to prevent severe COVID-19</li> <li>▪ Highly vulnerable populations, such as the elderly in nursing homes</li> </ul>
Comparators	<ul style="list-style-type: none"> <li>▪ Non-immunocompromised/non-immunosuppressed people</li> <li>▪ General population</li> </ul>	<ul style="list-style-type: none"> <li>▪ Non-comparative studies</li> </ul>
Outcomes	<ul style="list-style-type: none"> <li>▪ Risk of:               <ul style="list-style-type: none"> <li>▫ Hospitalization</li> <li>▫ ICU admission</li> <li>▫ Death</li> <li>▫ Combined: other potential COVID-19 severity outcomes, where severity is measured by any of the outcomes outlined above</li> </ul> </li> </ul> <p>Outcomes that were not explicit 'Hospitalization' or 'ICU', such as mechanical ventilation, were also included in this review as part of 'ICU' or 'Hospitalization' outcomes, depending on the definitions</p>	<ul style="list-style-type: none"> <li>▪ Studies that do not report at least 1 relevant outcome of interest</li> </ul>
Outcome measures	<ul style="list-style-type: none"> <li>▪ Risk ratio</li> <li>▪ Rate ratio</li> <li>▪ Hazard ratio</li> <li>▪ Odds ratio</li> <li>▪ Incidence rate ratios</li> </ul>	-



Study design	<ul style="list-style-type: none"> <li>Observational (cohort, case-control, cross-sectional)</li> </ul>	<ul style="list-style-type: none"> <li>Interventional studies, such as randomized/non-randomized controlled trials</li> </ul>
Language	<ul style="list-style-type: none"> <li>Studies with full text published in English will be included. All potentially relevant publications without English language full text will be listed</li> </ul>	<ul style="list-style-type: none"> <li>Studies without a full text published in English</li> </ul>
Timeframe	<ul style="list-style-type: none"> <li>Majority of cases contracted the Omicron variant, as defined by study authors. When the study period was not described as predominantly Omicron, the cut-off date of December 2021, when the WHO declared Omicron as a new variant of concern,<sup>11</sup> was chosen</li> </ul>	<ul style="list-style-type: none"> <li>Studies not reporting data on the Omicron variant</li> </ul>
Publication date	<ul style="list-style-type: none"> <li>Studies published after 1 Jan 2022</li> </ul>	<ul style="list-style-type: none"> <li>Studies published prior to 1 Jan 2022</li> </ul>
Publication type	<ul style="list-style-type: none"> <li>Full-text articles</li> </ul>	<ul style="list-style-type: none"> <li>Conference abstracts</li> <li>Letters</li> <li>Case reports</li> <li>Editorials</li> </ul>
Countries	<ul style="list-style-type: none"> <li>Any</li> </ul>	-

1029

1030

ICU, intensive care unit; WHO, World Health Organization.

1031 **2.5.2 Supplemental eTable 2. Omicron Period in the Included Studies**

Study/month	2021		2022												2023												
	11	12	1	2	3	4	5	6	7	8	9	10	11	12	1	2	3	4	5	6	7	8	9	10	11	12	
Agrawal 2022		█	█	█																							
AlBahrani 2022		█	█	█																							
Arbel 2023											█	█	█	█	█	█											
Arbel 2022			█	█	█																						
Bahreman 2023			█	█	█																						
Bao 2022						█	█																				
Bedston 2024											█	█	█	█													
Benites-Godínez 2023																			█	█	█	█					
Beppu 2024			█	█	█	█	█	█	█	█	█	█	█	█	█	█	█	█									
Beraud 2023		█	█	█	█																						
Bournia 2023			█	█	█	█	█	█	█	█																	
Briciu 2023			█	█	█	█	█																				
Brosh-Nissimov 2023			█	█	█	█	█	█																			
Chen 2023														█	█												
Chen 2024			█	█	█	█	█	█	█	█	█																
Choi 2023					█	█	█	█	█																		
de Prost 2022		█	█	█	█	█	█																				
de Prost 2023			█	█	█	█	█	█	█	█	█	█	█	█													
Drummond 2023			█	█	█	█	█	█	█	█	█	█	█	█													
Elamin 2024																											
Ellis 2023		█	█																								

Risk of severe COVID-19 outcomes: Immunocompromised SLR and MA (Supplemental Materials)

Study/month	Year 2021		Year 2022												Year 2023												
	11	12	1	2	3	4	5	6	7	8	9	10	11	12	1	2	3	4	5	6	7	8	9	10	11	12	
Evans 2023			█	█	█	█	█	█	█	█	█	█	█	█													
Favia 2023																											
Flacco 2023			█	█	█	█	█	█	█	█	█	█	█	█													
Gazit 2022			█	█	█	█	█	█	█	█	█	█	█	█													
Griggs 2024		█	█	█	█	█	█	█	█	█	█	█	█	█	█	█	█	█	█	█							
Guo 2023					█	█	█	█	█																		
Helmy 2023 <sup>a</sup>																											
Hippisley-Cox 2023		█	█	█	█																						
Jamaati 2023							█	█																			
Kang 2023			█	█	█	█																					
Karageorgou 2023			█	█	█	█	█	█	█																		
Kim 2023	█	█	█	█	█	█	█																				
Klein 2023											█	█	█	█	█	█	█										
Konermann 2023			█	█	█	█	█	█	█	█	█	█	█	█													
Lee 2024			█	█	█	█	█	█	█	█	█	█	█	█	█	█	█										
Li 2024						█	█	█	█																		
Li 2023		█	█																								
Liu 2023		█	█																								
Lu 2022						█	█	█	█																		
Mayer 2023		█	█	█	█	█	█	█	█	█	█	█	█	█													
Mendoza-Cano 2023																		█	█	█	█	█	█	█	█	█	█
Mizrahi Reuveni 2023	█	█	█																								
Morris 2023		█	█	█	█	█	█	█	█	█	█	█	█	█													
Nab 2023		█	█	█	█	█	█	█	█	█	█	█	█	█													

Risk of severe COVID-19 outcomes: Immunocompromised SLR and MA (Supplemental Materials)

Study/month	2021		2022												2023												
	11	12	1	2	3	4	5	6	7	8	9	10	11	12	1	2	3	4	5	6	7	8	9	10	11	12	
Nevejan 2022																											
O'Leary 2023																											
Overvad 2022																											
Parajuli 2023																											
Parra-Bracamonte 2023																											
Patton 2023																											
Puyat 2023																											
Radhakrishnan 2023																											
Rasmussen 2023																											
Risk 2022																											
Russell 2023																											
Shakor 2023																											
Shi 2023																											
Simmons 2023																											
Skarbinski 2022																											
Starkey 2023																											
Svensson 2023																											
Tsujimoto 2023																											
Vo 2022																											
Wang 2023																											
Ward 2024																											
Xin 2024																											
Xing 2023																											
Yang 2023																											

Risk of severe COVID-19 outcomes: Immunocompromised SLR and MA (Supplemental Materials)

Year	2021		2022												2023												
	11	12	1	2	3	4	5	6	7	8	9	10	11	12	1	2	3	4	5	6	7	8	9	10	11	12	
Zhang 2022																											
Zhao 2023																											
Zhu 2023																											

<sup>a</sup>Helmy 2023 did not explicitly mention the Omicron variant and study period; however, it was included based on the following sentence: "This prospective observational study was conducted in a university hospital after the institutional research ethics board approval (N-24-2022)". Green indicates the Omicron study period of the studies included in the analyses; Orange indicates the Omicron study period of the studies excluded from the analyses.

1032  
1033  
1034

1035 **2.5.3. Supplemental eTable 3. Risk of Bias of the Included Studies Using NOS**  
 1036 **and JBI Tools**

Study	Low	Medium	High
Agrawal 2022 <sup>12</sup>	●		
AlBahrani 2022 <sup>13</sup>	●		
Arbel 2022 <sup>14</sup>	●		
Arbel 2023 <sup>15</sup>	●		
Bahremand 2023 <sup>16</sup>	●		
Bao 2022 <sup>17a</sup>	●		
Bedston 2024 <sup>18</sup>	●		
Benites-Godínez 2023 <sup>19</sup>	●		
Beppu 2024 <sup>20</sup>	●		
Beraud 2023 <sup>21</sup>	●		
Bournia 2023 <sup>22</sup>	●		
Briciu 2023 <sup>23</sup>	●		
Brosh-Nissimov 2023 <sup>24</sup>	●		
Chen 2023 <sup>25a</sup>	●		
Chen 2024 <sup>26</sup>	●		
Choi 2023 <sup>27</sup>	●		
de Prost 2022 <sup>28</sup>	●		
de Prost 2023 <sup>29</sup>	●		
Drummond 2023 <sup>30</sup>	●		
Elamin 2024 <sup>31</sup>	●		
Ellis 2023 <sup>32</sup>	●		
Evans 2023 <sup>33</sup>	●		
Favia 2023 <sup>34</sup>	●		
Flacco 2023 <sup>35</sup>	●		
Gazit 2022 <sup>36</sup>		●	
Griggs 2024 <sup>37</sup>		●	
Guo 2023 <sup>38</sup>	●		
Helmy 2023 <sup>39</sup>		●	
Hippisley-Cox 2023 <sup>40</sup>		●	
Jamaati 2023 <sup>41</sup>		●	
Kang 2023 <sup>42</sup>	●		
Karageorgou 2023 <sup>43</sup>	●		
Kim 2023 <sup>44</sup>	●		

Study	Low	Medium	High
Klein 2023 <sup>45</sup>	●		
Konermann 2023 <sup>46</sup>	●		
Lee 2024 <sup>47</sup>	●		
Li 2023 <sup>48a</sup>	●		
Li 2024 <sup>49</sup>		●	
Liu 2023 <sup>50</sup>	●		
Lu 2022 <sup>51a</sup>	●		
Mayer 2023 <sup>10</sup>		●	
Mendoza-Cano 2023 <sup>52</sup>	●		
Mizrahi Reuveni 2023 <sup>53</sup>	●		
Morris 2023 <sup>54b</sup>	●		
Nab 2023 <sup>55</sup>	●		
Nevejan 2022 <sup>56</sup>	●		
O'Leary 2023 <sup>57</sup>	●		
Overvad 2022 <sup>58</sup>		●	
Parajuli 2023 <sup>59</sup>	●		
Parra-Bracamonte 2023 <sup>60</sup>	●		
Patton 2023 <sup>61</sup>		●	
Puyat 2023 <sup>62</sup>	●		
Radhakrishnan 2023 <sup>63</sup>		●	
Rasmussen 2023 <sup>64</sup>	●		
Risk 2022 <sup>65</sup>	●		
Russell 2023 <sup>9</sup>		●	
Shakor 2023 <sup>66a,b</sup>			●
Shi 2023 <sup>67</sup>	●		
Simmons 2023 <sup>68</sup>	●		
Skarbinski 2022 <sup>69</sup>	●		
Starkey 2023 <sup>8</sup>		●	
Svensson 2023 <sup>70</sup>	●		
Tsujimoto 2023 <sup>71</sup>	●		
Vo 2022 <sup>72</sup>	●		
Wang 2023 <sup>73</sup>	●		
Ward 2024 <sup>74</sup>	●		
Xin 2024 <sup>75</sup>	●		
Xing 2023 <sup>76b</sup>	●		
Yang 2023 <sup>77</sup>	●		

Study	Low	Medium	High
Zhang 2022 <sup>78</sup>	●		
Zhao 2023 <sup>79</sup>	●		
Zhu 2023 <sup>80</sup>	●		

1037 Abbreviations: JBI, Joanna Briggs Institute; NOS, Newcastle-Ottawa scale.

1038 <sup>a</sup>Risk of bias was assessed using the JBI critical appraisal checklist for analytical cross-sectional studies. Green indicates low  
 1039 risk of bias, amber – medium, and red – high.

1040 <sup>b</sup>Shakor 2023 was assessed using the JBI critical appraisal checklist for analytical cross-sectional studies. For 2 of the  
 1041 questions the study was unclear (3. Was the exposure measured in a valid and reliable way?; 4. Were objective, standard  
 1042 criteria used for measurement of the condition?). For 1 question the answer was no (5. Were confounding factors identified?).  
 1043 For 1 question, the answer was not applicable (6. Were strategies to deal with confounding factors stated [adjustment during  
 1044 analysis]?).



1045 **2.5.4. Supplemental eTable 4. Main and Sensitivity Analyses Results of the ‘Death’ Outcome**

	Main analysis (RR [95% CI], <i>P</i> value, <i>I</i> <sup>2</sup> )	Statistical evidence of publication bias (yes/no)	Least adjusted (RR [95% C]), <i>P</i> value, <i>I</i> <sup>2</sup> )	Only adjusted (RR [95% C]), <i>P</i> value, <i>I</i> <sup>2</sup> )	Excluding studies for population overlap (RR [95% CI], <i>P</i> value, <i>I</i> <sup>2</sup> )	Leave-1-out (yes/no for significant difference of removing a subgroup)
<b>Autoimmune diseases</b>	1.33 (1.20, 1.48), <i>P</i> < .05, <i>I</i> <sup>2</sup> = 65%	No	1.39 (1.29, 1.49), <i>P</i> < .001, <i>I</i> <sup>2</sup> = 31.92%	1.34 (1.20, 1.48), <i>P</i> < .001, <i>I</i> <sup>2</sup> = 68.15%	1.33 (1.21, 1.48), <i>P</i> < .001, <i>I</i> <sup>2</sup> = 64.61%	No
<b>Cancer</b>	2.40 (1.22, 2.74), <i>P</i> < .05, <i>I</i> <sup>2</sup> = 97%	No	2.49 (1.90, 3.26), <i>P</i> < .001, <i>I</i> <sup>2</sup> = 98.94%	2.53 (2.21, 2.90), <i>P</i> < .001, <i>I</i> <sup>2</sup> = 96.94%	2.40 (2.11, 2.74), <i>P</i> < .001, <i>I</i> <sup>2</sup> = 96.81%	No
<b>Immunocompromised/ immunosuppressed</b>	2.17 (1.77, 2.66), <i>P</i> < .05, <i>I</i> <sup>2</sup> = 97%	No	2.25 (1.83, 2.75), <i>P</i> < .001, <i>I</i> <sup>2</sup> = 97.02%	2.20 (1.77, 2.72), <i>P</i> < .001, <i>I</i> <sup>2</sup> = 97.16%	2.18 (1.77, 2.67), <i>P</i> < .001, <i>I</i> <sup>2</sup> = 96.9%	No
<b>Liver disease</b>	1.79 (1.31, 2.43), <i>P</i> < .05, <i>I</i> <sup>2</sup> = 96%	No	1.99 (1.52, 2.59), <i>P</i> < .001, <i>I</i> <sup>2</sup> = 94.63%	1.85 (1.35, 2.53), <i>P</i> < .001, <i>I</i> <sup>2</sup> = 96.47%	1.79 (1.31, 2.43), <i>P</i> < .001, <i>I</i> <sup>2</sup> = 95.83%	No
<b>Renal disease</b>	2.15 (1.88, 2.46), <i>P</i> < .05, <i>I</i> <sup>2</sup> = 98%	Yes	2.21 (1.93, 2.53), <i>P</i> < .001, <i>I</i> <sup>2</sup> = 98.28%	2.24 (1.94, 2.58), <i>P</i> < .001, <i>I</i> <sup>2</sup> = 98.41%	2.26 (1.96, 2.60), <i>P</i> < .001, <i>I</i> <sup>2</sup> = 98.29%	No
<b>Transplant</b>	6.78 (4.41, 10.43), <i>P</i> < .05, <i>I</i> <sup>2</sup> = 80%	Yes	6.78 (4.41, 10.43), <i>P</i> < .001, <i>I</i> <sup>2</sup> = 79.86%	8.50 (5.70, 12.67), <i>P</i> < .001, <i>I</i> <sup>2</sup> = 74.81%	6.78 (4.41, 10.43), <i>P</i> < .001, <i>I</i> <sup>2</sup> = 79.86%	No

1046  
1047

Abbreviations: CI, confidence interval; RR, risk ratio.  
All estimates rounded to 2 decimal places. Green indicates that the significance of the result is the same as of the ‘Main’ analysis.

1048 **2.5.5. Supplemental eTable 5. Main and Population Subgroup Analyses Results of the ‘Death’ Outcome for All Population**

1049 **Subgroups of Interest**

	Main analysis (RR [95% CI], P value, I <sup>2</sup> )	General population (RR [95% CI], P value, I <sup>2</sup> )	Hospitalized population (RR [95% CI], P value, I <sup>2</sup> )	COVID-19 related only (RR [95% CI], P value, I <sup>2</sup> )	Subgroup of a population older than 50 years (RR [95% CI], P value, I <sup>2</sup> )	CKD stage 3 (RR [95% CI], P value, I <sup>2</sup> )	Advanced renal disease (RR [95% CI], P value, I <sup>2</sup> )
<b>Autoimmune diseases</b>	1.33 (1.20, 1.48), P < .05, I <sup>2</sup> = 65%	1.33 (1.20, 1.48), P < .001, I <sup>2</sup> = 70.93%	1.84 (0.72, 4.69), P = .202, I <sup>2</sup> = 0%	1.38 (1.27, 1.51), P < .001, I <sup>2</sup> = 50.04%	1.46 (1.24, 1.71), P < .001, I <sup>2</sup> = 0%	NA	NA
<b>Cancer</b>	2.40 (1.22, 2.74), P < .05, I <sup>2</sup> = 97%	2.61 (2.16, 3.16), P < .001, I <sup>2</sup> = 97.48%	2.07 (1.55, 2.77), P < .001, I <sup>2</sup> = 91.12%	2.78 (2.20, 3.51), P < .001, I <sup>2</sup> = 97.6%	2.81 (2.39, 3.31), P < .001, I <sup>2</sup> = 21.09%	NA	NA
<b>Immunocompromised/ immunosuppressed</b>	2.17 (1.77, 2.66), P < .05, I <sup>2</sup> = 97%	2.303 (1.77, 3.00), P < .001, I <sup>2</sup> = 96.89%	1.82 (1.38, 2.41), P < .001, I <sup>2</sup> = 60.62%	2.61 (2.09, 3.25), P < .001, I <sup>2</sup> = 93.66%	NA	NA	NA
<b>Liver disease</b>	1.79 (1.31, 2.43), P < .05, I <sup>2</sup> = 96%	2.767 (2.19, 3.50), P < .001, I <sup>2</sup> = 70.63%	1.20 (0.94, 1.53), P = .142, I <sup>2</sup> = 85.03%	3.34 (2.95, 3.78), P < .001, I <sup>2</sup> = 0%	2.677 (2.00, 3.59), P < .001, I <sup>2</sup> = 0%	NA	NA
<b>Renal disease</b>	2.15 (1.88, 2.46), P < .05, I <sup>2</sup> = 98%	2.558 (2.09, 3.14), P < .001, I <sup>2</sup> = 98.02%	1.35 (1.18, 1.55), P < .001, I <sup>2</sup> = 93.47%	2.51 (2.00, 3.16), P < .001, I <sup>2</sup> = 98.95%	1.88 (1.23, 2.87), P = .00367, I <sup>2</sup> = 68.48%	1.38 (1.17, 1.64), P < .001, I <sup>2</sup> = 94%	3.57 (2.06, 6.19), P < .001, I <sup>2</sup> = 98%
<b>Transplant</b>	6.78 (4.41, 10.43), P < .05, I <sup>2</sup> = 80%	8.499 (5.70, 12.67), P < .001, I <sup>2</sup> = 74.81%	2.30 (1.08, 4.88), P = .03, I <sup>2</sup> = 0%	8.50 (5.70, 12.67), P < .001, I <sup>2</sup> = 74.81%	NA	NA	NA

Abbreviations: CI, confidence interval; CKD, chronic kidney disease; NA, not applicable; RR, risk ratio.

All estimates rounded to 2 decimal places. Green indicates that the significance of the result is the same as of the ‘Main’ analysis; Orange indicates that the significance of the result is different from the main analysis.

1050  
1051  
1052

1053 **2.5.6. Supplemental eTable 6. Main and Sensitivity Analyses Results of the ‘Hospitalization’ Outcome**

	Main analysis (RR [95% CI], <i>P</i> value, <i>I</i> <sup>2</sup> )	Statistical evidence of publication bias (yes/no)	Least adjusted (RR [95% CI], <i>P</i> value, <i>I</i> <sup>2</sup> )	Only adjusted (RR [95% CI], <i>P</i> value, <i>I</i> <sup>2</sup> )	Excluding studies for population overlap (RR [95% CI], <i>P</i> value, <i>I</i> <sup>2</sup> )	Leave-1-out (yes/no for significant difference of removing a subgroup)
<b>Autoimmune diseases</b>	1.76 (1.42, 2.16), <i>P</i> < .05, <i>I</i> <sup>2</sup> = 97%	NA	1.79 (1.44, 2.22), <i>P</i> < .001, <i>I</i> <sup>2</sup> = 97.54%	1.76 (1.42, 2.17), <i>P</i> < .001, <i>I</i> <sup>2</sup> = 97.36%	1.76 (1.42, 2.17), <i>P</i> < .001, <i>I</i> <sup>2</sup> = 97.36%	No
<b>Cancer</b>	2.18 (1.82, 2.61), <i>P</i> < .05, <i>I</i> <sup>2</sup> = 98%	No	2.30 (1.74, 3.03), <i>P</i> < .001, <i>I</i> <sup>2</sup> = 99.25%	2.18 (1.82, 2.61), <i>P</i> < .001, <i>I</i> <sup>2</sup> = 98.02%	2.18 (1.82, 2.61), <i>P</i> < .001, <i>I</i> <sup>2</sup> = 98.02%	No
<b>Immunocompromised/ immunosuppressed</b>	2.75 (2.11, 3.59), <i>P</i> < .05, <i>I</i> <sup>2</sup> = 98%	No	2.77 (2.14, 3.59), <i>P</i> < .001, <i>I</i> <sup>2</sup> = 97.93%	2.75 (2.11, 3.59), <i>P</i> < .001, <i>I</i> <sup>2</sup> = 98.05%	2.75 (2.11, 3.59), <i>P</i> < .001, <i>I</i> <sup>2</sup> = 98.05%	No
<b>Renal disease</b>	2.13 (1.64, 2.76), <i>P</i> < .05, <i>I</i> <sup>2</sup> = 99%	No	2.14 (1.65, 2.76), <i>P</i> < .001, <i>I</i> <sup>2</sup> = 98.7%	2.13 (1.64, 2.76), <i>P</i> < .001, <i>I</i> <sup>2</sup> = 98.72%	2.13 (1.64, 2.76), <i>P</i> < .001, <i>I</i> <sup>2</sup> = 98.72%	No
<b>Transplant</b>	6.75 (3.41, 13.37), <i>P</i> < .05, <i>I</i> <sup>2</sup> = 98%	NA	6.75 (3.4, 13.37), <i>P</i> < .001, <i>I</i> <sup>2</sup> = 97.96%	5.34 (2.98, 9.56), <i>P</i> < .001, <i>I</i> <sup>2</sup> = 93.81%	6.75 (3.41, 13.37), <i>P</i> < .001, <i>I</i> <sup>2</sup> = 97.96%	No

Abbreviations: CI, confidence interval; NA, not applicable; RR, risk ratio.

All estimates rounded to 2 decimal places. Green indicates that the significance of the result is the same as of the 'Main' analysis.

1054  
1055

1056 **2.5.7. Supplemental eTable 7. Main and Population Subgroup Analyses Results of the ‘Hospitalization’ Outcome for All**

1057 **Subgroups of Interest**

	Main analysis (RR [95% CI], <i>P</i> value, <i>I</i> <sup>2</sup> )	COVID-19 related only (RR [95% CI], <i>P</i> value, <i>I</i> <sup>2</sup> )	Subgroup of a population older than 50 years (RR [95% CI], <i>P</i> value, <i>I</i> <sup>2</sup> )	Including children (RR [95% CI], <i>P</i> value, <i>I</i> <sup>2</sup> )
<b>Autoimmune diseases</b>	1.76 (1.42, 2.16), <i>P</i> < .05, <i>I</i> <sup>2</sup> = 97%	1.81 (1.48, 2.20), <i>P</i> < .001, <i>I</i> <sup>2</sup> = 94.3%	NA	NA
<b>Cancer</b>	2.18 (1.82, 2.61), <i>P</i> < .05, <i>I</i> <sup>2</sup> = 98%	2.52 (1.93, 3.30), <i>P</i> < .001, <i>I</i> <sup>2</sup> = 98.39%	NA	NA
<b>Immunocompromised/ immunosuppressed</b>	2.76 (2.11, 3.59), <i>P</i> < .05, <i>I</i> <sup>2</sup> = 98%	2.88 (2.06, 4.034), <i>P</i> < .001, <i>I</i> <sup>2</sup> = 98.41%	NA	2.92 (2.24, 3.81), <i>P</i> < .001, <i>I</i> <sup>2</sup> = 97.96%
<b>Renal disease</b>	2.13 (1.64, 2.76), <i>P</i> < .05, <i>I</i> <sup>2</sup> = 99%	2.25 (1.57, 3.21), <i>P</i> < .001, <i>I</i> <sup>2</sup> = 98.96%	1.79 (1.14, 2.82), <i>P</i> = .0114, <i>I</i> <sup>2</sup> = 87.14%	NA
<b>Transplant</b>	6.75 (3.41, 13.37), <i>P</i> < .05, <i>I</i> <sup>2</sup> = 98%	6.75 (3.41, 13.37), <i>P</i> < .001, <i>I</i> <sup>2</sup> = 97.96%	NA	NA

1058 Abbreviations: CI, confidence interval; NA, not applicable; RR, risk ratio.  
 1059 All estimates rounded to 2 decimal places. Green indicates that the significance of the result is the same as of the ‘Main’ analysis.

1060 **2.5.8. Supplemental eTable 8. Main and Sensitivity Analyses Results of the 'ICU Admission' Outcome**

	Main analysis (RR [95% CI], P value, I <sup>2</sup> )	Statistical evidence of publication bias (yes/no)	Least adjusted (RR [95% CI], P value, I <sup>2</sup> )	Only adjusted (RR [95% CI], P value, I <sup>2</sup> )	Excluding studies for population overlap (RR [95% CI], P value, I <sup>2</sup> )	Leave-1-out (yes/no for significant difference of removing a subgroup)
<b>Cancer</b>	2.09 (1.13, 3.89), P < .05, I <sup>2</sup> = 98%	NA	2.00 (0.96, 4.16), P = .0647, I <sup>2</sup> = 98.93%	2.66 (1.34, 5.26), P = .00498, I <sup>2</sup> = 98.72%	2.10 (1.13, 3.89), P = .019, I <sup>2</sup> = 98.3%	Yes
<b>Immunocompromised/ immunosuppressed</b>	3.38 (2.37, 4.83), P < .05, I <sup>2</sup> = 79%	NA	3.43 (2.41, 4.88), P < .001, I <sup>2</sup> = 78.32%	4.42 (3.92, 4.99), P < .001, I <sup>2</sup> = 0%	3.38 (2.37, 4.83), P < .001, I <sup>2</sup> = 78.72%	No
<b>Liver disease</b>	1.27 (1.07, 1.52), P < .05, I <sup>2</sup> = 68%	NA	1.41 (1.14, 1.75), P = .0017, I <sup>2</sup> = 86.79%	1.28 (1.07, 1.52), P = .00741, I <sup>2</sup> = 68.18%	1.28 (1.07, 1.52), P = .00741, I <sup>2</sup> = 68.18%	No
<b>Renal disease</b>	1.96 (1.19, 3.22), P < .05, I <sup>2</sup> =	No	2.25 (1.33, 3.79), P = .00236, I <sup>2</sup> = 96.8%	2.89 (1.56, 5.34), P < .001, I <sup>2</sup> = 97.74%	1.96 (1.19, 3.22), P = .00802, I <sup>2</sup> = 96.05%	Yes

1061  
1062  
1063

Abbreviations: CI, confidence interval; NA, not applicable; RR, risk ratio.

All estimates rounded to 2 decimal places. Green indicates that the significance of the result is the same as of the 'Main' analysis; Orange indicates that the significance of the result is different from the main analysis.

1064 **2.5.9. Supplemental eTable 9. Main and Population Subgroup Analyses Results of the 'ICU' Outcome for All Population**

1065 **Subgroups of Interest**

	Main analysis (RR [95% CI], P value, I <sup>2</sup> )	General population (RR [95% CI], P value, I <sup>2</sup> )	Hospitalized population (RR [95% CI], P value, I <sup>2</sup> )	COVID-19 related only (RR [95% CI], P value, I <sup>2</sup> )	Subgroup of a population older than 50 years (RR [95% CI], P value, I <sup>2</sup> )
<b>Cancer</b>	2.09 (1.13, 3.89), P < .05, I <sup>2</sup> = 98%	3.37 (1.10, 10.37), P = .0337, I <sup>2</sup> = 98.36%	1.59 (0.83, 3.06), P = .163, I <sup>2</sup> = 85.56%	3.85 (1.48, 10.05), P = .00581, I <sup>2</sup> = 97.6%	NA
<b>Immunocompromised/ immunosuppressed</b>	3.38 (2.37, 4.83), P < .05, I <sup>2</sup> = 79%	4.49 (3.97, 5.08), P < .001, I <sup>2</sup> = 0%	2.39 (1.05, 5.46), P = .0379, I <sup>2</sup> = 71.07%	4.42 (3.91, 4.98), P < .001, I <sup>2</sup> = 0%	NA
<b>Liver disease</b>	1.27 (1.07, 1.52), P < .05, I <sup>2</sup> = 68%	NA	1.28 (1.07, 1.52), P = .00741, I <sup>2</sup> = 68.18%	NA	NA
<b>Renal disease</b>	1.96 (1.19, 3.22), P < .05, I <sup>2</sup> = 96%	3.00 (0.45, 20.11), P = .259, I <sup>2</sup> = 98.61%	1.53 (0.89, 2.62), P = .122, I <sup>2</sup> = 81.33%	3.20 (0.92, 11.07), P = .067, I <sup>2</sup> = 91.86%	NA

1066  
1067  
1068

Abbreviations: CI, confidence interval; NA, not applicable; RR, risk ratio.

All estimates rounded to 2 decimal places. Green indicates that the significance of the result is the same as of the 'Main' analysis; Orange indicates that the significance of the result is different from the main analysis.

1069 **2.5.10. Supplemental eTable 10. Main and Sensitivity Analyses Results of the ‘Combined’ Outcome**

	Main analysis (RR [95% CI], <i>P</i> value, <i>I</i> <sup>2</sup> )	Statistical evidence of publication bias (yes/no)	Least adjusted (RR [95% CI], <i>P</i> value, <i>I</i> <sup>2</sup> )	Only adjusted (RR [95% CI], <i>P</i> value, <i>I</i> <sup>2</sup> )	Excluding studies for population overlap (RR [95% CI], <i>P</i> value, <i>I</i> <sup>2</sup> )	Leave-1-out (yes/no for significant difference of removing a subgroup)
<b>Autoimmune diseases</b>	2.21 (1.61, 3.04), <i>P</i> < .05, <i>I</i> <sup>2</sup> = 89%	NA	2.21 (1.61, 3.04), <i>P</i> < .001, <i>I</i> <sup>2</sup> = 88.61%	2.22 (1.60, 3.08), <i>P</i> < .001, <i>I</i> <sup>2</sup> = 93.95%	2.21 (1.61, 3.04), <i>P</i> < .001, <i>I</i> <sup>2</sup> = 88.61%	No
<b>Cancer</b>	1.78 (1.45, 2.19), <i>P</i> < .05, <i>I</i> <sup>2</sup> = 96%	Yes	1.72 (1.40, 2.11), <i>P</i> < .001, <i>I</i> <sup>2</sup> = 95.85%	1.89 (1.52, 2.34), <i>P</i> < .001, <i>I</i> <sup>2</sup> = 96.35%	1.83 (1.48, 2.24), <i>P</i> < .001, <i>I</i> <sup>2</sup> = 96.02%	No
<b>Immunocompromised/ immunosuppressed</b>	2.04 (1.42, 2.94), <i>P</i> < .05, <i>I</i> <sup>2</sup> = 99%	No	2.05 (1.42, 2.96), <i>P</i> < .001, <i>I</i> <sup>2</sup> = 99.25%	1.94 (1.33, 2.83), <i>P</i> < .001, <i>I</i> <sup>2</sup> = 99.29%	2.05 (1.42, 2.94), <i>P</i> < .001, <i>I</i> <sup>2</sup> = 99.25%	No
<b>Liver disease</b>	1.50 (1.12, 2.00), <i>P</i> < .05, <i>I</i> <sup>2</sup> = 97%	No	1.48 (1.10, 1.97), <i>P</i> = .00864, <i>I</i> <sup>2</sup> = 96.64%	1.56 (1.16, 2.11), <i>P</i> = .00364, <i>I</i> <sup>2</sup> = 97.29%	1.50 (1.12, 2.00), <i>P</i> = .00678, <i>I</i> <sup>2</sup> = 96.65%	No
<b>Renal disease</b>	1.86 (1.55, 2.23), <i>P</i> < .005, <i>I</i> <sup>2</sup> = 95%	Yes	1.81 (1.51, 2.16), <i>P</i> < .001, <i>I</i> <sup>2</sup> = 94.67%	1.93 (1.58, 2.36), <i>P</i> < .001, <i>I</i> <sup>2</sup> = 96.13%	1.81 (1.50, 2.17), <i>P</i> < .001, <i>I</i> <sup>2</sup> = 95%	No
<b>Transplant</b>	8.65 (4.01, 18.65), <i>P</i> < .05, <i>I</i> <sup>2</sup> = 97%	NA	8.65 (4.01, 18.65), <i>P</i> < .001, <i>I</i> <sup>2</sup> = 97%	7.90 (3.21, 19.41), <i>P</i> < .001, <i>I</i> <sup>2</sup> = 97.96%	8.65 (4.01, 18.65), <i>P</i> < .001, <i>I</i> <sup>2</sup> = 97.32%	No

Abbreviations: CI, confidence interval; NA, not applicable; RR, risk ratio.

All estimates rounded to 2 decimal places. Green indicates that the significance of the result is the same as of the ‘Main’ analysis; Orange indicates that the significance of the result is different from the main analysis.

1070  
1071  
1072

1073 **2.5.11. Supplemental eTable 11. Main and Population Subgroup Analyses Results of the ‘Combined’ Outcome for All**

1074 **Population Subgroups of Interest**

	Main analysis (RR [95% CI], P value, I <sup>2</sup> )	General population (RR [95% CI], P value, I <sup>2</sup> )	Hospitalized population (RR [95% CI], P value, I <sup>2</sup> )	COVID-19 related only (RR [95% CI], P value, I <sup>2</sup> )	Subgroup of a population older than 50 years (RR [95% CI], P value, I <sup>2</sup> )	Including children (RR [95% CI], P value, I <sup>2</sup> )
<b>Autoimmune diseases</b>	2.21 (1.61, 3.04), P < .05, I <sup>2</sup> = 89%	2.22 (1.60, 3.08), P < .001, I <sup>2</sup> = 93.95%	1.91 (0.29, 12.39), P = .5, I <sup>2</sup> = 50.49%	2.21 (1.61, 3.04), P < .001, I <sup>2</sup> = 88.61%	NA	NA
<b>Cancer</b>	1.78 (1.45, 2.19), P < .05, I <sup>2</sup> = 96%	1.96 (1.58, 2.43), P < .001, I <sup>2</sup> = 96.71%	1.09 (0.51, 2.32), P = .822, I <sup>2</sup> = 75.58%	1.96 (1.59, 2.43), P < .001, I <sup>2</sup> = 96.4%	NA	1.75 (1.43, 2.14), P < .001, I <sup>2</sup> = 95.62%
<b>Immunocompromised/ immunosuppressed</b>	2.04 (1.42, 2.94), P < .05, I <sup>2</sup> = 99%	2.49 (1.65, 3.73), P < .001, I <sup>2</sup> = 98.85%	1.26 (1.18, 1.35), P < .001, I <sup>2</sup> = 38.73%	2.34 (1.55, 3.53), P < .001, I <sup>2</sup> = 98.85%	NA	NA
<b>Liver disease</b>	1.50 (1.12, 2.00), P < .05, I <sup>2</sup> = 97%	1.73 (0.91, 3.29), P = 0.0921, I <sup>2</sup> = 98.26%	1.36 (1.25, 1.48), P < .001, I <sup>2</sup> = 34.98%	1.59 (0.91, 2.79), P = .105, I <sup>2</sup> = 96.63%	NA	NA
<b>Renal disease</b>	1.86 (1.55, 2.23), P < .005, I <sup>2</sup> = 95%	2.39 (1.92, 2.96), P < .001, I <sup>2</sup> = 91.59%	1.20 (1.05, 1.37), P = .00688, I <sup>2</sup> = 75.43%	2.41 (1.96, 2.96), P < .001, I <sup>2</sup> = 89.63%	2.46 (1.46, 4.17), P < .001, I <sup>2</sup> = 42.3%	NA
<b>Transplant</b>	8.65 (4.01, 18.65), P < .05, I <sup>2</sup> = 97%	8.65 (4.01, 18.65), P < .001, I <sup>2</sup> = 97%	NA	8.65 (4.01, 18.65), P < .001, I <sup>2</sup> = 97%	NA	7.74 (3.75, 15.99), P < .001, I <sup>2</sup> = 96.81%

1075  
1076  
1077

Abbreviations: CI, confidence interval; NA, not applicable; RR, risk ratio.

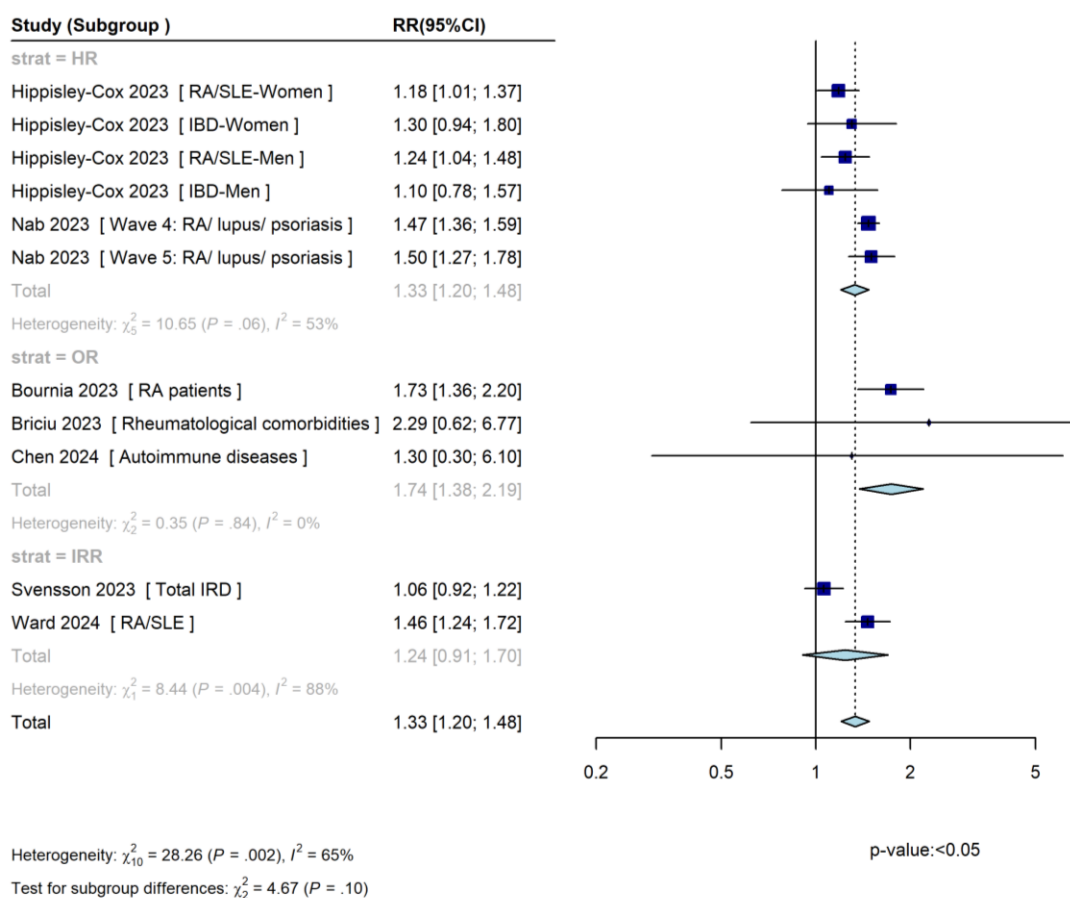
All estimates rounded to 2 decimal places. Green indicates that the significance of the result is the same as of the ‘Main’ analysis; Orange indicates that the significance of the result is different from the ‘Main’ analysis.



1078 **2.6. Meta-analyses for Each IC/IS Condition: Forest Plots of Pooled RR or Narrative Descriptions for**  
 1079 **Each IC/IS Condition and Outcome**

1080 **2.6.1. Autoimmune Disease**

1081 **2.6.1.1. Supplemental eFigure 1. Autoimmune Disease, Death Outcome (No. of Subgroups: 11)**

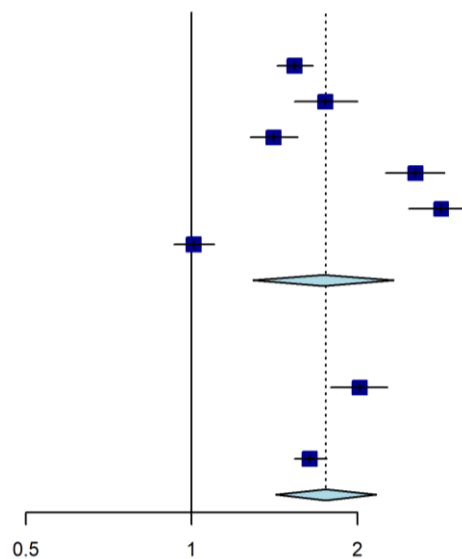


1082

1083 CI, confidence interval; HR, hazard ratio; IBD, inflammatory bowel disease; IRD, inflammatory rheumatic diseases; IRR, incidence rate  
 1084 ratio; OR, odds ratio; RA, rheumatoid arthritis; RR, risk ratio; SLE, systemic lupus erythematosus.

1085 2.6.1.2. Supplemental eFigure 2. Autoimmune Disease, Hospitalization Outcome (No. of Subgroups: 8)

Study (Subgroup)	RR(95%CI)
<b>strat = HR</b>	
Hippisley-Cox 2023 [ RA/SLE-women ]	1.54 [1.43; 1.66]
Hippisley-Cox 2023 [ IBD-Women ]	1.75 [1.54; 2.00]
Hippisley-Cox 2023 [ RA/SLE-Men ]	1.41 [1.28; 1.56]
Hippisley-Cox 2023 [ IBD-Men ]	2.55 [2.25; 2.88]
Russell 2022 [ Multiple sclerosis ]	2.84 [2.48; 3.24]
Russell 2022 [ RA ]	1.01 [0.93; 1.10]
Total	1.74 [1.29; 2.33]
Heterogeneity: $\chi^2_5 = 248.2$ ( $P < .001$ ), $I^2 = 98\%$	
<b>strat = OR</b>	
Bournia 2023 [ RA ]	2.02 [1.79; 2.27]
<b>strat = IRR</b>	
Svensson 2023 [ Total IRD ]	1.64 [1.54; 1.76]
Total	1.75 [1.42; 2.16]



Heterogeneity:  $\chi^2_7 = 265.28$  ( $P < .001$ ),  $I^2 = 97\%$

Test for subgroup differences:  $\chi^2_2 = 8.99$  ( $P = .01$ )

p-value:  $< 0.05$

1086

1087  
1088

CI, confidence interval; HR, hazard ratio; IBD, inflammatory bowel disease; IRD, inflammatory rheumatic diseases; IRR, incidence rate ratio; OR, odds ratio; RA, rheumatoid arthritis; RR, risk ratio; SLE, systemic lupus erythematosus.

1089 2.6.1.3. *Autoimmune Disease, ICU Admission Outcome (No. of Studies: 2)*

1090 The studies reported the following results for the 'ICU' outcome in the 'Autoimmune disease' populations:

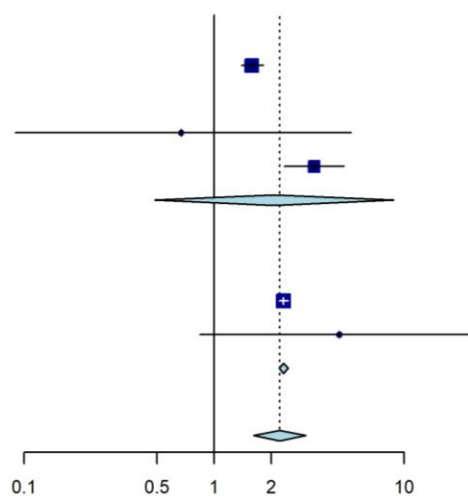
1091 • Briciu 2023<sup>23</sup> (rheumatological comorbidities): OR (95% CI): 1.60 (0.51, 4.17)

1092 • Russell 2023<sup>9</sup> (rheumatoid arthritis): HR (95% CI): 1.15 (0.91, 1.47)

1093 While both studies indicated the same direction of effect – increases in the risk of the 'ICU' outcome, based on  
1094 the CIs, the results were not statistically significant.

1095 2.6.1.4. Supplemental eFigure 3. Autoimmune Disease, Combined Outcome (No. of Subgroups: 5)

Study (Subgroup )	RR(95%CI)
strat = HR	
Bedston 2024 [ RA/SLE ]	1.58 [1.39; 1.81]
strat = OR	
Guo 2023 [ Rheumatic disease ]	0.67 [0.09; 5.25]
Vo 2022 [ MS and transverse myelitis ]	3.36 [2.34; 4.83]
Total	2.07 [0.49; 8.82]
Heterogeneity: $\chi^2_1 = 2.34$ ( $P = .13$ ), $I^2 = 57\%$	
strat = RR	
Agrawal 2022 [ RA/SLE ]	2.32 [2.20; 2.45]
Favia 2023 [ Autoimmune pathologies ]	4.56 [0.84; 24.76]
Total	2.32 [2.20; 2.45]
Heterogeneity: $\chi^2_1 = 0.61$ ( $P = .43$ ), $I^2 = 0\%$	
<b>Total</b>	<b>2.21 [1.61; 3.04]</b>



Heterogeneity:  $\chi^2_4 = 35.11$  ( $P < .001$ ),  $I^2 = 89\%$

Test for subgroup differences:  $\chi^2_2 = 28.00$  ( $P < .001$ )

p-value: <0.05

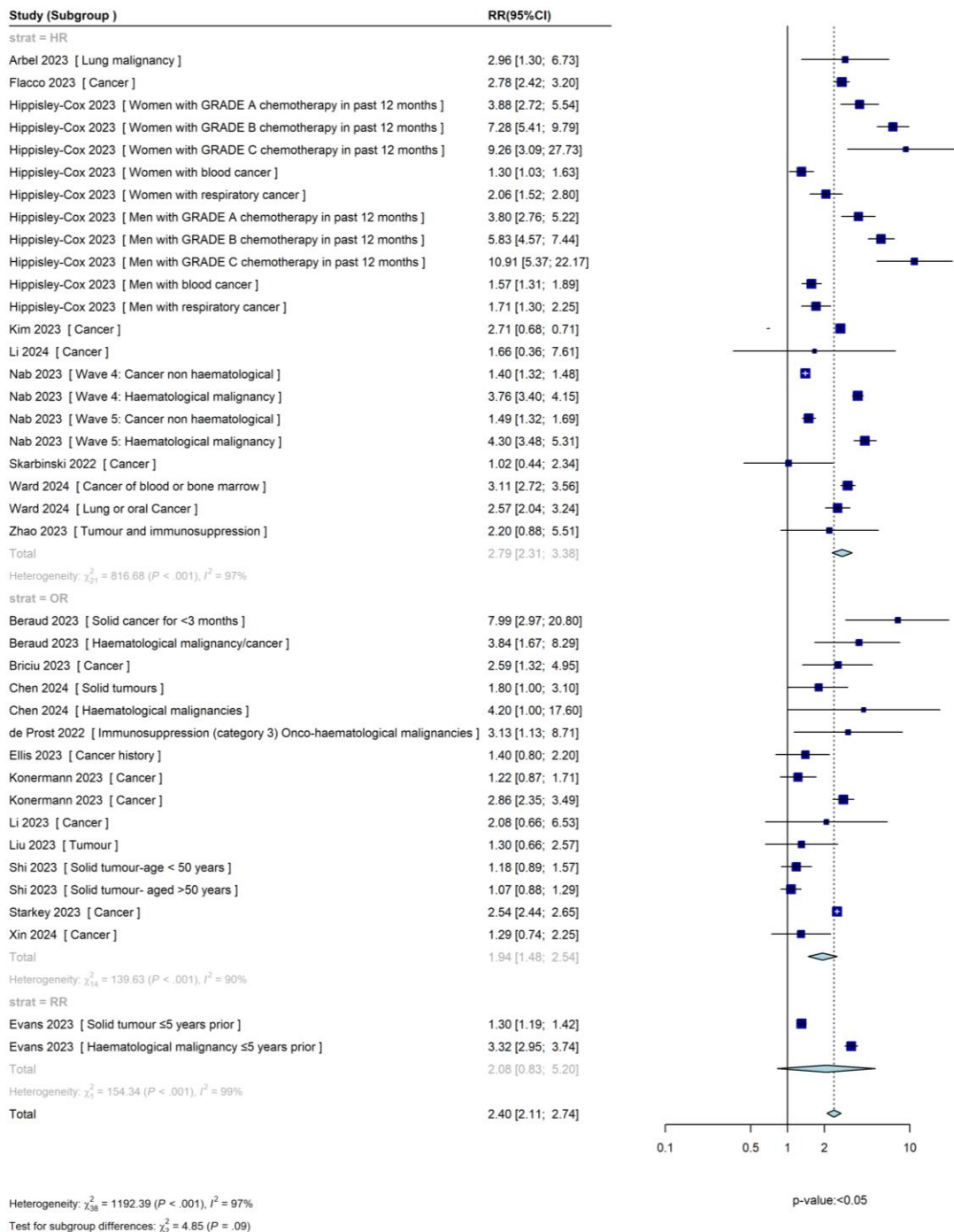
1096

1097  
1098

CI, confidence interval; HR, hazard ratio; MS, multiple sclerosis; OR, odds ratio; RA, rheumatoid arthritis; RR, risk ratio; SLE, systemic lupus erythematosus.

1099 2.6.2. Cancer

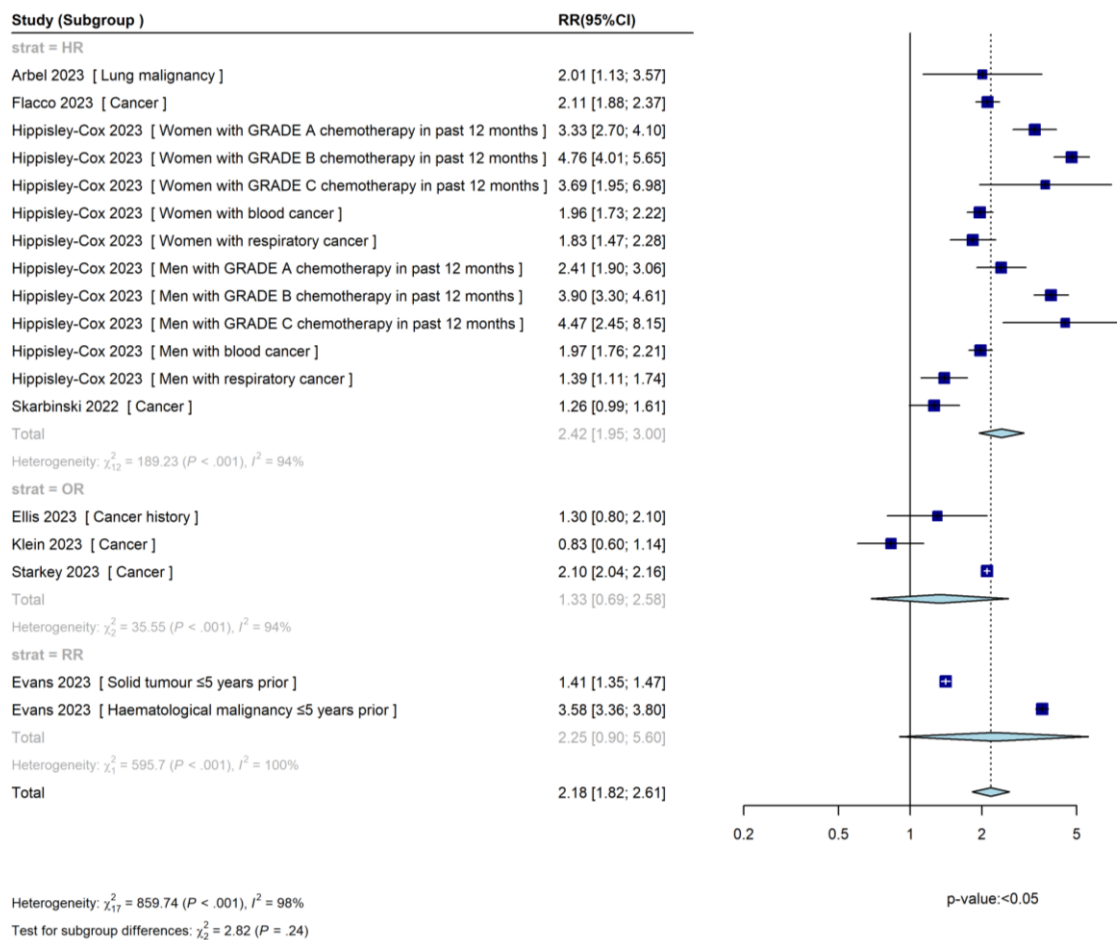
1100 2.6.2.1. Supplemental eFigure 4. Cancer, Death Outcome (No. of Subgroups: 39)



1101

1102 CI, confidence interval; HR, hazard ratio; IRR, incidence rate ratio; OR, odds ratio; RR, risk ratio.

1103 2.6.2.2. Supplemental eFigure 5. Cancer, Hospitalization Outcome (No. of Subgroups: 18)

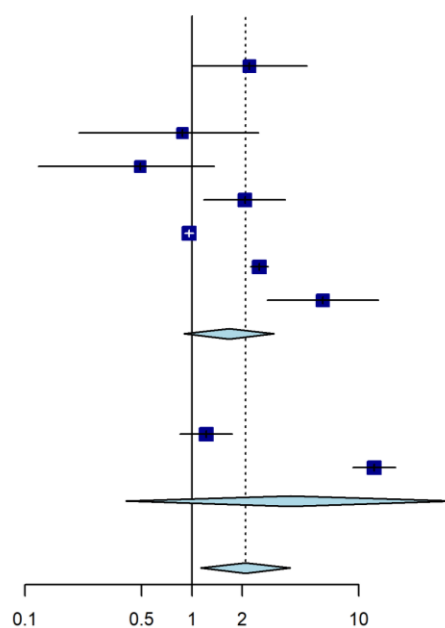


1104

1105 CI, confidence interval; HR, hazard ratio; IRR, incidence rate ratio; OR, odds ratio; RR, risk ratio.

1106 2.6.2.3. Supplemental eFigure 6. Cancer, ICU Admission Outcome (No. of Subgroups: 9)

Study (Subgroup)	RR(95%CI)
<b>strat = HR</b>	
Zhao 2023 [ Tumour and immunosuppression ]	2.21 [1.00; 4.88]
<b>strat = OR</b>	
Beraud 2023 [ Solid cancer for <3 months ]	0.88 [0.21; 2.51]
Beraud 2023 [ Haematological malignancy ]	0.49 [0.12; 1.36]
Briciu 2023 [ Cancer ]	2.08 [1.18; 3.62]
Mayer 2023 [ Solid cancer ]	0.96 [0.91; 1.02]
Starkey 2023 [ Cancer ]	2.53 [2.24; 2.86]
Zhang 2022 [ Malignancy ]	6.08 [2.83; 13.07]
Total	1.67 [0.90; 3.11]
Heterogeneity: $\chi^2_5 = 223.04$ ( $P < .001$ ), $I^2 = 98\%$	
<b>strat = RR</b>	
Evans 2023 [ Solid tumour $\leq 5$ years prior ]	1.22 [0.85; 1.74]
Evans 2023 [ Haematological malignancy $\leq 5$ years prior ]	12.37 [9.23; 16.57]
Total	3.89 [0.40; 37.69]
Heterogeneity: $\chi^2_1 = 96.37$ ( $P < .001$ ), $I^2 = 99\%$	
Total	2.09 [1.13; 3.89]



Heterogeneity:  $\chi^2_8 = 470.08$  ( $P < .001$ ),  $I^2 = 98\%$

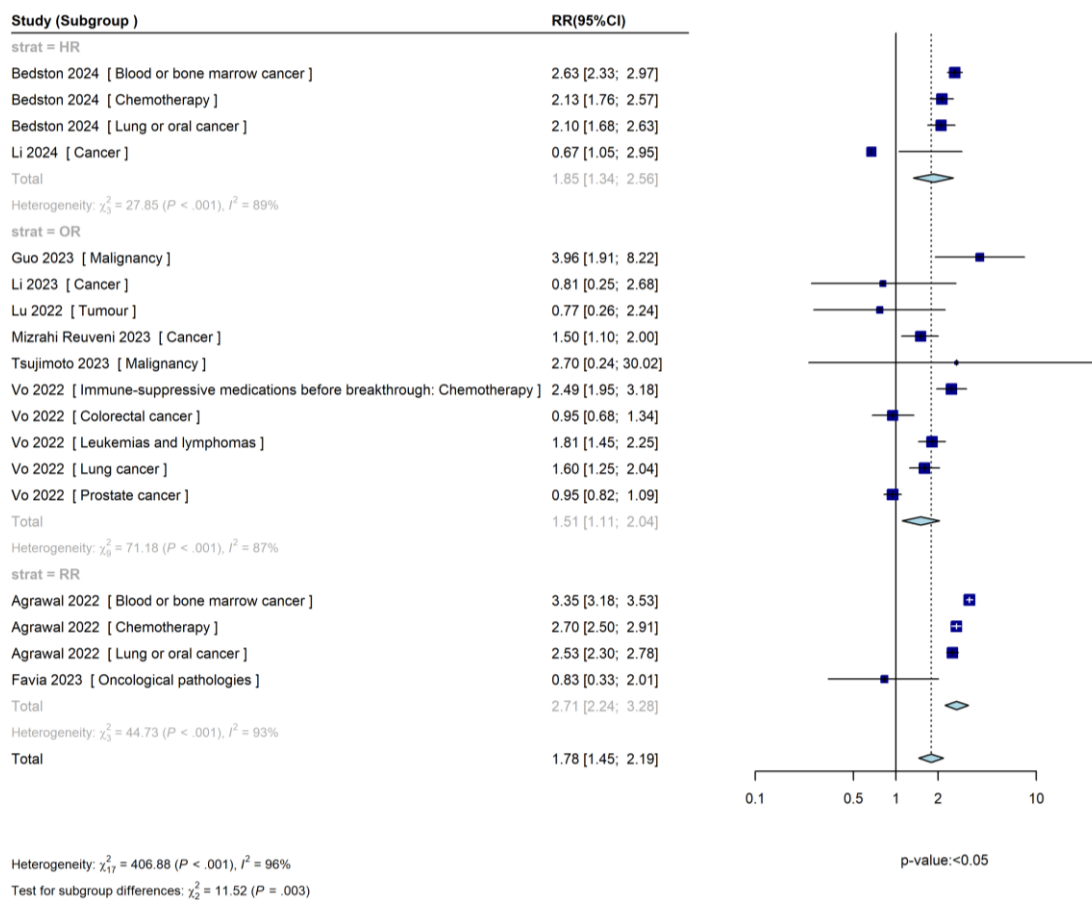
Test for subgroup differences:  $\chi^2_2 = 0.69$  ( $P = .71$ )

p-value: <0.05

1107

1108 CI, confidence interval; HR, hazard ratio; ICU, intensive care unit; IRR, incidence rate ratio; OR, odds ratio; RR, risk ratio.

1109 2.6.2.4. Supplemental eFigure 7. Cancer, Combined Outcome (No. of Subgroups: 18)



1110

1111 CI, confidence interval; HR, hazard ratio; IRR, incidence rate ratio; OR, odds ratio; RR, risk ratio.



1112 **2.6.3. HIV**

1113 *2.6.3.1. HIV, Death Outcome (No. of Studies: 1; No. of Subgroups: 1)*

1114 The study reported the following results for the ‘Death’ outcome in the ‘HIV’ populations:

- 1115
- Evans 2023<sup>33</sup> (advanced or untreated HIV): incidence rate ratio (IRR) (95% CI): 3.12 (1.13, 11.39)

1116 Based on the CI, Evans 2023 showed a statistically significant increase in the risk of the ‘Death’ outcome in the  
1117 ‘HIV’ populations.

1118 *2.6.3.2. HIV, Hospitalization Outcome (No. of Studies: 3; No. of Subgroups: 3)*

1119 The studies reported the following results for the ‘Hospitalization’ outcome in the ‘HIV’ populations:

- 1120
- Evans 2023<sup>33</sup> (advanced or untreated HIV): IRR (95% CI): 2.26 (1.11, 4.58)
  - 1121 • Puyat 2023<sup>62</sup> (all people living with HIV): HR (95% CI): 1.01 (0.78, 1.29)
  - 1122 • Rasmussen 2023<sup>64</sup> (people with HIV at first half of year 2022): IRR (95% CI): 2.0 (1.4, 2.8)

1123 All studies indicated the same direction of effect – increases in the risk of the ‘Hospitalization’ outcome, based  
1124 on the CIs, but the result of Puyat 2023 was not statistically significant.

1125 *2.6.3.3. HIV, ICU Admission Outcome (No. of Studies: 0; No. of Subgroups: 0)*

1126 The analysis of the ‘ICU’ outcome in the ‘HIV’ populations is not feasible as no studies were included in this  
1127 analysis.

1128 *2.6.3.4. HIV, Combined Outcome (No. of Studies: 2; No. of Subgroups: 2)*

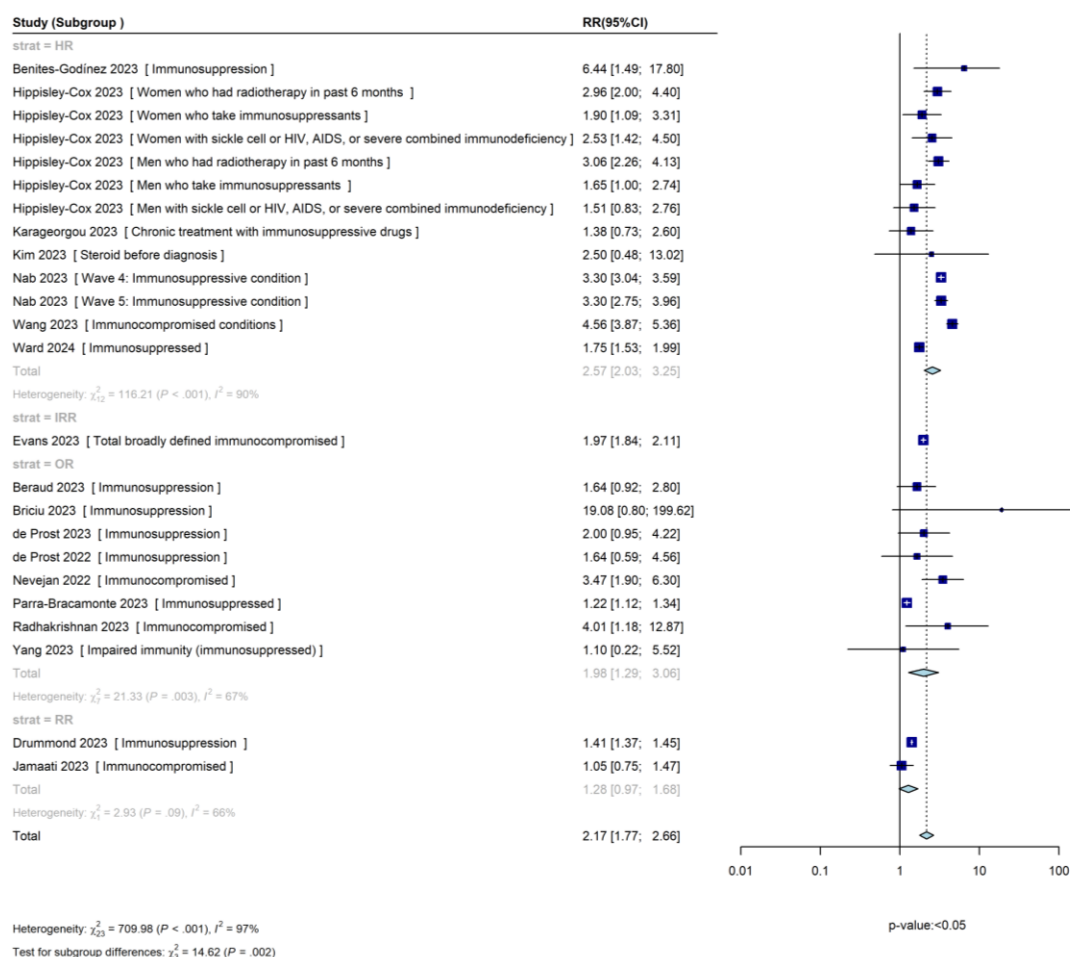
1129 The studies reported the following results for the ‘Combined’ outcome in the ‘HIV’ populations:

- 1130
- Agrawal 2022<sup>12</sup> (HIV): RR (95% CI): 0.61 (0.35, 1.08)
  - 1131 • Vo 2022<sup>72</sup> (HIV/AIDS): OR (95% CI): 1.23 (0.84, 1.80)

1132 The analysis shows conflicting results in terms of the direction of effects of both studies. However, both results  
1133 are not statistically significant.

1134 2.6.4. IC/IS

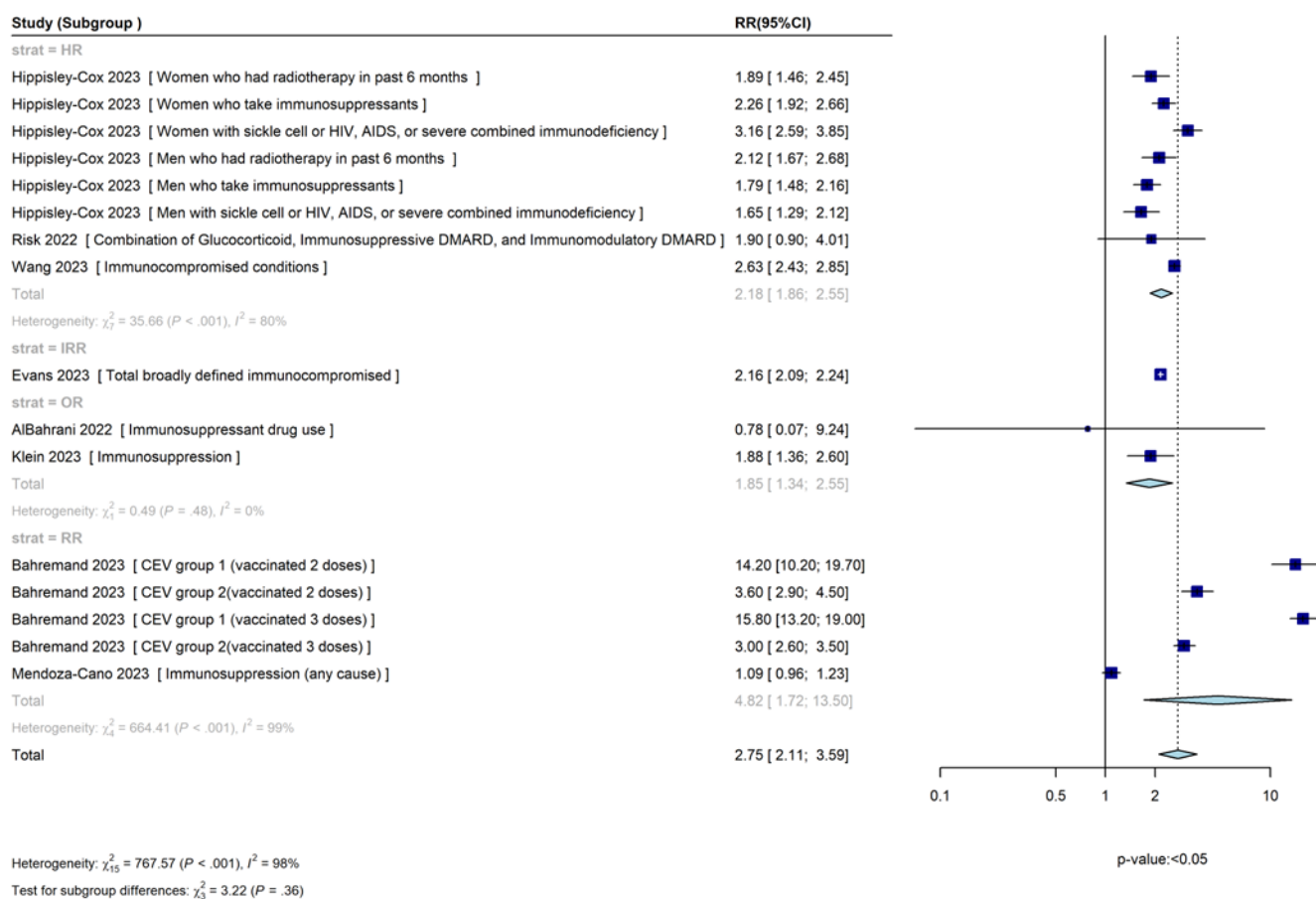
1135 2.6.4.1. Supplemental eFigure 8. IC/IS, Death Outcome (No. of Subgroups: 24)



1136

1137 AIDS, acquired immune deficiency syndrome; CI, confidence interval; HR, hazard ratio; IC/IS, immunocompromising/immunosuppressing;  
 1138 IRR, incidence rate ratio; OR, odds ratio; RR, risk ratio.

1139 2.6.4.2. Supplemental eFigure 9. IC/IS, Hospitalization Outcome (No. of Subgroups: 16)

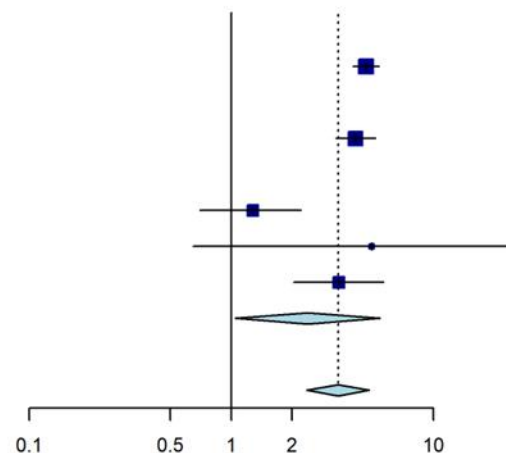


1140

1141 AIDS, acquired immune deficiency syndrome; CEV, clinically extremely vulnerable; CI, confidence interval; DMARD, disease-modifying  
 1142 anti-rheumatic drugs; HR, hazard ratio; IC/IS, immunocompromising/immunosuppressive; IRR, incidence rate ratio; OR, odds ratio; RR,  
 1143 risk ratio.

1144 2.6.4.3. Supplemental eFigure 10. IC/IS, ICU Admission Outcome (No. of Subgroups: 5)

Study (Subgroup)	RR(95%CI)
strat = HR	
Wang 2023 [ Immunocompromised conditions ]	4.65 [4.01; 5.39]
strat = IRR	
Evans 2023 [ Total broadly defined immunocompromised ]	4.13 [3.30; 5.18]
strat = OR	
Beraud 2023 [ Immunosuppression ]	1.28 [0.70; 2.22]
Briciu 2023 [ Immunosuppression ]	4.96 [0.65; 25.12]
Nevejan 2022 [ Immunocompromised ]	3.41 [2.04; 5.68]
Total	2.39 [1.05; 5.46]
Heterogeneity: $\chi^2_2 = 6.91$ ( $P = .03$ ), $I^2 = 71\%$	
Total	3.38 [2.37; 4.83]



Heterogeneity:  $\chi^2_4 = 18.80$  ( $P < .001$ ),  $I^2 = 79\%$   
 Test for subgroup differences:  $\chi^2_2 = 2.93$  ( $P = .23$ )

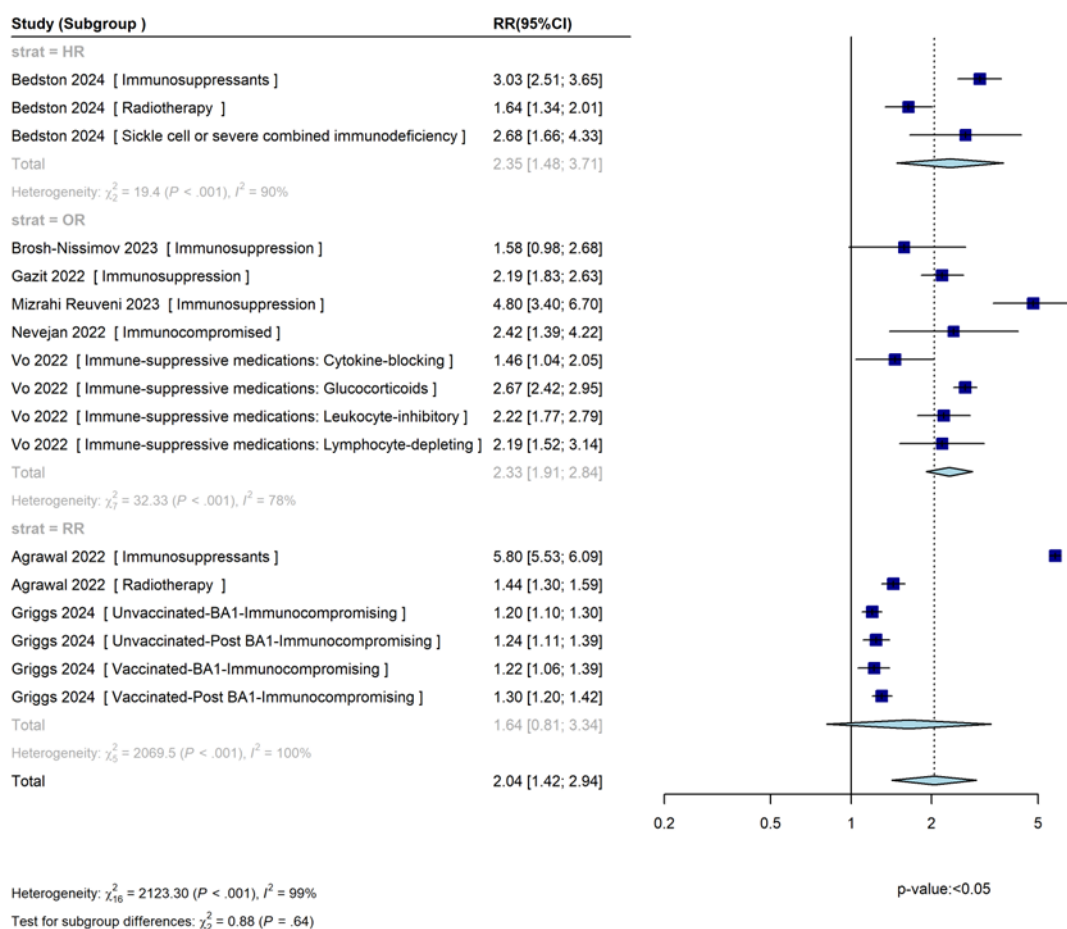
p-value: <0.05

1145

1146  
1147

CI, confidence interval; HR, hazard ratio; IC/IS, immunocompromising/immunosuppressing; ICU, intensive care unit; IRR, incidence rate ratio; OR, odds ratio; RR, risk ratio.

1148 2.6.4.4. Supplemental eFigure 11. IC/IS, Combined Outcome (No. of subgroups: 17)

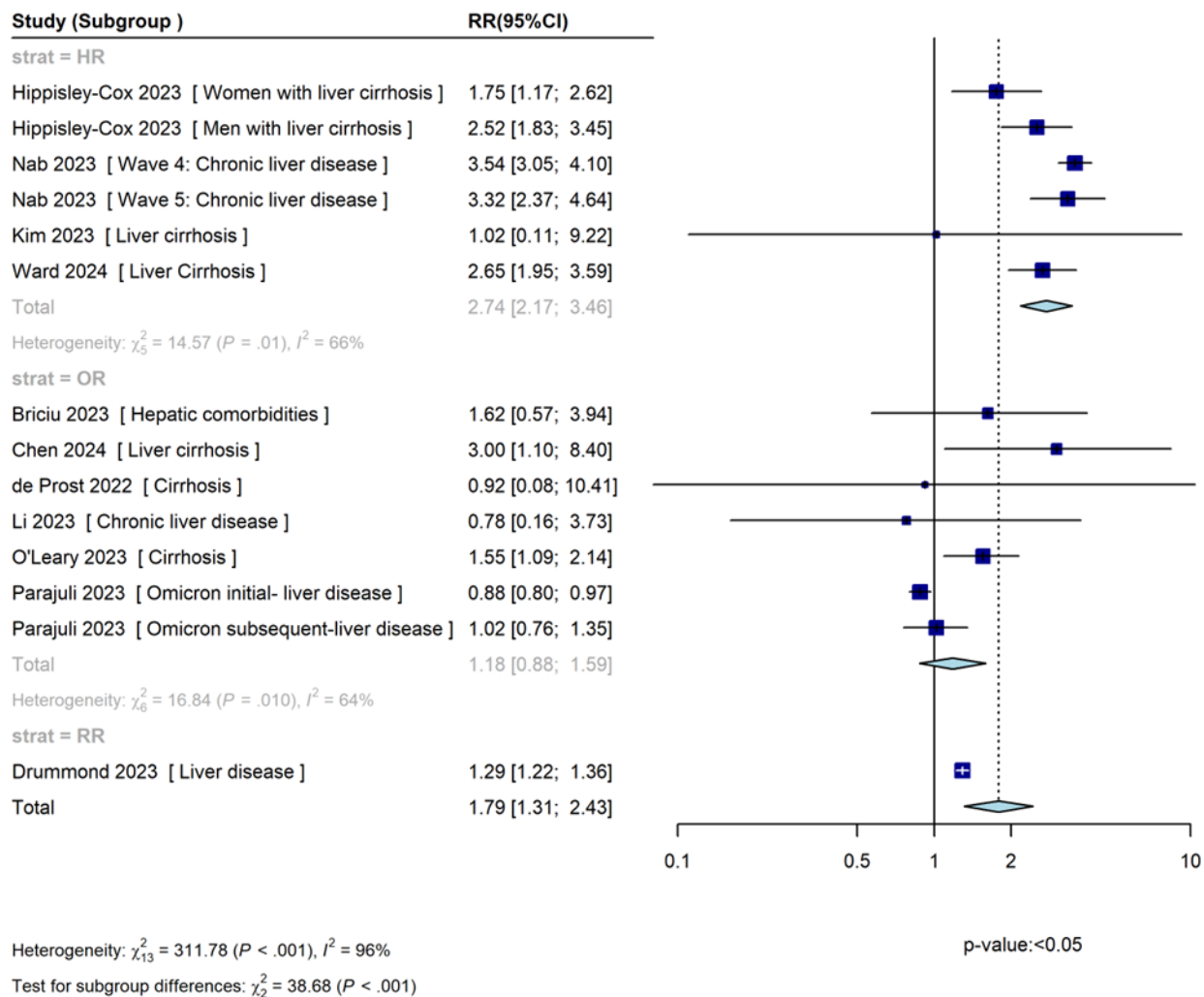


1149

1150 CI, confidence interval; HR, hazard ratio; IC/IS, immunocompromising/immunosuppressing; IRR, incidence rate ratio; OR, odds ratio; RR,  
1151 risk ratio.

1152 2.6.5. Liver Disease

1153 2.6.5.1. Supplemental eFigure 12. Liver Disease, Death Outcome (No. of Subgroups: 14)



1154

1155 CI, confidence interval; HR, hazard ratio; IRR, incidence rate ratio; OR, odds ratio; RR, risk ratio.

1156 2.6.5.2. *Liver Disease, Hospitalization Outcome (No. of Studies: 1; No. of Subgroups: 2)*

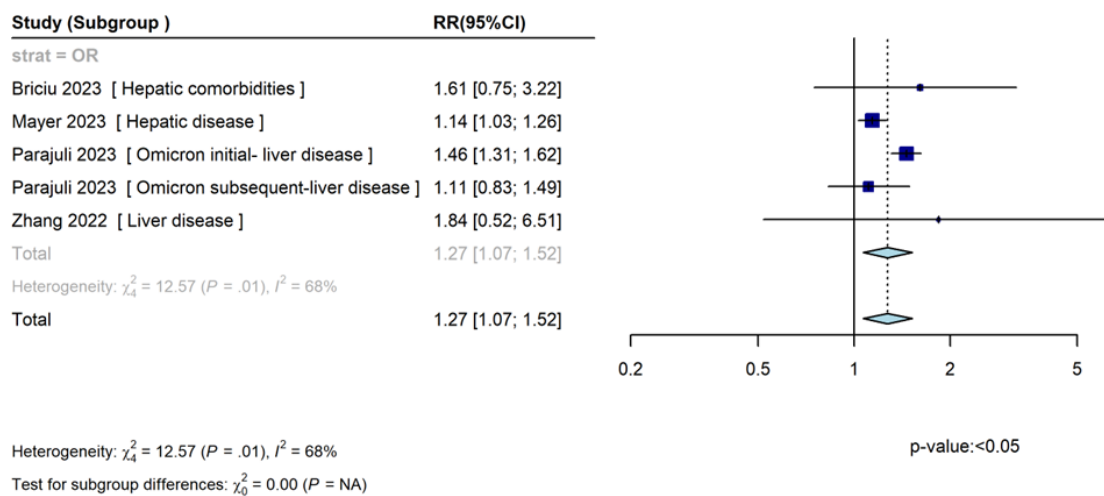
1157 The studies reported the following results for the ‘Hospitalization’ outcome in the ‘Liver disease’ populations:

1158 • Hippisley-Cox 2023<sup>40</sup> (women with liver cirrhosis): HR (95% CI): 2.40 (1.97, 2.92)

1159 • Hippisley-Cox 2023<sup>40</sup> (men with liver cirrhosis): HR (95% CI): 2.18 (1.80, 2.63)

1160 Both liver cirrhosis subgroups in the Hippisley-Cox 2023 study found statistically significant increases in the  
1161 risk of ‘Hospitalization’.

1162 2.6.5.3. Supplemental eFigure 13. Liver Disease, ICU Admission Outcome (No. of Subgroups: 5)



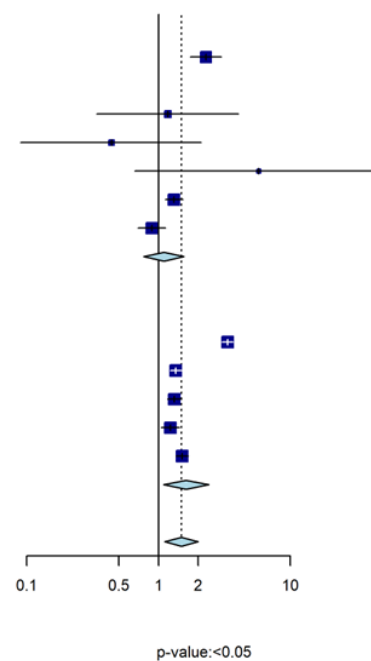
1163

1164 CI, confidence interval; HR, hazard ratio; ICU, intensive care unit; IRR, incidence rate ratio; NA, not applicable; OR, odds ratio; RR, risk  
 1165 ratio.



1166 2.6.5.4. Supplemental eFigure 14. Liver Disease, Combined Outcome (No. of Subgroups: 11)

Study (Subgroup)	RR(95%CI)
strat = HR	
Bedston 2024 [ Liver Cirrhosis ]	2.29 [1.74; 3.00]
strat = OR	
Guo 2023 [ Chronic liver disease ]	1.18 [0.34; 4.04]
Li 2023 [ Chronic liver disease ]	0.44 [0.09; 2.10]
Lu 2022 [ Hepatic disease ]	5.77 [0.66; 50.29]
Vo 2022 [ Liver disease cirrhosis and other liver conditions except viral hepatitis ]	1.31 [1.13; 1.53]
Vo 2022 [ Viral hepatitis ]	0.89 [0.70; 1.13]
Total	1.10 [0.77; 1.56]
Heterogeneity: $\chi^2_4 = 10.72$ ( $P = .03$ ), $I^2 = 63\%$	
strat = RR	
Agrawal 2022 [ Liver Cirrhosis ]	3.34 [3.04; 3.68]
Griggs 2024 [ Unvaccinated-BA1-Hepatic ]	1.35 [1.23; 1.49]
Griggs 2024 [ Unvaccinated-Post BA1-Hepatic ]	1.32 [1.17; 1.50]
Griggs 2024 [ Vaccinated-BA1-Hepatic ]	1.23 [1.05; 1.44]
Griggs 2024 [ Vaccinated-Post BA1-Hepatic ]	1.51 [1.36; 1.68]
Total	1.62 [1.09; 2.40]
Heterogeneity: $\chi^2_4 = 250.36$ ( $P < .001$ ), $I^2 = 98\%$	
Total	1.50 [1.12; 2.00]



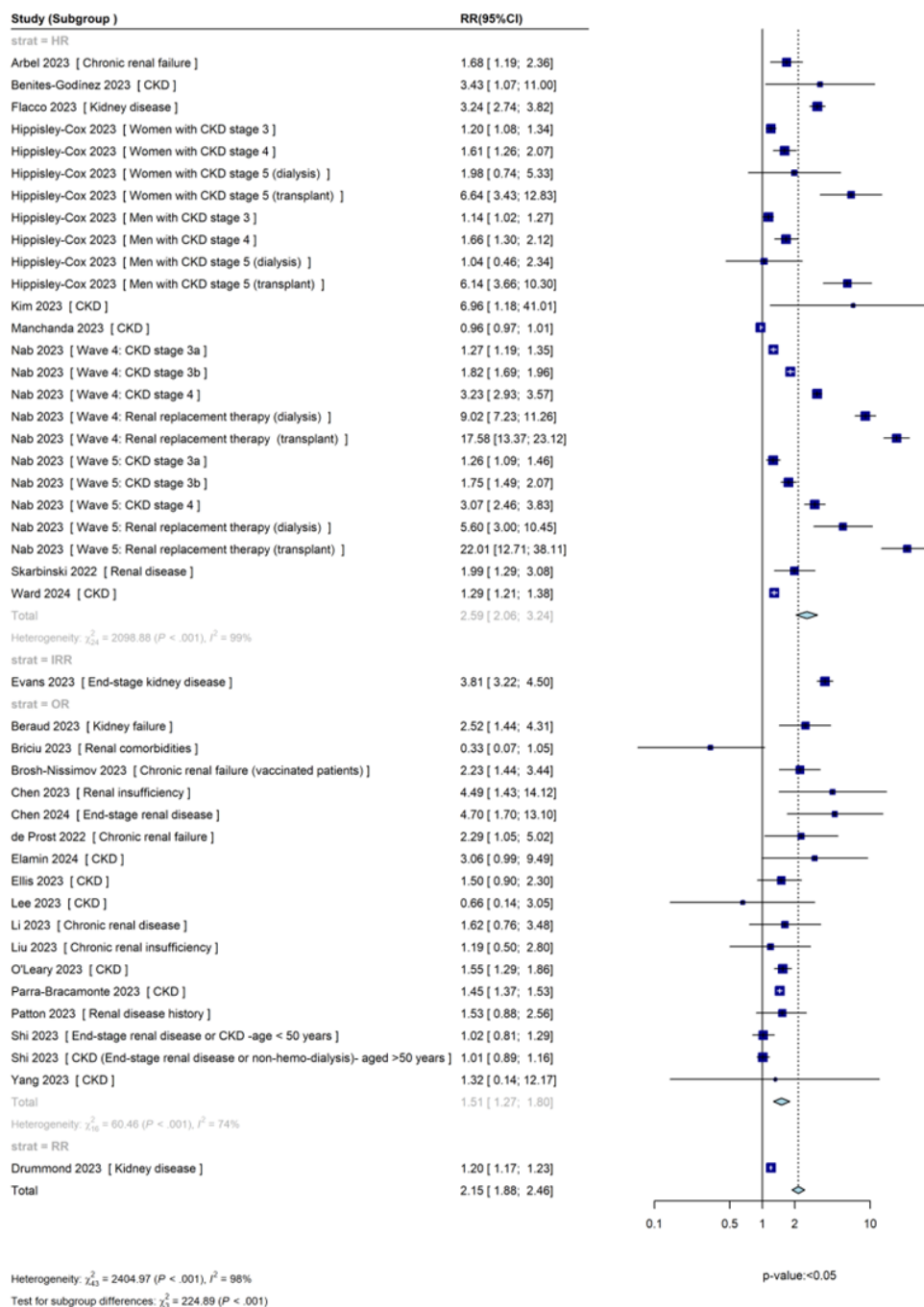
Heterogeneity:  $\chi^2_{10} = 298.69$  ( $P < .001$ ),  $I^2 = 97\%$   
 Test for subgroup differences:  $\chi^2_2 = 10.55$  ( $P = .005$ )

1167

1168 CI, confidence interval; HR, hazard ratio; IRR, incidence rate ratio; OR, odds ratio; RR, risk ratio.

1169 2.6.6. Renal Disease

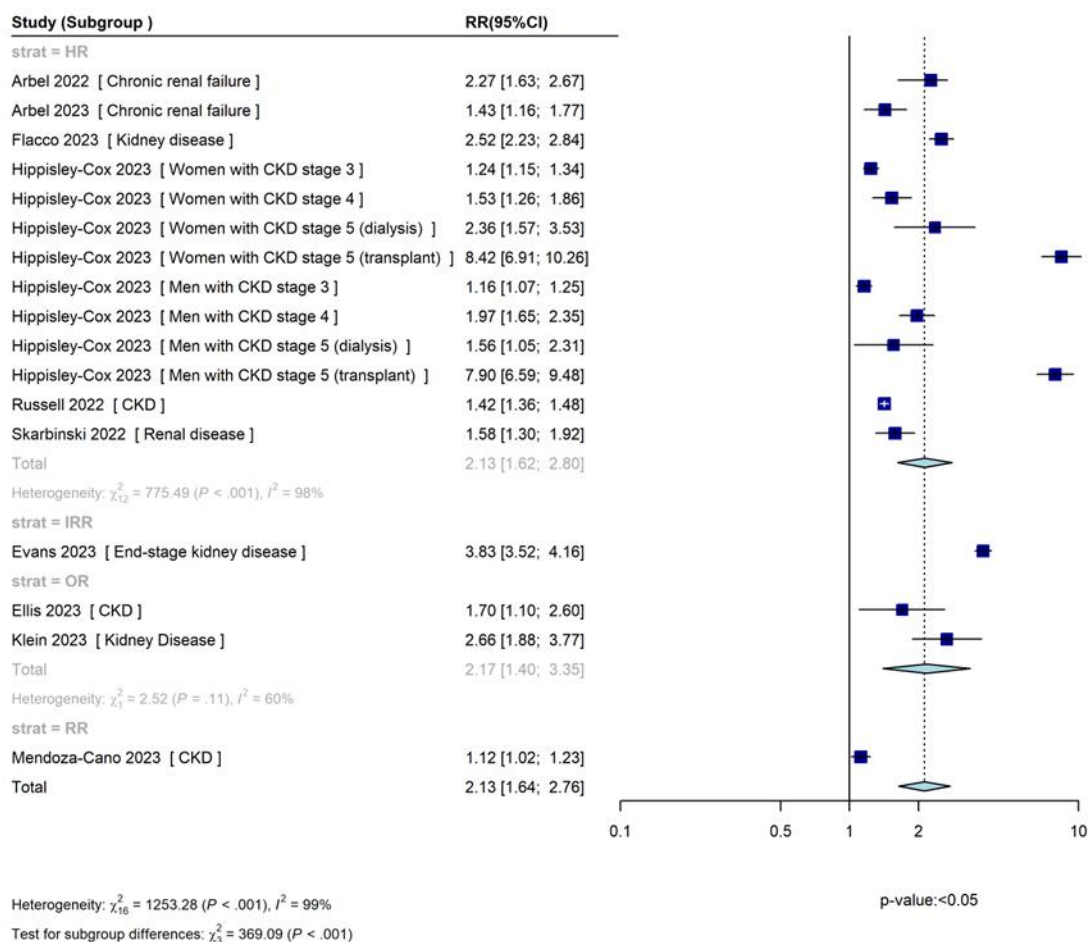
1170 2.6.6.1. Supplemental eFigure 15. Renal Disease, Death Outcome (No. of Subgroups: 44)



1171

1172 CI, confidence interval; CKD, chronic kidney disease; HR, hazard ratio; IRR, incidence rate ratio; OR, odds ratio; RR, risk ratio.

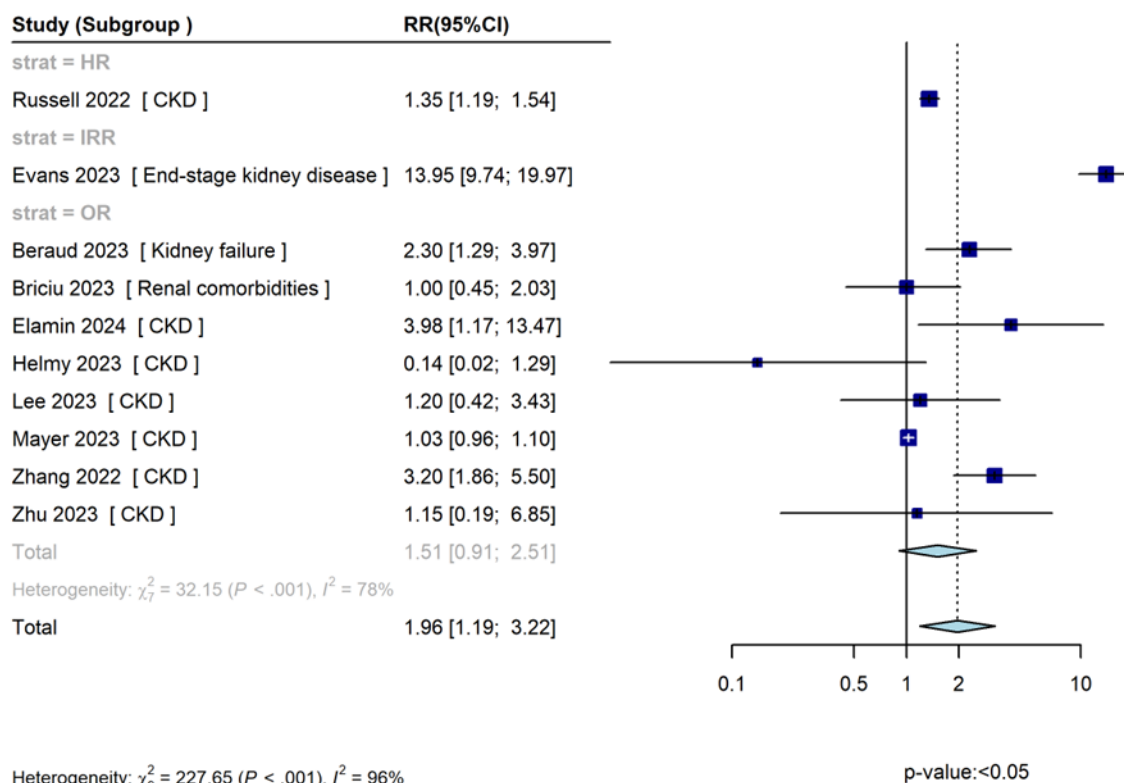
1173 2.6.6.2. Supplemental eFigure 16. Renal Disease, Hospitalization Outcome (No. of Subgroups: 17)



1174

1175 CI, confidence interval; CKD, chronic kidney disease; HR, hazard ratio; IRR, incidence rate ratio; OR, odds ratio; RR, risk ratio.

1176 2.6.6.3. Supplemental eFigure 17. Renal Disease, ICU Admission Outcome (No. of Subgroups: 10)



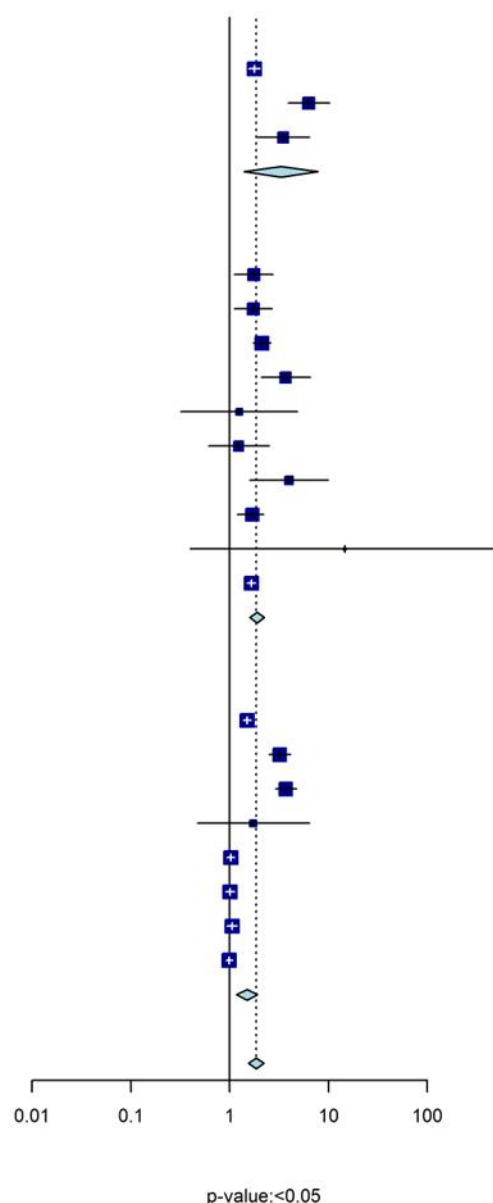
1177

1178  
1179

CI, confidence interval; CKD, chronic kidney disease; HR, hazard ratio; ICU, intensive care unit; IRR, incidence rate ratio; OR, odds ratio; RR, risk ratio.

1180 2.6.6.4. Supplemental eFigure 18. Renal Disease, Combined Outcome (No. of Subgroups: 21)

Study (Subgroup)	RR(95%CI)
strat = HR	
Bedston 2024 [ CKD stage 3 ]	1.78 [1.56; 2.04]
Bedston 2024 [ CKD stage 4 ]	6.31 [3.91; 10.20]
Bedston 2024 [ CKD stage 5 ]	3.49 [1.91; 6.39]
Total	3.32 [1.41; 7.85]
Heterogeneity: $\chi^2_2 = 28.23$ ( $P < .001$ ), $I^2 = 93\%$	
strat = OR	
Beppu 2024 [ Haemodialysis ]	1.75 [1.11; 2.74]
Brosh-Nissimov 2023 [ Chronic renal failure ]	1.74 [1.12; 2.68]
Gazit 2022 [ CKD ]	2.12 [1.73; 2.60]
Guo 2023 [ CKD ]	3.69 [2.09; 6.52]
Helmy 2023 [ CKD ]	1.25 [0.32; 4.83]
Li 2023 [ CKD ]	1.23 [0.61; 2.50]
Lu 2022 [ CKD ]	3.98 [1.59; 9.92]
Mizrahi Reuveni 2023 [ CKD ]	1.70 [1.20; 2.20]
Tsujimoto 2023 [ CKD ]	14.64 [0.40; 541.52]
Vo 2022 [ CKD ]	1.66 [1.51; 1.82]
Total	1.89 [1.60; 2.24]
Heterogeneity: $\chi^2_9 = 16.89$ ( $P = .05$ ), $I^2 = 47\%$	
strat = RR	
Agrawal 2022 [ CKD stage 3 ]	1.51 [1.38; 1.65]
Agrawal 2022 [ CKD stage 4 ]	3.22 [2.51; 4.12]
Agrawal 2022 [ CKD stage 5 ]	3.71 [2.90; 4.74]
Favia 2023 [ Renal pathologies ]	1.73 [0.47; 6.43]
Griggs 2024 [ Unvaccinated-BA1-Renal ]	1.03 [0.94; 1.12]
Griggs 2024 [ Unvaccinated-Post BA1-Renal ]	1.01 [0.91; 1.12]
Griggs 2024 [ Vaccinated-BA1-Renal ]	1.06 [0.94; 1.18]
Griggs 2024 [ Vaccinated-Post BA1-Renal ]	0.99 [0.92; 1.07]
Total	1.50 [1.17; 1.92]
Heterogeneity: $\chi^2_7 = 218.09$ ( $P < .001$ ), $I^2 = 97\%$	
Total	1.86 [1.55; 2.23]



Heterogeneity:  $\chi^2_{20} = 392.46$  ( $P < .001$ ),  $I^2 = 95\%$   
 Test for subgroup differences:  $\chi^2_2 = 4.44$  ( $P = .11$ )

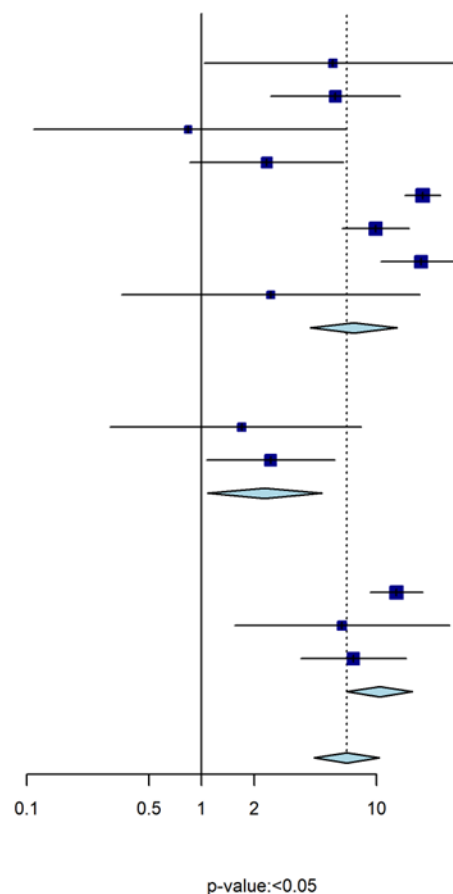
1181

1182 CI, confidence interval; CKD, chronic kidney disease; HR, hazard ratio; IRR, incidence rate ratio; OR, odds ratio; RR, risk ratio.

1183 2.6.7. Transplant

1184 2.6.7.1. Supplemental eFigure 19. Transplant, Death Outcome (No. of Subgroups: 13)

Study (Subgroup)	RR(95%CI)
strat = HR	
Hippisley-Cox 2023 [ Women with marrow transplant ]	5.64 [ 1.04; 30.72]
Hippisley-Cox 2023 [ Women with SOT ]	5.83 [ 2.49; 13.63]
Hippisley-Cox 2023 [ Men with marrow transplant ]	0.84 [ 0.11; 6.67]
Hippisley-Cox 2023 [ Men with SOT ]	2.36 [ 0.86; 6.50]
Nab 2023 [ Wave 4: Kidney transplant ]	18.40 [14.55; 23.27]
Nab 2023 [ Wave 4: Other organ transplant ]	9.92 [ 6.39; 15.39]
Nab 2023 [ Wave 5: Kidney transplant ]	18.03 [10.63; 30.59]
Nab 2023 [ Wave 5: Other organ transplant ]	2.49 [ 0.35; 17.71]
Total	7.42 [ 4.19; 13.14]
Heterogeneity: $\chi^2_7 = 35.72$ ( $P < .001$ ), $I^2 = 80\%$	
strat = OR	
Chen 2024 [ Organ transplantation ]	1.70 [ 0.30; 8.20]
de Prost 2022 [ Immunosuppression (3 category) SOT ]	2.49 [ 1.07; 5.80]
Total	2.30 [ 1.08; 4.88]
Heterogeneity: $\chi^2_1 = 0.16$ ( $P = .69$ ), $I^2 = 0\%$	
strat = RR	
Evans 2023 [ SOT $\leq$ 5 years prior ]	13.03 [ 9.22; 18.41]
Evans 2023 [ SCT $\leq$ 2 years prior ]	6.36 [ 1.55; 26.18]
Overvad 2022 [ Total SOTRs ]	7.40 [ 3.70; 14.80]
Total	10.44 [ 6.79; 16.06]
Heterogeneity: $\chi^2_2 = 2.72$ ( $P = .26$ ), $I^2 = 26\%$	
Total	6.78 [ 4.41; 10.43]
Heterogeneity: $\chi^2_{12} = 59.59$ ( $P < .001$ ), $I^2 = 80\%$	
Test for subgroup differences: $\chi^2_2 = 11.70$ ( $P = .003$ )	



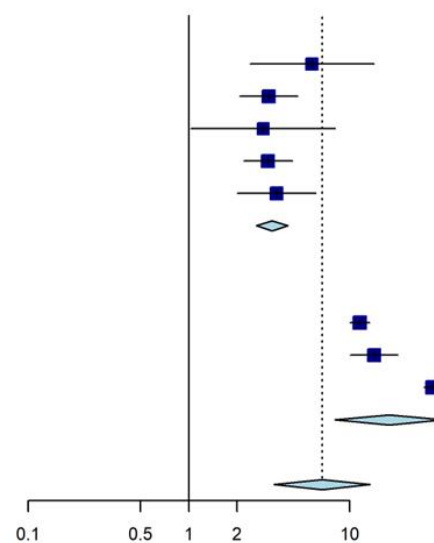
1185

1186  
1187

CI, confidence interval; HR, hazard ratio; IRR, incidence rate ratio; OR, odds ratio; RR, risk ratio; SCT, stem cell transplant; SOT, solid organ transplant; SOTR, solid organ transplant recipients.

1188 2.6.7.2. Supplemental eFigure 20. Transplant, Hospitalization Outcome (No. of Subgroups: 8)

Study (Subgroup )	RR(95%CI)
strat = HR	
Hippisley-Cox 2023 [ Women with marrow transplant ]	5.84 [ 2.41; 14.16]
Hippisley-Cox 2023 [ Women with SOT ]	3.14 [ 2.08; 4.75]
Hippisley-Cox 2023 [ Men with marrow transplant ]	2.90 [ 1.03; 8.14]
Hippisley-Cox 2023 [ Men with SOT ]	3.11 [ 2.20; 4.41]
Risk 2022 [ Bone marrow or organ transplant ]	3.52 [ 2.01; 6.16]
Total	3.31 [ 2.64; 4.14]
Heterogeneity: $\chi^2_4 = 1.87$ ( $P = .76$ ), $I^2 = 0\%$	
strat = RR	
Evans 2023 [ SOT $\leq 5$ years prior ]	11.60 [10.10; 13.31]
Evans 2023 [ SCT $\leq 2$ years prior ]	14.24 [10.15; 19.97]
Overvad 2022 [ Total SOTRs ]	32.80 [29.00; 37.00]
Total	17.64 [ 8.13; 38.28]
Heterogeneity: $\chi^2_2 = 127$ ( $P < .001$ ), $I^2 = 98\%$	
Total	6.75 [ 3.41; 13.37]



Heterogeneity:  $\chi^2_7 = 343.28$  ( $P < .001$ ),  $I^2 = 98\%$   
 Test for subgroup differences:  $\chi^2_1 = 16.53$  ( $P < .001$ )

p-value: <0.05

1189

1190 CI, confidence interval; HR, hazard ratio; IRR, incidence rate ratio; OR, odds ratio; RR, risk ratio; SCT, stem cell transplant; SOT, solid  
 1191 organ transplant; SOTR, solid organ transplant recipients.

1192 2.6.7.3. *Transplant, ICU Admission Outcome (No. of Studies: 1; No. of Subgroups: 2)*

1193 The studies reported the following results for the 'ICU' outcome in the 'Transplant' populations:

1194 • Evans 2023<sup>33</sup> (solid organ transplant  $\leq 5$  years prior): IRR (95% CI): 24.74 (14.28, 42.85)

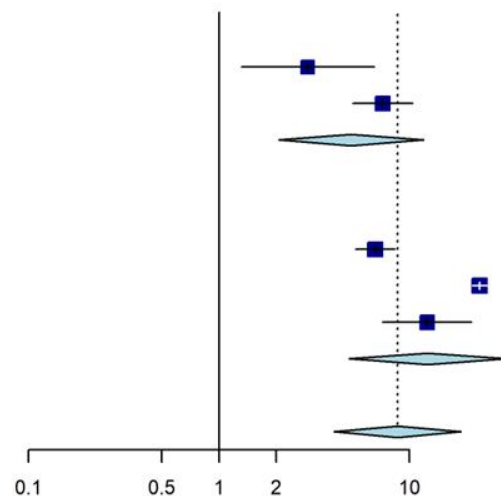
1195 • Evans 2023<sup>33</sup> (stem cell transplant  $\leq 2$  years prior): IRR (95% CI): 24.92 (6.03, 102.98)

1196 Both 'Transplant' subgroups in the Evans 2023 study found statistically significant increases in the risk of the  
1197 'ICU' outcome. However, both subgroups, the 'Stem cell transplant' subgroup in particular, had very wide CIs,  
1198 indicating a low number of 'Transplant' participants who were admitted to the ICU.



1199 2.6.7.4. Supplemental eFigure 21. Transplant, Combined Outcome (No. of Subgroups: 5)

Study (Subgroup)	RR(95%CI)
strat = HR	
Bedston 2024 [ Bone marrow or SCT ]	2.92 [ 1.31; 6.52]
Bedston 2024 [ SOT ]	7.22 [ 5.03; 10.36]
Total	4.94 [ 2.06; 11.86]
Heterogeneity: $\chi^2_1 = 4.07$ ( $P = .04$ ), $I^2 = 75\%$	
strat = RR	
Agrawal 2022 [ Bone marrow transplant ]	6.61 [ 5.22; 8.38]
Agrawal 2022 [ SOT ]	23.35 [ 21.43; 25.44]
Overvad 2022 [ Total SOTRs ]	12.40 [ 7.20; 21.20]
Total	12.47 [ 4.82; 32.25]
Heterogeneity: $\chi^2_2 = 99.6$ ( $P < .001$ ), $I^2 = 98\%$	
Total	8.65 [ 4.01; 18.65]



Heterogeneity:  $\chi^2_4 = 149.38$  ( $P < .001$ ),  $I^2 = 97\%$   
 Test for subgroup differences:  $\chi^2_1 = 1.97$  ( $P = .16$ )

p-value: <0.05

1200

1201  
1202

CI, confidence interval; HR, hazard ratio; IRR, incidence rate ratio; OR, odds ratio; RR, risk ratio; SCT, stem cell transplant; SOT, solid organ transplant; SOTR, solid organ transplant recipients.

1203

## References

- 1204 1. Ouzzani M, Hammady H, Fedorowicz Z, Elmagarmid A. Rayyan-a web and mobile app for systematic  
1205 reviews. *Syst Rev*. 2016;5(1):210.
- 1206 2. Wells G SB, O'Connell D, Peterson J, Welch V, Losos M. The Newcastle-Ottawa Scale (NOS) for  
1207 assessing the quality of nonrandomised studies in meta-analyses.  
1208 [https://www.ohri.ca/programs/clinical\\_epidemiology/oxford.asp](https://www.ohri.ca/programs/clinical_epidemiology/oxford.asp).
- 1209 3. JBI. Critical appraisal tools. <https://jbi.global/critical-appraisal-tools>.
- 1210 4. Greenland S. Quantitative methods in the review of epidemiologic literature. *Epidemiol Rev*. 1987;9:1-  
1211 30.
- 1212 5. DerSimonian R, Laird N. Meta-analysis in clinical trials. *Control Clin Trials*. 1986;7(3):177-188.
- 1213 6. Higgins JPT TJ, Chandler J, Li T, Page MJ, Welch V, eds. *Cochrane Handbook for Systematic Reviews*  
1214 *of Interventions [Internet]. Version 6.4 Cochrane, updated August 2023. [cited 2024 May 28].*  
1215 Available from: <https://training.cochrane.org/handbook/current>.
- 1216 7. Stuck AE, Rubenstein LZ, Wieland D. Bias in meta-analysis detected by a simple, graphical test.  
1217 Asymmetry detected in funnel plot was probably due to true heterogeneity. *BMJ*. 1998;316(7129):469;  
1218 author reply 470-461.
- 1219 8. Starkey T, Ionescu MC, Tilby M, et al. A population-scale temporal case-control evaluation of  
1220 COVID-19 disease phenotype and related outcome rates in patients with cancer in England (UKCCP).  
1221 *Sci Rep*. 2023;13(1):11327.
- 1222 9. Russell SL, Klaver BRA, Harrigan SP, et al. Clinical severity of Omicron subvariants BA.1, BA.2, and  
1223 BA.5 in a population-based cohort study in British Columbia, Canada. *J Med Virol*.  
1224 2023;95(1):e28423.
- 1225 10. Mayer C, Woo MS, Brehm TT, et al. History of cerebrovascular disease but not dementia increases the  
1226 risk for secondary vascular events during SARS-CoV-2 infection with presumed Omicron variant: a  
1227 retrospective observational study. *Eur J Neurol*. 2023;30(8):2297-2304.
- 1228 11. World Health Organization. Classification of Omicron (B.1.1.529): SARS-CoV-2 variant of concern.  
1229 Updated November 26, 2021. [https://www.who.int/news/item/26-11-2021-classification-of-omicron-\(b.1.1.529\)-sars-cov-2-variant-of-concern](https://www.who.int/news/item/26-11-2021-classification-of-omicron-(b.1.1.529)-sars-cov-2-variant-of-concern). Accessed July 3, 2024.
- 1230 12. Agrawal U, Bedston S, McCowan C, et al. Severe COVID-19 outcomes after full vaccination of  
1231 primary schedule and initial boosters: pooled analysis of national prospective cohort studies of 30  
1232 million individuals in England, Northern Ireland, Scotland, and Wales. *Lancet*. 2022;400(10360):1305-  
1233 1320.
- 1234 13. AlBahrani S, AlBarrak A, Al-Musawi T, et al. COVID-19 vaccine had a significant positive impact on  
1235 patients with SARS-COV-2 during the third (Omicron) wave in Saudi Arabia. *J Infect Public Health*.  
1236 2022;15(11):1169-1174.
- 1237 14. Arbel R, Sergienko R, Friger M, et al. Effectiveness of a second BNT162b2 booster vaccine against  
1238 hospitalization and death from COVID-19 in adults aged over 60 years. *Nat Med*. 2022;28(7):1486-  
1239 1490.
- 1240 15. Arbel R, Peretz A, Sergienko R, et al. Effectiveness of a bivalent mRNA vaccine booster dose to  
1241 prevent severe COVID-19 outcomes: a retrospective cohort study. *Lancet Infect Dis*. 2023;23(8):914-  
1242 921.
- 1243 16. Bahremand T, Yao JA, Mill C, et al. COVID-19 hospitalisations in immunocompromised individuals  
1244 in the Omicron era: a population-based observational study using surveillance data in British  
1245 Columbia, Canada. *Lancet Reg Health Am*. 2023;20:100461.
- 1246 17. Bao S, Lu G, Kang Y, et al. A diagnostic model for serious COVID-19 infection among older adults in  
1247 Shanghai during the Omicron wave. *Front Med (Lausanne)*. 2022;9:1018516.
- 1248 18. Bedston S, Almaghrabi F, Patterson L, et al. Risk of severe COVID-19 outcomes after autumn 2022  
1249 COVID-19 booster vaccinations: a pooled analysis of national prospective cohort studies involving 7.4  
1250 million adults in England, Northern Ireland, Scotland and Wales. *Lancet Reg Health Eur*.  
1251 2024;37:100816.
- 1252 19. Benites-Godínez V, Mendoza-Cano O, Trujillo X, et al. Survival analysis and contributing factors  
1253 among PCR-confirmed adult inpatients during the endemic phase of COVID-19. *Diseases*.  
1254 2023;11(3):119.
- 1255 20. Beppu H, Fukuda T, Otsubo N, et al. Comparative outcomes of hemodialysis patients facing pre-  
1256 Omicron and Omicron COVID-19 epidemics. *Ther Apher Dial*. 2024;28(1):51-60.
- 1257

- 1258 21. Beraud G, Bouetard L, Civljak R, et al. Impact of vaccination on the presence and severity of  
1259 symptoms in hospitalized patients with an infection of the Omicron variant (B.1.1.529) of the SARS-  
1260 CoV-2 (subvariant BA.1). *Clin Microbiol Infect.* 2023;29(5):642-650.
- 1261 22. Bournia V-K, Fragoulis GE, Mitrou P, et al. Outcomes of COVID-19 Omicron variant in patients with  
1262 rheumatoid arthritis: a nationwide Greek cohort study. *Rheumatology.* 2023;63(4):1130-1138.
- 1263 23. Briciu V, Topan A, Calin M, et al. Comparison of COVID-19 severity in vaccinated and unvaccinated  
1264 patients during the Delta and Omicron wave of the pandemic in a Romanian tertiary infectious diseases  
1265 hospital. *Healthcare.* 2023;11(3):373.
- 1266 24. Brosh-Nissimov T, Hussein K, Wiener-Well Y, et al. Hospitalized patients with severe coronavirus  
1267 disease 2019 during the Omicron wave in Israel: benefits of a fourth vaccine dose. *Clin Infect Dis.*  
1268 2022;76(3):e234-e239.
- 1269 25. Chen Z, Tian F, Zeng Y. Polypharmacy, potentially inappropriate medications, and drug-drug  
1270 interactions in older COVID-19 inpatients. *BMC Geriatrics.* 2023;23(1):774.
- 1271 26. Chen CL, Teng CK, Chen WC, et al. Clinical characteristics and treatment outcomes among the  
1272 hospitalized elderly patients with COVID-19 during the late pandemic phase in central Taiwan. *J*  
1273 *Microbiol Immunol Infect.* 2024;57(2):257-268.
- 1274 27. Choi S-H, Choi JH, Lee JK, et al. Clinical characteristics and outcomes of children with SARS-CoV-2  
1275 infection during the Delta and Omicron variant-dominant periods in Korea. *J Korean Med Sci.*  
1276 2023;38(9):e65.
- 1277 28. de Prost N, Audureau E, Heming N, et al. Clinical phenotypes and outcomes associated with SARS-  
1278 CoV-2 variant Omicron in critically ill French patients with COVID-19. *Nat Commun.*  
1279 2022;13(1):6025.
- 1280 29. de Prost N, Audureau E, Préau S, et al. Clinical phenotypes and outcomes associated with SARS-CoV-  
1281 2 Omicron variants BA.2, BA.5 and BQ.1.1 in critically ill patients with COVID-19: a prospective,  
1282 multicenter cohort study. *Intensive Care Med Exp.* 2023;11(1):48.
- 1283 30. Drummond PD, de Salles DB, de Souza NSH, et al. Profile and outcomes of hospitalized COVID-19  
1284 patients during the prevalence of the Omicron variant according to the Brazilian regions: a  
1285 retrospective cohort study from 2022. *Vaccines.* 2023;11(10):1568.
- 1286 31. Elamin MY, Maslamani YA, Alsheikh FA, et al. Impact of vaccination on morbidity and mortality in  
1287 adults hospitalized with COVID-19 during the Omicron wave in the Jazan Region, Saudi Arabia. *Saudi*  
1288 *Med J.* 2024;45(2):179-187.
- 1289 32. Ellis RJ, Moffatt CR, Aaron LT, et al. Factors associated with hospitalisations and deaths of residential  
1290 aged care residents with COVID-19 during the Omicron (BA.1) wave in Queensland. *Med J Aust.*  
1291 2023;218(4):174-179.
- 1292 33. Evans RA, Dube S, Lu Y, et al. Impact of COVID-19 on immunocompromised populations during the  
1293 Omicron era: insights from the observational population-based INFORM study. *Lancet Reg Health*  
1294 *Eur.* 2023;35:100747.
- 1295 34. Favia G, Barile G, Tempesta A, et al. Relationship between oral lesions and severe SARS-CoV-2  
1296 infection in intensive care unit patients. *Oral Dis.* 2024;30(3):1296-1303.
- 1297 35. Flacco ME, Acuti Martellucci C, Soldato G, et al. Predictors of SARS-CoV-2 infection and severe and  
1298 lethal COVID-19 after three years of follow-up: a population-wide study. *Viruses.* 2023;15(9):1794.
- 1299 36. Gazit S, Saciuk Y, Perez G, et al. Short term, relative effectiveness of four doses versus three doses of  
1300 BNT162b2 vaccine in people aged 60 years and older in Israel: retrospective, test negative, case-  
1301 control study. *BMJ.* 2022;377:e071113.
- 1302 37. Griggs EP, Mitchell PK, Lazariu V, et al. Clinical epidemiology and risk factors for critical outcomes  
1303 among vaccinated and unvaccinated adults hospitalized with COVID-19-VISION Network, 10 states,  
1304 June 2021-March 2023. *Clin Infect Dis.* 2024;78(2):338-348.
- 1305 38. Guo Y, Guo Y, Ying H, et al. In-hospital adverse outcomes and risk factors among chronic kidney  
1306 disease patients infected with the omicron variant of SARS-CoV-2: a single-center retrospective study.  
1307 *BMC Infect Dis.* 2023;23(1):698.
- 1308 39. Helmy MA, Milad LM, Hasanin AM, et al. Parasternal intercostal thickening at hospital admission: a  
1309 promising indicator for mechanical ventilation risk in subjects with severe COVID-19. *J Clin Monit*  
1310 *Comput.* 2023;37(5):1287-1293.
- 1311 40. Hippisley-Cox J, Khunti K, Sheikh A, Nguyen-Van-Tam JS, Coupland CAC. Risk prediction of covid-  
1312 19 related death or hospital admission in adults testing positive for SARS-CoV-2 infection during the  
1313 omicron wave in England (QCOVID4): cohort study. *BMJ.* 2023;381:e072976.

- 1314 41. Jamaati H, Karimi S, Ghorbani F, et al. Effectiveness of different vaccine platforms in reducing  
1315 mortality and length of ICU stay in severe and critical cases of COVID-19 in the Omicron variant era:  
1316 a national cohort study in Iran. *J Med Virol.* 2023;95(3):e28607.
- 1317 42. Kang J-M, Kang M, Kim Y-E, et al. Severe coronavirus disease 2019 in pediatric solid organ transplant  
1318 recipients: big data convergence study in Korea (K-COV-N cohort). *Int J Infect Dis.* 2023;134:220-  
1319 227.
- 1320 43. Karageorgou V, Papaioannou AI, Kallieri M, et al. Patients hospitalized for COVID-19 in the periods  
1321 of Delta and Omicron variant dominance in Greece: determinants of severity and mortality. *J Clin Med.*  
1322 2023;12(18):5904.
- 1323 44. Kim SH, Kim T, Choi H, Shin TR, Sim YS. Clinical outcome and prognosis of a nosocomial outbreak  
1324 of COVID-19. *J Clin Med.* 2023;12(6):2279.
- 1325 45. Klein EY, Fall A, Norton JM, et al. Severity outcomes associated with SARS-CoV-2 XBB variants, an  
1326 observational analysis. *J Clin Virol.* 2023;165:105500.
- 1327 46. Konermann FM, Gessler N, Wohlmuth P, et al. High in-hospital mortality in SARS-CoV-2-infected  
1328 patients with active cancer disease during Omicron phase of the pandemic: insights from the CORONA  
1329 Germany study. *Oncol Res Treat.* 2023;46(5):201-210.
- 1330 47. Lee CM, Kim M, Park SW, et al. Clinical outcomes and immunological features of COVID-19 patients  
1331 receiving B-cell depletion therapy during the Omicron era. *Infect Dis (Lond).* 2024;56(2):116-127.
- 1332 48. Li H, Jia X, Wang Y, et al. Differences in the severity and mortality risk factors for patients  
1333 hospitalized for COVID-19 pneumonia between the early wave and the very late stage of the pandemic.  
1334 *Front Med (Lausanne).* 2023;10:1238713.
- 1335 49. Li D-J, Zhou C-C, Huang F, Shen F-M, Li Y-C. Clinical features of omicron SARS-CoV-2 variants  
1336 infection associated with co-infection and ICU-acquired infection in ICU patients. *Front Public Health.*  
1337 2024;11:1320340.
- 1338 50. Liu Y, Qi Z, Bai M, et al. Combination of chest computed tomography value and clinical laboratory  
1339 data for the prognostic risk evaluation of patients with COVID-19. *Int J Gen Med.* 2023;16:3829-3842.
- 1340 51. Lu G, Zhang Y, Zhang H, et al. Geriatric risk and protective factors for serious COVID-19 outcomes  
1341 among older adults in Shanghai Omicron wave. *Emerg Microbes Infect.* 2022;11(1):2045-2054.
- 1342 52. Mendoza-Cano O, Trujillo X, Ríos-Silva M, et al. Association between vaccination status for COVID-  
1343 19 and the risk of severe symptoms during the endemic phase of the disease. *Vaccines.*  
1344 2023;11(10):1512.
- 1345 53. Mizrahi Reuveni M, Kertes J, Shapiro Ben David S, et al. Risk stratification model for severe COVID-  
1346 19 disease: a retrospective cohort study. *Biomedicines.* 2023;11(3):767.
- 1347 54. Morris CP, Eldesouki RE, Sachithanandham J, et al. Omicron subvariants: clinical, laboratory, and cell  
1348 culture characterization. *Clin Infect Dis.* 2023;76(7):1276-1284.
- 1349 55. Nab L, Parker EPK, Andrews CD, et al. Changes in COVID-19-related mortality across key  
1350 demographic and clinical subgroups in England from 2020 to 2022: a retrospective cohort study using  
1351 the OpenSAFELY platform. *Lancet Public Health.* 2023;8(5):e364-e377.
- 1352 56. Nevejan L, Ombelet S, Laenen L, et al. Severity of COVID-19 among hospitalized patients: Omicron  
1353 remains a severe threat for immunocompromised hosts. *Viruses.* 2022;14(12):2736.
- 1354 57. O'Leary AL, Wattengel BA, Carter MT, Drye AF, Mergenhagen KA. Risk factors associated with  
1355 mortality in hospitalized patients with laboratory confirmed SARS-CoV-2 infection during the period  
1356 of omicron (B.1.1.529) variant predominance. *Am J Infect Control.* 2023;51(6):603-606.
- 1357 58. Overvad M, Koch A, Jespersen B, et al. Outcomes following SARS-CoV-2 infection in individuals  
1358 with and without solid organ transplantation-A Danish nationwide cohort study. *Am J Transplant.*  
1359 2022;22(11):2627-2636.
- 1360 59. Parajuli P, Sabo R, Alsaadawi R, et al. Fibrosis-4 (FIB-4) index as a predictor for mechanical  
1361 ventilation and 30-day mortality across COVID-19 variants. *J Clin Transl Sci.* 2023;7(1):e213.
- 1362 60. Parra-Bracamonte GM, Lopez-Villalobos N, Velazquez MA, et al. Comparative analysis of risk factors  
1363 for COVID-19 mortality before, during and after the vaccination programme in Mexico. *Public Health.*  
1364 2023;215:94-99.
- 1365 61. Patton MJ, Orihuela CJ, Harrod KS, et al. COVID-19 bacteremic co-infection is a major risk factor for  
1366 mortality, ICU admission, and mechanical ventilation. *Crit Care.* 2023;27(1):34.
- 1367 62. Puyat JH, Fowokan A, Wilton J, et al. Risk of COVID-19 hospitalization in people living with HIV and  
1368 HIV-negative individuals and the role of COVID-19 vaccination: a retrospective cohort study. *Int J*  
1369 *Infect Dis.* 2023;135:49-56.

- 1370 63. Radhakrishnan N, Liu M, Idowu B, et al. Comparison of the clinical characteristics of SARS-CoV-2  
 1371 Delta (B.1.617.2) and Omicron (B.1.1.529) infected patients from a single hospitalist service. *BMC*  
 1372 *Infect Dis.* 2023;23(1):747.
- 1373 64. Rasmussen LD, Cowan S, Gerstoft J, et al. Outcomes following severe acute respiratory syndrome  
 1374 coronavirus 2 infection among individuals with and without HIV in Denmark. *AIDS.* 2023;37(2):311-  
 1375 321.
- 1376 65. Risk M, Hayek SS, Schiopu E, et al. COVID-19 vaccine effectiveness against omicron (B.1.1.529)  
 1377 variant infection and hospitalisation in patients taking immunosuppressive medications: a retrospective  
 1378 cohort study. *Lancet Rheumatol.* 2022;4(11):e775-e784.
- 1379 66. Shakor ASaA, Samsudin EZ, Chen XW, Ghazali MH. Factors associated with COVID-19 brought-in  
 1380 deaths: a data-linkage comparative cross-sectional study. *J Infect Public Health.* 2023;16(12):2068-  
 1381 2078.
- 1382 67. Shi HJ, Yang J, Eom JS, et al. Clinical characteristics and risk factors for mortality in critical COVID-  
 1383 19 patients aged 50 years or younger during Omicron wave in Korea: comparison with patients older  
 1384 than 50 years of age. *J Korean Med Sci.* 2023;38(28):e217.
- 1385 68. Simmons AE, Amoako A, Grima AA, et al. Vaccine effectiveness against hospitalization among  
 1386 adolescent and pediatric SARS-CoV-2 cases between May 2021 and January 2022 in Ontario, Canada:  
 1387 a retrospective cohort study. *PLoS One.* 2023;18(3):e0283715.
- 1388 69. Skarbinski J, Wood MS, Chervo TC, et al. Risk of severe clinical outcomes among persons with  
 1389 SARS-CoV-2 infection with differing levels of vaccination during widespread Omicron (B.1.1.529)  
 1390 and Delta (B.1.617.2) variant circulation in Northern California: a retrospective cohort study. *Lancet*  
 1391 *Reg Health Am.* 2022;12:100297.
- 1392 70. Svensson ALL, Emborg H-D, Bartels LE, et al. Outcomes following SARS-CoV-2 infection in  
 1393 individuals with and without inflammatory rheumatic diseases: a Danish nationwide cohort study. *Ann*  
 1394 *Rheum Dis.* 2023;82(10):1359-1367.
- 1395 71. Tsujimoto Y, Kobayashi M, Oku T, et al. Outcomes in novel hospital-at-home model for patients with  
 1396 COVID-19: a multicentre retrospective cohort study. *Fam Pract.* 2023;40(5-6):662-670.
- 1397 72. Vo AD, La J, Wu JT, et al. Factors associated with severe COVID-19 among vaccinated adults treated  
 1398 in US veterans affairs hospitals. *JAMA Netw Open.* 2022;5(10):e2240037.
- 1399 73. Wang X, Zein J, Ji X, Lin DY. Impact of vaccination, prior infection, and therapy on Omicron  
 1400 infection and mortality. *J Infect Dis.* 2023;227(8):970-976.
- 1401 74. Ward IL, Robertson C, Agrawal U, et al. Risk of COVID-19 death in adults who received booster  
 1402 COVID-19 vaccinations in England. *Nat Commun.* 2024;15(1):398.
- 1403 75. Xin S, Chen W, Yu Q, Gao L, Lu G. Effect of the number of coronavirus disease 2019 (COVID-19)  
 1404 vaccination shots on the occurrence of pneumonia, severe pneumonia, and death in SARS-CoV-2-  
 1405 infected patients. *Front Public Health.* 2024;11:1330106.
- 1406 76. Xing Y, Sun Y, Tang M, et al. Variables associated with 30-day mortality in very elderly COVID-19  
 1407 patients. *Clin Interv Aging.* 2023;18:1155-1162.
- 1408 77. Yang H, Wang Z, Zhang Y, et al. Clinical characteristics and factors for serious outcomes among  
 1409 outpatients infected with the Omicron subvariant BF.7. *J Med Virol.* 2023;95(8):e28977.
- 1410 78. Zhang Y, Han J, Sun F, et al. A practical scoring model to predict the occurrence of critical illness in  
 1411 hospitalized patients with SARS-CoV-2 omicron infection. *Front Microbiol.* 2022;13:1031231.
- 1412 79. Zhao Q, Zheng B, Han B, et al. Is azvudine comparable to nirmatrelvir-ritonavir in real-world efficacy  
 1413 and safety for hospitalized patients with COVID-19? a retrospective cohort study. *Infect Dis Ther.*  
 1414 2023;12(8):2087-2102.
- 1415 80. Zhu Z, Cai J, Tang Q, et al. Circulating eosinophils associated with responsiveness to COVID-19  
 1416 vaccine and the disease severity in patients with SARS-CoV-2 omicron variant infection. *BMC Pulm*  
 1417 *Med.* 2023;23(1):177.

1418