

Understanding the influence of leadership, organisation, and policy on delivering an integrated child health and social care service in community settings: A qualitative exploration using the SELFIE framework

Litchfield I¹, Harper L¹, Abbas S², Dutton F³, Wolhuter C⁴, Bird C⁵

¹ Department of Applied Health Research, University of Birmingham, UK

² Clinical Research Department, Primary Health Care Corporation, Qatar

³ Small Heath Medical Practice, Birmingham, UK

⁴ GreenSquareAccord, UK

⁵ Birmingham Women's and Children's NHS Foundation Trust, Birmingham, UK

Abstract

Introduction

It's understood in the UK that integrated care is well-placed to address the prevalence of chronic conditions, obesity, and mental ill health in children and young people (CYP) living in minoritized and economically-marginalised communities in high-income countries. The Sparkbrook Childrens' Zone is an example of a place-based integrated health and social care service situated in a super-diverse community in a large post-industrial city, developed to support children and young people. To realise its potential, it's important to understand the organizational and infrastructural requirements of a service combining clinical and non-clinical staff from a range of organisations and backgrounds. This will improve the current service offer and inform the design and delivery of similar initiatives.

Materials and Methods,

We conducted a qualitative exploration of the experiences of staff delivering the service and used a directed content analysis to populate and present the results within the Sustainable integrated chronic care model for multi-morbidity: delivery, financing, and performance (SELFIE) framework. The analysis presented here focuses on the domains of Leadership and Governance, Workforce, Financing, and Information and Research.

Results

A total of 14 staff were interviewed including clinicians from primary and secondary care, social care providers, local voluntary groups, and school-based family mentors. Staff described the gap between integration at system level and the absence of process and

support to deliver a unified health and social care service in real-world environments. The benefits of supportive and accessible leadership, and an open, learning environment were described, as was the trust developed through meaningful consultations with local communities. The lack of administrative support was noticeable, particularly when managing a workforce drawn from multiple organisations, as was the lack of secure funding and the need for reliable long-term evidence to inform decisions on design and funding.

Conclusions

Despite decades of structural reform aimed at integrating the health and social care system in the UK, there was a surprising lack of system-level practical support for delivering a place-based integrated health and care service. The balance remained to be struck between the need to demonstrate benefits for short term funding cycles and the reliability of evidence being gathered from a complex and evolving service.

Keywords: Integrated care; Health inequalities; Primary care; Children and young people; Community engagement

Introduction

The increasing prevalence of chronic conditions, obesity, and mental ill health in high income countries is a particular concern for children, young people (CYP) and families belonging to underserved populations i.e., those within minoritized, economically and culturally marginalized communities (1-3). Their challenges are exacerbated by a range of socio-economic and cultural pressures that inhibit the utilisation of primary or preventative health care services (4-7). Evidence suggests that integrated place-based health and social care can improve patient satisfaction, population health and cost effectiveness (8-10). To this end policymakers and commissioners in multiple health systems worldwide are encouraging greater collaboration between health services, social care providers, local authorities, and voluntary, community and faith sector (VCFS) groups to improve health outcomes and more effectively address the social determinants of health such as income, housing, and food insecurity (11-18).

Work on how precisely these policy goals might best be achieved is in its infancy and evidence of best practice is inconsistent (19-24). Meanwhile, in the UK, the latest attempts at reform have seen services restructured into integrated care systems combining primary, secondary, community and social care (25-27). However delivering integrated health and social care at community level in the UK is challenging within a fragmented health and care system (28) with provider's training and qualifications focused on a single speciality or setting (29-31), and a culture lacking in collaborative approaches to leadership or governance (32-36).

As attempts continue to overcome these barriers a number of pilots have emerged in the UK prioritizing localised delivery of preventative health and social care targeting CYP from underserved populations (8, 37, 38). The Sparkbrook Children’s Zone is one such pilot service, collocating general practitioners, family support workers, mental health outreach, and paediatricians in a low-income area of Birmingham (UK) to deliver placed-based health and social care to underserved CYP (39). This challenging environment means it offers a valuable opportunity for an in-depth exploration of how these novel services perform and the contextual influences that impact their success. Our sister paper has described the nature, and content of the service being delivered (40). This paper will focus on the processes and infrastructure that underpin the ability to deliver localised integrated care. Specifically, the impact of regional and service-related leadership, the challenges of recruitment and funding and way in which data are collected and used.

Methods

Study design

The work consists of a qualitative exploration of staff perspectives using data gathered from a series of semi-structured interviews and analysed using the “*Sustainable intEgrated chronic care modeLs for multi-morbidity: delivery, Financing, and performance*” (www.selfie2020.eu). The framework consists of a number of coordination concepts from micro- through to macro-levels incorporated within six domains informed by the World Health Organisation’s interpretation of healthcare systems (see Figure 1) (41).

Population/recruitment

The SCZ is based in the Sparkbrook & Balsall Heath East ward in Birmingham, a large and diverse city in the UK’s midlands. It is the second most populous ward in the city, has the second highest level of deprivation and a superdiverse, young population with high rates of unemployment and infant mortality in England (42). It is also disproportionately affected by childhood obesity, child criminal and sexual exploitation, poor housing, chronic disease, and high levels of universal needs around housing, food, clothing, sanitary products, and essential supplies (42).

All staff involved in developing, managing and delivering the SCZ were eligible for inclusion. They were approached by [1st author] and [6th author] who were unknown to potential participants, all were supplied with a participant information sheet, opportunity to ask

questions and ultimately provided informed consent before the interview commenced. We aimed to carry out interviews with 5-6 service providers from each organisation (including service leads, those actively delivering the service and administrative/support staff) to reach a total of 25 interview sufficient to provide a rich and representative data set (43).

Data Collection:

Semi-structured interviews were conducted online (via Teams or Zoom), face-to-face in a room at the clinic, or via telephone by [First author] and [Third author]. They are experienced qualitative researchers and used a topic guide informed by the existing literature and covering a range of themes including experiences of engaging with the local Integrated Care System, barriers and facilitators to delivering the SCZ, and reflections on future development. Digital audio recordings were transcribed verbatim by an approved third-party transcription service and the data were managed using nVivo vs12.

Data analysis:

Two authors [first author] and [third author] independently coded each transcript fitting the data within each of the relevant themes of the SELFIE framework using a directed content analysis (44) that allowed the identification and inclusion of emerging domains, constructs or sub-constructs (45). Any differences in coding were discussed between the two authors and a consensus arrived at. The final allocation of the data within the coding framework was agreed by all authors. The work presented here explores the data through the domains of

Leadership & Governance, Workforce, Finance, and Information & Research (46). (The domain of Service Delivery is explored in our sister paper (40)).

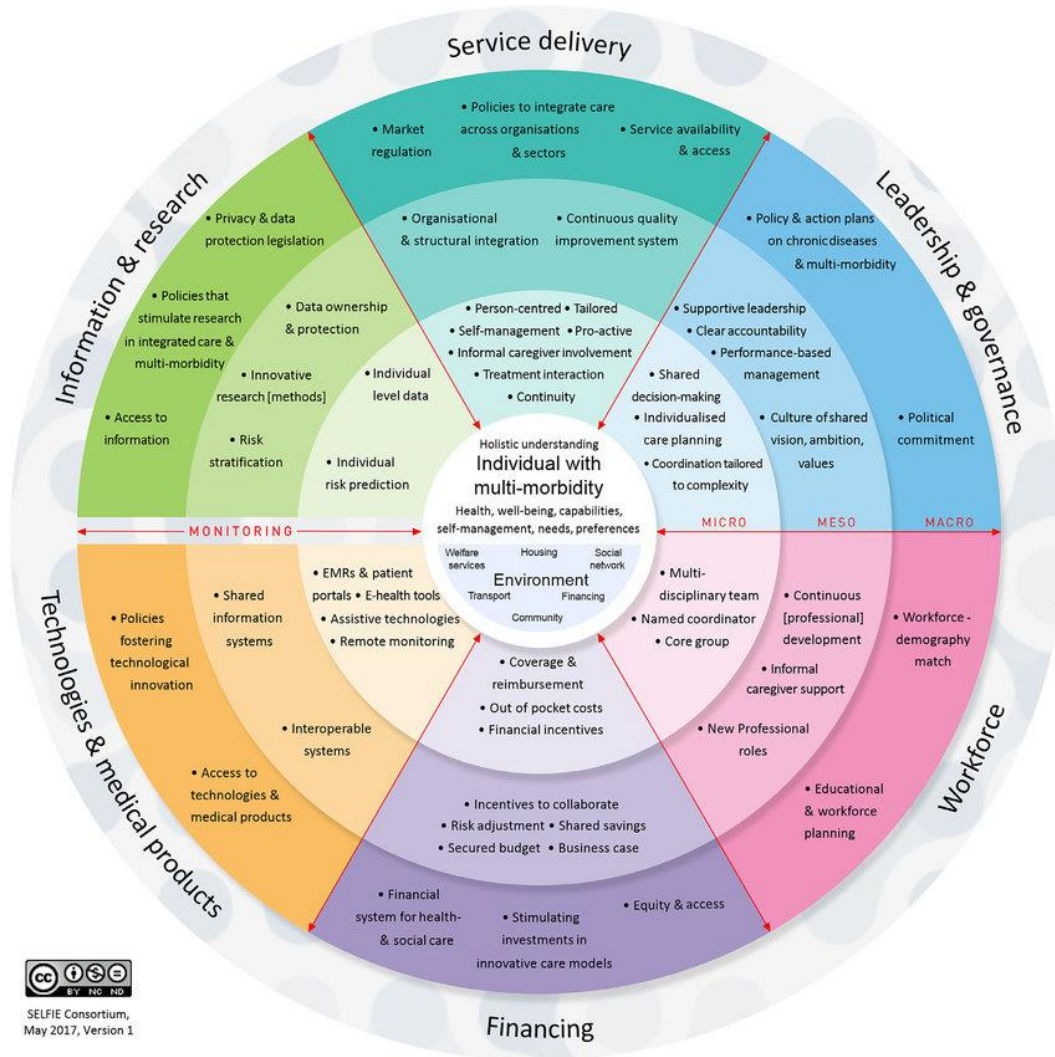


Figure 1 The SELFIE framework(46)

Results

Characteristics of participants

We interviewed 14 participants over 13 interviews (two participants were interviewed at the same time). The interviews lasted between 18 and 70 minutes. Of the 14 participants five were from primary care, three secondary care, two from social support, one that worked in local education, and one for a children's charity.

Table 1 Characteristics of participants

<i>Participant ID</i>	<i>Sector</i>	<i>Role/Job Title</i>
01	Secondary care	Senior staff
02	Education	Family mentor
03	Primary Care	GP
04	Secondary Care	Consultant
05	Secondary Care	Consultant
06	Primary Care	GP
07	Social support	Family Support
08	Integrated care	Operations manager
09	Primary care	Health Care
10	Primary care	Health Care
11	Children's charity	Service lead
12	Primary care	GP
13	Social support	Project manager
14	Social support	Service lead

Table 2. Summary of results

Domain	Definition	Level	Construct	Example from SCZ
1. Leadership & Governance	The strategic policy frameworks and organisational oversight that shape the delivery of care. Includes regulation, system design, and accountability.	<i>Micro</i>	Coordination tailored to complexity	The provision of colocated health and social care/support
		<i>Meso</i>	Shared vision/decision making	Open lines of communication with senior staff (shared learning), Joint purpose
		<i>Macro</i>	Political commitment	Lack of integrated infrastructure, Shared characteristics with national “Family Hubs” initiative
			Policy and action plans	Community engagement, Organic development
2. Workforce	The knowledge, skills, motivation and deployment of the people responsible for organizing and delivering health and social care services.	<i>Micro</i>	Multi-Disciplinary Team	Seamless referrals between agencies
		<i>Meso</i>	Continuous development	Training in preventative care, improved understanding of other elements of service
		<i>Macro</i>	Demography match	Multi-lingual workforce
			Educational and workforce planning	Need for administrative infrastructure and support, Opportunities for non-clinical roles
3. Financing	The allocation of money to cover the health needs of the people, individually and collectively, includes both core funding and service incentives.	<i>Micro</i>	Coverage and reimbursement	Different budgets and employers
		<i>Macro</i>	Stimulating investment in innovative services	Perceptions of duplication, Reduce bureaucracy
			Finance system for health and social care	System wide lack of resource
4. Information & Research	The health-related information generated that can facilitate analysis and synthesis and underpin evidence-based health and social care.	<i>Macro</i>	Access to information	Appropriate time scale, Evaluation of process as well as outcome

Qualitative results

Below our findings are presented within each of the relevant constructs within the four named domains and pre-determined constructs of the SELFIE framework. They are described alongside exemplar quotes identified by Participant ID, Sector, and Job role. These findings are summarised in Table 2.

1. Leadership & Governance

Coordination tailored to complexity (Micro)

The ability to treat the patient and address the social determinants of health within a single place-based service was described with the understanding that both health and social support were needed for the SCZ to succeed:

“...reducing the inappropriate use of A&E, is the NHS ambition, and that’s their thing... in Early Help our objective is to prevent families from going into crisis, and we can’t do that on our own, so we can’t do that just in the community sector or the voluntary sector, we have to have doctors and GPs, dentists and youth workers...to come in and influence how a family build resilience. So SCZ is a mechanism of doing that...we can do our best to support a person who has severe asthma by improving their home situation, so reducing mould, getting better living conditions, getting them to be more active, get them outside of the house more, but if they don’t have the inhaler, or they don’t have the opportunity to go and see a doctor...our objective is really to be working together...it’s never a single issue...”

P013, Social Support, Project manager

Shared vision/decision making (Meso-)

Staff reflected on how service leads were clear on what the aims of the service were and how they should be met. This included the creation of an open learning culture within the organisation where senior service leads were equally happy to offer advice as to welcome challenge and enquiry:

“...the people who are working at the Children’s Zone they’re all just very open. There’s no ‘boundaries’, there’s no ‘silly questions’... and shared learning just flourishes really...”we’ll learn from you and you’ll learn from us,” and that’s what’s happened.”

P12, Primary care, GP

Political commitment (Macro-)

Despite a regional and national drive towards integration that has lasted decades(47), participants described the lack of any established processes or underpinning logistical infrastructure necessary to deliver a combined place-based service:

“I think there’s an awful lot of talk about integration, and actually there’s very little experience of it having been done, and of the challenges then that go with it, and that’s all I talked about with the logistics, yes that we don’t have shared emails, and that the governance how do you define who does that? Who gets a CQC registration when it’s a joint clinic? It’s so many things like that, that can be really, really challenging, and I don’t think the big organisation of the NHS is in any way geared up really to managing that level of complexity.”

P04, Secondary Care, Consultant

There was reflection on how they might inform the Local Authorities interpretation of the national “Family Hub” initiative that provides and signposts to a range of practical support for young families (48).

“The [council] is thinking about family hubs, so this model is really working on family hub level, and it is doing exactly what family hubs are supposed to do, bring a range of services together in one area. So this model could be a good pilot, an idea for a family hub, how health and non-health actually works together, and then yes you can look at any number of different pathways to go through this particular service.”

P03, Primary care, GP

Policy and action plans (Macro-)

Participants described how the creation of the SCZ was motivated by chance when a senior lead from the local children's hospital had mistakenly been sent to the emergency department. Without this encounter and the realisation that communication and understanding between the hospital and local primary care services the service would not exist. In the early stages of development that followed, the leads of the SCZ recognised the importance of understanding the needs and preferences of the community and building trust in mainstream healthcare (49). This involved a period of consultation lasting several months and enabled the service to reflect local socio-cultural sensitivities:

"I know it did take time for us to build trust in that community, so it can't be like a roving thing, that you land somewhere and then move somewhere in three months, it takes three months for that trust to build, and it takes a while for that to embed in professional networks but also community networks. So, once you've got that then you can keep going. So, it's structuring KPIs, and whatever other measures they'll put in to allow for that community engagement, to allow to that trust to be built from professionals and the community..."

P11, Children's Charity, Service Lead

2. Workforce

Multi-Disciplinary Team (Micro-)

The SCZ was predicated on a creating a multi-disciplinary team that not only provided the key tenets of health and social care but whose multi-disciplinarity enabled practitioners to link directly into other services on site such as those that provided well-being counselling or preventative care:

"...the majority of time I really do feel fulfilled going there. I do feel like I have the opportunity to point out gently and kindly [to families] the areas where behavioural change does need to happen for various lifestyle factors like

obesity, diet, parenting, whatever...and I crucially got the support to be able to do it.”

P04, Secondary Care, Consultant

Continuous development (Meso-)

For many of the clinicians involved in delivering the SCZ the process required the development of additional skill sets and learning how other sectors worked. For example the lead of the counselling service that was part of the SCZ explained how they would invite clinicians to observe how the PAUSE counselling service operates(50):

“...one of the key things for us when we start working in partnership with anybody is to get that practitioner - whatever their inexperience - into the room to see how it works. Because it’s very different, and they need to be able to prepare that parent, or carer, or young person for that. So, it’s just seeing how it works. So, in that moment when you’re sharing that signposting with that young person, or that family, [providing] that reassurance and that understanding of the model as well as all the comms, and giving them leaflets and explaining it.

P11, Children’s Charity, Service Lead

Demography match (Macro-)

There was an awareness of the super-diverse population the SCZ was serving and the importance of service providers being able to communicate in several languages reflective of that cultural diversity:

“We have to adapt our communication style... a number of our team are able to speak multiple different languages, so in our team we can speak Punjabi, Urdu, Arabic, Farsi, French, there’s quite a few other languages, and that really enables us to offer a service that feeds into the needs of our families.”

P13, Social Support, Project Manager

Staff education and planning

Senior service leads lamented the lack of any necessary administrative support required to underpin the service with much of the burden falling to clinical staff. For example, this included the absence of a dedicated project manager that could have alleviated some of the managerial burden placed on clinicians:

“... going into it with some administrative support is really important, ...because I think that has probably been the limiting factor for the clinicians involved. ...if they had a project manager who could do the thinking and do the architecture stuff, and just tell them when to show up and be a doctor...their capacity to do more and to expand would have been greater.

P01, Secondary Care, Senior Staff

Another specific example was the necessity for dedicated human resource support to manage the complexities of even a single clinician supporting one SCZ clinic a week:

“...the other thing about the local integration which I think has to be acknowledged is that if you're having a doctor coming every week, to come and do the work, there is an impact on whoever is doing HR. I know this sounds really small, but again it's one of those things that took us by surprise... there has to be quite a process to make sure that person has adequate DBS checks, that they've got the appropriate indemnity in place, that they are registered and you have their band details... that you need to make sure that essentially your admin support is prepped for the requirement and that you have adequate admin support for the service, ... We've been taken by surprise ... for one session a week service it's been quite admin heavy”

P08, Integrated care system, Operations Manager

3. Finance

Coverage and reimbursement (Micro-)

Securing and paying for staff drawn from multiple organisations and funding bodies presented difficulties in the absence of a pre-defined process to enable payment:

“...we’ve had a bit of a challenge ... for instance, our eczema support was only available on a trial period...dental, we were really keen to get on-board and that hasn’t quite worked out. There’s been just some teething problems around how people are employed and paid, because this is an integrated model and we’re all working in different places, and none of us have a unified employer.”

P05, Secondary care, Consultant

Finance system for health and social care (Macro-)

The SCZ has been developed and delivered within a health and social care system that has been chronically underfunded for over a decade (51). Reflective of this broader lack of resources was the limitations on the amount of (paid) time clinicians were able to devote to the SCZ.

“...where I used to work they would have hired someone to do this as their full time job, but instead you’ve got [consultant] working in A&E, [GP] doing her GP plus A&E and you just think... I don’t know, in your free time, ... you’re then trying to do this. So yeah, I would say that is a big problem...there’s just not enough resource.”

P13, Social Support, Project Manager

Stimulating investment (Macro-)

The SCZ was purposely designed to gather multiple services together in a single location which risked the perception described by one senior service lead that it was being funded to repeat work that individual services already provided elsewhere, or otherwise “needs to move more towards using non-doctors” (P03, GP) to bring costs down:

lots of services have already been commissioned to do things that this service is adding. They need to at this time if they are doing it, what is essentially not happening, because if they come for funding next year that is the thing they will be asked...people will turn around and say but we are already paying this agency or that agency to do that work, and you are now asking us for more money. So, I think they will have to do a little bit of work on why is it [usual care] not working, and what is the need for them to be there.

P03, Primary care, GP

In describing the steps around the initial development and introduction of the SCZ one senior lead described the inhibitive nature of some of bureaucracy they had to navigate.

“I wish there could be an element of cutting through stuff, and that can happen across the board really, cutting through the red tape to get somewhere to be like ‘Oh my goodness can you just do it! You’ve got a good idea...’ it can really suck the energy out of everyone in the room, the requirements to go through to process - all this ‘stuff’. I don’t know, I think there is a way to do things safely, which doesn’t have to stifle everything.

P04, Secondary Care, Consultant

4. Information and research

Access to information (Macro-)

There was a broad understanding amongst those delivering the service of the need to capture appropriate data to demonstrate the worth of the SCZ to patients and the health and social care system. There was also agreement that any evaluation should not focus solely on outcome but also explore the process and methods of working and how they might be replicated at scale. Either way, because of the novelty of the service they felt that data should be collected over a longer time scale, allowing the service to reach a degree of maturity and stability:

“...it takes time to embed the service or clinicians to get used to changing their patterns of referral patterns and things, and having confidence and trust in the new service...So that’s why I say it needs more time to be evaluated and given time to come to fruition.”

P06, Primary Care, GP

Discussion

Summary of findings

The domains of the SELFIE framework have enabled structured insight into the complex influences informing the delivery of place-based integrated health and social care. Related to *Leadership & Governance* participants described the importance of supportive and accessible leadership and the gap between structural integration at system level and the lack of practical support for delivering a unified service in real-world environments; Regards implications for the *Workforce*, staff described training received to help them understand all elements of the service and the need for administrative staff; In relation to *Finance* the complexity of negotiating with multiple employers and funding sources to secure staff was described, alongside suggestions for how investment in integrated services might be encouraged; finally, in relation to *Information and research*, the need for a lengthier period of evaluation that extends beyond early instability to use more reliable and comparable data was described.

Strengths and Limitations

Participants were representative of the organisations involved in delivering the service and though their number (n=14) was lower than anticipated, the majority of active staff were interviewed, highlighting the issues in recruiting and funding staff in the early phases of the SCZ. Not every element of the SELFIE was identified in our data set though the comprehensive nature of the framework meant that it accommodated all of our data. The progress with the analysis was shared across the team (53). The next phase of the work will focus on patient experience and outcomes.

Specific findings

Leadership & Governance

The latest research across multiple industries recommends diminished, hierarchical distinctions between managers and employees (56-58). However, despite the healthcare industry's characteristic multi-professionality, its structure remains typically hierarchical with power focused on a handful of groups that risks compromising teamwork and patient safety (59-61). In contrast we heard how senior SCZ leads created a work culture that promoted shared learning and decision making which as has been previously associated with increased job satisfaction and greater mutual respect among disciplines (62, 63). Similarly the collective leadership demonstrated by senior SCZ, characterised by their shared goals and responsibilities has been linked with improved healthcare outcomes and sustainable collaborative relationships (64-67).

In the UK the broad policy goals of better integrated health and social care have existed for decades (68). These have tended to focus on high-level processes such as integrated commissioning, strategic planning and financing and the creation of joint boards, forums and committees (16, 68, 69). What was apparent from our data was the lack of supporting infrastructure, and administrative process necessary to support front-line integration. In other health systems such as in the United States standardized care coordination protocols are common across programs that bridge health care and social services (70). The absence of similar in the UK may in part be due to the variable and *ad hoc* nature of many localised

integrated care offers precluding the generation of shared learning and development of national guidelines (20). It appears time to address this omission and for policymakers to reflect on the practicalities of delivering integrated care at local level and how existing systems might be adapted in their support (71, 72).

One element of delivering integrated services that is better understood is the involvement of people and communities, particularly those most vulnerable or seldom heard in the design of the service (73). Senior leads at the SCZ undertook and learnt from an extensive programme of community consultation. This “meaningful, and trusted” engagement is stipulated in the statutory guidance for Integrated Care Boards and is considered best-practice in developing place-based partnerships (74, 75).

Workforce

Staff described the training received in preventative care and the value of observing consultations delivered by colleagues from different sectors (50). Similar observational training techniques have been employed in other healthcare environments where they have helped students build competencies in inter-professional collaborative practice (33, 76-78), and improved understanding and respect for healthcare professionals from other sectors (33, 79, 80). Specifically in support of integrated care in the UK, the NHSE has developed a number of training initiatives to support cross-discipline collaboration (25, 35, 81, 82), including training in collaborative leadership (32, 83).

It appeared clinicians devoted their own time to fulfil their responsibilities to the SCZ, reflective of broader workforce shortages in the NHS (84). The need for cost-effective alternatives to support busy clinicians was voiced and the NHS has introduced the Additional Roles Reimbursement Scheme (ARRS) to develop non-clinical roles, such as social prescriber or care navigator intended to extend the skill mix within the GP team, but which also have the potential to usefully augment an integrated care service such as the SCZ (85-87). However, the latest evidence suggests the ARR scheme is failing to reduce the burden on primary care staff and more work is needed to understand how these additional roles might be better accommodated and utilized (85, 88).

Administration in healthcare

In relation to non-clinical roles, participants described the need for dedicated administrative support, recognised as a key element in successfully delivering integrated care (89, 90). Not only can patient facing roles support access (91, 92) but the importance of back-office support was underestimated, particularly in the absence of mechanisms to readily manage staff drawn from multiple organisations (70, 90). Instead, many of these administrative duties became another demand on overly burdened clinical staff, likely inhibiting the efficiency of the service (93, 94).

Finance

Over the last decade funding has decreased across the NHS, social care, and public health (51, 95, 96), and yet integrated services are expected to provide high quality health and social care

that also effectively addresses the social determinants of health (for less cost) (97). In this financially constrained environment it has been recommended that funding models are created to share financial risk and reward, and accountability across all sectors (98-102), moving away from existing single-condition, target driven incentives that currently predominate (103, 104). Ideally this funding in health and social care would be allied with investment in determinants such as housing, or food insecurity (97, 105-107). Despite these high level recommendations and assurances SCZ still found itself competing for future funds with other services within their local ICS and impacted by a lack of funding for social care and unexpected cuts to integrated care board running costs (108). Where investment in integrated care has been committed over the longer term the benefits of collaborative, place-based programmes such as the UK's Sure Start are seen and realised (109).

Information and research

Iterative cycles of organisational and structural reform have failed to stimulate the desired changes in behaviours and investment necessary to integrate services on the front line due in part to a lack of evidence demonstrating clear benefit or identifying best practice (20). Participants understood the importance for robust data collection and evaluation, though were aware of the tensions between the SCZ's aim of long-term improvement and the short-term context of its implementation, (110-112). The need to demonstrate near immediate benefit is not unique to integrated services but the complexity of their offer means they require longer to become embedded (113-115).

Demonstrating benefit is also hindered by the difficulties in collectively measuring a range of interacting health outcomes, outputs of preventative care, and social care and support and a lack of available comparable data against which to assess change (116). Perhaps because of this, and the exaggerated influence of secondary care trusts, previous attempts at evaluating the impact of integrated care have been over reliant on hospital-based measures failing to capture the impact on health and social care (117). It's important that those funding integration initiatives understand where and how the mechanisms of integration create improved outcomes and the timescales within which they might be observed (116, 117).

Implications for practice/conclusions

Despite closer integration being considered as the future for health and social care, the ability to deliver place-based integrated care was inhibited by uncertainty around dedicated funding, and a lack of supporting process and infrastructure. However, there are positive elements that emerged from the SCZ that could be usefully adopted more broadly, including observational training, flattened hierarchies, meaningful community engagement and an open collaborative culture.

Reference List

1. Roos LL, Wall-Wieler E, Lee JB. Poverty and Early Childhood Outcomes. *Pediatrics*. 2019.
2. Bonevski B, Randell M, Paul C, Chapman K, Twyman L, Bryant J, et al. Reaching the hard-to-reach: a systematic review of strategies for improving health and medical research with socially disadvantaged groups. *BMC medical research methodology*. 2014;14(1):1-29.
3. Research NIhH. Improving inclusion of under-served groups in clinical research: Guidance from the NIHR INCLUDE project. 2020.
4. Chopra M, Sharkey A, Dalmiya N, Anthony D, Binkin N, Unicef Equity in Child Survival H, et al. Strategies to improve health coverage and narrow the equity gap in child survival, health, and nutrition. *Lancet*. 2012;380(9850):1331-40.
5. Halfon N, Russ SA, Kahn RS. Inequality and child health: dynamic population health interventions. *Curr Opin Pediatr*. 2022;34(1):33-8.
6. WHO statement-by-the-malaria-policy-advisory-group-on-the-urgent-need-to-address-the-high-prevalence-of-pfhrp2-3-gene-deletions-in-the-horn-of-africa-and-beyond.
7. Gilliland JA, Shah TI, Clark A, Sibbald S, Seabrook JA. A geospatial approach to understanding inequalities in accessibility to primary care among vulnerable populations. *PLoS One*. 2019;14(1):e0210113.
8. Wolfe I, Forman J, Cecil E, Newham J, Hu N, Satherley R, et al. Effect of the Children and Young People's Health Partnership model of paediatric integrated care on health service use and child health outcomes: a pragmatic two-arm cluster randomised controlled trial. *The Lancet Child & Adolescent Health*. 2023;7(12):830-43.
9. Bird C, Harper L, Muslim S, Yates D, Litchfield I. Exploring the impact of integrated health and social care services on child health and wellbeing in underserved populations: a systematic review. *medRxiv*. 2024:2024.01.05.24300706.
10. Ruiz Escobar E, Pathak S, Blanchard CM. Screening and Referral Care Delivery Services and Unmet Health-Related Social Needs: A Systematic Review. *Prev Chronic Dis*. 2021;18:E78.
11. Organisation WH. WHO (2020b), People-Centred and Integrated Health Services: An Overview of the Evidence, . 2020.
12. Organisation WH. People-Centred and Integrated Health Services: An Overview of the Evidence, 2020.
13. Nandyal S, Strawhun D, Stephen H, Banks A, Skinner D. Building trust in American hospital-community development projects: a scoping review. *Journal of community hospital internal medicine perspectives*. 2021;11(4):439-45.
14. Alley DE, Asomugha CN, Conway PH, Sanghavi DM. Accountable health communities—addressing social needs through Medicare and Medicaid. *New England Journal of Medicine*. 2016;374(1):8-11.
15. Anderson M, Pitchforth E, Edwards N, Alderwick H, McGuire A, Mossialos E. United Kingdom: health system review. 2022.
16. Marmot M. Health equity in England: the Marmot review 10 years on. *Bmj*. 2020;368.
17. Dahlgren G, Whitehead M. The Dahlgren-Whitehead model of health determinants: 30 years on and still chasing rainbows. *Public health*. 2021;199:20-4.
18. de Matos RC, do Nascimento G, Fernandes AC, Matos C. Implementation and impact of integrated health and social care services: an umbrella review. *Journal of Public Health Policy*. 2024;45(1):14-29.
19. Enticott J, Johnson A, Teede H. Learning health systems using data to drive healthcare improvement and impact: a systematic review. *BMC health services research*. 2021;21(1):1-16.
20. Reed S, Oung C, Davies J, Dayan M, Scobie S. Integrating health and social care. Nuffield Trust: London, UK. 2021.
21. Arora A, Wright A, Cheng M, Khwaja Z, Seah M. Innovation Pathways in the NHS: An Introductory Review. *Therapeutic Innovation & Regulatory Science*. 2021:1-14.

22. Wilson P, Billings J, MacInnes J, Mikelyte R, Welch E, Checkland K. Investigating the nature and quality of locally commissioned evaluations of the NHS Vanguard programme: an evidence synthesis. *Health Research Policy and Systems*. 2021;19(1):63.
23. Maniatopoulos G, Hunter DJ, Erskine J, Hudson B. Lessons learnt from the implementation of new care models in the NHS: a qualitative study of the North East Vanguards programme. *BMJ Open*. 2019;9(11):e032107.
24. Gullery C, Hamilton G. Towards integrated person-centred healthcare—the Canterbury journey. *Future Hospital Journal*. 2015;2(2):111.
25. England N. Integrated care systems. NHS. [www. england. nhs. uk/integratedcare/integrated-care-systems](http://www.england.nhs.uk/integratedcare/integrated-care-systems) [Accessed ...; 2020].
26. Toh CH, Haynes R. The Health and Care Act 2022: challenges and priorities for embedding research in the NHS. *The Lancet*. 2022;400(10349):343-5.
27. Health Do, Care S. Integration and Innovation: working together to improve health and social care for all. The Department of Health and Social Care's legislative proposals for a Health and Care Bill: Department of Health and Social Care; 2021.
28. McCartney M. Margaret McCartney: Breaking down the silo walls. *Bmj*. 2016;354.
29. Collins B. Adoption and spread of innovation in the NHS. London: The Kings Fund. 2018.
30. Salisbury H. Helen Salisbury: Climbing out of our silos. *BMJ*. 2020;371:m3875.
31. King O, Shaw N. '... breaks down silos': allied health clinicians' perceptions of informal interprofessional interactions in the healthcare workplace. *Health Sociology Review*. 2021:1-17.
32. Aufegger L, Alabi M, Darzi A, Bicknell C. Sharing leadership: current attitudes, barriers and needs of clinical and non-clinical managers in UK's integrated care system. *BMJ Leader*. 2020:leader-2020-000228.
33. Shafran DM, Richardson L, Bonta M. A novel interprofessional shadowing initiative for senior medical students. *Medical teacher*. 2015;37(1):86-9.
34. Health Education England. *The Future of Primary Care*. 2019.
35. Improvement N. Evidence from NHS improvement on clinical staff shortages. A workforce analysis Updated. 2016.
36. Charlesworth A, Watt T, Gardner T. Returning NHS waiting times to 18 weeks for routine treatment. The Health Foundation. 2020.
37. Curry N, Harris M, Gunn LH, Pappas Y, Blunt I, Soljak M, et al. Integrated care pilot in north-west London: a mixed methods evaluation. *Int J Integr Care*. 2013;13:e027.
38. Satherley RM, Lingam R, Green J, Wolfe I. Integrated health Services for Children: a qualitative study of family perspectives. *BMC Health Serv Res*. 2021;21(1):167.
39. Dutton F, , Wolhuter C, , Kaur S, , et al. 1066 A proposed pilot to integrate health and social care to tackle child inequality: the Sparkbrook Children's Zone, Birmingham. 2022:A56-A.
40. Litchfield I, Harper L, Abbas MS, Dutton F, Wolhuter C, Bird C. Staff experiences and perspectives of delivering an integrated child health and social care service in community settings: A qualitative exploration using the SELFIE framework. *medRxiv*. 2024:2024.10.03.24314613.
41. Organization WH. Framework for action on interprofessional education & collaborative practice. Geneva: WHO; 2010.[Internet]. 2010 [cited Jun/Jul 1, 2018]. 2010.
42. Council BC. Birmingham Health profiles: Hall Green Constituency. 2019.
43. Robinson OC. Sampling in interview-based qualitative research: A theoretical and practical guide. *Qualitative research in psychology*. 2014;11(1):25-41.
44. Elo S, Kyngäs H. The qualitative content analysis process. *Journal of advanced nursing*. 2008;62(1):107-15.
45. Assaroudi A, Heshmati Nabavi F, Armat MR, Ebadi A, Vaismoradi M. Directed qualitative content analysis: the description and elaboration of its underpinning methods and data analysis process. *Journal of research in nursing*. 2018;23(1):42-55.

46. Leijten FR, Struckmann V, van Ginneken E, Czypionka T, Kraus M, Reiss M, et al. The SELFIE framework for integrated care for multi-morbidity: development and description. *Health policy*. 2018;122(1):12-22.
47. Nelson HJ, , Angus B, , Munns A, , et al. Models, theoretical design and formal evaluation of integrated specialist community health service provision for the first 2000 days: a scoping review. 2023;13:e070042.
48. Birmingham City Council. Birmingham Family Hubs 2024 [Available from: https://www.birmingham.gov.uk/info/50295/family_hubs/2753/welcome_to_family_hubs].
49. Jones J, Barry MM. Factors influencing trust and mistrust in health promotion partnerships. *Global health promotion*. 2018;25(2):16-24.
50. The Children's Society. Pause Birmingham 2024 [Available from: <https://www.childrenssociety.org.uk/information/young-people/well-being/services/pause>].
51. Appleby J, Leng G, Marshall M. NHS funding for a secure future. *bmj*. 2024;384.
52. Romney AK, Weller SC, Batchelder WH. Culture as consensus: A theory of culture and informant accuracy. *American anthropologist*. 1986;88(2):313-38.
53. Sandelowski M. Rigor or rigor mortis: the problem of rigor in qualitative research. *Advances in nursing science*. 1993;16(2):1-8.
54. Morse J, Barrett M, Mayan M. Verification strategies for establishing reliability and validity in qualitative research-ejournals. *library-ualberta. ca*. 2002.
55. Slevin E, Sines D. Enhancing the truthfulness, consistency and transferability of a qualitative study: utilising a manifold of approaches. *Nurse Researcher (through 2013)*. 1999;7(2):79.
56. Schuster AS, Kanbach DK. Power and organizations: how organization types link to power relationships—a state of the field. *International Studies of Management & Organization*. 2024:1-23.
57. Alexy O. How flat can it get? From better at flatter to the promise of the decentralized, boundaryless organization. *Journal of Organization Design*. 2022;11(1):31-6.
58. Joseph J, Sengul M. Organization design: Current insights and future research directions. *Journal of Management*. 2024:01492063241271242.
59. Currie G, Lockett A. Distributing leadership in health and social care: concertive, conjoint or collective? *International Journal of Management Reviews*. 2011;13(3):286-300.
60. Green B, Oeppen R, Smith D, Brennan PA. Challenging hierarchy in healthcare teams—ways to flatten gradients to improve teamwork and patient care. *British Journal of Oral and Maxillofacial Surgery*. 2017;55(5):449-53.
61. Stocker M, Pilgrim SB, Burmester M, Allen ML, Gijsselaers WH. Interprofessional team management in pediatric critical care: some challenges and possible solutions. *Journal of multidisciplinary healthcare*. 2016:47-58.
62. Mackintosh N, Armstrong N. Understanding and managing uncertainty in health care: revisiting and advancing sociological contributions. *Sociology of Health & Illness*. 2020;42:1-20.
63. Noyes AL. Navigating the hierarchy: Communicating power relationships in collaborative health care groups. *Management Communication Quarterly*. 2022;36(1):62-91.
64. Silva JAM, Mininel VA, Agreli HF, Peduzzi M, Harrison R, Xyrichis A. Collective leadership to improve professional practice, healthcare outcomes and staff well-being. *Cochrane Database of Systematic Reviews*. 2022(10).
65. Janssens S, Simon R, Beckmann M, Marshall S. Shared Leadership in Healthcare Action Teams: A Systematic Review. *Journal of Patient Safety*. 2021;17(8).
66. Okpala P. Increasing access to quality healthcare through collaborative leadership. *International journal of healthcare management*. 2020.
67. Moore J, Elliott IC, Hesselgreaves H. Collaborative leadership in integrated care systems; creating leadership for the common good. *Journal of Change Management*. 2023;23(4):358-73.
68. Kaehne A, Birrell D, Miller R, Petch A. Bringing integration home: Policy on health and social care integration in the four nations of the UK. *Journal of Integrated Care*. 2017;25(2):84-98.

69. Spicer J. Integrated care in the UK: variations on a theme? *London Journal of Primary Care*. 2015;7(3):41-3.
70. Albertson EM, Chuang E, O'Masta B, Miake-Lye I, Haley LA, Pourat N. Systematic review of care coordination interventions linking health and social services for high-utilizing patient populations. *Population health management*. 2022;25(1):73-85.
71. Alderwick H, Hutchings A, Mays N. A cure for everything and nothing? Local partnerships for improving health in England. *bmj*. 2022;378.
72. Alderwick H, Hutchings A, Briggs A, Mays N. The impacts of collaboration between local health care and non-health care organizations and factors shaping how they work: a systematic review of reviews. *BMC Public Health*. 2021;21:1-16.
73. Mercer S, Henderson D, Huang H, Donaghy E, Stewart E, Guthrie B, et al. Integration of health and social care: necessary but challenging for all. *British Journal of General Practice*; 2021. p. 442-3.
74. Masterson D, Areskoug Josefsson K, Robert G, Nylander E, Kjellström S. Mapping definitions of co-production and co-design in health and social care: a systematic scoping review providing lessons for the future. *Health Expectations*. 2022;25(3):902-13.
75. England N. Working in partnership with people and communities: statutory guidance. *Care DoHS*. 2022.
76. Kusnoor AV, Stelljes LA. Interprofessional learning through shadowing: Insights and lessons learned. *Medical teacher*. 2016;38(12):1278-84.
77. Kramers S. Shadowing as a technique for leadership development for healthcare professionals: a qualitative study 2018.
78. Rosen L, Mahon JN, Murdock S, Moran C, Buckley K. Off to the right start: A model for developing collaboration with nurses early in medical school. *Medical Science Educator*. 2013;23(3):513-23.
79. Houston JF, Morgan JE. Paired learning—improving collaboration between clinicians and managers. *Journal of health organization and management*. 2018.
80. Rimmer A. NHS England workforce plan fails to tackle staff shortages, say health leaders. *British Medical Journal Publishing Group*; 2020.
81. Akehurst J, Stronge P, Giles K, Ling J. Making a difference: workforce skills and capacity for integrated care. *Journal of Integrated Care*. 2021.
82. Improvement N. Developing people improving care: one year on. 2018.
83. Fund TK. Building Collaborative Leadership Across Health and Care Organisations 2024 [Available from: <https://www.kingsfund.org.uk/leadership-development/courses/building-collaborative-leadership#:~:text=The%20Building%20Collaborative%20Leadership%20programme%20will%20help%20you%20develop%20new,of%20the%20health%20care%20system>].
84. Anandaciva S. How does the NHS compare to the health care systems of other countries. The King's Fund,(June 2023), available at: <https://www.kingsfund.org.uk/publications/nhs-compare-health-care-systems-other-countries>. 2023.
85. Bramwell D, Hammond J, Warwick-Giles L, Bailey S, Checkland K. Implementing the Additional Roles Reimbursement Scheme in 7 English PCNs: a qualitative study. *Br J Gen Pract*. 2023.
86. NHSE. Health and Wellbeing Coaches 2022 [Available from: <https://www.england.nhs.uk/personalisedcare/workforce-and-training/health-and-wellbeing-coaches/>].
87. England N. NHS long term workforce plan. NHS England, London[Google Scholar]. 2023.
88. Jones B, Anchors Z, Voss S, Walsh N. A qualitative investigation of the Additional Roles Reimbursement Scheme in primary care. *Br J Gen Pract*. 2024.
89. Focus on NHS Admin is needed to improve people's experiences of care [press release]. 2021.
90. Ewbank L, Lamming L, Cream J, Wenzel L. Admin matters: the impact of NHS administration on patient care. 2021.

91. Christensen J, Aarøe L, Baekgaard M, Herd P, Moynihan DP. Human capital and administrative burden: The role of cognitive resources in citizen-state interactions. *Public Administration Review*. 2020;80(1):127-36.
92. Litchfield I, Gale N, Burrows M, Greenfield S. "You're only a receptionist, what do you want to know for?": Street-level bureaucracy on the front line of primary care in the United Kingdom. *Heliyon*. 2023;9(11).
93. Apaydin E. Administrative Work and Job Role Beliefs in Primary Care Physicians: An Analysis of Semi-Structured Interviews. *Sage Open*. 2020;10(1):2158244019899092.
94. Guidolin K. Junior doctors are burdened with clinical admin because it's dull and monotonous. *BMJ*. 2022;377:o1373.
95. Bottery S WD. 'Social care 360: expenditure'. 2021 [Available from: www.kingsfund.org.uk/publications/social-care-360/expenditure].
96. The Kings Fund. Spending on public health 2021 [Available from: www.kingsfund.org.uk/projects/nhs-in-a-nutshell/spending-public-health].
97. Buzelli L, Dunn P, Scott S, Gottlieb L, Alderwick H. A framework for NHS action on social determinants of health. Health Foundation. 2022.
98. Mason A, Goddard M, Weatherly H, Chalkley M. Integrating funds for health and social care: an evidence review. *Journal of health services research & policy*. 2015;20(3):177-88.
99. Health Do, Care S. Health and social care integration: joining up care for people, places and populations. 2022.
100. NHS Confederation. The role of primary care in integrated care systems. 2021.
101. Fuller K. Next steps for integrating primary care: Fuller stocktake report. 2022.
102. Mandavia R, Mehta N, Schilder A, Mossialos E. Effectiveness of UK provider financial incentives on quality of care: a systematic review. *British Journal of General Practice*. 2017;67(664):e800-e15.
103. Digital N. Quality and Outcomes Framework (QOF), enhanced services and core contract extraction specifications (business rules) [Available from: <https://digital.nhs.uk/data-and-information/data-collections-and-data-sets/data-collections/quality-and-outcomes-framework-qof>].
104. Jenkins P, Maheswaran A. Payments Systems in the NHS. *FFF Clinical Finance Journal*. 2020;1(1):25-33.
105. Buck D. Local action on health inequalities: understanding the economics of investments in the social determinants of health. London: Public Health England. 2014.
106. Giles-Corti B, Lowe M, Arundel J. Achieving the SDGs: Evaluating indicators to be used to benchmark and monitor progress towards creating healthy and sustainable cities. *Health Policy*. 2020;124(6):581-90.
107. Mark Sandford. 2022. Available from: <https://www.bennettinstitute.cam.ac.uk/blog/wider-determinants-of-health-1/>.
108. Confederation N. The state of integrated care systems 2022/23: Riding the storm. accessed; 2023.
109. Carneiro P, Cattan S, Ridpath N. The short-and medium-term impacts of Sure Start on educational outcomes: Institute for Fiscal Studies; 2024.
110. Hughes G, Shaw SE, Greenhalgh T. Rethinking integrated care: a systematic hermeneutic review of the literature on integrated care strategies and concepts. *The Milbank Quarterly*. 2020;98(2):446-92.
111. Guthrie B, Gillies J, Calderwood C, Smith G, Mercer S. Developing middle-ground research to support primary care transformation. *British Journal of General Practice*; 2017. p. 498-9.
112. Lewis RQ, Ling T. Integrated care pilots in England revisited. *Journal of Integrated Care*. 2020;28(1):7-13.
113. Skivington K, Matthews L, Simpson SA, Craig P, Baird J, Blazeby JM, et al. A new framework for developing and evaluating complex interventions: update of Medical Research Council guidance. *bmj*. 2021;374.
114. Clarke GM, Conti S, Wolters AT, Steventon A. Evaluating the impact of healthcare interventions using routine data. *Bmj*. 2019;365:l2239.

115. Ogrinc G, Dolansky M, Berman AJ, Chambers DA, Davies L. Different approaches to making and testing change in healthcare. *BMJ*. 2021;374.
116. Voices N. Reform for People: A joint vision for integrating care.

National Voices 2021 [Available from: www.nationalvoices.org.uk/publications/our-publications/reform-people-joint-vision-integrating-care].

117. Cameron A, Lart R, Bostock L, Coomber C. Factors that promote and hinder joint and integrated working between health and social care services: a review of research literature. *Health & social care in the community*. 2014;22(3):225-33.