

SUPPORTING INFORMATION 10. RESULTS SYNTHESIS FOR OUTCOMES ASSESSED AT MEDIUM AND LONG FOLLOW-UP

In summary, the findings based on follow-up data suggest that cognitive-behavioural therapy (CBT) and dialectical behavioural/acceptance and commitment therapies (DBT/ACT) versus inactive/nonspecific comparators, CBT plus abstinence- versus attendance-based contingency management (CM), and community reinforcement versus other interventions, may benefit some abstinence outcomes several months post-treatment. Detailed results are presented below. Numbering of figures is specific to this Supporting Information document. References relating to this Supporting Information are included at the end of this document.

Point abstinence

Six studies assessed point abstinence at medium term follow-up.¹⁻⁶ Medium follow up times ranged from 2 to 6 months post-treatment. Meta-analyses included a maximum of two studies per comparison (Figure 1). The common between-study variance, τ^2 , across comparisons was estimated as 0.00 (standard error, SE=0.49). CBT (odds ratio, OR=2.29, 95% confidence interval, CI [0.78; 6.69]) and DBT/ACT (OR=5.19 [1.83; 14.67]) relative to inactive/nonspecific comparators, as well as CBT plus CM-abstinence relative to CBT plus CM-attendance (OR=3.93 [1.57; 9.82]), may increase point abstinence at medium follow-up. However, we note that CIs are very wide, and for CBT are consistent with both an increase and decrease in point abstinence. CBT plus CM-abstinence may result in a reduction in point abstinence compared with CBT alone (OR=0.62 [0.21; 1.88]), although the CIs are consistent with both an increase and decrease in point abstinence.

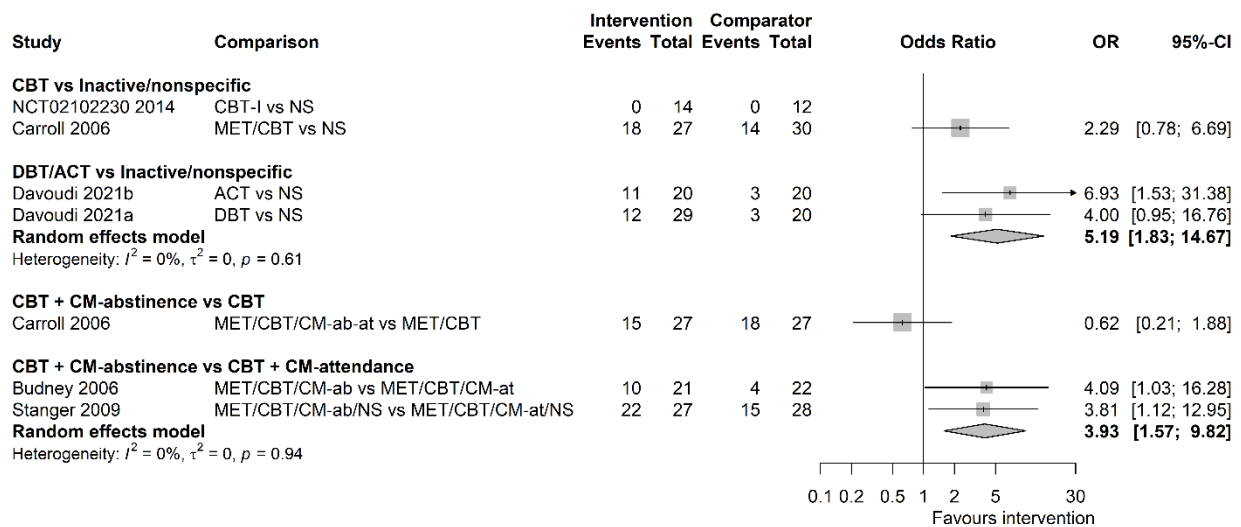


Figure 1. Forest plot for random-effects meta-analyses of point abstinence at medium follow-up. ACT, acceptance and commitment therapy; CBT, cognitive-behavioural therapy; CBT-I, CBT for insomnia; CI, confidence interval; CM-ab/at, contingency management based on abstinence/attendance; DBT, dialectical behavioural therapy; MET, motivation enhancement therapy; NS, nonspecific comparator; OR, odds ratio.

Figure 2 presents the findings from a meta-analysis of two studies for point abstinence at long term follow-up that ranged from 9 to 12 months post-treatment.^{5,6} The common τ^2 was estimated as 0.00 (SE=0.5). CBT plus CM-abstinence may increase abstinence relative to CBT plus CM-attendance (OR=2.55 [1.12; 5.81]).

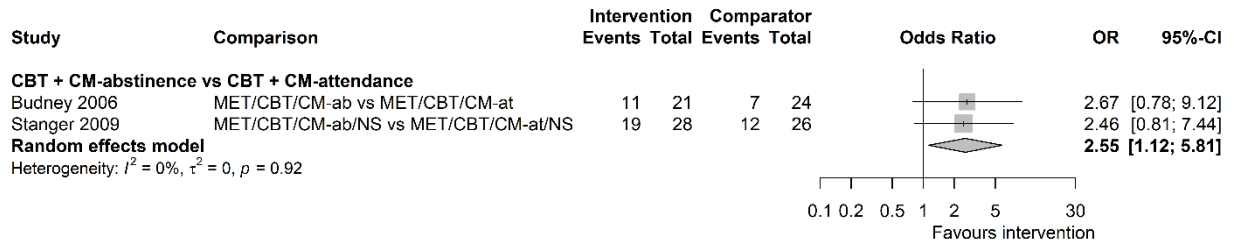


Figure 2. Forest plot for random-effects meta-analysis of point abstinence at long follow-up. CBT, cognitive-behavioural therapy; CI, confidence interval; CM-ab/at, contingency management based on abstinence/attendance; MET, motivation enhancement therapy; NS, nonspecific comparator; OR, odds ratio.

Continuous abstinence

Eight studies assessed rates of continuous abstinence at medium follow-up,^{2,5,7-12} mostly at six months post-treatment (with a single study measuring abstinence at 4.5 months post-treatment). Continuous abstinence was measured over 1-6 months (median=3 months) prior to the follow-up assessment. Meta-analyses included a maximum of four studies per comparison (Figure 3). The common τ^2 across comparisons was estimated as 0.37 (SE=0.39). There may be a favourable effect of CBT plus CM-abstinence over CBT plus CM-attendance (OR=2.85 [0.87; 9.30]), however CIs are consistent with both an increase or decrease in abstinence. For CBT relative to inactive/nonspecific comparators there was little to no evidence of a meaningful effect and CIs are also consistent with both an increase or decrease in abstinence (OR=1.87 [0.80; 4.35]). The same applies to the effect of CBT plus CM-abstinence versus CBT alone (OR=0.85 [0.36; 2.02]). For community reinforcement over nonspecific comparator there is evidence of an effect in favour of community reinforcement but CIs are very wide (OR=30.86 [10.27; 92.69]).

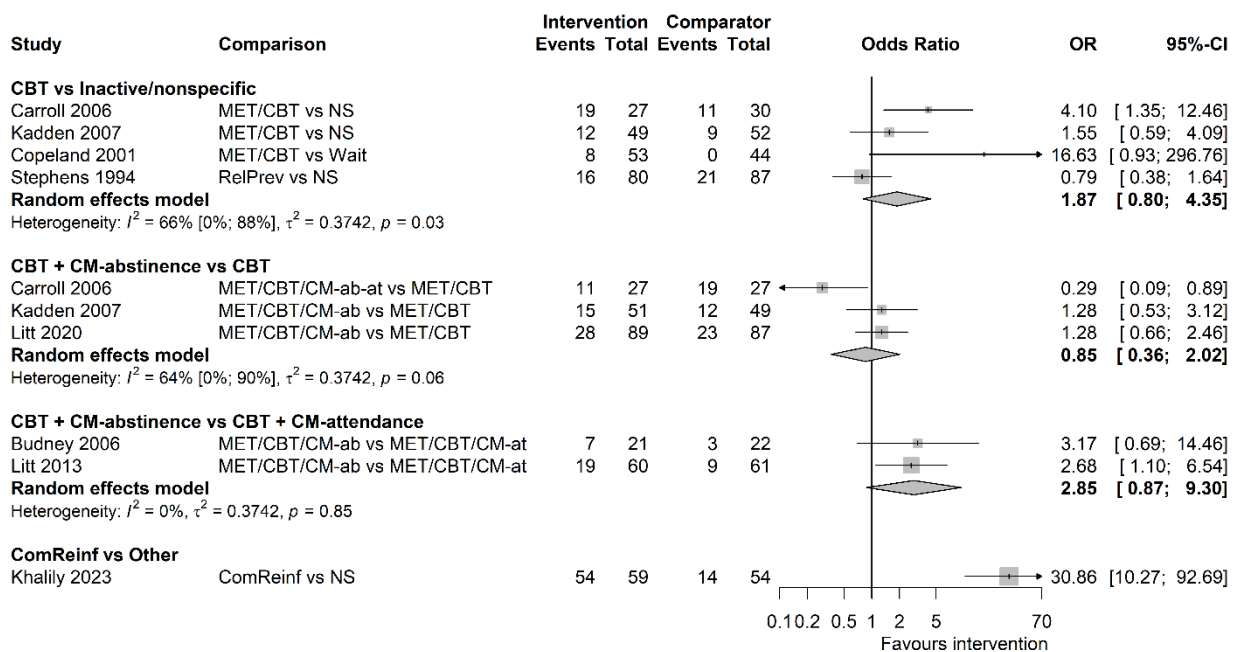


Figure 3. Forest plot for random-effects meta-analyses of continuous abstinence at medium follow-up. CBT, cognitive behavioural therapy; CI, confidence interval; CM-ab/at, contingency management based on abstinence/attendance; ComReinf, community reinforcement; MET, motivation enhancement therapy; NS, nonspecific comparator; OR, odds ratio; RelPrev, relapse prevention; Wait, waitlist

Six studies assessed continuous abstinence at long follow-up,^{5,7,9-12} five at 12 months post-treatment and one at 7.5 months post-treatment (Khalily 2023).¹² Continuous abstinence was measured over 1-12 months (median=5.25 months) prior to the follow-up assessment. Meta-analyses included a maximum of two studies per comparison (Figure 4). The common τ^2 across comparisons was 0.00 (SE=0.17). The effect of community reinforcement relative to a nonspecific comparator was favourable, suggesting an increase in continuous abstinence (OR=28.17 [9.72; 81.65]). For the remaining interventions the evidence suggests they may have little to no effect on continuous abstinence at long follow-up (CBT versus inactive/nonspecific comparators (OR=1.28 [0.67; 2.44]), CBT plus CM-abstinence versus CBT alone (OR=1.12 [0.66; 1.90]), and CBT plus CM-abstinence versus CBT plus CM-attendance (OR=1.69 [0.77; 3.70])).

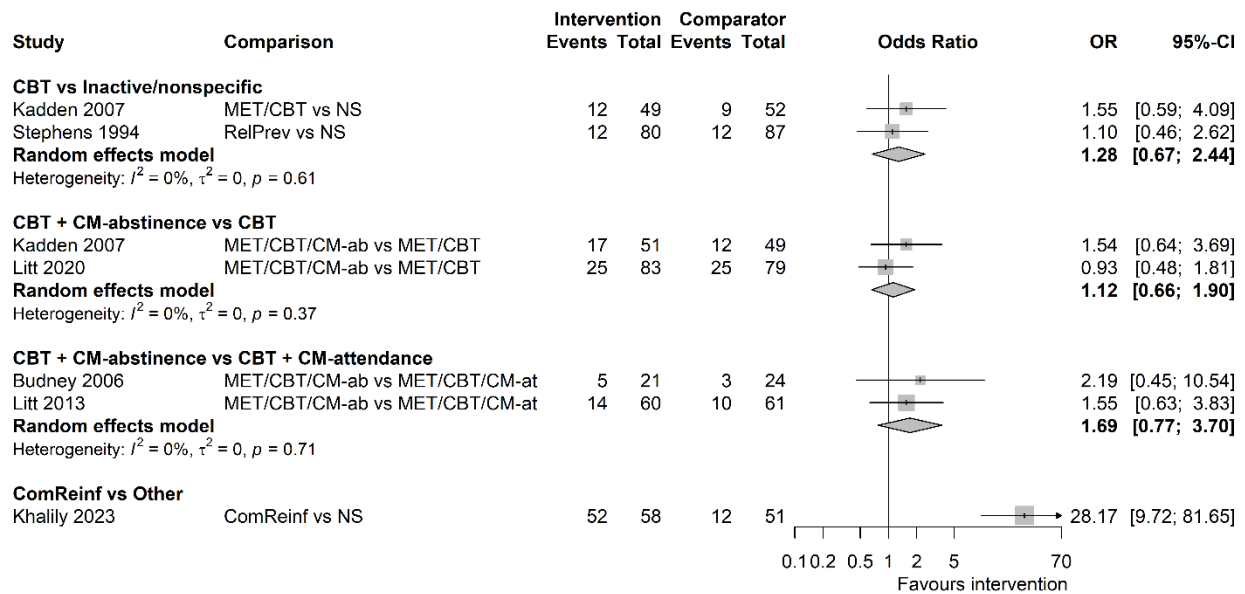


Figure 4. Forest plot for random-effects meta-analyses of continuous abstinence at long follow-up. CBT, cognitive-behavioural therapy; CI, confidence interval; CM-ab/at, contingency management based on abstinence/attendance; ComReinf, community reinforcement; MET, motivation enhancement therapy; NS, nonspecific comparator; OR, odds ratio; RelPrev, relapse prevention; Wait, waitlist

Duration of continuous abstinence

Eight studies reported mean duration of continuous abstinence within the treatment period lasting between 8 and 14 weeks (median=12 weeks), expressed either as number of weeks or days.^{2,5-7,10,11,13,14} Most used self-reported abstinence, but three studies determined abstinence by consecutive weekly² or twice-weekly^{5,14} negative urine tests. Meta-analyses shown in Figure 5 included up to five studies per comparison, with the common τ^2 across the comparisons estimated as 0.05 (SE=0.06).

There is very low certainty evidence that CBT relative to nonspecific comparators (ratio of means, RoM=1.24, 95% CI [0.70; 2.19]), CBT plus CM-abstinence relative to CBT alone (RoM=1.40 [1.02; 1.91]), and CBT plus CM-abstinence relative to CBT plus CM-attendance (RoM=1.31 [0.97; 1.77]), may have little to no effect on the duration of continuous abstinence over the treatment period.

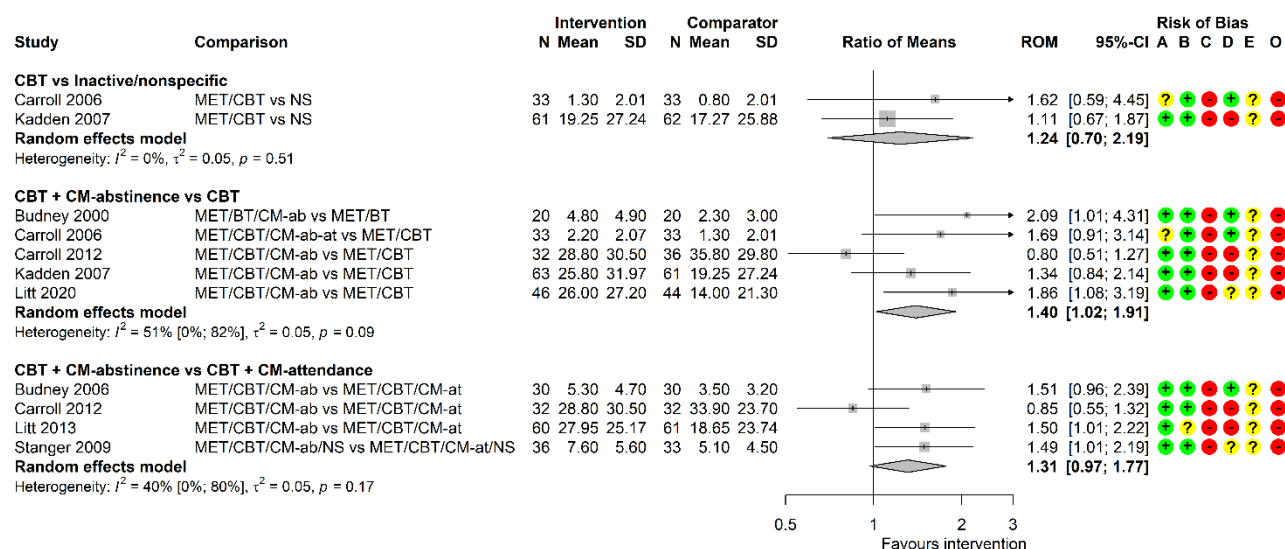


Figure 5. Forest plot for random-effects meta-analyses of duration of continuous abstinence at end of treatment. CBT, cognitive-behavioural therapy; CI, confidence interval; CM-ab/at, contingency management based on abstinence/attendance; MET, motivation enhancement therapy; N, number of participants; NS, nonspecific comparator; ROM, ratio of means, SD standard deviation.

Risk of bias (A) arising from the randomization process, (B) due to deviations from intended interventions, (C) due to missing outcome data, (D), in measurement of the outcome, (E) in selection of the reported result, (O) overall; '+', low risk, '?', some concerns, '-', high risk of bias.

No evidence was available for the duration of continuous abstinence at medium follow-up, however, a single study⁷ assessed self-reported longest number of days of abstinence over a 12 months follow-up period. As shown in Figure 6, CBT relative to a nonspecific comparator (RoM=1.08 [0.71; 1.65]), as well as CBT plus CM-abstinence relative to CBT alone (RoM=1.17 [0.77; 1.79]), may have little to no effect on the duration of continuous abstinence at long follow-up.

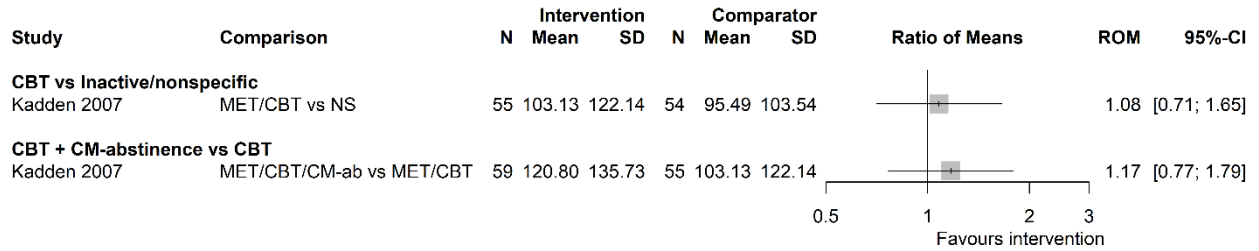


Figure 6. Forest plot for relative treatment effects on duration of continuous abstinence at long follow-up. CBT, cognitive-behavioural therapy; CI, confidence interval; CM-ab, contingency management based on abstinence; MET, motivation enhancement therapy; N, number of participants; NS, nonspecific comparator; ROM, ratio of means; SD, standard deviation.

Frequency of cannabis use

Fourteen studies reported frequency of cannabis use at medium follow-up.^{1-11,13,15,16} Follow-up ranged from 2 to 6 months (median=6 months). Frequency of use was self-reported, and ranged from 1 week to 6 months prior to the follow-up assessment (median=1 month). Meta-analyses shown in Figure 7 included up to five studies per comparison, with the common τ^2 across the comparisons estimated as 0.05 (SE=0.03). At medium follow-up, no intervention had a clinically meaningful effect on reducing frequency of cannabis use and CIs were consistent with both increase and decrease in frequency of cannabis use. CBT (RoM=0.94 [0.73; 1.22]) and DBT/ACT (RoM=0.54 [0.38; 0.75]) relative to inactive/nonspecific comparators, CBT-affect relative to CBT alone (RoM=1.28 [0.62; 2.63]), CBT plus CM-abstinence relative to CBT alone (RoM=1.03 [0.78; 1.35]), CBT plus CM-abstinence relative to CBT plus CM-attendance (RoM=0.87 [0.64; 1.19]), and multidimensional family therapy (MDFT) relative to CBT (RoM=0.80 [0.68; 0.95]).

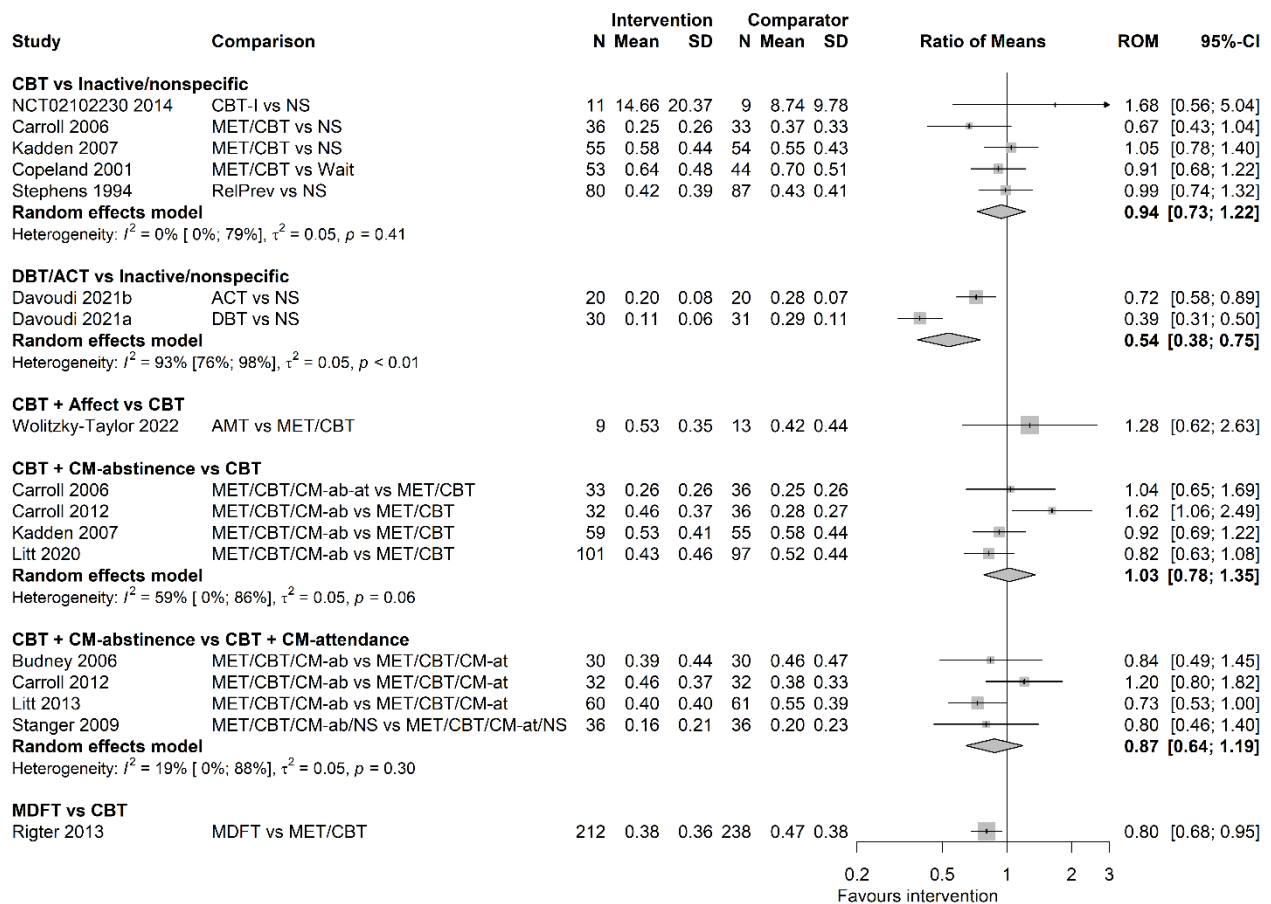


Figure 7. Forest plot for random-effects meta-analyses of frequency of cannabis use at medium follow-up. Frequency of use is expressed as proportion of days using for most studies, except for number of times used in the past 7 days in NCT02102230.

ACT, acceptance and commitment therapy; AMT, affect management therapy; CBT, cognitive-behavioural therapy; CBT-I, CBT for insomnia; CI, confidence interval; CM-ab/at, contingency management based on abstinence/attendance; DBT dialectical behavioural therapy; MDFT, multidimensional family therapy; MET, motivation enhancement therapy; N, number of participants; NS, nonspecific comparator; RelPrev, relapse prevention; ROM, ratio of means; SD, standard deviation; Wait, waitlist.

Seven studies reported frequency of cannabis use at long follow-up ranging from 9 to 13 months (median=12 months).^{5-7,9-11,13} Frequency of use was self-reported over 1 to 3 months prior to the follow-up assessment (median=3 months). Meta-analyses shown in Figure 8 included no more than four studies per comparison, with the common τ^2 across the comparisons estimated as <0.0001 (SE=0.02). At long follow-up, no intervention had a clinically meaningful effect, and probably had little to no effect on reducing frequency of cannabis use, including CBT relative nonspecific comparators (RoM=0.98 [0.81, 1.19]), CBT plus CM-abstinence versus CBT alone (RoM=0.97 [0.81; 1.17]), where CIs were consistent with both and increase and decrease in frequency of cannabis use, and CBT plus CM-abstinence versus CBT plus CM-attendance (RoM=0.80 [0.65; 0.98]).

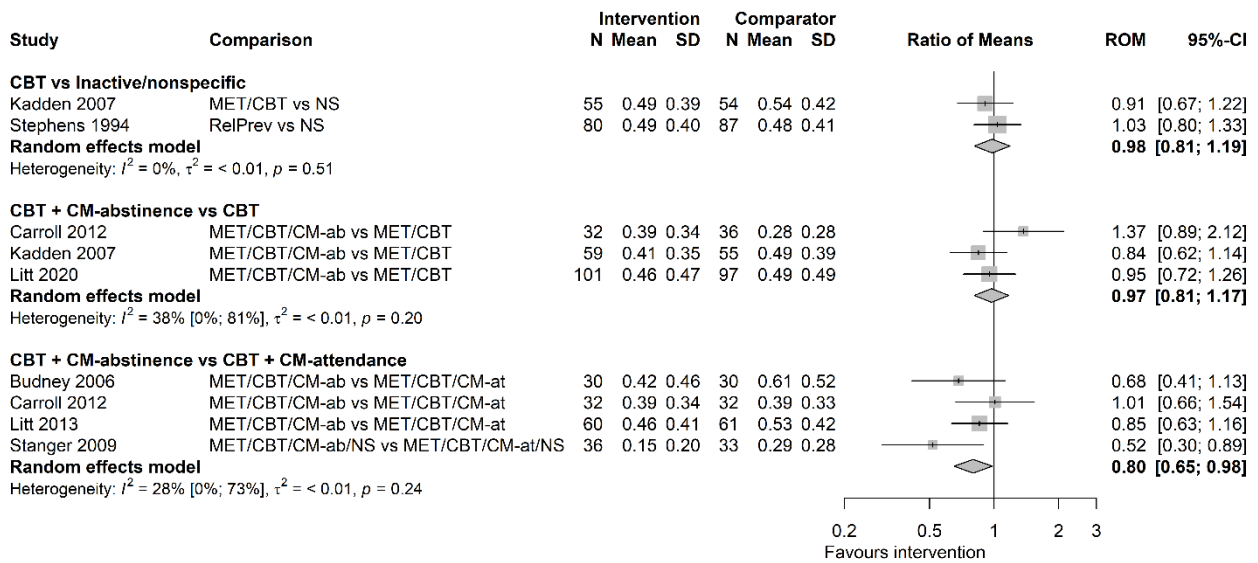


Figure 8. Forest plot for random-effects meta-analyses of frequency of cannabis use at long follow-up. Frequency of use is expressed as proportion of days using. CBT, cognitive-behavioural therapy; CI, confidence interval; CM-ab/at, contingency management based on abstinence/attendance; MET, motivation enhancement therapy; N, number of participants; NS, nonspecific comparator; RelPrev, relapse prevention; ROM, ratio of means; SD, standard deviation; Wait, waitlist.

Quantity of cannabis use

A single study⁸ measured quantity of cannabis used at medium 6-months follow-up, expressed as self-reported number of waterpipes (cones) smoked per day over three days prior to the assessment. The authors considered three cones to be equivalent to one joint. Results suggest that there is probably little to no difference in effect between CBT and a waitlist control for reducing quantity of use (RoM=0.61 [0.48; 0.76]).

Craving

One study³ reported craving at medium 2-months follow-up, measured with Marijuana Craving Questionnaire short-form. Results suggested that DBT may have little to no effect on reducing craving relative to a nonspecific comparator (RoM=0.93 [0.84; 1.03]).

References

1. NCT02102230. CBT-I for Cannabis Use. <https://clinicaltrials.gov/show/NCT02102230>. 2014.
2. Carroll KM, Easton CJ, Nich C, Hunkele KA, Neavins TM, Sinha R, et al. The use of contingency management and motivational/skills-building therapy to treat young adults with marijuana dependence. *Journal of Consulting and Clinical Psychology*. 2006;74(5):955-66.
3. Davoudi M, Allame Z, Foroughi A, Taheri AA. A pilot randomized controlled trial of dialectical behavior therapy (DBT) for reducing craving and achieving cessation in patients with marijuana use disorder: feasibility, acceptability, and appropriateness. *Trends in psychiatry and psychotherapy*. 2021;43(4):302-10.
4. Davoudi M, Taheri A, Foroughi A. Effectiveness of Acceptance and Commitment Therapy on Depression, Anxiety and Cessation in Marijuana Use Disorder: a Randomized Clinical Trial. *International journal of behavioral sciences*. 2021;15(3):194-200.
5. Budney AJ, Moore BA, Rocha HL, Higgins ST. Clinical trial of abstinence-based vouchers and cognitive-behavioral therapy for cannabis dependence. *Journal of Consulting and Clinical Psychology*. 2006;74(2):307-16.
6. Stanger C, Budney AJ, Kamon JL, Thostensen J. A randomized trial of contingency management for adolescent marijuana abuse and dependence. *Drug and Alcohol Dependence*. 2009;105(3):240-7.
7. Kadden RM, Litt MD, Kabela-Cormier E, Petry NM. Abstinence rates following behavioral treatments for marijuana dependence. *Addictive behaviors*. 2007;32(6):1220-36.
8. Copeland J, Swift W, Roffman R, Stephens R. A randomized controlled trial of brief cognitive-behavioral interventions for cannabis use disorder. *Journal of substance abuse treatment*. 2001;21(2):55-64.
9. Stephens RS, Roffman RA, Simpson EE. Treating adult marijuana dependence: a test of the relapse prevention model. *Journal of Consulting and Clinical Psychology*. 1994;62(1):92-9.
10. Litt MD, Kadden RM, Petry NM. Behavioral treatment for marijuana dependence: randomized trial of contingency management and self-efficacy enhancement. *Addictive behaviors*. 2013;38(3):1764-75.
11. Litt MD, Kadden RM, Tennen H, Petry NM. Individualized assessment and treatment program (IATP) for cannabis use disorder: randomized controlled trial with and without contingency management. *Psychology of addictive behaviors*. 2020;34(1):40-51.
12. Khalily MT, Hussain B, Hallahan B, Irfan S, Ehsan N, Saghir M, et al. Indigenously adapted community reinforcement approach (ia-cra) for cannabis users: A randomized controlled trial. *International Journal of Mental Health and Addiction*. 2023:1-12.
13. Carroll KM, Nich C, Lapaglia DM, Peters EN, Easton CJ, Petry NM. Combining cognitive behavioral therapy and contingency management to enhance their effects in treating cannabis dependence: less can be more, more or less. *Addiction*. 2012;107(9):1650-9.
14. Budney AJ, Higgins ST, Radonovich KJ, Novy PL. Adding voucher-based incentives to coping skills and motivational enhancement improves outcomes during treatment for marijuana dependence. *Journal of Consulting and Clinical Psychology*. 2000;68(6):1051-61.
15. Wolitzky-Taylor K, Glasner S, Tanner A, Ghahremani DG, London ED. Targeting maladaptive reactivity to negative affect in emerging adults with cannabis use disorder: a preliminary test and proof of concept. *Behaviour research and therapy*. 2022;150:104032.
16. Rigger H, Henderson CE, Pelc I, Tossmann P, Phan O, Hendriks V, et al. Multidimensional family therapy lowers the rate of cannabis dependence in adolescents: a randomised controlled trial in Western European outpatient settings. *Drug and Alcohol Dependence*. 2013;130(1):85-93.