

1 What incentives encourage local communities to collect and upload mosquito sound
2 data by using smartphones? A case study in the Democratic Republic of the Congo

3

4 Short Title: Incentives for citizen science data collection in the DRC

5

6 Kieran E. Storer^{1*}, Jane P. Messina², Eva Herreros-Moya¹, Emery Metelo^{3,4}, Josué Zanga⁴, Nono M.
7 Mvuama⁴, Soleil Muzinga⁴, Rinita Dam⁵, Marianne Sinka¹, Ivan Kiskin⁶, Josh Everett¹, Yunpeng Li⁷,
8 Stephen Roberts⁸, and Katherine J. Willis¹

9

10 Affiliations

11 ¹ Department of Biology, University of Oxford, Oxford, United Kingdom

12 ² School of Geography and the Environment, Oxford University Centre for the Environment,
13 University of Oxford, Oxford, United Kingdom

14 ³ Department of Entomology, National Institute for Biomedical Research, M8R2+4WX, Kinshasa,
15 Democratic Republic of the Congo

16 ⁴ Kinshasa School of Public Health, University of Kinshasa, H8Q3+2HV, Kinshasa, Democratic
17 Republic of the Congo

18 ⁵ Warwick Medical School, University of Warwick, Coventry United Kingdom

19 ⁶ Surrey Institute for People-Centred AI, Centre for Vision Speech and Signal Processing, University
20 of Surrey, Guildford, United Kingdom

21 ⁷ Centre for Oral, Clinical, and Translational Sciences, King's College London, London, United
22 Kingdom

23 ⁸ Department of Engineering Science, University of Oxford, Oxford, United Kingdom

24

25 *Corresponding Author

26

27 *Corresponding Author

28 E-mail: kieran.storer@biology.ox.ac.uk

29 Phone: +447851099304

30

31 Attribution

32 KES contributed to data curation, formal analysis, methodology, visualization, and writing the
33 original draft. JPM contributed to formal analysis and visualization. EHM contributed to
34 conceptualization, investigation, methodology, project administration, supervision, visualization,
35 and the review and editing of the manuscript. EM, JZ, NMM, and SM contributed to
36 conceptualization, investigation, methodology, data collection, and review and editing of the
37 manuscript. RD, MS, IK, JE, YL, and SR contributed to conceptualization, methodology, and review
38 and editing of the manuscript. KJW contributed to funding acquisition, methodology, supervision,
39 and the review and editing of the manuscript.

40

41 Funding

42 This study was funded by the Bill and Melinda Gates Foundation Grant Award Number:
43 OPP1209888.

44

45

46

47 Abstract

48 Malaria is one of the deadliest vector borne diseases effecting sub-Saharan Africa. A suite of
49 systems are being used to monitor and manage malaria risk and disease incidence, with an
50 increasing focus on technological interventions that allow private citizens to remotely record and
51 upload data. However, data collected by citizen scientists must be standardised and consistent if it
52 is to be used for scientific analysis. Studies that aim to improve data collection quality and quantity
53 have often included incentivisation, providing citizen scientists with monetary or other benefits for
54 their participation in data collection. We tested whether monetary incentives enhance participation
55 and data collection in a study trialling an acoustic mosquito sensor. Working with the community in
56 two health districts in the Democratic Republic of Congo, we measured data collection
57 participation, completeness, and community responses. Our results showed mixed responses to the
58 incentive, with more participants interested in the social status and monetary value of the
59 technology used than the monetary incentive itself. The effect of incentives on data collection
60 varied over the course of the trial, increasing participation in the start of the trial but with no effect
61 in the latter half of the trial. Feedback from participants showed that opinions on technology,
62 research objectives, and incentives varied between communities, and was associated with
63 differences in data collection quantity and quality, suggesting that differences in community
64 interest in data collection and the incentives may be more important than the incentive value itself.
65 These results suggest that though there is an initial benefit, extrinsic motivations do not override
66 differences in intrinsic motivations over time, and enhanced communication and dialogue with
67 participants may improve citizen science participation and attitudes.

68

69 Introduction

70 Mobile phone usage in sub-Saharan Africa reached 489 million users in 2023, with smartphones
71 making up 51% of mobile phones due to improvements in mobile phone access and network
72 connections (1–3). With increasing smartphone ownership, their use for citizen science data
73 collection has also increased in tandem, making use of the built-in camera, sensors, and GPS to
74 generate and record data (4–7). Citizen science projects have ranged widely, and have been
75 increasingly used in healthcare settings, including for monitoring diseases such as malaria by
76 tracking outbreaks, monitoring drug stocks, reminding patients of medical appointments, and
77 recording mosquito larval habitats and populations (for examples see: 8–15). As the amount and
78 type of data collected by private citizens increases there are opportunities for developing high-
79 resolution data repositories that widen citizen participation to include a greater range of
80 demographic groups.

81

82 Previous research on citizen science data collection has shown that gathering data for research or
83 healthcare purposes can help to improve educational outcomes (16), make data collectors feel
84 more connected to their community (17), and improve health outcomes (18). But how do
85 researchers motivate people to participate and collect high-quality data? Firstly, there is need to
86 understand the roles that intrinsic and extrinsic motivations play in citizen scientist participation
87 and data collection quality. Intrinsic motivation factors are 'people's spontaneous tendencies to be
88 curious and interested, to seek out challenges and to exercise and develop their skills and
89 knowledge, even in the absence of operationally separable rewards' (19). Intrinsic motivation is
90 influenced by local and regional cultures, education, and familial values (20). In contrast, extrinsic
91 motivators are 'behaviours done for reasons other than their inherent satisfactions' (21), such as
92 monetary gain (22). Efforts to improve data collection typically target these different motivation

93 factors. Studies have shown that monetary incentives can be used in health care and ecological
94 monitoring schemes to improve participation (23–27) and that intrinsic factors can be harnessed to
95 improve data collection participation and quality by improving learning opportunities and using
96 participant knowledge (28–31).

97

98 The complex spatiotemporal variability inherent to motivation factors (32,33) and the theoretical
99 potential for a trade-off between them (21) make understanding their influence essential to
100 improving data collection quality and scope while optimising resource allocation. To study
101 participants' motivations and assess the functionality of incentive applications to promote
102 community involvement in the collection of high-quality long-term biological data, we previously
103 ran a data collection trial using incentives and SMS text reminders for collecting mosquito audio
104 data in Tanzania using the HumBug tool (34). This tool is a smartphone audio sensor combined with
105 a modified bed net designed to temporarily trap mosquitoes and guide them towards a budget
106 smartphone running the MozzWear app that records the flight tone of host seeking mosquitoes
107 overnight to determine the abundance and diversity of mosquitoes present using their sound (35)
108 (Fig. 1).; For details on the Humbug tool, also see (36–42).

109

110 *Fig. 1: HumBug Tool configuration, showing the data collection, upload, and analysis pipeline (reproduced*
111 *from Sinka et al., 2021).*

112

113 The smartphone app MozzWear used in the HumBug tool records mosquito flight tone data
114 overnight and provides a secure connection to a server at the University of Oxford where the data
115 is uploaded via the mobile or Wi-Fi data network. The data then runs through an algorithm pipeline
116 that first detects the mosquito flight tone from background noise and then identifies the mosquito

117 species using their acoustic signature (35–37,40). As such, the HumBug tool is a good example of
118 using smartphone technologies to provide an accessible biological data collection methodology to
119 identify and monitor vectors of human disease - in this case, mosquitoes.

120

121 Previous work in Tanzania showed that providing homeowners with monetary incentives and SMS
122 reminders to record and upload mosquito data did not significantly increase the number of uploads
123 when compared to the control group (34). Instead, the study found that other factors influenced
124 data collection efforts. However, it did not examine in detail what these other factors might be. To
125 better understand, therefore, how extrinsic factors may affect data collection practices in the use of
126 the HumBug tool, we ran a second data collection trial in a different community within two districts
127 of the Democratic Republic of the Congo: Bandundu, and rural Kinshasa. In this study we aimed to
128 test whether monetary extrinsic incentives encouraged: i) participant data collection activity during
129 the trial period; ii) participant effort (the number of uploads per participant made during the
130 sampling period, indicative of following trial protocols); and iii) the persistence of participation over
131 time (whether trial participants continued to upload data throughout the sampling period). To
132 address these questions, we compared participant activity (weeks active) and sampling effort
133 (number of uploads) over the sampling period to assess differences in participation associated with
134 receiving incentives for data collection.

135 **Methods**

136 The study ran from April to November of 2022 in two districts of the Democratic Republic of the
137 Congo (DRC): rural Kinshasa, and Bandundu. Our collaborators at the University of Kinshasa and the
138 University of Bandundu selected participants, conducted demographic surveys and pre- and post-
139 trial focus group discussions, and ran the study. Data analysis and writing of the manuscript were
140 carried out by the University of Oxford team. All leaders of communities, health zone officials, and

141 participants provided signed consent forms for the study, and the study was approved by the
142 University of Oxford Tropical Research Ethics Committee and the University of Kinshasa Public
143 Health Ethics Committee.

144

145 Study Locations

146 Geographically, the DRC covers an area of approximately 2,345,409 km². The country is dominated
147 by the Congo River basin surrounded by high plateaus, resulting in high precipitation and thick
148 tropical forest within the basin and grassland in the plateaus above. In the DRC, malaria is a major
149 cause of illness and death. Worldwide, 12% of the total malaria cases occurred in the DRC in 2022,
150 causing 60% of hospital visits in the country (43,44).

151

152 Kinshasa is the capital city of the DRC and the largest city in central Africa. With ~16 million
153 population it is the third largest mega-city on the continent. The Bandundu district has a total of
154 143,435 people and covers an area of 222 Km² (Figure 2). Participants in our research were from
155 the Bu and Mikondo health districts of Kinshasa, and the Trois Rivières and Caravane health districts
156 of Bandundu.

157

158 *Fig. 2: Map of the Democratic Republic of Congo, showing the provinces of the DRC (45), the location of the*
159 *trial districts (46) showing Bandundu in purple and Kinshasa in orange, with red points showing the location*
160 *of study sites in the zoom inset, all visualised using QGIS 3.30.0 (47).*

161

162 Each district in our study had two trial sites: a control site and an incentive site. The selection of
163 participants from our four trial sites took place from April 2 to June 30, 2022. In each health district,
164 authorities of the different Health Zones, the village chiefs, and heads of districts were contacted to

165 gain permission for the study and to involve local leadership. Meetings with local leaders were
166 carried out to plan the recruitment of households for the study, and to allocate which health
167 districts would be the control treatment (Trois Rivières in Bandundu and Bu in Kinshasa) and the
168 incentive treatment (Caravane in Bandundu and Mikondo in Kinshasa). These health districts will
169 hereafter be referred to as a trial sites for clarity.

170

171 Households were recruited using a modified random walk technique from an entry point chosen
172 from the main entrances to the village/street selected by local health district officials. From the
173 entry point, the selection group progressed until the number of households required to participate
174 at the site was met. Trial participants were admissible if they were 18+ years old, owned or had
175 access to a personal mobile phone, were residents in Bandundu/Kinshasa throughout the study,
176 and were willing and capable of providing a signed consent form.

177

178 Ahead of the trial, training of the interviewers and moderators took place over a day in each of the
179 trial sites to teach local health officials and local leadership how to run interviews and support
180 participants in the trial. Demonstrators were also taught how to install and use the HumBug tool
181 and MozzWear App and were given a presentation of the trial objectives. Finally, interviewers were
182 trained on how to administer the demographic questionnaires to participants who agreed to take
183 part in the trial (DHS Phase 8 Questionnaire, S1 Appendix).

184 Moderators ran pre-trial focus group discussions (FGDs) to confirm that participants understood
185 the purpose of the study, how the study was designed, and how to operate the HumBug tool and
186 MozzWear application. The pre-trial FGDs were also used to discuss and understand the challenges
187 that participants may face, their motivations for taking part in the study, and what they thought the
188 impact would be on their lives. The pre- and post- trial FGD questions can be found in the S2

189 Appendix. The reasons participants gave for joining the study were categorized into common
190 themes of access to electricity, financial incentive, use of a phone, provision of bed nets,
191 contributing to health improvements and malaria control, or gaining personal knowledge.
192 Participant FGDs responses were then structurally coded for analysis (48).

193

194 Control group participants were provided with the HumBug tool (a smartphone running the
195 MozzWear app and the HumBug bed net), and one dollar to pay for an internet connection. The
196 incentive group was provided with the HumBug tool and one dollar for an internet connection, and
197 an additional ten dollars each month paid via airtime to their mobile phones. Participants were
198 instructed to place the smartphone with the MozzWear app in the HumBug net and start the record
199 function at 18:00 hrs and turn it off at 06:00 hrs on their allocated weekly recording day during the
200 trial period (16 weeks total). Recordings were split at one-hour intervals automatically in the
201 MozzWear app to prepare recordings for algorithmic analysis. As such a complete recording effort
202 would show 12 recordings. The recordings were then uploaded by participants to the remote server
203 when they connected to the internet. Once participants were taught how to use the Humbug tool
204 there was no contact between the research team and the participants.

205

206 The research team conducted post-trial FGDs to understand the participants' experience of using
207 the HumBug tool and participating in the study. Questions included whether they liked using the
208 MozzWear app, whether they liked using the HumBug net, how the trial personally affected them,
209 what they would want to be different about the trial in the future, whether they would participate
210 in the future, and if they received an incentive whether it was enough money. Data from the post-
211 trial FGDs was coded for analysis by themes of response to questions as described for the pre-trial
212 FGDs.

213

214 Data Analysis

215 To compare the effect of providing incentives to the participants to upload mosquito audio data,
216 the number of active participants (participants who uploaded any data) and the number of uploads
217 were counted during each trial week. Participant identification numbers were used to assess the
218 upload counts and weekly activity by location (Kinshasa or Bandundu districts) and experimental
219 group (control or incentive). Counts of uploads, weeks of participation, and the average number of
220 participants each week were compared using Wilcoxon Rank Sum tests (49) and Kruskal-Wallis tests
221 (50) with a post-hoc Dunn test (51) to assess if there was a significant difference in participation
222 between the experimental groups/locations over the study period. The number of participant
223 uploads was broken down for each week of the trial to assess whether incentives improved data
224 collection persistence throughout the study and was also compared using Wilcoxon Rank Sum
225 Tests. Data on income, sex, age, education, and profession were also evaluated as explanatory
226 variables to explain variation in data collection between groups. Comparisons of the demographic
227 data of each district, trial group, and combination of the two, were made using Wilcoxon Rank Sum
228 tests and Chi-squared tests. The pretrial FGD data was analysed using Wilcoxon Rank Sum tests to
229 compare differences in pre-trial motivations for participation. The post-trial FGD data was analysed
230 using a Fisher's Exact Test to assess the correlation between district and trial groups on attendance
231 for the post-trial FGD and whether participants would take part in a future trial, and phone return.
232 All plots were produced using ggplot2 (52).

233

234 Data management

235 Personal data generated in the form of signed consent forms, personal mobile phone numbers,
236 interviews, and/or focus group audio recordings, were stored following the 2018 Data Protection
237 Act on a secure administrative database on a University of Oxford server.

238

239 Results

240 Pre-Trial Focus Group Discussions

241 Pre-trial focus group discussions (FGDs) were run in three groups of 12-13 participants in each trial
242 site (37 people per trial site, 148 participants in total). In the pre-trial FGDs, themes identified for
243 participant motivation were monetary benefit (63.5% of all participants), contributing to
244 science/health (33.1%), having a phone (29.7%), electricity access (27.0%) (not a component of this
245 study), the HumBug net (6.7%), and gaining personal knowledge (5.4%). Statistical comparisons
246 using Wilcoxon Rank Sum Tests showed that trial site participants in Kinshasa mentioned electricity
247 significantly more as a reason to participate in the trial compared to Bandundu trial site participants
248 ($W = 3774$, $p\text{-value} < 0.001$). Comparing treatment groups across both districts, electricity access
249 was mentioned more frequently in the control groups compared to the incentive groups ($W = 2072$,
250 $p\text{-value} < 0.001$). Between the treatment groups in Bandundu, electricity was more frequently
251 mentioned by the control group (control $n=6$, incentive $n=0$; $W = 795.5$, $p\text{-value} = 0.012$) and
252 personal knowledge (on topics such as mosquito control and malaria prevention) was more
253 commonly cited by the incentive group (control $n=0$, incentive $n=4$; $W = 610.5$, $p\text{-value} = 0.042$). In
254 Kinshasa, the control group mentioned electricity (control $n = 23$, incentive $n = 11$; $W = 906.5$, $p\text{-}$
255 $\text{value} = 0.005$) and contributing to science/health (control $n = 15$, incentive $n = 6$; $W = 851$, $p\text{-value} =$

256 0.022) significantly more than the incentive group. There were no other significant differences
257 between districts, trial groups, or the trial groups within districts (p-value>0.05).

258

259 Demographic Survey

260 Demographic survey data were assessed to identify if they contributed to differences in recording
261 ability between districts, treatment groups, and treatment groups within districts. There were
262 significantly more adults in the homes of participants in the Kinshasa district sites compared to the
263 Bandundu district sites ($W = 1680$, p-value = 0.017). Between the treatment groups in both districts,
264 there were no significant differences in any demographic response variables. Within Kinshasa, there
265 was significantly less water scarcity in the control group (29% experiencing water scarcity), and
266 compared to the incentive group (45% experiencing water scarcity) (odds ratio = 0.09, p-value =
267 0.021) and there was a significant difference in the method of home lighting, with significantly
268 more homes in the control group using a rechargeable flashlight, torch, or lantern (p-value = 0.016).
269 Within Bandundu there were significantly more children in the incentive group compared to the
270 control group ($W = 675$, p-value = 0.024), with one more child per house in the study on average.
271 Additionally, there was a significant difference in toilet types between the Bandundu trial groups
272 (p-value = 0.033). These were the only cases out of 88 comparisons that were significantly different
273 between districts and trial groups (S3 Table).

274

275 Comparing Districts and Trial Groups

276 Some participants decided to withdraw from the trial during its course and others failed to upload
277 data, resulting in overall participation of 33 from the control group and 31 from the incentive group
278 in the Kinshasa districts (n=64), and 33 from the control group and 35 from the incentive group in

279 Bandundu districts (n=68), totalling 132 participants. The withdrawal rate from the study was 7.4%
280 from the control sites and 10.4% from incentive sites across both districts. The reasons cited for
281 formal withdrawal from the trial were lack of monetary benefit, unplanned move from the trial
282 area, and loss of the smartphone. Comparisons in participation between trial districts using
283 Wilcoxon Continuity tests showed that Bandundu participants uploaded data more weeks of the
284 trial period ($W = 1589$, $p < 0.001$) and had more total uploads ($W = 1825.5$, $p = 0.009$), than
285 participants in Kinshasa, shown in Figure 3.

286

287 *Fig. 3: Comparison of a) the total number of uploads per participant in Bandundu and Kinshasa and b) the*
288 *number of weeks that each participant was active in Bandundu and Kinshasa. Bandundu is shown in red, and*
289 *Kinshasa is shown in blue. Boxes show the interquartile range (IQR), with whiskers showing the upper and*
290 *lower 25% of the data, and points showing the outliers.*

291

292 Comparing treatment groups across both districts there was no difference in participation between
293 the control group and the incentive group for either total uploads ($W = 2409.5$, $p\text{-value} = 0.88$), or
294 participation weeks ($W = 2510.5$, $p\text{-value} = 0.79$). Within Kinshasa there was no significant
295 difference between treatment groups in either uploads ($W = 418.5$, $p\text{-value} = 0.057$) or weeks of
296 activity ($W = 428$, $p\text{-value} = 0.073$). In Bandundu, there were significantly more total uploads in the
297 control group compared to the incentive group ($W = 845.5$, $p\text{-value} = 0.026$) but no significant
298 difference in the average number of active weeks of each participant ($W = 777$, $p\text{-value} = 0.13$)
299 (Table 1). There were no significant relationships found between in the demographic variables that
300 were captured in the demographic questionnaire survey and the number of uploads or weeks of
301 activity.

302

303 Table 1: Results of the Mann Whitney-U Tests for the trial group comparisons, with * to denote significance,
 304 p -value < 0.05 *, p -value < 0.01 **.

Comparison	Response Variable	Group	Mann-Witney U	Median	IQR	P-Value	
District	Uploads	Kinshasa	W=1825.5	117.5	79.75-161.75	0.009486***	
		Bandundu		160	107-186		
	Weeks	Kinshasa	W=1589	11	8-14.25		
		Bandundu		15	12-16		
Treatment	Uploads	Control	W=2409.5	136	73-186	0.8822	
		Incentive		140	94.5-172.5		
	Weeks	Control	W = 2510.5	13	7-16		
		Incentive		13	10-15		
Bandundu	Treatment	Uploads	W=845.5	Control	180	122.25-193.5	0.02643*
				Incentive	149.5	91-177.75	
	Weeks	Control	W=777	16	12-16		
		Incentive		13.5	11.5-16		
Kinshasa	Treatment	Uploads	W=418.5	Control	99	62-164	0.05705
				Incentive	140	96.5-160	
	Weeks	Control	W=428	11	6-14		
		Incentive		12	10-14.5		

305

306

307 Activity and Effort over Time

308 Activity Persistence

309 The percentage of active participants was catalogued weekly to assess whether the monetary
 310 incentive affected persistence in data collection over the trial period (Fig. 4). At the start of the trial,
 311 the Kinshasa incentive group had the highest participation (87.1%), followed by the Bandundu
 312 incentive (83.3%), Bandundu control (80.5%), and Kinshasa control (70.3%). Participation was
 313 approximately stable for the first half of the trial before declining from week 8. At the end of the

314 trial both the Kinshasa control and Kinshasa incentive group had dropped to 30-35% participation,
315 Bandundu incentive dropped to 50% participation, and Bandundu control maintained 77.7%
316 participation.

317

318 *Fig. 4: The percentage of participants that activated the MozzWear app in each trial group during each week*
319 *in the trial. The coloured lines coordinate with trial groups, showing Bandundu control in orange, Bandundu*
320 *incentive in green, Kinshasa control in pink, and Kinshasa incentive in blue. Lines were fitted using locally*
321 *estimated scatterplot smoothing (LOESS), with the 95% confidence interval for each treatment group*
322 *indicated in grey.*

323

324 Data Collection Effort

325 Data collection effort over the trial showed that in the first week the Kinshasa incentive group had
326 the highest average uploads per active participant (12.26) followed by the Bandundu control
327 (11.69), Bandundu incentive (10.83), and Kinshasa control (10.54). Data collection effort declined at
328 around week seven, and at the end of the trial, the upload effort dropped for all groups, finishing in
329 descending order with Bandundu control (11.29), Bandundu incentive (10.39), Kinshasa incentive
330 (10.8), and Kinshasa control (9.23). Over the course of the study, Bandundu had significantly more
331 uploads per participant compared to Kinshasa ($W = 1825.5$, $p\text{-value} = 0.009$), and the Bandundu
332 control group had higher data collection effort than the incentive group ($W=845.5$, $p\text{-value} = 0.026$).
333 but there was no significant difference between the control and incentive groups overall or within
334 Kinshasa. Figure 5 below shows the weekly comparisons in data collection effort over the course of
335 the trial between the trial districts, treatment types, and treatments within districts. Bandundu had
336 a trend of higher uploads in weeks 2-4, 8, and 11 ($p\text{-value} < 0.1$), and significantly higher uploads in
337 weeks 9, 10, and 12-16 ($p\text{-value} < 0.05$) compared to the Kinshasa groups. Comparisons of the

338 treatment groups showed that the control groups had higher participation than the incentive
339 groups in the final three weeks of the trial (p -value < 0.05). Within Bandundu, the control group had
340 higher participation in weeks 14 and 16 of the trial compared to the incentive group (p -value
341 < 0.05), and within Kinshasa, the control group had trends of lower participation than the incentive
342 group in weeks 1 and 9 of the trial (p -value < 0.1)

343

344 *Fig. 5: Week-to-week comparisons of collection effort between the trial districts, and incentive and control*
345 *groups overall and within Kinshasa and Bandundu. The magnitude of the bars shows the difference in*
346 *uploads per person from the first group in panel subtitle relative to the second. Non-significant differences*
347 *are shown in grey; trends are shown in green (p -value < 0.1), significant results in yellow (p -value < 0.05), and*
348 *highly significant differences are shown in red (p -value < 0.001). The whiskers around each bar show the*
349 *standard error.*

350

351 Post-Trial Focus Group Discussions

352 The focus group discussions after the trial were attended by 27 participants from Kinshasa and 26
353 from Bandundu equating to ~35% of the original trial participants. In comparison to the 12 pre-trial
354 FGDs, only 6 post-trial FGDs were run. Post-trial FGD attendance was lower in the Kinshasa
355 incentive group compared to other groups ($n = 8$, p -value = 0.098, 95% CI: [0.0995, 1.2767] odds
356 ratio: 0.368). All returning participants indicated that they had positive experiences with the
357 HumBug sensor and a positive experience with the HumBug bed nets. When asked about the effect
358 of the trial on their life, a respondent from the Bandundu incentive site said, "I was doing this work
359 without someone to command me (...) it gave me the sense of responsibility."

360

361 There was a lower interest in future participation for control groups (n=12) compared to the
362 incentive groups (n=25), and lower interest in future participation in Kinshasa (44.4% of
363 respondents) compared to Bandundu (96.2% of respondents). Both district and trial group were
364 significantly associated with participants interest in future participation (p-value < 0.001, 95% CI:
365 [1.801, 5.468], odds ratio: 3.102), showing that in Bandundu the control group was 10% less likely
366 to say they would participate in the future than the Bandundu incentive group, and in Kinshasa the
367 control group was 60% less likely to participate in the future compared to the Kinshasa incentive
368 group.

369

370 When asked about challenges or things they wanted to change in the trial, electricity access was
371 mentioned more frequently in the Kinshasa incentive group (W = 32, p-value = 0.007) and the
372 Bandundu control group (W = 129, p-value = 0.008) compared to the other trial group in their
373 respective districts. Financial compensation/increased compensation was mentioned by 17
374 respondents, but did not vary significantly between trial groups. When queried on how to improve
375 the study, a respondent indicated a desire for more interaction and information, "When we send
376 the data, on your part, we need a sign to know if the data has arrived or not (...) until the end, we
377 had no communication."

378

379 Finally, only participants in the Kinshasa control group mentioned wanting to keep the smartphone
380 (n=12). Despite not being discussed in other post-trial FGDs, phone retention was an issue at the
381 end of the study. In total, there were 33 phones retained by participants across the districts, with a
382 higher likelihood for the Kinshasa incentive group and for the Bandundu control group to retain
383 phones, compared to the other trial group in their district (p-value=0.00516, 95% CI [1.567, 74.361],
384 odds ratio: 9.177). Additionally, nine phones were reported as lost or stolen by the end of the trial

385 period. As one participant phrased it from the control trial group in Kinshasa, “I want to be left with
386 the phones because we will be laughed at (...) if you take them away from us, they will say that we
387 participated in vain.”

388

389 Discussion

390 Our results demonstrate that in the DRC there was no significant difference in the number of audio
391 recordings uploaded or the number of weeks that participants were active between the groups
392 receiving financial incentives and the groups that did not. The previous HumBug study in Tanzania
393 similarly showed no significant effect of incentives (monetary incentives, text message reminders,
394 or their combination) on the total audio recordings uploaded (34). We found there was no
395 significant effect of demographics such as age, sex, or income on the number of uploads or
396 participation weeks, nor were there significant differences in these demographic traits between the
397 districts, trial groups, or trial groups within districts. The only significant effect on the number of
398 uploads and active weeks was study location which showed that participation was overall higher in
399 Bandundu compared to Kinshasa, and a difference between the control and treatment group
400 uploads in Bandundu due to a higher recording effort of the control group. This suggests that
401 differences between the districts are not attributable to demographic effects, and instead, there
402 may be other differences, such as intrinsic motivations or community leadership, resulting in higher
403 numbers of uploads in Bandundu compared to the Kinshasa sites.

404

405 Our study results also show that incentivisation did not significantly affect audio uploads or activity
406 within Kinshasa and showed that the control group had more audio uploads in Bandundu compared
407 to the incentive group. Previous studies have shown that if incentivised actions align with social
408 norms, incentives can bolster desired behaviours (53), however, incentives can also weaken

409 participants' intrinsic motivations—a phenomenon known as the 'crowding out' effect. This occurs
410 when the anticipated intrinsic benefits of participation, such as the satisfaction of contributing, are
411 diminished by the introduction of external incentives (54). The lack of response to incentives in our
412 study suggests that incentives were neither supporting intrinsic motivations nor diminishing them.
413 Notably, for logistical reasons this trial used individual health districts as trial groups. Differences in
414 response to incentives may be more strongly attributed to local culture and attitudes than
415 treatment group. In the future, a randomised control trial that assesses participants' existing
416 motivations could more effectively capture variations both among and within localities engaged in
417 data collection. Additionally, further work is needed to understand what the tipping points are for
418 incentives to significantly motivate participation, and what behaviours may either be unaffected by
419 incentivisation or diminished by it.

420

421 Although incentives did not affect the overall number of data uploads across districts, there were
422 differences in the persistence of data collection participation and effort. The participation
423 persistence of the trial groups showed that the Bandundu control group had approximately the
424 same amount of participation from the start to the end of the trial, but that the other three trial
425 groups experienced significant declines in the latter half of the trial. A review paper of citizen
426 science studies found that studies that provided long term training and contact with organisers
427 were the most successful at engaging participants (55). The declines in robust participation towards
428 the end of the trial in our study may be attributed to the lack of engagement with participants that
429 was necessary to test the usability of the data collection methodology with low intervention. The
430 low contact resulted in several post-trial focus group respondents indicating they would have liked
431 more contact, despite all participants saying the sensor and application were easy to use. Although
432 participants had positive attitudes regarding the data collection and responsibility (supporting

433 results from other studies (56)) access to data and collaborators may further improve participants'
434 feelings about their participation and their contributions (57).

435

436 Participant-researcher contact may be why our previous trial in Tanzania found that text reminders,
437 both alone and paired with an incentive, positively affected persistence in data collection, despite
438 the monetary incentive alone not showing a significant effect in that study system (34). The
439 declines in participation persistence and effort seen in this study support this previous finding that
440 incentives alone are not enough to motivate participation. The tipping point in the middle of the
441 study where participation dropped suggests that participants do not need further encouragement
442 or motivation in the short term to collect Humbug data. In longer term contexts however,
443 consistent contact and communication may be necessary to continue to motivate participants, and
444 we have found that monetary incentives do not accomplish this, and in fact appear to only increase
445 participation in the early phases of the study.

446

447 The differences in upload effort between our trial groups did not follow patterns relating to
448 incentivisation. The data collection effort in Bandundu shows that the control group performed
449 similarly to the incentive group for most of the trial, with the control group performing significantly
450 better in the final couple of weeks. This appears to be due to a continued high level of data
451 collection persistence and effort on the part of the Bandundu control group, which seems to be
452 attributable to some intrinsic difference in this site compared to the other sites. In Kinshasa,
453 incentivisation improved data collection efforts in the early parts of the trial compared to the
454 control group, suggesting that at the time when participants were overall the most active, the
455 incentive did improve the completeness of data collection efforts. However, this higher level of
456 data collection effort by Kinshasa's incentive group dropped approximately halfway through the

457 trial, after which there was not a significant difference between the control and incentive groups.
458 This mirrors the results for participant activity, which showed that participation significantly
459 dropped off halfway through. The decline in data collection efforts shows that even those who are
460 continuing to participate are not collecting data for the entire time period (6 pm to 6 am) as
461 requested in the data collection methodology. This may be in part due to the design of our
462 incentives, which were given regardless of activity and were not scaled for completeness of
463 participation. This result shows that despite incentivisation initially appearing to motivate complete
464 data collection in one of our districts, the diminishing interest and effort over time are not
465 overcome by incentivisation.

466

467 Our post-trial FGDs gave insight into issues surrounding incentives, including compensation and
468 technology. Over half of the participants in the trial did not return for the post-trial FGDs. The
469 reasons cited by the DRC team were a desire to keep the smartphone and the lack of payment at
470 the control sites, though there were more post-trial FGD attendees from the control groups than
471 the incentive groups. This compensation issue was emphasised by a refusal to return the phones by
472 some participants in trial groups in both districts. The Bandundu control group exhibited higher
473 phone retention compared to the Bandundu incentive group, and the Kinshasa incentive group
474 showed higher phone retention in contrast to the Kinshasa control group. There was no significant
475 difference in the number of participants that named phone retention as a motive for participation
476 between the districts, the trial groups, or between the trial groups within districts, showing that
477 previously held values were not associated with phone retention. Instead, the pattern of phone
478 retention mirrored the activity levels of each trial group, perhaps indicating that the more active
479 participants felt a stronger entitlement to keeping the phones. However, phone retention was
480 related to the relative effort in each district, rather than the overall effort. For example, the

481 Bandundu incentive and the Kinshasa incentive had similar activity levels and total uploads, yet the
482 Kinshasa incentive group retained twice the number of phones. As far as we are aware, participants
483 in each district and trial group did not know the participation rates of the other groups, and
484 therefore, did not know their relative participation. This indicates that individuals' participation
485 might be influenced by their perception of effort.

486

487 The phone retention and refusal to return at the end of the study is an example of how citizen
488 science projects can deviate from planned outcomes. In this context, participants effectively
489 provided themselves with an incentive (or supplementary incentive) by refusing to return phones,
490 despite study agreements and information about compensation ahead of the trial. A study on
491 citizen science with specially designed video games found that game design can diminish citizen
492 science outcomes and enhance the odds of cheating and cutting corners, depending on the ability
493 to do so (58). It is important to consider how incentive application design therefore may influence
494 study outcomes and participation. The incentive group in this case received payment regardless of
495 participation, which may have opened this study system to cutting corners (e.g., reduced activity
496 and upload effort at the end of the study period). As an alternative, incentives given in response to
497 data collection activity close this loophole and effectively encourage data collection persistence.
498 Additionally, the post-trial survey in this study was not incentivised, and therefore participants
499 gained more from refusing to return phones than they did from attending. Balancing incentive
500 value with requests and alternatives is necessary for incentives to operate as intended, and as seen
501 in this study, some individuals will not follow prescriptive actions if they feel they can benefit in
502 other ways.

503

504 Our post-trial FGDs revealed that despite there not being a significant or differential response to
505 incentivisation, there were significant contrasting attitudes between the study groups in Bandundu
506 and those in Kinshasa. Bandundu exhibited a significantly higher overall participation rate in FGDs
507 compared to Kinshasa, and a greater proportion of Bandundu participants expressed willingness to
508 partake in the trial again, irrespective of incentivisation (25 out of 26 post-trial FGD attendees). Out
509 of 27 post-trial FGD attendees from Kinshasa, only 12 indicated a willingness to participate again.
510 Additionally, there appear to be differences in values between the two districts. Among the 16
511 participants who identified knowledge as their motive for future participation, only one was from
512 Kinshasa. Conversely, among Kinshasa participants who expressed willingness to participate again,
513 the majority cited incentives as their driving factor. Further research is needed to understand how
514 community and culture interact with incentive application, but in this case, despite differing
515 motivations for participation, incentives did not have any significant effects on overall participation
516 in the study.

517

518 The biggest issues cited by participants who took part in the trial were access to electricity to
519 charge the smartphone sensor and internet connection. Interestingly, the groups that mentioned
520 access to electricity significantly more were also the groups that performed best for data collection
521 activity and effort in each district. It could be that the practicality of it was more apparent to the
522 groups that put more effort in, and practical difficulties may be part of the reason people felt they
523 should have been compensated better for the study. Of the incentive group participants who
524 attended the focus group, over half said they felt they had not been given enough money for the
525 study (14/22). This dissatisfaction may have been due to the unexpected cost of transferring
526 money, which reduced the originally stated compensation (from \$10 to \$9). In pre-trial FGDs, there
527 were only six cases when participants who cited money as their motivation asked for a monetary

528 value at or below the incentive value given in the study, suggesting that the incentive potentially
529 fell below common expectations.

530

531 Despite the sentiment that the money was not enough, incentive group participants were more
532 likely to say they would participate in the future than control group participants, and although bed
533 nets were one of the least cited reasons for participating in the study, almost all participants
534 mentioned the bed nets as a benefit they experienced in the trial, perhaps improving their desire to
535 continue participation. Considering that all phones were turned on and collected data at least once
536 during the study period, it appears useability was not a limiting factor of the study, and indeed all
537 participants apart from one said that they felt the MozzWear app was easy to use. Due to the lack
538 of practical issues with the study, our results highlight the importance of scaling expectations of
539 citizen science and matching the value of incentives with the effort and length of trials to improve
540 participation and satisfaction.

541

542 Conclusions

543 Results of this study show that in this study system incentives did not have significant effects on
544 data collection activity throughout the trial but did have some effect on data collection persistence
545 and effort, improving data collection effort during portions of the trial in one of our study districts.
546 Our results indicate that community differences are what drive the trends in participation in this
547 study system, and that more information is needed ahead of trials to assess how community
548 differences may impact participation in citizen science data collection. Participant engagement with
549 researchers and study organisers appears to improve data collection, particularly in longer studies.
550 Communication with participants is important for appropriately scaling incentives to account for
551 citizen data collection effort. Systems should be designed appropriately to maximise the alignment

552 of incentives with active data collection. Overall, the incentives tested do not appear to significantly
553 improve data collection in this study system, and in this case, increased engagement during data
554 collection may have improved outcomes. With technology becoming an increasingly used tool in
555 citizen science, its application should be considered in reference to existing infrastructure.
556 Consideration should be made for the value that the technology represents in reference to the
557 overall value of the incentive being offered to avoid issues with data sensor retention in response
558 to changing attitudes towards incentive value.

559

560 Acknowledgements

561 Thank you to the DRC team at Kinshasa School of Public Health and University of Bandundu and to
562 Paul Mansiangi, who has since passed away, for organising and co-ordinating the study. We are
563 grateful to the community leaders, health zone officials, and all the participants from Trois Rivières,
564 Caravane, Bu and Mikondo for their support and participation in the study.

565

566 Ethics Approval and Consent

567 The University of Oxford have sponsored the study. This study was reviewed by the Oxford Tropical
568 Research Ethics Committee (OxTREC) and approved by the Kinshasa School of Public Health.
569 Informed written consent was obtained from all interviewees prior to the focus group discussions
570 and the quantitative feedback survey. Consent forms signed by all the participants included the
571 release of summary findings and details of individual responses from this study. Potential
572 participants were informed of the voluntary nature of the study and had at least 24 hours to
573 consider taking part. Efforts were made to create a safe place for sharing experiences during the
574 focus group discussions.

575

576 References

- 577 1. GSMA. GSMA | The Mobile Economy - Sub-Saharan Africa 2017 - GSMA Sub Saharan
578 Africa [Internet]. 2017 [cited 2023 Aug 28]. Available from:
579 [https://www.gsma.com/subsaharanafrica/resources/mobile-economy-2017-sub-saharan-](https://www.gsma.com/subsaharanafrica/resources/mobile-economy-2017-sub-saharan-africa-2017)
580 [africa-2017](https://www.gsma.com/subsaharanafrica/resources/mobile-economy-2017-sub-saharan-africa-2017)
- 581 2. GSMA. GSMA | The State of Mobile Internet Connectivity Report 2019 | Mobile for
582 Development [Internet]. 2019 [cited 2023 Aug 28]. Available from:
583 [https://www.gsma.com/mobilefordevelopment/resources/the-state-of-mobile-internet-](https://www.gsma.com/mobilefordevelopment/resources/the-state-of-mobile-internet-connectivity-report-2019/)
584 [connectivity-report-2019/](https://www.gsma.com/mobilefordevelopment/resources/the-state-of-mobile-internet-connectivity-report-2019/)
- 585 3. ITU Hub. Measuring digital development: Facts & figures 2019 - ITU Hub [Internet]. 2019
586 [cited 2023 Aug 28]. Available from: [https://www.itu.int/hub/2020/05/measuring-digital-](https://www.itu.int/hub/2020/05/measuring-digital-development-facts-figures-2019/)
587 [development-facts-figures-2019/](https://www.itu.int/hub/2020/05/measuring-digital-development-facts-figures-2019/)
- 588 4. Baxter C, Carroll JA, Keogh B, Vandelanotte C. Assessment of Mobile Health Apps Using
589 Built-In Smartphone Sensors for Diagnosis and Treatment: Systematic Survey of Apps Listed

- 590 in International Curated Health App Libraries. *JMIR Mhealth Uhealth*. 2020 Feb
591 3;8(2):e16741.
- 592 5. Kamel Boulos MN, Brewer AC, Karimkhani C, Buller DB, Dellavalle RP. Mobile medical and
593 health apps: state of the art, concerns, regulatory control and certification. *Online J Public*
594 *Health Inform*. 2014 Feb 5;5(3).
- 595 6. Lee SH, Nurmatov UB, Nwaru BI, Mukherjee M, Grant L, Pagliari C. Effectiveness of mHealth
596 interventions for maternal, newborn and child health in low- and middle-income countries:
597 Systematic review and meta-analysis. *J Glob Health [Internet]*. 2016 [cited 2023 Aug
598 28];6(1). Available from: [/pmc/articles/PMC4643860/](https://pubmed.ncbi.nlm.nih.gov/31111111/)
- 599 7. Lee Ventola C. Mobile Devices and Apps for Health Care Professionals: Uses and Benefits.
600 *Pharmacy and Therapeutics [Internet]*. 2014 [cited 2023 Aug 28];39(5):356. Available from:
601 [/pmc/articles/PMC4029126/](https://pubmed.ncbi.nlm.nih.gov/25111111/)
- 602 8. Barrington J, Wereko-Brobby O, Ward P, Mwafongo W, Kungulwe S. SMS for Life: a pilot
603 project to improve anti-malarial drug supply management in rural Tanzania using standard
604 technology. *Malar J*. 2010 Dec 27;9(1):298.
- 605 9. Davis RG, Kamanga A, Castillo-Salgado C, Chime N, Mharakurwa S, Shiff C. Early detection
606 of malaria foci for targeted interventions in endemic southern Zambia. *Malar J [Internet]*. 2011
607 Sep 12 [cited 2023 Aug 28];10(1):1–12. Available from:
608 <https://malariajournal.biomedcentral.com/articles/10.1186/1475-2875-10-260>
- 609 10. Francis F, Ishengoma DS, Mmbando BP, Rutta ASM, Malecela MN, Mayala B, et al.
610 Deployment and use of mobile phone technology for real-time reporting of fever cases and
611 malaria treatment failure in areas of declining malaria transmission in Muheza district north-
612 eastern Tanzania. *Malar J [Internet]*. 2017 Aug 1 [cited 2023 Aug 28];16(1). Available from:
613 <https://pubmed.ncbi.nlm.nih.gov/28764792/>
- 614 11. Gibson DG, Ochieng B, Kagucia EW, Were J, Hayford K, Moulton LH, et al. Mobile phone-
615 delivered reminders and incentives to improve childhood immunisation coverage and
616 timeliness in Kenya (M-SIMU): a cluster randomised controlled trial. *Lancet Glob Health*

- 617 [Internet]. 2017 Apr 1 [cited 2023 Aug 28];5(4):e428–38. Available from:
618 <https://pubmed.ncbi.nlm.nih.gov/28288747/>
- 619 12. Kamanga A, Moono P, Stresman G, Mharakurwa S, Shiff C. Rural health centres,
620 communities and malaria case detection in Zambia using mobile telephones: A means to
621 detect potential reservoirs of infection in unstable transmission conditions. *Malar J* [Internet].
622 2010 Apr 15 [cited 2023 Aug 28];9(1):1–7. Available from:
623 <https://malariajournal.biomedcentral.com/articles/10.1186/1475-2875-9-96>
- 624 13. Kaunda-Khangamwa BN, Steinhardt LC, Rowe AK, Gumbo A, Moyo D, Nsona H, et al. The
625 effect of mobile phone text message reminders on health workers' adherence to case
626 management guidelines for malaria and other diseases in Malawi: lessons from qualitative
627 data from a cluster-randomized trial. *Malar J* [Internet]. 2018 Dec 19 [cited 2023 Aug
628 28];17(1). Available from: <https://pubmed.ncbi.nlm.nih.gov/30567603/>
- 629 14. Meankaew P, Kaewkungwal J, Khamsiriwatchara A, Khunthong P, Singhasivanon P, Satimai
630 W. Application of mobile-technology for disease and treatment monitoring of malaria in the
631 “Better Border Healthcare Programme.” *Malar J* [Internet]. 2010 Aug 19 [cited 2023 Aug
632 28];9(1):1–14. Available from: <https://link.springer.com/articles/10.1186/1475-2875-9-237>
- 633 15. Wakadha H, Chandir S, Were EV, Rubin A, Obor D, Levine OS, et al. The feasibility of using
634 mobile-phone based SMS reminders and conditional cash transfers to improve timely
635 immunization in rural Kenya. *Vaccine* [Internet]. 2013 Jan 30 [cited 2023 Aug 28];31(6):987–
636 93. Available from: <https://pubmed.ncbi.nlm.nih.gov/23246258/>
- 637 16. Roche J, Bell L, Galvão C, Golumbic YN, Kloetzer L, Knoblen N, et al. Citizen Science,
638 Education, and Learning: Challenges and Opportunities. *Frontiers in Sociology*. 2020 Dec
639 2;5:613814.
- 640 17. Conrad CC, Hilchey KG. A review of citizen science and community-based environmental
641 monitoring: Issues and opportunities. *Environ Monit Assess* [Internet]. 2011 May 17 [cited
642 2023 Oct 2];176(1–4):273–91. Available from:
643 <https://link.springer.com/article/10.1007/s10661-010-1582-5>

- 644 18. Den Broeder L, Devilee J, Van Oers H, Schuit AJ, Wagemakers A. Citizen Science for public
645 health. *Health Promot Int* [Internet]. 2018 Jun 1 [cited 2023 Oct 2];33(3):505–14. Available
646 from: <https://dx.doi.org/10.1093/heapro/daw086>
- 647 19. Di Domenico SI, Ryan RM. The emerging neuroscience of intrinsic motivation: A new frontier
648 in self-determination research. *Front Hum Neurosci*. 2017 Mar 24;11:247005.
- 649 20. Hennessey B, Moran S, Altringer B, Amabile TM. Extrinsic and Intrinsic Motivation. *Wiley*
650 *Encyclopedia of Management*. 2015 Jan 21;1–4.
- 651 21. Ryan RM, Deci EL. Intrinsic and extrinsic motivation from a self-determination theory
652 perspective: Definitions, theory, practices, and future directions. *Contemp Educ Psychol*.
653 2020 Apr 1;61.
- 654 22. Aceves-Bueno E, Adeleye AS, Bradley D, Tyler Brandt W, Callery P, Feraud M, et al. Citizen
655 Science as an Approach for Overcoming Insufficient Monitoring and Inadequate Stakeholder
656 Buy-in in Adaptive Management: Criteria and Evidence. *Ecosystems* [Internet]. 2015 Apr 1
657 [cited 2023 Oct 2];18(3):493–506. Available from:
658 <https://link.springer.com/article/10.1007/s10021-015-9842-4>
- 659 23. Cetas ER, Yasué M. A systematic review of motivational values and conservation success in
660 and around protected areas. *Conserv Biol* [Internet]. 2017 Feb 1 [cited 2023 Aug
661 28];31(1):203–12. Available from: <https://pubmed.ncbi.nlm.nih.gov/27254293/>
- 662 24. Lester RT, Ritvo P, Mills EJ, Kariri A, Karanja S, Chung MH, et al. Effects of a mobile phone
663 short message service on antiretroviral treatment adherence in Kenya (WelTel Kenya1): a
664 randomised trial. *Lancet* [Internet]. 2010 Nov 27 [cited 2023 Aug 28];376(9755):1838–45.
665 Available from: <https://pubmed.ncbi.nlm.nih.gov/21071074/>
- 666 25. Ngabo F, Nguimfack J, Nwaigwe F, Mugeni C, Muhoza D, Wilson DR, et al. Designing and
667 Implementing an Innovative SMS-based alert system (RapidSMS-MCH) to monitor
668 pregnancy and reduce maternal and child deaths in Rwanda. *Pan Afr Med J* [Internet]. 2012
669 [cited 2023 Aug 28];13. Available from: [/pmc/articles/PMC3542808/](https://pubmed.ncbi.nlm.nih.gov/21071074/)

- 670 26. Richter A, Comay O, Svenningsen CS, Larsen JC, Hecker S, Tøttrup AP, et al. Motivation
671 and support services in citizen science insect monitoring: A cross-country study. *Biol*
672 *Conserv.* 2021 Nov 1;263.
- 673 27. Tomlinson M, Solomon W, Singh Y, Doherty T, Chopra M, Ijumba P, et al. The use of mobile
674 phones as a data collection tool: a report from a household survey in South Africa. *BMC Med*
675 *Inform Decis Mak* [Internet]. 2009 [cited 2023 Aug 28];9(1). Available from:
676 <https://pubmed.ncbi.nlm.nih.gov/20030813/>
- 677 28. Bell S, Marzano M, Cent J, Kobierska H, Podjed D, Vandzinskaite D, et al. What counts?
678 Volunteers and their organisations in the recording and monitoring of biodiversity. *Biodivers*
679 *Conserv.* 2008 Dec 26;17(14):3443–54.
- 680 29. Finkelstien MA. Intrinsic vs Extrinsic Motivational Orientations and the Volunteer Process.
681 *Pers Individ Dif* [Internet]. 2009 Jan 1 [cited 2023 Aug 28];46(5–6):653. Available from:
682 https://digitalcommons.usf.edu/psy_facpub/770
- 683 30. Hobbs SJ, White PCL. Motivations and barriers in relation to community participation in
684 biodiversity recording. *J Nat Conserv* [Internet]. 2012 Dec [cited 2023 Aug 28];20(6):364–73.
685 Available from: [https://pure.york.ac.uk/portal/en/publications/motivations-and-barriers-in-](https://pure.york.ac.uk/portal/en/publications/motivations-and-barriers-in-relation-to-community-participation-i)
686 [relation-to-community-participation-i](https://pure.york.ac.uk/portal/en/publications/motivations-and-barriers-in-relation-to-community-participation-i)
- 687 31. Jordan Raddick M, Bracey G, Gay PL, Lintott CJ, Cardamone C, Murray P, et al. Galaxy zoo:
688 Motivations of citizen scientists. *Astronomy Education Review.* 2013;12(1).
- 689 32. Cerasoli CP, Nicklin JM, Ford MT. Intrinsic motivation and extrinsic incentives jointly predict
690 performance: A 40-year meta-analysis. *Psychol Bull.* 2014;140(4):980–1008.
- 691 33. Patall EA, Cooper H, Robinson JC. The effects of choice on intrinsic motivation and related
692 outcomes: a meta-analysis of research findings. *Psychol Bull* [Internet]. 2008 Mar [cited 2023
693 Aug 28];134(2):270–300. Available from: <https://pubmed.ncbi.nlm.nih.gov/18298272/>
- 694 34. Dam R, Mponzi W, Msaky D, Mwandiyala T, Kaindoa EW, Sinka ME, et al. What incentives
695 encourage local communities to collect and upload mosquito sound data by using
696 smartphones? A mixed methods study in Tanzania. *Glob Health Res Policy.* 2023 Dec 1;8(1).

- 697 35. Sinka ME, Zilli D, Li Y, Kiskin I, Msaky D, Kihonda J, et al. HumBug – An Acoustic Mosquito
698 Monitoring Tool for use on budget smartphones. *Methods Ecol Evol* [Internet]. 2021 Oct 1
699 [cited 2023 Aug 28];12(10):1848–59. Available from:
700 <https://onlinelibrary.wiley.com/doi/full/10.1111/2041-210X.13663>
- 701 36. Kiskin I, Zilli D, Li Y, Sinka M, Willis K, Roberts S. Bioacoustic detection with wavelet-
702 conditioned convolutional neural networks. *Neural Comput Appl*. 2020 Feb 1;32(4):915–27.
- 703 37. Li Y, Kiskin I, Zilli D, Sinka M, Chan H, Willis K, et al. Cost-sensitive detection with variational
704 autoencoders for environmental acoustic sensing. 2017 Dec 6 [cited 2023 Dec 7]; Available
705 from: <http://arxiv.org/abs/1712.02488>
- 706 38. Kiskin I, Orozco BP, Windebank T, Zilli D, Sinka M, Willis K, et al. Mosquito Detection with
707 Neural Networks: The Buzz of Deep Learning. 2017 May 15 [cited 2023 Dec 7]; Available
708 from: <http://arxiv.org/abs/1705.05180>
- 709 39. Li Y, Zilli D, Chan H, Kiskin I, Sinka M, Roberts S, et al. Mosquito detection with low-cost
710 smartphones: data acquisition for malaria research. 2017 Nov 16 [cited 2023 Dec 7];
711 Available from: <http://arxiv.org/abs/1711.06346>
- 712 40. Kiskin I, Cobb AD, Sinka M, Willis K, Roberts SJ. Automatic Acoustic Mosquito Tagging with
713 Bayesian Neural Networks. *Lecture Notes in Computer Science (including subseries Lecture*
714 *Notes in Artificial Intelligence and Lecture Notes in Bioinformatics)*. 2021;12978 LNAI:351–
715 66.
- 716 41. Kiskin I, Cobb AD, Wang L, Roberts S. Humbug Zooniverse: A Crowd-Sourced Acoustic
717 Mosquito Dataset. *ICASSP, IEEE International Conference on Acoustics, Speech and Signal*
718 *Processing - Proceedings*. 2020 May 1;2020-May:916–20.
- 719 42. Li Y, Kiskin I, Sinka M, Zilli D, Chan H, Herreros-Moya E, et al. Fast mosquito acoustic
720 detection with field cup recordings: an initial investigation. *dcase.community* [Internet]. 2018
721 [cited 2024 Aug 16]; Available from:
722 https://dcase.community/documents/workshop2018/proceedings/DCASE2018Workshop_Li_1
723 36.pdf

- 724 43. Centers for Disease Control and Prevention. CDC in the Democratic Republic of the Congo |
725 Global Health | CDC [Internet]. 2023 [cited 2023 Aug 28]. Available from:
726 <https://www.cdc.gov/globalhealth/countries/drc/default.htm>
- 727 44. World Health Organisation. World malaria report 2022 [Internet]. 2022 [cited 2023 Aug 28].
728 Available from: [https://www.who.int/teams/global-malaria-programme/reports/world-malaria-](https://www.who.int/teams/global-malaria-programme/reports/world-malaria-report-2022)
729 [report-2022](https://www.who.int/teams/global-malaria-programme/reports/world-malaria-report-2022)
- 730 45. SimpleMaps.com. "Democratic Republic of the Congo (DRC) GIS Data." *SimpleMaps.com*,
731 2024, <https://simplemaps.com/gis/country/cd#admin1>. Accessed 16 Oct. 2024. Licensed
732 under Creative Commons Attribution License. <https://creativecommons.org/licenses/by/4.0/>
- 733 46. Humanitarian Data Exchange. DRC health data. Humanitarian Data Exchange; 2024.
734 Available from: <https://data.humdata.org/dataset/drc-health-data>. Accessed on: 14 Oct 2024.
- 735 47. QGIS Development Team. QGIS [3.0.0]. Open Source Geospatial Foundation; 2018.
736 Available from: <https://qgis.org/en/site/>.
- 737 48. Saldaña Johnny. The Coding Manual for Qualitative Researchers. 2021;1–440.
- 738 49. R Core Team. R: A Language and Environment for Statistical Computing_. 2023; R
739 Foundation for Statistical Computing, Vienna, Austria. <<https://www.R-project.org/>>.
- 740 50. Kruskal WH, Wallis WA. Use of ranks in one-criterion variance analysis. *J Am Stat Assoc*.
741 1952;47:583-621. Available from: <http://dx.doi.org/10.1080/01621459.1952.10483441>.
- 742 51. Dinno A. dunn.test: Dunn's Test of Multiple Comparisons Using Rank Sums. R package.
743 2024. Available from: <<https://CRAN.R-project.org/package=dunn.test>>.
- 744 52. Wickham H. ggplot2 Elegant Graphics for Data Analysis. Use R! series. 2016;211.
- 745 53. Kerr JM, Bum T, Lapinski MK, Liu RW, Lu Z, Zhao J. The effects of social norms on
746 motivation crowding: experimental evidence from the Tibetan Plateau. *Int J Commons*
747 [Internet]. 2019 [cited 2023 Aug 28];13(1):430–54. Available from:
748 <https://thecommonsjournal.org/articles/10.18352/ijc.882>

- 749 54. Rode J, Gómez-Baggethun E, Krause T. Motivation crowding by economic incentives in
750 conservation policy: A review of the empirical evidence. *Ecological Economics*. 2015 Sep
751 1;117:270–82.
- 752 55. Aceves-Bueno E, Adeleye AS, Feraud M, Huang Y, Tao M, Yang Y, et al. The Accuracy of
753 Citizen Science Data: A Quantitative Review. *Bulletin of the Ecological Society of America*.
754 2017 Oct;98(4):278–90.
- 755 56. Peter M, Diekötter T, Kremer K. Participant Outcomes of Biodiversity Citizen Science
756 Projects: A Systematic Literature Review. *Sustainability* 2019, Vol 11, Page 2780 [Internet].
757 2019 May 15 [cited 2023 Oct 1];11(10):2780. Available from: [https://www.mdpi.com/2071-](https://www.mdpi.com/2071-1050/11/10/2780/htm)
758 [1050/11/10/2780/htm](https://www.mdpi.com/2071-1050/11/10/2780/htm)
- 759 57. Ganzevoort W, van den Born RJG, Halfman W, Turnhout S. Sharing biodiversity data: citizen
760 scientists' concerns and motivations. *Biodivers Conserv* [Internet]. 2017 Nov 1 [cited 2023
761 Oct 1];26(12):2821–37. Available from: [https://link.springer.com/article/10.1007/s10531-017-](https://link.springer.com/article/10.1007/s10531-017-1391-z)
762 [1391-z](https://link.springer.com/article/10.1007/s10531-017-1391-z)
- 763 58. Prestopnik N, Crowston K. Purposeful gaming & socio-computational systems. In:
764 *Proceedings of the 17th ACM international conference on Supporting group work*. New York,
765 NY, USA: ACM; 2012. p. 75–84.

766

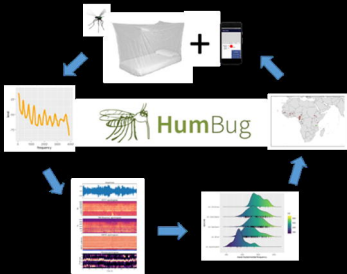
767 **S1 Appendix:** The DHS Demographic Survey Administered to Participants

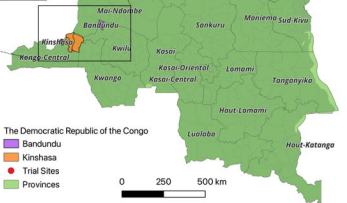
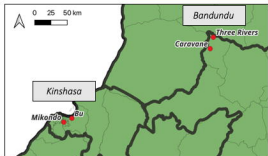
768 **S2 Appendix:** The focus group discussion questions administered pre-trial and post-trial.

769 **S3 Table:** A table of results from comparisons of the demographic survey between study districts,
770 trial groups overall, and trial groups within each district.

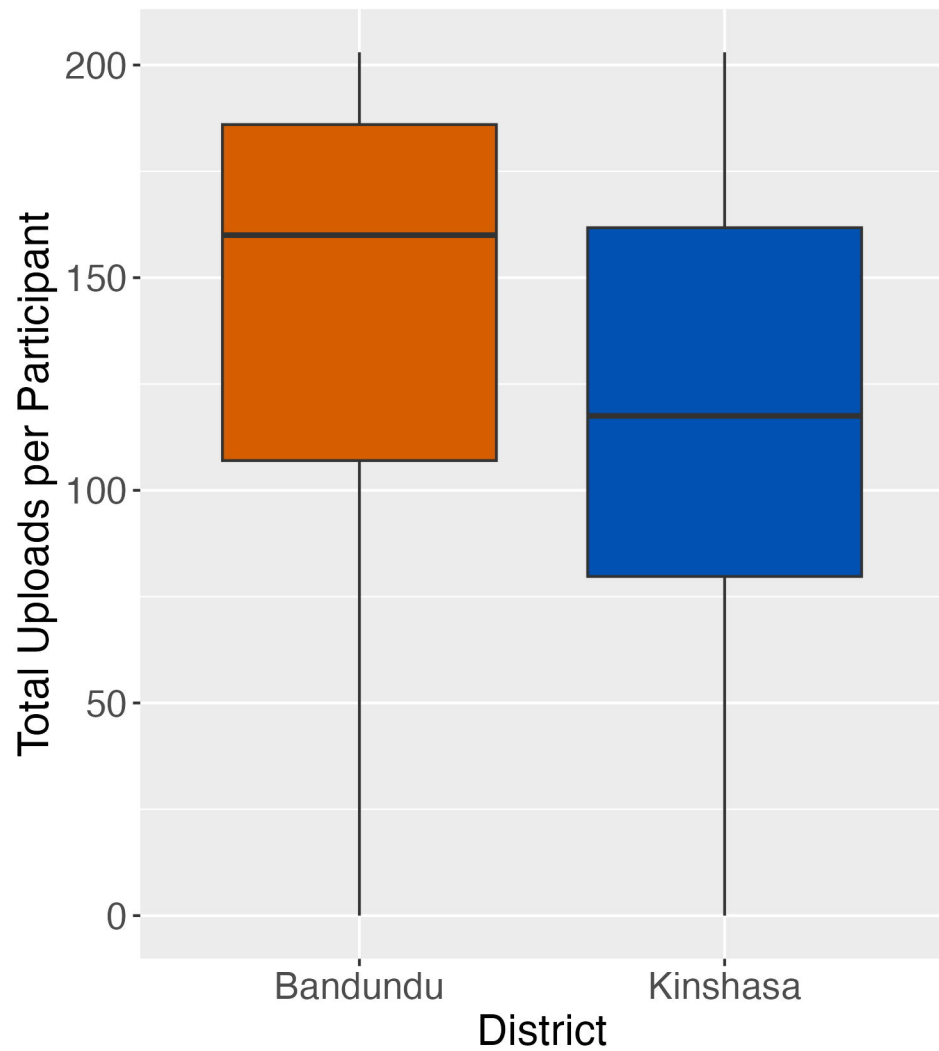
771

772

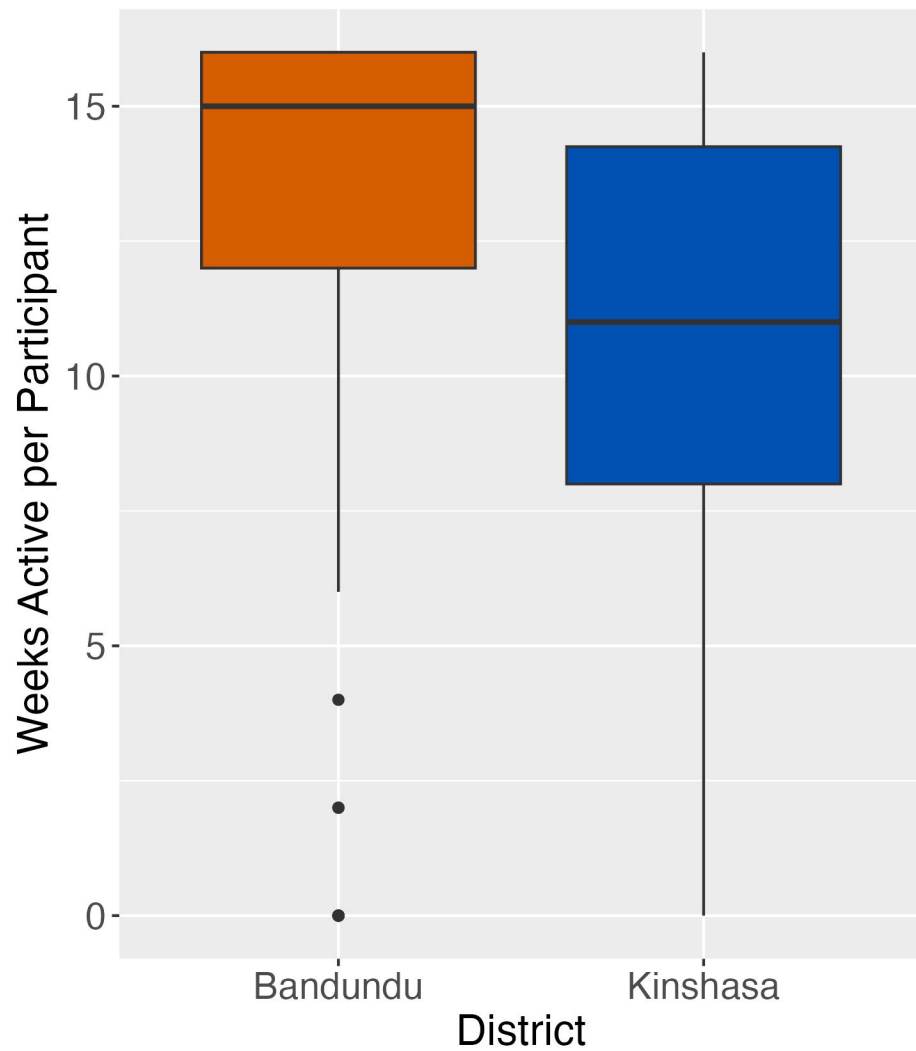


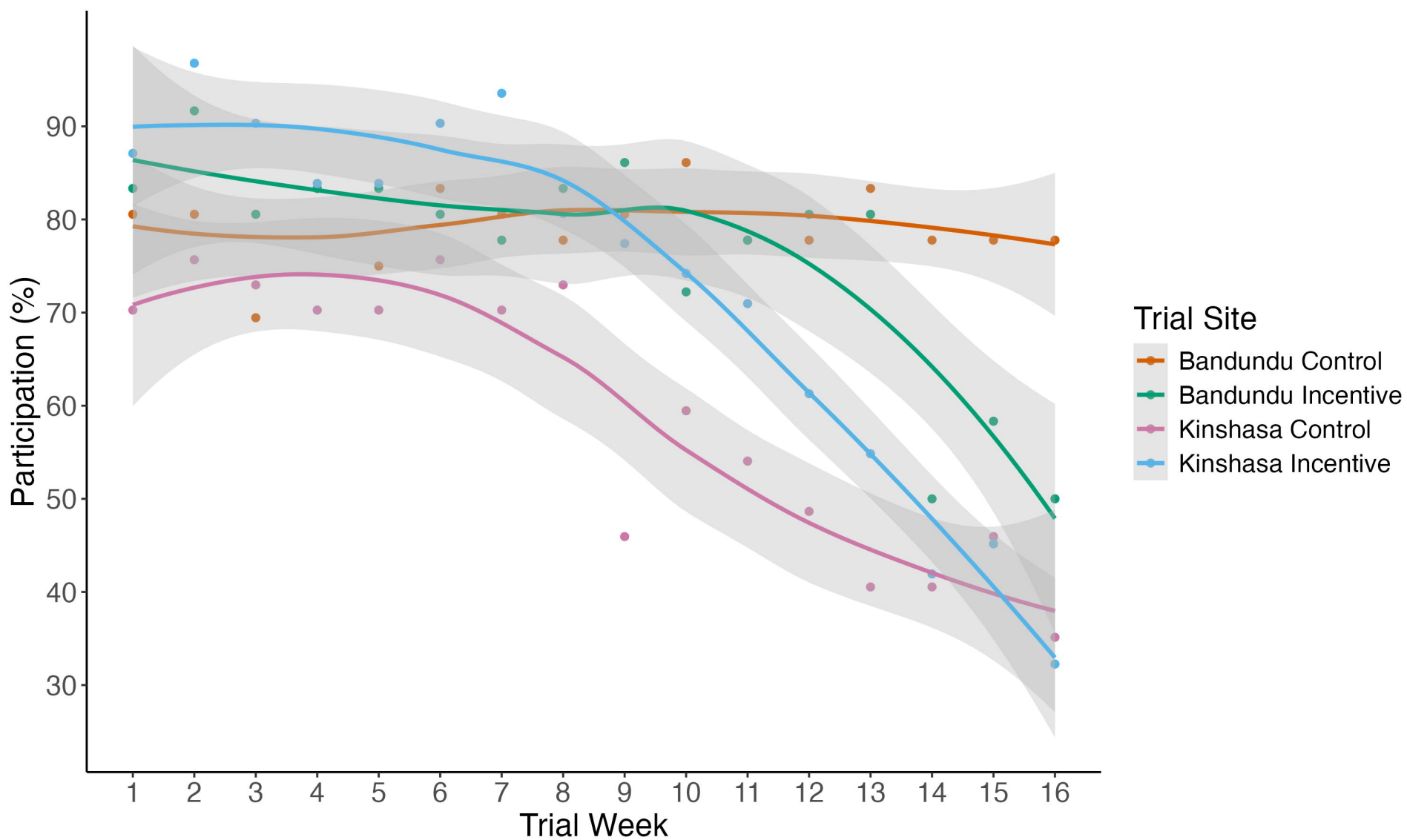


a)

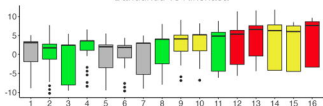


b)

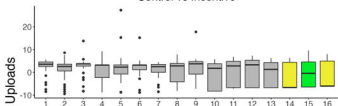




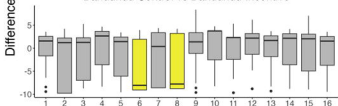
Bandundu vs Kinshasa



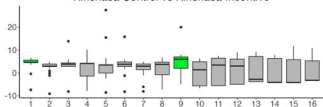
Control vs Incentive



Bandundu Control vs Bandundu Incentive



Kinshasa Control vs Kinshasa Incentive



P-Value



Trial Week