

# Supplement to

## Integrative Modeling of the Spread of Serious Infectious Diseases and Corresponding Wastewater Dynamics

Nina Schmid<sup>a</sup>, Julia Bicker<sup>b</sup>, Andreas F. Hofmann<sup>c</sup>, Karina Wallrafen-Sam<sup>a</sup>, David Kerkmann<sup>d</sup>, Andreas Wieser<sup>e,f,g</sup>, Martin J. Kühn<sup>a,b</sup>, Jan Hasenauer<sup>a,h,i</sup>

<sup>a</sup> *Life & Medical Sciences (LIMES) Institute, University of Bonn, Bonn, Germany*

<sup>b</sup> *Institute of Software Technology, Department of High-Performance Computing, German Aerospace Center, Cologne, Germany*

<sup>c</sup> *tandler.com GmbH, Buch am Erlbach, Germany*

<sup>d</sup> *Helmholtz Centre for Infection Research, Brunswick, Germany*

<sup>e</sup> *Institute of Infectious Diseases and Tropical Medicine, LMU University Hospital Munich, Munich, Germany*

<sup>f</sup> *German Centre for Infection Research (DZIF), Partner Site Munich, Munich, Germany*

<sup>g</sup> *Max von Pettenkofer Institute, Faculty of Medicine, LMU Munich, Munich, Germany*

<sup>h</sup> *Technische Universität München, Center for Mathematics, Garching, Germany*

<sup>i</sup> *Helmholtz Zentrum München, German Research Center for Environmental Health, Computational Health Center, Neuherberg, Germany*

---

### Appendix A. Supplementary Mobility Model

Here, we provide the values for the location types  $T_{from}^{(i)}$ ,  $T_{to}^{(i)}$ ; the values for the location transition probabilities  $p_i$ ; and the formulas for the binary-valued functions  $\delta^{(i)}(t, \alpha)$  for every mobility rule  $m_i$  from Section 2.2.1 in the main manuscript. The mobility rules used for this study are

1. Go to school
2. Return from school
3. Go to work
4. Return from work
5. Go to shop
6. Return from shop

7. Go to recreation
8. Return from recreation
9. Go to hospital
10. Go to ICU
11. Return home when recovered
12. Get buried

The mobility rules are executed at discrete time points  $t_0, \dots, t_{max}$  with  $t_{k+1} = t_k + \Delta t$ . Hence, for every  $t \in [t_0, t_{max}]$ , there are time points  $t_k$  and  $t_{k+1}$  such that  $t \in [t_k, t_{k+1})$ . The time is modeled in steps of hours, i.e.  $\Delta t = 1$  [hour]. A description of all parameters used in the mobility rules and their values is given in Table C.3.

1. Go to school

$$\begin{aligned}
T_{from}^{(1)} &= Home \\
T_{to}^{(1)} &= School \\
p_1 &= SchoolRatio(\mathcal{A}^{(\alpha)}) \\
\delta^{(1)}(t, \alpha) &= \begin{cases} 1, & \text{if } t_{ToSchool}^{(\alpha)} \in [t_k - 24 \cdot \lfloor \frac{t_k}{24} \rfloor; t_{k+1} - 24 \cdot \lfloor \frac{t_{k+1}}{24} \rfloor) \wedge \lfloor \frac{t}{24} \rfloor \pmod{7} < 5 \\ 0, & \text{else} \end{cases}
\end{aligned}$$

$t_{ToSchool}^{(\alpha)} \sim U(\text{MinSchoolHour}, \text{MaxSchoolHour})$  is the day time in hours agent  $\alpha$  goes to school.

2. Return from school

$$\begin{aligned}
T_{from}^{(2)} &= School \\
T_{to}^{(2)} &= Home \\
p_2 &= 1 \\
\delta^{(2)}(t, \alpha) &= \begin{cases} 1, & \text{if } t_{FromSchool}^{(\alpha)} \in [t_k - 24 \cdot \lfloor \frac{t_k}{24} \rfloor; t_{k+1} - 24 \cdot \lfloor \frac{t_{k+1}}{24} \rfloor) \\ 0, & \text{else} \end{cases}
\end{aligned}$$

$t_{FromSchool}^{(\alpha)} \sim U(\text{MinReturnSchoolHour}, \text{MaxReturnSchoolHour})$  is the day time in hours agent  $\alpha$  returns from school.

3. Go to work

$$\begin{aligned}
T_{from}^{(3)} &= Home \\
T_{to}^{(3)} &= Work \\
p_3 &= WorkRatio(\mathcal{A}^{(\alpha)}) \\
\delta^{(3)}(t, \alpha) &= \begin{cases} 1, & \text{if } t_{ToWork}^{(\alpha)} \in [t_k - 24 \cdot \lfloor \frac{t_k}{24} \rfloor; t_{k+1} - 24 \cdot \lfloor \frac{t_{k+1}}{24} \rfloor) \wedge \lfloor \frac{t}{24} \rfloor \pmod{7} < 5 \\ 0, & \text{else} \end{cases}
\end{aligned}$$

$t_{ToWork}^{(\alpha)} \sim U(\text{MinWorkHour}, \text{MaxWorkHour})$  is the day time in hours agent  $\alpha$  goes to work.

4. Return from work

$$\begin{aligned}
T_{from}^{(4)} &= Work \\
T_{to}^{(4)} &= Home \\
p_4 &= 1 \\
\delta^{(4)}(t, \alpha) &= \begin{cases} 1, & \text{if } t_{FromWork}^{(\alpha)} \in [t_k - 24 \cdot \lfloor \frac{t_k}{24} \rfloor; t_{k+1} - 24 \cdot \lfloor \frac{t_{k+1}}{24} \rfloor) \\ 0, & \text{else} \end{cases}
\end{aligned}$$

$t_{FromWork}^{(\alpha)} \sim U(\text{MinReturnWorkHour}, \text{MaxReturnWorkHour})$  is the day time in hours agent  $\alpha$  returns from work.

5. Go to shop

$$\begin{aligned}
T_{from}^{(5)} &= Home \\
T_{to}^{(5)} &= Shop \\
p_5 &= 1 - \exp(-\Delta t \cdot ShopRate(\mathcal{A}^{(\alpha)})) \\
\delta^{(5)}(t, \alpha) &= \begin{cases} 1, & \text{if } \lfloor \frac{t}{24} \rfloor \pmod{7} < 6 \wedge t - 24 \cdot \lfloor \frac{t}{24} \rfloor \in (7; 22) \\ 0, & \text{else} \end{cases}
\end{aligned}$$

6. Return from shop

$$\begin{aligned}
T_{from}^{(6)} &= Shop \\
T_{to}^{(6)} &= Home \\
p_6 &= 1 \\
\delta^{(6)}(t, \alpha) &= \begin{cases} 1, & \text{if } \tau_{loc}^{(\alpha)} \geq 1 \\ 0, & \text{else} \end{cases}
\end{aligned}$$

$\tau_{loc}^{(\alpha)}$  is the time in hours agent  $\alpha$  is at its current location.

7. Go to recreation

$$\begin{aligned}
T_{from}^{(7)} &= Home \\
T_{to}^{(7)} &= Recreation \\
p_7 &= 1 - \exp(-\Delta t \cdot RecreationRate(\mathcal{A}^{(\alpha)})) \\
\delta^{(7)}(t, \alpha) &= \begin{cases} 1, & \text{if } (\lfloor \frac{t}{24} \rfloor \pmod{7}) < 5 \wedge t - 24 \cdot \lfloor \frac{t}{24} \rfloor \in [19; 22) \vee \\ & (\lfloor \frac{t}{24} \rfloor \pmod{7}) \geq 5 \wedge t - 24 \cdot \lfloor \frac{t}{24} \rfloor \in [10; 22) \\ 0, & \text{else} \end{cases}
\end{aligned}$$

8. Return from recreation

$$\begin{aligned}
T_{from}^{(8)} &= Recreation \\
T_{to}^{(8)} &= Home \\
p_8 &= 1 \\
\delta^{(8)}(t, \alpha) &= \begin{cases} 1, & \text{if } \tau_{loc}^{(\alpha)} \geq 2 \wedge t - 24 \cdot \lfloor \frac{t}{24} \rfloor \geq 20 \\ 0, & \text{else} \end{cases}
\end{aligned}$$

9. Go to hospital

$$\begin{aligned}
T_{from}^{(9)} &= \{Home, School, Work, Shop, Recreation\} \\
T_{to}^{(9)} &= Hospital \\
p_9 &= 1 \\
\delta^{(9)}(t, \alpha) &= \begin{cases} 1, & \text{if } s^{(\alpha)}(t) = I_{sev} \\ 0, & \text{else} \end{cases}
\end{aligned}$$

10. Go to ICU

$$\begin{aligned}
T_{from}^{(10)} &= \{Home, School, Work, Shop, Recreation, Hospital\} \\
T_{to}^{(10)} &= ICU \\
p_{10} &= 1 \\
\delta^{(10)}(t, \alpha) &= \begin{cases} 1, & \text{if } s^{(\alpha)}(t) = I_{cri} \\ 0, & \text{else} \end{cases}
\end{aligned}$$

11. Return home when recovered

$$\begin{aligned}T_{from}^{(11)} &= \{Hospital, ICU\} \\ T_{to}^{(i)} &= Home \\ p_{11} &= 1 \\ \delta^{(11)}(t, \alpha) &= \begin{cases} 1, & \text{if } s^{(\alpha)}(t) = R \\ 0, & \text{else} \end{cases}\end{aligned}$$

12. Get buried

$$\begin{aligned}T_{from}^{(12)} &= ICU \\ T_{to}^{(12)} &= Cemetery \\ p_{12} &= 1 \\ \delta^{(12)}(t, \alpha) &= \begin{cases} 1, & \text{if } s^{(\alpha)}(t) = D \\ 0, & \text{else} \end{cases}\end{aligned}$$

## Appendix B. Supplementary Figures

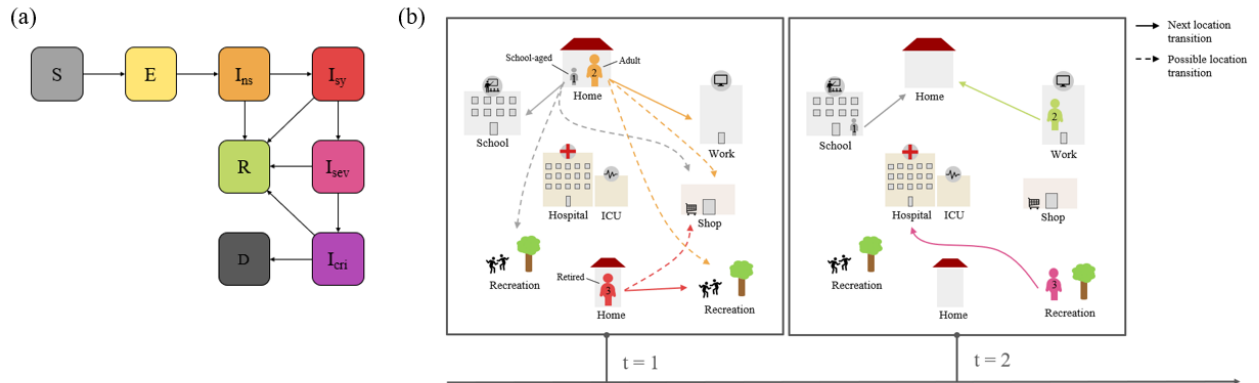


Figure B.1: **Overview of Infection States and Mobility in the ABM.** (a) All potential courses of the disease. The Exposed state always leads to an infectious, non-symptomatic state while for all subsequent infection states (except Recovered or Dead) recovery or worsening of symptoms is possible. (b) Possible location transitions for three agents. The next location transition depends on the agent – i.e. its current location, its age group and infection state – and on time.

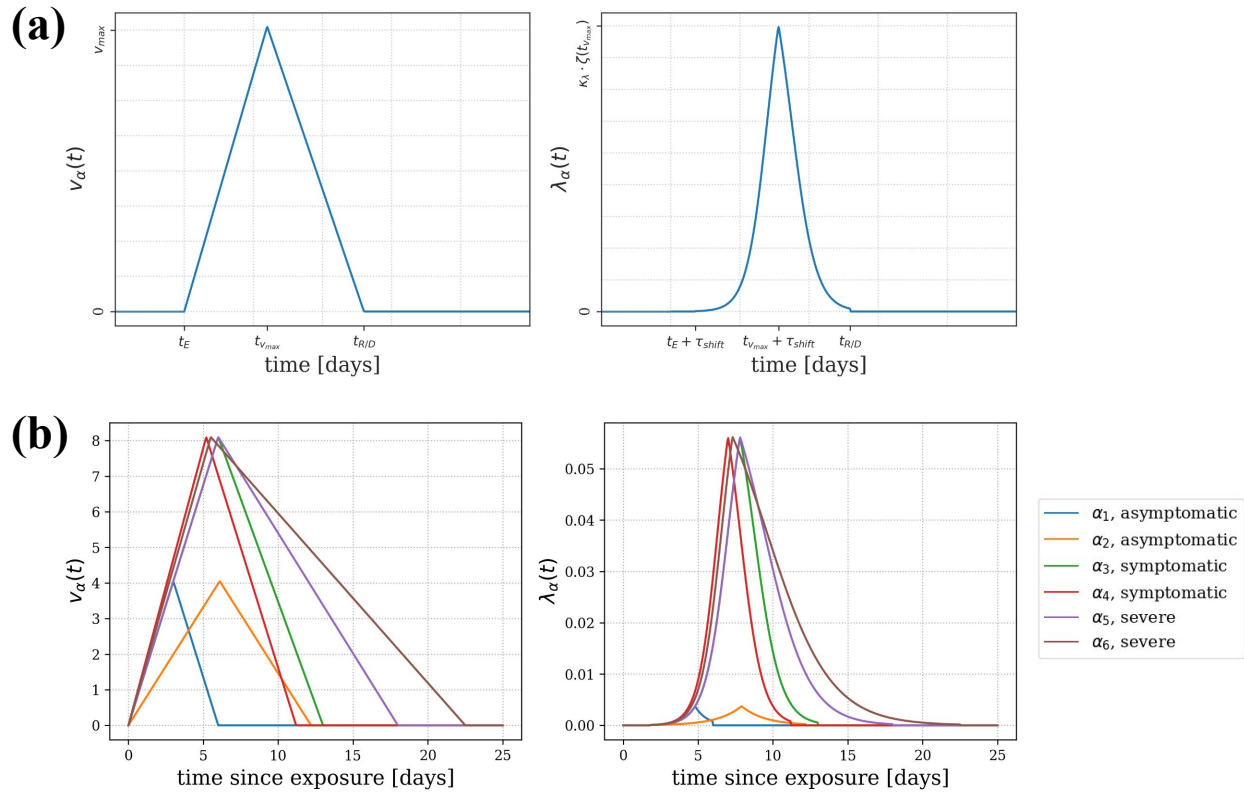


Figure B.2: **Viral Load and Infectiousness Curve.** The (logarithmic) viral load  $v_\alpha(t)$  (left) and the infectiousness curve  $\lambda_\alpha(t)$  (right) are shown for a generic agent (a) and for six example agents with differing courses of infection (b).  $v_\alpha(t)$  is given on the  $\log_{10}$  scale.

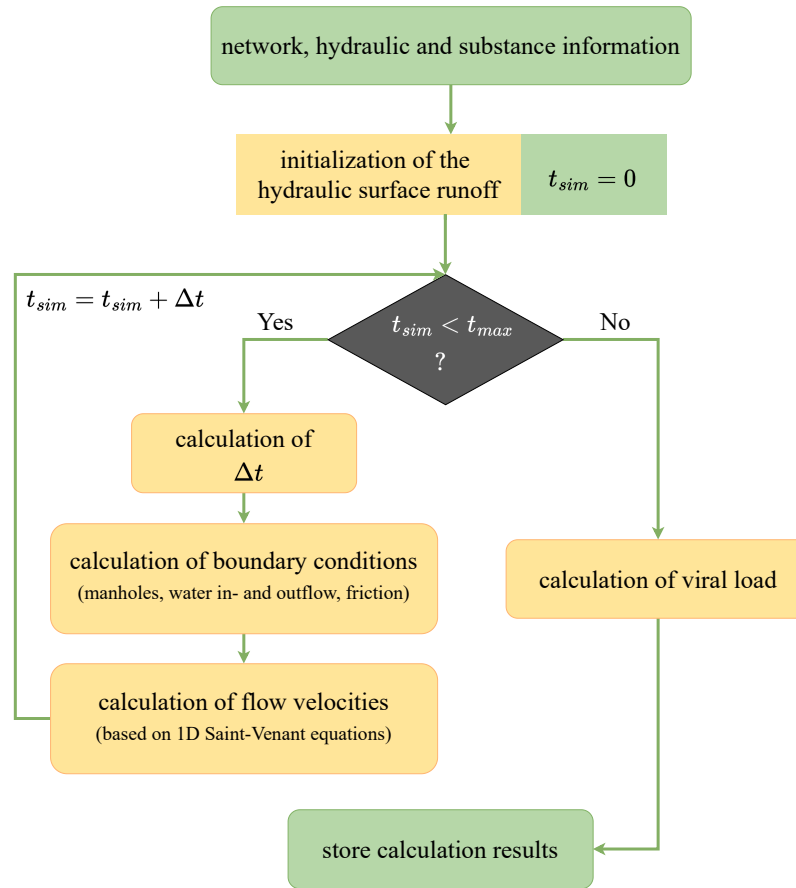


Figure B.3: **Pipeline of Hydrodynamic Calculations.** Based on detailed sewage network information, the hydraulic initial and boundary conditions, and information of the substance of interest, the hydraulic runoff is initialized for the simulation start  $t_{sim} = 0$ . Iteratively, the time step of the hydraulic calculations  $\Delta t$ , new boundary conditions, and the corresponding flow velocities of the time step are calculated until  $t_{sim}$  reaches the simulation end time point  $t_{max}$ . Based on the calculated flow rates, the viral load is simulated over time and per location before all simulation results are stored.



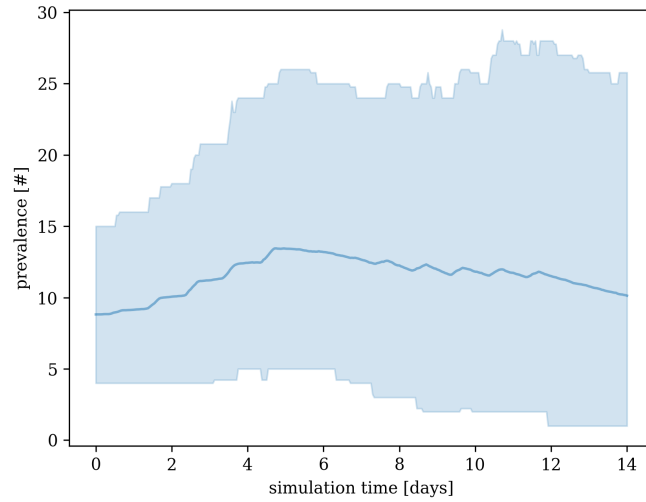


Figure B.4: **Prevalence Simulated by the ABM.** The mean prevalence ( $E + I_{ns} + I_{sy} + I_{sev} + I_{cri}$ ) over time of 250 simulations is shown by a solid line; 95% percentiles are shown by the shaded area.

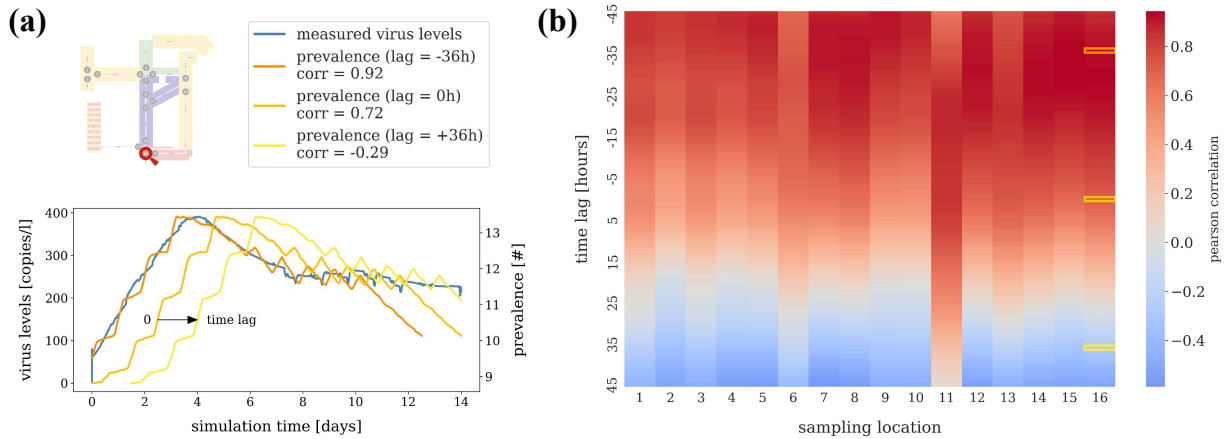


Figure B.5: **Cross-Correlations Between Mean Wastewater Samples and Prevalence.** (a) Trajectory of the mean RNA copies per liter in wastewater (averaged across 250 simulations) for sampling location 16 and the corresponding mean total prevalence shifted with lags -36, 0, and 36 hours. (b) Pearson cross-correlations between the mean RNA copies per liter in wastewater (averaged across 250 simulations) and the corresponding mean prevalence over time for the 16 different locations. The time lag describes the shift in prevalence.

## Appendix C. Supplementary Tables

Parameter	Description	Default value (per age group)
$\mu_{I_{ns}}^{I_{sy}}$	Proportion of symptomatic cases per non-symptomatic case	0.79
$\mu_{I_{sy}}^{I_{sev}}$	Proportion of severe cases per symptomatic case	0.08
$\mu_{I_{sev}}^{I_{cri}}$	Proportion of critical cases per severe case	0.18
$\mu_{I_{cri}}^D$	Proportion of dead cases per critical case	0.1
$\tau_E$	Duration (in days) of exposed, non-infectious state before transition to non-symptomatic infectious state. Is log-normally distributed.	mean: 3; sd: 1.2
$\tau_{I_{ns}}^{I_{sy}}$	Duration (in days) of non-symptomatic infectious state before transition to symptomatic infectious state. Is log-normally distributed.	mean: 2.2; sd: 0.5
$\tau_{I_{ns}}^R$	Duration (in days) of non-symptomatic infectious state before recovery. Is log-normally distributed.	mean: 9.2; sd: 2
$\tau_{I_{sy}}^{I_{sev}}$	Duration (in days) of symptomatic infectious state before transition to severe infectious state. Is log-normally distributed.	mean: 10.5 (1-3), 6 (4-6); sd: 1.1
$\tau_{I_{sy}}^R$	Duration (in days) of symptomatic infectious state before recovery. Is log-normally distributed.	mean: 7; sd: 2
$\tau_{I_{sev}}^{I_{cri}}$	Duration (in days) of severe infectious state before transition to critical infectious state. Is log-normally distributed.	mean: 5; sd: 2
$\tau_{I_{sev}}^R$	Duration (in days) of severe infectious state before recovery. Is log-normally distributed.	mean: 5 (1-2), 6 (3), 8 (4), 10 (5), 12 (6); sd: 2 (1-5), 3 (6)
$\tau_{I_{cri}}^D$	Duration (in days) of critical infectious state before death. Is log-normally distributed.	mean: 6 (1-3), 16.5 (4-5), 11 (6); sd: 2
$\tau_{I_{cri}}^R$	Duration (in days) of critical infectious state before recovery. Is log-normally distributed.	mean: 7 (1-3), 17.5 (4-5), 12.5 (6); sd: 3
$\tau_{infected}$	Total duration of infection (in days) for a particular agent, i.e. $\tau_E + \tau_{I_{ns}}^{I_{sy}} + \tau_{I_{sy}}^{I_{sev}} + \tau_{I_{sev}}^{I_{cri}} + \tau_{I_{cri}}^R$	
$n_A$	Number of age groups	6

Table C.1: **ABM transmission parameters.**

Parameter	Description	Default Value
$v_{\max}^{sy}$	Peak viral load value in $\log_{10}$ units for symptomatic infections	8.1
$a$	The viral load value in $\log_{10}$ units at which the sigmoid function $\zeta$ of an agent's viral load changes from concave up to concave down	-7.0
$b$	The slope of the sigmoid function $\zeta$ relative to the change in viral load at the boundary determined by $a$	1.0
$\kappa_{\lambda}$	Scaling factor applied to the sigmoid function $\zeta$ of an agent's viral load to transform it to a transmission rate	0.075
$\kappa_{\gamma}$	Scaling factor (in RNA copies per day) applied to the sigmoid function $\zeta$ of an agent's viral load to transform it to an RNA shedding rate	$10^{7.1}$

Table C.2: **Shedding and Infectiousness Curve Parameters.**

Parameter	Description	Default value (per age group)
$T_{from}^{(i)}$	Start location type for mobility rule $m_i$	
$T_{to}^{(i)}$	End location type for mobility rule $m_i$	
$SchoolRatio(\mathcal{A})$	Proportion of persons in age group $\mathcal{A}$ that go to school	0 (1, 3-6), 1 (2)
$MinSchoolHour$	Earliest day time (in hours) a person can go to school	6
$MaxSchoolHour$	Latest day time (in hours) a person can go to school	9
$t_{ToSchool}^{(\alpha)}$	Day time (in hours) agent $\alpha$ goes to school	Uniformly distributed in $MinSchoolHour$ and $MaxSchoolHour$
$MinReturnSchoolHour$	Earliest day time (in hours) a person can return from school	14
$MaxReturnSchoolHour$	Latest day time (in hours) a person can return from school	17
$t_{FromSchool}^{(\alpha)}$	Day time (in hours) agent $\alpha$ returns from school	Uniformly distributed in $MinReturnSchoolHour$ and $MaxReturnSchoolHour$
$WorkRatio(\mathcal{A})$	Proportion of persons in age group $\mathcal{A}$ that go to work	0 (1-2, 5-6), 1 (3-4)
$MinWorkHour$	Earliest day time (in hours) a person can go to work	6
$MaxWorkHour$	Latest day time (in hours) a person can go to work	9
$t_{ToWork}^{(\alpha)}$	Day time (in hours) agent $\alpha$ goes to work	Uniformly distributed in $MinWorkHour$ and $MaxWorkHour$
$MinReturnWorkHour$	Earliest day time (in hours) a person can return from work	15
$MaxReturnWorkHour$	Latest day time (in hours) a person can return from work	18
$t_{FromWork}^{(\alpha)}$	Day time (in hours) agent $\alpha$ returns from work	Uniformly distributed in $MinReturnWorkHour$ and $MaxReturnWorkHour$
$ShopRate(\mathcal{A})$	Parameter for exponential distribution to decide whether a person of age $\mathcal{A}$ goes to a shop	1
$RecreationRate(\mathcal{A})$	Parameter for exponential distribution to decide whether a person of age $\mathcal{A}$ goes to a recreation location	1
$\tau_{loc}^{\alpha}$	Duration (in hours) agent $\alpha$ is at its current location $l^{(\alpha)}$	

Table C.3: **ABM Mobility Parameters.**

Id	Rain Scenario	Viral Degradation	Post-Processing
1a	No precipitation	None	None
1b	No precipitation	None	24-hour compound sampling
1c	No precipitation	None	Daily grab sampling
2a	Moderate gentle rain	None	None
2b	Moderate gentle rain	None	PMMoV normalization
2c	Moderate gentle rain	None	Flow rate normalization
3a	Moderate rain	None	None
3b	Moderate rain	None	PMMoV normalization
3c	Moderate rain	None	Flow rate normalization
4	No precipitation	linear ( $k_1 = -0.1$ )	None
5	No precipitation	exponential ( $k_2 = -0.001$ )	None
6a	Moderate rain	linear ( $k_1 = -0.1$ )	None
6b	Moderate rain	linear ( $k_1 = -0.1$ )	PMMoV normalization
7a	Moderate rain	exponential ( $k_2 = -0.001$ )	None
7b	Moderate rain	exponential ( $k_2 = -0.001$ )	PMMoV normalization

Table C.4: **Overview of Seven Hydraulic Scenarios.** Simulations using the same 250 ABM output simulations and ++SYSTEMS settings. Some hydraulic scenarios were post-processed in multiple forms to analyze different characteristics.

degradation setting	rain scenario	MAE (normalized)	MAE (unnormalized)	MAE difference
no degradation	moderate gentle	1.39	9.09	-7.71
	moderate	17.06	161.71	-144.65
exponential degradation	moderate	140.83	228.27	-87.44
linear degradation	moderate	178.91	210.19	-31.28

Table C.5: **Effect of PMMoV Normalization.** The mean absolute error (MAE) across all simulations and time points relative to the no-rain, no-decay reference scenario, with versus without PMMoV normalization.