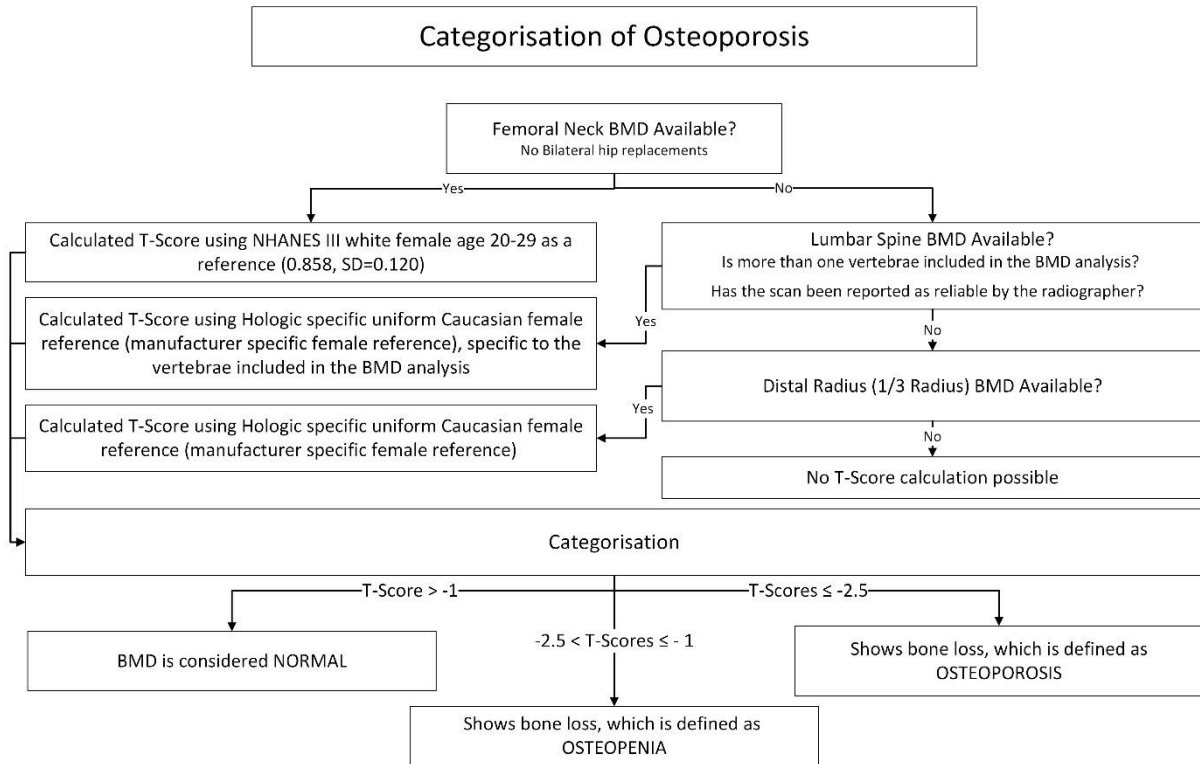


Supplementary Material

Contents:

Appendix 1 A flow chart to demonstrate how T-score site was chosen, and how osteoporosis, osteopenia (low bone mass) and normal BMD were categorised.	2
Appendix 2 How zoledronate and denosumab were considered in the medication gap analysis.....	2
Appendix 3 Reasons given by participants for not having a DXA scan	3
Appendix 4 Comparing <i>age, sex, MDS-UPDRS Part III and CFS Scores</i> of those who did and did not have a DXA scan	3
Appendix 5 Frequency of Bone Protective Medications in our study population	4
Appendix 6 FRAX-derived probabilities of fracture, and NOGG risk categorisation, before and after the inclusion of Femoral Neck BMD in the FRAX algorithm	4
Appendix 7 Comparing those who did and did not experience recurrent falls	5
Appendix 8 FRAX-derived probabilities of fracture without the inclusion of femoral neck BMD, before and after adjustment for recurrent falls	5
Appendix 9 FRAX-derived probabilities of fracture with the inclusion of femoral neck BMD, before and after adjustment for recurrent falls	5

Appendix 1 A flow chart to demonstrate how T-score site was chosen, and how osteoporosis, osteopenia (low bone mass) and normal BMD were categorised.



Appendix 2 How zoledronate and denosumab were considered in the medication gap analysis.

Participants were considered ‘on treatment’ if anabolic or anti-resorptive treatments were started and not discontinued before the baseline visit. Treatment with Zoledronate was considered to be discontinued if participants had their most recent intravenous infusion more than 18 months before the baseline visit. Denosumab treatment was considered to be discontinued if participants had their most recent injection more than 8 months before the baseline visit.

Appendix 3 Reasons given by participants for not having a DXA scan

Reason	N	Percentage
Back pain	1	4%
Burden	1	4%
DNA/Cancelled	5	19%
Housebound or bedbound	3	11%
Mobility	2	7%
No specific reason given	9	33%
Additional travel	4	15%
Uncertainty about scan benefits	1	4%
Withdrawn from PRIME-RCT	1	4%
Total	27	100%

Appendix 4 Comparing *age, sex, MDS-UPDRS Part III and CFS Scores* of those who did and did not have a DXA scan

	No DXA	DXA Scan Available	p-value
N	28 (13.1%)	186 (86.9%)	
Age at Visit 1	78.6 (5.8)	73.9 (8.3)	0.005
Gender			
Female	11 (39.3%)	64 (34.4%)	0.614
Male	17 (60.7%)	122 (65.6%)	
MDS-UPDRS Section 3	58.6 (21.9)	40.3 (18.5)	<0.001
Frailty			
CFS < 5	5 (17.9%)	127 (68.3%)	<0.001
CFS ≥ 5	23 (82.1%)	59 (31.7%)	

Continuous data are described as mean (SD), and compared with t-test
 Categorical data is described as frequency (Percent%), and compared with Chi Square test
 Frailty is described as frequency (Percent%), and compared with a z-test of proportions

Appendix 5 Frequency of prescribed Bone Protective Medications in our study population

	Frequency
Total N	182
None	161 (88.5%)
Alendronate	16 (8.8%)
Risedronate	3 (1.6%)
Zoledronate	1 (0.5%)
Denosumab	1 (0.5%)

Appendix 6 FRAX-derived probabilities of fracture, and NOGG risk categorisation, before and after the inclusion of Femoral Neck BMD in the FRAX algorithm

	Femoral Neck BMD Included	
	No	Yes
N	182.0 (50.0%)	182.0 (50.0%)
FRAX probability of MOF*	16.3 (11.1)	12.7 (9.0)
FRAX probability of Hip fracture*	8.5 (9.0)	5.0 (6.8)
NOGG Category*		
Low Risk	73.0 (40.1%)	126.0 (69.2%)
Intermediated Risk - below IT†	57.0 (31.3%)	0.0 (0.0%)
Intermediate Risk-above IT‡	14.0 (7.7%)	0.0 (0.0%)
High Risk	18.0 (9.9%)	23.0 (12.6%)
Very High Risk	20.0 (11.0%)	33.0 (18.1%)

Continuous data are described as mean (Standard Deviation)

Categorical data is described as frequency (Percent%)

* PD was included as rheumatoid arthritis

† Intermediate Risk, but below the intervention threshold

‡ Intermediate Risk, but above the intervention threshold

Appendix 7 Comparing those who did and did not experience recurrent falls

	No Recurrent Falls	Recurrent Falls	p-value
N	108 (59.3%)	74 (40.7%)	
Age	73.8 (8.1)	73.9 (8.5)	0.887
Sex			
Female	35 (32.4%)	28 (37.8%)	0.449
Male	73 (67.6%)	46 (62.2%)	
MDS-UPDRS Part III	36.2 (18.3)	46.1 (17.1)	<0.001

Continuous data are described as mean (SD), and compared using a t-test
 Categorical data is described as frequency (Percent%), and compared using a Chi square test

Appendix 8 FRAX-derived probabilities of fracture without the inclusion of femoral neck BMD, before and after adjustment for recurrent falls

	No Falls Adjustment	Falls Adjustment Applied*
N	182 (50.0%)	182 (50.0%)
FRAX Score for MOF	16.3 (11.1)	18.3 (12.8)
FRAX Score for Hip	8.5 (9.0)	9.6 (10.1)

Continuous data are described as mean (SD)
 *Falls adjustment is a 30% increase in FRAX probability applied where people experienced recurrent falls (2 or more falls over the previous year) – there were 74 recurrent fallers in the study population

Appendix 9 FRAX-derived probabilities of fracture with the inclusion of femoral neck BMD, before and after adjustment for recurrent falls

	No Falls Adjustment	Falls Adjustment Applied*
N	182.0 (50.0%)	182.0 (50.0%)
FRAX Score for MOF	12.7 (9.0)	14.2 (9.9)
FRAX Score for Hip	5.0 (6.8)	5.5 (7.2)

Continuous data are described as mean (SD)
 *Falls adjustment is a 30% increase in FRAX probability applied where people experienced recurrent falls (2 or more falls over the previous year) – there were 74 recurrent fallers in the study population