

1 **Relationship between plasma cortisol concentration and Long COVID symptoms**
2 **in the post-acute phase of COVID-19: a cross-sectional study and**
3 **recommendations for future research**

4
5 Thomas Dalhuisen¹, Halle Grebe¹, Khamal Anglin¹, Scott Lu^{1,2}, Sarah A. Goldberg^{1,2},
6 Lucas Kallás-Silva¹, Joshua Hauser¹, Emily Conway¹, Marin Ewing¹, Jessica Y. Chen¹,
7 Emily A. Fehrman¹, J. Daniel Kelly², Jeffrey N. Martin², Peter W. Hunt³, Timothy J.
8 Henrich³, Matthew S. Durstenfeld⁴, Steven G. Deeks¹, Elizabeth Murphy⁵, Morris
9 Schambelan⁵, Michael J. Peluso¹

10

11 ¹Division of HIV, Infectious Diseases, and Global Medicine, University of California, San
12 Francisco, San Francisco, CA, USA

13 ²Department of Epidemiology and Biostatistics, University of California, San Francisco,
14 San Francisco, CA, USA

15 ³Division of Experimental Medicine, University of California, San Francisco, San
16 Francisco, CA, USA

17 ⁴Division of Cardiology, University of California, San Francisco, San Francisco, CA, USA

18 ⁵Division of Endocrinology, University of California, San Francisco, San Francisco, CA,
19 USA

20

21 Corresponding Author: Michael Peluso, MD
22 Division of HIV, Infectious Diseases, and Global Medicine
23 2540 23rd St, #4807
24 San Francisco, CA 94110
25 michael.peluso@ucsf.edu

26

27 Keywords: COVID-19, Long COVID, post-acute sequelae of SARS-CoV-2 (PASC), post-
28 COVID condition, cortisol

29 **ABSTRACT**

30 **BACKGROUND:** Low cortisol concentrations have been reported in some people with
31 Long COVID (LC), but more data from diverse cohorts are needed to validate this
32 observation. A subset of people with LC present with symptoms resembling those of
33 myalgic encephalomyelitis/chronic fatigue syndrome (ME/CFS). The objective of this
34 study was to compare cortisol concentrations in those with and without Long COVID, with
35 a particular focus on people experiencing ME/CFS-like Long COVID.

36
37 **METHODS:** We measured plasma cortisol in 200 individuals 3-6 months following a
38 SARS-CoV-2 infection. Banked biospecimens collected between 8 AM-12 PM were used.
39 Participants met the case definition for Long COVID if they had ≥ 1 COVID-attributed
40 symptom at least 3 months after symptom onset. People who did not report any symptoms
41 at least 3 months after symptom onset served as recovered controls. Adapting the 2015
42 Institute of Medicine criteria for ME/CFS, we further defined those with LC resembling
43 ME/CFS (LC-ME).

44
45 **RESULTS:** We found no difference in overall morning cortisol concentrations between
46 people with LC (n=144) and those who fully recovered (n=56) (median 8.9 $\mu\text{g/dL}$ vs. 8.8
47 $\mu\text{g/dL}$, $p=0.97$). Analyses of samples collected between 8-10 AM, however, revealed that,
48 compared to those who fully recovered, cortisol concentrations were lower between 8-9
49 AM for those with LC-ME (median 8.2 vs. 14.8, $p=0.02$), but higher between 9-10 AM for
50 those with severe LC (≥ 5 symptoms) (median 12.4 vs. 8.5, $p=0.009$) and those with LC-
51 ME (median 13.7 vs. 8.5, $p=0.02$).

52
53 **CONCLUSION:** We found no difference in overall morning plasma cortisol concentrations
54 between those with and without Long COVID. Although our data could be suggestive of
55 altered morning cortisol dynamics in a subset of people with Long COVID, longitudinal
56 measures of cortisol in individuals with Long COVID will be critical to further inform the
57 biology of the condition.

58 **BACKGROUND**

59 Long COVID is a multisystem condition characterized by a wide range of symptoms that
60 can persist for months or years after SARS-CoV-2 infection¹. The biological mechanisms
61 underlying Long COVID are incompletely understood. Virus persistence, coagulation
62 dysfunction, and inflammation have all been implicated as potential causes^{2,3}.

63
64 Long COVID is characterized by a variety of different clinical phenotypes and symptom
65 complexes^{2,4}. A subset of people with Long COVID experience fatigue, post-exertional
66 malaise, sleep disturbance, neurocognitive dysfunction, and orthostatic intolerance.
67 These symptoms are also characteristic of myalgic encephalomyelitis, sometimes called
68 chronic fatigue syndrome (ME/CFS)⁵. Both Long COVID and ME/CFS are infection-
69 associated chronic conditions (IACCs), which are believed by many to be set off by an
70 infectious trigger⁶. Determining whether post-COVID ME/CFS represents the same
71 condition as ME/CFS that preceded the COVID-19 pandemic (“pre-pandemic ME/CFS”),
72 and whether they share common biology, remains a key question for the field⁷.

73
74 SARS-CoV-2 exhibits adrenal tropism, and subsequent adrenal damage and
75 inflammation have been shown in patients with COVID-19⁸. Specifically, SARS-CoV-2
76 has been found to replicate in the ACE2 and TMPRSS2 positive cells of the adrenal
77 cortex, resulting in reduced zonation, microthrombi formation, and increased
78 inflammatory infiltrates, which consequently could affect cortisol secretion⁸. Differences
79 in systemic cortisol concentrations have been identified in people with Long COVID,
80 suggesting a dysfunction of the hypothalamic-pituitary-adrenal (HPA) axis⁹ in this
81 condition. One cross-sectional study, for example, revealed significantly lower cortisol in
82 people with Long COVID compared to healthy controls⁹. In fact, cortisol was the single
83 strongest predictor of whether an individual in that study had Long COVID. Other studies,
84 however, have found no evidence for lower cortisol in people with Long COVID^{10,11}.
85 Interestingly, studies of pre-pandemic ME/CFS reveal similarly inconsistent results
86 regarding cortisol, with some providing evidence for lower cortisol concentrations and
87 others not^{12,13,14}. A caveat for the interpretation of all of these studies is that cortisol is
88 secreted in a pulsatile manner and there is significant diurnal variation with the highest

89 concentrations in the morning and lowest at night. Thus, the timing of collection may play
90 an important role in the interpretation of results. In addition, the secretion of endogenous
91 cortisol can be modified by exposure to exogenous glucocorticoids, which are commonly
92 used among the population in general and among some individuals with Long COVID.

93

94 To further investigate these questions, we conducted a pilot study to cross-sectionally
95 measure morning plasma cortisol concentrations in a cohort of 200 highly characterized
96 individuals 3-6 months post-COVID. Our objective was to compare cortisol concentrations
97 in those with and without Long COVID with a particular focus on people experiencing
98 ME/CFS-like Long COVID.

99 **METHODS**

100 *Study Design*

101 In this cross-sectional study, we measured plasma cortisol concentrations in participants
102 3 to 6 months following symptom onset from a SARS-CoV-2 infection. We included
103 participants who had their blood collected between 8 AM and 12 PM.

104

105 *Participants*

106 Participants were volunteers in the University of California, San Francisco (UCSF)-based
107 Long-term Impact of Infection with Novel Coronavirus (LIINC) research program
108 (NCT04362150)¹⁵. Study procedures have been described in detail previously¹⁵. LIINC
109 enrolls participants with test-confirmed SARS-CoV-2 infection at least two weeks
110 following their symptom onset date. Participants are examined and complete an
111 interviewer-administered symptom questionnaire at an initial study visit and
112 approximately every four months thereafter.

113

114 *Case definitions*

115 For these analyses, we defined three groups: a non-Long COVID (nLC) group, a Long
116 COVID (LC) group, and a ME/CFS-like Long COVID (LC-ME) group. The nLC group
117 consisted of participants who did not report any COVID-attributed symptoms in the post-
118 acute phase and were considered to have fully recovered from their infection. We defined
119 Long COVID according to the World Health Organization consensus criteria¹⁶, as one or
120 more COVID-attributed symptom present for more than 3 months following their initial
121 SARS-CoV-2 symptom onset date. We further defined those with Long COVID who met
122 an adaptive version of the 2015 Institute of Medicine ME/CFS criteria⁵ as having LC-ME.
123 These participants reported fatigue, sleep disturbance and neurocognitive dysfunction or
124 orthostatic intolerance. Of note, at the time of this pilot study, a dedicated question
125 regarding post-exertional malaise had not yet been added to the study questionnaire.

126

127 *Measurements*

128 Interviewer-administered questionnaires were used to collect data on Long COVID
129 symptomatology; importantly, symptoms that pre-dated the COVID-19 diagnosis and

130 were unchanged were not recorded as representing Long COVID. Cortisol concentrations
131 ($\mu\text{g/dL}$) were measured using previously banked blood samples using the Siemens
132 Atellica® IM Analyzer. Cortisol was measured at the UCSF Zuckerberg San Francisco
133 General Hospital Clinical Laboratory.

134

135 *Statistical Analyses*

136 Cortisol concentrations between groups were compared using Wilcoxon rank-sum test.
137 We considered a p-value of <0.05 as statistically significant. All analyses were carried out
138 with R software version 4.2.2¹⁷.

139 RESULTS

140 *Study participants*

141 We measured cortisol in 200 participants 3 to 6 months following a SARS-CoV-2 infection.
142 Symptom onset date ranged from March 2020 to October 2022. 144 (72%) participants
143 met our case definition for Long COVID at the post-acute timepoint. In comparison to the
144 nLC group, the Long COVID group had a similar age (median age 48 vs. 44 years, $p=0.5$),
145 distribution of birth sex (50% vs. 56%, $p=0.4$) and percentage who had been vaccinated
146 prior to SARS-CoV-2 infection (48 % vs. 51%, $p=0.9$). A small number of Long COVID
147 participants (3%) reported exogenous glucocorticoid use. Median blood collection time
148 for cortisol measurements was similar for both groups (10:18 AM vs. 10:30 AM).
149 Participant characteristics are shown in **Table 1**.

150

151 *Cross-sectional analysis of morning cortisol concentrations*

152 We first compared morning plasma cortisol concentration ($\mu\text{g/dL}$) aggregated across all
153 sample collection time points between 8 AM and 12 PM (**Fig. 1A**). We found no difference
154 in median morning cortisol between the LC and nLC group (median 8.9 vs. 8.8, $p=0.97$).
155 Cortisol concentrations below the lower limit of normal ($<5 \mu\text{g/dL}$) were found in 14 (9.7%)
156 LC participants and 5 (8.9%) nLC participants.

157

158 *Cross-sectional analysis of cortisol concentrations by hour*

159 Given the dynamic nature of cortisol secretion, we next examined cortisol concentrations
160 stratified by hour of collection (**Fig. 1B**). We observed a non-significant trend for lower
161 cortisol concentrations in those with LC between 8-9 AM ($n=19$), compared those without
162 LC ($n=7$) (median 12.4 vs. 14.8, $p=0.36$). Between 9-10 AM, however, this relationship
163 reversed, and cortisol concentration tended to be higher in the LC group ($n=33$) compared
164 to the nLC group ($n=12$) (median 10.3 vs. 8.5, $p=0.15$), though again these differences
165 were not significant. Cortisol concentrations between 10-11 AM and 11 AM-12 PM were
166 similar in both groups.

167

168

169

170 *Cortisol concentrations by symptom count*

171 We next stratified the LC group into a severe and non-severe group. Participants in the
172 severe LC group reported 5 or more symptoms (n=60), while participants in the non-
173 severe LC reported between 1-4 symptoms (n=84) (**Fig. 1C**). The severe LC group had
174 a non-significant trend towards lower cortisol concentration between 8-9 AM (n=9)
175 (median 9.1) compared to the non-severe LC group (n=13) (median 12.0, p=0.52) and
176 the nLC group (n=7) (median 14.8, p=0.44) However, between 9-10 AM, the severe LC
177 group had the highest cortisol concentrations, which differed significantly from the nLC
178 group (median 12.4 vs. 8.5, p=0.009). Cortisol levels were comparable between all groups
179 after 10 AM.

180

181 *Cortisol concentrations in participants with ME/CFS-like Long COVID*

182 Finally, we conducted an exploratory analysis to determine whether the observed
183 differences were driven by the ME/CFS-like phenotype of Long COVID (**Fig. 1D**). Cortisol
184 concentrations between 8-9 AM were significantly lower in the LC-ME group (n=7)
185 compared to the nLC group (n=12) (median 8.2 vs. 14.8, p=0.02). Conversely, cortisol
186 concentrations between 9-10 AM were significantly higher in the LC-ME group (n=3)
187 compared to the nLC group (n=12) (median 13.7 vs. 8.5, p=0.02). This difference was not
188 observed when comparing the nLC group with those with LC but without ME/CFS (14.8
189 vs. 12.6, p=0.78, 8-9 AM; 8.5 vs. 10.2, p=0.27, 9-10 AM). Cortisol levels were comparable
190 between all groups after 10 AM.

191 **DISCUSSION**

192 Although we were unable to confirm the broad group differences in morning plasma
193 cortisol concentrations between those with and without Long COVID observed in a prior
194 report⁹, we did make several potentially interesting observations that will inform future
195 work. We found that compared to people who had fully recovered from COVID-19, those
196 with Long COVID tended to exhibit cortisol concentrations that were lower between 8-9
197 AM but higher between 9-10 AM. This pattern appears to be driven by a more
198 symptomatic subset of participants, including those with ME/CFS-like symptoms. Taken
199 together, our data are suggestive of altered morning cortisol dynamics in a subset of
200 people with Long COVID. Although the etiology and clinical significance of these findings
201 remains unknown, it suggests a potential physiologic pattern that may distinguish one
202 phenotype of Long COVID and could provide clues as to the pathophysiology driving this
203 debilitating condition.

204
205 In contrast to a prior report⁹, we failed to detect a difference in cortisol concentration in
206 people with Long COVID. This may be explained by differences in cohort characteristics.
207 For example, the median time since acute infection was substantially longer in the prior
208 study than in our cohort (14 months versus 4 months). It could be that this physiologic
209 difference in cortisol concentrations becomes more pronounced over time; this would be
210 consistent with observations in which the disease state and biomarker profiles of
211 ME/CFS, another infection-associated chronic condition, evolves over time¹². Another
212 more likely possibility, however, is related to heterogeneity in sampling collection time.
213 Cortisol concentrations fluctuate during the day, typically peaking early in the morning
214 after waking followed by a rapid decline¹⁸. It is possible that inconsistencies in sample
215 timing, even if relatively minor, could drive observable differences if one group is
216 measured later than another. In fact the prior report did note differences in sampling time
217 between Long COVID and control groups⁹, although the differences did not reach
218 statistical significance.

219
220 Our observation of what may be a different pattern of cortisol secretion in those with
221 ME/CFS-like Long COVID is suggestive of a delayed morning cortisol peak. Although

222 participants in our LC-ME group were not formally diagnosed with ME/CFS, similar
223 examples of alterations in cortisol dynamics can be found the ME/CFS literature^{12,13,19}.
224 For example, one early study measured longitudinal blood cortisol at multiple timepoints
225 throughout the day in patients with ME/CFS and found a reduction in early-morning
226 cortisol¹³. A more recent study found significantly lower salivary cortisol secretion in the
227 morning and flattened cortisol secretion curves at 4 collection times throughout the day
228 among ME/CFS patients compared to healthy controls²⁰. Overall, our findings suggest
229 that further investigation of the patterns of cortisol secretion among those with Long
230 COVID, particularly of the ME/CFS-like phenotype, are warranted.

231
232 This study has several limitations. We did not collect information on the time of
233 awakening, therefore analyses could not adjust for waking time. Therefore, these results
234 could be explained by those with ME/CFS having a later waking time and therefore later
235 peak. Our applied case definition of ME/CFS, while consistent with the 2015 IOM criteria,
236 did not accurately capture post-exertional malaise symptoms because this symptom was
237 inconsistently recorded in the first few years of our study; this may have resulted in
238 misclassification of individuals as having ME/CFS-like Long COVID, although such
239 misclassification would be expected to make it more difficult to observe an effect.
240 Furthermore, our follow-up interval (3-4 months) represents an earlier timescale than is
241 required for a formal diagnosis of ME/CFS (6 months). We also acknowledge small
242 sample sizes when comparing cortisol concentrations cross-sectionally within the group
243 strata in this exploratory analysis.

244
245 While we believe these observations are intriguing, the main limitation of our study is that
246 these cross-sectional findings do not capture the secretory pattern in any one patient. To
247 better understand cortisol dynamics in Long COVID, future studies should focus on
248 longitudinal measurements of cortisol within individuals. For example, performing serum
249 or salivary collection at short intervals over the course of a day would provide a better
250 assessment of the overall secretory patterns. It is also important that future studies take
251 into consideration the many factors that can have a direct impact on HPA axis activity and
252 cortisol secretion, including glucocorticoid use which is particularly prevalent among those

253 with this disease condition. It will be vital to take these factors into account to improve
254 study validity and generalizability of results. **Table 2** outlines some considerations we
255 deem important for future studies.

256
257 Overall, while we could not confirm the dramatic differences in cortisol values observed
258 in prior work, we observed differences in cortisol secretory patterns that suggests that
259 continued efforts to understand pathways related to the HPA axis in Long COVID may be
260 informative. Future efforts will be crucial in eliciting the role of altered cortisol dynamics in
261 individuals with Long COVID and will continue to inform the pathophysiology associated
262 with this condition.

263 **FOOTNOTES**

264 Acknowledgements

265 We are grateful to the study participants and their medical providers. We acknowledge
266 current LIINC clinical study team members Brent Abel, Grace Anderson, Kofi Asare,
267 Tyrine Bailey, Melissa Buitrago, Celina Chang Song, Alexis Clark, Avery Eun, Tony
268 Figueroa, Diana Flores, Yuki Fudotan, Rebecca Hoh, Beatrice Huang, Megan Lew,
269 Michael Luna, Kathleen Bellon Pizzaro, Douglas Robbins, Antonio Rodriguez, Dylan
270 Ryder, Viva Tai, Julian Uy, Meghann Williams, and Andhy Zamora; and current LIINC
271 laboratory team members Belen Altamirano-Poblano, Amanda Buck, Lilian Grimbert, and
272 Brian LaFranchi. We thank Pahul Chhabra, Aidan Donovan, Carrie Forman, Rania
273 Ibrahim, Marine Lyden, Sean Thomas, and Badri Viswanathan for assistance with data
274 entry and review. We also acknowledge all former LIINC clinical, laboratory, and data
275 team members. We thank the UCSF AIDS Specimen Bank for processing specimens and
276 maintaining the LIINC biospecimen repository. We are grateful to Elnaz Eilkhani and
277 Monika Deswal for regulatory support. We are also grateful for the contributions of
278 additional LIINC leadership team members: Matthew Durstenfeld, Priscilla Hsue, Bryan
279 Greenhouse, Ma Somsouk, Isabelle Rodriguez-Barraquer, and Rachel Rutishauser.

280

281 Funding

282 MJP is supported on K23AI157875. The LIINC clinical core is supported by the PolyBio
283 Research Foundation, with additional funding from R01AI141003 (to TJH) and
284 1R01NS136197 (to MJP).

285

286 Conflicts of interest

287 SGD reports consulting for Enanta Pharmaceuticals and Pfizer and reports research
288 support from Aerium Therapeutics outside the submitted work. MJP has received
289 consulting fees from Gilead Sciences, AstraZeneca, BioVie, Apellis Pharmaceuticals, and
290 BioNTech and research support from Aerium Therapeutics and Shionogi, outside the
291 submitted work.

REFERENCES

1. National Academies of Sciences, Engineering, and Medicine. 2024. A Long COVID Definition: A Chronic, Systemic Disease State with Profound Consequences. Washington, DC: The National Academies Press. <https://doi.org/10.17226/27768>.
2. Peluso MJ, Deeks SG. Mechanisms of long COVID and the path toward therapeutics. *Cell*. 2024;187(20):5500-5529. doi:10.1016/j.cell.2024.07.054
3. Davis HE, McCorkell L, Vogel JM, Topol EJ. Long COVID: major findings, mechanisms and recommendations. *Nat Rev Microbiol*. 2023;21(3):133-146. doi:10.1038/s41579-022-00846-2
4. Kenny G, McCann K, O'Brien C, et al. Identification of Distinct Long COVID Clinical Phenotypes Through Cluster Analysis of Self-Reported Symptoms. *Open Forum Infect Dis*. 2022;9(4):ofac060. doi:10.1093/ofid/ofac060
5. Committee on the Diagnostic Criteria for Myalgic Encephalomyelitis/Chronic Fatigue Syndrome, Board on the Health of Select Populations, Institute of Medicine. Beyond Myalgic Encephalomyelitis/Chronic Fatigue Syndrome: Redefining an Illness. National Academies Press (US); 2015. Accessed June 3, 2024. <http://www.ncbi.nlm.nih.gov/books/NBK274235/>
6. Choutka J, Jansari V, Hornig M, Iwasaki A. Unexplained post-acute infection syndromes. *Nat Med*. 2022;28(5):911-923. doi:10.1038/s41591-022-01810-6
7. Peluso MJ, Hanson MR, Deeks SG. Infection-associated chronic conditions: why long COVID is our best chance to untangle Osler's web. *Science Translational Medicine*. 2024; In press.
8. Paul T, Ledderose S, Bartsch H, et al. Adrenal tropism of SARS-CoV-2 and adrenal findings in a post-mortem case series of patients with severe fatal COVID-19. *Nat Commun*. 2022;13(1):1589. doi:10.1038/s41467-022-29145-3
9. Klein J, Wood J, Jaycox JR, et al. Distinguishing features of long COVID identified through immune profiling. *Nature*. 2023;623(7985):139-148. doi:10.1038/s41586-023-06651-y
10. Appelman B, Charlton BT, Goulding RP, et al. Muscle abnormalities worsen after post-exertional malaise in long COVID. *Nat Commun*. 2024;15(1):17. doi:10.1038/s41467-023-44432-3
11. Fleischer M, Szepanowski F, Mausberg AK, et al. Cytokines (IL1 β , IL6, TNF α) and serum cortisol levels may not constitute reliable biomarkers to identify individuals with post-acute sequelae of COVID-19. *Ther Adv Neurol Disord*. 2024;17:17562864241229567. doi:10.1177/17562864241229567

12. Papadopoulos AS, Cleare AJ. Hypothalamic–pituitary–adrenal axis dysfunction in chronic fatigue syndrome. *Nat Rev Endocrinol*. 2012;8(1):22-32. doi:10.1038/nrendo.2011.153
13. Crofford LJ, Young EA, Engleberg NC, et al. Basal circadian and pulsatile ACTH and cortisol secretion in patients with fibromyalgia and/or chronic fatigue syndrome. *Brain Behav Immun*. 2004;18(4):314-325. doi:10.1016/j.bbi.2003.12.011
14. Di Giorgio A, Hudson M, Jerjes W, Cleare AJ. 24-Hour Pituitary and Adrenal Hormone Profiles in Chronic Fatigue Syndrome. *Psychosom Med*. 2005;67(3):433. doi:10.1097/01.psy.0000161206.55324.8a
15. Study Details | Long-term Impact of Infection With Novel Coronavirus (COVID-19) | ClinicalTrials.gov. Accessed June 3, 2024. <https://clinicaltrials.gov/study/NCT04362150>
16. Soriano JB, Murthy S, Marshall JC, Relan P, Diaz JV. A clinical case definition of post-COVID-19 condition by a Delphi consensus. *Lancet Infect Dis*. 2022;22(4):e102-e107. doi:10.1016/S1473-3099(21)00703-9
17. Posit team (2023). RStudio: Integrated Development Environment for R. Posit Software, PBC, Boston, MA. URL <http://www.posit.com/>.
18. Adam EK, Hawkey LC, Kudielka BM, Cacioppo JT. Day-to-day dynamics of experience–cortisol associations in a population-based sample of older adults. *Proc Natl Acad Sci U S A*. 2006;103(45):17058-17063. doi:10.1073/pnas.0605053103
19. Nater UM, Youngblood LS, Jones JF, et al. Alterations in Diurnal Salivary Cortisol Rhythm in a Population-Based Sample of Cases With Chronic Fatigue Syndrome. *Psychosom Med*. 2008;70(3):298-305. doi:10.1097/PSY.0b013e3181651025
20. Chang CJ, Hung LY, Kogelnik AM, et al. A Comprehensive Examination of Severely Ill ME/CFS Patients. *Healthcare*. 2021;9(10):1290. doi:10.3390/healthcare9101290
21. Granger DA, Hibel LC, Fortunato CK, Kapelewski CH. Medication effects on salivary cortisol: Tactics and strategy to minimize impact in behavioral and developmental science. *Psychoneuroendocrinology*. 2009;34(10):1437-1448. doi:10.1016/j.psyneuen.2009.06.017
22. Wolfram M, Bellingrath S, Kudielka BM. The cortisol awakening response (CAR) across the female menstrual cycle. *Psychoneuroendocrinology*. 2011;36(6):905-912. doi:10.1016/j.psyneuen.2010.12.006
23. Baker FC, Driver HS. Circadian rhythms, sleep, and the menstrual cycle. *Sleep Med*. 2007;8(6):613-622. doi:10.1016/j.sleep.2006.09.011

24. Boivin DB, Boudreau P, Kosmadopoulos A. Disturbance of the Circadian System in Shift Work and Its Health Impact. *J Biol Rhythms*. 2022;37(1):3-28. doi:10.1177/07487304211064218
25. Wang R, Kogler L, Derntl B. Sex differences in cortisol levels in depression: A systematic review and meta-analysis. *Front Neuroendocrinol*. 2024;72:101118. doi:10.1016/j.yfrne.2023.101118
26. Kelestimur F. The endocrinology of adrenal tuberculosis: the effects of tuberculosis on the hypothalamo-pituitary-adrenal axis and adrenocortical function. *J Endocrinol Invest*. 2004;27(4):380-386. doi:10.1007/BF03351067
27. Popescu M, Terzea DC, Carsote M, et al. COVID-19 infection: from stress-related cortisol levels to adrenal glands infarction. *Rom J Morphol Embryol*. 2022;63(1):39-48. doi:10.47162/RJME.63.1.03
28. Parrott AC, Montgomery C, Wetherell MA, Downey LA, Stough C, Scholey AB. MDMA, cortisol, and heightened stress in recreational ecstasy users. *Behav Pharmacol*. 2014;25(5-6):458-472. doi:10.1097/FBP.0000000000000060
29. Stephens MAC, Wand G. Stress and the HPA Axis. *Alcohol Res Curr Rev*. 2012;34(4):468-483.
30. al'Absi M, DeAngelis B, Fiecas M, Budney A, Allen S. Effects of regular cannabis and nicotine use on acute stress responses chronic nicotine, but not cannabis use, is associated with blunted adrenocortical and cardiovascular responses to stress. *Psychopharmacology (Berl)*. 2022;239(5):1551-1561. doi:10.1007/s00213-022-06087-8
31. Doane LD, Kremen WS, Eaves LJ, et al. Associations Between Jet Lag and Cortisol Diurnal Rhythms After Domestic Travel. *Health Psychol Off J Div Health Psychol Am Psychol Assoc*. 2010;29(2):117-123. doi:10.1037/a0017865
32. Sagmeister MS, Harper L, Hardy RS. Cortisol excess in chronic kidney disease – A review of changes and impact on mortality. *Front Endocrinol*. 2023;13:1075809. doi:10.3389/fendo.2022.1075809
33. Tana MM, Alao H, Morris N, et al. Fatigued Patients with Chronic Liver Disease Have Subtle Aberrations of Sleep, Melatonin and Cortisol Circadian Rhythms. *Fatigue Biomed Health Behav*. 2018;6(1):5-19. doi:10.1080/21641846.2018.1408539
34. Ahmed A, Rabbitt E, Brady T, et al. A Switch in Hepatic Cortisol Metabolism across the Spectrum of Non Alcoholic Fatty Liver Disease. *PLoS ONE*. 2012;7(2). doi:10.1371/journal.pone.0029531

35. Lovato CM, Thévenot T, Borot S, et al. Decreased maximal cortisol secretion rate in patients with cirrhosis: Relation to disease severity. *JHEP Rep.* 2021;3(3). doi:10.1016/j.jhepr.2021.100277
36. Dhillon WS, Kong WM, Le Roux CW, et al. Cortisol-binding globulin is important in the interpretation of dynamic tests of the hypothalamic--pituitary--adrenal axis. *Eur J Endocrinol.* 2002;146(2):231-235. doi:10.1530/eje.0.1460231

Table 1. Characteristics of study participants.

Characteristic	Long Covid (n=144)	No Long Covid (n=56)	Overall (n=200)
Median age, years (IQR)	44 (34 – 56)	48 (38 – 55)	43 (35-56)
Female Birth Sex	81 (56%)	28 (50%)	109 (55%)
Median BMI (IQR)	26 (22 – 31)	25 (22 – 31)	26 (22 – 31)
Race / Ethnicity			
Hispanic/Latino	26 (19%)	9 (16%)	35 (18%)
White	90 (65%)	33 (60%)	123 (62%)
Black/African American	3 (2%)	3 (5%)	6 (3%)
Asian	17 (12%)	9 (16%)	26 (13%)
Pacific Islander/Native Hawaiian	1 (1%)	1 (2%)	2 (1%)
American Indian or Alaska Native	2 (2%)	0 (0%)	2 (1%)
Unknown/Declined	5 (4%)	1 (1%)	6 (3%)
Hospitalized	14 (10%)	6 (11%)	20 (10%)
HIV Seropositive	20 (14%)	10 (18%)	30 (15%)
Vaccinated at time of symptom onset	74 (51%)	27(48%)	101 (51%)
Median number of days post symptom onset (IQR)	122 (113-134)	123 (115 – 131)	123 (113 – 133)
Median collection time* (IQR)	10:30 AM (9:30 AM – 11:09 AM)	10:18 AM (9:20 AM – 10:58 AM)	10:28 AM (9:28 AM – 11:05 AM)
Symptom count (IQR)	4 (2-8)	0 (0-0)	2 (0 – 6)

IQR = interquartile range. *Collection time of blood sample used to measure plasma cortisol concentrations.

Table 2. Proposed approaches or considerations for studies evaluating cortisol secretion dynamics.

Confounding Variable	Proposed Approach or Considerations
Medications	Obtain a full medication list and carefully document participants' medications, especially those which may alter cortisol secretion (e.g., glucocorticoids, levothyroxine, etc.) ²¹ . Obtain full medication list, as many participants may not be aware that a medication they are taking is a glucocorticoid. Consider exclusions based on current or recent use.
Phase in menstrual cycle	If applicable, record the participant's menstrual cycle phase. Some data suggest cortisol awakening response levels increase during ovulation ²² and an increased glucocorticoid ²³ response in the luteal phase.
Sleep cycle disturbances	Record participants' usual sleep patterns. Abnormal sleep patterns, like those often associated with shift work, alter the body's circadian rhythms and may affect the timing of cortisol secretion ²⁴ .
Mental health	Carefully document participants' mental health comorbidities. Individuals with depression have been shown to have a hyperactive HPA axis ²⁵ .
Intercurrent infections	Screen for and document any recent or intercurrent infections. Cortisol secretion may be altered in chronic ²⁶ and acute infections, including COVID-19 ²⁷ .
Substance use history	Document recent history of substance use. Alcohol, nicotine and other drugs have been implicated in dysregulation of cortisol secretion ^{28,29,30} .
Recent travel across time zones	Exclude participants who have recently traveled across time zones ³¹ .
Comorbidities	Document history of liver or kidney disease, which may directly impact cortisol secretion and/or metabolism ^{32,33,34,35} .
Abnormal cortisol binding globulin (CBG)	Consider testing samples for differences in quantity of CBG, which may vary significantly between individuals ³⁶ .

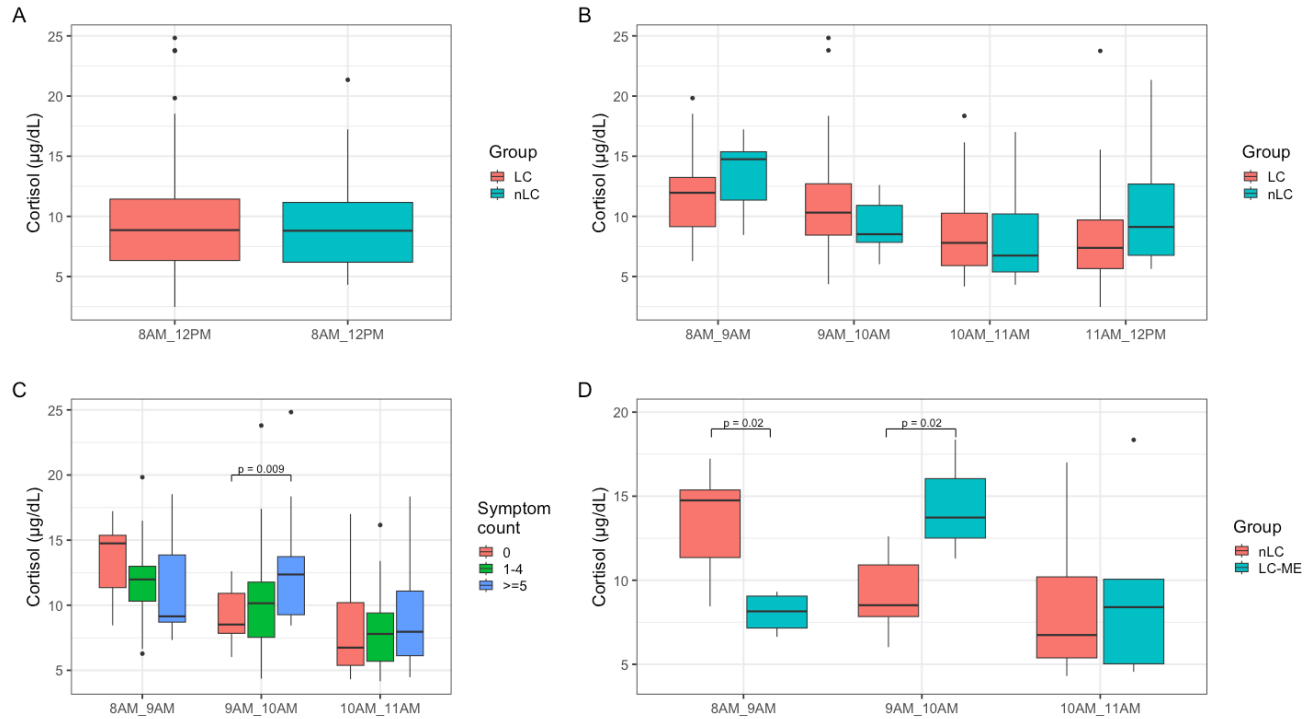


Figure 1. A. Morning cortisol concentration ($\mu\text{g/dL}$) in participants with Long COVID compared to those without. **B.** Cortisol concentrations stratified by hourly time bin. **C.** Cortisol concentrations stratified by symptom count and hourly time bin. Statistically significant group comparisons are indicated. **D.** Cortisol concentrations in LC-ME compared to those without stratified by hourly time bin. Statistically significant group comparisons are indicated. Abbreviations: LC = Long COVID; nLC = non-Long COVID (e.g., post-COVID but fully recovered); LC-ME = ME/CFS-like Long COVID according to the adapted 2015 Institute of Medicine criteria.