

1 **Trajectories of mHealth-tracked mental health symptoms and**
2 **their predictors in chronic pelvic pain**

3 Emily L. Leventhal, B.A.,^{1,2} Nivedita Nukavarapu, Ph.D.,^{1,2} Noemie Elhadad, Ph.D.,³ Suzanne
4 Bakken, Ph.D., RN, FAAN, FACMI, FIAHSI,⁴ Michal Elovitz, M.D.,⁶ Robert Hirten, M.D.,⁷
5 Jovita Rodrigues, M.S.,^{1,2} Matteo Danieletto, Ph.D.,^{1,2} Kyle Landell, B.A.,^{1,2} and Ipek Ensari,
6 Ph.D.^{1,2}

7
8 ¹*Department of Artificial Intelligence and Human Health, Icahn School of Medicine at Mount*
9 *Sinai, New York, NY, USA*

10 ²*Hasso Plattner Institute for Digital Health Mount Sinai, New York, NY, USA*

11 ³*Department of Biomedical Informatics, Columbia University Irving Medical Center, New York,*
12 *NY, USA*

13 ⁴*Columbia University School of Nursing, Columbia University Irving Medical Center, New York,*
14 *NY, USA*

15 ⁶*Department of Obstetrics, Gynecology and Reproductive Sciences, Icahn School of Medicine at*
16 *Mount Sinai, New York, NY, USA*

17 ⁷*The Dr. Henry D. Janowitz Division of Gastroenterology, Icahn School of Medicine at The*
18 *Mount Sinai Hospital, New York, NY, USA*

21 **Abstract**

22 **Background.** Female chronic pelvic pain disorders (CPPDs) affect 1 in 7 women
23 worldwide and are characterized by psychosocial comorbidities, including reduced quality of life
24 and 2-10 fold increased risk of depression and anxiety. Despite its prevalence and morbidity,
25 CPPDs are often inadequately managed with few patients experiencing relief from any medical
26 intervention. Characterizing mental health symptom trajectories and lifestyle predictors of
27 mental health is a starting point to enhancing patient self-efficacy in managing symptoms. Here,
28 we investigate the association between mental health, pain, and physical activity (PA) in females
29 with CPPD and demonstrate a method for handling multi-modal mobile health (mHealth) data.

30 **Method.** The study sample included 4,270 person-level days and 799 person-level weeks of data
31 from CPPD participants (N=76). Participants recorded PROMIS global mental health (GMH)
32 and physical functioning, and pain weekly for 14 weeks using a research mHealth app, and
33 moderate-to-vigorous PA (MVPA) was passively collected via activity trackers. **Data analysis.**
34 We used penalized functional regression (PFR) to regress weekly GMH-T (GMH-T) on MVPA
35 and weekly pain outcomes, while adjusting for baseline measures, time in study, and the random
36 intercept of the individual. We converted 7-day MVPA data into a single smooth using spline
37 basis functions to model the potential non-linear relationship. **Results:** MVPA was a significant,
38 curvilinear predictor of GMH-T ($p < 0.001$), independent of pain measures and prior psychiatric
39 diagnosis. Physical functioning was positively associated with GMH-T, while pain was
40 negatively associated with GMH-T ($\beta = 2.24$, $\beta = -1.16$, respectively; $p < 0.05$). **Conclusion:** These
41 findings suggest that engaging in MVPA is beneficial to the mental health of females with

42 CPPD. Additionally, this study demonstrates the potential of ambulatory mHealth-based data
43 combined with functional models for delineating inter-individual and temporal variability.

44 **Keywords**

45 Chronic pelvic pain; digital health; functional data modeling; global mental health.

46 **Corresponding author**

47 Emily Leventhal, B.A., 3 E 101st Street, New York, NY 10029,

48 emily.leventhal@icahn.mssm.edu

49 **Introduction**

50 Described as a “neglected reproductive health morbidity,” chronic pelvic pain (CPP) is a
51 highly debilitating condition that affects between 5.7% and 26.6% of women worldwide.¹⁻³ CPP,
52 which encompasses complex CPP disorders (CPPDs) such as endometriosis, adenomyosis, and
53 fibroids, is characterized by non-cyclic pain in the pelvis or abdomen that lasts for at least 6
54 months and leads to functional disability or the necessity for medical intervention.³⁻⁵ Its severity
55 is underscored by its associated physical, psychological, and emotional, and social
56 consequences.^{4,5}

57 The strong psychosocial impact of CPPDs contributes to their morbidity. For example,
58 individuals with CPPDs are more likely to experience reduced quality of life, emotional well-
59 being, productivity, and sexual function compared to the general population.⁴ Additionally,
60 CPPD patients have a significantly higher risk of comorbid psychiatric disorders.^{4,6,7} For
61 example, individuals with CPPDs have been reported to experience depressive disorders at a
62 prevalence of 2 to 10 times that of the general population and anxiety disorders 3 to 6 times that

63 of the general population.⁴ Because chronic pain is tightly linked to mental health problems,
64 investigation of potentially modifiable predictors of mental well-being in individuals with
65 CPPDs may be a starting point for comprehensively managing and treating CPPD patients.⁸

66 Despite its prevalence and burden, CPP is often inadequately managed, with less than
67 half of patients experiencing pain relief from any medical treatment.^{6,9} Patient self-management,
68 which encompasses active efforts to manage pain and its effects on physical and emotional
69 function, is a common chronic pain care model intervention, and it has been associated with
70 significant improvement in symptoms.^{10,11} Further, Center for Disease Control (CDC) guidelines
71 state that non-opioid and non-pharmacologic therapies should be prioritized for chronic pain
72 management.^{12,13} Non-pharmacological self-management strategies, especially those that target
73 mental health outcomes of CPPD patients, are needed for effective personalized treatment of
74 CPPD.

75 Physical activity (PA), and exercise, defined as planned, structured, and repetitive PA
76 with the goal of improved health or fitness, have been demonstrated to be effective pain self-
77 management for both reducing pain severity and improving psychological function in chronic
78 pain patients.^{11,14} Experts recommend that chronic pain patients exercise on a regular schedule on
79 the premise that avoiding activity during pain and increasing intensity later may lead to pain
80 flares.⁴ Importantly, exercise is a modifiable behavior that can also improve pain self-efficacy,
81 defined as the confidence in one's ability to function effectively while in pain, which is
82 associated with improved quality of life.^{15,16} Further, for chronic pain patients with comorbid
83 psychiatric conditions, exercise may improve mood, depression, and anxiety symptoms.⁴ A

84 previous study with individuals with endometriosis estimated a small but statistically significant
85 favorable effect of exercise on pain severity.¹⁷ However, this study relied on self-reported
86 exercise, which is limited in its ability to capture more granular PA parameters (eg, step counts,
87 intensity-level).¹⁷ While most of the evidence connecting PA to psychosocial improvement has
88 been from other chronic pain conditions, yoga has previously been demonstrated to be
89 efficacious for improving pain and quality of life for patients with endometriosis.⁴ The impact of
90 broader PA on mental health in patients with CPP specifically remains to be investigated, with a
91 focus on using longitudinal data to capture potentially meaningful trends over time.

92 CPPDs and their symptomatic patterns are notably heterogeneous in clinical presentation
93 both between patients and within-individuals over time.¹⁸ Capturing these fluctuations under
94 ecologically valid circumstances can help improve our understanding of the dynamic unfolding
95 of these symptoms and their potential predictors. In the context of health behaviors such as PA,
96 data from mobile health (mHealth) technologies (eg, smartphone apps, trackers) combined with
97 longitudinal analytic techniques can help elucidate symptom associations with psychosocial
98 outcomes in CPP.^{7,18} For example, there may be non-linear associations and cumulative effects
99 in these longitudinal data that are not possible to capture via linear modeling approaches. In sum,
100 flexible techniques can be particularly useful when considering variables that differ in sampling
101 frequencies, missingness patterns, modality, and temporal complexity, which is often the case
102 with mHealth data.

103 Functional regression models, which are a part of the family of generalized additive
104 models (GAMs), constitute one such approach.¹⁹ In a functional regression framework, the entire

105 data curve is considered as the unit of analysis, instead of discrete data points in a set of
106 longitudinal data. This is particularly useful for handling PA data from wearables, rather than
107 aggregating multiple data points per individual,²⁰ as they allow investigating the associations
108 between scalar and functional variables with different time intervals. One example of a scenario
109 relevant to this study is consideration of continuous or daily PA data with weekly self-reported
110 survey data, in a repeated-measures design. This results in a data structure where each weekly
111 questionnaire corresponds to 7 days of PA data leading up to the survey data. A functional
112 regression model considers the PA data as a weekly data curve rather than aggregating the entire
113 week into a summary score and thus preserves the temporal pattern within the data. This can
114 reveal important information that may be lost otherwise, such as periods of inactivity or bursts of
115 activity, which could be related to mental health.^{4,21}

116 Accordingly, this study aims to characterize the patterns of association between self-
117 reported mental health symptoms and their predictors in CPPDs, with a focus on modifiable
118 lifestyle factors. Specifically, this overall aim includes investigation of 1) between- and within-
119 individual fluctuations in weekly self-reported mental health, and 2) possible modifiable and trait
120 predictors of weekly mental health. We hypothesized that there would be significant variability
121 in the mental health both between and within individuals and that PA would be a positive non-
122 linear predictor of mental health.

123 **Methods**

124 **Study Design and Procedures**

125 The study design and procedures were approved by the IRB of the Icahn School of
126 Medicine at Mount Sinai (ISMMS; IRB# STUDY-22-01002). This is a secondary analysis of the
127 data from an ongoing larger study that aims to design, develop, and evaluate CPPD-specific
128 mHealth measures from patient generated health data with high complexity and temporality
129 using non-linear distributed lag and functional data modeling (NIH/NICHD: R01HD108263). It
130 uses an observational study design to collect 90 days of data on patient self-tracked symptoms
131 via a research mHealth app (ehive²²) and passively collected activity data using activity trackers
132 from participants. All participants used the ehive research study app for providing the baseline
133 and weekly data on overall health, symptoms, well-being and health behaviors, as well as for
134 receiving prompts and reminders about the study.²² Participants were instructed to wear a Fitbit
135 for the duration of the study.

136 **Study Sample**

137 The study sample included individuals who met the following eligibility criteria for the
138 parent study: 1) females who menstruate currently, between the ages of 18 and 64, 2) self-
139 reported CPPD based on clinician diagnosis, 3) experience of CPP for at least 6 months, and 4)
140 ability to read and write in English. Exclusion criteria include: 1) current pregnancy, a birth in
141 the past 6 months, or planning pregnancy during the months of the study and 2) major diseases or
142 comorbidities (eg, active cancer, acute coronary syndrome within the past 3 months) that might
143 confound the outcomes of the primary pelvic pain-related condition. Participants were recruited
144 from all campuses of the Mount Sinai Health System (MSHS) and Columbia University Irving

145 Medical Center (CUIMC) via email advertisements and on the myChart by EPIC mobile app for
146 MSHS patients.

147 **Enrollment**

148 Interested patients reached out to the study coordinator at Mount Sinai for screening and
149 enrollment, after which they were onboarded and oriented to the study app and data collection
150 protocols. All participants were mailed a Fitbit Inspire 2 device and instructed to use for the
151 duration of the study (90 days). Participants were remunerated \$15 for every 2 weeks of data
152 collection and \$20 for the final week (ie, up to \$120 in total for completing 90 days of data
153 collection). All participants provided informed consent prior to enrolling in the study.

154 **Study Measures**

155 *Primary Outcomes*

156 Self-reported mental health was assessed every week using the PROMIS Global Mental
157 Health Questionnaire (GMH; 2a, v1.2).²³ The GMH includes 2 questions: 1) “In general, how
158 would you rate your mental health, including your mood and your ability to think?” 2) “In
159 general, how would you rate your satisfaction with your social activities and relationships?” Both
160 questions have a 5-point multiple choice response scale (1-not at all, 5-very much) and the
161 responses are added to compute the total score on the GMH (range 2-10). Higher scores
162 represent better mental health.²³ The two-item GMH survey provides a brief measure of mental
163 health that has been found to be both reliable and have construct validity.²³ Scores from the
164 GMH survey have been positively associated with other self-reported outcomes including overall
165 quality of life and physical functioning, and negatively correlated with fatigue, anxiety, anger,

166 depressive symptoms, and chronic conditions (e.g., liver disease, kidney disease, hypertension,
167 etc.).²³ We converted raw GMH scores to population-standardized GMH scores (T-scores)
168 according to the PROMIS Global Health scoring manual by standardizing the raw total score to a
169 mean of 50 and a standard deviation (SD) of 10.²⁴ GMH T-scores (GMH-T) are further
170 categorized as excellent (>55), very good (48-55), good (40-47), fair (29-39), and poor (<29).²⁵

171 *Predictors*

172 **Physical activity.** Daily minutes of moderate-to-vigorous intensity PA (MVPA) and step
173 counts were obtained from the wrist-worn Fitbit devices. Participants were instructed to wear
174 their devices continuously for the study duration. The study app (ehive) allows the user to link
175 their account with their Fitbit device,²² which enables regular daily data syncing on the backend
176 of the app. Fitbit uses its proprietary algorithms for detection of step counts and activity
177 intensities. We collected 6,341 days of physical activity data for 78 participants. For wear time
178 validation, we relied on the commonly used standard “10-hour minimum wear” rule, in which a
179 valid day is defined as at least 10 hours of non-zero activity counts.²⁶⁻²⁸ Ten hours of wear has
180 been shown to be sufficient to estimate total daily physical activity during non-sleep time.²⁹
181 There were 4,301 valid days of Fitbit data for 76 participants. Days with unrealistically low
182 activity counts (eg, <500 steps in a day; n=14) were removed in accordance with similar cutoffs
183 that have been used in the past to define a valid day, although we used a more conservative
184 cutoff.^{26,27} This resulted in 4,287 days of physical activity data for 76 participants. If there were
185 more than 7 days of Fitbit data in between survey responses (ie, if a participant waited more than
186 7 days before completing the next survey), we only considered the first 7 days of Fitbit activity

187 data to avoid sparsity in the penalized functional regression (PFR) model (described below). 77
188 days of activity data measured more than 7 days after a survey response were removed for this
189 reason. The final dataset had 4,270 days of data for 76 participants.

190 **Physical functioning.** Weekly physical functioning scores were measured using the
191 PROMIS physical function survey (4a, v1.0).³⁰ Physical functioning is the self-reported
192 capability of performing everyday physical activities. The score evaluates functioning of upper
193 extremities, lower extremities, central regions, and activities of daily living. The 4-item PROMIS
194 survey assesses the extent to which individuals find difficulty with physical tasks (5-without any
195 difficulty to 1-unable to do). Scores range from 4 to 20, with higher scores indicating better
196 physical functioning. We used the physical functioning T-scores in the analyses, which are
197 standardized to a mean of 50 and a SD of 10 based on a representative population distribution.³⁰

198 **Pain.** We measured weekly pain levels using the VAS pain intensity item from the short-
199 form McGill Pain Questionnaire (MPQ-VAS).³¹ The MPQ-VAS asks participants to rate the
200 intensity of their present pain intensity on a scale of 0 (no pain) to 100 (worst imaginable pain).³²
201 This type of VAS-based pain assessment is commonly used as a standard practice in clinical
202 settings to evaluate patient pain status and treatment outcomes.^{33,34}

203 **Other covariates.** Data on personal demographics and general health were collected via
204 a baseline questionnaire on the ehive app. We collected age, marital status, ethnicity, and
205 employment status from the demographics survey. In addition, we used prior psychiatric
206 diagnosis (“Have you ever been diagnosed with a psychiatric diagnosis by a provider?”) as a
207 covariate from the general health survey.

208 **Data analysis**

209 *Descriptive and bivariate analyses*

210 First, we performed descriptive analyses and investigated bivariate associations between
211 the weekly-measured survey items. Given the repeated-measures design, we use both person-
212 level means (ie, a participant's mean score across the 14 weeks) and overall sample means (ie,
213 mean of means) where necessary to report the overall study average scores from the daily (ie,
214 steps, MVPA) and weekly (ie, pain, physical functioning T-score, GMH-T) measures. To
215 analyze the GMH-T, we converted the mean GMH-T for each participant to its corresponding
216 GMH category (eg, fair, good, excellent, etc.), and computed the percent of participants in each
217 category.²⁵ To evaluate sample GMH-T and physical functioning T-scores against known
218 population means, we used a one-sample T-test to compare the sample means to the population
219 means. We then computed repeated-measures correlations between GMH-T, physical
220 functioning, MPQ-VAS, and the sum of MVPA over 7 days using the rmcrr R package, which
221 evaluates the within-individual association of paired measurements taken two or more times
222 longitudinally.³⁵

223 *Multivariable regression analysis of GMH predictors*

224 To investigate the potential predictors of GMH-T scores at the week level, we
225 implemented PFR modeling using the R refund library.²⁰ PFR models are flexible in numerous
226 ways that are particularly useful for the data in this study. First, they allow for entire data curves
227 to be units of analysis as opposed to individual data points. Next, they accommodate different
228 sampling intervals in the outcomes vs predictors, ie, week-level outcome (eg, GMH-T) and

229 week-level (eg, pain, physical functioning) and day-level (eg, MVPA) predictors. Instead of
230 aggregating multiple day-level MVPA values for each week, this feature of the PFR allows for
231 the preservation of temporal variability in MVPA over a week. Third, it allows specification of
232 random intercepts (ie, individual participants), which is useful for both accommodating a
233 repeated measures design and for investigation of potential between- vs within-individual
234 variability in the outcome of interest (ie, GMH-T scores).

235 We regressed GMH-T on MVPA while considering MPQ-VAS, PROMIS physical
236 functioning, age, marital status, employment status, and prior psychiatric diagnosis. We further
237 adjusted for time in study using month-level cyclical encoding, in which each date is mapped
238 into a cyclic coordinate system using sine-cosine waves and allows the models to infer the
239 distance between dates based on their sine-cosine coordinates. We converted 7-day MVPA data
240 into smooths with up to 7 knots using the tensor product basis function³⁶ to model the potential
241 non-linear relationship between GMH-T and daily PA. We similarly included the time covariate
242 as a functional smooth with up to 7 knots.²⁰ We scaled MPQ-VAS, PROMIS physical
243 functioning, and age by mean-centering each variable and dividing by its standard deviation. We
244 included participant and week in study as random effects. Finally, other categorical variables (ie,
245 psychiatric diagnosis, employment status, and marital status) were included as person-level
246 linear covariates.²⁰ We used a generalized additive model as the fitter to estimate the model and
247 restricted maximum likelihood as the smoothing parameter estimation method, which are the
248 default recommended methods for the function.²⁰

249

Results

250 **Study sample**

251 Participants (n=76) provided 799 weeks of survey and 4,270 days of activity data in total
252 for analysis. Participants had a mean age of 35 years and were mostly employed (76%). Most
253 participants identified as White (42%) or Hispanic or Latino (17%). In our sample, 28% had at
254 least one prior diagnosis of a psychiatric condition, including anxiety and mood disorders (Table
255 1). The CPPD diagnoses included endometriosis (N=51), adenomyosis (N=1), uterine fibroids
256 (N=2), interstitial cystitis (N=1), inflammatory bowel syndrome (3), and inflammatory pelvic
257 dysfunction (N=1).

258 **Descriptive and bivariate analyses**

259 The overall sample means of the scores from the daily and weekly measures are reported
260 in Table 2. Thirty-nine percent of the participants, on average, reported scores that corresponded
261 to “fair” mental health, with another 39% of the participants on average reporting “good” mental
262 health (Table 2). The mean GMH-T was 42.166 (95% CI: 40.363-43.969), which is 7.83 SDs
263 below the population mean (ie, M=50, “very good”)²³ and significantly different ($t=-8.658, p <$
264 $.001$; Figure 1). The mean physical functioning T-score was 45.19 (95% CI: 43.52-46.853),
265 which is 0.48 SDs below the population mean (ie, M=50; Figure 1; $t = -5.758, p < .001$).

266 To characterize the PA patterns in the sample, we compared participants’ activity levels
267 to the published recommendations and CDC/HHS PA guidelines for adults with respect to steps
268 and MVPA.^{37,37-39} On average, participants accumulated 8,313 steps and 38 minutes of MVPA
269 per day (Table 2). Forty-three percent of the sample engaged in fewer than 7,500 daily steps,
270 which is the lower threshold recommended for being considered “sufficiently active” (Figure

271 2a).^{38,39} Similarly, 40.9% accumulated fewer than 150 minutes of weekly MVPA recommended
272 by the PA Guidelines (Figure 2b).⁴⁰

273 To inspect the bivariate associations between weekly measures, we computed repeated
274 measures correlations between GMH-T and the other variables. GMH-T were positively
275 correlated with weekly MVPA ($p<.05$), and physical function T-score ($p<.01$), while they were
276 negatively correlated with MPQ-VAS ($p<.001$; Figure 3). Weekly MVPA was additionally
277 positively correlated with physical functioning T-score ($p<.05$) but was not significantly
278 correlated with MPQ-VAS.

279 **PFR model**

280 We fitted a PFR model to the data to investigate cumulative and non-linear effects of
281 MVPA on the weekly GMH-T. The best fitting final model explained 72.6% of the variance in
282 GMH-T ($R^2=0.65$). The smooth of MVPA and time on GMH-T indicated a significant non-linear
283 relationship (Table S1; Table S2; $\text{edf}=2.23$, $F=18.99$, $p<.001$). Predicted GMH-T increased with
284 increasing daily MVPA minutes (Figure 4a). Over time, the largest positive effect of MVPA on
285 predicted GMH-T as reported at the end of the week was a few days prior (~day 4). The positive
286 effect of MVPA on GMH-T reported at the end of the week diminished after day 4, suggesting
287 the positive effects of MVPA lagged by a couple of days. Weekly MPQ-VAS was a significant
288 negative predictor of GMH-T ($\beta=-1.16$, $\text{SE}=0.50$, $t=-2.34$, $p<.05$), while physical functioning T-
289 score was a significant positive predictor of GMH-T (Figure 4b; Table S3; $\beta=2.24$, $\text{SE}=0.598$,
290 $t=3.75$, $p<.001$). For demographic factors, age was negatively associated with GMH-T ($\beta=-1.20$,
291 $\text{SE}=0.46$, $t=-2.58$, $p<.05$), while being employed and married were positively associated with

292 GMH-T ($\beta=4.01$, $SE=1.09$, $t=3.67$, $p<.001$; $\beta=3.60$, $SE=0.86$, $t=4.20$, $p<.001$). Prior psychiatric
293 diagnosis was not a significant predictor of weekly GMH. The random effect of participant was
294 significant (Figure 4c; $edf=33.43$, $F=2.76$, $p<0.001$). The random effect of week and the
295 cyclically encoded sine and cosine functions of month were not significant.

296 **Discussion**

297 In this study, we leveraged ambulatory mHealth-tracked mental health, pain, and physical
298 activity data to characterize longitudinal self-reported mental health patterns of individuals with
299 CPPDs. Our results indicate a positive, non-linear relationship between PA and mental health,
300 independent of prior psychiatric diagnosis or other pain-related factors, with considerable
301 variability both between and within participants over time. To our knowledge, this study
302 provides the first line of evidence on the positive effect of PA on mental health in females with
303 CPPDs using repeated measures data collected in real time. We further report lower scores of
304 mental health and physical functioning compared to the general population, as well as lower PA
305 levels than those recommended by the PA guidelines.

306 Our cohort had a 28% incidence of prior psychiatric conditions and lower average global
307 mental health compared to the general population. Chronic pain, and specifically CPPDs, has
308 been established as a strong predisposing factor for psychiatric conditions, due to both the
309 psychosocial impact of chronic pain and common neurobiological vulnerabilities and genetic
310 factors between chronic pain and mood.^{4,6,41,42} CPPD patients with comorbid psychiatric
311 conditions are more likely to incur higher health care costs, experience lower quality of life,
312 endure increased disability, and are more likely to be prescribed opioids.⁴ Additionally, our

313 findings add to the literature documenting the worsened mental health of CPPD patients as a
314 whole compared to the general population.^{4,23,42} In the 2019 National Health Interview Survey,
315 those with chronic pain had a 23.9% prevalence of co-occurring anxiety and/or depression
316 symptoms, whereas the population without chronic pain had a prevalence of 4.9%.⁴² Given the
317 high incidence of psychiatric co-morbidities and the generally low mental health among CPPD
318 patients, it is important to treat mental health as part of comprehensive chronic pain management
319 and continue to determine ways to aid patients to manage their symptoms. As such, here, we
320 investigated how lifestyle factors may modify the association of CPP with poorer mental health
321 outcomes.

322 Our findings suggest that many females with CPPDs do not reach nationally
323 recommended activity levels, and moreover, that engaging in MVPA is beneficial for the mental
324 health of CPPD patients. The PA levels found in this sample are consistent with previous studies
325 indicating that individuals with CPPDs have lower PA levels,⁴³ though data on CPPDs are
326 scarce. One longitudinal study using accelerometers indicated that MVPA negatively mediated
327 the relationship between chronic pain and risk of mental disorders, although this study did not
328 focus on CPP.⁴⁴ Increased MVPA in individuals with chronic pain was associated with decreased
329 anxiety and depression symptoms, whereas light intensity PA did not have this effect.⁴² While
330 previous studies have established the connection between MVPA and mental health in chronic
331 pain, this is the first study to establish the relationship between PA and mental health in the
332 context of CPP by using passively-obtained data from activity trackers.¹⁷

333 Our findings further indicate that increased pain is associated with worsened GMH, while
334 increased physical functioning was associated with improved GMH. Though pain and depression
335 or anxiety have been noted to have a bidirectional relationship, there is more evidence that pain
336 is a risk factor for mental health problems than the inverse.⁴ Additionally, a longitudinal study
337 focused on musculoskeletal conditions found that improvements in physical functioning were
338 associated with improved anxiety symptoms, although it was not associated with improved
339 depression symptoms.⁴⁵ The relationship between physical functioning and mental health in CPP
340 has not been well defined to this point, however, one previous longitudinal study on
341 endometriosis reported that functional pain disability did not predict later emotional distress.⁴⁶

342 With respect to demographic factors as potential predictors, increased age was associated
343 with worsened GMH, while prior psychiatric diagnosis was not a significant predictor. Age may
344 be a proxy for years of experience with the chronic pain condition or severity of the condition. In
345 this study, we did not have a survey item assessing time of initial diagnosis, although this may be
346 possible in the future by linking mobile health studies with electronic health records (EHRs).
347 Over time, chronic pain may become more difficult to treat due to structural and functional
348 neuroplastic changes that eventually become irreversible and insensitive to treatment.⁴¹ From a
349 psychosocial standpoint, the economic consequences of health care costs and loss of productivity
350 may accumulate over time.⁴¹ It will be important to assess how length of time of living with
351 chronic pain impacts mental health in the future. Interestingly, diagnosis with a prior psychiatric
352 condition, including mood and anxiety disorders, was not a significant predictor of GMH. This
353 may suggest that some individuals with prior psychiatric diagnoses may not be actively

354 experiencing symptoms, or alternatively, that this sample has a large number of participants with
355 undiagnosed psychiatric conditions that are actively experiencing symptoms.

356 We observed substantial between- and within-individual variability in mental health
357 scores in the sample, underscoring the importance of personalized approaches to care. Predicted
358 average GMH-T varied greatly between individuals as shown by the random intercepts. CPPDs
359 are notoriously heterogeneous in pain symptomatology, and it follows that mental health would
360 exhibit similar variability among and within participants.⁷ As such, it is important to use
361 individualized approaches, such as that which may be achieved with mHealth, to
362 comprehensively understand the complexity of CPP. Due to their heterogeneous clinical
363 presentation and differing etiologies, CPPDs are often non-responsive to treatment, and a
364 personalized approach is necessary for the successful management of CPPD. To better
365 understand how to manage the mental health of CPPD patients, we should continue to study
366 modifiable lifestyle factors, as was done here with PA, that may alter the poor mental health
367 outcomes associated with CPP. This study demonstrates the potential of using ambulatory
368 mHealth-based data combined with functional data methods to delineate inter-individual and
369 temporal variability in symptoms of chronic conditions.

370 There are numerous strengths of this work. First, we focus on a patient population that
371 has been under-studied (ie, CPPDs) and currently still not well-understood as a cluster of
372 disorders with overlapping symptomatology. While endometriosis, the most common underlying
373 primary diagnosis for a CPPD, has been receiving more attention recently, our sample also
374 included those less-studied CPP conditions (eg, adenomyosis, fibroids, inflammatory pelvic

375 disease). Next, implementation of functional data methods and generalized additive modeling
376 using smooths provide robust, flexible approaches for handling the complex patient-generated
377 health data from mHealth technologies. The PFR models in this context facilitate the evaluation
378 of complex relationships between outcomes and their predictors in instances where data
379 sampling frequency differs between the outcomes and predictors, or between different predictors.
380 As mHealth use is becoming more ubiquitous for conducting research, expanding upon the
381 available methods will enable fully harnessing the information from these data. Third, our
382 analyses were based on frequently-sampled prospective data of up to 14 weeks from the study
383 participants. This is a strength of the data design as most studies to date are limited to
384 convenience samples of retrospective data with much less frequency of data points.

385 Nevertheless, we acknowledge the limitations of this study. Although we had 799 person-
386 level weeks for analysis, 76 participants is a relatively modest sample size in comparison to
387 large, nationally-representative cohort studies. Similarly, the sample was somewhat
388 homogeneous with respect to demographic factors including employment status and education
389 levels. Third, despite our careful inspection of the missing data and implementing cautious
390 filtering criteria to prevent potentially erroneous inference from the data, Fitbit's proprietary
391 algorithms do not always enable as informed decisions regarding the missing data as do some
392 other devices, such as research grade trackers that allow access to the raw acceleration data. To
393 circumvent these issues, we conducted a series of sensitivity analyses to assess the pattern of
394 missingness in the data, as well as the possible influence of missingness on the model results.
395 Results (not reported herein) indicated no significant bias, suggesting a missing-at-random

396 (MAR) pattern, or change in model point estimates. Finally, most of the participants had
397 endometriosis as their primary CPPD, therefore we are not able to delineate differences in mental
398 health trajectories among different disorders within CPPD.

399 **Conclusions**

400 mHealth-enabled direct patient input and passive tracking via wearables enables the
401 capturing of real-world data to improve our understanding of inter-individual and temporal
402 variability in mental health symptoms and factors that may improve mental health. By leveraging
403 patient-tracked mental health and pain outcomes combined with passively-obtained activity data
404 from CPPD patients, we demonstrate a positive, non-linear relationship between PA and mental
405 health in CPP.

406 **Ethics approval and informed consent**

407 The study was approved by the Institutional Review Board (IRB) of the Icahn School of
408 Medicine at Mount Sinai (IRB# STUDY-22-01002) and all participants provided informed
409 consent.

410 **Data availability**

411 The data collection for the parent grant is currently ongoing. After completion of the
412 active grant period, the data produced in the present study will be made available upon
413 reasonable request to the corresponding author.

414 **Funding**

415 This study was supported by a grant award from the Eunice Kennedy Shriver National
416 Institute Of Child Health & Human Development of the National Institutes of Health (Award

417 Number: R01HD108263, PI=Ensari). The content does not necessarily represent the official
418 views of the National Institutes of Health. Additionally, this research was supported by the T32
419 grant 1T32GM146636.

420 **Authors' contributions**

421 All authors contributed significantly to the work presented in this manuscript, including
422 the conception, study design, execution, acquisition of data, analysis and interpretation. Each
423 author reviewed this article and agree to take responsibility for the contents of this article.

424 **References**

- 425 1. Latthe P, Latthe M, Say L, Gülmezoglu M, Khan KS. WHO systematic review of prevalence
426 of chronic pelvic pain: a neglected reproductive health morbidity. *BMC Public Health*.
427 2006;6(1):177. doi:10.1186/1471-2458-6-177
- 428 2. Ahangari A. Prevalence of Chronic Pelvic Pain Among Women: An Updated Review. *Pain*
429 *Physician*. 2014;2;17(2;3):E141-E147. doi:10.36076/ppj.2014/17/E141
- 430 3. Hutton D, Mustafa A, Patil S, et al. The burden of Chronic Pelvic Pain (CPP): Costs and
431 quality of life of women and men with CPP treated in outpatient referral centers. Raimondo
432 D, ed. *PLOS ONE*. 2023;18(2):e0269828. doi:10.1371/journal.pone.0269828
- 433 4. Till SR, As-Sanie S, Schrepf A. Psychology of Chronic Pelvic Pain: Prevalence,
434 Neurobiological Vulnerabilities, and Treatment. *Clin Obstet Gynecol*. 2019;62(1):22-36.
435 doi:10.1097/GRF.0000000000000412
- 436 5. Ayorinde AA, Macfarlane GJ, Saraswat L, Bhattacharya S. Chronic Pelvic Pain in Women:
437 An Epidemiological Perspective. *Womens Health*. 2015;11(6):851-864.

438 doi:10.2217/whe.15.30

439 6. Meltzer-Brody S, Leserman J. Psychiatric Comorbidity in Women with Chronic Pelvic Pain.

440 *CNS Spectr.* 2011;16(2):29-35. doi:10.1017/S1092852912000156

441 7. Till SR, Nakamura R, Schrepf A, As-Sanie S. Approach to Diagnosis and Management of

442 Chronic Pelvic Pain in Women. *Obstet Gynecol Clin North Am.* 2022;49(2):219-239.

443 doi:10.1016/j.ogc.2022.02.006

444 8. Sheng J, Liu S, Wang Y, Cui R, Zhang X. The Link between Depression and Chronic Pain:

445 Neural Mechanisms in the Brain. *Neural Plast.* 2017;2017:1-10. doi:10.1155/2017/9724371

446 9. The Initial Management of Chronic Pelvic Pain. Published online 2012.

447 10. Kerns RD, Burgess DJ, Coleman BC, et al. Self-Management of Chronic Pain:

448 Psychologically Guided Core Competencies for Providers. *Pain Med.* 2022;23(11):1815-

449 1819. doi:10.1093/pm/pnac083

450 11. Leonardi M, Horne AW, Vincent K, et al. Self-management strategies to consider to combat

451 endometriosis symptoms during the COVID-19 pandemic. *Hum Reprod Open.*

452 2020;2020(2):hoaa028. doi:10.1093/hropen/hoaa028

453 12. Nonopioid Therapies for Pain Management | Overdose Prevention | CDC.

454 13. CDC Clinical Practice Guideline for Prescribing Opioids for Pain — United States, 2022 |

455 MMWR.

456 14. Geneen LJ, Moore RA, Clarke C, Martin D, Colvin LA, Smith BH. Physical activity and

457 exercise for chronic pain in adults: an overview of Cochrane Reviews. Cochrane Pain,

458 Palliative and Supportive Care Group, ed. *Cochrane Database Syst Rev.* 2017;2020(2).

- 459 doi:10.1002/14651858.CD011279.pub3
- 460 15. Gilanyi YL, Wewege MA, Shah B, et al. Exercise Increases Pain Self-efficacy in Adults
461 With Nonspecific Chronic Low Back Pain: A Systematic Review and Meta-analysis. *J*
462 *Orthop Sports Phys Ther.* 2023;53(6):335-342. doi:10.2519/jospt.2023.11622
- 463 16. Kalapurakkal S, A. Carpino E, Lebel A, E. Simons L. “Pain Can’t Stop Me”: Examining
464 Pain Self-Efficacy and Acceptance as Resilience Processes Among Youth With Chronic
465 Headache. *J Pediatr Psychol.* 2015;40(9):926-933. doi:10.1093/jpepsy/jsu091
- 466 17. Ensari I, Lipsky-Gorman S, Horan EN, Bakken S, Elhadad N. Associations between physical
467 exercise patterns and pain symptoms in individuals with endometriosis: a cross-sectional
468 mHealth-based investigation. *BMJ Open.* 2022;12(7):e059280. doi:10.1136/bmjopen-2021-
469 059280
- 470 18. Ensari I, Pichon A, Lipsky-Gorman S, Bakken S, Elhadad N. Augmenting the Clinical Data
471 Sources for Enigmatic Diseases: A Cross-Sectional Study of Self-Tracking Data and Clinical
472 Documentation in Endometriosis. *Appl Clin Inform.* 2020;11(05):769-784. doi:10.1055/s-
473 0040-1718755
- 474 19. Muller HG, Wu Y, Yao F. Continuously additive models for nonlinear functional regression.
475 *Biometrika.* 2013;100(3):607-622. doi:10.1093/biomet/ast004
- 476 20. Goldsmith J, Bobb J, Crainiceanu CM, Caffo B, Reich D. Penalized Functional Regression. *J*
477 *Comput Graph Stat.* 2011;20(4):830-851. doi:10.1198/jcgs.2010.10007
- 478 21. Manning JR, Notaro GM, Chen E, Fitzpatrick PC. Fitness tracking reveals task-specific
479 associations between memory, mental health, and physical activity. *Sci Rep.*

- 480 2022;12(1):13822. doi:10.1038/s41598-022-17781-0
- 481 22. Hirten RP, Danieleto M, Landell K, et al. Development of the ehive Digital Health App:
482 Protocol for a Centralized Research Platform. *JMIR Res Protoc*. 2023;12:e49204.
483 doi:10.2196/49204
- 484 23. Hays RD, Schalet BD, Spritzer KL, Cella D. Two-item PROMIS® global physical and
485 mental health scales. *J Patient-Rep Outcomes*. 2017;1(1):2. doi:10.1186/s41687-017-0003-8
- 486 24. Global Health Scoring Manual. Published online August 15, 2021.
- 487 25. Elsmann EBM, Roorda LD, Crins MHP, Boers M, Terwee CB. Dutch reference values for the
488 Patient-Reported Outcomes Measurement Information System Scale v1.2 - Global Health
489 (PROMIS-GH). *J Patient-Rep Outcomes*. 2021;5(1):38. doi:10.1186/s41687-021-00314-0
- 490 26. Master H, Annis J, Huang S, et al. Association of step counts over time with the risk of
491 chronic disease in the All of Us Research Program. *Nat Med*. 2022;28(11):2301-2308.
492 doi:10.1038/s41591-022-02012-w
- 493 27. Perry AS, Annis JS, Master H, et al. Association of Longitudinal Activity Measures and
494 Diabetes Risk: An Analysis From the National Institutes of Health *All of Us* Research
495 Program. *J Clin Endocrinol Metab*. 2023;108(5):1101-1109. doi:10.1210/clinem/dgac695
- 496 28. Beagle AJ, Tison GH, Aschbacher K, Olgin JE, Marcus GM, Pletcher MJ. Comparison of
497 the Physical Activity Measured by a Consumer Wearable Activity Tracker and That
498 Measured by Self-Report: Cross-Sectional Analysis of the Health eHeart Study. *JMIR*
499 *MHealth UHealth*. 2020;8(12):e22090. doi:10.2196/22090
- 500 29. Troiano RP, Berrigan D, Dodd KW, Mâsse LC, Tilert T, Mcdowell M. Physical Activity in

- 501 the United States Measured by Accelerometer. *Med Sci Sports Exerc.* 2008;40(1):181-188.
502 doi:10.1249/mss.0b013e31815a51b3
- 503 30. Rose M, Bjorner JB, Gandek B, Bruce B, Fries JF, Ware JE. The PROMIS Physical
504 Function item bank was calibrated to a standardized metric and shown to improve
505 measurement efficiency. *J Clin Epidemiol.* 2014;67(5):516-526.
506 doi:10.1016/j.jclinepi.2013.10.024
- 507 31. Melzack R. The short-form McGill pain questionnaire. *Pain.* 1987;30(2):191-197.
508 doi:10.1016/0304-3959(87)91074-8
- 509 32. Hawker GA, Mian S, Kendzerska T, French M. Measures of adult pain: Visual Analog Scale
510 for Pain (VAS Pain), Numeric Rating Scale for Pain (NRS Pain), McGill Pain Questionnaire
511 (MPQ), Short-Form McGill Pain Questionnaire (SF-MPQ), Chronic Pain Grade Scale
512 (CPGS), Short Form-36 Bodily Pain Scale (SF-36 BPS), and Measure of Intermittent and
513 Constant Osteoarthritis Pain (ICOAP). *Arthritis Care Res.* 2011;63(S11).
514 doi:10.1002/acr.20543
- 515 33. Lukacz ES, Lawrence JM, Burchette RJ, Luber KM, Nager CW, Galen Buckwalter J. The
516 use of Visual Analog Scale in urogynecologic research: A psychometric evaluation. *Am J*
517 *Obstet Gynecol.* 2004;191(1):165-170. doi:10.1016/j.ajog.2004.04.047
- 518 34. Creinin MD. Pain Associated With Cervical Priming for First-Trimester Surgical Abortion:
519 A Randomized Controlled Trial. *Obstet Gynecol.* 2021;138(4):680-680.
520 doi:10.1097/AOG.0000000000004552
- 521 35. Bakdash JZ, Marusich LR. Repeated Measures Correlation. *Front Psychol.* 2017;8:456.

- 522 doi:10.3389/fpsyg.2017.00456
- 523 36. Simon Wood <simon.wood@r-project.org>. mgcv: Mixed GAM Computation Vehicle with
524 Automatic Smoothness Estimation. Published online October 4, 2000:1.9-1.
525 doi:10.32614/CRAN.package.mgcv
- 526 37. Leavitt MO. 2008 Physical Activity Guidelines for Americans.
- 527 38. Tudor-Locke C, Craig CL, Thyfault JP, Spence JC. A step-defined sedentary lifestyle index:
528 <5000 steps/day. *Appl Physiol Nutr Metab*. 2013;38(2):100-114. doi:10.1139/apnm-2012-
529 0235
- 530 39. Tudor-Locke C, Hatano Y, Pangrazi RP, Kang M. Revisiting “How Many Steps Are
531 Enough?” *Med Sci Sports Exerc*. 2008;40(7):S537-S543.
532 doi:10.1249/MSS.0b013e31817c7133
- 533 40. *Physical Activity Guidelines for Americans, 2nd Edition*. US Department of Health and
534 Human Services; 2018.
- 535 41. Fine PG. Long-Term Consequences of Chronic Pain: Mounting Evidence for Pain as a
536 Neurological Disease and Parallels with Other Chronic Disease States. *Pain Med*.
537 2011;12(7):996-1004. doi:10.1111/j.1526-4637.2011.01187.x
- 538 42. De La Rosa JS, Brady BR, Ibrahim MM, et al. Co-occurrence of chronic pain and
539 anxiety/depression symptoms in U.S. adults: prevalence, functional impacts, and
540 opportunities. *Pain*. 2024;165(3):666-673. doi:10.1097/j.pain.0000000000003056
- 541 43. Sachs MK, Dedes I, El-Hadad S, et al. Physical Activity in Women with Endometriosis: Less
542 or More Compared with a Healthy Control? *Int J Environ Res Public Health*.

- 543 2023;20(17):6659. doi:10.3390/ijerph20176659
- 544 44. Chen J. The associations of chronic pain and 24-h movement behaviors with incident mental
545 disorders: evidence from a large-scale cohort study. Published online 2024.
- 546 45. Zhang W, Singh SP, Clement A, Calfee RP, Bijsterbosch JD, Cheng AL. Improvements in
547 Physical Function and Pain Interference and Changes in Mental Health Among Patients
548 Seeking Musculoskeletal Care. *JAMA Netw Open*. 2023;6(6):e2320520.
549 doi:10.1001/jamanetworkopen.2023.20520
- 550 46. Dowding C, Mikocka-Walus A, Skvarc D, et al. The temporal effect of emotional distress
551 on psychological and physical functioning in endometriosis: A 12-month prospective study.
552 *Appl Psychol Health Well-Being*. 2023;15(3):901-918. doi:10.1111/aphw.12415
- 553

554 Table 1. Study sample demographics.

555

Variable	N	Mean or %
Age (years)	72	35
Sex	76	
... female	76	100%
... male	0	0%
Employment status	75	
... employed	57	76%
... other	7	9%
... unemployed	11	15%
Marital status	76	
... divorce	6	8%
... married	35	46%
... single	35	46%
Psychiatric diagnosis	76	
... None	55	72%
... At least 1	21	28%
Race/Ethnicity	76	
... asian	8	11%
... black	11	14%
... hispanic or latino	13	17%
... mixed	7	9%
... unknown	5	7%
... white	32	42%

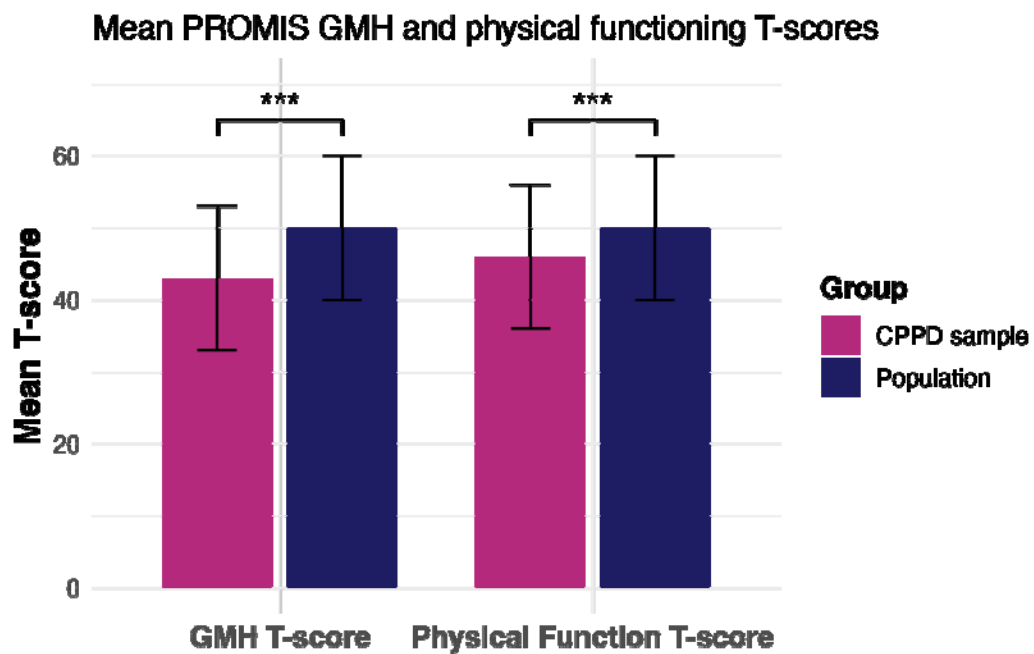
556

557

558 Table 2. Average weekly and daily measures across the study. The average was taken of the
559 participant means for each repeated measure.

Variable	N	Mean or %
Mean MVPA	76	38
Mean steps	76	8313
Mean MPQ-VAS	75	34
Mean phys. func. T-score	73	45
Mean GMH T-score	75	42
Mean GMH T Category	75	
... Poor	3	4%
... Fair	29	39%
... Good	29	39%
... Very Good	8	11%
... Excellent	6	8%

560



561
562 **Figure 1**

563 - -

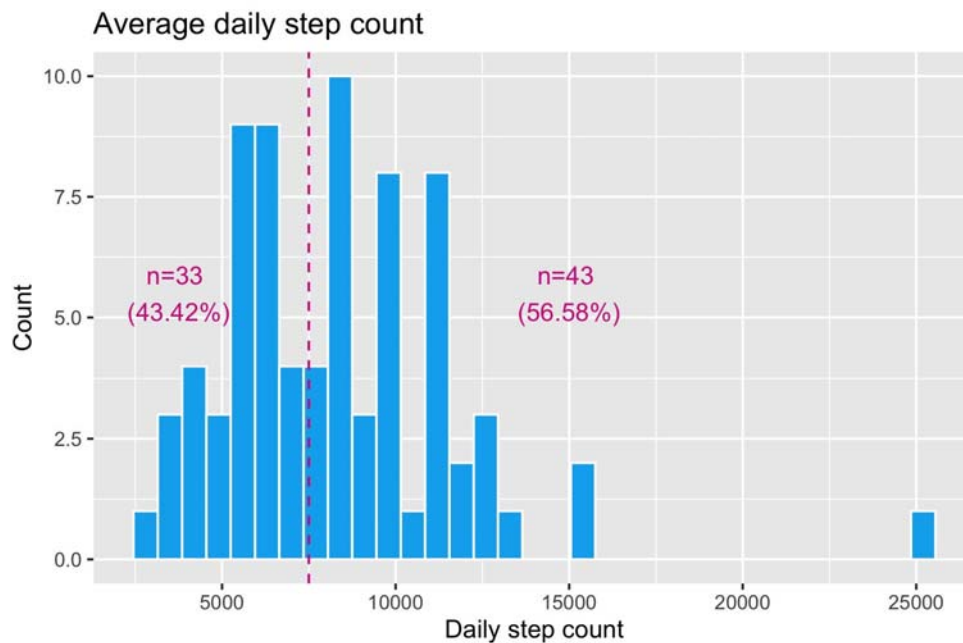
564 - =42.166, 95% CI: 40.363-43.969, M=50, $t=-8.658$, $p < .001$) and physical

565 - =45.19, 95% CI: 43.52-46.853, M=50, $t = -5.758$, $p < .001$) means were

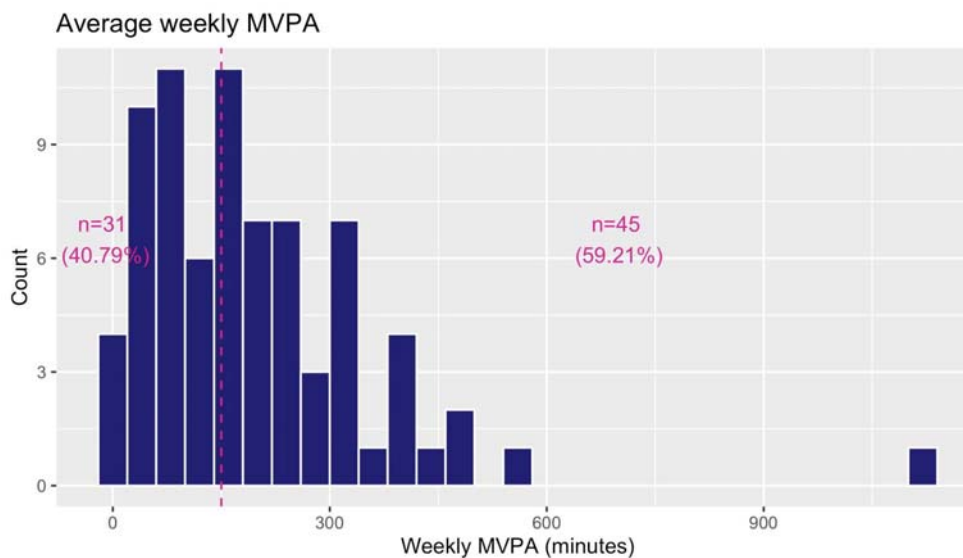
566 significantly different than the general population.

567
568
569

570 A.

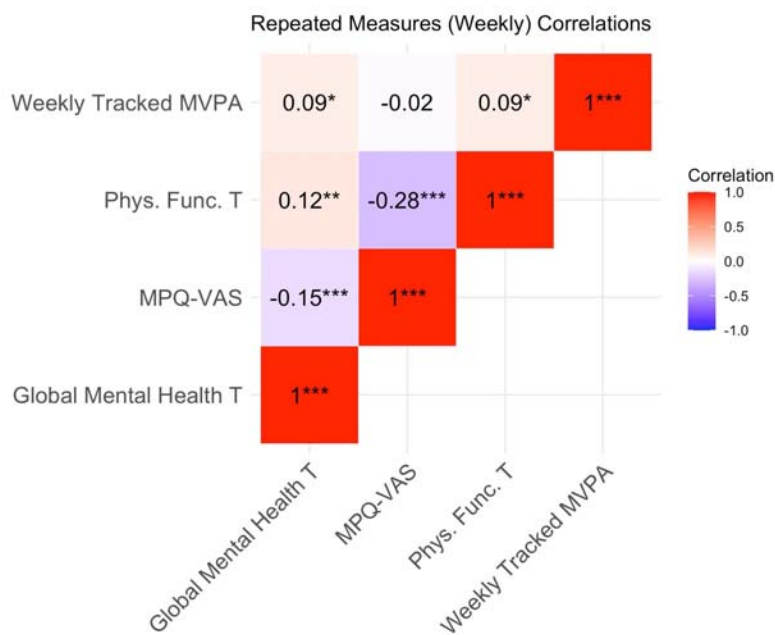


571 B.
572



573 **Figure 2.** Mean participant **A)** daily step count and **B)** mean weekly MVPA minutes compared
574 to nationally recommended activity levels. The y-axis represents the number of participants.
575 Dashed lines represent the recommended levels (7500 steps, 150 MVPA minutes). The values
576 represent the number of individuals who fell above and below these nationally recommended
577

578 values.



579
580 **Figure 3.** Repeated measures correlations for weekly measures. MVPA=moderate-to-vigorous
581 physical activity; Phys. Func. T = physical functioning T-score; MPQ-VAS=McGill Pain
582 Questionnaire-VAS; Global Mental Health T=GMH-T

583

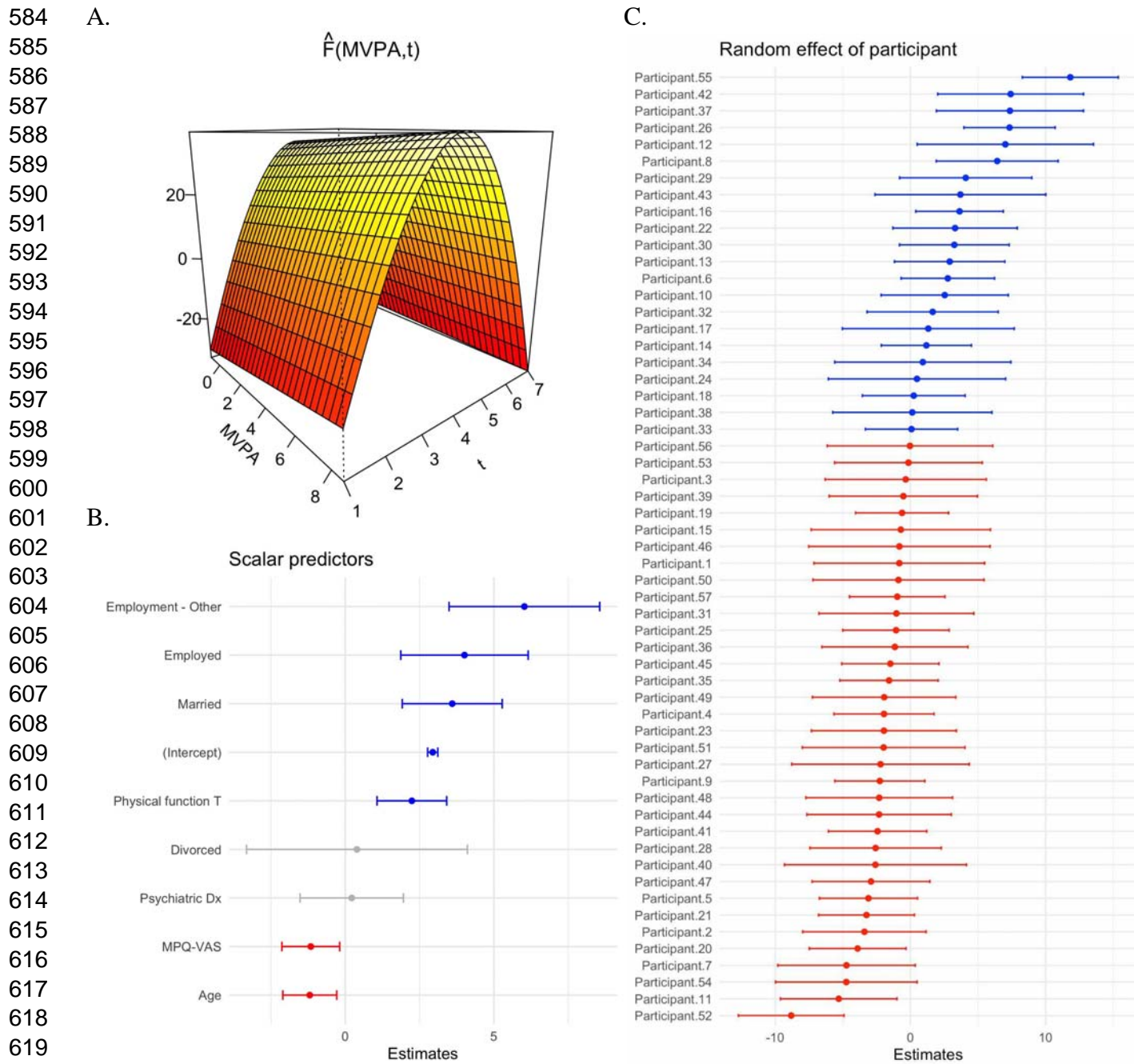


Figure 4. Results from the PFR model. **A)** The smooth effect of MVPA on GMH-T over time.

The MVPA axis is scaled. The y-axis represents predicted GMH-T and is scaled according to

624 predicted sample GMH-T mean. **B)** Coefficients and confidence intervals for scalar predictors of
625 the model. **C)** Random effect of participant, with each dot representing predicted mean GMH-T
626 for that participant.
627

628
629
630
631

Supplemental Tables

Table S1. Smooth predictors of the PFR model.

Predictor	edf	Ref.df	F	p-value
t2(MVPA.tmat,MVPA.omat):L.MVPA	2.23222202	2.40665028	18.9885386	4.0841E-06
s(month_cos.tmat):L.month_cos	2.00001858	2.00003559	0.48641865	0.61566209
s(month_sin.tmat):L.month_sin	2.5591852	2.8159533	0.63612865	0.59048914
s(Participant)	33.4252443	57	2.75714802	1.5399E-06
s(Week)	5.2859E-05	1	5.0264E-06	0.96005532

632
633
634

Table S2. Point estimates for smooth terms.

Predictor	Estimate	SE
scale(pfr_age)	-1.1946	0.4629
t2(MVPA.tmat,MVPA.omat):L.MVPA.1	0	0.0012
t2(MVPA.tmat,MVPA.omat):L.MVPA.2	0	0.0012
t2(MVPA.tmat,MVPA.omat):L.MVPA.3	0	0.0012
t2(MVPA.tmat,MVPA.omat):L.MVPA.4	0	0.0012
t2(MVPA.tmat,MVPA.omat):L.MVPA.5	0	0.0012
t2(MVPA.tmat,MVPA.omat):L.MVPA.6	0	0.0012
t2(MVPA.tmat,MVPA.omat):L.MVPA.7	0	0.0012
t2(MVPA.tmat,MVPA.omat):L.MVPA.8	0	0.0012
t2(MVPA.tmat,MVPA.omat):L.MVPA.9	0	0.0012
t2(MVPA.tmat,MVPA.omat):L.MVPA.10	0	0.0012

t2(MVPA.tmat,MVPA.omat):L.MVPA.11	0	0.0012
t2(MVPA.tmat,MVPA.omat):L.MVPA.12	0	0.0012
t2(MVPA.tmat,MVPA.omat):L.MVPA.13	0	0.0012
t2(MVPA.tmat,MVPA.omat):L.MVPA.14	0	0.0012
t2(MVPA.tmat,MVPA.omat):L.MVPA.15	0	0.0012
t2(MVPA.tmat,MVPA.omat):L.MVPA.16	0	0.0012
t2(MVPA.tmat,MVPA.omat):L.MVPA.17	0	0.0012
t2(MVPA.tmat,MVPA.omat):L.MVPA.18	0	0.0012
t2(MVPA.tmat,MVPA.omat):L.MVPA.19	0	0.0012
t2(MVPA.tmat,MVPA.omat):L.MVPA.20	0	0.0012
t2(MVPA.tmat,MVPA.omat):L.MVPA.21	0	0.0012
t2(MVPA.tmat,MVPA.omat):L.MVPA.22	0	0.0012
t2(MVPA.tmat,MVPA.omat):L.MVPA.23	0	0.0012
t2(MVPA.tmat,MVPA.omat):L.MVPA.24	0	0.0013
t2(MVPA.tmat,MVPA.omat):L.MVPA.25	0	0.001
t2(MVPA.tmat,MVPA.omat):L.MVPA.26	0	0.001
t2(MVPA.tmat,MVPA.omat):L.MVPA.27	0	0.001
t2(MVPA.tmat,MVPA.omat):L.MVPA.28	0	0.001
t2(MVPA.tmat,MVPA.omat):L.MVPA.29	0	0.0012
t2(MVPA.tmat,MVPA.omat):L.MVPA.30	0	0.001
t2(MVPA.tmat,MVPA.omat):L.MVPA.31	0	0.001
t2(MVPA.tmat,MVPA.omat):L.MVPA.32	0	0.001

t2(MVPA.tmat,MVPA.omat):L.MVPA.33	0	0.001
t2(MVPA.tmat,MVPA.omat):L.MVPA.34	0	0.001
t2(MVPA.tmat,MVPA.omat):L.MVPA.35	1.0687	0.0317
t2(MVPA.tmat,MVPA.omat):L.MVPA.36	0.0002	0.1151
t2(MVPA.tmat,MVPA.omat):L.MVPA.37	-0.123	0.0037
t2(MVPA.tmat,MVPA.omat):L.MVPA.38	0.0028	0.115
t2(MVPA.tmat,MVPA.omat):L.MVPA.39	-1.3998	0.0415
t2(MVPA.tmat,MVPA.omat):L.MVPA.40	0.0332	0.1141
t2(MVPA.tmat,MVPA.omat):L.MVPA.41	-0.2206	0.0066
t2(MVPA.tmat,MVPA.omat):L.MVPA.42	-0.0057	0.1145
t2(MVPA.tmat,MVPA.omat):L.MVPA.43	10.0619	0.2981
t2(MVPA.tmat,MVPA.omat):L.MVPA.44	0.0442	0.1032
t2(MVPA.tmat,MVPA.omat):L.MVPA.45	0.2974	0.0781
t2(MVPA.tmat,MVPA.omat):L.MVPA.46	0.5677	0.2809
t2(MVPA.tmat,MVPA.omat):L.MVPA.47	-0.5547	0.0165
t2(MVPA.tmat,MVPA.omat):L.MVPA.48	0.6484	0.387
s(pfr_month_cos.tmat):L.pfr_month_cos.1	-0.0001	0.2867
s(pfr_month_cos.tmat):L.pfr_month_cos.2	-0.0001	0.2627
s(pfr_month_cos.tmat):L.pfr_month_cos.3	-0.0002	0.623
s(pfr_month_cos.tmat):L.pfr_month_cos.4	0.0003	0.7492
s(pfr_month_cos.tmat):L.pfr_month_cos.5	0.0002	0.5422
s(pfr_month_cos.tmat):L.pfr_month_cos.6	-1.6094	1.8354

s(pfr_month_cos.tmat):L.pfr_month_cos.7	-3.1231	5.9218
s(pfr_month_sin.tmat):L.pfr_month_sin.1	-8.7097	71.675
s(pfr_month_sin.tmat):L.pfr_month_sin.2	-1.0972	65.6637
s(pfr_month_sin.tmat):L.pfr_month_sin.3	0.0284	156.1398
s(pfr_month_sin.tmat):L.pfr_month_sin.4	12.0161	187.3235
s(pfr_month_sin.tmat):L.pfr_month_sin.5	7.3255	135.9212
s(pfr_month_sin.tmat):L.pfr_month_sin.6	19.7849	30.3586
s(pfr_month_sin.tmat):L.pfr_month_sin.7	6.1957	25.4692
s(pfr_participant).1	-0.8195	3.2219
s(pfr_participant).2	-3.3994	2.33
s(pfr_participant).3	-0.3429	3.0436
s(pfr_participant).4	-1.9507	1.8907
s(pfr_participant).5	-3.1004	1.8541
s(pfr_participant).6	2.7715	1.7634
s(pfr_participant).7	-4.7251	2.5942
s(pfr_participant).8	6.4256	2.302
s(pfr_participant).9	-2.2581	1.7001
s(pfr_participant).10	2.5425	2.4007
s(pfr_participant).11	-5.2992	2.2013
s(pfr_participant).12	7.0277	3.3273
s(pfr_participant).13	2.9095	2.0834
s(pfr_participant).14	1.1844	1.7011

s(pfr_participant).15	-0.7041	3.3855
s(pfr_participant).16	3.6399	1.6518
s(pfr_participant).17	1.327	3.2448
s(pfr_participant).18	0.2492	1.9396
s(pfr_participant).19	-0.6143	1.7548
s(pfr_participant).20	-3.9002	1.8232
s(pfr_participant).21	-3.2474	1.81
s(pfr_participant).22	3.3082	2.3462
s(pfr_participant).23	-1.9553	2.7352
s(pfr_participant).24	0.4892	3.3464
s(pfr_participant).25	-1.0614	2.0089
s(pfr_participant).26	7.3399	1.7229
s(pfr_participant).27	-2.2067	3.3497
s(pfr_participant).28	-2.5714	2.4798
s(pfr_participant).29	4.0968	2.4943
s(pfr_participant).30	3.2534	2.0713
s(pfr_participant).31	-1.0354	2.924
s(pfr_participant).32	1.6512	2.4759
s(pfr_participant).33	0.0849	1.7427
s(pfr_participant).34	0.9219	3.3273
s(pfr_participant).35	-1.5758	1.8535
s(pfr_participant).36	-1.1452	2.757

s(pfr_participant).37	7.3676	2.7764
s(pfr_participant).38	0.1432	3.0061
s(pfr_participant).39	-0.5169	2.8012
s(pfr_participant).40	-2.5837	3.4357
s(pfr_participant).41	-2.4264	1.8566
s(pfr_participant).42	7.4204	2.7515
s(pfr_participant).43	3.701	3.2246
s(pfr_participant).44	-2.3142	2.7271
s(pfr_participant).45	-1.4783	1.8362
s(pfr_participant).46	-0.8119	3.4236
s(pfr_participant).47	-2.91	2.2243
s(pfr_participant).48	-2.3047	2.7677
s(pfr_participant).49	-1.9364	2.7055
s(pfr_participant).50	-0.8793	3.229
s(pfr_participant).51	-1.9784	3.0708
s(pfr_participant).52	-8.8145	1.9939
s(pfr_participant).53	-0.1424	2.7878
s(pfr_participant).54	-4.7399	2.6715
s(pfr_participant).55	11.8348	1.8121
s(pfr_participant).56	-0.0268	3.1258
s(pfr_participant).57	-0.9704	1.8023
s(week).1	0	0.0008

635
636
637
638

Table S3. Linear predictors for the PFR model.

Predictor	Estimate	SE	T.value	P.value
(Intercept)	2.9429	0.0872	33.752	0
MPQ-VAS	-1.16	0.4964	-2.3368	0.0206
Physical Functioning	2.2409	0.598	3.7475	0.0002
Psychiatric Diagnosis	0.2181	0.8874	0.2458	0.8061
Employed	4.0117	1.0939	3.6674	0.0003
Employed - Other	6.0273	1.2929	4.6617	0
Divorced	0.3939	1.8963	0.2077	0.8357
Married	3.5996	0.8582	4.1946	0
Age	-1.1946	0.4629	-2.5804	0.0107

639