

1 **Original research:**

2 **Time course of Quadriceps thickness changes over six months** 3 **post-anterior cruciate ligament reconstruction: unveiling** 4 **critical impairments in vastii muscles**

5 **Carlos De la Fuente,^{1,*} Rony Silvestre,² Eduardo Martínez-Valdes,³ Roberto Yañez,^{2,4} Ferran Abat,⁵ Alejandro**
6 **Neira,⁶ André Gustavo de Andrade,⁷ and Felipe P Carpes⁸**

- 7 1 Exercise and Rehabilitation Sciences Institute, Postgraduate, Faculty of Rehabilitation Sciences, Universidad Andres
8 Bello, Universidad Andres Bello, Santiago de Chile, Chile; delafuente@gmail.com, carlos.delafuente@unab.cl
9 2 Innovation centre, Clinica MEDS, Santiago Chile; royanezdias@gmail.com, rony.silvestre.a@gmail.com
10 3 School of Sport, Exercise and Rehabilitation Sciences, College of Life and Environmental Science, University of
11 Birmingham, UK; e.a.martinezvaldes@bham.ac.uk
12 4 Knee Orthopedics service, Clinica MEDS, Santiago, Chile; royanezdias@gmail.com.
13 5 Sports Orthopaedic Department. ReSport Clinic. Pompeu Fabra University, Higher School of Health Sciences
14 Tecnocampus. Gracias Research Group (GRC 01604). Mataró, Barcelona. Spain; abat@resportclinic.com
15 6 Escuela de kinesiología, Facultad de Medicina y Ciencias de la Salud, Universidad Mayor, Santiago, Chile;
16 alejandro.neira@umayor.cl
17 7 Universidade Federal de Minas Gerais, Belo Horizonte, MG, Brazil; andreguto@yahoo.com.br
18 8 Applied Neuromechanics Research Group, Federal University of Pampa, Uruguaiana, RS, Brazil;
19 carpes@unipampa.edu.br
20

21 **CRedit roles:** Conceptualization (CD, FPC, AG, EM); Data curation (CD); Formal analysis (CD,
22 AG, FC, EM); Funding acquisition (none); Investigation (CD, RY, EM RS, AG, CF,); Methodology
23 (CD, EM, FA, AG, CF); Project administration (RY, RS, CF); Resources (RY, RS); Software (CD);
24 Supervision (RS, RY); Validation (CD, RY, EM, FA, RS, AG, FC, CF); Visualization (CD);
25 Roles/Writing – original draft (CD, EM, FA, AG, FC); Writing – review & editing (CD, RY, EM,
26 FA, RS, AG, FC, CF).

27 **Corresponding author:**

28 Carlos De la Fuente, Ph.D.
29 Santiago, Chile. Zip code: 7960000.
30 Email address: delafuente@gmail.com

31 Abstract count: 249 / 250; Word count: 3435 / 3500

32 **Conflict of interest statement:** The authors declare no conflicts of interest.

33
34 **Funding:** This study has not received any funding.

35
36 **Data availability statement:** The datasets analyzed during the current study will be available in the
37 research gate repository of the corresponding author.

38 **Acknowledgment**

39 C. De la Fuente and A. de Andrade acknowledge Departamento de Esportes, Escola de Educação
40 Física, Fisioterapia e Terapia Ocupacional, EEEFTO-UFGM, Universidade Federal do Minas
41 Gerais, Belo Horizonte, MG, Brazil where C. De la Fuente is doing his voluntary (non-funded)
42 postdoctorate in functional and time-series statistics. The authors thank C. Fleckenstein and M.
43 Soldan for the data collection. Authors C. De la Fuente, R. Yañez, R., and Silvestre thank *Sociedad*
44 *Chile de Traumatología y Ortopedia* for the *Concurso de Ligamento Cruzado Anterior 2024*
45 funding No. 059. E. Martínez-Valdes is supported by an early career research fellowship grant from
46 Orthopaedic Research UK (ORUK ref: 574).
47
48

49 **Abstract**

50 The mechanisms behind the persistent Quadriceps weakness observed after an Anterior Cruciate
51 Ligament reconstruction (ACLR) remain debatable. We described the time course of changes in
52 Quadriceps thickness, strength, and thigh circumference over six months following an ACLR. We
53 also studied the causal relation between Quadriceps thickness, total thickness and strength.
54 Quadriceps thicknesses, Quadriceps strength, and thigh circumference were measured preoperative,
55 3, and 6 months post-ACLR surgery in 103 patients (77 men and 26 women). Limbs and time were
56 compared with repeated-measures ANOVA and causal relations through mediation analysis ($\alpha =$
57 5%). From 0 to 3 months post-surgery, Quadriceps strength ($p < 0.05$), and VI ($p < 0.05$) and VL
58 ($p < 0.001$) thicknesses was reduced. From 3 to 6 months, Quadriceps strength ($p < 0.05$), total
59 Quadriceps thickness ($p < 0.001$), and VI ($p < 0.001$) and VL ($p < 0.05$) thicknesses increased. VM and
60 RF thicknesses increase to 3 months after ACLR ($p < 0.05$). Quadriceps strength, circumference at 5
61 cm, VI, VL, VM, and total Quadriceps thickness remain lower than the contralateral limb 6 months
62 following an ACLR ($p < 0.05$). The VI thickness determine indirectly ($p < 0.001$) through the total
63 Quadriceps thickness the Quadriceps strength pattern, while the VL thickness directly determined it
64 ($p = 0.034$). Quadriceps thickness adapts heterogeneously, with VI and VL atrophying for up to three
65 months, explaining the post-ACLR quadriceps weakness. By 6 months, VI does not recover its
66 thickness proportion, and VI and VL do not return to pre-surgery conditions. Both vastii muscles
67 primarily determine Quadriceps strength changes, eliciting the VI thickness as a key biomarker for
68 Quadriceps weakness following ACLR.

69

70 **Keywords:** Neuromechanical adaptations, knee, ligament ruptures, surgery, muscle atrophy, muscle
71 strength.

72

73

74

75 **1. Introduction**

76 Quadriceps muscle weakness can last up to 12 months following an Anterior Cruciate Ligament
77 reconstruction (ACLR) (Czaplicki et al., 2015; Pottkotter et al., 2020). Quadriceps weakness leads to
78 poor patient outcomes, early onset of osteoarthritis, and increased ACL re-rupture risk (Criss et al.,
79 2023). The etiopathogenesis of muscle weakness is primarily a condition of muscle atrophy
80 (Birchmeier et al., 2020; Norte et al., 2018; Tim-Yun Ong et al., 2022), but neural and inhibitory
81 circulant molecules can also promote persistent muscle weakness (De la Fuente et al., 2022b;
82 Fukunaga et al., 2019; Hennebry et al., 2017; Kuenze et al., 2015; Nuccio et al., 2021; Pietrosimone
83 et al., 2022; Yang et al., 2019). Although Quadriceps muscles may re-store their morphological
84 characteristics post-ACLR, heterogeneous changes between the different Quadriceps muscle heads
85 may induce alterations in muscle synergies and overall deficits in Quadriceps strength.
86 Unfortunately, there is scarce evidence regarding the adaptation of the different Quadriceps muscle
87 heads and its impact on Quadriceps strength after ACLR. Thus, changes in Quadriceps thickness, a
88 technique with moderate to high reliability (ICCs from 0.76 to 0.95 (Abiko et al., 2022)), may serve
89 as a clinically useful tool to potentially assess muscle weakness (Harput et al., 2022; Lanferdini et
90 al., 2023). Similarly, this method has been previously explored for assessing other muscle
91 dysfunctions (De la Fuente et al., 2020).

92 A reduction in vastus intermedius (VI) and vastus lateralis (VL) muscle thickness is
93 observed within 48 to 72 hours in the early postoperative phase (Lee et al., 2020). Seven days later,
94 all Quadriceps portions show a reduction in muscle thickness, accompanied by lower levels of IGF-
95 1 and a slight increase in myostatin levels (Yang et al., 2019). By week six following ACLR,
96 functional outcomes from the International Knee Documentation Committee (IKDC) (Irrgang et al.,
97 2001) begin to improve (Agarwal et al., 2021). Three months following ACLR, changes in
98 Quadriceps volume (total volume) can explain 57% of Quadriceps strength variance (Grapar Žargi
99 et al., 2017). Following the first six postoperative months, Quadriceps strength deficits appear more
100 closely associated with Quadriceps morphology (Pottkotter et al., 2020; Thomas et al., 2016) rather

101 than neural inhibition (Fukunaga et al., 2019; Harput et al., 2022). Thus, the understanding of
102 differences in muscle thickness adaptations following ACLr is relevant not only for clinical
103 purposes of understanding the possible sources of weakness and better planning exercise therapies
104 based on dysfunctions to different Quadriceps muscle heads (Cobian et al., 2024) but also is
105 relevant for further studies addressing fatigue effects (Bouillard et al., 2014) or force output
106 interpretations like isometric and isokinetic measures following ACLr (Bouillard et al., 2014).

107 Understanding Quadriceps thickness adaptations following ACLr is important to distinguish
108 morphological causes of Quadriceps weakness (De la Fuente et al., 2022b; Pietrosimone et al.,
109 2022; Sonnery-Cottet et al., 2019). Although the Quadriceps thickness and circumference
110 measurements may show deficits between 5% and 23% compared to the contralateral limb
111 (Agarwal et al., 2021), patients demonstrate strength and functional clinical improvements six
112 months post surgery (Pottkotter et al., 2020; Thomas et al., 2016). In consequence, understanding
113 how Quadriceps thickness changes across all of its muscle heads and determining how knee
114 extension strength, and thigh circumference change during the initial six months after ACLr, could
115 provide important information regarding rehabilitation progression. Furthermore, establishing the
116 causal relation between Quadriceps thickness, total thickness, and Quadriceps strength during this
117 period, could provide specific therapeutic targets for the management of the injury. This
118 understanding may unveil unknown Quadriceps morphology changes within the first six months of
119 evolution and markers of Quadriceps weakness.

120 Therefore, in this study, we set out to determine whether all Quadriceps muscles adapt
121 similarly during the six months following an ACLr that leads to muscle weakness. Furthermore, we
122 determine the causal relation between Quadriceps thickness, total thickness, and Quadriceps
123 strength in ACLr patients over the six months of evolution post surgery.

124

125 **2. Patients and Methods**

126 **2.1. Study design**

127 In this retrospective, observational, and comparative study, patients with a first acute and unilateral
128 ACLr were evaluated for Quadriceps thickness, thigh circumference, and Quadriceps strength from
129 pre-surgery up to six months after an ACLRr. Measurements were performed in the ACLr and
130 contralateral leg [CON] at 3-time points (pre-surgery [0M] without anesthesia, three months post-
131 surgery [3M], and six months post-surgery [6M]). Time points and groups were compared. Two
132 experienced physical therapists trained in ultrasonography (> 5 years of experience) collected all the
133 data.

134

135 **2.2. Participants**

136 From February 2021 to April 2024, 103 adult patients with arthroscopic ACLr (77 men and 26
137 women; age 29.0 ± 10.2 years, height 1.73 ± 0.07 m, body mass 77.2 ± 11.1 kg, body mass index
138 26.0 ± 3.8 kg/m², pre-operative IKDC 51.5 ± 16.4 pts, IKDC at three months 58.6 ± 13.8 pts, and
139 IKDC at six months 74.3 ± 12.5 pts) were included in this study. The inclusion criteria were: i) first
140 unilateral acute ACL rupture, ii) positive Lachman and anterior drawer test, iii) non-contact sports-
141 related ACL rupture, iv) arthroscopic ACL complete mid-substance rupture confirmation, and v)
142 age between 18 and 55 years old. The exclusion criteria were any rheumatologic, neurologic, and
143 metabolic conditions. The local institution's ethics committee of MEDS clinic (#122024) approved
144 this research, which was conducted according to the Helsinki Declaration, and written informed
145 consent was given.

146 **2.3. Diagnosis and rehabilitation**

147 A combination of physical examinations associated with acute inflammation signs, positive anterior
148 drawer tests, and non-integrity of the ACL assessed by magnetic resonance imaging (MRI) served
149 for the ACL rupture diagnosis hypothesis, which was confirmed by arthroscopy (Caracciolo et al.,
150 2021; Yañez-Díaz et al., 2023). The MRI showed focal or diffuse discontinuity of the ACL with a
151 preference for sagittal fast spin-echo T2, abnormal ACL signal (focal or diffuse increased signal

152 intensity within discontinuous ACL) with a preference for the sagittal fast spin-echo T2-fat-
153 suppressed, the decreased slope of residual ACL fibers, and a wavy configuration of the ACL with
154 an angle lower than 45° (ACL–Blumensaat line) with a preference in the sagittal oblique fast spin-
155 echo T2 (Caracciolo et al., 2021; Yañez-Díaz et al., 2023).

156 All patients completed a six-month physiotherapy intervention following the same protocol
157 (San Martín-Mohr et al., 2018). The goals for the first six weeks of rehabilitation were to reduce
158 inflammation, restore the knee range of motion, favor muscle activation with open kinetic chain
159 exercises (Boccia et al., 2019), gait training using crutches (De la Fuente et al., 2022a), and control
160 excessive loads considering both the type of graft and patient conditions. Knee strengthening and
161 neuromuscular control exercises started six weeks post-surgery (San Martín-Mohr et al., 2018).
162 Symmetrical knee strength and jogging started 12 weeks post-surgery (San Martín-Mohr et al.,
163 2018). Plyometric exercises, jumping, and change of direction movements in close kinetic chain
164 exercises started 20 weeks post-surgery (San Martín-Mohr et al., 2018).

165

166 **2.4. Quadriceps thickness assessment**

167 The thickness of the Quadriceps was measured by physical therapy with 5 yrs of experience
168 measuring at each time point ([0M], [3M], and [6M]) by ultrasonography images acquired using a
169 handheld Lumify ultrasound system (Philips Ultrasound, Inc., The Netherlands) in B-mode, 34.5
170 mm field of view, linear array transducer L12-4 (Philips Ultrasound, Inc., The Netherlands), and
171 probe frequency of 12 MHz. Images were sampled at 28 Hz, TLB of 0.1, Musculoskeletal pre-
172 configuration, power of -0.3 dB, adjusted gain between 40 and 60 points, and depth between 4.0
173 and 6.0 cm depending on conditions of participants, i.e., greater subcutaneous tissue thickness.
174 Before the acquisition, the patients rested for at least 10 min (Lanferdini et al., 2023) in a
175 comfortable room at 22 °C. A water-soluble gel was applied in the ultrasonographic probe to
176 provide complete acoustic contact with the skin (Lanferdini et al., 2023). Patients were supine on a

177 stretcher with 0° of trunk flexion and knee fully extended, and each measure was repeated three
178 times.

179 VI and rectus femoris (RF) thicknesses were measured bilaterally with the probe orientated
180 longitudinally at 50% of the total distance from the superior patellar border towards the anterior
181 superior iliac spine measured using metric plastic tape to represent the middle portion of the upper
182 leg (Figure 1). Vastus medialis (VM) thickness was measured bilaterally from 4 cm medially and
183 superior to the medial patella border (Figure 1). VL thickness was measured at 4 cm laterally from
184 the VI and RF measure sites. Low-intense isometric contraction and palpation were performed
185 before the acquisition to check VL location (Figure 1). The probe was perpendicular to the skin and
186 aligned toward the muscle fibers. Special attention was given to obtaining parallel aponeurosis
187 images between VI and RF and fiber differentiation between RF and VL (Figure 1). The Quadriceps
188 portion thicknesses were vertically measured between muscles aponeurosis using the screen
189 distance measure option of the ultrasound device (Philips Ultrasound, Inc., The Netherlands). To
190 improve the reproducibility, we used standardized protocols for probe localization and orientation,
191 such as those described previously, and also considered anatomical landmarks and probe
192 localization in each patient. The Quadriceps thickness has been reported to have high reliability,
193 ranging between 0.76 and 0.95 (Abiko et al., 2022).

194 Ultrasonographic variables were raw Quadriceps thickness measurements in mm units and
195 normalized thickness measurements mm mm^{-1} . Each portion of the Quadriceps was normalized to
196 the total Quadriceps thickness estimated as the sum of VI, VL, VM, and RF thicknesses.

197

198 **2.5. Strength assessment**

199 Isometric knee extension strength was evaluated. Strength was assessed through isometric tests to
200 reduce patient risks in the first months of rehabilitation. Isometric Quadriceps strength was
201 measured with the patients seated with the trunk in an upright posture and hip flexed at 90° and
202 knee flexed at 90° in a custom chair instrumented with a S-Beam load cell (Rock Exotica LLC,

203 USA, resolution $\pm 2\%$, dynamic range ± 1 kN to ± 2 kN) attached at the ankle level (De la Fuente et
204 al., 2023). The force signals were sampled at 500 Hz and measured in kgf through the Bluetooth
205 Enforcer App. (Version 1.11488, Rock Exotica LLC, USA) using an iPad (Second generation,
206 Apple Inc., USA). Patients were requested to complete two trials of maximal voluntary isometric
207 Quadriceps contraction lasting 3 s each, with 1 min rest between trials, and the higher peak was
208 considered for the statistical analyses. Patient was previously familiarized around 5 minuts
209 regarding the test. The peak force was obtained from low-pass filtered signals with a Butterworth
210 filter and a cutoff frequency of 50 Hz. The peak force value was converted from kgf to Nm units by
211 multiplying by a constant of $9.81 \text{ m}\cdot\text{s}^{-2}$. Knee extension strength was normalized to the individual
212 body mass.

213

214 **2.6. Complementary data collection**

215 Thigh circumference was bilaterally measured using a metric plastic tape graded in millimeters at 5
216 and 20 cm above the patella's middle portion and superior border (Shaw et al., 2004; Soderberg et
217 al., 1996). Three measurements were made using the mean measure. After the surgery, the same
218 physical therapist performed the measurements at 0M, 3M, and 6M.

219

220 **2.7. Data analysis**

221 Quadriceps strength, normalized Quadriceps strength, thigh circumference at 5 cm and 20 cm, RF,
222 VI, VL, VM and total thickness, normalized RF, VI, VL, and VM, are described considering the
223 mean and standard deviation after confirming normality distribution (Kolmogorov-Smirnov test)
224 and homoscedasticity (Levene's test) principles. Two-way repeated measures ANOVA for factors
225 time (0M, 3M, and 6M) and group (ACLr and CON group) with Bonferroni correction for multiple
226 comparisons were performed to explore group differences and changes during the time course after
227 surgery with $\text{time}\cdot\text{group} < 0.05$. Otherwise, a one-way repeated measure ANOVA with Bonferroni
228 post hoc was used to verify time effects.

229 The Intraclass Correlation Coefficient (ICC) was obtained for k averaged measurements for
230 a fixed evaluator as $ICC_{2,k}$, where the random and systematic errors are considered in the ICC
231 estimation (Weir, 2005). The mean squared of participants, error, and $ICC_{2,k}$ calculation trials were
232 obtained from a repeated measurement ANOVA design (Weir, 2005).

233 Finally, we performed a mediation analysis as part of structured equation models for each
234 Quadriceps thickness, total thickness as a mediator, and Quadriceps strength as the output model.
235 We considered the whole data as a time series for factors, mediators, and output. The model
236 evaluates the indirect effect of thickness proportions involved in Quadriceps strength versus the
237 direct effect of each muscle thickness without considering their effect on Quadriceps strength. All
238 tests considered an α set at 5%, and all estimations were performed through the open-source
239 software JASP 0.18.3 (University of Amsterdam, The Netherlands).

240

241 3. Results

242

243 Raw and normalized thicknesses results are summarized in Table 1, Figure 1, and
244 supplementary material.

245

246 *****Please, Table 1, Figure 1, and 2 near here*****

247

248 The raw Quadriceps strength and Thigh circumferences is summarized in Table 1 and Figure
249 3.

250

251 *****Please, Figure 3 near here*****

252

253 Table 2 and Figure 4 summarize the mediation analysis of the normalized time course (time
254 series) muscle thickness of ACLr during the six-month postoperative.

255

256

Please, Figure 4 and Table 2 near here

257

258 **4. Discussion**

259 Our study provides insights into the thickness adaptation of Quadriceps muscle heads up to 6
260 months post-ACLR, demonstrating that VI and VL thickness adaptation determines the Quadriceps
261 strength weakness following an ACLR. We found heterogenic changes across the four Quadriceps
262 muscle heads. From 0 to 3 months, the decrease in VI and VL thicknesses determined the highest
263 Quadriceps strength weakness. From 3 to 6 months, the increase in Quadriceps strength was
264 determined by the increase in VI and VL thicknesses and total Quadriceps thickness. Up to 3
265 months, VM and RF showed a pattern of increasing thickness that aligns with changes in
266 circumference measurements. However, six months after ACLR, Quadriceps strength, circumference
267 at 5 cm, VI, VL, VM, and total thickness were not fully recovered compared to the CON limb. VI
268 did not recover their Quadriceps proportion, and VI and VL did not recover to the pre-surgery
269 conditions.

270 A novelty of our study was to identify a critical period within the first three months after
271 ACLR when a peak of VI and VL atrophy was observed in the ACLR limb. The atrophy is likely to
272 explain the ACLR Quadriceps strength deficits, which mediation analysis confirmed. Our findings
273 agree with the smaller total Quadriceps, VI, and VL volumes and cross-sectional MRI measurement
274 trends in the ACLR limb without relevant atrophy of other Quadriceps portions at 3.2 ± 2.0 months
275 post-ACLR (Williams et al., 2005). In the first three months post-surgery, skeletal muscle repair and
276 remodeling are suggested to be downregulated, causing apoptosis and muscle fiber atrophy
277 (Parstorfer et al., 2021). As a result, there is a reduction in the sarcomere population, altering
278 muscle mechanics contraction (Thomas et al., 2016). Furthermore, dysregulation of myokines [5]
279 and muscle inhibition signaling may start as early as 72 hours post-surgery [7]. We argue that these
280 physiological changes affect both VI and VL more than the other Quadriceps muscle heads,

281 explaining its persistent impairments. The mediation analysis suggests that Quadriceps strength is
282 mainly influenced by the thickness of VI, followed by VL and VM, while the RF thickness
283 responds inversely (hypertrophy) over six-month post surgery.

284 The VI atrophy may precede the dysregulation of Quadriceps action (Kuenze et al., 2016)
285 since VI thickness is considered a strong predictor of knee extensor strength (Ando et al., 2015;
286 Kuenze et al., 2016) and the VI activation plays a stabilizing role in the knee (Alessandro et al.,
287 2020; Mazzoli et al., 2018; Saito and Akima, 2015). The stabilizing function of the VI is observed
288 within the first 50% of the stance phase in rat locomotion, showing different activation patterns
289 compared to the other Quadriceps heads (Alessandro et al., 2020). In stroke survivors', premature
290 and prolonged VI activation is associated with a stiffer knee during gait (Mazzoli et al., 2018),
291 smoother knee joint motion during hip flexion (Ando et al., 2015; Kuenze et al., 2016), and during
292 Quadriceps contraction at >60% of the maximal voluntary isometric contraction VI shows an
293 inverse activation pattern compared to the other Quadriceps portions (Akima and Saito, 2013).
294 Therefore, the persistent atrophy pattern found is likely to predispose changes in the synergy of
295 Quadriceps heads for effective knee extension force. This condition is not exclusively caused by VL
296 dysfunction as previously was suggested for persistent Quadriceps weakness (Nuccio et al., 2021).
297 In the same manner, it is expected knee stabilization impairments and induction of pathological
298 stress over the patellar tendon by asymmetrical tractions. The reduced thickness of VI and VL
299 appears to be compensated by the increased RF and VM capacity, as was evidenced by their
300 increased thickness throughout the ACLr time course in our study.

301 The time course for VM and RF showed a progressive thickness increase in the ACLr and
302 CON limb after six months post-surgery. These patterns were only in coherence with the patterns
303 showed by the circumferences at 5 and 20 cm over the knee. The progressive thickness increase of
304 VM and RF suggests a hypertrophy adaptation, in contrast to the observed in the VI and VL.
305 Unfortunately, the hypertrophy of VM and hypotrophy of VL may lead to disbalances in the
306 mediolateral knee force, which agrees with patients who develop early patellofemoral pain after

307 ACLr (Ong et al., 2023). Our findings for VM and RF also suggest that the synergy actions between
308 Quadriceps portions can change after six months post-surgery.

309 Although ACLr studies frequently focus on VM or VL due to patellofemoral pain (Ong et
310 al., 2023) or muscle inhibition (Nuccio et al., 2021), early VI atrophy has not been considered
311 during ACLr rehabilitation within the first three months post surgery. Therefore, a more
312 comprehensive understanding of vastii atrophy and its therapeutics, such as early rehabilitation,
313 early physiological stimulus (De la Fuente et al., 2024), early feedback methods (De la Fuente et al.,
314 2020), or muscle strengthening aiming for each Quadriceps portion (Narici et al., 1996) could lead
315 to better clinical outcomes as observed in other pathologies (C. De la Fuente et al., 2016; De la
316 Fuente et al., 2024, 2020, 2018; C. I. De la Fuente et al., 2016). Also, the observed deficit in the
317 total Quadriceps thickness compared to the CON limb establishes a risk factor for lower limb injury
318 (Kozłenia et al., 2022) and agrees with morphological impairments as the primary source of
319 strength deficits following ACLr (Birchmeier et al., 2020; Krishnan and Williams, 2011; Norte et
320 al., 2018; Thomas et al., 2016; Tim-Yun Ong et al., 2022). In addition, we call attention to the low
321 sensitivity of thigh circumference measurement to known specific Quadriceps portion thickness
322 changes following an ACLr. Finally, assessing the time course of muscle thickness until six months
323 is not trivial because it is a standard period to begin with sports movements (Williams et al., 2005)
324 and would be a period when Quadriceps activation failure can be more evident (De la Fuente et al.,
325 2022b).

326 The main limitations of our study include the different training levels of the participants
327 before the surgery (no athletes were included), daily routine during the rehabilitation (because of
328 the inherent differences in life routines between participants), the type of graft (not all patients
329 required the same technique), sex (inherent to physiological sex differences), undesired dropout of
330 patients (a personal decision of patients or incapacity to assist by external factors which were not
331 considered for repeated measurement methods) that would have added more data variability, and

332 the low ICC values for VM measurements. Therefore, readers need to interpret the study
333 considering these limitations.

334

335 **5. Conclusions**

336 Quadriceps thickness is not recovered up to six months following an ACLr surgery. Until the third
337 month post-surgery, VI and VL are highly atrophied, compromising the Quadriceps strength and
338 establishing the most critical rehabilitation stage. VI does not recover its Quadriceps proportion,
339 and VI and VL do not recover pre-surgery conditions, which are the primary determinants of
340 Quadriceps strength changes following ACLr. Finally, VI thickness may be used as a biomarker
341 predicting Quadriceps weakness following ACLr.

342 6. References

- 343 Abiko, T., Ohmae, K., Murata, S., Shiraiwa, K., Horie, J., 2022. Reliability of muscle thickness and
344 echo intensity measurements of the quadriceps: A novice examiner. *J Bodyw Mov Ther* 31,
345 164–168. <https://doi.org/10.1016/j.jbmt.2022.03.004>
- 346 Agarwal, S., Jain, H., Raichandani, K., Godara, J., Choudhary, S., 2021. Early Quadriceps Wasting
347 after Anterior Cruciate Ligament Reconstruction in Young Adults: A Prospective Study.
348 *JCDR*. <https://doi.org/10.7860/JCDR/2021/47254.14769>
- 349 Akima, H., Saito, A., 2013. Inverse activation between the deeper vastus intermedius and
350 superficial muscles in the quadriceps during dynamic knee extensions. *Muscle Nerve* 47,
351 682–690. <https://doi.org/10.1002/mus.23647>
- 352 Alessandro, C., Barroso, F.O., Prashara, A., Tentler, D.P., Yeh, H.-Y., Tresch, M.C., 2020.
353 Coordination amongst quadriceps muscles suggests neural regulation of internal joint
354 stresses, not simplification of task performance. *Proc Natl Acad Sci U S A* 117, 8135–8142.
355 <https://doi.org/10.1073/pnas.1916578117>
- 356 Ando, R., Saito, A., Umemura, Y., Akima, H., 2015. Local architecture of the vastus intermedius is
357 a better predictor of knee extension force than that of the other quadriceps femoris muscle
358 heads. *Clin Physiol Funct Imaging* 35, 376–382. <https://doi.org/10.1111/cpf.12173>
- 359 Birchmeier, T., Lisee, C., Kane, K., Brazier, B., Triplett, A., Kuenze, C., 2020. Quadriceps Muscle
360 Size Following ACL Injury and Reconstruction: A Systematic Review. *J Orthop Res* 38,
361 598–608. <https://doi.org/10.1002/jor.24489>
- 362 Boccia, G., Martinez-Valdes, E., Negro, F., Rainoldi, A., Falla, D., 2019. Motor unit discharge rate
363 and the estimated synaptic input to the vasti muscles is higher in open compared with closed
364 kinetic chain exercise. *J Appl Physiol* (1985) 127, 950–958.
365 <https://doi.org/10.1152/jappphysiol.00310.2019>
- 366 Bouillard, K., Jubeau, M., Nordez, A., Hug, F., 2014. Effect of vastus lateralis fatigue on load
367 sharing between quadriceps femoris muscles during isometric knee extensions. *J*
368 *Neurophysiol* 111, 768–776. <https://doi.org/10.1152/jn.00595.2013>
- 369 Caracciolo, G., Yáñez, R., Silvestre, R., De la Fuente, C., Zamorano, H., Ossio, A., Strömbäck, L.,
370 Abusleme, S., P. Carpes, F., 2021. Intraoperative pivot-shift accelerometry combined with
371 anesthesia improves the measure of rotatory knee instability in anterior cruciate ligament
372 injury. *J Exp Orthop* 8, 80. <https://doi.org/10.1186/s40634-021-00396-1>
- 373 Cobian, D.G., Knurr, K.A., Joachim, M.R., Bednarek, A.L., Broderick, A.M., Heiderscheit, B.C.,
374 2024. Does It Matter? Isometric or Isokinetic Assessment of Quadriceps Strength Symmetry
375 9 Months After ACLR in Collegiate Athletes. *Sports Health* 19417381241247819.
376 <https://doi.org/10.1177/19417381241247819>
- 377 Criss, C.R., Lepley, A.S., Onate, J.A., Clark, B.C., Simon, J.E., France, C.R., Grooms, D.R., 2023.
378 Brain activity associated with quadriceps strength deficits after anterior cruciate ligament
379 reconstruction. *Sci Rep* 13, 8043. <https://doi.org/10.1038/s41598-023-34260-2>
- 380 Czaplicki, A., Jarocka, M., Walawski, J., 2015. Isokinetic Identification of Knee Joint Torques
381 before and after Anterior Cruciate Ligament Reconstruction. *PLoS One* 10, e0144283.
382 <https://doi.org/10.1371/journal.pone.0144283>
- 383 De la Fuente, C., Cruz-Montencinos, C., la Fuente, C.D., y Lillo, R.P., Chamorro, C., Henriquez,
384 H., 2018. Early Short-Term Recovery of Single-Leg Heel Rise and ATRS After Achilles
385 Tenorrhaphy: Cluster Analysis [WWW Document]. *Asian Journal of Sports Medicine*.
386 <https://doi.org/10.5812/asjms.67661>
- 387 De la Fuente, C., Neira, A., Torres, G., Silvestre, R., Roby, M., Yáñez, R., Herrera, S., Martabit, V.,
388 McKay, I., Carpes, F.P., 2022a. Effects of Elbow Crutch Locomotion on Gluteus Medius
389 Activation During Stair Ascending. *Front Bioeng Biotechnol* 10, 890004.
390 <https://doi.org/10.3389/fbioe.2022.890004>

- 391 De la Fuente, C., Peña y Lillo, R., Carreño, G., Marambio, H., 2016. Prospective randomized
392 clinical trial of aggressive rehabilitation after acute Achilles tendon ruptures repaired with
393 Dresden technique. *Foot (Edinb)* 26, 15–22. <https://doi.org/10.1016/j.foot.2015.10.003>
- 394 De la Fuente, C., Silvestre, R., Baechler, P., Gemigniani, A., Grunewaldt, K., Vassiliu, M.,
395 Wodehouse, V., Delgado, M., Carpes, F.P., 2020. Intrasession Real-time Ultrasonography
396 Feedback Improves the Quality of Transverse Abdominis Contraction. *J Manipulative
397 Physiol Ther.* <https://doi.org/10.1016/j.jmpt.2019.10.017>
- 398 De la Fuente, C., Silvestre, R., Botello, J., Neira, A., Soldan, M., Carpes, F.P., 2024. Unique case
399 study: Impact of single-session neuromuscular biofeedback on motor unit properties
400 following 12 days of Achilles tendon surgical repair. *Physiol Rep* 12, e15868.
401 <https://doi.org/10.14814/phy2.15868>
- 402 De la Fuente, C., Silvestre, R., Yañez, R., Roby, M., Soldán, M., Ferrada, W., Carpes, F.P., 2023.
403 Preseason multiple biomechanics testing and dimension reduction for injury risk
404 surveillance in elite female soccer athletes: short-communication. *Sci Med Footb* 7, 183–
405 188. <https://doi.org/10.1080/24733938.2022.2075558>
- 406 De la Fuente, C., Stoelben, K.J.V., Silvestre, R., Yañez, R., Cheyre, J., Guadagnin, E.C., Carpes,
407 F.P., 2022b. Steadiness training improves the quadriceps strength and self-reported
408 outcomes in persistent quadriceps weakness following nine months of anterior cruciate
409 ligament reconstruction and failed conventional physiotherapy. *Clin Biomech (Bristol,
410 Avon)* 92, 105585. <https://doi.org/10.1016/j.clinbiomech.2022.105585>
- 411 De la Fuente, C.I., Lillo, R.P.Y., Ramirez-Campillo, R., Ortega-Auriol, P., Delgado, M., Alvarez-
412 Ruf, J., Carreño, G., 2016. Medial Gastrocnemius Myotendinous Junction Displacement and
413 Plantar-Flexion Strength in Patients Treated With Immediate Rehabilitation After Achilles
414 Tendon Repair. *J Athl Train* 51, 1013–1021. <https://doi.org/10.4085/1062-6050-51.12.23>
- 415 Fukunaga, T., Johnson, C.D., Nicholas, S.J., McHugh, M.P., 2019. Muscle hypotrophy, not
416 inhibition, is responsible for quadriceps weakness during rehabilitation after anterior
417 cruciate ligament reconstruction. *Knee Surg Sports Traumatol Arthrosc* 27, 573–579.
418 <https://doi.org/10.1007/s00167-018-5166-1>
- 419 Grapar Žargi, T., Drobnič, M., Vauhnik, R., Koder, J., Kacin, A., 2017. Factors predicting
420 quadriceps femoris muscle atrophy during the first 12weeks following anterior cruciate
421 ligament reconstruction. *Knee* 24, 319–328. <https://doi.org/10.1016/j.knee.2016.11.003>
- 422 Harput, G., Demirci, S., Soylu, A.R., Bayrakci Tunay, V., 2022. Association between quadriceps
423 muscle thickness and knee function in anterior cruciate ligament reconstructed athletes: a
424 cross-sectional study. *Physiother Theory Pract* 1–9.
425 <https://doi.org/10.1080/09593985.2022.2068096>
- 426 Hennebry, A., Oldham, J., Shavlakadze, T., Grounds, M.D., Sheard, P., Fiorotto, M.L., Falconer, S.,
427 Smith, H.K., Berry, C., Jeanplong, F., Bracegirdle, J., Matthews, K., Nicholas, G., Senna-
428 Salerno, M., Watson, T., McMahon, C.D., 2017. IGF1 stimulates greater muscle
429 hypertrophy in the absence of myostatin in male mice. *J Endocrinol* 234, 187–200.
430 <https://doi.org/10.1530/JOE-17-0032>
- 431 Irrgang, J.J., Anderson, A.F., Boland, A.L., Harner, C.D., Kurosaka, M., Neyret, P., Richmond,
432 J.C., Shelborne, K.D., 2001. Development and validation of the international knee
433 documentation committee subjective knee form. *Am J Sports Med* 29, 600–613.
434 <https://doi.org/10.1177/03635465010290051301>
- 435 Koźlenia, D., Struzik, A., Domaradzki, J., 2022. Force, Power, and Morphology Asymmetries as
436 Injury Risk Factors in Physically Active Men and Women. *Symmetry* 14, 787.
437 <https://doi.org/10.3390/sym14040787>
- 438 Krishnan, C., Williams, G.N., 2011. Factors explaining chronic knee extensor strength deficits after
439 ACL reconstruction. *J Orthop Res* 29, 633–640. <https://doi.org/10.1002/jor.21316>
- 440 Kuenze, C.M., Blemker, S.S., Hart, J.M., 2016. Quadriceps function relates to muscle size
441 following ACL reconstruction. *J Orthop Res* 34, 1656–1662.
442 <https://doi.org/10.1002/jor.23166>

- 443 Kuenze, C.M., Hertel, J., Weltman, A., Diduch, D., Saliba, S.A., Hart, J.M., 2015. Persistent
444 Neuromuscular and Corticomotor Quadriceps Asymmetry After Anterior Cruciate Ligament
445 Reconstruction. *J Athl Train* 50, 303–312. <https://doi.org/10.4085/1062-6050-49.5.06>
- 446 Lanferdini, F.J., Diefenthaler, F., Ávila, A.G., Moro, A.R.P., van der Zwaard, S., Vaz, M.A., 2023.
447 Quadriceps Muscle Morphology Is an Important Determinant of Maximal Isometric and
448 Crank Torques of Cyclists. *Sports (Basel)* 11, 22. <https://doi.org/10.3390/sports11020022>
- 449 Lee, J.-H., Cheon, S., Jun, H.-P., Huang, Y.-L., Chang, E., 2020. Bilateral Comparisons of
450 Quadriceps Thickness after Anterior Cruciate Ligament Reconstruction. *Medicina (Kaunas)*
451 56, 335. <https://doi.org/10.3390/medicina56070335>
- 452 Mazzoli, D., Giannotti, E., Manca, M., Longhi, M., Prati, P., Cosma, M., Ferraresi, G., Morelli, M.,
453 Zerbinati, P., Masiero, S., Merlo, A., 2018. Electromyographic activity of the vastus
454 intermedius muscle in patients with stiff-knee gait after stroke. A retrospective observational
455 study. *Gait Posture* 60, 273–278. <https://doi.org/10.1016/j.gaitpost.2017.07.002>
- 456 Narici, M.V., Hoppeler, H., Kayser, B., Landoni, L., Claassen, H., Gavardi, C., Conti, M.,
457 Cerretelli, P., 1996. Human quadriceps cross-sectional area, torque and neural activation
458 during 6 months strength training. *Acta Physiol Scand* 157, 175–186.
459 <https://doi.org/10.1046/j.1365-201X.1996.483230000.x>
- 460 Norte, G.E., Knaus, K.R., Kuenze, C., Handsfield, G.G., Meyer, C.H., Blemker, S.S., Hart, J.M.,
461 2018. MRI-Based Assessment of Lower-Extremity Muscle Volumes in Patients Before and
462 After ACL Reconstruction. *J Sport Rehabil* 27, 201–212. <https://doi.org/10.1123/jsr.2016-0141>
- 464 Nuccio, S., Del Vecchio, A., Casolo, A., Labanca, L., Rocchi, J.E., Felici, F., Macaluso, A.,
465 Mariani, P.P., Falla, D., Farina, D., Sbriccoli, P., 2021. Deficit in knee extension strength
466 following anterior cruciate ligament reconstruction is explained by a reduced neural drive to
467 the vasti muscles. *J Physiol* 599, 5103–5120. <https://doi.org/10.1113/JP282014>
- 468 Ong, M.T., Chi-wai Man, G., He, X., Yu, M., Lau, L.C., Qiu, J., Wang, Q., Ho-pak Liu, J., Chi-yin
469 Choi, B., Ng, J.P., Shu-hang Yung, P., 2023. Assessments of early patellofemoral joint
470 osteoarthritis features after anterior cruciate ligament reconstruction: a cross-sectional study.
471 *BMC Musculoskeletal Disorders* 24, 510. <https://doi.org/10.1186/s12891-023-06639-9>
- 472 Parstorfer, M., Profit, F., Weiberg, N., Wehrstein, M., Barié, A., Friedmann-Bette, B., 2021.
473 Increased satellite cell apoptosis in vastus lateralis muscle after anterior cruciate ligament
474 reconstruction. *J Rehabil Med* 53, jrm00153. <https://doi.org/10.2340/16501977-2794>
- 475 Pietrosimone, B., Lepley, A.S., Kuenze, C., Harkey, M.S., Hart, J.M., Blackburn, J.T., Norte, G.,
476 2022. Arthrogenic Muscle Inhibition Following Anterior Cruciate Ligament Injury. *J Sport*
477 *Rehabil* 31, 694–706. <https://doi.org/10.1123/jsr.2021-0128>
- 478 Pottkotter, K.A., Di Stasi, S.L., Schmitt, L.C., Magnussen, R.A., Paterno, M.V., Flanigan, D.C.,
479 Kaeding, C.C., Hewett, T.E., 2020. Timeline of gains in quadriceps strength symmetry and
480 patient-reported function early after ACL reconstruction. *Int J Sports Phys Ther* 15, 995–
481 1005. <https://doi.org/10.26603/ijsp20200995>
- 482 Saito, A., Akima, H., 2015. Neuromuscular Activation of the Vastus Intermedius Muscle during
483 Isometric Hip Flexion. *PLoS One* 10, e0141146.
484 <https://doi.org/10.1371/journal.pone.0141146>
- 485 San Martín-Mohr, C., Cristi-Sánchez, I., Pincheira, P.A., Reyes, A., Berral, F.J., Oyarzo, C., 2018.
486 Knee sensorimotor control following anterior cruciate ligament reconstruction: A
487 comparison between reconstruction techniques. *PLoS One* 13, e0205658.
488 <https://doi.org/10.1371/journal.pone.0205658>
- 489 Shaw, T., Chipchase, L.S., Williams, M.T., 2004. A users guide to outcome measurement following
490 ACL reconstruction. *Physical Therapy in Sport* 5, 57–67.
491 <https://doi.org/10.1016/j.ptsp.2003.11.007>
- 492 Soderberg, G.L., Ballantyne, B.T., Kestel, L.L., 1996. Reliability of lower extremity girth
493 measurements after anterior cruciate ligament reconstruction. *Physiother Res Int* 1, 7–16.
494 <https://doi.org/10.1002/pri.43>

- 495 Sonnery-Cottet, B., Saithna, A., Quelard, B., Daggett, M., Borade, A., Ouanezar, H., Thauinat, M.,
496 Blakeney, W.G., 2019. Arthrogenic muscle inhibition after ACL reconstruction: a scoping
497 review of the efficacy of interventions. *Br J Sports Med* 53, 289–298.
498 <https://doi.org/10.1136/bjsports-2017-098401>
- 499 Thomas, A.C., Wojtys, E.M., Brandon, C., Palmieri-Smith, R.M., 2016. Muscle atrophy contributes
500 to quadriceps weakness after anterior cruciate ligament reconstruction. *J Sci Med Sport* 19,
501 7–11. <https://doi.org/10.1016/j.jsams.2014.12.009>
- 502 Tim-Yun Ong, M., Fu, S.-C., Mok, S.-W., Franco-Obregón, A., Lok-Sze Yam, S., Shu-Hang Yung,
503 P., 2022. Persistent quadriceps muscle atrophy after anterior cruciate ligament
504 reconstruction is associated with alterations in exercise-induced myokine production. *Asia
505 Pac J Sports Med Arthrosc Rehabil Technol* 29, 35–42.
506 <https://doi.org/10.1016/j.asmart.2022.05.001>
- 507 Weir, J.P., 2005. Quantifying test-retest reliability using the intraclass correlation coefficient and
508 the SEM. *J Strength Cond Res* 19, 231–240. <https://doi.org/10.1519/15184.1>
- 509 Williams, G.N., Buchanan, T.S., Barrance, P.J., Axe, M.J., Snyder-Mackler, L., 2005. Quadriceps
510 weakness, atrophy, and activation failure in predicted noncopers after anterior cruciate
511 ligament injury. *Am J Sports Med* 33, 402–407. <https://doi.org/10.1177/0363546504268042>
- 512 Yañez-Díaz, R., Roby, M., Silvestre, R., Zamorano, H., Vergara, F., Sandoval, C., Neira, A.,
513 Yañez-Rojo, C., De la Fuente, C., 2023. Multiclass Support Vector Machine improves the
514 Pivot-shift grading from Gerdy’s acceleration resultant prior to the acute Anterior Cruciate
515 Ligament surgery. *Injury* S0020-1383(23)00271–1.
516 <https://doi.org/10.1016/j.injury.2023.03.020>
- 517 Yang, J.-H., Eun, S.-P., Park, D.-H., Kwak, H.-B., Chang, E., 2019. The Effects of Anterior
518 Cruciate Ligament Reconstruction on Individual Quadriceps Muscle Thickness and
519 Circulating Biomarkers. *Int J Environ Res Public Health* 16, 4895.
520 <https://doi.org/10.3390/ijerph16244895>
521

Figure Captions

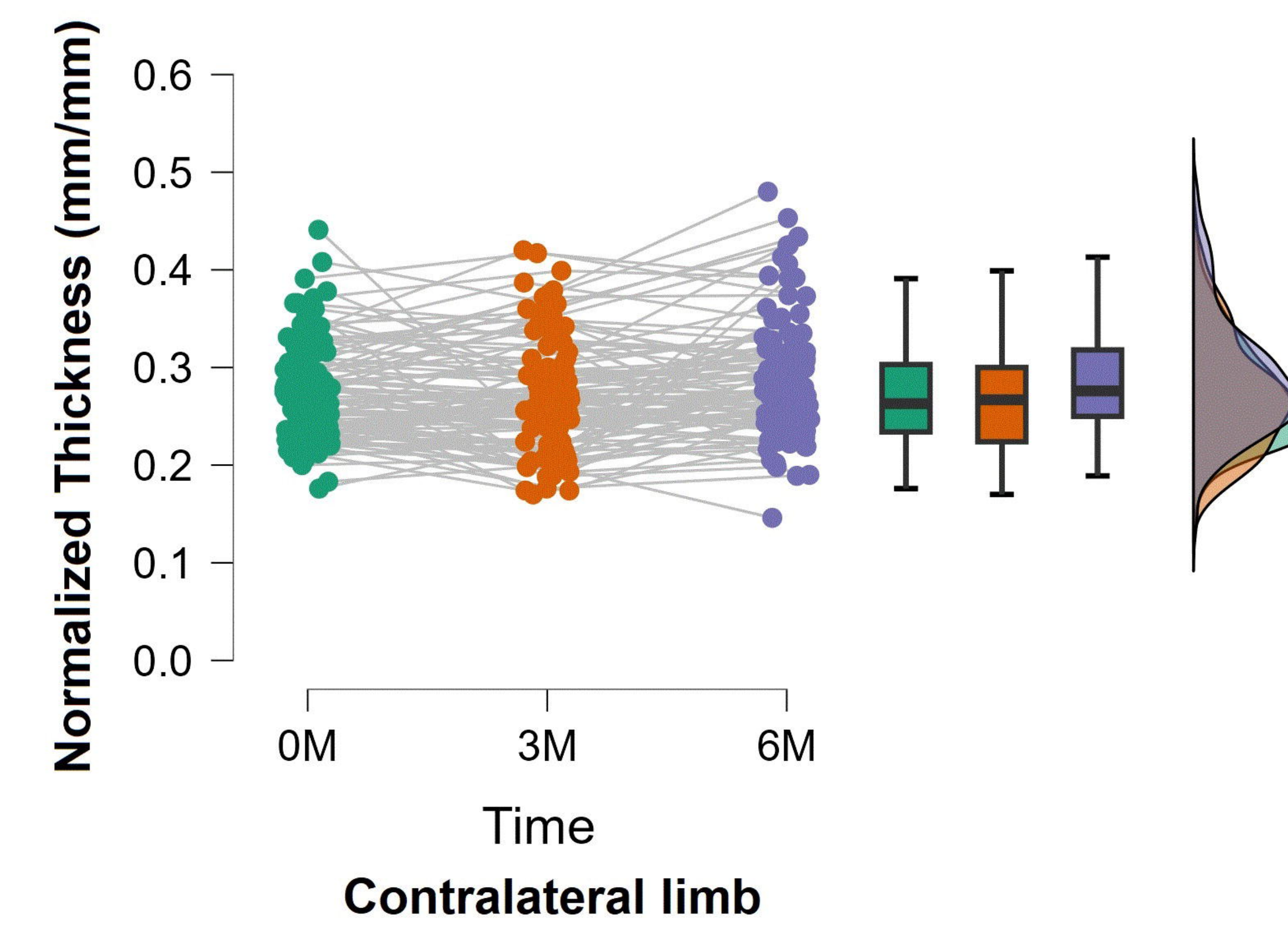
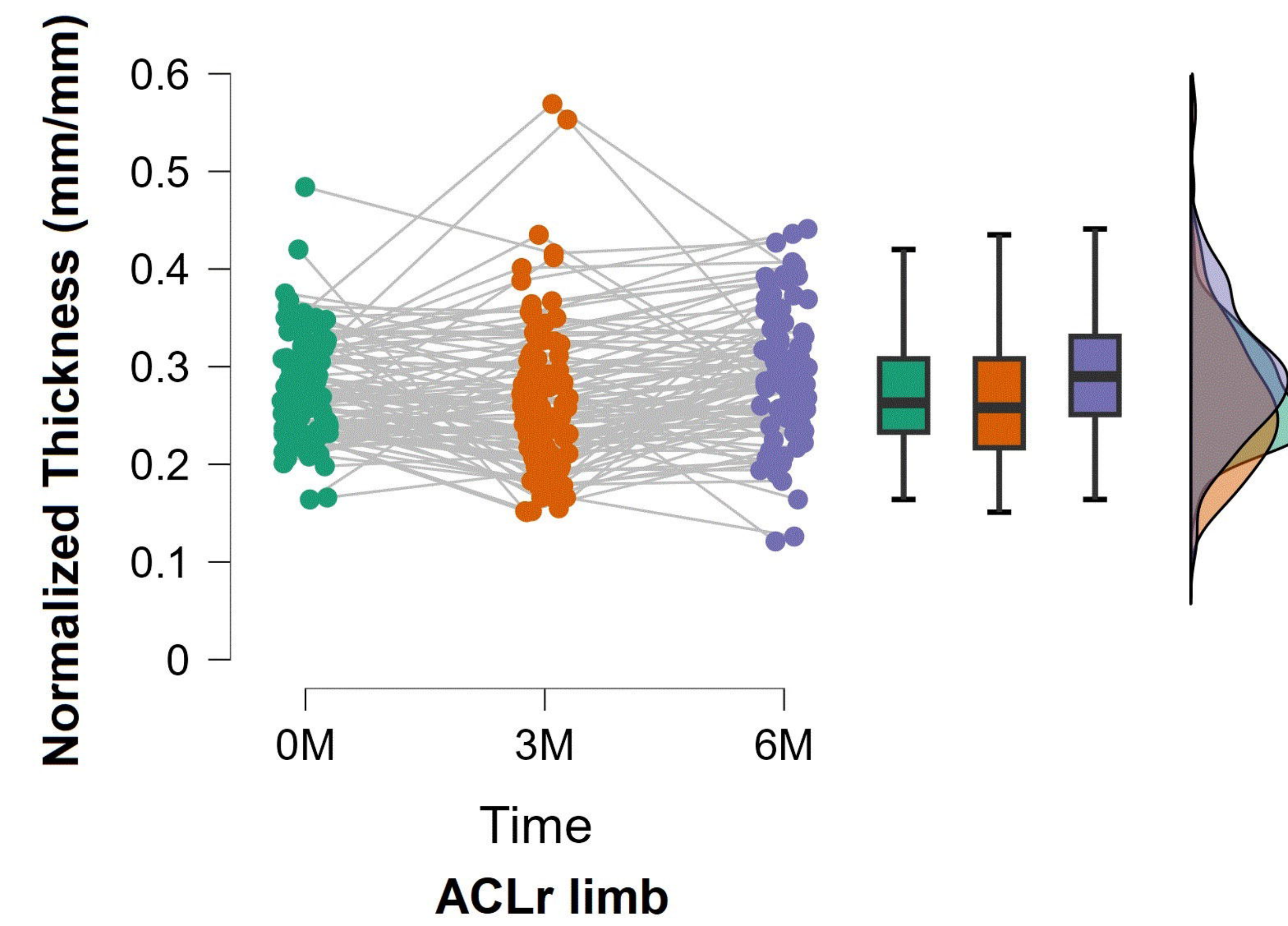
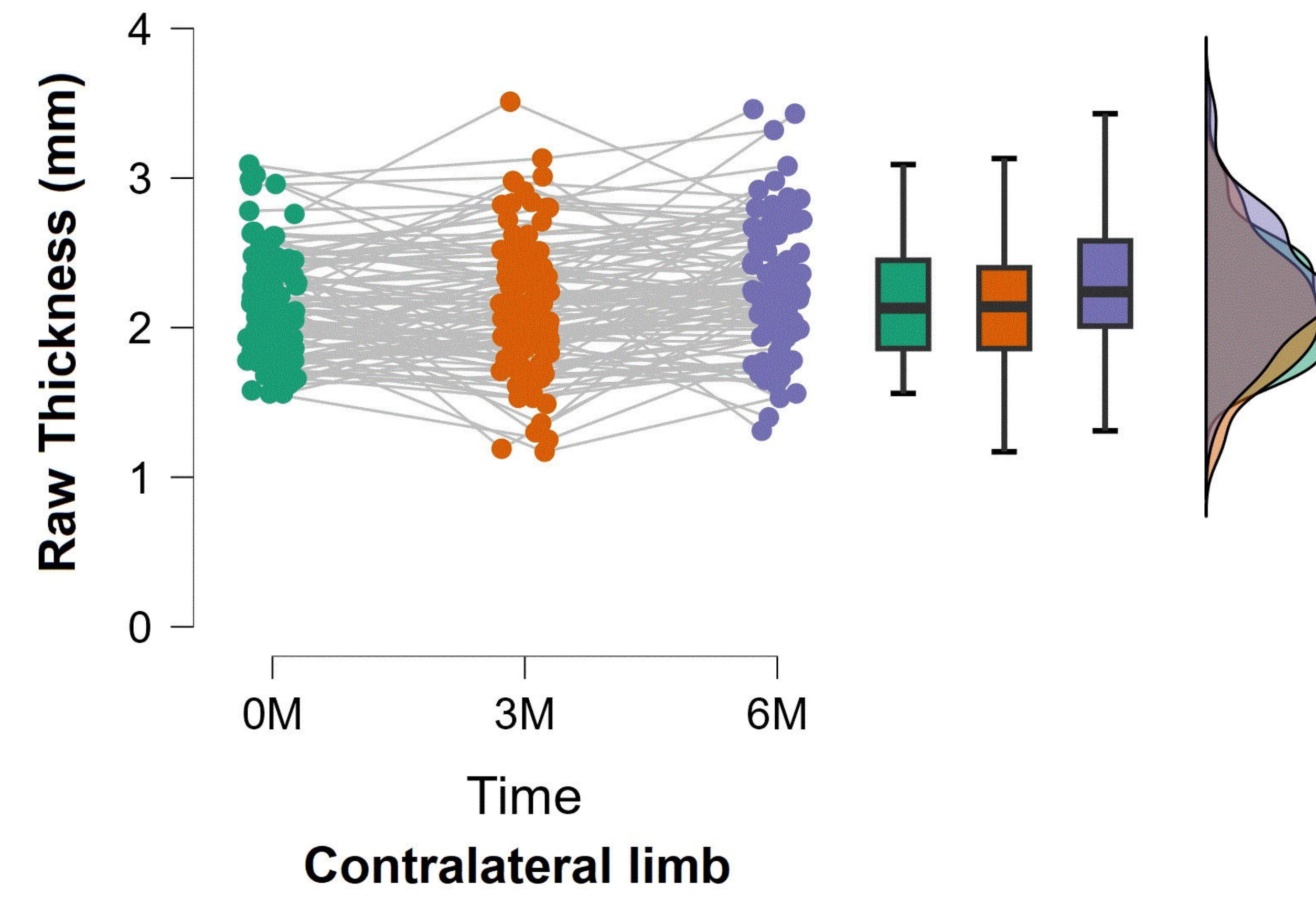
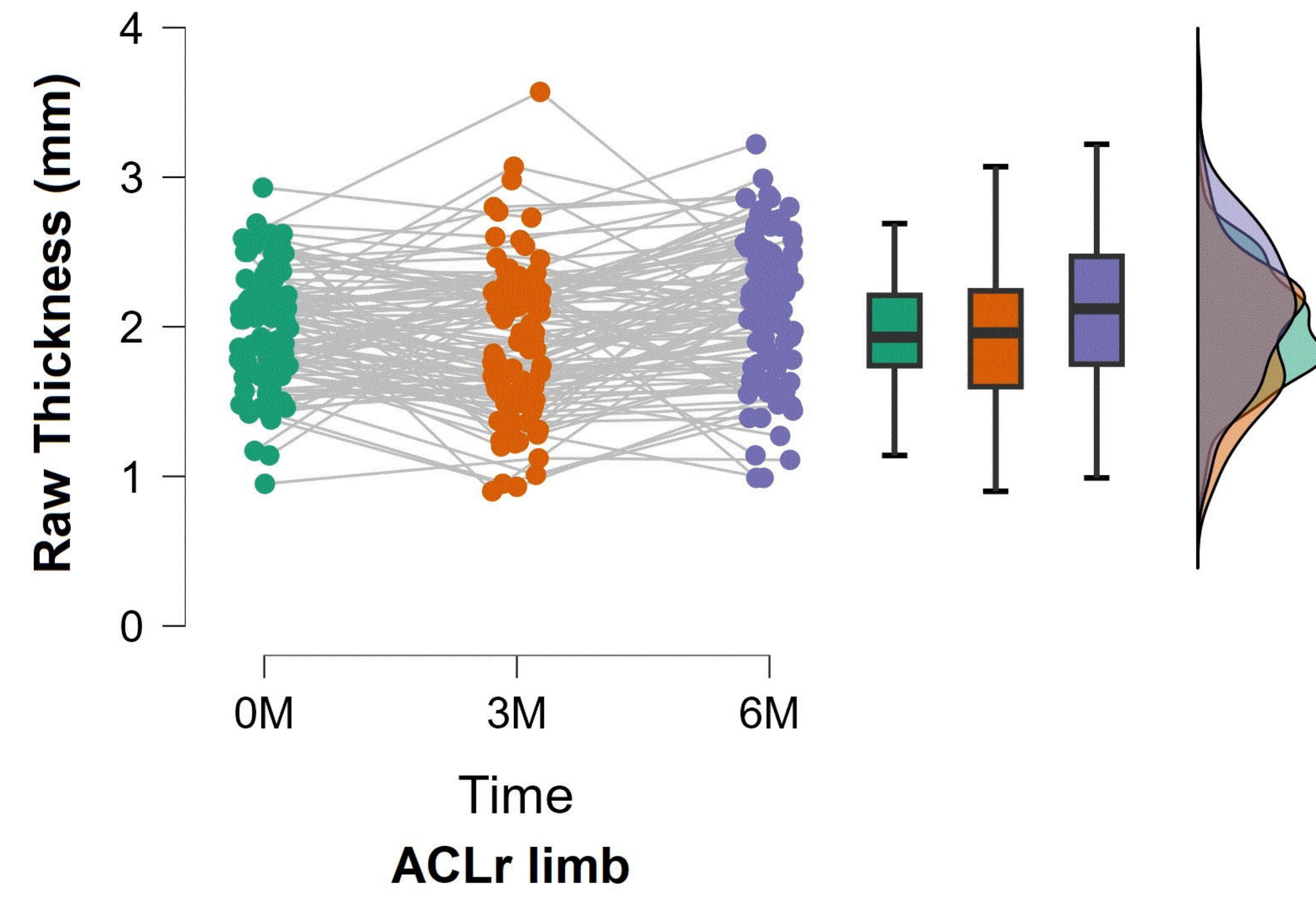
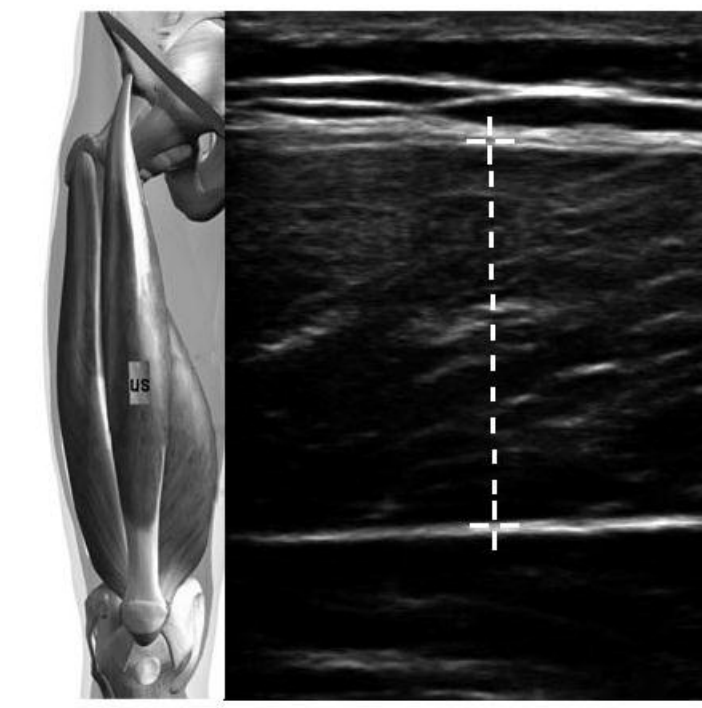
Figure 1. Time course thickness adaptation of quadriceps after an Anterior Cruciate Ligament reconstruction for Rectus Femoris (RF) and Vastus Intermedius (VI). The upper row of figures shows the ultrasonography probe location on RF and the raw and normalized outputs for the limb with Anterior Cruciate Ligament reconstruction (ACLR) and contralateral. The bottom row of the figures shows the ultrasonography probe location on VI, and the raw and normalized outputs for the limb with ACLR and contralateral.

Figure 2. Time course thickness adaptation of quadriceps after an Anterior Cruciate Ligament reconstruction for Vastus Lateralis (VL), Vastus Medialis (VM) and Total Thickness (TTh). The upper row of figures shows the ultrasonography probe location on VL and the raw and normalized outputs for the limb with Anterior Cruciate Ligament reconstruction (ACLR) and contralateral. The middle row of figures shows the ultrasonography probe location on VM, and the raw and normalized outputs for the limb with ACLR and contralateral. The bottom row of the figures shows the Total Thickness (TTh) estimation and the raw outputs for the limb with ACLR and contralateral.

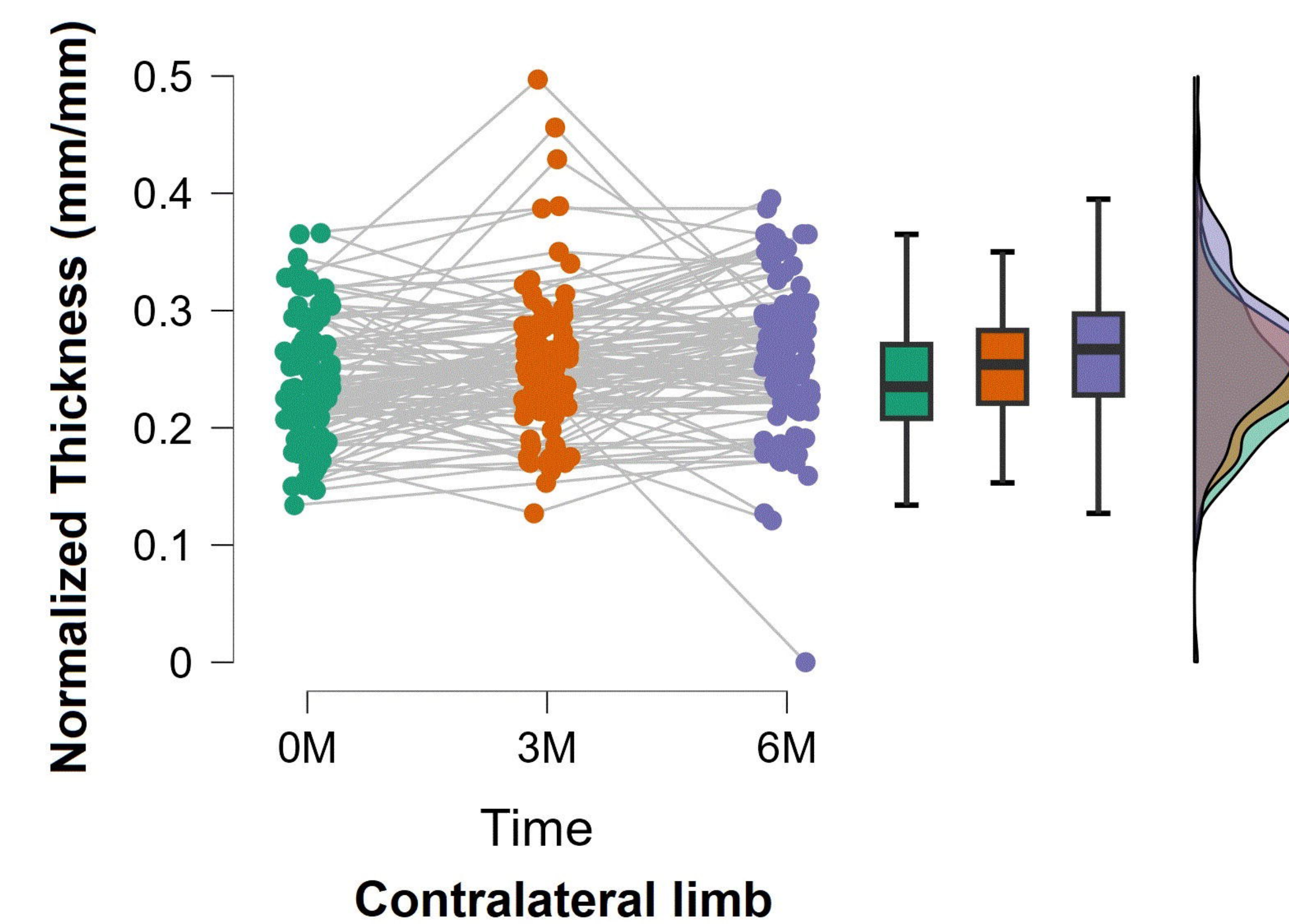
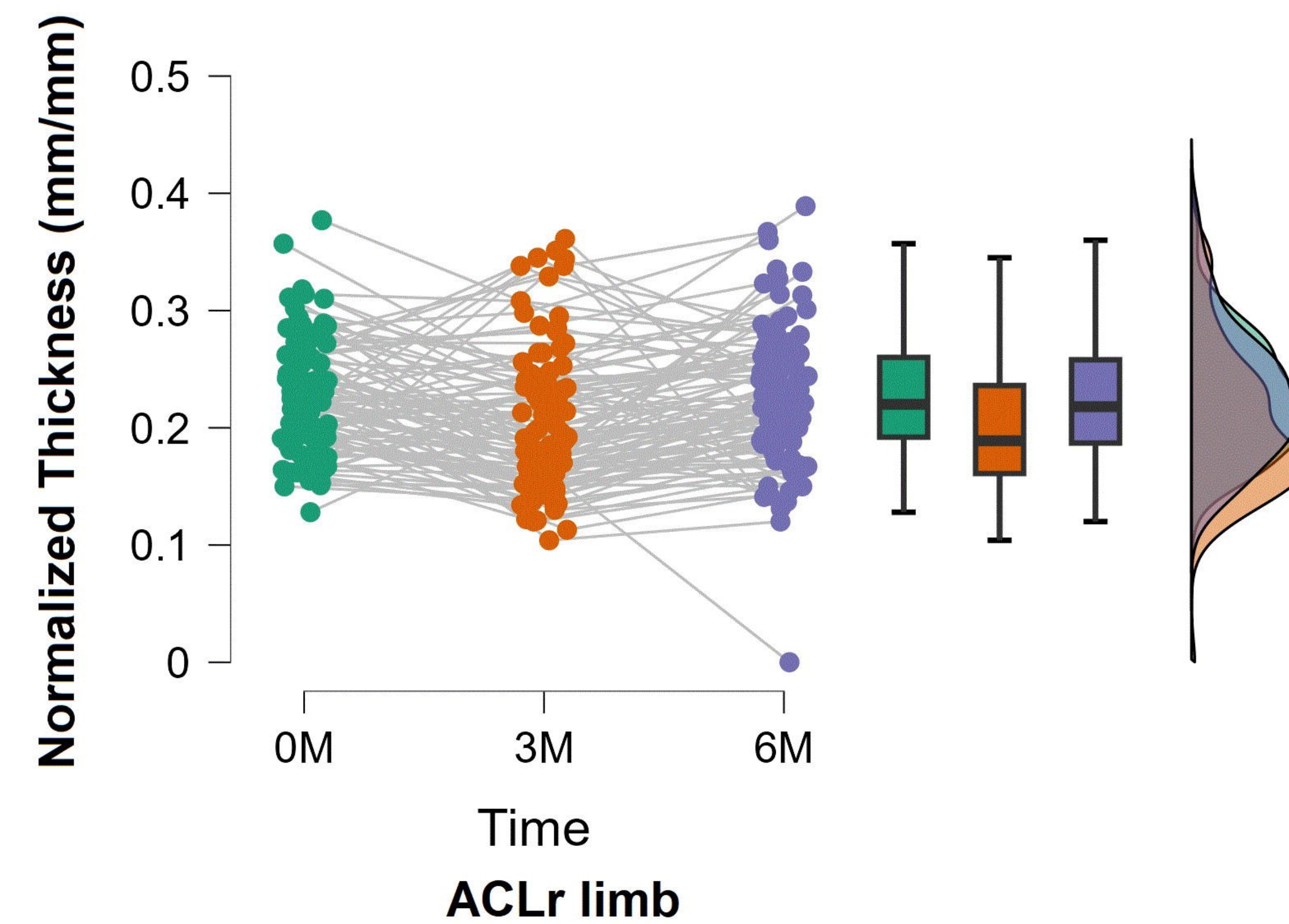
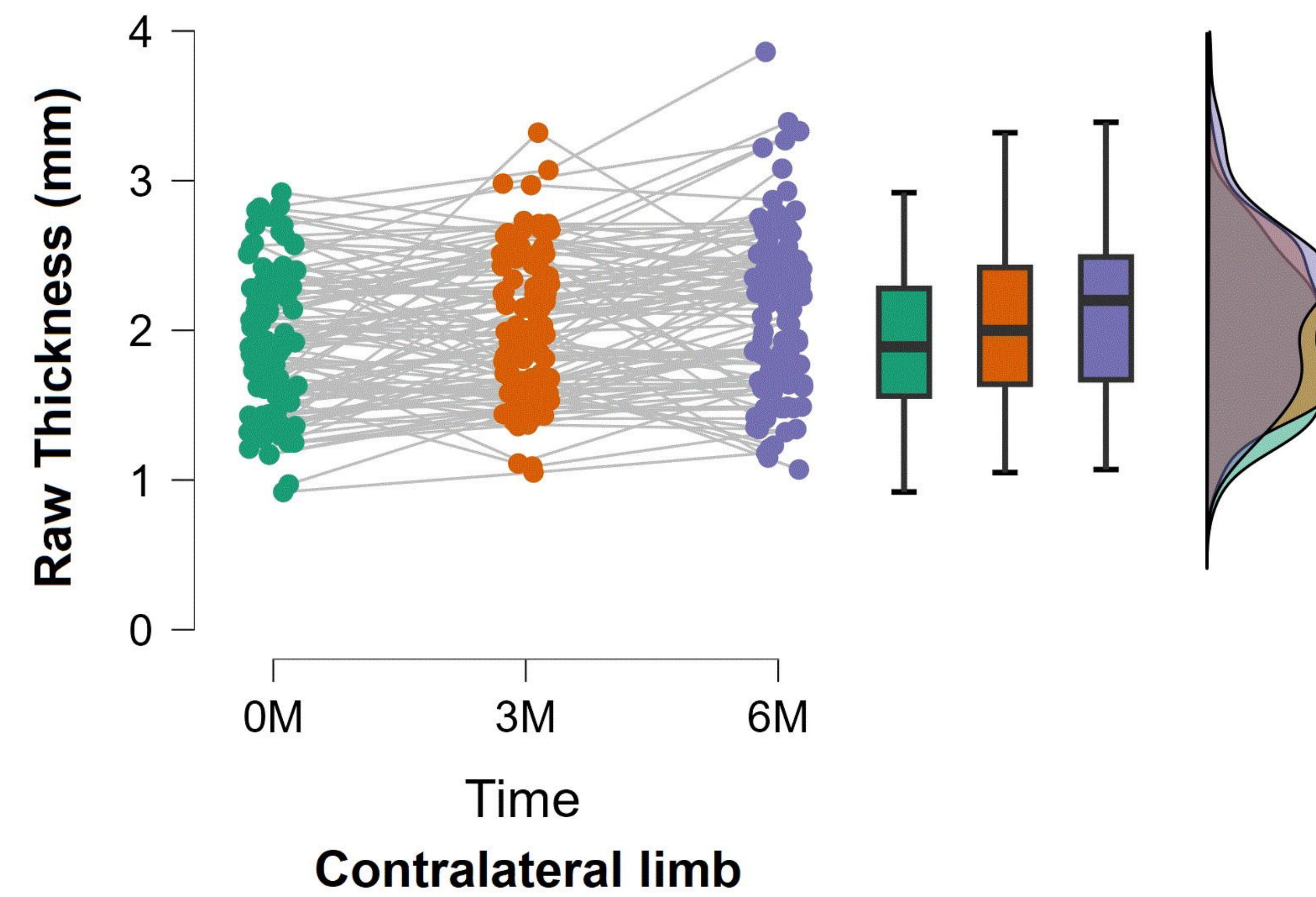
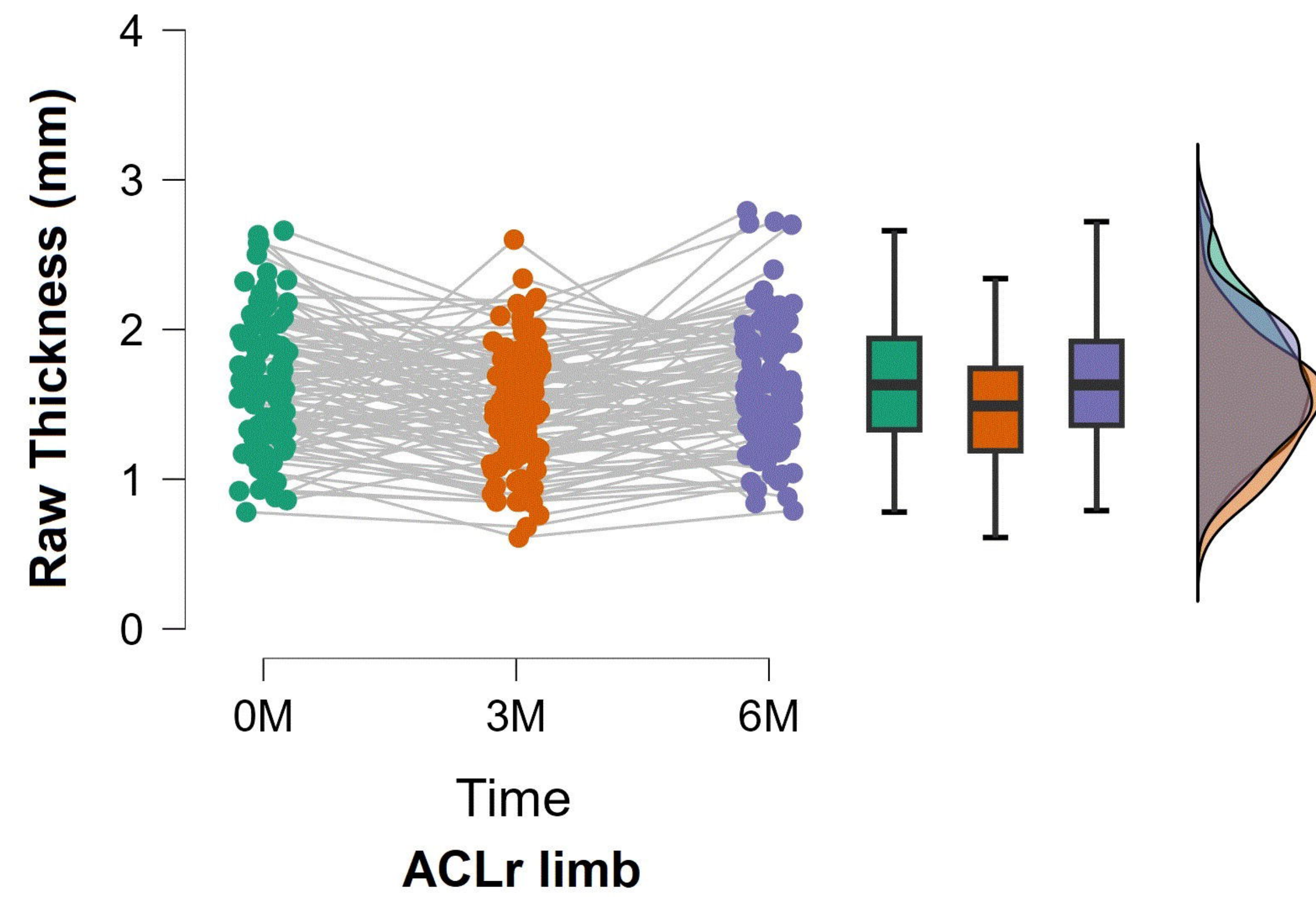
Figure 3. Quadriceps strength and knee circumference within 6 months after Anterior Cruciate Ligament reconstruction. The upper row of figures shows the raw and normalized quadriceps strength for the limb with Anterior Cruciate Ligament reconstruction (ACLR) and contralateral. The bottom row of the figures shows the raw and normalized circumferences for the limb with ACLR and contralateral.

Figure 4. Mediation analysis on the time course of the quadriceps muscle strength (F). The vastus intermedius (VI) and medialis (VM) Thickness have an indirect effect on muscle Force (F) through the Total Thickness of the quadriceps (Th). The rectus femoris (RF) and vastus lateralis Thickness (VL) have a direct effect on muscle Force (F) following an Anterior Cruciate Ligament reconstruction within the first six months. Betas coefficients are described across the path, the variance of each latent factor as a double arrow, Covariance as straight vertical lines, the determinant coefficient as R-square, and the significant effect as a percentage.

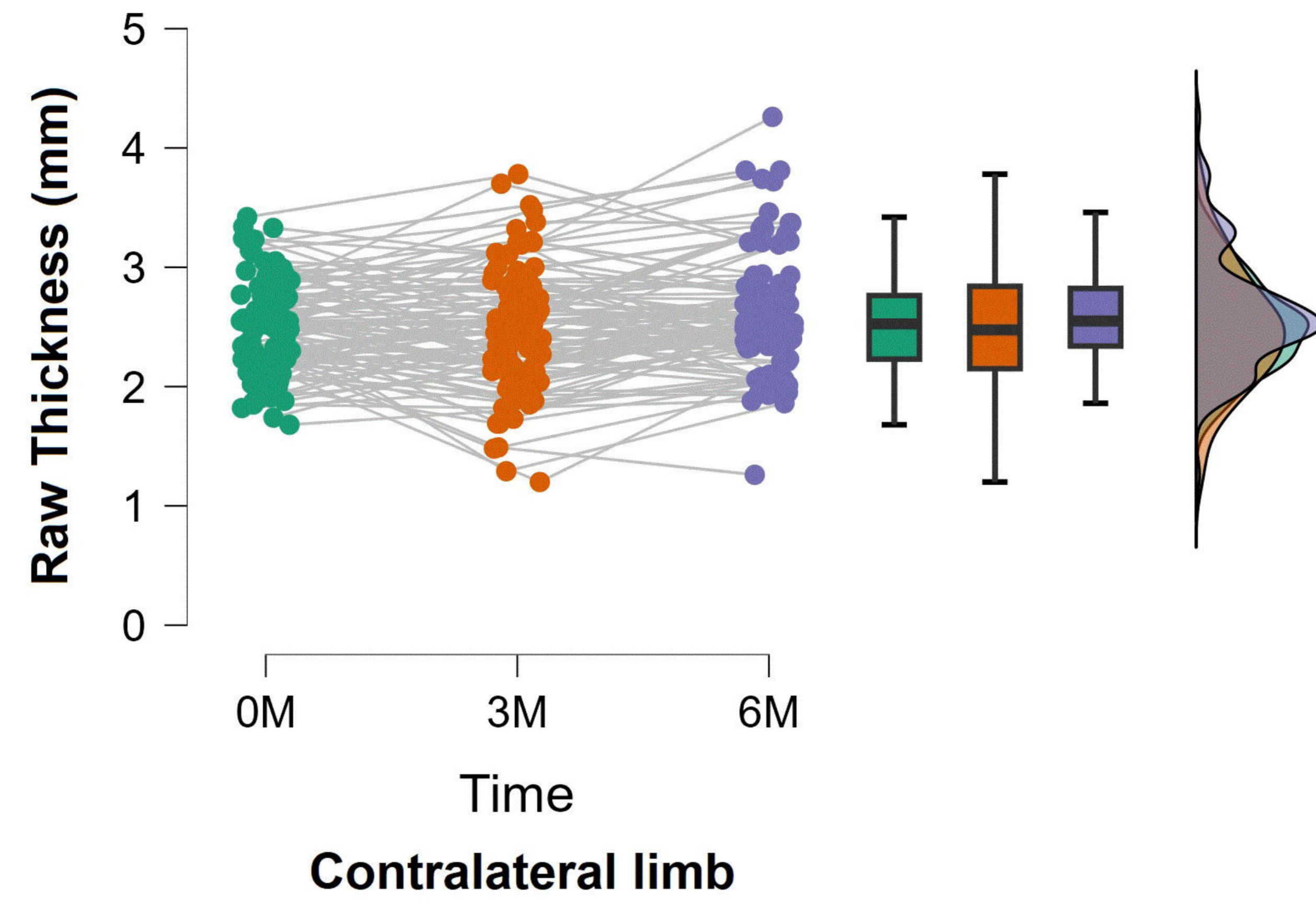
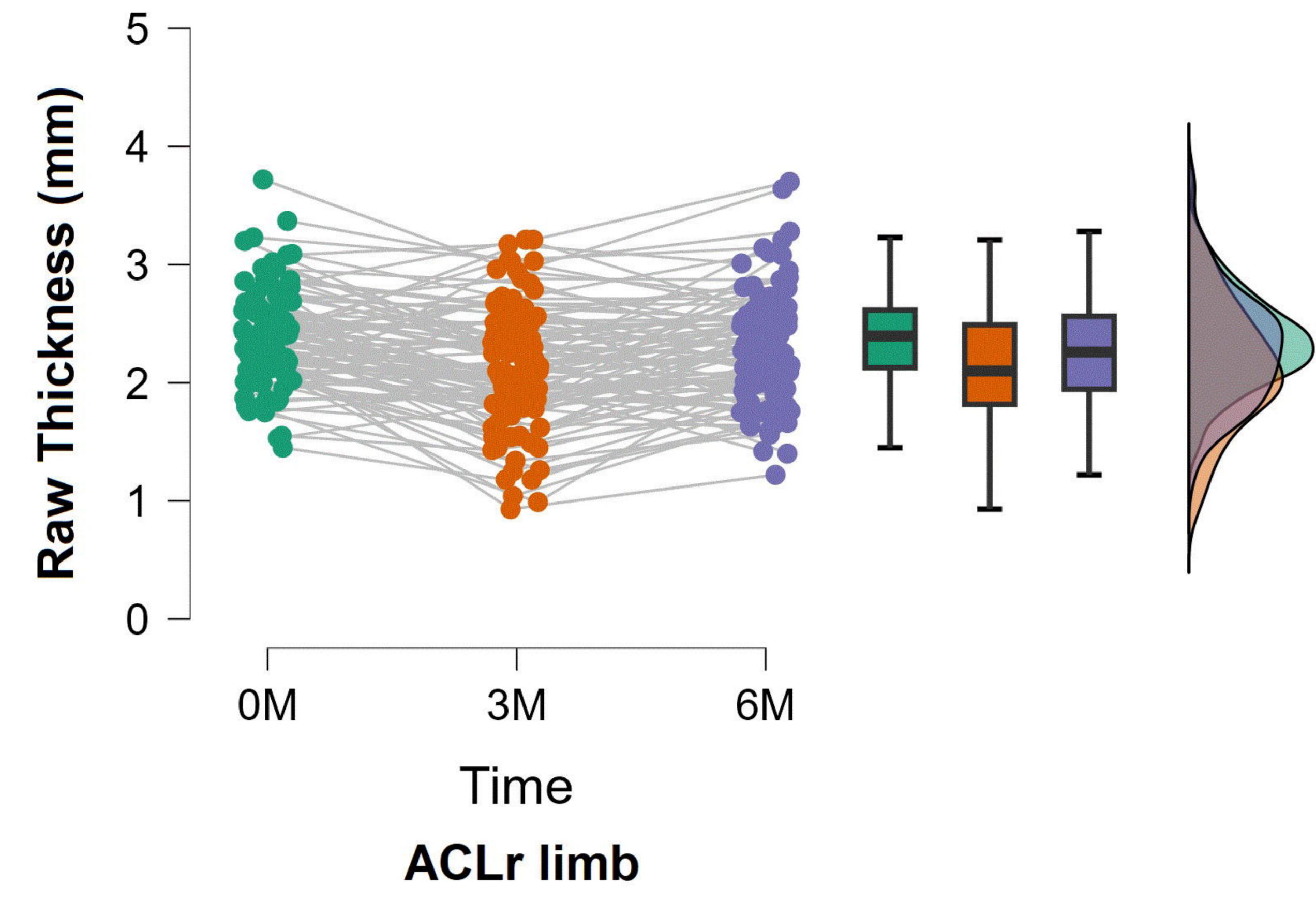
RF



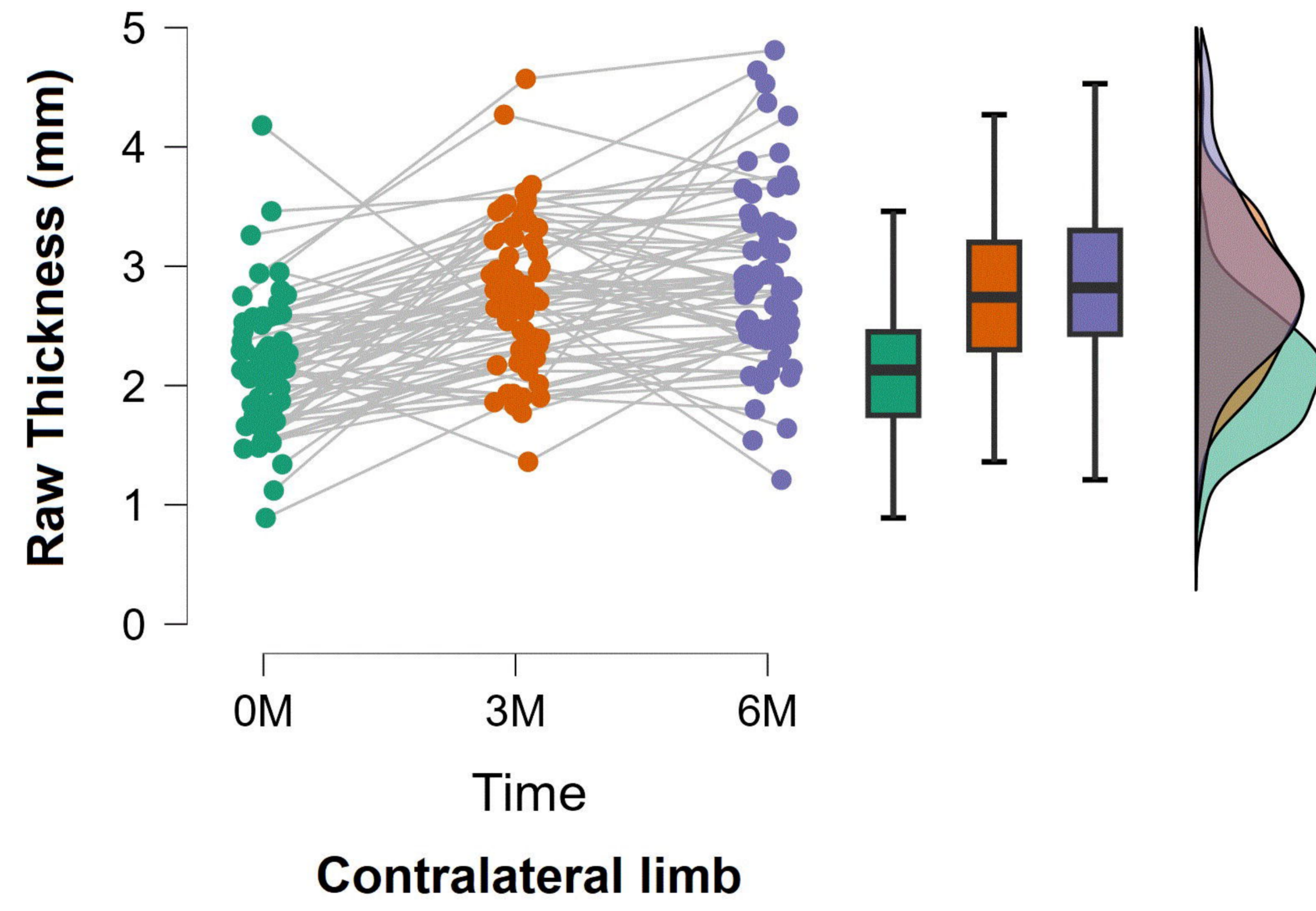
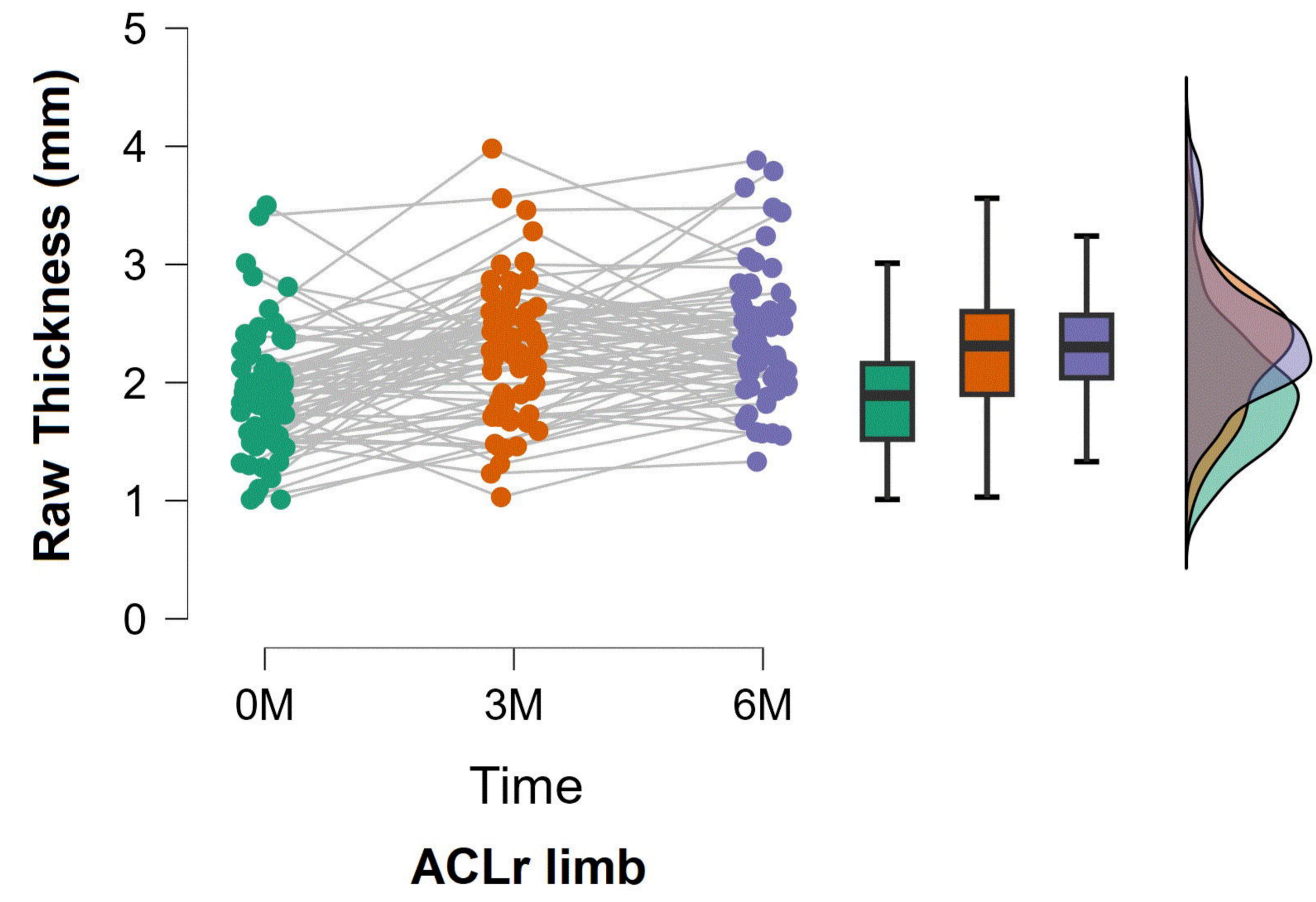
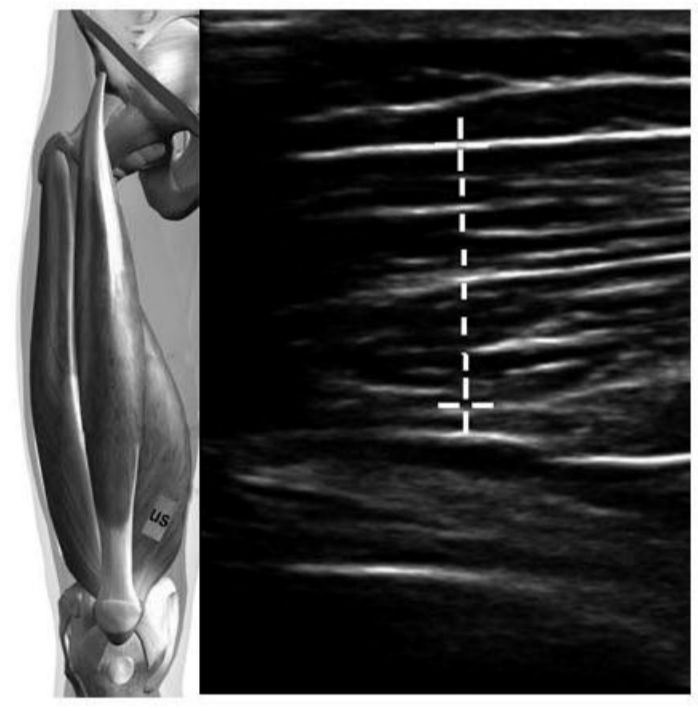
VI



VL

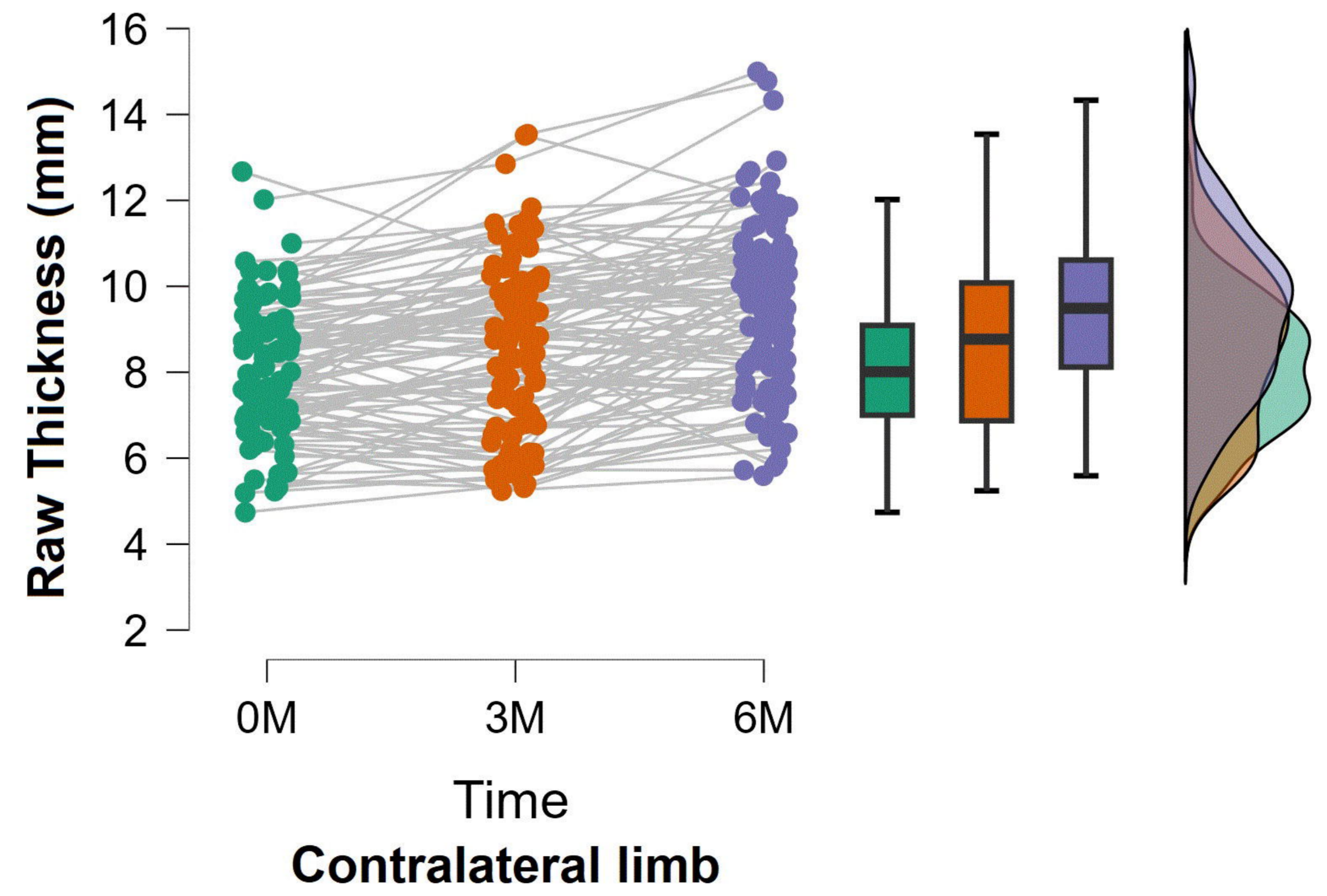
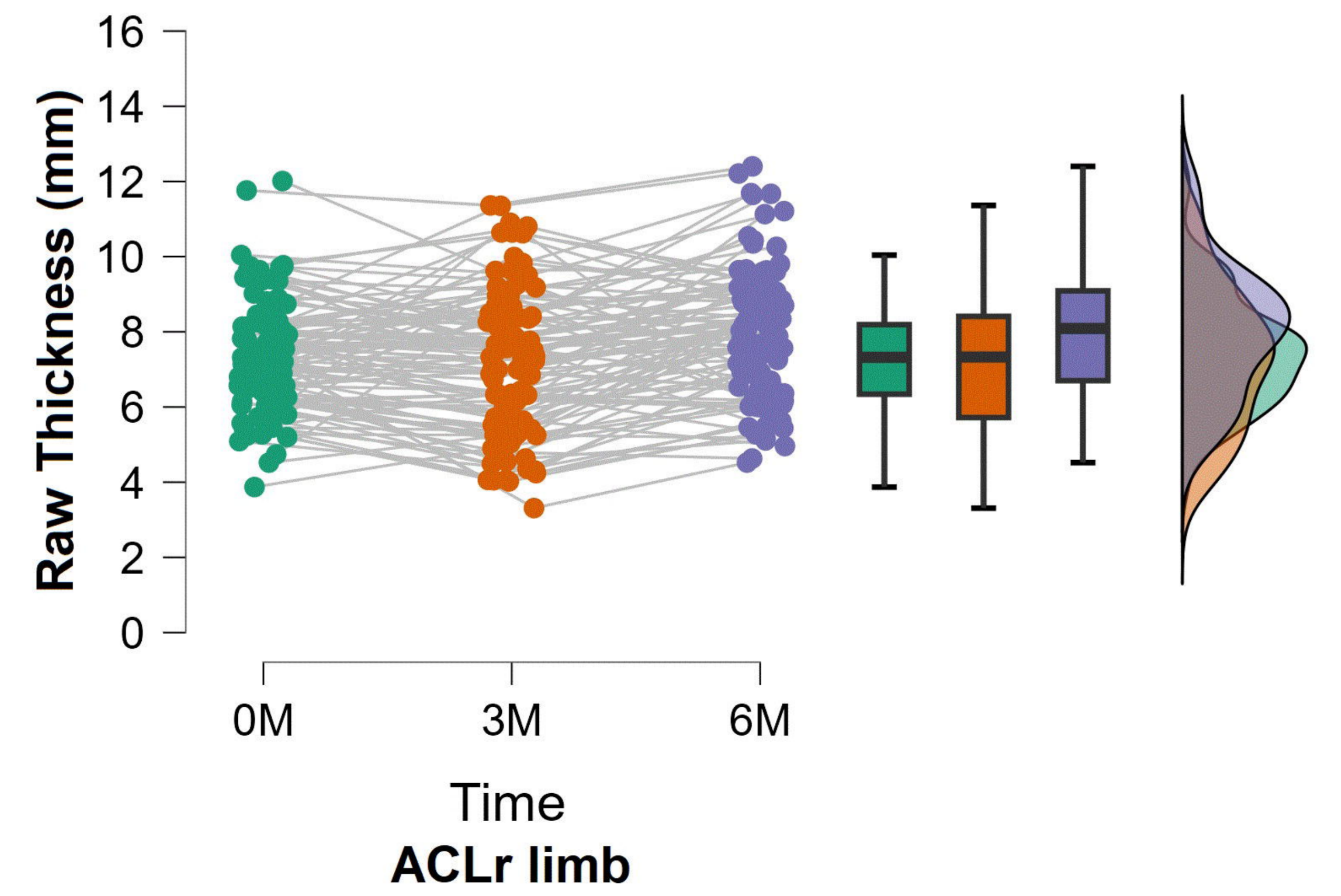


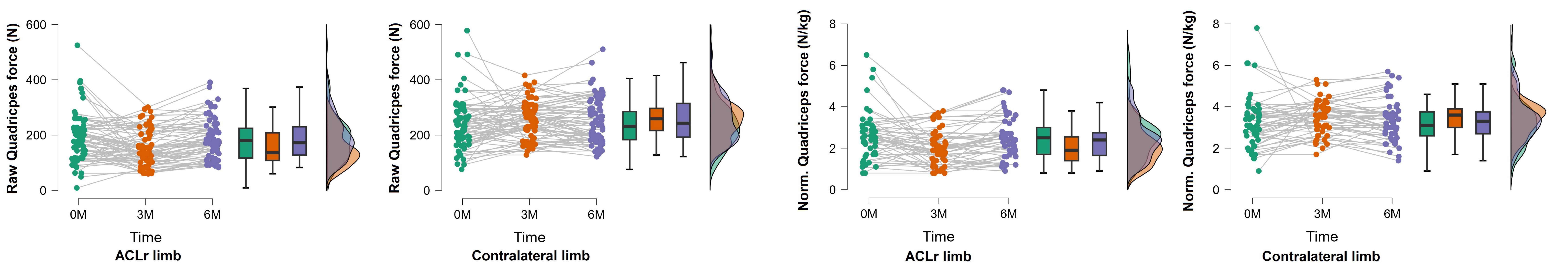
VM



TTh

$$\sum_1^i (\text{Muscle Thickness})_i$$





medRxiv preprint doi: <https://doi.org/10.1101/2024.11.05.24318670>; this version posted November 5, 2024. The copyright holder for this preprint (which was not certified by peer review) is the author/funder, who has granted medRxiv a license to display the preprint in perpetuity. All rights reserved. No reuse allowed without permission.

