

1 **Implementation of Point of Care HIV Viral load monitoring**  
2 **for people living with HIV in Low and Middle-income**  
3 **Countries: A systematic review on implementation research**  
4 **outcomes.**

5 Perry Msoka<sup>1,2,3</sup>, Iraseni Swai<sup>1,3,4</sup>, Kennedy Ngowi<sup>1</sup>, Ria Reis<sup>3,5</sup>, Andreja Lekic<sup>2</sup>, Blandina T.  
6 Mmbaga<sup>1,6,7</sup>, Anita Hardon<sup>3,8</sup>, Marion Sumari-de Boer<sup>1,3,6,8</sup>

7

8 Affiliations:

9 1. Kilimanjaro Clinical Research Institute, Moshi, Tanzania

10 2. Amsterdam Institute for Social Science Research, Amsterdam, the Netherlands

11 3. Amsterdam Institute for Global Health and Development, Amsterdam, the Netherlands

12 4. UMC Amsterdam, location AMC, Amsterdam, the Netherlands

13 5. The Children's Institute, University of Cape Town, Cape Town, South Africa

14 6. Kilimanjaro Christian Medical University College, Moshi, Tanzania

15 7. Kilimanjaro Christian Medical Centre, Moshi, Tanzania

16 8. Knowledge, Technology and Innovation Chair group, Social Sciences Department,  
17 Wageningen University & Research, the Netherlands

18

19

20 Corresponding author: Perry Cyril Msoka. Kilimanjaro Clinical Research Institute  
21 Moshi, Kilimanjaro, Tanzania  
22 p.msoka@kcri.ac.tz

23

24

25

26

27

28

29

30

31

32

33

## 34 **Abstract**

### 35 **Background**

36 Viral load monitoring has rapidly increased among people living with HIV(PLHIV) in low- and  
37 middle-income countries (LMICs), resulting in an increased laboratory workload. The use of  
38 innovative Point of Care (PoC) or near Point of Care (n)PoC HIV Viral Load (HIV VL)  
39 monitoring has enabled improved patient care, a reduction in laboratory workload, improved  
40 clinic retention and reduced turnaround time of results. However, implementation bottlenecks of  
41 such methods are uncertain, especially when PoC or (n)PoC is implemented in remote areas in  
42 low-volume clinics. The main aim of this study was to review implementation research outcomes  
43 of (n)PoC HIV VL monitoring for PLHIV in LMICs.

### 44 **Methodology**

45 We qualitatively synthesised peer-reviewed papers to explore implementation research outcomes  
46 (IROs) of (n)PoC HIV VL monitoring. We identified studies published between January 2013  
47 and June 2024. We used the IROs described by Proctor et al., which are acceptability, adoption,  
48 appropriateness, cost, feasibility, fidelity, penetration and sustainability. We searched using the  
49 following Mesh terms: Point of care testing, HIV, viral load, acceptability, patient acceptance of  
50 health care, adoption, facilities and services utilisation, appropriateness, cost, feasibility, fidelity,  
51 penetration, coverage, sustainability and continuity of patient care through PubMed, Cochrane  
52 and Scopus. The PRISMA diagram in Figure 1 presents the selection process of included papers.

### 53 **Results**

54 Twenty-five studies reported implementation outcomes of PoC or (n)PoC HIV VL monitoring.  
55 Near PoC HIV VL monitoring using GeneXpert is considered acceptable to patients and  
56 healthcare providers. Point of care HIV VL monitoring using mPIMA was feasible as patients  
57 received the results the same day. From a health service provider's perspective, PoC HIV VL  
58 monitoring was acceptable because it influenced patients to accept the illness and adhere to  
59 medication. Additionally, there was high testing coverage in routine PoC HIV VL monitoring  
60 centres. Fidelity was questionable in some settings due to (n)PoC HIV VL monitoring results not  
61 being delivered as intended. Additionally, we found in several studies that the (n)PoC costs are  
62 higher than standard of care test, USD 54.93 per test, at low testing volume clinics conducting  
63 20VL tests per month compared to costs of USD 24.25 at high testing volume clinics conducting

64 100VL tests per month. However, costs are expected to be lower when (n)PoC HIV VL  
65 monitoring is scaled up and targeted for those at risk.

## 66 Conclusion

67 Implementation of PoC or (n)PoC testing for HIV viral load monitoring is acceptable and  
68 feasible and can reach a vast population. However, higher costs, limited fidelity, lower  
69 penetration and limited sustainability may hinder using (n)PoC testing in improving patient care  
70 and health outcomes. More knowledge and training should be implemented to overcome these  
71 challenges.

72

73

74 Keywords: Point of Care HIV Viral Load monitoring; People living with HIV; systematic  
75 review; Implementation research outcomes; Low and middle-income countries

76

77

78

79

80

81

82

83

84

85

## 86 Introduction

87 Globally, an estimated 39.9 million people were living with Human Immunodeficient Virus  
88 (HIV) in 2023, of whom 77% of adults and 57% of children accessed antiretroviral therapy  
89 (ART).(1) The Joint United Nations Programme on HIV and AIDS (UNAIDS) aims to reach 95-

90 95-95 targets by 2030 that 95% of people living with HIV (PLHIV) know their HIV status, 95%  
91 of diagnosed PLHIV receive antiretroviral therapy (ART), and 95% of PLHIV receiving ART  
92 attain viral suppression below 1,000 copies/ml.(2) To reach these goals, the World Health  
93 Organization (WHO) emphasizes that all PLHIV receive ART and routine HIV viral load (VL)  
94 testing to monitor treatment response, adherence and virologic suppression.(3)

95 However, monitoring the VL of PLHIV on ART in resource-limited settings is still challenging  
96 due to limited infrastructure, shortage of skilled staff, loss of samples, an inefficient system of  
97 providing results and patients being lost to follow-up.(4) To overcome those challenges, WHO  
98 has advocated for integrating Point of care HIV Viral load (PoC HIV VL) monitoring in HIV  
99 care services.(5,6)

100 Point of Care HIV VL monitoring entails testing at the point where healthcare is provided. The  
101 results can be given on the same day. Also, it can usually be performed by non-trained staff.(7)  
102 Near Point of Care HIV VL monitoring is testing in laboratories close to treatment facilities,  
103 while still improving the turnaround time from sampling to result.(8) The current PoC HIV VL  
104 assays that are commercially available or in late development include the PoC HIV assay of  
105 mPIMA by Abbott, and the (n)PoC HIV assays SAMBA by Diagnostics for the Real World and  
106 GeneXpert HIV 1 by Cepheid.(9)

107 Several studies have been conducted on the performance of PoC HIV VL monitoring. In  
108 Mozambique, mPIMA was found to have a high sensitivity of 95% and specificity of 96.5% to  
109 identify virological failure at the threshold of 1000 copies/ml when a standard conventional  
110 plasma test was used as the golden standard.(10) In addition, a study evaluating the performance  
111 of SAMBA in Malawi and Uganda found it to be accurate in differentiating patients who had a  
112 VL below or above 1000 copies/ml.(11)

113 Furthermore, a systematic review study from developed and developing countries found that PoC  
114 testing is preferable to centralized testing, with a sensitivity of 93.3%- 100% and specificity of  
115 99.5%- 100% for Early Infant Diagnosis (EID), acute HIV infection diagnosis, or VL  
116 monitoring.(12)

117 Despite the good performance of PoC HIV VL monitoring in previous studies, several challenges  
118 exist. A systematic review of the performance and clinical utility of POC HIV viral load testing

119 in resource-limited settings observed that there is a need for constant electricity for the machine  
120 to function and a temperature control room for sample processing and storage.(12)

121 Other reported challenges of PoC HIV VL monitoring are device operation by untrained staff,  
122 routine device maintenance, and the high costs of a PoC test. All these may hamper the  
123 implementation of PoC HIV VL monitoring.

124 Given the above-reported challenges, future studies should explore solutions to overcome  
125 possible implementation challenges. Proctor and colleagues (2011) designed a framework that  
126 describes eight distinct implementation outcomes to guide the successful implementation of  
127 innovations: acceptability, adoption, appropriateness, feasibility, fidelity, implementation costs,  
128 penetration and sustainability. Acceptability is the perception among stakeholders that a given  
129 treatment, service, practice, or innovation is agreeable, palatable, or satisfactory. Secondly,  
130 adoption is the intention, initial decision, or action to try or employ an innovation or evidence-  
131 based practice. Thirdly, appropriateness is the perceived fit of the innovation to address a  
132 particular issue or problem. Fourthly, the cost is the financial effect of an implementation effort.  
133 It may include charges for treatment delivery, implementation strategy and use of the service  
134 setting. Fifthly, feasibility is how a new treatment or innovation can be successfully used or  
135 carried out within a given agency or setting. Sixthly, fidelity is defined as the extent to which an  
136 intervention was implemented as prescribed in the original protocol or as the program developers  
137 intended. Seventhly, penetration is integrating practice within a service setting and its  
138 subsystems. Lastly, sustainability is how a newly implemented intervention is maintained or  
139 institutionalised within a service setting's ongoing, stable operations. These implementation  
140 outcomes can give insights into challenges and assist in developing strategies to be investigated  
141 in future pragmatic trials.(13)

142 In this systematic review, we use the Proctor framework to explore implementation research  
143 outcomes of (n)PoC HIV VL monitoring for PLHIV in LMICs through a qualitative synthesis of  
144 peer-reviewed papers. The specific objectives were to review existing evidence on (1) the  
145 acceptability, (2) the adoption, (3) the appropriateness, (4) the cost, (5) the feasibility, (6) the  
146 fidelity, (7) the penetration and (8) the sustainability of (n)PoC HIV VL monitoring.

147

## 148 **Methodology**

149 Using the reporting items in systematic review guideline(14) we qualitatively synthesised  
150 scientific papers to explore the implementation research outcomes (IROs) of PoC HIV VL  
151 monitoring for PLHIV. We used the Proctor framework of IROs and pre-defined topics to define  
152 the search terms.(13)

### 153 **Literature search**

154 The initial broad relevant MESH terms were defined based on the terms ‘PoC testing’, ‘HIV’ and  
155 ‘Viral load’. We viewed the proper entry terminology for the IROs: Acceptability, Adoption,  
156 Appropriateness, Cost, Feasibility, Fidelity, Penetration and Sustainability. After defining these  
157 terms, we searched for the terms in June 2024 using a combination of the MESH and entry  
158 terms. A detailed search strategy is presented in the S1 Table.

159 Three databases were searched for publications published between January 2013 and June 2024:  
160 (1) PubMed, (2) Cochrane and (3) Scopus. After this, we scanned the reference list of each  
161 obtained publication found through the above search for additional publications that could fit our  
162 search criteria.

### 163 **Study selection**

164 Publications were included based on the following criteria:

- 165 • Quantitative, including trials or qualitative studies.
- 166 • Original papers.
- 167 • Focus on (n)PoC VL monitoring.
- 168 • A publication should at least describe one of the IROs as described by Proctor.

169  
170 We used Covidence software <https://support.covidence.org/help/how-can-i-cite-covidence> to  
171 select and organise manuscripts and data extraction. The publications were identified and  
172 imported with a librarian (A) into the software for selecting eligible publications. After collecting  
173 publications from PubMed, Cochrane and Scopus, the titles and abstracts of identified studies  
174 were screened by two reviewers (PM, MS) for relevance. Any disagreements during the  
175 screening of titles and abstracts were resolved through discussion. In case of doubt that a  
176 publication met the criteria, it was included for full-text assessment to assess the eligibility. The  
177 full-text assessment of the quality and risk of bias of all included publications was performed by

178 two reviewers (PM, MS). We used the Newcastle Ottawa scale (NOS) to assess the risk of  
179 bias. (15) The tool assessed the bias in three categories which are: selection, comparability, and  
180 outcome or exposure. A star system was used: a score of seven to nine stars was considered a  
181 low risk of bias, four to six stars were considered an “unclear risk of bias”, and three or fewer  
182 stars were considered a “high risk of bias”. The study was considered of low quality if we found  
183 it to have a high risk of bias.

184 All manuscripts included in the full-text assessment were judged based on the quality of the  
185 paper using twenty-seven criteria selected from the PRISMA guidelines for reporting systematic  
186 reviews.(16) The PRISMA checklist can be found in the S2 Table. The twenty selected criteria  
187 covered the following items:

- 188 • The abstract was comprehensive.
- 189 • The objective did clearly state the specific aims of the study.
- 190 • The rationale was based on a well-described literature review.
- 191 • The methodology clearly described qualitative or quantitative methods, research  
192 setting and participants, methods and data collection procedures.
- 193 • Ethical issues were assessed by judging informed consent procedures, voluntary  
194 participation, no harm, confidentiality and anonymity.
- 195 • The analysis and results had to be realistic to achieve the required study objective.

196

197 Exclusion criteria were:

- 198 • Studies with outcomes that were not relevant to our review.
- 199 • Studies describing interventions outside of our area of interest.
- 200 • Studies and reviews of papers published before 2013 in which PoC VL testing  
201 was not widely available or implemented.
- 202 • Protocol studies.

#### 203 [Data extraction and management](#)

204 One reviewer (PM) extracted the data. The following information was extracted from the  
205 included studies:

- 206 • Country where the study was performed

- 207 • Study design classified as clinical trials, cohort, qualitative or modelling studies
- 208 • Study funding sources
- 209 • Population description
- 210 • Study period, start and end date
- 211 • Inclusion and exclusion criteria
- 212 • Methods of recruitment of the participants
- 213 • Implementation of research outcomes (IROs) investigated

214

### 215 Ethical Approval and Informed Consent

216 The review was registered on the PROSPERO registry for systematic reviews. (PROSPERO  
217 2023 CRD42023394668). The review did not involve collecting new data from human subjects.  
218 Therefore, ethical approval and informed consent were not required.

219

## 220 Results

221 Three hundred and thirteen studies were found through the initial search of PubMed, Scopus and  
222 Cochrane, and an additional five studies were found through scanning the reference lists. Forty-  
223 four duplicate studies were removed from the 318 studies. As a result, 274 studies were screened  
224 for eligibility based on title and abstract. From that, 240 irrelevant studies were excluded because  
225 the publications focused on something other than (n) PoC VL monitoring. Thirty-four studies  
226 were assessed on eligibility by reading the full text of the paper. We found that nine studies were  
227 not eligible: three had irrelevant outcomes for our review, three described interventions outside  
228 our area of interest, and three had wrong study designs, as detailed in the S3 Table. This led to 25  
229 studies being included in the final review, as shown in Table 1. The PRISMA diagram showing  
230 detailed information on search results and the selection process is presented in S1 Figure.

231

232

233

234

235

236



237  
238  
239  
240  
241  
242  
243  
244  
245  
246  
247  
248  
249  
250  
251  
252  
253  
254  
255  
256  
257  
258  
259  
260  
261  
262  
263  
264  
265  
266  
267

### Study characteristics

Twenty-five papers were included in this systematic review.(17–41)Among the studies, seventeen were quantitative studies,(18,19,21,22,24–28,30–32,34,36–38,41) six were qualitative studies,(20,29,33,35,39,40) and two were mixed methods studies.(17,23)

268

269

270 **Table 1. Characteristics of included studies.**

Author/Year/ Country	Study design and setting	Data Collection method	Type of POC test		Acceptability	Adoption	Appropriatenes s	Cost (High/ low)	Feasibility	Fidelity	Penetration	Sustainability
			nPoC	PoC								
Boyce et al. (2023) Uganda	Open-label, pilot study in lower-level health centre in rural Uganda	Quantitative	GeneXpert						(n)PoC test was more successful than centralized testing due to a reduction in time to results			
Reif et al. (2022) Haiti	Randomized control trials included HIV AIDS clinic	Quantitative method	GeneXpert		The majority of patients receive results the same day and immediate counselling							
Tembo et al. (2022) Lusaka, Zambia	Purposive sampling included six health facilities	Qualitative method		mPIMA	Patients were influenced to accept the illness and adhere to medication			Low costs of PoC test as the test was done on the spot				

271

272

273

274

275

276

277

278

Author/Year/ Country	Study design and setting	Data Collection method	Type of POC test		Acceptability	Adoption	Appropriatenes s	Cost (High/ low)	Feasibility	Fidelity	Penetration	Sustainability
			nPoC	PoC								
Boeke et al. (2021) Cameroon, Congo, Senegal, Kenya, Tanzania, Zimbabwe, Malawi	Retrospective Study included 57 Public- sector health facilities	Quantitative	GeneXpert	mPIMA			High perceived fit of PoC VL monitoring results available at the PoC or (n)PoC					PoC or (n)PoC test program to be maintained, there is a need for clear protocol diagnostic pathways
Bulterys et al (2021) Kenya	Observation study included five Ministry of Health Facilities	Mixed Methods	GeneXpert				High (n)PoC test costs USD 54.93 in low- volume clinics and a low-cost USD 24.25 in high- volume clinics	Low feasibility in some settings that shared the same instrument caused delays in VL results				

279

280

281

282

283

284

285

Author/Year/ Country	Study design and setting	Data Collection method	Type of POC test		Acceptability	Adoption	Appropriatenes s	Cost (High/ low)	Feasibility	Fidelity	Penetration	Sustainability
			nPoC	PoC								
Gueguen et al. (2021) Malawi and Uganda	Cohort study included four HC, one DH, one RH	Quantitative	SAMBA 1 VL			Turnaround time within a short period from blood draw to results was reduced			(n)PoC test was more successful than centralized testing		Manpower insufficient and high workload	(n)PoC test in clinics with challenges of staff availability and power
Sharma et al. (2021) South Africa	Randomized control trials included large public clinic	Quantitative method	GeneXpert		The majority of patients receive results the same day and immediate counselling							(n)PoC test increased in healthcare settings, providing adequate care according to patient needs
Wang et al. (2022) Malawi and Zimbabwe	Quantitative study in 18 health facilities	Clinic register and patient charts	GeneXpert						Multidisea se tool was highly feasible to scale up HIV testing	Lack of training to implement well (n)PoC test		

286

287

288

289

290

Author/Year/ Country	Study design and setting	Data Collection method	Type of POC test		Acceptability	Adoption	Appropriatenes s	Cost (High/ low)	Feasibility	Fidelity	Penetration	Sustainability
			nPoC	PoC								
Broucker et al. (2021) Southern Zambia	Cohort study included healthcare facilities in Southern Zambia	Quantitative	GeneXpert	mPIMA				Low costs in PoC or (n)PoC test including the test to confirm treatme nt failure and shifting to second- line ART regimen				
Ganesh et al. (2021) Malawi	Observation study included two large health facilities	Quantitative method	GeneXpert						(n)PoC test was more successful than centralized testing			

291

292

293

Author/Year/ Country	Study design and setting	Data Collection method	Type of POC test		Acceptability	Adoption	Appropriatenes s	Cost (High/ low)	Feasibility	Fidelity	Penetration	Sustainability
			nPoC	PoC								
Villa et al.(2020) Ghana	Prospective pilot study included large hospitals	Quantitative	GeneXpert		Same-day result reduces drug resistance							
Drain et al. (2020) South Africa	Randomized control trials included large urban clinic	Quantitative method	GeneXpert	mPIMA	PoC or (n)PoC test improves HIV care and increases ART adherence monitoring			PoC or (n)PoC test shows no delays in diagnosis and sufficient manpower				
Kufa et al. (2020) South Africa	Prospective Feasibility included four tertiary obstetric units	Qualitative method	GeneXpert	mPIMA				Multidisease tool was highly feasible to scale up HIV testing			Nurses are supported in managing stable patients through guidelines	
Msimango et al. (2020) South Africa	Randomized control trial included research clinic	Qualitative method	GeneXpert		(n)PoC test minimised the frequency of clinic visits for high-risk patients		Low appropriatenes of (n)PoC test in public health facilities with large numbers of people					

294

Author/Year/ Country	Study design and setting	Data Collection method	Type of POC test		Acceptability	Adoption	Appropriatenes s	Cost (High/ low)	Feasibility	Fidelity	Penetration	Sustainability
			nPoC	PoC								
Girdwood et al. (2020) Kenya	Quantitative study included all facilities	Geospatial cost outcome	GeneXpert	mPIMA				Low costs of PoC test to confirm treatment failure				Low sustainability of (n)PoC test in clinics with several challenges of staff availability and power supply
Vasconcellos et al. (2020) Brazil	Quantitative study included hospitals	Quantitative method		mPIMA					High feasibility of PoC due to collection of the low volume of plasma by fingerstick in sites without laboratory infrastructure			
Girdwood et al. (2019) Kenya	Quantitative study included remote healthcare facilities	Geospatial method	GeneXpert			(n)PoC test is adopted well since it is used for multi-disease testing	(n)PoC test produced results immediately					



Author/Year/ Country	Study design and setting	Data Collection method	Type of POC test		Acceptability	Adoption	Appropriatenes s	Cost (High/ low)	Feasibility	Fidelity	Penetration	Sustainability
			nPoC	PoC								
Simeon et al. (2019) South Africa	Randomized control trial included research and urban government clinic	Mixed method	GeneXpert	mPIMA				Low costs of PoC test in high testing volume clinics				
Nicholas et al. (2019) Malawi	Retrospective Cohort included four ART clinics and a district hospital	Quantitative method	SAMBA 1 VL		(n)PoC test improved HIV care and reduced loss of follow-up							
De Necker et al. (2019) Kenya	Cohort modelling study	Quantitative method	GeneXpert					Low costs of (n)PoC test in monitori ng treatme nt failure				
Ndlovu et al. (2018) Zimbabwe	Prospective feasibility study in district hospital and rural primary healthcare facility	Quantitative method	GeneXpert			Multi- disease testing increases system efficiency	High appropriate for multi-disease testing	High costs of (n)PoC fail to manage samples in some clinics				

296

297

Author/Year/ Country	Study design and setting	Data Collection method	Type of POC test		Acceptability	Adoption	Appropriatenes s	Cost (High/ low)	Feasibility	Fidelity	Penetration	Sustainability
			(n)PoC	PoC								
Rasti et al. (2017) Western Uganda	Qualitative study included HC, regional and referral hospital	By Phone	GeneXpert		(n)PoC test improves the rapid treatment of patients after they receive results	Knowledge gaps in interpreting the results			(n)PoC test has been feasible as it strengthens the health system and improves healthcare	(n)PoC test not implemented well due to distrust in test accuracy/lack of training		Low sustainability in clinic with poor documentation of results
Engel et al. (2017) South Africa	Purposive sampling included home, community, clinic, peripheral lab, hospital, a diagnostic company	Qualitative method	GeneXpert		Non- laboratory healthcare workers conducted the (n)PoC test					(n)PoC test was observed that HCWs were not aware and familiar with the guideline		Low sustainability of (n)PoC test in clinics with several challenges of staff availability and power supply
Engel et al. (2015) South Africa	Purposive sampling in two urban and one rural setting	Qualitative method	GeneXpert		Patient adheres to medication. Multi-disease test evaluates multiple health conditions	Immediate provision of results and counselling to a patient		Low costs of (n)PoC test. The test was done on the same day	No delays in diagnosis and sufficient staffing to run the (n)PoC test		Nurses are supported in managing stable patients through guidelines. Manpower insufficient	

Author/Year/ Country	Study design and setting	Data Collection method	Type of POC test		Acceptability	Adoption	Appropriatenes s	Cost (High/ low)	Feasibility	Fidelity	Penetration	Sustainability
			(n)PoC	PoC								
Estill et al. (2013) South Africa	Mathematical Modelling included township ART programs	Quantitative	GeneXpert					Low costs in (n)PoC test included the test to confirm treatme nt failure and shifting to second- line ART regimen s				Sustainable when (n)PoC test costs are lowered

301 nPoC describes near point of care

302 PoC VL describes point of care viral load

303 HC describes health Centre

304

DH describes district hospital

RH describes referral hospital

ART describes Antiretroviral Therapy

305

## 306 Overall results

307 We assessed the risk of bias with the Newcastle Ottawa Scale.(15) Fourteen studies had a low  
308 risk of bias (scored 7-9).(17,18,21–25,28–32,35,38) while ten studies had an unclear risk of bias  
309 (scored 4-6).(19,20,26,27,33,34,36,37,39,40) Only one study had a high risk of bias and scored  
310 3; this was the prospective feasibility study conducted in Zimbabwe that highlighted potential  
311 bottlenecks.(41).The Newcastle Ottawa Scale completed in detail is available in the S4 Table.

312 Each study described at least one of the eight IROs defined by Proctor et al.(13)

313

## 314 Acceptability

315 Ten studies described the acceptability of (n)PoC VL monitoring.(18–21,25,29,33,35,38,40)

316 A study in Malawi, Uganda and South Africa (SA) on SAMBA I HIV, reported high satisfaction  
317 with (n)PoC VL monitoring, reduced turnaround times from blood draw to results and at the  
318 same time minimizing clinic visits for high-risk patients.(38,40) Further, in the STREAM study  
319 in SA, a retrospective cohort study on SAMBA 1 VL in Malawi, and a qualitative study in  
320 Southwestern Uganda, PoC or (n)PoC VL monitoring was highly acceptable to patients as it  
321 improves HIV care and ART adherence monitoring.(18–20)

322 In addition, studies conducted in Ghana and Haiti using GeneXpert showed that (n)PoC VL  
323 monitoring was highly acceptable to patients with the added benefit of results on the same day,  
324 reduced drug resistance and immediate counselling.(21,25) Likewise, a qualitative study in SA  
325 and Zambia showed that (n)PoC or PoC VL monitoring was highly acceptable by health  
326 providers as it helps patients to accept their illness and adhere to medication.(29,33) However,  
327 low acceptability of (n)PoC VL monitoring was observed in the SA studies as nonlaboratory  
328 healthcare workers conducted (n)PoC tests.(29,35)

329

## 330 Adoption

331 Four studies described the adoption of (n)PoC VL monitoring.(20,29,30,41)

332 Medical professionals and patients observed a high uptake of (n)PoC VL monitoring in studies  
333 conducted in SA, Kenya and Zimbabwe for its immediate provision of results and counselling to  
334 patients, including multi-disease testing, which increases system efficiency.(29,30,41) However,

335 in a qualitative study conducted in Southwestern Uganda, health staff observed low adoption of  
336 (n)PoC VL monitoring, coupled with limited knowledge regarding interpreting the results.(20)

337

### 338 [Appropriateness](#)

339 Appropriateness was touched upon in four studies.(30,32,40,41)

340 A retrospective study in seven Sub-Saharan countries and the STREAM study in SA showed  
341 high appropriateness of (n)PoC VL monitoring as results were available at the near point of  
342 care.(32,40)

343 In addition, a quantitative study in Kenya and the prospective feasibility study conducted in  
344 Zimbabwe revealed that (n)PoC testing with GeneXpert was highly appropriate for multi-disease  
345 testing as it provides immediate results(30,41) On the contrary, the second qualitative study done  
346 in SA observed a low appropriateness of (n)PoC VL monitoring in public health facilities with  
347 large numbers of people.(40)

348

### 349 [Costs](#)

350 Costs were described in nine studies.(17,23,27–29,31,33,36,41)

351 An observational study of (n)PoC VL monitoring conducted in Kenya revealed high costs in  
352 low-testing volume clinics.(17) Researchers compared the (n)PoC costs with centralised testing,  
353 which were 54.93 USD per test and 25.65 USD per test respectively. The costs include personal  
354 time for a blood draw, clinical supplies, lab processing, training, lab equipment, electricity, rental  
355 space and cartridges. Furthermore, the feasibility study in Zimbabwe showed that (n)PoC VL  
356 monitoring had high costs due to failure to manage samples in some clinics.(41)

357 A cohort study in SA and Zambia and quantitative studies in Kenya observed low costs of PoC  
358 VL monitoring that included both the confirmation of treatment failure and the transition to  
359 second-line ART regimens.(27,28,31,36) Also, qualitative studies in SA and Zambia showed low  
360 costs of PoC tests, as it was performed on the same day and on the spot.(29,33) In addition, a  
361 mixed method study in SA showed low costs of (n)PoC VL monitoring in high testing volume  
362 clinics.(23)

363

### 364 Feasibility

365 Feasibility was described in ten studies.(17,18,20,24,26,29,34,37–39)

366 The SAMBA and feasibility studies in Malawi and Uganda using GeneXpert found that (n)PoC  
367 VL monitoring was more successful due to a reduction in time to results than centralised  
368 testing.(34,37,38)

369 Similarly, a prospective study on the implementation of PoC maternal VL and Early infant  
370 diagnosis conducted in SA and the feasibility study in Malawi and Zimbabwe showed that  
371 GeneXpert used as a multi-disease testing tool, was highly feasible to scale up HIV  
372 testing.(26,39) Furthermore, the STREAM and the qualitative studies in SA and Southwestern  
373 Uganda found high feasibility of (n)PoC VL monitoring, enabling rapid diagnosis, which, when  
374 coupled with sufficient staffing, contributes to the improvement of healthcare.(18,20,29)

375 Similarly, the quantitative study on developing and validating a simple and rapid way to generate  
376 a low volume of plasma used in PoC VL technology observed high feasibility in sites without  
377 laboratory Infrastructure.(24) However, low feasibility was observed in the Kenyan  
378 observational study in some settings that shared the same instrument, causing delays in VL  
379 results.(17)

380

### 381 Fidelity

382 Fidelity was described in three studies. (20,26,35)

383 The qualitative study in Southwestern Uganda and the feasibility study in Malawi and Zimbabwe  
384 revealed that (n)PoC VL monitoring was not implemented accurately. This was due to clients'  
385 distrust in the accuracy of the tests and insufficient training for HCWs.(20,26) Also, the  
386 qualitative study in SA showed a low fidelity of (n)PoC VL monitoring as HCWs were not aware  
387 or familiar with the guidelines.(35)

388

### 389 Penetration

390 Three studies reported penetration.(29,38,39)

391 The qualitative, prospective studies in SA reported high penetration of PoC or (n)PoC services  
392 when nurses are supported in managing stable patients through guidelines.(29,39) On the  
393 contrary, a qualitative study in SA and the SAMBA study in Malawi and Uganda observed low

394 penetration of the (n)PoC VL monitoring programme due to insufficient manpower and a high  
395 workload.(29,38)

396

### 397 **Sustainability**

398 Sustainability was described in six studies.(20,22,32,35,36,38)

399 A retrospective study in Sub-Saharan African countries, STREAM and cost-effective studies in  
400 SA observed high sustainability of PoC or (n)PoC VL monitoring, by having clear diagnostic  
401 pathways in healthcare settings, ensuring increased utilisation and adequate patient care,  
402 especially when lowering PoC test costs.(22,32,36)

403 On the other hand, the qualitative studies in Southwestern Uganda and SA and SAMBA studies  
404 in Malawi and Uganda observed low sustainability of (n)PoC VL monitoring in clinics, which is  
405 attributed to poor documentation of results, staff availability challenges and power  
406 supply.(20,35,38)

407

408

## 409 **Discussion**

410 This review has accumulated valuable insights into how PoC VL monitoring was implemented in  
411 various settings in LMICs and how specific implementation bottlenecks may limit proper  
412 implementation. Out of the twenty-five studies, fifteen studies specifically used GeneXpert for  
413 (n)PoC VL monitoring, six studies employed both GeneXpert and mPIMA, two studies used  
414 SAMBA 1 VL and only two studies focused on mPIMA PoC VL monitoring.

415 The implementation outcomes of (n)PoC VL monitoring have been widely positive in most of  
416 the studies, with reported high satisfaction among patients and HCWs. The benefits reported  
417 include reduced turnaround time, minimised clinic visits for high-risk patients, improved HIV  
418 care and increased adherence monitoring to antiretroviral therapy (ART), which significantly  
419 contribute to the acceptance and uptake of (n)PoC VL monitoring.

420 The short turnaround time of (n)PoC VL monitoring, providing same-day results was a key  
421 factor in its high acceptability. This led to early detection of treatment failure, minimised clinic  
422 visits, improved patient outcomes and minimised drug resistance. This was observed in a study  
423 conducted by Msimango et al., that (n)PoC VL monitoring was preferred and satisfactory over  
424 central laboratory testing as it reduced the frequency of clinic visits. (41)

425 This review shows that (n)PoC VL monitoring has improved the quality of HIV care from the  
426 patient's perspective. Additionally, a study by Nicholas et al., with SAMBA 1 VL test, showed  
427 that the same-day VL load test results improved HIV care and reduced follow-up loss.(19)  
428 Moreover, PoC or (n)PoC VL monitoring has shown to lead to increased adherence monitoring  
429 to ART. This was evident from a study in South Africa by Drain et al., in which patients  
430 highlighted the advantages of MPIMA PoC or GeneXpert (n)PoC VL monitoring and that it  
431 enhances the monitoring of adherence to Antiretroviral Treatment (ART).(18)  
432 However, the adoption of PoC VL monitoring in various studies has been hindered by several  
433 implementation bottlenecks. Challenges include issues related to non-laboratory HCWs not  
434 knowing how to interpret the results well, making it difficult to integrate (n)PoC VL monitoring  
435 into healthcare practices. This was also noted in a study by Wang et al., where HCWs lacked  
436 training to implement (n)PoC VL monitoring tests effectively.(26)  
437 Challenges also arose in terms of appropriateness in public health facilities, with large patient  
438 volumes leading to delays in clinic flow. According to a study by Msimango et al., challenges  
439 arose for the client, as (n)PoC tests may cause delays in clinic flow due to a high number of  
440 people in the facility.(40)  
441 Costs emerged as a barrier, particularly in low-volume clinics due to the high costs of (n)PoC VL  
442 monitoring. The study by Simeon et al., noted that (n)PoC VL monitoring reduced its costs in  
443 low-volume clinics when used for other disease testing as well. (23)  
444 However, the complexity of multi-disease testing was identified as a challenge too in the review  
445 studies. This was also reported by Bulterys et al., indicating that clinics with multi-disease  
446 testing for (n)PoC VL monitoring using GeneXpert are accompanied by several challenges,  
447 including multiple patient queues causing delays in results and extended clinic visits.(17)  
448 Implementation of (n)PoC VL monitoring challenges including test accuracy, were identified.  
449 Research by Rasti et al., found that patients were concerned about the diagnostic accuracy of  
450 (n)PoC VL monitoring.(20)  
451 Insufficient manpower and high workloads were recognised as obstacles. Engel et al. reported  
452 that nurses perceived (n)PoC implementation as an extra workload, leading to patients' delays in  
453 waiting for the results.(29)



454 To overcome these implementation bottlenecks, clear diagnostic pathways and proper  
455 documentation of results were identified as essential measures to ensure the successful  
456 implementation of PoC or (n)PoC VL monitoring.

457 Also, studies showed that (n)PoC VL monitoring was acceptable and well adopted by patients  
458 and HCWs due to multi-disease testing and delivery of same-day results.(21,30) On the other  
459 hand, PoC VL monitoring was shown to be cost-effective, appropriate and feasible when  
460 conducted at the point of care.(24,32,33)

461 This review has several limitations. The author considered only peer-reviewed published articles,  
462 did not include unpublished reviews and the period for the included studies was restricted.  
463 Studies published between 2013-2024 and limited databases were covered. The lack of data from  
464 geographic regions outside of low- and middle-income countries raises a concern about bias and  
465 the generalizability of the findings.

466 The strength of this review is that we used the Proctor framework, which gives a comprehensive  
467 overview of implementation research outcomes. Gaps could suggest further research that can  
468 provide better insights into using PoC or (n)PoC VL monitoring in healthcare settings, human  
469 resources, continuous staff training and sustainable supply chain of PoC or (n)PoC facilities.

470

### 471 **Recommendations**

472 Point of Care VL monitoring provides rapid results followed by adherence counselling compared  
473 to nPoC VL monitoring. Rapid results provided by PoC VL monitoring improved its  
474 acceptability, leading to early detection of treatment failure, minimized clinic visits and  
475 improved patient outcomes. To address the implementation challenges of (n)PoC VL monitoring,  
476 prioritisation of clear diagnostic pathways and proper documentation are needed, as identified in  
477 this review. Further research should address gaps in healthcare settings, human resources, staff  
478 training and the sustainable supply chain for facilities that use (n)PoC tests.

479

### 480 **Conclusion**

481 Implementing PoC or (n)PoC testing for HIV VL monitoring was acceptable, feasible and can  
482 reach a broad population. However, high costs, limited fidelity, and lack of penetration and  
483 sustainability may hinder the use of the (n)PoC test in improving patient care and health

484 outcomes. Our findings indicate different implementation bottlenecks, such as non-laboratory  
485 HCWs not knowing how to interpret results and clinic delays due to high patient volumes.  
486 Additional challenges include increased costs due to low attendance, complex multi-disease  
487 testing and test accuracy concerns. Insufficient manpower and high workloads also affect  
488 implementation.

489 Point of care knowledge and training are needed to address problems related to implementation  
490 outcomes. This enables researchers, public health communities and policymakers to collaborate  
491 effectively in developing and testing evidence-based interventions.

492

493

494

### 495 **Acknowledgements**

496 The authors thank the members of the EAPOC-VL study. The study is a collaboration between  
497 Uganda National Health Research Organisation/Uganda Virus Research Institute  
498 (UNHRO/UVRI, Uganda), Karolinska Institute (Sweden), The Good Samaritan Foundation  
499 Kilimanjaro Christian Medical Centre (GSF KCMC, Tanzania), Stichting Amsterdam Institute  
500 for Global Health and Development (AIGHD, the Netherlands), London School of Hygiene and  
501 Tropical Medicine (MRC/UVRI & LSHTM Uganda Research Unit, Uganda), National Institute  
502 for Medical Research (NIMR, Tanzania), Kenya Medical Research Institute (KEMRI), Center  
503 for Global Health Research (CGHR), and the University of Rwanda (UR, Rwanda).

504

505

506

507

508

509

510

511

512

513

514

## 515 References

- 516 1. Joint United Nations Programme on HIV/AIDS (UNAIDS) 2024. Fact sheet 2024 - Latest global and  
517 regional HIV statistics on the status of the AIDS epidemic. 2024; Available from:  
518 <https://www.unaids.org/en>
- 519 2. Lebelonyane R, Bachanas P, Block L, Ussery F, Alwano MG, Marukutira T, et al. To achieve 95-95-  
520 95 targets we must reach men and youth: High level of knowledge of HIV status, ART coverage,  
521 and viral suppression in the Botswana Combination Prevention Project through universal test and  
522 treat approach. *PLoS One*. 2021 Aug 1;16(8 August).
- 523 3. Carmona S, Peter T, Berrie L. HIV viral load scale-up: Multiple interventions to meet the HIV  
524 treatment cascade. Vol. 12, *Current Opinion in HIV and AIDS*. Lippincott Williams and Wilkins;  
525 2017. p. 157–64.
- 526 4. Bulage L, Ssewanyana I, Nankabirwa V, Nsubuga F, Kihembo C, Pande G, et al. Factors Associated  
527 with Virological Non-suppression among HIV-Positive Patients on Antiretroviral Therapy in  
528 Uganda, August 2014-July 2015. *BMC Infect Dis*. 2017 May 3;17(1).
- 529 5. Considerations for adoption and use of multidisease testing devices in integrated laboratory  
530 networks: information note. CCBY-NC-SA 3.0 IGO licence [Internet]. 2017;(June). Available from:  
531 <https://iris.who.int/handle/10665/255693>
- 532 6. Meeting Report. MOLECULAR DIAGNOSTICS INTEGRATION GLOBAL MEETING REPORT. *African*  
533 *Soc Lab Med* [Internet]. 2019;(10-12 JULY). Available from: <http://apps.who.int/iris>
- 534 7. Vojnov L, Taegtmeyer M, Boeke C, Markby J, Harris L, Doherty M, et al. Performance of non-  
535 laboratory staff for diagnostic testing and specimen collection in HIV programs: A systematic  
536 review and meta-analysis. Vol. 14, *PLoS ONE*. Public Library of Science; 2019.
- 537 8. Tun NN, Smithuis F, Tun NL, Min M, Hlaing MMM, van Olmen J, et al. Near point-of-care HIV viral  
538 load testing: Cascade after high viral load in suburban Yangon, Myanmar. *PLoS One*. 2023 Apr  
539 1;18(4 April).
- 540 9. Drain PK, Dorward J, Bender A, Lillis L, Marinucci F, Sacks J, et al. Point-of-Care HIV Viral Load  
541 Testing: an Essential Tool for a Sustainable Global HIV/AIDS Response [Internet]. 2019. Available  
542 from: <https://journals.asm.org/journal/cmr>
- 543 10. Meggi B, Bollinger T, Zitha A, Mudenyanga C, Vubil A, Mutsaka D, et al. Performance of a True  
544 Point-of-Care Assay for HIV-1/2 Viral Load Measurement at Antenatal and Postpartum Services  
545 [Internet]. *IMPLEMENTATION SCIENCE*. 2021. Available from: [www.jaids.com](http://www.jaids.com)
- 546 11. Ritchie A V., Ushiro-Lumb I, Edemaga D, Joshi HA, De Ruyter A, Szumilin E, et al. SAMBA HIV  
547 semiquantitative test, a new point-of-care viral-load-monitoring assay for resource-limited  
548 settings. *J Clin Microbiol*. 2014;52(9):3377–83.
- 549 12. Agutu CA, Ngetsa CJ, Price MA, Rinke de Wit TF, Omosa-Manyonyi G, Sanders EJ, et al. Systematic  
550 review of the performance and clinical utility of point of care HIV-1 RNA testing for diagnosis and  
551 care. *PLoS One*. 2018 Nov 1;14(6).
- 552 13. Proctor E, Silmere H, Raghavan R, Hovmand P, Aarons G, Bungler A, et al. Outcomes for

- 553 implementation research: Conceptual distinctions, measurement challenges, and research  
554 agenda. *Adm Policy Ment Heal Ment Heal Serv Res*. 2011 Mar;38(2):65–76.
- 555 14. Shamseer L, Moher D, Clarke M, Ghera D, Liberati A, Petticrew M, et al. Preferred reporting  
556 items for systematic review and meta-analysis protocols (prisma-p) 2015: Elaboration and  
557 explanation. Vol. 349, *BMJ (Online)*. BMJ Publishing Group; 2015.
- 558 15. Wells G, Shea B, Robertson J, Peterson J, Welch V, Losos M, et al. The Newcastle-Ottawa Scale  
559 (NOS) for Assessing the Quality of Nonrandomized Studies in Meta-Analysis.
- 560 16. Page MJ, Moher D, Bossuyt PM, Boutron I, Hoffmann TC, Mulrow CD, et al. PRISMA 2020  
561 explanation and elaboration: Updated guidance and exemplars for reporting systematic reviews.  
562 Vol. 372, *The BMJ*. BMJ Publishing Group; 2021.
- 563 17. Bulterys MA, Oyaro P, Brown E, Yongo N, Karauki E, Wagude J, et al. Costs of point-of-care viral  
564 load testing for adults and children living with hiv in kenya. *Diagnostics*. 2021 Jan 1;11(1).
- 565 18. Drain PK, Dorward J, Violette LR, Quame-Amaglo J, Thomas KK, Samsunder N, et al. Point-of-care  
566 HIV viral load testing combined with task shifting to improve treatment outcomes (STREAM):  
567 findings from an open-label, non-inferiority, randomised controlled trial. *Lancet HIV*. 2020 Apr  
568 1;7(4):e229–37.
- 569 19. Nicholas S, Poulet E, Wolters L, Wapling J, Rakesh A, Amoros I, et al. Point-of-care viral load  
570 monitoring: outcomes from a decentralized HIV programme in Malawi. *J Int AIDS Soc*.  
571 2019;22(8):1–9.
- 572 20. Rasti R, Nanjebe D, Karlström J, Muchunguzi C, Mwanga-Amumpaire J, Gantelius J, et al. Health  
573 care workers' perceptions of point-of-care testing in a low-income country - A qualitative study in  
574 Southwestern Uganda. *PLoS One*. 2017 Jul 1;12(7).
- 575 21. Reif LK, Belizaire ME, Rouzier V, Seo G, Severe P, Bajo Joseph JM, et al. Point-of-care viral load  
576 testing among adolescents and young adults living with HIV in Haiti: a randomized control trial.  
577 *AIDS Care - Psychol Socio-Medical Asp AIDS/HIV*. 2022;34(4):409–20.
- 578 22. Sharma M, Mudimu E, Simeon K, Bershteyn A, Dorward J, Violette LR, et al. Cost-effectiveness of  
579 point-of-care testing with task-shifting for HIV care in South Africa: a modelling study. *Lancet HIV*.  
580 2021 Apr 1;8(4):e216–24.
- 581 23. Simeon K, Sharma M, Dorward J, Naidoo J, Dlamini N, Moodley P, et al. Comparative cost analysis  
582 of point-of-care versus laboratory-based testing to initiate and monitor HIV treatment in South  
583 Africa. *PLoS One*. 2019 Oct 1;14(10).
- 584 24. Vasconcellos I, Mariani D, Azevedo MCVM d., Ferreira OC, Tanuri A. Development and validation  
585 of a simple and rapid way to generate low volume of plasma to be used in point-of-care HIV virus  
586 load technologies. *Brazilian J Infect Dis*. 2020 Jan 1;24(1):30–3.
- 587 25. Villa G, Abdullahi A, Owusu D, Smith C, Azumah M, Sayeed L, et al. Determining virological  
588 suppression and resuppression by point-of-care viral load testing in a HIV care setting in sub-  
589 Saharan Africa. *EclinicalMedicine*. 2020 Jan 1;18.
- 590 26. Wang M, Boeke CE, Rioja MR, Maparo T, Banda C, Chavula C, et al. Feasibility and impact of near-  
591 point-of-care integrated tuberculosis/HIV testing in Malawi and Zimbabwe. *AIDS*. 2021 Dec  
592 1;35(15):2531–7.

- 593 27. Broucker G De, Salvatore PP, Mutembo S, Moyo N, Mutanga JN, Thuma PE, et al. The cost-  
594 effectiveness of scaling-up rapid point-of-care testing for early infant diagnosis of HIV in southern  
595 Zambia. *PLoS One*. 2021 Mar 1;16(3 March).
- 596 28. de Necker M, de Beer JC, Stander MP, Connell CD, Mwai D. Economic and public health impact of  
597 decentralized HIV viral load testing: A modelling study in Kenya. *PLoS One*. 2019 Feb 1;14(2).
- 598 29. Engel N, Davids M, Blankvoort N, Pai NP, Dheda K, Pai M. Compounding diagnostic delays: A  
599 qualitative study of point-of-care testing in South Africa. *Trop Med Int Heal*. 2015 Apr  
600 1;20(4):493–500.
- 601 30. Girdwood SJ, Nichols BE, Moyo C, Crompton T, Chimhamhiwa D, Rosen S. Optimizing viral load  
602 testing access for the last mile: Geospatial cost model for point of care instrument placement.  
603 *PLoS One*. 2019 Aug 1;14(8).
- 604 31. Girdwood SJ, Crompton T, Sharma M, Dorward J, Garrett N, Drain PK, et al. Cost-effectiveness of  
605 adoption strategies for point of care HIV viral load monitoring in South Africa. *EClinicalMedicine*.  
606 2020 Nov 1;28.
- 607 32. Boeke CE, Joseph J, Atem C, Banda C, Coulibaly KD, Doi N, et al. Evaluation of near point-of-care  
608 viral load implementation in public health facilities across seven countries in sub-Saharan Africa.  
609 2021; Available from: <http://onlinelibrary.wiley.com/doi/10.1002/jia2.25663/full>
- 610 33. Tembo T, Dale H, Muttu N, Itoh M, Williamson D, Mwamba C, et al. “Testing Can Be Done  
611 Anywhere”: A Qualitative Assessment of Targeted Community-Based Point-of-Care Early Infant  
612 Diagnosis of HIV in Lusaka, Zambia [Internet]. 2022. Available from: [www.ghspjournal.org](http://www.ghspjournal.org)
- 613 34. Boyce RM, Ndizeye R, Ngelese H, Baguma E, Shem B, Rubinstein RJ, et al. It takes more than a  
614 machine: A pilot feasibility study of point-of-care HIV-1 viral load testing at a lower-level health  
615 center in rural western Uganda. *PLOS Glob Public Heal*. 2023 Mar 1;3(3).
- 616 35. Engel N, Davids M, Blankvoort N, Dheda K, Pant Pai N, Pai M. Making HIV testing work at the  
617 point of care in South Africa: A qualitative study of diagnostic practices. *BMC Health Serv Res*.  
618 2017;17(1).
- 619 36. Estill J, Egger M, Blaser N, Vizcaya LS, Garone D, Wood R, et al. Cost-effectiveness of point-of-care  
620 viral load monitoring of antiretroviral therapy in resource-limited settings: Mathematical  
621 modelling study. *AIDS*. 2013 Jun 1;27(9):1483–92.
- 622 37. Ganesh P, Heller T, Chione B, Gumulira J, Gugsu S, Khan S, et al. Near Point-of-Care HIV Viral  
623 Load: Targeted Testing at Large Facilities [Internet]. 2020. Available from: [www.jaids.com](http://www.jaids.com)
- 624 38. Gueguen M, Nicholas S, Poulet E, Schramm B, Szumilin E, Wolters L, et al. Implementation and  
625 operational feasibility of SAMBA | HIV-1 semi-quantitative viral load testing at the point-of-care in  
626 rural settings in Malawi and Uganda. *Trop Med Int Heal*. 2021 Feb 1;26(2):184–94.
- 627 39. Kufa T, Mazanderani AH, Sherman GG, Elie Mukendi A, Murray T, Moyo F, et al. Point-of-care HIV  
628 maternal viral load and early infant diagnosis testing around time of delivery at tertiary obstetric  
629 units in South Africa: a prospective study of coverage, results return and turn-around times. *J Int  
630 AIDS Soc* 2020, 23e25487 [Internet]. 2020; Available from:  
631 <http://onlinelibrary.wiley.com/doi/10.1002/jia2.25487/full>
- 632 40. Msimango L, Gibbs A, Shoji H, Ngobese H, Humphries H, Drain PK, et al. Acceptability of point-of-

633 care viral load testing to facilitate differentiated care: a qualitative assessment of people living  
634 with HIV and nurses in South Africa. BMC Health Serv Res. 2020 Dec 1;20(1).

635 41. Ndlovu Z, Fajardo E, Mbofana E, Maparo T, Garone D, Metcalf C, et al. Multidisease testing for  
636 HIV and TB using the GeneXpert platform: A feasibility study in rural Zimbabwe. PLoS One. 2018  
637 Mar 1;13(3).

638

639

## 640 **Supporting information**

641 S1 Figure PRISMA Diagram

642 S1 Table Search Strategy

643 S2 Table PRISMA checklists

644 S3 Table Reasons for exclusions

645 S4 Table Newcastle Ottawa Scale

646

647

648

649

## 650 **Authors' contributions**

651 PM performed the literature search, screening, data extraction and analysis and constructed the  
652 manuscript. MS performed the literature search, screening, data extraction and data analysis,  
653 review of articles, corrected the manuscript, IS reviewed the study results and final draft, KN  
654 reviewed the introduction and final draft. RR reviewed and corrected the manuscript. AL  
655 performed the literature search, screening, data extraction and data analysis. AH corrected the  
656 final manuscript. BM reviewed and corrected the final draft.

medRxiv preprint doi: <https://doi.org/10.1101/2024.11.04.24316630>; this version posted November 5, 2024. The copyright holder for this preprint (which was not certified by peer review) is the author/funder, who has granted medRxiv a license to display the preprint in perpetuity. It is made available under a [CC-BY 4.0 International license](#) .

medRxiv preprint doi: <https://doi.org/10.1101/2024.11.04.24316630>; this version posted November 5, 2024. The copyright holder for this preprint (which was not certified by peer review) is the author/funder, who has granted medRxiv a license to display the preprint in perpetuity. It is made available under a [CC-BY 4.0 International license](#) .



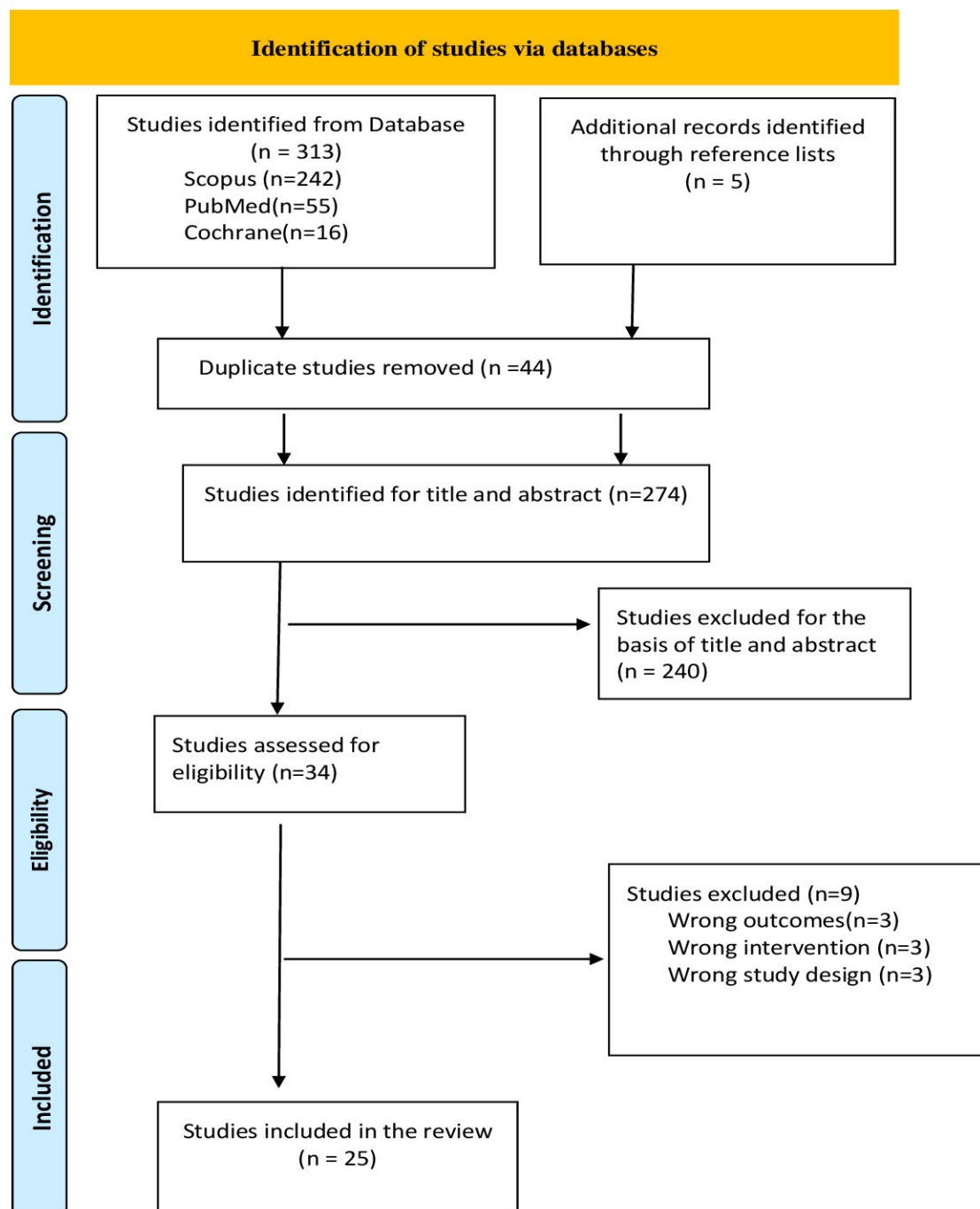


Figure 1: PRISMA diagram of studies screening and selection