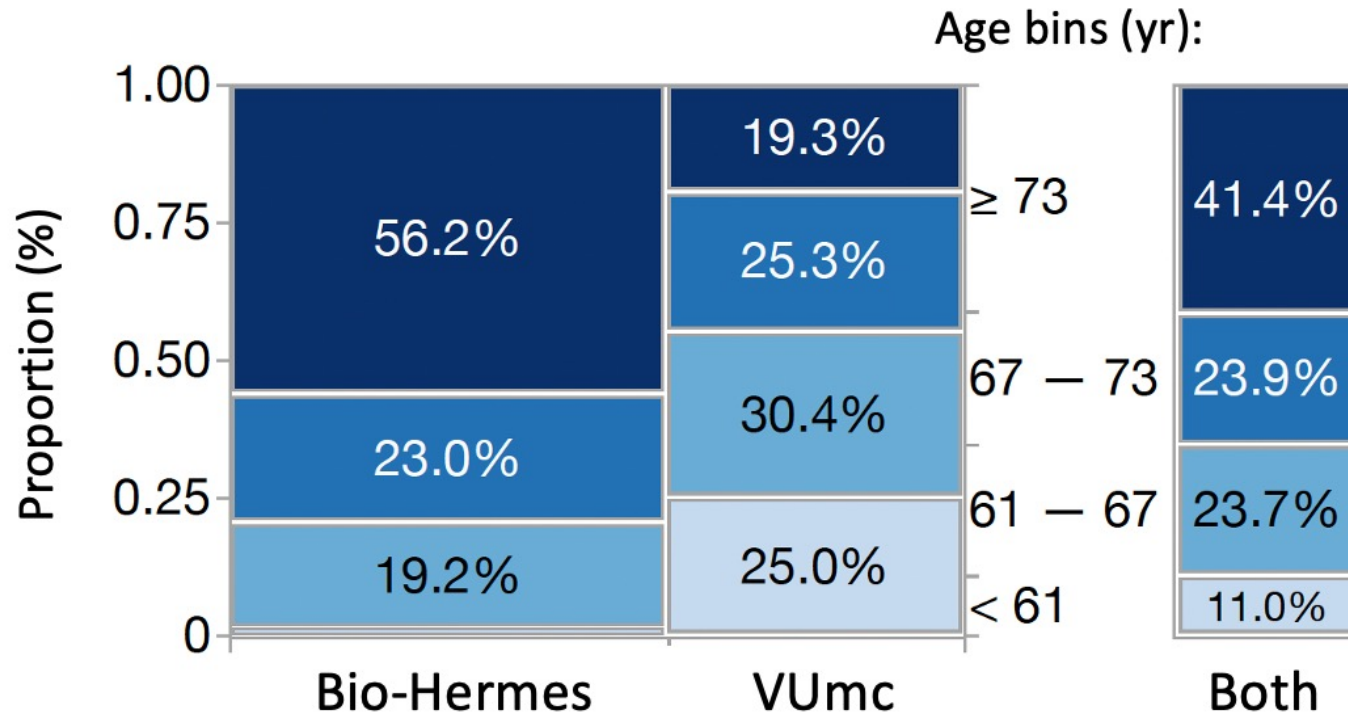
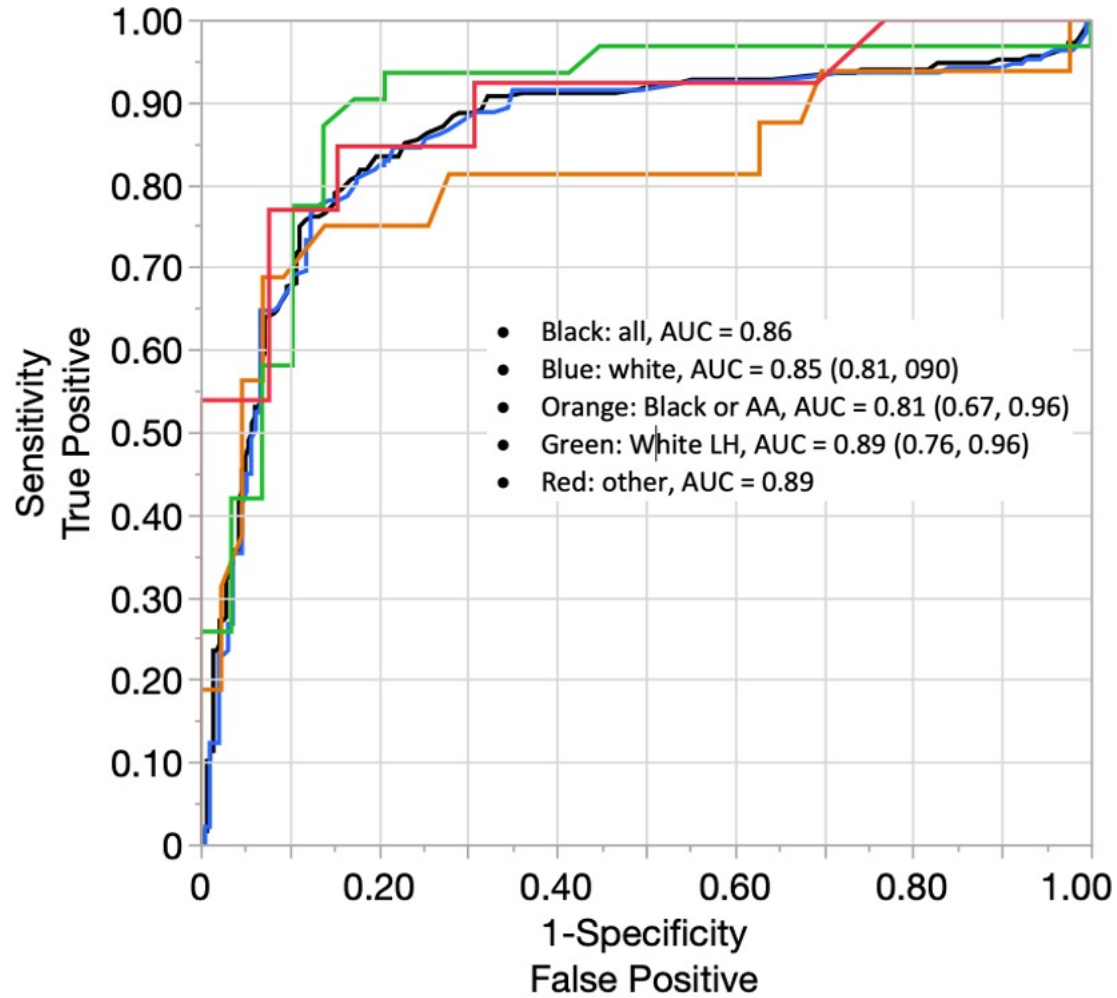


**Figure S1: Age Distributions of Bio-Hermes and Amsterdam Cohort**



**Figure S1:** Proportion of participant ages by bins across the two cohorts.

**Figure S2: ROC Curves Across Racial/Ethnic Groups**  
Bio-Hermes symptomatic groups cohort only



**Figure S2:** ROC curves as predictors of amyloid status (with 95% CI's)

**Table S1:  
Demographic characteristics  
by cohort**

	BH N = 521	VUMC N = 352	All N =873
<b>Age</b>			
Mean (sd)	73.2 (6.6)	65.4 (7.7)	70.1 (8.0)
Range	59 – 85	43 – 83	43 - 85
<b>Sex</b>			
Female	277 (53.2%)	162 (46.0%)	439 (50.3%)
<b>Race</b>			
American Indian or Alaska Native	1 (0.2%)	0 (0.0%)	1 (0.1%)
Asian	10 (1.9%)	0 (0.0%)	10 (1.5%)
Black or African American	60 (11.5%)	0 (0.0%)	60 (8.9%)
Native Hawaiian or other Pacific Islander	1 (0.2%)	0 (0.0%)	1 (0.1%)
Other/Unknown	5 (1.0%)	14 (9.0%)	19 (2.8%)
White	444 (85.2%)	142 (91.0%)	586 (86.6%)
Missing†	0	196	196
†Not included in %s			
<b>Ethnicity</b>			
Hispanic or Latino	68 (13.1%)	0 (0.0%)	68 (7.8%)
Not Hispanic or Latino	446 (85.6%)	0 (0.0%)	446 (51.1%)
Not Reported	7 (1.34%)	0 (0.0%)	7 (0.8%)
Unknown	0 (0.0%)	352	352 (40.3%)
<b>Diagnosis</b>			
AD	0 (0.0%)	123 (34.9%)	123 (14.1%)
Probable AD	235 (45.1%)	0 (0.0%)	235 (26.9%)
MCI	286 (54.9%)	229 (65.1%)	515 (59.0%)
<b>MMSE</b>			
Mean (sd)	24.1 (4.3)	26.2 (2.7)	25.0 (3.8)
Range	2 - 30	16 - 30	2 - 30
Missing data	2	2	4
<b>APOE e4 carrier/non carrier</b>			
E2E2	1 (0.2%)	1 (0.3%)	2 (0.2%)
E2E3	49 (9.4%)	15 (4.3%)	64 (7.3%)
E2E4	13 (2.5%)	4 (1.1%)	17 (1.9%)
E3E3	259 (49.7%)	119 (33.8%)	378 (43.3%)
E3E4	166 (31.9%)	132 (37.5%)	298 (34.1%)
E4E4	33 (6.3%)	65 (18.5%)	98 (11.2%)
Missing	0 (0.0%)	16 (4.5%)	16 (1.8%)
<b>Plasma p-tau217 Conc. (pg/mL)</b>			
Mean (sd)	0.09 (0.08)	0.10 (0.09)	0.09 (0.08)
<b>Amyloid Status</b>			
CSF	0 (0.0%)	337 (95.7%)	337 (38.6%)
PET	521 (100.0%)	15 (4.3%)	536 (61.4%)

**Table S1:** Amyloid classification based on amyloid PET or CSF biomarkers. Abbreviations: MCI = mild cognitive impairment; MMSE = Mini-Mental State Examination; PET = positron emission tomography.

**Table S2: Amyloid Prevalence by Diagnostic Category**

		AMYLOID					
		POSITIVE		NEGATIVE		All	
Source	Group Simple	N	Row %	N	Row %	N	Row %
BH	Probable AD	144	61.28%	91	38.72%	235	100.00%
	MCI	100	34.97%	186	65.03%	286	100.00%
	All	244	46.83%	277	53.17%	521	100.00%
VUMC	AD	122	99.19%	1	0.81%	123	100.00%
	MCI	129	56.33%	100	43.67%	229	100.00%
	All	251	71.31%	101	28.69%	352	100.00%
All	All	495	56.70%	378	43.30%	873	100.00%

**Table S3: PPV and NPV of Simoa p-Tau 217 assay by prevalence**

Population	Prevalence	PPV	NPV
Cognitively normal older adults	20.0%	72.2%	97.4%
Subjective cognitive decline	30.0%	81.6%	95.6%
Mild cognitive impairment	50.0%	91.2%	90.4%
Prevalence in this study	56.7%	93.1%	87.8%
Dementia population	65.0%	95.1%	83.5%

Typical prevalences for different populations, and the prevalence observed in the study reported here. Abbreviations: PPV, positive predictive value; NPV, negative predictive value.

**Table S4: Performance Metrics with 95% CI for Various Combinations of Data Sets**

Data Set	Measures	Est	LCI	UCI
BH Training	Prevalence	43.8%	35.3%	52.6%
	False Negative Rate	4.9%	0.3%	44.7%
	False Positive Rate	5.1%	0.4%	38.8%
	% in Indeterminant Range	37.4%	28.7%	46.9%
	Accuracy	92.0%	86.8%	95.3%
	Sensitivity	93.1%	85.4%	96.9%
AMST Training	Prevalence	91.0%	82.8%	95.5%
	False Negative Rate	78.8%	71.0%	84.9%
	False Positive Rate	5.4%	0.4%	41.9%
	% in Indeterminant Range	0.0%	.	.
	Accuracy - Ind	26.7%	15.9%	41.2%
	Accuracy - Ind	94.2%	88.3%	97.2%
Both Training	Sensitivity	92.4%	84.7%	96.4%
	Specificity	100.0%	88.3%	100.0%
	Prevalence	56.7%	50.6%	62.7%
	False Negative Rate	5.1%	0.7%	30.1%
	False Positive Rate	4.1%	0.3%	37.7%
	% in Indeterminant Range	33.4%	26.3%	41.3%
BH Validation	Accuracy - Ind	92.9%	89.3%	95.4%
	Sensitivity	92.7%	87.7%	95.8%
	Specificity	93.2%	86.9%	96.6%
	Prevalence	50.4%	41.6%	59.2%
	False Negative Rate	10.7%	2.4%	37.0%
	False Positive Rate	10.1%	2.1%	37.5%
AMST Validation	% in Indeterminant Range	30.0%	20.6%	41.4%
	Accuracy - Ind	85.1%	78.4%	90.0%
	Sensitivity	85.6%	76.0%	91.7%
	Specificity	84.6%	74.0%	91.4%
	Prevalence	64.7%	55.9%	72.6%
	False Negative Rate	7.4%	1.0%	39.4%
Both Validation	False Positive Rate	1.5%	0.0%	80.0%
	% in Indeterminant Range	26.2%	16.0%	39.9%
	Accuracy - Ind	92.8%	86.9%	96.1%
	Sensitivity	90.2%	81.9%	94.9%
	Specificity	97.8%	88.5%	99.6%
	Prevalence	56.7%	50.4%	62.8%
BH Training & Validation	False Negative Rate	9.1%	2.5%	27.8%
	False Positive Rate	7.0%	1.2%	32.5%
	% in Indeterminant Range	28.3%	21.1%	36.9%
	Accuracy - Ind	88.6%	84.2%	91.8%
	Sensitivity	87.9%	82.0%	92.1%
	Specificity	89.5%	82.4%	94.0%
AMST Training & Validation	Prevalence	46.8%	40.7%	53.1%
	False Negative Rate	7.8%	1.8%	28.0%
	False Positive Rate	7.2%	1.6%	26.6%
	% in Indeterminant Range	34.0%	27.4%	41.2%
	Accuracy - Ind	88.7%	84.6%	91.8%
	Sensitivity	89.3%	83.5%	93.2%
Both Training & Validation	Specificity	88.0%	81.8%	92.3%
	Prevalence	71.3%	65.4%	76.5%
	False Negative Rate	6.4%	1.2%	28.5%
	False Positive Rate	1.0%	0.0%	79.8%
	% in Indeterminant Range	26.4%	18.5%	36.2%
	Accuracy - Ind	93.4%	89.6%	95.9%
AMST Training & Validation	Sensitivity	91.3%	86.1%	94.7%
	Specificity	98.7%	92.8%	99.8%
	Prevalence	56.7%	52.3%	61.0%
	False Negative Rate	7.1%	2.2%	20.4%
	False Positive Rate	5.6%	1.1%	23.8%
	% in Indeterminant Range	30.9%	25.7%	36.7%
Both Training & Validation	Accuracy	90.7%	88.0%	92.9%
	Sensitivity	90.3%	86.6%	93.1%
	Specificity	91.3%	86.9%	94.4%
	Prevalence	56.7%	52.3%	61.0%
	False Negative Rate	7.1%	2.2%	20.4%
	False Positive Rate	5.6%	1.1%	23.8%

**Table S5: Tukey-Kramer Comparisons of Pairwise Differences in Mean p-Tau 217 Values Across Racial/Ethnic Groups**

**Amyloid Positives**

Level	- Level	Difference	Std Err Dif	Lower CL	Upper CL	p-Value	-0.02	0	0.02
White	Black or AA	0.0129517	0.0081627	-0.003118	0.0290210	0.1137			
Other, Unkn	Black or AA	0.0101020	0.0153279	-0.020073	0.0402769	0.5104			
White, LH	Black or AA	0.0071524	0.0116367	-0.015756	0.0300606	0.5393			
White	White, LH	0.0057993	0.0096416	-0.013181	0.0247800	0.5480			
Other, Unkn	White, LH	0.0029496	0.0161640	-0.028871	0.0347705	0.8553			
White	Other, Unkn	0.0028497	0.0138742	-0.024463	0.0301629	0.8374			

**Amyloid Negatives**

Level	- Level	Difference	Std Err Dif	Lower CL	Upper CL	p-Value	-0.02	0	0.02
White	Black or AA	0.0129517	0.0081627	-0.003118	0.0290210	0.1137			
Other, Unkn	Black or AA	0.0101020	0.0153279	-0.020073	0.0402769	0.5104			
White, LH	Black or AA	0.0071524	0.0116367	-0.015756	0.0300606	0.5393			
White	White, LH	0.0057993	0.0096416	-0.013181	0.0247800	0.5480			
Other, Unkn	White, LH	0.0029496	0.0161640	-0.028871	0.0347705	0.8553			
White	Other, Unkn	0.0028497	0.0138742	-0.024463	0.0301629	0.8374			