

Supplemental File

Title: Association between Accelerometer-Measured Irregular Sleep Duration and Longitudinal Changes in Body Mass Index in Older Adults

Contents

Supplemental Text: Primary care data cleaning and BMI change equations	2
Supplemental Figure 1. Study flow diagram	3
Supplemental Figure 2. Distribution of sleep duration standard deviation measured across 7-day accelerometer study	4
Supplemental Figure 3. Distribution of BMI change outcomes (standardized to three-year intervals)	5
Supplemental Figure 4. Variable assessment year.....	6
Supplemental Table 1. Participants baseline characteristics comparing those included and excluded	7
Supplemental Table 2. UK Biobank Data-Field numbers of variables used in this study.....	8
Supplemental Table 3. Participants baseline characteristics comparing those with and without updated baseline measurements	9
Supplemental Table 4. Distributions of continuous outcome variables and time difference variables, N = 10,572	10
Supplemental Table 5. Associations between irregular sleep duration and risk of a standardized BMI change of at least 4.43 kg/m ² standardized to three-year intervals, N = 10,572	11
REFERENCES	12

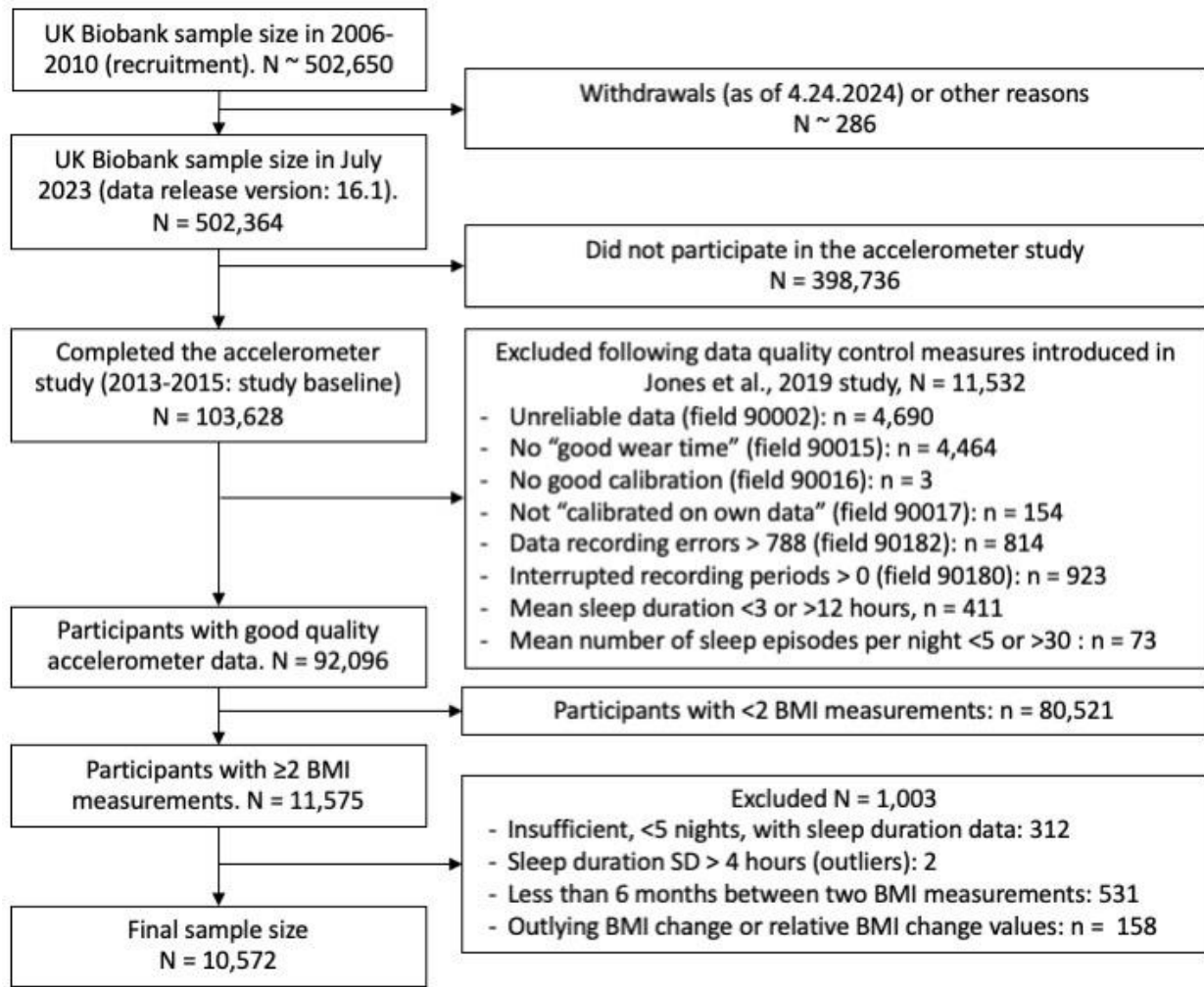
Supplemental Text: Primary care data cleaning and BMI change equations

In the primary care dataset, Read v2 and CTV3 codes, specifically '22A..' for weight measured during examination and '22K..' for BMI, were utilized to retrieve relevant measurements. Primary care data have been minimally cleaned. Following the distribution of weight and BMI measurements from the UK Biobank baseline visit, we excluded primary care weight values of less than 30 or more than 198 kg. Similarly, we excluded BMI measurements less than 12 or more than 75 kg/m². These cutoffs were selected based on the minimum and maximum values of corresponding measurements from baseline center visits in the UK Biobank cohort. Further, for participants with multiple primary care weight or BMI measurements, we conducted a manual review of participant data and identified and excluded certain cases with implausible entries (e.g., sudden jump/fall in the weight values, two measurements in the same day with largely different values). We retained up to two weight or two BMI measurements from the primary care data and assessment center datasets. The first measurement (baseline) retained was the one closest to accelerometer study date, subject to the condition that it occurred no earlier than one year before and no later than one year after the accelerometer study date. The follow-up measurement chosen was the one closest to three years after the baseline measurement, provided it occurred after the baseline measurement and at least six months after the accelerometer study date. Missing BMI values were calculated based on height and weight when available. Below are the equations used for defining BMI change outcomes.

$$\mathbf{Standardized\ BMI\ change} = \frac{\mathbf{Follow\ up\ BMI} - \mathbf{Baseline\ BMI}}{\mathbf{Time\ Difference\ in\ Days}} \times 1095\ \mathbf{Days}$$

$$\mathbf{Relative\ BMI\ change} = \frac{\mathbf{Standardized\ BMI\ Change}}{\mathbf{Baseline\ BMI}} \times 100$$

Supplemental Figure 1. Study flow diagram



Quality control measures are available in the UK Biobank dataset.

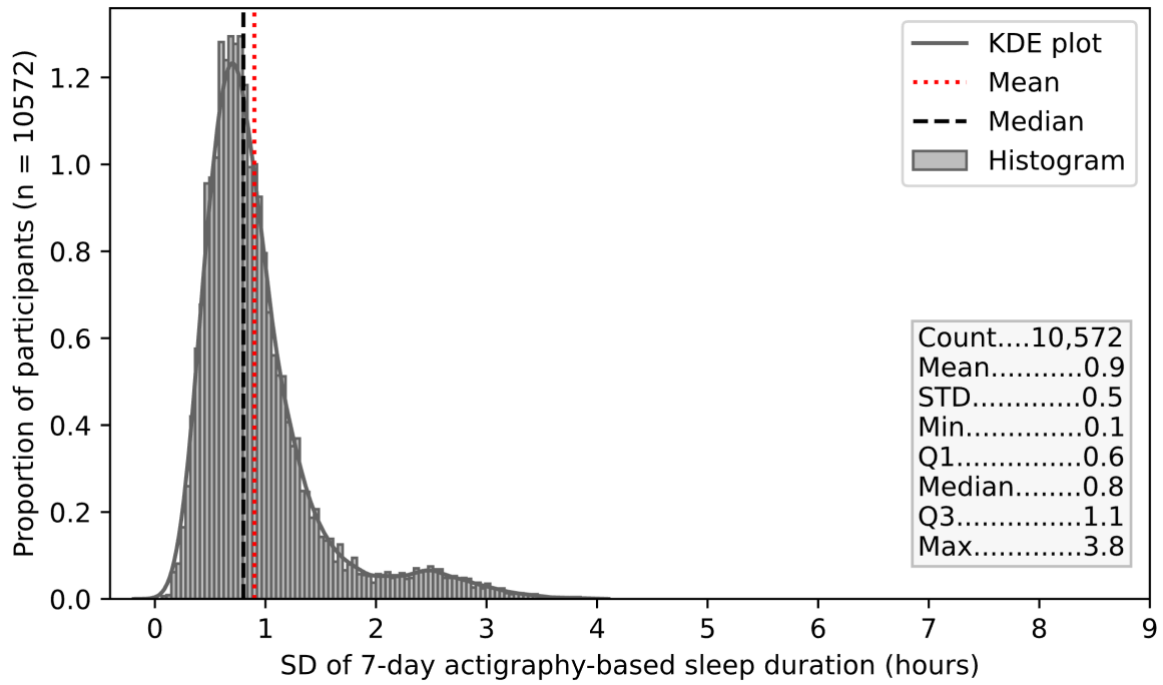
We used sleep measures derived from accelerometer data in the Jones 2019 paper. Insufficient nights with sleep duration data, defined as having fewer than five nights recorded, were identified using a variable derived by Jones et al. (2019) named 'n_nights_sleep'.

Participants with missing values for quality control measures were also excluded from analyses.

Reference to Jones 2019 paper: Jones SE, Lane JM, Wood AR, van Hees VT, Tyrrell J, Beaumont RN, et al. Genome-wide association analyses of chronotype in 697,828 individuals provides insights into circadian rhythms. *Nature communications*. 2019;10(1):343.

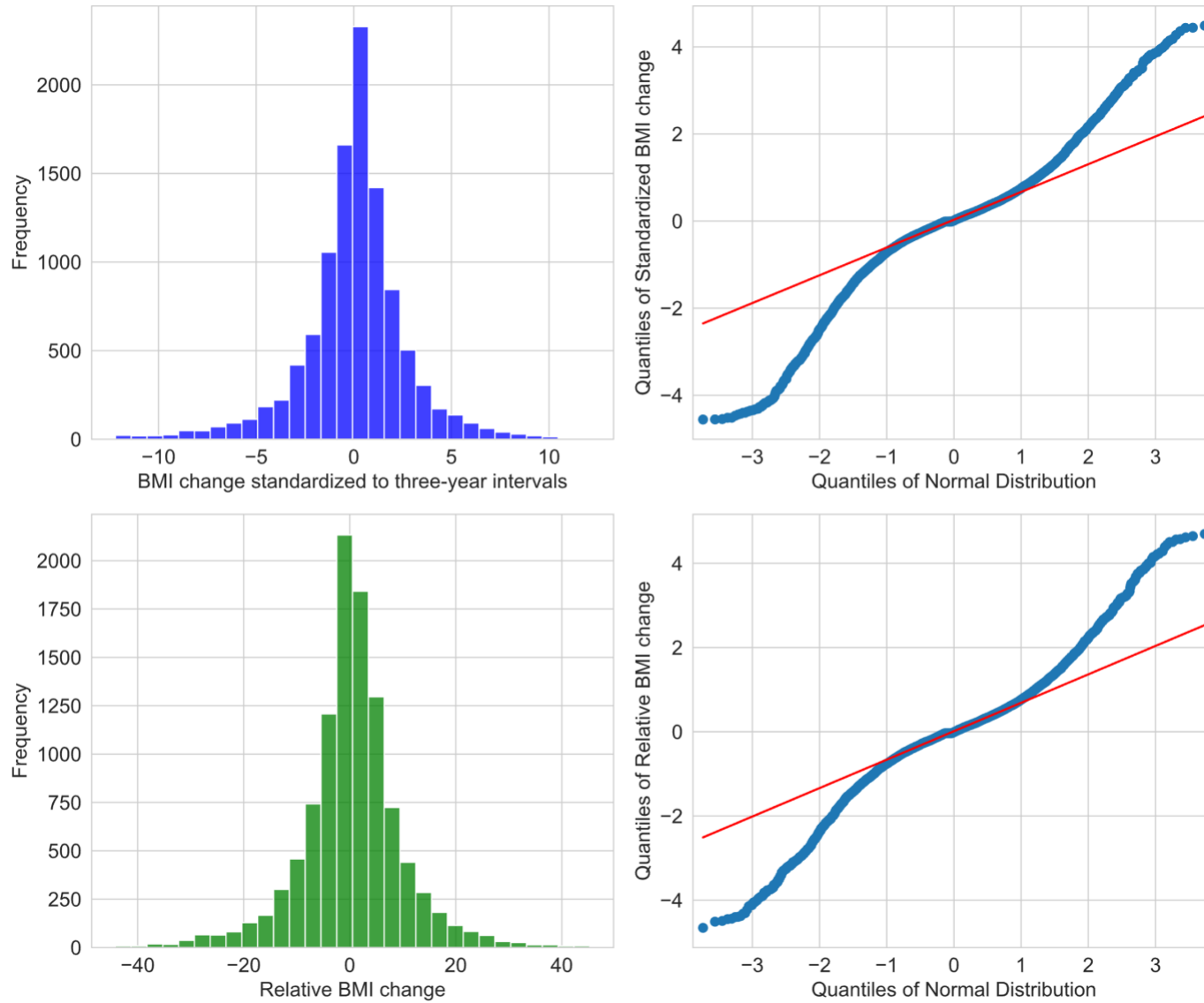
BMI: Body mass index

Supplemental Figure 2. Distribution of sleep duration standard deviation measured across 7-day accelerometer study

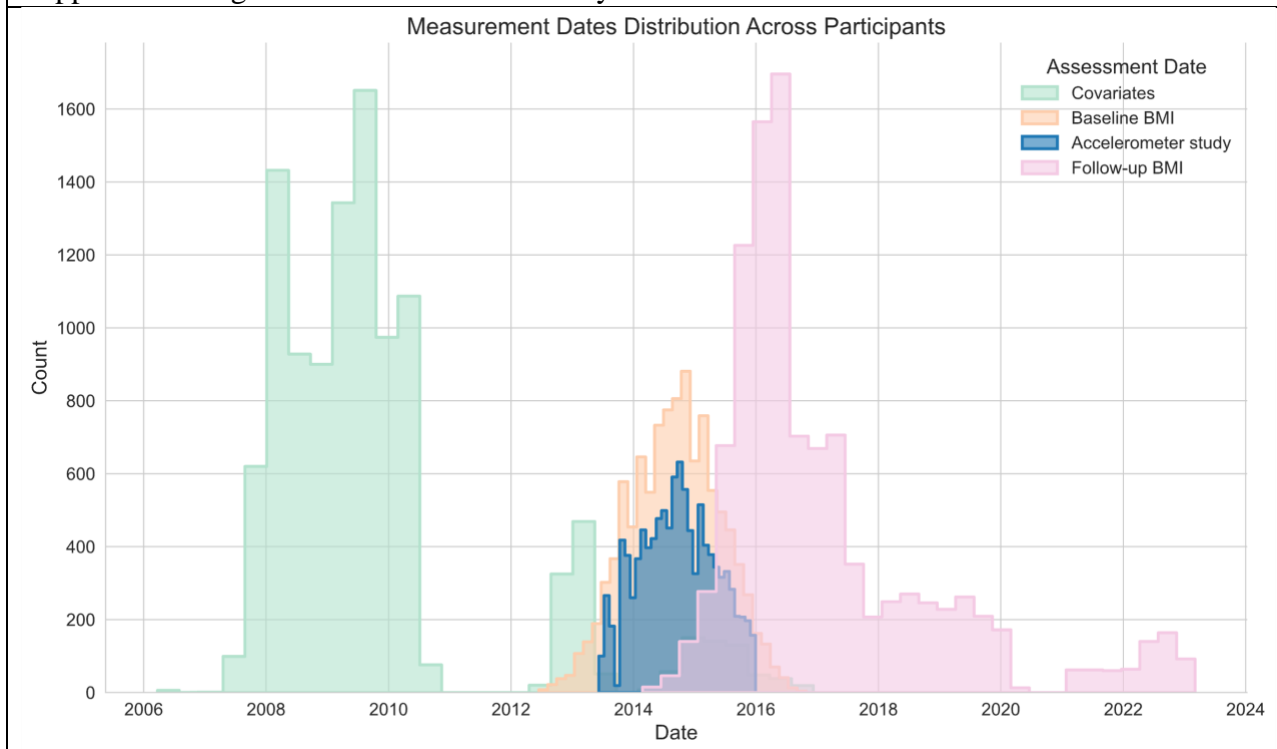


Participants with more than >4 hours of sleep duration standard deviation (outliers) were excluded from this data visualization.

Supplemental Figure 3. Distribution of BMI change outcomes (standardized to three-year intervals)



Supplemental Figure 4. Variable assessment year.



Histograms were plotted using `seaborn.histplot` with `bins=30`

For covariates (green plot), when available, we updated the measurements using data closer to the accelerometer study date, ensuring that these measurements occurred before or at most 365 days after the accelerometer study date.

Supplemental Table 1. Participants baseline characteristics comparing those included and excluded			
	UK Biobank Accelerometry study N = 103,628	Included N = 10,572	Excluded N = 93,056
Age (years), mean (SD)	62.3 (7.9)	63.4 (7.6)	62.1 (7.9)
Male %	43.8	47.5	43.4
Townsend deprivation index, mean (SD)	-1.7 (2.8)	-1.7 (2.8)	-1.7 (2.8)
College or University degree %	44.7	40.5	45.2
White %	96.8	97.1	96.7
Current Occupation/shift work %			
Employed, never/rarely shift work	49.9	43.5	50.7
Employed, sometimes/usually/always shift work	7.8	7.7	7.8
Retired/Other	42.3	48.8	41.6
Moderate-vigorous physical activity (min/day), mean (SD)	40.2 (35.9)	38.5 (34.1)	40.4 (36.1)
Objective sleep duration, mean (SD)	7.2 (1.0)	7.3 (0.9)	7.2 (1.1)
Weight recorded at assessment center visit, mean (SD)	76.7 (15.4)	79.5 (16.6)	76.4 (15.2)
BMI recorded at assessment center visit, mean (SD)	26.7 (4.5)	27.7 (5.0)	26.6 (4.5)
The table was constructed after missing values had been filled in for “Included” column. No single covariate had more than 2.7% missing values. Missing values were not filled for “UK Biobank accelerometry study” and “Excluded” columns.			

Supplemental Table 2. UK Biobank Data-Field numbers of variables used in this study		
Variable	Data-Field	Notes on variable definition
Body mass index	21001 , 42040 (Record Table 1060)	Read 2 and Read 3 codes “22A..” and “22K..” were used to obtain primary care BMI and weight measurements.
End time of accelerometer wear	90011	This date marks the baseline of the study, corresponding to when the exposure (i.e., sleep duration SD) was evaluated.
Date of attending assessment center	53	--
Age	34 , 52	--
Sex	31	--
Ethnic background	21000	--
Townsend deprivation index	22189	--
Education	6138	--
Occupation/shift work	826 , 6142	--
Smoking status	20116	--
Physical activity	40049	Following Bradbury et al., 2016 paper (1), values >6 hours per day were set to 6 hours.
Healthy diet score	1289 , 1299 , 1309 , 1319 , 1329 , 1339 , 1349 , 1359 , 1369 , 1379 , 1389	We followed instructions from Rutten-Jacobs et al., 2018 (2) (Text S1 and Table S1); Pazoki et al., 2018 (3) ; and Wang et al., 2018 (4) .
Alcohol consumption	20117	--
Lipidemia	130814 , 20003	Dyslipidemia was defined based on ICD-10 code E78 or self-reported lipid-lowering medications, including simvastatin, pravastatin, fluvastatin, atorvastatin, rosuvastatin, ezetimibe, nicotinic acid product, or fenofibrate. Medications were selected following Tikkanen et al., 2018 paper (5).
Hypertension first occurrence	131286 , 131288 , 131290 , 131292 , 131294 , 132180	Hypertension was based on ICD-10 codes I10-I13, I15, and O10.
Self-reported depression	2090 , 2100 , 2050 , 2060	Self-reported depression was defined as a self-reported clinic visit for depression or a Patient Health Questionnaire score of 3 or above.
Type 2 Diabetes	130708 , 130709	ICD-10 code E11 first reported at/before accelerometer study or diabetes medication use reported at assessment visit.
Sleep apnea	131060 , 41270	Based on ICD-10 code G47.
Insomnia	1200	--
Chronotype	1180	--
Daytime dozing / sleeping	1220	--
BMI Polygenic Risk Score	26216	--
Genetic principal components	22009	--
Accelerometer derived variables and their QC measures	Please see Return 1862 and Jones et al., 2019 (6).	Return 1862: https://biobank.ctsu.ox.ac.uk/crystal/dset.cgi?id=1862). QC measures are listed in Supplemental Figure 1

Supplemental Table 3. Participants baseline characteristics comparing those with and without updated baseline measurements		
	Without updated measurement N = 9,117	With updated measurement (>1 instances) N = 1,455
Age (years), mean (SD)	63.4 (7.7)	63.2 (7.6)
Male %	47.2	49.6
Townsend deprivation index, mean (SD)	-1.6 (2.8)	-2.1 (2.6)
College or University degree %	39.8	44.7
White %	97.0	98.0
Current Occupation/shift work %		
Employed, never/rarely shift work	44.8	35.2
Employed, sometimes/usually/always shift work	8.0	5.6
Retired/Other	47.2	59.2
Smoking status %		
Never	54.5	58.2
Previous	38.3	38.4
Current	7.1	3.4
Moderate-vigorous physical activity (min/day), mean (SD)	38.3 (33.9)	39.8 (35.2)
Healthy diet score, mean (SD) †	3.1 (1.2)	3.1 (1.2)
Alcohol consumption %		
Never	3.4	3.1
Previous	3.5	3.1
Current	93.2	93.8
Lipidemias %	31.8	36.4
Hypertension %	42.4	40.9
Self-reported depression %	36.8	35.6
Type 2 diabetes	11.6	10.2
Sleep apnea %	1.7	1.5
Insomnia %		
Never/rarely	24.2	23.8
Sometimes	46.7	46.3
Usually	29.1	29.9
Objective sleep duration, mean (SD)	7.3 (0.9)	7.2 (0.9)
Chronotype %		
Definitely a 'morning' person	23.5	25.4
More a 'morning' than an 'evening' person	33.4	33.2
Intermediate	9.6	9.8
More an 'evening' than a 'morning' person	25.5	22.5
Definitely an 'evening' person	8.0	9.1
Daytime dozing / sleeping %		
Never/rarely	76.5	75.7
Sometimes	20.7	20.9
All of the time/Often	2.9	3.4
Baseline BMI (kg/m²), mean (SD)	27.3 (5.2)	27 (4.8)
Endline BMI (kg/m²), mean (SD)	27.4 (5.2)	27.1 (4.7)
Days between BMI measurements, mean (SD)	893.5 (601.5)	913 (698.2)

† Healthy diet score was adopted from the American Heart Association guidelines and was created following Rutten-Jacobs et al., 2018 paper (7, 8). The table was constructed after missing values had been filled in; No single covariate had more than 2.7% missing values. BMI: body mass index

Supplemental Table 4. Distributions of continuous outcome variables and time difference variables, N = 10,572					
	Days between key variable measurements			Distribution of BMI change outcomes standardized to three-year intervals	
	Two BMI measurements	Accelerometer* and baseline BMI	Follow-up BMI and accelerometer	BMI change kg/m ²	Relative BMI change percentage
Mean	896	14	882	0.03	0.34
STD	616	159	613	2.69	9.56
Minimum	182	-365	183	-12.21	-44.22
25%	441	-90	462	-1.04	-3.91
50%	732	11	698	0.06	0.23
75%	1105	123	1084	1.27	4.81
maximum	3652	365	3536	12.09	45.28
*The term 'accelerometer' refers to the accelerometer study date, which varied for each participant, ranging from June 2013 to December 2015.					

Supplemental Table 5. Associations between irregular sleep duration and risk of a standardized BMI change of at least 4.43 kg/m ² standardized to three-year intervals, N = 10,572				
Exposure	Incident Obesity / Sample Size	RR (95% CI) Model 1 [†]	RR (95% CI) Model 2 [‡]	RR (95% CI) Model 3 [§]
Sleep duration SD categories				
≤30 mins	53 / 1523	Ref.	Ref.	Ref.
31-45 mins	124 / 3138	1.09 (0.80, 1.48)	1.08 (0.79, 1.48)	1.08 (0.79, 1.47)
46-60 mins	143 / 2744	1.41 (1.04, 1.91)	1.38 (1.02, 1.87)	1.38 (1.02, 1.86)
>60 mins	163 / 3167	1.35 (1.003, 1.83)	1.30 (0.96, 1.76)	1.26 (0.93, 1.71)
Per 1-hour increment	483 / 10572	1.09 (0.95, 1.26)	1.08 (0.93, 1.25)	1.05 (0.90, 1.22)
<i>P</i> -trend*	NA	0.2180	0.3003	0.5251
<p>* Continuous sleep duration SD was included when calculating <i>P</i>-trend. [†] Model 1 adjusted for age in years, sex, ethnic background, Townsend deprivation index, education, occupation/shift work, and follow-up period (days between the two BMI measurements) [‡] Model 2 adjusted for covariates in model 1 along with, smoking, physical activity, healthy diet score, alcohol consumption, dyslipidemia, hypertension, depression, and diabetes. [§] Model 3 adjusted for covariates in model 2 along with sleep apnea, insomnia, accelerometer measured sleep duration, chronotype, and daytime dozing. Results from Poisson regression with a robust error variance model. Of note, 4.43 kg/m² is the 95th percentile of BMI change. SD: Standard deviation, BMI: Body mass index, RR: risk ratio, CI: confidence interval, NA: Not applicable</p>				

REFERENCES

1. Benjamin EJ, Blaha MJ, Chiuve SE, Cushman M, Das SR, Deo R, et al. Heart Disease 1. Bradbury KE, Guo W, Cairns BJ, Armstrong ME, Key TJ. Association between physical activity and body fat percentage, with adjustment for BMI: a large cross-sectional analysis of UK Biobank. *BMJ open*. 2017;7(3):e011843.
2. Rutten-Jacobs LC, Larsson SC, Malik R, Rannikmäe K, Sudlow CL, Dichgans M, et al. Genetic risk, incident stroke, and the benefits of adhering to a healthy lifestyle: cohort study of 306 473 UK Biobank participants. *bmj*. 2018;363.
3. Pazoki R, Dehghan A, Evangelou E, Warren H, Gao H, Caulfield M, et al. Genetic predisposition to high blood pressure and lifestyle factors: associations with midlife blood pressure levels and cardiovascular events. *Circulation*. 2018;137(7):653-61.
4. Wang M, Zhou T, Song Q, Ma H, Hu Y, Heianza Y, et al. Ambient air pollution, healthy diet and vegetable intakes, and mortality: a prospective UK Biobank study. *International journal of epidemiology*. 2022;51(4):1243-53.
5. Tikkanen E, Gustafsson S, Ingelsson E. Associations of fitness, physical activity, strength, and genetic risk with cardiovascular disease: longitudinal analyses in the UK Biobank Study. *Circulation*. 2018;137(24):2583-91.
6. Jones SE, Lane JM, Wood AR, van Hees VT, Tyrrell J, Beaumont RN, et al. Genome-wide association analyses of chronotype in 697,828 individuals provides insights into circadian rhythms. *Nature communications*. 2019;10(1):343.
7. Benjamin EJ, Blaha MJ, Chiuve SE, Cushman M, Das SR, Deo R, et al. Heart Disease and Stroke Statistics-2017 Update: A Report From the American Heart Association. *Circulation*. 2017;135(10):e146-e603.
8. Rutten-Jacobs LC, Larsson SC, Malik R, Rannikmae K, consortium M, International Stroke Genetics C, et al. Genetic risk, incident stroke, and the benefits of adhering to a healthy lifestyle: cohort study of 306 473 UK Biobank participants. *BMJ*. 2018;363:k4168.