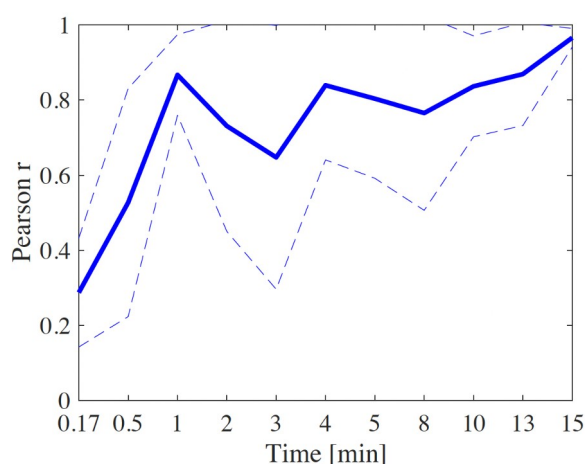


SUPPLEMENT

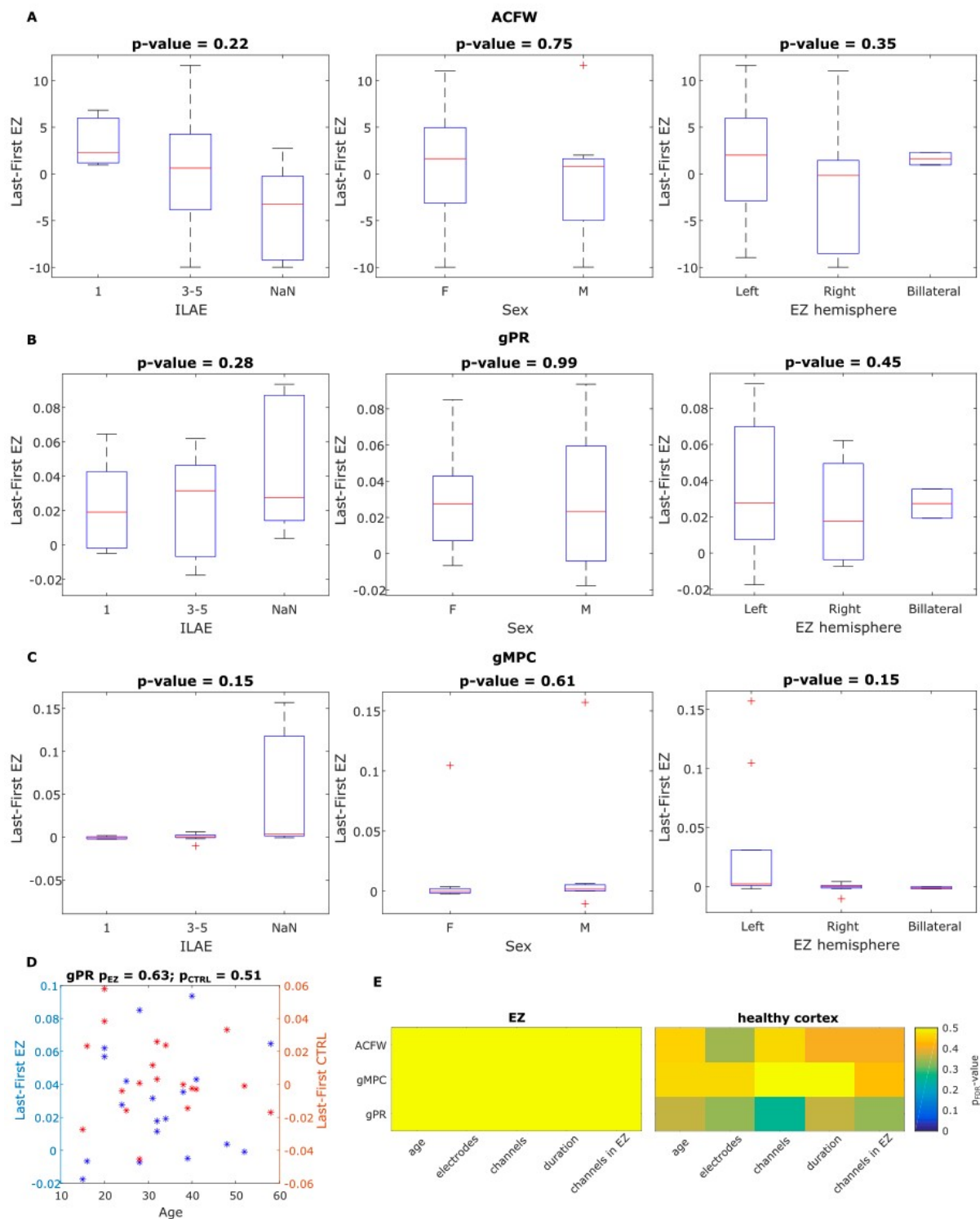
Pro-ictal, rather than pre-ictal, brain state marked by global critical slowing and local gamma power increase

I. Dallmer-Zerbe^{1,2,*}, J. Kopal^{1,3*}, A. Pidnebesna^{1,4}, J. Curot^{3,5}, M. Denuelle^{3,5}, A. De Barros⁶, J.C. Sol⁶, L. Valton^{3,5}, E.J. Barbeau^{3,+}, J. Hlinka^{1,4,+}



Supplementary Figure 1

Selection of analysis segment length. The selection of optimal segment length was based on the stability of MPC. Specifically, we estimated MPC in 2 hour long segments and in shorter segments of various lengths. These segments were chosen randomly from within the original 2 hours. We then quantified the correlation between MPC from the 2 hours long segment and corresponding shorter segment. The figure depicts the mean \pm standard deviation of Pearson's correlation between two vectorized MPC matrices across 10,000 repetitions. Based on this analysis, the correlation between segments of 15 minutes and 2 hours is stronger than 0.95. Therefore, we used 15 minutes long segment in the subsequent analyses (later shortened to 10 minutes, to increase the dataset size).



Supplementary Figure 2

The association of gPR, gMPC and ACFW with clinical variables. We tested for the group difference in the ACFW (A), gPR (B), and gMPC (C) change based on surgery outcome (ILAE 1 vs. ILAE 3-5), sex (male vs. female), and hemisphere of EZ and resection (left vs. right). NaN in ILAE corresponded to cases where surgery was not offered. In addition, we only compared ILAE 1 against ILAE 3-5. D) The scatter plot depicts the example of a relationship between the change in gPR with

age in both EZ (in blue) and healthy cortex (orange). The p -value of Pearson's correlation was used to determine the significance. E) We extended this analysis to other qualitative clinical variables (number of electrodes, number of channels, time since epilepsy diagnosis at the time of hospitalization, and number of electrodes) and other measures (gMPC, ACFW). Resulting p -values were corrected for multiple comparisons using FDR correction separately for each measure. None of the linear associations exceeded the significance level as shown in the heatmap. Collectively, we did not find any significant association or difference between any clinical variable and the measure changes.