

Appendix A Travel volume to NL

A.1 Pre-pandemic

International Air Transport Association (IATA) data reported the number of passengers traveling in all classes for flights to and from Newfoundland and Labrador from January 2019 through March 2020 ([International Air Transport Association, 2020](#)). We focus on the origin and destination that were reported for each trip (not layovers). We classify the data into three categories: inbound, outbound, and within province. In our analyses, we use inbound air travel volume.

A.2 During the pandemic

A.2.1 Travel measures

In response to the COVID-19 pandemic in Newfoundland and Labrador, several travel measures were implemented at the federal or provincial levels (summarized in Table 2). At the federal level, on March 16, 2020, entry into Canada by air was allowed only to Canadians and permanent residents of Canada, and citizens of the United States of America. Air crews, travelers arriving in Canada in transit to a third country, diplomats, or immediate family members of Canadian citizens were also exempt ([Trudeau, 2020](#)). At the provincial level, on March 20, 2020, 14-day self-isolation was ordered for all individuals entering Newfoundland and Labrador from outside the province ([Exemption Order, 2020](#)). This order included some exemptions, e.g. workers in transportation, essential workers, and rotational workers ([Exemption Order 2, 2020](#)). Further provincial travel measures were implemented on April 23, 2020 ([Amendment No. 6, 2020](#)). These measures required that all individuals arriving in Newfoundland and Labrador from outside the province must complete a Travel Declaration Form (TDF) and have a self-isolation plan to submit to a government representative upon entry. Also, all individuals arriving in the Labrador part of the province by motor vehicle from the province of Québec must immediately stop at their point of entry indicated by a representative of the Government of Newfoundland and Labrador, to submit their declaration form and their self-isolation plan ([Amendment No. 8, 2020](#)).

Effective May 4, 2020, all individuals were prohibited from entering Newfoundland and Labrador except residents of Newfoundland and Labrador, asymptomatic workers, and individuals who received a travel exemption ([Amendment No.11, 2020](#); [Travel Exemption Order, 2020](#)). There were limited numbers of exempted individuals who were not required to complete the TDF and submit the self-isolation plan. These were travelers who stayed in the province less than 24 hours, arrived daily or several times a day via the Labrador-Québec border, entered the province via the Labrador-Québec border for school reasons, or arrived weekly or several times a week in the province ([Declaration Exemption Order, 2020](#); [Self-Isolation Exemption Order, 2020](#)). Submitting a TDF at the Labrador-Québec border relaxed further on June 25, 2020, especially for the residents of Labrador City, Wabush, Fermont, the Labrador Straits area, Blanc Sablon, and greater Québec Lower North Shore area ([Labrador-Quebec Border Amendments, 2020](#)). Completing a TDF was required even when the Atlantic Bubble was enacted ([Atlantic Travel Amendments, 2020](#)). All these travel orders were in place until the first phase of reopening. Effective on July 1, 2021, an approved reason to travel to the province, and completion of a TDF, was no longer required ([Re-Opening - Travel, 2021](#)). We use the TDF information compiled by the Newfoundland and Labrador Centre for Health Information to estimate arrival volume in the province during the pandemic.

A.2.2 Travel volume

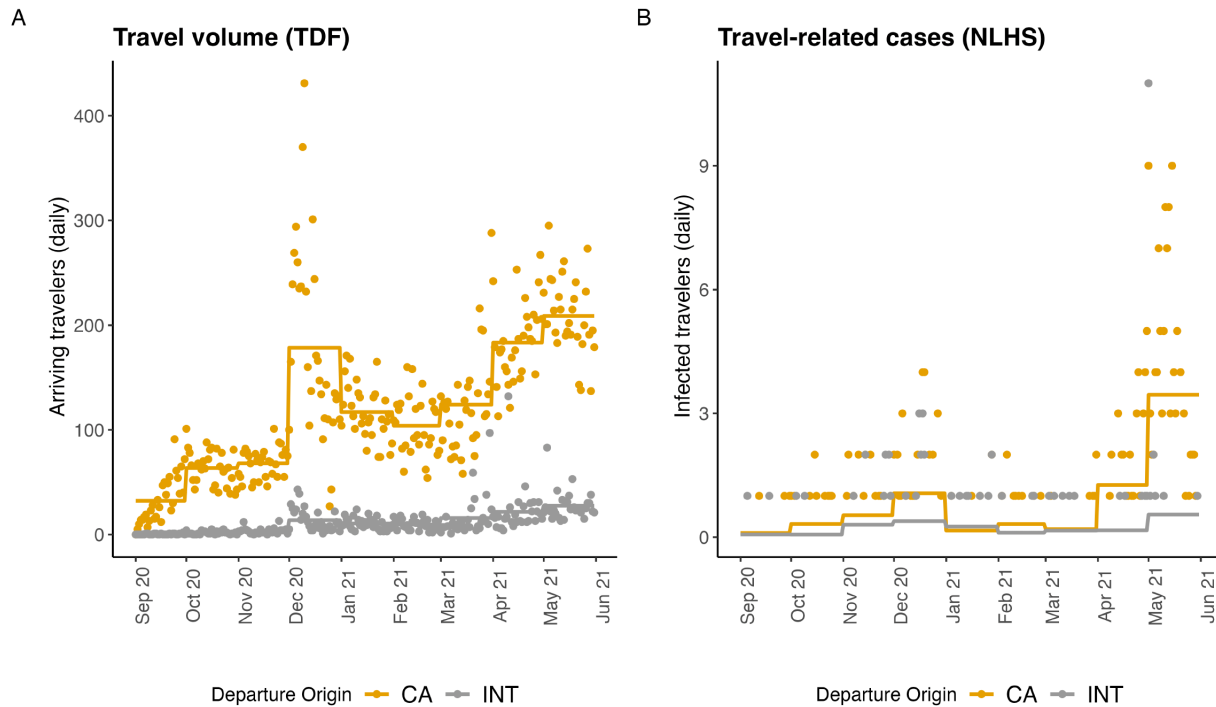


Fig. A1 A. Travel volume of non-exempt travelers arriving in NL as reported by the TDF. Travel volume is a variable included in several of our models and may affect the number of travel-related cases reported in NL B. Travel-related cases reported in the Newfoundland and Labrador Health Services (NLHS) - Digital Health COVID-19 database (September 2020 to May 2021; Canada - yellow; international - grey). Both daily values (dots) and monthly averages (lines) are shown.

A.3 All time

The Frontier Counts (FC) provide counts of entries into Canada by international travelers at Canadian ports of entry. Total travel volume includes all international travelers that were categorized as: Canadian residents returning to Canada, United States of America residents entering Canada, residents of countries other than the United States of America entering Canada and ‘other’ travelers which consist of foreign and resident crew members, diplomats, military personnel, immigrants and former residents ([Statistics Canada, 2020-2021](#)). For this study, we focus on Newfoundland and Labrador ports of entry.

Data reported by Frontier Counts are extracted from different data sources provided by the Canada Border Services Agency (CBSA), i.e., Primary Inspection Kiosks (electronic systems at major airports), E311 Declaration Cards (forms completed at Canadian international airports without electronic system), and Telephone Reporting Centre-CANPASS (an electronic system for private plane or private boat or who report a land crossing by phone) ([Statistics Canada, 2020-2021](#)).

A.4 Estimating travel volumes not reported in the data sources

A.4.1 Non-air travel volume from Canadian origins

Reports from the Newfoundland and Labrador Department of Tourism, Culture, Arts and Recreation (TCAR) from 2011 to 2018 indicate that air travel is the main mode of arrival for visitors to NL regardless of the season.

The mean percentage of non-NL resident visitors arriving by air, auto, and cruise ships was 76%, 18%, and 6% respectively over three years 2016 to 2018 (Government of Newfoundland Labrador, 2017, 2018a).

From May to October 2016, 73% of non-NL residents arriving from Canadian origins to Newfoundland and Labrador were by air (Government of Newfoundland Labrador, 2016); for arrivals from international origins this value was 85% (Government of Newfoundland Labrador, 2018), and with the remaining non-NL resident arrivals occurring by auto/ferry. Regardless of origin, the fraction of non-NL resident visitors who are using auto/ferry in spring (27%) was more than in fall (19%; Government of Newfoundland Labrador 2017).

Using all the TCAR reports from the Government of Newfoundland and Labrador (2020-2021), we estimated a correction factor, $\alpha_{CA,1}(t)$ (see Table A1 for notation), to calculate the total travelers (air and auto/ferry) originating from Canada from the air arrival data (IATA, $s = 1$). The estimated value multiplies the travel volume by air from Canadian origins and is 1.24 for September, October, November, and March, 1.14 for winter months (December, January, and February) and 1.37 for warmer months in spring and summer (April to August). For international arrivals, this correction for arrivals by auto/ferry is not necessary owing to the Frontier Counts data ($s = 3$), which reports arrivals by all travel modes.

Table A1 Parameter values used to estimate the total travel volume arriving in Newfoundland and Labrador from Canadian ($i = CA$) and international ($i = INT$) origins. Data sources are: IATA ($s = 1$); TDF ($s = 2$); and FC ($s = 3$).

Symbol	Description	Value
$Z_{i,s}(t)$	Number of travellers arriving from origin i as reported by data source s	See Figure 2A. For the FC data ($s = 3$) we just have $i = INT$.
$\alpha_{i,s}(t)$	Correction factor to estimate travellers by modes other than air	Values vary for different time periods with complete details in Table A3. $\alpha_{CA,1}(t)$ values are between 0.14 and 0.37, which means that travel volumes increase by 14-37% when the exclusions are considered. $\alpha_{INT,1}(t)$ was determined based on the FC data ($s = 3$) as this data reported arrivals for international origins for all modes.
$\beta_{i,s}(t)$	For the IATA data ($s = 1$) excluded travellers are domestic crew members. For the TDF data ($s = 2$) exempt travelers are crew, NL residents, and other exempt travellers	Values vary monthly with complete details in Table A3. $\lambda_{CA,1}(t)$ is between 2,107 and 24,952, $\lambda_{CA,2}(t)$ is between 5,863 and 15,048, and $\lambda_{INT,2}(t)$ is between 1,916 and 5,620 travellers excluded each month.
$h_i^{tot}(t)$	Fraction of travellers from each Canadian province and territory	Values vary monthly with complete details in Table A3.
h_i^{rw}	Fraction of rotational workers from each Canadian province or territory	Assumed not to vary over time with values reported in Table A3.

A.4.2 Crew members and exempt travelers

Monthly crew member travel volume from international origins was obtained from the Frontier Counts data source ($s = 3$) both before and during the pandemic. The number of travelers per month that were crew members from Canadian origins is assumed to be 2.5 times the volume of crew members from international origins.

Travel declaration forms data ($s = 2$) reported arriving travel volume each day from Canadian or international origins during the pandemic. TDF data does not consider travelers who were exempt from completing the form (see Table 1 in the main text, and Section A.2). We were able to estimate the correction for excluded travelers for each month and assumed an equal number of excluded travelers arrived each day during that month.

To estimate the number of exempt travelers from international origins, we compared the two data sources: TDF ($s = 2$) and IATA ($s = 3$). Since $Z_{INT,3}$ included all international arrivals, the difference between this data source and $Z_{INT,2}$ is the number of international exempt travelers per month, $\lambda_{INT,2}(t)$.

Travelers from Canada exempt from filling out a TDF were interprovincial workers, NL residents, domestic crew members, and exempt travelers via the Labrador-Québec border (see Section A.2). The correction applied to the TDF data source, where $\beta_{CA,2}(t)$ accounts for the exclusion of both domestic crew members and other exempt travelers. To estimate the portion of other arriving exempt travelers (not crew), we assumed that the number of

total exempt arrivals (residents and non-residents) was 2.4 times the number of exempt non-NL resident arrivals (see [Aleman et al 2021](#) for a justification of this assumption), where the number of exempt non-NL resident arrivals from domestic origins is assumed to equal the number of exempt non-NL residents arriving from international origins per month. This value of 2.4 may be an over-estimate, but this over-estimate compensates for underestimation for other reasons such as challenges in submitting the TDF for travelers arriving by land.

A.5 Proportion and type of travelers arriving from a given origin

The TDF data (during the pandemic) was used to estimate the monthly percentage of travelers originating from each country (international travel volume) arriving to Newfoundland and Labrador during the pandemic (Table A2). These values show that the United States comprises most arrivals from international origins, implying that our assumption that infection prevalence for international arrivals is equal to infection prevalence in the United States is reasonable.

Table A2: Percentage of travel volume from international origins during the COVID-19 pandemic, September 2020 to May 2021

Origins	2020-09	2020-10	2020-11	2020-12	2021-01	2021-02	2021-03	2021-04	2021-05
Argentina	0.000	0.000	0.000	0.000	0.000	0.000	0.000	0.153	0.000
Mauritius	0.000	0.000	0.000	0.000	0.305	0.377	0.000	0.000	0.118
Mexico	0.000	7.692	0.000	2.336	1.829	2.264	0.615	1.227	1.294
Montenegro	0.000	0.000	0.000	0.000	0.000	0.000	0.000	0.153	0.000
Morocco	0.000	0.000	0.000	0.000	0.000	0.000	0.000	0.000	0.235
Moszenbeque	0.000	0.000	0.000	0.000	0.000	0.000	0.205	0.000	0.000
Mozambique	0.000	0.000	0.000	0.000	0.305	0.000	0.000	0.000	0.118
Myanmar	0.000	0.000	0.000	0.000	0.000	0.000	0.000	0.000	0.118
Namibia	0.000	0.000	0.000	0.234	0.000	0.000	0.205	0.000	0.000
Nepal	0.000	0.000	0.000	0.000	0.000	0.755	0.000	0.000	0.235
Netherlands	0.000	0.000	0.990	0.935	0.610	0.000	1.230	1.687	1.176
New Zealand	0.000	1.923	0.000	0.000	0.610	0.000	0.000	0.000	0.000
Nigeria	0.000	1.923	0.000	1.402	1.524	3.019	1.434	1.994	1.529
Norway	0.000	1.923	7.921	2.804	3.659	2.264	1.639	2.301	1.412
Oman	0.000	0.000	0.000	0.467	0.000	0.000	0.000	0.153	0.118
Pakistan	0.000	0.000	0.000	0.467	0.610	1.509	1.434	0.307	0.000
Panama	0.000	0.000	0.990	0.000	0.000	0.000	0.000	0.153	0.000
Papua New Guinea	0.000	1.923	0.000	0.000	0.000	0.755	0.000	0.000	0.000
Australia	0.000	0.000	0.000	0.701	0.305	0.377	0.410	0.767	0.588
Peru	0.000	0.000	0.000	0.000	0.000	0.000	0.000	0.000	0.353
Philippines	0.000	1.923	0.000	4.439	0.915	1.887	1.434	4.755	2.000
Poland	0.000	0.000	0.000	0.234	0.305	0.000	1.639	0.307	2.588
Portugal	0.000	0.000	0.000	0.234	0.915	0.000	0.410	0.614	0.235
Qatar	0.000	0.000	0.000	1.869	0.305	3.019	0.205	1.074	1.412
Romania	0.000	0.000	0.000	0.234	0.305	0.000	0.205	0.153	0.235
Russia	0.000	0.000	0.000	0.234	0.000	0.377	0.410	0.460	0.824
Rwanda	0.000	0.000	0.000	0.000	0.000	0.377	0.205	0.307	0.000
Saudi Arabia	0.000	1.923	0.000	1.402	1.220	1.509	0.205	0.614	0.824
Austria	0.000	0.000	0.000	0.234	0.610	0.000	0.000	0.000	0.118
Scotland	0.000	3.846	0.990	0.935	0.610	1.132	2.254	3.067	0.000
Serbia	0.000	0.000	0.000	0.000	0.000	0.000	0.205	0.153	0.118
Singapore	0.000	0.000	0.000	0.234	0.000	0.755	0.000	0.153	0.471
Sint Maarten	0.000	0.000	0.000	0.000	0.000	0.000	0.000	0.153	0.000
Slovenia	0.000	0.000	0.000	0.000	0.610	0.000	0.000	0.000	0.000
South Africa	0.000	0.000	0.000	0.000	0.000	1.132	1.025	0.460	0.235
South Korea	0.000	0.000	0.000	0.000	0.000	0.377	0.000	0.153	0.000
Azerbaijan	0.000	0.000	0.000	0.234	0.000	0.000	0.410	0.000	0.353
Spain	0.000	3.846	0.990	3.738	3.354	2.642	0.615	1.380	4.235
Srilanka	0.000	0.000	0.990	0.234	0.610	1.509	0.615	0.153	0.471
St Kitts and Nevis	0.000	0.000	0.000	0.000	0.000	0.000	0.000	0.153	0.000
Suriname	0.000	0.000	0.000	0.935	0.305	0.755	1.434	14.877	0.000
Sweden	0.000	1.923	0.000	0.234	0.000	0.000	0.000	0.460	0.235
Switzerland	0.000	0.000	0.000	0.234	0.305	0.000	0.615	0.000	0.235
Taiwan	0.000	1.923	0.000	0.234	0.000	0.377	0.000	0.000	0.235
Tanzania	0.000	0.000	0.000	0.000	0.305	1.132	0.000	0.000	0.353
Thailand	0.000	0.000	0.000	0.000	0.305	0.000	0.000	0.153	8.235
Trinidad and Tobago	0.000	0.000	0.990	0.935	2.439	2.642	1.230	2.147	1.647
Tunisia	0.000	0.000	0.000	0.000	0.000	0.000	0.000	0.000	0.118
Turkey	0.000	0.000	0.000	0.467	1.220	1.132	0.205	0.920	0.000
UAE	0.000	1.923	0.000	0.234	0.915	0.000	0.410	1.227	0.588
UK	16.667	13.462	16.832	10.047	9.451	7.925	3.074	2.607	11.059
Bangladesh	0.000	0.000	0.000	1.636	2.439	6.038	3.074	1.227	3.529
Ukraine	0.000	0.000	0.000	0.000	0.610	0.000	0.000	0.153	0.353
USA	50.000	44.231	48.515	36.682	32.012	24.151	39.139	30.675	32.706
Uzbekistan	0.000	0.000	0.000	0.000	0.000	0.000	0.000	0.000	0.118
Vietnam	0.000	1.923	0.000	0.000	0.610	0.000	0.000	0.000	0.118
Wales	0.000	0.000	0.000	0.000	0.000	0.000	0.410	0.000	0.000
Zambia	0.000	0.000	0.000	0.000	0.000	0.000	0.000	0.153	0.235
Zimbabwe	0.000	0.000	0.000	0.000	0.305	0.377	0.205	0.307	0.235
Barbados	0.000	0.000	0.990	0.000	0.000	0.377	0.000	0.307	0.118
Belgium	0.000	0.000	0.000	0.000	0.000	0.000	0.205	0.000	0.000
Belize	0.000	0.000	0.000	0.467	0.000	0.000	0.205	0.153	0.118
Benin	0.000	0.000	0.000	0.000	0.305	0.000	0.000	0.000	0.000
Bermuda	0.000	0.000	0.000	0.234	0.000	0.377	0.000	0.000	0.000
Bolivia	0.000	0.000	0.000	0.000	0.000	0.377	0.000	0.000	0.000
Bosnia and Herzegovina	0.000	0.000	0.000	0.000	0.000	0.000	0.000	0.153	0.000
Botswana	0.000	0.000	0.000	0.000	0.000	0.377	0.000	0.000	0.000
Brazil	8.333	0.000	0.990	1.168	2.744	1.509	1.434	1.227	0.588
Brunei	0.000	0.000	0.000	0.234	0.000	0.377	0.205	0.000	0.118

Continued on next page

Table A2 – continued from previous page

International Origins	2020-09	2020-10	2020-11	2020-12	2021-01	2021-02	2021-03	2021-04	2021-05
Bulgaria	0.000	0.000	0.000	0.000	0.000	0.000	0.410	0.153	0.235
Cameroon	0.000	0.000	0.000	0.000	0.000	0.377	0.410	0.000	0.235
Cape Verde	0.000	0.000	0.000	0.000	0.000	0.000	0.000	0.307	0.000
Caribbean	0.000	0.000	0.000	1.402	0.610	0.377	0.205	0.460	1.294
Chad	0.000	0.000	0.000	0.000	0.305	0.000	0.000	0.000	0.000
Chile	0.000	0.000	0.000	0.000	0.610	0.377	0.000	0.000	0.000
China	8.333	0.000	0.000	0.935	0.610	0.755	0.615	0.920	1.294
Colombia	0.000	0.000	0.000	0.000	0.610	0.000	0.000	0.153	0.118
Congo DRC	0.000	0.000	0.000	0.000	0.000	0.000	0.000	0.000	0.353
Costa Rica	0.000	0.000	0.000	0.234	0.305	0.000	0.000	0.000	0.235
Croatia	0.000	0.000	0.000	0.000	0.000	0.000	0.000	1.227	0.353
Africa	0.000	0.000	0.000	0.234	0.305	0.755	0.205	0.153	0.000
Cuba	0.000	0.000	0.000	0.234	0.305	0.000	0.000	0.000	0.000
Czech Republic	0.000	0.000	0.000	0.000	0.000	0.000	0.000	0.000	0.118
Denmark	0.000	0.000	0.990	0.467	0.610	1.509	0.410	0.307	1.059
Dominican Republic	0.000	0.000	0.000	0.467	0.305	0.000	0.000	0.000	0.235
Ecuador	0.000	0.000	0.000	0.000	0.000	0.000	0.205	0.000	0.235
Egypt	8.333	0.000	1.980	0.234	1.220	0.755	0.615	0.920	0.824
El Salvador	0.000	0.000	0.000	0.234	0.000	0.000	0.000	0.000	0.000
Albania	0.000	0.000	0.990	0.000	0.000	0.000	0.205	0.000	0.000
Ethiopia	0.000	0.000	0.000	0.000	0.000	0.000	0.000	0.614	0.000
Faroe Islands	0.000	0.000	0.000	0.000	0.000	0.377	0.205	0.000	0.471
Finland	0.000	0.000	0.000	0.234	0.000	0.377	0.205	0.000	0.118
France	0.000	1.923	1.980	1.402	2.744	0.755	13.320	1.227	0.588
Gabon	0.000	0.000	0.000	0.000	0.000	0.000	0.205	0.000	0.000
Germany	0.000	0.000	2.970	1.168	0.610	1.132	1.639	1.074	0.471
Ghana	0.000	0.000	0.000	0.234	0.610	2.264	0.410	0.614	0.235
Greece	0.000	0.000	0.990	0.234	0.000	0.000	0.205	0.153	0.118
Guatemala	0.000	0.000	0.000	0.000	0.000	0.000	0.205	0.000	0.118
Guyana	8.333	0.000	0.000	3.037	3.963	1.132	1.844	1.687	1.294
Holland	0.000	0.000	0.000	0.000	0.000	0.000	0.000	0.307	0.000
Honduras	0.000	0.000	0.000	0.000	0.000	0.000	0.000	0.153	0.000
Hong Kong	0.000	0.000	0.000	0.000	0.000	0.000	0.000	0.153	0.118
Hungary	0.000	0.000	0.000	0.234	0.000	0.000	0.000	0.153	0.118
Iceland	0.000	0.000	2.970	0.467	0.305	0.755	0.000	0.614	0.118
India	0.000	0.000	0.990	2.804	1.524	4.906	3.484	3.221	0.471
Indonesia	0.000	0.000	0.000	0.467	0.000	0.000	0.000	0.153	0.118
Amsterdam	0.000	0.000	0.000	0.234	0.000	0.000	0.000	0.000	0.000
Iran	0.000	0.000	0.000	0.935	3.963	3.019	0.205	1.074	1.176
Iraq	0.000	0.000	0.000	0.000	0.305	0.000	0.000	0.000	0.000
Ireland	0.000	0.000	1.980	2.103	1.829	1.132	0.820	0.920	1.294
Israel	0.000	0.000	0.000	0.467	0.000	0.000	0.000	0.153	0.000
Italy	0.000	5.769	0.990	0.000	0.305	1.132	0.615	0.000	0.235
Jamaica	0.000	0.000	0.990	0.467	0.305	0.000	1.434	0.614	0.588
Japan	0.000	0.000	0.000	0.000	0.305	0.000	0.000	0.614	0.706
Jordan	0.000	0.000	0.000	0.467	0.610	0.755	0.615	0.000	0.471
Kazakhstan	0.000	0.000	0.000	0.467	0.000	1.132	0.000	0.460	0.118
Kenya	0.000	0.000	0.000	0.467	0.305	0.377	0.410	0.153	0.235
Angola	0.000	0.000	0.990	1.402	0.610	0.755	1.434	0.920	0.353
Kosovo	0.000	0.000	0.000	0.000	0.000	0.377	0.000	0.000	0.000
Kuwait	0.000	0.000	0.000	0.000	1.220	0.000	0.000	0.153	0.235
Kyrgyzstan	0.000	0.000	0.000	0.000	0.000	0.000	0.000	0.000	0.118
Latin America	0.000	0.000	0.000	0.000	0.000	0.000	0.000	0.000	0.235
Latvia	0.000	0.000	0.000	0.701	0.000	0.000	0.205	0.000	0.000
Lebanon	0.000	0.000	0.000	0.000	0.305	0.000	0.205	0.153	0.118
Libya	0.000	0.000	0.000	0.000	0.000	0.000	0.000	0.000	0.118
Lithuania	0.000	0.000	0.000	0.000	0.000	0.000	0.000	0.000	0.118
Antigua & Barbuda	0.000	0.000	0.000	0.000	0.305	0.000	0.000	0.000	0.000
Luxembourg	0.000	0.000	0.000	0.000	0.000	0.000	0.000	0.000	0.118
Malaga	0.000	0.000	0.000	0.000	0.000	0.000	0.000	0.153	0.000
Malawi	0.000	0.000	0.000	0.000	0.000	0.000	0.000	0.153	0.000
Malaysia	0.000	0.000	0.000	0.234	0.000	0.755	0.000	0.000	0.471
Martinique	0.000	0.000	0.000	0.000	0.000	0.000	0.205	0.000	0.000
Mauritania	0.000	0.000	0.000	0.000	0.305	0.000	0.000	0.000	0.000

The percentage of travel volume for each province or the territories from the IATA (before the pandemic) and TDF (during the pandemic) data was used to estimate the percentage of regular travelers arriving from each of these origins (Table A3).

The percentage of NL residents that are interprovincial employees working in each Canadian province or the territories is reported by Hewitt et al 2018. In this report, the largest number of NL residents that are interprovincial employees work in Alberta (57%), followed by Ontario (15%) and Nova Scotia (8%). These values are used to estimate the within-Canada origin of rotational workers (Table A3).

A.6 Estimating total travel volume

We estimated the total travel volume (see Section 2.2.1 of the main text for a definition) arriving in NL by considering three data sources: International Air Travel Association ($s = 1$), Travel Declaration Forms ($s = 2$), and Frontier Counts ($s = 3$) each with limitations, and each reported for different time periods (Table 1). We estimate

Table A3 Values for the parameters in table A1. $h_i^{tot}(t)$ (per month) is the fraction of Canadian travel volume that originates from each individual province or the territories. $\alpha_{CA,1}(t)$ is the correction factor to estimate the number of travellers arriving from Canada by modes other than air before the pandemic. $\lambda_{CA,1}(t)$ is the number of excluded travellers for data source $s = 1$ per month (pre-pandemic) whereas $\lambda_{CA,2}(t)$ and $\lambda_{INT,2}(t)$ are the monthly number of Canadian and international excluded travelers from data source $s = 2$ (during the pandemic). h_i^{rw} is the fraction of rotational workers from each Canadian province and territory.

Date	$h_i^{tot}(\%)$										$\alpha_{CA,1}(t)$	$\lambda_{CA,1}(t)$	$\lambda_{CA,2}(t)$	$\lambda_{INT,2}(t)$
	ON	QC	MB	NB	AB	NS	BC	SK	PEI	TR	CA	CA	CA	INT
2019-01	31.69	24.35	0.58	3.5	8.82	27.15	2.16	0.52	1.03	0.2	0.14	2920		
2019-02	32.05	25.84	0.68	3.79	7.52	26.88	2	0.44	0.61	0.21	0.14	2417		
2019-03	33.07	24.07	0.75	3.73	6.99	27.97	2.29	0.29	0.49	0.35	0.24	3642		
2019-04	33.8	22.96	0.72	3.97	7.72	27.03	2.09	0.6	0.75	0.36	0.37	3150		
2019-05	37.07	17.07	1.07	3.7	7.88	28.66	2.64	0.87	0.69	0.34	0.37	4750		
2019-06	42.03	13.73	1.49	3.23	9.74	23.9	4.1	0.58	0.68	0.53	0.37	5702		
2019-07	45.19	11.03	1.37	2.7	13.31	20.21	4.3	0.94	0.54	0.41	0.37	14075		
2019-08	44.14	11.81	1.17	2.83	10.7	22.29	4.67	1.22	0.73	0.45	0.37	6650		
2019-09	38.38	16.25	1.5	3.55	8.26	26.09	3.76	0.92	0.93	0.36	0.24	24952		
2019-10	33.86	19.34	1.1	3.33	9.14	28.6	2.9	0.47	0.73	0.52	0.24	9395		
2019-11	33.32	18.8	0.55	3.99	8.1	30.33	2.84	0.52	1.1	0.44	0.24	2842		
2019-12	34.95	14.93	0.9	4.05	10.99	27.68	4.4	0.59	0.8	0.7	0.14	2445		
2020-01	35.01	16.69	0.78	4.39	9.57	28.1	3.87	0.62	0.7	0.27	0.14	2107		
2020-02	33.33	19.82	0.78	4.44	7.73	28.01	4.03	0.42	0.93	0.52	0.14	2412		
2020-03	33.75	16.37	0.91	3.97	7.17	31.26	4.43	0.62	0.85	0.67	0.24	2252		
2020-09	23.78	3.72	0.72	4.45	9.31	52.64	2.38	0.52	1.24	1.24			15048	5620
2020-10	28.09	3.4	0.66	4.57	14.47	41.14	3.25	1.02	1.52	1.88			13838	4669
2020-11	25.7	4.86	0.69	5.49	16.38	39.38	4.81	0.54	0.74	1.42			10827	3399
2020-12	28.62	5.57	2.26	3.99	24.29	17.04	9.54	1.08	1.41	6.2			6941	2231
2021-01	30.1	7.17	1.16	5.27	22.84	20.55	7.01	0.69	0.61	4.61			5863	1916
2021-02	26.92	7.22	1.93	3.16	27.36	16.16	8.25	1.03	0.79	7.18			6548	2144
2021-03	28.41	10.07	1.9	3.15	25.88	12.75	8.74	1.33	0.68	7.1			6831	2238
2021-04	28.02	7.2	1.47	3.49	26.15	15.59	9.21	1.16	0.71	7			9845	3096
2021-05	28.18	6.98	1.53	3.58	27.92	14.68	8.37	1.67	1.11	5.98			9065	2841
$h_i^{rw}(\%)$	15	2	1	4	57	8	4	2	2	5				

the total travel volume considering all travel modes, travelers and crew, from the origin i at time t by introducing indicator variables that correct for exclusions in the data sources,

$$V_{i,s}(t) = (1 + \alpha_{i,s}(t)\mathbb{1}_{\text{MODES}})Z_{i,s}(t) + \beta_{i,s}(t)\mathbb{1}_{\text{TYPE}}, \quad (\text{A1})$$

where $Z_{i,s}(t)$ is the number of travelers arriving from origin i per day ($s = 2$), or per month ($s = 1, 3$) reported from a data source, s . Possible origins are international ($i = \text{INT}$) or Canada ($i = \text{CA}$), but in subsequent calculations below we will further partition departures from Canada into each Canadian province and the territories (where all three Canadian territories are combined).

The indicator variable $\mathbb{1}_{\text{MODES}}$ applies to data that does not report arrivals by all modes, and applies to the IATA data ($s = 1$) because this travel volume reports only arrivals by air. The correction factor, $\alpha_{j,s}(t)$, multiplies the reported travel volume by air. The indicator variable $\mathbb{1}_{\text{TYPE}}$ applies when some individuals are excluded from the reported travel volume, and the correction is additive. This correction applies to the IATA data, $\beta_{i,1}(t)$, for crew members that are not reported, and to the TDF data, $\beta_{i,2}(t)$, because arriving crew members on flights, ships, commercial freighters, NL residents, and other exempt travelers are not reported in this data.

The travel volume, $V_{i,s}(t)$, corrected for exclusions, can be calculated for all data sources s ; however, in practice the calculated values do not have a lot of overlap because the IATA data only corresponds to pre-pandemic time periods, the TDF data only corresponds to during the pandemic, and the FC data only reports travelers of international origin.

In Equation (A1), i refers to the Canadian or international origin of travel, but both the IATA and TDF data report the Canadian province or territory of origin. Therefore, we estimate travel volume from different Canadian provinces and the territories as,

$$v_{i,s}(t) = V_{CA,s}(t)h_i^{tot}(t), \quad (\text{A2})$$

where $h_i^{tot}(t)$ is the fraction of all Canadian travelers originating from each of the different non-NL provinces or the territories $i \in \{\text{BC, AB, SK, MB, ON, QC, NB, NS, PE, TR}\}$ on a given date t , where Yukon, Northwest territories, and Nunavut are combined and denoted as TR, $s = 1$ corresponds to the IATA data when we are considering times before the pandemic, and $s = 2$ corresponds to the TDF data when we are considering times during the pandemic.

During the public health emergency in NL, different travel restrictions were applied to rotational workers. Rotational workers are NL residents who work in other provinces. The number of rotational workers entering NL is difficult to estimate, but [Martignoni et al \(2022\)](#) estimates that 6,000 NL residents are rotational workers. If we assume a rotational worker has a set schedule of two weeks of work and home (alternating), then approximately 200 rotational workers will enter NL each day. The fraction of rotational workers that work in any given province or the Canadian territories, $i \in \{\text{BC, AB, SK, MB, ON, QC, NB, NS, PE, TR}\}$, is h_i^{rw} , which is estimated from [Hewitt et al \(2018\)](#) (see table A3). Therefore, the number of rotational workers arriving in NL during the pandemic from each of the different provinces and territories is,

$$v_i^{rw}(t) = 200h_i^{rw}. \quad (\text{A3})$$

The number of regular travelers (defined as all individuals that are not rotational workers) arriving from a Canadian origin, i , during the pandemic is,

$$v_i^r(t) = v_{CA,2}(t) - v_i^{rw}, \quad (\text{A4})$$

where the travel volume is estimated from the TDF data ($s = 2$) because this data source corresponds to during the pandemic. The quantity $v_i^{rw}(t)$ does not change with time, but $v_i^r(t)$ does, so the dependence on time is written so that the compacted notation $v_i^k(t)$ can be used. We define

$$v_i^r(t) = v_{INT,2}(t), \quad (\text{A5})$$

as the volume of regular travelers arriving from international origins during the pandemic, such that $v_i^k(t)$ is the volume of travelers arriving during the pandemic at time, t , that are rotational workers ($k = rw$, $i = CA$), regular travelers arriving from a Canadian origin ($k = r$, $i = CA$), or from an international origin ($k = r$, $i = INT$).

Appendix B Prevalence proportion at origin

B.1 Data sources

The data source for new SARS-CoV-2 cases (incidence) was the Public Health Agency of Canada (PHAC) for the Canadian provinces ([Public Health Infobase, 2020-2021](#)). We used the daily infection incidence in the United States for all international travelers due to the lack of seroprevalence data for other countries. The Center for Systems Science and Engineering (CSSE) at Johns Hopkins University was the data source for infection incidence in the United States ([Dong et al, 2020](#)).

We used the method described in [Martignoni et al \(2023\)](#) to estimate the coefficient of under-reporting for COVID-19 in region i , by considering the cumulative percentage of the population that was seropositive for SARS-CoV-2 antibodies relative to the number of reported COVID-19 cases in a region, i . We assumed the under-reporting coefficient, u_i , for a given region did not change over time. The cumulative percentage of the population infected at the end of September 2020 and May 2021 is determined from seroprevalence data ([Blood Donation Organizations, 2023](#); [Centers for Disease Control and Prevention, 2020-2021](#)) and divided by the cumulative reported cases for each region 13 days earlier because there are 9-12 days between symptom onset and seroconversion ([Lou et al, 2020](#)). The under-reporting coefficient, u_i , is calculated as the difference in the percentage of the population infected as estimated by the seroprevalence, divided by the difference in the percentage of the population reported as infected (Table B4).

Table B4 Under-reporting of COVID-19 cases.

Region i	Population N_i	Cumulative reported cases to 2020-09-17	Cumulative reported cases per capita to 2020-09-17	Cumulative reported cases to 2021-05-16	Cumulative reported cases per capita to 2021-05-16	Seropositivity to 2020-09-30	Seropositivity to 2021-05-29	Estimated unreported cases per reported case, u_i
BC	5,071,336	7,663	0.151%	139,240	2.746%	0.5%	3.099%	1.002
AB	4,371,316	16,274	0.372%	218,961	5.009%	0.69%	5.27%	0.988
SK	1,174,462	1,757	0.150%	44,531	3.792%	0.14%	4.32%	1.148
MB	1,369,465	1,500	0.110%	45,149	3.297%	1.45%	5.37%	1.230
ON	14,566,547	45,676	0.314%	509,316	3.496%	0.85%	4.1%	1.021
QC	8,484,965	66,356	0.782%	363,296	4.282%	1.23%	4.84%	1.032
NB	776,827	194	0.025%	2,063	0.266%	0.159%	0.172%	0.054
NS	971,395	1,086	0.112%	4,736	0.488%	0.16%	0.23%	0.186
PEI	156,947	57	0.036%	191	0.122%	0.142%	0.24%	1.148
TR	124,460	20	0.016%	829	0.666%	0.12%	0.29%	0.262
USA	332,660,077	6,704,918	2.016%	33,064,172	9.939%	4.9%	20.6%	1.981

B.2 Estimating prevalence from incidence data

To estimate point prevalence at the origin, we first estimate the incidence proportion (number of new cases divided by the population size) at a traveler’s origin, $f_i(t)$, on a day t , as

$$f_i(t) = \frac{c_i(t + t_d)u_i}{N_i}, \quad (\text{B6})$$

where $c_i(t)$ is the number of new cases reported on day t at the origin i , $t_d = 11$ days is the delay between exposure and reporting (we note that [Hendy et al 2021](#) reports this delay can be over 2 weeks), N_i is the population size for each origin, $i \in \{\text{INT, BC, AB, SK, MB, ON, QC, NB, NS, PE, TR}\}$ (based on 2021 values estimated from [Statistics Canada 2021](#) and [The United States government 2021](#)), and u_i is an origin-specific correction factor to account for under-reporting.

We convert from incidence proportion to prevalence proportion (the proportion of the population that have infections at time t) because we assume that the probability a traveler has an active infection at departure is equal to infection prevalence proportion at their origin. We assume that individuals have active infections for 14 days, and approximate point prevalence as $14f_i(t)$. This calculation is not exact. Indeed, suppose prevalence is increasing until time t . Then at time t , more new infections than recoveries are occurring, so that point prevalence is actually more than $14f_i(t)$; the situation is reversed for decreasing incidence.

Appendix C Infection status of arriving travelers

The infection status of arriving travelers indicates is the number of days since exposure. This quantity if used in the mechanistic model, for example, to estimate the probability of a positive PCR test.

We assume that the probability that a traveler is infected is equal to the prevalence proportion at the travelers origin, $f_i(t)$. We assume that the distribution of days since exposure of infected travelers at departure is uniformly distributed between 13 and 0 days ago, i.e.,

$$n_i(t, a) = \begin{cases} 14 \frac{f_i(t)}{14} = f_i(t) & \text{for } a = 0, 1, 2, \dots, 13 \\ 0 & \text{otherwise,} \end{cases} \quad (\text{C7})$$

where a is the number of days since exposure or the ‘age of infection’. Again, this is an approximation because if incidence is increasing at time t , there will be more individuals with recent exposures, so that the distribution of age of infection is right-skewed (i.e., the tail is to the right as there relatively fewer individuals exposed many days ago). An approximation is used because estimating the distribution of the ages of infection at any time from reported data is difficult. Indeed, whether a case is reported depends on the age of the infection: tests are requested once

symptoms develop, test results can be false negatives, and both of these processes depend on the age of infection. Due to the development of symptoms and pre-arrival testing, not all infected travelers end up traveling. If a pre-arrival test was required, the number of infected travelers arriving from an origin i that were exposed a days ago is,

$$T_i^{k,1}(t, a) = v_i^k(t)(1 - \gamma(a - 2))n_i(t, a), \quad (\text{C8})$$

where $v_i^k(t)$ is the travel volume from origin i of rotational workers ($k = rw$) or regular travelers ($k = r$) who departed on date t (see Eqs. (A3), (A4), and (A5)), $1 - \gamma(a - 2)$ is the probability of a false negative test for individuals exposed a days ago, where the test is assumed to occur 2 days before departure, when the infection prevalence at i is $n_i(t, a)$.

It is assumed that individuals with symptoms who receive a false negative test result on a pre-departure test still travel. When no pre-departure test is required, some travelers do not travel due to symptoms. The number of infected travelers that were exposed a days ago and arrive from origin i at t when no pre-departure test is required is,

$$T_i^{k,0}(t, a) = v_i^k(t)n_i(t, a)\rho\psi\Lambda(a), \quad (\text{C9})$$

where travelers develop symptoms with probability ρ , travel irrespective of symptoms with probability ψ , and first develop symptoms before departure (when their infection age is a at departure) with probability $\Lambda(a)$, where

$$\Lambda(a) = \sum_{\alpha=0}^a \lambda(\alpha) \quad (\text{C10})$$

and,

$$\lambda(a) = \Gamma(a, \text{shape} = 5.807, \text{scale} = 0.948)\Delta a. \quad (\text{C11})$$

This parameterization is from [Lauer et al \(2020\)](#), and corresponds to the first symptoms occurring a mean of 5.5 days after exposure with a standard deviation of 2.3 days ([Hart et al, 2021](#)). The probability density is discretized with $\Delta a = 1$ day because other data for our model occurs only at 1 day intervals. The cumulative mass function Eq. (C10) is used because travelers with infection age a that decided not to depart on date t may have first developed symptoms at any time 0 to a days after exposure.

In Canada, a pre-arrival test policy for international travelers was enacted on January 7, 2021. Having a negative COVID-19 test result (72 hours prior to departure) was required for travelers departing from international ports ([Government of Canada, 2020](#)) and from May 15, 2021, it was necessary for all travelers ([Traveler COVID-19 Testing 2021](#), see Table D5). The number of that infected travelers arrived in NL on day t with an infection of age a is,

$$T_i^k(t, a) = \mathbb{1}_{\text{PRE},i}^k(t) T_i^{k,1}(t, a) + (1 - \mathbb{1}_{\text{PRE},i}^k(t)) T_i^{k,0}(t, a), \quad (\text{C12})$$

where $\mathbb{1}_{\text{PRE},i}^k(t)$ is an indicator variable that is equal to 1 if a pre-departure test is required for travelers of type k , departing from origin i at time t , and 0 otherwise.

C.1 Mean time to developing symptoms after arrival

The mean time to developing symptoms after arrival is calculated as,

$$\bar{a} = \sum_{a=0}^{13} \sum_{a_t=0}^{13} a\lambda(a + a_t)p(a_t), \quad (\text{C13})$$

where the probability that an arriving traveler has age of infection a_t at arrival is,

$$p(a_t) = \frac{\frac{1}{14}(1 - \rho(1 - \psi)\Lambda(a))}{\sum_{a=0}^{13} \frac{1}{14}(1 - \rho(1 - \psi)\Lambda(a))}. \quad (\text{C14})$$

Since we only predict cases each day, and $\gamma(a)$ is a discrete function defined each day, \bar{a} from Eq. (C13) is rounded to the nearest integer before being used in Eq. (3).

The probability of infections of age a_t at arrival, amongst arriving travelers is calculated assuming that exposure times for travelers are uniformly distributed as 0 to 13 days before departure, and that $1 - \psi$ travelers that develop symptoms before departure do not travel. The average timing of first symptoms after arrival is calculated assuming no pre-departure test. As some travelers do not travel due to symptoms, the distribution of ages of infection in arriving travelers is skewed right (i.e., the tail is to the right) because more arriving travelers were exposed shortly before to departure.

The use of \bar{a} in Eq. (3) is an approximation because, more exactly, a traveler arriving on day t with infection age a might first show symptoms on any of the days post-arrival (14 possible days). For our model, there are 273 possible arrival days (September 1, 2020 to May 31, 2021) and 14 possible ages of infection at arrival, which means that it is necessary to calculate 3,822 values corresponding to each arrival date and age of infection. If we consider that travelers might first develop symptoms on any of the 14 days they are in self-isolation after arrival, then the number of calculations necessary increases to 53,508. To reduce the number of calculations needed, we assume that all arriving travelers first experience symptoms \bar{a} days after arrival, where the value of \bar{a} has some epidemiological basis (see Eq. (C13)), but is assumed equal for all travelers irrespective of when they were exposed.

Appendix D Post-arrival testing

PCR test sensitivity is based on Figure 3B in Hellewell et al (2021). As such,

$$\gamma(a) = [0, 0.05, 0.1, 0.55, 0.78, 0.77, 0.73, 0.68, 0.64, 0.59, 0.55, 0.49, 0.43, 0.37, 0.31], \quad (\text{D15})$$

for infection ages $a = [0, 1, \dots, 14]$ days.

Federal and provincial testing requirements during the study period are summarized in Table D5. Passengers on flights that were subject to exposure notifications were also required to complete PCR tests. These notifications are listed in Table D6.

Table D5 COVID-19 testing requirements for travellers arriving in Newfoundland and Labrador due to border measures implemented by the Government of Canada or Special Measures Orders issued by Newfoundland and Labrador.

Dates	Test policy
2020-09-09	Asymptomatic rotational workers are exempt from the requirement to self-isolate for 14 days if they receive a negative test result for a test completed between five and seven days after their return
2020-11-25	Rotational workers required to wait until day seven of their 14-day self-isolation period to arrange COVID-19 testing
2021-01-07	Requirement for mandatory negative COVID-19 test result for air passengers entering Canada (Federal measure)
2021-03-12	Domestic rotational workers can cease self-isolation if testing negative (tested upon return, day 7 and on day 11,12 or 13)
2021-03-27	Updated rotational worker requirements: must isolate away from families for 14 days, cannot avail test on day 7 or modified self-isolation
2021-04-19	Essential workers entering the province required to self-isolate until they receive their 1st negative test result
2021-05-15	COVID-19 testing order for individuals arriving in NL (testing requirements during their 14-day self-isolation)

Table D6 Exposure notification from Public Health Advisories in NL during the COVID-19 pandemic where passengers on arriving flights were asked to arrange COVID-19 testing ([Government of Newfoundland Labrador, 2023](#)).

Date	Exposure notification to passengers	Origin	Destination
2020-09-27	WestJet Flights 306 arrived on Monday, September 21 WestJet Flights 328 arrived on Monday, September 21	Winnipeg, MB Toronto, ON	St. John's, NL St. John's, NL
2020-10-05	Air Canada Flight AC604 arrived on Wednesday, September 30 Air Canada Flight AC8876 arrived on Wednesday, September 30	Toronto, ON Halifax, NS	Halifax, NS Deer Lake, NL
2020-10-23	Air Canada Flight 7484 arrived on Monday, October 12	Toronto, ON	Deer Lake, NL
2020-11-04	Air Canada Flight 7484 arrived on Friday, October 30	Toronto, ON	Deer Lake, NL
2020-11-23	Air Canada Flight 8880 arrived on Thursday, November 19	Halifax, NS	Deer Lake, NL
2020-11-24	People who returned to NL from Nova Scotia in the last two weeks, and who visited bars in Halifax and surrounding metro communities	NS	NL
2020-12-04	WestJet Flight 3428 arrived on Thursday, November 26	Halifax, NS	St. John's, NL
2020-12-20	Several flight advisories this weekend: Air Canada Flight 8862 arrived on Monday, December 7 Air Canada Flight 690 arrived on Friday, December 11 Air Canada Flight 8862 arrived on Friday, December 11 Air Canada Flight 8862 arrived on Tuesday, December 15 Air Canada Flight 690 arrived on Tuesday, December 15 Air Canada Flight 690 arrived on Thursday, December 17	Halifax, NS Toronto, ON Halifax, NS Halifax, NS Toronto, ON Toronto, ON	Gander, NL St. John's, NL Gander, NL Gander, NL St. John's, NL St. John's, NL
2020-12-29	Air Canada Flight 8880 arrived on Tuesday, December 22	Halifax, NS	Deer Lake, NL
2021-01-20	Who traveled on the MV Blue Puttees to and from North Sydney, Nova Scotia, and Port Aux Basques between Tuesday, December 29 and Saturday, January 16	Sydney, NS	Port Aux Basques, NL
2021-02-15	Air Canada Flight 7484 arrived on Thursday, February 11,	Toronto, ON	Deer Lake, NL
2021-03-04	Air Canada Flight 8996 arrived on Thursday, February 25	Halifax, NS	St. John's, NL
2021-04-19	Air Canada Flight 8008 arrived on Monday, April 13	Toronto, ON	Deer Lake, NL
2021-05-02	Air Canada Flight 8016 arrived on Friday, April 30	Montreal, QC	St. John's, NL
2021-05-06	Air Canada Flight 7540 arrived on Tuesday, May 4	Toronto, ON	Deer Lake, NL
2021-05-11	Air Canada Flight 7542 arrived on Monday, May 10	Toronto, ON	Deer Lake, NL

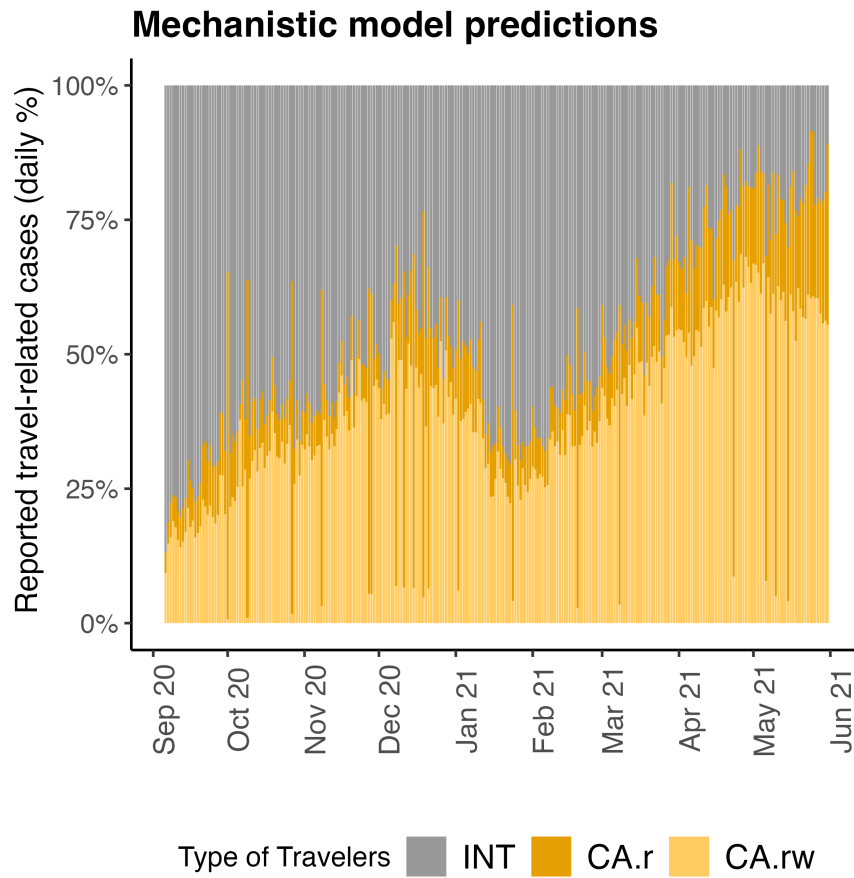


Fig. D2 Mechanistic model predictions of the daily percentage of reported travel-related cases of Canadian origin, both regular travelers (CA.r, dark yellow) and rotational workers (CA.rw, light yellow), and from international origins (grey). The ‘spikes’ coincide with the exposure notifications that required travelers on particular flights be tested (see Table D6 in the Supplementary Information).

Appendix E Model fit

The best model for travel-related cases of Canadian origin, Y_t is,

$$\eta_t = \sum_i \beta_i X_{i,t} \quad (\text{E16})$$

$$y_t = \exp(\eta_t) \quad (\text{E17})$$

$$y_t \sim POIS(Y_t) \quad (\text{E18})$$

where y_t is the number of travel-related cases predicted by the statistical model on day t , and $X_{i,t}$ is the product of travel volume and prevalence proportion for the origin i on day t . The estimates of the coefficients, β_i , for each i are AB = 13.1*, BC = -23.5, SK = 370.4*, MB = 168.4*, ON = -1.403, QC = -206.5*, NB = -444.8, NS = -1.96, PEI = 1278.8, and TR = -2.9, where the asterisk indicates estimates that are significantly different than zero. That these estimates are negative is not biologically meaningful, as high values of travel volume and prevalence proportion should correspond to an increase in travel-related cases, however, statistical models sacrifice some biological meaning, and better predict travel-related cases. We have also derived a mechanistic model that have biologically plausible parameter estimates in the main text.

The best model for travel-related cases of international origin, Y_t is,

$$\eta_t = \beta X_t \quad (\text{E19})$$

$$y_t = \exp(\eta_t) \quad (\text{E20})$$

$$y_t \sim POIS(Y_t) \quad (\text{E21})$$

where X_t is total travel volume of international origin on day t and $\beta = 0.011^*$ which is significantly different from zero.

Appendix F Statistical models representing data gaps

We formulated statistical models that represent different types of data gaps to understand how these gaps might affect the reliability of importation models.

We consider only one source of travel volume data. The total travel volume during the time that travel-related cases are reported depends substantially on the TDF data, so we consider models formulated using the IATA and FC data sources only, which are compared to models formulated with total travel volume. Table 1 describes the limitations of the IATA and the FC data. Notably, both these sources only report monthly travel volumes, so models developed for these data sources need to be fit to data describing monthly travel-related cases. Further, the IATA data reports travel volumes before the pandemic, and the FC data only reports international arrivals. For the IATA data, we used the travel volumes for 2019 to predict travel-related cases for the same month (September 2020 - May 2021). For the FC data, we only predicted travel-related cases of international origin.

Results of the modelling that considers single sources of travel volume data are in Table F7. These results find that the best model to predict travel-related cases of Canadian origin uses the total travel volume data source, and the best model to predict travel-related cases of international origin uses the IATA data source, where the IATA data source alone out-performs the total travel volume data source (which combines 4 sources including the IATA data). However, overall, our ability to test models using this approach is limited by needing to aggregate the travel-related cases by month, which reduces the number of observations to just 9 (as compared to 273 observations of daily travel-related cases each of Canadian or international origin).

We also considered models with prevalence proportion that was not corrected for under-reporting. Table F8 shows that correcting for under-reporting does not affect the model predictions at all. However, the estimated model coefficients are different when corrections for under-reporting occur.

Table F7 Model selection for monthly travel-related cases reported in NL from Canadian and international origins considering different types of travel volume data. All Canadian provinces are aggregated as there are only 9 observations, so the data are not sufficient to support the estimation of 10 coefficients.

	Data	Model	K	AICc	Δ AICc	log Lik	Lik Ratio
Canada							
1	total	Travel volume	1	239.2	0.00	-118.3	2342.8
2	IATA	Travel volume \times prevalence proportion	1	263.7	14.5	-125.6	2225.2
3	IATA	Travel volume	1	294.6	55.5	-146.0	2328.3
4	total	Travel volume \times prevalence proportion	1	356.8	117.6	-177.1	2287.4
International							
1	IATA	Travel volume	1	70.7	0.00	-34.1	262.1
2	IATA	Travel volume \times prevalence proportion	1	87.6	16.8	-42.5	243.6
3	total	Travel volume	1	89.2	18.5	-43.3	237.1
4	FC	Travel volume	1	65.7	24.9	-46.5	230.1
5	FC	Travel volume \times prevalence proportion	1	102.7	32.0	-50.1	229.0
6	total	Travel volume \times prevalence proportion	1	103.8	33.1	-50.6	245.2

Table F8 Model selection for daily travel-related cases reported in NL from Canadian origins considering prevalence proportion with, and without, correction for under-reporting as estimated from seroprevalence data. Explanatory variables are stratified for origin from each non-NL Canadian province (9), or origin from the territories.

	Corrected	Model	K	AICc	Δ AICc	log Lik	Lik Ratio
1	yes	Travel volume \times prevalence proportion	10	638.6	0.0	-308.9	532.0
2	no	Travel volume \times prevalence proportion	10	638.6	0.0	-308.9	532.0
3	yes	Prevalence proportion	10	654.2	15.6	-316.7	516.4
4	no	Prevalence proportion	10	654.2	15.6	-316.7	516.4

References

- Aleman DM, Tham BZ, Wagner SJ, et al (2021) How effective was Newfoundland & Labrador’s travel ban to prevent the spread of COVID-19? An agent-based analysis. medRxiv
- Amendment No. 6 (2020) Government of Newfoundland Labrador, Health and Community Services, URL <https://www.gov.nl.ca/covid-19/files/Special-Measures-Order-Amendment-No.-6-April-23-2020.pdf>, [April 23, 2020]
- Amendment No. 8 (2020) Government of Newfoundland Labrador, Health and Community Services, URL <https://www.gov.nl.ca/covid-19/files/Special-Measures-Order-Amendment-No.-8-April-25-2020.pdf>, [April 25, 2020]
- Amendment No.11 (2020) Government of Newfoundland Labrador, Health and Community Services, URL <https://www.gov.nl.ca/covid-19/files/Special-Measures-Order-Amendment-No.-11-April-29-2020.pdf>, [April 29, 2020]
- Atlantic Travel Amendments (2020) Government of Newfoundland Labrador, Health and Community Services, URL <https://www.gov.nl.ca/covid-19/files/Special-Measures-Order-Atlantic-Travel-Amendments-July-3-2020.pdf>, [July 3, 2020]
- Blood Donation Organizations (2023) The COVID-19 Immunity Task Force, Seroprevalence in Canada by province over time, URL <https://www.covid19immunitytaskforce.ca/seroprevalence-in-canada/>, [Updated on: February 14, 2023]
- Canadian Institute for Health Information (2022) Canadian COVID-19 Intervention Timeline, URL <https://www.cihi.ca/en/canadian-covid-19-intervention-timeline>, [Updated: October 13, 2022]
- Centers for Disease Control and Prevention (2020-2021) Nationwide covid-19 infection- and vaccination-induced antibody seroprevalence (blood donations), URL <https://covid.cdc.gov/covid-data-tracker/#nationwide-blood-donor-seroprevalence>, [Updated on: February 18, 2022]
- Declaration Exemption Order (2020) Government of Newfoundland Labrador, Health and Community Services, URL <https://www.gov.nl.ca/covid-19/files/Declaration-Exemption-Order-May-16-2020.pdf>, [May 16, 2020]

- Dong E, Du H, Gardner L (2020) An interactive web-based dashboard to track COVID-19 in real time. *The Lancet Infectious Diseases* 20(5):533–534
- Exemption Order (2020) Government of Newfoundland Labrador, Health and Community Services, URL <https://www.gov.nl.ca/covid-19/files/Special-Measures-Order-Exemption-Order-March-20-2020.pdf>, [March 20, 2020]
- Exemption Order 2 (2020) Government of Newfoundland Labrador, Health and Community Services, URL <https://www.gov.nl.ca/covid-19/files/Exemption-Order-March-21-2020-new.pdf>, [March 21, 2020]
- Godin A, Xia Y, Buckeridge DL, et al (2021) The role of case importation in explaining differences in early SARS-CoV-2 transmission dynamics in Canada—A mathematical modeling study of surveillance data. *International Journal of Infectious Diseases* 102:254–259
- Government of Canada (2020) New pre-departure COVID-19 testing requirements come into effect for all air travellers flying into Canada, URL <https://www.canada.ca/en/transport-canada/news/2021/01/new-pre-departure-covid-19-testing-requirements-come-into-effect-for-all-air-travellers-flying-into-canada.htm>, [January 6, 2021]
- Government of Newfoundland and Labrador (2020-2021) Department of Tourism, Culture, Arts and Recreation, URL <https://www.gov.nl.ca/tcar/tourism-division/visitor-and-market-insights/>
- Government of Newfoundland Labrador (2016) Tourism, Culture, Arts and Recreation. 2016 EXIT SURVEY PROFILE OF VACATION VISITORS FROM CANADA, URL https://www.gov.nl.ca/tcar/files/5_Vacation_Visitor_Profile_Canadians.pdf
- Government of Newfoundland Labrador (2017) Tourism, Culture, Arts and Recreation, THE SHOULDER SEASON VISITOR, A profile of spring and fall visitors to Newfoundland and Labrador, URL https://www.gov.nl.ca/tcar/files/7_Shoulder_Season_Vacation_Travellers_-_Infographic.pdf
- Government of Newfoundland Labrador (2018a) Department of Tourism, Culture, Arts and Recreation, Newfoundland and Labrador Provincial Tourism Performance 2018, URL www.gov.nl.ca/tcar/files/Annual_Performance_Report_2018_Final_June_-_2019.pdf
- Government of Newfoundland Labrador (2018b) Tourism, Culture, Arts and Recreation. 2016 EXIT SURVEY – Result Highlights, URL https://www.gov.nl.ca/tcar/files/2016_Exit_Survey_Highlights_Report_FINAL_REVISSED_June_2018.pdf, [Updated June 2018]
- Government of Newfoundland Labrador (2023) Health and Community Services, URL <https://www.gov.nl.ca/releases/category/health/>, [Updated on: April 11, 2023]
- Hart WS, Maini PK, Thompson RN (2021) High infectiousness immediately before COVID-19 symptom onset highlights the importance of continued contact tracing. *elife* 10:e65534
- Hellewell J, Russell TW, Beale R, et al (2021) Estimating the effectiveness of routine asymptomatic PCR testing at different frequencies for the detection of SARS-CoV-2 infections. *BMC medicine* 19(1):1–10
- Hendy S, Steyn N, James A, et al (2021) Mathematical modelling to inform New Zealand’s COVID-19 response. *Journal of the Royal Society of New Zealand* 51(sup1):S86–S106
- Hewitt CM, Haan M, Neis B (2018) Interprovincial employees from Newfoundland and Labrador, 2005-2014. Memorial University of Newfoundland
- International Air Transport Association (2020) Economic performance of the airline industry, URL <https://www.iata.org>

- Labrador-Quebec Border Amendments (2020) Government of Newfoundland Labrador, Health and Community Services, Special Measures Order, URL <https://www.gov.nl.ca/covid-19/files/Special-Measures-Order-Labrador-Quebec-Border-Amendments-June-26-2020.pdf>, [June 25, 2020]
- Lauer SA, Grantz KH, Bi Q, et al (2020) The incubation period of coronavirus disease 2019 (COVID-19) from publicly reported confirmed cases: estimation and application. *Annals of internal medicine* 172(9):577–582
- Lou B, Li TD, Zheng SF, et al (2020) Serology characteristics of SARS-CoV-2 infection after exposure and post-symptom onset. *European Respiratory Journal* 56(2)
- Martignoni MM, Rahman P, Hurford A (2022) Rotational worker vaccination provides indirect protection to vulnerable groups in regions with low COVID-19 prevalence. *AIMS Mathematics* 7:3988–4003. URL [doi:10.3934/math.2022220](https://doi.org/10.3934/math.2022220)
- Martignoni MM, Mohammadi Z, Loredano-Osti J, et al (2023) Extensive SARS-CoV-2 testing reveals BA.1/BA.2 asymptomatic rates and underreporting in school children. *Can Commun Dis Rep* 49:155–65. URL <https://doi.org/10.14745/ccdr.v49i04a08>
- Public Health Infobase (2020-2021) Public Health Agency of Canada, Coronavirus disease (COVID-19), URL <https://open.canada.ca/data/en/dataset/261c32ab-4cfd-4f81-9dea-7b64065690dc>, [Released January 2020]
- Re-Opening - Travel (2021) Government of Newfoundland Labrador, Health and Community Services, URL <https://www.gov.nl.ca/covid-19/files/Special-Measures-Order-Re-opening-Travel-July-1-2021.pdf>, [July 1, 2021]
- Self-Isolation Exemption Order (2020) Government of Newfoundland Labrador, Health and Community Services, URL <https://www.gov.nl.ca/covid-19/files/Self-Isolation-Exemption-Order-May-16-2020.pdf>, [May 16, 2020]
- Smith LE, Amlôt R, Lambert H, et al (2020) Factors associated with adherence to self-isolation and lockdown measures in the UK: a cross-sectional survey. *Public Health* 187:41–52
- Statistics Canada (2020-2021) Frontier counts, URL <https://www23.statcan.gc.ca/imdb/p2SV.pl?Function=getSurvey&SDDS=5005>, [Updated on: March 13, 2023]
- Statistics Canada (2021) Census Profile, 2021 Census of Population, URL <https://www12.statcan.gc.ca/census-recensement/2021/dp-pd/prof/index.cfm?Lang=E>, [Updated on: March 29, 2023]
- The United States government (2021) United States Census Bureau, U.S. and World Population Clock, URL <https://www.census.gov/popclock/>, [Reported: December 31, 2021]
- Travel Exemption Order (2020) Government of Newfoundland Labrador, Health and Community Services, URL <https://www.gov.nl.ca/covid-19/files/Travel-Exemption-Order.pdf>, [May 5, 2020]
- Traveler COVID-19 Testing (2021) Government of Newfoundland Labrador, Health and Community Services, Special Measures Order, URL <https://www.gov.nl.ca/covid-19/files/Special-Measures-Order-Traveller-COVID-19-Testing-May-15-2021.pdf>, [May 15, 2021]
- Trudeau J (2020) Prime Minister announces new actions under Canada’s COVID-19 response, URL <https://pm.gc.ca/en/news/news-releases/2020/03/16/prime-minister-announces-new-actions-under-canadas-covid-19-response>, [March 16, 2020]