

A

II.1 patient

II.4 patient

II.5 patient

B

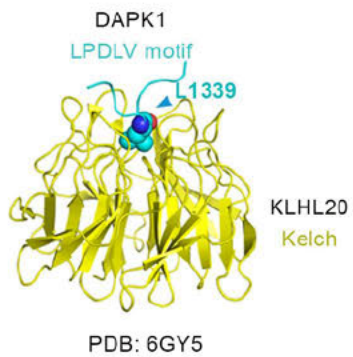
II.4 patient

II.5 patient

**C**

Exome sequencing filtering II.1 patient

All variants (AF<0.1%)	6,376
All Homozygous variants	228
Homozygous variants in IBD blocks	17
Exclude variants seen in in-house database (307 exomes)	15
Exclude homopolymers (false positive) & intronic variants (PhyloP<0.2)	7
Exclude variants seen in population (ExAC & UK10, AF>0.0001)	3
Exclude 'benign' exonic variants (Polyphen<0.8, SIFT>0.05, M-CAP<0.020)	1

D**E**

GAN-null patient



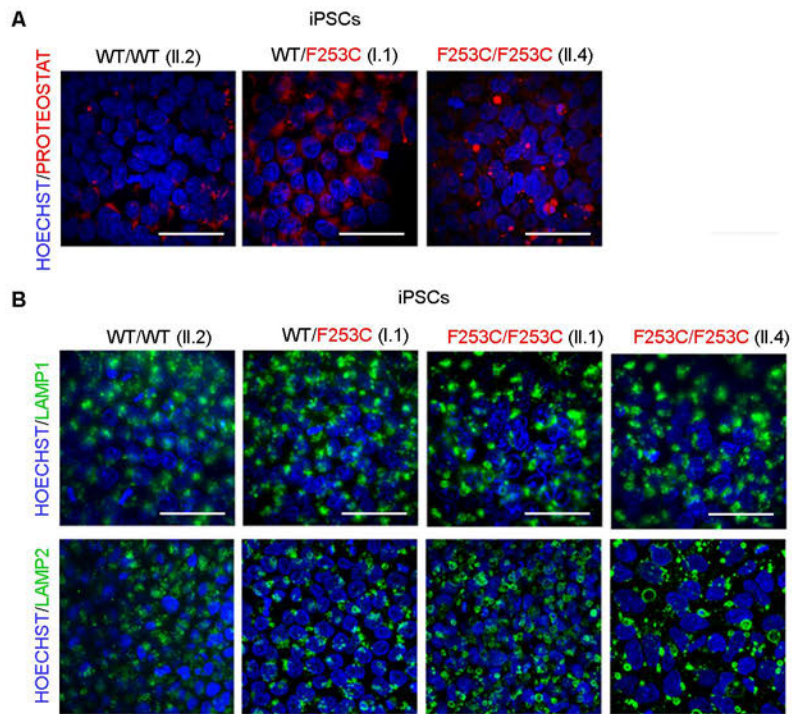


Figure S2
C. Bonnard *et al.*, (2024)

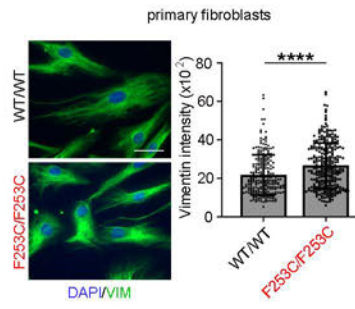


Figure S3
C. Bonnard *et al.*, (2024)

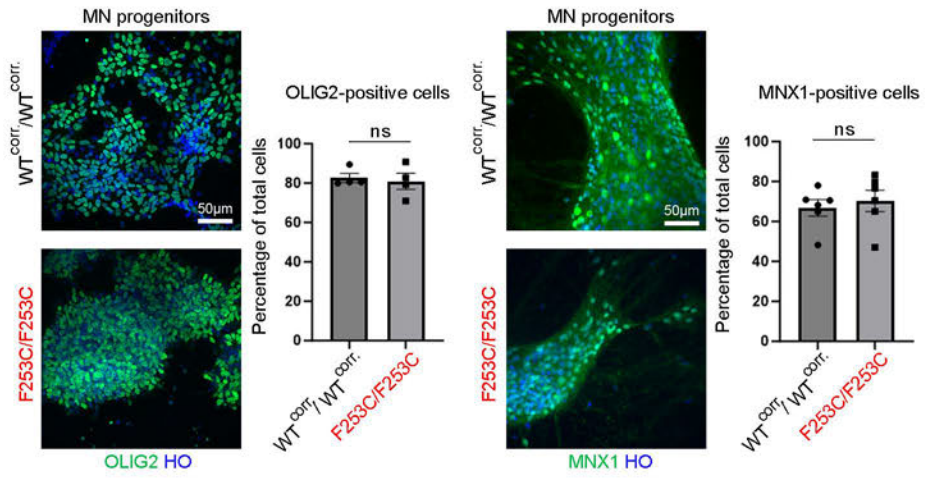


Figure S4
C. Bonnard *et al.*, (2024)

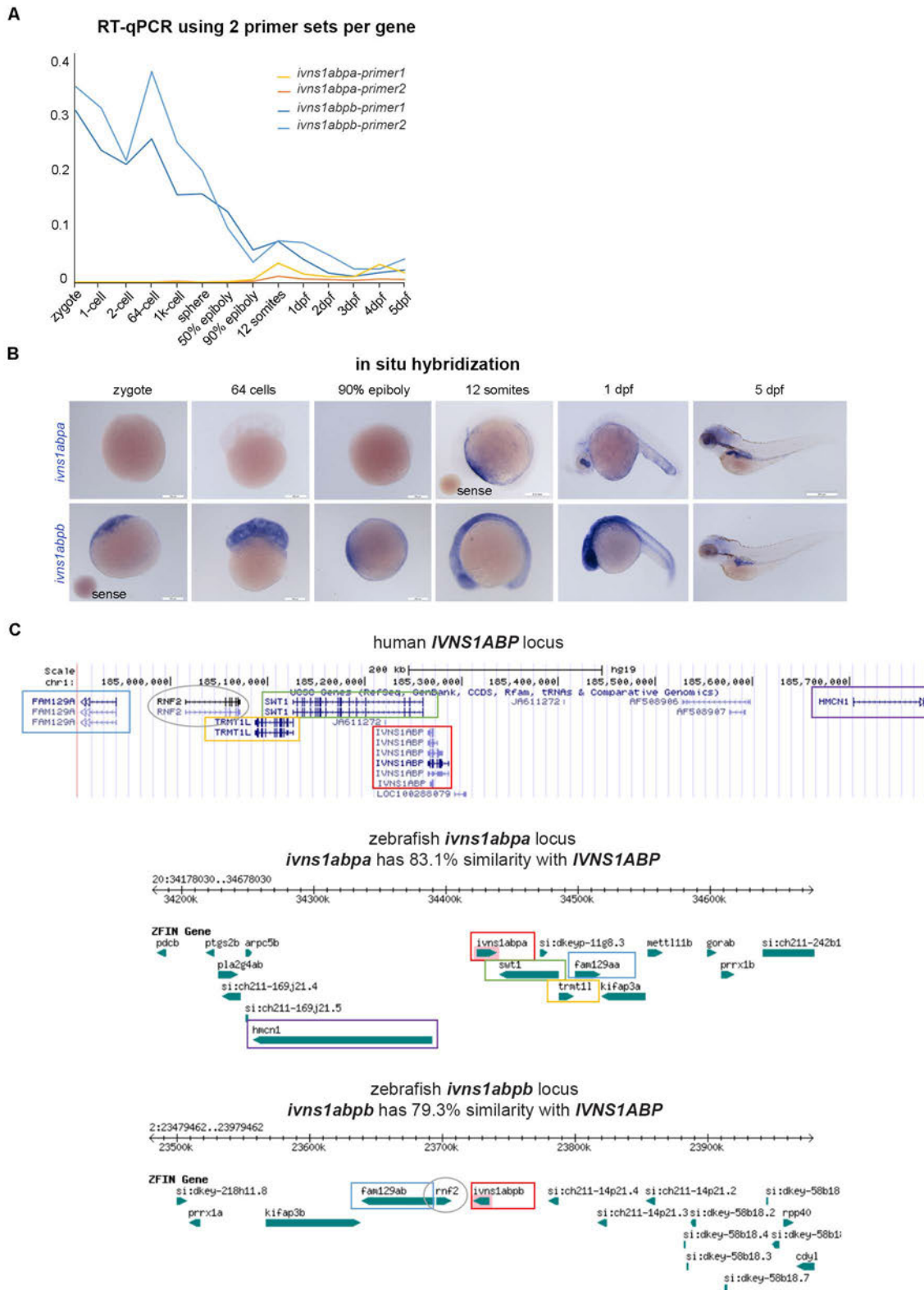


Figure S5
 C.Bonnard *et al.*, (2024)

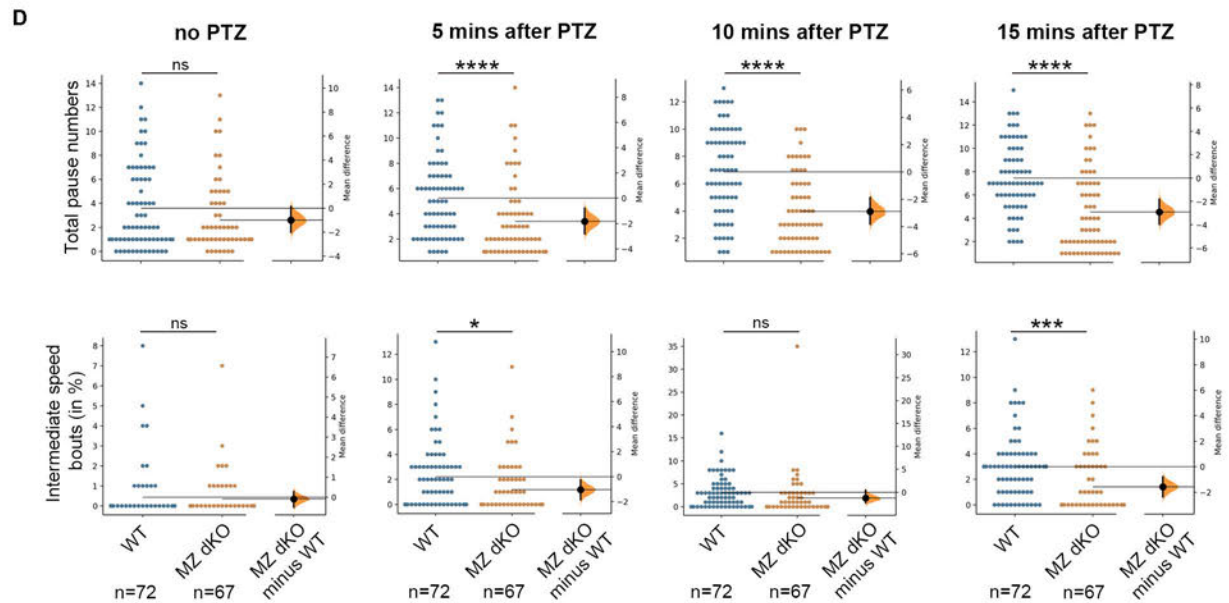
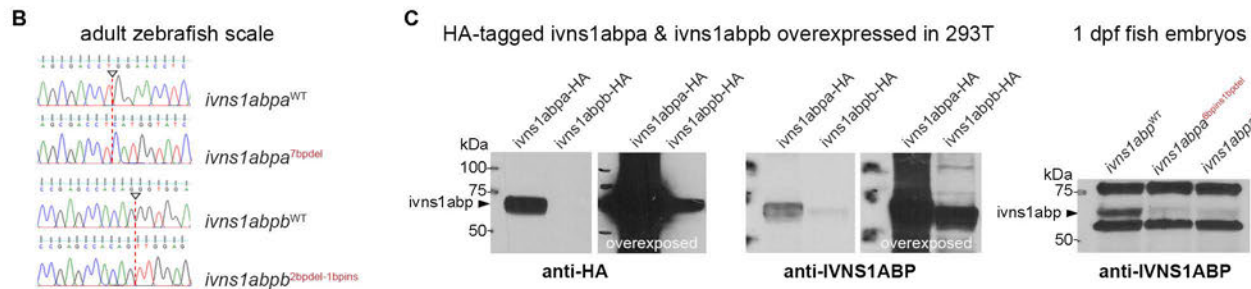
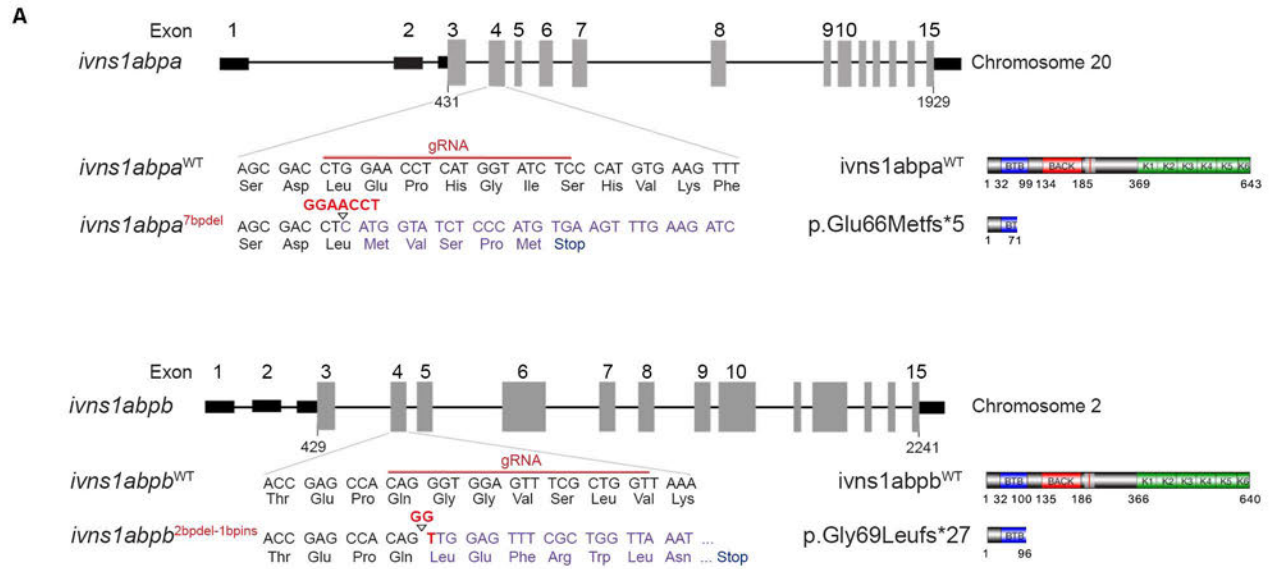


Figure S6
C. Bonnard et al., (2024)

Top list of ubiquitinated proteins with significant fold change (logFC) in two homozygous (HMZ) patients (II.1 & II.4) versus two controls wildtype (WT II.2) and heterozygous (HTZ I.1)									
	Protein name	Gene	II.2 (WT)	I.1 (HTZ)	II.1 (HMZ)	II.4 (HMZ)	p value	WTav	MTav
1	Alpha-enolase	<i>ENO1</i>	253,738,039	233,746,418	167,852,203	189,183,389	0.0471	243,742,229	178,517,796
2	Glucosidase 2 subunit beta	<i>PRKCSH</i>	36,156,970	37,294,114	44,963,055	44,837,468	0.0419	36,725,542	44,900,261
3	60S ribosomal protein L5	<i>RPL5</i>	22,565,294	22,109,299	27,170,165	26,581,446	0.0083	22,337,297	26,875,806
4	Heterogeneous nuclear ribonucleoprotein H2	<i>HNRNPH2</i>	3,177,915	3,474,061	2,172,992	1,779,883	0.0371	3,325,988	1,976,437
5	Serine/arginine-rich splicing factor 6	<i>SRSF6</i>	4,675,644	4,815,498	5,136,883	5,295,910	0.0485	4,745,571	5,216,396
6	Isoform 8 of Protein transport protein Sec31A	<i>SEC31A</i>	5,005,881	5,101,888	6,811,001	6,819,738	0.0165	5,053,884	6,815,369
7	40S ribosomal protein S23	<i>RPS23</i>	7,030,710	6,489,940	9,079,727	8,411,920	0.0474	6,760,325	8,745,824
8	UMP-CMP kinase	<i>CMPK1</i>	5,188,959	5,498,722	3,706,928	3,489,043	0.0161	5,343,840	3,597,986
9	Methylmalonate-semialdehyde dehydrogenase [acylating], mitochondrial	<i>ALDH6A1</i>	1,009,509	1,225,089	5,224,426	4,687,541	0.0232	1,117,299	4,955,983
10	Regulation of nuclear pre-mRNA domain-containing protein 1B	<i>RPRD1B</i>	5,486,370	4,848,454	2,924,887	2,454,401	0.0301	5,167,412	2,689,644
11	Proteasome activator complex subunit 2	<i>PSME2</i>	6,574,865	6,759,166	7,628,436	7,827,150	0.0162	6,667,016	7,727,793
12	Exportin-7	<i>XPO7</i>	1,885,534	1,571,306	3,003,602	2,657,977	0.0428	1,728,420	2,830,789
13	Double-stranded RNA-binding protein Staufen homolog 2	<i>STAU2</i>	826,243	807,304	920,381	953,286	0.0406	816,773	936,834
14	Isoform 2 of AP-1 complex subunit gamma-1	<i>APIG1</i>	2,177,996	2,713,351	3,953,431	4,384,684	0.0411	2,445,673	4,169,057
15	Thioredoxin reductase 1, cytoplasmic	<i>TXNRD1</i>	6,360,014	6,949,799	10,597,122	10,462,265	0.0389	6,654,906	10,529,693
16	Nuclear pore glycoprotein p62	<i>NUP62</i>	194,035	312,774	985,746	897,002	0.0145	253,405	941,374
17	Uridine 5'-monophosphate synthase	<i>UMPS</i>	2,643,323	3,254,054	5,794,254	4,984,072	0.0468	2,948,688	5,389,163
18	Prolyl endopeptidase	<i>PREP</i>	1,424,477	1,582,483	655,172	874,623	0.0392	1,503,480	764,898
19	Isoform 2 of Cystathionine beta-synthase	<i>CBS</i>	1,239,382	762,118	2,664,919	3,176,507	0.0320	1,000,750	2,920,713
20	Calcium-binding protein 39	<i>CAB39</i>	1,181,102	1,273,196	599,742	464,311	0.0196	1,227,149	532,026
21	Mini-chromosome maintenance complex-binding protein	<i>MCMBP</i>	173,211	291,392	751,242	860,679	0.0194	232,302	805,961
22	Costars family protein ABRACL	<i>ABRACL</i>	411,472	439,530	264,889	248,893	0.0188	425,501	256,891
23	Nuclear receptor-binding protein	<i>NRBP1</i>	244,697	209,813	64,231	101,227	0.0298	227,255	82,729
24	Mitochondrial carrier homolog 2	<i>MTCH2</i>	503,657	361,894	1,356,402	1,621,239	0.0381	432,776	1,488,821
25	Ras-related GTP-binding protein D	<i>RRAGD</i>	395,518	362,456	257,101	282,532	0.0395	378,987	269,816
26	Isoform 2 of Peptidyl-prolyl cis-trans isomerase FKBP8	<i>FKBP8</i>	222,266	207,138	265,756	284,656	0.0415	214,702	275,206
27	RNA polymerase II elongation factor ELL3	<i>ELL3</i>	738,435	750,141	475,555	441,068	0.0230	744,288	458,312

Top list of ubiquitinated peptides with significant fold change (logFC) in two homozygous (HMZ) patients (II.1 & II.4) versus two controls wildtype (WT II.2) and heterozygous (HTZ I.1)										
	Uniprot id	protein name	Gene	II.2 (WT)	I.1 (HTZ)	II.1 (HMZ)	II.4 (HMZ)	p value	WTav	MTav
1	Q15004 [24-41] 1D[N11]1GG[K1]	PCNA-associated factor	<i>PCLAF</i>	92,345	81,620	350,598	361,567	0.0008	86,982	356,082
2	O43175 [381-394] 1D[N12]1GG[K4]	D-3-phosphoglycerate dehydrogenase	<i>PHGDH</i>	66,489	57,045	178,801	167,317	0.0051	61,767	173,059
3	Q9ULK5 [372-382] 1GG[K8]	Vang-like protein 2	<i>VANGL2</i>	13,944	41,303	838,698	777,508	0.0092	27,624	808,103
4	P13667 [235-246] 1GG[K11]	Protein disulfide-isomerase A4	<i>PDIA4</i>	14,480	19,205	46,496	42,471	0.0134	16,843	44,484
5	P20700 [529-542] 1GG[K4]	Lamin-B1	<i>LMNB1</i>	20,378	26,238	54,291	49,773	0.0193	23,308	52,032
6	P68104 [393-408] 1GG[K3]	Elongation factor 1-alpha 1	<i>EEF1A1</i>	39,961	31,584	69,954	76,259	0.0232	35,772	73,107
7	Q8NOX7 [460-475] 1GG[K6]	Spartin	<i>SPART</i>	48,172	66,184	135,506	121,283	0.0283	57,178	128,394
8	P68036-3 [181-191] 1GG[K9]	Isoform 3 of Ubiquitin-conjugating enzyme E2 L3	<i>UBE2L3</i>	145,488	119,269	262,646	299,609	0.0289	132,379	281,128
9	P62913 [170-178] 1GG[K9]	60S ribosomal protein L11	<i>RPL11</i>	63,366	57,250	102,097	103,962	0.0309	60,308	103,030
10	Q13286 [256-272] 1GG[K7]	Battenin	<i>CLN3</i>	110,190	119,520	428,711	390,306	0.0319	114,855	409,508
11	P61088 [71-82] 1GG[K4]	Ubiquitin-conjugating enzyme E2 N	<i>UBE2N</i>	310,585	292,777	381,802	372,069	0.0341	301,681	376,935
12	P68036-3 [130-140] 1GG[K2]	Isoform 3 of Ubiquitin-conjugating enzyme E2 L3	<i>UBE2L3</i>	367,511	511,829	899,490	1,001,458	0.0363	439,670	950,474
13	P45973 [144-159] 1GG[K]	Chromobox protein homolog 5	<i>CBX5</i>	181,323	194,661	133,568	127,051	0.0371	187,992	130,310
14	P11142 [518-526]; PODMV8 [518-526] 1O[M1]1GG[K7]	Heat shock cognate 71 kDa protein	<i>HSPA8</i>	77,995	83,296	244,315	219,601	0.0431	80,646	231,958
15	Q7Z569 [377-400] 2C[C15C20]2GG[K5K9]	BRCA1-associated protein	<i>BRAP</i>	61,446	45,855	120,330	145,057	0.0465	53,650	132,694
16	P62714 [37-49]; P67775 [37-49] 1GG[K5]	Serine/threonine-protein phosphatase 2A catalytic subunit beta isoform	<i>PPP2CB</i>	99,913	97,869	198,207	183,564	0.0466	98,891	190,885
17	P11142 [518-526]; PODMV8 [518-526] 1GG[K7]	Heat shock cognate 71 kDa protein	<i>HSPA8</i>	430,899	407,282	780,296	862,300	0.0483	419,090	821,298

Top list of ubiquitinated peptide targets matched against fold change (protein_fc) and p-value (protein.Pvalue) in corresponding protein.										
	Uniprot id	protein name	Gene	II.2 (WT)	I.1 (HTZ)	II.1 (HMZ)	II.4 (HMZ)	pvalue	WTav	MTav
1	Q99426 [197-211] 1D[N13]1GG[K7]	Tubulin-folding cofactor B	<i>TBCB</i>	0.0014	0.0013	0.0020	0.0020	0.0064	0.0014	0.0020
2	P63104 [139-157] 1GG[K1]	14-3-3 protein zeta/delta	<i>YWHAZ</i>	0.0002	0.0002	0.0004	0.0004	0.0143	0.0002	0.0004
3	P15121 [257-269] 1GG[K7]	Aldose reductase	<i>AKR1B1</i>	0.0021	0.0023	0.0031	0.0032	0.0239	0.0022	0.0032
4	P62258 [62-73] 1GG[K8]	14-3-3 protein epsilon	<i>YWHAE</i>	0.0004	0.0003	0.0006	0.0007	0.0275	0.0003	0.0006
5	Q15233 [97-107] 1GG[K3]	Non-POU domain-containing octamer-binding protein	<i>NONO</i>	0.0004	0.0003	0.0007	0.0006	0.0281	0.0004	0.0007
6	Q96FW1 [84-94] 1C[C8]1GG[K1]	Ubiquitin thioesterase OTUB1	<i>OTUB1</i>	0.0018	0.0026	0.0053	0.0059	0.0321	0.0022	0.0056
7	P84103 [78-86] 1D[N5]1GG[K8]	Serine/arginine-rich splicing factor 3	<i>SRSF3</i>	0.0047	0.0036	0.0086	0.0080	0.0389	0.0041	0.0083
8	P68036-3 [130-140] 1GG[K2]	Isoform 3 of Ubiquitin-conjugating enzyme E2 L3	<i>UBE2L3</i>	0.0255	0.0387	0.0798	0.0967	0.0390	0.0321	0.0882
9	Q06830 [169-190] 1C[C5]1GG[K10]	Peroxisredoxin-1	<i>PRDX1</i>	0.0003	0.0004	0.0006	0.0007	0.0394	0.0003	0.0007
10	P08670 [441-450] 1GG[K5]	Vimentin	<i>VIM</i>	0.0000	0.0001	0.0001	0.0001	0.0481	0.0001	9.5469

Top 20 pathways enrichment analysis with the ubipeptide results									
ID	Description	setSize	enrichmentScore	NES	p value	p.adjust	q values	rank	leading_edge
R-HSA-168256	Immune System	81	0.394677963	1.9579749	0.0010152	0.0044235	0.0024932	298	tags=77%, list=49%, signal=45%
R-HSA-1266738	Developmental Biology	52	0.456079873	2.0903467	0.0010331	0.0044235	0.0024932	149	tags=52%, list=25%, signal=43%
R-HSA-8953854	Metabolism of RNA	55	0.43914376	2.0330473	0.0010341	0.0044235	0.0024932	106	tags=42%, list=17%, signal=38%
R-HSA-168249	Innate Immune System	53	0.422965382	1.9371094	0.0010363	0.0044235	0.0024932	298	tags=81%, list=49%, signal=45%
R-HSA-422475	Axon guidance	45	0.526296791	2.3517864	0.0010428	0.0044235	0.0024932	149	tags=60%, list=25%, signal=49%
R-HSA-5663205	Infectious disease	40	0.470011733	2.0467143	0.0010571	0.0044235	0.0024932	83	tags=40%, list=14%, signal=37%
R-HSA-5653656	Vesicle-mediated transport	33	0.426037513	1.7922912	0.001065	0.0044235	0.0024932	253	tags=73%, list=42%, signal=45%
R-HSA-199991	Membrane Trafficking	30	0.458408656	1.8765067	0.0010834	0.0044235	0.0024932	253	tags=77%, list=42%, signal=47%
R-HSA-194315	Signaling by Rho GTPases	30	0.4817795	1.9721694	0.0010834	0.0044235	0.0024932	145	tags=57%, list=24%, signal=45%
R-HSA-195258	RHO GTPase Effectors	29	0.494899788	2.0140785	0.0010846	0.0044235	0.0024932	145	tags=59%, list=24%, signal=47%
R-HSA-71291	Metabolism of amino acids and derivatives	28	0.515457693	2.0790955	0.0010893	0.0044235	0.0024932	99	tags=50%, list=16%, signal=44%
R-HSA-376176	Signaling by ROBO receptors	28	0.538835138	2.1733883	0.0010893	0.0044235	0.0024932	142	tags=61%, list=23%, signal=49%
R-HSA-72766	Translation	26	0.504990508	2.0053614	0.0010965	0.0044235	0.0024932	103	tags=50%, list=17%, signal=43%
R-HSA-168254	Influenza Infection	24	0.581865839	2.2590866	0.0011123	0.0044235	0.0024932	99	tags=54%, list=16%, signal=47%
R-HSA-168255	Influenza Life Cycle	24	0.581865839	2.2590866	0.0011123	0.0044235	0.0024932	99	tags=54%, list=16%, signal=47%
R-HSA-9010553	Regulation of expression of SLITs and ROBOs	24	0.56164222	2.1805686	0.0011123	0.0044235	0.0024932	99	tags=54%, list=16%, signal=47%
R-HSA-1799339	SRP-dependent cotranslational protein targeting to membrane	22	0.593006086	2.246981	0.0011236	0.0044235	0.0024932	103	tags=59%, list=17%, signal=51%
R-HSA-927802	Nonsense-Mediated Decay (NMD)	22	0.606081531	2.2965257	0.0011236	0.0044235	0.0024932	99	tags=59%, list=16%, signal=51%
R-HSA-975957	Nonsense Mediated Decay (NMD) enhanced by the Exon Junct	22	0.606081531	2.2965257	0.0011236	0.0044235	0.0024932	99	tags=59%, list=16%, signal=51%
R-HSA-6791226	Major pathway of rRNA processing in the nucleolus and cytosol	21	0.583865908	2.1791561	0.0011338	0.0044235	0.0024932	99	tags=57%, list=16%, signal=50%

Table S1

C. Bonnard *et al.*, (2024)